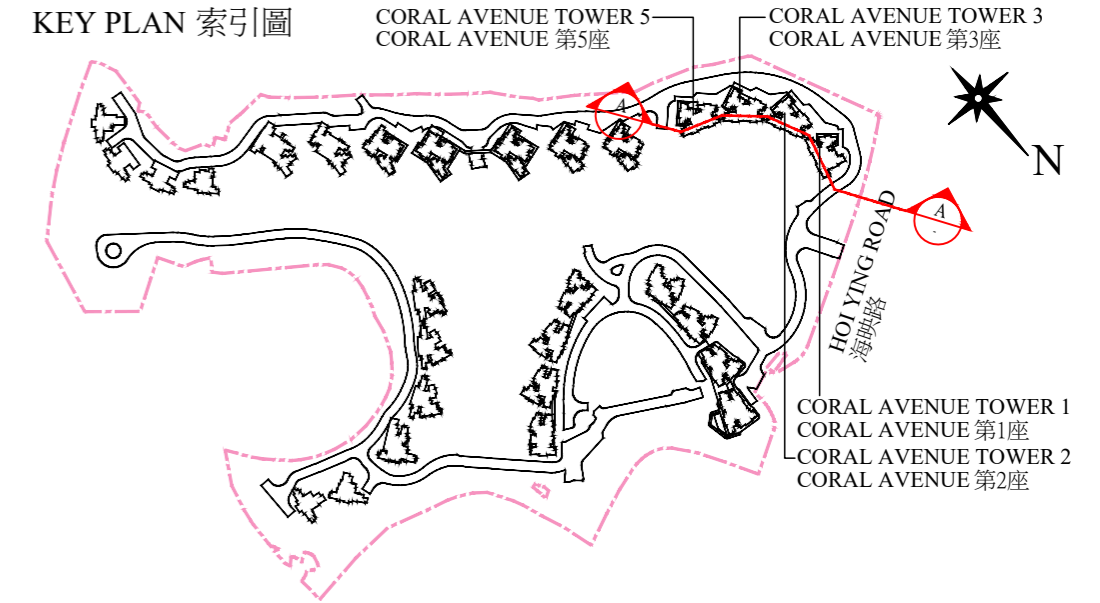


# CROSS-SECTION PLAN OF BUILDING IN THE PHASE 期數中的建築物的橫截面圖

## CROSS-SECTION PLAN A-A 橫截面圖 A-A



CORAL AVENUE TOWER 5  
CORAL AVENUE 第5座

CORAL AVENUE TOWER 3  
CORAL AVENUE 第3座

CORAL AVENUE TOWER 2  
CORAL AVENUE 第2座

CORAL AVENUE TOWER 1  
CORAL AVENUE 第1座

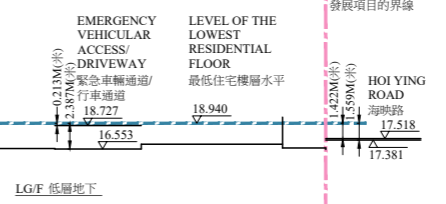
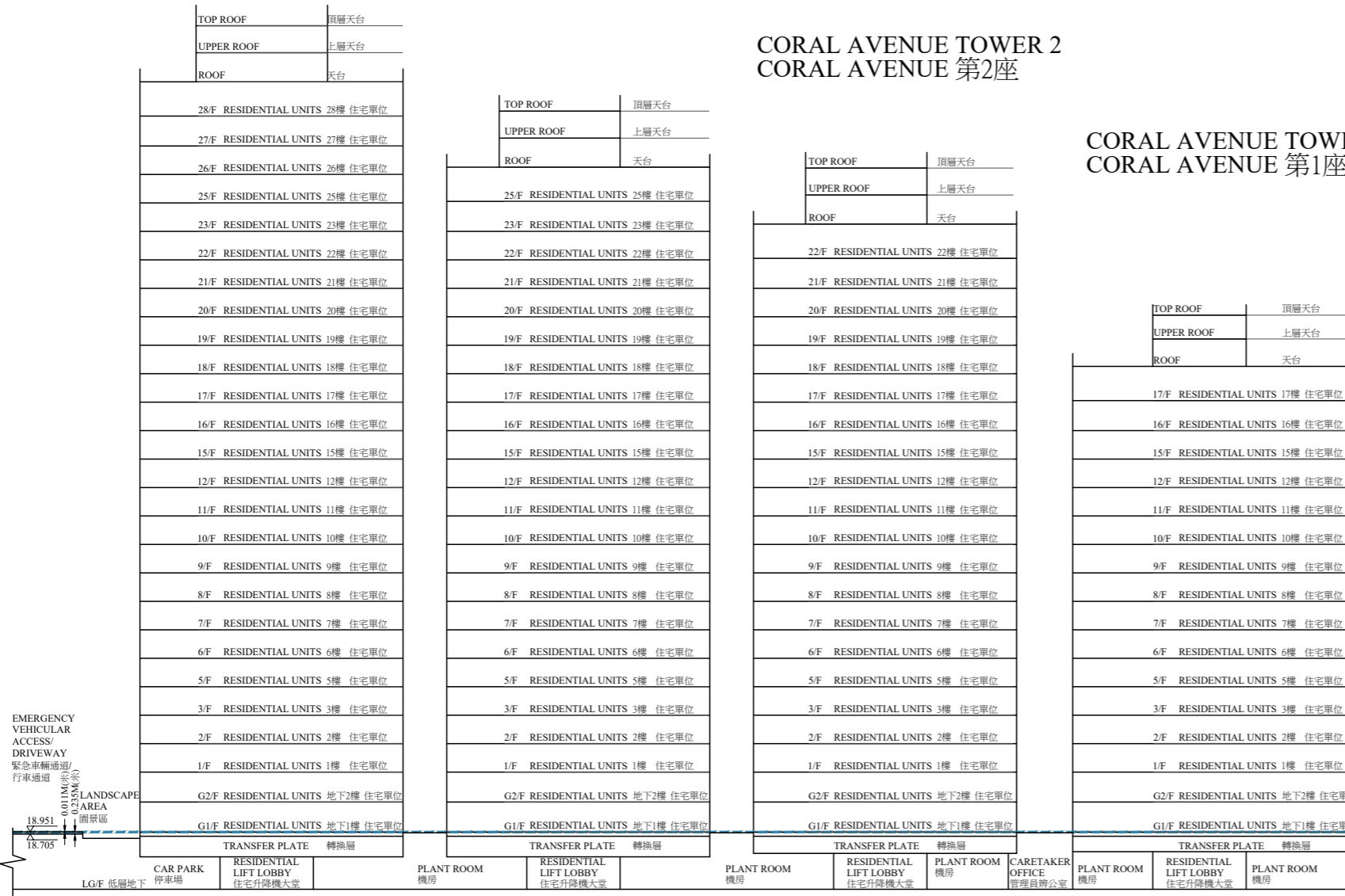
Boundary of the Development  
發展項目的界線

Notes:

1. Denotes height (in metres) above the Hong Kong Principal Datum.
2. Dotted line denotes the level of the lowest residential floor of the building.
3. The part of Hoi Ying Road adjacent to the building is 17.381 metres to 17.518 metres above the Hong Kong Principal Datum.
4. The parts of Emergency Vehicular Access/ Driveway adjacent to the building is 16.553 metres to 18.727 metres above the Hong Kong Principal Datum.
5. The parts of Emergency Vehicular Access/ Driveway adjacent to the building is 18.705 metres to 18.951 metres above the Hong Kong Principal Datum.

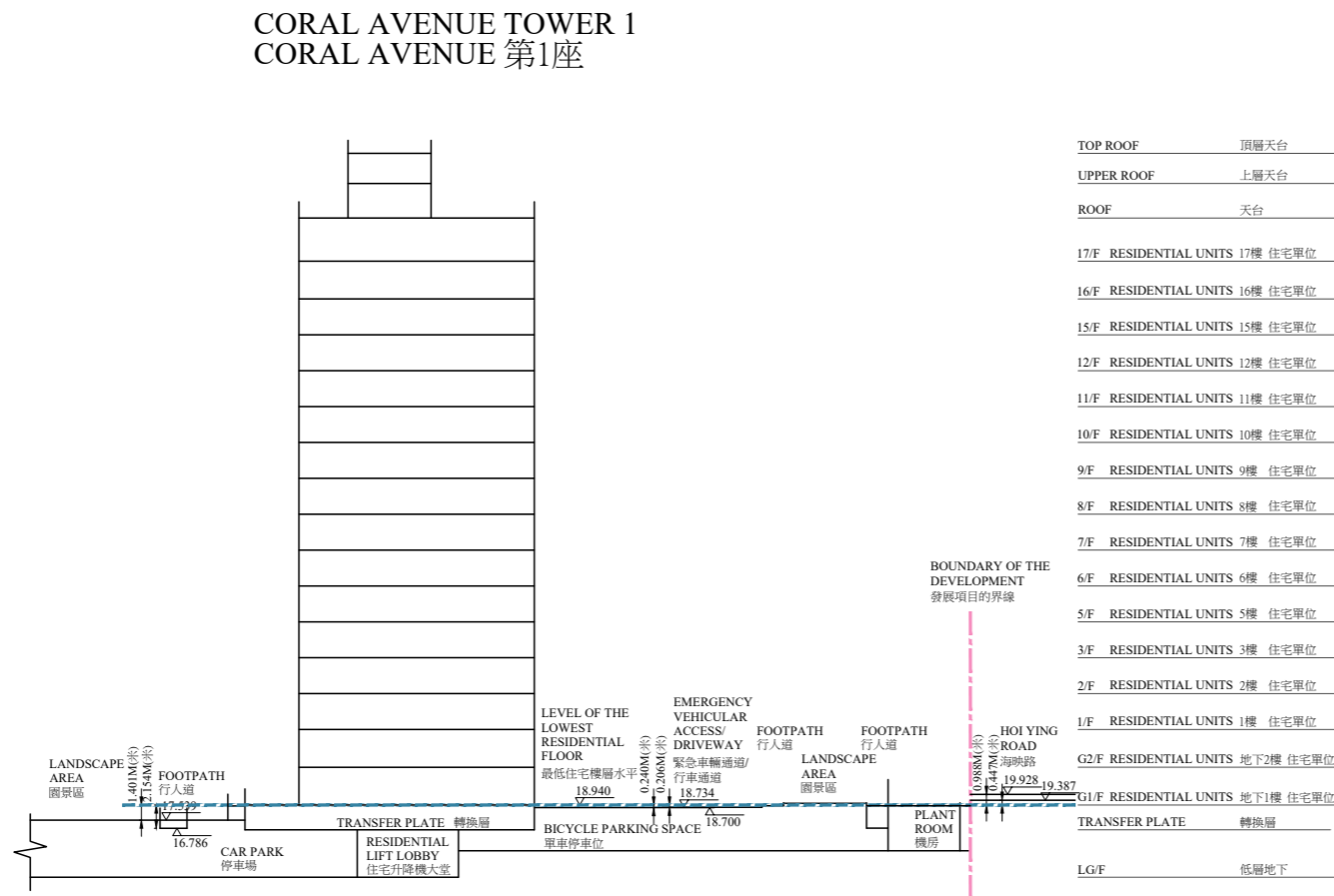
備註:

1. 代表香港主水平基準以上的高度(米)。
2. 虛線為建築物最低住宅樓層水平。
3. 毗鄰建築物的一段海映路為香港主水平基準以上17.381米至17.518米。
4. 毗鄰建築物的緊急車輛通道/行車通道為香港主水平基準以上16.553米至18.727米。
5. 毗鄰建築物的緊急車輛通道/行車通道為香港主水平基準以上18.705米至18.951米。

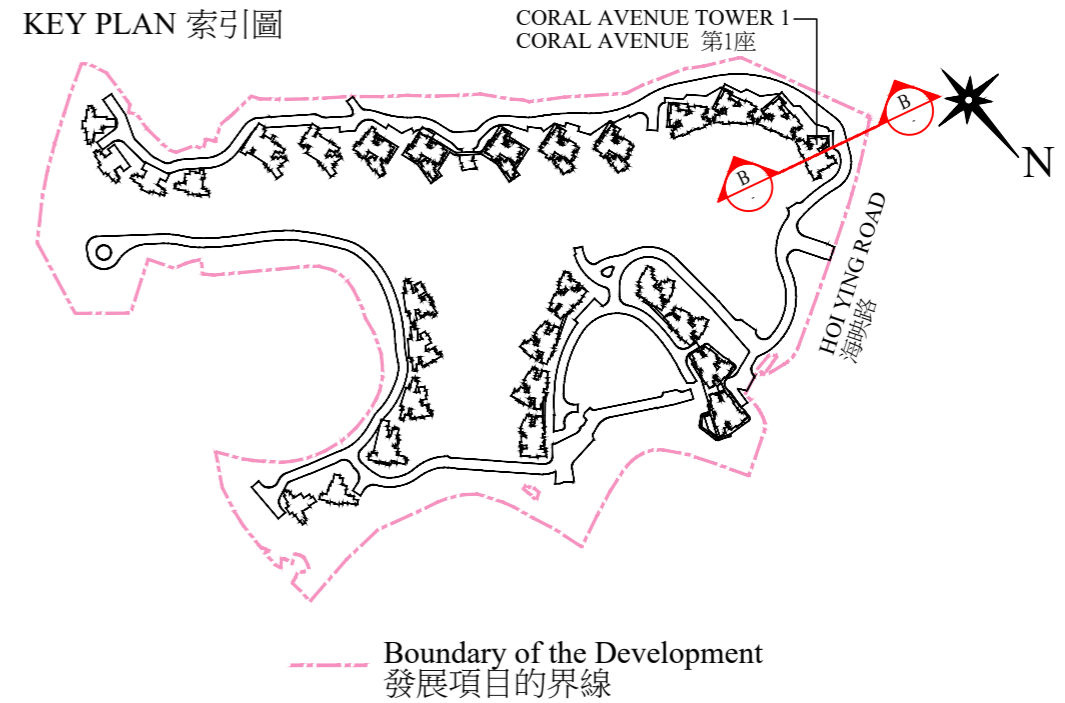


# CROSS-SECTION PLAN OF BUILDING IN THE PHASE 期數中的建築物的橫截面圖

## CROSS-SECTION PLAN B-B 橫截面圖 B-B



### KEY PLAN 索引圖



#### Notes:

1.  $\nabla$  — Denotes height (in metres) above the Hong Kong Principal Datum.
2. - - - Dotted line denotes the level of the lowest residential floor of the building.
3. The parts of Emergency Vehicular Access/ Driveway adjacent to the building is 18.700 metres to 18.734 metres above the Hong Kong Principal Datum.
4. The part of Hoi Ying Road adjacent to the building is 19.387 metres to 19.928 metres above the Hong Kong Principal Datum.
5. The parts of Footpath adjacent to the building is 16.786 metres to 17.539 metres above the Hong Kong Principal Datum.

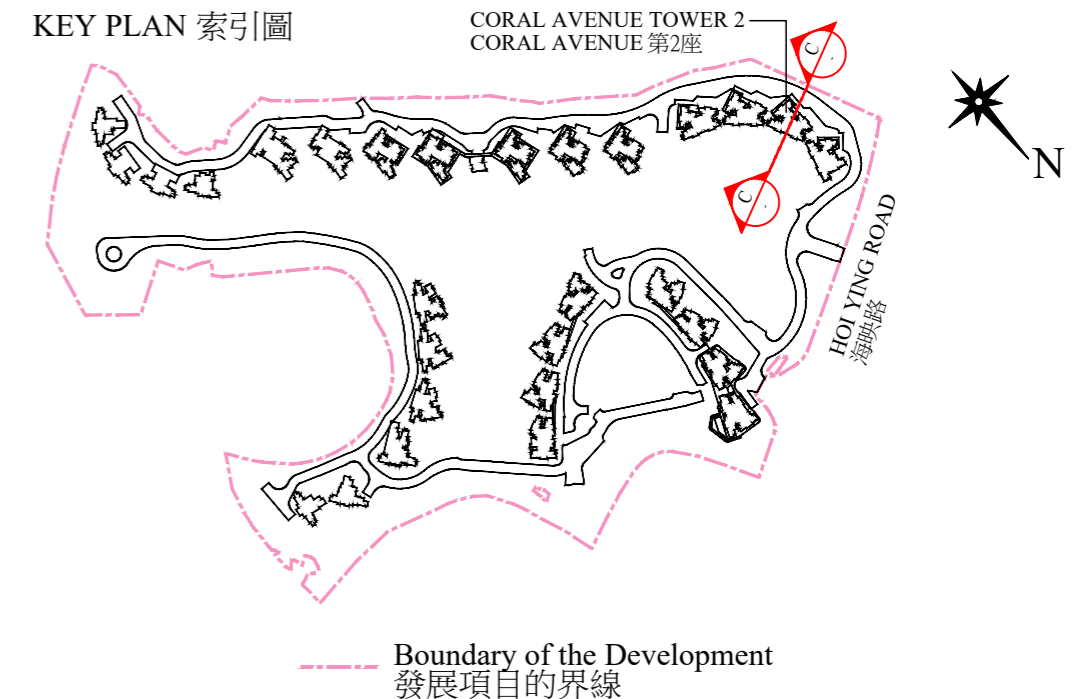
#### 備註:

1.  $\nabla$  — 代表香港主水平基準以上的高度(米)。
2. - - - 虛線為建築物最低住宅樓層水平。
3. 毗鄰建築物的緊急車輛通道/行車通道為香港主水平基準以上18.700米至18.734米。
4. 毗鄰建築物的一段海映路為香港主水平基準以上19.387米至19.928米。
5. 毗鄰建築物的一段行人道為香港主水平基準以上16.786米至17.539米。

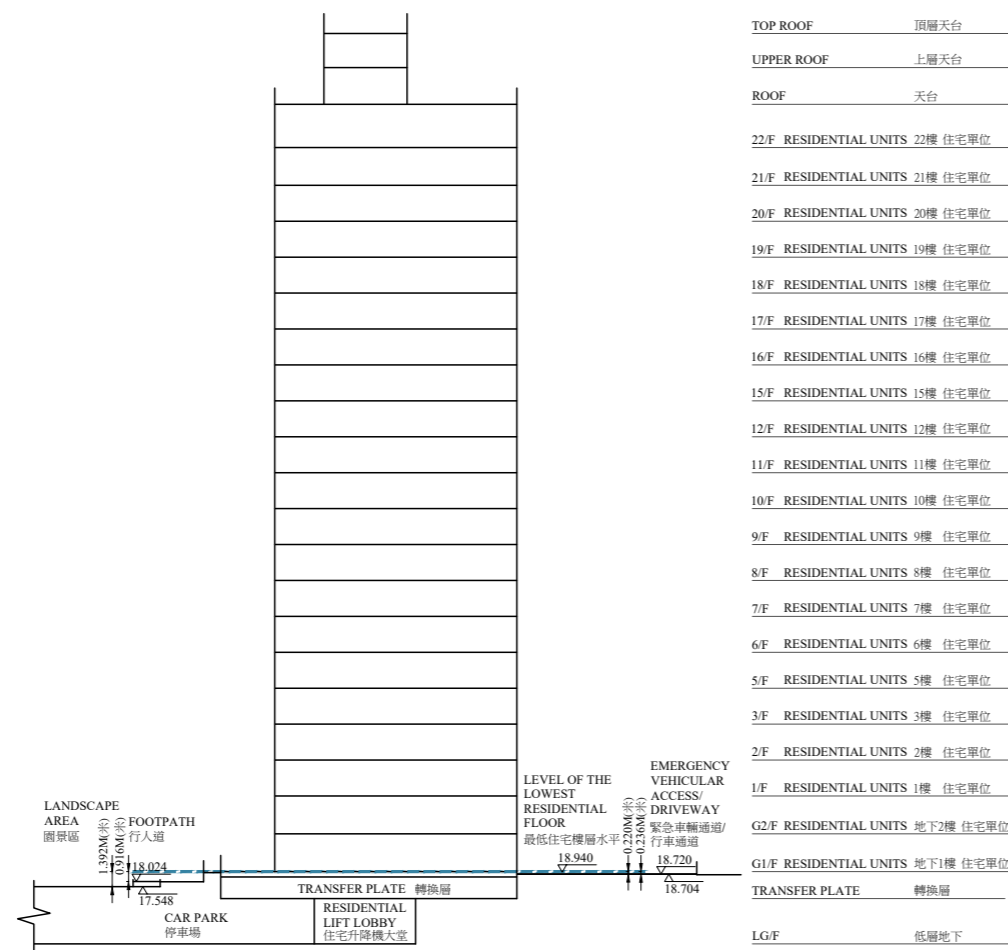
# CROSS-SECTION PLAN OF BUILDING IN THE PHASE 期數中的建築物的橫截面圖

## CROSS-SECTION PLAN C-C 橫截面圖 C-C

KEY PLAN 索引圖



CORAL AVENUE TOWER 2  
CORAL AVENUE 第2座



Notes:

1. Denotes height (in metres) above the Hong Kong Principal Datum.
2. Dotted line denotes the level of the lowest residential floor of the building.
3. The parts of Emergency Vehicular Access/ Driveway adjacent to the building is 18.704 metres to 18.720 metres above the Hong Kong Principal Datum.
4. The parts of Footpath adjacent to the building is 17.548 metres to 18.024 metres above the Hong Kong Principal Datum.

備註:

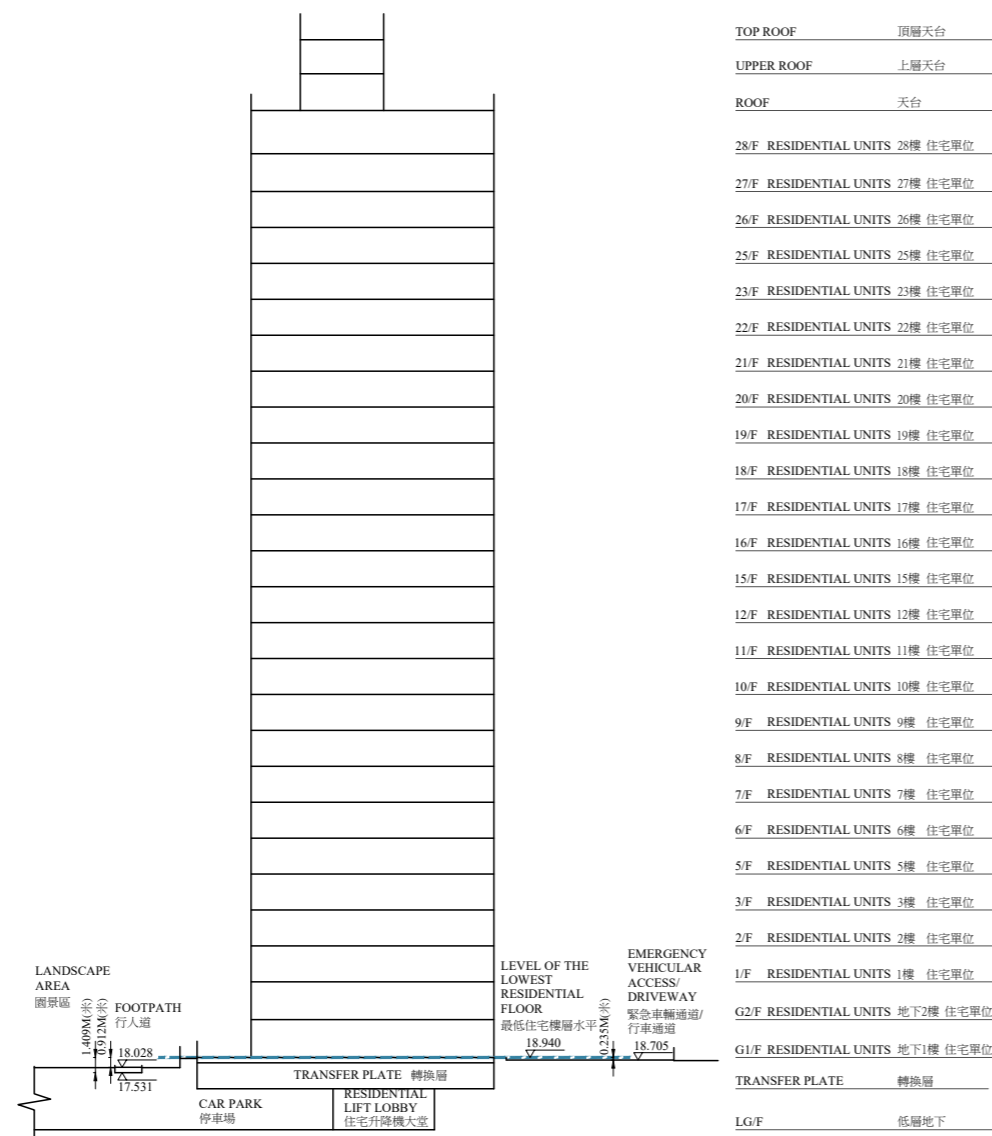
1. 代表香港主水平基準以上的高度 (米)。
2. 虛線為建築物最低住宅樓層水平。
3. 毗鄰建築物的緊急車輛通道/行車通道為香港主水平基準以上18.704米至18.720米。
4. 毗鄰建築物的一段行人道為香港主水平基準以上17.548米至18.024米。



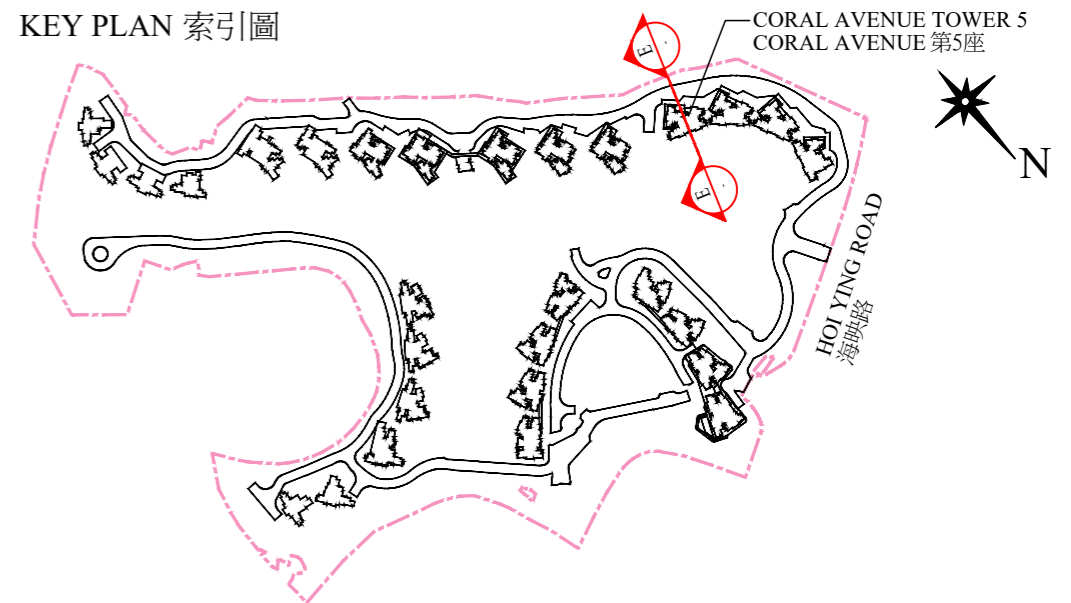
# CROSS-SECTION PLAN OF BUILDING IN THE PHASE 期數中的建築物的橫截面圖

## CROSS-SECTION PLAN E-E 橫截面圖 E-E

CORAL AVENUE TOWER 5  
CORAL AVENUE 第5座



KEY PLAN 索引圖



Boundary of the Development  
發展項目的界線

Notes:

1. Denotes height (in metres) above the Hong Kong Principal Datum.
2. Dotted line denotes the level of the lowest residential floor of the building.
3. The parts of Emergency Vehicular Access/ Driveway adjacent to the building is 18.705 metres above the Hong Kong Principal Datum.
4. The parts of Footpath adjacent to the building is 17.531 metres to 18.028 metres above the Hong Kong Principal Datum.

備註:

1. 代表香港主水平基準以上的高度(米)。
2. 虛線為建築物最低住宅樓層水平。
3. 毗鄰建築物的緊急車輛通道/行車通道為香港主水平基準以上18.705米。
4. 毗鄰建築物的一段行人道為香港主水平基準以上17.531米至18.028米。