

# FLOOR PLANS OF RESIDENTIAL PROPERTIES IN THE PHASE

## 期數的住宅物業的樓面平面圖

### LEGEND OF THE TERMS AND ABBREVIATIONS FOR FLOOR PLANS

樓面平面圖中所使用名詞及簡稱之圖例

“AB”	= BAFFLE TYPE ACOUSTIC BALCONY	擋音式減音露台
“AB” (X/F ONLY)	= BAFFLE TYPE ACOUSTIC BALCONY (X/F ONLY)	擋音式減音露台只於 X 樓
ACP	= AIR-CONDITIONER PLATFORM	冷氣機平台
ACOUSTIC SLIDING PANEL	= ACOUSTIC SLIDING PANEL	減音滑動板
ACOUSTIC SLIDING PANEL (X/F ONLY)	= ACOUSTIC SLIDING PANEL (X/F ONLY)	減音滑動板只於 X 樓
AD RM	= AIR DUCT ROOM	風管槽房
AF	= ARCHITECTURAL FEATURE	建築裝飾
AF ABOVE	= ARCHITECTURAL FEATURE ABOVE	建築裝飾置上
AF ABOVE AT X/F	= ARCHITECTURAL FEATURE ABOVE AT X/F	建築裝飾置上於 X 樓
AF AT X/F ONLY	= ARCHITECTURAL FEATURE AT X/F ONLY	建築裝飾只於 X 樓
AF AT X/F & X/F ONLY	= ARCHITECTURAL FEATURE AT X/F AND X/F ONLY	建築裝飾只於 X 樓及 X 樓
ALUM. GRILLE ABOVE	= ALUMINIUM GRILLE ABOVE	鋁質隔柵置上
“AW”	= BAFFLE TYPE ACOUSTIC WINDOW	擋音式減音窗
“AW” (X/F ONLY)	= BAFFLE TYPE ACOUSTIC WINDOW (X/F ONLY)	擋音式減音窗只於 X 樓
A/C OUTDOOR UNIT	= AIR-CONDITIONER OUTDOOR UNIT	冷氣機室外機
BAL	= BALCONY	露台
BATH 1	= BATHROOM 1	浴室 1
BR1	= BEDROOM 1	睡房 1
BR2	= BEDROOM 2	睡房 2
BUILDING LINE ABOVE	= BUILDING LINE ABOVE	建築物界線置上
COMMON AREA FOR MAINTENANCE	= COMMON AREA FOR MAINTENANCE	供維修用之公用範圍
COMMON FR	= COMMON FLAT ROOF	公用平台
CORRIDOR	= CORRIDOR	走廊
COVERED LANDSCAPE	= COVERED LANDSCAPE	有蓋園景
DH	= DOG HOUSE	管道房
DH AT L/L	= DOG HOUSE AT LOW LEVEL	管道房於低位
DN	= DOWN	落
EAD	= EXHAUST AIR DUCT	排氣管道
EL	= ELECTRICAL DUCT	電力管道槽
ELR	= ELECTRICAL ROOM	電力管道房
ELV	= EXTRA-LOW VOLTAGE DUCT	特低壓電管道槽
EMC	= ELECTRICAL METER CABINET	電錶櫃
EMR	= ELECTRICAL METER ROOM	電錶房
FAN ROOM	= FAN ROOM	風扇房
FEATURE WALL	= FEATURE WALL	裝飾牆
FIRE ALARM PANEL	= FIRE ALARM PANEL	火警警報信號板

#### Notes:

- There may be architectural features on external walls of some of the floors.
- Common pipes exposed and/or enclosed in cladding are located at/adjacent to balcony and/or flat roof and/or utility platform and/or air-conditioner platform and/or external wall and/or roof of some residential units.
- There are sunken slabs and/or ceiling bulkheads at living rooms, dining rooms, bedrooms, utility rooms, store room, corridors, bathrooms, lavatories, open kitchens and kitchens of some residential units for the air-conditioning system and/or mechanical and electrical service. There are exposed pipes/ductings for air-conditioning system and/or mechanical and electrical service within some utility rooms and/or lavatories.
- Balconies and utility platforms are non-enclosed areas.
- Symbols of fittings and fitments shown on the floor plans, such as bathtubs, sink, water closets, shower, sink counter, etc, are architectural symbols retrieved from the latest approved general building plans for general indication only.
- For some residential units, the air-conditioner platform(s) outside the unit will be placed with air-conditioner outdoor unit(s) belonging to that unit and/or other residential units.

#### 備註:

- 部份樓層外牆範圍設有建築裝飾。
- 部份住宅單位的露台及/或平台及/或工作平台及/或冷氣機平台及/或外牆及/或天台及/或附近設有外露及/或藏於外牆裝飾板內之公用喉管。
- 部份住宅單位客廳、飯廳、睡房、工作間、儲物室、走廊、浴室、洗手間、開放式廚房以及廚房天花有跌級樓板及/或假天花用以裝置冷氣系統及/或其他機電設備。部份工作間及/或洗手間內設有冷氣及/或機電設備之外露喉管/管道。
- 露台及工作平台為不可封閉地方。
- 樓面平面圖上所顯示的形象裝置符號，例如浴缸、洗滌盆、坐廁、淋浴間、洗滌盆櫃等乃摘自最新的經批准的建築圖則，只作一般性標誌。
- 部份住宅物業外的冷氣機平台將會放置屬於其單位及/或其他住宅物業的一部或多部冷氣機室外機。

# FLOOR PLANS OF RESIDENTIAL PROPERTIES IN THE PHASE

## 期數的住宅物業的樓面平面圖

### LEGEND OF THE TERMS AND ABBREVIATIONS FOR FLOOR PLANS

#### 樓面平面圖中所使用名詞及簡稱之圖例

FLUSHING WATER TANK & PUMP ROOM	= FLUSHING WATER TANK AND PUMP ROOM	沖廁水缸及泵房
FR	= FLAT ROOF	平台
FR AT X/F	= FLAT ROOF AT X/F	平台於 X 樓
GENSET EAD	= GENSET EXHAUST AIR DUCT	發電機排氣風管槽
HR	= HOSE REEL	消防喉轆
HR AT H/L	= HOSE REEL AT HIGH LEVEL	消防喉轆於高位
KIT	= KITCHEN	廚房
LAV	= LAVATORY	洗手間
LIFT	= LIFT	升降機
LIFT LOBBY	= LIFT LOBBY	升降機大堂
LIFT SHAFT	= LIFT SHAFT	升降機槽
LIV/DIN	= LIVING ROOM / DINING ROOM	客廳 / 飯廳
“M”	= MAINTENANCE WINDOW (CLOSED EXCEPT FOR MAINTENANCE ACCESS ONLY)	供維修用之窗戶（除維修用途外關閉）
“M” (X/F ONLY)	= MAINTENANCE WINDOW (CLOSED EXCEPT FOR MAINTENANCE ACCESS ONLY) (X/F ONLY)	供維修用之窗戶（除維修用途外關閉）只於 X 樓
M. BATH	= MASTER BATHROOM	主人浴室
MBR	= MASTER BEDROOM	主人睡房
O KIT	= OPEN KITCHEN	開放式廚房
PA	= PLANTING AREA	種植範圍
PERFORATED DECORATIVE METAL FEATURE ABOVE	= PERFORATED DECORATIVE METAL FEATURE ABOVE	疏孔的裝飾性金屬裝飾置上
PD	= PIPE DUCT	管道槽
PD SPACE	= PIPE DUCT SPACE	管道槽空間
PG	= PRIVATE GARDEN	私人花園
POTABLE WATER PUMP ROOM	= POTABLE WATER PUMP ROOM	食水泵房
R.C. SLAB	= REINFORCED CEMENT CONCRETE SLAB	鋼筋混凝土樓板
ROOF (FOR FLAT X)	= ROOF (FOR FLAT X)	天台 (屬於單位 X)
RSMRR	= REFUSE STORAGE AND MATERIAL RECOVERY ROOM	垃圾及物料回收房
RSMRR FAN ROOM	= REFUSE STORAGE AND MATERIAL RECOVERY ROOM FAN ROOM	垃圾及物料回收房之風扇房
“SB”	= SOLID BALUSTRADE	實心圍欄
SINK	= SINK	洗滌盆
SPRINKLER CONTROL VALVE ROOM	= SPRINKLER CONTROL VALVE ROOM	消防錶及水錶房
SPRINKLER CONTROL VALVE CABINET / F.S.I.	= SPRINKLER CONTROL VALVE CABINET / FIRE SERVICE INDICATOR	花灑控制閥櫃 / 消防訊號燈
ST	= STORE ROOM	儲物室
STONE CLADDING	= STONE CLADDING	石面板

#### Notes:

- There may be architectural features on external walls of some of the floors.
- Common pipes exposed and/or enclosed in cladding are located at/adjacent to balcony and/or flat roof and/or utility platform and/or air-conditioner platform and/or external wall and/or roof of some residential units.
- There are sunken slabs and/or ceiling bulkheads at living rooms, dining rooms, bedrooms, utility rooms, store room, corridors, bathrooms, lavatories, open kitchens and kitchens of some residential units for the air-conditioning system and/or mechanical and electrical service. There are exposed pipes/ductings for air-conditioning system and/or mechanical and electrical service within some utility rooms and/or lavatories.
- Balconies and utility platforms are non-enclosed areas.
- Symbols of fittings and fitments shown on the floor plans, such as bathtubs, sink, water closets, shower, sink counter, etc, are architectural symbols retrieved from the latest approved general building plans for general indication only.
- For some residential units, the air-conditioner platform(s) outside the unit will be placed with air-conditioner outdoor unit(s) belonging to that unit and/or other residential units.

#### 備註:

- 部份樓層外牆範圍設有建築裝飾。
- 部份住宅單位的露台及／或平台及／或工作平台及／或冷氣機平台及／或外牆及／或天台及／或附近設有外露及／或藏於外牆裝飾板內之公用喉管。
- 部份住宅單位客廳、飯廳、睡房、工作間、儲物室、走廊、浴室、洗手間、開放式廚房以及廚房天花板有跌級樓板及／或假天花用以裝置冷氣系統及／或其他機電設備。部份工作間及／或洗手間內設有冷氣及／或機電設備之外露喉管／管道。
- 露台及工作平台為不可封閉地方。
- 樓面平面圖上所顯示的形象裝置符號，例如浴缸、洗滌盆、坐廁、淋浴間、洗滌盆櫃等乃摘自最新的經批准的建築圖則，只作一般性標誌。
- 部份住宅物業外的冷氣機平台將會放置屬於其單位及／或其他住宅物業的一部或多部冷氣機室外機。

# FLOOR PLANS OF RESIDENTIAL PROPERTIES IN THE PHASE

## 期數的住宅物業的樓面平面圖

### LEGEND OF THE TERMS AND ABBREVIATIONS FOR FLOOR PLANS

樓面平面圖中所使用名詞及簡稱之圖例

TGD	= TOWNGAS DUCT	煤氣管道
TRANSFER PLATE ABOVE	= TRANSFER PLATE ABOVE	轉換層置上
UP	= UP	上
UTP	= UTILITY PLATFORM	工作平台
UTR	= UTILITY ROOM	工作間
VOID	= VOID	中空
WMC	= WATER METER CABINET	水錶櫃

#### Notes:

1. There may be architectural features on external walls of some of the floors.
2. Common pipes exposed and/or enclosed in cladding are located at/adjacent to balcony and/or flat roof and/or utility platform and/or air-conditioner platform and/or external wall and/or roof of some residential units.
3. There are sunken slabs and/or ceiling bulkheads at living rooms, dining rooms, bedrooms, utility rooms, store room, corridors, bathrooms, lavatories, open kitchens and kitchens of some residential units for the air-conditioning system and/or mechanical and electrical service. There are exposed pipes/ductings for air-conditioning system and/or mechanical and electrical service within some utility rooms and/or lavatories.
4. Balconies and utility platforms are non-enclosed areas.
5. Symbols of fittings and fitments shown on the floor plans, such as bathtubs, sink, water closets, shower, sink counter, etc, are architectural symbols retrieved from the latest approved general building plans for general indication only.
6. For some residential units, the air-conditioner platform(s) outside the unit will be placed with air-conditioner outdoor unit(s) belonging to that unit and/or other residential units.

#### 備註:

1. 部份樓層外牆範圍設有建築裝飾。
2. 部份住宅單位的露台及／或平台及／或工作平台及／或冷氣機平台及／或外牆及／或天台及／或附近設有外露及／或藏於外牆裝飾板內之公用喉管。
3. 部份住宅單位客廳、飯廳、睡房、工作間、儲物室、走廊、浴室、洗手間、開放式廚房以及廚房天花有跌級樓板及／或假天花用以裝置冷氣系統及／或其他機電設備。部份工作間及／或洗手間內設有冷氣及／或機電設備之外露喉管／管道。
4. 露台及工作平台為不可封閉地方。
5. 樓面平面圖上所顯示的形象裝置符號，例如浴缸、洗滌盆、坐廁、淋浴間、洗滌盆櫃等乃摘自最新的經批准的建築圖則，只作一般性標誌。
6. 部份住宅物業外的冷氣機平台將會放置屬於其單位及／或其他住宅物業的一部或多部冷氣機室外機。

# FLOOR PLANS OF RESIDENTIAL PROPERTIES IN THE PHASE

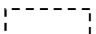
## 期數的住宅物業的樓面平面圖

	Block Name 大廈名稱	Floor 樓層	Flat 單位					
			C	D	E	F	G	H
Floor-to-floor height of each residential property (mm) 每個住宅物業的層與層之間的高度 (毫米)	Coral Avenue Tower 1 Coral Avenue 第1座	G1/F 地下1樓	3150, 3400, 3500	3150, 3400, 3500	3150, 3400, 3500	3150, 3400, 3500	3150, 3400, 3500	3150, 3400, 3500
The thickness of the floor slabs (excluding plaster) of each residential property (mm) 每個住宅物業的樓板的厚度 (不包括灰泥) (毫米)		G1/F 地下1樓	150	150, 200	150, 200	150, 200	150, 175	150

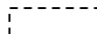
The internal areas of the residential properties on the upper floors will generally be slightly larger than those on the lower floors because of the reducing thickness of the structural walls on the upper floors. (This does not apply to the residential properties in the Phase because the design of the Phase does not involve reducing thickness of structural walls of residential properties on the upper floors and hence internal areas of those residential properties will not be increased.)

因住宅物業的較高樓層的結構牆的厚度遞減，較高樓層的內部面積，一般比較低樓層的內部面積稍大。（不適用於期數內的住宅物業，因為期數的設計是不牽涉較高樓層的住宅物業的結構牆的厚度遞減。因此，該等住宅物業的內部面積不會增加。）

### Notes:

- The dimensions of floor plans are all structural dimensions in millimeter.
- Please refer to Pages AL001 to AL003 of this sales brochure for legend of the terms and abbreviations shown in the floor plan.
-  Dotted line in a residential unit with open kitchen delineates the extent of open kitchen area.

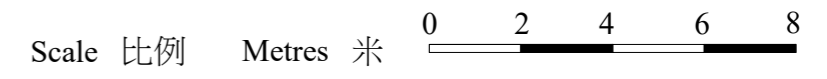
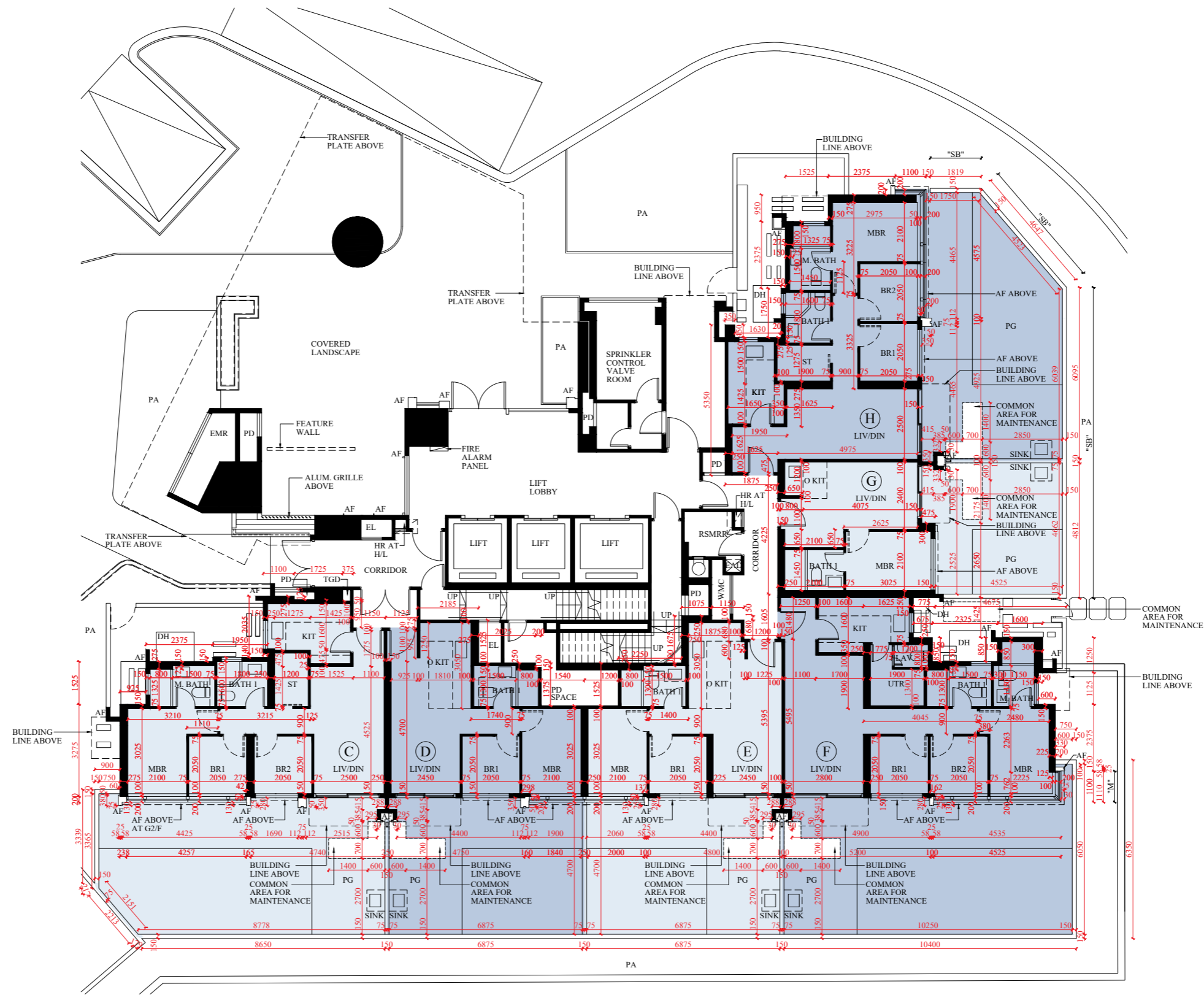
### 備註:

- 樓面平面圖所列之尺寸數字為毫米標示的建築結構尺寸。
- 樓面平面圖中顯示之名詞及簡稱圖例請參閱本售樓說明書第AL001至AL003頁。
-  設有開放式廚房的住宅單位內所顯示的虛線代表開放式廚房範圍。

# FLOOR PLANS OF RESIDENTIAL PROPERTIES IN THE PHASE

## 期數的住宅物業的樓面平面圖

### CORAL AVENUE TOWER 1 G1/F | CORAL AVENUE 第1座地下1樓



# FLOOR PLANS OF RESIDENTIAL PROPERTIES IN THE PHASE


## 期數的住宅物業的樓面平面圖

	Block Name 大廈名稱	Floor 樓層	Flat 單位						
			C	D	E	F	G	H	J
Floor-to-floor height of each residential property (mm) 每個住宅物業的層與層之間的高度 (毫米)	Coral Avenue Tower 1 Coral Avenue 第1座	G2/F 地下2樓	3150, 3400, 3500	3150, 3400, 3500	3150, 3400, 3500	3150, 3400, 3500	3150, 3400, 3500	3150, 3400, 3500	3150, 3400, 3500
The thickness of the floor slabs (excluding plaster) of each residential property (mm) 每個住宅物業的樓板的厚度 (不包括灰泥) (毫米)		G2/F 地下2樓	150	150, 200	150, 200	150, 200	150, 175	150	150, 175


The internal areas of the residential properties on the upper floors will generally be slightly larger than those on the lower floors because of the reducing thickness of the structural walls on the upper floors. (This does not apply to the residential properties in the Phase because the design of the Phase does not involve reducing thickness of structural walls of residential properties on the upper floors and hence internal areas of those residential properties will not be increased.)

因住宅物業的較高樓層的結構牆的厚度遞減，較高樓層的內部面積，一般比較低樓層的內部面積稍大。（不適用於期數內的住宅物業，因為期數的設計是不牽涉較高樓層的住宅物業的結構牆的厚度遞減。因此，該等住宅物業的內部面積不會增加。）

### Notes:

- The dimensions of floor plans are all structural dimensions in millimeter.
- Please refer to Pages AL001 to AL003 of this sales brochure for legend of the terms and abbreviations shown in the floor plan.
-  Dotted line in a residential unit with open kitchen delineates the extent of open kitchen area.

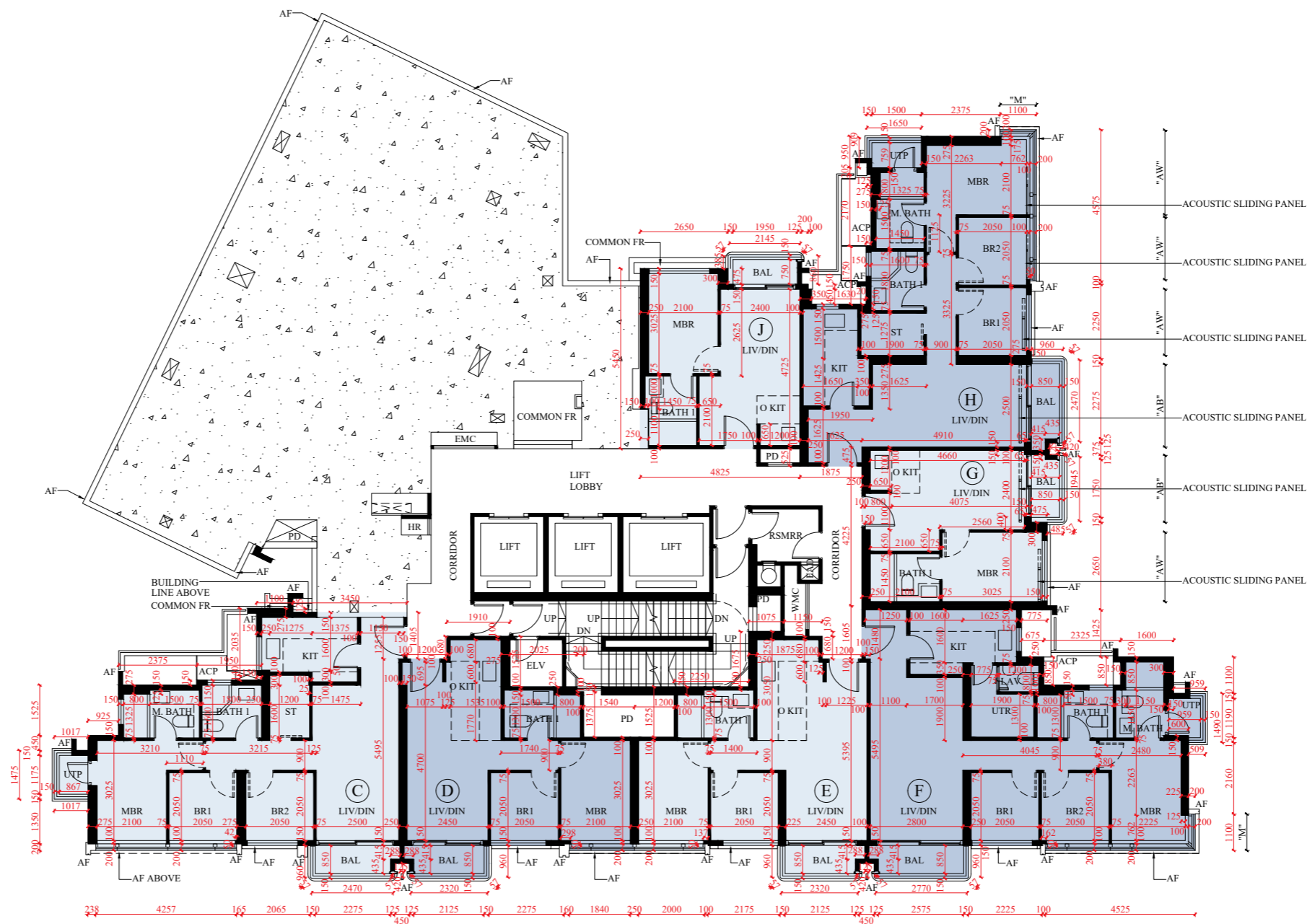
### 備註:

- 樓面平面圖所列之尺寸數字為毫米標示的建築結構尺寸。
- 樓面平面圖中顯示之名詞及簡稱圖例請參閱本售樓說明書第AL001至AL003頁。
-  設有開放式廚房的住宅單位內所顯示的虛線代表開放式廚房範圍。

# FLOOR PLANS OF RESIDENTIAL PROPERTIES IN THE PHASE

## 期數的住宅物業的樓面平面圖

CORAL AVENUE TOWER 1 G2/F | CORAL AVENUE 第1座地下2樓



Scale 比例 Metres 米 0 2 4 6 8

# FLOOR PLANS OF RESIDENTIAL PROPERTIES IN THE PHASE


## 期數的住宅物業的樓面平面圖

	Block Name 大廈名稱	Floor 樓層	Flat 單位								
			A	B	C	D	E	F	G	H	J
Floor-to-floor height of each residential property (mm) 每個住宅物業的層與層之間的高度 (毫米)	Coral Avenue Tower 1 Coral Avenue 第 1 座	1/F 1 樓	2975, 3225, 3325	2975, 3225, 3325	2975, 3225, 3325	2975, 3225, 3325	2975, 3225, 3325	2975, 3225, 3325	2975, 3225, 3325	2975, 3225, 3325	2975, 3225, 3325
The thickness of the floor slabs (excluding plaster) of each residential property (mm) 每個住宅物業的樓板的厚度 (不包括灰泥) (毫米)		1/F 1 樓	150	150	150	150, 200	150, 200	150, 200	150, 175	150	150, 175


The internal areas of the residential properties on the upper floors will generally be slightly larger than those on the lower floors because of the reducing thickness of the structural walls on the upper floors. (This does not apply to the residential properties in the Phase because the design of the Phase does not involve reducing thickness of structural walls of residential properties on the upper floors and hence internal areas of those residential properties will not be increased.)

因住宅物業的較高樓層的結構牆的厚度遞減，較高樓層的內部面積，一般比較低樓層的內部面積稍大。（不適用於期數內的住宅物業，因為期數的設計是不牽涉較高樓層的住宅物業的結構牆的厚度遞減。因此，該等住宅物業的內部面積不會增加。）

Notes:

- The dimensions of floor plans are all structural dimensions in millimeter.
- Please refer to Pages AL001 to AL003 of this sales brochure for legend of the terms and abbreviations shown in the floor plan.
-  Dotted line in a residential unit with open kitchen delineates the extent of open kitchen area.

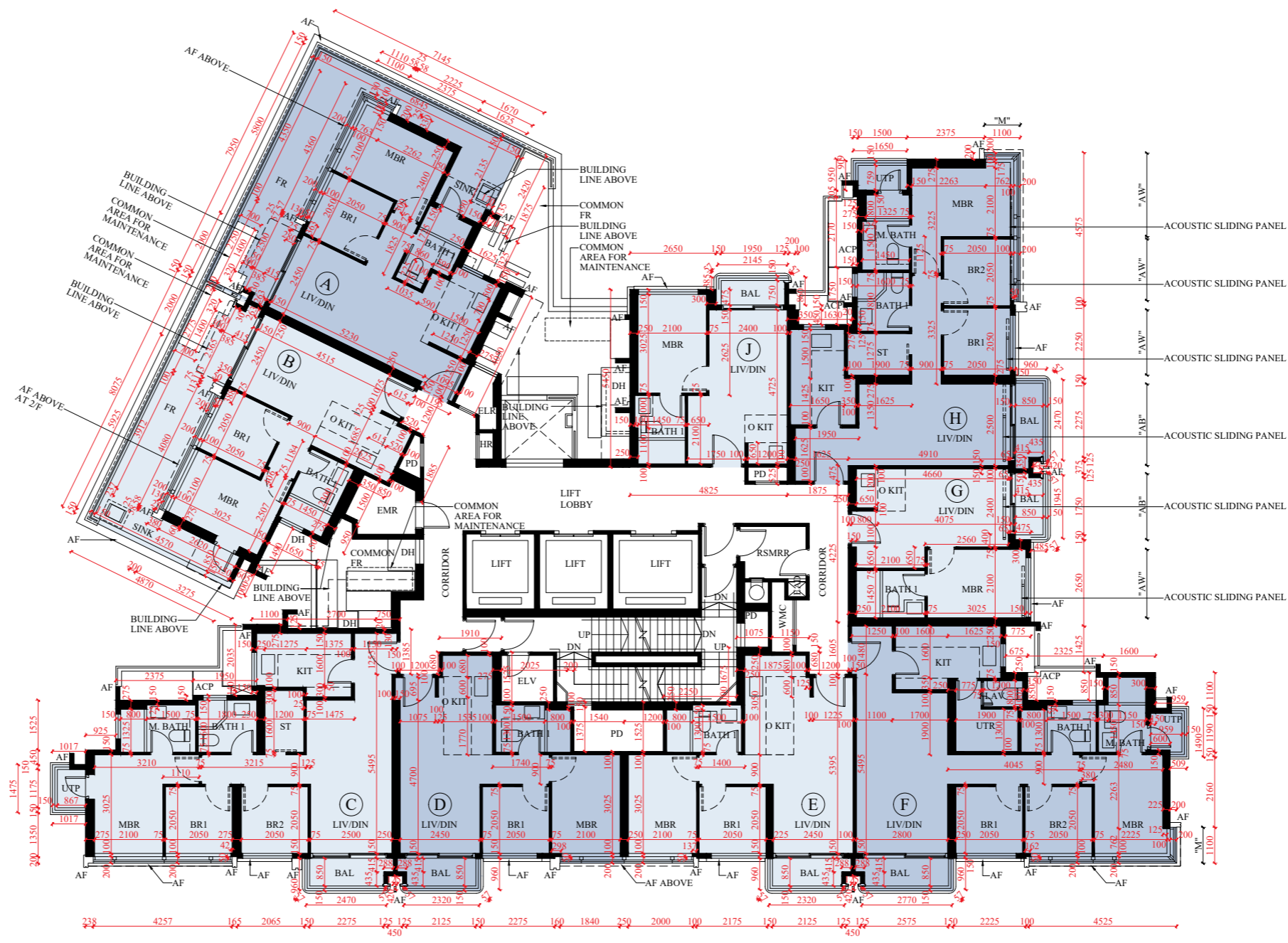
備註:

- 樓面平面圖所列之尺寸數字為毫米標示的建築結構尺寸。
- 樓面平面圖中顯示之名詞及簡稱圖例請參閱本售樓說明書第AL001至AL003頁。
-  設有開放式廚房的住宅單位內所顯示的虛線代表開放式廚房範圍。

# FLOOR PLANS OF RESIDENTIAL PROPERTIES IN THE PHASE

## 期數的住宅物業的樓面平面圖

### CORAL AVENUE TOWER 1 1/F | CORAL AVENUE 第1座1樓



Scale 比例 Metres 米 0 2 4 6 8

# FLOOR PLANS OF RESIDENTIAL PROPERTIES IN THE PHASE


## 期數的住宅物業的樓面平面圖

	Block Name 大廈名稱	Floor 樓層	Flat 單位								
			A	B	C	D	E	F	G	H	J
Floor-to-floor height of each residential property (mm) 每個住宅物業的層與層之間的高度 (毫米)	Coral Avenue Tower 1 Coral Avenue 第 1 座	2/F-3/F and 5/F 2樓至3樓 及 5樓	2975, 3225, 3325	2975, 3225, 3325	2975, 3225, 3325	2975, 3225, 3325	2975, 3225, 3325	2975, 3225, 3325	2975, 3225, 3325	2975, 3225, 3325	2975, 3225, 3325
The thickness of the floor slabs (excluding plaster) of each residential property (mm) 每個住宅物業的樓板的厚度 (不包括灰泥) (毫米)		2/F-3/F and 5/F 2樓至 3 樓 及 5 樓	150	150	150	150, 200	150, 200	150, 200	150, 175	150	150, 175


The internal areas of the residential properties on the upper floors will generally be slightly larger than those on the lower floors because of the reducing thickness of the structural walls on the upper floors. (This does not apply to the residential properties in the Phase because the design of the Phase does not involve reducing thickness of structural walls of residential properties on the upper floors and hence internal areas of those residential properties will not be increased.)

因住宅物業的較高樓層的結構牆的厚度遞減，較高樓層的內部面積，一般比較低樓層的內部面積稍大。（不適用於期數內的住宅物業，因為期數的設計是不牽涉較高樓層的住宅物業的結構牆的厚度遞減。因此，該等住宅物業的內部面積不會增加。）

Notes:

- The dimensions of floor plans are all structural dimensions in millimeter.
- Please refer to Pages AL001 to AL003 of this sales brochure for legend of the terms and abbreviations shown in the floor plan.
-  Dotted line in a residential unit with open kitchen delineates the extent of open kitchen area.

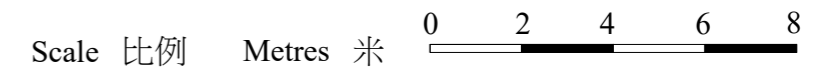
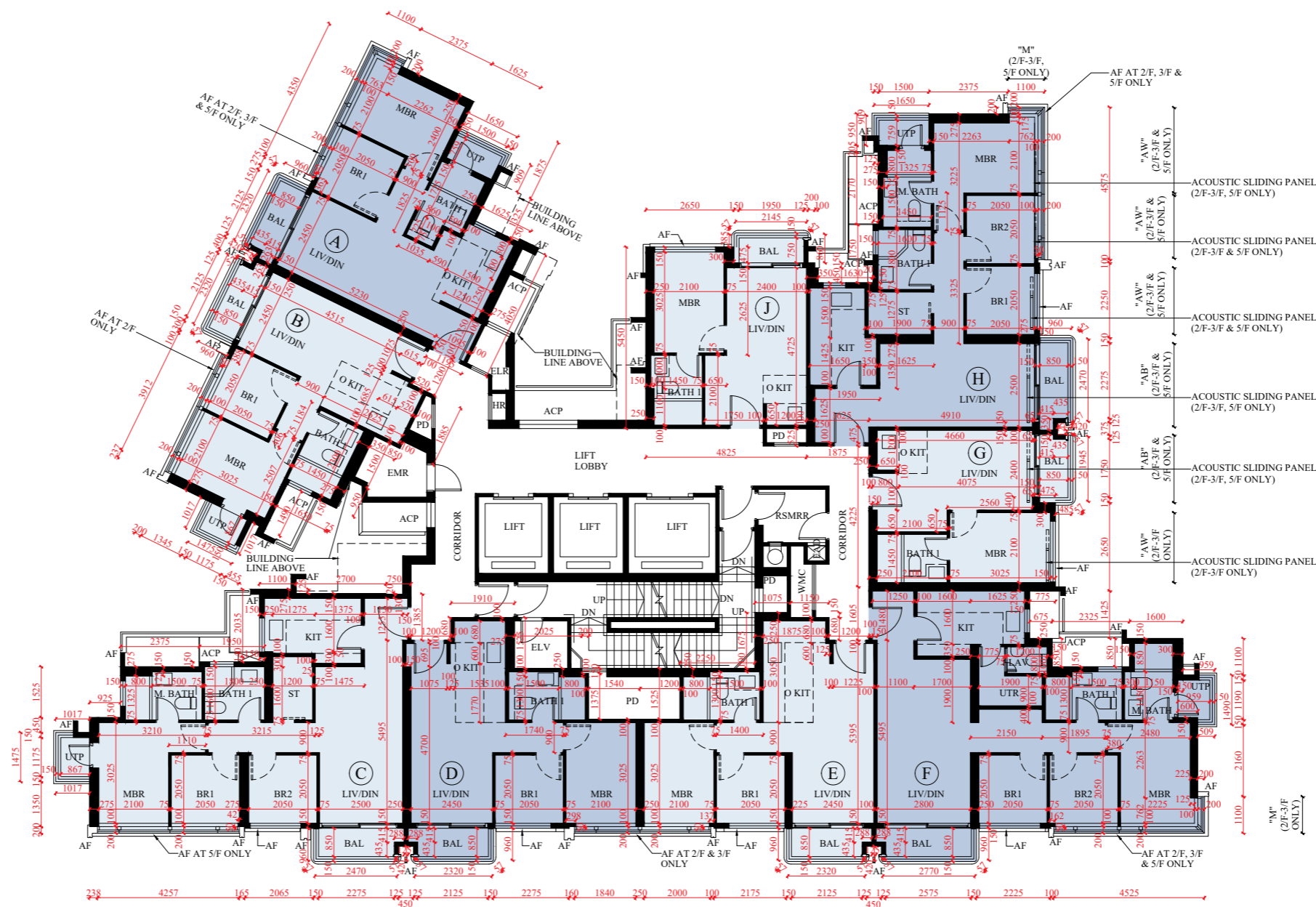
備註:

- 樓面平面圖所列之尺寸數字為毫米標示的建築結構尺寸。
- 樓面平面圖中顯示之名詞及簡稱圖例請參閱本售樓說明書第AL001至AL003頁。
-  設有開放式廚房的住宅單位內所顯示的虛線代表開放式廚房範圍。

# FLOOR PLANS OF RESIDENTIAL PROPERTIES IN THE PHASE

## 期數的住宅物業的樓面平面圖

CORAL AVENUE TOWER 1 2/F-3/F AND 5/F | CORAL AVENUE 第1座 2樓至3樓及5樓



# FLOOR PLANS OF RESIDENTIAL PROPERTIES IN THE PHASE

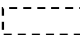
## 期數的住宅物業的樓面平面圖

	Block Name 大廈名稱	Floor 樓層	Flat 單位								
			A	B	C	D	E	F	G	H	J
Floor-to-floor height of each residential property (mm) 每個住宅物業的層與層之間的高度 (毫米)	Coral Avenue Tower 1 Coral Avenue 第 1 座	6/F 6 樓	2975, 3225, 3325	2975, 3225, 3325	2975, 3225, 3325	2975, 3225, 3325	2975, 3225, 3325	2975, 3225, 3325	2975, 3225, 3325	2975, 3225, 3325	2975, 3225, 3325
The thickness of the floor slabs (excluding plaster) of each residential property (mm) 每個住宅物業的樓板的厚度 (不包括灰泥) (毫米)		6/F 6 樓	150	150	150	150, 200	150, 200	150, 200	150, 175	150	150, 175

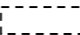
The internal areas of the residential properties on the upper floors will generally be slightly larger than those on the lower floors because of the reducing thickness of the structural walls on the upper floors. (This does not apply to the residential properties in the Phase because the design of the Phase does not involve reducing thickness of structural walls of residential properties on the upper floors and hence internal areas of those residential properties will not be increased.)

因住宅物業的較高樓層的結構牆的厚度遞減，較高樓層的內部面積，一般比較低樓層的內部面積稍大。（不適用於期數內的住宅物業，因為期數的設計是不牽涉較高樓層的住宅物業的結構牆的厚度遞減。因此，該等住宅物業的內部面積不會增加。）

Notes:

- The dimensions of floor plans are all structural dimensions in millimeter.
- Please refer to Pages AL001 to AL003 of this sales brochure for legend of the terms and abbreviations shown in the floor plan.
-  Dotted line in a residential unit with open kitchen delineates the extent of open kitchen area.

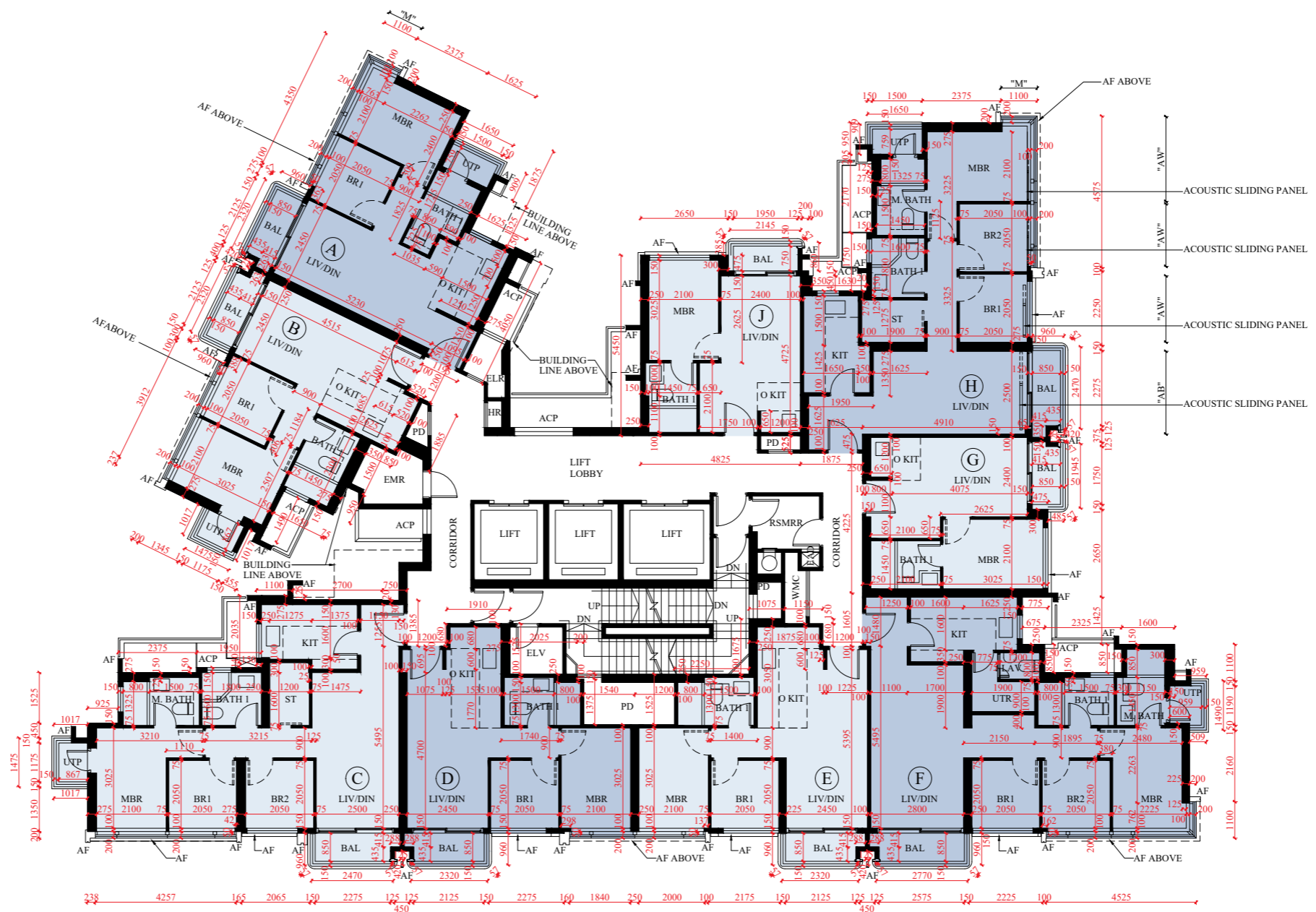
備註:

- 樓面平面圖所列之尺寸數字為毫米標示的建築結構尺寸。
- 樓面平面圖中顯示之名詞及簡稱圖例請參閱本售樓說明書第AL001至AL003頁。
-  設有開放式廚房的住宅單位內所顯示的虛線代表開放式廚房範圍。

# FLOOR PLANS OF RESIDENTIAL PROPERTIES IN THE PHASE

## 期數的住宅物業的樓面平面圖

### CORAL AVENUE TOWER 1 6/F | CORAL AVENUE 第1座 6樓



Scale 比例 Metres 米 0 2 4 6 8

# FLOOR PLANS OF RESIDENTIAL PROPERTIES IN THE PHASE

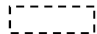
## 期數的住宅物業的樓面平面圖

	Block Name 大廈名稱	Floor 樓層	Flat 單位								
			A	B	C	D	E	F	G	H	J
Floor-to-floor height of each residential property (mm) 每個住宅物業的層與層之間的高度 (毫米)	Coral Avenue Tower 1 Coral Avenue 第 1 座	7/F-9/F 7 樓至 9 樓	2975, 3225, 3325	2975, 3225, 3325	2975, 3225, 3325	2975, 3225, 3325	2975, 3225, 3325	2975, 3225, 3325	2975, 3225, 3325	2975, 3225, 3325	2975, 3225, 3325
Floor-to-floor height of each residential property (mm) 每個住宅物業的層與層之間的高度 (毫米)		10/F 10 樓	2975, 3225, 3325	2975, 3225, 3325	2975, 3225, 3325	2975, 3225, 3325	2975, 3225, 3325	2975, 3225, 3325	3325	2975, 3225, 3325	2975, 3225, 3325
The thickness of the floor slabs (excluding plaster) of each residential property (mm) 每個住宅物業的樓板的厚度 (不包括灰泥) (毫米)		7/F-10/F 7 樓至 10 樓	150	150	150	150, 200	150, 200	150, 200	150, 175	150	150, 175

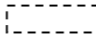
The internal areas of the residential properties on the upper floors will generally be slightly larger than those on the lower floors because of the reducing thickness of the structural walls on the upper floors. (This does not apply to the residential properties in the Phase because the design of the Phase does not involve reducing thickness of structural walls of residential properties on the upper floors and hence internal areas of those residential properties will not be increased.)

因住宅物業的較高樓層的結構牆的厚度遞減，較高樓層的內部面積，一般比較低樓層的內部面積稍大。（不適用於期數內的住宅物業，因為期數的設計是不牽涉較高樓層的住宅物業的結構牆的厚度遞減。因此，該等住宅物業的內部面積不會增加。）

### Notes:

- The dimensions of floor plans are all structural dimensions in millimeter.
- Please refer to Pages AL001 to AL003 of this sales brochure for legend of the terms and abbreviations shown in the floor plan.
-  Dotted line in a residential unit with open kitchen delineates the extent of open kitchen area.

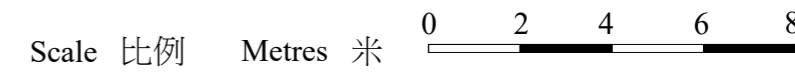
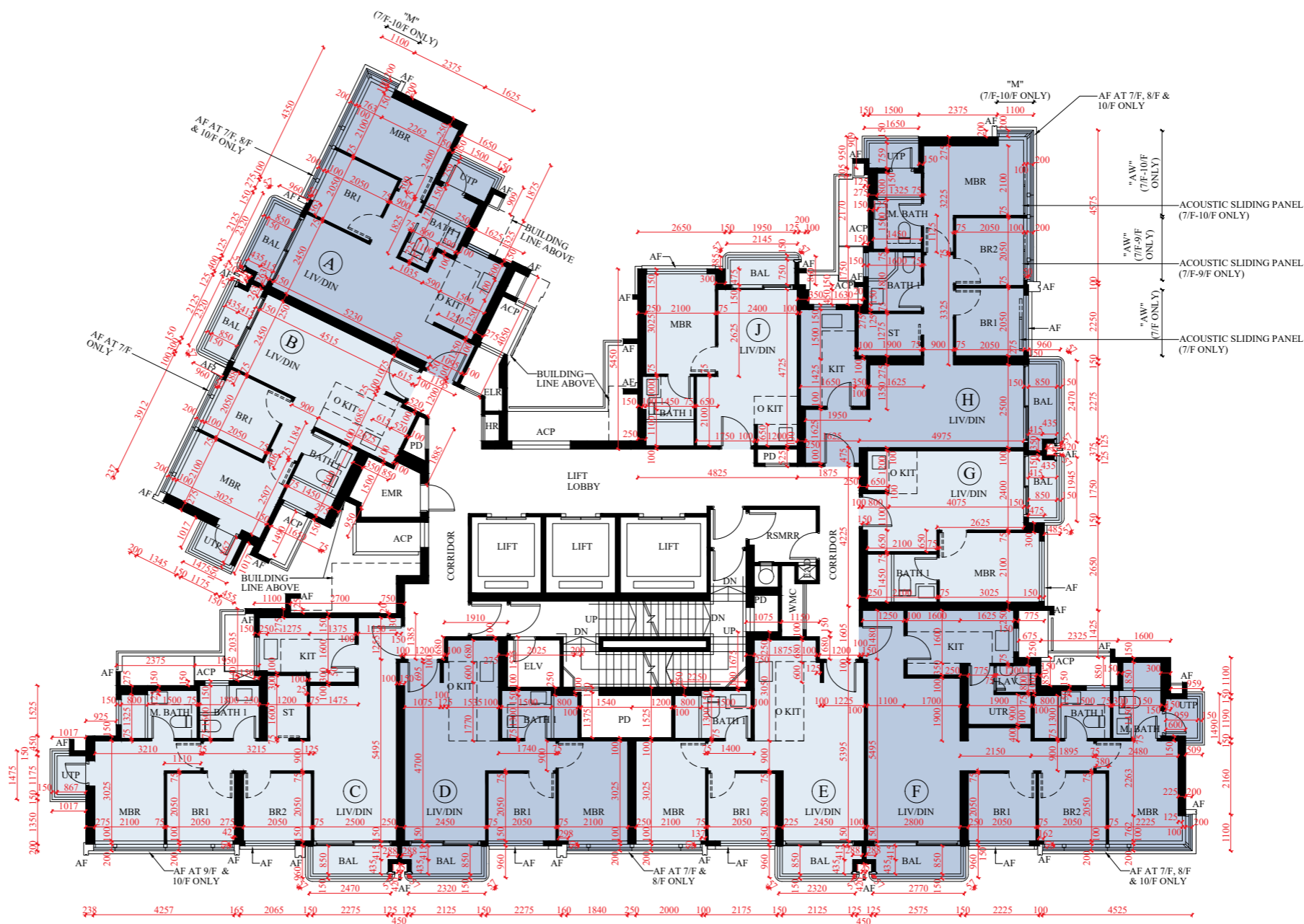
### 備註:

- 樓面平面圖所列之尺寸數字為毫米標示的建築結構尺寸。
- 樓面平面圖中顯示之名詞及簡稱圖例請參閱本售樓說明書第AL001至AL003頁。
-  設有開放式廚房的住宅單位內所顯示的虛線代表開放式廚房範圍。

# FLOOR PLANS OF RESIDENTIAL PROPERTIES IN THE PHASE

## 期數的住宅物業的樓面平面圖

CORAL AVENUE TOWER 1 7/F-10/F | CORAL AVENUE 第1座 7樓至10樓



# FLOOR PLANS OF RESIDENTIAL PROPERTIES IN THE PHASE

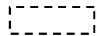
## 期數的住宅物業的樓面平面圖

	Block Name 大廈名稱	Floor 樓層	Flat 單位							
			A	B	C	D	E	F	G	H
Floor-to-floor height of each residential property (mm) 每個住宅物業的層與層之間的高度 (毫米)	Coral Avenue Tower 1 Coral Avenue 第1座	11/F 11樓	2975, 3225, 3325	2975, 3225, 3325	2975, 3225, 3325	2975, 3225, 3325	2975, 3225, 3325	2975, 3225, 3325	2975, 3225, 3325	2975, 3225, 3325
The thickness of the floor slabs (excluding plaster) of each residential property (mm) 每個住宅物業的樓板的厚度 (不包括灰泥) (毫米)		11/F 11樓	150	150	150	150, 200	150, 200	150, 200, 250	150, 175	150, 175


The internal areas of the residential properties on the upper floors will generally be slightly larger than those on the lower floors because of the reducing thickness of the structural walls on the upper floors. (This does not apply to the residential properties in the Phase because the design of the Phase does not involve reducing thickness of structural walls of residential properties on the upper floors and hence internal areas of those residential properties will not be increased.)

因住宅物業的較高樓層的結構牆的厚度遞減，較高樓層的內部面積，一般比較低樓層的內部面積稍大。（不適用於期數內的住宅物業，因為期數的設計是不牽涉較高樓層的住宅物業的結構牆的厚度遞減。因此，該等住宅物業的內部面積不會增加。）

### Notes:

- The dimensions of floor plans are all structural dimensions in millimeter.
- Please refer to Pages AL001 to AL003 of this sales brochure for legend of the terms and abbreviations shown in the floor plan.
-  Dotted line in a residential unit with open kitchen delineates the extent of open kitchen area.

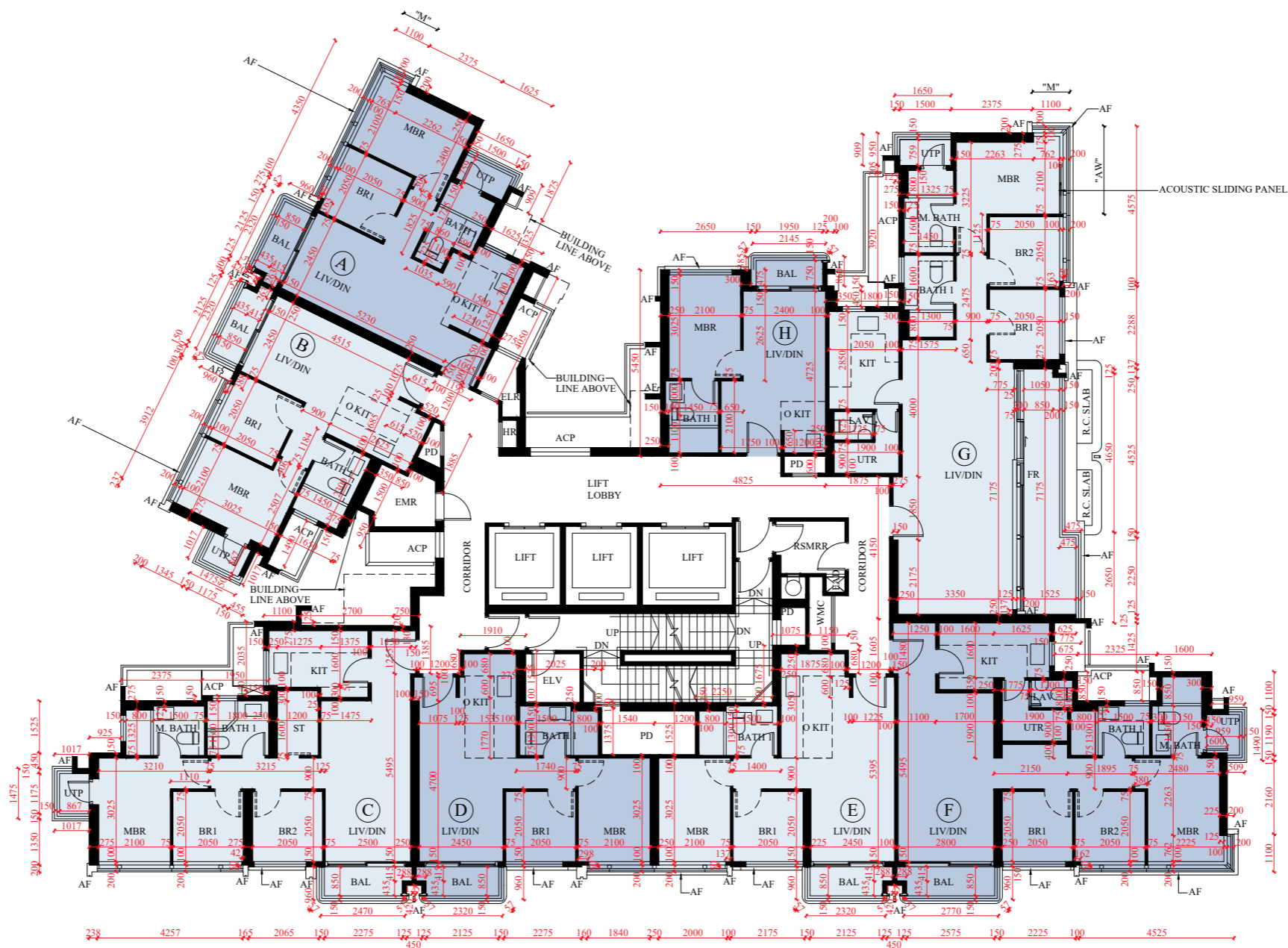
### 備註:

- 樓面平面圖所列之尺寸數字為毫米標示的建築結構尺寸。
- 樓面平面圖中顯示之名詞及簡稱圖例請參閱本售樓說明書第AL001至AL003頁。
-  設有開放式廚房的住宅單位內所顯示的虛線代表開放式廚房範圍。

# FLOOR PLANS OF RESIDENTIAL PROPERTIES IN THE PHASE

## 期數的住宅物業的樓面平面圖

### CORAL AVENUE TOWER 1 11/F | CORAL AVENUE 第1座 11樓



Scale 比例 Metres 米 0 2 4 6 8

# FLOOR PLANS OF RESIDENTIAL PROPERTIES IN THE PHASE

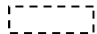
## 期數的住宅物業的樓面平面圖

	Block Name 大廈名稱	Floor 樓層	Flat 單位							
			A	B	C	D	E	F	G	H
Floor-to-floor height of each residential property (mm) 每個住宅物業的層與層之間的高度 (毫米)		12/F and 15/F 12樓及15樓	2975, 3225, 3325	2975, 3225, 3325	2975, 3225, 3325	2975, 3225, 3325	2975, 3225, 3325	2975, 3225, 3325	2975, 3225, 3325	2975, 3225, 3325
		16/F 16樓	3150, 3350, 3500	3150, 3500	3150, 3350, 3500	3000, 3150, 3500	3150, 3400, 3500	3150, 3350, 3375, 3500	3150, 3350, 3500	3050, 3150, 3400, 3500
The thickness of the floor slabs (excluding plaster) of each residential property (mm) 每個住宅物業的樓板的厚度 (不包括灰泥) (毫米)	Coral Avenue Tower 1 Coral Avenue 第1座	12/F and 15/F 12樓及15樓	150	150	150	150, 200	150, 200	150, 200, 250	150, 175	150, 175
		16/F 16樓	150, 175, 325	150	150, 175, 200	150, 300	150, 250, 375	150, 175, 200, 225, 250, 375	150, 175, 200, 250	150, 175


The internal areas of the residential properties on the upper floors will generally be slightly larger than those on the lower floors because of the reducing thickness of the structural walls on the upper floors. (This does not apply to the residential properties in the Phase because the design of the Phase does not involve reducing thickness of structural walls of residential properties on the upper floors and hence internal areas of those residential properties will not be increased.)

因住宅物業的較高樓層的結構牆的厚度遞減，較高樓層的內部面積，一般比較低樓層的內部面積稍大。（不適用於期數內的住宅物業，因為期數的設計是不牽涉較高樓層的住宅物業的結構牆的厚度遞減。因此，該等住宅物業的內部面積不會增加。）

### Notes:

- The dimensions of floor plans are all structural dimensions in millimeter.
- Please refer to Pages AL001 to AL003 of this sales brochure for legend of the terms and abbreviations shown in the floor plan.
-  Dotted line in a residential unit with open kitchen delineates the extent of open kitchen area.

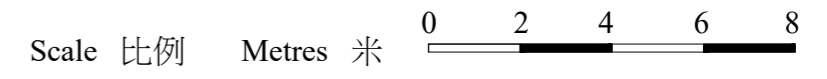
### 備註:

- 樓面平面圖所列之尺寸數字為毫米標示的建築結構尺寸。
- 樓面平面圖中顯示之名詞及簡稱圖例請參閱本售樓說明書第AL001至AL003頁。
-  設有開放式廚房的住宅單位內所顯示的虛線代表開放式廚房範圍。

# FLOOR PLANS OF RESIDENTIAL PROPERTIES IN THE PHASE

## 期數的住宅物業的樓面平面圖

CORAL AVENUE TOWER 1 12/F AND 15/F-16/F | CORAL AVENUE 第1座 12樓及15樓至16樓



# FLOOR PLANS OF RESIDENTIAL PROPERTIES IN THE PHASE

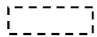
## 期數的住宅物業的樓面平面圖

	Block Name 大廈名稱	Floor 樓層	Flat 單位			
			A	B	C	D
Floor-to-floor height of each residential property (mm) 每個住宅物業的層與層之間的高度（毫米）	Coral Avenue Tower 1 Coral Avenue 第1座	17/F 17樓	4000, 5200	4000	4000	4000, 4475
The thickness of the floor slabs (excluding plaster) of each residential property (mm) 每個住宅物業的樓板的厚度（不包括灰泥）（毫米）		17/F 17樓	175, 200	175, 200, 250	175, 200, 225	150, 175, 225


The internal areas of the residential properties on the upper floors will generally be slightly larger than those on the lower floors because of the reducing thickness of the structural walls on the upper floors. (This does not apply to the residential properties in the Phase because the design of the Phase does not involve reducing thickness of structural walls of residential properties on the upper floors and hence internal areas of those residential properties will not be increased.)

因住宅物業的較高樓層的結構牆的厚度遞減，較高樓層的內部面積，一般比較低樓層的內部面積稍大。（不適用於期數內的住宅物業，因為期數的設計是不牽涉較高樓層的住宅物業的結構牆的厚度遞減。因此，該等住宅物業的內部面積不會增加。）

### Notes:

- The dimensions of floor plans are all structural dimensions in millimeter.
- Please refer to Pages AL001 to AL003 of this sales brochure for legend of the terms and abbreviations shown in the floor plan.
-  Dotted line in a residential unit with open kitchen delineates the extent of open kitchen area.

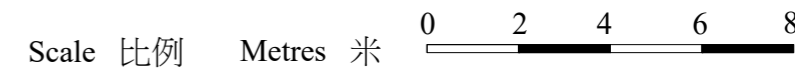
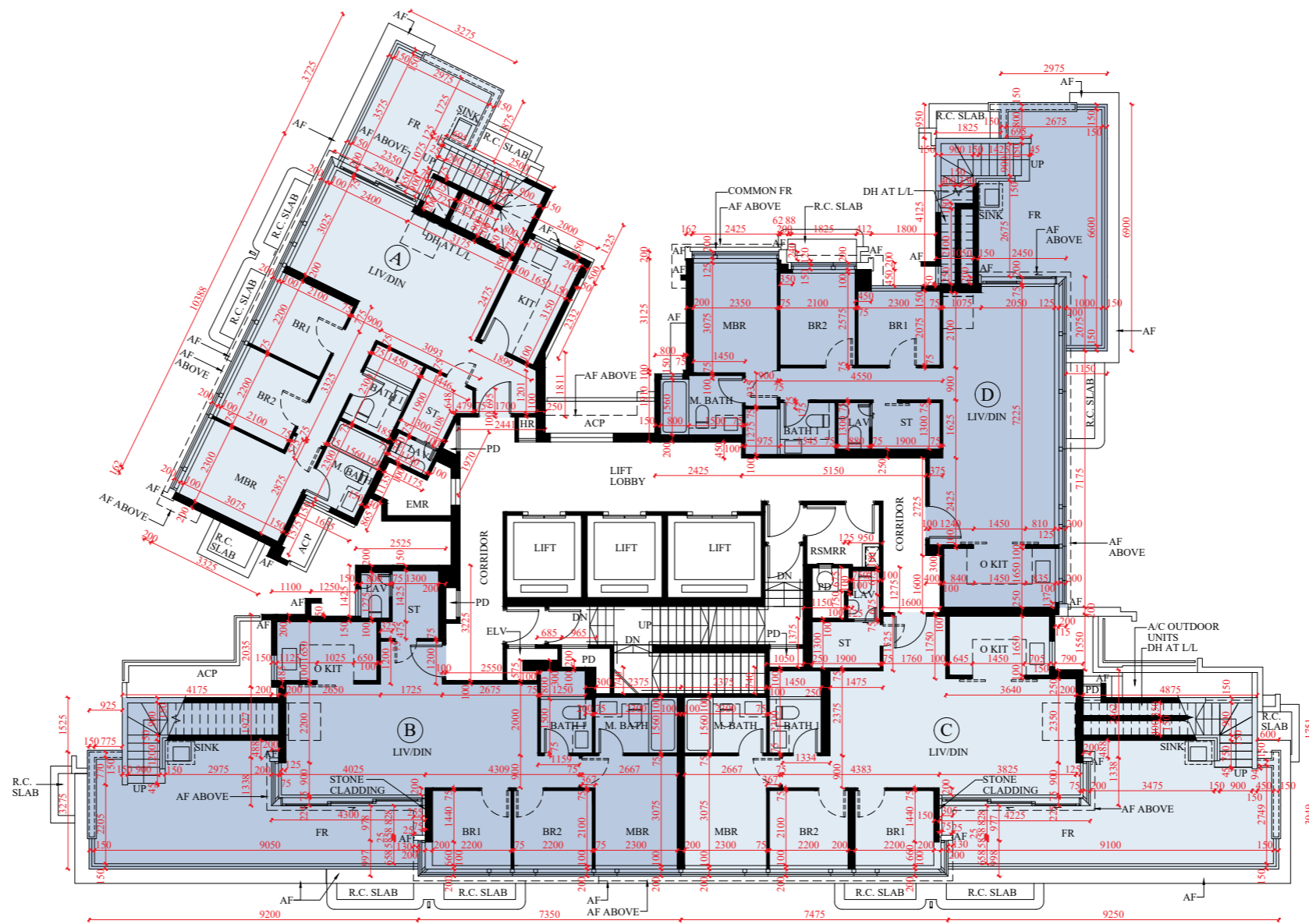
### 備註:

- 樓面平面圖所列之尺寸數字為毫米標示的建築結構尺寸。
- 樓面平面圖中顯示之名詞及簡稱圖例請參閱本售樓說明書第AL001至AL003頁。
-  設有開放式廚房的住宅單位內所顯示的虛線代表開放式廚房範圍。

# FLOOR PLANS OF RESIDENTIAL PROPERTIES IN THE PHASE

## 期數的住宅物業的樓面平面圖

CORAL AVENUE TOWER 1 17/F | CORAL AVENUE 第1座17樓



# FLOOR PLANS OF RESIDENTIAL PROPERTIES IN THE PHASE


## 期數的住宅物業的樓面平面圖

	Block Name 大廈名稱	Floor 樓層	Flat 單位			
			A	B	C	D
Floor-to-floor height of each residential property (mm) 每個住宅物業的層與層之間的高度 (毫米)	Coral Avenue Tower 1 Coral Avenue 第 1 座	Roof 天台	Not Applicable 不適用	Not Applicable 不適用	Not Applicable 不適用	Not Applicable 不適用
The thickness of the floor slabs (excluding plaster) of each residential property (mm) 每個住宅物業的樓板的厚度 (不包括灰泥) (毫米)		Roof 天台	Not Applicable 不適用	Not Applicable 不適用	Not Applicable 不適用	Not Applicable 不適用


The internal areas of the residential properties on the upper floors will generally be slightly larger than those on the lower floors because of the reducing thickness of the structural walls on the upper floors. (This does not apply to the residential properties in the Phase because the design of the Phase does not involve reducing thickness of structural walls of residential properties on the upper floors and hence internal areas of those residential properties will not be increased.)

因住宅物業的較高樓層的結構牆的厚度遞減，較高樓層的內部面積，一般比較低樓層的內部面積稍大。（不適用於期數內的住宅物業，因為期數的設計是不牽涉較高樓層的住宅物業的結構牆的厚度遞減。因此，該等住宅物業的內部面積不會增加。）

### Notes:

- The dimensions of floor plans are all structural dimensions in millimeter.
- Please refer to Pages AL001 to AL003 of this sales brochure for legend of the terms and abbreviations shown in the floor plan.
-  Dotted line in a residential unit with open kitchen delineates the extent of open kitchen area.

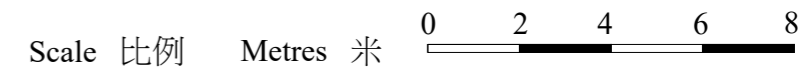
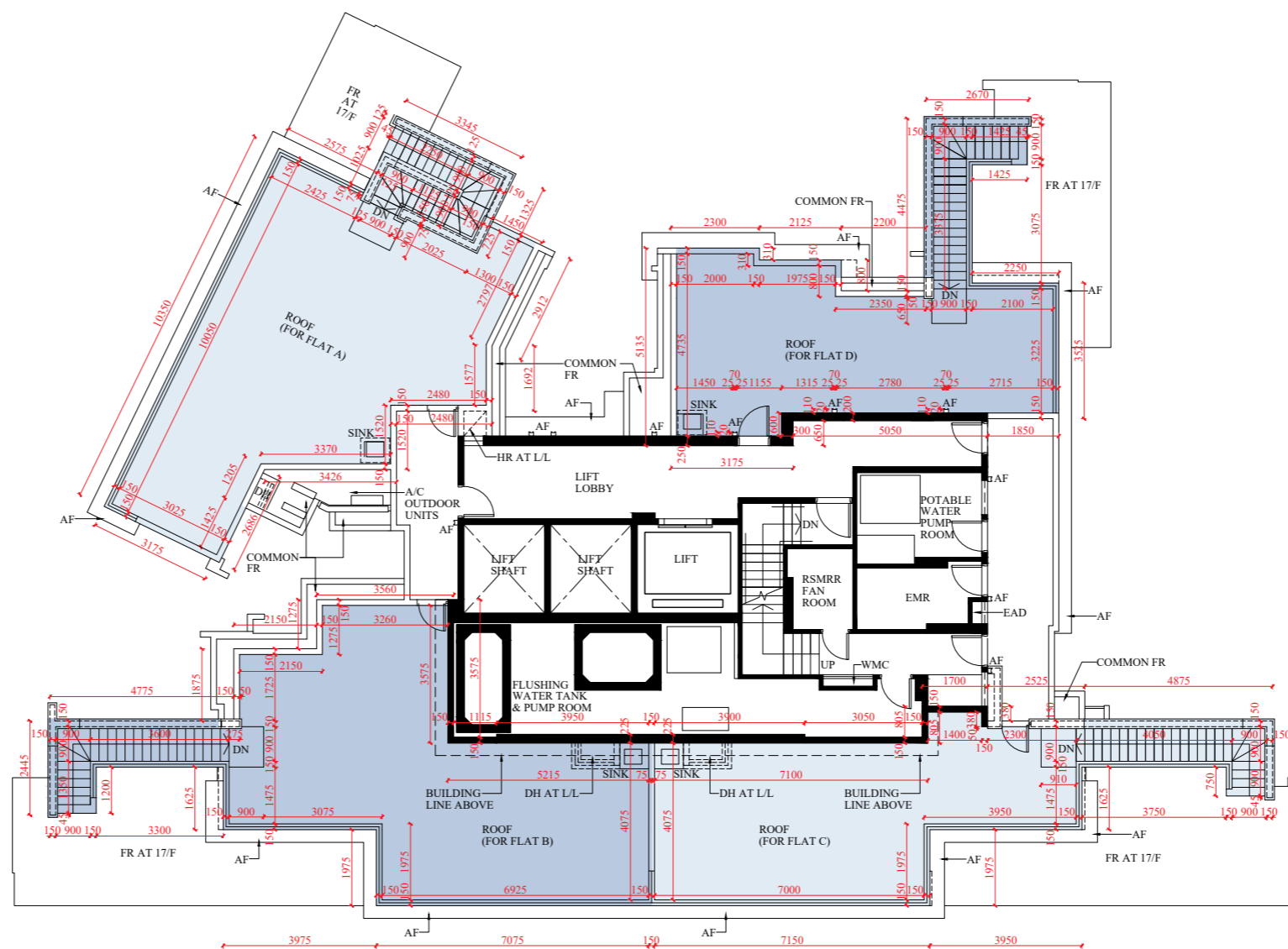
### 備註:

- 樓面平面圖所列之尺寸數字為毫米標示的建築結構尺寸。
- 樓面平面圖中顯示之名詞及簡稱圖例請參閱本售樓說明書第AL001至AL003頁。
-  設有開放式廚房的住宅單位內所顯示的虛線代表開放式廚房範圍。

# FLOOR PLANS OF RESIDENTIAL PROPERTIES IN THE PHASE

## 期數的住宅物業的樓面平面圖

### CORAL AVENUE TOWER 1 ROOF | CORAL AVENUE 第1座 天台



# FLOOR PLANS OF RESIDENTIAL PROPERTIES IN THE PHASE


## 期數的住宅物業的樓面平面圖

	Block Name 大廈名稱	Floor 樓層	Flat 單位					
			C	D	E	F	G	H
Floor-to-floor height of each residential property (mm) 每個住宅物業的層與層之間的高度 (毫米)	Coral Avenue Tower 2 Coral Avenue 第2座	G1/F 地下1樓	3150, 3400, 3500	3150, 3400, 3500	3150, 3400, 3500	3150, 3430, 3500	3150, 3400, 3500	3150, 3500
The thickness of the floor slabs (excluding plaster) of each residential property (mm) 每個住宅物業的樓板的厚度 (不包括灰泥) (毫米)		G1/F 地下1樓	150	150, 200	150, 200	150	150	150


The internal areas of the residential properties on the upper floors will generally be slightly larger than those on the lower floors because of the reducing thickness of the structural walls on the upper floors. (This does not apply to the residential properties in the Phase because the design of the Phase does not involve reducing thickness of structural walls of residential properties on the upper floors and hence internal areas of those residential properties will not be increased.)

因住宅物業的較高樓層的結構牆的厚度遞減，較高樓層的內部面積，一般比較低樓層的內部面積稍大。（不適用於期數內的住宅物業，因為期數的設計是不牽涉較高樓層的住宅物業的結構牆的厚度遞減。因此，該等住宅物業的內部面積不會增加。）

### Notes:

- The dimensions of floor plans are all structural dimensions in millimeter.
- Please refer to Pages AL001 to AL003 of this sales brochure for legend of the terms and abbreviations shown in the floor plan.
-  Dotted line in a residential unit with open kitchen delineates the extent of open kitchen area.

### 備註:

- 樓面平面圖所列之尺寸數字為毫米標示的建築結構尺寸。
- 樓面平面圖中顯示之名詞及簡稱圖例請參閱本售樓說明書第AL001至AL003頁。
-  設有開放式廚房的住宅單位內所顯示的虛線代表開放式廚房範圍。

# FLOOR PLANS OF RESIDENTIAL PROPERTIES IN THE PHASE 期數的住宅物業的樓面平面圖

## CORAL AVENUE TOWER 2 G1/F | CORAL AVENUE 第2座地下1樓



Scale 比例 Metres 米 0 2 4 6 8

# FLOOR PLANS OF RESIDENTIAL PROPERTIES IN THE PHASE


## 期數的住宅物業的樓面平面圖

	Block Name 大廈名稱	Floor 樓層	Flat 單位					
			C	D	E	F	G	H
Floor-to-floor height of each residential property (mm) 每個住宅物業的層與層之間的高度 (毫米)	Coral Avenue Tower 2 Coral Avenue 第2座	G2/F 地下2樓	3150, 3400, 3500	3150, 3400, 3500	3150, 3400, 3500	3150, 3430, 3500	3150, 3400, 3500	3150, 3500
The thickness of the floor slabs (excluding plaster) of each residential property (mm) 每個住宅物業的樓板的厚度 (不包括灰泥) (毫米)		G2/F 地下2樓	150	150, 200	150, 200	150, 250	150	150


The internal areas of the residential properties on the upper floors will generally be slightly larger than those on the lower floors because of the reducing thickness of the structural walls on the upper floors. (This does not apply to the residential properties in the Phase because the design of the Phase does not involve reducing thickness of structural walls of residential properties on the upper floors and hence internal areas of those residential properties will not be increased.)

因住宅物業的較高樓層的結構牆的厚度遞減，較高樓層的內部面積，一般比較低樓層的內部面積稍大。（不適用於期數內的住宅物業，因為期數的設計是不牽涉較高樓層的住宅物業的結構牆的厚度遞減。因此，該等住宅物業的內部面積不會增加。）

Notes:

- The dimensions of floor plans are all structural dimensions in millimeter.
- Please refer to Pages AL001 to AL003 of this sales brochure for legend of the terms and abbreviations shown in the floor plan.
-  Dotted line in a residential unit with open kitchen delineates the extent of open kitchen area.

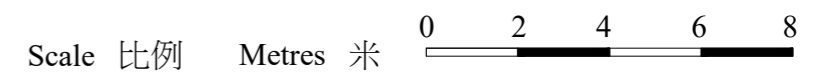
備註:

- 樓面平面圖所列之尺寸數字為毫米標示的建築結構尺寸。
- 樓面平面圖中顯示之名詞及簡稱圖例請參閱本售樓說明書第AL001至AL003頁。
-  設有開放式廚房的住宅單位內所顯示的虛線代表開放式廚房範圍。

# FLOOR PLANS OF RESIDENTIAL PROPERTIES IN THE PHASE

## 期數的住宅物業的樓面平面圖

CORAL AVENUE TOWER 2 G2/F | CORAL AVENUE 第2座 地下2樓



# FLOOR PLANS OF RESIDENTIAL PROPERTIES IN THE PHASE

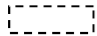
## 期數的住宅物業的樓面平面圖

	Block Name 大廈名稱	Floor 樓層	Flat 單位								
			A	B	C	D	E	F	G	H	J
Floor-to-floor height of each residential property (mm) 每個住宅物業的層與層之間的高度 (毫米)	Coral Avenue Tower 2 Coral Avenue 第2座	1/F 1樓	2975, 3225, 3325	2975, 3225, 3325	2975, 3225, 3325	2975, 3225, 3325	2975, 3225, 3325	2975, 3255, 3325	2975, 3225, 3325	2975, 3325	2975, 3225, 3325
The thickness of the floor slabs (excluding plaster) of each residential property (mm) 每個住宅物業的樓板的厚度 (不包括灰泥) (毫米)		1/F 1樓	150, 250	150	150	150, 200	150, 200	150, 200	150	150	150, 175


The internal areas of the residential properties on the upper floors will generally be slightly larger than those on the lower floors because of the reducing thickness of the structural walls on the upper floors. (This does not apply to the residential properties in the Phase because the design of the Phase does not involve reducing thickness of structural walls of residential properties on the upper floors and hence internal areas of those residential properties will not be increased.)

因住宅物業的較高樓層的結構牆的厚度遞減，較高樓層的內部面積，一般比較低樓層的內部面積稍大。（不適用於期數內的住宅物業，因為期數的設計是不牽涉較高樓層的住宅物業的結構牆的厚度遞減。因此，該等住宅物業的內部面積不會增加。）

Notes:

- The dimensions of floor plans are all structural dimensions in millimeter.
- Please refer to Pages AL001 to AL003 of this sales brochure for legend of the terms and abbreviations shown in the floor plan.
-  Dotted line in a residential unit with open kitchen delineates the extent of open kitchen area.

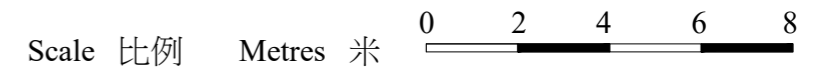
備註:

- 樓面平面圖所列之尺寸數字為毫米標示的建築結構尺寸。
- 樓面平面圖中顯示之名詞及簡稱圖例請參閱本售樓說明書第AL001至AL003頁。
-  設有開放式廚房的住宅單位內所顯示的虛線代表開放式廚房範圍。

# FLOOR PLANS OF RESIDENTIAL PROPERTIES IN THE PHASE

## 期數的住宅物業的樓面平面圖

### CORAL AVENUE TOWER 2 1/F | CORAL AVENUE 第2座1樓



# FLOOR PLANS OF RESIDENTIAL PROPERTIES IN THE PHASE

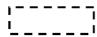
## 期數的住宅物業的樓面平面圖

	Block Name 大廈名稱	Floor 樓層	Flat 單位								
			A	B	C	D	E	F	G	H	J
Floor-to-floor height of each residential property (mm) 每個住宅物業的層與層之間的高度(毫米)	Coral Avenue Tower 2 Coral Avenue 第2座	2/F-3/F, 5/F-12/F and 15/F-20/F 2樓至3樓、5樓至12樓 及15樓至20樓	2975, 3225, 3325	2975, 3225, 3325	2975, 3225, 3325	2975, 3225, 3325	2975, 3225, 3325	2975, 3255, 3325	2975, 3225, 3325	2975, 3325	2975, 3225, 3325
		21/F 21樓	3050, 3150, 3350, 3400, 3500	3350, 3500	3150, 3350, 3500	3000, 3150, 3400, 3500	3150, 3400, 3500	3150, 3350, 3500	3150, 3375, 3500	3150, 3400, 3500	3350
The thickness of the floor slabs (excluding plaster) of each residential property (mm) 每個住宅物業的樓板的厚度(不包括灰泥)(毫米)		2/F-3/F, 5/F-12/F and 15/F-20/F 2樓至3樓、5樓至12樓 及15樓至20樓	150, 250	150	150	150, 200	150, 200	150, 200, 250	150	150	150, 175
		21/F 21樓	150, 225	150, 175	150, 175, 200	150, 300	150, 200	150, 175, 250	150, 200	150	175, 225


The internal areas of the residential properties on the upper floors will generally be slightly larger than those on the lower floors because of the reducing thickness of the structural walls on the upper floors. (This does not apply to the residential properties in the Phase because the design of the Phase does not involve reducing thickness of structural walls of residential properties on the upper floors and hence internal areas of those residential properties will not be increased.)

因住宅物業的較高樓層的結構牆的厚度遞減，較高樓層的內部面積，一般比較低樓層的內部面積稍大。(不適用於期數內的住宅物業，因為期數的設計是不牽涉較高樓層的住宅物業的結構牆的厚度遞減。因此，該等住宅物業的內部面積不會增加。)

### Notes:

- The dimensions of floor plans are all structural dimensions in millimeter.
- Please refer to Pages AL001 to AL003 of this sales brochure for legend of the terms and abbreviations shown in the floor plan.
-  Dotted line in a residential unit with open kitchen delineates the extent of open kitchen area.

### 備註:

- 樓面平面圖所列之尺寸數字為毫米標示的建築結構尺寸。
- 樓面平面圖中顯示之名詞及簡稱圖例請參閱本售樓說明書第AL001至AL003頁。
-  設有開放式廚房的住宅單位內所顯示的虛線代表開放式廚房範圍。

# FLOOR PLANS OF RESIDENTIAL PROPERTIES IN THE PHASE

## 期數的住宅物業的樓面平面圖

CORAL AVENUE TOWER 2 2/F-3/F, 5/F-12/F AND 15/F-21/F | CORAL AVENUE 第2座 2樓至3樓、5樓至12樓及15樓至21樓



PART PLAN OF FLAT A AT 15/F TO 21/F  
15樓至21樓A單位部分平面圖



Scale 比例 Metres 米 0 2 4 6 8

# FLOOR PLANS OF RESIDENTIAL PROPERTIES IN THE PHASE


## 期數的住宅物業的樓面平面圖

	Block Name 大廈名稱	Floor 樓層	Flat 單位			
			A	B	C	D
Floor-to-floor height of each residential property (mm) 每個住宅物業的層與層之間的高度 (毫米)	Coral Avenue Tower 2 Coral Avenue 第2座	22/F 22樓	4000	4000	4000	4000
The thickness of the floor slabs (excluding plaster) of each residential property (mm) 每個住宅物業的樓板的厚度 (不包括灰泥) (毫米)		22/F 22樓	175, 250	175, 200, 250	175, 200, 225	175, 225


The internal areas of the residential properties on the upper floors will generally be slightly larger than those on the lower floors because of the reducing thickness of the structural walls on the upper floors. (This does not apply to the residential properties in the Phase because the design of the Phase does not involve reducing thickness of structural walls of residential properties on the upper floors and hence internal areas of those residential properties will not be increased.)

因住宅物業的較高樓層的結構牆的厚度遞減，較高樓層的內部面積，一般比較低樓層的內部面積稍大。（不適用於期數內的住宅物業，因為期數的設計是不牽涉較高樓層的住宅物業的結構牆的厚度遞減。因此，該等住宅物業的內部面積不會增加。）

### Notes:

- The dimensions of floor plans are all structural dimensions in millimeter.
- Please refer to Pages AL001 to AL003 of this sales brochure for legend of the terms and abbreviations shown in the floor plan.
-  Dotted line in a residential unit with open kitchen delineates the extent of open kitchen area.

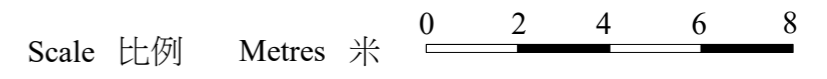
### 備註:

- 樓面平面圖所列之尺寸數字為毫米標示的建築結構尺寸。
- 樓面平面圖中顯示之名詞及簡稱圖例請參閱本售樓說明書第AL001至AL003頁。
-  設有開放式廚房的住宅單位內所顯示的虛線代表開放式廚房範圍。

# FLOOR PLANS OF RESIDENTIAL PROPERTIES IN THE PHASE

## 期數的住宅物業的樓面平面圖

### CORAL AVENUE TOWER 2 22/F | CORAL AVENUE 第2座 22樓



# FLOOR PLANS OF RESIDENTIAL PROPERTIES IN THE PHASE

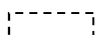
## 期數的住宅物業的樓面平面圖

	Block Name 大廈名稱	Floor 樓層	Flat 單位			
			A	B	C	D
Floor-to-floor height of each residential property (mm) 每個住宅物業的層與層之間的高度 (毫米)	Coral Avenue Tower 2 Coral Avenue 第2座	Roof 天台	Not Applicable 不適用	Not Applicable 不適用	Not Applicable 不適用	Not Applicable 不適用
The thickness of the floor slabs (excluding plaster) of each residential property (mm) 每個住宅物業的樓板的厚度 (不包括灰泥) (毫米)		Roof 天台	Not Applicable 不適用	Not Applicable 不適用	Not Applicable 不適用	Not Applicable 不適用

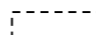
The internal areas of the residential properties on the upper floors will generally be slightly larger than those on the lower floors because of the reducing thickness of the structural walls on the upper floors. (This does not apply to the residential properties in the Phase because the design of the Phase does not involve reducing thickness of structural walls of residential properties on the upper floors and hence internal areas of those residential properties will not be increased.)

因住宅物業的較高樓層的結構牆的厚度遞減，較高樓層的內部面積，一般比較低樓層的內部面積稍大。（不適用於期數內的住宅物業，因為期數的設計是不牽涉較高樓層的住宅物業的結構牆的厚度遞減。因此，該等住宅物業的內部面積不會增加。）

### Notes:

- The dimensions of floor plans are all structural dimensions in millimeter.
- Please refer to Pages AL001 to AL003 of this sales brochure for legend of the terms and abbreviations shown in the floor plan.
-  Dotted line in a residential unit with open kitchen delineates the extent of open kitchen area.

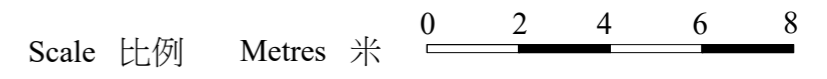
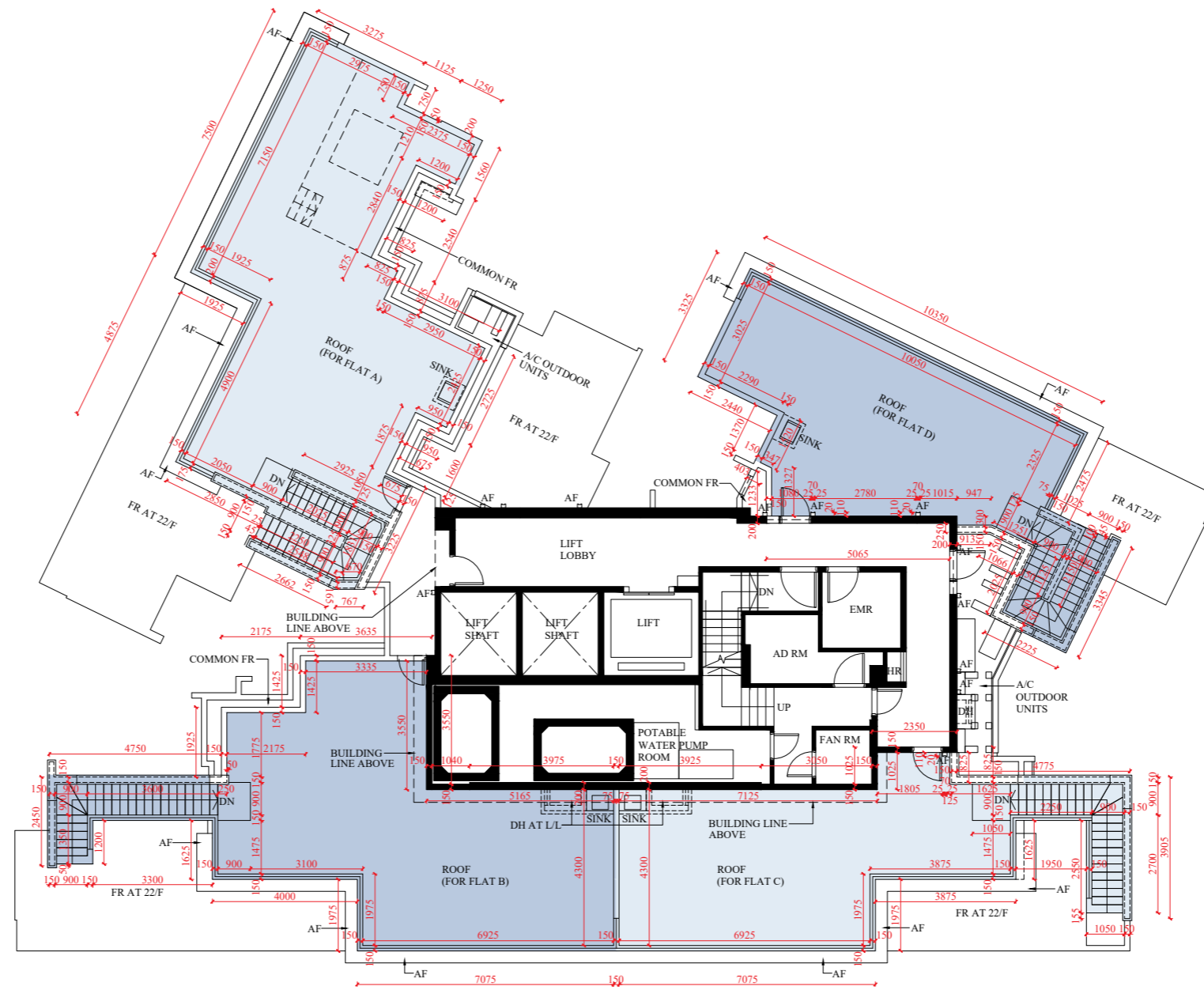
### 備註:

- 樓面平面圖所列之尺寸數字為毫米標示的建築結構尺寸。
- 樓面平面圖中顯示之名詞及簡稱圖例請參閱本售樓說明書第AL001至AL003頁。
-  設有開放式廚房的住宅單位內所顯示的虛線代表開放式廚房範圍。

# FLOOR PLANS OF RESIDENTIAL PROPERTIES IN THE PHASE

## 期數的住宅物業的樓面平面圖

### CORAL AVENUE TOWER 2 ROOF | CORAL AVENUE 第2座 天台



# FLOOR PLANS OF RESIDENTIAL PROPERTIES IN THE PHASE


## 期數的住宅物業的樓面平面圖

	Block Name 大廈名稱	Floor 樓層	Flat 單位					
			C	D	E	F	G	H
Floor-to-floor height of each residential property (mm) 每個住宅物業的層與層之間的高度 (毫米)	Coral Avenue Tower 3 Coral Avenue 第3座	G1/F 地下1樓	3150, 3400, 3500	3150, 3400, 3500	3150, 3400, 3500	3150, 3430, 3500	3150, 3400, 3500	3150, 3500
The thickness of the floor slabs (excluding plaster) of each residential property (mm) 每個住宅物業的樓板的厚度 (不包括灰泥) (毫米)		G1/F 地下1樓	150	150, 200	150, 200	150, 250	150	150


The internal areas of the residential properties on the upper floors will generally be slightly larger than those on the lower floors because of the reducing thickness of the structural walls on the upper floors. (This does not apply to the residential properties in the Phase because the design of the Phase does not involve reducing thickness of structural walls of residential properties on the upper floors and hence internal areas of those residential properties will not be increased.)

因住宅物業的較高樓層的結構牆的厚度遞減，較高樓層的內部面積，一般比較低樓層的內部面積稍大。（不適用於期數內的住宅物業，因為期數的設計是不牽涉較高樓層的住宅物業的結構牆的厚度遞減。因此，該等住宅物業的內部面積不會增加。）

### Notes:

- The dimensions of floor plans are all structural dimensions in millimeter.
- Please refer to Pages AL001 to AL003 of this sales brochure for legend of the terms and abbreviations shown in the floor plan.
-  Dotted line in a residential unit with open kitchen delineates the extent of open kitchen area.

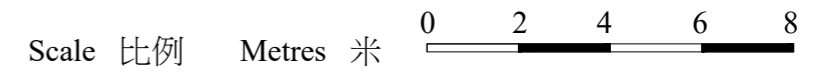
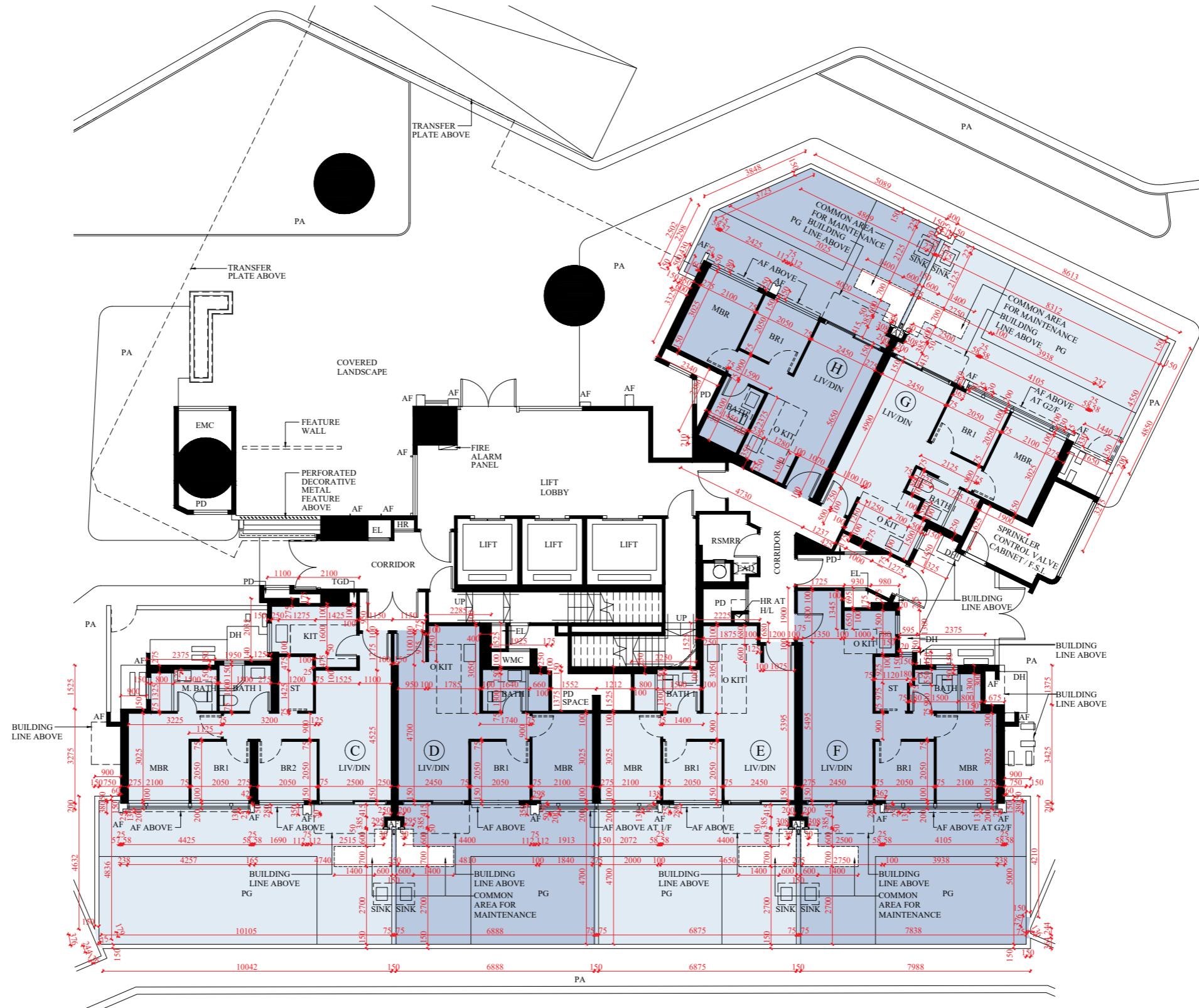
### 備註:

- 樓面平面圖所列之尺寸數字為毫米標示的建築結構尺寸。
- 樓面平面圖中顯示之名詞及簡稱圖例請參閱本售樓說明書第AL001至AL003頁。
-  設有開放式廚房的住宅單位內所顯示的虛線代表開放式廚房範圍。

# FLOOR PLANS OF RESIDENTIAL PROPERTIES IN THE PHASE

## 期數的住宅物業的樓面平面圖

### CORAL AVENUE TOWER 3 G1/F | CORAL AVENUE 第3座 地下1樓



# FLOOR PLANS OF RESIDENTIAL PROPERTIES IN THE PHASE

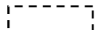
## 期數的住宅物業的樓面平面圖

	Block Name 大廈名稱	Floor 樓層	Flat 單位					
			C	D	E	F	G	H
Floor-to-floor height of each residential property (mm) 每個住宅物業的層與層之間的高度 (毫米)	Coral Avenue Tower 3 Coral Avenue 第3座	G2/F 地下2樓	3150, 3400, 3500	3150, 3400, 3500	3150, 3400, 3500	3150, 3430, 3500	3150, 3400, 3500	3150, 3500
The thickness of the floor slabs (excluding plaster) of each residential property (mm) 每個住宅物業的樓板的厚度 (不包括灰泥) (毫米)		G2/F 地下2樓	150	150, 200	150, 200	150, 250	150	150


The internal areas of the residential properties on the upper floors will generally be slightly larger than those on the lower floors because of the reducing thickness of the structural walls on the upper floors. (This does not apply to the residential properties in the Phase because the design of the Phase does not involve reducing thickness of structural walls of residential properties on the upper floors and hence internal areas of those residential properties will not be increased.)

因住宅物業的較高樓層的結構牆的厚度遞減，較高樓層的內部面積，一般比較低樓層的內部面積稍大。（不適用於期數內的住宅物業，因為期數的設計是不牽涉較高樓層的住宅物業的結構牆的厚度遞減。因此，該等住宅物業的內部面積不會增加。）

### Notes:

- The dimensions of floor plans are all structural dimensions in millimeter.
- Please refer to Pages AL001 to AL003 of this sales brochure for legend of the terms and abbreviations shown in the floor plan.
-  Dotted line in a residential unit with open kitchen delineates the extent of open kitchen area.

### 備註:

- 樓面平面圖所列之尺寸數字為毫米標示的建築結構尺寸。
- 樓面平面圖中顯示之名詞及簡稱圖例請參閱本售樓說明書第AL001至AL003頁。
-  設有開放式廚房的住宅單位內所顯示的虛線代表開放式廚房範圍。

# FLOOR PLANS OF RESIDENTIAL PROPERTIES IN THE PHASE

## 期數的住宅物業的樓面平面圖

### CORAL AVENUE TOWER 3 G2/F | CORAL AVENUE 第3座 地下2樓



Scale 比例 Metres 米 0 2 4 6 8

# FLOOR PLANS OF RESIDENTIAL PROPERTIES IN THE PHASE

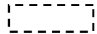
## 期數的住宅物業的樓面平面圖

	Block Name 大廈名稱	Floor 樓層	Flat 單位								
			A	B	C	D	E	F	G	H	J
Floor-to-floor height of each residential property (mm) 每個住宅物業的層與層之間的高度 (毫米)	Coral Avenue Tower 3 Coral Avenue 第3座	1/F 1樓	2975, 3225, 3325	2975, 3225, 3325	2975, 3225, 3325	2975, 3225, 3325	2975, 3225, 3325	2975, 3255, 3325	2975, 3225, 3325	2975, 3325	2975, 3225, 3325
The thickness of the floor slabs (excluding plaster) of each residential property (mm) 每個住宅物業的樓板的厚度 (不包括灰泥) (毫米)		1/F 1樓	150	150	150	150, 200	150, 200	150, 250	150	150	150, 175


The internal areas of the residential properties on the upper floors will generally be slightly larger than those on the lower floors because of the reducing thickness of the structural walls on the upper floors. (This does not apply to the residential properties in the Phase because the design of the Phase does not involve reducing thickness of structural walls of residential properties on the upper floors and hence internal areas of those residential properties will not be increased.)

因住宅物業的較高樓層的結構牆的厚度遞減，較高樓層的內部面積，一般比較低樓層的內部面積稍大。（不適用於期數內的住宅物業，因為期數的設計是不牽涉較高樓層的住宅物業的結構牆的厚度遞減。因此，該等住宅物業的內部面積不會增加。）

Notes:

- The dimensions of floor plans are all structural dimensions in millimeter.
- Please refer to Pages AL001 to AL003 of this sales brochure for legend of the terms and abbreviations shown in the floor plan.
-  Dotted line in a residential unit with open kitchen delineates the extent of open kitchen area.

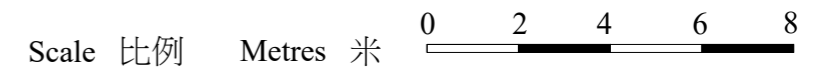
備註:

- 樓面平面圖所列之尺寸數字為毫米標示的建築結構尺寸。
- 樓面平面圖中顯示之名詞及簡稱圖例請參閱本售樓說明書第AL001至AL003頁。
-  設有開放式廚房的住宅單位內所顯示的虛線代表開放式廚房範圍。

# FLOOR PLANS OF RESIDENTIAL PROPERTIES IN THE PHASE

## 期數的住宅物業的樓面平面圖

### CORAL AVENUE TOWER 3 1/F | CORAL AVENUE 第3座1樓



# FLOOR PLANS OF RESIDENTIAL PROPERTIES IN THE PHASE


## 期數的住宅物業的樓面平面圖

	Block Name 大廈名稱	Floor 樓層	Flat 單位								
			A	B	C	D	E	F	G	H	J
Floor-to-floor height of each residential property (mm) 每個住宅物業的層與層之間的高度 (毫米)	Coral Avenue Tower 3 Coral Avenue 第3座	2/F-3/F, 5/F-12/F and 15/F-22/F 2樓至3樓、5樓至12樓及 15樓至22樓	2975, 3225, 3325	2975, 3225, 3325	2975, 3225, 3325	2975, 3225, 3325	2975, 3225, 3325	2975, 3255, 3325	2975, 3225, 3325	2975, 3325	2975, 3225, 3325
		23/F 23樓	3050, 3150, 3350, 3400, 3500	3350, 3500	3150, 3350, 3500	3000, 3150, 3500	3150, 3400, 3500	3500	3150, 3375, 3500	3150, 3400, 3500	3350
The thickness of the floor slabs (excluding plaster) of each residential property (mm) 每個住宅物業的樓板的厚度 (不包括灰泥) (毫米)	Coral Avenue Tower 3 Coral Avenue 第3座	2/F-3/F, 5/F-12/F and 15/F-22/F 2樓至3樓、5樓至12樓及 15樓至22樓	150	150	150	150, 200	150, 200	150, 250	150	150	150, 175
		23/F 23樓	150, 225	150, 175	150, 175, 200	150, 300	150, 200	150, 175, 250	150, 200	150	150, 175, 225


The internal areas of the residential properties on the upper floors will generally be slightly larger than those on the lower floors because of the reducing thickness of the structural walls on the upper floors. (This does not apply to the residential properties in the Phase because the design of the Phase does not involve reducing thickness of structural walls of residential properties on the upper floors and hence internal areas of those residential properties will not be increased.)

因住宅物業的較高樓層的結構牆的厚度遞減，較高樓層的內部面積，一般比較低樓層的內部面積稍大。（不適用於期數內的住宅物業，因為期數的設計是不牽涉較高樓層的住宅物業的結構牆的厚度遞減。因此，該等住宅物業的內部面積不會增加。）

### Notes:

- The dimensions of floor plans are all structural dimensions in millimeter.
- Please refer to Pages AL001 to AL003 of this sales brochure for legend of the terms and abbreviations shown in the floor plan.
-  Dotted line in a residential unit with open kitchen delineates the extent of open kitchen area.

### 備註:

- 樓面平面圖所列之尺寸數字為毫米標示的建築結構尺寸。
- 樓面平面圖中顯示之名詞及簡稱圖例請參閱本售樓說明書第AL001至AL003頁。
-  設有開放式廚房的住宅單位內所顯示的虛線代表開放式廚房範圍。

# FLOOR PLANS OF RESIDENTIAL PROPERTIES IN THE PHASE

## 期數的住宅物業的樓面平面圖

CORAL AVENUE TOWER 3 2/F-3/F, 5/F-12/F AND 15/F-23/F | CORAL AVENUE 第3座 2樓至3樓、5樓至12樓及15樓至23樓



PART PLAN OF FLAT A AT 17/F TO 23/F  
17樓至23樓A單位部分平面圖

PART PLAN OF FLAT G AT 20/F  
20樓G單位部分平面圖

Scale 比例 Metres 米 0 2 4 6 8

# FLOOR PLANS OF RESIDENTIAL PROPERTIES IN THE PHASE


## 期數的住宅物業的樓面平面圖

	Block Name 大廈名稱	Floor 樓層	Flat 單位			
			A	B	C	D
Floor-to-floor height of each residential property (mm) 每個住宅物業的層與層之間的高度 (毫米)	Coral Avenue Tower 3 Coral Avenue 第3座	25/F 25樓	4000	4000	4000	4000
The thickness of the floor slabs (excluding plaster) of each residential property (mm) 每個住宅物業的樓板的厚度 (不包括灰泥) (毫米)		25/F 25樓	175, 250	175, 200, 250	175, 200, 225	175, 200, 225


The internal areas of the residential properties on the upper floors will generally be slightly larger than those on the lower floors because of the reducing thickness of the structural walls on the upper floors. (This does not apply to the residential properties in the Phase because the design of the Phase does not involve reducing thickness of structural walls of residential properties on the upper floors and hence internal areas of those residential properties will not be increased.)

因住宅物業的較高樓層的結構牆的厚度遞減，較高樓層的內部面積，一般比較低樓層的內部面積稍大。（不適用於期數內的住宅物業，因為期數的設計是不牽涉較高樓層的住宅物業的結構牆的厚度遞減。因此，該等住宅物業的內部面積不會增加。）

### Notes:

- The dimensions of floor plans are all structural dimensions in millimeter.
- Please refer to Pages AL001 to AL003 of this sales brochure for legend of the terms and abbreviations shown in the floor plan.
-  Dotted line in a residential unit with open kitchen delineates the extent of open kitchen area.

### 備註:

- 樓面平面圖所列之尺寸數字為毫米標示的建築結構尺寸。
- 樓面平面圖中顯示之名詞及簡稱圖例請參閱本售樓說明書第AL001至AL003頁。
-  設有開放式廚房的住宅單位內所顯示的虛線代表開放式廚房範圍。

# FLOOR PLANS OF RESIDENTIAL PROPERTIES IN THE PHASE

## 期數的住宅物業的樓面平面圖

CORAL AVENUE TOWER 3 25/F | CORAL AVENUE 第3座 25樓



Scale 比例 Metres 米 0 2 4 6 8

# FLOOR PLANS OF RESIDENTIAL PROPERTIES IN THE PHASE


## 期數的住宅物業的樓面平面圖

	Block Name 大廈名稱	Floor 樓層	Flat 單位			
			A	B	C	D
Floor-to-floor height of each residential property (mm) 每個住宅物業的層與層之間的高度 (毫米)	Coral Avenue Tower 3 Coral Avenue 第3座	Roof 天台	Not Applicable 不適用	Not Applicable 不適用	Not Applicable 不適用	Not Applicable 不適用
The thickness of the floor slabs (excluding plaster) of each residential property (mm) 每個住宅物業的樓板的厚度 (不包括灰泥) (毫米)		Roof 天台	Not Applicable 不適用	Not Applicable 不適用	Not Applicable 不適用	Not Applicable 不適用


The internal areas of the residential properties on the upper floors will generally be slightly larger than those on the lower floors because of the reducing thickness of the structural walls on the upper floors. (This does not apply to the residential properties in the Phase because the design of the Phase does not involve reducing thickness of structural walls of residential properties on the upper floors and hence internal areas of those residential properties will not be increased.)

因住宅物業的較高樓層的結構牆的厚度遞減，較高樓層的內部面積，一般比較低樓層的內部面積稍大。（不適用於期數內的住宅物業，因為期數的設計是不牽涉較高樓層的住宅物業的結構牆的厚度遞減。因此，該等住宅物業的內部面積不會增加。）

### Notes:

- The dimensions of floor plans are all structural dimensions in millimeter.
- Please refer to Pages AL001 to AL003 of this sales brochure for legend of the terms and abbreviations shown in the floor plan.
-  Dotted line in a residential unit with open kitchen delineates the extent of open kitchen area.

### 備註:

- 樓面平面圖所列之尺寸數字為毫米標示的建築結構尺寸。
- 樓面平面圖中顯示之名詞及簡稱圖例請參閱本售樓說明書第AL001至AL003頁。
-  設有開放式廚房的住宅單位內所顯示的虛線代表開放式廚房範圍。



# FLOOR PLANS OF RESIDENTIAL PROPERTIES IN THE PHASE


## 期數的住宅物業的樓面平面圖

	Block Name 大廈名稱	Floor 樓層	Flat 單位					
			C	D	E	F	G	H
Floor-to-floor height of each residential property (mm) 每個住宅物業的層與層之間的高度 (毫米)	Coral Avenue Tower 5 Coral Avenue 第5座	G1/F 地下1樓	3150, 3400, 3500	3150, 3400, 3500	3150, 3400, 3500	3150, 3430, 3500	3150, 3400, 3500	3150, 3500
The thickness of the floor slabs (excluding plaster) of each residential property (mm) 每個住宅物業的樓板的厚度 (不包括灰泥) (毫米)		G1/F 地下1樓	150	150, 200	150, 200	150, 250	150	150


The internal areas of the residential properties on the upper floors will generally be slightly larger than those on the lower floors because of the reducing thickness of the structural walls on the upper floors. (This does not apply to the residential properties in the Phase because the design of the Phase does not involve reducing thickness of structural walls of residential properties on the upper floors and hence internal areas of those residential properties will not be increased.)

因住宅物業的較高樓層的結構牆的厚度遞減，較高樓層的內部面積，一般比較低樓層的內部面積稍大。（不適用於期數內的住宅物業，因為期數的設計是不牽涉較高樓層的住宅物業的結構牆的厚度遞減。因此，該等住宅物業的內部面積不會增加。）

### Notes:

- The dimensions of floor plans are all structural dimensions in millimeter.
- Please refer to Pages AL001 to AL003 of this sales brochure for legend of the terms and abbreviations shown in the floor plan.
-  Dotted line in a residential unit with open kitchen delineates the extent of open kitchen area.

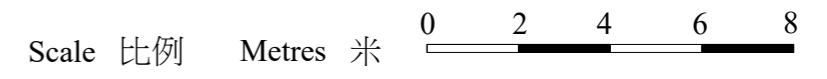
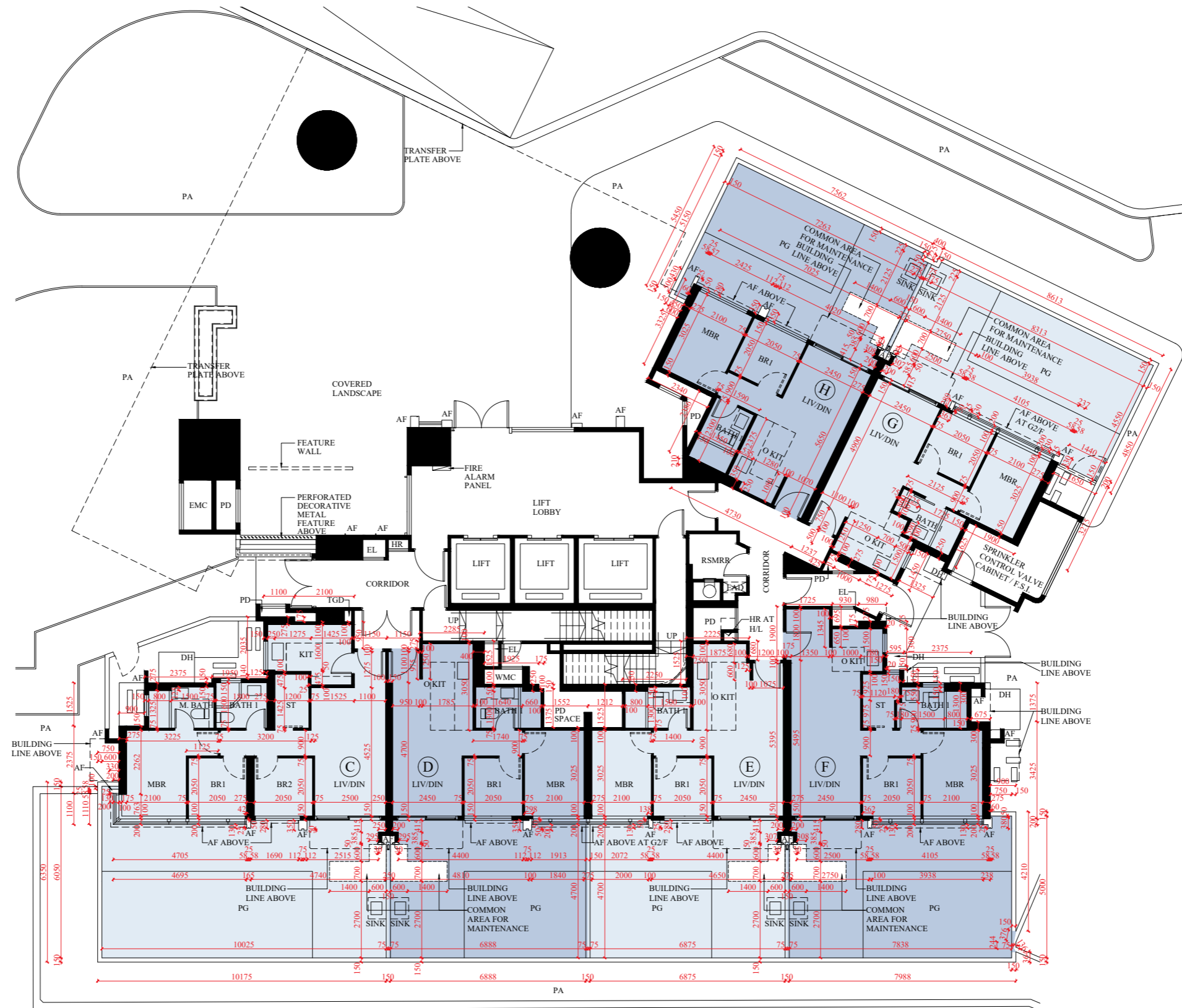
### 備註:

- 樓面平面圖所列之尺寸數字為毫米標示的建築結構尺寸。
- 樓面平面圖中顯示之名詞及簡稱圖例請參閱本售樓說明書第AL001至AL003頁。
-  設有開放式廚房的住宅單位內所顯示的虛線代表開放式廚房範圍。

# FLOOR PLANS OF RESIDENTIAL PROPERTIES IN THE PHASE

## 期數的住宅物業的樓面平面圖

### CORAL AVENUE TOWER 5 G1/F | CORAL AVENUE 第5座地下1樓



# FLOOR PLANS OF RESIDENTIAL PROPERTIES IN THE PHASE


## 期數的住宅物業的樓面平面圖

	Block Name 大廈名稱	Floor 樓層	Flat 單位					
			C	D	E	F	G	H
Floor-to-floor height of each residential property (mm) 每個住宅物業的層與層之間的高度 (毫米)	Coral Avenue Tower 5 Coral Avenue 第5座	G2/F 地下2樓	3150, 3400, 3500	3150, 3400, 3500	3150, 3400, 3500	3150, 3430, 3500	3150, 3400, 3500	3150, 3500
The thickness of the floor slabs (excluding plaster) of each residential property (mm) 每個住宅物業的樓板的厚度 (不包括灰泥) (毫米)		G2/F 地下2樓	150	150, 200	150, 200	150, 250	150	150


The internal areas of the residential properties on the upper floors will generally be slightly larger than those on the lower floors because of the reducing thickness of the structural walls on the upper floors. (This does not apply to the residential properties in the Phase because the design of the Phase does not involve reducing thickness of structural walls of residential properties on the upper floors and hence internal areas of those residential properties will not be increased.)

因住宅物業的較高樓層的結構牆的厚度遞減，較高樓層的內部面積，一般比較低樓層的內部面積稍大。（不適用於期數內的住宅物業，因為期數的設計是不牽涉較高樓層的住宅物業的結構牆的厚度遞減。因此，該等住宅物業的內部面積不會增加。）

### Notes:

- The dimensions of floor plans are all structural dimensions in millimeter.
- Please refer to Pages AL001 to AL003 of this sales brochure for legend of the terms and abbreviations shown in the floor plan.
-  Dotted line in a residential unit with open kitchen delineates the extent of open kitchen area.

### 備註:

- 樓面平面圖所列之尺寸數字為毫米標示的建築結構尺寸。
- 樓面平面圖中顯示之名詞及簡稱圖例請參閱本售樓說明書第AL001至AL003頁。
-  設有開放式廚房的住宅單位內所顯示的虛線代表開放式廚房範圍。

# FLOOR PLANS OF RESIDENTIAL PROPERTIES IN THE PHASE 期數的住宅物業的樓面平面圖

CORAL AVENUE TOWER 5 G2/F | CORAL AVENUE 第5座 地下2樓



Scale 比例 Metres 米 0 2 4 6 8

# FLOOR PLANS OF RESIDENTIAL PROPERTIES IN THE PHASE


## 期數的住宅物業的樓面平面圖

	Block Name 大廈名稱	Floor 樓層	Flat 單位								
			A	B	C	D	E	F	G	H	J
Floor-to-floor height of each residential property (mm) 每個住宅物業的層與層之間的高度 (毫米)	Coral Avenue Tower 5 Coral Avenue 第5座	1/F 1樓	2975, 3225, 3325	2975, 3225, 3325	2975, 3225, 3325	2975, 3225, 3325	2975, 3225, 3325	2975, 3255, 3325	2975, 3225, 3325	2975, 3325	2975, 3225, 3325
The thickness of the floor slabs (excluding plaster) of each residential property (mm) 每個住宅物業的樓板的厚度 (不包括灰泥) (毫米)		1/F 1樓	150, 250	150	150	150, 200	150, 200	150, 250	150	150	150, 175


The internal areas of the residential properties on the upper floors will generally be slightly larger than those on the lower floors because of the reducing thickness of the structural walls on the upper floors. (This does not apply to the residential properties in the Phase because the design of the Phase does not involve reducing thickness of structural walls of residential properties on the upper floors and hence internal areas of those residential properties will not be increased.)

因住宅物業的較高樓層的結構牆的厚度遞減，較高樓層的內部面積，一般比較低樓層的內部面積稍大。（不適用於期數內的住宅物業，因為期數的設計是不牽涉較高樓層的住宅物業的結構牆的厚度遞減。因此，該等住宅物業的內部面積不會增加。）

Notes:

- The dimensions of floor plans are all structural dimensions in millimeter.
- Please refer to Pages AL001 to AL003 of this sales brochure for legend of the terms and abbreviations shown in the floor plan.
-  Dotted line in a residential unit with open kitchen delineates the extent of open kitchen area.

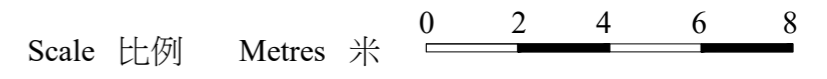
備註:

- 樓面平面圖所列之尺寸數字為毫米標示的建築結構尺寸。
- 樓面平面圖中顯示之名詞及簡稱圖例請參閱本售樓說明書第AL001至AL003頁。
-  設有開放式廚房的住宅單位內所顯示的虛線代表開放式廚房範圍。

# FLOOR PLANS OF RESIDENTIAL PROPERTIES IN THE PHASE

## 期數的住宅物業的樓面平面圖

### CORAL AVENUE TOWER 5 1/F | CORAL AVENUE 第5座1樓



# FLOOR PLANS OF RESIDENTIAL PROPERTIES IN THE PHASE

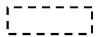
## 期數的住宅物業的樓面平面圖

	Block Name 大廈名稱	Floor 樓層	Flat 單位								
			A	B	C	D	E	F	G	H	J
Floor-to-floor height of each residential property (mm) 每個住宅物業的層與層之間的高度 (毫米)	Coral Avenue Tower 5 Coral Avenue 第5座	2/F-3/F, 5/F-12/F, 15/F-23/F and 25/F-26/F 2樓至3樓、5樓至12樓、15樓至23樓及25樓至26樓	2975, 3225, 3325	2975, 3225, 3325	2975, 3225, 3325	2975, 3225, 3325	2975, 3225, 3325	2975, 3255, 3325	2975, 3225, 3325	2975, 3325	2975, 3225, 3325
		27/F 27樓	3050, 3150, 3350, 3400, 3500	3350, 3500	3150, 3350, 3500	3000, 3150, 3500	3150, 3400, 3500	3000, 3350, 3500	3150, 3375, 3500	3150, 3400, 3500	3350
The thickness of the floor slabs (excluding plaster) of each residential property (mm) 每個住宅物業的樓板的厚度 (不包括灰泥) (毫米)	Coral Avenue Tower 5 Coral Avenue 第5座	2/F-3/F, 5/F-12/F, 15/F-23/F and 25/F-26/F 2樓至3樓、5樓至12樓、15樓至23樓及25樓至26樓	150, 250	150	150	150, 200	150, 200	150, 250	150	150	150, 175
		27/F 27樓	150, 225	150, 175	150, 175	150, 300	150, 200	175, 250	150, 200	150	150, 225


The internal areas of the residential properties on the upper floors will generally be slightly larger than those on the lower floors because of the reducing thickness of the structural walls on the upper floors. (This does not apply to the residential properties in the Phase because the design of the Phase does not involve reducing thickness of structural walls of residential properties on the upper floors and hence internal areas of those residential properties will not be increased.)

因住宅物業的較高樓層的結構牆的厚度遞減，較高樓層的內部面積，一般比較低樓層的內部面積稍大。（不適用於期數內的住宅物業，因為期數的設計是不牽涉較高樓層的住宅物業的結構牆的厚度遞減。因此，該等住宅物業的內部面積不會增加。）

### Notes:

- The dimensions of floor plans are all structural dimensions in millimeter.
- Please refer to Pages AL001 to AL003 of this sales brochure for legend of the terms and abbreviations shown in the floor plan.
-  Dotted line in a residential unit with open kitchen delineates the extent of open kitchen area.

### 備註:

- 樓面平面圖所列之尺寸數字為毫米標示的建築結構尺寸。
- 樓面平面圖中顯示之名詞及簡稱圖例請參閱本售樓說明書第AL001至AL003頁。
-  設有開放式廚房的住宅單位內所顯示的虛線代表開放式廚房範圍。

# FLOOR PLANS OF RESIDENTIAL PROPERTIES IN THE PHASE

## 期數的住宅物業的樓面平面圖

CORAL AVENUE TOWER 5 2/F-3/F, 5/F-12/F, 15/F-23/F AND 25/F-27/F | CORAL AVENUE 第5座 2樓至3樓、5樓至12樓、15樓至23樓及25樓至27樓



PART PLAN OF FLAT A AT 18/F-23/F AND 25/F-27/F  
18樓至23樓及25樓至27樓A單位部分平面圖

Scale 比例 Metres 米 0 2 4 6 8

# FLOOR PLANS OF RESIDENTIAL PROPERTIES IN THE PHASE

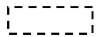
## 期數的住宅物業的樓面平面圖

	Block Name 大廈名稱	Floor 樓層	Flat 單位			
			A	B	C	D
Floor-to-floor height of each residential property (mm) 每個住宅物業的層與層之間的高度（毫米）	Coral Avenue Tower 5 Coral Avenue 第5座	28/F 28樓	4000	4000	4000	4000
The thickness of the floor slabs (excluding plaster) of each residential property (mm) 每個住宅物業的樓板的厚度（不包括灰泥）（毫米）		28/F 28樓	175, 250	175, 200, 250	175, 200, 225	175, 225


The internal areas of the residential properties on the upper floors will generally be slightly larger than those on the lower floors because of the reducing thickness of the structural walls on the upper floors. (This does not apply to the residential properties in the Phase because the design of the Phase does not involve reducing thickness of structural walls of residential properties on the upper floors and hence internal areas of those residential properties will not be increased.)

因住宅物業的較高樓層的結構牆的厚度遞減，較高樓層的內部面積，一般比較低樓層的內部面積稍大。（不適用於期數內的住宅物業，因為期數的設計是不牽涉較高樓層的住宅物業的結構牆的厚度遞減。因此，該等住宅物業的內部面積不會增加。）

### Notes:

- The dimensions of floor plans are all structural dimensions in millimeter.
- Please refer to Pages AL001 to AL003 of this sales brochure for legend of the terms and abbreviations shown in the floor plan.
-  Dotted line in a residential unit with open kitchen delineates the extent of open kitchen area.

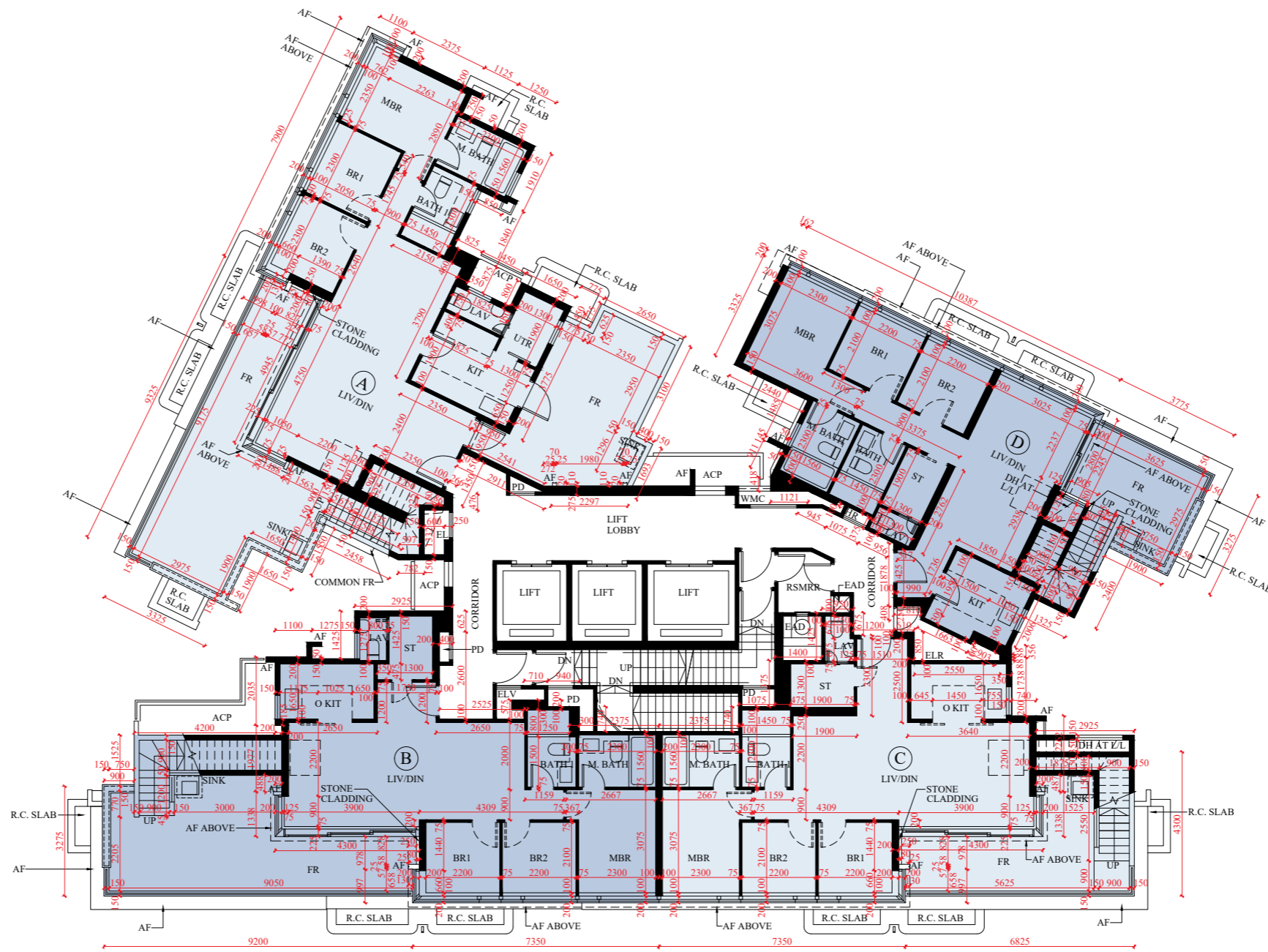
### 備註:

- 樓面平面圖所列之尺寸數字為毫米標示的建築結構尺寸。
- 樓面平面圖中顯示之名詞及簡稱圖例請參閱本售樓說明書第AL001至AL003頁。
-  設有開放式廚房的住宅單位內所顯示的虛線代表開放式廚房範圍。

# FLOOR PLANS OF RESIDENTIAL PROPERTIES IN THE PHASE

## 期數的住宅物業的樓面平面圖

CORAL AVENUE TOWER 5 28/F | CORAL AVENUE 第5座 28樓



Scale 比例 Metres 米 0 2 4 6 8

# FLOOR PLANS OF RESIDENTIAL PROPERTIES IN THE PHASE

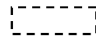
## 期數的住宅物業的樓面平面圖

	Block Name 大廈名稱	Floor 樓層	Flat 單位			
			A	B	C	D
Floor-to-floor height of each residential property (mm) 每個住宅物業的層與層之間的高度 (毫米)	Coral Avenue Tower 5 Coral Avenue 第5座	Roof 天台	Not Applicable 不適用	Not Applicable 不適用	Not Applicable 不適用	Not Applicable 不適用
The thickness of the floor slabs (excluding plaster) of each residential property (mm) 每個住宅物業的樓板的厚度 (不包括灰泥) (毫米)		Roof 天台	Not Applicable 不適用	Not Applicable 不適用	Not Applicable 不適用	Not Applicable 不適用


The internal areas of the residential properties on the upper floors will generally be slightly larger than those on the lower floors because of the reducing thickness of the structural walls on the upper floors. (This does not apply to the residential properties in the Phase because the design of the Phase does not involve reducing thickness of structural walls of residential properties on the upper floors and hence internal areas of those residential properties will not be increased.)

因住宅物業的較高樓層的結構牆的厚度遞減，較高樓層的內部面積，一般比較低樓層的內部面積稍大。（不適用於期數內的住宅物業，因為期數的設計是不牽涉較高樓層的住宅物業的結構牆的厚度遞減。因此，該等住宅物業的內部面積不會增加。）

### Notes:

- The dimensions of floor plans are all structural dimensions in millimeter.
- Please refer to Pages AL001 to AL003 of this sales brochure for legend of the terms and abbreviations shown in the floor plan.
-  Dotted line in a residential unit with open kitchen delineates the extent of open kitchen area.

### 備註:

- 樓面平面圖所列之尺寸數字為毫米標示的建築結構尺寸。
- 樓面平面圖中顯示之名詞及簡稱圖例請參閱本售樓說明書第AL001至AL003頁。
-  設有開放式廚房的住宅單位內所顯示的虛線代表開放式廚房範圍。

# FLOOR PLANS OF RESIDENTIAL PROPERTIES IN THE PHASE

## 期數的住宅物業的樓面平面圖

### CORAL AVENUE TOWER 5 ROOF | CORAL AVENUE 第5座天台

