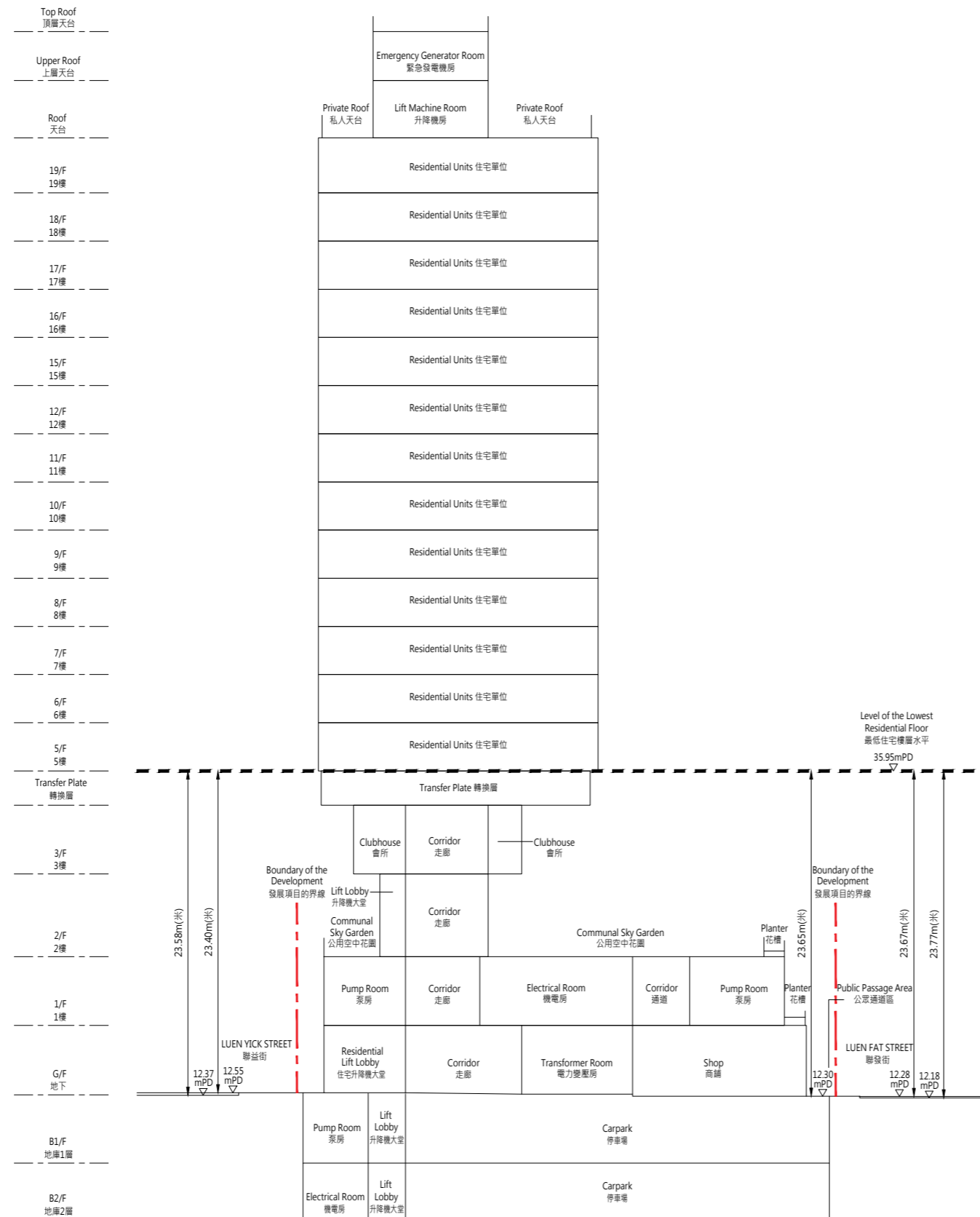
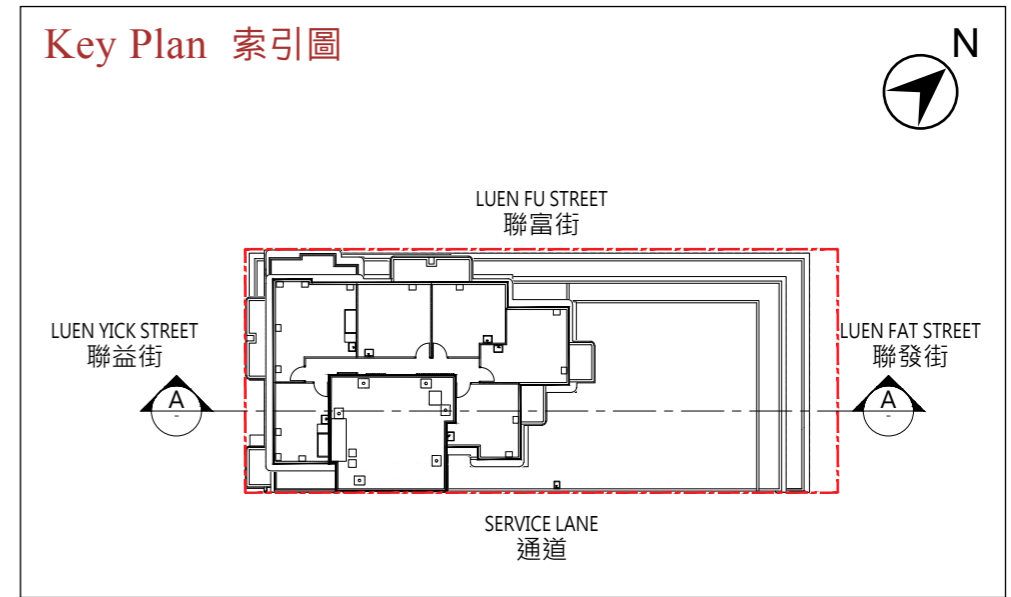


### CROSS SECTION PLAN A-A 橫截面圖 A-A



### Key Plan 索引圖

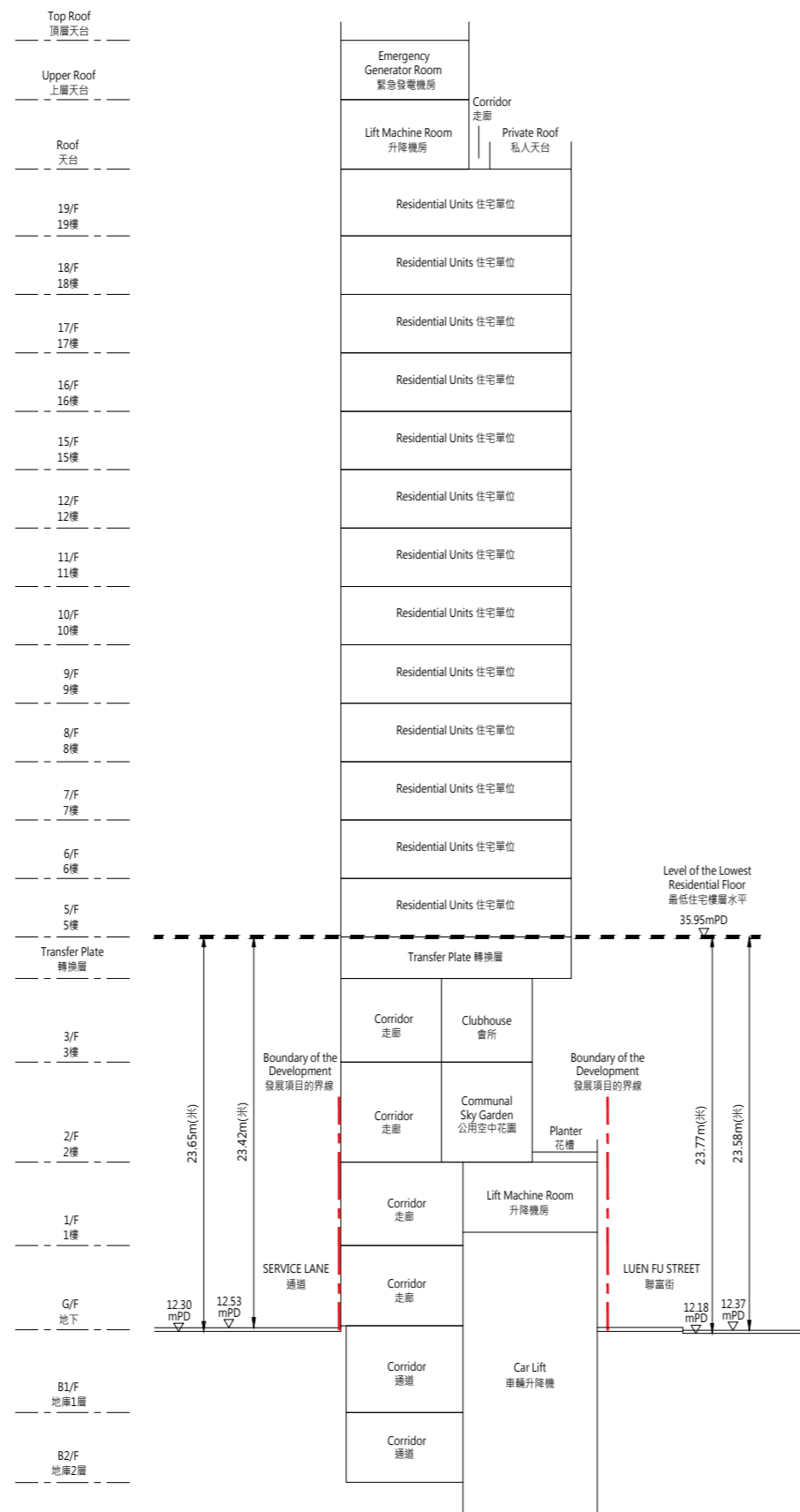


- - - Boundary line of the Development  
發展項目的界線
- - - Dotted line denotes the level of the lowest residential floor.  
虛線為最低住宅樓層水平。
- ▽ Denotes height (in metres) above the Hong Kong Principal Datum (mPD).  
代表香港主水平基準以上的高度(米)。

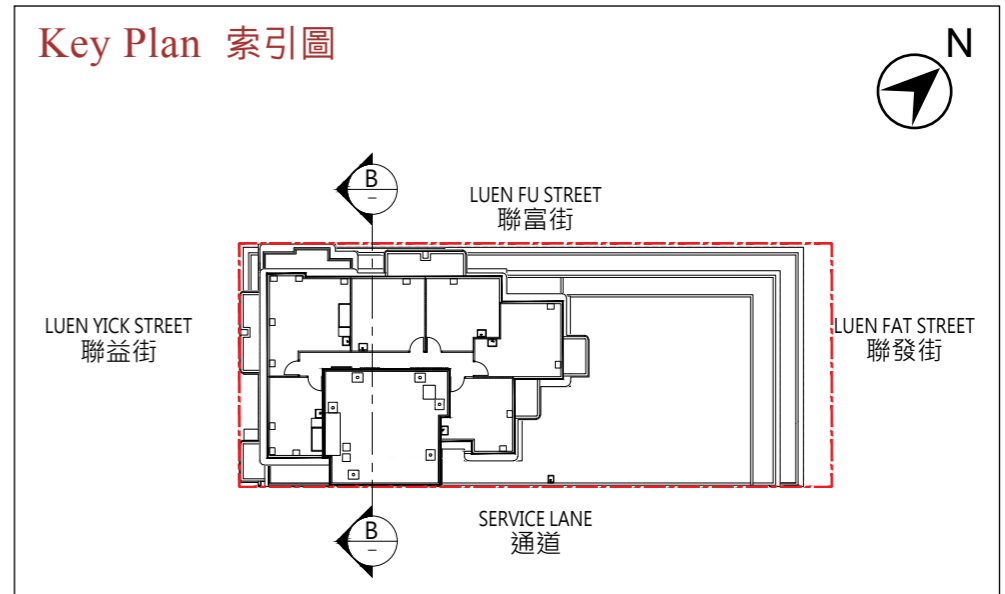
1. The part of Luen Fat Street adjacent to the building is 12.18 metres to 12.28 metres above Hong Kong Principal Datum.  
毗連建築物的一段聯發街為香港主水平基準以上12.18米至12.28米。
2. The part of Luen Yick Street adjacent to the building is 12.37 metres to 12.55 metres above Hong Kong Principal Datum.  
毗連建築物的一段聯益街為香港主水平基準以上12.37米至12.55米。
3. The part of Public Passage Area adjacent to the building is 12.30 metres above Hong Kong Principal Datum.  
毗連建築物的公眾通道區為香港主水平基準以上12.30米。

### CROSS SECTION PLAN B-B

#### 橫截面圖 B-B



### Key Plan 索引圖



- - - Boundary line of the Development  
發展項目的界線
- - - - Dotted line denotes the level of the lowest residential floor.  
虛線為最低住宅樓層水平。
- ▽ Denotes height (in metres) above the Hong Kong Principal Datum (mPD).  
代表香港主水平基準以上的高度(米)。

1. The part of Luen Fu Street adjacent to the building is 12.18 metres to 12.37 metres above Hong Kong Principal Datum.  
毗連建築物的一段聯富街為香港主水平基準以上12.18米至12.37米。
2. The part of service lane adjacent to the building is 12.30 metres to 12.53 metres above Hong Kong Principal Datum.  
毗連建築物的一段通道為香港主水平基準以上12.30米至12.53米。