

Legend of Terms and Abbreviations on Floor Plans: 樓面平面圖中的名稱及簡稱:

AC	= Air-conditioner	= 冷氣機
AC PLINTH	= Air-conditioning Plinth	= 冷氣機台
AD	= Air Duct	= 風槽
AF	= Architectural Feature	= 建築裝飾
AF at 7/F, 9/F, 11/F & 15/F-18/F	= Architectural Feature at 7/F, 9/F, 11/F & 15/F to 18/F	= 於7樓、9樓、11樓及15樓至18樓建築裝飾
AF at +34.300	= Architectural Feature at level +34.300	= 於水平+34.300建築裝飾
AF Above	= Architectural Feature Above	= 上層建築裝飾邊界
BAL	= Balcony	= 露台
BATH	= Bathroom	= 浴室
BR1	= Bedroom 1	= 睡房1
BUILDING LINE ABOVE	= Building Line Above	= 上層建築物邊界
COMMON AREA FOR MAINTENANCE	= Common Area for Maintenance	= 供維修用之公用地方
CORRIDOR	= Corridor	= 通道
COVER for BAL & U.P. Below	= Cover for Balcony and Utility Platform Below	= 下層露台及工作平台的頂部
DAVIT ARM BRACKET	= Davit Arm Bracket	= 吊船吊臂架
DN	= Down	= 下
DOG HOUSE	= Dog House	= 室外管道檢修井
ELV	= Extra-Low Voltage Room	= 特低電壓房

FLAT ROOF	= Flat Roof	= 平台
FLL	= Fireman's Lift Lobby	= 消防員升降機大堂
HR	= Hose Reel	= 消防喉轆
LIFT	= Lift	= 升降機
LIFT MACHINE ROOM	= Lift Machine Room	= 升降機房
LIFT PLATFORM	= Lift Platform	= 升降機平台
LIFT SHAFT VENT	= Lift Shaft Vent	= 升降機槽通風口
LIV/DIN	= Living Room and Dining Room	= 客廳及飯廳
METAL LOUVRE WITH PROTECTIVE SCREEN	= Metal Louvre with Protective Screen	= 金屬百葉連保護屏
MBR	= Master Bedroom	= 主人睡房
METER ROOM	= Electrical Meter Room	= 電錶房
O KIT	= Open Kitchen	= 開放式廚房
PD	= Pipe Duct	= 管道槽
PRIVATE ROOF	= Private Roof	= 私人天台
RSMRR	= Refuse Storage and Material Recovery Room	= 垃圾及物料回收房
UP	= Up	= 上
U.P.	= Utility Platform	= 工作平台
WMC	= Water Meter Cabinet	= 水錶櫃
TOP OF AF	= Top of Architectural Feature	= 建築裝飾的頂部

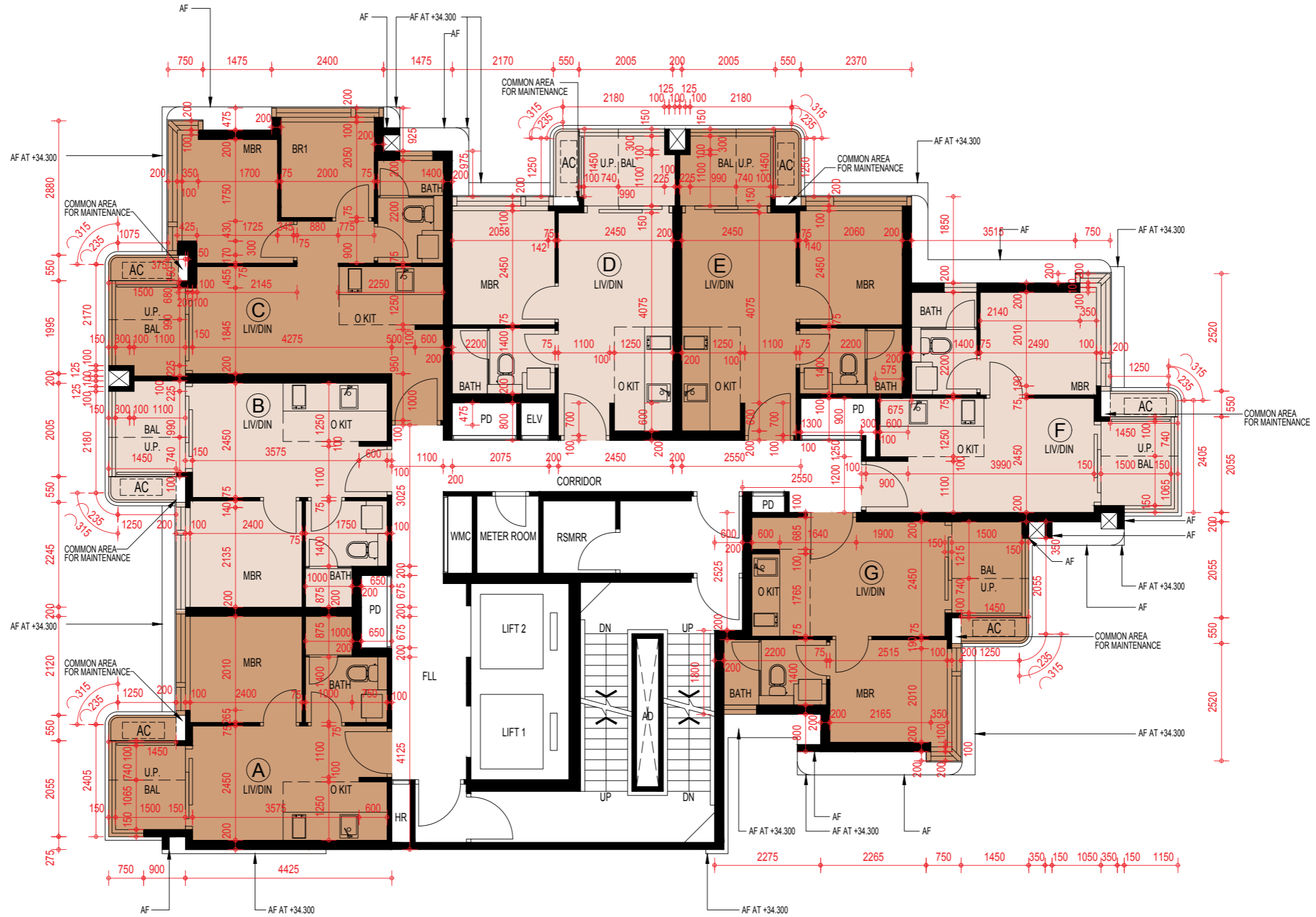
Remarks applicable to floor plans of residential properties in the Development:

- The dimensions of the floor plans are all structural dimensions in millimetre.
- Balconies and utility platforms are non-enclosed areas.
- There may be architectural features and/or exposed pipes on external walls and common flat roof of some floors.
- There may be ceiling bulkheads or suspended ceiling at living room and dining room, bedroom, corridor, bathroom and/or open kitchen of some residential properties for the air-conditioning system and/or conduits and/or Mechanical & Electrical services.
- The indications of fittings such as sinks, water closet and wash basin, etc. shown on the floor plans are indications of their approximate locations only and not indications of their actual size, design or shapes.
- Common drain pipes enclosed in cladding are located adjacent to balconies and utility platforms and/or external wall of some residential properties.

適用於發展項目的住宅物業樓面平面圖之備註：

- 樓面平面圖之尺寸所列數字為以毫米標示之建築結構尺寸。
- 露台及工作平台為不可封閉的地方。
- 部份樓層外牆及公用平台設有建築裝飾及/或外露喉管。
- 部份住宅單位的客廳及飯廳、睡房、走廊、浴室及/或開放式廚房之裝飾橫樑或假天花內裝置空調系統及/或喉管及/或其他機電設備。
- 樓面平面圖上所示之裝置如洗滌盆、坐廁及洗面盆等只供展示其大約位置而非展示其實際大小、設計或形狀。
- 部份住宅物業的露台及工作平台及/或外牆或其鄰近地方覆蓋層板內藏公用水渠。

5/F FLOOR PLAN 5樓樓面平面圖



Scale 比例 : 0 5M (米)

5/F FLOOR PLAN 5樓樓面平面圖

Description of Residential Property 物業的描述	Floor 樓層	Unit 單位						
		A	B	C	D	E	F	G
The thickness of the floor slabs (excluding plaster) of each residential property (mm) 每個住宅物業的樓板 (不包括灰泥) 的厚度 (毫米)	5/F 5樓	150	150	150 175	150	150	150	150 175
The floor-to-floor height of each residential property (mm) 每個住宅物業的層與層之間的高度 (毫米)		3200 3450 3500	3200 3450 3500	3100 3125 3450 3500	3200 3450 3500	3200 3450 3500	3150 3450 3500	3200 3450 3500

The internal areas of the residential properties on the upper floors will generally be slightly larger than those on the lower floors because of the reducing thickness of the structural walls on the upper floors. (Note: This statement required in Section 10(2)(e) in Part 1 of Schedule 1 of the Residential Properties (First-hand Sales) Ordinance (Cap.621) is not applicable to the Development.)

因住宅物業的較高樓層的結構牆的厚度遞減，較高樓層的內部面積，一般比較低樓層的內部面積稍大。
(註：此乃根據《一手住宅物業銷售條例》(第621章)附表1第1部第10(2)(e)條所規定的陳述並不適用於發展項目。)

Notes:

1. Please refer to the first page of the section "Floor Plans of Residential Properties in the Development" of this sales brochure for legend of the terms and abbreviations in studying the floor plans of residential properties in the development.
2. "Floor-to-floor height" refers to the height between the top surface of the structural slab and any mass concrete fill thereon (if any) of a floor and the top surface of the structural slab of its immediate upper floor.
3. 4/F, 13/F & 14/F are omitted.

備註：

1. 請參閱本售樓說明書「發展項目的住宅物業的樓面平面圖」一節首頁之圖例以協助閱讀此部份的發展項目的住宅物業的樓面平面圖及其顯示之名稱和簡稱。
2. "層與層之間的高度"指該樓層之結構地台連其上之混凝土填充層(如有)表面與上一層結構地台面之高度距離。
3. 不設4樓、13樓及14樓。

6/F-12/F, 15/F-18/F FLOOR PLAN 6樓至12樓、15樓至18樓樓面平面圖



Scale 比例 : 0 5M (米)

6/F-12/F, 15/F-18/F FLOOR PLAN 6樓至12樓、15樓至18樓樓面平面圖

Description of Residential Property 物業的描述	Floor 樓層	Unit 單位						
		A	B	C	D	E	F	G
The thickness of the floor slabs (excluding plaster) of each residential property (mm) 每個住宅物業的樓板 (不包括灰泥) 的厚度 (毫米)	6/F-12/F, 15/F-17/F 6樓至12樓、 15樓至17樓	150	150	150 175	150	150	150	150 175
	18/F 18樓	150 175	150	150 175	150	150	150	150 175
The floor-to-floor height of each residential property (mm) 每個住宅物業的層與層之間的高度 (毫米)	6/F-12/F, 15/F-17/F 6樓至12樓、 15樓至17樓	3200 3450 3500	3200 3450 3500	3100 3125 3450 3500	3200 3450 3500	3200 3450 3500	3150 3450 3500	3200 3450 3500
	18/F 18樓	3150 3200 3500	3150 3450 3500	3150 3200 3500	3200 3450 3500	3200 3450 3500	3150 3450 3500	3200 3450 3500

The internal areas of the residential properties on the upper floors will generally be slightly larger than those on the lower floors because of the reducing thickness of the structural walls on the upper floors. (Note: This statement required in Section 10(2)(e) in Part 1 of Schedule 1 of the Residential Properties (First-hand Sales) Ordinance (Cap.621) is not applicable to the Development.)

因住宅物業的較高樓層的結構牆的厚度遞減，較高樓層的內部面積，一般比較低樓層的內部面積稍大。
(註：此乃根據《一手住宅物業銷售條例》(第621章)附表1第1部第10(2)(e)條所規定的陳述並不適用於發展項目。)

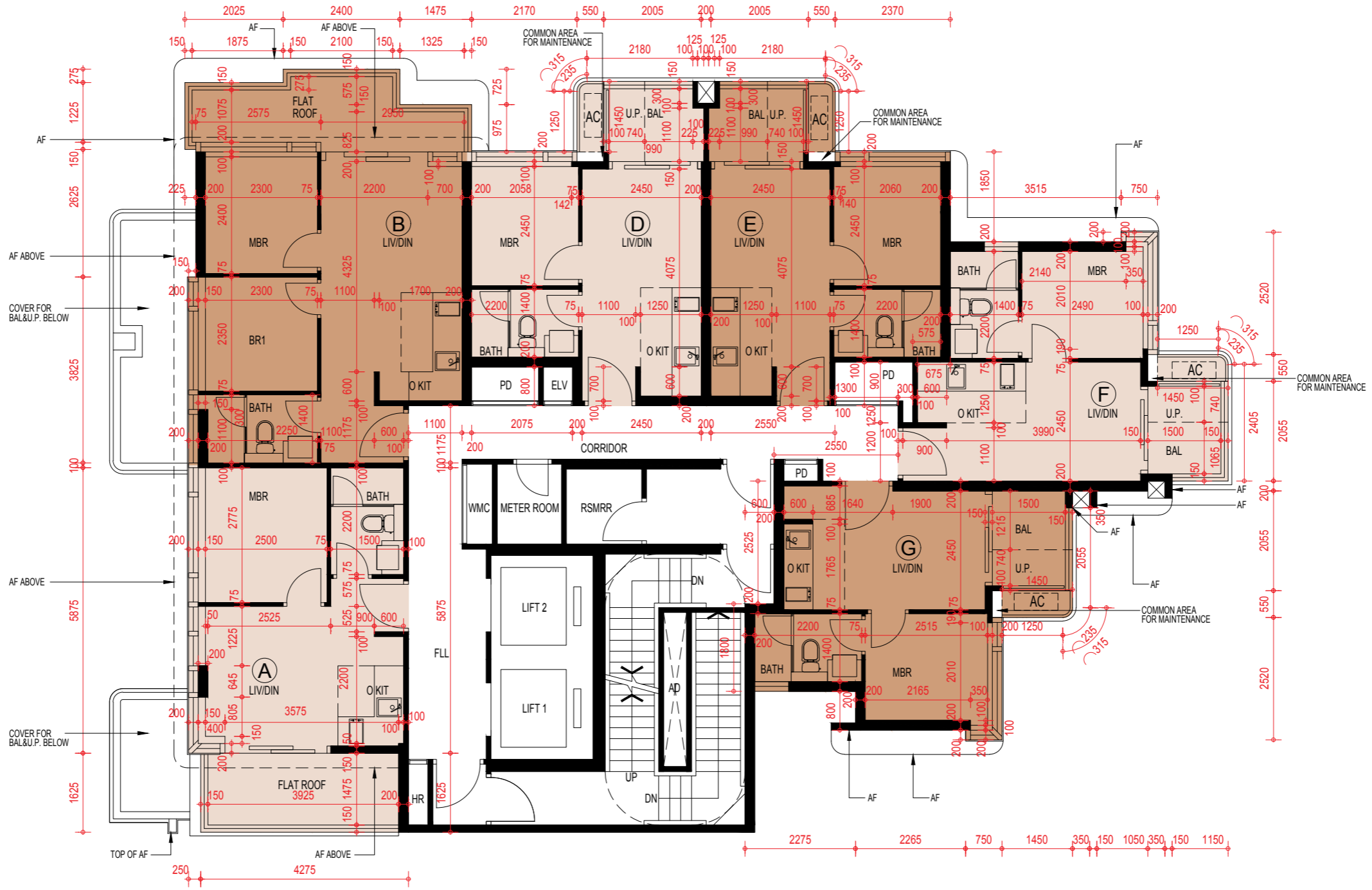
Notes:

- Please refer to the first page of the section "Floor Plans of Residential Properties in the Development" of this sales brochure for legend of the terms and abbreviations in studying the floor plans of residential properties in the development.
- "Floor-to-floor height" refers to the height between the top surface of the structural slab and any mass concrete fill thereon (if any) of a floor and the top surface of the structural slab of its immediate upper floor.
- 4/F, 13/F & 14/F are omitted.

備註：

- 請參閱本售樓說明書「發展項目的住宅物業的樓面平面圖」一節首頁之圖例以協助閱讀此部份的發展項目的住宅物業的樓面平面圖及其顯示之名稱和簡稱。
- "層與層之間的高度"指該樓層之結構地台連其上之混凝土填充層(如有)表面與上一層結構地台面之高度距離。
- 不設4樓、13樓及14樓。

19/F FLOOR PLAN 19樓樓面平面圖



Scale 比例 : 0 5M (米)

19/F FLOOR PLAN 19樓樓面平面圖

Description of Residential Property 物業的描述	Floor 樓層	Unit 單位					
		A	B	D	E	F	G
The thickness of the floor slabs (excluding plaster) of each residential property (mm) 每個住宅物業的樓板 (不包括灰泥) 的厚度 (毫米)	19/F 19樓	200	200	150 175	150 175	150 175	150 175
The floor-to-floor height of each residential property (mm) 每個住宅物業的層與層之間的高度 (毫米)		3625 4000	3625 4000	4000	4000	4000	3650 4000

The internal areas of the residential properties on the upper floors will generally be slightly larger than those on the lower floors because of the reducing thickness of the structural walls on the upper floors. (Note: This statement required in Section 10(2)(e) in Part 1 of Schedule 1 of the Residential Properties (First-hand Sales) Ordinance (Cap.621) is not applicable to the Development.)

因住宅物業的較高樓層的結構牆的厚度遞減，較高樓層的內部面積，一般比較低樓層的內部面積稍大。
(註：此乃根據《一手住宅物業銷售條例》(第621章)附表1第1部第10(2)(e)條所規定的陳述並不適用於發展項目。)

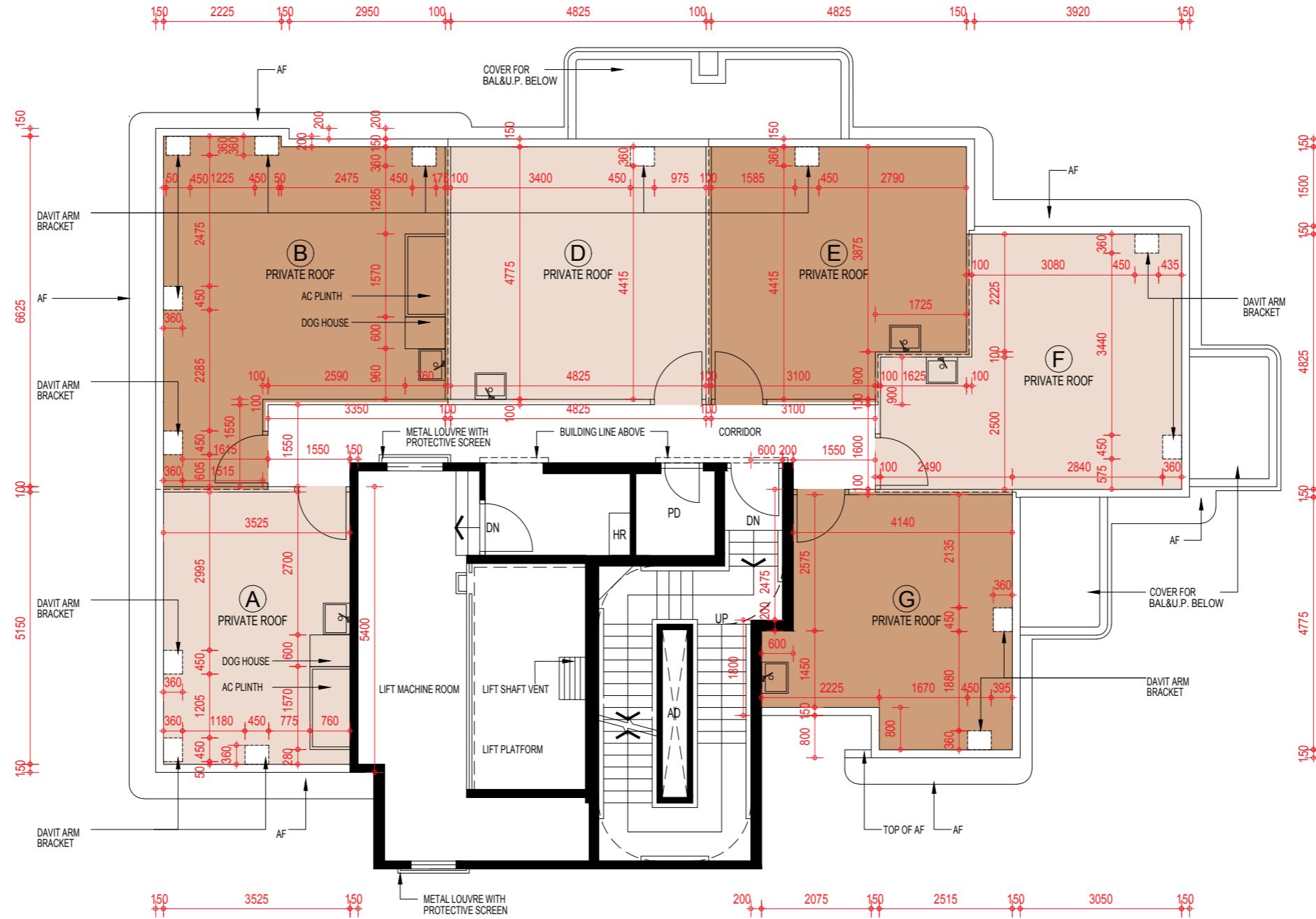
Notes:

1. Please refer to the first page of the section "Floor Plans of Residential Properties in the Development" of this sales brochure for legend of the terms and abbreviations in studying the floor plans of residential properties in the development.
2. "Floor-to-floor height" refers to the height between the top surface of the structural slab and any mass concrete fill thereon (if any) of a floor and the top surface of the structural slab of its immediate upper floor.
3. 4/F, 13/F & 14/F are omitted.

備註：

1. 請參閱本售樓說明書「發展項目的住宅物業的樓面平面圖」一節首頁之圖例以協助閱讀此部份的發展項目的住宅物業的樓面平面圖及其顯示之名稱和簡稱。
2. "層與層之間的高度"指該樓層之結構地台連其上之混凝土填充層(如有)表面與上一層結構地台面之高度距離。
3. 不設4樓、13樓及14樓。

ROOF FLOOR PLAN 天台平面圖



Scale 比例 : 0 5M (米)

ROOF FLOOR PLAN 天台平面圖

Description of Residential Property 物業的描述	Floor 樓層	Unit 單位					
		A	B	D	E	F	G
The thickness of the floor slabs (excluding plaster) of each residential property (mm) 每個住宅物業的樓板 (不包括灰泥) 的厚度 (毫米)	Roof 天台	Not Applicable 不適用					
The floor-to-floor height of each residential property (mm) 每個住宅物業的層與層之間的高度 (毫米)							

The internal areas of the residential properties on the upper floors will generally be slightly larger than those on the lower floors because of the reducing thickness of the structural walls on the upper floors. (Note: This statement required in Section 10(2)(e) in Part 1 of Schedule 1 of the Residential Properties (First-hand Sales) Ordinance (Cap.621) is not applicable to the Development.)

因住宅物業的較高樓層的結構牆的厚度遞減，較高樓層的內部面積，一般比較低樓層的內部面積稍大。
(註：此乃根據《一手住宅物業銷售條例》(第621章)附表1第1部第10(2)(e)條所規定的陳述並不適用於發展項目。)

Notes:

- Please refer to the first page of the section "Floor Plans of Residential Properties in the Development" of this sales brochure for legend of the terms and abbreviations in studying the floor plans of residential properties in the development.
- "Floor-to-floor height" refers to the height between the top surface of the structural slab and any mass concrete fill thereon (if any) of a floor and the top surface of the structural slab of its immediate upper floor.

備註：

- 請參閱本售樓說明書「發展項目的住宅物業的樓面平面圖」一節首頁之圖例以協助閱讀此部份的發展項目的住宅物業的樓面平面圖及其顯示之名稱和簡稱。
- "層與層之間的高度"指該樓層之結構地台連其上之混凝土填充層(如有)表面與上一層結構地台面之高度距離。