

# FLOOR PLANS OF RESIDENTIAL PROPERTIES IN THE DEVELOPMENT

## 發展項目的住宅物業的樓面平面圖

### Legend of terms and abbreviations used on the floor plans 樓面平面圖中所使用名詞及簡稱之圖例

ACOUSTIC WALL	=	隔音牆
ACP.	=	AIR-CONDITIONER PLATFORM = 空調機平台
A.D.	=	AIR DUCT = 通風槽
A.F.	=	ARCHITECTURAL FEATURE = 建築裝飾
A.W.	=	ACOUSTIC WINDOW = 隔音窗
BAL. & U.P.	=	BALCONY AND UTILITY PLATFORM = 露台及工作平台
BAL. & U.P. LINE ABOVE	=	BALCONY AND UTILITY PLATFORM = 上層露台及工作平台線 LINE ABOVE
BATH	=	BATHROOM = 浴室
BED RM.	=	BEDROOM = 睡房
BED RM. 1	=	BEDROOM 1 = 睡房1
BED RM. 2	=	BEDROOM 2 = 睡房2
COMMON AREA	=	公用地方
COMMON FLAT ROOF	=	公用平台
COMMON FLAT ROOF (INACCESSIBLE)	=	公用平台 (不可通達)
COMMON FLAT ROOF REFUGE AREA	=	公用平台庇護地方
DESIGNATED PLACE FOR INSTALLATION OF AIR-CONDITIONING UNITS FOR B3 AT 5/F	=	DESIGNATED PLACE FOR INSTALLATION OF AIR-CONDITIONING UNITS FOR UNIT B3 AT 5/F = 指定地方以供安裝5樓B3單位空調機
DN	=	DOWN = 落
E.M.C.	=	ELECTRIC METER CABINET = 電錶櫃
E.M.R.	=	ELECTRIC METER ROOM = 電錶房
EMERGENCY GENERATOR RM.	=	EMERGENCY GENERATOR ROOM = 緊急發電機機房
EL.	=	ELECTRICAL PIPE DUCT = 電線槽
EL. RM.	=	ELECTRICAL ROOM = 電房
ELV.	=	EXTRA LOW VOLTAGE = 特低壓電線槽
ELV. RM.	=	EXTRA LOW VOLTAGE ROOM = 特低壓電房
FLAT ROOF	=	平台
FLUSHING & POTABLE WATER PUMP & TANK RM. 4	=	FLUSHING & POTABLE WATER PUMP & TANK ROOM 4 = 沖廁水及食水泵及缸4號房
FLUSHING & POTABLE WATER PUMP & TANK RM. 5	=	FLUSHING & POTABLE WATER PUMP & TANK ROOM 5 = 沖廁水及食水泵及缸5號房
F.S.P.D.	=	FIRE SERVICE PIPE DUCT = 消防管槽
LIFT	=	升降機
LIFT LOBBY	=	升降機大堂
LIFT SHAFT	=	升降機槽

LIV. & DIN.	=	LIVING ROOM AND DINING ROOM = 客廳及飯廳
M. BATH	=	MASTER BATHROOM = 主人浴室
M. BED RM.	=	MASTER BEDROOM = 主人睡房
M.W.	=	MAINTENANCE WINDOW = 維修用窗
OPEN KIT.	=	OPEN KITCHEN = 開放式廚房
P.D.	=	PIPE DUCT = 管道槽
POTABLE WATER PUMP RM.	=	POTABLE WATER PUMP ROOM = 食水水泵房
PLANTER	=	花槽
RAMP UP	=	斜坡向上
RC COVER OF BALCONY AND UTILITY PLATFORM AND A.C. PLATFORM	=	REINFORCED CONCRETE COVER OF BALCONY AND UTILITY PLATFORM AND AIR-CONDITIONER PLATFORM = 露台及工作平台及空調機平台的混凝土蓋板
R.C. ENCLOSURE FOR M/E SERVICES	=	REINFORCED CONCRETE ENCLOSURE FOR MECHANICAL AND ELECTRICAL SERVICES = 機電設備的混凝土圍封
ROOF	=	天台
R.S.M.R.R.	=	REFUSE STORAGE AND MATERIAL RECOVERY ROOM = 垃圾及物料回收室
ST	=	STORE = 儲物室
T.R.S.	=	TEMPORARY REFUGE SPACE = 臨時庇護處
TOWER 1	=	第1座
TOWER 2	=	第2座
TOWER 3	=	第3座
UP	=	上
W.M.C	=	WATER METER CABINET = 水錶櫃
	=	AIR-CONDITIONER (OUTDOOR UNIT) = 空調機(室外機)
	=	MAINTENANCE AREA (DESIGNATED COMMON AREA FOR MAINTENANCE UNDER PNAP APP-93 AND DESIGNATED AS COMMON AREA UNDER DEED OF MUTUAL COVENANT AND MANAGEMENT AGREEMENT) = 維修用的範圍 (根據《作業備考》APP-93訂明為維修用之公用地方和公契及管理協議訂明為公用地方的範圍)
 / H.R.	=	HOSE REEL = 喉轆
	=	SINK / BASIN = 洗滌盆/洗手盆
	=	STOVE = 煮食爐

# FLOOR PLANS OF RESIDENTIAL PROPERTIES IN THE DEVELOPMENT

## 發展項目的住宅物業的樓面平面圖

---

### Remarks:

1. There may be architectural features and/or exposed pipes on external walls of some floors.
2. Common pipes exposed and/or enclosed in cladding are located at/adjacent to balcony and/or flat roof and/or utility platform and/or air-conditioner platform and/or external wall of some residential units.
3. There are ceiling bulkheads or false ceiling at living room, dining room, bedrooms, master bedroom, bathroom, master bathroom, store, open kitchen of some residential units for the air-conditioning system and/or mechanical and electrical services. There are sunken slabs for mechanical and electrical services of residential units above at some residential units.
4. The ceiling height within some residential units may vary due to the needs of structural, architectural and/or decoration design.
5. Symbols of fittings and fitments shown on the floor plans, such as bathtubs, sink, water closets, sink counter, etc. are retrieved from the latest approved building plans and are for general indication only.
6. There are exposed pipes mounted at part of flat roof and roof of each tower in the Development. Only part of the exposed pipes are covered by aluminium cladding.
7. For some residential units, the air-conditioner platform(s) outside a residential unit will be placed with air-conditioner (outdoor unit(s)) belonging to the residential unit. The placement of these air-conditioner unit(s) may emit heat and/or sound.
8. Balconies and utility platforms are non-enclosed areas.
9. During the necessary maintenance of the external walls by manager of the Development, the gondola will be operating in the airspace outside window of residential units and above flat roof / roof in such towers.
10. There are non-structural prefabricated external walls in the residential units. The saleable area of a residential unit has included the non-structural prefabricated external walls and is measured from the exterior of the enclosing walls of the residential unit.

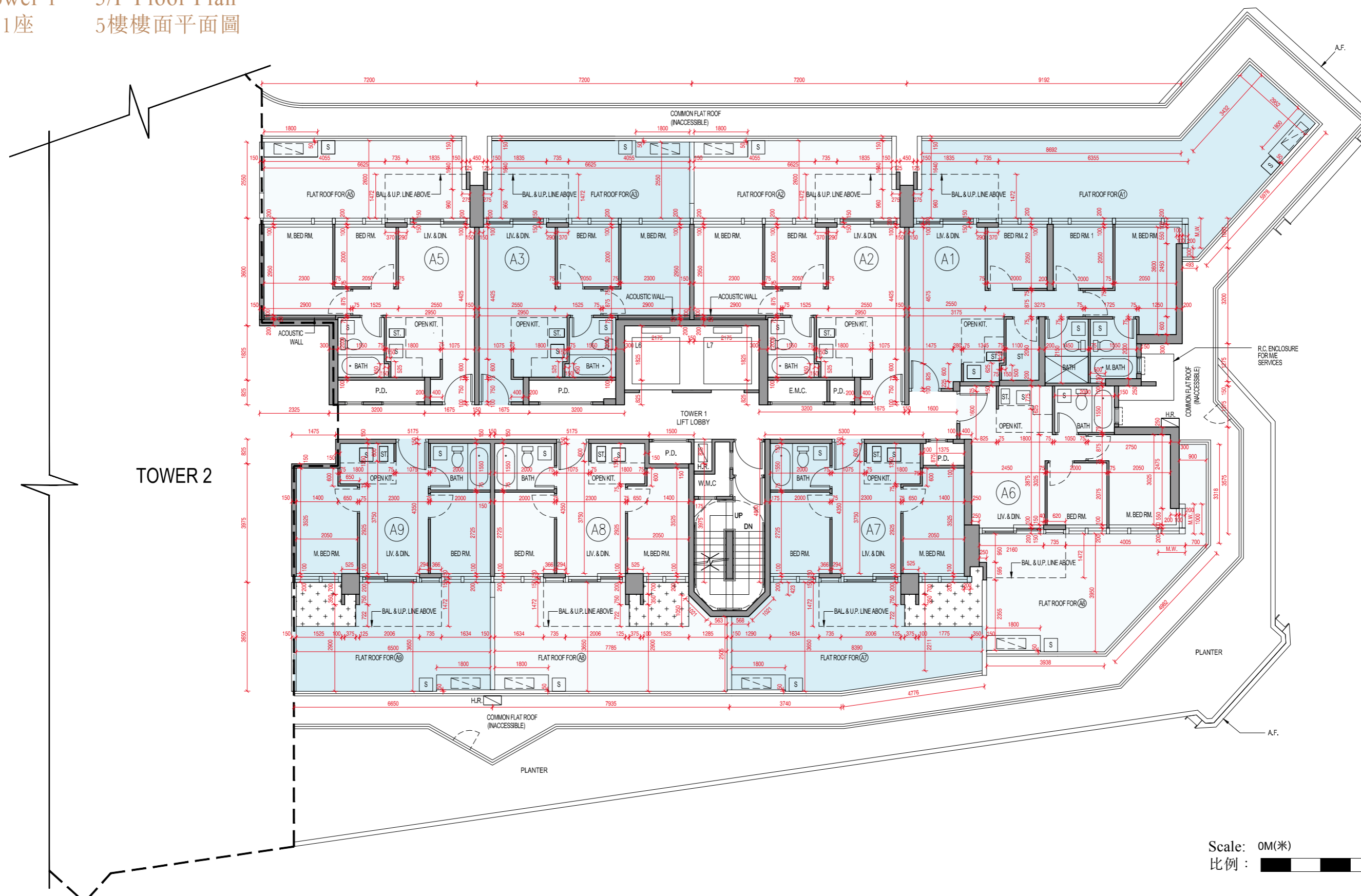
### 備註：

1. 部份樓層外牆可能設有建築裝飾及/或外露喉管。
2. 部份住宅單位的露台及/或平台及/或工作平台及/或空調機平台及/或外牆或其鄰近地方設有外露及/或內藏於覆蓋層板的公用喉管。
3. 部份住宅單位客廳、飯廳、睡房、主人睡房、浴室、主人浴室、儲物室、開放式廚房有裝飾橫樑或假天花，用以裝置空調系統及/或機電設備。部分住宅單位天花板有跌級樓板，用以安裝樓上住宅單位之機電設備。
4. 部份住宅單位之天花板高度將會因應結構、建築及/或裝修設計上的需要而有差異。
5. 樓面平面圖上所顯示的形象裝置符號，例如浴缸、洗滌盆、坐廁、洗滌盆櫃等乃擷取自最新的經批准的建築圖則，只作一般性標誌。
6. 發展項目內的每座大廈的部分平台及天台上裝設有外露喉管，只有部份外露喉管被鋁質覆蓋層板所覆蓋。
7. 部份住宅單位外的空調機平台將會放置其住宅單位的一部或多部空調機(室外機)。該等空調機的位置可能發出熱力及/或聲音。
8. 露台及工作平台為不可封閉的地方。
9. 在發展項目管理人安排外牆之必要維修進行期間，吊船將在該等大廈的住宅單位之窗戶外及平台/天台上之空間運作。
10. 住宅單位有非結構預製外牆。住宅單位的實用面積包括非結構預製外牆，並由圍封住宅單位的圍封牆之外圍起計。

# FLOOR PLANS OF RESIDENTIAL PROPERTIES IN THE DEVELOPMENT

## 發展項目的住宅物業的樓面平面圖

Tower 1 5/F Floor Plan  
第1座 5樓樓面平面圖



# FLOOR PLANS OF RESIDENTIAL PROPERTIES IN THE DEVELOPMENT

## 發展項目的住宅物業的樓面平面圖

### Tower 1 5/F Floor Plan 第1座 5樓樓面平面圖

	Tower 座數	Unit 單位		A1	A2	A3	A5	A6	A7	A8	A9
		Floor 樓層									
The thickness of the floor slabs (excluding plaster) of each residential property (mm) 每個住宅物業的樓板(不包括灰泥)的厚度(毫米)	Tower 1 第1座	5/F 5樓		150	150	150	150	150	150	150	150
The floor-to-floor height of each residential property (mm) 每個住宅物業的層與層之間的高度(毫米)				3500 3850	3500	3500	3500	3500 3850	3500 3850	3500 3850	3500 3850

The internal areas of the residential properties on the upper floors will generally be slightly larger than those on the lower floors because of the reducing thickness of the structural walls on the upper floors. (Note: This statement required under Section 10(2)(e) in Part 1 of Schedule 1 of the Residential Properties (First-hand Sales) Ordinance (Cap.621) is not applicable to the Development.)

因住宅物業的較高樓層的結構牆的厚度遞減，較高樓層的內部面積，一般比較低樓層的內部面積稍大。(註：此根據《一手住宅物業銷售條例》(第621章)附表1第1部第10(2)(e)條所規定的陳述並不適用於發展項目。)

#### Notes:

- The dimensions in the floor plans are all structural dimensions in millimetre.
- 4/F, 13/F, 14/F, 24/F and 34/F are omitted.
- R/F is refuge roof.
- Please refer to pages 22 and 23 of this sales brochure for remarks and legend of terms and abbreviations in studying the floor plans of residential properties in the Development.

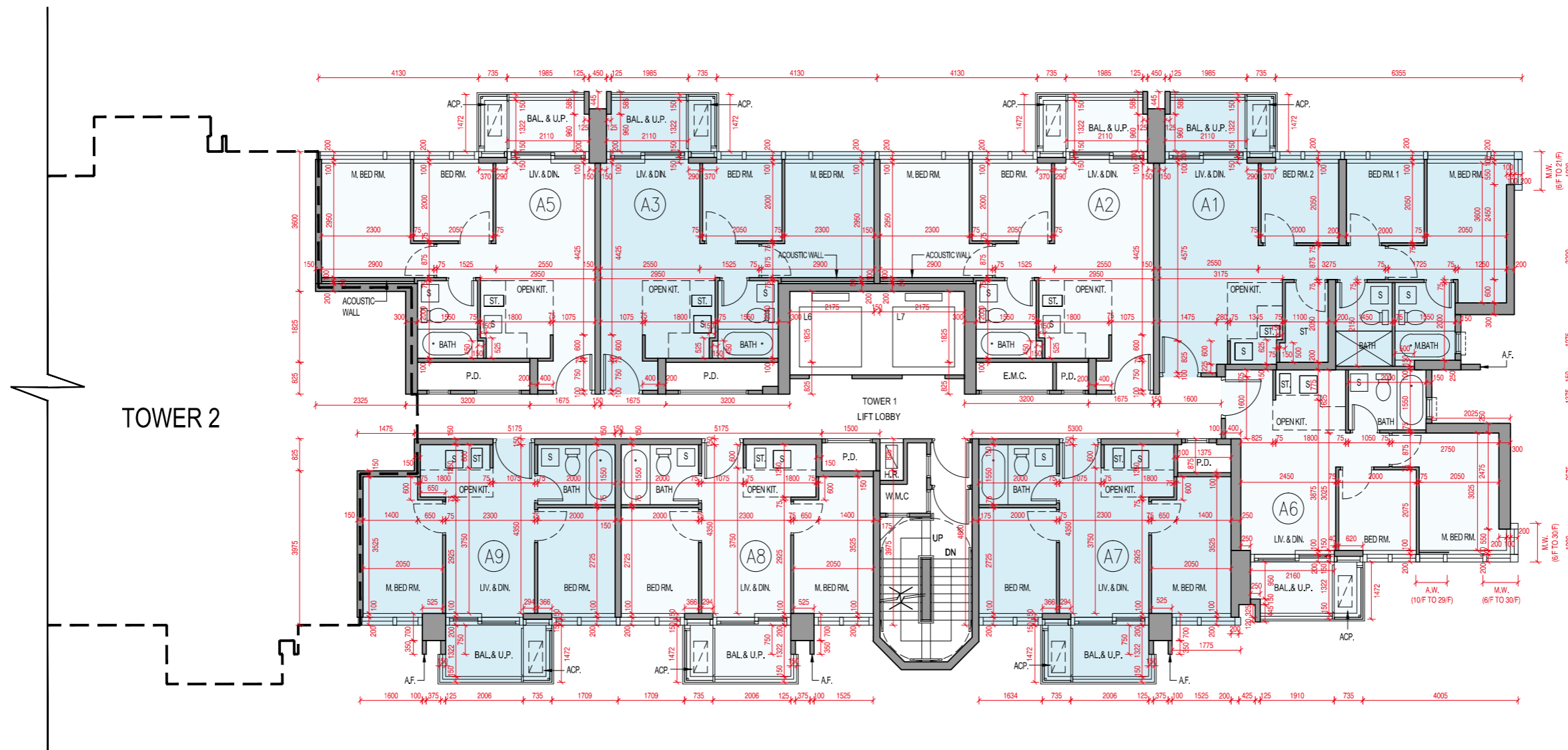
#### 備註：

- 樓面平面圖所列之尺寸為以毫米標示之建築結構尺寸。
- 不設4樓、13樓、14樓、24樓及34樓。
- 天台層為庇護天台。
- 請參閱本售樓說明書第22及23頁的備註以及名詞及簡稱之圖例以協助閱讀發展項目的住宅物業的樓面平面圖。

# FLOOR PLANS OF RESIDENTIAL PROPERTIES IN THE DEVELOPMENT

## 發展項目的住宅物業的樓面平面圖

Tower 1 6/F-12/F, 15/F-23/F, 25/F-33/F & 35/F-42/F Floor Plan  
 第1座 6樓至12樓、15樓至23樓、25樓至33樓及35樓至42樓樓面平面圖



Scale: 0M(米) 5M(米)  
 比例:

# FLOOR PLANS OF RESIDENTIAL PROPERTIES IN THE DEVELOPMENT

## 發展項目的住宅物業的樓面平面圖

Tower 1 6/F-12/F, 15/F-23/F, 25/F-33/F & 35/F-42/F Floor Plan  
 第1座 6樓至12樓、15樓至23樓、25樓至33樓及35樓至42樓樓面平面圖

	Tower 座數	Unit 單位		A1	A2	A3	A5	A6	A7	A8	A9
		Floor 樓層									
The thickness of the floor slabs (excluding plaster) of each residential property (mm) 每個住宅物業的樓板(不包括灰泥)的厚度(毫米)	Tower 1 第1座	6/F-12/F, 15/F-23/F, 25/F-33/F & 35/F-41/F 6樓至12樓、 15樓至23樓、 25樓至33樓及 35樓至41樓		150	150	150	150	150	150	150	150
The floor-to-floor height of each residential property (mm) 每個住宅物業的層與層之間的高度(毫米)				3300	3300	3300	3300	3300	3300	3300	3300
The thickness of the floor slabs (excluding plaster) of each residential property (mm) 每個住宅物業的樓板(不包括灰泥)的厚度(毫米)		42/F 42樓		200	200	200	200	200	200	200	200
The floor-to-floor height of each residential property (mm) 每個住宅物業的層與層之間的高度(毫米)				3475 3500 3850 4925	3475 3500 3850 4925	3475 3500 3850	3475 3500 3850	3475 3500 3850	3475 3500 3850	3475 3500 3850	

The internal areas of the residential properties on the upper floors will generally be slightly larger than those on the lower floors because of the reducing thickness of the structural walls on the upper floors. (Note: This statement required under Section 10(2)(e) in Part 1 of Schedule 1 of the Residential Properties (First-hand Sales) Ordinance (Cap.621) is not applicable to the Development.)

因住宅物業的較高樓層的結構牆的厚度遞減，較高樓層的內部面積，一般比較低樓層的內部面積稍大。(註：此根據《一手住宅物業銷售條例》(第621章)附表1第1部第10(2)(e)條所規定的陳述並不適用於發展項目。)

### Notes:

1. The dimensions in the floor plans are all structural dimensions in millimetre.
2. 4/F, 13/F, 14/F, 24/F and 34/F are omitted.
3. R/F is refuge roof.
4. Please refer to pages 22 and 23 of this sales brochure for remarks and legend of terms and abbreviations in studying the floor plans of residential properties in the Development.

### 備註：

1. 樓面平面圖所列之尺寸為以毫米標示之建築結構尺寸。
2. 不設4樓、13樓、14樓、24樓及34樓。
3. 天台層為庇護天台。
4. 請參閱本售樓說明書第22及23頁的備註以及名詞及簡稱之圖例以協助閱讀發展項目的住宅物業的樓面平面圖。



## FLOOR PLANS OF RESIDENTIAL PROPERTIES IN THE DEVELOPMENT

### 發展項目的住宅物業的樓面平面圖

#### Tower 1 Roof Floor Plan 第1座 天台樓面平面圖

	Tower 座數	Unit 單位		
		Floor 樓層		
The thickness of the floor slabs (excluding plaster) of each residential property (mm) 每個住宅物業的樓板(不包括灰泥)的厚度(毫米)	Tower 1 第1座	Roof 天台	A1	A2
The floor-to-floor height of each residential property (mm) 每個住宅物業的層與層之間的高度(毫米)			Not Applicable 不適用	
			Not Applicable 不適用	

The internal areas of the residential properties on the upper floors will generally be slightly larger than those on the lower floors because of the reducing thickness of the structural walls on the upper floors. (Note: This statement required under Section 10(2)(e) in Part 1 of Schedule 1 of the Residential Properties (First-hand Sales) Ordinance (Cap.621) is not applicable to the Development.)

因住宅物業的較高樓層的結構牆的厚度遞減，較高樓層的內部面積，一般比較低樓層的內部面積稍大。(註：此根據《一手住宅物業銷售條例》(第621章)附表1第1部第10(2)(e)條所規定的陳述並不適用於發展項目。)

#### Notes:

- The dimensions in the floor plans are all structural dimensions in millimetre.
- 4/F, 13/F, 14/F, 24/F and 34/F are omitted.
- R/F is refuge roof.
- Please refer to pages 22 and 23 of this sales brochure for remarks and legend of terms and abbreviations in studying the floor plans of residential properties in the Development.

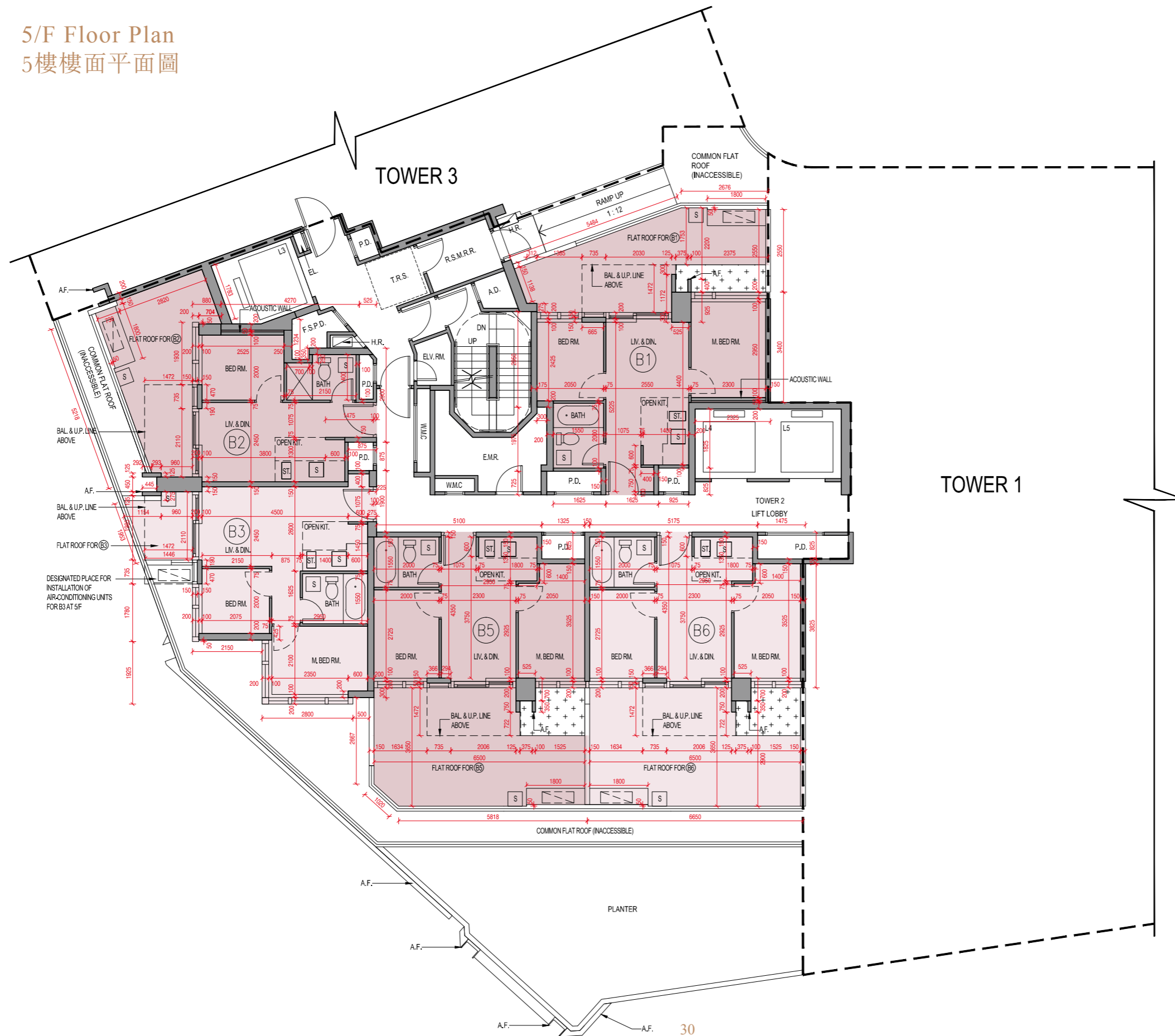
#### 備註：

- 樓面平面圖所列之尺寸為以毫米標示之建築結構尺寸。
- 不設4樓、13樓、14樓、24樓及34樓。
- 天台層為庇護天台。
- 請參閱本售樓說明書第22及23頁的備註以及名詞及簡稱之圖例以協助閱讀發展項目的住宅物業的樓面平面圖。

# FLOOR PLANS OF RESIDENTIAL PROPERTIES IN THE DEVELOPMENT

## 發展項目的住宅物業的樓面平面圖

Tower 2 5/F Floor Plan  
第2座 5樓樓面平面圖



Scale: 0M(米) 5M(米)  
比例:

# FLOOR PLANS OF RESIDENTIAL PROPERTIES IN THE DEVELOPMENT

## 發展項目的住宅物業的樓面平面圖

### Tower 2 5/F Floor Plan 第2座 5樓樓面平面圖

	Tower 座數	Unit 單位		B1	B2	B3	B5	B6
		Floor 樓層						
The thickness of the floor slabs (excluding plaster) of each residential property (mm) 每個住宅物業的樓板(不包括灰泥)的厚度(毫米)	Tower 2 第2座	5/F 5樓		150	150	150	150	150
The floor-to-floor height of each residential property (mm) 每個住宅物業的層與層之間的高度(毫米)				3500	3500 3850	3500 3850	3500 3850	3500

The internal areas of the residential properties on the upper floors will generally be slightly larger than those on the lower floors because of the reducing thickness of the structural walls on the upper floors. (Note: This statement required under Section 10(2)(e) in Part 1 of Schedule 1 of the Residential Properties (First-hand Sales) Ordinance (Cap.621) is not applicable to the Development.)

因住宅物業的較高樓層的結構牆的厚度遞減，較高樓層的內部面積，一般比較低樓層的內部面積稍大。(註：此根據《一手住宅物業銷售條例》(第621章)附表1第1部第10(2)(e)條所規定的陳述並不適用於發展項目。)

#### Notes:

1. The dimensions in the floor plans are all structural dimensions in millimetre.
2. 4/F, 13/F, 14/F, 24/F and 34/F are omitted.
3. R/F is refuge roof.
4. Please refer to pages 22 and 23 of this sales brochure for remarks and legend of terms and abbreviations in studying the floor plans of residential properties in the Development.

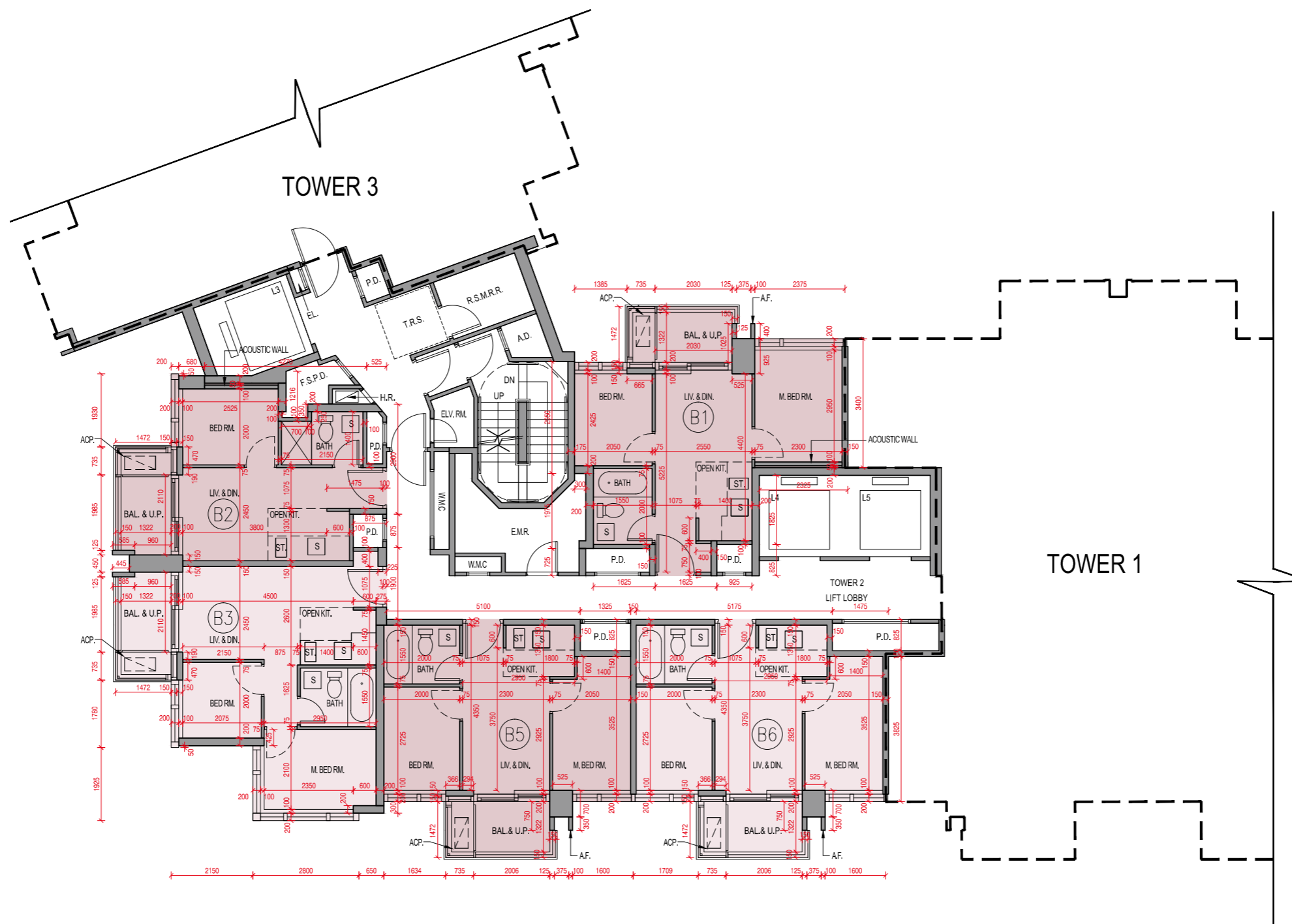
#### 備註：

1. 樓面平面圖所列之尺寸為以毫米標示之建築結構尺寸。
2. 不設4樓、13樓、14樓、24樓及34樓。
3. 天台層為庇護天台。
4. 請參閱本售樓說明書第22及23頁的備註以及名詞及簡稱之圖例以協助閱讀發展項目的住宅物業的樓面平面圖。

# FLOOR PLANS OF RESIDENTIAL PROPERTIES IN THE DEVELOPMENT

## 發展項目的住宅物業的樓面平面圖

Tower 2 第2座 6/F-12/F, 15/F-23/F, 25/F-33/F & 35/F-42/F Floor Plan  
 6樓至12樓、15樓至23樓、25樓至33樓及35樓至42樓樓面平面圖



Scale: 0M(米) 5M(米)  
 比例:

## FLOOR PLANS OF RESIDENTIAL PROPERTIES IN THE DEVELOPMENT

### 發展項目的住宅物業的樓面平面圖

Tower 2 6/F-12/F, 15/F-23/F, 25/F-33/F & 35/F-42/F Floor Plan  
第2座 6樓至12樓、15樓至23樓、25樓至33樓及35樓至42樓樓面平面圖

	Tower 座數	Unit 單位	B1	B2	B3	B5	B6
		Floor 樓層					
The thickness of the floor slabs (excluding plaster) of each residential property (mm) 每個住宅物業的樓板(不包括灰泥)的厚度(毫米)	Tower 2 第2座	6/F-12/F, 15/F-23/F, 25/F-33/F & 35/F-41/F 6樓至12樓、 15樓至23樓、 25樓至33樓及 35樓至41樓	150	150	150	150	150
The floor-to-floor height of each residential property (mm) 每個住宅物業的層與層之間的高度(毫米)			3300	3300	3300	3300	3300
The thickness of the floor slabs (excluding plaster) of each residential property (mm) 每個住宅物業的樓板(不包括灰泥)的厚度(毫米)			200	200	200	200	200
The floor-to-floor height of each residential property (mm) 每個住宅物業的層與層之間的高度(毫米)		42/F 42樓	3475 3500 3850	3475 3500 3850	3475 3500 3850	3475 3500 3850	3475 3500 3850

The internal areas of the residential properties on the upper floors will generally be slightly larger than those on the lower floors because of the reducing thickness of the structural walls on the upper floors. (Note: This statement required under Section 10(2)(e) in Part 1 of Schedule 1 of the Residential Properties (First-hand Sales) Ordinance (Cap.621) is not applicable to the Development.)

因住宅物業的較高樓層的結構牆的厚度遞減，較高樓層的內部面積，一般比較低樓層的內部面積稍大。(註：此根據《一手住宅物業銷售條例》(第621章)附表1第1部第10(2)(e)條所規定的陳述並不適用於發展項目。)

#### Notes:

- The dimensions in the floor plans are all structural dimensions in millimetre.
- 4/F, 13/F, 14/F, 24/F and 34/F are omitted.
- R/F is refuge roof.
- Please refer to pages 22 and 23 of this sales brochure for remarks and legend of terms and abbreviations in studying the floor plans of residential properties in the Development.

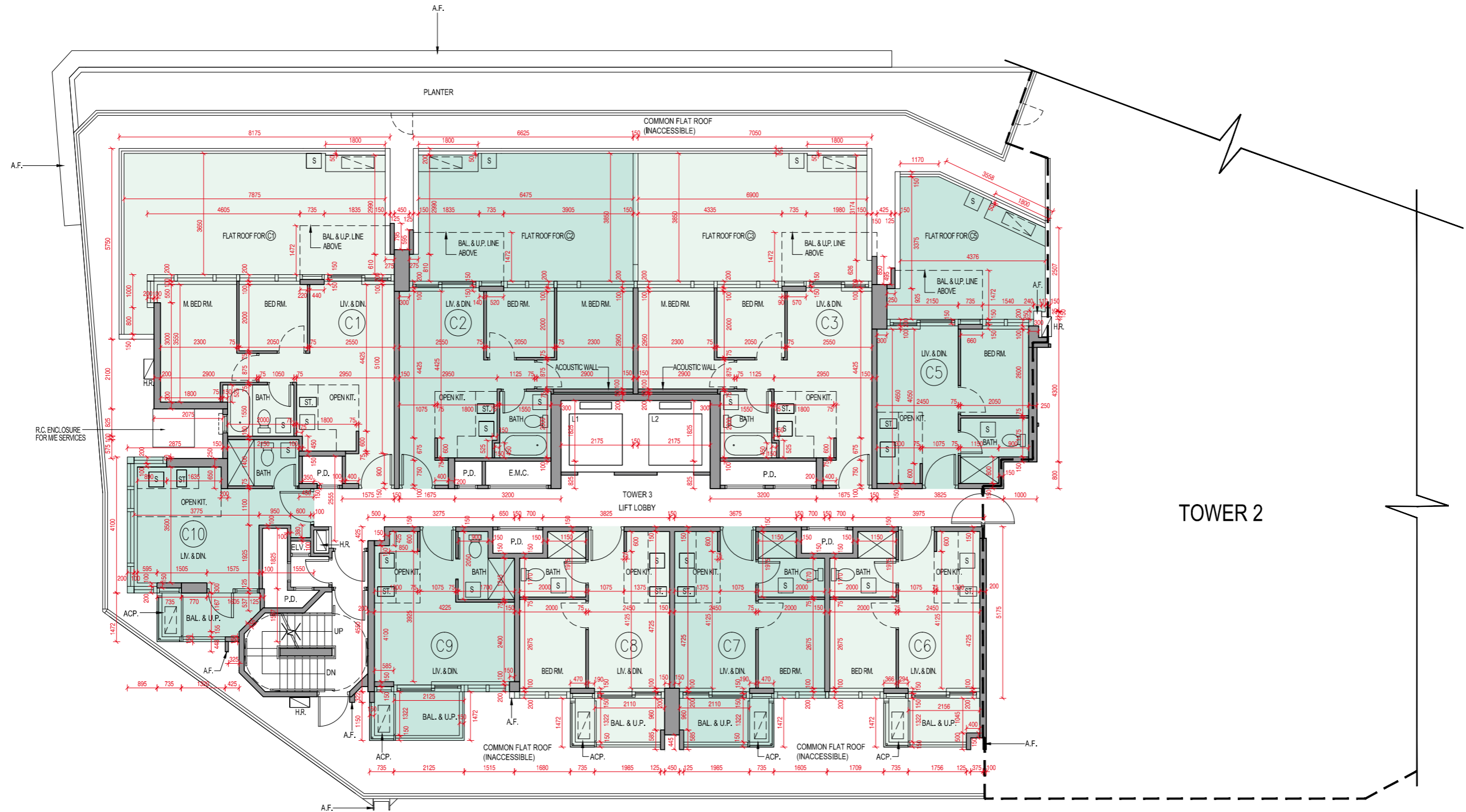
#### 備註：

- 樓面平面圖所列之尺寸為以毫米標示之建築結構尺寸。
- 不設4樓、13樓、14樓、24樓及34樓。
- 天台層為庇護天台。
- 請參閱本售樓說明書第22及23頁的備註以及名詞及簡稱之圖例以協助閱讀發展項目的住宅物業的樓面平面圖。

# FLOOR PLANS OF RESIDENTIAL PROPERTIES IN THE DEVELOPMENT

## 發展項目的住宅物業的樓面平面圖

Tower 3 5/F Floor Plan  
第3座 5樓樓面平面圖



TOWER 2

Scale: 0M(米) 5M(米)  
比例:

# FLOOR PLANS OF RESIDENTIAL PROPERTIES IN THE DEVELOPMENT

## 發展項目的住宅物業的樓面平面圖

### Tower 3 5/F Floor Plan 第3座 5樓樓面平面圖

	Tower 座數	Unit 單位		C1	C2	C3	C5	C6	C7	C8	C9	C10
		Floor 樓層										
The thickness of the floor slabs (excluding plaster) of each residential property (mm) 每個住宅物業的樓板(不包括灰泥)的厚度(毫米)	Tower 3 第3座	5/F 5樓		150	150	150	150	150	150	150	150	150
The floor-to-floor height of each residential property (mm) 每個住宅物業的層與層之間的高度(毫米)				3500 3850	3500	3500	3500 3850	3500 3850	3500 3850	3500 3850	3150 3500 3850	3500 3650 3850

The internal areas of the residential properties on the upper floors will generally be slightly larger than those on the lower floors because of the reducing thickness of the structural walls on the upper floors. (Note: This statement required under Section 10(2)(e) in Part 1 of Schedule 1 of the Residential Properties (First-hand Sales) Ordinance (Cap.621) is not applicable to the Development.)

因住宅物業的較高樓層的結構牆的厚度遞減，較高樓層的內部面積，一般比較低樓層的內部面積稍大。(註：此根據《一手住宅物業銷售條例》(第621章)附表1第1部第10(2)(e)條所規定的陳述並不適用於發展項目。)

#### Notes:

1. The dimensions in the floor plans are all structural dimensions in millimetre.
2. 4/F, 13/F, 14/F, 24/F and 34/F are omitted.
3. R/F is refuge roof.
4. Please refer to pages 22 and 23 of this sales brochure for remarks and legend of terms and abbreviations in studying the floor plans of residential properties in the Development.

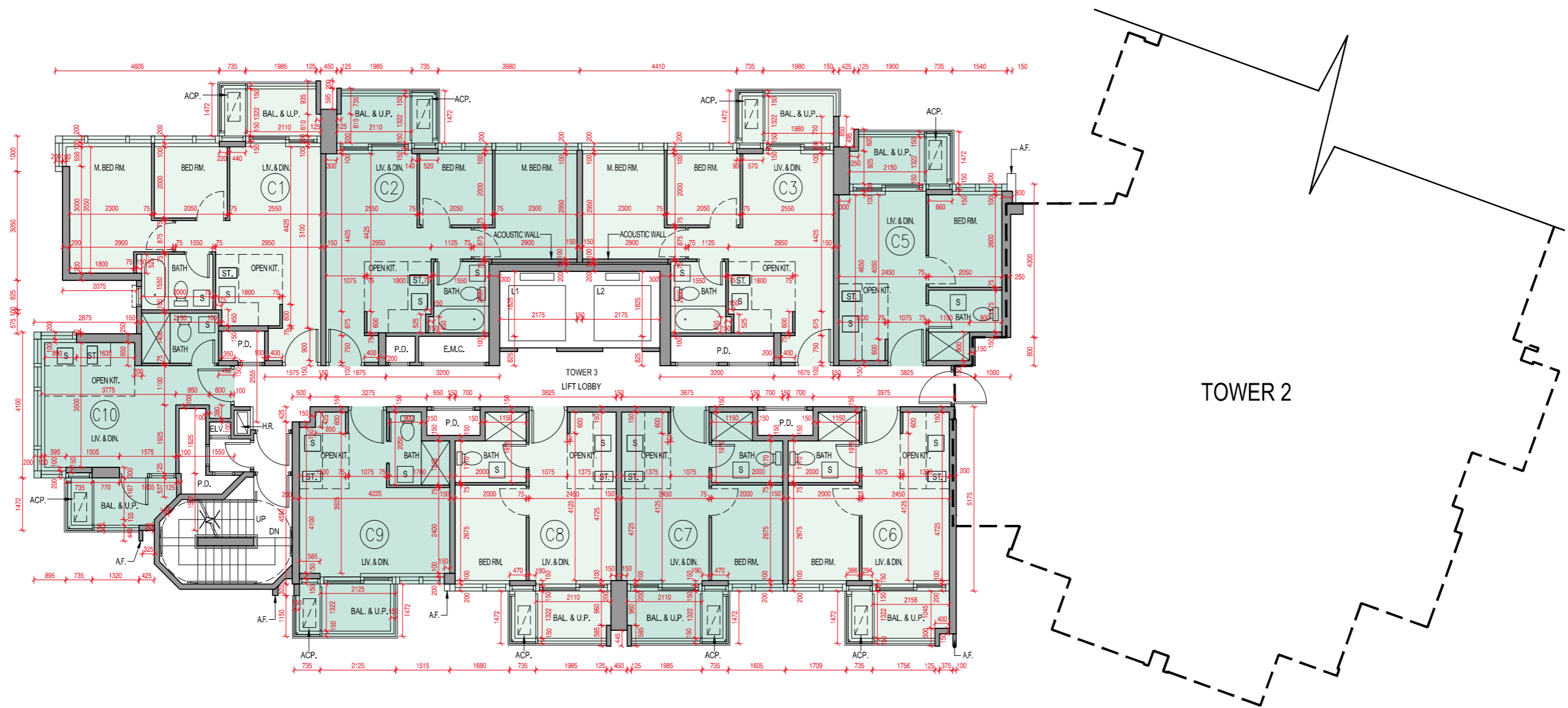
#### 備註：

1. 樓面平面圖所列之尺寸為以毫米標示之建築結構尺寸。
2. 不設4樓、13樓、14樓、24樓及34樓。
3. 天台層為庇護天台。
4. 請參閱本售樓說明書第22及23頁的備註以及名詞及簡稱之圖例以協助閱讀發展項目的住宅物業的樓面平面圖。

# FLOOR PLANS OF RESIDENTIAL PROPERTIES IN THE DEVELOPMENT

## 發展項目的住宅物業的樓面平面圖

Tower 3 第3座 6/F-12/F, 15/F-23/F, 25/F-33/F & 35/F-42/F Floor Plan  
 6樓至12樓、15樓至23樓、25樓至33樓及35樓至42樓樓面平面圖



TOWER 2

Scale: 0M(米) 5M(米)  
 比例:

# FLOOR PLANS OF RESIDENTIAL PROPERTIES IN THE DEVELOPMENT

## 發展項目的住宅物業的樓面平面圖

Tower 3 6/F-12/F, 15/F-23/F, 25/F-33/F & 35/F-42/F Floor Plan  
第3座 6樓至12樓、15樓至23樓、25樓至33樓及35樓至42樓樓面平面圖

	Tower 座數	Unit 單位		C1	C2	C3	C5	C6	C7	C8	C9	C10	
		Floor 樓層											
The thickness of the floor slabs (excluding plaster) of each residential property (mm) 每個住宅物業的樓板(不包括灰泥)的厚度(毫米)	Tower 3 第3座	6/F-12/F, 15/F-23/F, 25/F-33/F & 35/F-41/F 6樓至12樓、 15樓至23樓、 25樓至33樓及 35樓至41樓		150	150	150	150	150	150	150	150	150	
The floor-to-floor height of each residential property (mm) 每個住宅物業的層與層之間的高度(毫米)				3300	3300	3300	3300	3300	3300	3300	3300	3300	3300
The thickness of the floor slabs (excluding plaster) of each residential property (mm) 每個住宅物業的樓板(不包括灰泥)的厚度(毫米)		42/F 42樓		200	200	200	200	200	200	200	200	200	200
The floor-to-floor height of each residential property (mm) 每個住宅物業的層與層之間的高度(毫米)				3475 3500 3850 4925	3475 3500 3850 4925	3475 3500 3850 5275	3475 3500 3850 5275	3475 3500 3850 5275	3475 3500 3850 5275	3475 3500 3850 5275	3475 3500 3850 5275	3475 3500 3700 3850	3475 3500 3700 3850

The internal areas of the residential properties on the upper floors will generally be slightly larger than those on the lower floors because of the reducing thickness of the structural walls on the upper floors. (Note: This statement required under Section 10(2)(e) in Part 1 of Schedule 1 of the Residential Properties (First-hand Sales) Ordinance (Cap.621) is not applicable to the Development.)

因住宅物業的較高樓層的結構牆的厚度遞減，較高樓層的內部面積，一般比較低樓層的內部面積稍大。(註：此根據《一手住宅物業銷售條例》(第621章)附表1第1部第10(2)(e)條所規定的陳述並不適用於發展項目。)

### Notes:

1. The dimensions in the floor plans are all structural dimensions in millimetre.
2. 4/F, 13/F, 14/F, 24/F and 34/F are omitted.
3. R/F is refuge roof.
4. Please refer to pages 22 and 23 of this sales brochure for remarks and legend of terms and abbreviations in studying the floor plans of residential properties in the Development.

### 備註：

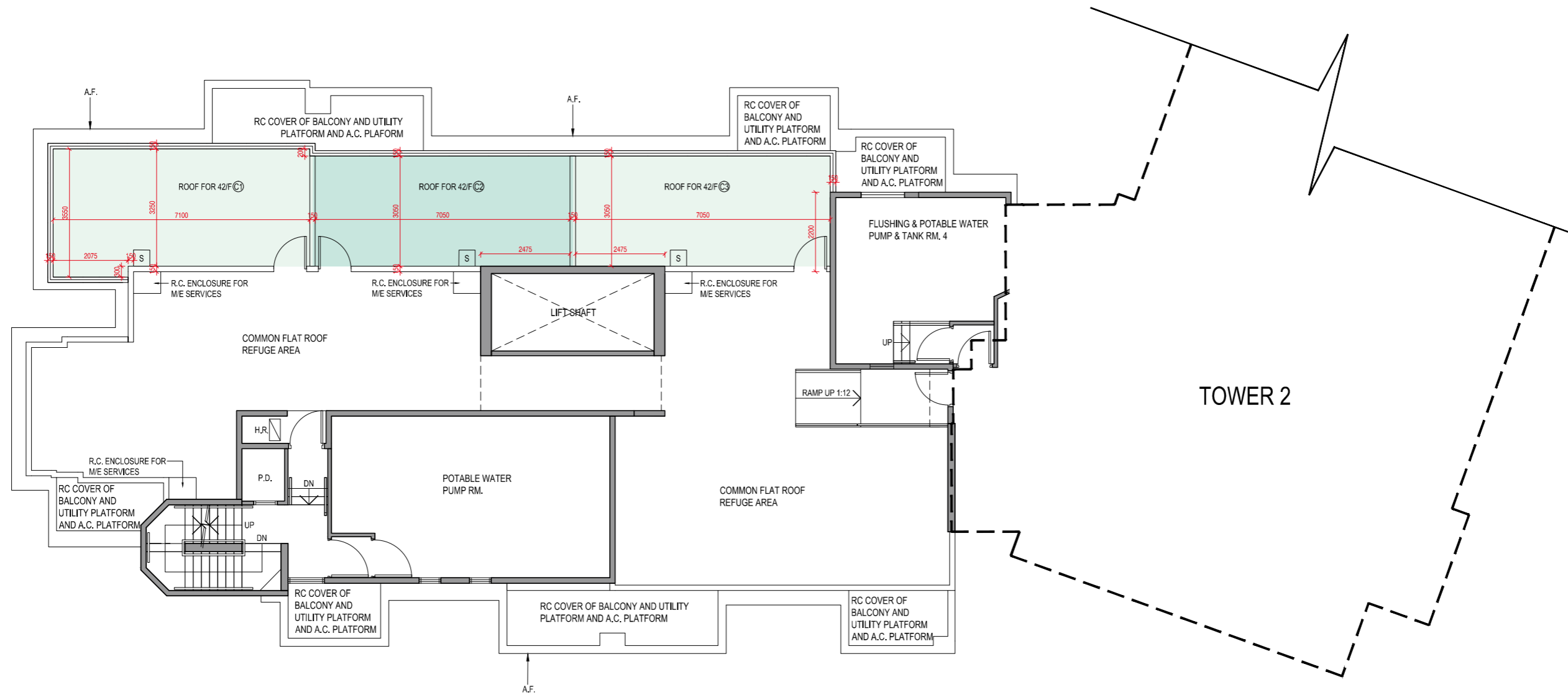
1. 樓面平面圖所列之尺寸為以毫米標示之建築結構尺寸。
2. 不設4樓、13樓、14樓、24樓及34樓。
3. 天台層為庇護天台。
4. 請參閱本售樓說明書第22及23頁的備註以及名詞及簡稱之圖例以協助閱讀發展項目的住宅物業的樓面平面圖。

# FLOOR PLANS OF RESIDENTIAL PROPERTIES IN THE DEVELOPMENT

## 發展項目的住宅物業的樓面平面圖

Tower 3  
第3座

Roof Floor Plan  
天台樓面平面圖



Scale: 0M(米) 5M(米)  
比例: 0M(米) 5M(米)

## FLOOR PLANS OF RESIDENTIAL PROPERTIES IN THE DEVELOPMENT

### 發展項目的住宅物業的樓面平面圖

#### Tower 3 Roof Floor Plan 第3座 天台樓面平面圖

	Tower 座數	Unit 單位	C1	C2	C3
		Floor 樓層			
The thickness of the floor slabs (excluding plaster) of each residential property (mm) 每個住宅物業的樓板(不包括灰泥)的厚度(毫米)	Tower 3 第3座	Roof 天台	Not Applicable 不適用		
The floor-to-floor height of each residential property (mm) 每個住宅物業的層與層之間的高度(毫米)			Not Applicable 不適用		

The internal areas of the residential properties on the upper floors will generally be slightly larger than those on the lower floors because of the reducing thickness of the structural walls on the upper floors. (Note: This statement required under Section 10(2)(e) in Part 1 of Schedule 1 of the Residential Properties (First-hand Sales) Ordinance (Cap.621) is not applicable to the Development.)

因住宅物業的較高樓層的結構牆的厚度遞減，較高樓層的內部面積，一般比較低樓層的內部面積稍大。(註：此根據《一手住宅物業銷售條例》(第621章)附表1第1部第10(2)(e)條所規定的陳述並不適用於發展項目。)

#### Notes:

- The dimensions in the floor plans are all structural dimensions in millimetre.
- 4/F, 13/F, 14/F, 24/F and 34/F are omitted.
- R/F is refuge roof.
- Please refer to pages 22 and 23 of this sales brochure for remarks and legend of terms and abbreviations in studying the floor plans of residential properties in the Development.

#### 備註：

- 樓面平面圖所列之尺寸為以毫米標示之建築結構尺寸。
- 不設4樓、13樓、14樓、24樓及34樓。
- 天台層為庇護天台。
- 請參閱本售樓說明書第22及23頁的備註以及名詞及簡稱之圖例以協助閱讀發展項目的住宅物業的樓面平面圖。