

11

FLOOR PLANS OF RESIDENTIAL PROPERTIES IN THE DEVELOPMENT 發展項目的住宅物業的樓面平面圖

Legend of Terms and/or Abbreviations used on Floor Plans

樓面平面圖中所使用名詞及簡稱之圖例：

A.P.	=	Acoustic Panel ¹	=	隔音板 ¹
AC/P	=	Air-conditioner Platform	=	冷氣機平台
AC R.C. PLINTH	=	Air-conditioner Reinforced Concrete Plinth	=	冷氣機鋼筋混凝土底座
A.F.	=	Architecture Feature	=	建築裝飾
BATH 1	=	Bathroom 1	=	浴室 1
BATH 2	=	Bathroom 2	=	浴室 2
BATH 3	=	Bathroom 3	=	浴室 3
BR 1	=	Bedroom 1	=	睡房 1
BR 2	=	Bedroom 2	=	睡房 2
BR 3	=	Bedroom 3	=	睡房 3
BAL.	=	Balcony ²	=	露台 ²
CANOPY	=		=	頂篷
COMMON CORRIDOR	=		=	公共走廊
ELE & ELV	=	Electrical Room & Extra-low Voltage Cable Duct	=	電房及特低壓電線槽
EMERGENCY GEN SET ROOM	=	Emergency Generator Set Room	=	緊急發電機機房
FAM	=	Family Room	=	家庭娛樂室
FLAT ROOF	=		=	平台
GUEST BATH	=	Guest Bathroom	=	客人浴室
GUEST BR	=	Guest Bedroom	=	客人睡房
H.R.	=	Hose Reel	=	消防喉轆
KIT	=	Kitchen	=	廚房
LAV	=	Lavatory	=	洗手間
LIFT 01	=		=	升降機 01
LIFT 02	=		=	升降機 02
LIFT OVERRUN	=		=	升降機緩衝
LIV. / DIN.	=	Living / Dining Room	=	客飯廳

Notes

1. Acoustic Panel refers to the Acoustic Window (baffle type) as mentioned in the Noise Impact Assessment Report prepared by Westwood Hong & Associates Limited dated 13 October 2022.
2. Balcony refers to the Enhanced Acoustic Balcony as mentioned in the Noise Impact Assessment Report prepared by Westwood Hong & Associates Limited dated 13 October 2022.

備註

1. 隔音板意指由康冠偉顧問有限公司於2022年10月13日擬備的噪音影響評估報告中提及的減音窗戶(擋音式)。
2. 露台意指由康冠偉顧問有限公司於2022年10月13日擬備的噪音影響評估報告中提及的強效減音露台。

11

FLOOR PLANS OF RESIDENTIAL PROPERTIES IN THE DEVELOPMENT 發展項目的住宅物業的樓面平面圖

MAINTENANCE WIN.	=	Maintenance Window	=	維修窗戶
M BATH	=	Master Bathroom	=	主人浴室
M BR	=	Master Bedroom	=	主人睡房
M.F.	=	Metal Fence	=	金屬護欄
P.D.	=	Pipe Duct	=	管道槽
PLANTER	=		=	花槽
POWDER ROOM	=		=	化妝間
PRIVATE GARDEN	=		=	私人花園
PRIVATE LIFT LOBBY	=		=	私人升降機大堂
REFUSE CHUTE	=		=	垃圾槽
ROOF	=		=	天台
RSR	=	Refuse Storage Room	=	垃圾貯存室
RSR DUCT	=	Refuse Storage Room Duct	=	垃圾貯存室管道
SKYLIGHT	=		=	天窗
STORE	=		=	儲物室
STORE 1	=		=	儲物室 1
S.A.P	=	Steel Access Panel	=	檢修面板
TRS	=	Temporary Refuge Space	=	臨時庇護處
U.P.	=	Utility Platform	=	工作平台
VENT DUCT (RSR)	=	Ventilation Duct (Refuse Storage Room)	=	通風管道 (垃圾貯存室)
VOID	=		=	中空
WALK-IN CLOSET	=		=	衣帽間
WATER FEATURE	=		=	庭園水景

Notes

1. Acoustic Panel refers to the Acoustic Window (baffle type) as mentioned in the Noise Impact Assessment Report prepared by Westwood Hong & Associates Limited dated 13 October 2022.
2. Balcony refers to the Enhanced Acoustic Balcony as mentioned in the Noise Impact Assessment Report prepared by Westwood Hong & Associates Limited dated 13 October 2022.

備註

1. 隔音板意指由康冠偉顧問有限公司於2022年10月13日擬備的噪音影響評估報告中提及的減音窗戶(擋音式)。
2. 露台意指由康冠偉顧問有限公司於2022年10月13日擬備的噪音影響評估報告中提及的強效減音露台。

11

FLOOR PLANS OF RESIDENTIAL PROPERTIES IN THE DEVELOPMENT 發展項目的住宅物業的樓面平面圖

Notes applicable to the floor plans in this section :

1. There may be architectural features and/ or exposed pipes/ductings on external walls of some of the floors.
2. There may be ceiling bulkheads and sunken slab of the above units at living room, dining room, bedrooms, utility room, kitchen, bathroom, lavatory and/or corridors of some residential units for the air-conditioner system and/or mechanical and electrical services.
3. Symbols of fittings and fitments shown on the floor plans, such as bathtubs, sink, water closets, shower, sink counter, etc. are architectural symbols retrieved from the latest approved general building plans and are for general indication only.
4. The internal ceiling height within some units may vary due to structural, architectural and/ or decoration design variations.
5. There may be common pipes and/or mechanical and electrical services within balconies, utility platforms, flat roofs and roofs of some residential units.
6. Balconies, utility platforms and air-conditioning platforms are non-enclosed area.
7. For some residential units, the air conditioner platform(s) outside the unit will be placed with outdoor air conditioner unit(s) belonging to that unit and/or other residential units.
8. The dimensions of the floor plans are all structural dimensions in millimetre.

適用於本節各樓面平面圖之備註：

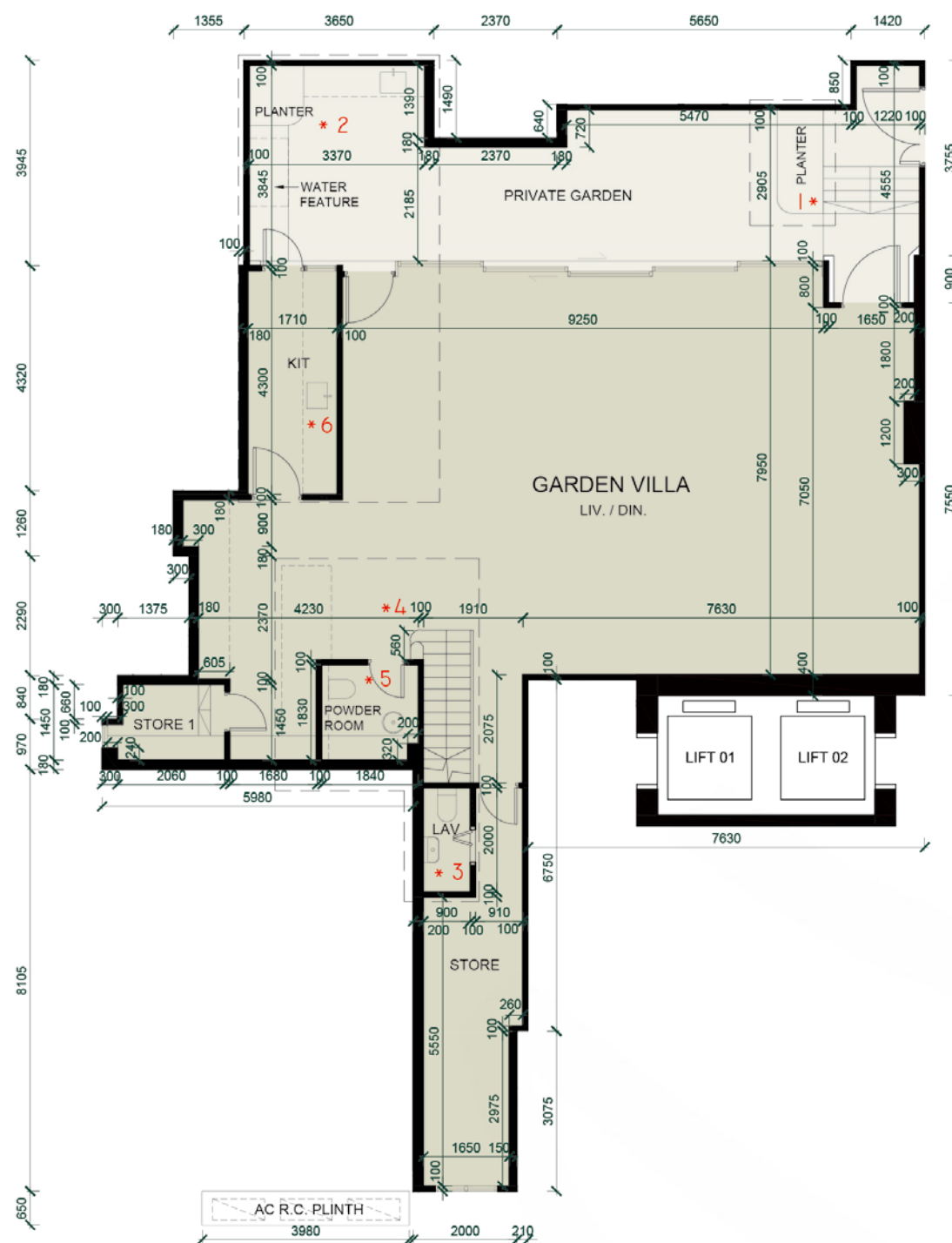
1. 部份樓層外牆或設有建築裝飾及/或外露喉管/管道。
2. 部份住宅單位之客廳、飯廳、睡房、工作間、廚房、浴室、洗手間及/或走廊，或設有假天花及上層跌級樓板，內裝有冷氣系統及/或其他機電設備。
3. 樓面平面圖上所顯示的形象裝置符號，例如浴缸、洗滌盆、坐廁、花灑、洗滌盆櫃等乃摘自最新的經批准的建築圖則，只作一般性標誌。
4. 部份單位之天花高度將會因應結構，建築設計及/或裝修設計上的需要而有差異。
5. 部分住宅單位之露台、工作平台、平台及天台內或裝有公用喉管及/或機電設備。
6. 露台、工作平台及冷氣機平台為不可封閉的地方。
7. 部分住宅單位外的冷氣機平台將會放置屬於其單位及/或其他住宅單位的一部或多部冷氣室外機。
8. 平面圖所列之數字為以毫米標示之建築結構尺寸。

11

FLOOR PLANS OF RESIDENTIAL PROPERTIES IN THE DEVELOPMENT 發展項目的住宅物業的樓面平面圖

G/F Floor Plan Showing Latest Layout

地下現狀樓面平面圖



Scale 比例尺



*This part of layout has been altered by way of minor works or exempted building works under the Buildings Ordinance after completion of the Development.

The alteration works are as follows:

1. Layout at PRIVATE GARDEN have been amended.
2. Planter, water feature and sink have been added at PRIVATE GARDEN.
3. Single-leaf door at LAV has been changed to folding door and basin has been relocated.
4. Layout of staircase has been amended.
5. Layout at POWDER ROOM has been amended.
6. Double sink at KIT has been changed to single sink.

* 此部份因在發展項目落成後進行小型工程或獲《建築物條例》豁免的工程而有所改動。該等改動如下：

1. 私人花園佈局改動。
2. 私人花園加設花槽，庭園水景及洗滌盆。
3. 洗手間的單扇門更改為摺門及面盆移位。
4. 樓梯佈局改動。
5. 化妝間佈局改動。
6. 廚房的雙洗滌盆更改為單洗滌盆。

11

FLOOR PLANS OF RESIDENTIAL PROPERTIES IN THE DEVELOPMENT 發展項目的住宅物業的樓面平面圖

G/F Floor Plan

地下平面圖

Each of the Residential Property 每個住宅物業	Floor 樓層	Unit 單位
		Garden Villa
Floor-to-floor height of each residential property (mm)* 每個住宅物業的層與層之間的高度 (毫米)*	G/F 地下	3500, 3800, 4050, 4250, 4450
Thickness of the floor slabs (excluding plaster) of each residential property (mm) 每個住宅物業的樓板的厚度 (不包括灰泥) (毫米)		170, 200

The internal areas of the residential properties on the upper floors will generally be slightly larger than those on the lower floors because of the reducing thickness of the structural walls on the upper floors. (This does not apply to the residential properties in the Development because the design of the Development does not involve reducing thickness of structural walls of residential properties on the upper floors and hence internal areas of those residential properties will not be increased.)

Notes

- The dimensions in the floor plans are all structural dimensions in millimetre.
- Please refer to pages 27 and 28 of this Sales Brochure for remarks, legend of the terms and abbreviations shown in the floor plan.

* Floor-to-Floor Height refers to the height between the top surface of the structural slab of a floor and the top surface of the structural slab of its immediate upper floor.

因住宅物業的較高樓層的結構牆的厚度遞減，較高樓層的內部面積，一般比較低樓層的內部面積稍大。(不適用於發展項目內的住宅物業，因為發展項目的設計是不牽涉較高樓層的住宅物業的結構牆的厚度遞減。因此，該等住宅物業的內部面積不會增加。)

備註

- 樓面平面圖所列之尺寸為以毫米標示之建築結構尺寸。
- 有關樓面平面圖中顯示之附註、名詞之簡稱之圖例，請參閱本售樓說明書第27頁至第28頁。

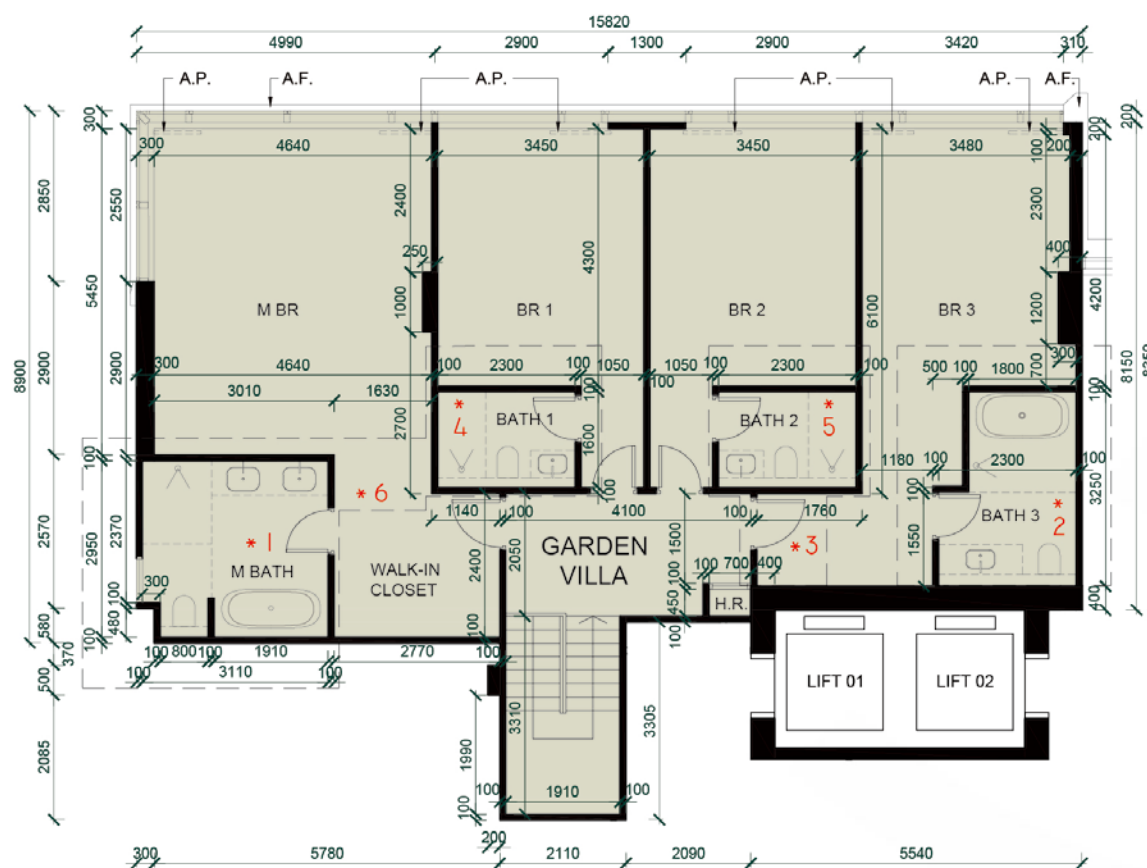
* 層與層之間的高度指該樓層之石屎地台面與上一層石屎地台面之高度距離。

11

FLOOR PLANS OF RESIDENTIAL PROPERTIES IN THE DEVELOPMENT 發展項目的住宅物業的樓面平面圖

1/F Floor Plan Showing Latest Layout

1樓現狀樓面平面圖



* This part of layout has been altered by way of minor works or exempted building works under the Buildings Ordinance after completion of the Development.

The alteration works are as follows:

1. Layout at M BATH has been amended.
2. Layout at BATH 3 has been amended.
3. Door at BR 3 has been relocated.
4. Bathtub at BATH 1 has been changed to shower.
5. Bathtub at BATH 2 has been changed to shower.
6. Non-structural wall between M BR and WALK-IN CLOSET has been omitted.

* 此部份因在發展項目落成後進行小型工程或獲《建築物條例》豁免的工程而有所改動。該等改動如下：

1. 主人浴室佈局改動。
2. 浴室3佈局改動。
3. 睡房3門位置改動。
4. 浴室1的浴缸更改為淋浴間。
5. 浴室2的浴缸更改為淋浴間。
6. 主人睡房與衣帽間之間非結構牆移除。

Scale 比例尺



11

FLOOR PLANS OF RESIDENTIAL PROPERTIES IN THE DEVELOPMENT 發展項目的住宅物業的樓面平面圖

1/F Floor Plan

1樓平面圖

Each of the Residential Property 每個住宅物業	Floor 樓層	Unit 單位
		Garden Villa
Floor-to-floor height of each residential property (mm)* 每個住宅物業的層與層之間的高度 (毫米)*	1/F 1樓	4050, 4150, 4380, 4500
Thickness of the floor slabs (excluding plaster) of each residential property (mm) 每個住宅物業的樓板的厚度 (不包括灰泥) (毫米)		150, 200

The internal areas of the residential properties on the upper floors will generally be slightly larger than those on the lower floors because of the reducing thickness of the structural walls on the upper floors. (This does not apply to the residential properties in the Development because the design of the Development does not involve reducing thickness of structural walls of residential properties on the upper floors and hence internal areas of those residential properties will not be increased.)

Notes

- The dimensions in the floor plans are all structural dimensions in millimetre.
 - Please refer to pages 27 and 28 of this Sales Brochure for remarks, legend of the terms and abbreviations shown in the floor plan.
- * Floor-to-Floor Height refers to the height between the top surface of the structural slab of a floor and the top surface of the structural slab of its immediate upper floor.

因住宅物業的較高樓層的結構牆的厚度遞減，較高樓層的內部面積，一般比較低樓層的內部面積稍大。(不適用於發展項目內的住宅物業，因為發展項目的設計是不牽涉較高樓層的住宅物業的結構牆的厚度遞減。因此，該等住宅物業的內部面積不會增加。)

備註

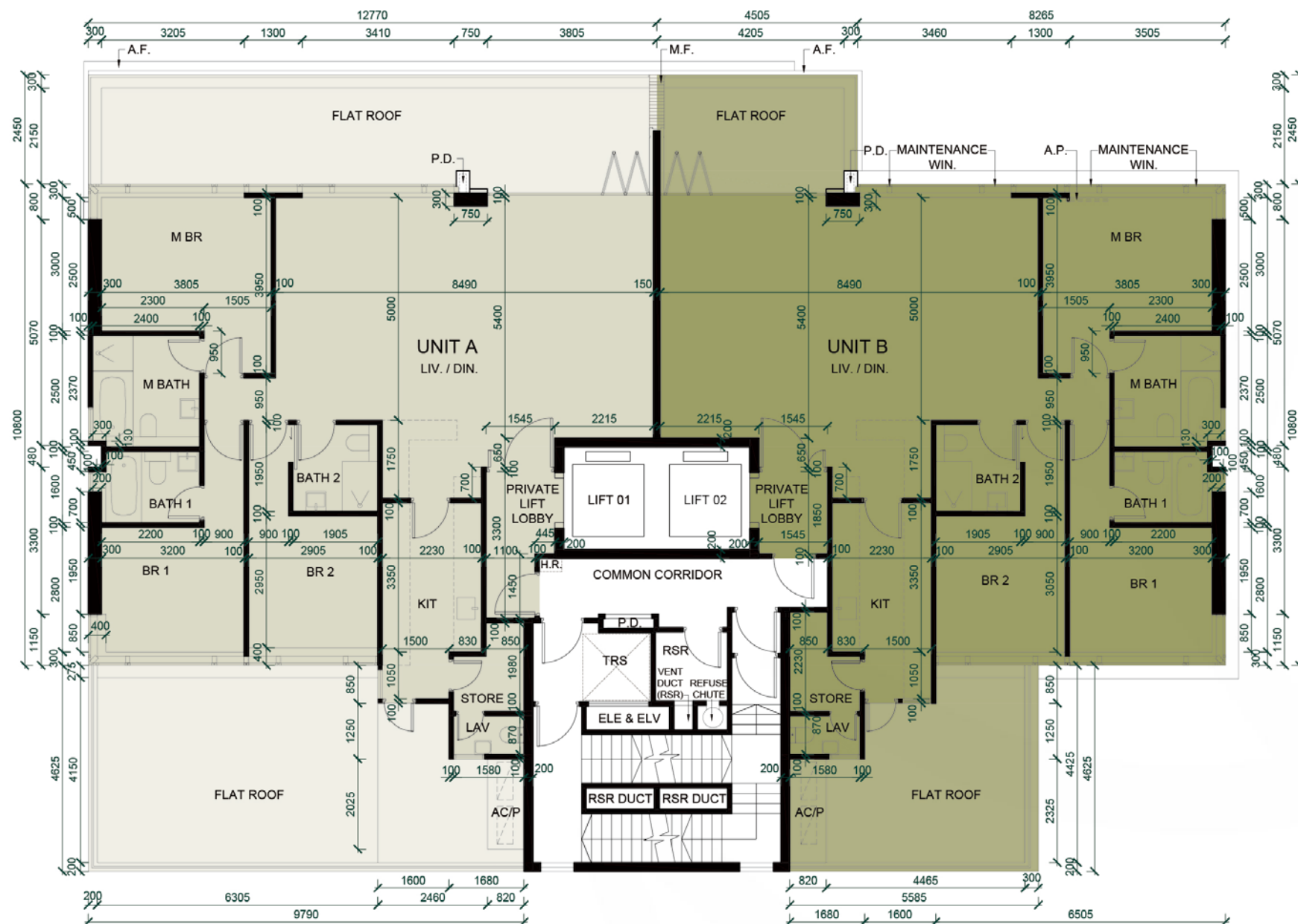
- 樓面平面圖所列之尺寸為以毫米標示之建築結構尺寸。
 - 有關樓面平面圖中顯示之附註、名詞之簡稱之圖例，請參閱本售樓說明書第27頁至第28頁。
- * 層與層之間的高度指該樓層之石屎地台面與上一層石屎地台面之高度距離。

11

FLOOR PLANS OF RESIDENTIAL PROPERTIES IN THE DEVELOPMENT 發展項目的住宅物業的樓面平面圖

2/F Floor Plan

2樓平面圖



Scale 比例尺

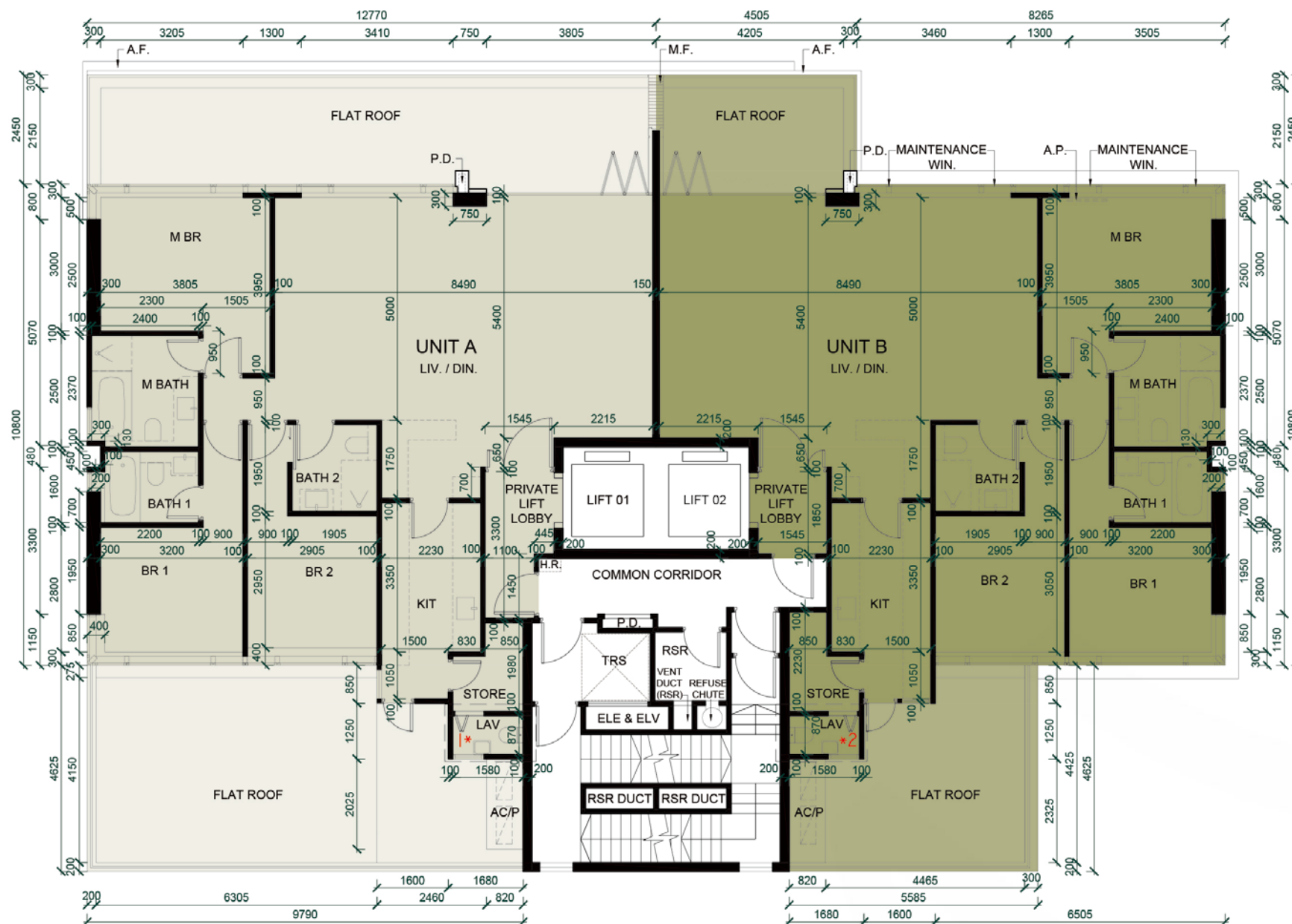


11

FLOOR PLANS OF RESIDENTIAL PROPERTIES IN THE DEVELOPMENT 發展項目的住宅物業的樓面平面圖

2/F Floor Plan Showing Latest Layout

2樓現狀樓面平面圖



* This part of layout has been altered by way of minor works or exempted building works under the Buildings Ordinance after completion of the Development.

The alteration works are as follows:

1. Single-leaf door at LAV has been changed to folding door.
2. Single-leaf door at LAV has been changed to folding door.

* 此部份因在發展項目落成後進行小型工程或獲《建築物條例》豁免的工程而有所改動。該等改動如下：

1. 洗手間的單扇門更改為摺門。
2. 洗手間的單扇門更改為摺門。

Scale 比例尺



11

FLOOR PLANS OF RESIDENTIAL PROPERTIES IN THE DEVELOPMENT 發展項目的住宅物業的樓面平面圖

2/F Floor Plan

2樓平面圖

Each of the Residential Property 每個住宅物業	Floor 樓層	Unit 單位	
		A	B
Floor-to-floor height of each residential property (mm)* 每個住宅物業的層與層之間的高度 (毫米)*	2/F 2樓	3050, 3100, 3150, 3500, 3700, 3850, 3950	3050, 3100, 3150, 3500, 3700
Thickness of the floor slabs (excluding plaster) of each residential property (mm) 每個住宅物業的樓板的厚度 (不包括灰泥) (毫米)		200	200, 300, 900, 1000

The internal areas of the residential properties on the upper floors will generally be slightly larger than those on the lower floors because of the reducing thickness of the structural walls on the upper floors. (This does not apply to the residential properties in the Development because the design of the Development does not involve reducing thickness of structural walls of residential properties on the upper floors and hence internal areas of those residential properties will not be increased.)

Notes

1. The dimensions in the floor plans are all structural dimensions in millimetre.
2. Please refer to pages 27 and 28 of this Sales Brochure for remarks, legend of the terms and abbreviations shown in the floor plan.

* Floor-to-Floor Height refers to the height between the top surface of the structural slab of a floor and the top surface of the structural slab of its immediate upper floor.

因住宅物業的較高樓層的結構牆的厚度遞減，較高樓層的內部面積，一般比較低樓層的內部面積稍大。(不適用於發展項目內的住宅物業，因為發展項目的設計是不牽涉較高樓層的住宅物業的結構牆的厚度遞減。因此，該等住宅物業的內部面積不會增加。)

備註

1. 樓面平面圖所列之尺寸為以毫米標示之建築結構尺寸。
2. 有關樓面平面圖中顯示之附註、名詞之簡稱之圖例，請參閱本售樓說明書第27頁至第28頁。

* 層與層之間的高度指該樓層之石屎地台面與上一層石屎地台面之高度距離。

11

FLOOR PLANS OF RESIDENTIAL PROPERTIES IN THE DEVELOPMENT 發展項目的住宅物業的樓面平面圖

3/F - 6/F Floor Plan (4/F Omitted)

3樓至6樓平面圖(不設4樓)



Scale 比例尺

0

5M / 米

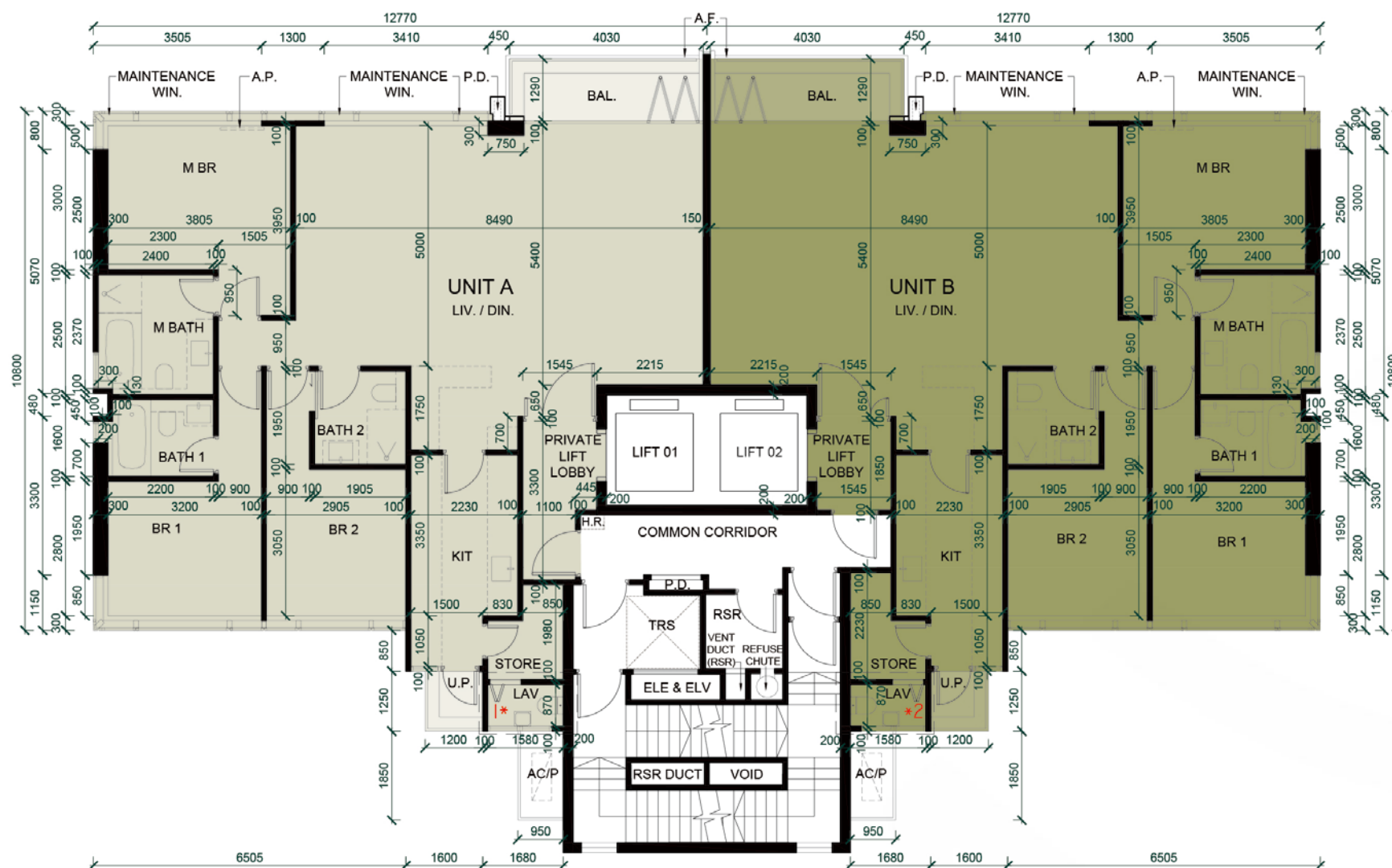


11

FLOOR PLANS OF RESIDENTIAL PROPERTIES IN THE DEVELOPMENT 發展項目的住宅物業的樓面平面圖

3/F - 6/F Floor Plan Showing Latest Layout (4/F Omitted)

3樓至6樓現狀樓面平面圖(不設4樓)



* This part of layout has been altered by way of minor works or exempted building works under the Buildings Ordinance after completion of the Development.

The alteration works are as follows:

1. Single-leaf door at LAV has been changed to folding door.
2. Single-leaf door at LAV has been changed to folding door.

* 此部份因在發展項目落成後進行小型工程或獲《建築物條例》豁免的工程而有所改動。該等改動如下：

1. 洗手間的單扇門更改為摺門。
2. 洗手間的單扇門更改為摺門。

Scale 比例尺



11

FLOOR PLANS OF RESIDENTIAL PROPERTIES IN THE DEVELOPMENT 發展項目的住宅物業的樓面平面圖

3/F - 6/F Floor Plan (4/F Omitted)

3樓至6樓平面圖(不設4樓)

Each of the Residential Property 每個住宅物業	Floor 樓層	Unit 單位	
		A	B
Floor-to-floor height of each residential property (mm)* 每個住宅物業的層與層之間的高度(毫米)*	3/F - 5/F (4/F Omitted) 3樓至5樓 (不設4樓)	3500	3500
	6/F 6樓	3100, 3150, 3200, 3500, 3650, 3850, 3900, 3950	3100, 3150, 3200, 3500, 3650, 3850, 3900, 3950
Thickness of the floor slabs (excluding plaster) of each residential property (mm) 每個住宅物業的樓板的厚度(不包括灰泥)(毫米)	3/F - 6/F (4/F Omitted) 3樓至6樓 (不設4樓)	125, 150, 250, 300	125, 150, 250, 300

The internal areas of the residential properties on the upper floors will generally be slightly larger than those on the lower floors because of the reducing thickness of the structural walls on the upper floors. (This does not apply to the residential properties in the Development because the design of the Development does not involve reducing thickness of structural walls of residential properties on the upper floors and hence internal areas of those residential properties will not be increased.)

Notes

1. The dimensions in the floor plans are all structural dimensions in millimetre.
2. Please refer to pages 27 and 28 of this Sales Brochure for remarks, legend of the terms and abbreviations shown in the floor plan.

* Floor-to-Floor Height refers to the height between the top surface of the structural slab of a floor and the top surface of the structural slab of its immediate upper floor.

因住宅物業的較高樓層的結構牆的厚度遞減，較高樓層的內部面積，一般比較低樓層的內部面積稍大。(不適用於發展項目內的住宅物業，因為發展項目的設計是不牽涉較高樓層的住宅物業的結構牆的厚度遞減。因此，該等住宅物業的內部面積不會增加。)

備註

1. 樓面平面圖所列之尺寸為以毫米標示之建築結構尺寸。
2. 有關樓面平面圖中顯示之附註、名詞之簡稱之圖例，請參閱本售樓說明書第27頁至第28頁。

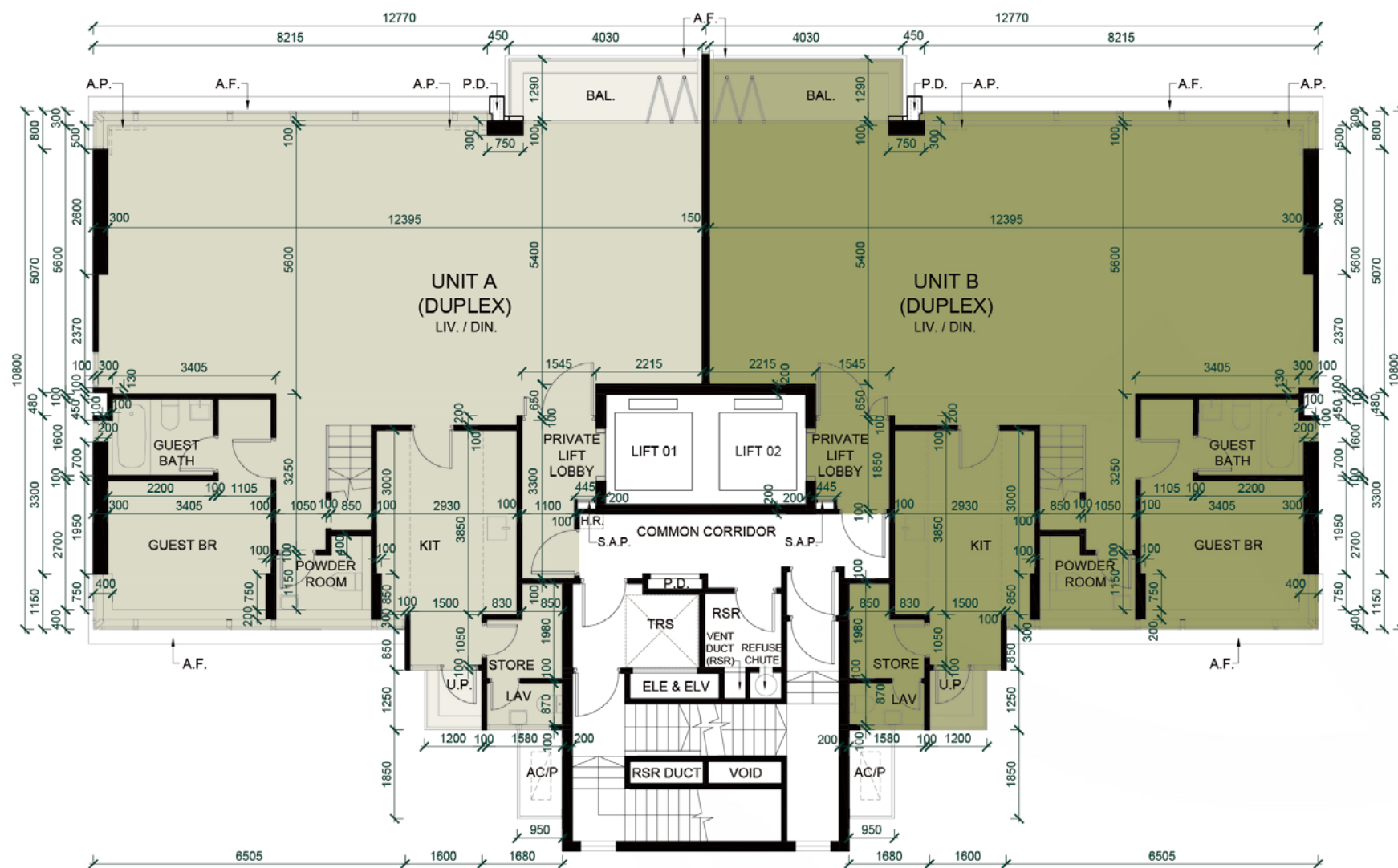
* 層與層之間的高度指該樓層之石屎地台面與上一層石屎地台面之高度距離。

11

FLOOR PLANS OF RESIDENTIAL PROPERTIES IN THE DEVELOPMENT 發展項目的住宅物業的樓面平面圖

7/F Floor Plan

7樓平面圖



Scale 比例尺



11

FLOOR PLANS OF RESIDENTIAL PROPERTIES IN THE DEVELOPMENT 發展項目的住宅物業的樓面平面圖

7/F Floor Plan Showing Latest Layout

7樓現狀樓面平面圖



* This part of layout has been altered by way of minor works or exempted building works under the Buildings Ordinance after completion of the Development.

The alteration works are as follows:

1. Layout of staircase has been amended.
2. Layout at POWDER ROOM has been amended.
3. Bathtub at GUEST BATH has been changed to shower.
4. Furring wall at low level has been added.
5. Swing direction of door at KIT has been changed.
6. Single-leaf door at LAV has been changed to folding door.
7. Door has been added.
8. Door has been added.
9. Single-leaf door at LAV has been changed to folding door.
10. Single-leaf door at Store has been changed to sliding door.
11. Layout of POWDER ROOM has been amended.

* 此部份因在發展項目落成後進行小型工程或獲《建築物條例》豁免的工程而有所改動。該等改動如下：

1. 樓梯佈局改動。
2. 化妝間佈局改動。
3. 客人浴室的浴缸更改為淋浴間。
4. 加設矮牆。
5. 廚房的擺門方向改動。
6. 洗手間的單扇門更改為摺門。
7. 加設門。
8. 加設門。
9. 洗手間的單扇門更改為摺門。
10. 儲物室的單扇門更改為趟門。
11. 化妝間佈局改動。

Scale 比例尺



11

FLOOR PLANS OF RESIDENTIAL PROPERTIES IN THE DEVELOPMENT 發展項目的住宅物業的樓面平面圖

7/F Floor Plan

7樓平面圖

Each of the Residential Property 每個住宅物業	Floor 樓層	Unit 單位	
		A (Duplex)	B (Duplex)
Floor-to-floor height of each residential property (mm)* 每個住宅物業的層與層之間的高度 (毫米)*	7/F 7樓	3350, 3500, 3650, 3800, 3850, 3900	3350, 3500, 3650, 3800, 3850, 3900
Thickness of the floor slabs (excluding plaster) of each residential property (mm) 每個住宅物業的樓板的厚度 (不包括灰泥) (毫米)		125, 150, 250, 300, 400, 450, 500	125, 150, 250, 300, 400, 450, 500

The internal areas of the residential properties on the upper floors will generally be slightly larger than those on the lower floors because of the reducing thickness of the structural walls on the upper floors. (This does not apply to the residential properties in the Development because the design of the Development does not involve reducing thickness of structural walls of residential properties on the upper floors and hence internal areas of those residential properties will not be increased.)

Notes

1. The dimensions in the floor plans are all structural dimensions in millimetre.
2. Please refer to pages 27 and 28 of this Sales Brochure for remarks, legend of the terms and abbreviations shown in the floor plan.

* Floor-to-Floor Height refers to the height between the top surface of the structural slab of a floor and the top surface of the structural slab of its immediate upper floor.

因住宅物業的較高樓層的結構牆的厚度遞減，較高樓層的內部面積，一般比較低樓層的內部面積稍大。(不適用於發展項目內的住宅物業，因為發展項目的設計是不牽涉較高樓層的住宅物業的結構牆的厚度遞減。因此，該等住宅物業的內部面積不會增加。)

備註

1. 樓面平面圖所列之尺寸為以毫米標示之建築結構尺寸。
2. 有關樓面平面圖中顯示之附註、名詞之簡稱之圖例，請參閱本售樓說明書第27頁至第28頁。

* 層與層之間的高度指該樓層之石屎地台面與上一層石屎地台面之高度距離。

11

FLOOR PLANS OF RESIDENTIAL PROPERTIES IN THE DEVELOPMENT 發展項目的住宅物業的樓面平面圖

8/F Floor Plan Showing Latest Layout

8樓現狀樓面平面圖



* This part of layout has been altered by way of minor works or exempted building works under the Buildings Ordinance after completion of the Development.

The alteration works are as follows:

1. Nonstructural wall at M BR has been removed.
2. Single-leaf door at M BR has been changed to double-leaf door.
3. Nonstructural wall at FAM has been removed.
4. Door at BR 3 has been relocated.
5. Layout at M BATH has been amended.
6. Bathtub at BATH 1 has been changed to shower.
7. Bathtub at BATH 2 has been changed to shower.
8. Bathtub at BATH 3 has been changed to shower.
9. Single-leaf door at FAM has been changed to glass bi-fold partition.
10. Layout at M BATH has been amended.
11. Furring wall at low level has been added.
12. Furring wall at low level has been added.
13. Furring wall at low level has been added.

* 此部份因在發展項目落成後進行小型工程或獲《建築物條例》豁免的工程而有所改動。該等改動如下：

1. 主人睡房非結構牆移除。
2. 主人睡房的單扇門更改為雙扇門。
3. 家庭娛樂室非結構牆移除。
4. 睡房3門位置改動。
5. 主人浴室佈局改動。
6. 浴室1的浴缸更改為淋浴間。
7. 浴室2的浴缸更改為淋浴間。
8. 浴室3的浴缸更改為淋浴間。
9. 家庭娛樂室的單扇門更改為玻璃摺門。
10. 主人浴室佈局改動。
11. 加設矮牆。
12. 加設矮牆。
13. 加設矮牆。

Scale 比例尺

0 5M / 米



11

FLOOR PLANS OF RESIDENTIAL PROPERTIES IN THE DEVELOPMENT 發展項目的住宅物業的樓面平面圖

8/F Floor Plan

8樓平面圖

Each of the Residential Property 每個住宅物業	Floor 樓層	Unit 單位	
		A (Duplex)	B (Duplex)
Floor-to-floor height of each residential property (mm)* 每個住宅物業的層與層之間的高度 (毫米) *	8/F 8樓	3500, 3600	3500, 3600
Thickness of the floor slabs (excluding plaster) of each residential property (mm) 每個住宅物業的樓板的厚度 (不包括灰泥) (毫米)		125, 150, 250, 300	125, 150, 250, 300

The internal areas of the residential properties on the upper floors will generally be slightly larger than those on the lower floors because of the reducing thickness of the structural walls on the upper floors. (This does not apply to the residential properties in the Development because the design of the Development does not involve reducing thickness of structural walls of residential properties on the upper floors and hence internal areas of those residential properties will not be increased.)

Notes

- The dimensions in the floor plans are all structural dimensions in millimetre.
- Please refer to pages 27 and 28 of this Sales Brochure for remarks, legend of the terms and abbreviations shown in the floor plan.

* Floor-to-Floor Height refers to the height between the top surface of the structural slab of a floor and the top surface of the structural slab of its immediate upper floor.

因住宅物業的較高樓層的結構牆的厚度遞減，較高樓層的內部面積，一般比較低樓層的內部面積稍大。(不適用於發展項目內的住宅物業，因為發展項目的設計是不牽涉較高樓層的住宅物業的結構牆的厚度遞減。因此，該等住宅物業的內部面積不會增加。)

備註

- 樓面平面圖所列之尺寸為以毫米標示之建築結構尺寸。
- 有關樓面平面圖中顯示之附註、名詞之簡稱之圖例，請參閱本售樓說明書第27頁至第28頁。

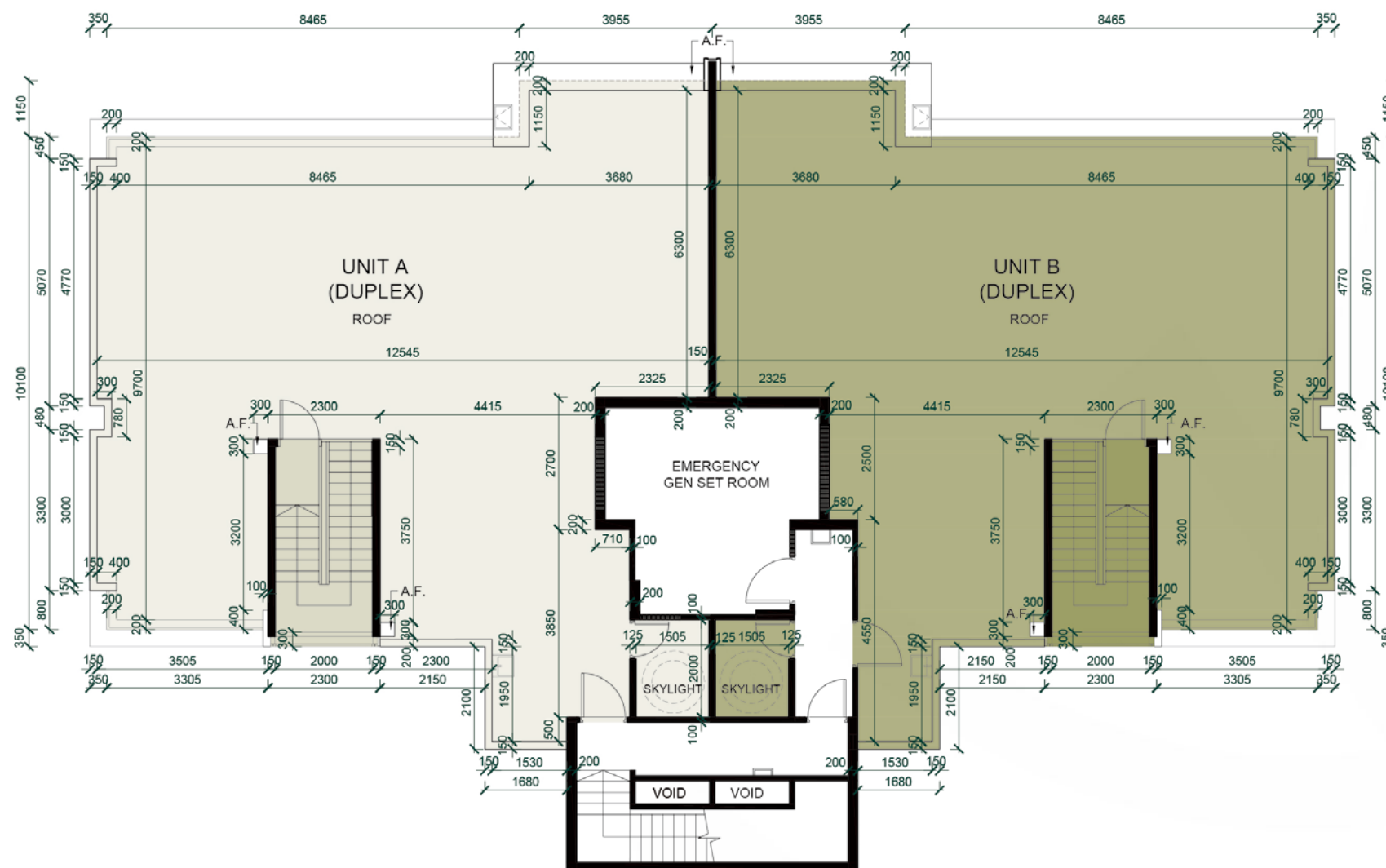
* 層與層之間的高度指該樓層之石屎地台面與上一層石屎地台面之高度距離。

11

FLOOR PLANS OF RESIDENTIAL PROPERTIES IN THE DEVELOPMENT 發展項目的住宅物業的樓面平面圖

Roof Floor Plan

天台平面圖



Scale 比例尺

0 5M / 米

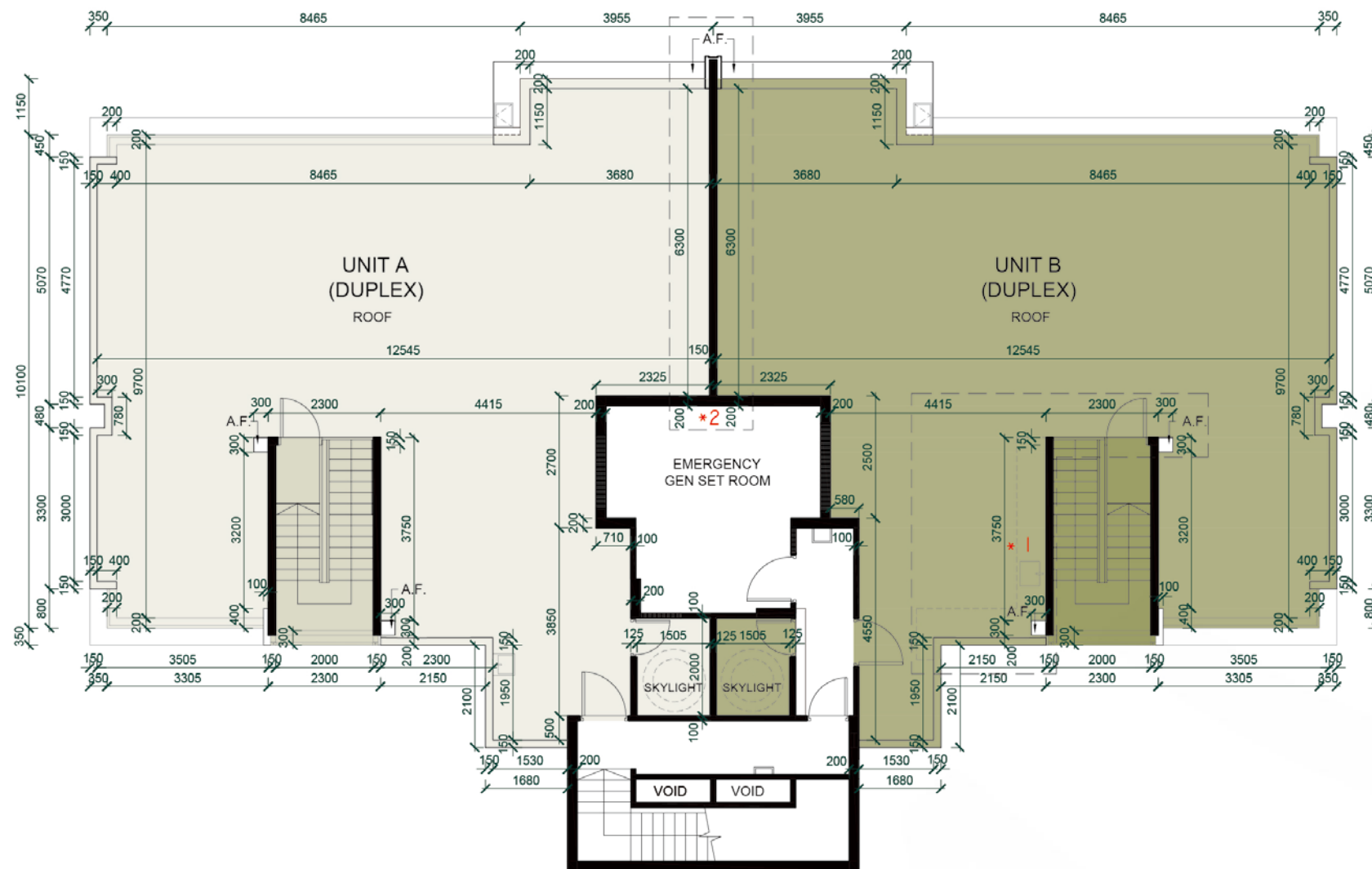


11

FLOOR PLANS OF RESIDENTIAL PROPERTIES IN THE DEVELOPMENT 發展項目的住宅物業的樓面平面圖

Roof Floor Plan Showing Latest Layout

天台現狀樓面平面圖



* This part of layout has been altered by way of minor works or exempted building works under the Buildings Ordinance after completion of the Development.

The alteration works are as follows:

1. Sink has been relocated.
2. Metal capping has been added.

* 此部份因在發展項目落成後進行小型工程或獲《建築物條例》豁免的工程而有所改動。該等改動如下：

1. 洗滌盆移位。
2. 加設金屬頂蓋。

Scale 比例尺

0 5M / 米



11

FLOOR PLANS OF RESIDENTIAL PROPERTIES IN THE DEVELOPMENT 發展項目的住宅物業的樓面平面圖

Roof Floor Plan

天台平面圖

Each of the Residential Property 每個住宅物業	Floor 樓層	Unit 單位	
		A (Duplex)	B (Duplex)
Floor-to-floor height of each residential property (mm)* 每個住宅物業的層與層之間的高度 (毫米) *	Roof 天台	Not Applicable 不適用	
Thickness of the floor slabs (excluding plaster) of each residential property (mm) 每個住宅物業的樓板的厚度 (不包括灰泥) (毫米)			

The internal areas of the residential properties on the upper floors will generally be slightly larger than those on the lower floors because of the reducing thickness of the structural walls on the upper floors. (This does not apply to the residential properties in the Development because the design of the Development does not involve reducing thickness of structural walls of residential properties on the upper floors and hence internal areas of those residential properties will not be increased.)

Notes

- The dimensions in the floor plans are all structural dimensions in millimetre.
 - Please refer to pages 27 and 28 of this Sales Brochure for remarks, legend of the terms and abbreviations shown in the floor plan.
- * Floor-to-Floor Height refers to the height between the top surface of the structural slab of a floor and the top surface of the structural slab of its immediate upper floor.

因住宅物業的較高樓層的結構牆的厚度遞減，較高樓層的內部面積，一般比較低樓層的內部面積稍大。(不適用於發展項目內的住宅物業，因為發展項目的設計是不牽涉較高樓層的住宅物業的結構牆的厚度遞減。因此，該等住宅物業的內部面積不會增加。)

備註

- 樓面平面圖所列之尺寸為以毫米標示之建築結構尺寸。
- 有關樓面平面圖中顯示之附註、名詞之簡稱之圖例，請參閱本售樓說明書第27頁至第28頁。

* 層與層之間的高度指該樓層之石屎地台面與上一層石屎地台面之高度距離。