

# FLOOR PLANS OF RESIDENTIAL PROPERTIES IN THE DEVELOPMENT

## 發展項目的住宅物業的樓面平面圖

### LEGEND FOR FLOOR PLAN

#### 平面圖圖例

A/C PLATFORM

BAL.

BAL. & U.P.

BATH

BR.

COMMON AREA DEDICATED FOR ACCESS TO  
MAINTENANCE OF COMMON DRAINAGE PIPE

DIN.

DN

DOGHOUSE

ELE

EL RISER

EMC

F.H.

HR AT H/L

H.R.

INACCESSIBLE FLAT ROOF (COMMON AREA)

LIFT

LIFT LOBBY

LIFT MACHINE RM.

LIFT PLATFORM

LIV.

LIV. / DIN.

MASTER BR.

OPEN KIT.

P.D.

PRIVATE FLAT ROOF

PRIVATE ROOF

TOP OF BAL.

TOP OF BAL. & U.P.

TOP OF U.P.

U.P.

UP

W.M.C.

= AIR CONDITIONER PLATFORM

= BALCONY

= BALCONY AND UTILITY PLATFORM

= BATHROOM

= BEDROOM

= COMMON AREA DEDICATED FOR ACCESS TO  
MAINTENANCE OF COMMON DRAINAGE PIPE

= DINING ROOM

= DOWN

= DOGHOUSE

= ELECTRICAL DUCT

= ELECTRICAL RISER

= ELECTRICAL METER CABINET

= FIRE HYDRANT

= HOSE REEL AT HIGH LEVEL

= HOSE REEL

= INACCESSIBLE FLAT ROOF (COMMON AREA)

= LIFT

= LIFT LOBBY

= LIFT MACHINE ROOM

= LIFT PLATFORM

= LIVING ROOM

= LIVING ROOM / DINING ROOM

= MASTER BEDROOM

= OPEN KITCHEN

= PIPE DUCT

= PRIVATE FLAT ROOF

= PRIVATE ROOF

= TOP OF BALCONY

= TOP OF BALCONY & UTILITY PLATFORM

= TOP OF UTILITY PLATFORM

= UTILITY PLATFORM

= UP

= WATER METER CABINET

= 空調機平台

= 露台

= 露台及工作平台

= 浴室

= 睡房

= 專為維修公用排水管而設的公用區域

= 飯廳

= 下

= 室外管道房

= 電線槽

= 電線立管

= 電錶櫃

= 消防栓

= 消防喉轆在上

= 消防喉轆

= 封閉平台 (公用空間)

= 升降機

= 電梯大堂

= 升降機機房

= 升降機平台

= 客廳

= 客廳 / 飯廳

= 主人睡房

= 開放式廚房

= 管道槽

= 私人平台

= 私人天台

= 露台頂部

= 露台及工作平台頂部

= 工作平台頂部

= 工作平台

= 上

= 水錶箱

Notes applicable to the floor plans of this section:

1. Common pipes exposed are located at / adjacent to the balcony and / or utility platform and / or flat roof and / or roof and / or air conditioner platform and / or external wall of some residential properties. For details, please refer to the latest approved building plans and / or approved drainage plans.
2. There may be sunken slabs and / or bulkheads and / or false ceilings for the installation of mechanical and electrical services at some of the residential properties.
3. The dimensions on the floor plans are all structural dimensions in millimeter.
4. The indications of fittings such as windows, door leafs, kitchen cabinets, drain points, shower cubicles and the door leafs thereof, sinks, water closets, washbasins etc. shown on the floor plans are indications of their approximate locations only and not indications of their actual sizes, locations, designs and shapes.

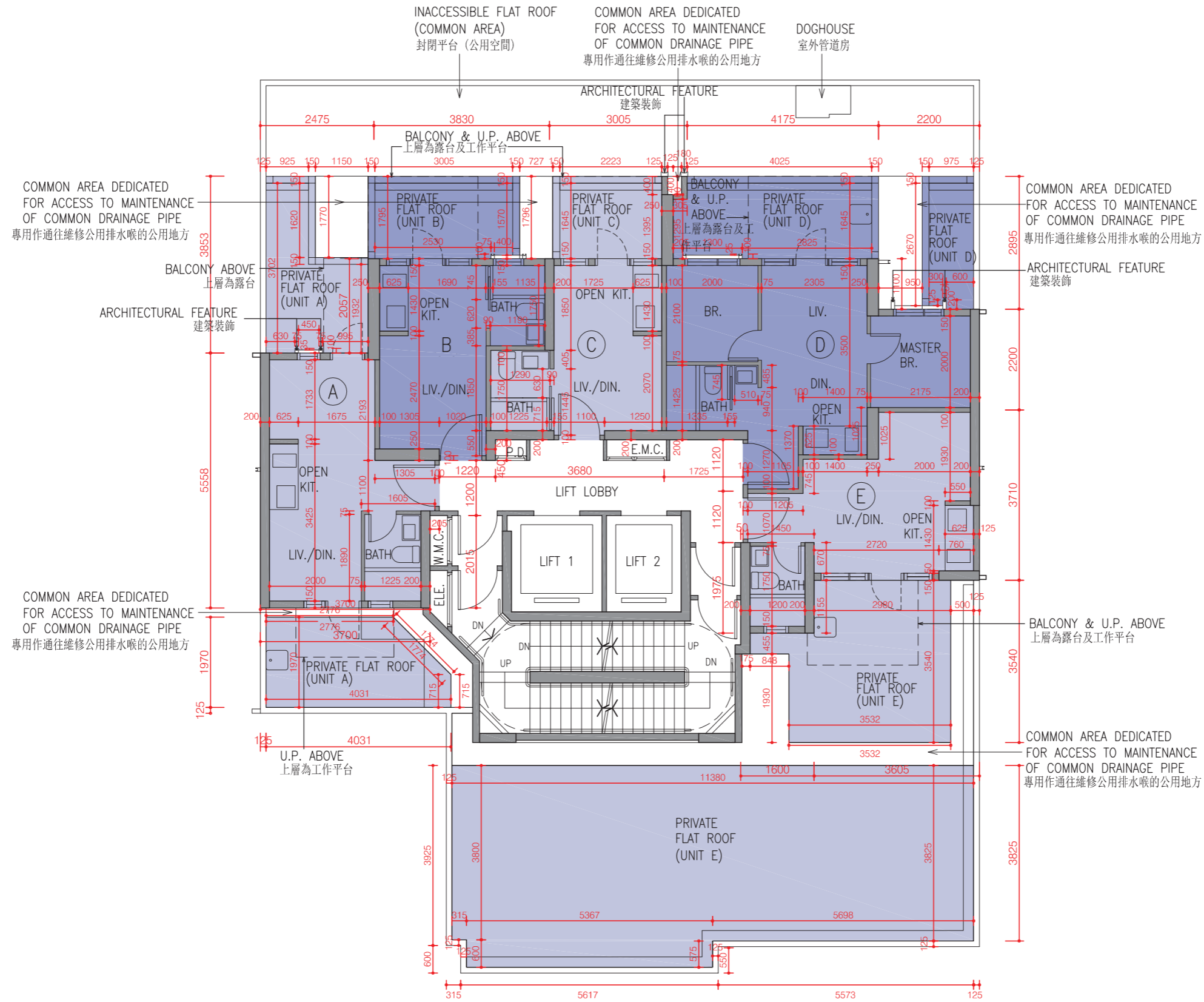
適用於本節各樓面平面圖之備註：

1. 部份住宅物業的露台及/或工作平台及/或平台及/或天台及/或冷氣機平台及/或外牆上/附近設有外露公用喉管。請查閱最新之批准建築圖則及/或批准排水圖則以了解詳情。
2. 部份住宅物業有跌級樓板及/或裝飾橫樑及/或假天花，以安裝機電設備。
3. 樓面平面圖所列之尺寸為以毫米標示之建築結構尺寸。
4. 樓面平面圖所示之裝置如窗、門葉、廚櫃、去水位、淋浴間及其門葉、洗滌盆、座廁、面盆等只供展示其大約位置而非展示其實際大小、位置、設計及形狀。

# FLOOR PLANS OF RESIDENTIAL PROPERTIES IN THE DEVELOPMENT

## 發展項目的住宅物業的樓面平面圖

### 2/F Floor Plan 二樓樓面平面圖



SCALE 比例 :



# FLOOR PLANS OF RESIDENTIAL PROPERTIES IN THE DEVELOPMENT

## 發展項目的住宅物業的樓面平面圖

2/F 二樓	Flats 單位				
	A	B	C	D	E
Thickness of Floor Slabs (excluding plaster) of each residential property (mm) 每個住宅物業的樓板(不包括灰泥的厚度)(毫米)	150	150	150	150, 180	150
Floor-to-Floor Height (note: refers to the height between the top surface of the structural slab of floor and the top surface of the structural slab of its immediate upper floor) of each residential property (mm) 每個住宅物業的層與層之間的高度(註：指該樓層之石屎地台面與上一層石屎地台面之高度距離)(毫米)	2840, 3100, 3150, 3170, 3500	2840, 3150, 3170, 3500	2840, 3150, 3170, 3500	2840, 3000, 3150, 3170, 3500	2840, 3150, 3170, 3200, 3500

The internal areas of the residential properties on the upper floors will generally be slightly larger than those on the lower floors because of the reducing thickness of the structural walls on the upper floors. (Note: This required statement under Section 10(2)(e) in Part 1 of Schedule 1 to the Residential Properties (First-hand Sales) Ordinance (Cap.621) is not applicable to the Development.)

**Remarks:**

- Please refer to the first page of the section "Floor Plans of Residential Properties in the Development" of this sales brochure for the legend of the terms and abbreviations for the floor plan of the residential properties.

因住宅物業的較高樓層的結構的厚度遞減，較高樓層的內部面積，一般比較低樓層的內部面積稍大。(註：此根據《一手住宅物業銷售條例》(第621章)附表1第1部第10(2)(e)條所規定的陳述並不適用於發展項目。)

**備註：**

- 以上樓面平面圖中顯示之名詞及簡稱，請參閱本售樓說明書「發展項目的住宅物業的樓面平面圖」一節首頁之說明。

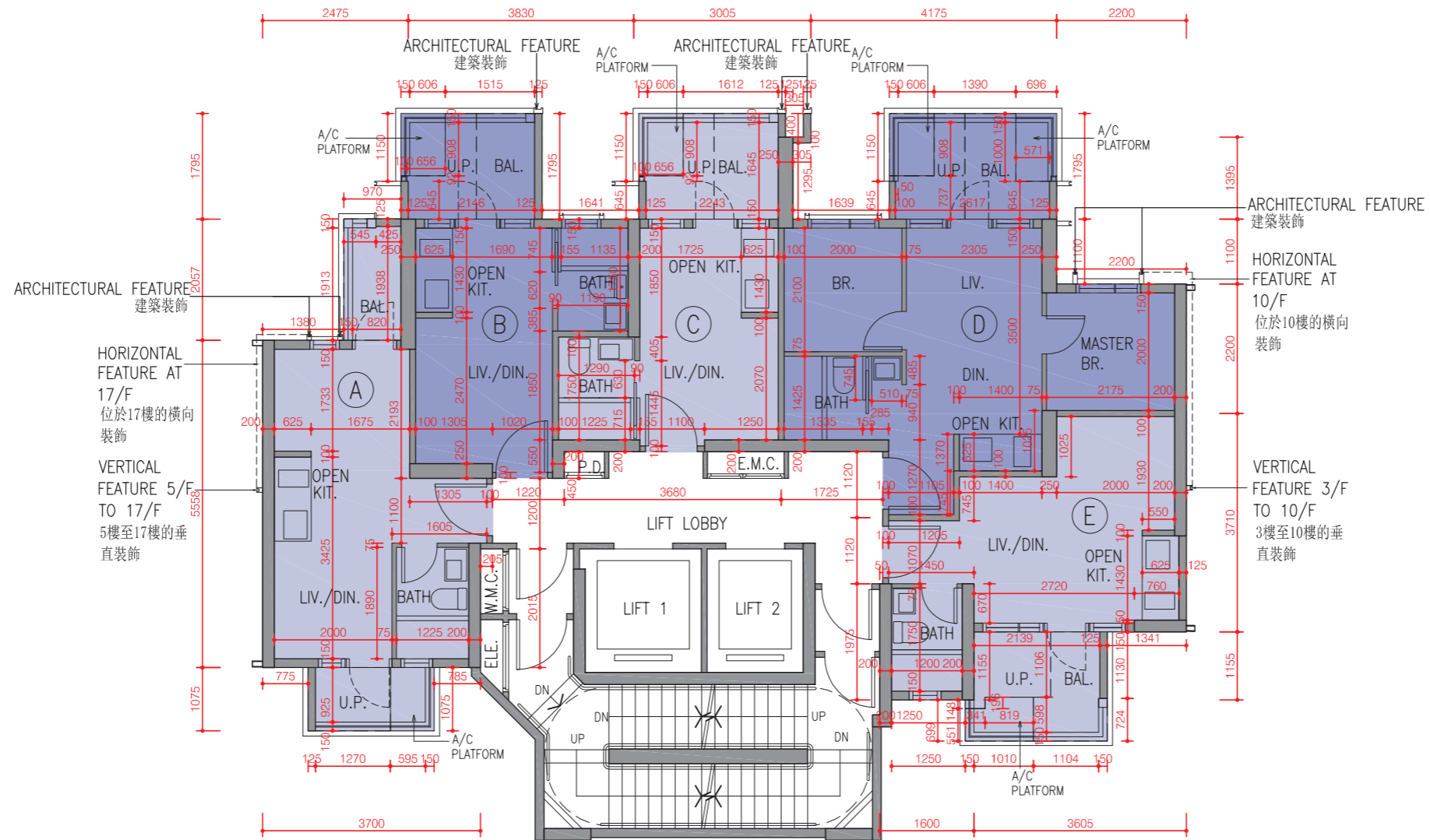
# FLOOR PLANS OF RESIDENTIAL PROPERTIES IN THE DEVELOPMENT

## 發展項目的住宅物業的樓面平面圖

### 3/F, 5-12/F & 15-22/F Floor Plan

三樓、五至十二樓及

十五至二十二樓樓面平面圖



SCALE 比例 :



# FLOOR PLANS OF RESIDENTIAL PROPERTIES IN THE DEVELOPMENT

## 發展項目的住宅物業的樓面平面圖

3/F, 5/F - 12/F, 15/F - 22/F 三樓、五樓至十二樓、十五樓至二十二樓	Flats 單位				
	A	B	C	D	E
Thickness of Floor Slabs (excluding plaster) of each residential property (mm) 每個住宅物業的樓板(不包括灰泥的厚度)(毫米)	125, 150	125, 150	125, 150	125, 150, 180	125, 150
Floor-to-Floor Height (note: refers to the height between the top surface of the structural slab of floor and the top surface of the structural slab of its immediate upper floor) of each residential property (mm) 每個住宅物業的層與層之間的高度(註：指該樓層之石屎地台面與上一層石屎地台面之高度距離)(毫米)	3150	3150	3150	3150	3150

The internal areas of the residential properties on the upper floors will generally be slightly larger than those on the lower floors because of the reducing thickness of the structural walls on the upper floors. (Note: This required statement under Section 10(2)(e) in Part 1 of Schedule 1 to the Residential Properties (First-hand Sales) Ordinance (Cap.621) is not applicable to the Development.)

#### Remarks:

- Please refer to the first page of the section "Floor Plans of Residential Properties in the Development" of this sales brochure for the legend of the terms and abbreviations for the floor plan of the residential properties.

因住宅物業的較高樓層的結構的厚度遞減，較高樓層的內部面積，一般比較低樓層的內部面積稍大。(註：此根據《一手住宅物業銷售條例》(第621章)附表1第1部第10(2)(e)條所規定的陳述並不適用於發展項目。)

#### 備註：

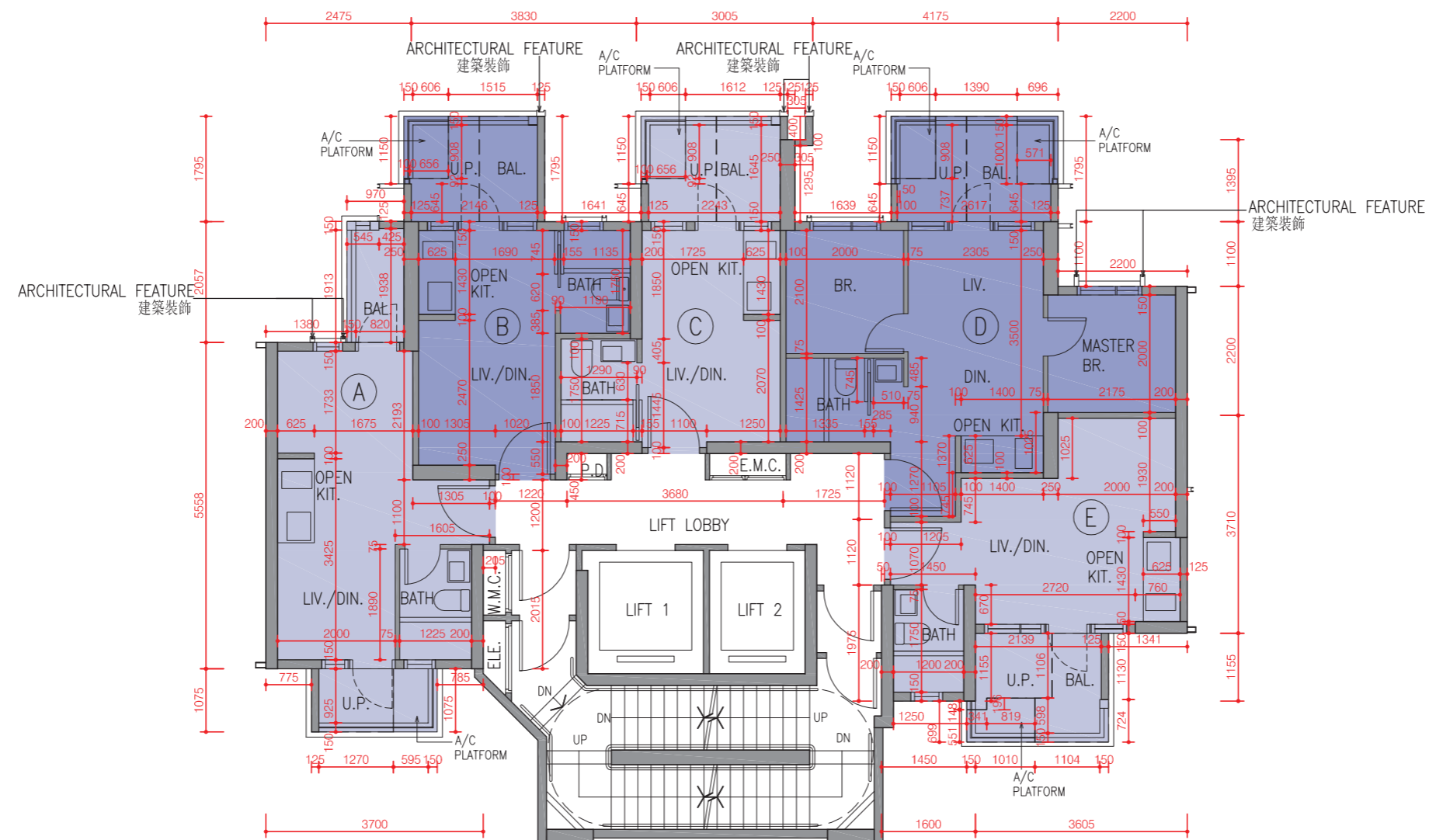
- 以上樓面平面圖中顯示之名詞及簡稱，請參閱本售樓說明書「發展項目的住宅物業的樓面平面圖」一節首頁之說明。

# FLOOR PLANS OF RESIDENTIAL PROPERTIES IN THE DEVELOPMENT

## 發展項目的住宅物業的樓面平面圖

### 23/F Floor Plan

### 二十三樓樓面平面圖



SCALE 比例 :



# FLOOR PLANS OF RESIDENTIAL PROPERTIES IN THE DEVELOPMENT

## 發展項目的住宅物業的樓面平面圖

23/F 二十三樓	Flats 單位				
	A	B	C	D	E
Thickness of Floor Slabs (excluding plaster) of each residential property (mm) 每個住宅物業的樓板(不包括灰泥的厚度)(毫米)	125, 150, 180	125, 150	125, 150	125, 150, 180	125, 150
Floor-to-Floor Height (note: refers to the height between the top surface of the structural slab of floor and the top surface of the structural slab of its immediate upper floor) of each residential property (mm) 每個住宅物業的層與層之間的高度(註：指該樓層之石屎地台面與上一層石屎地台面之高度距離)(毫米)	3150, 3200, 3400, 3530	3150, 3200, 3530	3150, 3200, 3530	3150, 3200, 3450, 3530	3150, 3200, 3350, 3530

The internal areas of the residential properties on the upper floors will generally be slightly larger than those on the lower floors because of the reducing thickness of the structural walls on the upper floors. (Note: This required statement under Section 10(2)(e) in Part 1 of Schedule 1 to the Residential Properties (First-hand Sales) Ordinance (Cap.621) is not applicable to the Development.)

**Remarks:**

- Please refer to the first page of the section "Floor Plans of Residential Properties in the Development" of this sales brochure for the legend of the terms and abbreviations for the floor plan of the residential properties.

因住宅物業的較高樓層的結構的厚度遞減，較高樓層的內部面積，一般比較低樓層的內部面積稍大。(註：此根據《一手住宅物業銷售條例》(第621章)附表1第1部第10(2)(e)條所規定的陳述並不適用於發展項目。)

**備註：**

- 以上樓面平面圖中顯示之名詞及簡稱，請參閱本售樓說明書「發展項目的住宅物業的樓面平面圖」一節首頁之說明。



# FLOOR PLANS OF RESIDENTIAL PROPERTIES IN THE DEVELOPMENT

## 發展項目的住宅物業的樓面平面圖

Roof 天台	Flats 單位				
	A	B	C	D	E
Thickness of Floor Slabs (excluding plaster) of each residential property (mm) 每個住宅物業的樓板(不包括灰泥的厚度)(毫米)	N/A 不適用	N/A 不適用	N/A 不適用	N/A 不適用	N/A 不適用
Floor-to-Floor Height (note: refers to the height between the top surface of the structural slab of floor and the top surface of the structural slab of its immediate upper floor) of each residential property (mm) 每個住宅物業的層與層之間的高度(註：指該樓層之石屎地台面與上一層石屎地台面之高度距離)(毫米)	N/A 不適用	N/A 不適用	N/A 不適用	N/A 不適用	N/A 不適用

The internal areas of the residential properties on the upper floors will generally be slightly larger than those on the lower floors because of the reducing thickness of the structural walls on the upper floors. (Note: This required statement under Section 10(2)(e) in Part 1 of Schedule 1 to the Residential Properties (First-hand Sales) Ordinance (Cap.621) is not applicable to the Development.)

**Remarks:**

- Please refer to the first page of the section "Floor Plans of Residential Properties in the Development" of this sales brochure for the legend of the terms and abbreviations for the floor plan of the residential properties.

因住宅物業的較高樓層的結構的厚度遞減，較高樓層的內部面積，一般比較低樓層的內部面積稍大。(註：此根據《一手住宅物業銷售條例》(第621章)附表1第1部第10(2)(e)條所規定的陳述並不適用於發展項目。)

**備註：**

- 以上樓面平面圖中顯示之名詞及簡稱，請參閱本售樓說明書「發展項目的住宅物業的樓面平面圖」一節首頁之說明。