

FLOOR PLANS OF RESIDENTIAL PROPERTIES IN THE PHASE

期數的住宅物業的樓面平面圖

LEGEND OF THE TERMS AND ABBREVIATIONS USED ON FLOOR PLANS

樓面平面圖中所使用之名詞及簡稱之圖例

A/C HOOD AT H/L	= AIR-CONDITIONER HOOD AT HIGH LEVEL	位於高位的冷氣機台
ACCESS DOOR & CL FOR MAINTENANCE	= ACCESS DOOR AND CAT LADDER FOR MAINTENANCE	供維修使用的檢修門及豎梯
AC PLANT ROOM/ A/C PLANT ROOM	= AIR-CONDITIONER PLANT ROOM	冷氣機機房
ACP	= AIR-CONDITIONER PLATFORM	冷氣機平台
AD RM	= AIR DUCT ROOM	風槽房
AF	= ARCHITECTURAL FEATURE	建築裝飾
AF ABOVE	= ARCHITECTURAL FEATURE ABOVE	建築裝飾置上
ARCHITECTURAL FEATURE AT X/F ONLY	= ARCHITECTURAL FEATURE AT X/F ONLY	建築裝飾只於X樓
AUTO-CLOSING DOOR	= AUTO-CLOSING DOOR	自動關閉式門
AP#	= ACCESS PANEL	檢修門
AP AT 47/F ONLY	= ACCESS PANEL AT 47/F ONLY	檢修門只於47樓
AT X/F	= AT X/F	於x樓
AW	= ACOUSTIC WINDOW (BAFFLE TYPE)	減音窗(擋音式)
BA1	= BATHROOM 1	浴室1
BA2	= BATHROOM 2	浴室2
BA3	= BATHROOM 3	浴室3
BAL	= BALCONY	露台
BR1	= BEDROOM 1	睡房1
BR2	= BEDROOM 2	睡房2
BR3	= BEDROOM 3	睡房3
BUILDING LINE ABOVE (X/F)	= BUILDING LINE ABOVE (AT X/F)	建築物線置上(於X樓)
CD	= CABLE DUCT	電線槽
CL	= CAT LADDER	豎梯
CLADDING	= CLADDING	覆蓋層板
COMMON FLAT ROOF	= COMMON FLAT ROOF	公用平台
COMMON ROOF	= COMMON ROOF	公用天台
CONCRETE PLINTH	= CONCRETE PLINTH	混凝土平台
CORR	= CORRIDOR	走廊
D	= DOWN	下
DOG HOUSE	= DOG HOUSE	室外管道檢修井
EAD	= EXHAUST AIR DUCT	排氣槽
EAD/ARD	= EXHAUST AIR DUCT OR AIR RETURN DUCT	排氣槽或回風槽
EL ROOM	= ELECTRICAL ROOM	電氣房
ELV	= EXTRA LOW VOLTAGE DUCT	特低電壓槽
EMC	= ELECTRIC METER CABINET	電錶櫃
EMR	= ELECTRIC METER ROOM	電錶房
EXHAUST DUCT AT BELOW FOR PIPE WELL VENTILATION	= EXHAUST DUCT AT BELOW FOR PIPE WELL VENTILATION	供通風使用的排氣槽置下
F. LIFT LOBBY	= FIREMAN'S LIFT LOBBY	消防升降機大堂
FAN RM	= FAN ROOM	風櫃房
FENCE WALL	= FENCE WALL	圍牆
FILTRATION PLANT BELOW DECK	= FILTRATION PLANT BELOW DECK	濾水設施置於甲板下
FIXED WINDOW AT H/L (FOR A/C)	= FIXED WINDOW AT HIGH LEVEL (FOR AIR-CONDITIONER)	位於高位的固定窗戶(供冷氣機使用的)
FLAT ROOF	= FLAT ROOF	平台
FLOOR ACCESS PANEL FOR DRAINAGE PIPES	= FLOOR ACCESS PANEL FOR DRAINAGE PIPES	供排水管的地面檢修門
GLASS BALUSTRADE	= GLASS BALUSTRADE	玻璃欄杆
GLASS PARAPET	= GLASS PARAPET	玻璃欄杆圍牆
HR	= HOSE REEL	消防喉轆
HR AT H/L	= HOSE REEL AT HIGH LEVEL	位於高位的消防喉轆

FLOOR PLANS OF RESIDENTIAL PROPERTIES IN THE PHASE

期數的住宅物業的樓面平面圖

INACCESSIBLE FLAT ROOF	= INACCESSIBLE FLAT ROOF	不可到達的平台
INACCESSIBLE ROOF	= INACCESSIBLE ROOF	不可到達的天台
JACUZZI	= JACUZZI	按摩浴池
KIT	= KITCHEN	廚房
KITCHEN LOUVRE AT 31/F	= KITCHEN LOUVRE AT 31/F	位於31樓廚房百葉
LAV	= LAVATORY	洗手間
LIFT	= LIFT	升降機
LIFT LOBBY	= LIFT LOBBY	升降機大堂
LIFT OVERRUN	= LIFT OVERRUN	升降機緩衝
LIFT SHAFT	= LIFT SHAFT	升降機槽
LIV/DIN	= LIVING ROOM AND DINING ROOM	客廳及飯廳
LMR	= LIFT MACHINE ROOM	升降機機房
LOUVRE & ALUM WIND GUARD	= LOUVRE AND ALUMINIUM WIND GUARD	百葉及鋁百葉擋風板
LOUVRE & ALUM. WIND GUARD AT E&M/F	= LOUVRE AND ALUMINIUM WIND GUARD AT ELECTRICAL AND MECHANICAL FLOOR	位於機電層百葉及鋁百葉擋風板
LOUVRE AT E&M/F	= LOUVRE AT ELECTRICAL AND MECHANICAL FLOOR	位於機電層百葉
LW	= LIGHT WELL	採光井
LW FLAT ROOF	= LIGHT WELL FLAT ROOF	採光井平台
MAINTENANCE FLAT ROOF	= MAINTENANCE FLAT ROOF	供維修使用平台
METAL GRILLE	= METAL GRILLE	金屬格柵
METAL LOUVRE W/ WIND GUARD AT X/F/ METAL LOUVRE WITH WIND GUARD AT X/F ONLY	= METAL LOUVRE WITH WIND GUARD AT X/F ONLY	金屬百葉擋風板只於X樓
MBA	= MASTER BATHROOM	主人浴室
MBR	= MASTER BEDROOM	主人睡房
ML AT H/L	= METAL LOUVRE AT HIGH LEVEL	位於高位的金屬百葉
OKIT	= OPEN KITCHEN	開放式廚房
PANTRY	= PANTRY	備餐間
PD	= PIPE DUCT	管道槽
PIPE WELL	= PIPE WELL	管道豎井
PLANTER	= PLANTER	花槽
POOL	= POOL	游泳池
POOL DECK	= POOL DECK	游泳池甲板
POWDER	= POWDER ROOM	化妝間
PRIVATE FLAT ROOF	= PRIVATE FLAT ROOF	私人平台
PRIVATE LIFT	= PRIVATE LIFT	私人升降機
PRIVATE LIFT LOBBY	= PRIVATE LIFT LOBBY	私人升降機大堂
PRIVATE POOL	= PRIVATE POOL	私人游泳池
PRIVATE ROOF	= PRIVATE ROOF	私人天台
PW	= PIPE WELL	管道豎井
RC CURB	= REINFORCED CONCRETE CURB	混凝土壘
RC PARAPET	= REINFORCED CONCRETE PARAPET	混凝土圍牆
RC PLATFORM	= REINFORCED CONCRETE PLATFORM	混凝土平台
RC PLINTH	= REINFORCED CONCRETE PLINTH	混凝土機台
RSMRR	= REFUSE STORAGE AND MATERIAL RECOVERY ROOM	垃圾及物料回收房
RSMRR LOUVRE AT 31/F	= REFUSE STORAGE AND MATERIAL RECOVERY ROOM LOUVRE AT 31/F	位於31樓垃圾及物料回收房百葉
SELF-CLOSING DOOR	= SELF-CLOSING DOOR	自動關閉式門
SINK	= SINK	洗手盆
STO	= STORE ROOM	儲物房
STUDY	= STUDY ROOM	書房
TRAP DOOR	= TRAP DOOR	活板門

FLOOR PLANS OF RESIDENTIAL PROPERTIES IN THE PHASE

期數的住宅物業的樓面平面圖

TOP OF BAL
TOWER X BUILDING FACADE LINE
U
UP
UPPER PART OF LMR
UTL
VOID
WINDOW EAVES
WMC

*

~
@

= TOP OF BALCONY
= TOWER X BUILDING FACADE LINE
= UP
= UTILITY PLATFORM
= UPPER PART OF LIFT MACHINE ROOM
= UTILITY ROOM
= VOID
= WINDOW EAVES
= WATER METER CABINET
= ACOUSTIC WINDOW (BAFFLE TYPE)
= BALCONY WITH AUTO-CLOSING DOOR / FIXED GLAZING WITH OR WITHOUT MAINTENANCE WINDOW
= BAFFLE TYPE ACOUSTIC DOOR
= TYPE A ACOUSTIC BALCONY
= TYPE B ACOUSTIC BALCONY

露台上蓋
第X座建築物界線
上
工作平台
升降機機房上層
工作間
中空
窗簷
水錶櫃
減音窗(擋音式)
露台連自動關閉式門/固定窗戶連或不連維修窗
擋音式減音門
減音露台A
減音露台B

Notes:

1. There may be architectural features on external walls of some floors.
2. Common pipes exposed and / or enclosed in cladding are located at / adjacent to balcony and / or flat roof and / or roof and / or utility platform and / or area for air-conditioning and / or external wall of some residential units.
3. There are sunken slabs and/or ceiling bulkheads and/or false ceiling at living rooms, dining rooms, bedrooms, utility rooms, corridors, bathrooms, store rooms, lavatories, open kitchens and kitchens of some residential units for the air-conditioning system and/or mechanical and electrical services. There are exposed pipes or ductings for air-conditioning system and/or mechanical and electrical services within some utility rooms.
4. Balconies and utility platforms are non-enclosed areas.
5. Symbols of fittings and fitments shown on the floor plans, such as bathtubs, sink, water closets, shower, sink counter etc, are architectural symbols extracted from the latest approved general building plans and are for general indication only.

備註:

1. 部分樓層外牆設有建築裝飾。
2. 部分住宅單位的露台及/或平台及/或天台及/或工作平台及/或冷氣機範圍及/或外牆或其鄰近地方設有外露及/或藏於外牆覆蓋層內之公用喉管。
3. 部分住宅單位的客廳、飯廳、睡房、工作間、走廊、浴室、儲物房、洗手間、開放式廚房以及廚房設有跌級樓板及/或假陣及/或假天花，用以裝置冷氣系統及/或機電設備。部分工作間內設有冷氣系統及/或機電設備之外露喉管或管道槽。
4. 露台及工作平台為不可封閉的地方。
5. 樓面平面圖上所顯示的形象裝置符號，例如浴缸、洗滌盆、坐廁、淋浴間、洗滌盆櫃等乃摘自最新的經批准的建築圖則的建築圖示，只作一般性標誌。

FLOOR PLANS OF RESIDENTIAL PROPERTIES IN THE PHASE 期數的住宅物業的樓面平面圖

(This page is left blank intentionally. 此頁保留空白。)

FLOOR PLANS OF RESIDENTIAL PROPERTIES IN THE PHASE

期數的住宅物業的樓面平面圖

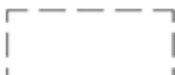
Block Name 大廈名稱	Floor 樓層	Flat 單位	The floor-to-floor height of each residential property (mm) 每個住宅物業的層與層之間的高度(毫米)	The thickness of the floor slabs (excluding plaster) of each residential property (mm) 每個住宅物業的樓板(不包括灰泥)的厚度(毫米)
Tower 1 (Elite Zone) 第1座 (Elite Zone)	5/F 5樓	A1	2850, 2900, 2950, 3200	175, 200, 300
		A2	2850, 2950, 3200	150, 200
		A3	2850, 2950, 3050, 3200	150, 175, 200
		A5	2850, 2950, 3200	150, 200
		B1	2850, 2950, 3200	175, 200
		B2	2850, 2950, 3200	175, 200
		B3	2850, 2950, 3200	150, 200
		B5	2850, 2950, 3200	175, 200
		B6	2850, 2950, 3200	175, 200
		B8	2850, 2900, 2950, 3050, 3200	150, 175, 200
		B9	2850, 2950, 3200	175, 200
B10	2850, 2950, 3200	150, 200		

The internal areas of the residential properties on the upper floors will generally be slightly larger than those on the lower floors because of the reducing thickness of the structural walls on the upper floors. (This does not apply to the residential properties in the Phase because the design of the Phase does not involve reducing thickness of structural walls of residential properties on the upper floors.)

因住宅物業的較高樓層的結構牆的厚度遞減，較高樓層的內部面積，一般比較低樓層的內部面積稍大。(不適用於期數內的住宅物業，因期數的設計並不牽涉住宅物業的較高樓層的結構牆的厚度遞減。)


Notes:

- The dimensions of the floor plan are all structural dimensions in millimetres.
- Please refer to Pages AL001-003 of this sales brochure for the legend of the terms and abbreviations shown on the floor plans and notes that are applicable thereto.
- Dotted line in the format shown below delineates the extent of open kitchen area (if any) in a residential unit.

 Extent of open kitchen area

備註:

- 樓面平面圖所列之尺寸為以毫米標示之建築結構尺寸。
- 樓面平面圖中顯示之名詞及簡稱之圖例及其適用的備註，請參閱本售樓說明書第AL001至003頁。
- 住宅單位內的開放式廚房範圍（如有）以下列格式之虛綫勾畫。

 開放式廚房範圍

FLOOR PLANS OF RESIDENTIAL PROPERTIES IN THE PHASE

期數的住宅物業的樓面平面圖

Tower 1 (Elite Zone) 5/F 第1座 (Elite Zone) 5樓



FLOOR PLANS OF RESIDENTIAL PROPERTIES IN THE PHASE

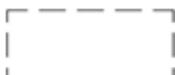
期數的住宅物業的樓面平面圖

Block Name 大廈名稱	Floor 樓層	Flat 單位	The floor-to-floor height of each residential property (mm) 每個住宅物業的層與層之間的高度(毫米)	The thickness of the floor slabs (excluding plaster) of each residential property (mm) 每個住宅物業的樓板(不包括灰泥)的厚度(毫米)
Tower 1 (Elite Zone) 第1座 (Elite Zone)	6/F-12/F, 15/F-23/F & 25/F-27/F 6樓至12樓、15樓至23樓 及25樓至27樓	A1	2850, 2900, 2950, 3200	175, 200, 300
		A2	2850, 2950, 3200	150, 200
		A3	2850, 2950, 3050, 3200	150, 175, 200
		A5	2850, 2950, 3200	150, 200
		B1	2850, 2950, 3200	175, 200
		B2	2850, 2950, 3200	175, 200
		B3	2850, 2950, 3200	150, 200
		B5	2850, 2950, 3200	175, 200
		B6	2850, 2950, 3200	175, 200
		B8	2850, 2900, 2950, 3050, 3200	150, 175, 200
		B9	2850, 2950, 3200	175, 200
B10	2850, 2950, 3200	150, 200		

The internal areas of the residential properties on the upper floors will generally be slightly larger than those on the lower floors because of the reducing thickness of the structural walls on the upper floors. (This does not apply to the residential properties in the Phase because the design of the Phase does not involve reducing thickness of structural walls of residential properties on the upper floors.)
因住宅物業的較高樓層的結構牆的厚度遞減，較高樓層的內部面積，一般比較低樓層的內部面積稍大。(不適用於期數內的住宅物業，因期數的設計並不牽涉住宅物業的較高樓層的結構牆的厚度遞減。)


Notes:

- The dimensions of the floor plan are all structural dimensions in millimetres.
- Please refer to Pages AL001-003 of this sales brochure for the legend of the terms and abbreviations shown on the floor plans and notes that are applicable thereto.
- Dotted line in the format shown below delineates the extent of open kitchen area (if any) in a residential unit.

 Extent of open kitchen area

備註:

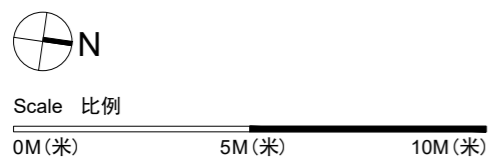
- 樓面平面圖所列之尺寸為以毫米標示之建築結構尺寸。
- 樓面平面圖中顯示之名詞及簡稱之圖例及其適用的備註，請參閱本售樓說明書第AL001至003頁。
- 住宅單位內的開放式廚房範圍（如有）以下列格式之虛線勾畫。

 開放式廚房範圍

FLOOR PLANS OF RESIDENTIAL PROPERTIES IN THE PHASE

期數的住宅物業的樓面平面圖

Tower 1 (Elite Zone) 6/F-12/F, 15/F-23/F, 25/F-27/F
 第1座 (Elite Zone) 6樓至12樓、
 15樓至23樓、
 25樓至27樓



FLOOR PLANS OF RESIDENTIAL PROPERTIES IN THE PHASE


期數的住宅物業的樓面平面圖

Block Name 大廈名稱	Floor 樓層	Flat 單位	The floor-to-floor height of each residential property (mm) 每個住宅物業的層與層之間的高度(毫米)	The thickness of the floor slabs (excluding plaster) of each residential property (mm) 每個住宅物業的樓板(不包括灰泥)的厚度(毫米)
Tower 1 (Elite Zone) 第1座 (Elite Zone)	28/F 28樓	A1	3500	200
		A2	3500	200
		A3	3500	200
		A5	3500	200
		B1	3500	200
		B2	3500	200
		B3	3500	200
		B5	3500	200
		B6	3500	200
		B8	3500	200
		B9	3500	200
		B10	3500	200

The internal areas of the residential properties on the upper floors will generally be slightly larger than those on the lower floors because of the reducing thickness of the structural walls on the upper floors. (This does not apply to the residential properties in the Phase because the design of the Phase does not involve reducing thickness of structural walls of residential properties on the upper floors.)
因住宅物業的較高樓層的結構牆的厚度遞減，較高樓層的內部面積，一般比較低樓層的內部面積稍大。(不適用於期數內的住宅物業，因期數的設計並不牽涉住宅物業的較高樓層的結構牆的厚度遞減。)


Notes:

- The dimensions of the floor plan are all structural dimensions in millimetres.
- Please refer to Pages AL001-003 of this sales brochure for the legend of the terms and abbreviations shown on the floor plans and notes that are applicable thereto.
- Dotted line in the format shown below delineates the extent of open kitchen area (if any) in a residential unit.

 Extent of open kitchen area

備註:

- 樓面平面圖所列之尺寸為以毫米標示之建築結構尺寸。
- 樓面平面圖中顯示之名詞及簡稱之圖例及其適用的備註，請參閱本售樓說明書第AL001至003頁。
- 住宅單位內的開放式廚房範圍(如有)以下列格式之虛綫勾畫。

 開放式廚房範圍

FLOOR PLANS OF RESIDENTIAL PROPERTIES IN THE PHASE

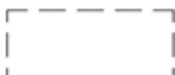
期數的住宅物業的樓面平面圖

Block Name 大廈名稱	Floor 樓層	Flat 單位	The floor-to-floor height of each residential property (mm) 每個住宅物業的層與層之間的高度(毫米)	The thickness of the floor slabs (excluding plaster) of each residential property (mm) 每個住宅物業的樓板(不包括灰泥)的厚度(毫米)
Tower 2 (Elite Zone) 第2座 (Elite Zone)	5/F 5樓	A1	2900, 2950, 3200	175, 200, 225
		A2	2950, 3200	150, 175, 200
		A3	2850, 2950, 3200	150, 175, 200
		A5	2850, 2950, 3200	150, 200
		B1	2850, 2950, 3200	150, 200, 225
		B2	2850, 2950, 3200	175, 200
		B3	2850, 2950, 3200	175, 200
		B5	2850, 2950, 3200	175, 200
		B6	2850, 2950, 3200	175, 200
		B8	2850, 2950, 3200	150, 200

The internal areas of the residential properties on the upper floors will generally be slightly larger than those on the lower floors because of the reducing thickness of the structural walls on the upper floors. (This does not apply to the residential properties in the Phase because the design of the Phase does not involve reducing thickness of structural walls of residential properties on the upper floors.)
因住宅物業的較高樓層的結構牆的厚度遞減，較高樓層的內部面積，一般比較低樓層的內部面積稍大。(不適用於期數內的住宅物業，因期數的設計並不牽涉住宅物業的較高樓層的結構牆的厚度遞減。)


Notes:

- The dimensions of the floor plan are all structural dimensions in millimetres.
- Please refer to Pages AL001-003 of this sales brochure for the legend of the terms and abbreviations shown on the floor plans and notes that are applicable thereto.
- Dotted line in the format shown below delineates the extent of open kitchen area (if any) in a residential unit.

 Extent of open kitchen area

備註:

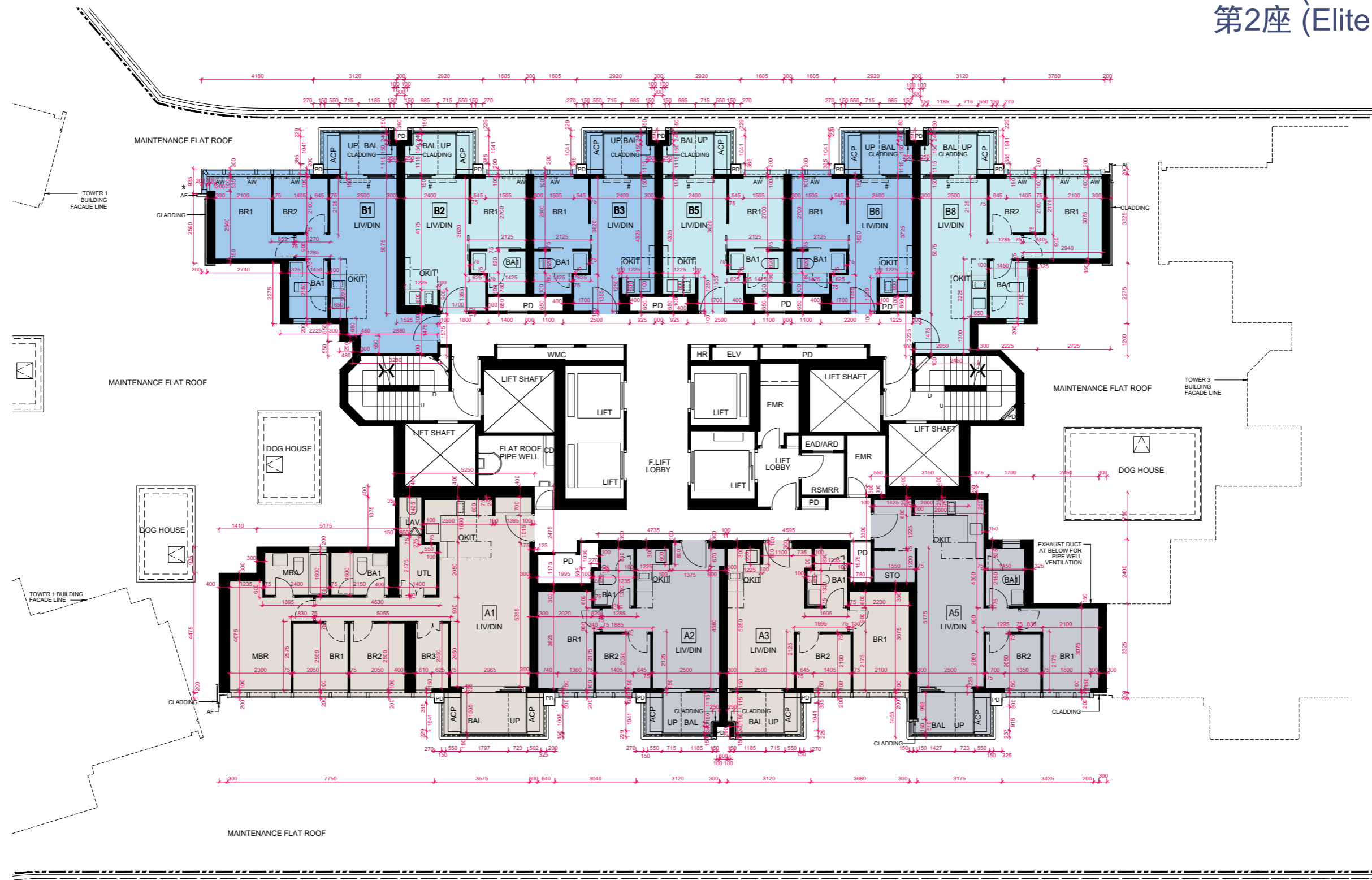
- 樓面平面圖所列之尺寸為以毫米標示之建築結構尺寸。
- 樓面平面圖中顯示之名詞及簡稱之圖例及其適用的備註，請參閱本售樓說明書第AL001至003頁。
- 住宅單位內的開放式廚房範圍（如有）以下列格式之虛綫勾畫。

 開放式廚房範圍

FLOOR PLANS OF RESIDENTIAL PROPERTIES IN THE PHASE

期數的住宅物業的樓面平面圖

Tower 2 (Elite Zone) 5/F 第2座 (Elite Zone) 5樓



Scale 比例

0M(米) 5M(米) 10M(米)

FLOOR PLANS OF RESIDENTIAL PROPERTIES IN THE PHASE


期數的住宅物業的樓面平面圖

Block Name 大廈名稱	Floor 樓層	Flat 單位	The floor-to-floor height of each residential property (mm) 每個住宅物業的層與層之間的高度(毫米)	The thickness of the floor slabs (excluding plaster) of each residential property (mm) 每個住宅物業的樓板(不包括灰泥)的厚度(毫米)
Tower 2 (Elite Zone) 第2座 (Elite Zone)	6/F-12/F, 15/F-23/F & 25/F-27/F 6樓至12樓、15樓至23樓 及25樓至27樓	A1	2900, 2950, 3200	175, 200, 225
		A2	2950, 3200	150, 175, 200
		A3	2850, 2950, 3200	150, 175, 200
		A5	2850, 2950, 3200	150, 200
		B1	2850, 2950, 3200	150, 200, 225
		B2	2850, 2950, 3200	175, 200
		B3	2850, 2950, 3200	175, 200
		B5	2850, 2950, 3200	175, 200
		B6	2850, 2950, 3200	175, 200
		B8	2850, 2950, 3200	150, 200

The internal areas of the residential properties on the upper floors will generally be slightly larger than those on the lower floors because of the reducing thickness of the structural walls on the upper floors. (This does not apply to the residential properties in the Phase because the design of the Phase does not involve reducing thickness of structural walls of residential properties on the upper floors.)
因住宅物業的較高樓層的結構牆的厚度遞減，較高樓層的內部面積，一般比較低樓層的內部面積稍大。(不適用於期數內的住宅物業，因期數的設計並不牽涉住宅物業的較高樓層的結構牆的厚度遞減。)


Notes:

- The dimensions of the floor plan are all structural dimensions in millimetres.
- Please refer to Pages AL001-003 of this sales brochure for the legend of the terms and abbreviations shown on the floor plans and notes that are applicable thereto.
- Dotted line in the format shown below delineates the extent of open kitchen area (if any) in a residential unit.

 Extent of open kitchen area

備註:

- 樓面平面圖所列之尺寸為以毫米標示之建築結構尺寸。
- 樓面平面圖中顯示之名詞及簡稱之圖例及其適用的備註，請參閱本售樓說明書第AL001至003頁。
- 住宅單位內的開放式廚房範圍（如有）以下列格式之虛綫勾畫。

 開放式廚房範圍

FLOOR PLANS OF RESIDENTIAL PROPERTIES IN THE PHASE

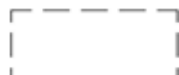
期數的住宅物業的樓面平面圖

Block Name 大廈名稱	Floor 樓層	Flat 單位	The floor-to-floor height of each residential property (mm) 每個住宅物業的層與層之間的高度(毫米)	The thickness of the floor slabs (excluding plaster) of each residential property (mm) 每個住宅物業的樓板(不包括灰泥)的厚度(毫米)
Tower 2 (Elite Zone) 第2座 (Elite Zone)	28/F 28樓	A1	3500	200
		A2	3500	200
		A3	3500	200
		A5	3500	200
		B1	3500	200
		B2	3500	200
		B3	3500	200
		B5	3500	200
		B6	3500	200
		B8	3500	200

The internal areas of the residential properties on the upper floors will generally be slightly larger than those on the lower floors because of the reducing thickness of the structural walls on the upper floors. (This does not apply to the residential properties in the Phase because the design of the Phase does not involve reducing thickness of structural walls of residential properties on the upper floors.)
因住宅物業的較高樓層的結構牆的厚度遞減，較高樓層的內部面積，一般比較低樓層的內部面積稍大。(不適用於期數內的住宅物業，因期數的設計並不牽涉住宅物業的較高樓層的結構牆的厚度遞減。)


Notes:

- The dimensions of the floor plan are all structural dimensions in millimetres.
- Please refer to Pages AL001-003 of this sales brochure for the legend of the terms and abbreviations shown on the floor plans and notes that are applicable thereto.
- Dotted line in the format shown below delineates the extent of open kitchen area (if any) in a residential unit.

 Extent of open kitchen area

備註:

- 樓面平面圖所列之尺寸為以毫米標示之建築結構尺寸。
- 樓面平面圖中顯示之名詞及簡稱之圖例及其適用的備註，請參閱本售樓說明書第AL001至003頁。
- 住宅單位內的開放式廚房範圍（如有）以下列格式之虛線勾畫。

 開放式廚房範圍

FLOOR PLANS OF RESIDENTIAL PROPERTIES IN THE PHASE

期數的住宅物業的樓面平面圖

Tower 2 (Elite Zone) 28/F

第2座 (Elite Zone) 28樓



Scale 比例

0M(米) 5M(米) 10M(米)

FLOOR PLANS OF RESIDENTIAL PROPERTIES IN THE PHASE

期數的住宅物業的樓面平面圖

Block Name 大廈名稱	Floor 樓層	Flat 單位	The floor-to-floor height of each residential property (mm) 每個住宅物業的層與層之間的高度(毫米)	The thickness of the floor slabs (excluding plaster) of each residential property (mm) 每個住宅物業的樓板(不包括灰泥)的厚度(毫米)
Tower 1 (Sky Tower) 第1座 (Sky Tower)	32/F 32樓	A	3050, 3100, 3150, 3250, 3500	150, 175, 200, 225, 250
		B	3050, 3100, 3150, 3200, 3250, 3350, 3500	150, 175, 200, 225, 250
		C	3100, 3150, 3200, 3250, 3350, 3500	150, 175, 200
		D	3100, 3150, 3250, 3500	150, 200, 250

The internal areas of the residential properties on the upper floors will generally be slightly larger than those on the lower floors because of the reducing thickness of the structural walls on the upper floors. (This does not apply to the residential properties in the Phase because the design of the Phase does not involve reducing thickness of structural walls of residential properties on the upper floors.)
因住宅物業的較高樓層的結構牆的厚度遞減，較高樓層的內部面積，一般比較低樓層的內部面積稍大。(不適用於期數內的住宅物業，因期數的設計並不牽涉住宅物業的較高樓層的結構牆的厚度遞減。)

Notes:

- The dimensions of the floor plan are all structural dimensions in millimetres.
- Please refer to Pages AL001-003 of this sales brochure for the legend of the terms and abbreviations shown on the floor plans and notes that are applicable thereto.
- The door shown in the part plan of the residential property has been altered by way of minor works or exempted works under the Buildings Ordinance after completion of the Phase.

備註:

- 樓面平面圖所列之尺寸為以毫米標示之建築結構尺寸。
- 樓面平面圖中顯示之名詞及簡稱之圖例及其適用的備註，請參閱本售樓說明書第AL001至003頁。
- 於住宅物業的現狀部份平面圖所顯示的門在期數落成後進行小型工程或獲《建築物條例》豁免的工程而有所改動。

FLOOR PLANS OF RESIDENTIAL PROPERTIES IN THE PHASE

期數的住宅物業的樓面平面圖

Tower 1 (Sky Tower) 32/F 第1座 (Sky Tower) 32樓



32/F PART PLAN IN
"AS-IS" LAYOUT
32樓現狀部分平面圖

FLOOR PLANS OF RESIDENTIAL PROPERTIES IN THE PHASE

期數的住宅物業的樓面平面圖

Block Name 大廈名稱	Floor 樓層	Flat 單位	The floor-to-floor height of each residential property (mm) 每個住宅物業的層與層之間的高度(毫米)	The thickness of the floor slabs (excluding plaster) of each residential property (mm) 每個住宅物業的樓板(不包括灰泥)的厚度(毫米)
Tower 1 (Sky Tower) 第1座 (Sky Tower)	33/F 33樓	A	3050, 3100, 3150, 3250, 3500	150, 175, 200, 225, 250
		B	3050, 3100, 3150, 3200, 3250, 3350, 3500	150, 175, 200, 225, 250
		C	3100, 3150, 3200, 3250, 3350, 3500	150, 175, 200
		D	3100, 3150, 3250, 3500	150, 200, 250

The internal areas of the residential properties on the upper floors will generally be slightly larger than those on the lower floors because of the reducing thickness of the structural walls on the upper floors. (This does not apply to the residential properties in the Phase because the design of the Phase does not involve reducing thickness of structural walls of residential properties on the upper floors.)
因住宅物業的較高樓層的結構牆的厚度遞減，較高樓層的內部面積，一般比較低樓層的內部面積稍大。(不適用於期數內的住宅物業，因期數的設計並不牽涉住宅物業的較高樓層的結構牆的厚度遞減。)

Notes:

- The dimensions of the floor plan are all structural dimensions in millimetres.
- Please refer to Pages AL001-003 of this sales brochure for the legend of the terms and abbreviations shown on the floor plans and notes that are applicable thereto.
- The door shown in the part plan of the residential property has been altered by way of minor works or exempted works under the Buildings Ordinance after completion of the Phase.

備註:

- 樓面平面圖所列之尺寸為以毫米標示之建築結構尺寸。
- 樓面平面圖中顯示之名詞及簡稱之圖例及其適用的備註，請參閱本售樓說明書第AL001至003頁。
- 於住宅物業的現狀部份平面圖所顯示的門在期數落成後進行小型工程或獲《建築物條例》豁免的工程而有所改動。

FLOOR PLANS OF RESIDENTIAL PROPERTIES IN THE PHASE

期數的住宅物業的樓面平面圖

Tower 1 (Sky Tower) 33/F
第1座 (Sky Tower) 33樓



FLOOR PLANS OF RESIDENTIAL PROPERTIES IN THE PHASE

期數的住宅物業的樓面平面圖

Block Name 大廈名稱	Floor 樓層	Flat 單位	The floor-to-floor height of each residential property (mm) 每個住宅物業的層與層之間的高度(毫米)	The thickness of the floor slabs (excluding plaster) of each residential property (mm) 每個住宅物業的樓板(不包括灰泥)的厚度(毫米)
Tower 1 (Sky Tower) 第1座 (Sky Tower)	35/F-43/F & 45/F-46/F 35樓至43樓及45至46樓	A	3050, 3100, 3150, 3250, 3500	150, 175, 200, 225, 250
		B	3050, 3100, 3150, 3200, 3250, 3350, 3500	150, 175, 200, 225, 250
		C	3100, 3150, 3200, 3250, 3350, 3500	150, 175, 200
		D	3100, 3150, 3250, 3500	150, 200, 250
Tower 1 (Sky Tower) 第1座 (Sky Tower)	47/F 47樓	A	3050, 3100, 3150, 3200, 3250, 3500	150, 175, 200, 225, 250
		B	3150, 3200, 3250, 3300, 3500	150, 175, 200, 225, 250
		C	3100, 3150, 3200, 3250, 3350, 3500	150, 175, 200
		D	3100, 3150, 3250, 3500	150, 200, 250

The internal areas of the residential properties on the upper floors will generally be slightly larger than those on the lower floors because of the reducing thickness of the structural walls on the upper floors. (This does not apply to the residential properties in the Phase because the design of the Phase does not involve reducing thickness of structural walls of residential properties on the upper floors.)
因住宅物業的較高樓層的結構牆的厚度遞減，較高樓層的內部面積，一般比較低樓層的內部面積稍大。(不適用於期數內的住宅物業，因期數的設計並不牽涉住宅物業的較高樓層的結構牆的厚度遞減。)

Notes:

- The dimensions of the floor plan are all structural dimensions in millimetres.
- Please refer to Pages AL001-003 of this sales brochure for the legend of the terms and abbreviations shown on the floor plans and notes that are applicable thereto.
- The door shown in the part plan of the residential property has been altered by way of minor works or exempted works under the Buildings Ordinance after completion of the Phase.

備註:

- 樓面平面圖所列之尺寸為以毫米標示之建築結構尺寸。
- 樓面平面圖中顯示之名詞及簡稱之圖例及其適用的備註，請參閱本售樓說明書第AL001至003頁。
- 於住宅物業的現狀部份平面圖所顯示的門在期數落成後進行小型工程或獲《建築物條例》豁免的工程而有所改動。

FLOOR PLANS OF RESIDENTIAL PROPERTIES IN THE PHASE

期數的住宅物業的樓面平面圖

Tower 1 (Sky Tower) 35/F-43/F, 45/F-47/F

第1座 (Sky Tower) 35樓至43樓, 45樓至47樓

FOR INFORMATION ON THE CURVED ARCHITECTURAL FEATURES ON 36/F, 38/F - 39/F, 41/F - 42/F & 45/F - 47/F, PLEASE REFER TO PART PLAN OF FLAT C & FLAT D ON 36/F, 38/F - 39/F, 41/F - 42/F & 45/F - 47/F IN AL025 - AL028

有關位於36樓、38樓至39樓、41樓至42樓及45樓至47樓的彎形建築裝飾，請參閱AL025至AL028的36樓、38樓至39樓、41樓至42樓及45樓至47樓C單位及D單位部分平面圖

FOR INFORMATION ON THE CURVED ARCHITECTURAL FEATURES ON 36/F, 38/F - 39/F, 41/F - 42/F & 45/F - 47/F, PLEASE REFER TO PART PLAN OF FLAT A & FLAT B ON 36/F, 38/F - 39/F, 41/F - 42/F & 45/F - 47/F IN AL023 - AL024

有關位於36樓、38樓至39樓、41樓至42樓及45樓至47樓的彎形建築裝飾，請參閱AL023至AL024的36樓、38樓至39樓、41樓至42樓及45樓至47樓A單位及B單位部分平面圖

FOR INFORMATION ON THE CURVED ARCHITECTURAL FEATURES ON 36/F, 38/F - 39/F, 41/F - 42/F & 45/F - 47/F, PLEASE REFER TO PART PLAN OF FLAT C & FLAT D ON 36/F, 38/F - 39/F, 41/F - 42/F & 45/F - 47/F IN AL025 - AL028

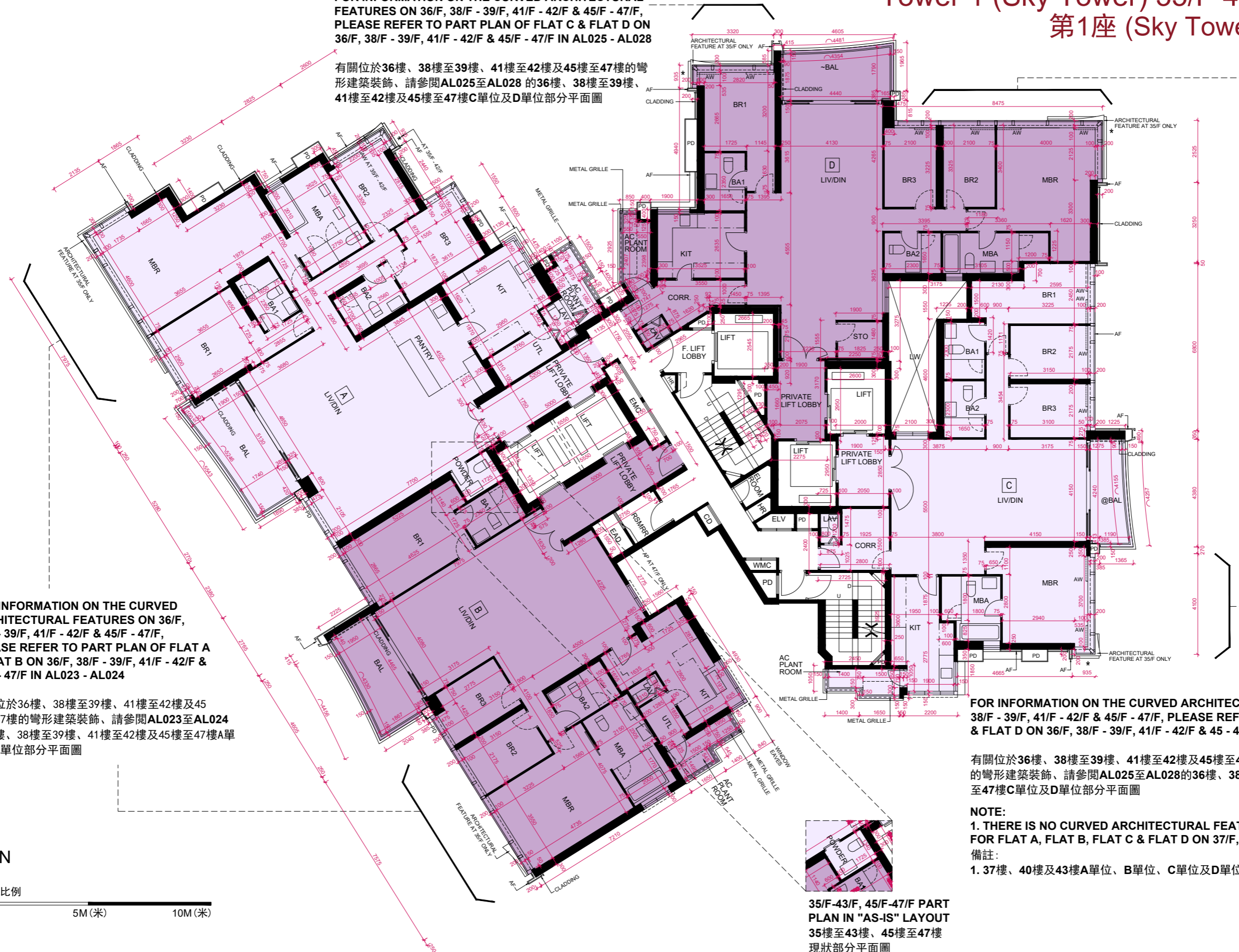
有關位於36樓、38樓至39樓、41樓至42樓及45樓至47樓的彎形建築裝飾，請參閱AL025至AL028的36樓、38樓至39樓、41樓至42樓及45樓至47樓C單位及D單位部分平面圖

NOTE:

1. THERE IS NO CURVED ARCHITECTURAL FEATURE FOR FLAT A, FLAT B, FLAT C & FLAT D ON 37/F, 40/F & 43/F

備註:

1. 37樓、40樓及43樓A單位、B單位、C單位及D單位沒有彎形建築裝飾



35/F-43/F, 45/F-47/F PART PLAN IN "AS-IS" LAYOUT
35樓至43樓、45樓至47樓現狀部分平面圖

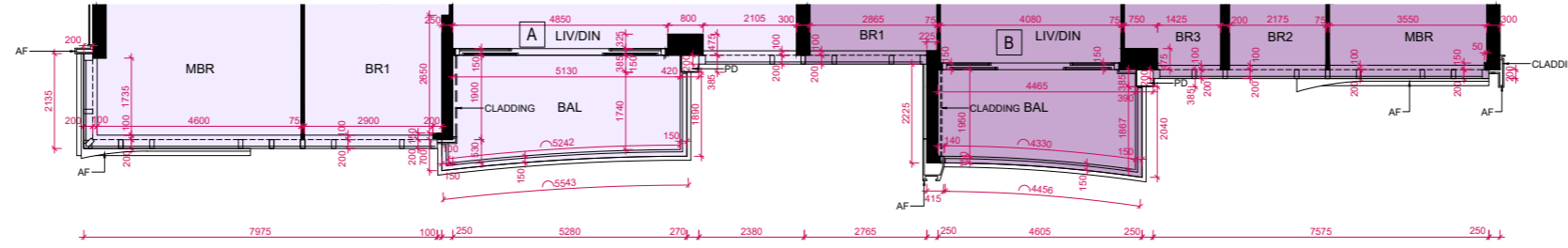
FLOOR PLANS OF RESIDENTIAL PROPERTIES IN THE PHASE

期數的住宅物業的樓面平面圖

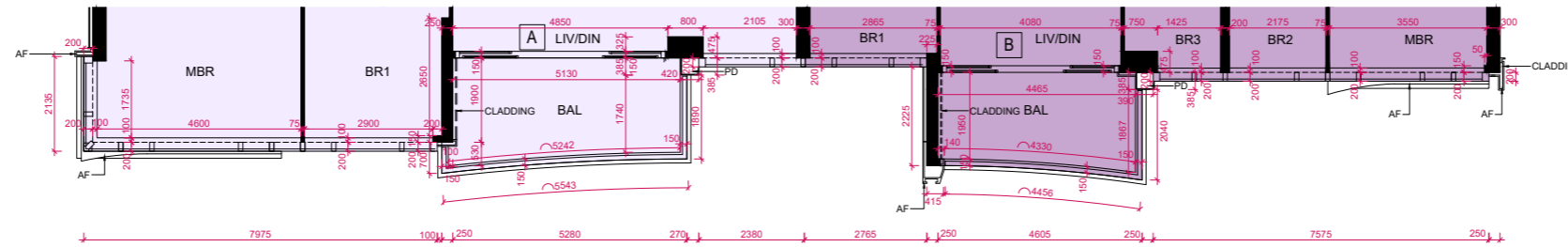
Tower 1 (Sky Tower) 35/F-43/F, 45/F-47/F

第1座 (Sky Tower) 35樓至43樓, 45樓至47樓

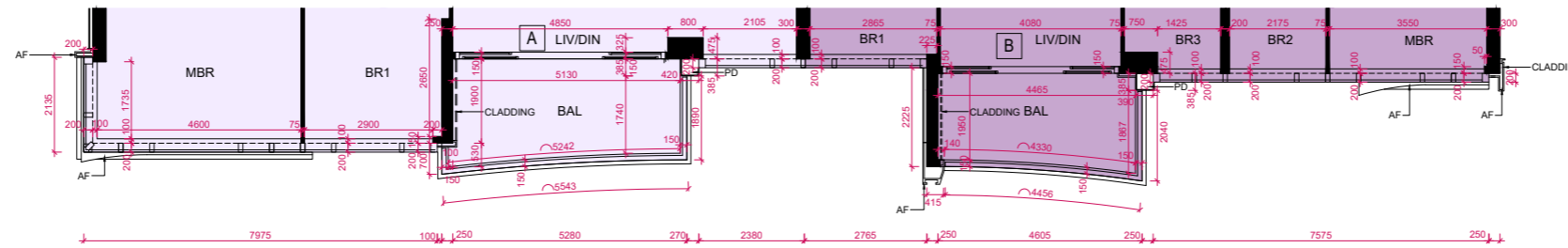
PART PLAN OF FLAT A & FLAT B ON 41/F
41樓A單位及B單位部分平面圖



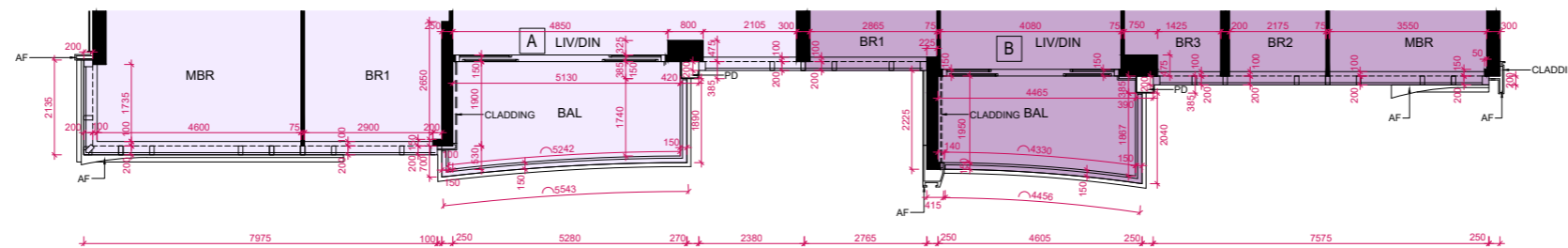
PART PLAN OF FLAT A & FLAT B ON 39/F
39樓A單位及B單位部分平面圖



PART PLAN OF FLAT A & FLAT B ON 38/F
38樓A單位及B單位部分平面圖



PART PLAN OF FLAT A & FLAT B ON 36/F
36樓A單位及B單位部分平面圖



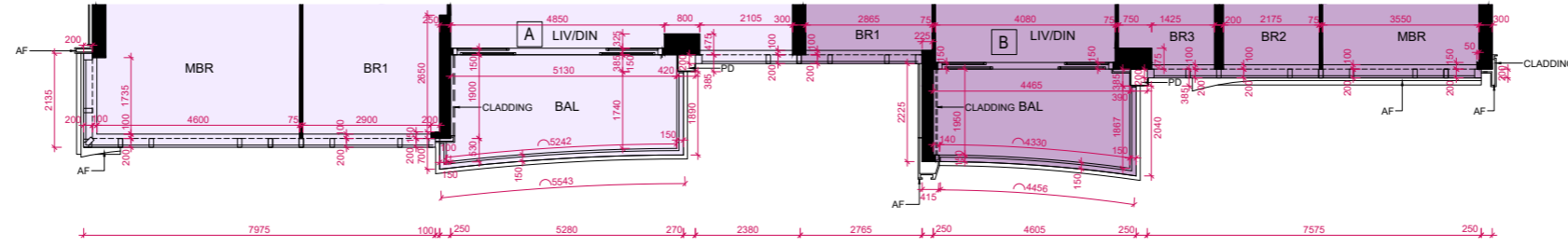
Scale 比例
0M(米) 5M(米) 10M(米)

FLOOR PLANS OF RESIDENTIAL PROPERTIES IN THE PHASE

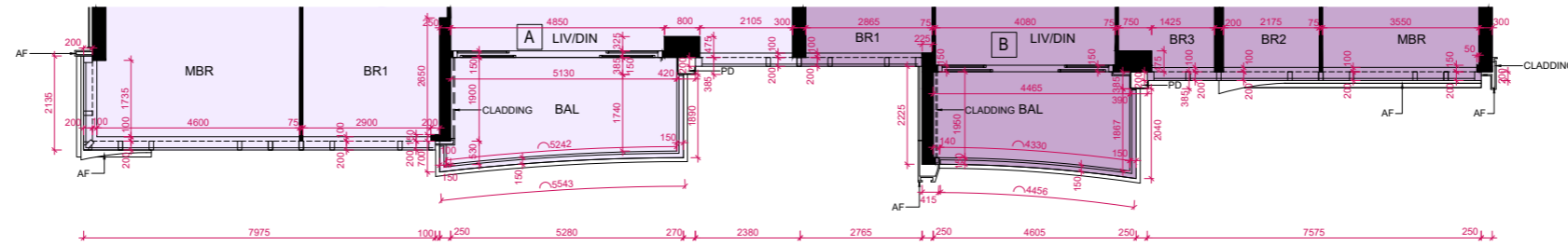
期數的住宅物業的樓面平面圖

Tower 1 (Sky Tower) 35/F-43/F, 45/F-47/F
 第1座 (Sky Tower) 35樓至43樓,
 45樓至47樓

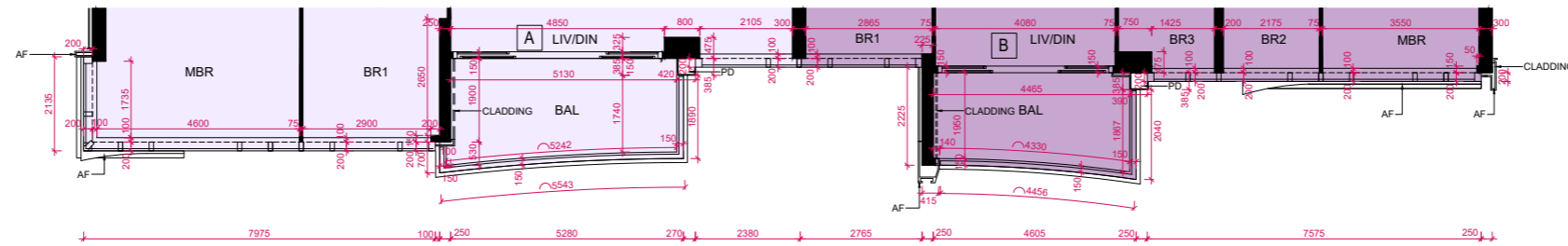
PART PLAN OF FLAT A & FLAT B ON 47/F
 47樓A單位及B單位部分平面圖



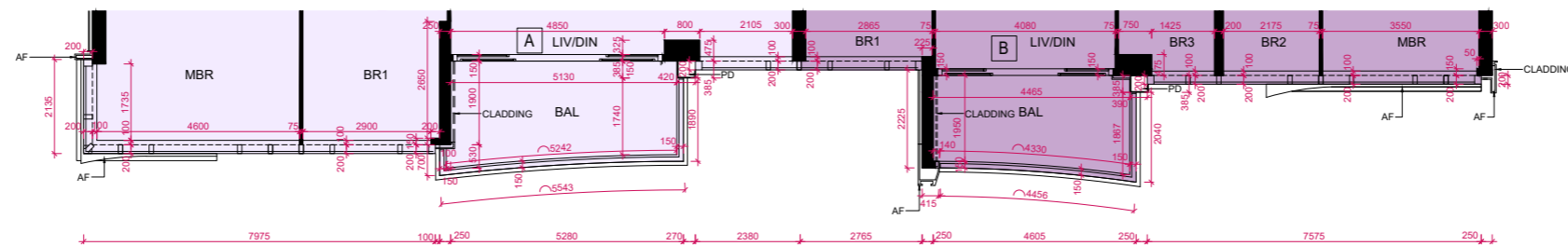
PART PLAN OF FLAT A & FLAT B ON 46/F
 46樓A單位及B單位部分平面圖



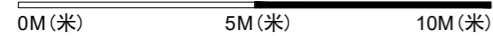
PART PLAN OF FLAT A & FLAT B ON 45/F
 45樓A單位及B單位部分平面圖



PART PLAN OF FLAT A & FLAT B ON 42/F
 42樓A單位及B單位部分平面圖



Scale 比例

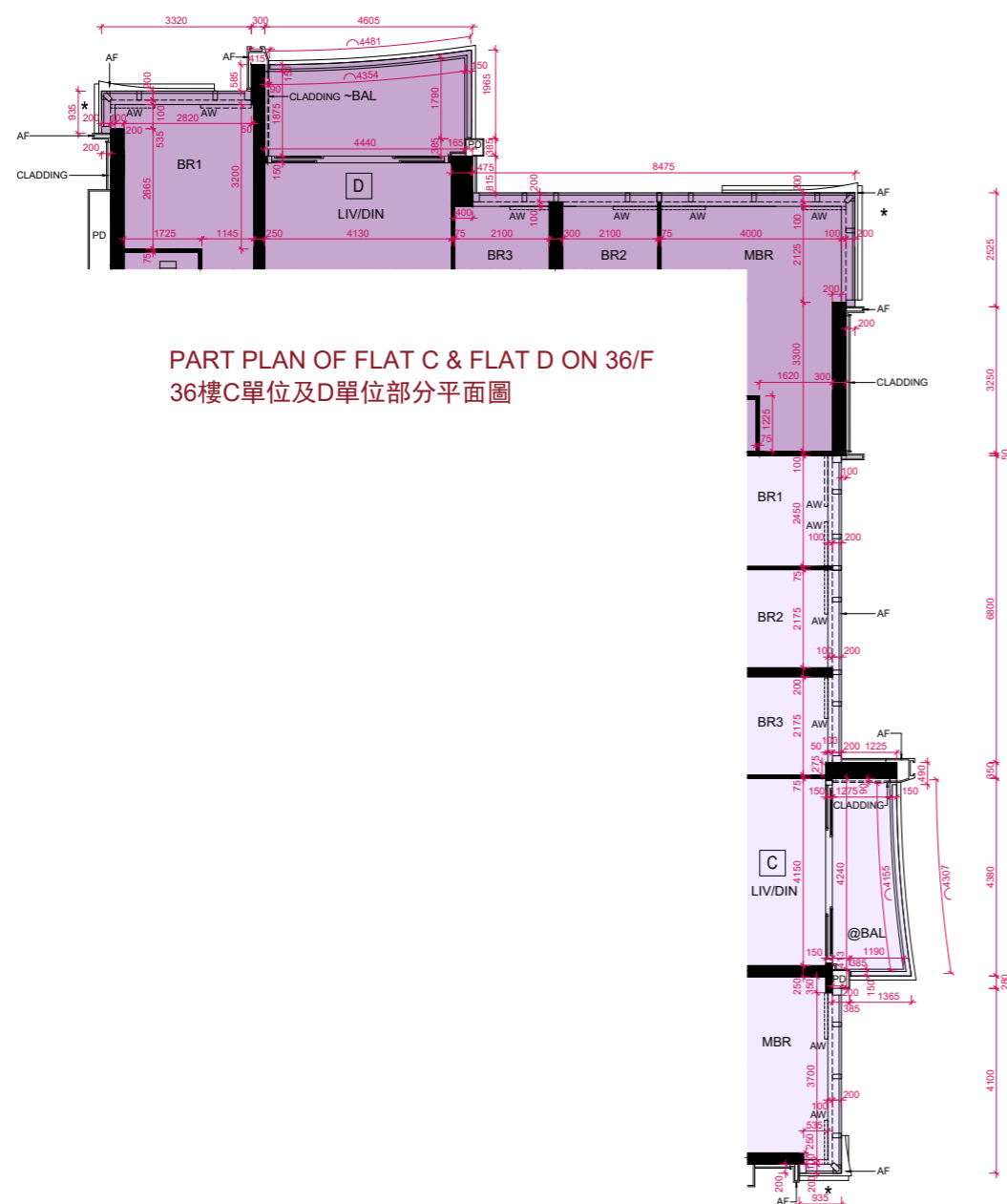


FLOOR PLANS OF RESIDENTIAL PROPERTIES IN THE PHASE

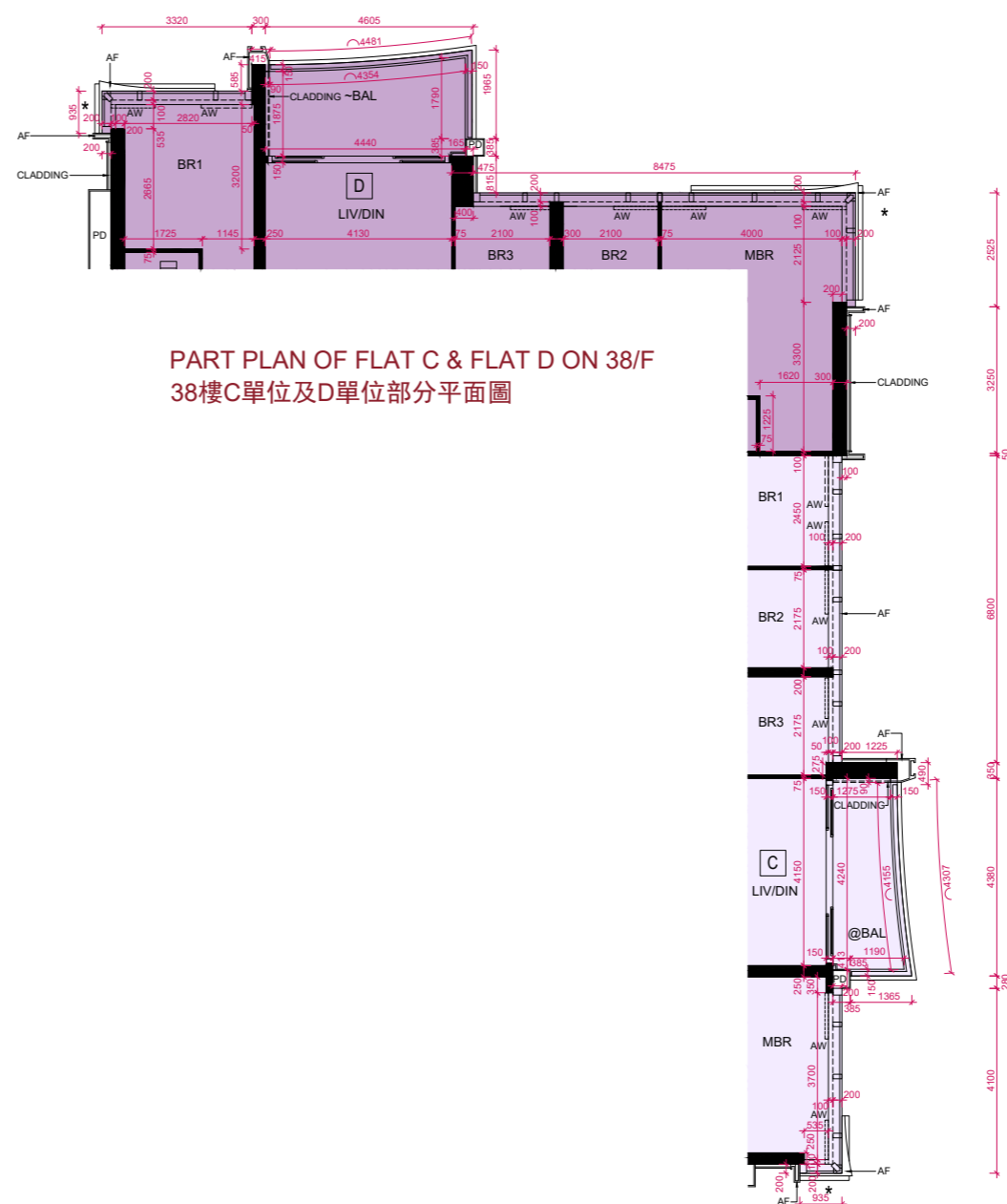
期數的住宅物業的樓面平面圖

Tower 1 (Sky Tower) 35/F-43/F, 45/F-47/F

第1座 (Sky Tower) 35樓至43樓, 45樓至47樓



PART PLAN OF FLAT C & FLAT D ON 36/F
36樓C單位及D單位部分平面圖



PART PLAN OF FLAT C & FLAT D ON 38/F
38樓C單位及D單位部分平面圖



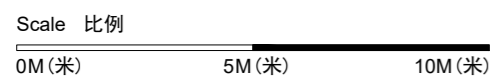
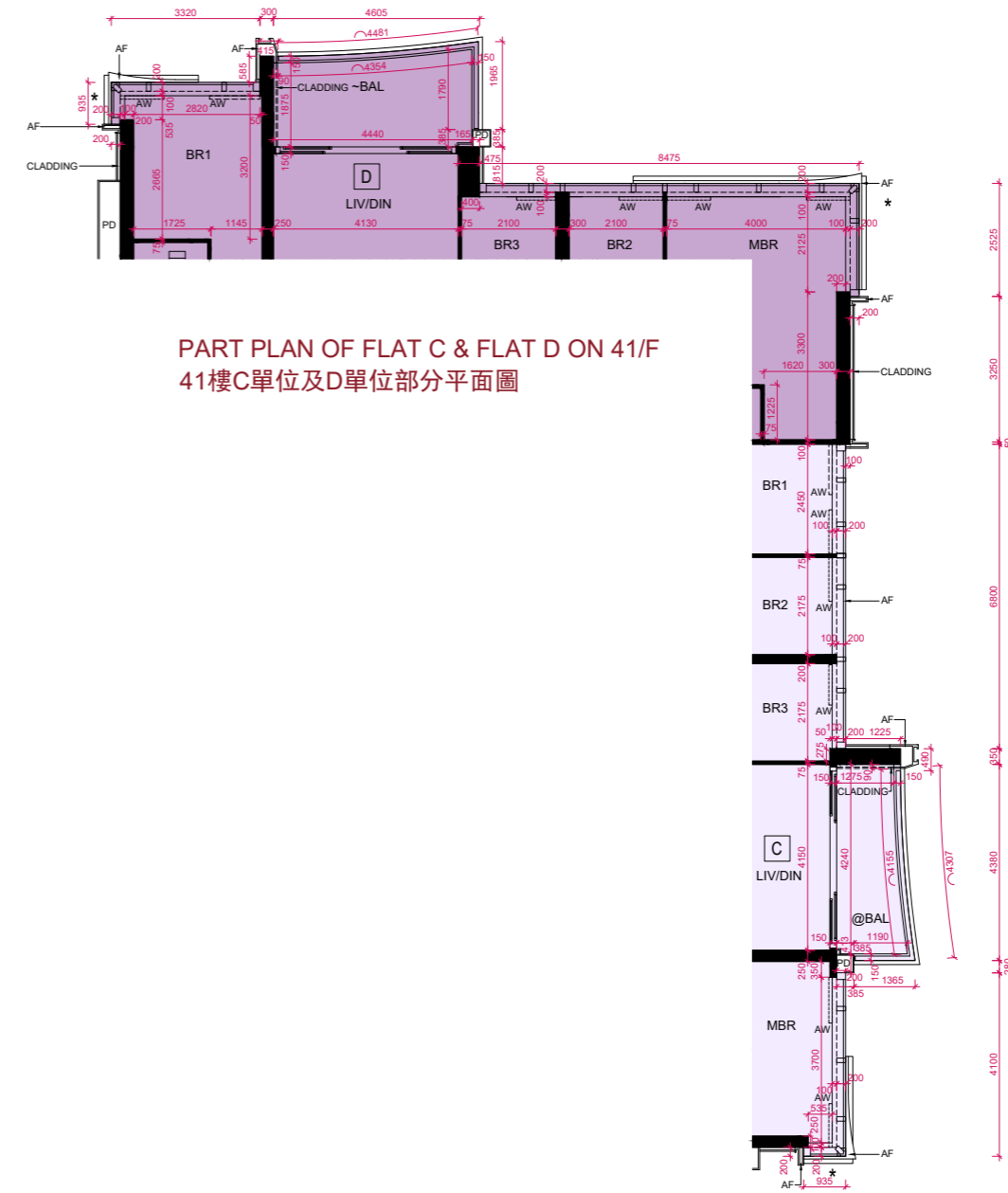
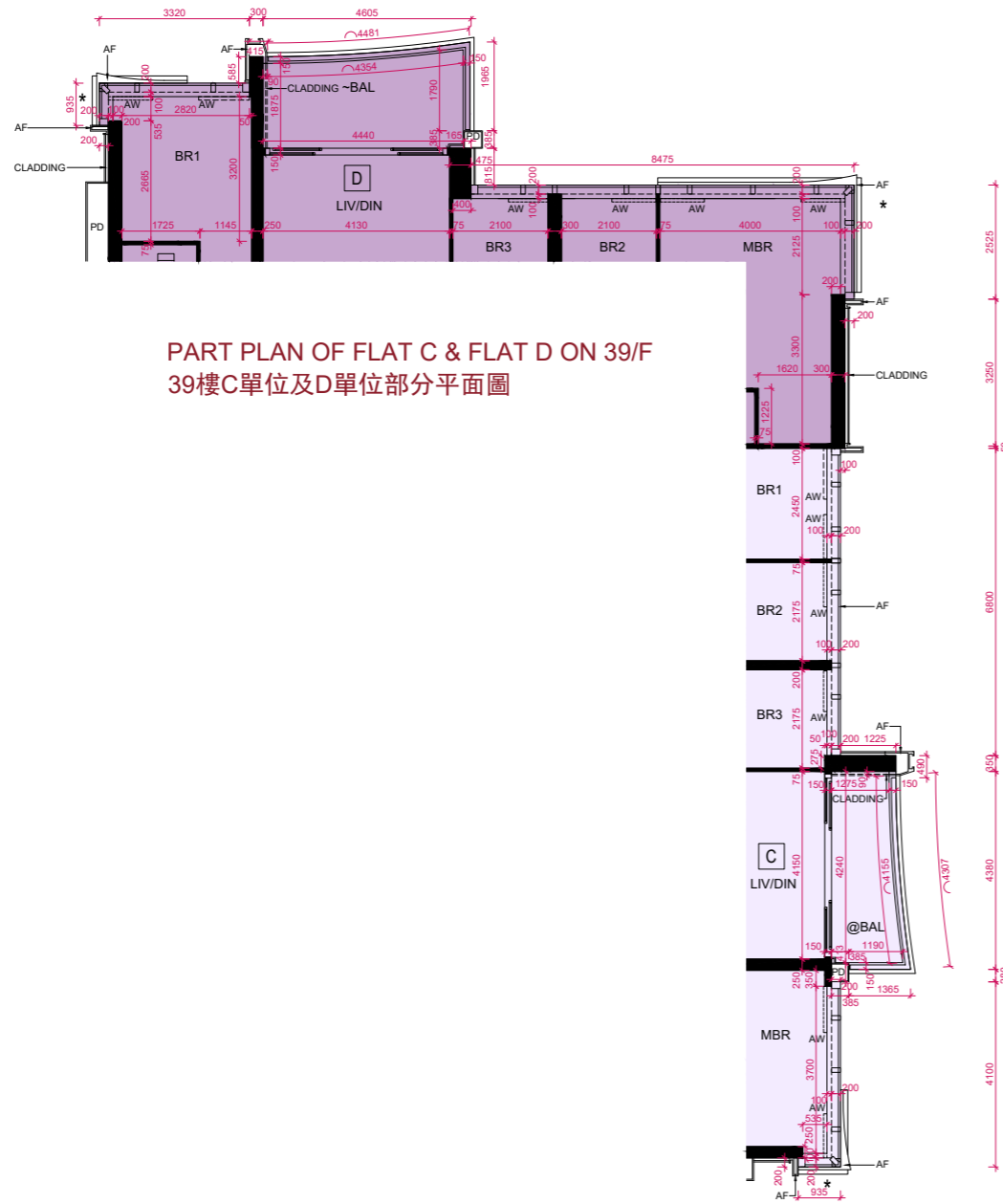
Scale 比例
0M(米) 5M(米) 10M(米)

FLOOR PLANS OF RESIDENTIAL PROPERTIES IN THE PHASE

期數的住宅物業的樓面平面圖

Tower 1 (Sky Tower) 35/F-43/F, 45/F-47/F

第1座 (Sky Tower) 35樓至43樓, 45樓至47樓

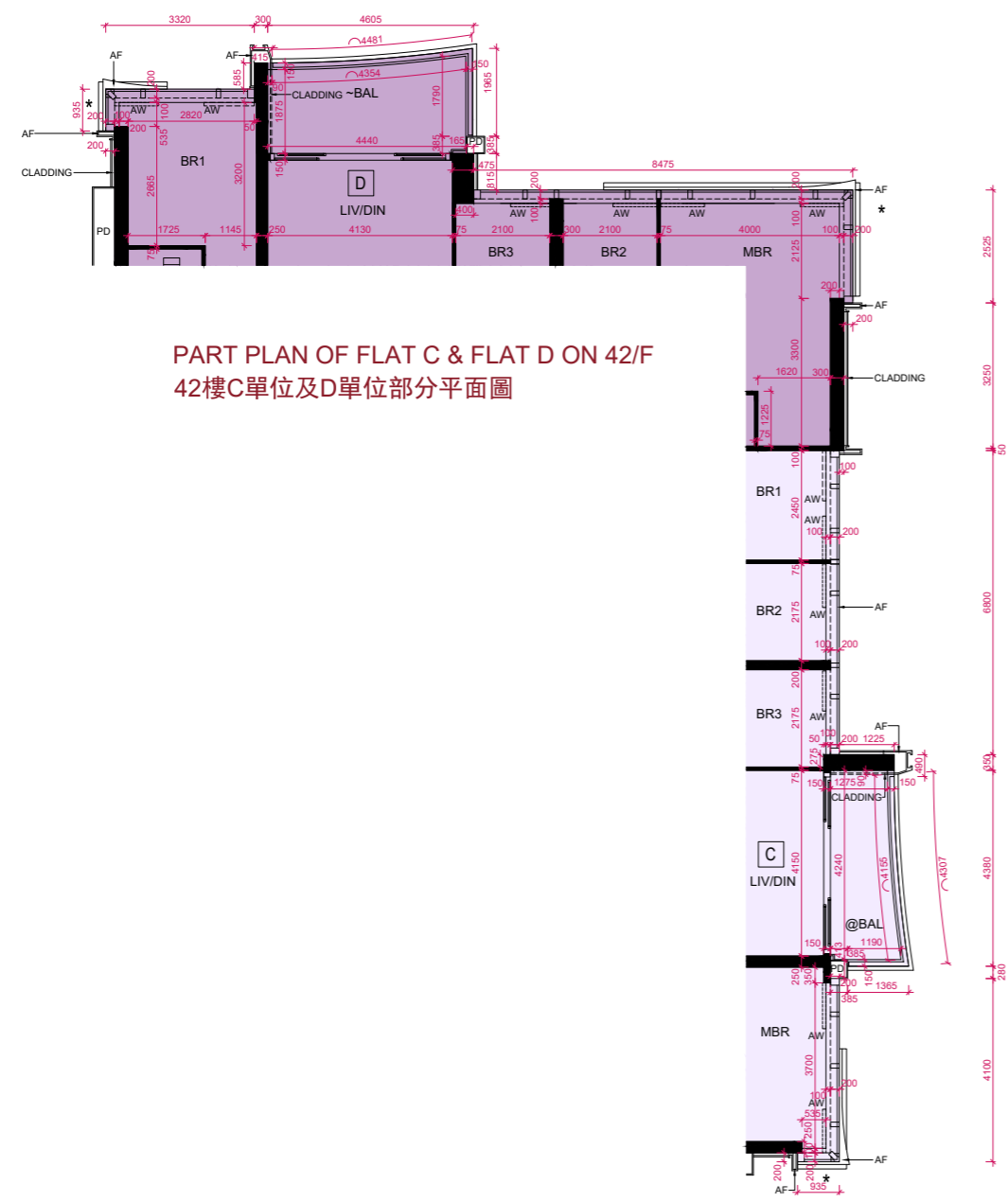


FLOOR PLANS OF RESIDENTIAL PROPERTIES IN THE PHASE

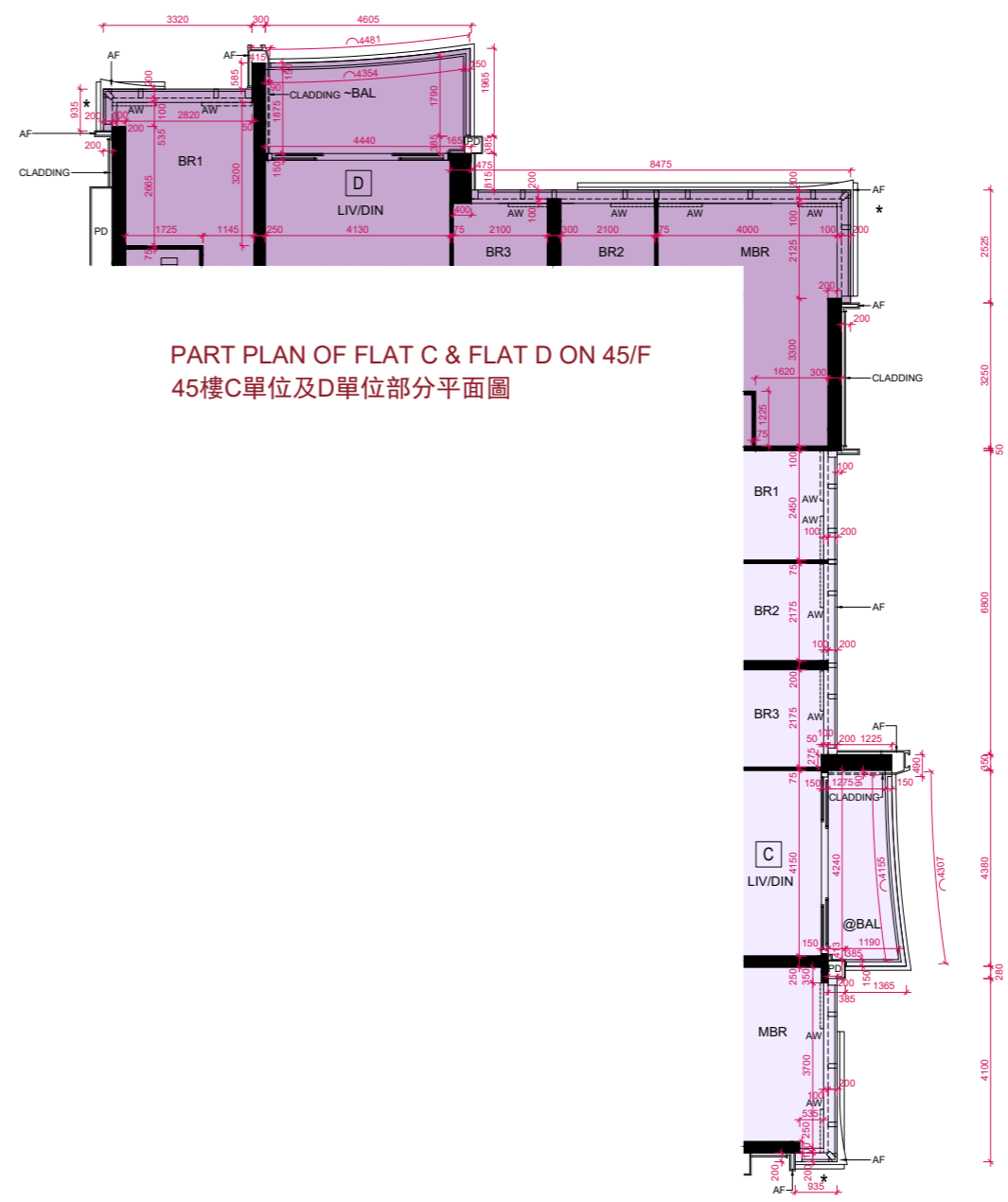
期數的住宅物業的樓面平面圖

Tower 1 (Sky Tower) 35/F-43/F, 45/F-47/F

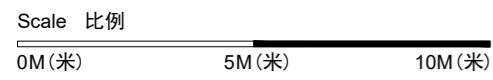
第1座 (Sky Tower) 35樓至43樓, 45樓至47樓



PART PLAN OF FLAT C & FLAT D ON 42/F
42樓C單位及D單位部分平面圖



PART PLAN OF FLAT C & FLAT D ON 45/F
45樓C單位及D單位部分平面圖

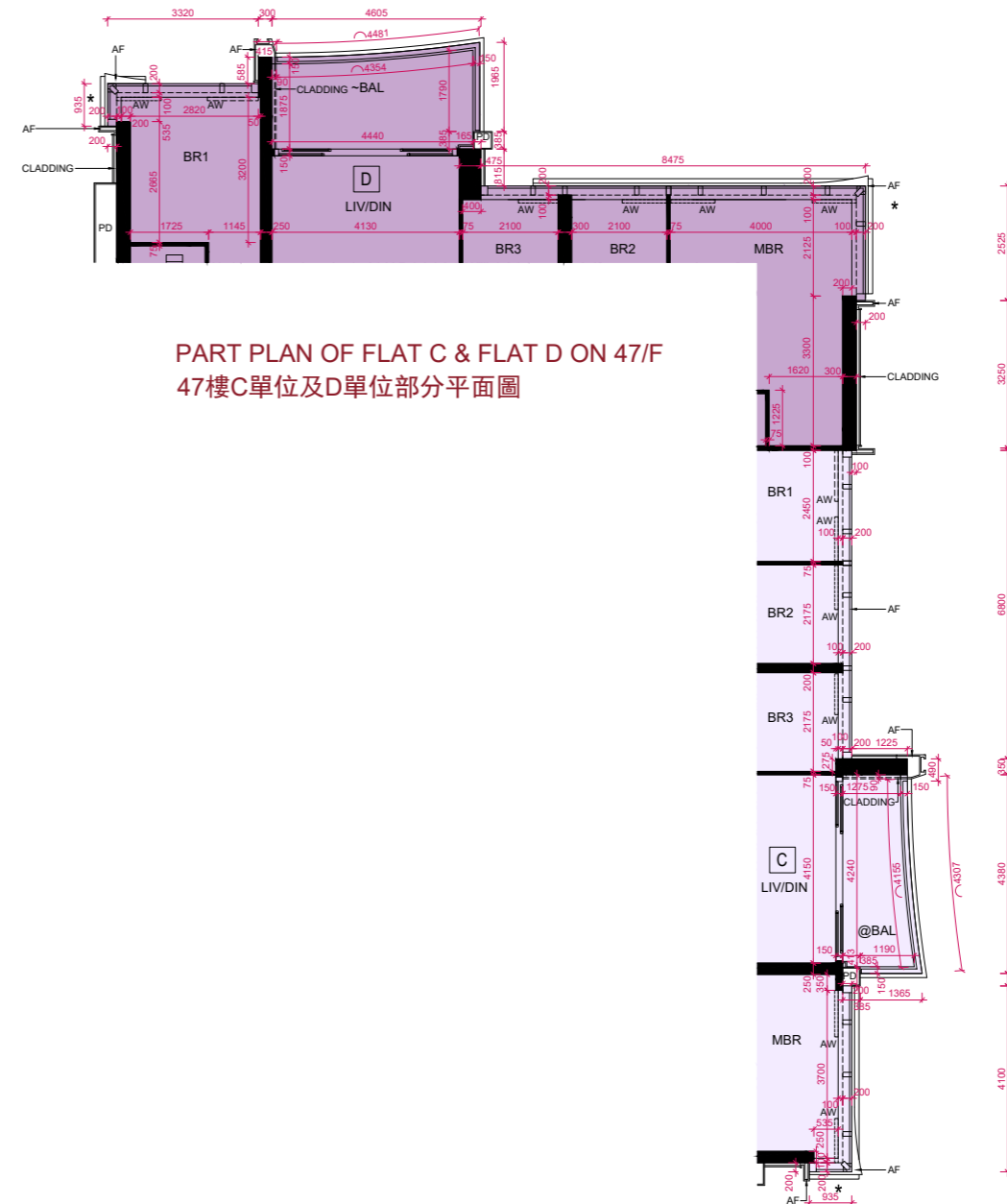
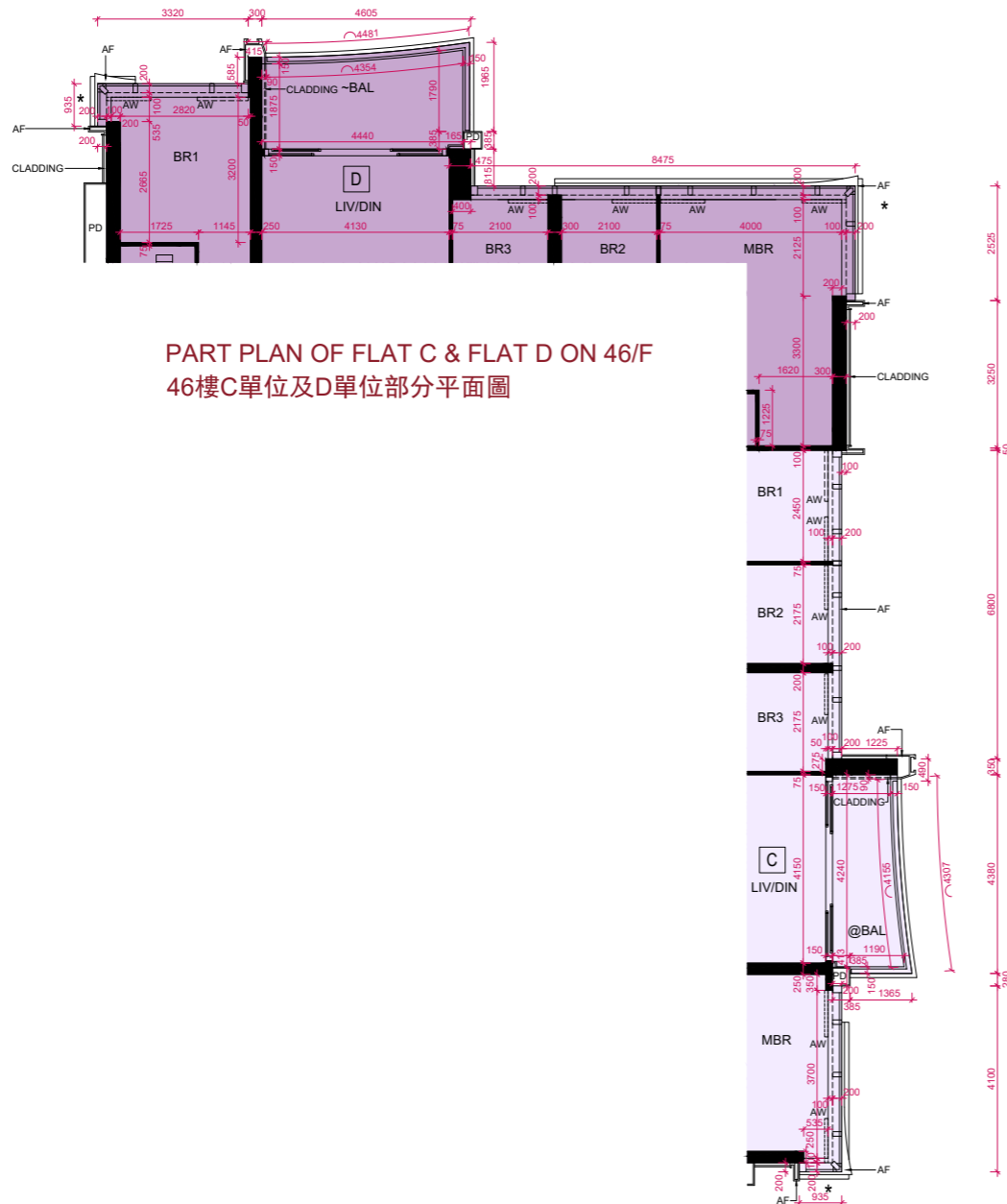


FLOOR PLANS OF RESIDENTIAL PROPERTIES IN THE PHASE

期數的住宅物業的樓面平面圖

Tower 1 (Sky Tower) 35/F-43/F, 45/F-47/F

第1座 (Sky Tower) 35樓至43樓, 45樓至47樓



Scale 比例

0M (米) 5M (米) 10M (米)

FLOOR PLANS OF RESIDENTIAL PROPERTIES IN THE PHASE

期數的住宅物業的樓面平面圖

Block Name 大廈名稱	Floor 樓層	Flat 單位	The floor-to-floor height of each residential property (mm) 每個住宅物業的層與層之間的高度(毫米)	The thickness of the floor slabs (excluding plaster) of each residential property (mm) 每個住宅物業的樓板(不包括灰泥)的厚度(毫米)
Tower 1 (Sky Tower) 第1座 (Sky Tower)	48/F 48樓	Cullinan Sky Villa A	3150, 3200, 3250, 3275, 3500	150, 175, 200, 250, 275, 350
		Cullinan Sky Villa C	3150, 3200, 3250, 3500	150, 200
		Cullinan Sky Villa D	3050, 3100, 3150, 3200, 3500	150, 200, 250

The internal areas of the residential properties on the upper floors will generally be slightly larger than those on the lower floors because of the reducing thickness of the structural walls on the upper floors. (This does not apply to the residential properties in the Phase because the design of the Phase does not involve reducing thickness of structural walls of residential properties on the upper floors.)
因住宅物業的較高樓層的結構牆的厚度遞減，較高樓層的內部面積，一般比較低樓層的內部面積稍大。(不適用於期數內的住宅物業，因期數的設計並不牽涉住宅物業的較高樓層的結構牆的厚度遞減。)

Notes:

1. The dimensions of the floor plan are all structural dimensions in millimetres.
2. Please refer to Pages AL001-003 of this sales brochure for the legend of the terms and abbreviations shown on the floor plans and notes that are applicable thereto.

備註:

1. 樓面平面圖所列之尺寸為以毫米標示之建築結構尺寸。
2. 樓面平面圖中顯示之名詞及簡稱之圖例及其適用的備註，請參閱本售樓說明書第AL001至003頁。

FLOOR PLANS OF RESIDENTIAL PROPERTIES IN THE PHASE

期數的住宅物業的樓面平面圖

Tower 1 (Sky Tower) 48/F 第1座 (Sky Tower) 48樓



Scale 比例



FLOOR PLANS OF RESIDENTIAL PROPERTIES IN THE PHASE

期數的住宅物業的樓面平面圖

Block Name 大廈名稱	Floor 樓層	Flat 單位	The floor-to-floor height of each residential property (mm) 每個住宅物業的層與層之間的高度(毫米)	The thickness of the floor slabs (excluding plaster) of each residential property (mm) 每個住宅物業的樓板(不包括灰泥)的厚度(毫米)
Tower 1 (Sky Tower) 第1座 (Sky Tower)	49/F 49樓	Cullinan Sky House A	3550, 3600, 3650, 3700, 3750, 4000	175, 200, 350
		Cullinan Sky House C	3550, 3600, 3650, 3700, 3750, 4000	175, 200
		Cullinan Sky House D	3550, 3600, 3650, 3700, 3750, 4000	200

The internal areas of the residential properties on the upper floors will generally be slightly larger than those on the lower floors because of the reducing thickness of the structural walls on the upper floors. (This does not apply to the residential properties in the Phase because the design of the Phase does not involve reducing thickness of structural walls of residential properties on the upper floors.)
因住宅物業的較高樓層的結構牆的厚度遞減，較高樓層的內部面積，一般比較低樓層的內部面積稍大。(不適用於期數內的住宅物業，因期數的設計並不牽涉住宅物業的較高樓層的結構牆的厚度遞減。)

Notes:

- The dimensions of the floor plan are all structural dimensions in millimetres.
- Please refer to Pages AL001-003 of this sales brochure for the legend of the terms and abbreviations shown on the floor plans and notes that are applicable thereto.

備註:

- 樓面平面圖所列之尺寸為以毫米標示之建築結構尺寸。
- 樓面平面圖中顯示之名詞及簡稱之圖例及其適用的備註，請參閱本售樓說明書第AL001至003頁。

FLOOR PLANS OF RESIDENTIAL PROPERTIES IN THE PHASE

期數的住宅物業的樓面平面圖

Tower 1 (Sky Tower) 49/F 第1座 (Sky Tower) 49樓



FLOOR PLANS OF RESIDENTIAL PROPERTIES IN THE PHASE

期數的住宅物業的樓面平面圖

Block Name 大廈名稱	Floor 樓層	Flat 單位	The floor-to-floor height of each residential property (mm) 每個住宅物業的層與層之間的高度(毫米)	The thickness of the floor slabs (excluding plaster) of each residential property (mm) 每個住宅物業的樓板(不包括灰泥)的厚度(毫米)
Tower 1 (Sky Tower) 第1座 (Sky Tower)	50/F 50樓	Cullinan Sky House A	3250, 3500	200, 250
		Cullinan Sky House C	3500	175, 200
		Cullinan Sky House D	3500	200, 250

The internal areas of the residential properties on the upper floors will generally be slightly larger than those on the lower floors because of the reducing thickness of the structural walls on the upper floors. (This does not apply to the residential properties in the Phase because the design of the Phase does not involve reducing thickness of structural walls of residential properties on the upper floors.)
因住宅物業的較高樓層的結構牆的厚度遞減，較高樓層的內部面積，一般比較低樓層的內部面積稍大。(不適用於期數內的住宅物業，因期數的設計並不牽涉住宅物業的較高樓層的結構牆的厚度遞減。)

Notes:

1. The dimensions of the floor plan are all structural dimensions in millimetres.
2. Please refer to Pages AL001-003 of this sales brochure for the legend of the terms and abbreviations shown on the floor plans and notes that are applicable thereto.

備註:

1. 樓面平面圖所列之尺寸為以毫米標示之建築結構尺寸。
2. 樓面平面圖中顯示之名詞及簡稱之圖例及其適用的備註，請參閱本售樓說明書第AL001至003頁。

FLOOR PLANS OF RESIDENTIAL PROPERTIES IN THE PHASE

期數的住宅物業的樓面平面圖

Tower 1 (Sky Tower) 50/F
第1座 (Sky Tower) 50樓



FLOOR PLANS OF RESIDENTIAL PROPERTIES IN THE PHASE

期數的住宅物業的樓面平面圖

Block Name 大廈名稱	Floor 樓層	Flat 單位	The floor-to-floor height of each residential property (mm) 每個住宅物業的層與層之間的高度(毫米)	The thickness of the floor slabs (excluding plaster) of each residential property (mm) 每個住宅物業的樓板(不包括灰泥)的厚度(毫米)
Tower 1 (Sky Tower) 第1座 (Sky Tower)	Main Roof 天台	Cullinan Sky House A	3500	200
		Cullinan Sky House C	3350	200
		Cullinan Sky House D	3350	200

The internal areas of the residential properties on the upper floors will generally be slightly larger than those on the lower floors because of the reducing thickness of the structural walls on the upper floors. (This does not apply to the residential properties in the Phase because the design of the Phase does not involve reducing thickness of structural walls of residential properties on the upper floors.)
因住宅物業的較高樓層的結構牆的厚度遞減，較高樓層的內部面積，一般比較低樓層的內部面積稍大。(不適用於期數內的住宅物業，因期數的設計並不牽涉住宅物業的較高樓層的結構牆的厚度遞減。)

Notes:

- The dimensions of the floor plan are all structural dimensions in millimetres.
- Please refer to Pages AL001-003 of this sales brochure for the legend of the terms and abbreviations shown on the floor plans and notes that are applicable thereto.

備註:

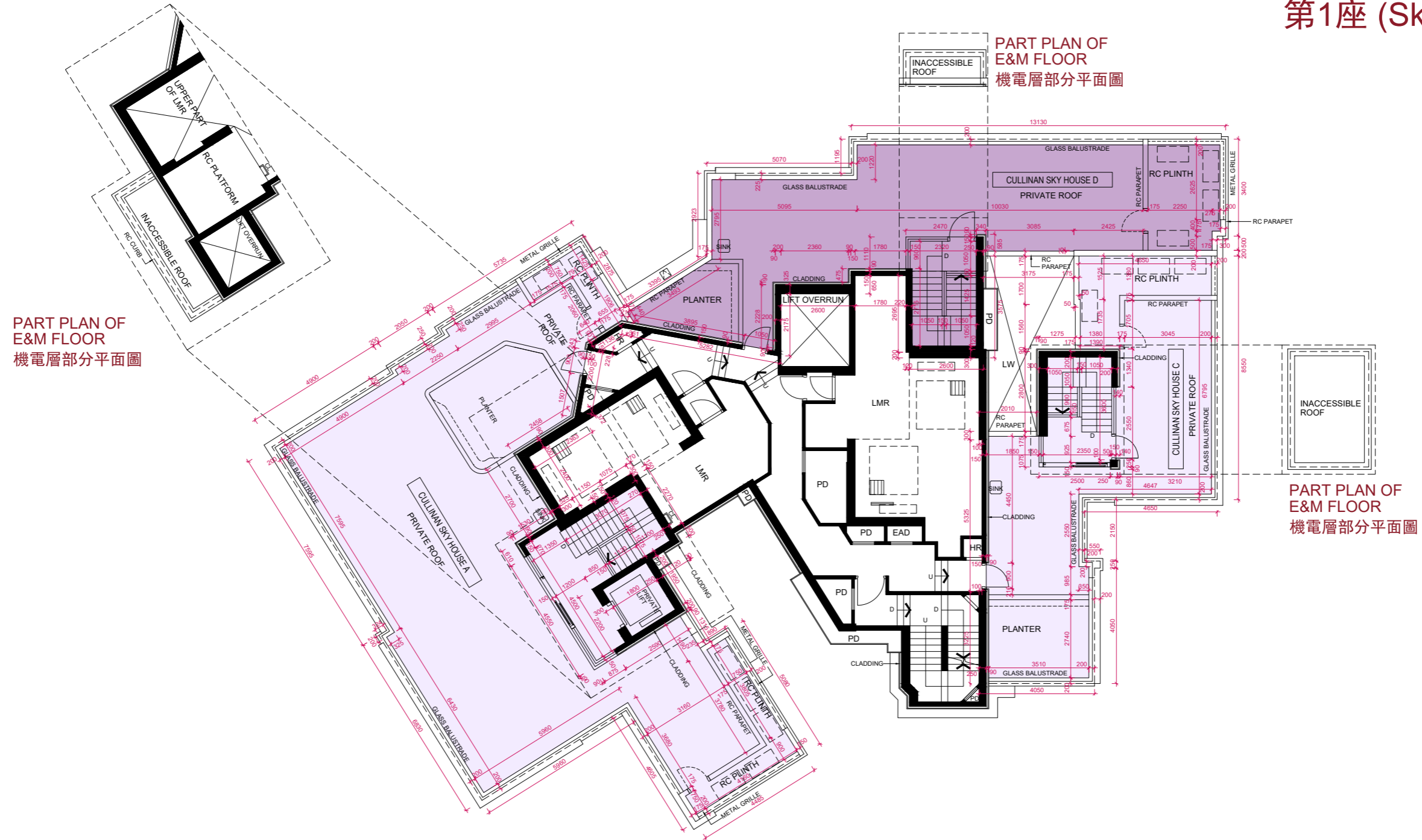
- 樓面平面圖所列之尺寸為以毫米標示之建築結構尺寸。
- 樓面平面圖中顯示之名詞及簡稱之圖例及其適用的備註，請參閱本售樓說明書第AL001至003頁。

FLOOR PLANS OF RESIDENTIAL PROPERTIES IN THE PHASE

期數的住宅物業的樓面平面圖

Tower 1 (Sky Tower) Main Roof

第1座 (Sky Tower) 天台



Scale 比例

0M(米) 5M(米) 10M(米)

FLOOR PLANS OF RESIDENTIAL PROPERTIES IN THE PHASE

期數的住宅物業的樓面平面圖

Block Name 大廈名稱	Floor 樓層	Flat 單位	The floor-to-floor height of each residential property (mm) 每個住宅物業的層與層之間的高度(毫米)	The thickness of the floor slabs (excluding plaster) of each residential property (mm) 每個住宅物業的樓板(不包括灰泥)的厚度(毫米)
Tower 2 (Summit Tower) 第2座 (Summit Tower)	32/F 32樓	A	3050, 3150, 3200, 3250, 3500	150, 175, 200, 225, 250
		B	3050, 3100, 3150, 3200, 3250, 3500	150, 175, 200, 225, 250
		C	3150, 3200, 3250, 3500	150, 175, 200
		D	3100, 3150, 3200, 3250, 3350, 3500	150, 175, 200, 225

The internal areas of the residential properties on the upper floors will generally be slightly larger than those on the lower floors because of the reducing thickness of the structural walls on the upper floors. (This does not apply to the residential properties in the Phase because the design of the Phase does not involve reducing thickness of structural walls of residential properties on the upper floors.)
因住宅物業的較高樓層的結構牆的厚度遞減，較高樓層的內部面積，一般比較低樓層的內部面積稍大。(不適用於期數內的住宅物業，因期數的設計並不牽涉住宅物業的較高樓層的結構牆的厚度遞減。)

Notes:

1. The dimensions of the floor plan are all structural dimensions in millimetres.
2. Please refer to Pages AL001-003 of this sales brochure for the legend of the terms and abbreviations shown on the floor plans and notes that are applicable thereto.

備註:

1. 樓面平面圖所列之尺寸為以毫米標示之建築結構尺寸。
2. 樓面平面圖中顯示之名詞及簡稱之圖例及其適用的備註，請參閱本售樓說明書第AL001至003頁。

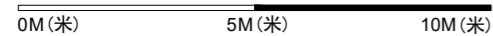
FLOOR PLANS OF RESIDENTIAL PROPERTIES IN THE PHASE

期數的住宅物業的樓面平面圖

Tower 2 (Summit Tower) 32/F 第2座 (Summit Tower) 32樓



Scale 比例



FLOOR PLANS OF RESIDENTIAL PROPERTIES IN THE PHASE

期數的住宅物業的樓面平面圖

Block Name 大廈名稱	Floor 樓層	Flat 單位	The floor-to-floor height of each residential property (mm) 每個住宅物業的層與層之間的高度(毫米)	The thickness of the floor slabs (excluding plaster) of each residential property (mm) 每個住宅物業的樓板(不包括灰泥)的厚度(毫米)
Tower 2 (Summit Tower) 第2座 (Summit Tower)	33/F 33樓	A	3050, 3150, 3200, 3250, 3500	150, 175, 200, 225, 250
		B	3050, 3100, 3150, 3200, 3250, 3500	150, 175, 200, 225, 250
		C	3150, 3200, 3250, 3500	150, 175, 200
		D	3100, 3150, 3200, 3250, 3350, 3500	150, 175, 200, 225

The internal areas of the residential properties on the upper floors will generally be slightly larger than those on the lower floors because of the reducing thickness of the structural walls on the upper floors. (This does not apply to the residential properties in the Phase because the design of the Phase does not involve reducing thickness of structural walls of residential properties on the upper floors.)
因住宅物業的較高樓層的結構牆的厚度遞減，較高樓層的內部面積，一般比較低樓層的內部面積稍大。(不適用於期數內的住宅物業，因期數的設計並不牽涉住宅物業的較高樓層的結構牆的厚度遞減。)

Notes:

- The dimensions of the floor plan are all structural dimensions in millimetres.
- Please refer to Pages AL001-003 of this sales brochure for the legend of the terms and abbreviations shown on the floor plans and notes that are applicable thereto.

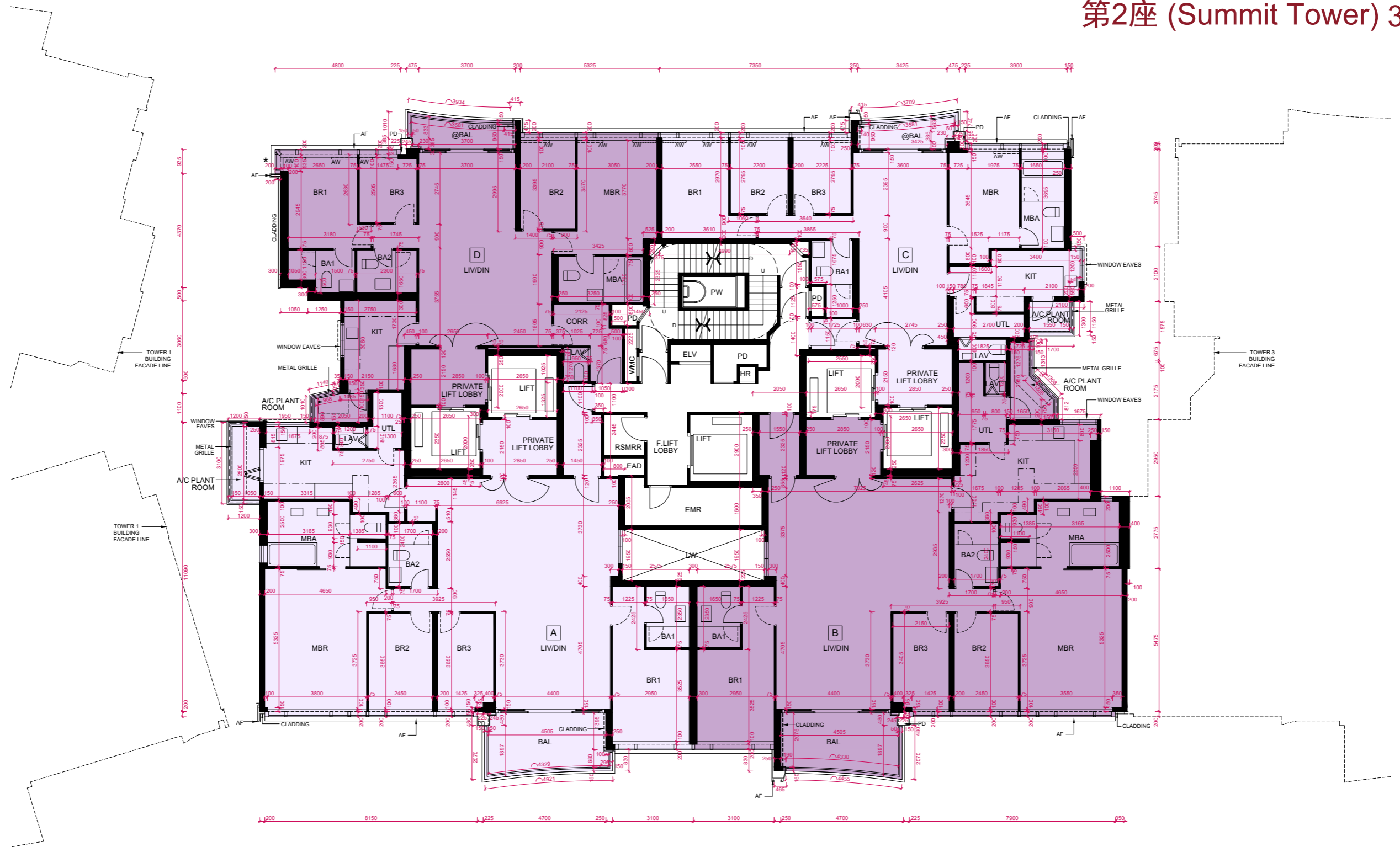
備註:

- 樓面平面圖所列之尺寸為以毫米標示之建築結構尺寸。
- 樓面平面圖中顯示之名詞及簡稱之圖例及其適用的備註，請參閱本售樓說明書第AL001至003頁。

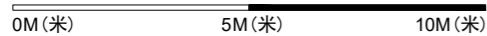
FLOOR PLANS OF RESIDENTIAL PROPERTIES IN THE PHASE

期數的住宅物業的樓面平面圖

Tower 2 (Summit Tower) 33/F 第2座 (Summit Tower) 33樓



Scale 比例



FLOOR PLANS OF RESIDENTIAL PROPERTIES IN THE PHASE

期數的住宅物業的樓面平面圖

Block Name 大廈名稱	Floor 樓層	Flat 單位	The floor-to-floor height of each residential property (mm) 每個住宅物業的層與層之間的高度(毫米)	The thickness of the floor slabs (excluding plaster) of each residential property (mm) 每個住宅物業的樓板(不包括灰泥)的厚度(毫米)
Tower 2 (Summit Tower) 第2座 (Summit Tower)	35/F-43/F & 45/F-46/F 35樓至43樓及45至46樓	A	3050, 3150, 3200, 3250, 3500	150, 175, 200, 225, 250
		B	3050, 3100, 3150, 3200, 3250, 3500	150, 175, 200, 225, 250
		C	3150, 3200, 3250, 3500	150, 175, 200
		D	3100, 3150, 3200, 3250, 3350, 3500	150, 175, 200, 225
	47/F 47樓	A	3200, 3250, 3500	150, 175, 200, 225, 250
		B	3200, 3250, 3500	150, 200, 225, 250
		C	3150, 3200, 3250, 3500	150, 175, 200
		D	3050, 3100, 3200, 3250, 3500	150, 175, 200, 225

The internal areas of the residential properties on the upper floors will generally be slightly larger than those on the lower floors because of the reducing thickness of the structural walls on the upper floors. (This does not apply to the residential properties in the Phase because the design of the Phase does not involve reducing thickness of structural walls of residential properties on the upper floors.)
因住宅物業的較高樓層的結構牆的厚度遞減，較高樓層的內部面積，一般比較低樓層的內部面積稍大。(不適用於期數內的住宅物業，因期數的設計並不牽涉住宅物業的較高樓層的結構牆的厚度遞減。)

Notes:

- The dimensions of the floor plan are all structural dimensions in millimetres.
- Please refer to Pages AL001-003 of this sales brochure for the legend of the terms and abbreviations shown on the floor plans and notes that are applicable thereto.

備註:

- 樓面平面圖所列之尺寸為以毫米標示之建築結構尺寸。
- 樓面平面圖中顯示之名詞及簡稱之圖例及其適用的備註，請參閱本售樓說明書第AL001至003頁。

FLOOR PLANS OF RESIDENTIAL PROPERTIES IN THE PHASE

期數的住宅物業的樓面平面圖

Tower 2 (Summit Tower) 35/F-43/F, 45/F-47/F

第2座 (Summit Tower) 35樓至43樓, 45樓至47樓

FOR INFORMATION ON THE CURVED ARCHITECTURAL FEATURES ON 36/F, 38/F - 39/F, 41/F - 42/F & 45/F - 47/F, PLEASE REFER TO PART PLAN OF FLAT C & FLAT D ON 36/F, 38/F - 39/F, 41/F - 42/F & 45/F - 47/F IN AL043 - AL044

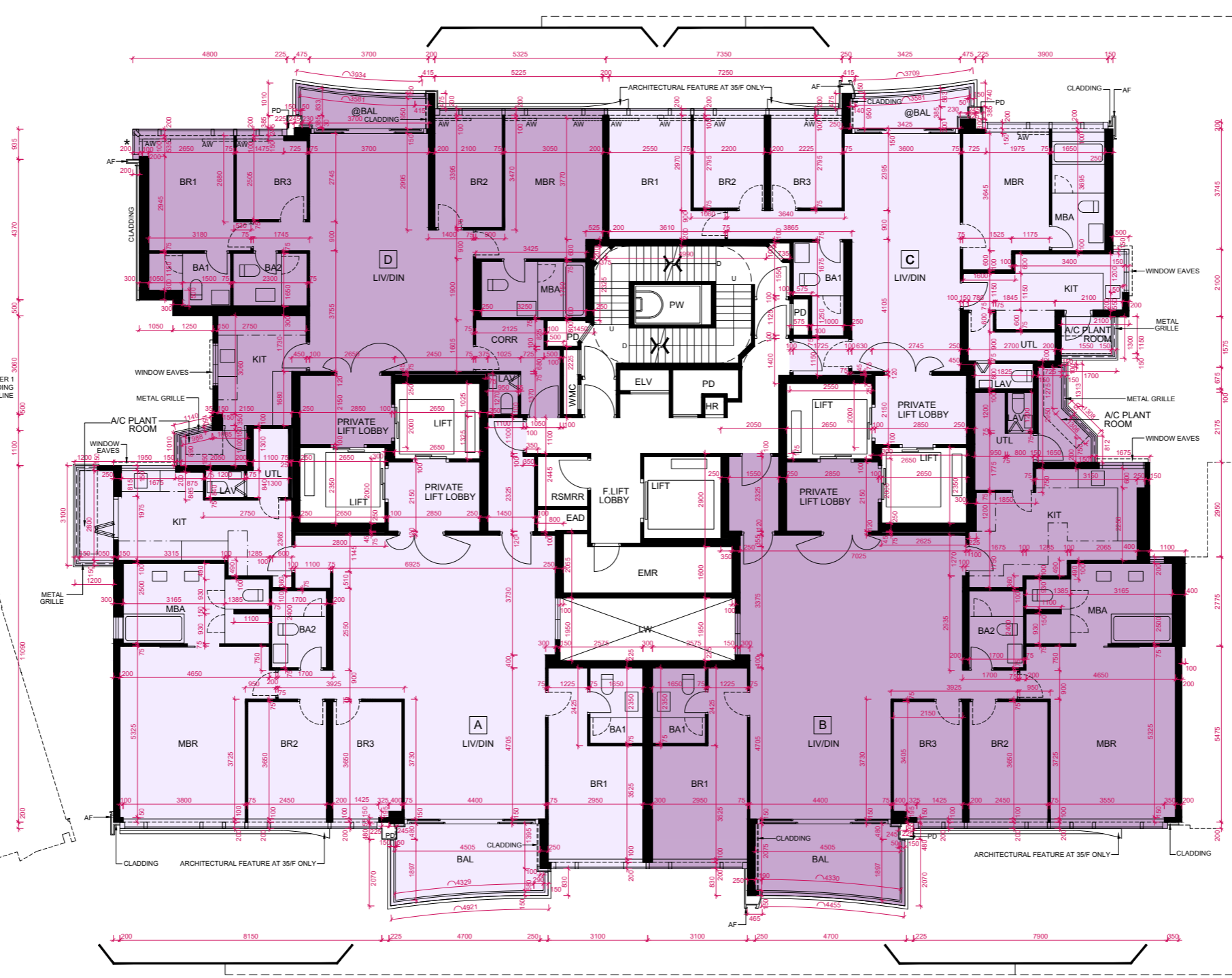
NOTES:
1. THERE IS NO CURVED ARCHITECTURAL FEATURE FOR FLAT A, FLAT B, FLAT C & FLAT D ON 37/F, 40/F & 43/F

有關位於36樓、38樓至39樓、41樓至42樓及45樓至47樓的彎形建築裝飾，請參閱AL043至AL044的36樓、38樓至39樓、41樓至42樓及45樓至47樓C單位及D單位部分平面圖

備註：
1. 37樓、40樓及43樓A單位、B單位、C單位及D單位沒有彎形建築裝飾

FOR INFORMATION ON THE CURVED ARCHITECTURAL FEATURES ON 36/F, 38/F - 39/F, 41/F - 42/F & 45/F - 47/F, PLEASE REFER TO PART PLAN OF FLAT A & FLAT B ON 36/F, 38/F - 39/F, 41/F - 42/F & 45/F - 47/F IN AL045 - AL046

有關位於36樓、38樓至39樓、41樓至42樓及45樓至47樓的彎形建築裝飾，請參閱AL045至AL046的36樓、38樓至39樓、41樓至42樓及45樓至47樓A單位及B單位部分平面圖



Scale 比例
0M(米) 5M(米) 10M(米)

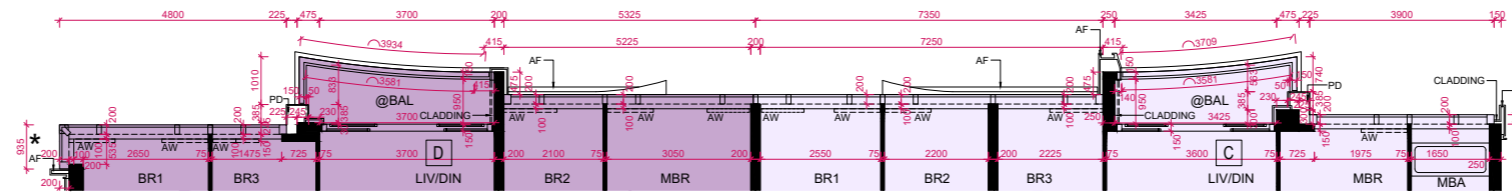
FLOOR PLANS OF RESIDENTIAL PROPERTIES IN THE PHASE

期數的住宅物業的樓面平面圖

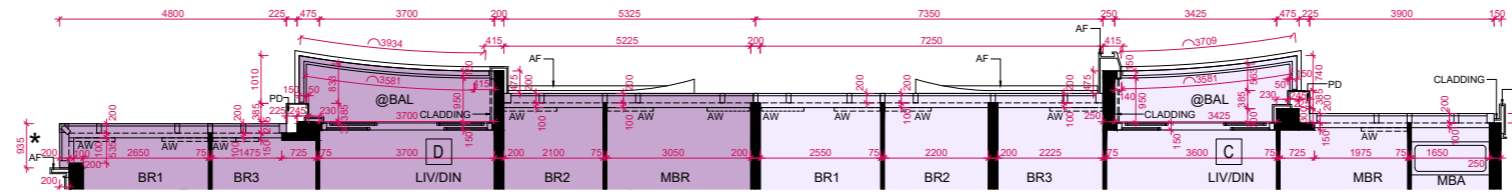
Tower 2 (Summit Tower) 35/F-43/F, 45/F-47F

第2座 (Summit Tower) 35樓至43樓, 45樓至47樓

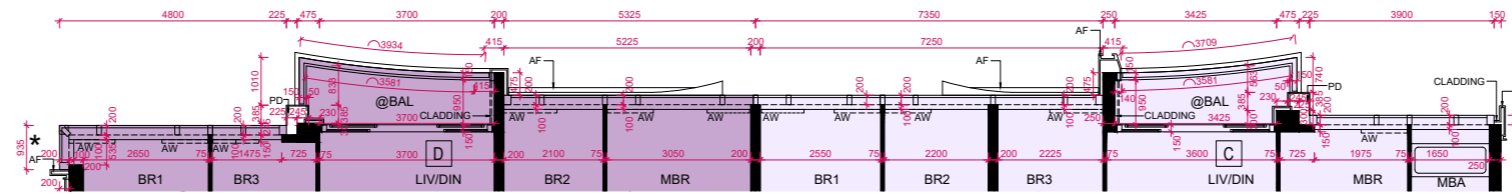
PART PLAN OF FLAT C & FLAT D ON 41/F
41樓C單位及D單位部分平面圖



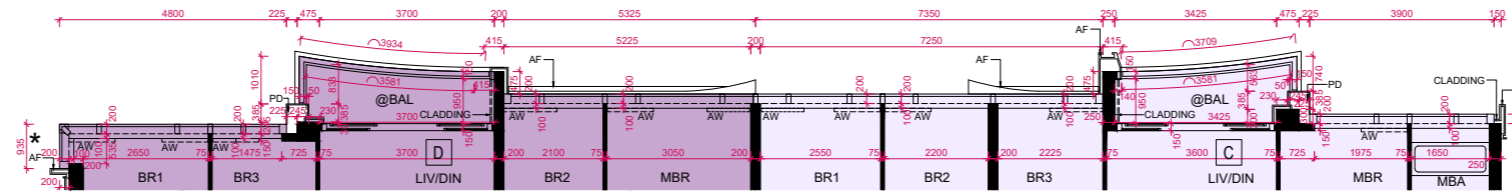
PART PLAN OF FLAT C & FLAT D ON 39/F
39樓C單位及D單位部分平面圖



PART PLAN OF FLAT C & FLAT D ON 38/F
38樓C單位及D單位部分平面圖



PART PLAN OF FLAT C & FLAT D ON 36/F
36樓C單位及D單位部分平面圖



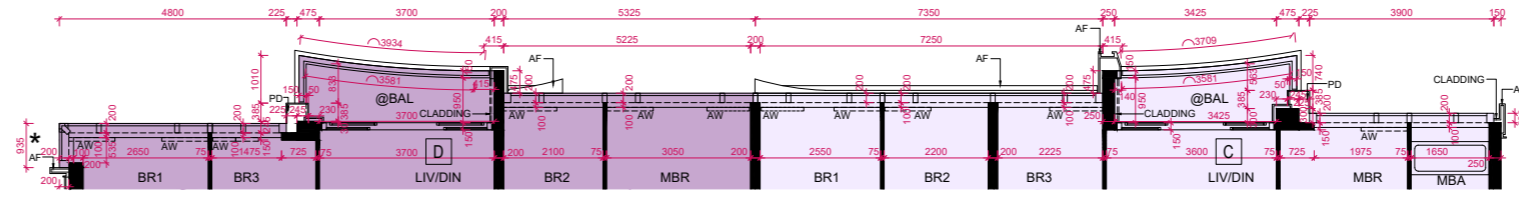
Scale 比例
0M(米) 5M(米) 10M(米)

FLOOR PLANS OF RESIDENTIAL PROPERTIES IN THE PHASE

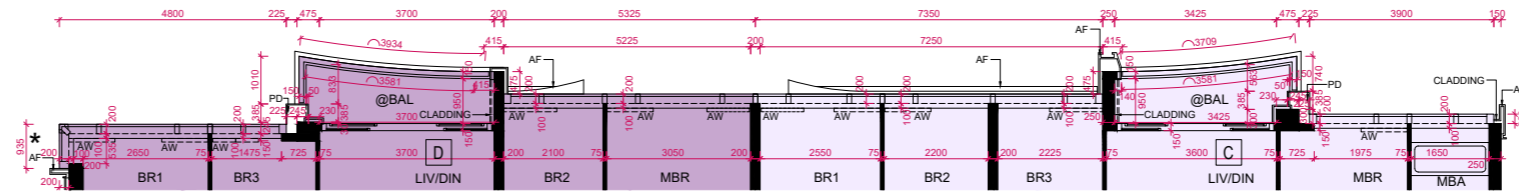
期數的住宅物業的樓面平面圖

Tower 2 (Summit Tower) 35/F-43/F, 45/F-47F 第2座 (Summit Tower) 35樓至43樓, 45樓至47樓

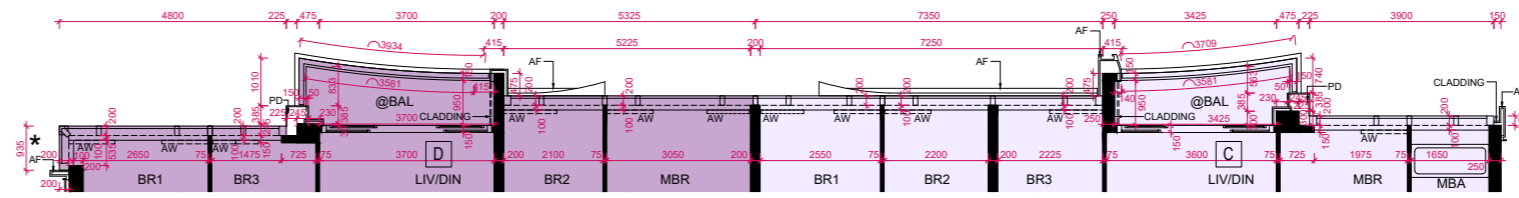
PART PLAN OF FLAT C & FLAT D ON 47/F
47樓C單位及D單位部分平面圖



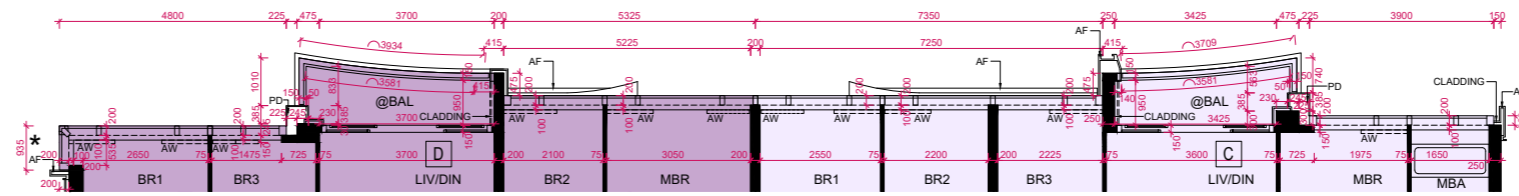
PART PLAN OF FLAT C & FLAT D ON 46/F
46樓C單位及D單位部分平面圖



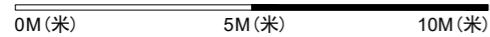
PART PLAN OF FLAT C & FLAT D ON 45/F
45樓C單位及D單位部分平面圖



PART PLAN OF FLAT C & FLAT D ON 42/F
42樓C單位及D單位部分平面圖



Scale 比例



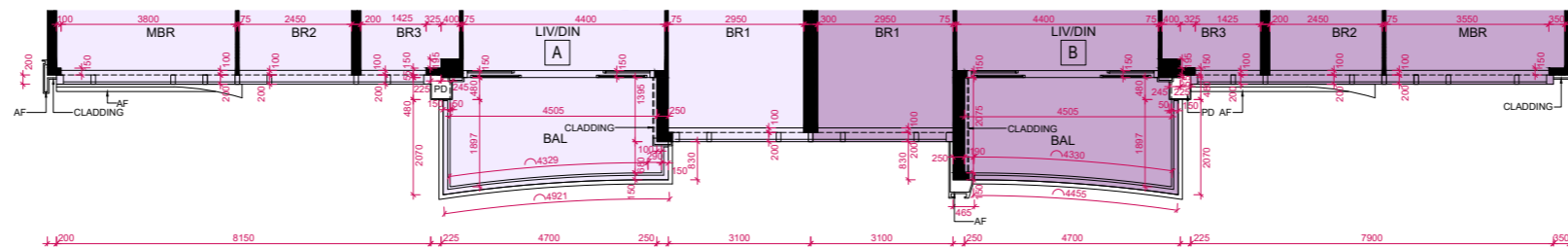
FLOOR PLANS OF RESIDENTIAL PROPERTIES IN THE PHASE

期數的住宅物業的樓面平面圖

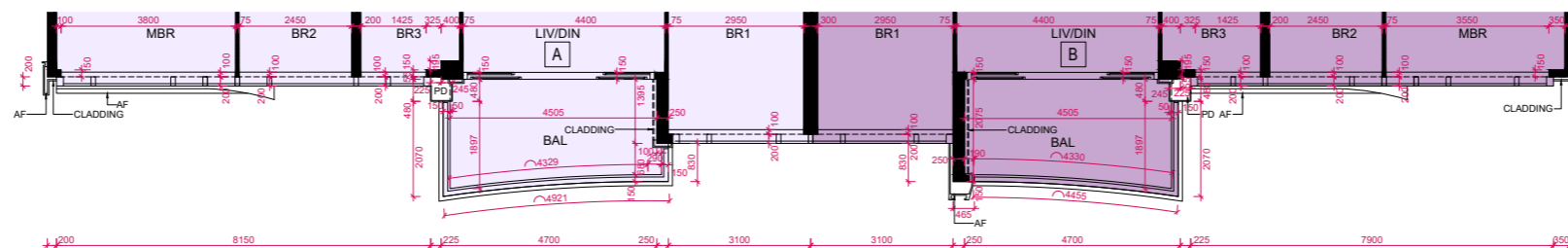
Tower 2 (Summit Tower) 35/F-43/F, 45/F-47F

第2座 (Summit Tower) 35樓至43樓, 45樓至47樓

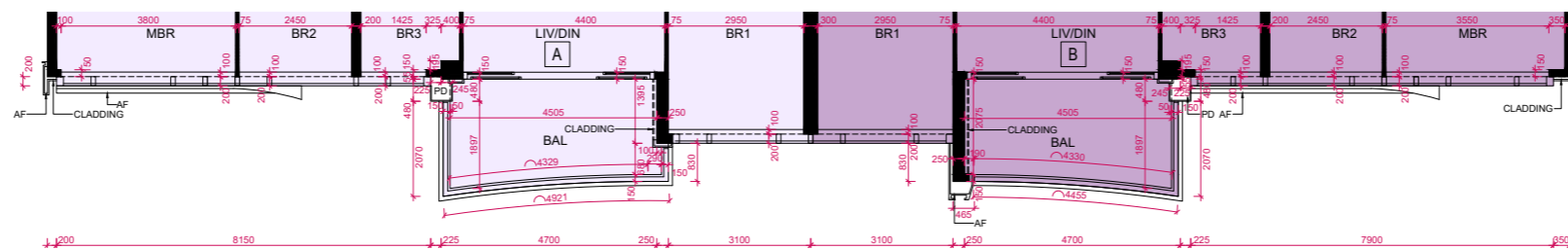
PART PLAN OF FLAT A & FLAT B ON 41/F
41樓A單位及B單位部分平面圖



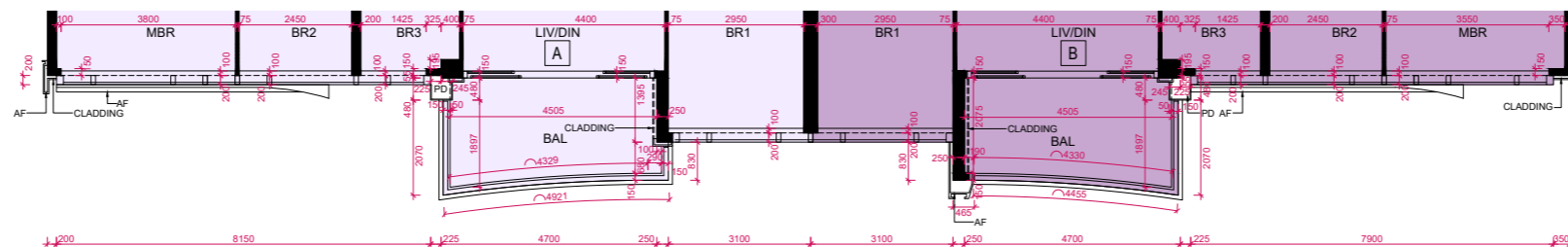
PART PLAN OF FLAT A & FLAT B ON 39/F
39樓A單位及B單位部分平面圖



PART PLAN OF FLAT A & FLAT B ON 38/F
38樓A單位及B單位部分平面圖



PART PLAN OF FLAT A & FLAT B ON 36/F
36樓A單位及B單位部分平面圖



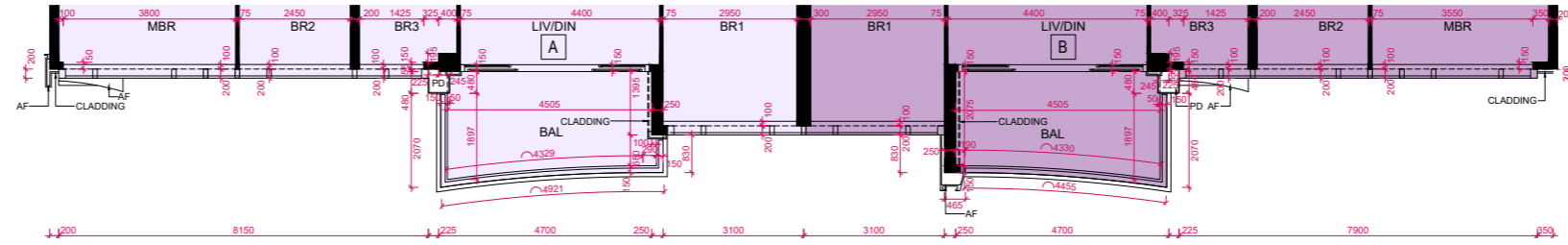
Scale 比例
0M(米) 5M(米) 10M(米)

FLOOR PLANS OF RESIDENTIAL PROPERTIES IN THE PHASE

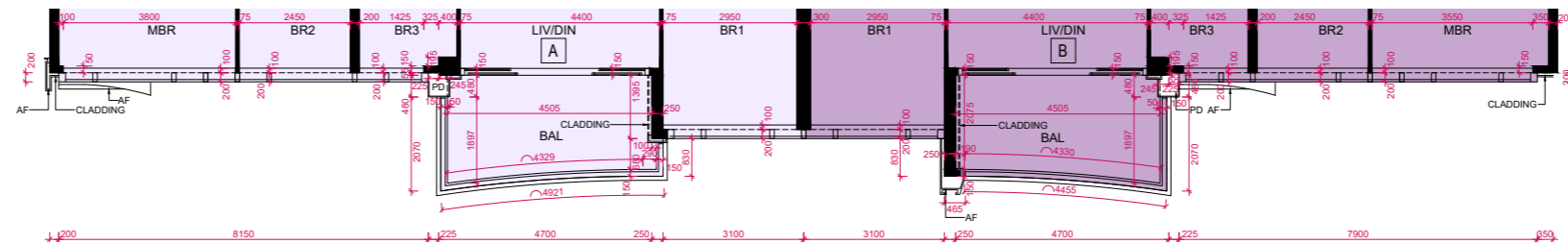
期數的住宅物業的樓面平面圖

Tower 2 (Summit Tower) 35/F-43/F, 45/F-47F 第2座 (Summit Tower) 35樓至43樓, 45樓至47樓

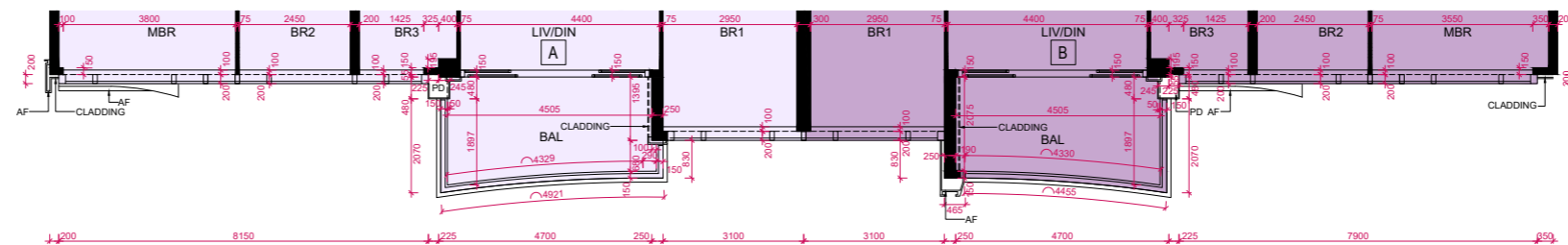
PART PLAN OF FLAT A & FLAT B ON 47/F
47樓A單位及B單位部分平面圖



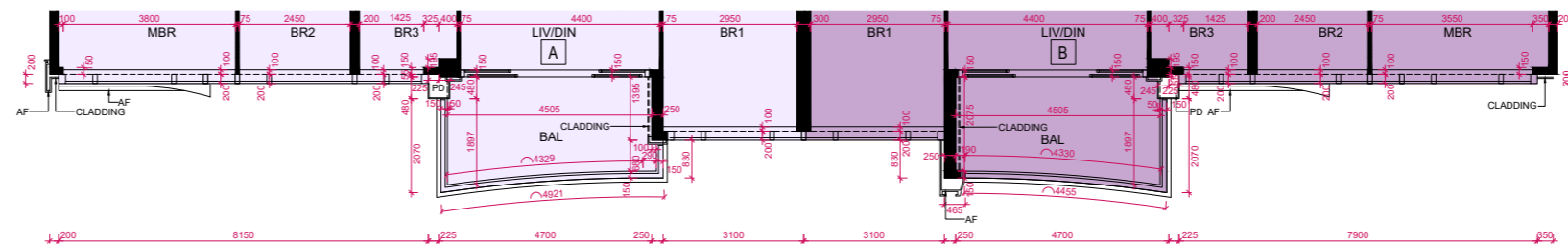
PART PLAN OF FLAT A & FLAT B ON 46/F
46樓A單位及B單位部分平面圖



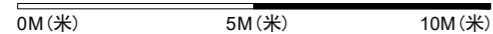
PART PLAN OF FLAT A & FLAT B ON 45/F
45樓A單位及B單位部分平面圖



PART PLAN OF FLAT A & FLAT B ON 42/F
42樓A單位及B單位部分平面圖



Scale 比例



FLOOR PLANS OF RESIDENTIAL PROPERTIES IN THE PHASE

期數的住宅物業的樓面平面圖

Block Name 大廈名稱	Floor 樓層	Flat 單位	The floor-to-floor height of each residential property (mm) 每個住宅物業的層與層之間的高度(毫米)	The thickness of the floor slabs (excluding plaster) of each residential property (mm) 每個住宅物業的樓板(不包括灰泥)的厚度(毫米)
Tower 2 (Summit Tower) 第2座 (Summit Tower)	48/F 48樓	Premier Sky Villa A	3050, 3100, 3150, 3200, 3250, 3500	200, 250
		Premier Sky Villa B	3150, 3200, 3250, 3500	200, 250

The internal areas of the residential properties on the upper floors will generally be slightly larger than those on the lower floors because of the reducing thickness of the structural walls on the upper floors. (This does not apply to the residential properties in the Phase because the design of the Phase does not involve reducing thickness of structural walls of residential properties on the upper floors.)
因住宅物業的較高樓層的結構牆的厚度遞減，較高樓層的內部面積，一般比較低樓層的內部面積稍大。(不適用於期數內的住宅物業，因期數的設計並不牽涉住宅物業的較高樓層的結構牆的厚度遞減。)

Notes:

1. The dimensions of the floor plan are all structural dimensions in millimetres.
2. Please refer to Pages AL001-003 of this sales brochure for the legend of the terms and abbreviations shown on the floor plans and notes that are applicable thereto.

備註:

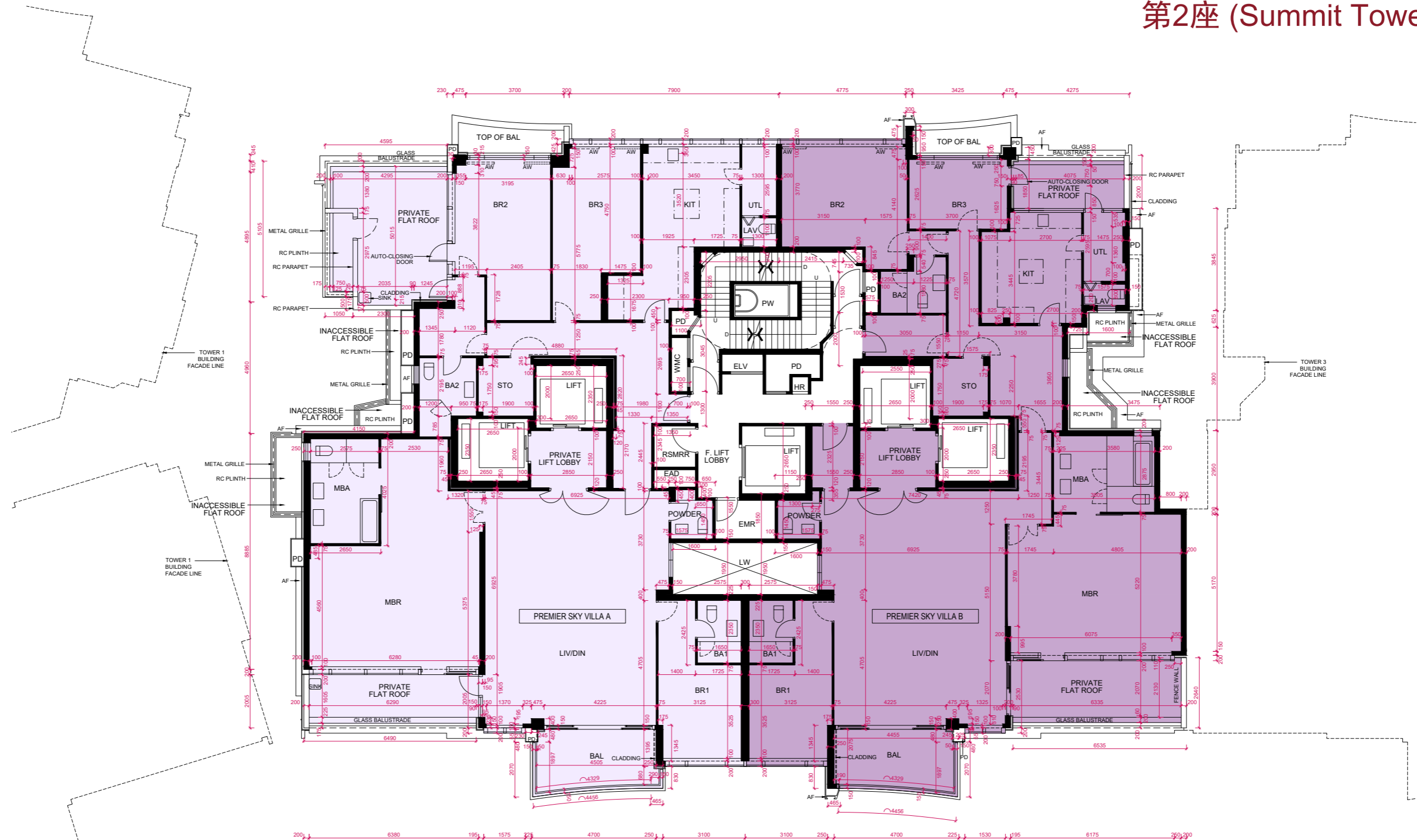
1. 樓面平面圖所列之尺寸為以毫米標示之建築結構尺寸。
2. 樓面平面圖中顯示之名詞及簡稱之圖例及其適用的備註，請參閱本售樓說明書第AL001至003頁。

FLOOR PLANS OF RESIDENTIAL PROPERTIES IN THE PHASE

期數的住宅物業的樓面平面圖

Tower 2 (Summit Tower) 48/F

第2座 (Summit Tower) 48樓



Scale 比例
 0M (米) 5M (米) 10M (米)

FLOOR PLANS OF RESIDENTIAL PROPERTIES IN THE PHASE

期數的住宅物業的樓面平面圖

Block Name 大廈名稱	Floor 樓層	Flat 單位	The floor-to-floor height of each residential property (mm) 每個住宅物業的層與層之間的高度(毫米)	The thickness of the floor slabs (excluding plaster) of each residential property (mm) 每個住宅物業的樓板(不包括灰泥)的厚度(毫米)
Tower 2 (Summit Tower) 第2座 (Summit Tower)	49/F 49樓	Premier Sky House A	3600, 3650, 3700, 4000	150, 200, 250, 350
		Premier Sky House B	3600, 3650, 3700, 4000	150, 200, 225, 350

The internal areas of the residential properties on the upper floors will generally be slightly larger than those on the lower floors because of the reducing thickness of the structural walls on the upper floors. (This does not apply to the residential properties in the Phase because the design of the Phase does not involve reducing thickness of structural walls of residential properties on the upper floors.)
因住宅物業的較高樓層的結構牆的厚度遞減，較高樓層的內部面積，一般比較低樓層的內部面積稍大。(不適用於期數內的住宅物業，因期數的設計並不牽涉住宅物業的較高樓層的結構牆的厚度遞減。)

Notes:

- The dimensions of the floor plan are all structural dimensions in millimetres.
- Please refer to Pages AL001-003 of this sales brochure for the legend of the terms and abbreviations shown on the floor plans and notes that are applicable thereto.

備註:

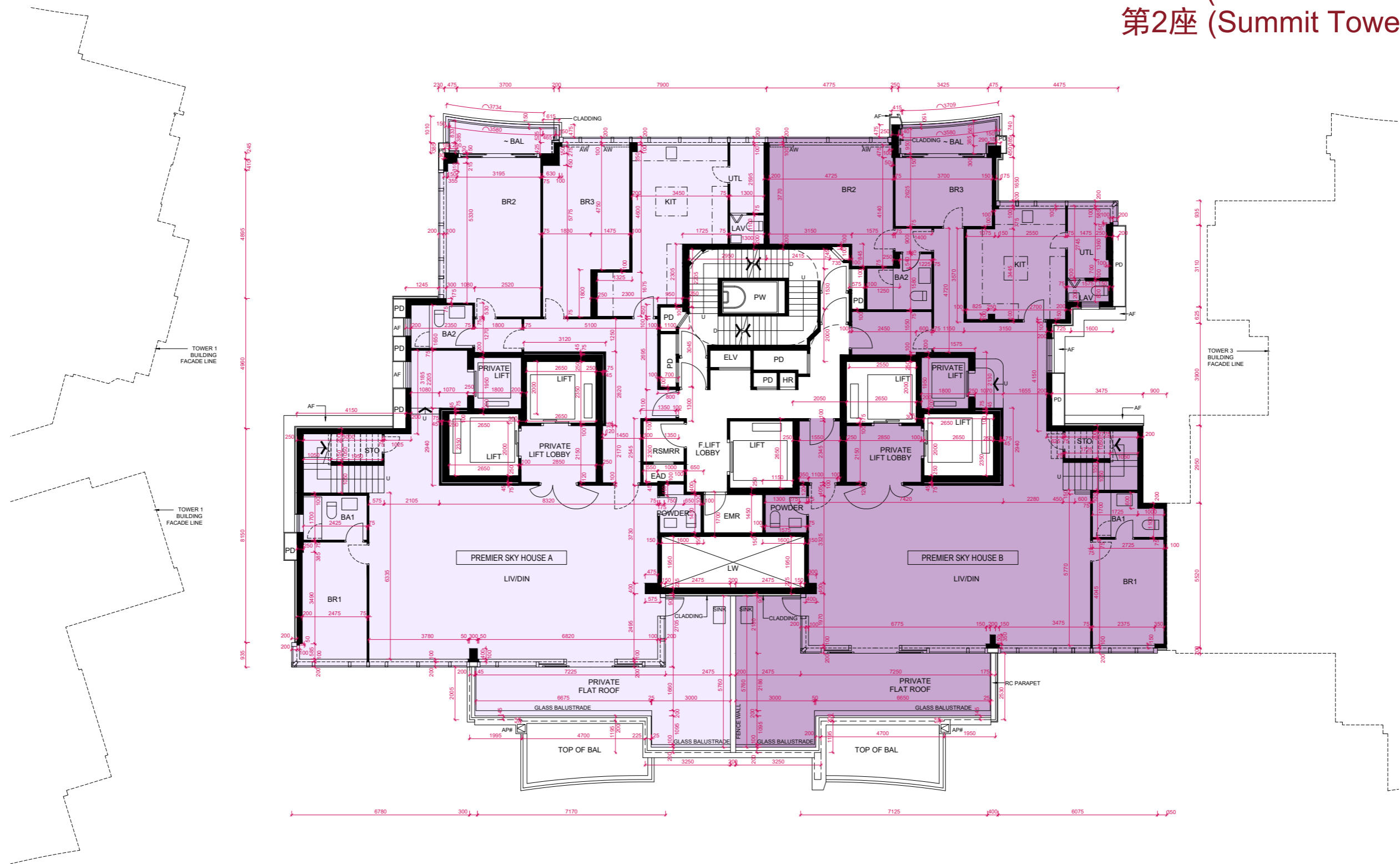
- 樓面平面圖所列之尺寸為以毫米標示之建築結構尺寸。
- 樓面平面圖中顯示之名詞及簡稱之圖例及其適用的備註，請參閱本售樓說明書第AL001至003頁。

FLOOR PLANS OF RESIDENTIAL PROPERTIES IN THE PHASE

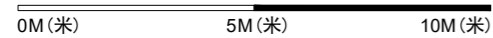
期數的住宅物業的樓面平面圖

Tower 2 (Summit Tower) 49/F

第2座 (Summit Tower) 49樓



Scale 比例



FLOOR PLANS OF RESIDENTIAL PROPERTIES IN THE PHASE

期數的住宅物業的樓面平面圖

Block Name 大廈名稱	Floor 樓層	Flat 單位	The floor-to-floor height of each residential property (mm) 每個住宅物業的層與層之間的高度(毫米)	The thickness of the floor slabs (excluding plaster) of each residential property (mm) 每個住宅物業的樓板(不包括灰泥)的厚度(毫米)
Tower 2 (Summit Tower) 第2座 (Summit Tower)	50/F 50樓	Premier Sky House A	3500	200, 250
		Premier Sky House B	3500	200, 250

The internal areas of the residential properties on the upper floors will generally be slightly larger than those on the lower floors because of the reducing thickness of the structural walls on the upper floors. (This does not apply to the residential properties in the Phase because the design of the Phase does not involve reducing thickness of structural walls of residential properties on the upper floors.)
因住宅物業的較高樓層的結構牆的厚度遞減，較高樓層的內部面積，一般比較低樓層的內部面積稍大。(不適用於期數內的住宅物業，因期數的設計並不牽涉住宅物業的較高樓層的結構牆的厚度遞減。)

Notes:

1. The dimensions of the floor plan are all structural dimensions in millimetres.
2. Please refer to Pages AL001-003 of this sales brochure for the legend of the terms and abbreviations shown on the floor plans and notes that are applicable thereto.

備註:

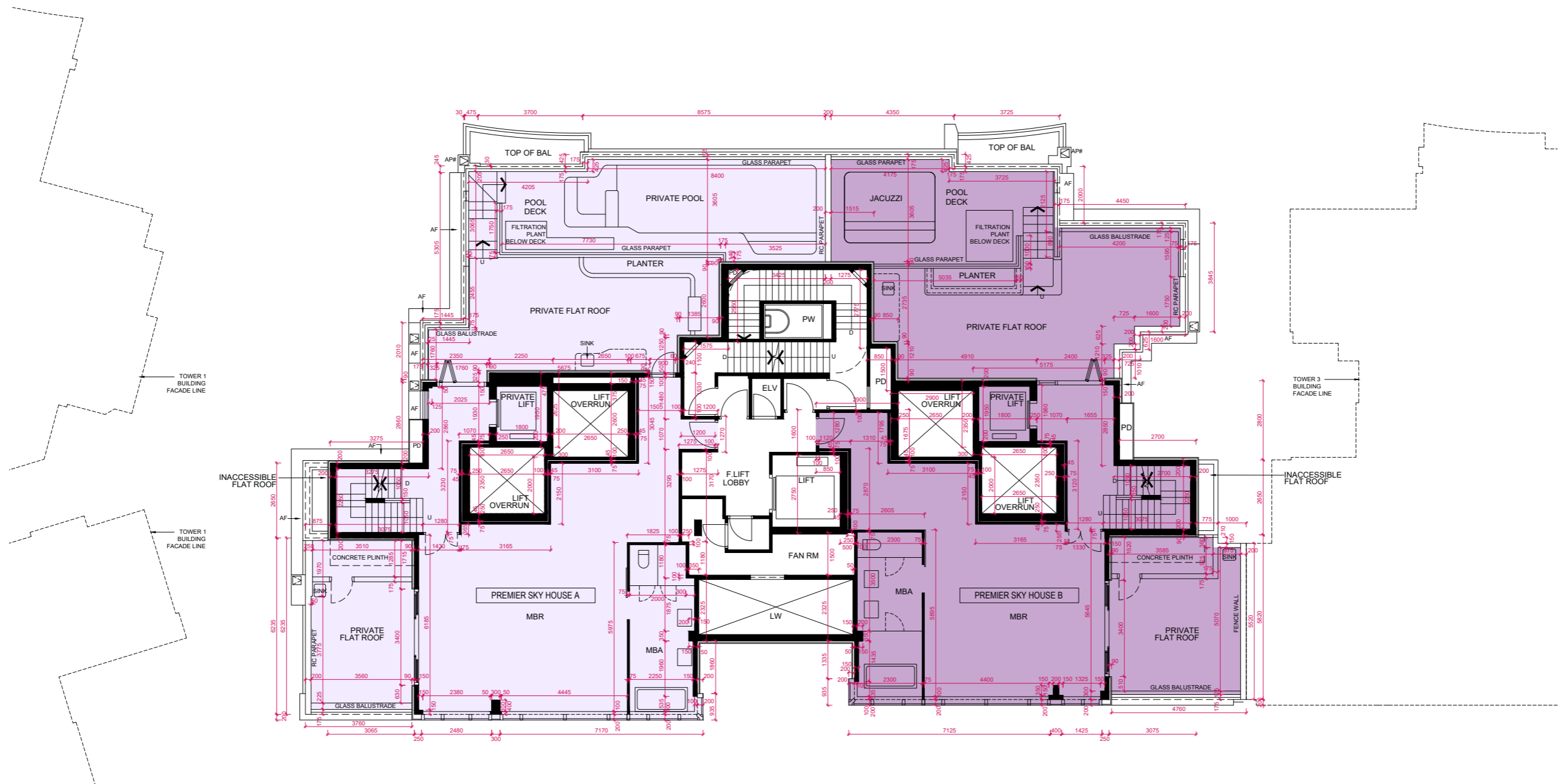
1. 樓面平面圖所列之尺寸為以毫米標示之建築結構尺寸。
2. 樓面平面圖中顯示之名詞及簡稱之圖例及其適用的備註，請參閱本售樓說明書第AL001至003頁。

FLOOR PLANS OF RESIDENTIAL PROPERTIES IN THE PHASE

期數的住宅物業的樓面平面圖

Tower 2 (Summit Tower) 50/F

第2座 (Summit Tower) 50樓



Scale 比例

0M (米) 5M (米) 10M (米)

FLOOR PLANS OF RESIDENTIAL PROPERTIES IN THE PHASE

期數的住宅物業的樓面平面圖

Block Name 大廈名稱	Floor 樓層	Flat 單位	The floor-to-floor height of each residential property (mm) 每個住宅物業的層與層之間的高度(毫米)	The thickness of the floor slabs (excluding plaster) of each residential property (mm) 每個住宅物業的樓板(不包括灰泥)的厚度(毫米)
Tower 2 (Summit Tower) 第2座 (Summit Tower)	Main Roof 天台	Premier Sky House A	3200	200
		Premier Sky House B	3200	175

The internal areas of the residential properties on the upper floors will generally be slightly larger than those on the lower floors because of the reducing thickness of the structural walls on the upper floors. (This does not apply to the residential properties in the Phase because the design of the Phase does not involve reducing thickness of structural walls of residential properties on the upper floors.)
因住宅物業的較高樓層的結構牆的厚度遞減，較高樓層的內部面積，一般比較低樓層的內部面積稍大。(不適用於期數內的住宅物業，因期數的設計並不牽涉住宅物業的較高樓層的結構牆的厚度遞減。)

Notes:

1. The dimensions of the floor plan are all structural dimensions in millimetres.
2. Please refer to Pages AL001-003 of this sales brochure for the legend of the terms and abbreviations shown on the floor plans and notes that are applicable thereto.

備註:

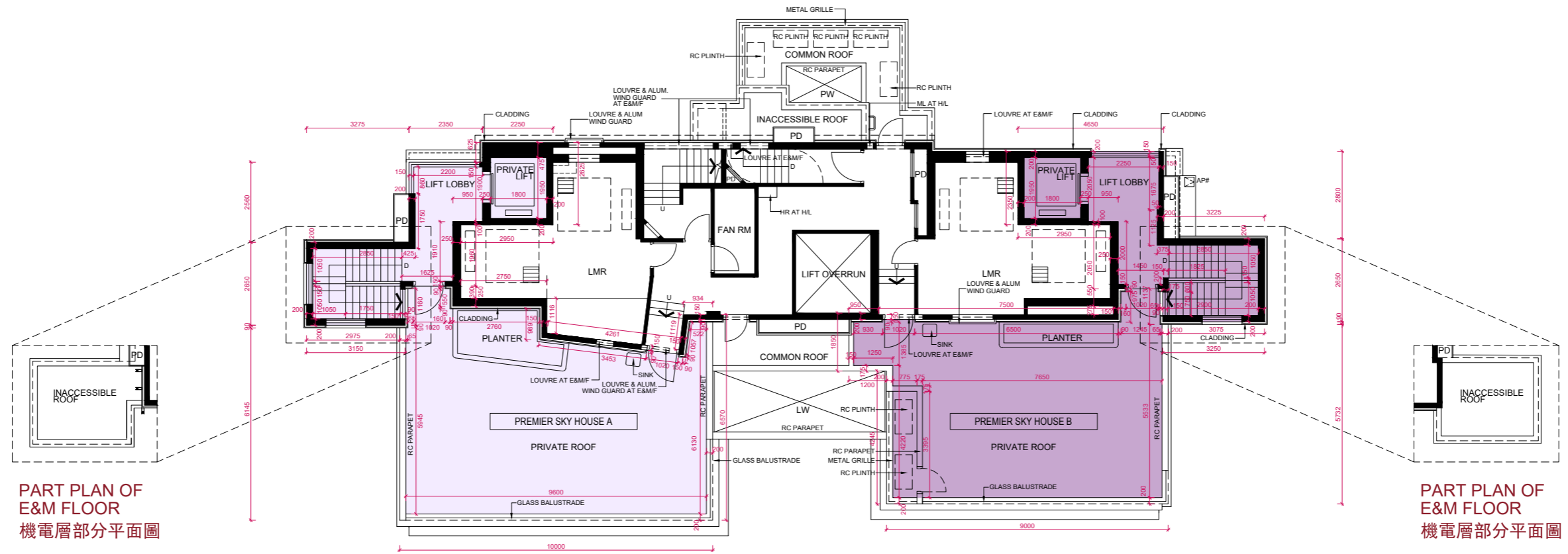
1. 樓面平面圖所列之尺寸為以毫米標示之建築結構尺寸。
2. 樓面平面圖中顯示之名詞及簡稱之圖例及其適用的備註，請參閱本售樓說明書第AL001至003頁。

FLOOR PLANS OF RESIDENTIAL PROPERTIES IN THE PHASE

期數的住宅物業的樓面平面圖

Tower 2 (Summit Tower) Main Roof

第2座 (Summit Tower) 天台



PART PLAN OF
E&M FLOOR
機電層部分平面圖

PART PLAN OF
E&M FLOOR
機電層部分平面圖



Scale 比例
0M(米) 5M(米) 10M(米)