

在本頁上之備註和圖例適用於全部的「發展項目的住宅物業的樓面平面圖」頁數。

The remarks and legends on this page apply to all pages of "Floor plans of residential properties in the development".

樓面平面圖圖例

Legends of the Floor Plans

A/C Platform = Air-conditioner Platform 冷氣機平台

A/C Unit = Air-conditioning Unit 冷氣機

A.D. = Air Duct 風槽

A.F. = Architectural Feature 建築裝飾

BAL. & U.P. = Balcony and Utility Platform 露台及工作平台

BATH = Bathroom 浴室

BED RM. = Bedroom 睡房

CORR. = Corridor 走廊

DN = Down 落

DOGHOUSE = Mechanical & Electrical Services Duct connecting to the Floor Below 連接下層的機電設施管道

E.M.C. = Electric Meter Cabinet 電錶櫃

ELEC. RM. = Electricity Room 機電房

ELV ROOM = Extra Low Voltage Room 特低壓電房

F.H. = Fire Hydrant 消防栓

F.S.P.D. = Fire Services Pipe Duct 消防管道

FAN RM. = Fan Room 風機房

H.R. = Hose Reel 消防喉轆

H/L = High Level 高位

KIT. = Kitchen 廚房

LAV. = Lavatory 洗手間

LIV./DIN. = Living Room / Dining Room 客廳/飯廳

M. BATH = Master Bathroom 主人浴室

M. BED RM. = Master Bedroom 主人睡房

MAID RM. = Maid Room 傭人房

OPEN KIT. = Open Kitchen 開放式廚房

P.D. = Pipe Duct 管道

R.S.&M.R.R. = Refuse Storage and Material Recovery Room 垃圾及物料回收室

RC PLINTH = Reinforced Concrete Plinth 鋼筋混凝土底座

STORE = Store Room 儲物室

T.R.S. = Temporary Refuge Space 臨時庇護處

W.M.C. = Water Meter Cabinet 水錶櫃

 = Built-in fittings provided in the flats 隨樓附送嵌入式裝置

備註：

1. 部分住宅物業的露台、工作平台、平台或外牆或設有外露之公用喉管，或外牆裝飾板內藏之公用喉管。
2. 部分住宅物業內之部分天花或有跌級樓板，用以安裝上層之機電設備或配合上層之結構、建築設計及/或裝修設計上的需要。
3. 部分住宅物業內或設有假陣或假天花用以安裝冷氣喉管及/或其他機電設備。
4. 平面圖所列之數字為以毫米標示之建築結構尺寸。
5. 各住宅物業的樓面平面圖內所展示之裝置及設備的圖標如浴缸、洗手盆、座廁、淋浴間、洗滌盆、櫃(如有)等乃根據最新經批准的建築圖則擬備，其形狀、尺寸、比例或與實際提供的裝置及設備存在差異，僅供示意及參考之用。

Remarks:

1. Common pipes exposed or enclosed in cladding may be located at the balcony, utility platform, flat roof or external wall of some residential properties.
2. There may be sunken slabs at some parts of the ceiling inside some residential properties for the installation of mechanical and electrical services of the floor above or due to the structural, architectural and/or decoration design requirements of the floor above.
3. There may be ceiling bulkheads or false ceiling inside some residential properties for the installation of air-conditioning conduits and/or other mechanical and electrical services.
4. The dimensions of the floor plans are all structural dimensions in millimeter.
5. Those icons of fittings and fitments shown on the floor plans of residential properties like bathtubs, wash basins, water closets, shower cubicles, sink units, cabinets (if any) etc. are prepared in accordance with the latest approved building plans. Their shapes, dimensions, scales may be differed from the fittings and fitments actually provided and they are for indication and reference only.

10 發展項目的住宅物業的樓面平面圖 FLOOR PLANS OF RESIDENTIAL PROPERTIES IN THE DEVELOPMENT

3樓平面圖 3/F Floor Plan



因住宅物業的較高樓層的結構牆的厚度遞減，較高樓層的內部面積，一般比較低樓層的內部面積稍大。

請參閱本售樓說明書第26頁為住宅物業樓面平面圖而設之備註及名詞及簡稱的圖例。

備註：

1. 平面圖所列的數字為以毫米標示之建築結構尺寸。
2. 平台空白位置為供維修大廈設備使用的公用地方。

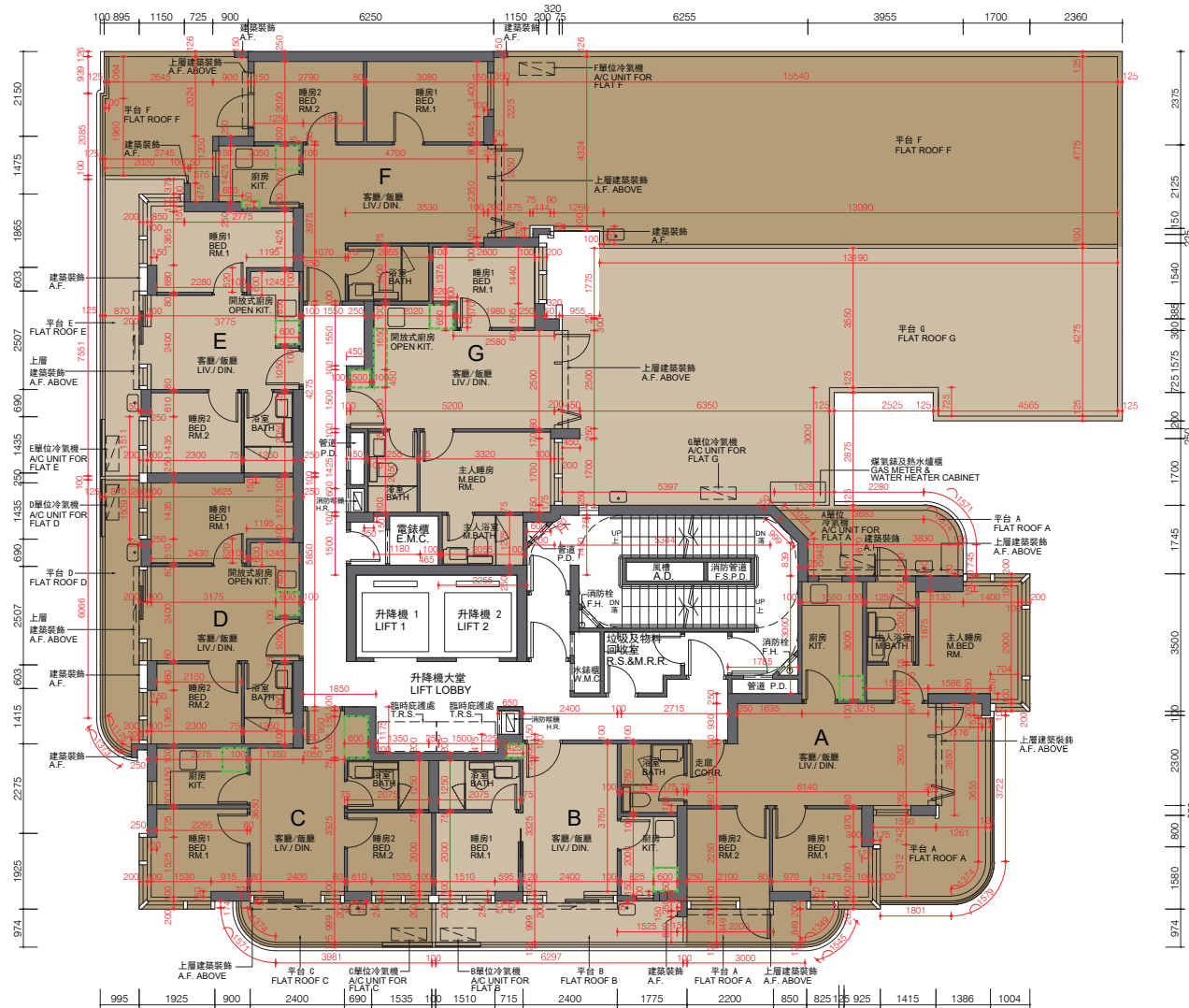
The internal areas of the residential properties on the upper floors will generally be slightly larger than those on the lower floors because of the reducing thickness of the structural walls on the upper floors.

Please refer to page 26 of this sales brochure for the remarks and legends of the terms and abbreviations for the floor plans of residential properties.

Note:

1. The dimensions in floor plans are all structural dimensions in millimeter.
2. Blank areas on the flat roof are common areas for building facility maintenance.

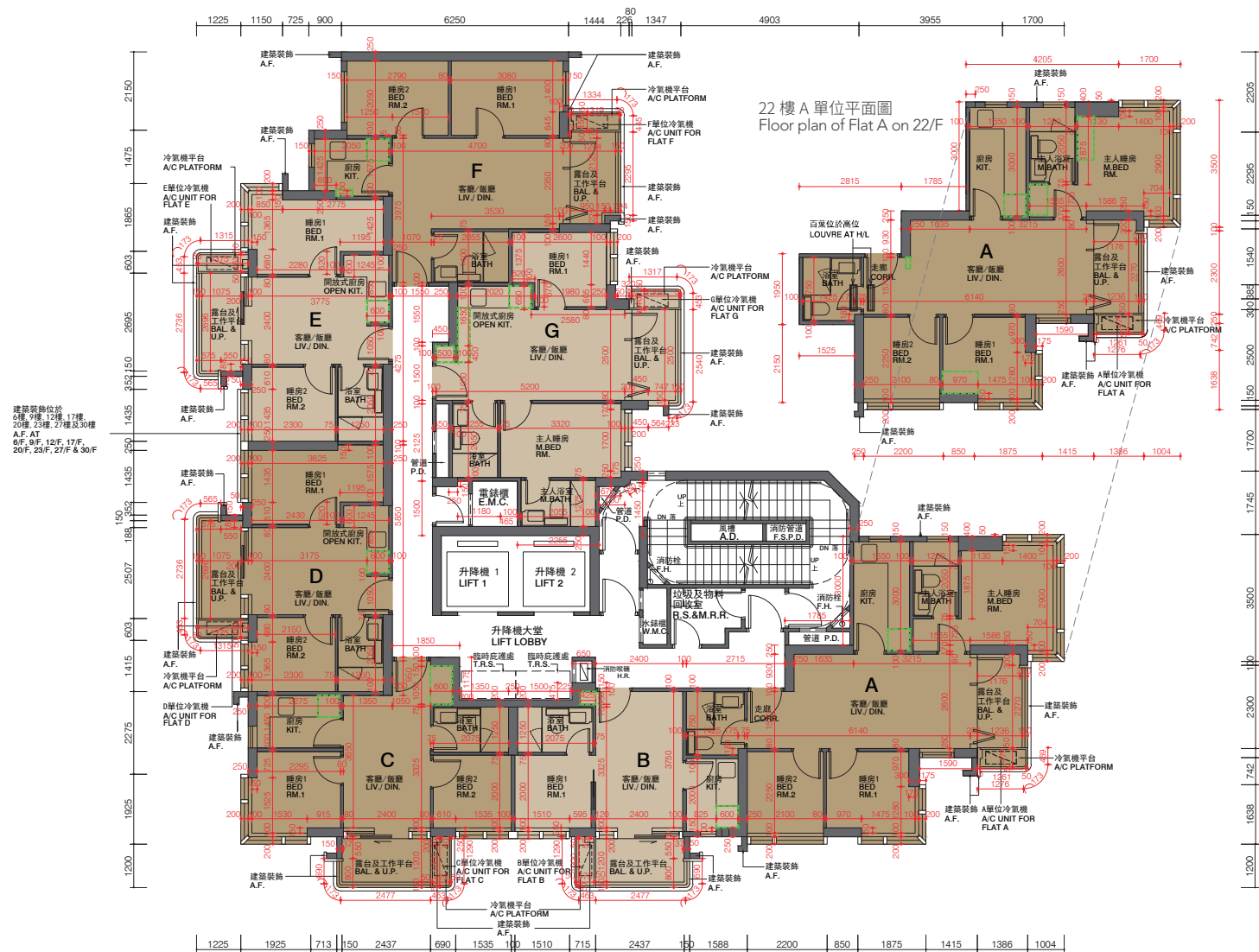
每個住宅物業 Each Residential Property	單位 Flat 樓層 Floor	樓層 Floor						
		A	B	C	D	E	F	G
層與層之間的高度 (毫米) Floor-to-Floor Height (mm)	3樓 3/F	3500	3500	3500	3500	3500	3500	3500
樓板 (不包括灰泥) 的厚度 (毫米) Thickness of Floor Slab (excluding plaster) (mm)		160	160	160	160	160	160	160



比例 Scale: 0米/M 5米/M

10 發展項目的住宅物業的樓面平面圖 FLOOR PLANS OF RESIDENTIAL PROPERTIES IN THE DEVELOPMENT

5樓-12樓、15樓-23樓及25樓-29樓平面圖
5/F-12/F, 15/F-23/F & 25/F-29/F Floor Plan



建築裝飾位於
6樓、9樓、12樓、17樓、
20樓、23樓、27樓及30樓
A.F. AT
6/F, 9/F, 12/F, 17/F,
20/F, 23/F, 27/F & 30/F

0米/M 5米/M
比例 Scale:

因住宅物業的較高樓層的結構牆的厚度遞減，較高樓層的內部面積，一般比較低樓層的內部面積稍大。

請參閱本售樓說明書第26頁為住宅物業樓面平面圖而設之備註及名詞及簡稱的圖例。

備註：
平面圖所列的數字為以毫米標示之建築結構尺寸。

The internal areas of the residential properties on the upper floors will generally be slightly larger than those on the lower floors because of the reducing thickness of the structural walls on the upper floors.

Please refer to page 26 of this sales brochure for the remarks and legends of the terms and abbreviations for the floor plans of residential properties.

Note:
The dimensions in floor plans are all structural dimensions in millimeter.

每個住宅物業 Each Residential Property	單位 Flat 樓層 Floor	A	B	C	D	E	F	G
		層與層之間的高度 (毫米) Floor-to-Floor Height (mm)	5樓-12樓、 15樓-23樓及 25樓-28樓 5/F-12/F, 15/F-23/F & 25/F-28/F	3500	3500	3500	3500	3500
	29樓 29/F	3500, 3640, 3800, 3840	3500, 3840	3500, 3800, 3840	3500, 3840	3190, 3500, 3530, 3840	3500, 3800, 3840	3500, 3640, 3840
樓板(不包括灰 泥)的厚度 (毫米) Thickness of Floor Slab (excluding plaster) (mm)	5樓-12樓、 15樓-23樓及 25樓-28樓 5/F-12/F, 15/F-23/F & 25/F-28/F	160	160	160	160	160	160	160
	29樓 29/F	160, 500%, 700%	160, 500%	160, 360%, 500%, 700%	160, 500%, 700%	160, 500%	160, 500%	160, 360%, 500%, 700%

% 包括結構轉換層厚度
% Inclusive of the thickness of transfer plate

10 發展項目的住宅物業的樓面平面圖 FLOOR PLANS OF RESIDENTIAL PROPERTIES IN THE DEVELOPMENT

30樓平面圖

30/F Floor Plan



因住宅物業的較高樓層的結構牆的厚度遞減，較高樓層的內部面積，一般比較低樓層的內部面積稍大。

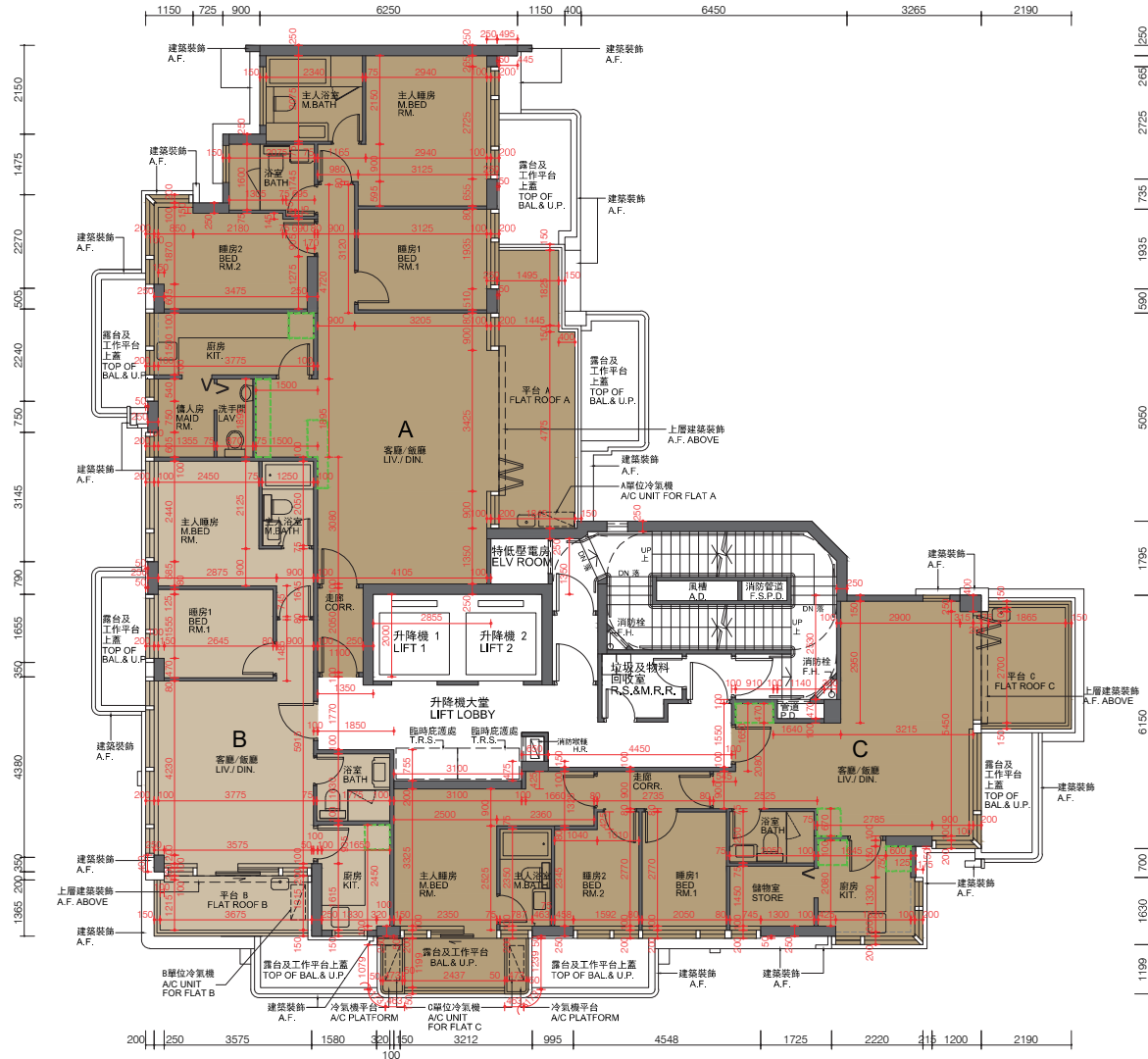
請參閱本售樓說明書第26頁為住宅物業樓面平面圖而設之備註及名詞及簡稱的圖例。

備註：
平面圖所列的數字為以毫米標示之建築結構尺寸。

The internal areas of the residential properties on the upper floors will generally be slightly larger than those on the lower floors because of the reducing thickness of the structural walls on the upper floors.

Please refer to page 26 of this sales brochure for the remarks and legends of the terms and abbreviations for the floor plans of residential properties.

Note:
The dimensions in floor plans are all structural dimensions in millimeter.



每個住宅物業 Each Residential Property	單位 Flat 樓層 Floor	A	B	C
層與層之間的高度 (毫米) Floor-to-Floor Height (mm)	30 樓 30/F	3160, 3500	3160, 3460, 3500	3160, 3200, 3360, 3460, 3500
樓板 (不包括灰泥) 的厚度 (毫米) Thickness of Floor Slab (excluding plaster) (mm)		150	150	150

31樓平面圖
31/F Floor Plan



因住宅物業的較高樓層的結構牆的厚度遞減，較高樓層的內部面積，一般比較低樓層的內部面積稍大。

請參閱本售樓說明書第26頁為住宅物業樓面平面圖而設之備註及名詞及簡稱的圖例。

備註：
平面圖所列的數字為以毫米標示之建築結構尺寸。

The internal areas of the residential properties on the upper floors will generally be slightly larger than those on the lower floors because of the reducing thickness of the structural walls on the upper floors.

Please refer to page 26 of this sales brochure for the remarks and legends of the terms and abbreviations for the floor plans of residential properties.

Note:
The dimensions in floor plans are all structural dimensions in millimeter.

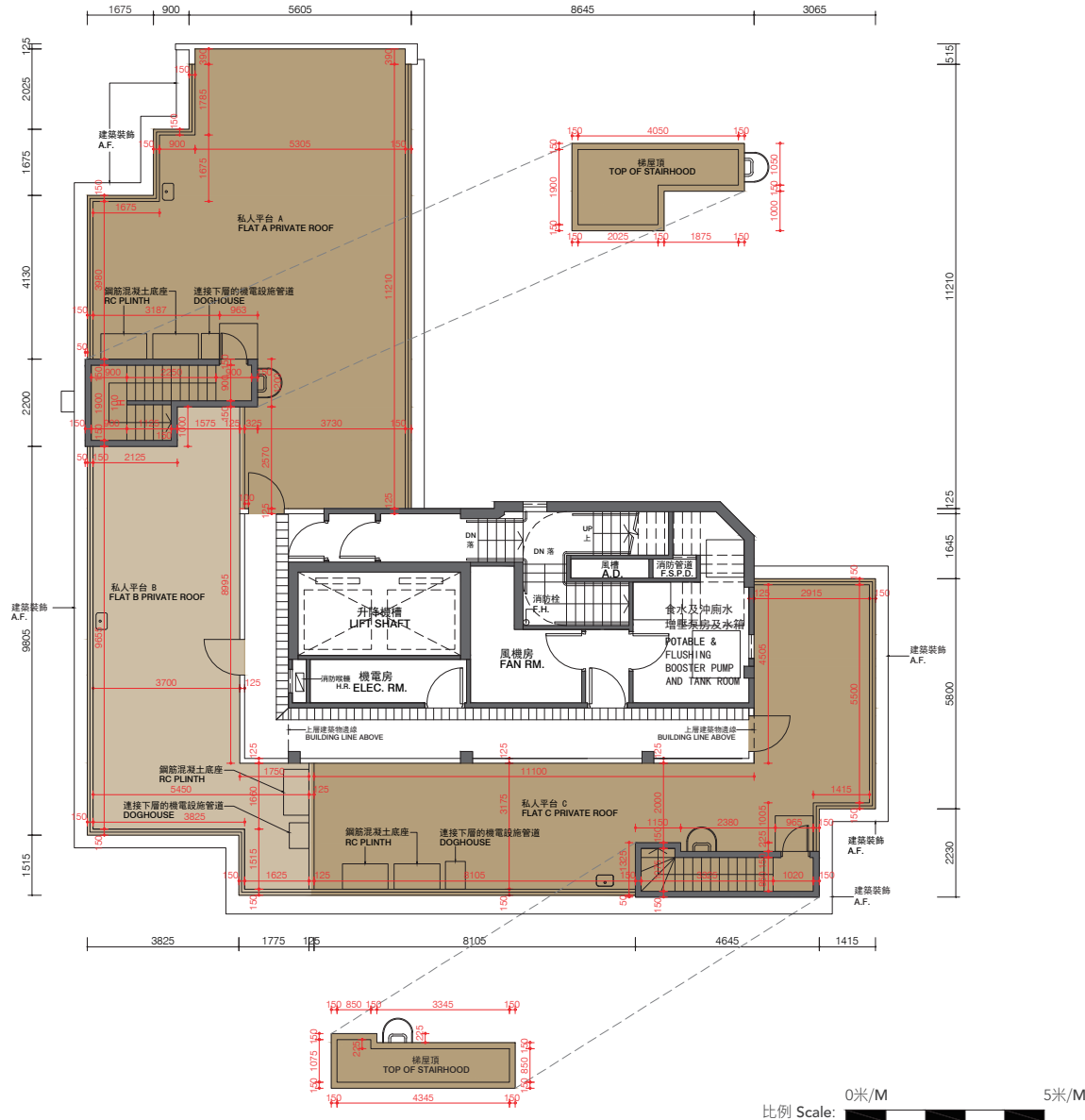


0米/M 5米/M
比例 Scale:

每個住宅物業 Each Residential Property	單位 Flat 樓層 Floor	A	B	C
層與層之間的高度 (毫米) Floor-to-Floor Height (mm)	31 樓 31/F	3660	3660	3660
樓板 (不包括灰泥) 的厚度 (毫米) Thickness of Floor Slab (excluding plaster) (mm)		175	175	175

10 發展項目的住宅物業的樓面平面圖 FLOOR PLANS OF RESIDENTIAL PROPERTIES IN THE DEVELOPMENT

天台平面圖
Roof Floor Plan



因住宅物業的較高樓層的結構牆的厚度遞減，較高樓層的內部面積，一般比較低樓層的內部面積稍大。

請參閱本售樓說明書第26頁為住宅物業樓面平面圖而設之備註及名詞及簡稱的圖例。

備註：
平面圖所列的數字為以毫米標示之建築結構尺寸。

The internal areas of the residential properties on the upper floors will generally be slightly larger than those on the lower floors because of the reducing thickness of the structural walls on the upper floors.

Please refer to page 26 of this sales brochure for the remarks and legends of the terms and abbreviations for the floor plans of residential properties.

Note:
The dimensions in floor plans are all structural dimensions in millimeter.

每個住宅物業 Each Residential Property	單位 Flat			
	樓層 Floor	A	B	C
層與層之間的高度 (毫米) Floor-to-Floor Height (mm)	天台 Roof	不適用 Not Applicable		
樓板(不包括灰泥) 的厚度(毫米) Thickness of Floor Slab (excluding plaster) (mm)				