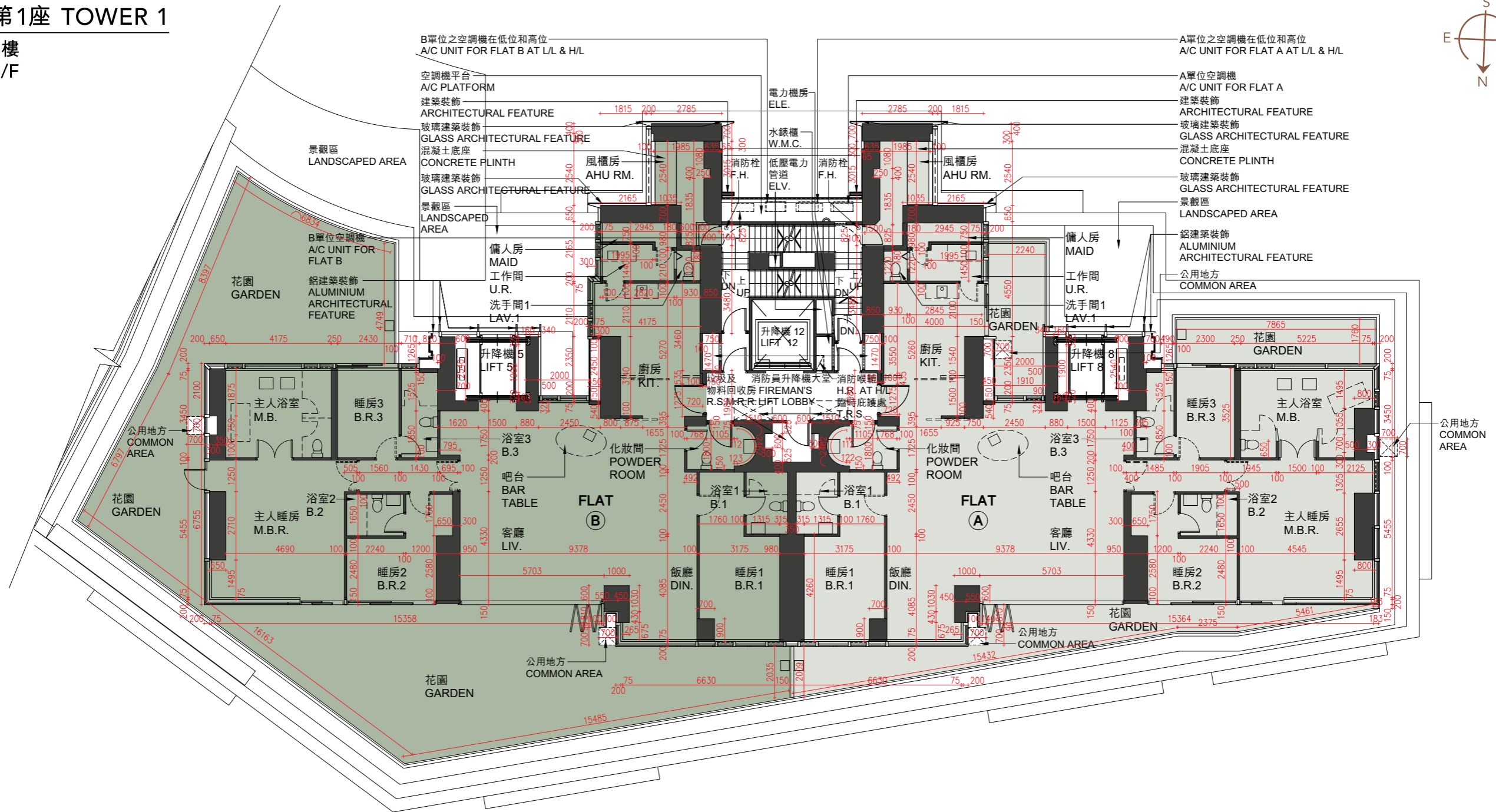
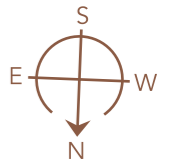


# 10 期數的住宅物業的樓面平面圖

## FLOOR PLANS OF RESIDENTIAL PROPERTIES IN THE PHASE

### 第1座 TOWER 1

6樓  
6/F



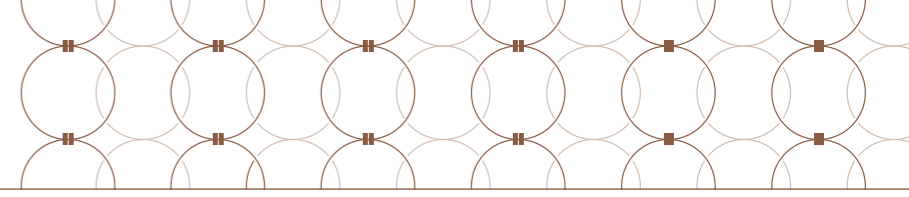
備註：平面圖所列數字為以毫米標示之建築結構尺寸。

Note: The dimensions of the floor plans are all structural dimensions measured in millimeters.

比例尺 Scale 0(m) 5(m)

# 10 期數的住宅物業的樓面平面圖

## FLOOR PLANS OF RESIDENTIAL PROPERTIES IN THE PHASE



每個住宅物業 Each Residential Property	樓層 FLOOR	第1座 TOWER 1	
		單位 FLAT	
		A	B
樓板(不包括灰泥)的厚度(毫米) Thickness of Floor Slab (excluding plaster) (mm)	6樓 6/F	150, 175, 200, 275	150, 175, 200, 275
層與層之間的高度(毫米) Floor-to-Floor Height (mm)		3050, 3100, 3150, 3200, 3250, 3400, 3450, 3470, 3500	3050, 3100, 3150, 3200, 3250, 3400, 3450, 3470, 3500

因住宅物業的較高樓層的結構牆的厚度遞減，較高樓層的內部面積，一般比較低樓層的內部面積稍大。

The internal areas of the residential properties on the upper floors will generally be slightly larger than those on the lower floors because of the reducing thickness of the structural walls on the upper floors.

請參閱本售樓說明書第68 - 70頁為住宅物業的樓面平面圖而設之備註和圖例。

Please refer to pages 68 - 70 of this sales brochure for the remarks and legends pertaining to the floor plans of the residential properties.

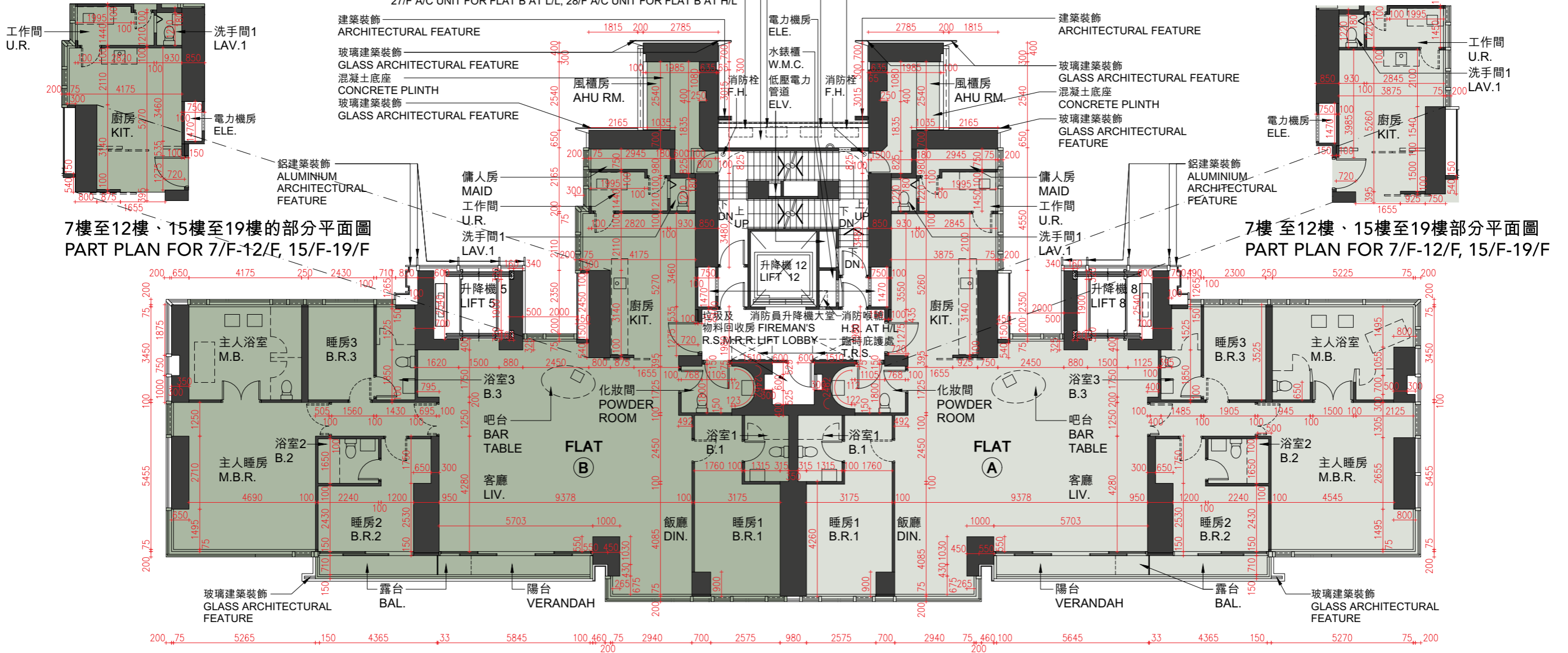
# 10 期數的住宅物業的樓面平面圖 FLOOR PLANS OF RESIDENTIAL PROPERTIES IN THE PHASE

## 第1座 TOWER 1

7樓至12樓、15樓至23樓、25樓至28樓  
7/F - 12/F, 15/F - 23/F, 25/F - 28/F

6樓至26樓, 28樓B單位之空調機在低位和高位  
6/F-26/F, 28/F A/C UNIT FOR FLAT B AT L/L & H/L  
空調機平台  
A/C PLATFORM  
6樓至26樓B單位空調機  
6/F-26/F A/C UNIT FOR FLAT B  
27樓B單位之空調機在低位, 28樓B單位之空調機在高位  
27/F A/C UNIT FOR FLAT B AT L/L, 28/F A/C UNIT FOR FLAT B AT H/L

7樓至28樓A單位之空調機在低位和高位  
7/F - 28/F A/C UNIT FOR FLAT A AT L/L & H/L  
7樓至28樓A單位空調機  
7/F - 28/F A/C UNIT FOR FLAT A



7樓至12樓、15樓至19樓的部分平面圖  
PART PLAN FOR 7/F-12/F, 15/F-19/F

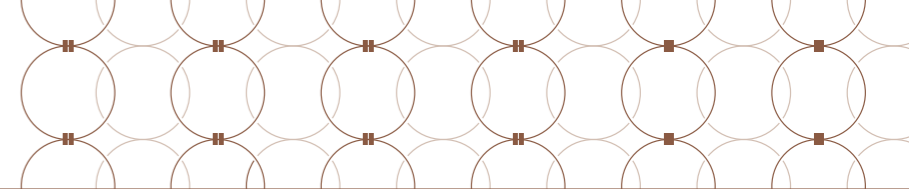
7樓至12樓、15樓至19樓部分平面圖  
PART PLAN FOR 7/F-12/F, 15/F-19/F

備註：平面圖所列數字為以毫米標示之建築結構尺寸。  
Note: The dimensions of the floor plans are all structural dimensions measured in millimeters.

比例尺 Scale 0米(m) 5米(m)

# 10 期數的住宅物業的樓面平面圖

## FLOOR PLANS OF RESIDENTIAL PROPERTIES IN THE PHASE



每個住宅物業 Each Residential Property	樓層 FLOOR	第1座 TOWER 1	
		單位 FLAT	
		A	B
樓板(不包括灰泥)的厚度(毫米) Thickness of Floor Slab (excluding plaster) (mm)	7樓至12樓、15樓至23樓、25樓至27樓 7/F - 12/F, 15/F - 23/F, 25/F - 27/F	150, 175, 200, 275	150, 175, 200, 275
層與層之間的高度(毫米) Floor-to-Floor Height (mm)		2810, 2860, 2910, 2960, 3010, 3160, 3210, 3230, 3260	2810, 2860, 2910, 2960, 3010, 3160, 3210, 3230, 3260
樓板(不包括灰泥)的厚度(毫米) Thickness of Floor Slab (excluding plaster) (mm)	28樓 28/F	150, 200	150, 175, 200
層與層之間的高度(毫米) Floor-to-Floor Height (mm)		3260	3260

因住宅物業的較高樓層的結構牆的厚度遞減，較高樓層的內部面積，一般比較低樓層的內部面積稍大。

The internal areas of the residential properties on the upper floors will generally be slightly larger than those on the lower floors because of the reducing thickness of the structural walls on the upper floors.

請參閱本售樓說明書第68 - 70頁為住宅物業的樓面平面圖而設之備註和圖例。

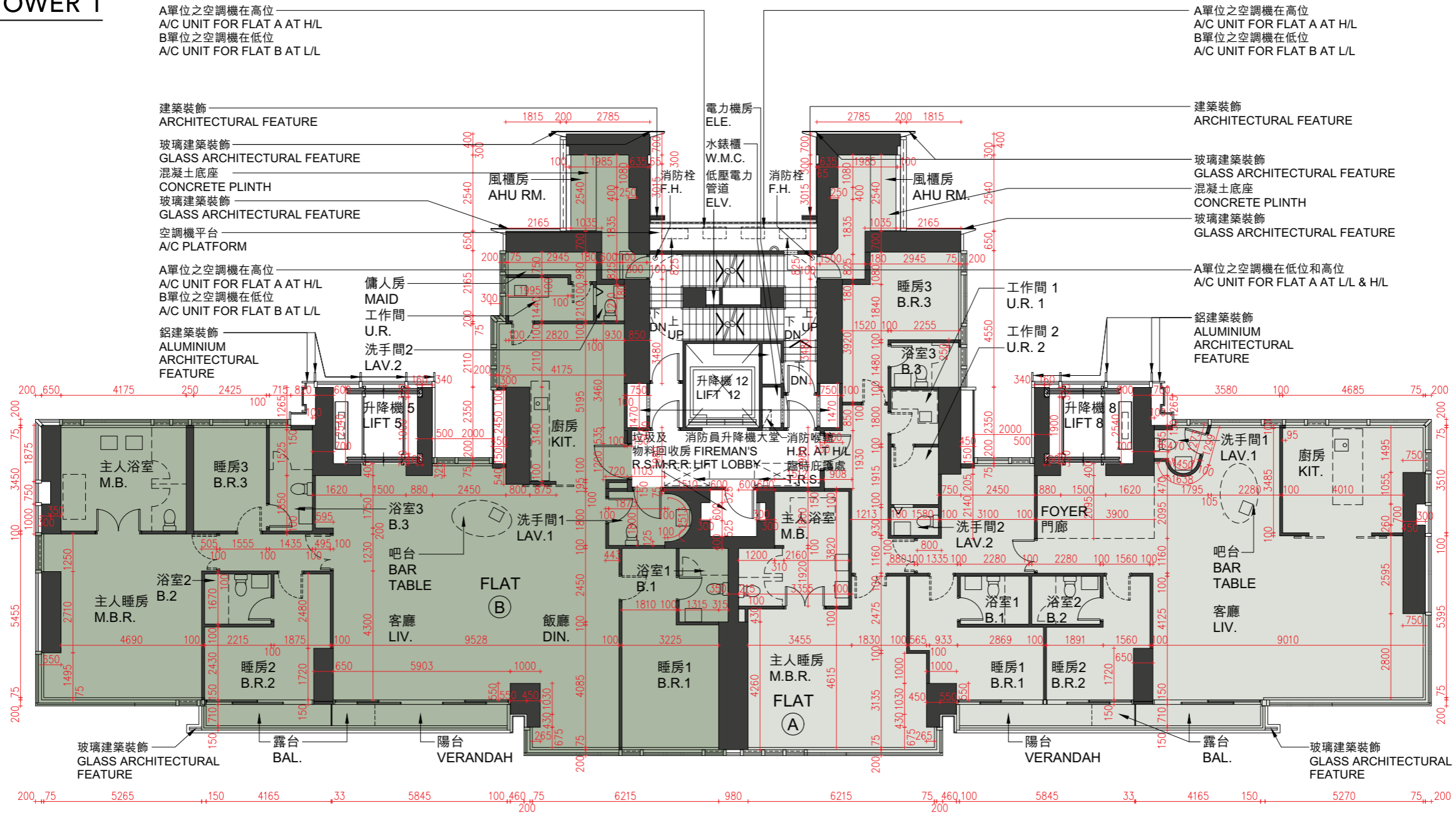
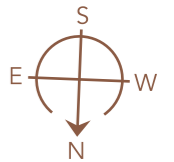
Please refer to pages 68 - 70 of this sales brochure for the remarks and legends pertaining to the floor plans of the residential properties.

# 10 期數的住宅物業的樓面平面圖

## FLOOR PLANS OF RESIDENTIAL PROPERTIES IN THE PHASE

### 第1座 TOWER 1

30樓  
30/F



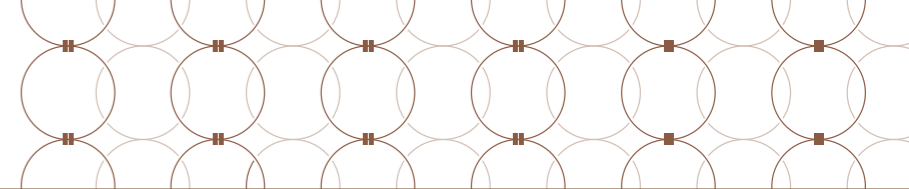
備註：平面圖所列數字為以毫米標示之建築結構尺寸。

Note: The dimensions of the floor plans are all structural dimensions measured in millimeters.

比例尺 Scale 0米(m) 5米(m)

# 10 期數的住宅物業的樓面平面圖

## FLOOR PLANS OF RESIDENTIAL PROPERTIES IN THE PHASE



每個住宅物業 Each Residential Property	樓層 FLOOR	第1座 TOWER 1	
		單位 FLAT	
		A	B
樓板(不包括灰泥)的厚度(毫米) Thickness of Floor Slab (excluding plaster) (mm)	30樓 30/F	150, 200, 225, 250	150, 175, 275
層與層之間的高度(毫米) Floor-to-Floor Height (mm)		2810, 2910, 2960, 3010, 3060, 3160, 3230, 3260	2810, 2860, 2910, 2960, 3010, 3060, 3160, 3185, 3230, 3260

因住宅物業的較高樓層的結構牆的厚度遞減，較高樓層的內部面積，一般比較低樓層的內部面積稍大。

The internal areas of the residential properties on the upper floors will generally be slightly larger than those on the lower floors because of the reducing thickness of the structural walls on the upper floors.

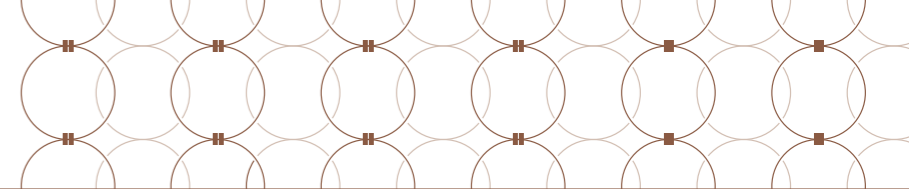
請參閱本售樓說明書第68 - 70頁為住宅物業的樓面平面圖而設之備註和圖例。

Please refer to pages 68 - 70 of this sales brochure for the remarks and legends pertaining to the floor plans of the residential properties.



# 10 期數的住宅物業的樓面平面圖

## FLOOR PLANS OF RESIDENTIAL PROPERTIES IN THE PHASE



每個住宅物業 Each Residential Property	樓層 FLOOR	第1座 TOWER 1	
		單位 FLAT	
		A	B
樓板(不包括灰泥)的厚度(毫米) Thickness of Floor Slab (excluding plaster) (mm)	31樓至33樓 31/F - 33/F	150, 200, 225, 250	150, 175, 275
層與層之間的高度(毫米) Floor-to-Floor Height (mm)		2810, 2910, 2960, 3010, 3060, 3160, 3230, 3260	2810, 2860, 2910, 2960, 3010, 3060, 3160, 3185, 3230, 3260
樓板(不包括灰泥)的厚度(毫米) Thickness of Floor Slab (excluding plaster) (mm)	35樓 35/F	150, 200, 225, 250	150, 175, 275
層與層之間的高度(毫米) Floor-to-Floor Height (mm)		3050, 3150, 3200, 3300, 3350, 3395, 3400, 3445, 3470, 3500	3050, 3100, 3150, 3200, 3250, 3300, 3350, 3400, 3470, 3500

因住宅物業的較高樓層的結構牆的厚度遞減，較高樓層的內部面積，一般比較低樓層的內部面積稍大。

The internal areas of the residential properties on the upper floors will generally be slightly larger than those on the lower floors because of the reducing thickness of the structural walls on the upper floors.

請參閱本售樓說明書第68 - 70頁為住宅物業的樓面平面圖而設之備註和圖例。

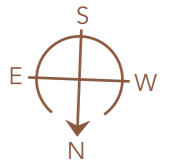
Please refer to pages 68 - 70 of this sales brochure for the remarks and legends pertaining to the floor plans of the residential properties.

# 10 期數的住宅物業的樓面平面圖

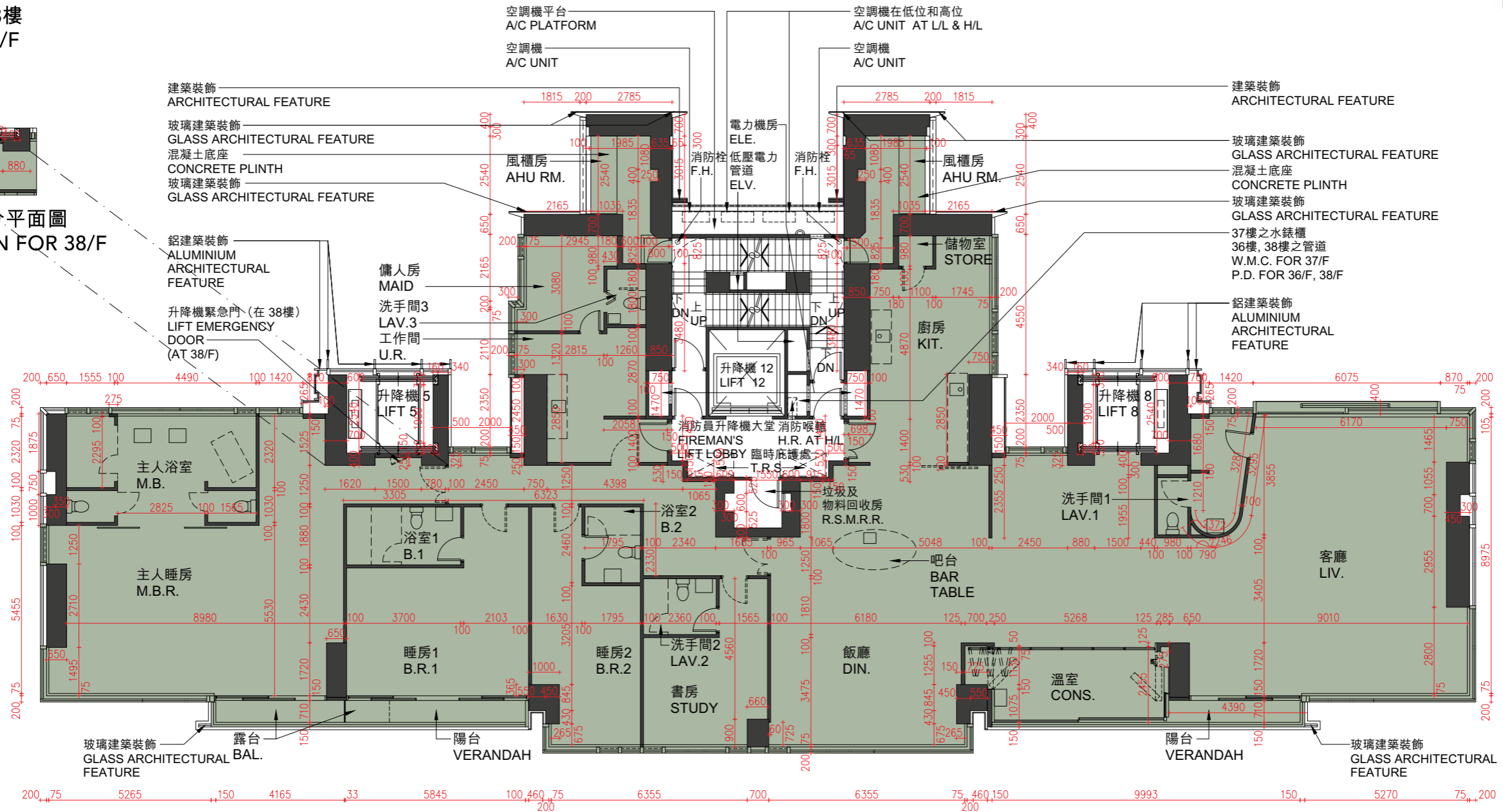
## FLOOR PLANS OF RESIDENTIAL PROPERTIES IN THE PHASE

### 第1座 TOWER 1

36樓至38樓  
36/F - 38/F



38樓的部分平面圖  
PART PLAN FOR 38/F

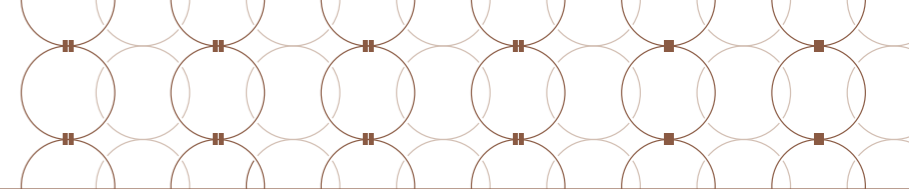


備註：平面圖所列數字為以毫米標示之建築結構尺寸。  
Note: The dimensions of the floor plans are all structural dimensions measured in millimeters.

比例尺 Scale 0米(m) 5米(m)

# 10 期數的住宅物業的樓面平面圖

## FLOOR PLANS OF RESIDENTIAL PROPERTIES IN THE PHASE



每個住宅物業 Each Residential Property	樓層 FLOOR	第1座 TOWER 1	
		單位 FLAT	
		A	
樓板(不包括灰泥)的厚度(毫米) Thickness of Floor Slab (excluding plaster) (mm)	36樓 36/F	150, 175, 200, 225, 250, 275	
層與層之間的高度(毫米) Floor-to-Floor Height (mm)		3050, 3100, 3150, 3200, 3250, 3300, 3350, 3395, 3400, 3470, 3500	
樓板(不包括灰泥)的厚度(毫米) Thickness of Floor Slab (excluding plaster) (mm)	37樓 37/F	150, 175, 200, 225, 250, 275	
層與層之間的高度(毫米) Floor-to-Floor Height (mm)		3050, 3100, 3150, 3200, 3250, 3300, 3350, 3400, 3470, 3500	
樓板(不包括灰泥)的厚度(毫米) Thickness of Floor Slab (excluding plaster) (mm)	38樓 38/F	150, 175, 200, 225, 250, 275	
層與層之間的高度(毫米) Floor-to-Floor Height (mm)		3050, 3100, 3150, 3200, 3250, 3300, 3350, 3400, 3470, 3500, 3605	

因住宅物業的較高樓層的結構牆的厚度遞減，較高樓層的內部面積，一般比較低樓層的內部面積稍大。

The internal areas of the residential properties on the upper floors will generally be slightly larger than those on the lower floors because of the reducing thickness of the structural walls on the upper floors.

請參閱本售樓說明書第68 - 70頁為住宅物業的樓面平面圖而設之備註和圖例。

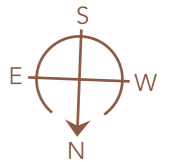
Please refer to pages 68 - 70 of this sales brochure for the remarks and legends pertaining to the floor plans of the residential properties.

# 10 期數的住宅物業的樓面平面圖

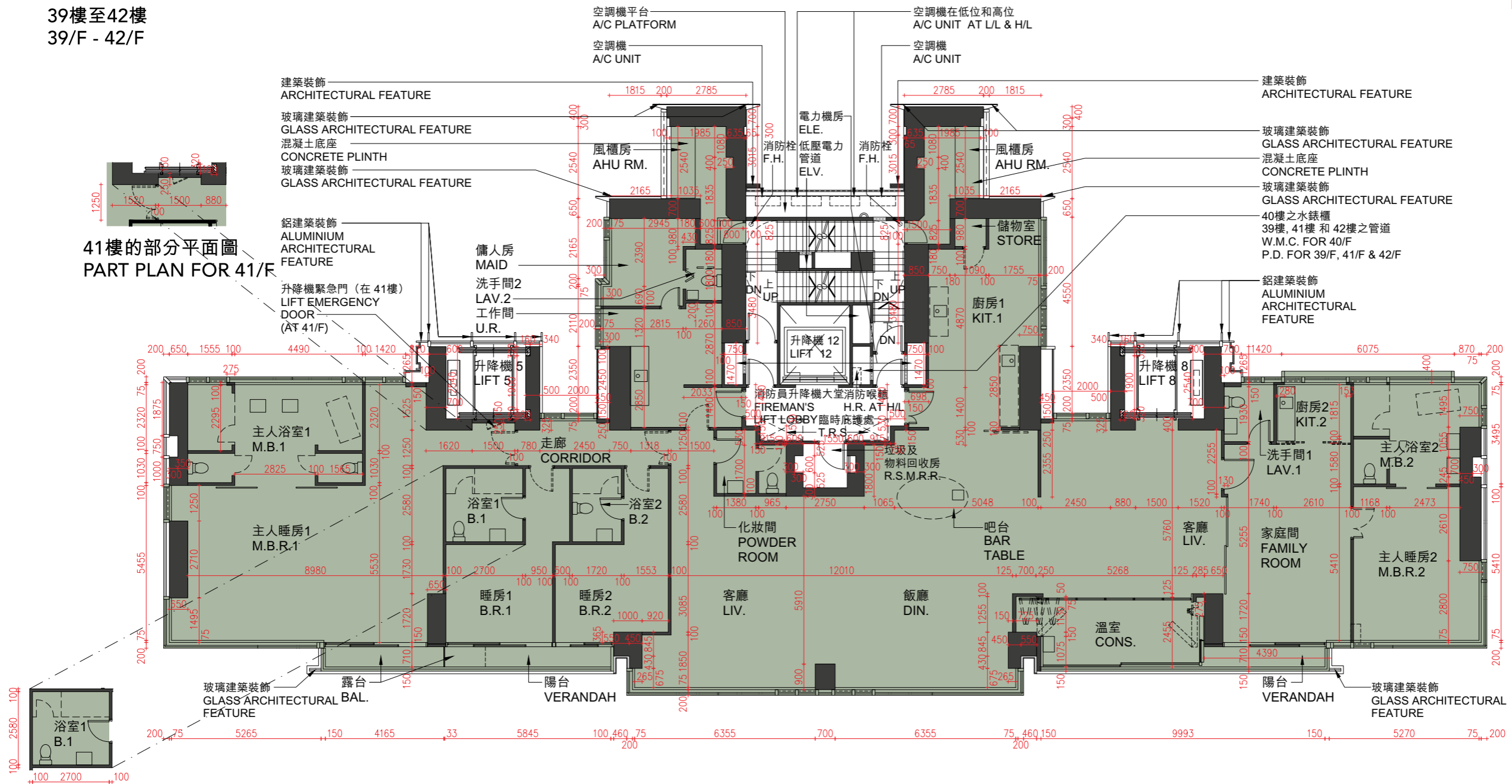
## FLOOR PLANS OF RESIDENTIAL PROPERTIES IN THE PHASE

### 第1座 TOWER 1

39樓至42樓  
39/F - 42/F



41樓的部分平面圖  
PART PLAN FOR 41/F



40樓至42樓的部分平面圖  
PART PLAN FOR 40/F - 42/F

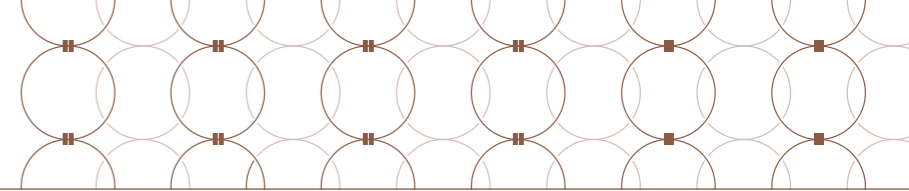
備註：平面圖所列數字為以毫米標示之建築結構尺寸。

Note: The dimensions of the floor plans are all structural dimensions measured in millimeters.

比例尺 Scale 0米(m) 5米(m)

# 10 期數的住宅物業的樓面平面圖

## FLOOR PLANS OF RESIDENTIAL PROPERTIES IN THE PHASE



每個住宅物業 Each Residential Property	樓層 FLOOR	第1座 TOWER 1
樓板(不包括灰泥)的厚度(毫米) Thickness of Floor Slab (excluding plaster) (mm)	39樓 39/F	150, 175, 200, 250, 275
層與層之間的高度(毫米) Floor-to-Floor Height (mm)		3050, 3100, 3150, 3200, 3250, 3300, 3350, 3400, 3470, 3500, 3605
樓板(不包括灰泥)的厚度(毫米) Thickness of Floor Slab (excluding plaster) (mm)	40樓至41樓 40/F - 41/F	150, 175, 200, 250, 275
層與層之間的高度(毫米) Floor-to-Floor Height (mm)		3050, 3100, 3150, 3200, 3250, 3300, 3350, 3400, 3470, 3500
樓板(不包括灰泥)的厚度(毫米) Thickness of Floor Slab (excluding plaster) (mm)	42樓 42/F	150, 175, 200, 225, 250, 275
層與層之間的高度(毫米) Floor-to-Floor Height (mm)		3050, 3100, 3150, 3200, 3250, 3300, 3350, 3400, 3450, 3470, 3500

因住宅物業的較高樓層的結構牆的厚度遞減，較高樓層的內部面積，一般比較低樓層的內部面積稍大。

The internal areas of the residential properties on the upper floors will generally be slightly larger than those on the lower floors because of the reducing thickness of the structural walls on the upper floors.

請參閱本售樓說明書第68 - 70頁為住宅物業的樓面平面圖而設之備註和圖例。

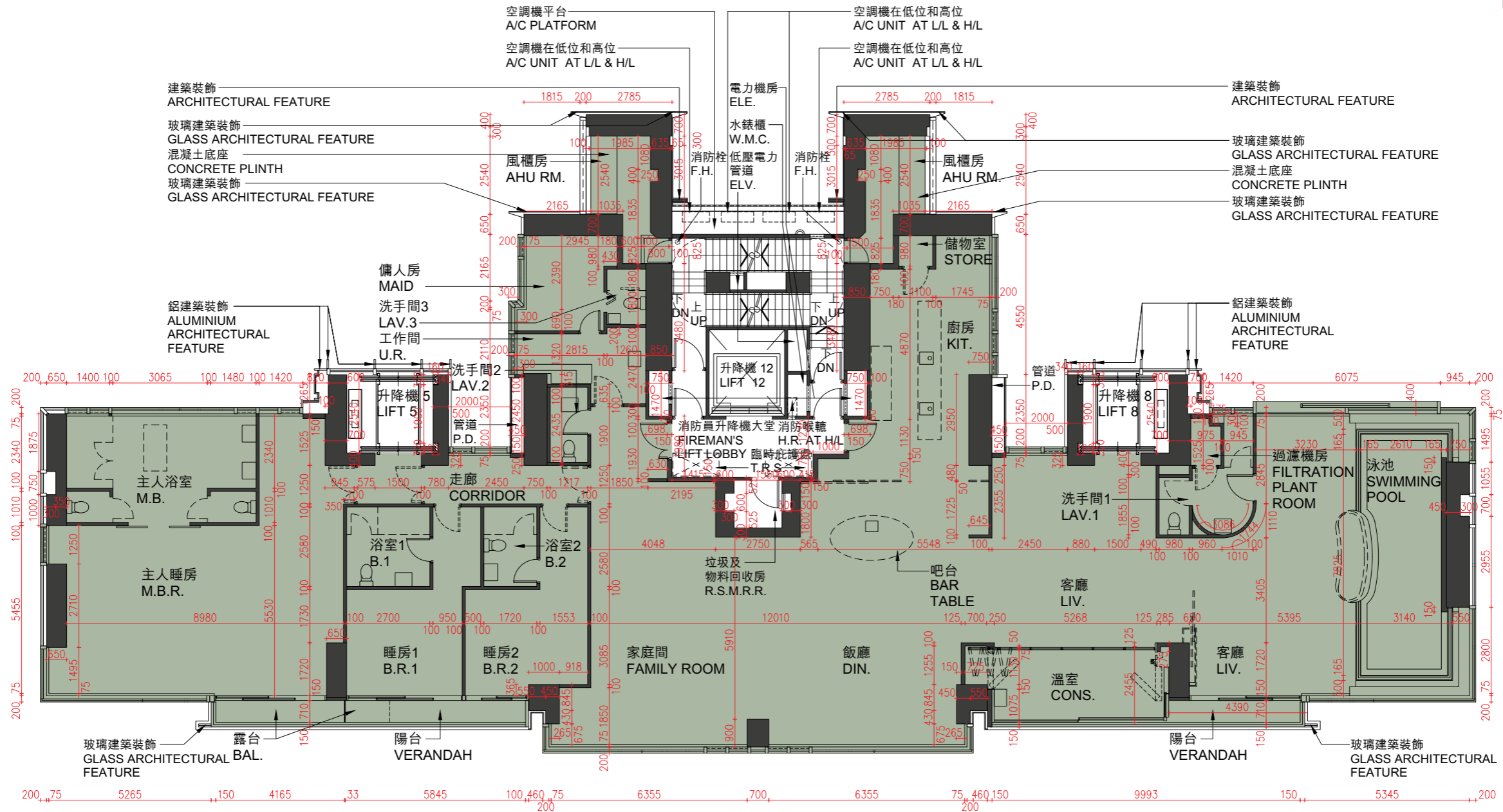
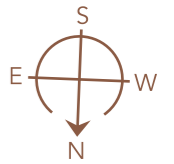
Please refer to pages 68 - 70 of this sales brochure for the remarks and legends pertaining to the floor plans of the residential properties.

# 10 期數的住宅物業的樓面平面圖

## FLOOR PLANS OF RESIDENTIAL PROPERTIES IN THE PHASE

### 第1座 TOWER 1

43樓  
43/F



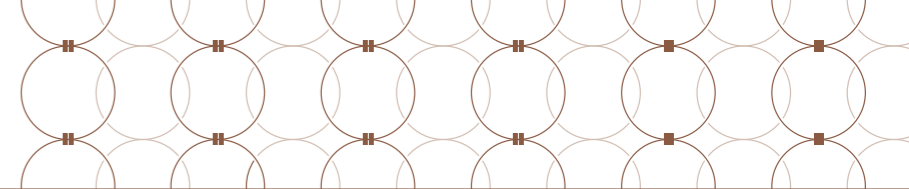
備註：平面圖所列數字為以毫米標示之建築結構尺寸。

Note: The dimensions of the floor plans are all structural dimensions measured in millimeters.

比例尺 Scale 0米(m) 5米(m)

# 10 期數的住宅物業的樓面平面圖

## FLOOR PLANS OF RESIDENTIAL PROPERTIES IN THE PHASE



每個住宅物業 Each Residential Property	樓層 FLOOR	第1座 TOWER 1
樓板(不包括灰泥)的厚度(毫米) Thickness of Floor Slab (excluding plaster) (mm)	43樓 43/F	150, 175, 200, 250, 300
層與層之間的高度(毫米) Floor-to-Floor Height (mm)		3050, 3100, 3150, 3200, 3250, 3300, 3350, 3400, 3470, 3500

因住宅物業的較高樓層的結構牆的厚度遞減，較高樓層的內部面積，一般比較低樓層的內部面積稍大。

The internal areas of the residential properties on the upper floors will generally be slightly larger than those on the lower floors because of the reducing thickness of the structural walls on the upper floors.

請參閱本售樓說明書第68 - 70頁為住宅物業的樓面平面圖而設之備註和圖例。

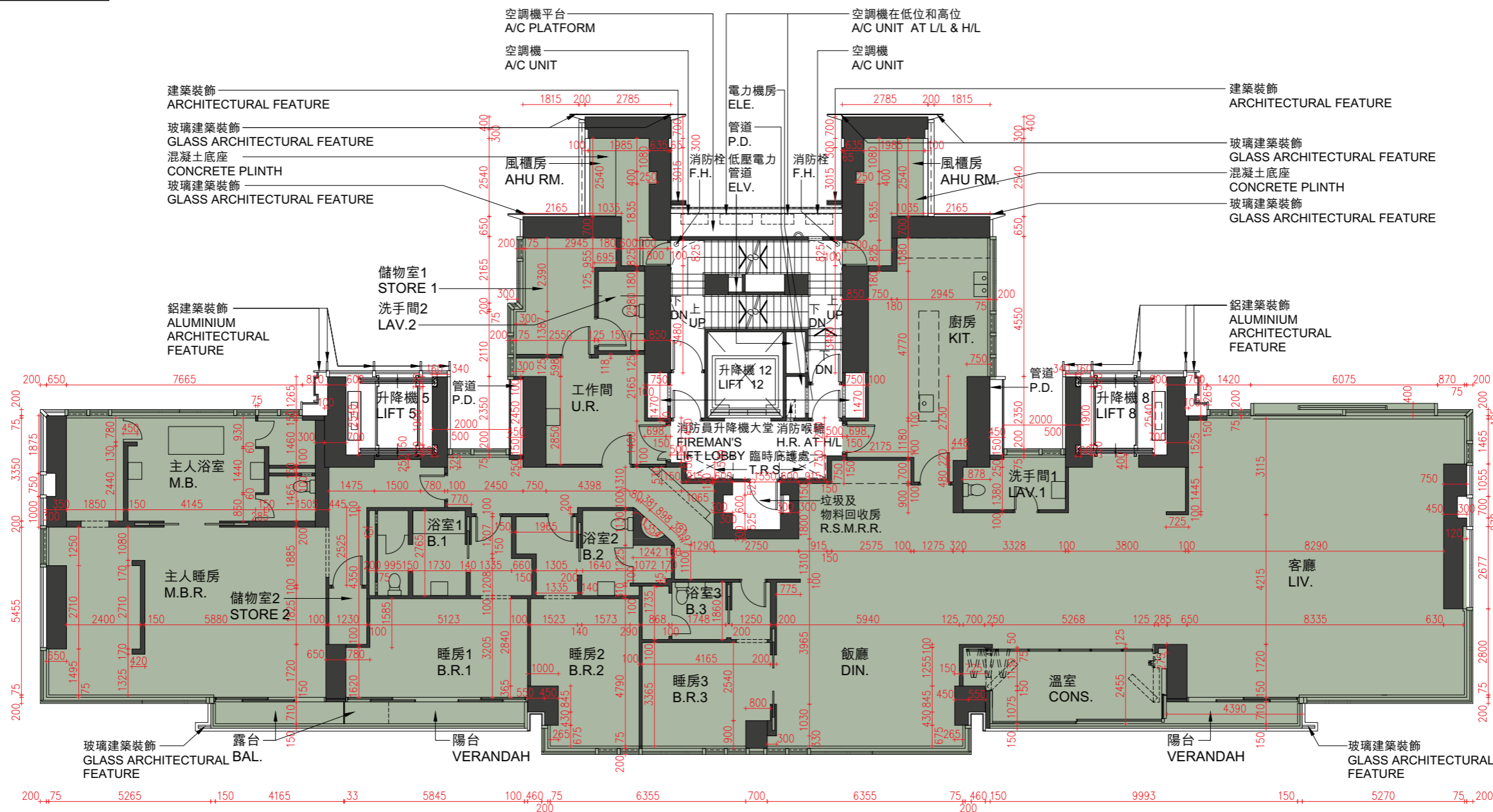
Please refer to pages 68 - 70 of this sales brochure for the remarks and legends pertaining to the floor plans of the residential properties.

# 10 期數的住宅物業的樓面平面圖

## FLOOR PLANS OF RESIDENTIAL PROPERTIES IN THE PHASE

### 第1座 TOWER 1

45樓  
45/F



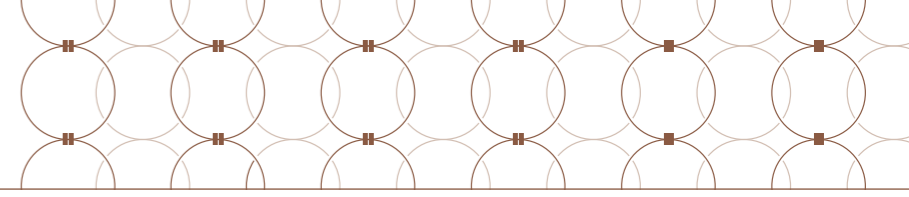
備註：平面圖所列數字為以毫米標示之建築結構尺寸。

Note: The dimensions of the floor plans are all structural dimensions measured in millimeters.

比例尺 Scale 0米(m) 5米(m)

# 10 期數的住宅物業的樓面平面圖

## FLOOR PLANS OF RESIDENTIAL PROPERTIES IN THE PHASE



每個住宅物業 Each Residential Property	樓層 FLOOR	第1座 TOWER 1
樓板(不包括灰泥)的厚度(毫米) Thickness of Floor Slab (excluding plaster) (mm)	45樓 45/F	150, 175, 200, 225, 275
層與層之間的高度(毫米) Floor-to-Floor Height (mm)		3050, 3100, 3150, 3200, 3250, 3300, 3350, 3400, 3470, 3500

因住宅物業的較高樓層的結構牆的厚度遞減，較高樓層的內部面積，一般比較低樓層的內部面積稍大。

The internal areas of the residential properties on the upper floors will generally be slightly larger than those on the lower floors because of the reducing thickness of the structural walls on the upper floors.

請參閱本售樓說明書第68 - 70頁為住宅物業的樓面平面圖而設之備註和圖例。

Please refer to pages 68 - 70 of this sales brochure for the remarks and legends pertaining to the floor plans of the residential properties.

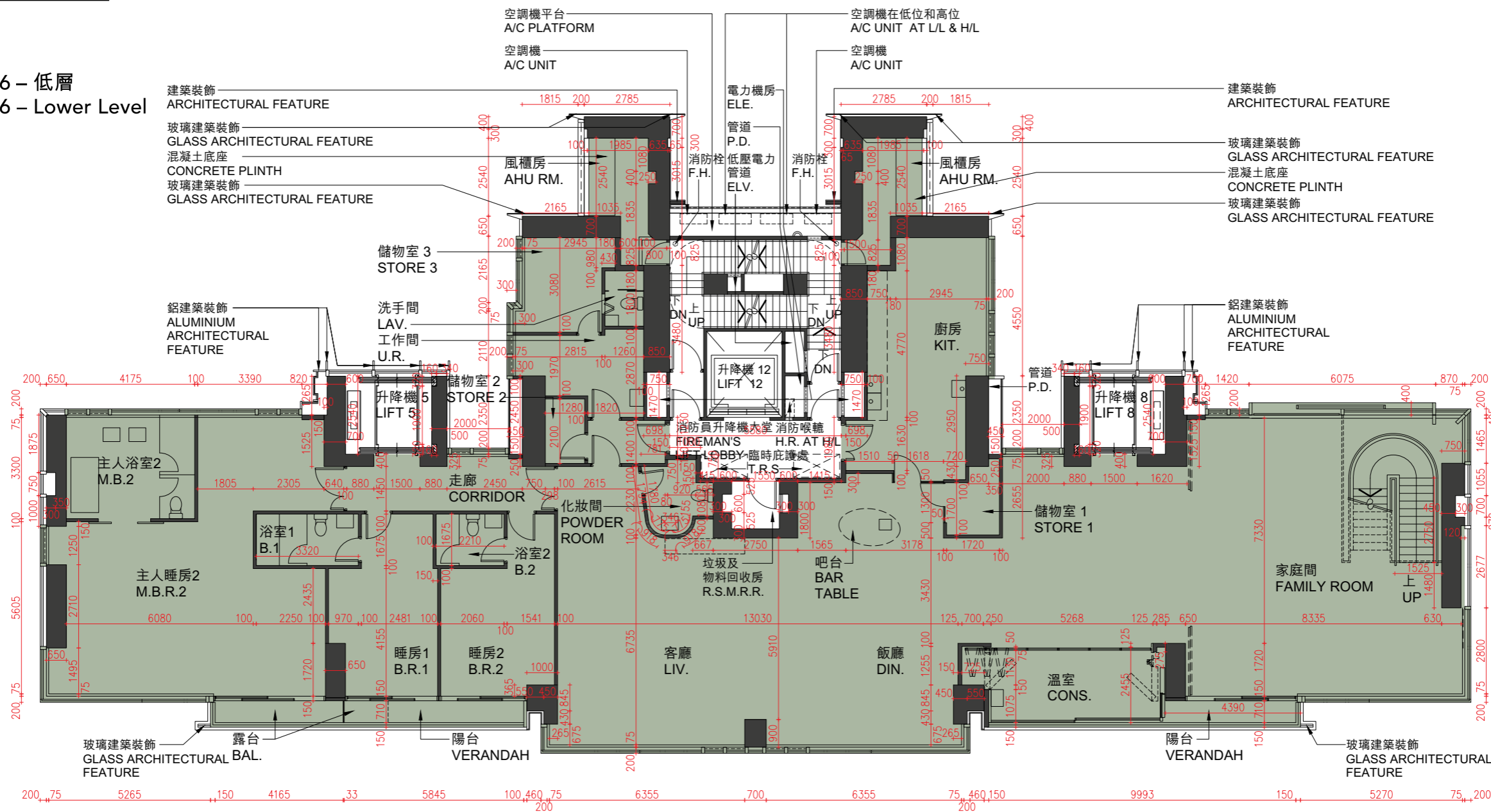
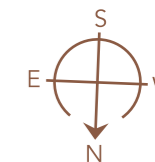
# 10 期數的住宅物業的樓面平面圖

## FLOOR PLANS OF RESIDENTIAL PROPERTIES IN THE PHASE

### 第1座 TOWER 1

46樓  
46/F

Duplex 46 – 低層  
Duplex 46 – Lower Level



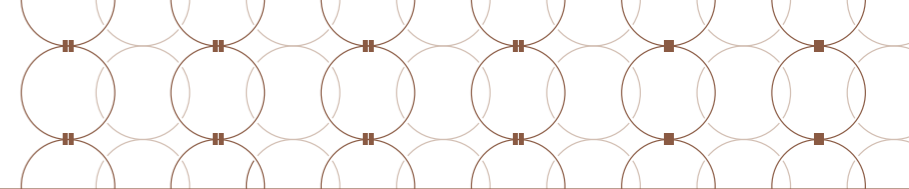
備註：平面圖所列數字為以毫米標示之建築結構尺寸。

Note: The dimensions of the floor plans are all structural dimensions measured in millimeters.

比例尺 Scale 0米(m) 5米(m)

# 10 期數的住宅物業的樓面平面圖

## FLOOR PLANS OF RESIDENTIAL PROPERTIES IN THE PHASE



每個住宅物業 Each Residential Property	樓層 FLOOR	第1座 TOWER 1
		單位 FLAT
		Duplex 46
樓板(不包括灰泥)的厚度(毫米) Thickness of Floor Slab (excluding plaster) (mm)	46樓 46/F	150, 175, 200, 275
層與層之間的高度(毫米) Floor-to-Floor Height (mm)		3050, 3100, 3150, 3200, 3250, 3300, 3400, 3470, 3500, 3555, 3575, 6970

因住宅物業的較高樓層的結構牆的厚度遞減，較高樓層的內部面積，一般比較低樓層的內部面積稍大。

The internal areas of the residential properties on the upper floors will generally be slightly larger than those on the lower floors because of the reducing thickness of the structural walls on the upper floors.

請參閱本售樓說明書第68 - 70頁為住宅物業的樓面平面圖而設之備註和圖例。

Please refer to pages 68 - 70 of this sales brochure for the remarks and legends pertaining to the floor plans of the residential properties.

# 10 期數的住宅物業的樓面平面圖

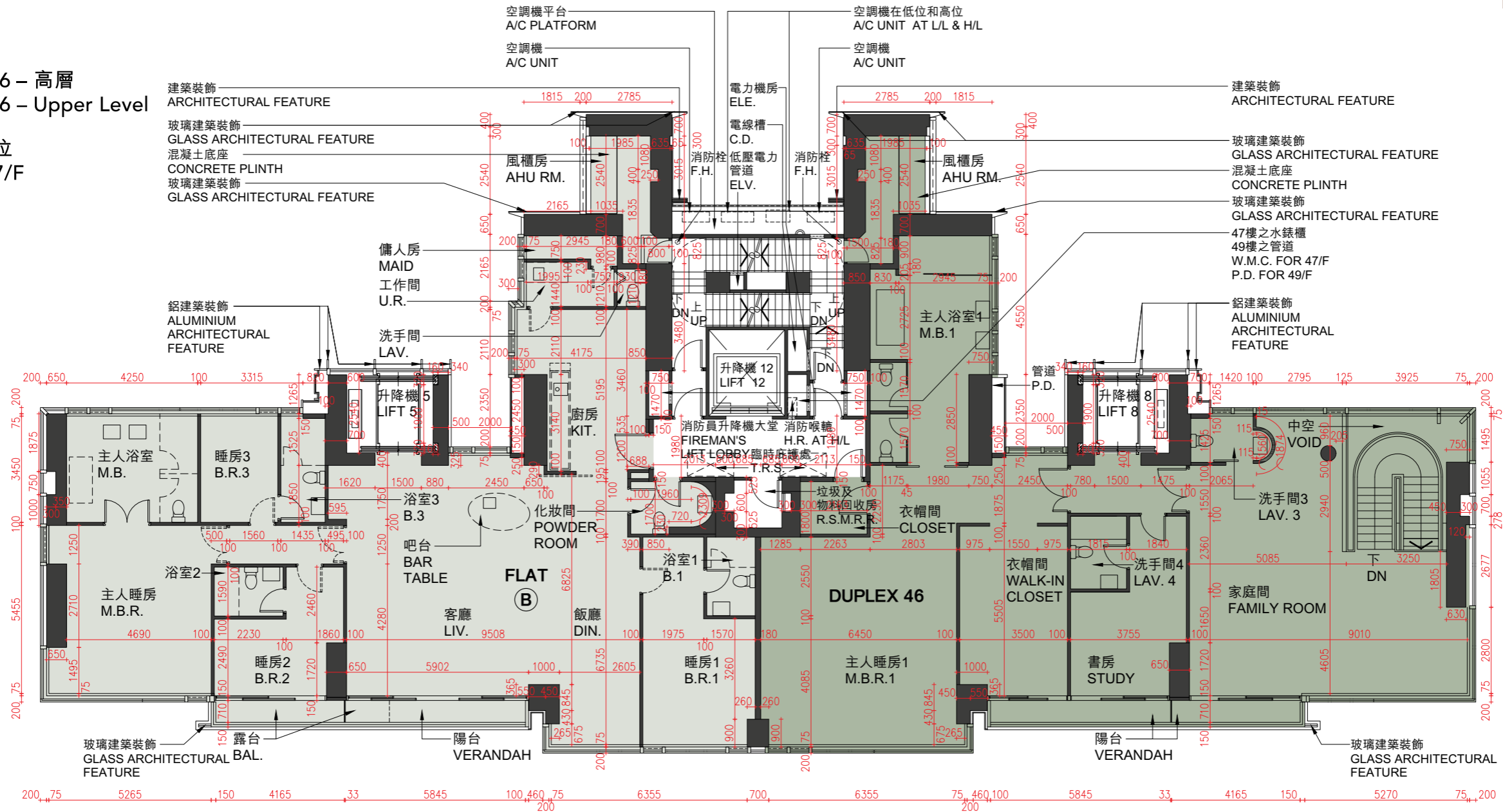
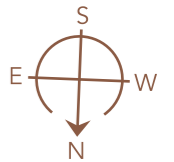
## FLOOR PLANS OF RESIDENTIAL PROPERTIES IN THE PHASE

### 第1座 TOWER 1

47樓  
47/F

Duplex 46 – 高層  
Duplex 46 – Upper Level

47樓B單位  
Flat B, 47/F



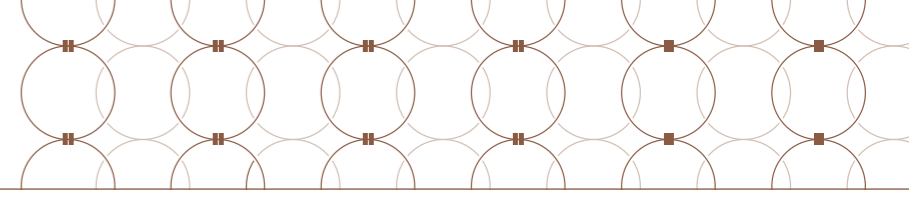
備註：平面圖所列數字為以毫米標示之建築結構尺寸。

Note: The dimensions of the floor plans are all structural dimensions measured in millimeters.

比例尺 Scale 0米(m) 5米(m)

# 10 期數的住宅物業的樓面平面圖

## FLOOR PLANS OF RESIDENTIAL PROPERTIES IN THE PHASE



每個住宅物業 Each Residential Property	樓層 FLOOR	第1座 TOWER 1	
		單位 FLAT	
		Duplex 46	B
樓板(不包括灰泥)的厚度(毫米) Thickness of Floor Slab (excluding plaster) (mm)	47樓 47/F	150, 175, 200, 275	150, 175, 200, 225
層與層之間的高度(毫米) Floor-to-Floor Height (mm)		3050, 3150, 3200, 3300, 3350, 3470, 3500	3050, 3100, 3150, 3200, 3250, 3400, 3470, 3500

因住宅物業的較高樓層的結構牆的厚度遞減，較高樓層的內部面積，一般比較低樓層的內部面積稍大。

The internal areas of the residential properties on the upper floors will generally be slightly larger than those on the lower floors because of the reducing thickness of the structural walls on the upper floors.

請參閱本售樓說明書第68 - 70頁為住宅物業的樓面平面圖而設之備註和圖例。

Please refer to pages 68 - 70 of this sales brochure for the remarks and legends pertaining to the floor plans of the residential properties.

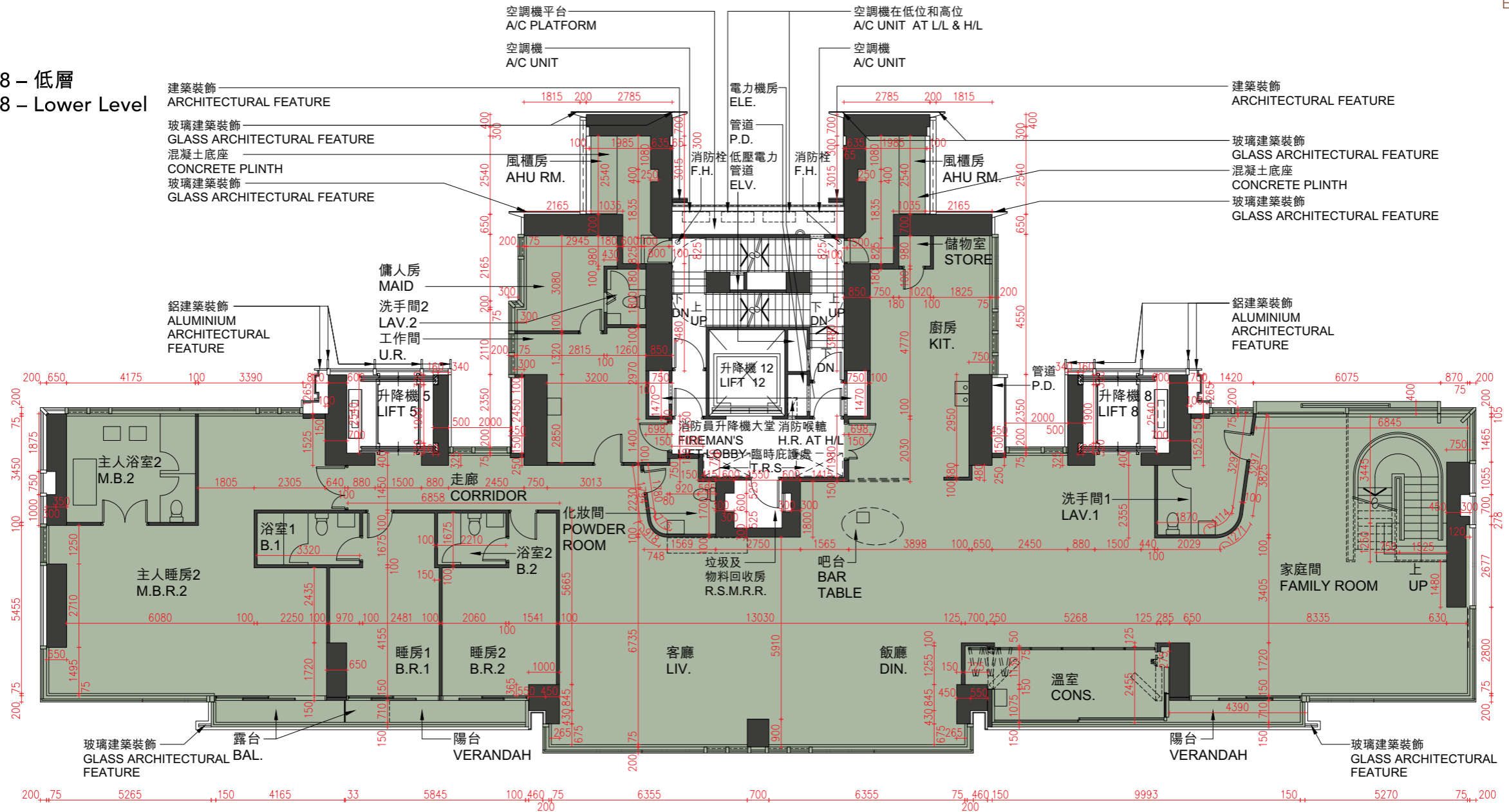
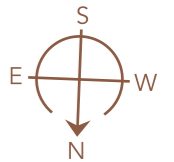
# 10 期數的住宅物業的樓面平面圖

## FLOOR PLANS OF RESIDENTIAL PROPERTIES IN THE PHASE

### 第1座 TOWER 1

48樓  
48/F

Duplex 48 – 低層  
Duplex 48 – Lower Level

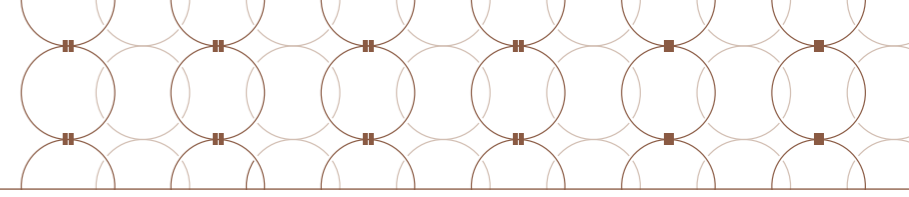


備註：平面圖所列數字為以毫米標示之建築結構尺寸。  
Note: The dimensions of the floor plans are all structural dimensions measured in millimeters.

比例尺 Scale 0米(m) 5米(m)

# 10 期數的住宅物業的樓面平面圖

## FLOOR PLANS OF RESIDENTIAL PROPERTIES IN THE PHASE



每個住宅物業 Each Residential Property	樓層 FLOOR	第1座 TOWER 1
		單位 FLAT
		Duplex 48
樓板(不包括灰泥)的厚度(毫米) Thickness of Floor Slab (excluding plaster) (mm)	48樓 48/F	150, 175, 200, 275
層與層之間的高度(毫米) Floor-to-Floor Height (mm)		3050, 3100, 3150, 3200, 3250, 3300, 3400, 3470, 3500, 3555, 3575, 6650, 6700, 6950, 6970

因住宅物業的較高樓層的結構牆的厚度遞減，較高樓層的內部面積，一般比較低樓層的內部面積稍大。

The internal areas of the residential properties on the upper floors will generally be slightly larger than those on the lower floors because of the reducing thickness of the structural walls on the upper floors.

請參閱本售樓說明書第68 - 70頁為住宅物業的樓面平面圖而設之備註和圖例。

Please refer to pages 68 - 70 of this sales brochure for the remarks and legends pertaining to the floor plans of the residential properties.

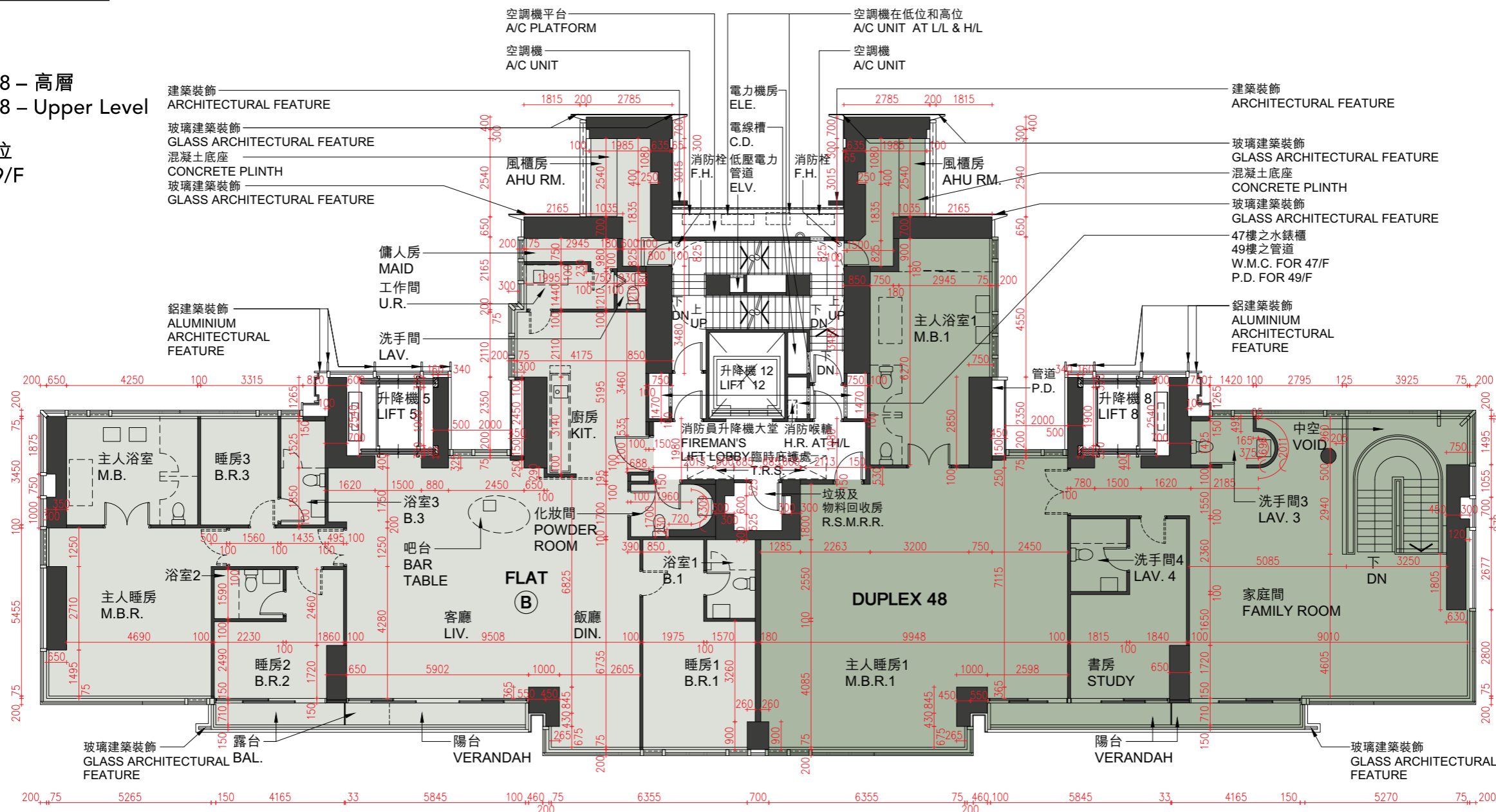
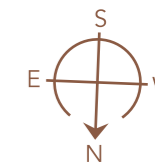
# 10 期數的住宅物業的樓面平面圖 FLOOR PLANS OF RESIDENTIAL PROPERTIES IN THE PHASE

## 第1座 TOWER 1

49樓  
49/F

Duplex 48 – 高層  
Duplex 48 – Upper Level

49樓B單位  
Flat B, 49/F



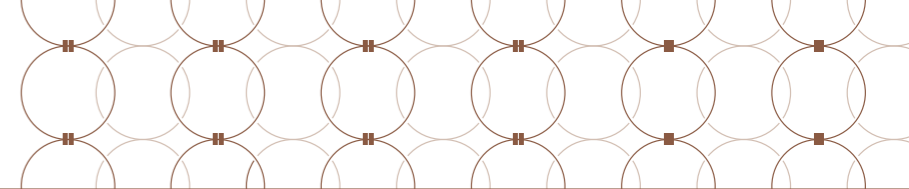
備註：平面圖所列數字為以毫米標示之建築結構尺寸。

Note: The dimensions of the floor plans are all structural dimensions measured in millimeters.

比例尺 Scale 0米(m) 5米(m)

# 10 期數的住宅物業的樓面平面圖

## FLOOR PLANS OF RESIDENTIAL PROPERTIES IN THE PHASE



每個住宅物業 Each Residential Property	樓層 FLOOR	第1座 TOWER 1	
		單位 FLAT	
		Duplex 48	B
樓板(不包括灰泥)的厚度(毫米) Thickness of Floor Slab (excluding plaster) (mm)	49樓 49/F	150, 275, 300	150, 250, 275
層與層之間的高度(毫米) Floor-to-Floor Height (mm)		3050, 3100, 3150, 3200, 3250, 3280, 3350, 3395, 3420, 3450, 3470, 3480, 3500	3050, 3100, 3125, 3150, 3200, 3250, 3300, 3400, 3470, 3500

因住宅物業的較高樓層的結構牆的厚度遞減，較高樓層的內部面積，一般比較低樓層的內部面積稍大。

The internal areas of the residential properties on the upper floors will generally be slightly larger than those on the lower floors because of the reducing thickness of the structural walls on the upper floors.

請參閱本售樓說明書第68 - 70頁為住宅物業的樓面平面圖而設之備註和圖例。

Please refer to pages 68 - 70 of this sales brochure for the remarks and legends pertaining to the floor plans of the residential properties.

# 10 期數的住宅物業的樓面平面圖 FLOOR PLANS OF RESIDENTIAL PROPERTIES IN THE PHASE

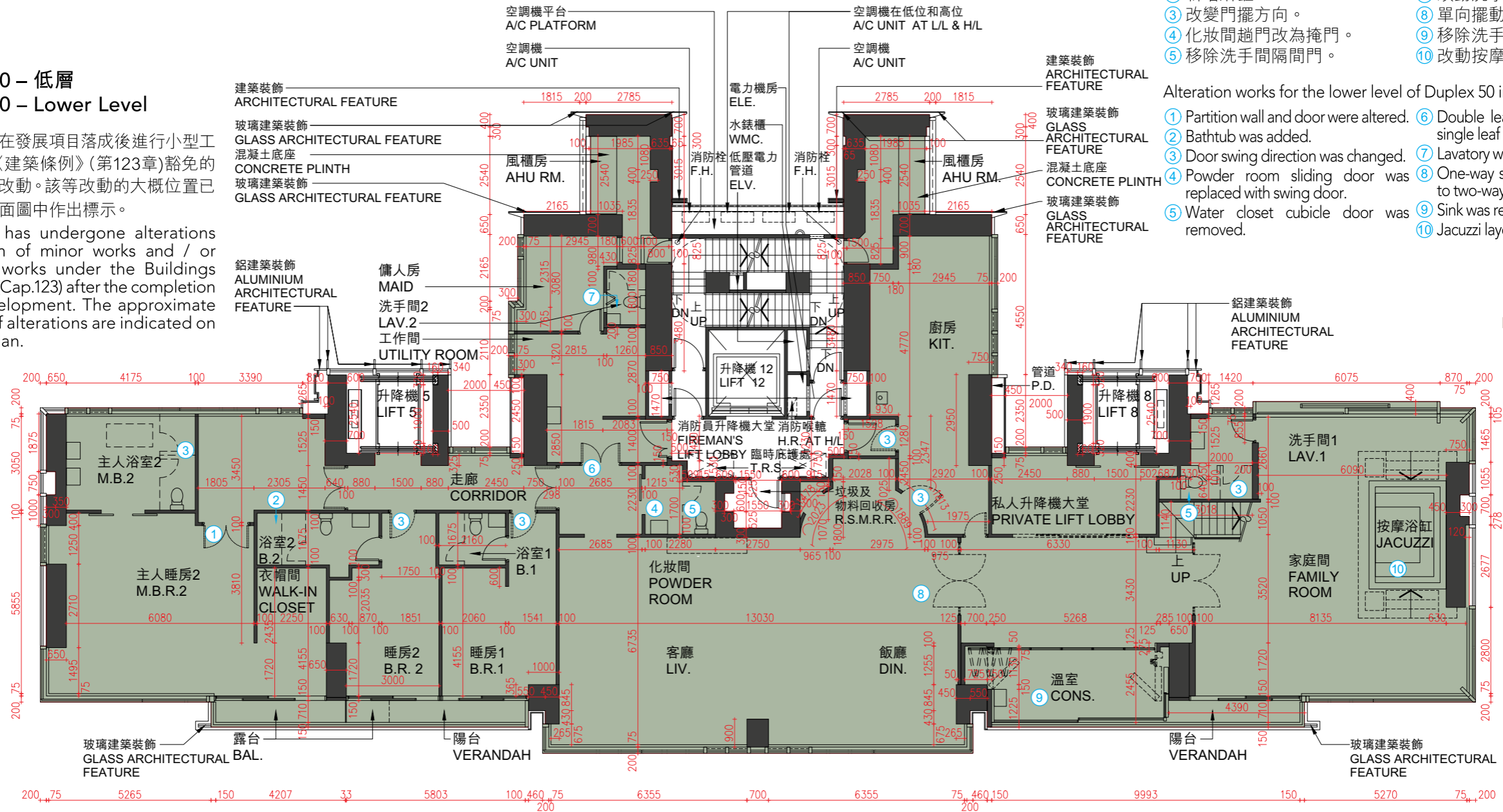
## 第1座 TOWER 1

50樓  
50/F

### Duplex 50 – 低層 Duplex 50 – Lower Level

Duplex 50 在發展項目落成後進行小型工程及/或獲《建築條例》(第123章)豁免的工程而有所改動。該等改動的大概位置已在本樓面平面圖中作出標示。

Duplex 50 has undergone alterations in the form of minor works and / or exempted works under the Buildings Ordinance (Cap.123) after the completion of the Development. The approximate locations of alterations are indicated on this floor plan.



Duplex 50的複式低層改動工程包括：

- |              |                 |
|--------------|-----------------|
| ① 改動間隔牆及門位置。 | ⑥ 雙掩門改為單掩門。     |
| ② 新增浴缸。      | ⑦ 改動洗手間座廁位置。    |
| ③ 改變門擺方向。    | ⑧ 單向擺動門改為雙向擺動門。 |
| ④ 化妝間趟門改為掩門。 | ⑨ 移除洗手盆。        |
| ⑤ 移除洗手間隔間門。  | ⑩ 改動按摩浴缸的佈局。    |

Alteration works for the lower level of Duplex 50 include:

- |  |   |
|--|---|
| ① Partition wall and door were altered.                  | ⑥ Double leaf door was changed to single leaf door.     |
| ② Bathtub was added.                                     | ⑦ Lavatory water closet was relocated.                  |
| ③ Door swing direction was changed.                      | ⑧ One-way swing door was changed to two-way swing door. |
| ④ Powder room sliding door was replaced with swing door. | ⑨ Sink was removed.                                     |
| ⑤ Water closet cubicle door was removed.                 | ⑩ Jacuzzi layout was altered.                           |

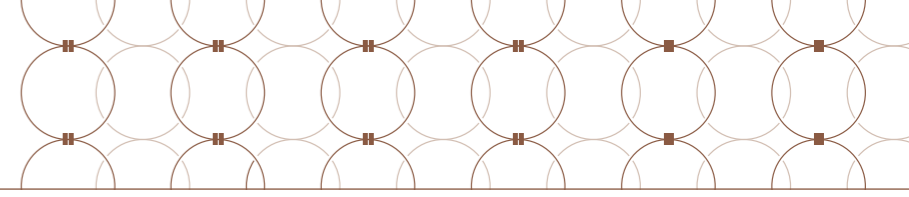
備註：平面圖所列數字為以毫米標示之建築結構尺寸。

Note: The dimensions of the floor plans are all structural dimensions measured in millimeters.

比例尺 Scale 0米(m) 5米(m)

# 10 期數的住宅物業的樓面平面圖

## FLOOR PLANS OF RESIDENTIAL PROPERTIES IN THE PHASE



每個住宅物業 Each Residential Property	樓層 FLOOR	第1座 TOWER 1
		單位 FLAT
		Duplex 50
樓板(不包括灰泥)的厚度(毫米) Thickness of Floor Slab (excluding plaster) (mm)	50樓 50/F	150, 175, 200, 250, 275
層與層之間的高度(毫米) Floor-to-Floor Height (mm)		3050, 3100, 3150, 3200, 3250, 3300, 3355, 3400, 3470, 3500, 3575, 7000

因住宅物業的較高樓層的結構牆的厚度遞減，較高樓層的內部面積，一般比較低樓層的內部面積稍大。

The internal areas of the residential properties on the upper floors will generally be slightly larger than those on the lower floors because of the reducing thickness of the structural walls on the upper floors.

請參閱本售樓說明書第68 - 70頁為住宅物業的樓面平面圖而設之備註和圖例。

Please refer to pages 68 - 70 of this sales brochure for the remarks and legends pertaining to the floor plans of the residential properties.

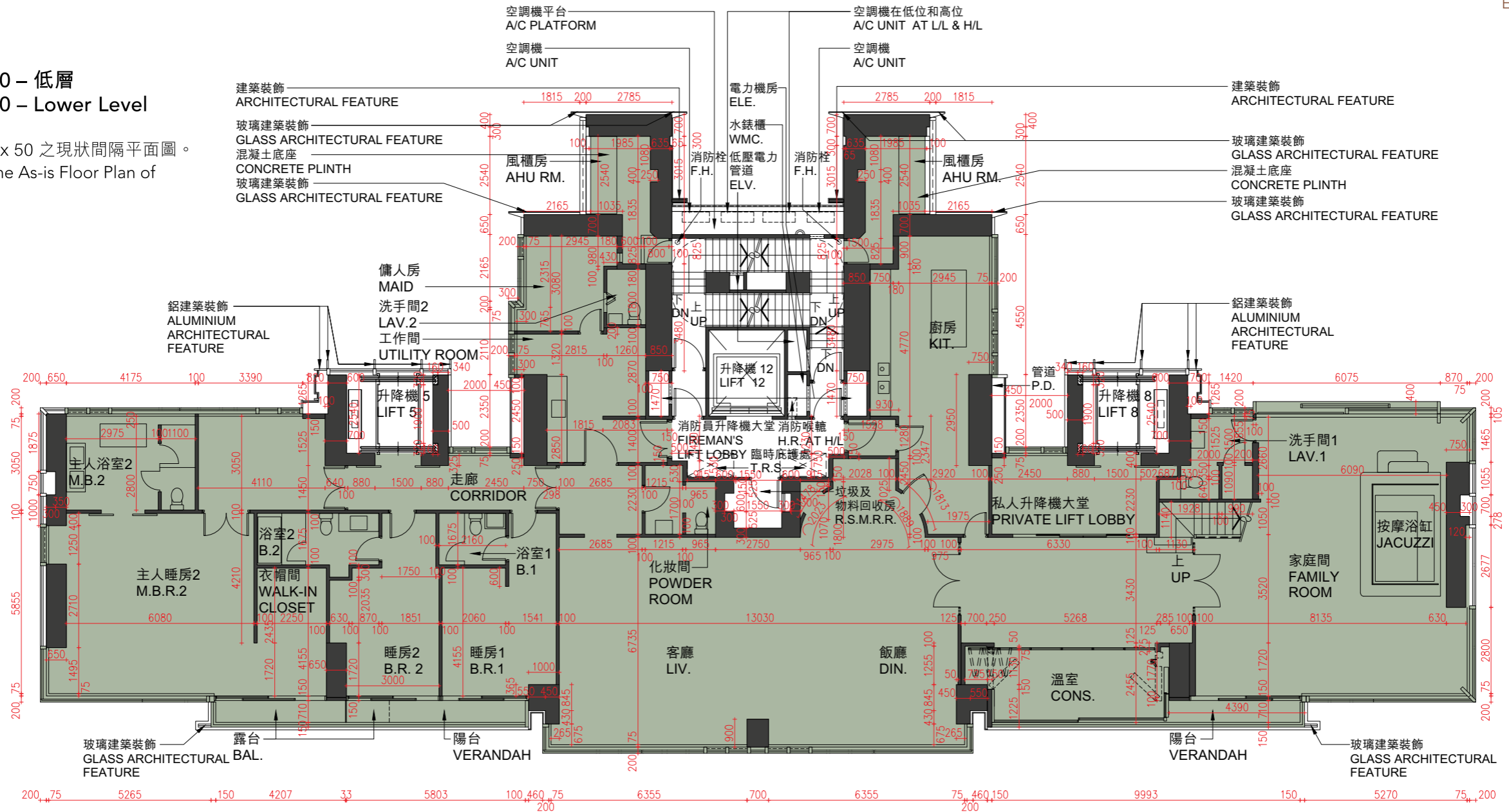
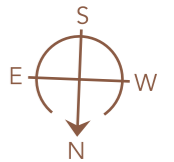
# 10 期數的住宅物業的樓面平面圖 FLOOR PLANS OF RESIDENTIAL PROPERTIES IN THE PHASE

## 第1座 TOWER 1

50樓  
50/F

### Duplex 50 – 低層 Duplex 50 – Lower Level

包括 Duplex 50 之現狀間隔平面圖。  
Including the As-is Floor Plan of Duplex 50.



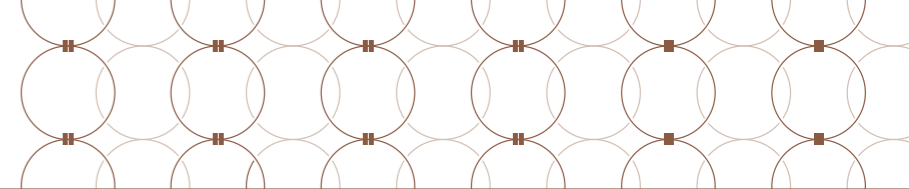
備註：平面圖所列數字為以毫米標示之建築結構尺寸。

Note: The dimensions of the floor plans are all structural dimensions measured in millimeters.

比例尺 Scale 0米(m) 5米(m)

# 10 期數的住宅物業的樓面平面圖

## FLOOR PLANS OF RESIDENTIAL PROPERTIES IN THE PHASE



每個住宅物業 Each Residential Property	樓層 FLOOR	第1座 TOWER 1
		單位 FLAT
		Duplex 50
樓板(不包括灰泥)的厚度(毫米) Thickness of Floor Slab (excluding plaster) (mm)	50樓 50/F	150, 175, 200, 250, 275
層與層之間的高度(毫米) Floor-to-Floor Height (mm)		3050, 3100, 3150, 3200, 3250, 3300, 3355, 3400, 3470, 3500, 3575, 7000

因住宅物業的較高樓層的結構牆的厚度遞減，較高樓層的內部面積，一般比較低樓層的內部面積稍大。

The internal areas of the residential properties on the upper floors will generally be slightly larger than those on the lower floors because of the reducing thickness of the structural walls on the upper floors.

請參閱本售樓說明書第68 - 70頁為住宅物業的樓面平面圖而設之備註和圖例。

Please refer to pages 68 - 70 of this sales brochure for the remarks and legends pertaining to the floor plans of the residential properties.

# 10 期數的住宅物業的樓面平面圖 FLOOR PLANS OF RESIDENTIAL PROPERTIES IN THE PHASE

## 第1座 TOWER 1

51樓  
51/F

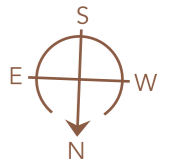
### Duplex 50 – 高層 Duplex 50 – Upper Level

Duplex 50 在發展項目落成後進行小型工程及/或獲《建築條例》(第123章)豁免的工程而有所改動。該等改動的大概位置已在本樓面平面圖中作出標示。

Duplex 50 has undergone alterations in the form of minor works and / or exempted works under the Buildings Ordinance (Cap.123) after the completion of the Development. The approximate locations of alterations are indicated on this floor plan.

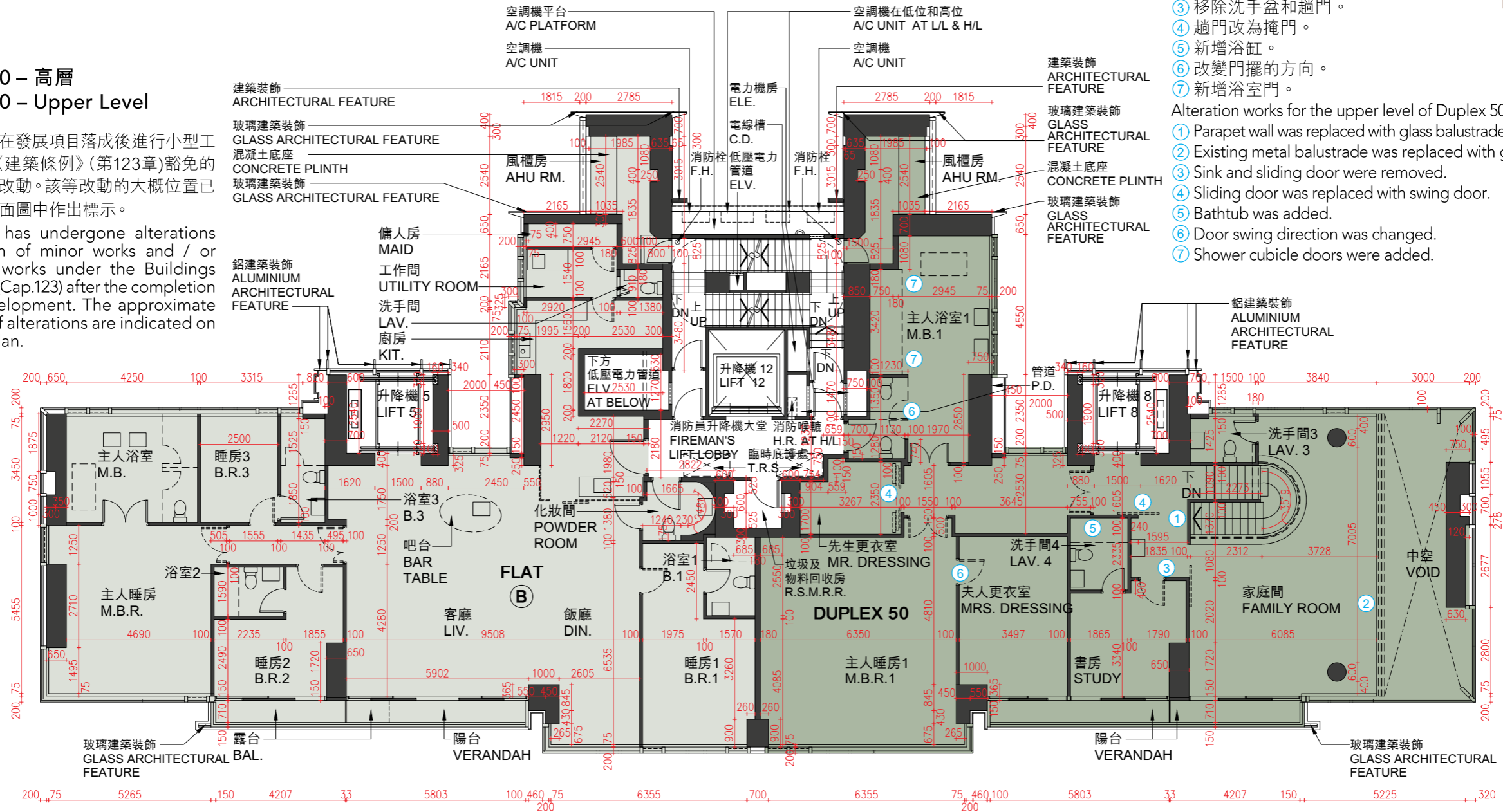
Duplex 50的複式高層改動工程包括：

- ① 將室內樓梯的護欄牆改為玻璃欄杆。
- ② 將現有金屬欄杆改為玻璃欄杆。
- ③ 移除洗手盆和趟門。
- ④ 趟門改為掩門。
- ⑤ 新增浴缸。
- ⑥ 改變門擺的方向。
- ⑦ 新增浴室門。



Alteration works for the upper level of Duplex 50 include:

- ① Parapet wall was replaced with glass balustrade at internal staircase.
- ② Existing metal balustrade was replaced with glass balustrade.
- ③ Sink and sliding door were removed.
- ④ Sliding door was replaced with swing door.
- ⑤ Bathtub was added.
- ⑥ Door swing direction was changed.
- ⑦ Shower cubicle doors were added.



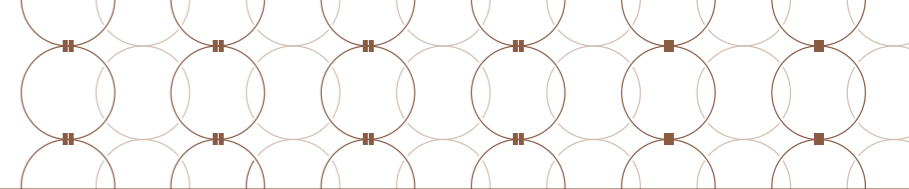
備註：平面圖所列數字為以毫米標示之建築結構尺寸。

Note: The dimensions of the floor plans are all structural dimensions measured in millimeters.

比例尺 Scale 0米(m) 5米(m)

# 10 期數的住宅物業的樓面平面圖

## FLOOR PLANS OF RESIDENTIAL PROPERTIES IN THE PHASE



每個住宅物業 Each Residential Property	樓層 FLOOR	第1座 TOWER 1	
		單位 FLAT	
		Duplex 50	B
樓板(不包括灰泥)的厚度(毫米) Thickness of Floor Slab (excluding plaster) (mm)	51樓 51/F	150, 200, 275	150, 200, 250, 275
層與層之間的高度(毫米) Floor-to-Floor Height (mm)		3150, 3200, 3250, 3350, 3470, 3500, 3550, 3770, 3800	3100, 3150, 3200, 3470, 3500, 3550, 3770, 3800

因住宅物業的較高樓層的結構牆的厚度遞減，較高樓層的內部面積，一般比較低樓層的內部面積稍大。

The internal areas of the residential properties on the upper floors will generally be slightly larger than those on the lower floors because of the reducing thickness of the structural walls on the upper floors.

請參閱本售樓說明書第68 - 70頁為住宅物業的樓面平面圖而設之備註和圖例。

Please refer to pages 68 - 70 of this sales brochure for the remarks and legends pertaining to the floor plans of the residential properties.

# 10 期數的住宅物業的樓面平面圖 FLOOR PLANS OF RESIDENTIAL PROPERTIES IN THE PHASE

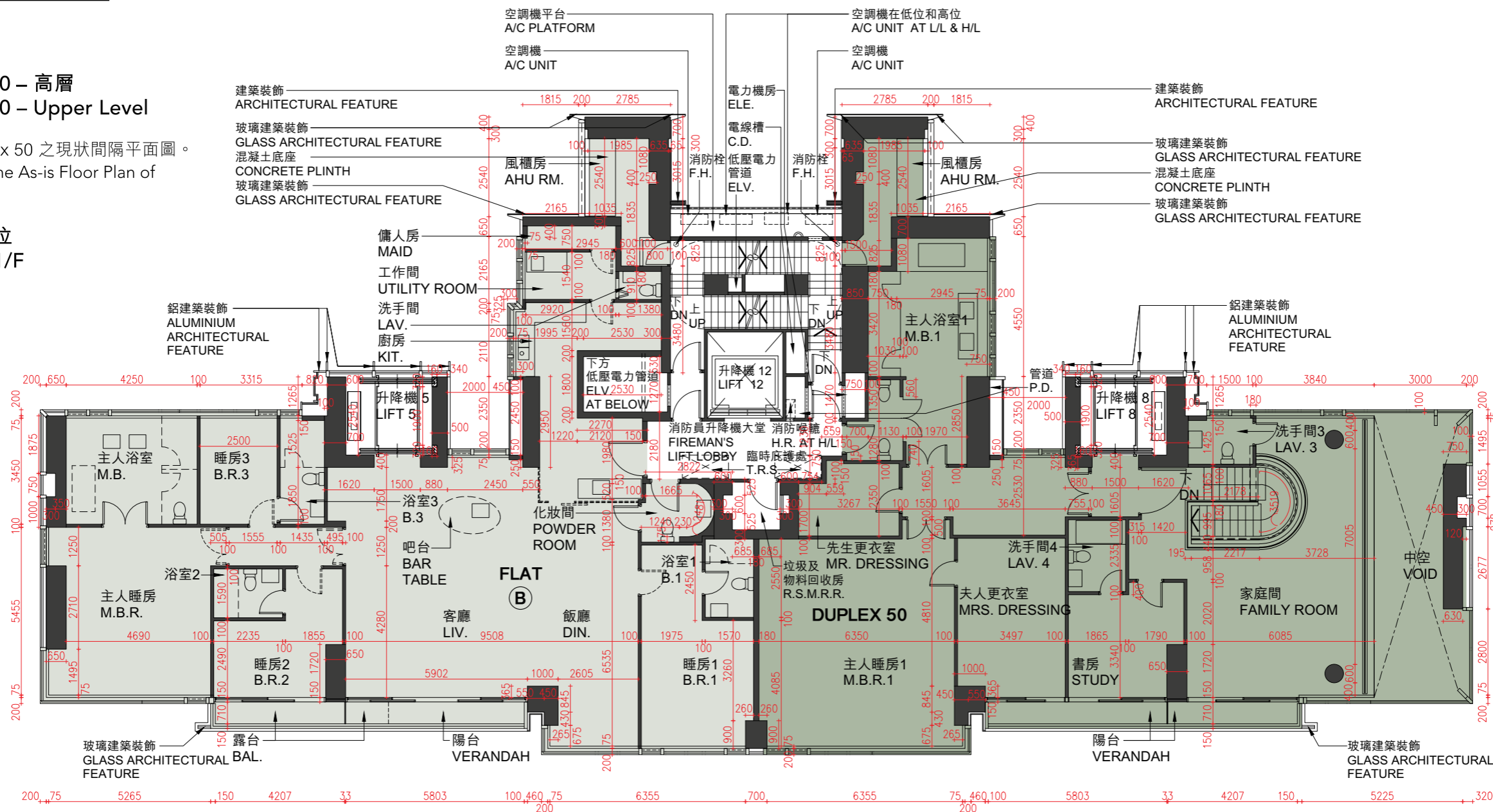
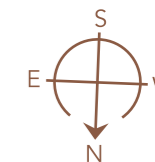
## 第1座 TOWER 1

51樓  
51/F

Duplex 50 – 高層  
Duplex 50 – Upper Level

包括 Duplex 50 之現狀間隔平面圖。  
Including the As-is Floor Plan of Duplex 50.

51樓B單位  
Flat B, 51/F



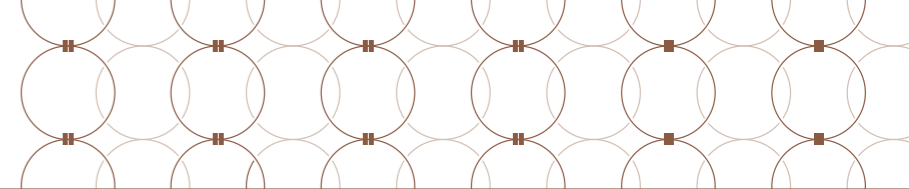
備註：平面圖所列數字為以毫米標示之建築結構尺寸。

Note: The dimensions of the floor plans are all structural dimensions measured in millimeters.

比例尺 Scale 0米(m) 5米(m)

# 10 期數的住宅物業的樓面平面圖

## FLOOR PLANS OF RESIDENTIAL PROPERTIES IN THE PHASE



每個住宅物業 Each Residential Property	樓層 FLOOR	第1座 TOWER 1	
		單位 FLAT	
		Duplex 50	B
樓板(不包括灰泥)的厚度(毫米) Thickness of Floor Slab (excluding plaster) (mm)	51樓 51/F	150, 200, 275	150, 200, 250, 275
層與層之間的高度(毫米) Floor-to-Floor Height (mm)		3150, 3200, 3250, 3350, 3470, 3500, 3550, 3770, 3800	3100, 3150, 3200, 3470, 3500, 3550, 3770, 3800

因住宅物業的較高樓層的結構牆的厚度遞減，較高樓層的內部面積，一般比較低樓層的內部面積稍大。

The internal areas of the residential properties on the upper floors will generally be slightly larger than those on the lower floors because of the reducing thickness of the structural walls on the upper floors.

請參閱本售樓說明書第68 - 70頁為住宅物業的樓面平面圖而設之備註和圖例。

Please refer to pages 68 - 70 of this sales brochure for the remarks and legends pertaining to the floor plans of the residential properties.

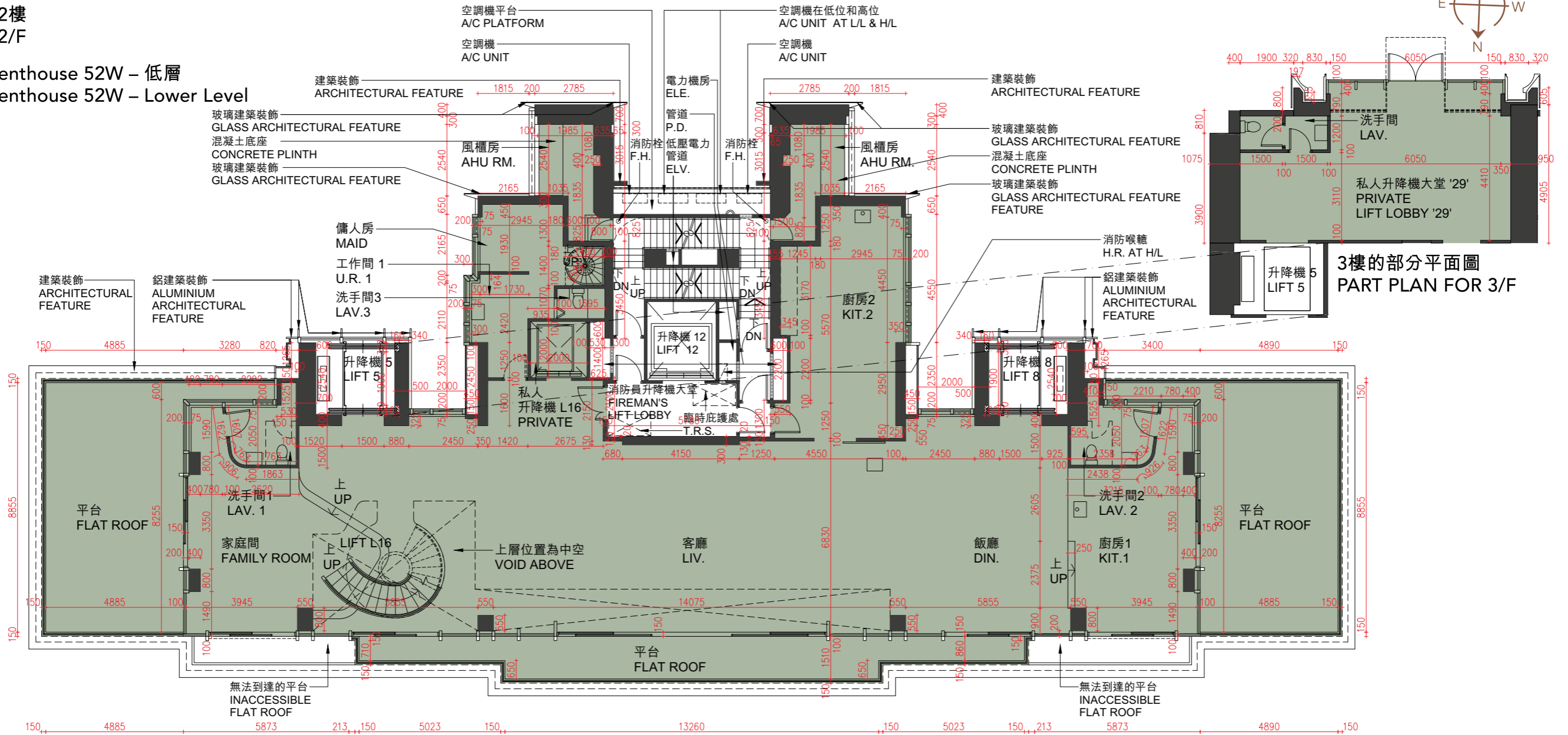
# 10 期數的住宅物業的樓面平面圖

## FLOOR PLANS OF RESIDENTIAL PROPERTIES IN THE PHASE

### 第1座 TOWER 1

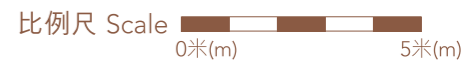
52樓  
52/F

Penthouse 52W – 低層  
Penthouse 52W – Lower Level



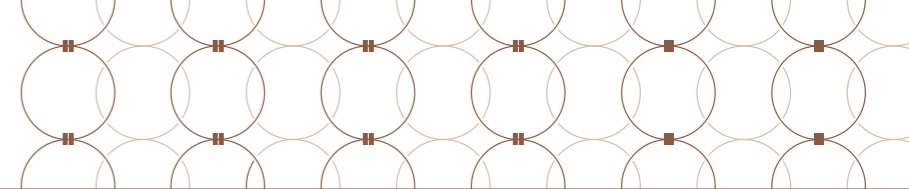
3樓的部分平面圖  
PART PLAN FOR 3/F

備註：平面圖所列數字為以毫米標示之建築結構尺寸。  
Note: The dimensions of the floor plans are all structural dimensions measured in millimeters.



# 10 期數的住宅物業的樓面平面圖

## FLOOR PLANS OF RESIDENTIAL PROPERTIES IN THE PHASE



每個住宅物業 Each Residential Property	樓層 FLOOR	單位 FLAT	第1座 TOWER 1
樓板(不包括灰泥)的厚度(毫米) Thickness of Floor Slab (excluding plaster) (mm)	3樓 3/F	Penthouse 52W	200
層與層之間的高度(毫米) Floor-to-Floor Height (mm)			5000, 8550, 8600
樓板(不包括灰泥)的厚度(毫米) Thickness of Floor Slab (excluding plaster) (mm)	52樓 52/F		150, 175, 200, 300, 400
層與層之間的高度(毫米) Floor-to-Floor Height (mm)			2850, 2900, 2950, 3000, 3100, 3150, 3170, 3200, 3250, 3300, 3350, 3400, 3450, 3470, 3500, 6970, 10600, 10700, 11000

因住宅物業的較高樓層的結構牆的厚度遞減，較高樓層的內部面積，一般比較低樓層的內部面積稍大。

The internal areas of the residential properties on the upper floors will generally be slightly larger than those on the lower floors because of the reducing thickness of the structural walls on the upper floors.

請參閱本售樓說明書第68 - 70頁為住宅物業的樓面平面圖而設之備註和圖例。

Please refer to pages 68 - 70 of this sales brochure for the remarks and legends pertaining to the floor plans of the residential properties.

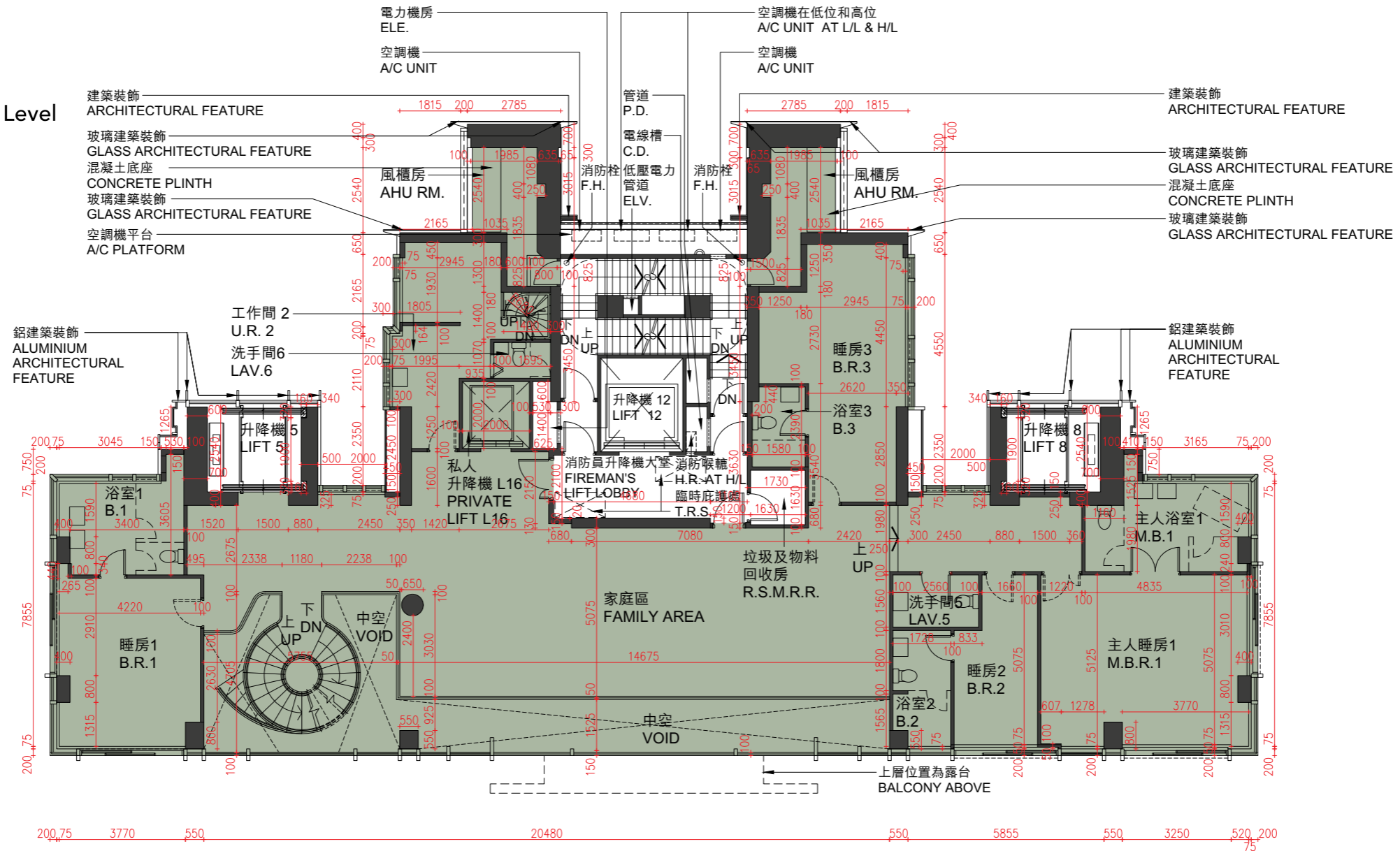
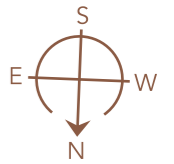
# 10 期數的住宅物業的樓面平面圖

## FLOOR PLANS OF RESIDENTIAL PROPERTIES IN THE PHASE

### 第1座 TOWER 1

53樓  
53/F

Penthouse 52W – 中層  
Penthouse 52W – Middle Level



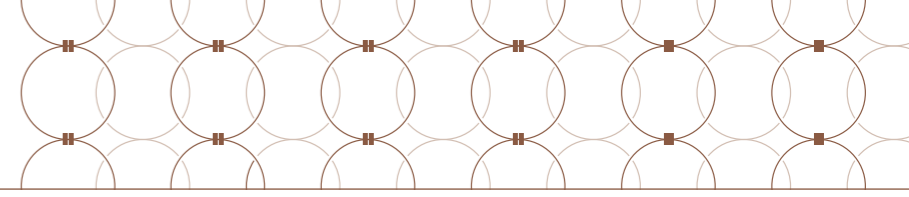
備註：平面圖所列數字為以毫米標示之建築結構尺寸。

Note: The dimensions of the floor plans are all structural dimensions measured in millimeters.

比例尺 Scale 0米(m) 5米(m)

# 10 期數的住宅物業的樓面平面圖

## FLOOR PLANS OF RESIDENTIAL PROPERTIES IN THE PHASE



每個住宅物業 Each Residential Property	樓層 FLOOR	單位 FLAT	第1座 TOWER 1
樓板(不包括灰泥)的厚度(毫米) Thickness of Floor Slab (excluding plaster) (mm)	53樓 53/F	Penthouse 52W	150, 175, 200, 300, 350
層與層之間的高度(毫米) Floor-to-Floor Height (mm)			2800, 2850, 2900, 2950, 3000, 3100, 3150, 3200, 3250, 3300, 3350, 3470, 3500

因住宅物業的較高樓層的結構牆的厚度遞減，較高樓層的內部面積，一般比較低樓層的內部面積稍大。

The internal areas of the residential properties on the upper floors will generally be slightly larger than those on the lower floors because of the reducing thickness of the structural walls on the upper floors.

請參閱本售樓說明書第68 - 70頁為住宅物業的樓面平面圖而設之備註和圖例。

Please refer to pages 68 - 70 of this sales brochure for the remarks and legends pertaining to the floor plans of the residential properties.

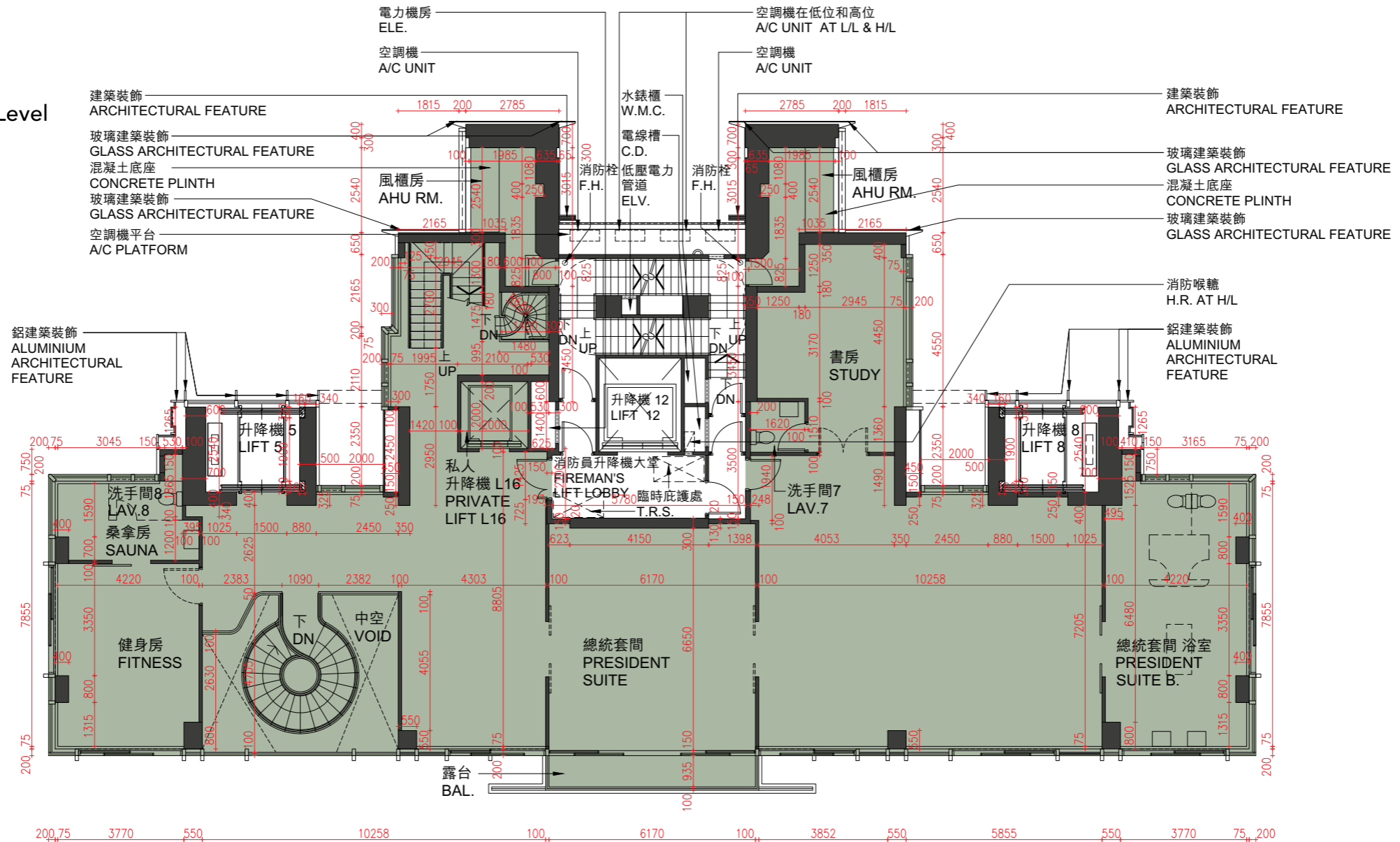
# 10 期數的住宅物業的樓面平面圖

## FLOOR PLANS OF RESIDENTIAL PROPERTIES IN THE PHASE

### 第1座 TOWER 1

55樓  
55/F

Penthouse 52W – 高層  
Penthouse 52W – Upper Level



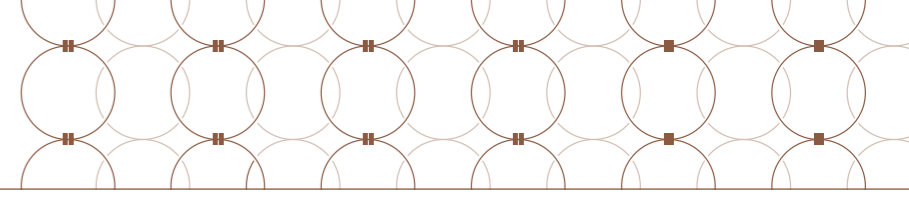
備註：平面圖所列數字為以毫米標示之建築結構尺寸。

Note: The dimensions of the floor plans are all structural dimensions measured in millimeters.

比例尺 Scale 0米(m) 5米(m)

# 10 期數的住宅物業的樓面平面圖

## FLOOR PLANS OF RESIDENTIAL PROPERTIES IN THE PHASE



每個住宅物業 Each Residential Property	樓層 FLOOR	單位 FLAT	第1座 TOWER 1
樓板(不包括灰泥)的厚度(毫米) Thickness of Floor Slab (excluding plaster) (mm)	55樓 55/F	Penthouse 52W	150, 175, 200, 250, 375
層與層之間的高度(毫米) Floor-to-Floor Height (mm)			3600, 3650, 3700, 3775, 4000, 4300, 4450

因住宅物業的較高樓層的結構牆的厚度遞減，較高樓層的內部面積，一般比較低樓層的內部面積稍大。

The internal areas of the residential properties on the upper floors will generally be slightly larger than those on the lower floors because of the reducing thickness of the structural walls on the upper floors.

請參閱本售樓說明書第68 - 70頁為住宅物業的樓面平面圖而設之備註和圖例。

Please refer to pages 68 - 70 of this sales brochure for the remarks and legends pertaining to the floor plans of the residential properties.

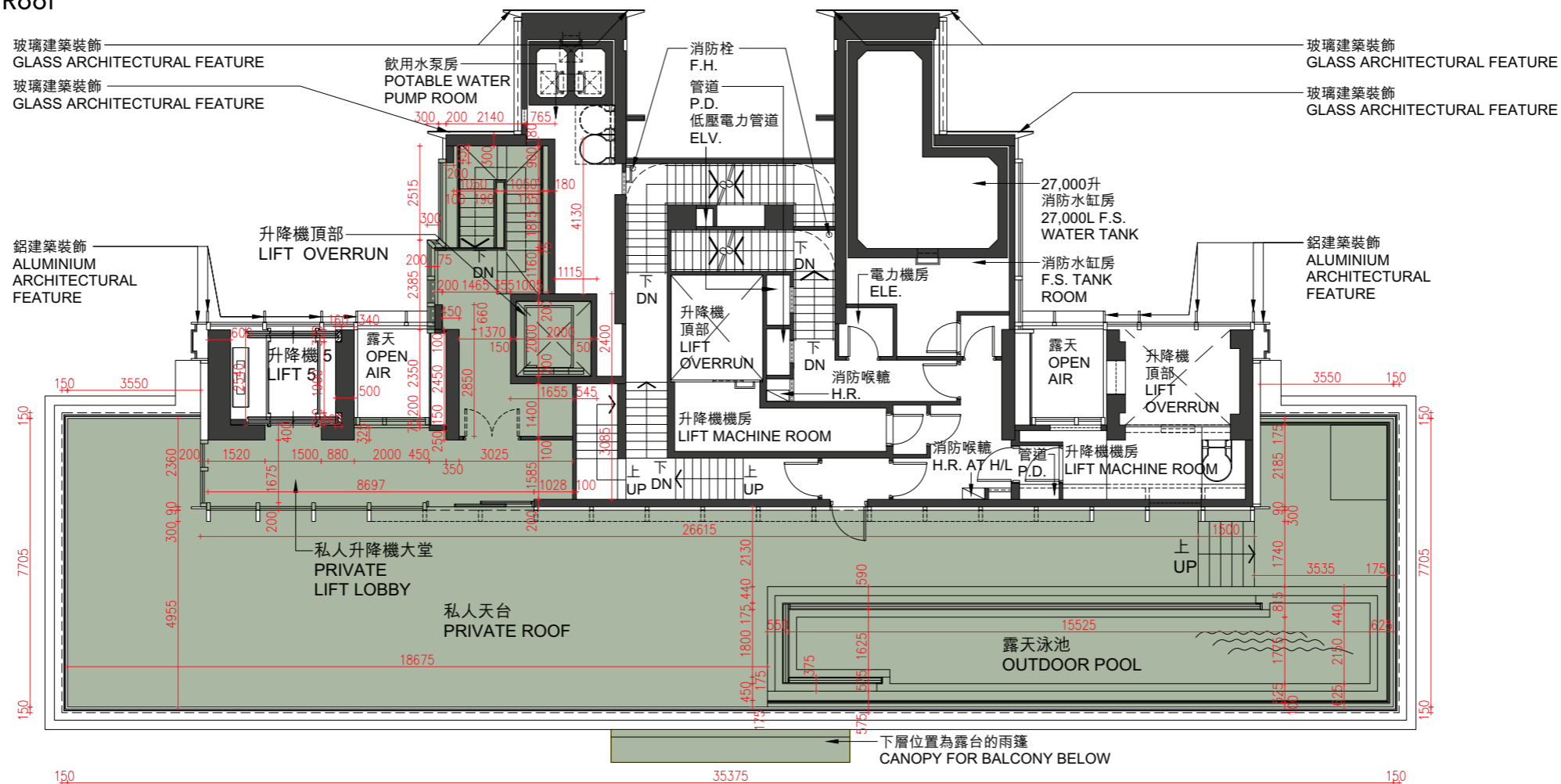
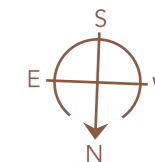
# 10 期數的住宅物業的樓面平面圖

## FLOOR PLANS OF RESIDENTIAL PROPERTIES IN THE PHASE

### 第1座 TOWER 1

天台  
ROOF

Penthouse 52W – 私人天台  
Penthouse 52W – Private Roof

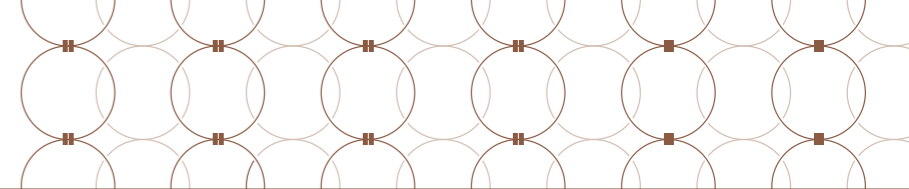


備註：平面圖所列數字為以毫米標示之建築結構尺寸。  
Note: The dimensions of the floor plans are all structural dimensions measured in millimeters.

比例尺 Scale 0米(m) 5米(m)

# 10 期數的住宅物業的樓面平面圖

## FLOOR PLANS OF RESIDENTIAL PROPERTIES IN THE PHASE



每個住宅物業 Each Residential Property	樓層 FLOOR	單位 FLAT	第1座 TOWER 1
樓板(不包括灰泥)的厚度(毫米) Thickness of Floor Slab (excluding plaster) (mm)	天台 Roof	Penthouse 52W	150
層與層之間的高度(毫米) Floor-to-Floor Height (mm)			5300, 5600, 5750, 6050

因住宅物業的較高樓層的結構牆的厚度遞減，較高樓層的內部面積，一般比較低樓層的內部面積稍大。

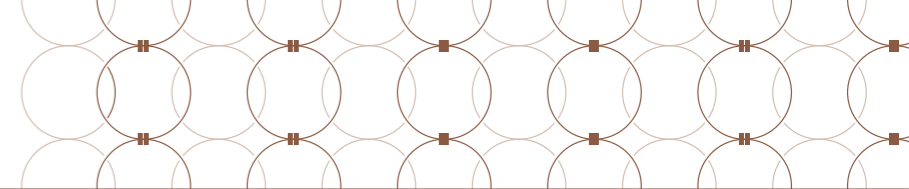
The internal areas of the residential properties on the upper floors will generally be slightly larger than those on the lower floors because of the reducing thickness of the structural walls on the upper floors.

請參閱本售樓說明書第68 - 70頁為住宅物業的樓面平面圖而設之備註和圖例。

Please refer to pages 68 - 70 of this sales brochure for the remarks and legends pertaining to the floor plans of the residential properties.

# 10 期數的住宅物業的樓面平面圖

## FLOOR PLANS OF RESIDENTIAL PROPERTIES IN THE PHASE



### 備註：

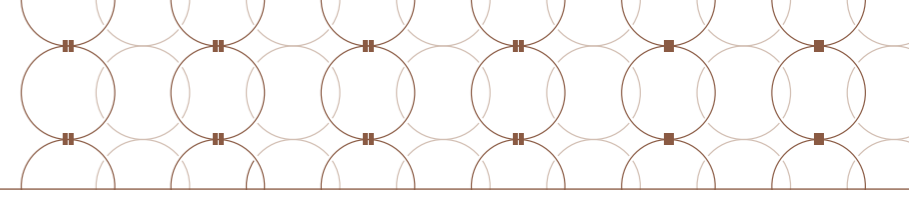
1. 部分樓層外牆範圍設有建築裝飾、金屬格柵及/或外露喉管，詳細資料請參考最新批准的建築圖則。
2. 部分住宅單位的露台、平台、空調機平台、外牆上或附近設有外露及/或外牆裝飾板內藏之公用喉管，詳細資料請參考最新批准的建築圖則及/或排水設施圖。
3. 部分住宅單位天花或設有跌級樓板用以安裝樓上單位之機電設備及/或假天花內裝置空調裝備及/或其他機電設備。
4. 部分工作間及部分洗手間內裝有外露喉管。
5. 部分露台及陽台上方裝有外露喉管。
6. 露台及陽台為非封閉的地方。
7. 各住宅物業的樓面平面圖內所展示之裝置及設備的圖標如浴缸、洗面盆、座廁、花灑、洗滌盆櫃等乃根據最新經批准的建築圖則擬備，其形狀、尺寸、比例或與實際提供的裝置及設備存在差異，僅供示意及參考之用。
8. 部分住宅單位之天花高度將會因應結構、建築及/或裝修設計上的需要而存在差異。

### Notes:

1. There are architectural features, metal grilles, and/or exposed pipes on the external walls of some floors. For details, please refer to the latest approved building plans.
2. Common pipes that are exposed and/or enclosed in cladding may be located at or adjacent to the balconies, flat roofs, air-conditioning platforms, or external walls of some residential units. For details, please refer to the latest approved building plans and/or drainage plans.
3. In some residential units, there may be sunken slabs for mechanical and electrical services of upper units, and/ or false ceilings with built-in air-conditioning fittings and/or other mechanical and electrical services.
4. There may be exposed pipes installed in some utility rooms and lavatories.
5. There may be exposed pipes located at the upper part of some balconies and verandahs.
6. Balconies and verandahs are non-enclosed areas.
7. The icons of fittings and appliances shown on the floor plans of residential units, such as bath tubs, wash basins, water closets, showers, sink, cabinets etc. are prepared in accordance with the latest approved building plans. Their shapes, dimensions, scales may vary from the fittings and appliances actually provided, and they are for indication and reference only.
8. The ceiling height in some residential units may vary due to structural, architectural and/or design requirements.

# 10 期數的住宅物業的樓面平面圖

## FLOOR PLANS OF RESIDENTIAL PROPERTIES IN THE PHASE



### 樓面平面圖之圖例

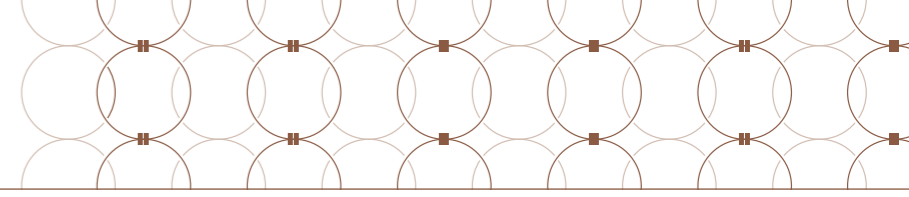
#### Legends of the Floor Plans

A/C UNIT	= 空調機	Air Conditioning Unit
A/C PLATFORM	= 空調機平台	Air Conditioning Platform
AHU RM.	= 風櫃房	Air Handling Unit Room
ALUMINIUM ARCHITECTURAL FEATURE	= 鋁建築裝飾	Aluminium Architectural Feature
ARCHITECTURAL FEATURE	= 建築裝飾	Architectural Feature
BAL.	= 露台	Balcony
BALCONY ABOVE	= 上層位置為露台	Balcony Above
BAR TABLE	= 吧台	Bar Table
B.1	= 浴室 1	Bathroom 1
B.2	= 浴室 2	Bathroom 2
B.3	= 浴室 3	Bathroom 3
B.R.1	= 睡房 1	Bedroom 1
B.R.2	= 睡房 2	Bedroom 2
B.R.3	= 睡房 3	Bedroom 3
CANOPY FOR BALCONY BELOW	= 下層位置為露台的雨篷	Canopy for Balcony Below
C.D.	= 電線槽	Conduit Duct
COMMON AREA	= 公用地方	Common Area
CONS.	= 溫室	Conservatory
CORRIDOR	= 走廊	Corridor
DIN.	= 飯廳	Dining Room
DN	= 下	Down
ELE.	= 電力機房	Electrical Room
ELV.	= 低壓電力管道	Extra-low Voltage Cable Duct
F.H.	= 消防栓	Fire Hydrant
F.S. TANK ROOM	= 消防水缸房	Fire Services Tank Room
F.S. WATER TANK	= 消防水缸	Fire Services Water Tank
FAMILY AREA	= 家庭區	Family Area
FAMILY ROOM	= 家庭間	Family Room

FILTRATION PLANT ROOM	= 過濾機房	Filtration Plant Room
FIREMAN'S LIFT LOBBY	= 消防員升降機大堂	Fireman's Lift Lobby
FITNESS	= 健身房	Fitness Room
FLAT ROOF	= 平台	Flat Roof
GARDEN	= 花園	Garden
GLASS ARCHITECTURAL FEATURE	= 玻璃建築裝飾	Glass Architectural Feature
H/L	= 高位	High Level
H.R.	= 消防喉轆	Hose Reel
INACCESSIBLE FLAT ROOF	= 無法到達的平台	Inaccessible Flat Roof
JACUZZI	= 按摩浴缸	Jacuzzi
KIT.	= 廚房	Kitchen
KIT.1	= 廚房 1	Kitchen 1
KIT.2	= 廚房 2	Kitchen 2
L/L	= 低位	Low Level
LAV.	= 洗手間	Lavatory
LAV.1	= 洗手間 1	Lavatory 1
LAV.2	= 洗手間 2	Lavatory 2
LAV.3	= 洗手間 3	Lavatory 3
LAV.4	= 洗手間 4	Lavatory 4
LAV.5	= 洗手間 5	Lavatory 5
LAV.6	= 洗手間 6	Lavatory 6
LAV.7	= 洗手間 7	Lavatory 7
LAV.8	= 洗手間 8	Lavatory 8
LANDSCAPED AREA	= 景觀區	Landscaped Area
LIFT	= 升降機	Lift
LIFT EMERGENCY DOOR	= 升降機緊急門	Lift Emergency Door
LIFT MACHINE ROOM	= 升降機機房	Lift Machine Room
LIFT OVERRUN	= 升降機頂部	Lift Overrun
LIV.	= 客廳	Living Room

# 10 期數的住宅物業的樓面平面圖

## FLOOR PLANS OF RESIDENTIAL PROPERTIES IN THE PHASE



### 樓面平面圖之圖例

#### Legends of the Floor Plans

MAID	= 傭人房	Maid Room
M.B.	= 主人浴室	Master Bathroom
M.B.1	= 主人浴室 1	Master Bathroom 1
M.B.2	= 主人浴室 2	Master Bathroom 2
M.B.R.	= 主人睡房	Master Bedroom
M.B.R.1	= 主人睡房 1	Master Bedroom 1
M.B.R.2	= 主人睡房 2	Master Bedroom 2
MR. DRESSING	= 先生更衣室	Mr. Dressing Room
MRS. DRESSING	= 夫人更衣室	Mrs. Dressing Room
OPEN AIR	= 露天	Open Air
OUTDOOR POOL	= 露天泳池	Outdoor Pool
P.D.	= 管道	Pipe Duct
POWDER ROOM	= 化妝間	Powder Room
POTABLE WATER PUMP ROOM	= 飲用水泵房	Potable Water Pump Room
PRESIDENT SUITE	= 總統套房	Presidential Suite
PRESIDENT SUITE B.	= 總統套房浴室	Presidential Suite Bathroom
PRIVATE LIFT	= 私人升降機	Private Lift
PRIVATE LIFT LOBBY	= 私人升降機大堂	Private Lift Lobby
PRIVATE ROOF	= 私人天台	Private Roof
R.S.M.R.R.	= 垃圾及物料回收房	Refuse Storage & Material Recovery Room
SAUNA	= 桑拿房	Sauna Room
STORE	= 儲物室	Store Room
STORE 1	= 儲物室 1	Store Room 1
STORE 2	= 儲物室 2	Store Room 2
STORE 3	= 儲物室 3	Store Room 3
STORE 4	= 儲物室 4	Store Room 4

STUDY	= 書房	Study Room
SWIMMING POOL	= 泳池	Swimming Pool
T.R.S.	= 臨時庇護處	Temporary Refuge Space
UP	= 上	Up
U.R.	= 工作間	Utility Room
U.R.1	= 工作間 1	Utility Room 1
U.R.2	= 工作間 2	Utility Room 2
VERANDAH	= 陽台	Verandah
VOID	= 中空	Void
VOID ABOVE	= 上層位置為中空	Void Above
WALK-IN CLOSET	= 衣帽間	Walk-in Closet
W.M.C.	= 水錶櫃	Water Meter Cabinet