

# FLOOR PLANS OF RESIDENTIAL PROPERTIES IN THE DEVELOPMENT

## 發展項目的住宅物業的樓面平面圖

The remarks and legends on this page apply to all pages of "Floor plans of residential properties in the Development".  
在本頁上之備註和圖例適用於全部的「發展項目的住宅物業的樓面平面圖」頁數。

### Legends of the floor plans

#### 樓面平面圖圖例

ARCH. FEATURE	= ARCHITECTURAL FEATURE	= 建築特色
A.D.	= AIR DUCT	= 風槽
A/C	= AIR CONDITIONERS	= 冷氣
E.L.E.	= ELECTRICITY DUCT	= 電力槽
E.L.V.	= EXTRA LOW VOLTAGE DUCT	= 特低電壓槽
F.A.	= FLUE APERTURE	= 通風孔
H.R.	= HOSE REEL	= 消防喉轆
LAV.	= LAVATORY	= 洗手間
P.D.	= PIPE DUCT	= 管道槽
R.S. & M.R.R.	= REFUSE STORAGE AND MATERIAL RECOVERY ROOM	= 垃圾及物料回收房
T.R.S.	= TEMPORARY REFUGE SPACE	= 臨時庇護處
W.M.R	= WATER METER ROOM	= 水錶房

#### Remarks:

1. There are architectural features, metal grilles and/or exposed pipes on the external walls of some of the floors. For details, please refer to the latest approved building plans and/or approved drainage plans and/or other relevant plans.
2. Common pipes exposed and/or enclosed in cladding are located at/adjacent to the balcony and/or flat roof and/or external wall of some residential properties. For details, please refer to the latest approved building plans and/or approved drainage plans and/or other relevant plans.
3. There are sunken slabs for mechanical and electrical services and/or false ceiling/bulkheads for the air-conditioning fittings and/or mechanical and electrical services at some residential properties.
4. Balconies are non-enclosed areas.
5. Symbols of fittings and fitments such as sink, water closet, sink counter, etc. in the floor plans are prepared based on the latest approved building plans and are for general indication only.

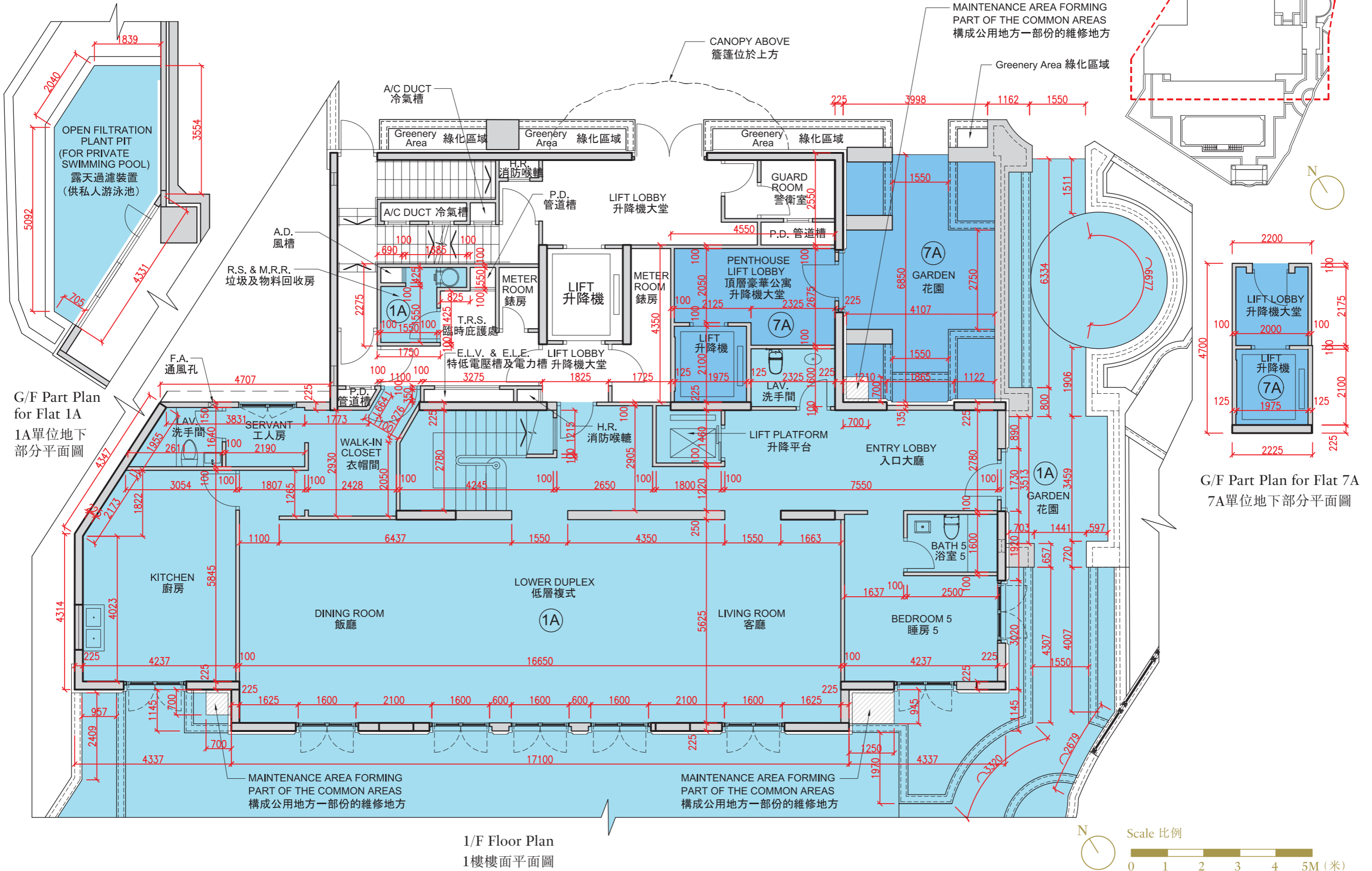
#### 備註：

1. 部分樓層外牆範圍設有建築裝飾、金屬格柵及/外露喉管，詳細資料請參考最新經批准的建築圖則及/或經批准的排水設施圖則及/或其他相關圖則。
2. 部分住宅物業的露台及/或平台及/或外牆上/附近設有外露及/或覆蓋板內藏之公用喉管，詳細資料請參考最新經批准的建築圖則及/或經批准的排水設施圖則及/或其他相關圖則。
3. 部分住宅物業有用以安裝機電設備的跌級樓板及/或用以裝置空調裝備及/或其他機電設備的假天花/裝飾橫樑。
4. 露台為不可封閉的地方。
5. 樓面平面圖上所顯示的裝置符號，如洗滌盆、坐廁、洗滌盆櫃等乃按最新經批准的建築圖則繪製只作一般示意用途。

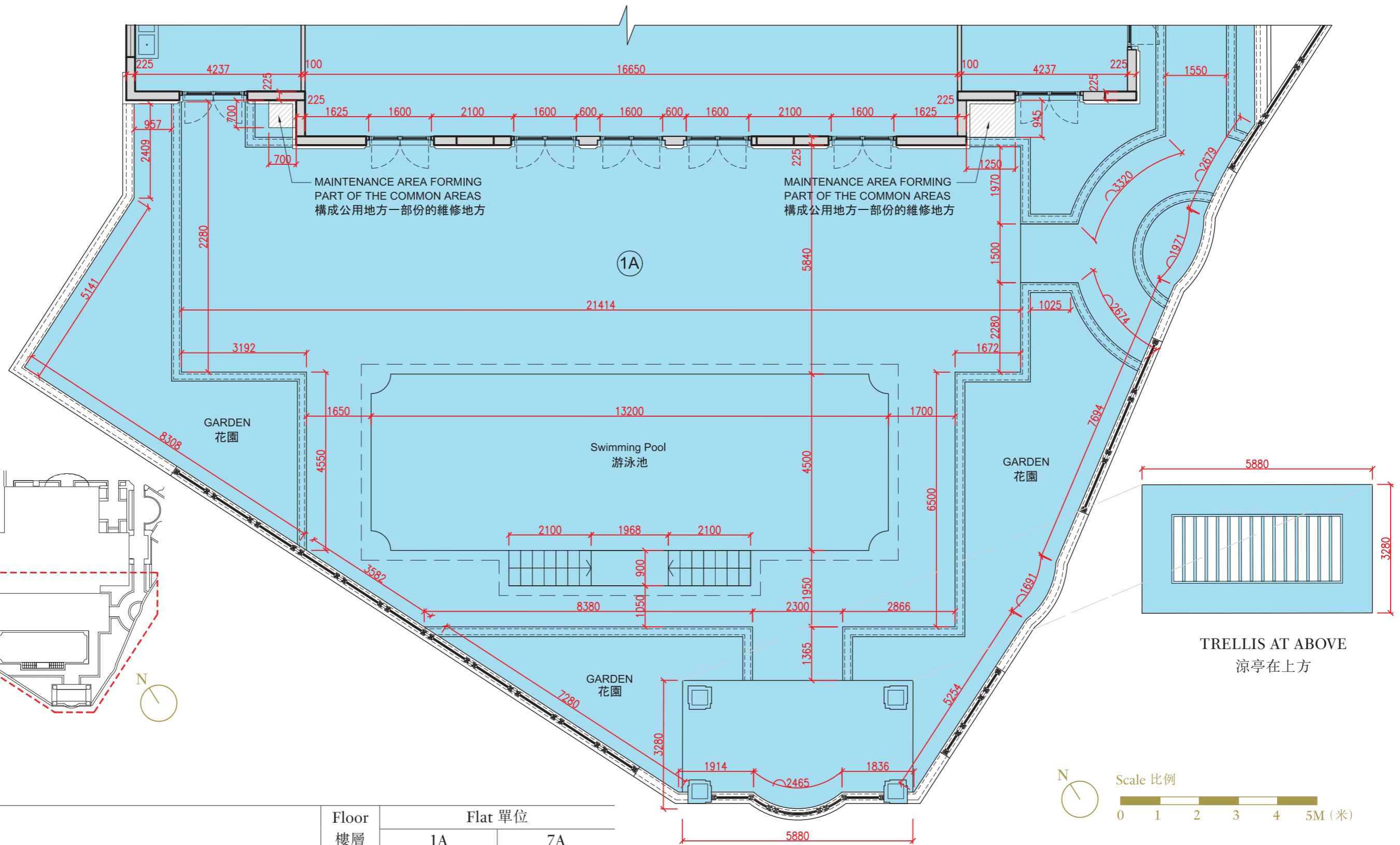
# FLOOR PLANS OF RESIDENTIAL PROPERTIES IN THE DEVELOPMENT 發展項目的住宅物業的樓面平面圖

**G/F & 1/F**  
地下及1樓

**Key Plan**  
索引圖



1/F  
1樓



Key Plan  
索引圖

TRELLIS AT ABOVE  
涼亭在上方

Description 描述	Floor 樓層	Flat 單位	
		1A	7A
Thickness of Floor Slab (excluding plaster) of each residential property (mm) 每個住宅物業的樓板 (不包括灰泥) 的厚度 (毫米)	G/F 地下	Not Applicable 不適用	150, 300
	1/F 1樓	150, 300	150, 300
The floor-to-floor height (refers to the height between the top surface of the structural slab of a floor and the top surface of the structural slab of its immediate upper floor) of each residential property (mm) 每個住宅物業的層與層之間的高度 (指該樓層之石屎地台面與上一層石屎地台面之高度距離) (毫米)	G/F 地下	Not Applicable 不適用	4000
	1/F 1樓	3025, 3300, 3325, 3500, 3800	3025, 3500

The internal areas of the residential properties on the upper floors will generally be slightly larger than those on the lower floors because of the reducing thickness of the structural walls on the upper floors.  
因住宅物業的較高樓層的結構牆的厚度遞減，較高樓層的內部面積，一般比較低樓層的內部面積稍大。

Notes:

1. The dimensions in the floor plans are all structural dimensions in millimetre.
2. Please refer to page 19 for legends of the abbreviations shown on the floor plan.

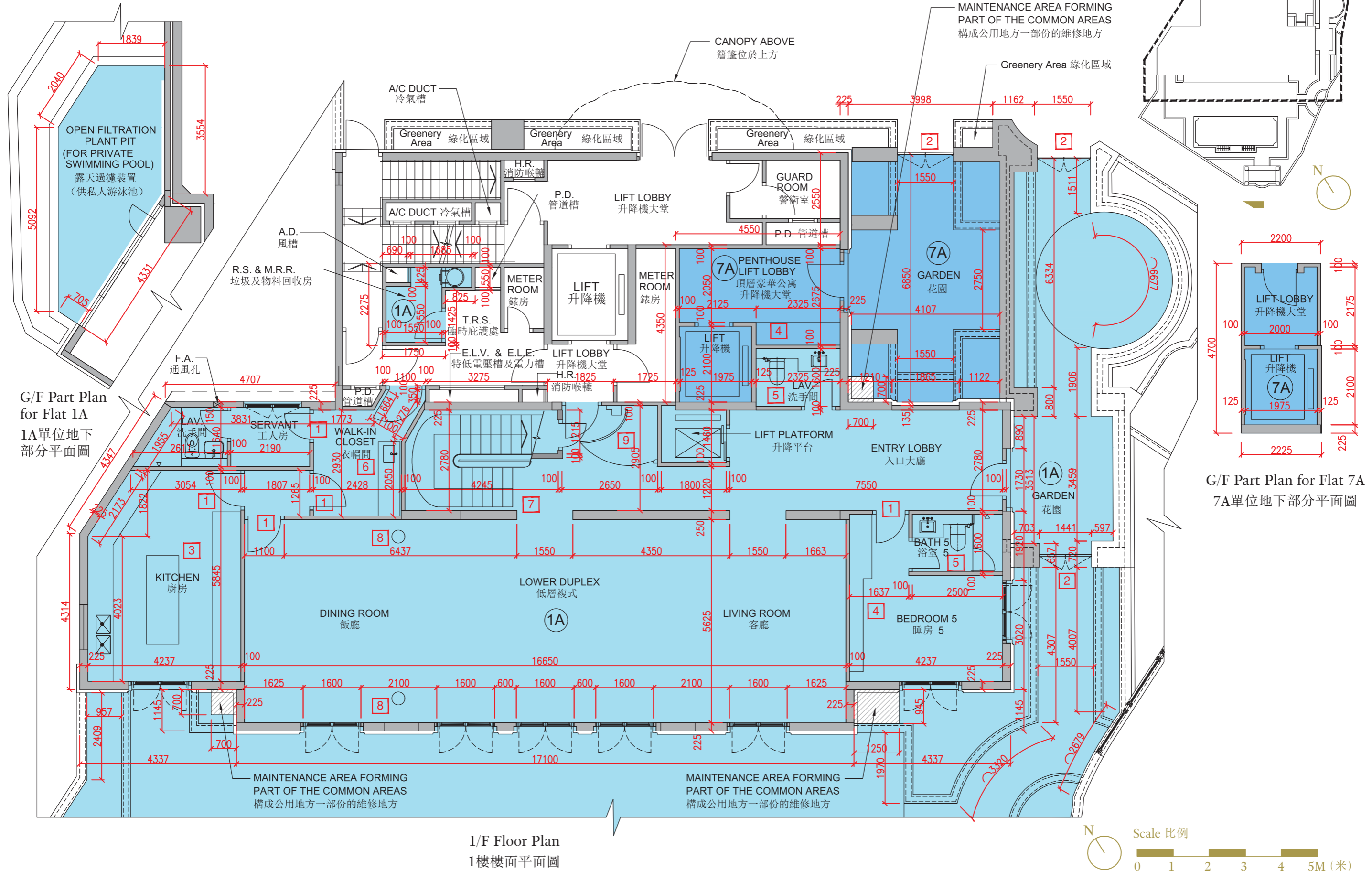
備註:

1. 樓面平面圖之尺規所列數字為以毫米標示之建築結構尺寸。
2. 有關樓面平面圖中顯示之名詞之註釋，請參閱第19頁之圖例。

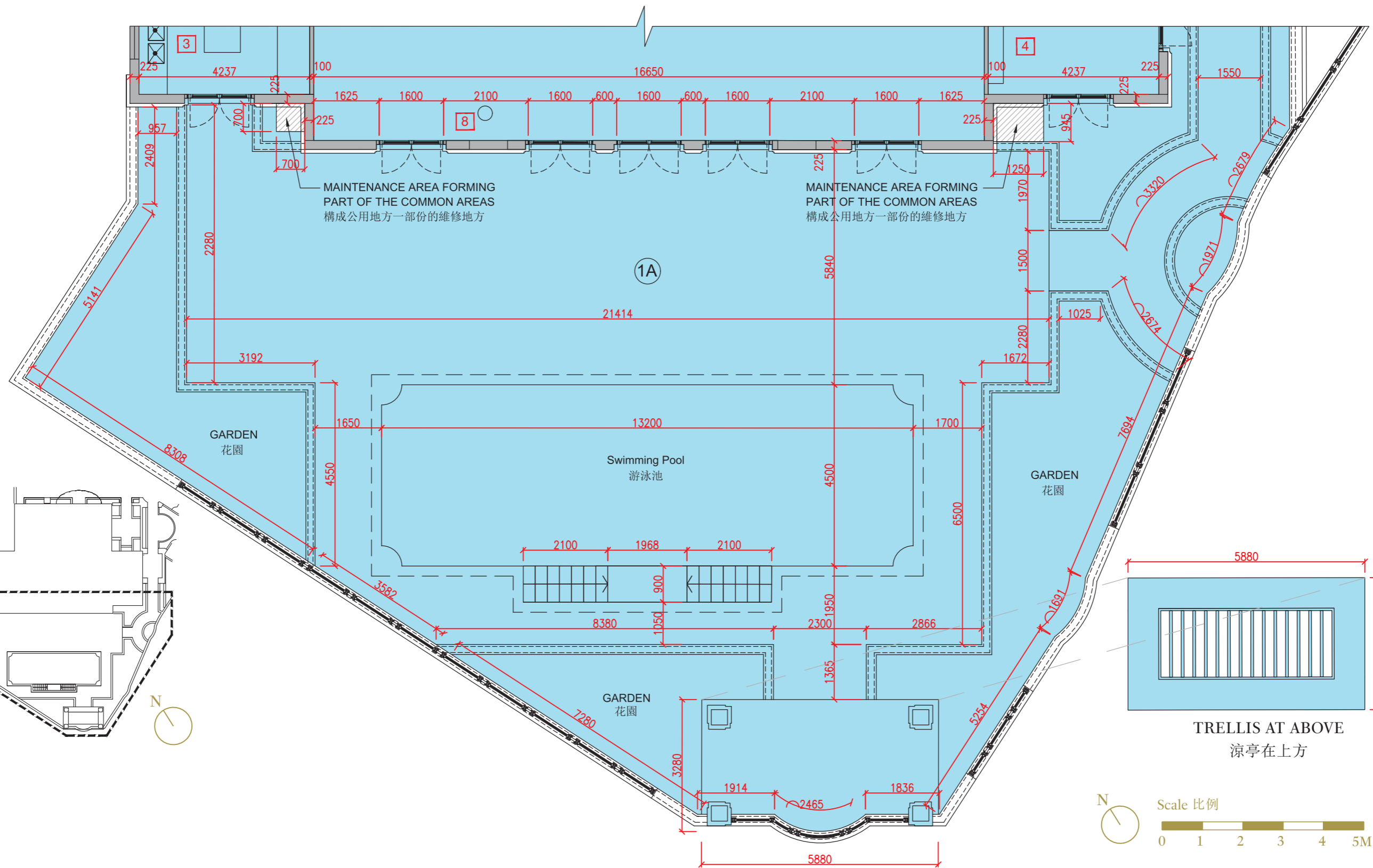
# FLOOR PLANS OF RESIDENTIAL PROPERTIES IN THE DEVELOPMENT 發展項目的住宅物業的樓面平面圖

**G/F & 1/F Showing As-is Layout**  
地下及1樓現狀間隔

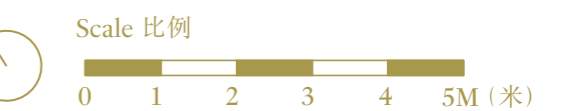
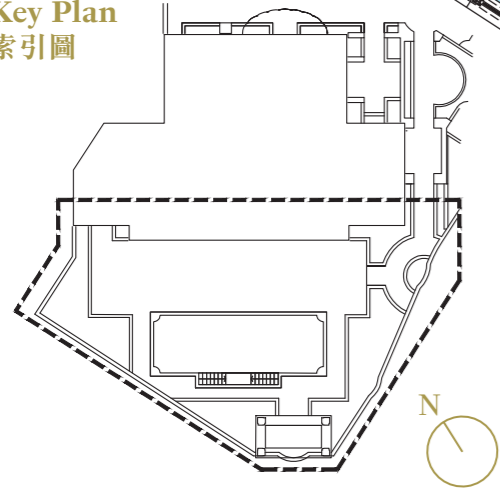
**Key Plan**  
索引圖



1/F  
1樓



Key Plan  
索引圖



Notes:

The relevant parts of Flat 1A and Flat 7A respectively have been altered by way of minor works, designated exempted works, or exempted works under the Buildings Ordinance after completion of the Development, the latest condition of which is shown on the relevant floor plans showing as-is layout. The alteration works are as follows:

- |   |  |
|---|--|
| 1. Swing door has been installed.               | 6. Cabinet and sink unit has been installed.             |
| 2. Metal gate has been installed.               | 7. Design of staircase is modified.                      |
| 3. Kitchen cabinet has been installed.          | 8. Decorative non- structural column has been installed. |
| 4. Cabinet has been installed.                  | 9. Movable partition has been installed.                 |
| 5. Design of bathroom and lavatory is modified. |  |

Notes:

- The dimensions in the floor plans are all structural dimensions in millimetre.
- Please refer to page 19 for legends of the abbreviations shown on the floor plan.

備註:

1A 單位及 7A 單位有關部份分別因在發展項目落成後進行小型工程、指定豁免工程或獲《建築物條例》豁免的工程而有所改動，現狀請參閱有關現狀間隔平面圖。該等改動如下：

- |                |              |
|----------------|--------------|
| 1. 安裝掩門。       | 6. 安裝櫃及洗滌盆。  |
| 2. 安裝金屬閘門。     | 7. 修改樓梯設計。   |
| 3. 安裝廚櫃。       | 8. 安裝非結構裝飾柱。 |
| 4. 安裝櫃。        | 9. 安裝活動間隔。   |
| 5. 修改浴室及洗手間設計。 |              |

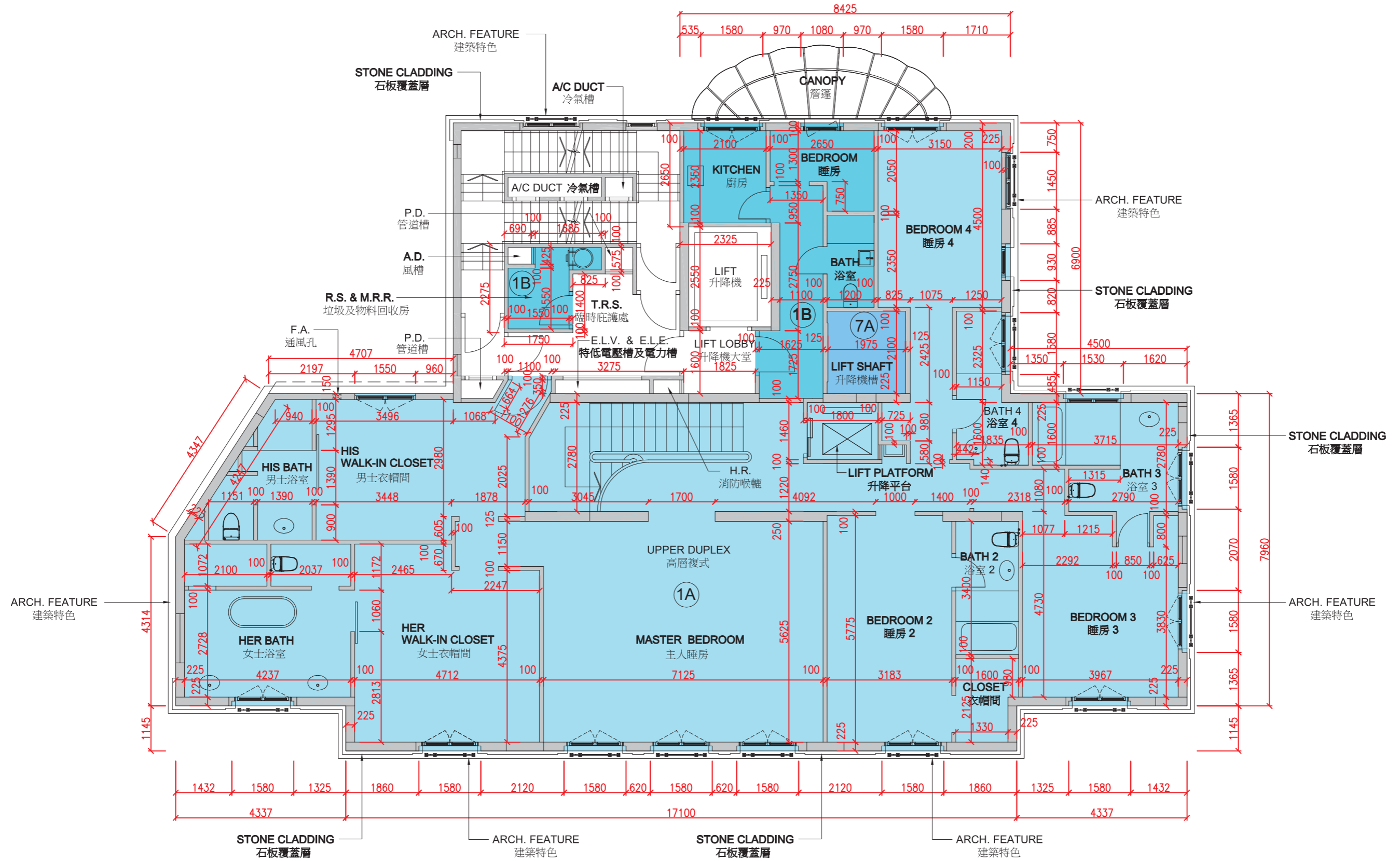
備註:

- 樓面平面圖之尺規所列數字為以毫米標示之建築結構尺寸。
- 有關樓面平面圖中顯示之名詞之註釋，請參閱第19頁之圖例。

# FLOOR PLANS OF RESIDENTIAL PROPERTIES IN THE DEVELOPMENT

## 發展項目的住宅物業的樓面平面圖

2/F  
2樓



Scale 比例



**FLOOR PLANS OF RESIDENTIAL PROPERTIES IN THE DEVELOPMENT**  
**發展項目的住宅物業的樓面平面圖**

Description 描述	Floor 樓層	Flat 單位		
		1A	1B	7A
Thickness of Floor Slab (excluding plaster) of each residential property (mm) 每個住宅物業的樓板（不包括灰泥）的厚度（毫米）	2/F 2樓	150,300	150,300	Not Applicable 不適用
The floor-to-floor height (refers to the height between the top surface of the structural slab of a floor and the top surface of the structural slab of its immediate upper floor) of each residential property (mm) 每個住宅物業的層與層之間的高度（指該樓層之石屎地台面與上一層石屎地台面之高度距離）（毫米）		3000, 3025, 3150, 3250, 3500, 3700, 3975	3025, 3200, 3500, 3975	Not Applicable 不適用

The internal areas of the residential properties on the upper floors will generally be slightly larger than those on the lower floors because of the reducing thickness of the structural walls on the upper floors.

因住宅物業的較高樓層的結構牆的厚度遞減，較高樓層的內部面積，一般比較低樓層的內部面積稍大。

Notes:

1. The dimensions in the floor plans are all structural dimensions in millimetre.
2. Please refer to page 19 for legends of the abbreviations shown on the floor plan.

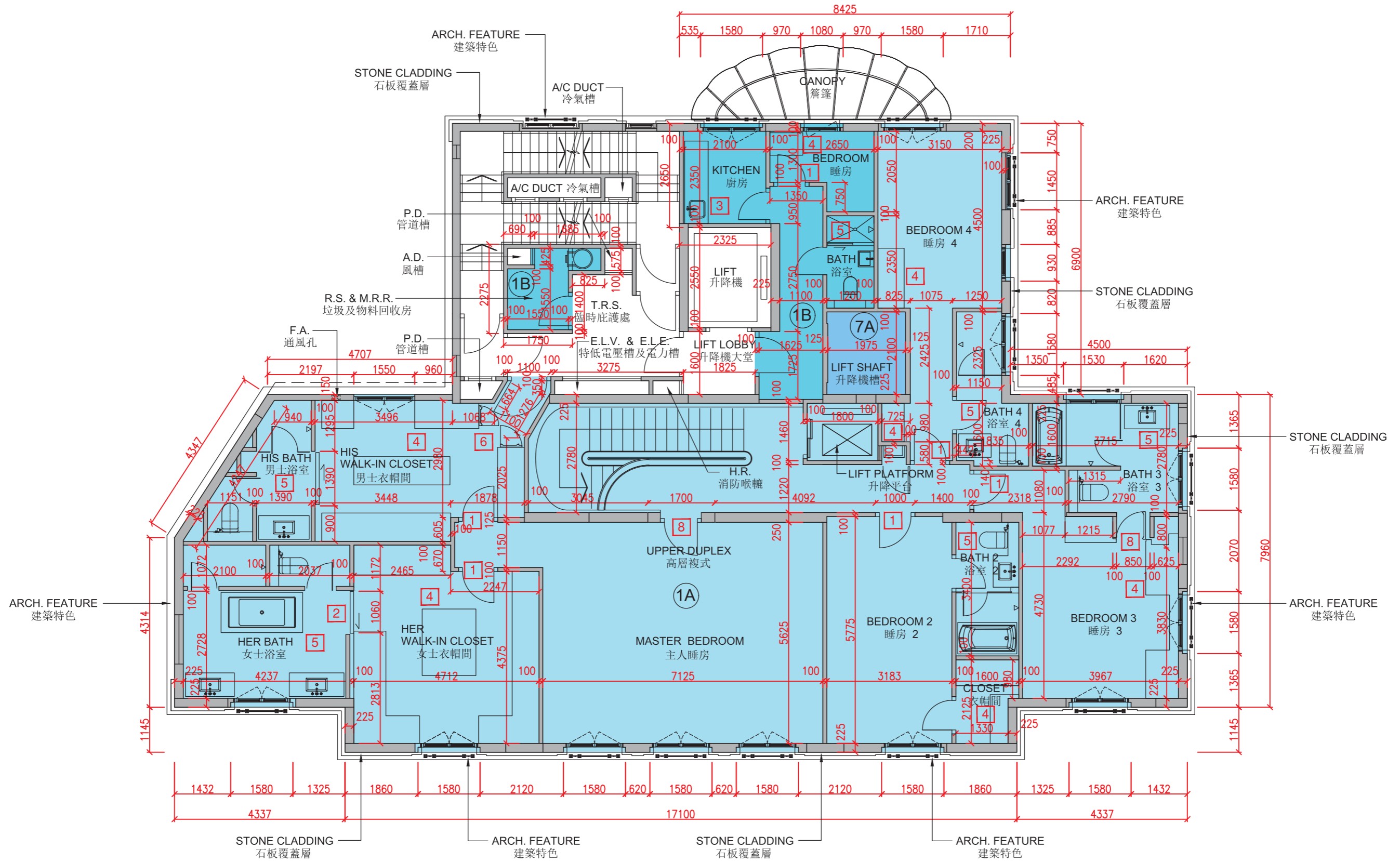
備註：

1. 樓面平面圖之尺規所列數字為以毫米標示之建築結構尺寸。
2. 有關樓面平面圖中顯示之名詞之註釋，請參閱第19頁之圖例。

# FLOOR PLANS OF RESIDENTIAL PROPERTIES IN THE DEVELOPMENT

## 發展項目的住宅物業的樓面平面圖

### 2/F Showing As-is Layout 2樓現狀間隔



## FLOOR PLANS OF RESIDENTIAL PROPERTIES IN THE DEVELOPMENT

### 發展項目的住宅物業的樓面平面圖

#### Notes:

The relevant parts of Flat 1A and Flat 1B respectively been altered by way of minor works, designated exempted works, or exempted works under the Buildings Ordinance after completion of the Development, the latest condition of which is shown on floor plans showing as-is layout. The alteration works are as follows:

1. Swing door has been installed.
2. Wall and sliding door have been shifted.
3. Kitchen cabinet has been installed.
4. Cabinet has been installed.
5. Design of bathroom is modified.
6. Movable partition has been installed.
7. Design of staircase is modified.
8. Partition has been amended. Swing door has been installed.

#### 備註：

1A 單位及 1B 單位有關部份分別因在發展項目落成後進行小型工程、指定豁免工程或獲《建築物條例》豁免的工程而有所改動，現狀請參閱有關現狀間隔平面圖。該等改動如下：

1. 安裝掩門。
2. 牆及趟門移位。
3. 安裝廚櫃。
4. 安裝櫃。
5. 修改浴室設計。
6. 安裝活動間隔。
7. 修改樓梯設計。
8. 改動間隔。安裝掩門。

#### Notes:

1. The dimensions in the floor plans are all structural dimensions in millimetre.
2. Please refer to page 19 for legends of the abbreviations shown on the floor plan.

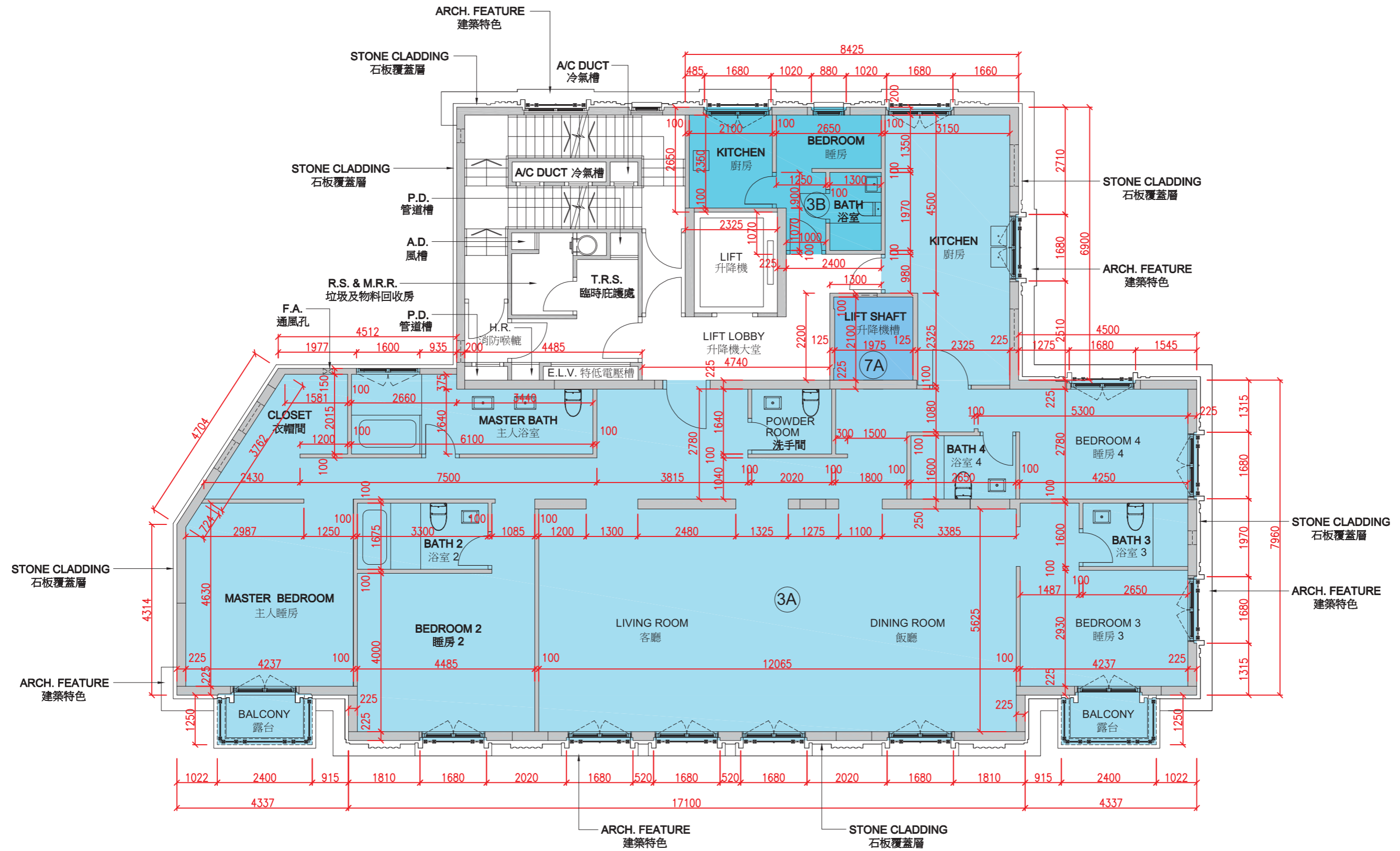
#### 備註：

1. 樓面平面圖之尺規所列數字為以毫米標示之建築結構尺寸。
2. 有關樓面平面圖中顯示之名詞之註釋，請參閱第19頁之圖例。

# FLOOR PLANS OF RESIDENTIAL PROPERTIES IN THE DEVELOPMENT

## 發展項目的住宅物業的樓面平面圖

3/F  
3樓



**FLOOR PLANS OF RESIDENTIAL PROPERTIES IN THE DEVELOPMENT**  
**發展項目的住宅物業的樓面平面圖**

Description 描述	Floor 樓層	Flat 單位		
		3A	3B	7A
Thickness of Floor Slab (excluding plaster) of each residential property (mm) 每個住宅物業的樓板（不包括灰泥）的厚度（毫米）	3/F 3樓	150, 300	150, 300	Not Applicable 不適用
The floor-to-floor height (refers to the height between the top surface of the structural slab of a floor and the top surface of the structural slab of its immediate upper floor) of each residential property (mm) 每個住宅物業的層與層之間的高度（指該樓層之石屎地台面與上一層石屎地台面之高度距離）（毫米）		3000, 3025, 3150, 3500, 3975, 4000	3025, 3150, 3500	Not Applicable 不適用

The internal areas of the residential properties on the upper floors will generally be slightly larger than those on the lower floors because of the reducing thickness of the structural walls on the upper floors.

因住宅物業的較高樓層的結構牆的厚度遞減，較高樓層的內部面積，一般比較低樓層的內部面積稍大。

Notes:

1. The dimensions in the floor plans are all structural dimensions in millimetre.
2. Please refer to page 19 for legends of the abbreviations shown on the floor plan.

備註：

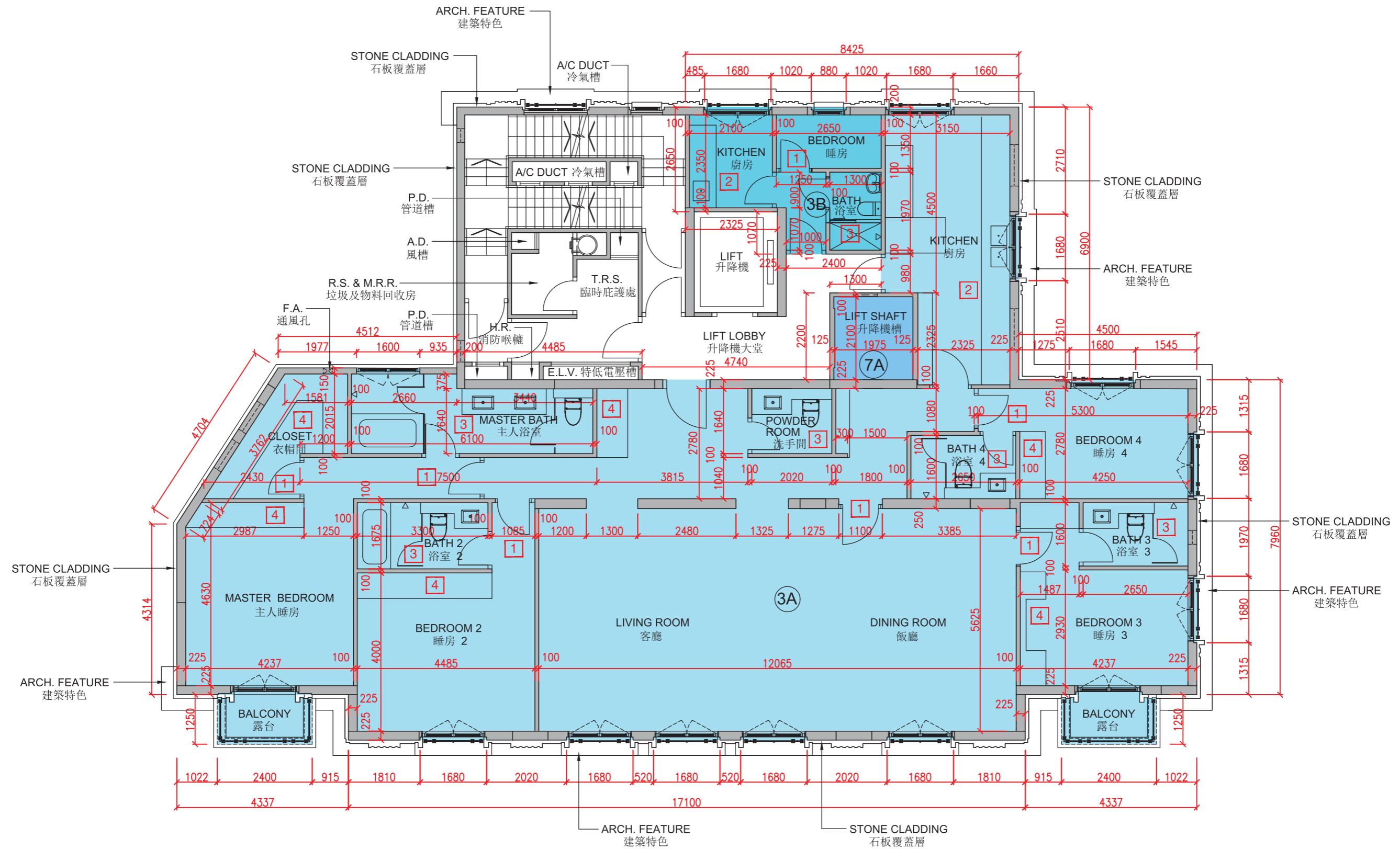
1. 樓面平面圖之尺規所列數字為以毫米標示之建築結構尺寸。
2. 有關樓面平面圖中顯示之名詞之註釋，請參閱第19頁之圖例。

# FLOOR PLANS OF RESIDENTIAL PROPERTIES IN THE DEVELOPMENT

## 發展項目的住宅物業的樓面平面圖

### 3/F Showing As-is Layout

### 3樓現狀間隔



Scale 比例



## FLOOR PLANS OF RESIDENTIAL PROPERTIES IN THE DEVELOPMENT

### 發展項目的住宅物業的樓面平面圖

#### Notes:

The relevant parts of Flat 3A and Flat 3B respectively have been altered by way of minor works, designated exempted works, or exempted works under the Buildings Ordinance after completion of the Development, the latest condition of which is shown on floor plans showing as-is layout. The alteration works are as follows:

1. Swing door has been installed.
2. Kitchen cabinet has been installed.
3. Design of bathroom and powder room is modified.
4. Cabinet has been installed.

#### 備註：

3A 單位及 3B 單位有關部份分別因在發展項目落成後進行小型工程、指定豁免工程或獲《建築物條例》豁免的工程而有所改動，現狀請參閱有關現狀間隔平面圖。該等改動如下：

1. 安裝掩門。
2. 安裝廚櫃。
3. 修改浴室及洗手間設計。
4. 安裝櫃。

#### Notes:

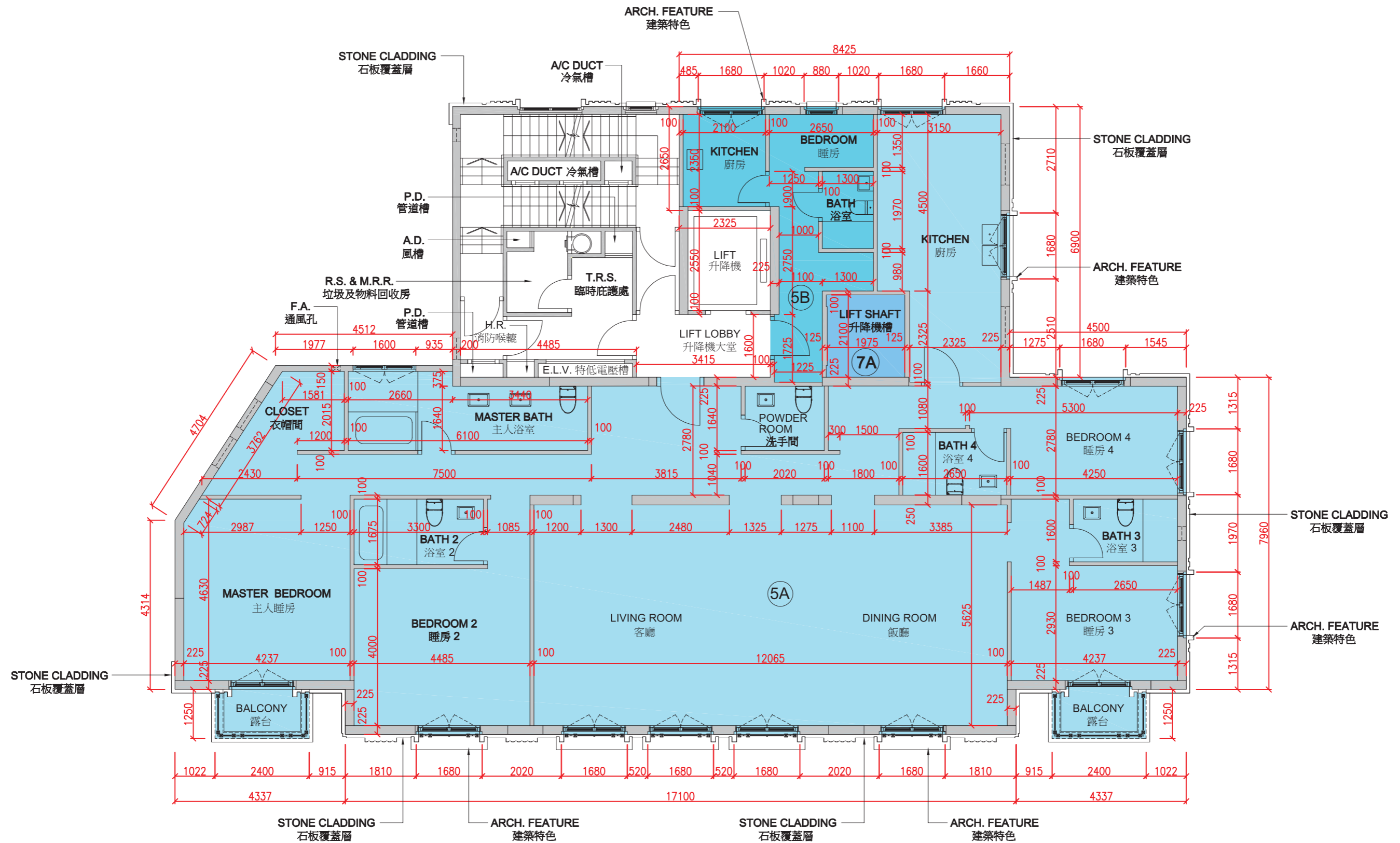
1. The dimensions in the floor plans are all structural dimensions in millimetre.
2. Please refer to page 19 for legends of the abbreviations shown on the floor plan.

#### 備註：

1. 樓面平面圖之尺規所列數字為以毫米標示之建築結構尺寸。
2. 有關樓面平面圖中顯示之名詞之註釋，請參閱第19頁之圖例。

FLOOR PLANS OF RESIDENTIAL PROPERTIES IN THE DEVELOPMENT  
發展項目的住宅物業的樓面平面圖

5/F  
5樓



Scale 比例



**FLOOR PLANS OF RESIDENTIAL PROPERTIES IN THE DEVELOPMENT**  
**發展項目的住宅物業的樓面平面圖**

Description 描述	Floor 樓層	Flat 單位		
		5A	5B	7A
Thickness of Floor Slab (excluding plaster) of each residential property (mm) 每個住宅物業的樓板（不包括灰泥）的厚度（毫米）	5/F 5樓	150,300	150,300	Not Applicable 不適用
The floor-to-floor height (refers to the height between the top surface of the structural slab of a floor and the top surface of the structural slab of its immediate upper floor) of each residential property (mm) 每個住宅物業的層與層之間的高度（指該樓層之石屎地台面與上一層石屎地台面之高度距離）（毫米）		3500	3500	Not Applicable 不適用

The internal areas of the residential properties on the upper floors will generally be slightly larger than those on the lower floors because of the reducing thickness of the structural walls on the upper floors.

因住宅物業的較高樓層的結構牆的厚度遞減，較高樓層的內部面積，一般比較低樓層的內部面積稍大。

Notes:

1. The dimensions in the floor plans are all structural dimensions in millimetre.
2. Please refer to page 19 for legends of the abbreviations shown on the floor plan.

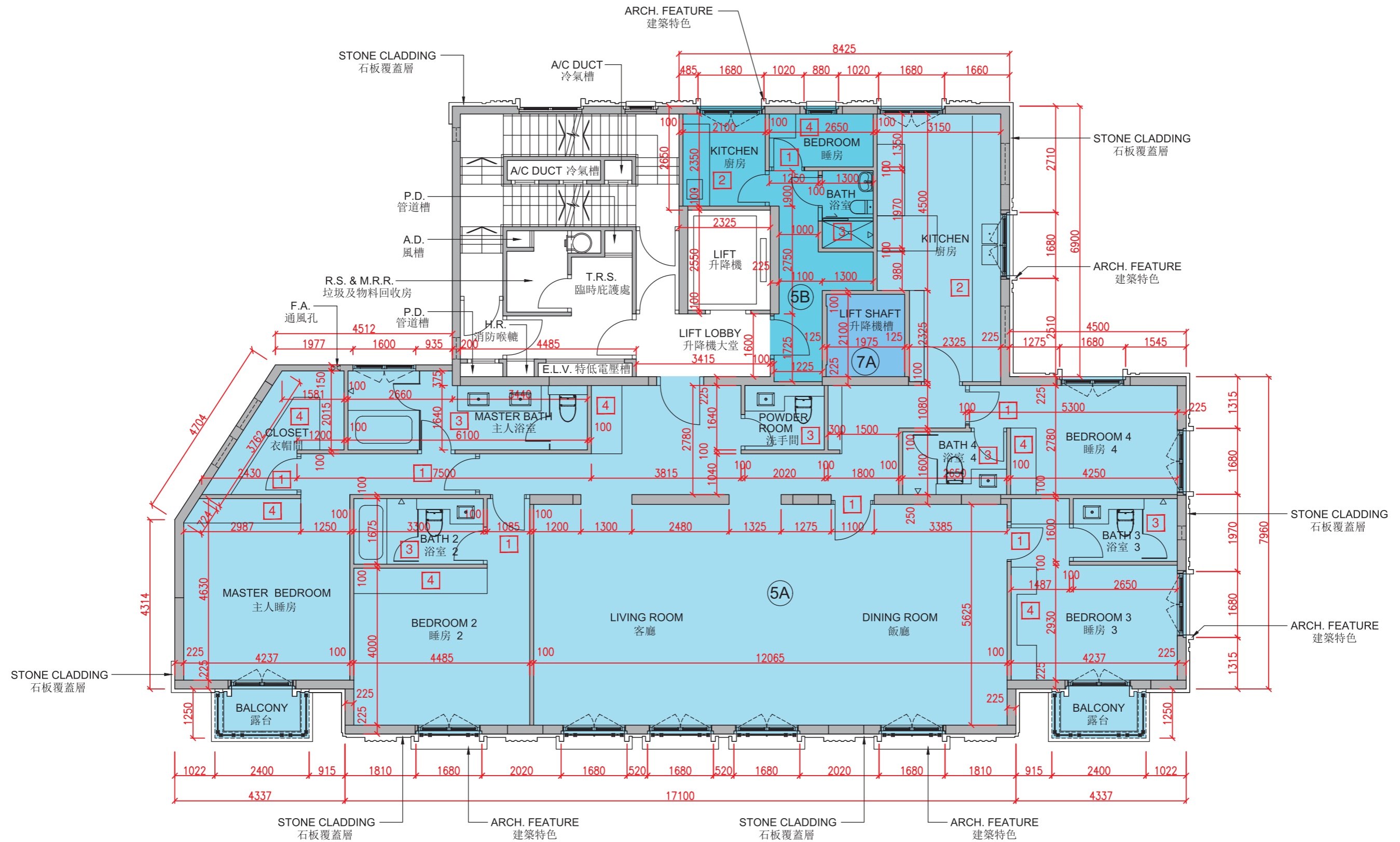
備註：

1. 樓面平面圖之尺規所列數字為以毫米標示之建築結構尺寸。
2. 有關樓面平面圖中顯示之名詞之註釋，請參閱第19頁之圖例。

# FLOOR PLANS OF RESIDENTIAL PROPERTIES IN THE DEVELOPMENT

## 發展項目的住宅物業的樓面平面圖

5/F Showing As-is Layout  
5樓現狀間隔



Scale 比例



## FLOOR PLANS OF RESIDENTIAL PROPERTIES IN THE DEVELOPMENT

### 發展項目的住宅物業的樓面平面圖

#### Notes:

The relevant parts of Flat 5A and Flat 5B respectively have been altered by way of minor works, designated exempted works, or exempted works under the Buildings Ordinance after completion of the Development, the latest condition of which is shown on floor plans showing as-is layout. The alteration works are as follows:

1. Swing door has been installed.
2. Kitchen cabinet has been installed.
3. Design of bathroom and powder room is modified.
4. Cabinet has been installed.

#### 備註：

5A 單位及 5B 單位有關部份分別因在發展項目落成後進行小型工程、指定豁免工程或獲《建築物條例》豁免的工程而有所改動，現狀請參閱有關現狀間隔平面圖。該等改動如下：

1. 安裝掩門。
2. 安裝廚櫃。
3. 修改浴室及洗手間設計。
4. 安裝櫃。

#### Notes:

1. The dimensions in the floor plans are all structural dimensions in millimetre.
2. Please refer to page 19 for legends of the abbreviations shown on the floor plan.

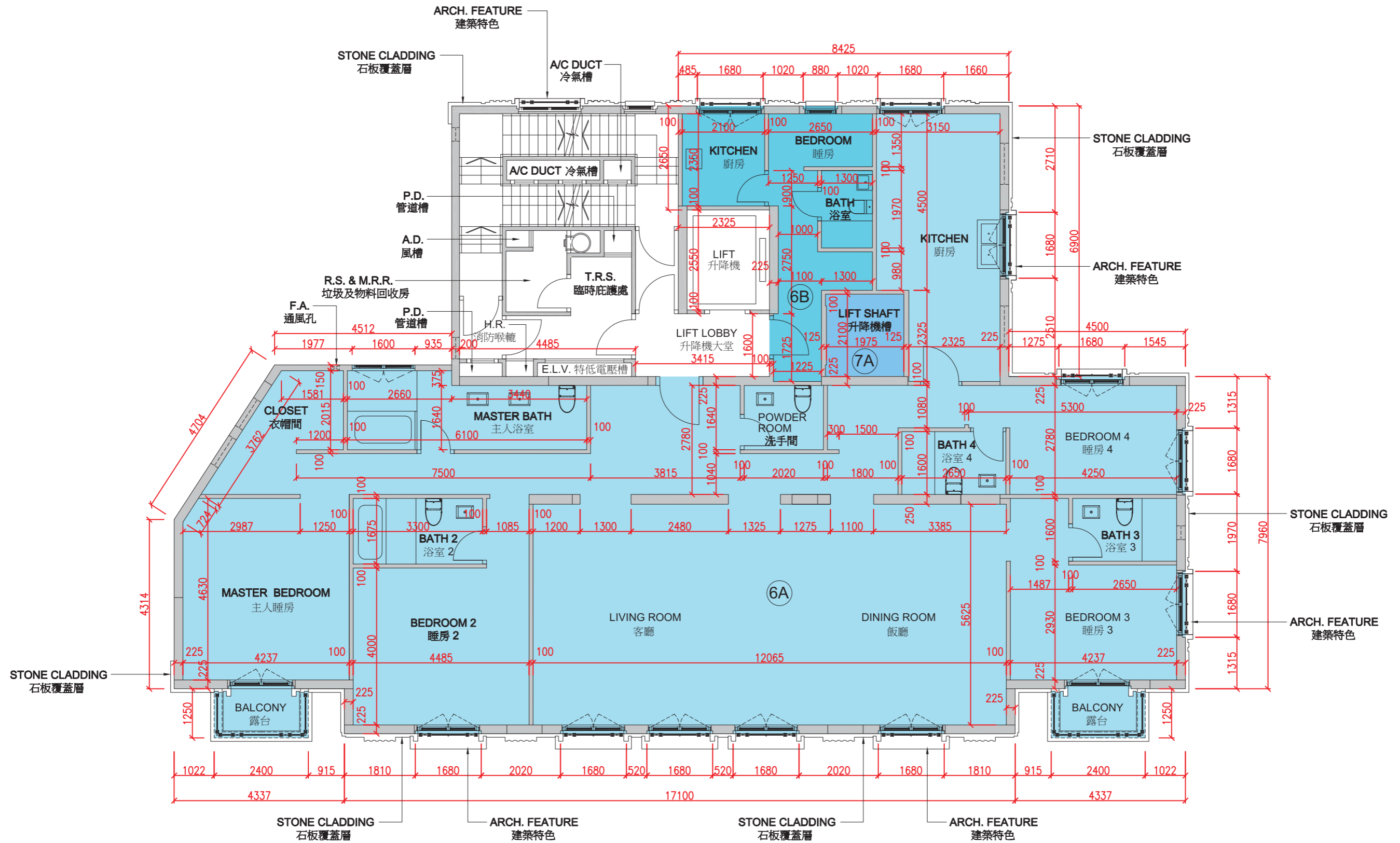
#### 備註：

1. 樓面平面圖之尺規所列數字為以毫米標示之建築結構尺寸。
2. 有關樓面平面圖中顯示之名詞之註釋，請參閱第19頁之圖例。

# FLOOR PLANS OF RESIDENTIAL PROPERTIES IN THE DEVELOPMENT

## 發展項目的住宅物業的樓面平面圖

6/F  
6樓



Scale 比例



**FLOOR PLANS OF RESIDENTIAL PROPERTIES IN THE DEVELOPMENT**  
**發展項目的住宅物業的樓面平面圖**

Description 描述	Floor 樓層	Flat 單位		
		6A	6B	7A
Thickness of Floor Slab (excluding plaster) of each residential property (mm) 每個住宅物業的樓板（不包括灰泥）的厚度（毫米）	6/F 6樓	150,300	150,300	Not Applicable 不適用
The floor-to-floor height (refers to the height between the top surface of the structural slab of a floor and the top surface of the structural slab of its immediate upper floor) of each residential property (mm) 每個住宅物業的層與層之間的高度（指該樓層之石屎地台面與上一層石屎地台面之高度距離）（毫米）		3000, 3025, 3150, 3250, 3500, 3525, 3850, 3975, 4000	3025, 3325, 3500, 3975	Not Applicable 不適用

The internal areas of the residential properties on the upper floors will generally be slightly larger than those on the lower floors because of the reducing thickness of the structural walls on the upper floors.

因住宅物業的較高樓層的結構牆的厚度遞減，較高樓層的內部面積，一般比較低樓層的內部面積稍大。

Notes:

1. The dimensions in the floor plans are all structural dimensions in millimetre.
2. Please refer to page 19 for legends of the abbreviations shown on the floor plan.

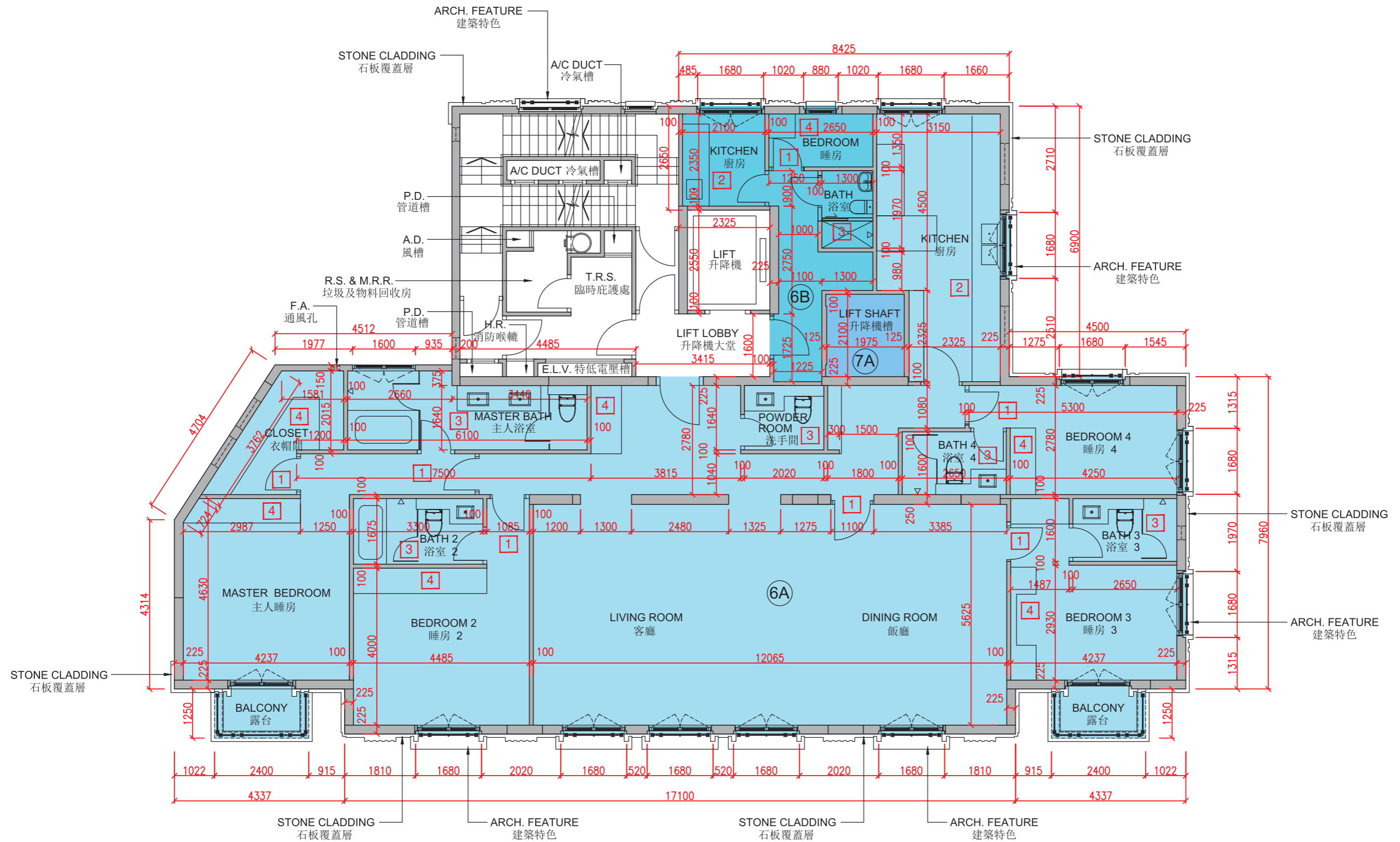
備註：

1. 樓面平面圖之尺規所列數字為以毫米標示之建築結構尺寸。
2. 有關樓面平面圖中顯示之名詞之註釋，請參閱第19頁之圖例。

# FLOOR PLANS OF RESIDENTIAL PROPERTIES IN THE DEVELOPMENT

## 發展項目的住宅物業的樓面平面圖

6/F Showing As-is Layout  
6樓現狀間隔



Scale 比例



## FLOOR PLANS OF RESIDENTIAL PROPERTIES IN THE DEVELOPMENT

### 發展項目的住宅物業的樓面平面圖

#### Notes:

The relevant parts of Flat 6A and Flat 6B respectively have been altered by way of minor works, designated exempted works, or exempted works under the Buildings Ordinance after completion of the Development, the latest condition of which is floor plans showing as-is layout. The alteration works are as follows:

1. Swing door has been installed.
2. Kitchen cabinet has been installed.
3. Design of bathroom and powder room is modified.
4. Cabinet has been installed.

#### 備註：

6A 單位及 6B 單位有關部份分別因在發展項目落成後進行小型工程、指定豁免工程或獲《建築物條例》豁免的工程而有所改動，現狀請參閱有關現狀間隔平面圖。該等改動如下：

1. 安裝掩門。
2. 安裝廚櫃。
3. 修改浴室及洗手間設計。
4. 安裝櫃。

#### Notes:

1. The dimensions in the floor plans are all structural dimensions in millimetre.
2. Please refer to page 19 for legends of the abbreviations shown on the floor plan.

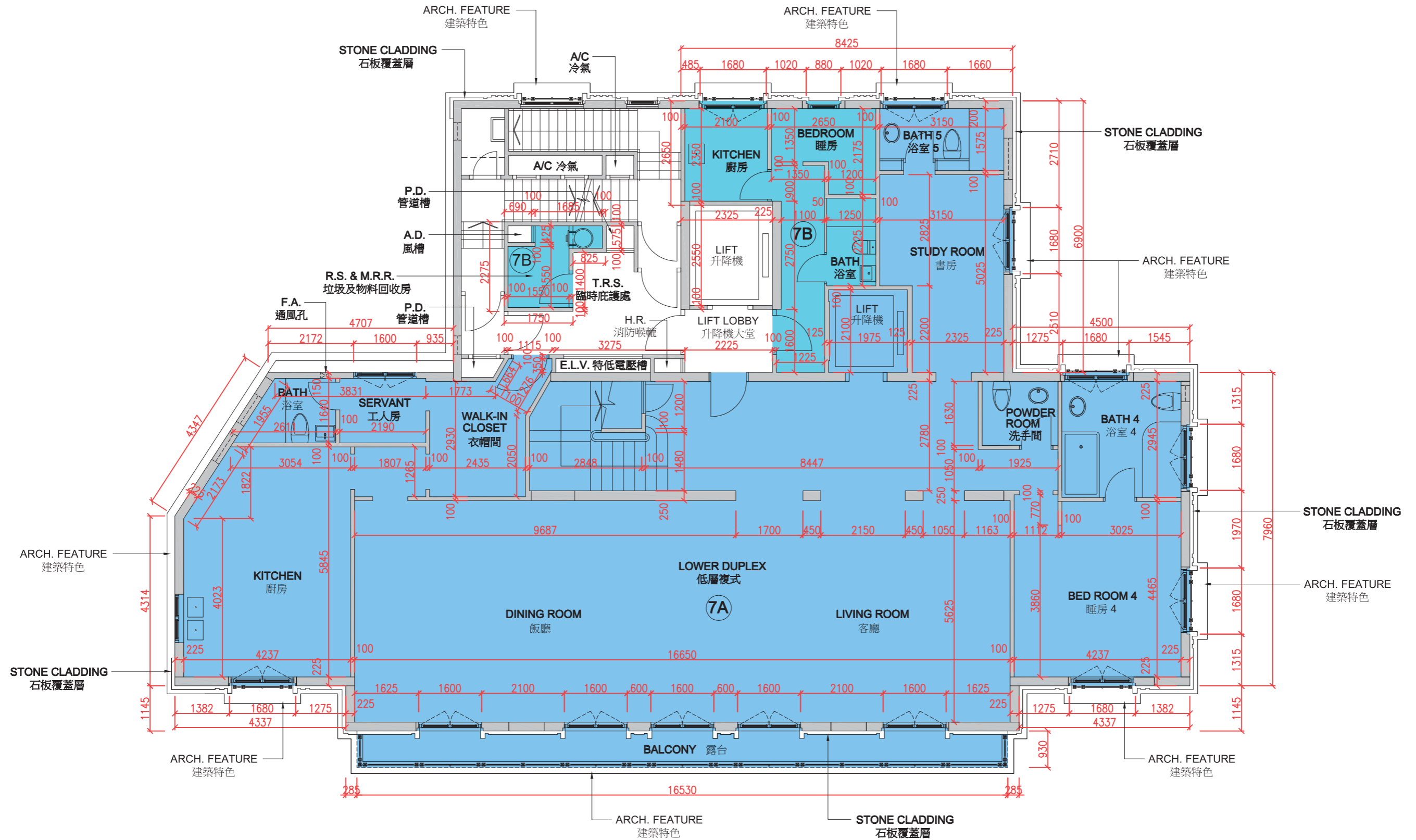
#### 備註：

1. 樓面平面圖之尺規所列數字為以毫米標示之建築結構尺寸。
2. 有關樓面平面圖中顯示之名詞之註釋，請參閱第19頁之圖例。

# FLOOR PLANS OF RESIDENTIAL PROPERTIES IN THE DEVELOPMENT

## 發展項目的住宅物業的樓面平面圖

7/F  
7樓



Scale 比例



**FLOOR PLANS OF RESIDENTIAL PROPERTIES IN THE DEVELOPMENT**  
**發展項目的住宅物業的樓面平面圖**

Description 描述	Floor 樓層	Flat 單位	
		7A	7B
Thickness of Floor Slab (excluding plaster) of each residential property (mm) 每個住宅物業的樓板（不包括灰泥）的厚度（毫米）	7/F 7樓	150, 300	150, 300
The floor-to-floor height (refers to the height between the top surface of the structural slab of a floor and the top surface of the structural slab of its immediate upper floor) of each residential property (mm) 每個住宅物業的層與層之間的高度（指該樓層之石屎地台面與上一層石屎地台面之高度距離）（毫米）		3500, 3850, 3975, 4000	3150, 3500, 3975

The internal areas of the residential properties on the upper floors will generally be slightly larger than those on the lower floors because of the reducing thickness of the structural walls on the upper floors.

因住宅物業的較高樓層的結構牆的厚度遞減，較高樓層的內部面積，一般比較低樓層的內部面積稍大。

Notes:

1. The dimensions in the floor plans are all structural dimensions in millimetre.
2. Please refer to page 19 for legends of the abbreviations shown on the floor plan.

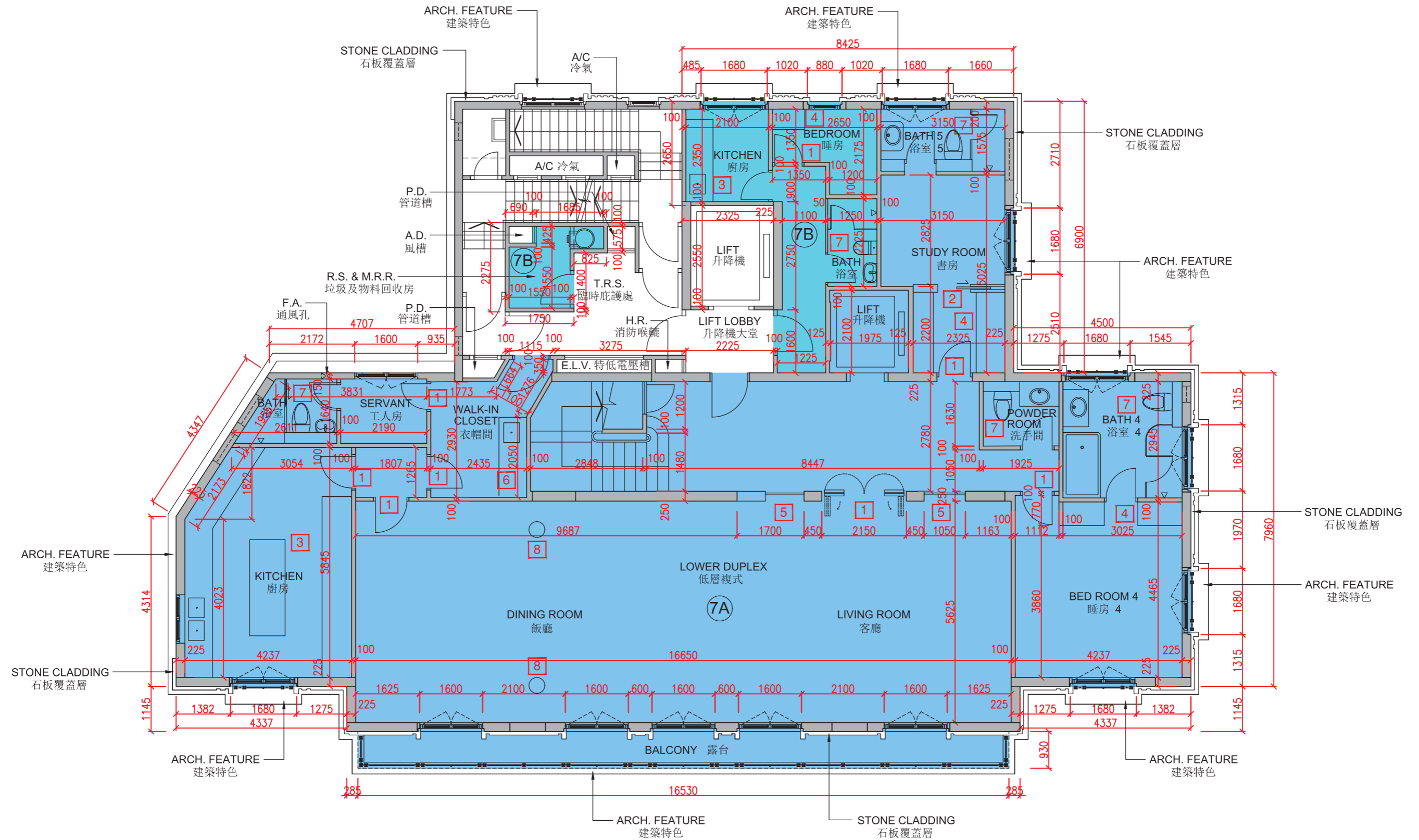
備註：

1. 樓面平面圖之尺規所列數字為以毫米標示之建築結構尺寸。
2. 有關樓面平面圖中顯示之名詞之註釋，請參閱第19頁之圖例。

# FLOOR PLANS OF RESIDENTIAL PROPERTIES IN THE DEVELOPMENT

## 發展項目的住宅物業的樓面平面圖

7/F Showing As-is Layout  
7樓現狀間隔



Scale 比例



## FLOOR PLANS OF RESIDENTIAL PROPERTIES IN THE DEVELOPMENT

### 發展項目的住宅物業的樓面平面圖

#### Notes:

The relevant parts of Flat 7A and Flat 7B respectively have been altered by way of minor works, designated exempted works, or exempted works under the Buildings Ordinance after completion of the Development, the latest condition of which is shown on the floor plans showing as-is layout. The alteration works are as follows:

1. Swing door has been installed.
2. Sliding door has been installed.
3. Kitchen cabinet has been installed.
4. Cabinet has been installed.
5. Partition has been amended.
6. Cabinet and sink unit has been installed.
7. Design of bathroom and powder room is modified.
8. Decorative non-structural column has been installed.

#### 備註：

7A 單位及 7B 單位有關部份分別因在發展項目落成後進行小型工程、指定豁免工程或獲《建築物條例》豁免的工程而有所改動，現狀請參閱有關現狀間隔平面圖。該等改動如下：

1. 安裝掩門。
2. 安裝趟門。
3. 安裝廚櫃。
4. 安裝櫃。
5. 改動間隔。
6. 安裝櫃及洗滌盆。
7. 修改浴室及洗手間設計。
8. 安裝非結構裝飾柱。

#### Notes:

1. The dimensions in the floor plans are all structural dimensions in millimetre.
2. Please refer to page 19 for legends of the abbreviations shown on the floor plan.

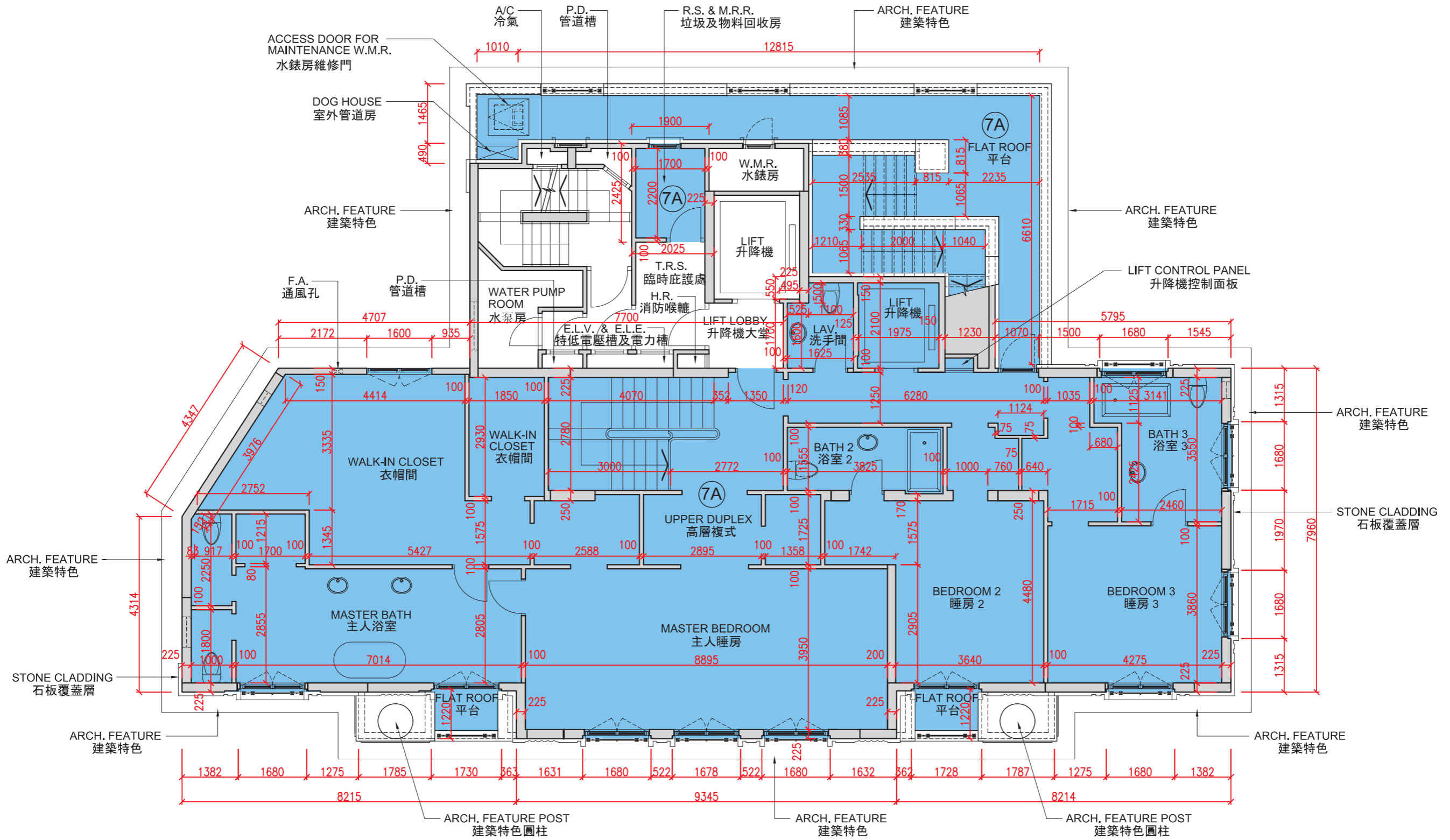
#### 備註：

1. 樓面平面圖之尺規所列數字為以毫米標示之建築結構尺寸。
2. 有關樓面平面圖中顯示之名詞之註釋，請參閱第19頁之圖例。

# FLOOR PLANS OF RESIDENTIAL PROPERTIES IN THE DEVELOPMENT

## 發展項目的住宅物業的樓面平面圖

8/F  
8樓



**FLOOR PLANS OF RESIDENTIAL PROPERTIES IN THE DEVELOPMENT**  
**發展項目的住宅物業的樓面平面圖**

Description 描述	Floor 樓層	Flat 單位
		7A
Thickness of Floor Slab (excluding plaster) of each residential property (mm) 每個住宅物業的樓板（不包括灰泥）的厚度（毫米）	8/F 8樓	150,300
The floor-to-floor height (refers to the height between the top surface of the structural slab of a floor and the top surface of the structural slab of its immediate upper floor) of each residential property (mm) 每個住宅物業的層與層之間的高度（指該樓層之石屎地台面與上一層石屎地台面之高度距離）（毫米）		3500,3850

The internal areas of the residential properties on the upper floors will generally be slightly larger than those on the lower floors because of the reducing thickness of the structural walls on the upper floors.

因住宅物業的較高樓層的結構牆的厚度遞減，較高樓層的內部面積，一般比較低樓層的內部面積稍大。

Notes:

1. The dimensions in the floor plans are all structural dimensions in millimetre.
2. Please refer to page 19 for legends of the abbreviations shown on the floor plan.

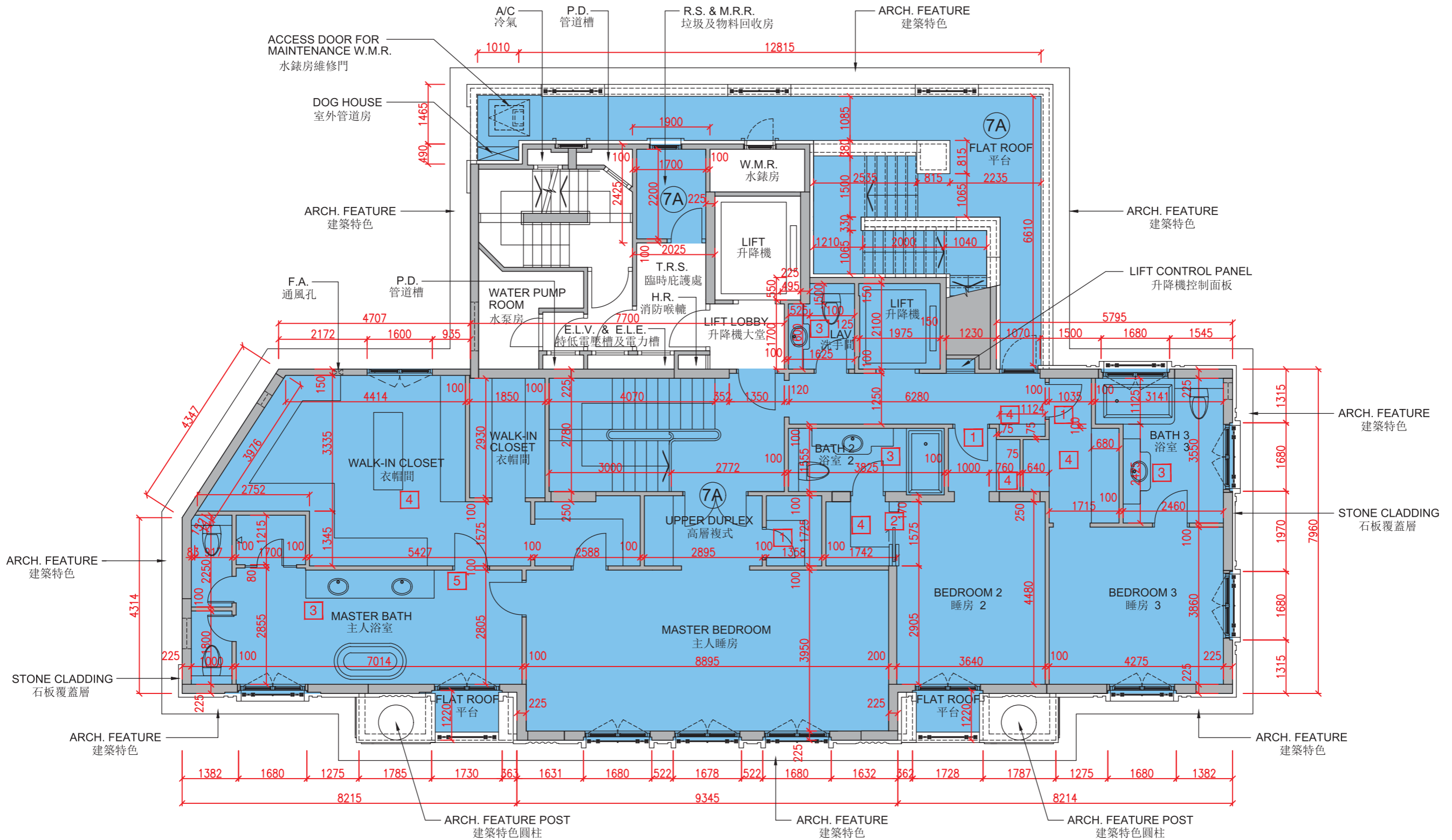
備註：

1. 樓面平面圖之尺規所列數字為以毫米標示之建築結構尺寸。
2. 有關樓面平面圖中顯示之名詞之註釋，請參閱第19頁之圖例。

# FLOOR PLANS OF RESIDENTIAL PROPERTIES IN THE DEVELOPMENT

## 發展項目的住宅物業的樓面平面圖

8/F Showing As-is Layout  
8樓現狀間隔



Scale 比例



## FLOOR PLANS OF RESIDENTIAL PROPERTIES IN THE DEVELOPMENT

### 發展項目的住宅物業的樓面平面圖

#### Notes:

The relevant parts of Flat 7A have been altered by way of minor works, designated exempted works, or exempted works under the Buildings Ordinance after completion of the Development, the latest condition of which is shown on the floor plans showing as-is layout. The alteration works are as follows:

1. Swing door has been installed.
2. Sliding door has been installed.
3. Design of bathroom and lavatory are modified.
4. Cabinet has been installed.
5. Swing door has been altered.

#### 備註：

7A 單位有關部份因在發展項目落成後進行小型工程、指定豁免工程或獲《建築物條例》豁免的工程而有所改動，現狀請參閱有關現狀間隔平面圖。該等改動如下：

1. 安裝掩門。
2. 安裝趟門。
3. 修改浴室及洗手間設計。
4. 安裝櫃。
5. 改動掩門。

#### Notes:

1. The dimensions in the floor plans are all structural dimensions in millimetre.
2. Please refer to page 19 for legends of the abbreviations shown on the floor plan.

#### 備註：

1. 樓面平面圖之尺規所列數字為以毫米標示之建築結構尺寸。
2. 有關樓面平面圖中顯示之名詞之註釋，請參閱第19頁之圖例。



**FLOOR PLANS OF RESIDENTIAL PROPERTIES IN THE DEVELOPMENT**  
**發展項目的住宅物業的樓面平面圖**

Description 描述	Floor 樓層	Flat 單位
		7A
Thickness of Floor Slab (excluding plaster) of each residential property (mm) 每個住宅物業的樓板（不包括灰泥）的厚度（毫米）	Roof 天台	150,300
The floor-to-floor height (refers to the height between the top surface of the structural slab of a floor and the top surface of the structural slab of its immediate upper floor) of each residential property (mm) 每個住宅物業的層與層之間的高度（指該樓層之石屎地台面與上一層石屎地台面之高度距離）（毫米）		Not Applicable 不適用

The internal areas of the residential properties on the upper floors will generally be slightly larger than those on the lower floors because of the reducing thickness of the structural walls on the upper floors.

因住宅物業的較高樓層的結構牆的厚度遞減，較高樓層的內部面積，一般比較低樓層的內部面積稍大。

Notes:

1. The dimensions in the floor plans are all structural dimensions in millimetre.
2. Please refer to page 19 for legends of the abbreviations shown on the floor plan.

備註：

1. 樓面平面圖之尺規所列數字為以毫米標示之建築結構尺寸。
2. 有關樓面平面圖中顯示之名詞之註釋，請參閱第19頁之圖例。