

AERIAL PHOTOGRAPH OF THE DEVELOPMENT

發展項目的鳥瞰照片



This blank area falls outside the coverage of the aerial photograph
鳥瞰照片並不覆蓋本空白範圍



Adopted from part of the aerial photograph taken by the Survey and Mapping Office of the Lands Department at a flying height of 2,500 feet in Repulse Bay, photo no. E247284C, dated 5 January 2025.

摘錄自地政總署測繪處於2025年1月5日在淺水灣2,500呎飛行高度拍攝之鳥瞰照片，照片編號為E247284C。

● Location of the Development
發展項目的位置

Notes:

1. Due to technical reasons, this aerial photograph has shown more than the area required under the Residential Properties (First-hand Sales) Ordinance.
2. The Vendor advises prospective purchasers to conduct an on-site visit for a better understanding of the development site, its surrounding environment and the public facilities nearby.
3. Copy of the aerial photograph of the Development is available for free inspection at the sales office during opening hours.

備註：

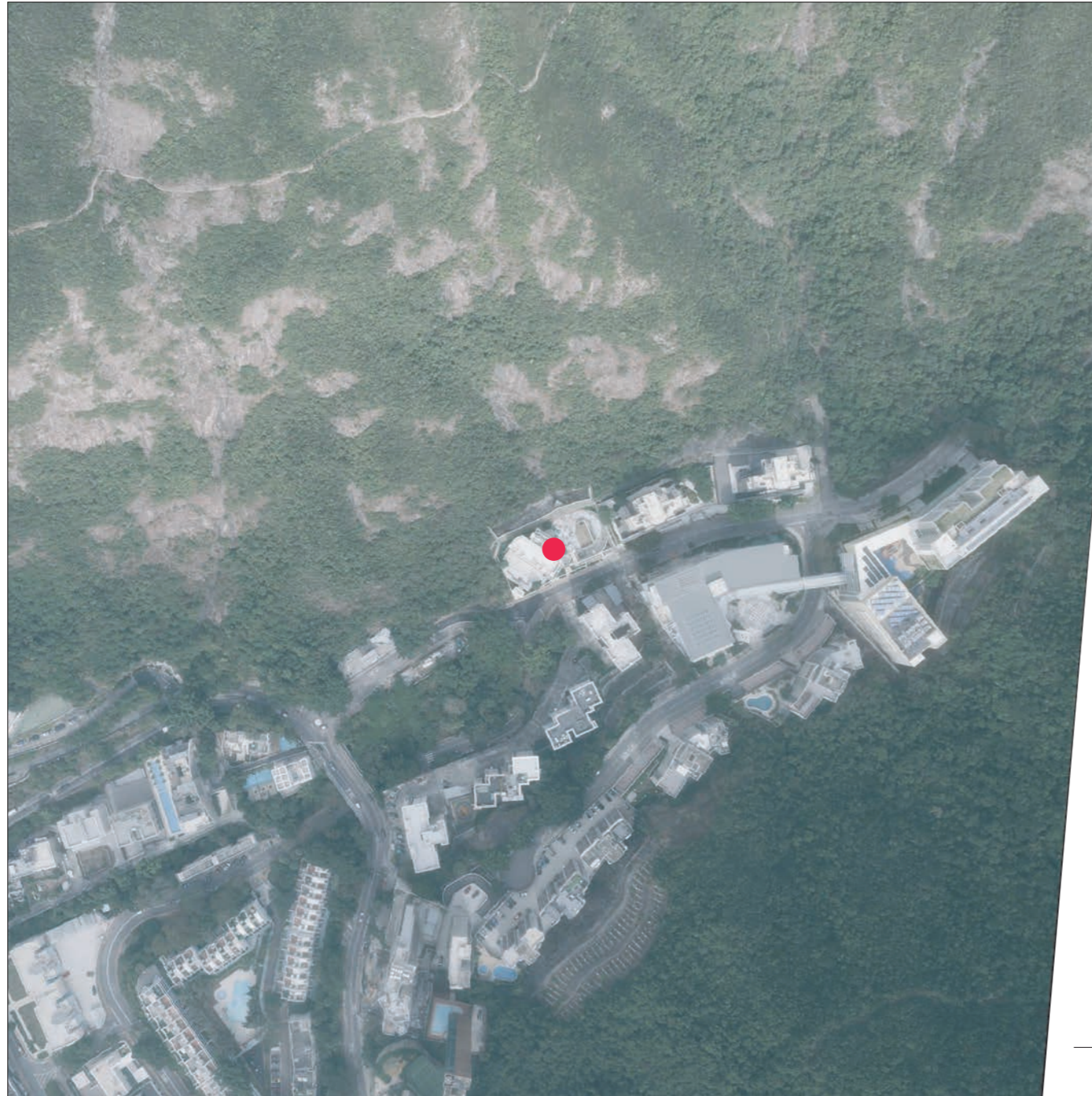
1. 因技術性問題，此鳥瞰照片所顯示的範圍超過《一手住宅物業銷售條例》所規定的範圍。
2. 賣方建議準買家到有關發展地盤作實地考察，以對該發展地盤、其周邊地區環境及附近的公共設施有較佳了解。
3. 發展項目的鳥瞰照片之副本可於售樓處開放時間內免費查閱。

Survey and Mapping Office, Lands Department, The Government of HKSAR © Copyright reserved – reproduction by permission only.

香港特別行政區政府地政總署測繪處版權所有，未經許可，不得複製。

AERIAL PHOTOGRAPH OF THE DEVELOPMENT

發展項目的鳥瞰照片



Adopted from part of the aerial photograph taken by the Survey and Mapping Office of the Lands Department at a flying height of 2,500 feet in Repulse Bay, photo no. E247285C, dated 5 January 2025.

摘錄自地政總署測繪處於2025年1月5日在淺水灣2,500呎飛行高度拍攝之鳥瞰照片，照片編號為E247285C。

This blank area falls outside the coverage of the aerial photograph
鳥瞰照片並不覆蓋本空白範圍

● Location of the Development
發展項目的位置

Notes:

1. Due to technical reasons, this aerial photograph has shown more than the area required under the Residential Properties (First-hand Sales) Ordinance.
2. The Vendor advises prospective purchasers to conduct an on-site visit for a better understanding of the development site, its surrounding environment and the public facilities nearby.
3. Copy of the aerial photograph of the Development is available for free inspection at the sales office during opening hours.

備註：

1. 因技術性問題，此鳥瞰照片所顯示的範圍超過《一手住宅物業銷售條例》所規定的範圍。
2. 賣方建議準買家到有關發展地盤作實地考察，以對該發展地盤、其周邊地區環境及附近的公共設施有較佳了解。
3. 發展項目的鳥瞰照片之副本可於售樓處開放時間內免費查閱。

Survey and Mapping Office, Lands Department, The Government of HKSAR © Copyright reserved – reproduction by permission only.

香港特別行政區政府地政總署測繪處版權所有，未經許可，不得複製。