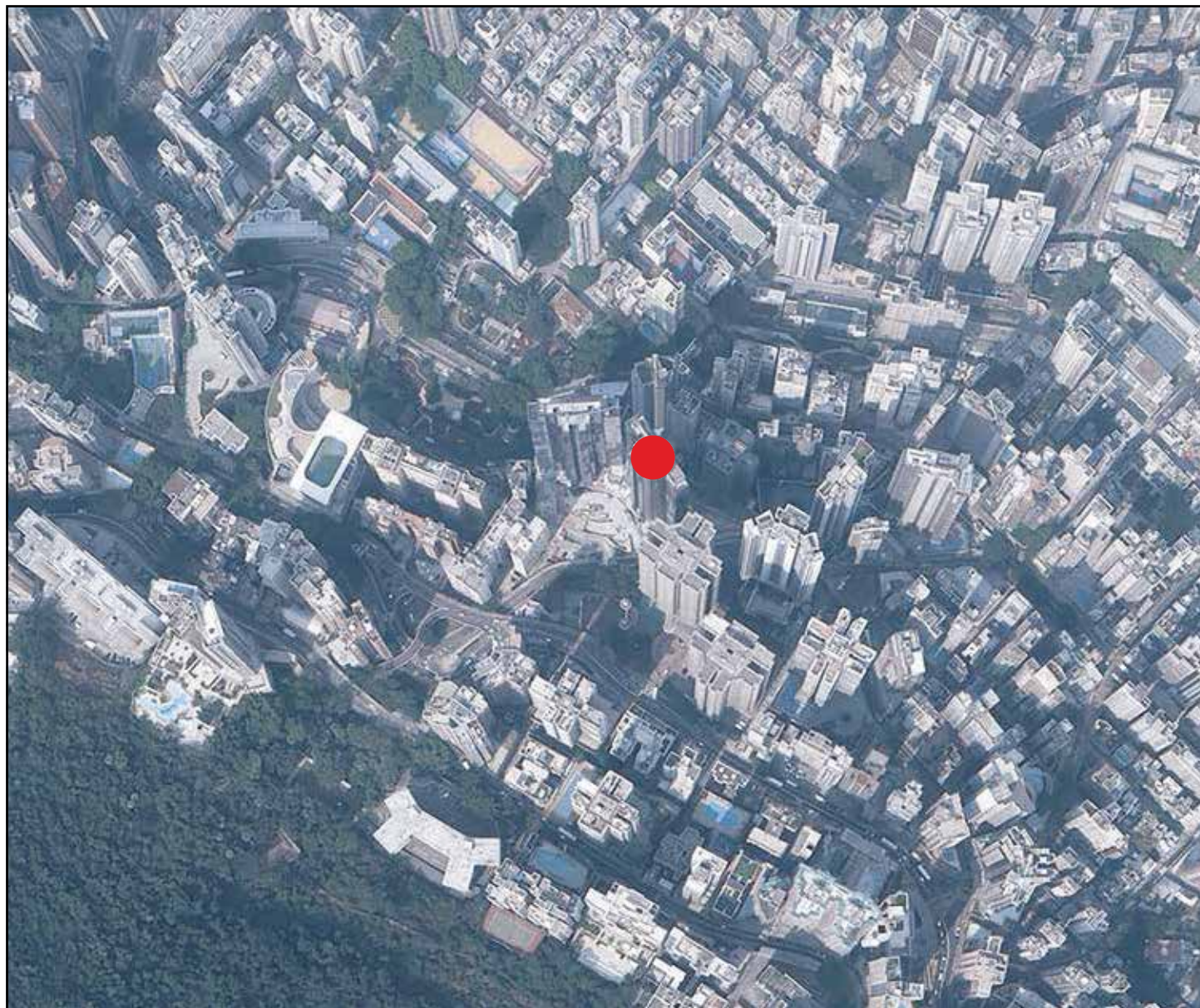



7 期數的鳥瞰照片 AERIAL PHOTOGRAPH OF THE PHASE



摘錄自地政總署測繪處於2024年3月8日在中環6,000呎飛行高度拍攝之鳥瞰照片，編號為E219016C。

Adopted from part of the aerial photograph taken by the Survey and Mapping Office of Lands Department at a flying height of 6,000 feet in Central. Photo No. E219016C, dated 8th March 2024.

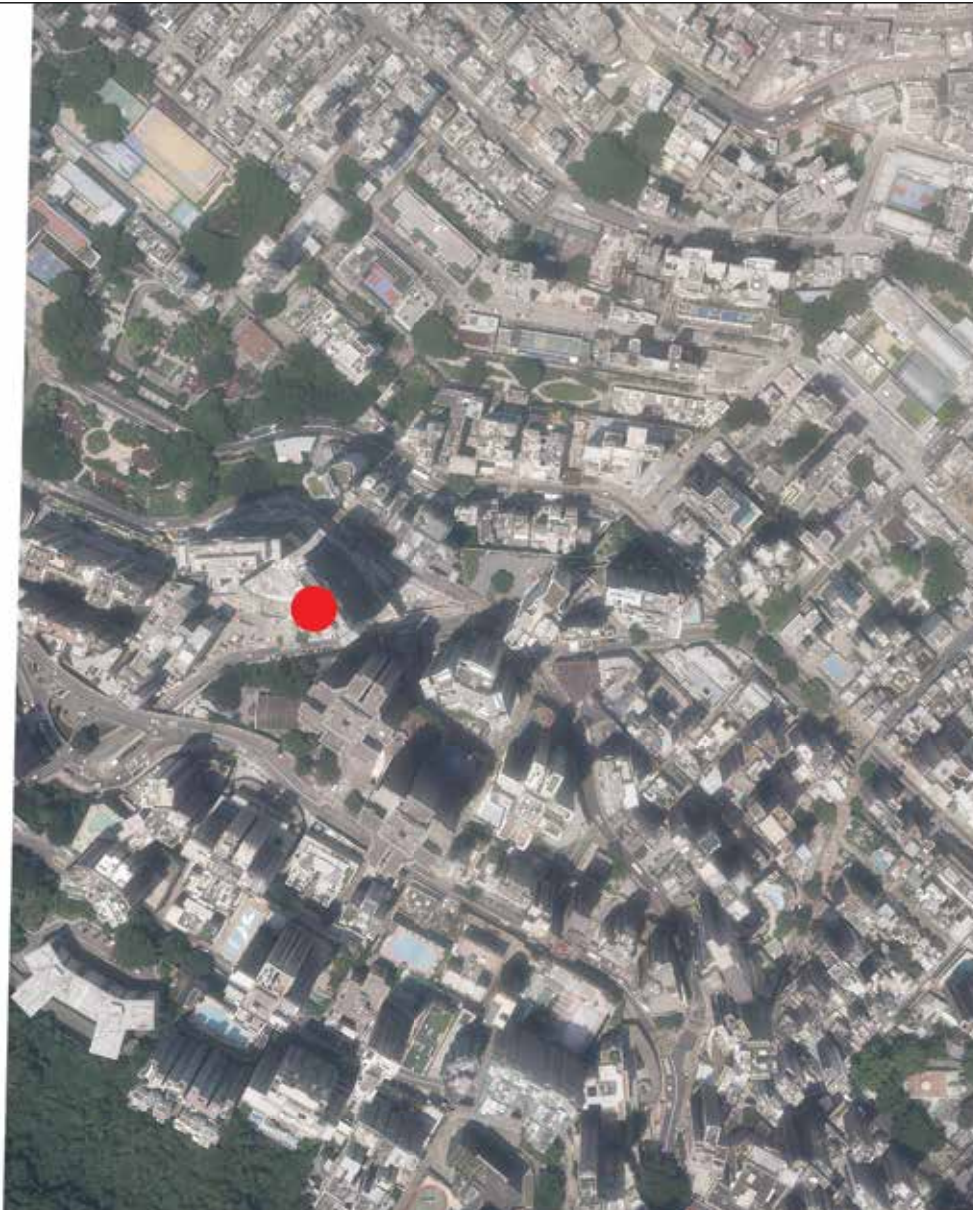
香港特別行政區政府地政總署測繪處 © 版權所有，未經許可，不得複製。
Survey and Mapping Office, Lands Department, The Government of HKSAR © Copyright reserved – reproduction by permission only.

 期數的位置
Location of the Phase

備註：因技術性問題，此鳥瞰照片所顯示的範圍超過《一手住宅物業銷售條例》的規定。
Note: Due to technical reasons, this aerial photograph has shown more than the area required under the Residential Properties (First-hand Sales) Ordinance.

7 期數的鳥瞰照片 AERIAL PHOTOGRAPH OF THE PHASE

鳥瞰照片並不覆蓋空白範圍
This blank area falls outside the coverage of the aerial photograph.



摘錄自地政總署測繪處於2024年8月7日在上環6,000呎飛行高度拍攝之鳥瞰照片，編號為E225604C。

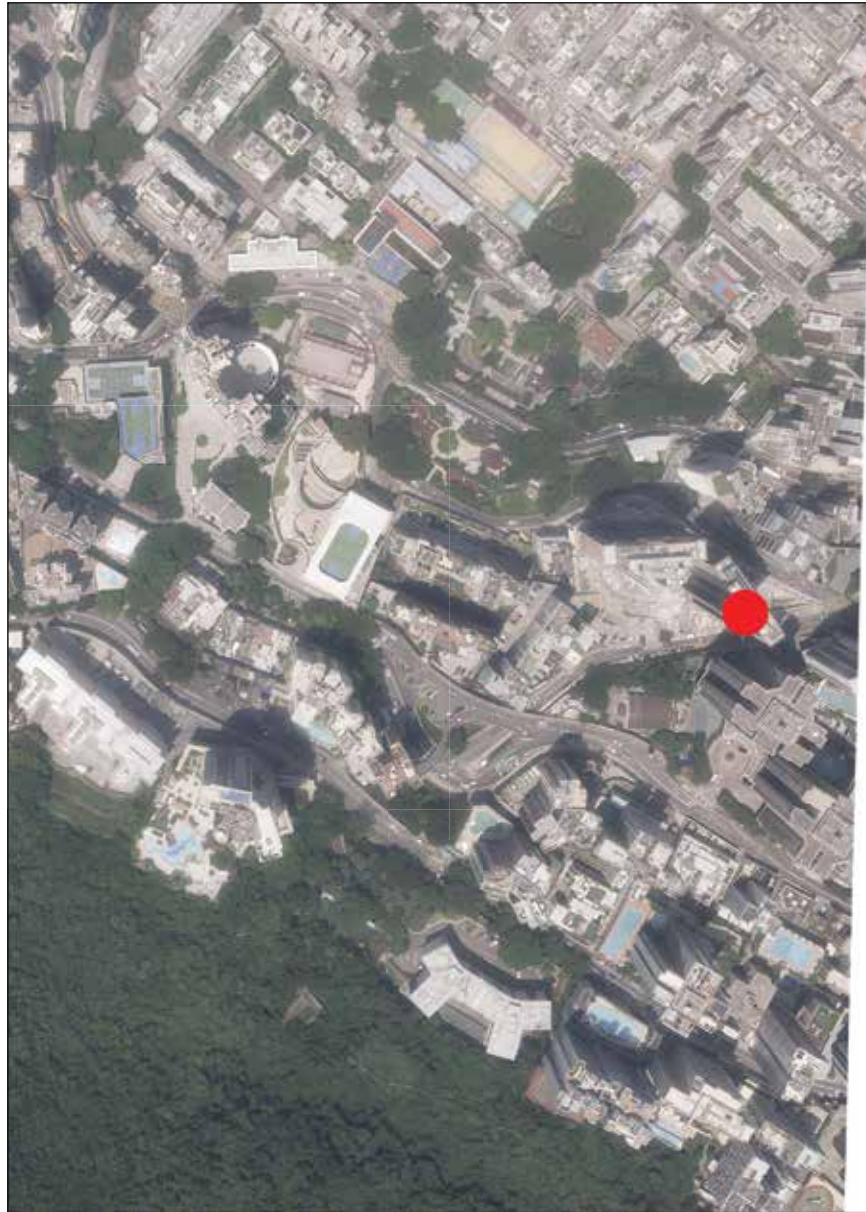
Adopted from part of the aerial photograph taken by the Survey and Mapping Office of Lands Department at a flying height of 6,000 feet in Sheung Wan. Photo No. E225604C, dated 7th August 2024.

香港特別行政區政府地政總署測繪處 © 版權所有，未經許可，不得複製。
Survey and Mapping Office, Lands Department, The Government of HKSAR © Copyright reserved – reproduction by permission only.

● 期數的位置
Location of the Phase

備註：因技術性問題，此鳥瞰照片所顯示的範圍超過《一手住宅物業銷售條例》的規定。
Note: Due to technical reasons, this aerial photograph has shown more than the area required under the Residential Properties (First-hand Sales) Ordinance.

7 期數的鳥瞰照片 AERIAL PHOTOGRAPH OF THE PHASE



鳥瞰照片並不覆蓋本空白範圍
This blank area falls outside the coverage of the aerial photograph.

摘錄自地政總署測繪處於2024年8月7日在半山區6,000呎飛行高度拍攝之鳥瞰照片，編號為E225606C。
Adopted from part of the aerial photograph taken by the Survey and Mapping Office of Lands Department at a flying height of 6,000 feet in Mid-Levels. Photo No. E225606C, dated 7th August 2024.

香港特別行政區政府地政總署測繪處 © 版權所有，未經許可，不得複製。
Survey and Mapping Office, Lands Department, The Government of HKSAR © Copyright reserved – reproduction by permission only.

● 期數的位置
Location of the Phase

備註：因技術性問題，此鳥瞰照片所顯示的範圍超過《一手住宅物業銷售條例》的規定。
Note: Due to technical reasons, this aerial photograph has shown more than the area required under the Residential Properties (First-hand Sales) Ordinance.