

11 FLOOR PLANS OF RESIDENTIAL PROPERTIES IN THE DEVELOPMENT

發展項目的住宅物業的樓面平面圖

Legend of the Terms and Abbreviations for Floor Plan 樓面平面圖之名稱和簡稱

A/C PLATFORM	= 冷氣機平台 AIR-CONDITIONER PLATFORM	L/M RM.	= 機房
B.R.1	= 睡房 1 BEDROOM 1	LAUNDRY	= 洗衣房 LAUNDRY ROOM
B.R.2	= 睡房 2 BEDROOM 2	LAV.	= 廁所 LAVATORY
B.R.3	= 睡房 3 BEDROOM 3	LIFT	= 升降機
B.W.	= 窗台 BAY WINDOW	LIV.	= 客廳 LIVING ROOM
BAL.	= 露台 BALCONY	LIV. & DIN.	= 客飯廳 LIVING & DINING ROOM
BATH	= 浴室 BATHROOM	M.B.R.	= 主人睡房 MASTER BEDROOM
CANOPY	= 有蓋空間	OPEN AREA	= 開放空間
CARPARK	= 停車場	P.T.	= 花槽 PLANTER
DIN.	= 飯廳 DINING ROOM	PANTRY	= 茶水間
DN	= 落 DOWN	POOL	= 游泳池
ELEC. METER RM.	= 電錶房 ELECTRIC METER ROOM	STO. RM.	= 工作空 STUDIO ROOM
FAMILY	= 家庭房 FAMILY ROOM	STORE	= 儲物室
FAMILY RM.	= 家庭房 FAMILY ROOM	STUDY ROOM	= 書房
FAMILY ROOM	= 家庭房	TOILET	= 廁所
FILTRATION PLANT ROOM	= 濾水機房	U.P.	= 工作平台 UTILITY PLATFORM
FLAT ROOF	= 平台	UP	= 上
GARDEN TERRANCING	= 花園	UPPER ROOF	= 上層天台
GUEST / STUDY RM.	= 客房 / 書房 GUEST / STUDY ROOM	UPPER ROOF (FLAT ROOF)	= 上層天台 (平台)
GUEST ROOM	= 客房	UTILITY RM.	= 工作房 UTILITY ROOM
KIT	= 廚房 KITCHEN	W.C.	= 廁所 WATER CLOSET

Notes:

1. Common pipes exposed or enclosed in cladding may be located at the balcony, flat roof, roof or external wall of some residential flats.
2. There may be sunken slabs at some parts of the ceiling inside some residential flats for the installation of mechanical and electrical services of the floor above or due to the structural, architectural and/or decoration design requirements of the floor above.
3. There may be ceiling bulkheads or false ceiling inside some residential flats for the installation of air-conditioning conduits and/or other mechanical and electrical services.
4. The dimensions of the floor plans are all structural dimensions in millimeter.
5. Those icons of fittings and fixtures shown on the floor plans of residential properties like bathtubs, wash basins, water closets, sink units etc. are prepared in accordance with the latest approved building plans. Their shapes, dimensions, scales may be differed from the fittings and fixtures actually provided and they are for indication and reference only.

備註:

1. 部分住宅單位的露台、平台、天台或外牆或設有外露之公用喉管，或外牆裝飾板內藏之公用喉管。
2. 部分住宅單位內之部分天花或有跌級樓板，用以安裝上層之機電設備或配合上層之結構、建築設計及/或裝修設計上的需要。
3. 部分住宅單位內或設有假陣或假天花用以安裝冷氣喉管及/或其他機電設備。
4. 平面圖所列之數字以毫米標示之建築結構尺寸。
5. 各住宅物業的樓面平面圖內所展示之裝置及設備的圖標如浴缸、洗面盆、座廁、洗滌盆、櫃(如有)等乃根據最新經批准的建築圖則擬備，其形狀、尺寸、比例或與實際提供的裝置及設備存在差異，僅供示意及參考之用。

11 FLOOR PLANS OF RESIDENTIAL PROPERTIES IN THE DEVELOPMENT

發展項目的住宅物業的樓面平面圖

HOUSE A 洋房A

Floor 樓層	Floor-to-floor height (i.e. the height between the top surface of the structural slab of a floor and the top surface of the structural slab of its immediate upper floor) of each residential property (mm) 每個住宅物業的層與層之間的高度 (指該樓層之石屎地台面與上一層石屎地台面之高度距離) (毫米)	The thickness of the floor slabs (excluding plaster) of each residential property (mm) 每個住宅物業的樓板 (不包括灰泥) 的厚度 (毫米)
G/F 地下	5125	125 / 150 / 175 / 200
P/F 平台層	4500	150 / 200
1/F 1樓	3500	150
2/F 2樓	4450	150
L/M RM. 機房	2550	150
Roof 天台	-	150

The internal areas of the residential properties on the upper floors will generally be slightly larger than those on the lower floors because of the reducing thickness of the structural walls on the upper floors.
因住宅物業的較高樓層的結構牆的厚度遞減，較高樓層的內部面積，一般比較低樓層的內部面積稍大。

Notes:

- The dimensions in floor plans are all structural dimensions in millimetre.
- Please refer to Page 17 of this sales brochure for remarks and legend of the terms and abbreviations shown on the floor plans.

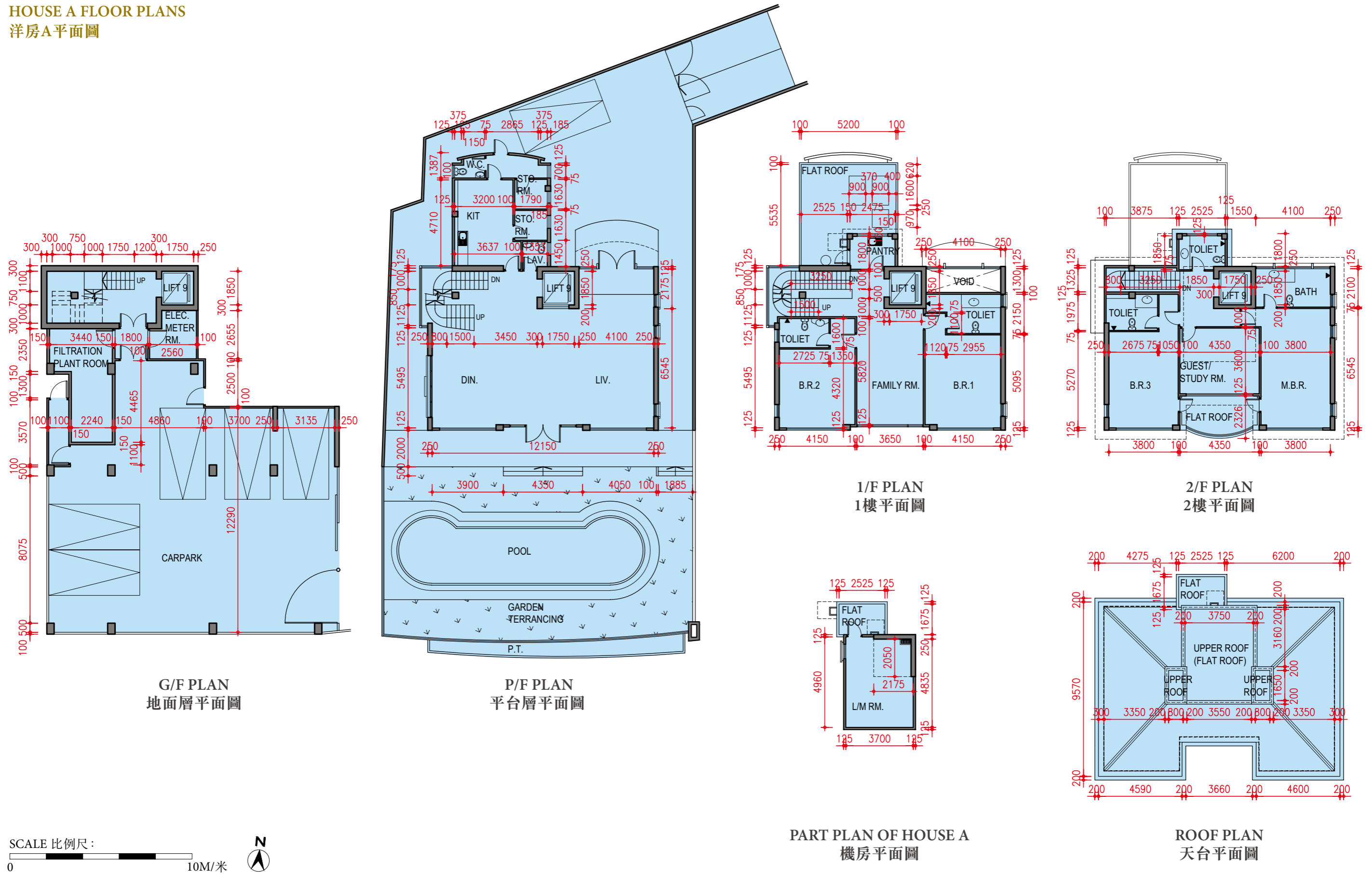
備註：

- 樓層平面圖所列之尺寸數字為以毫米標示之建築結構尺寸。
- 請參閱本售樓說明書第17頁關於本樓面平面圖上顯示的名詞及簡稱之附註及圖例。

11 FLOOR PLANS OF RESIDENTIAL PROPERTIES IN THE DEVELOPMENT

發展項目的住宅物業的樓面平面圖

HOUSE A FLOOR PLANS 洋房A平面圖



11 FLOOR PLANS OF RESIDENTIAL PROPERTIES IN THE DEVELOPMENT

發展項目的住宅物業的樓面平面圖

HOUSE B

洋房B

Floor 樓層	Floor-to-floor height (i.e. the height between the top surface of the structural slab of a floor and the top surface of the structural slab of its immediate upper floor) of each residential property (mm) 每個住宅物業的層與層之間的高度 (指該樓層之石屎地台面與上一層石屎地台面之高度距離) (毫米)	The thickness of the floor slabs (excluding plaster) of each residential property (mm) 每個住宅物業的樓板 (不包括灰泥) 的厚度 (毫米)
G/F 地下	4700	125 / 150 / 175 / 200
P/F 平台層	3700	150 / 200
1/F 1樓	3200	150
2/F 2樓	4950	150
Roof 天台	-	150

The internal areas of the residential properties on the upper floors will generally be slightly larger than those on the lower floors because of the reducing thickness of the structural walls on the upper floors.
因住宅物業的較高樓層的結構牆的厚度遞減，較高樓層的內部面積，一般比較低樓層的內部面積稍大。

Notes:

1. The dimensions in floor plans are all structural dimensions in millimetre.
2. Please refer to Page 17 of this sales brochure for remarks and legend of the terms and abbreviations shown on the floor plans.

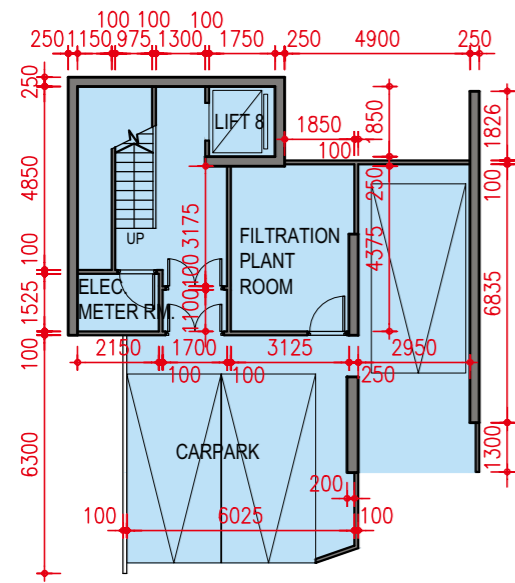
備註：

1. 樓層平面圖所列之尺寸數字為以毫米標示之建築結構尺寸。
2. 請參閱本售樓說明書第17頁關於本樓面平面圖上顯示的名詞及簡稱之附註及圖例。

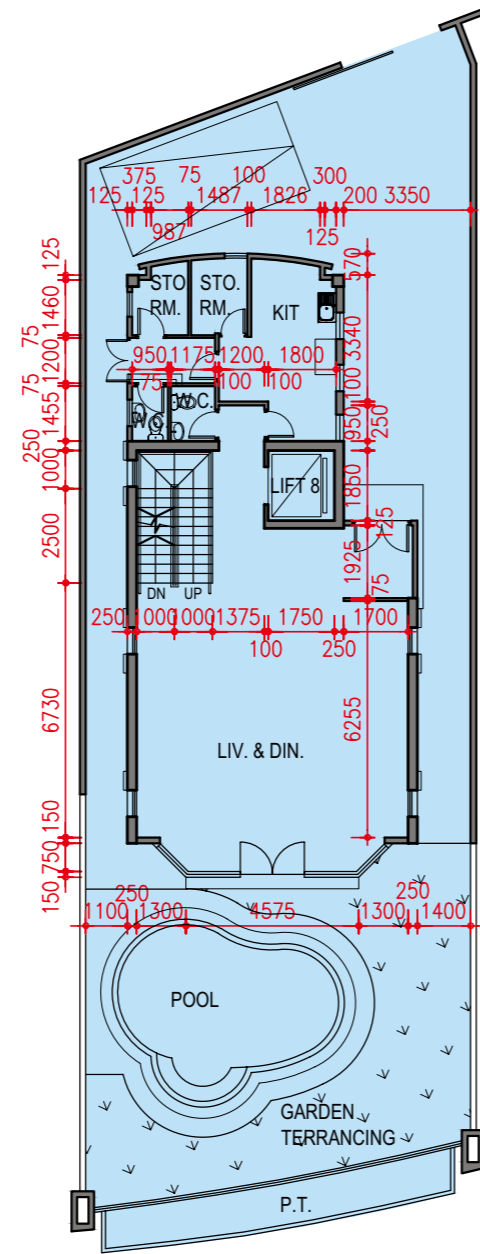
11 FLOOR PLANS OF RESIDENTIAL PROPERTIES IN THE DEVELOPMENT

發展項目的住宅物業的樓面平面圖

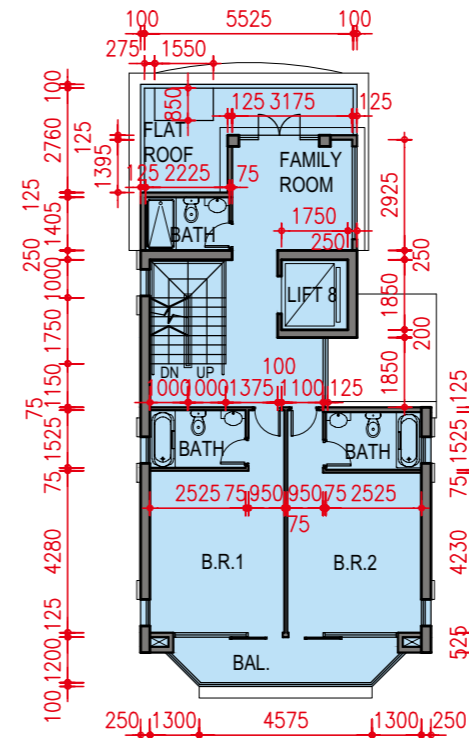
HOUSE B FLOOR PLANS 洋房B平面圖



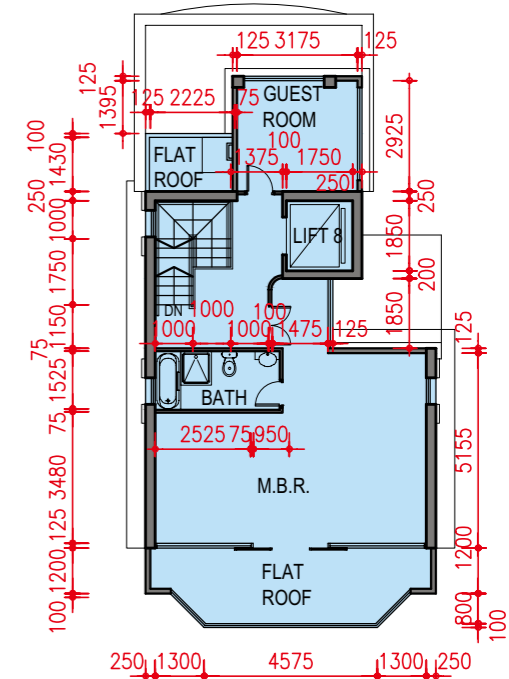
G/F PLAN
地面層平面圖



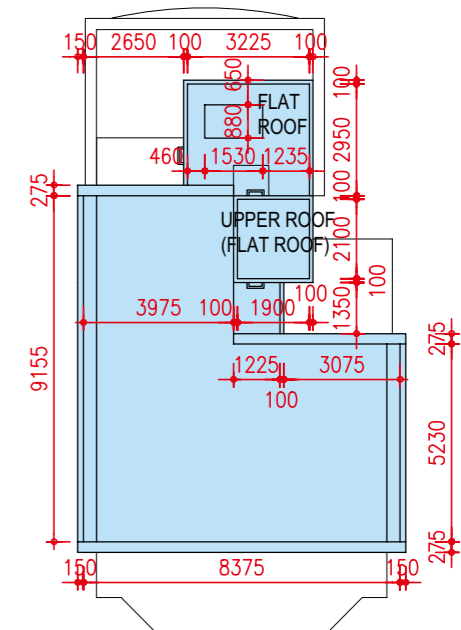
P/F PLAN
平台層平面圖



1/F PLAN
1樓平面圖



2/F PLAN
2樓平面圖



ROOF PLAN
天台平面圖

SCALE 比例尺:
0 10M/米



11 FLOOR PLANS OF RESIDENTIAL PROPERTIES IN THE DEVELOPMENT

發展項目的住宅物業的樓面平面圖

HOUSE C 洋房C

Floor 樓層	Floor-to-floor height (i.e. the height between the top surface of the structural slab of a floor and the top surface of the structural slab of its immediate upper floor) of each residential property (mm) 每個住宅物業的層與層之間的高度 (指該樓層之石屎地台面與上一層石屎地台面之高度距離) (毫米)	The thickness of the floor slabs (excluding plaster) of each residential property (mm) 每個住宅物業的樓板 (不包括灰泥) 的厚度 (毫米)
G/F 地下	4700	125 / 150 / 175 / 200
P/F 平台層	3700	150 / 200
1/F 1樓	3200	150
2/F 2樓	4950	150
Roof 天台	-	150

The internal areas of the residential properties on the upper floors will generally be slightly larger than those on the lower floors because of the reducing thickness of the structural walls on the upper floors.
因住宅物業的較高樓層的結構牆的厚度遞減，較高樓層的內部面積，一般比較低樓層的內部面積稍大。

Notes:

- The dimensions in floor plans are all structural dimensions in millimetre.
- Please refer to Page 17 of this sales brochure for remarks and legend of the terms and abbreviations shown on the floor plans.

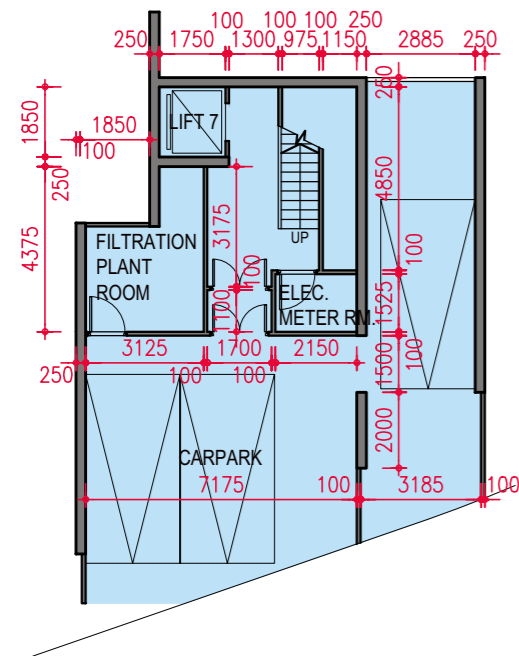
備註：

- 樓層平面圖所列之尺寸數字為以毫米標示之建築結構尺寸。
- 請參閱本售樓說明書第17頁關於本樓面平面圖上顯示的名詞及簡稱之附註及圖例。

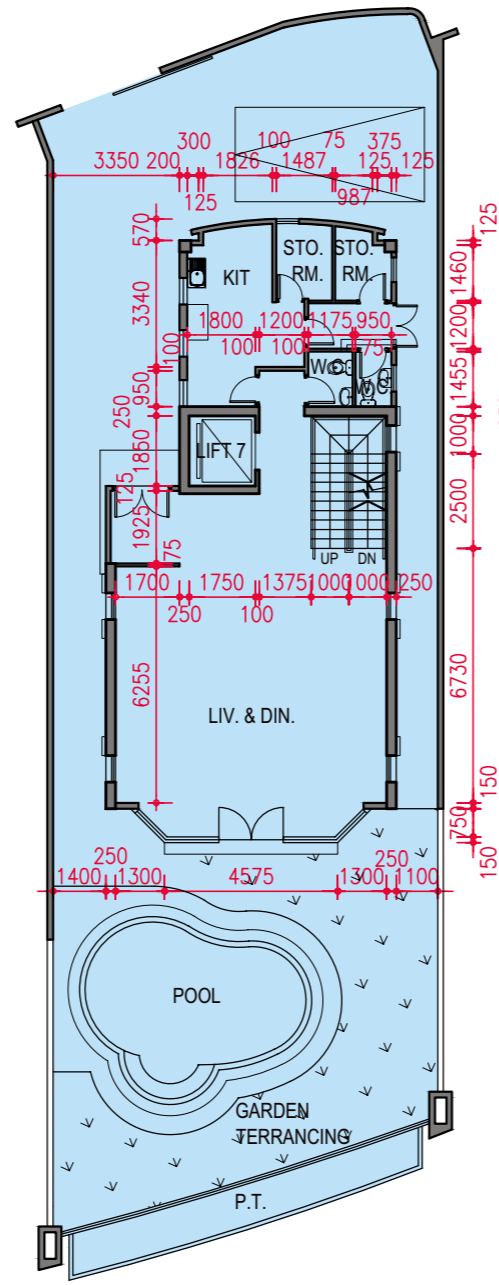
11 FLOOR PLANS OF RESIDENTIAL PROPERTIES IN THE DEVELOPMENT

發展項目的住宅物業的樓面平面圖

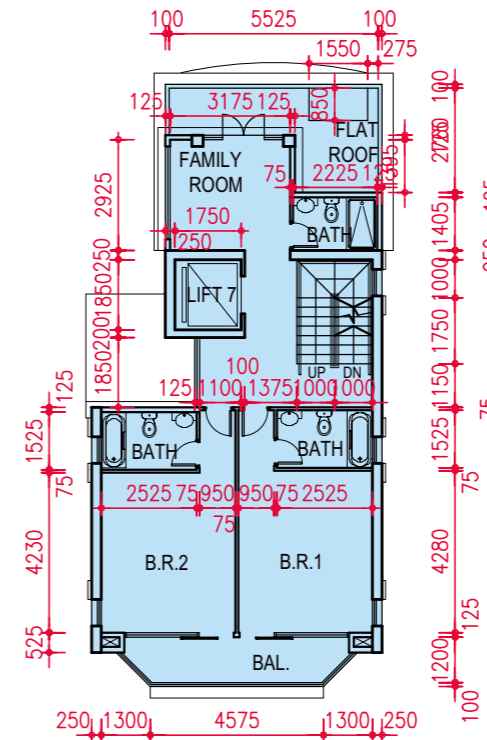
HOUSE C FLOOR PLANS 洋房C平面圖



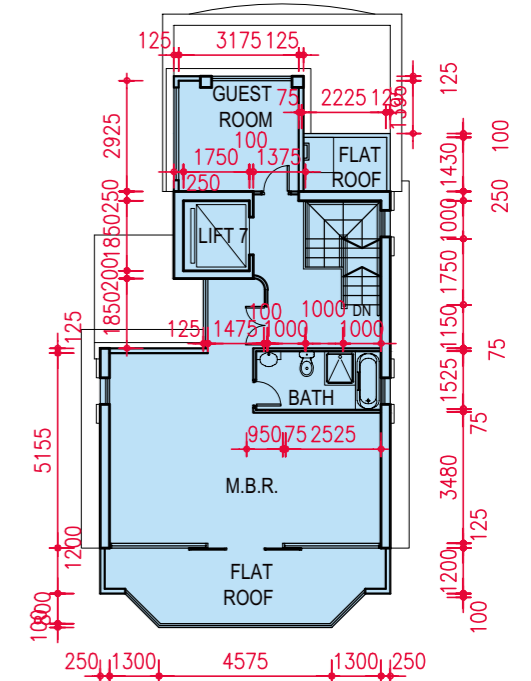
G/F PLAN
地面層平面圖



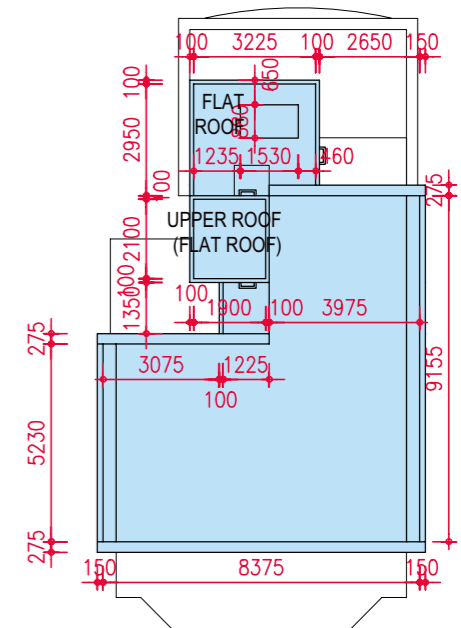
P/F PLAN
平台層平面圖



1/F PLAN
1樓平面圖



2/F PLAN
2樓平面圖



ROOF PLAN
天台平面圖

SCALE 比例尺:
0 10M/米



11 FLOOR PLANS OF RESIDENTIAL PROPERTIES IN THE DEVELOPMENT

發展項目的住宅物業的樓面平面圖

HOUSE D

洋房D

Floor 樓層	Floor-to-floor height (i.e. the height between the top surface of the structural slab of a floor and the top surface of the structural slab of its immediate upper floor) of each residential property (mm) 每個住宅物業的層與層之間的高度 (指該樓層之石屎地台面與上一層石屎地台面之高度距離) (毫米)	The thickness of the floor slabs (excluding plaster) of each residential property (mm) 每個住宅物業的樓板 (不包括灰泥) 的厚度 (毫米)
G/F 地下	4700	125 / 175 / 200
P/F 平台層	4500	150 / 200
1/F 1樓	3500	150
2/F 2樓	4800	150
Roof 天台	-	150

The internal areas of the residential properties on the upper floors will generally be slightly larger than those on the lower floors because of the reducing thickness of the structural walls on the upper floors.
因住宅物業的較高樓層的結構牆的厚度遞減，較高樓層的內部面積，一般比較低樓層的內部面積稍大。

Notes:

- The dimensions in floor plans are all structural dimensions in millimetre.
- Please refer to Page 17 of this sales brochure for remarks and legend of the terms and abbreviations shown on the floor plans.

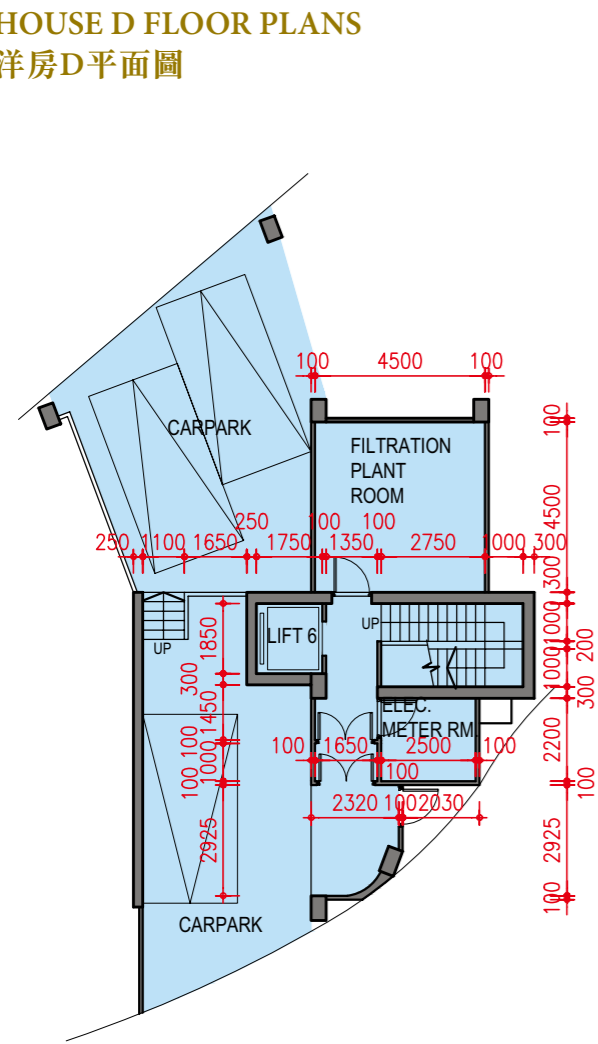
備註：

- 樓層平面圖所列之尺寸數字為以毫米標示之建築結構尺寸。
- 請參閱本售樓說明書第17頁關於本樓面平面圖上顯示的名詞及簡稱之附註及圖例。

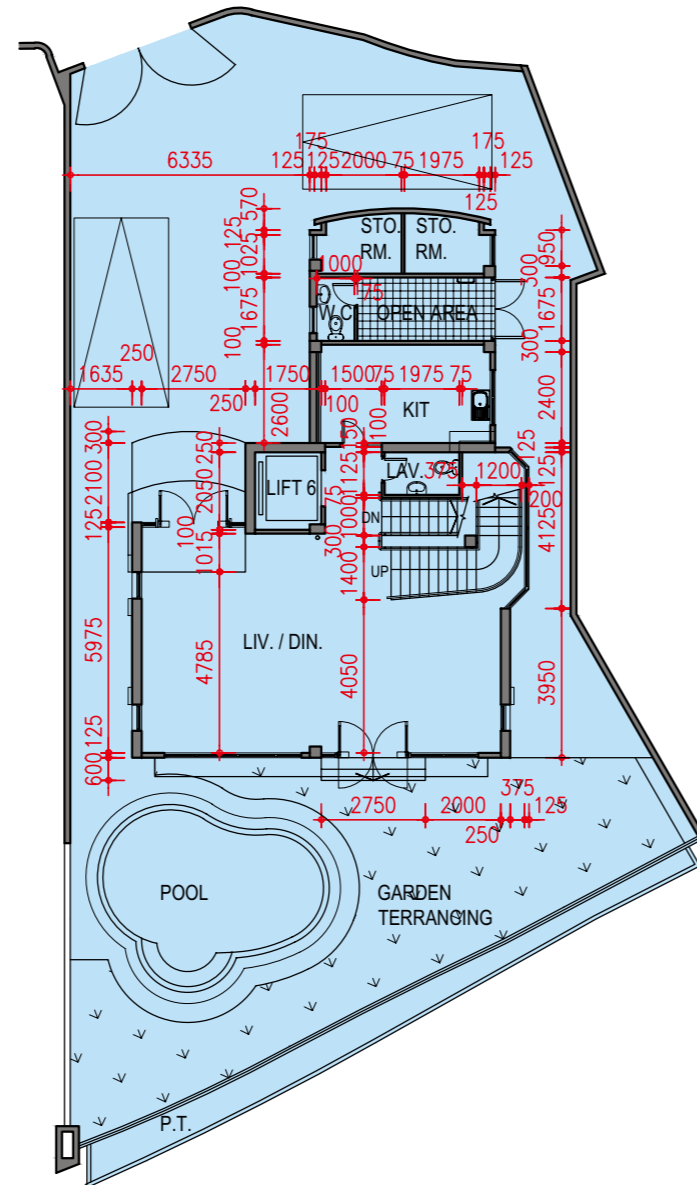
11 FLOOR PLANS OF RESIDENTIAL PROPERTIES IN THE DEVELOPMENT

發展項目的住宅物業的樓面平面圖

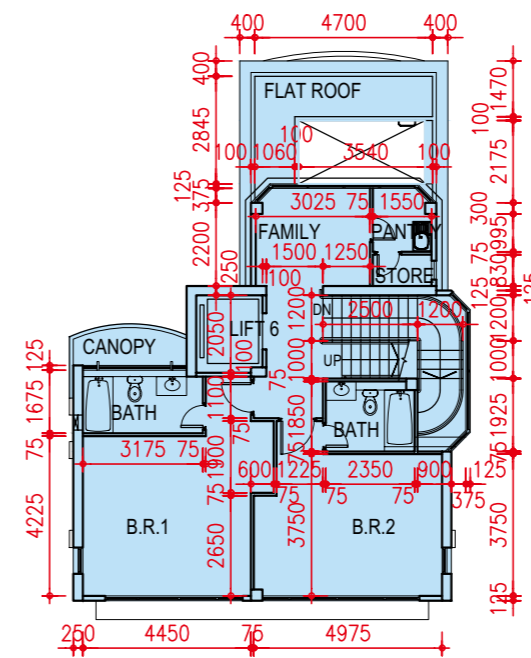
HOUSE D FLOOR PLANS
洋房D平面圖



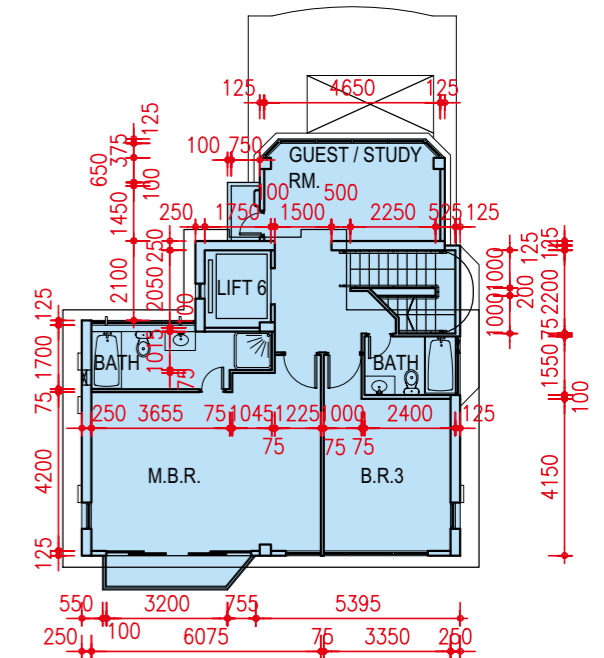
G/F PLAN
地面層平面圖



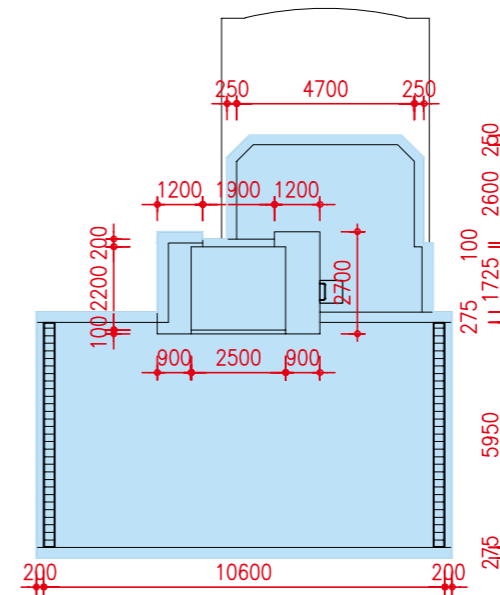
P/F PLAN
平台層平面圖



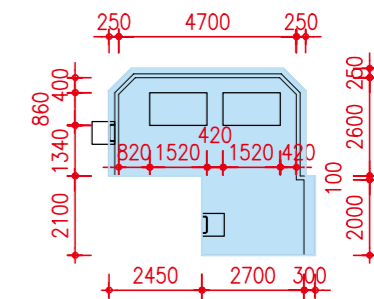
1/F PLAN
1樓平面圖



2/F PLAN
2樓平面圖



ROOF PLAN
天台平面圖



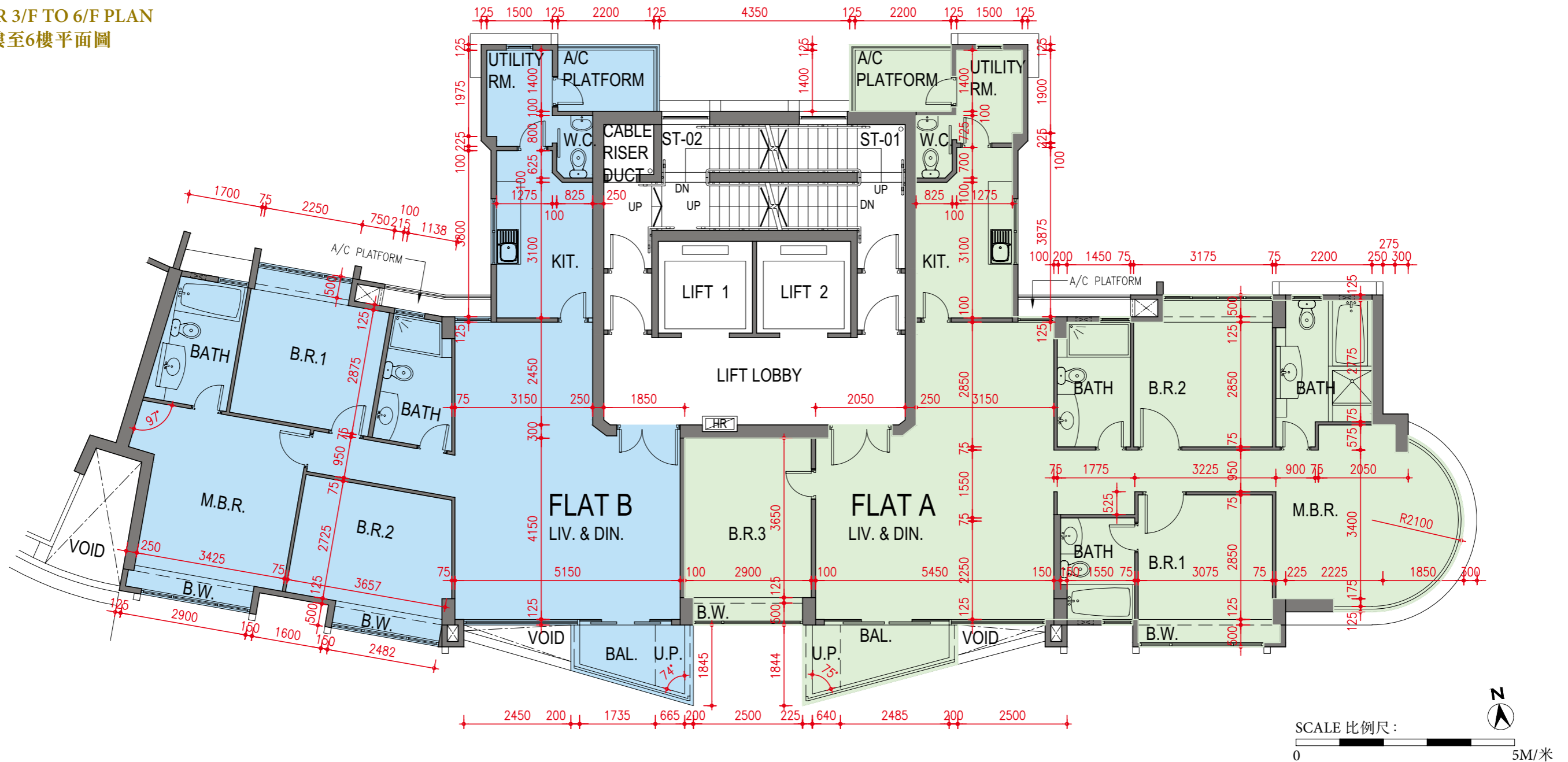
PART PLAN
天台平面圖



11 FLOOR PLANS OF RESIDENTIAL PROPERTIES IN THE DEVELOPMENT

發展項目的住宅物業的樓面平面圖

TOWER 3/F TO 6/F PLAN
大廈3樓至6樓平面圖



Floor 樓層	Flat 單位	Floor-to-floor height (i.e. the height between the top surface of the structural slab of a floor and the top surface of the structural slab of its immediate upper floor) of each residential property (mm) 每個住宅物業的層與層之間的高度 (指該樓層之石屎地台面與上一層石屎地台面之高度距離) (毫米)	The thickness of the floor slabs (excluding plaster) of each residential property (mm) 每個住宅物業的樓板 (不包括灰泥) 的厚度 (毫米)
3/F-6/F 3樓至6樓	A	3150	150
	B	3150	150

The internal areas of the residential properties on the upper floors will generally be slightly larger than those on the lower floors because of the reducing thickness of the structural walls on the upper floors.

因住宅物業的較高樓層的結構牆的厚度遞減，較高樓層的內部面積，一般比較低樓層的內部面積稍大。

Notes:

- The dimensions in floor plans are all structural dimensions in millimetre.
- Please refer to Page 17 of this sales brochure for remarks and legend of the terms and abbreviations shown on the floor plans.

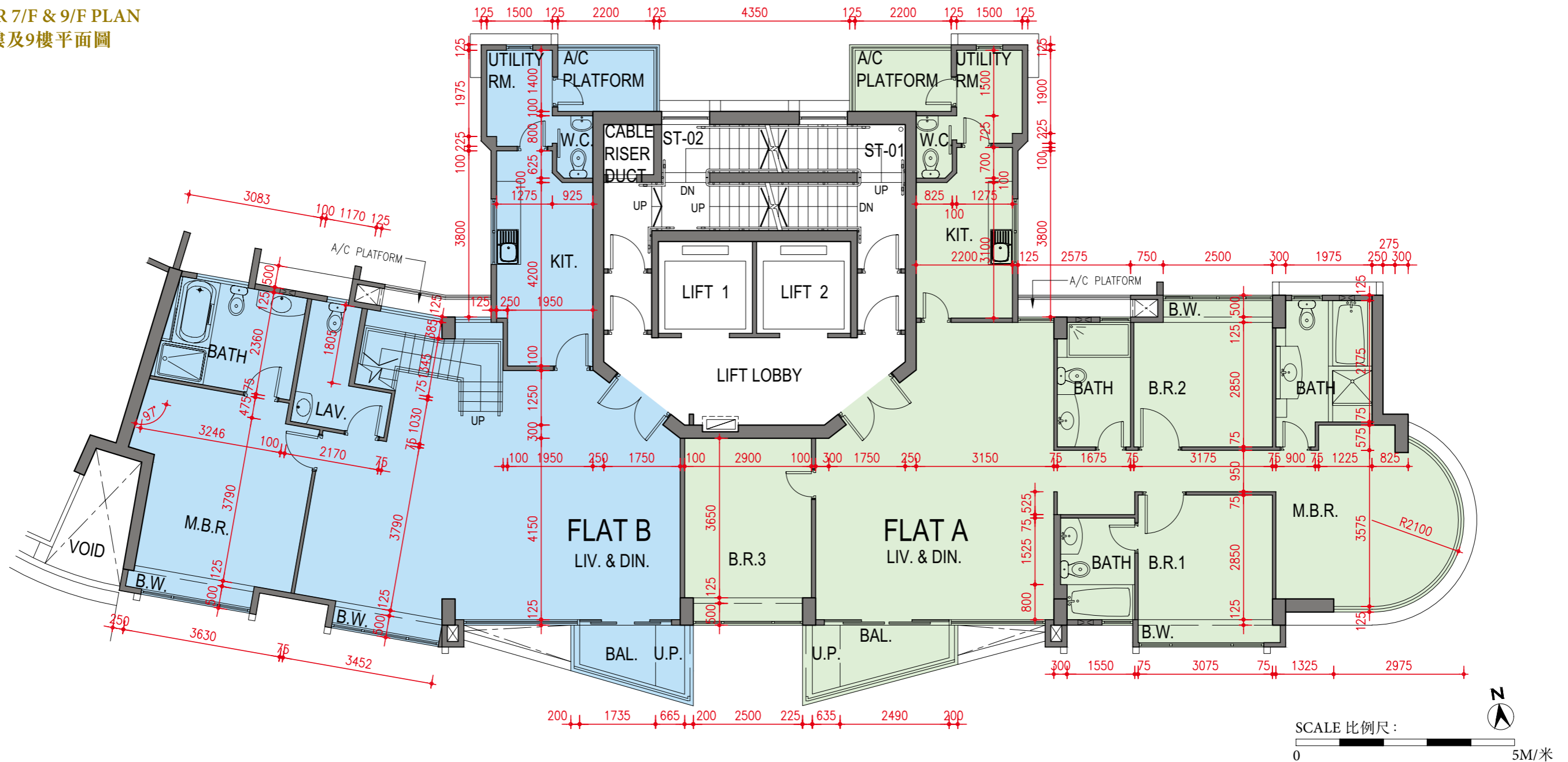
備註：

- 樓層平面圖所列之尺寸數字為以毫米標示之建築結構尺寸。
- 請參閱本售樓說明書第17頁關於本樓面平面圖上顯示的名詞及簡稱之附註及圖例。

11 FLOOR PLANS OF RESIDENTIAL PROPERTIES IN THE DEVELOPMENT

發展項目的住宅物業的樓面平面圖

TOWER 7/F & 9/F PLAN
大廈7樓及9樓平面圖



Floor 樓層	Flat 單位	Floor-to-floor height (i.e. the height between the top surface of the structural slab of a floor and the top surface of the structural slab of its immediate upper floor) of each residential property (mm) 每個住宅物業的層與層之間的高度 (指該樓層之石屎地台面與上一層石屎地台面之高度距離) (毫米)	The thickness of the floor slabs (excluding plaster) of each residential property (mm) 每個住宅物業的樓板 (不包括灰泥) 的厚度 (毫米)
7/F 7樓	A	3150	150
	B	3150	150
9/F 9樓	A	3150	150 / 180
	B	3150	150 / 165

The internal areas of the residential properties on the upper floors will generally be slightly larger than those on the lower floors because of the reducing thickness of the structural walls on the upper floors.

因住宅物業的較高樓層的結構牆的厚度遞減，較高樓層的內部面積，一般比較低樓層的內部面積稍大。

Notes:

- The dimensions in floor plans are all structural dimensions in millimetre.
- Please refer to Page 17 of this sales brochure for remarks and legend of the terms and abbreviations shown on the floor plans.

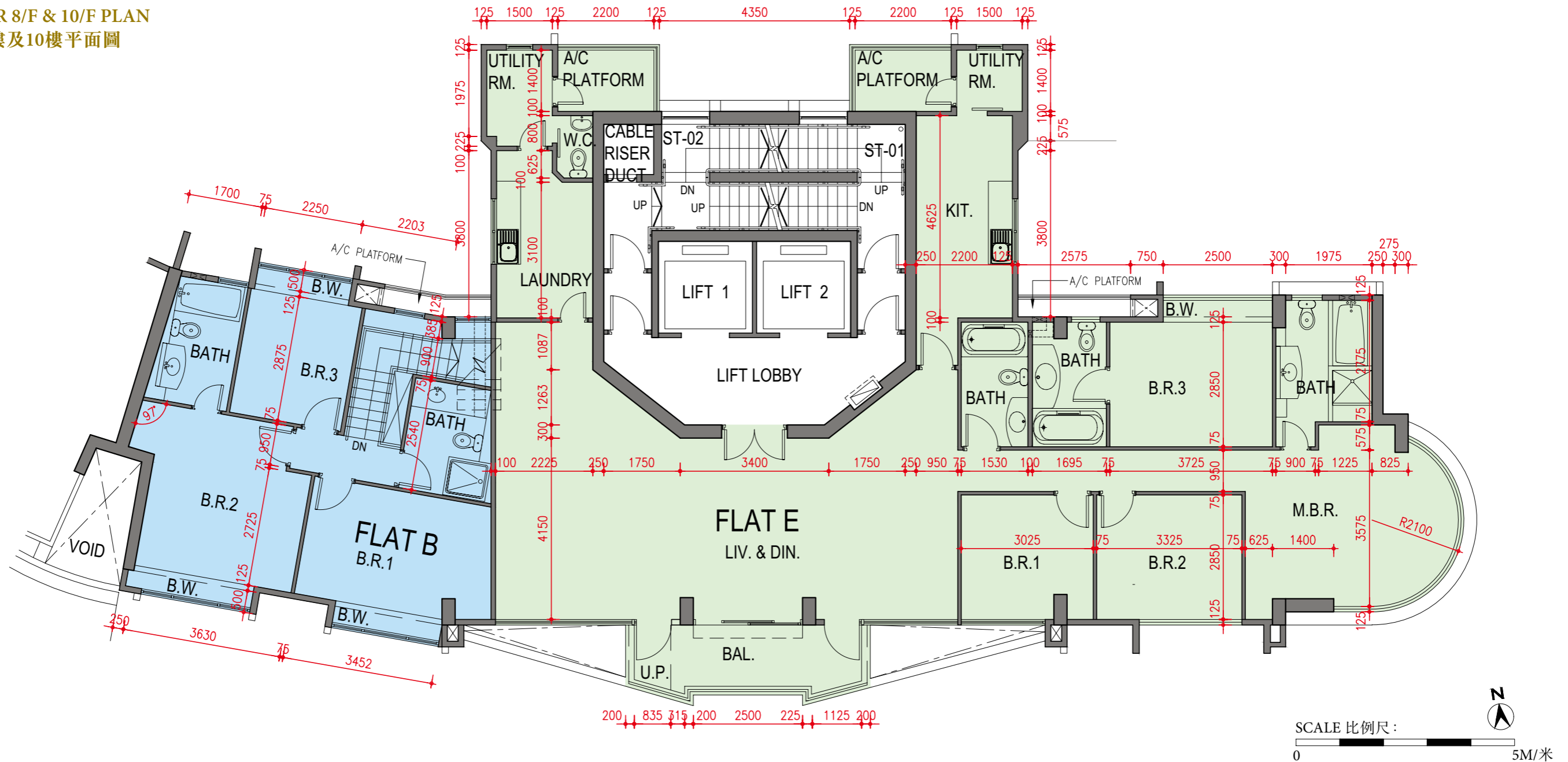
備註：

- 樓層平面圖所列之尺寸數字為以毫米標示之建築結構尺寸。
- 請參閱本售樓說明書第17頁關於本樓面平面圖上顯示的名詞及簡稱之附註及圖例。

11 FLOOR PLANS OF RESIDENTIAL PROPERTIES IN THE DEVELOPMENT

發展項目的住宅物業的樓面平面圖

TOWER 8/F & 10/F PLAN
大廈8樓及10樓平面圖



Floor 樓層	Flat 單位	Floor-to-floor height (i.e. the height between the top surface of the structural slab of a floor and the top surface of the structural slab of its immediate upper floor) of each residential property (mm) 每個住宅物業的層與層之間的高度 (指該樓層之石屎地台面與上一層石屎地台面之高度距離) (毫米)	The thickness of the floor slabs (excluding plaster) of each residential property (mm) 每個住宅物業的樓板 (不包括灰泥) 的厚度 (毫米)
8/F & 10/F 8樓及10樓	B	3150	150
	E	3150	150 / 180

The internal areas of the residential properties on the upper floors will generally be slightly larger than those on the lower floors because of the reducing thickness of the structural walls on the upper floors.

因住宅物業的較高樓層的結構牆的厚度遞減，較高樓層的內部面積，一般比較低樓層的內部面積稍大。

Notes:

- The dimensions in floor plans are all structural dimensions in millimetre.
- Please refer to Page 17 of this sales brochure for remarks and legend of the terms and abbreviations shown on the floor plans.

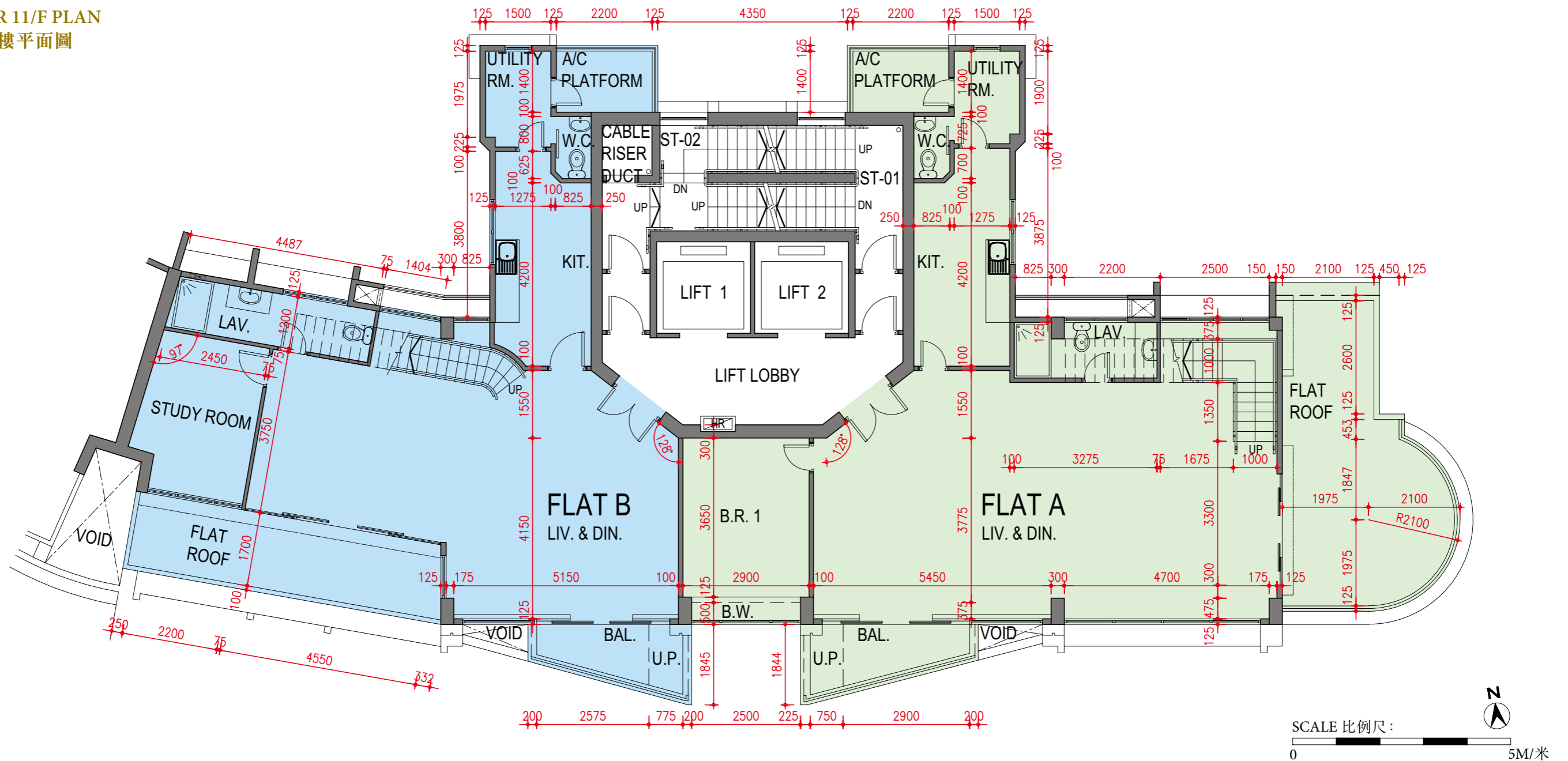
備註：

- 樓層平面圖所列之尺寸數字為以毫米標示之建築結構尺寸。
- 請參閱本售樓說明書第17頁關於本樓面平面圖上顯示的名詞及簡稱之附註及圖例。

11 FLOOR PLANS OF RESIDENTIAL PROPERTIES IN THE DEVELOPMENT

發展項目的住宅物業的樓面平面圖

TOWER 11/F PLAN
大廈11樓平面圖



Floor 樓層	Flat 單位	Floor-to-floor height (i.e. the height between the top surface of the structural slab of a floor and the top surface of the structural slab of its immediate upper floor) of each residential property (mm) 每個住宅物業的層與層之間的高度 (指該樓層之石屎地台面與上一層石屎地台面之高度距離) (毫米)	The thickness of the floor slabs (excluding plaster) of each residential property (mm) 每個住宅物業的樓板 (不包括灰泥) 的厚度 (毫米)
11/F 11樓	A	4000	150 / 165 / 180
	B	4000	150 / 165

The internal areas of the residential properties on the upper floors will generally be slightly larger than those on the lower floors because of the reducing thickness of the structural walls on the upper floors.

因住宅物業的較高樓層的結構牆的厚度遞減，較高樓層的內部面積，一般比較低樓層的內部面積稍大。

Notes:

- The dimensions in floor plans are all structural dimensions in millimetre.
- Please refer to Page 17 of this sales brochure for remarks and legend of the terms and abbreviations shown on the floor plans.

備註：

- 樓層平面圖所列之尺寸數字為以毫米標示之建築結構尺寸。
- 請參閱本售樓說明書第17頁關於本樓面平面圖上顯示的名詞及簡稱之附註及圖例。

11 FLOOR PLANS OF RESIDENTIAL PROPERTIES IN THE DEVELOPMENT

發展項目的住宅物業的樓面平面圖

TOWER 12/F PLAN
大廈12樓平面圖



Floor 樓層	Flat 單位	Floor-to-floor height (i.e. the height between the top surface of the structural slab of a floor and the top surface of the structural slab of its immediate upper floor) of each residential property (mm) 每個住宅物業的層與層之間的高度 (指該樓層之石屎地台面與上一層石屎地台面之高度距離) (毫米)	The thickness of the floor slabs (excluding plaster) of each residential property (mm) 每個住宅物業的樓板 (不包括灰泥) 的厚度 (毫米)
12/F 12樓	A	3500	150 / 165 / 180
	B	3500	150 / 165

The internal areas of the residential properties on the upper floors will generally be slightly larger than those on the lower floors because of the reducing thickness of the structural walls on the upper floors.

因住宅物業的較高樓層的結構牆的厚度遞減，較高樓層的內部面積，一般比較低樓層的內部面積稍大。

Notes:

- The dimensions in floor plans are all structural dimensions in millimetre.
- Please refer to Page 17 of this sales brochure for remarks and legend of the terms and abbreviations shown on the floor plans.

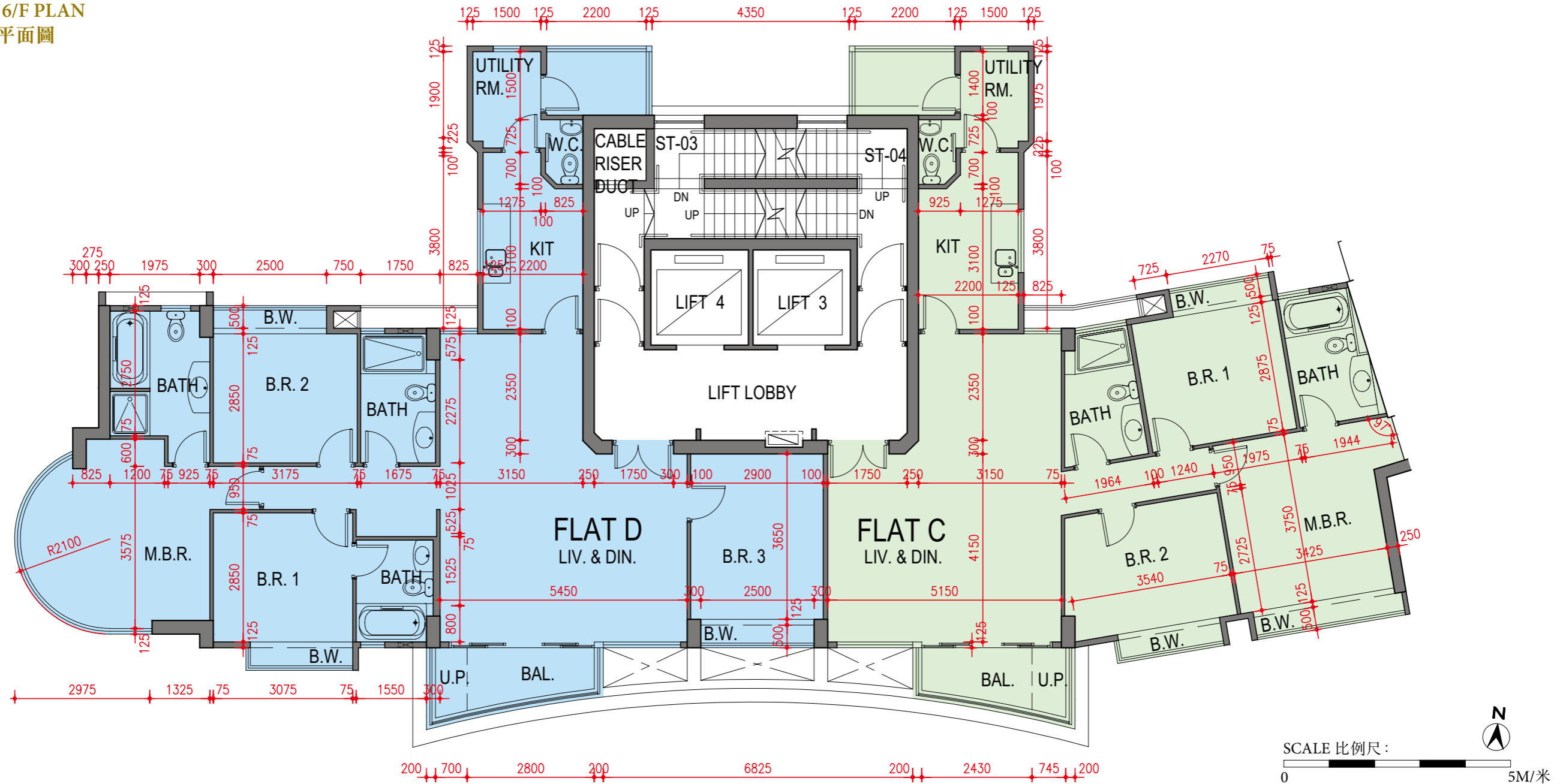
備註：

- 樓層平面圖所列之尺寸數字為以毫米標示之建築結構尺寸。
- 請參閱本售樓說明書第17頁關於本樓面平面圖上顯示的名詞及簡稱之附註及圖例。

11 FLOOR PLANS OF RESIDENTIAL PROPERTIES IN THE DEVELOPMENT

發展項目的住宅物業的樓面平面圖

TOWER 3/F & 6/F PLAN
大廈3樓及6樓平面圖



Floor 樓層	Flat 單位	Floor-to-floor height (i.e. the height between the top surface of the structural slab of a floor and the top surface of the structural slab of its immediate upper floor) of each residential property (mm) 每個住宅物業的層與層之間的高度 (指該樓層之石屎地台面與上一層石屎地台面之高度距離) (毫米)	The thickness of the floor slabs (excluding plaster) of each residential property (mm) 每個住宅物業的樓板 (不包括灰泥) 的厚度 (毫米)
3/F & 6F 3樓及6樓	C	3150	150
	D	3150	150

The internal areas of the residential properties on the upper floors will generally be slightly larger than those on the lower floors because of the reducing thickness of the structural walls on the upper floors.

因住宅物業的較高樓層的結構牆的厚度遞減，較高樓層的內部面積，一般比較低樓層的內部面積稍大。

Notes:

- The dimensions in floor plans are all structural dimensions in millimetre.
- Please refer to Page 17 of this sales brochure for remarks and legend of the terms and abbreviations shown on the floor plans.

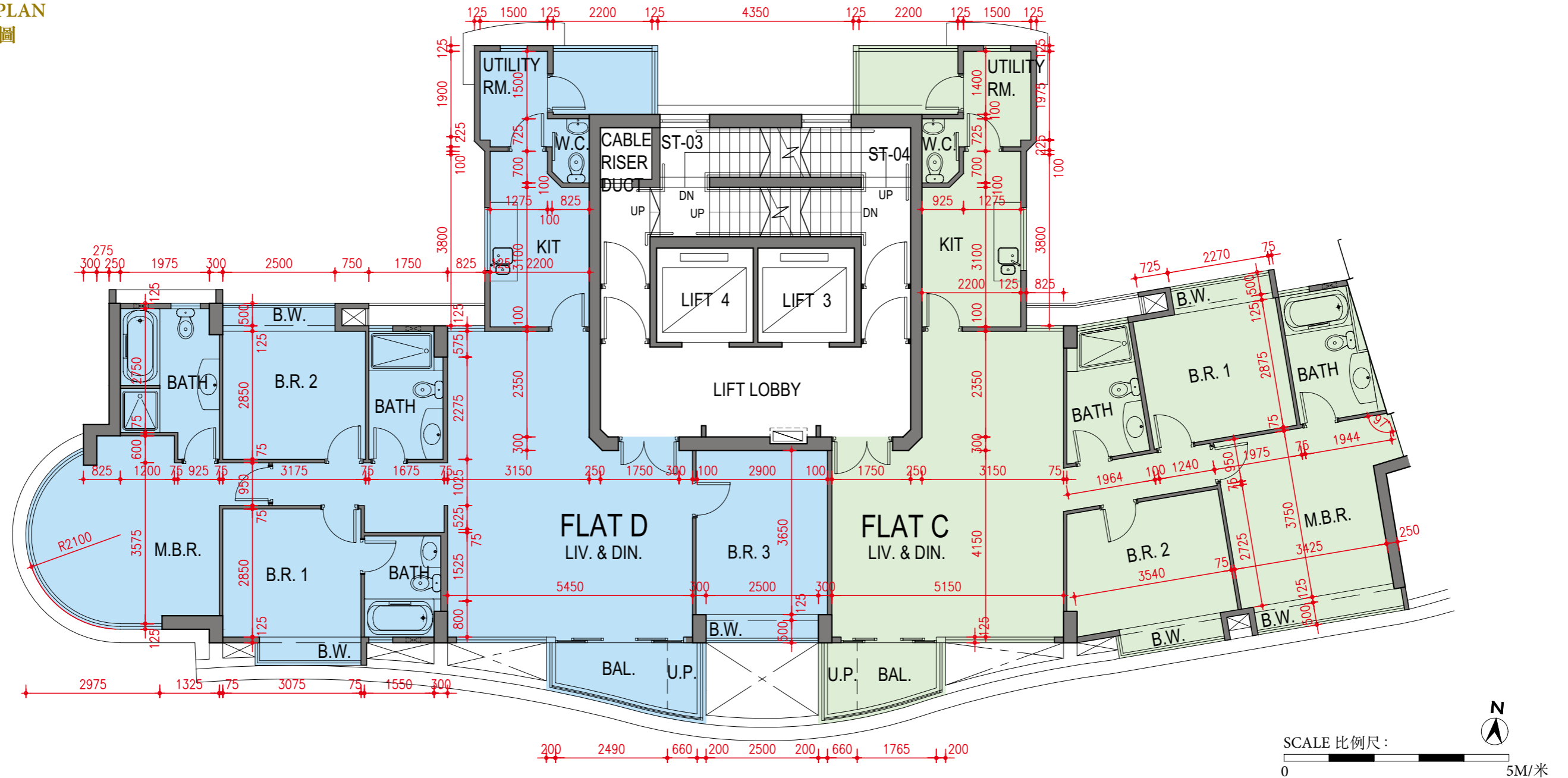
備註：

- 樓層平面圖所列之尺寸數字為以毫米標示之建築結構尺寸。
- 請參閱本售樓說明書第17頁關於本樓面平面圖上顯示的名詞及簡稱之附註及圖例。

11 FLOOR PLANS OF RESIDENTIAL PROPERTIES IN THE DEVELOPMENT

發展項目的住宅物業的樓面平面圖

TOWER 5/F PLAN
大廈5樓平面圖



Floor 樓層	Flat 單位	Floor-to-floor height (i.e. the height between the top surface of the structural slab of a floor and the top surface of the structural slab of its immediate upper floor) of each residential property (mm) 每個住宅物業的層與層之間的高度 (指該樓層之石屎地台面與上一層石屎地台面之高度距離) (毫米)	The thickness of the floor slabs (excluding plaster) of each residential property (mm) 每個住宅物業的樓板 (不包括灰泥) 的厚度 (毫米)
5/F 5樓	C	3150	150
	D	3150	150

The internal areas of the residential properties on the upper floors will generally be slightly larger than those on the lower floors because of the reducing thickness of the structural walls on the upper floors.
因住宅物業的較高樓層的結構牆的厚度遞減，較高樓層的內部面積，一般比較低樓層的內部面積稍大。

Notes:

- The dimensions in floor plans are all structural dimensions in millimetre.
- Please refer to Page 17 of this sales brochure for remarks and legend of the terms and abbreviations shown on the floor plans.

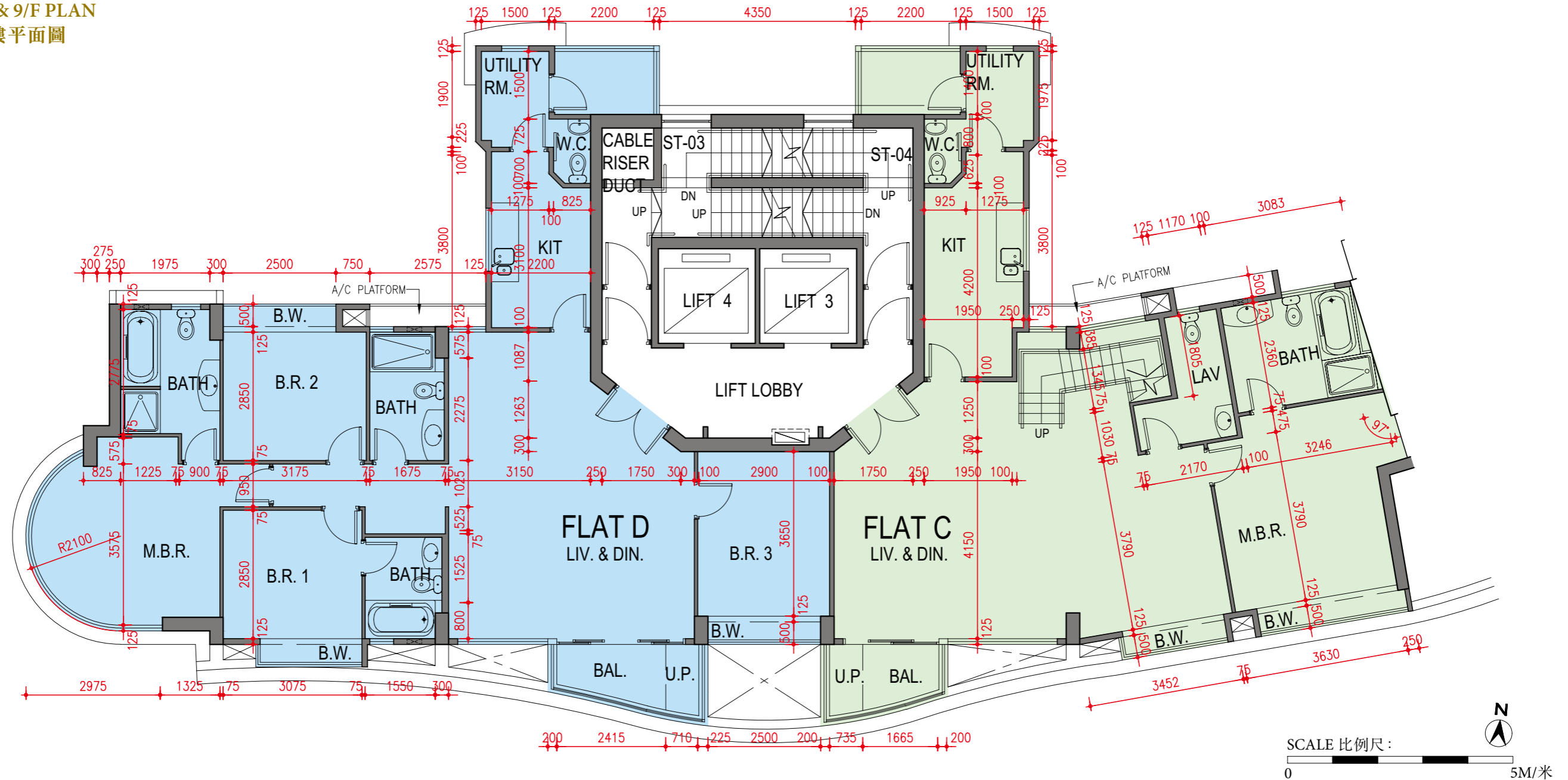
備註:

- 樓層平面圖所列之尺寸數字為以毫米標示之建築結構尺寸。
- 請參閱本售樓說明書第17頁關於本樓面平面圖上顯示的名詞及簡稱之附註及圖例。

11 FLOOR PLANS OF RESIDENTIAL PROPERTIES IN THE DEVELOPMENT

發展項目的住宅物業的樓面平面圖

TOWER 7/F & 9/F PLAN
大廈7樓及9樓平面圖



Floor 樓層	Flat 單位	Floor-to-floor height (i.e. the height between the top surface of the structural slab of a floor and the top surface of the structural slab of its immediate upper floor) of each residential property (mm) 每個住宅物業的層與層之間的高度 (指該樓層之石屎地台面與上一層石屎地台面之高度距離) (毫米)	The thickness of the floor slabs (excluding plaster) of each residential property (mm) 每個住宅物業的樓板 (不包括灰泥) 的厚度 (毫米)
7/F 7樓	C	3150	150
	D	3150	150
9/F 9樓	C	3150	150 / 165
	D	3150	150 / 180

The internal areas of the residential properties on the upper floors will generally be slightly larger than those on the lower floors because of the reducing thickness of the structural walls on the upper floors.

因住宅物業的較高樓層的結構牆的厚度遞減，較高樓層的內部面積，一般比較低樓層的內部面積稍大。

Notes:

- The dimensions in floor plans are all structural dimensions in millimetre.
- Please refer to Page 17 of this sales brochure for remarks and legend of the terms and abbreviations shown on the floor plans.

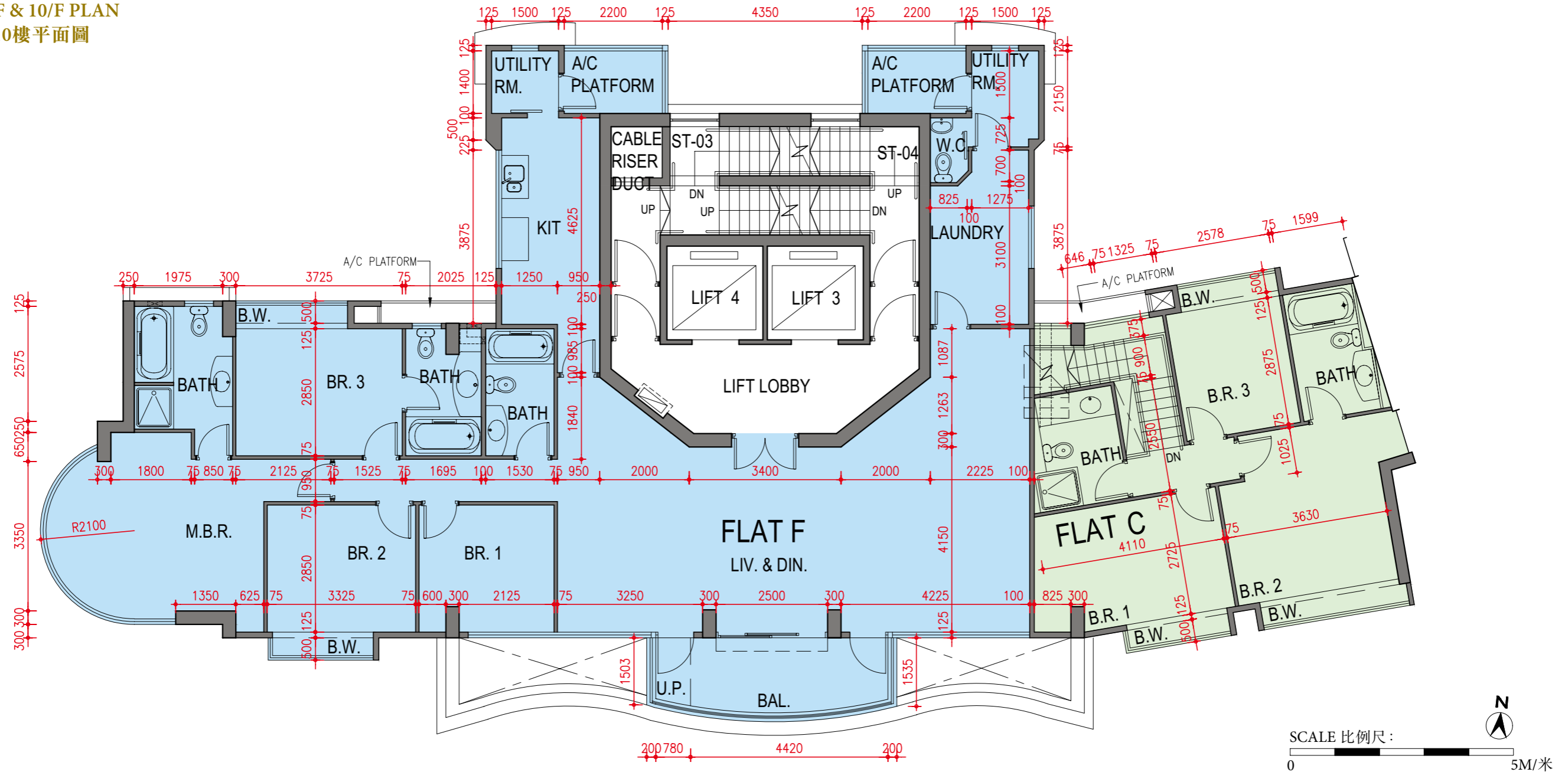
備註：

- 樓層平面圖所列之尺寸數字為以毫米標示之建築結構尺寸。
- 請參閱本售樓說明書第17頁關於本樓面平面圖上顯示的名詞及簡稱之附註及圖例。

11 FLOOR PLANS OF RESIDENTIAL PROPERTIES IN THE DEVELOPMENT

發展項目的住宅物業的樓面平面圖

TOWER 8/F & 10/F PLAN
大廈8樓及10樓平面圖



Floor 樓層	Flat 單位	Floor-to-floor height (i.e. the height between the top surface of the structural slab of a floor and the top surface of the structural slab of its immediate upper floor) of each residential property (mm) 每個住宅物業的層與層之間的高度 (指該樓層之石屎地台面與上一層石屎地台面之高度距離) (毫米)	The thickness of the floor slabs (excluding plaster) of each residential property (mm) 每個住宅物業的樓板 (不包括灰泥) 的厚度 (毫米)
8/F & 10/F 8樓及10樓	C	3150	150
	F	3150	150 / 180

The internal areas of the residential properties on the upper floors will generally be slightly larger than those on the lower floors because of the reducing thickness of the structural walls on the upper floors.

因住宅物業的較高樓層的結構牆的厚度遞減，較高樓層的內部面積，一般比較低樓層的內部面積稍大。

Notes:

- The dimensions in floor plans are all structural dimensions in millimetre.
- Please refer to Page 17 of this sales brochure for remarks and legend of the terms and abbreviations shown on the floor plans.

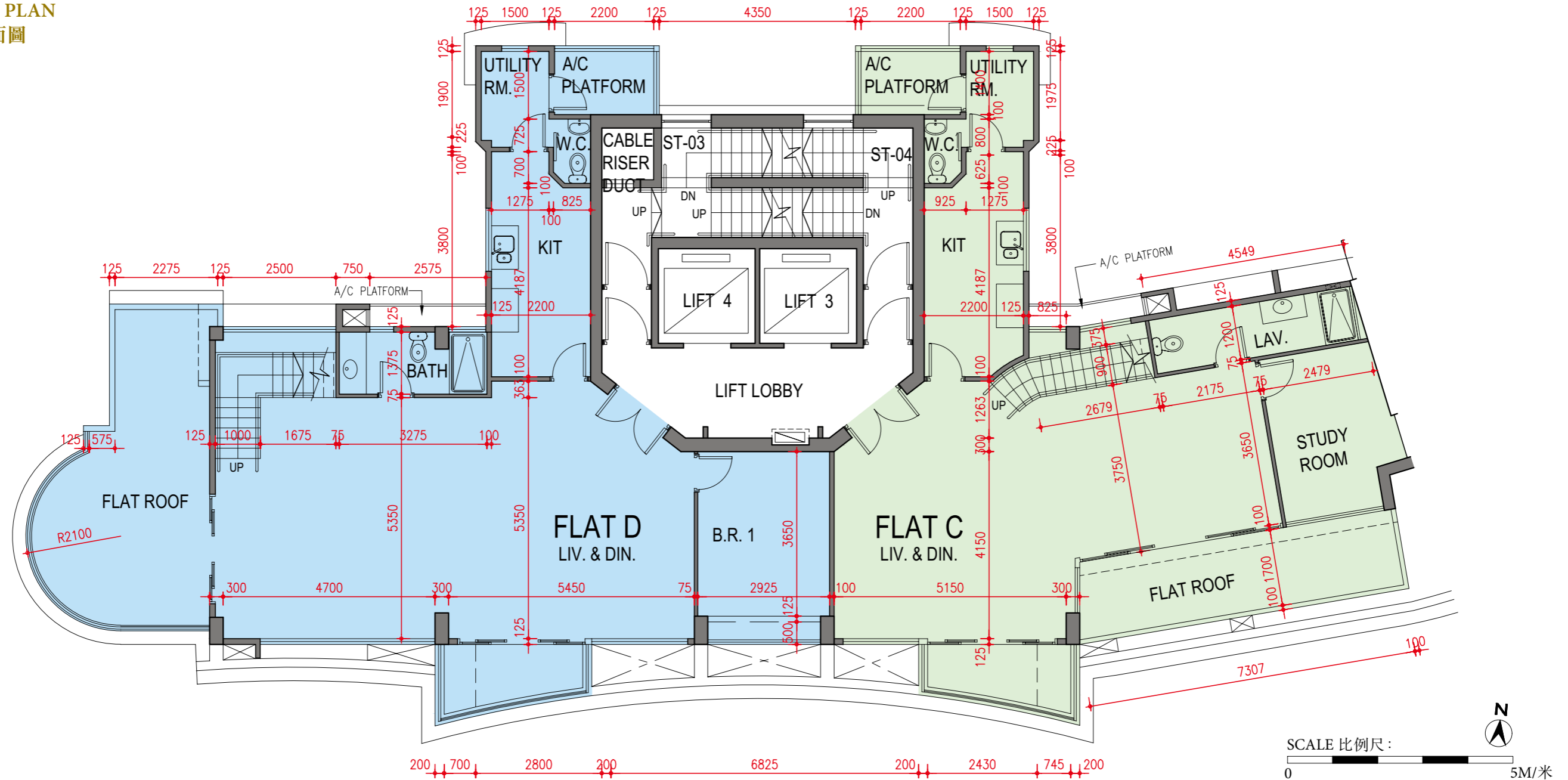
備註：

- 樓層平面圖所列之尺寸數字為以毫米標示之建築結構尺寸。
- 請參閱本售樓說明書第17頁關於本樓面平面圖上顯示的名詞及簡稱之附註及圖例。

11 FLOOR PLANS OF RESIDENTIAL PROPERTIES IN THE DEVELOPMENT

發展項目的住宅物業的樓面平面圖

TOWER 11/F PLAN
大廈11樓平面圖



Floor 樓層	Flat 單位	Floor-to-floor height (i.e. the height between the top surface of the structural slab of a floor and the top surface of the structural slab of its immediate upper floor) of each residential property (mm) 每個住宅物業的層與層之間的高度 (指該樓層之石屎地台面與上一層石屎地台面之高度距離) (毫米)	The thickness of the floor slabs (excluding plaster) of each residential property (mm) 每個住宅物業的樓板 (不包括灰泥) 的厚度 (毫米)
11/F 11樓	C	4000	150 / 165
	D	4000	150 / 165 / 180

The internal areas of the residential properties on the upper floors will generally be slightly larger than those on the lower floors because of the reducing thickness of the structural walls on the upper floors.

因住宅物業的較高樓層的結構牆的厚度遞減，較高樓層的內部面積，一般比較低樓層的內部面積稍大。

Notes:

- The dimensions in floor plans are all structural dimensions in millimetre.
- Please refer to Page 17 of this sales brochure for remarks and legend of the terms and abbreviations shown on the floor plans.

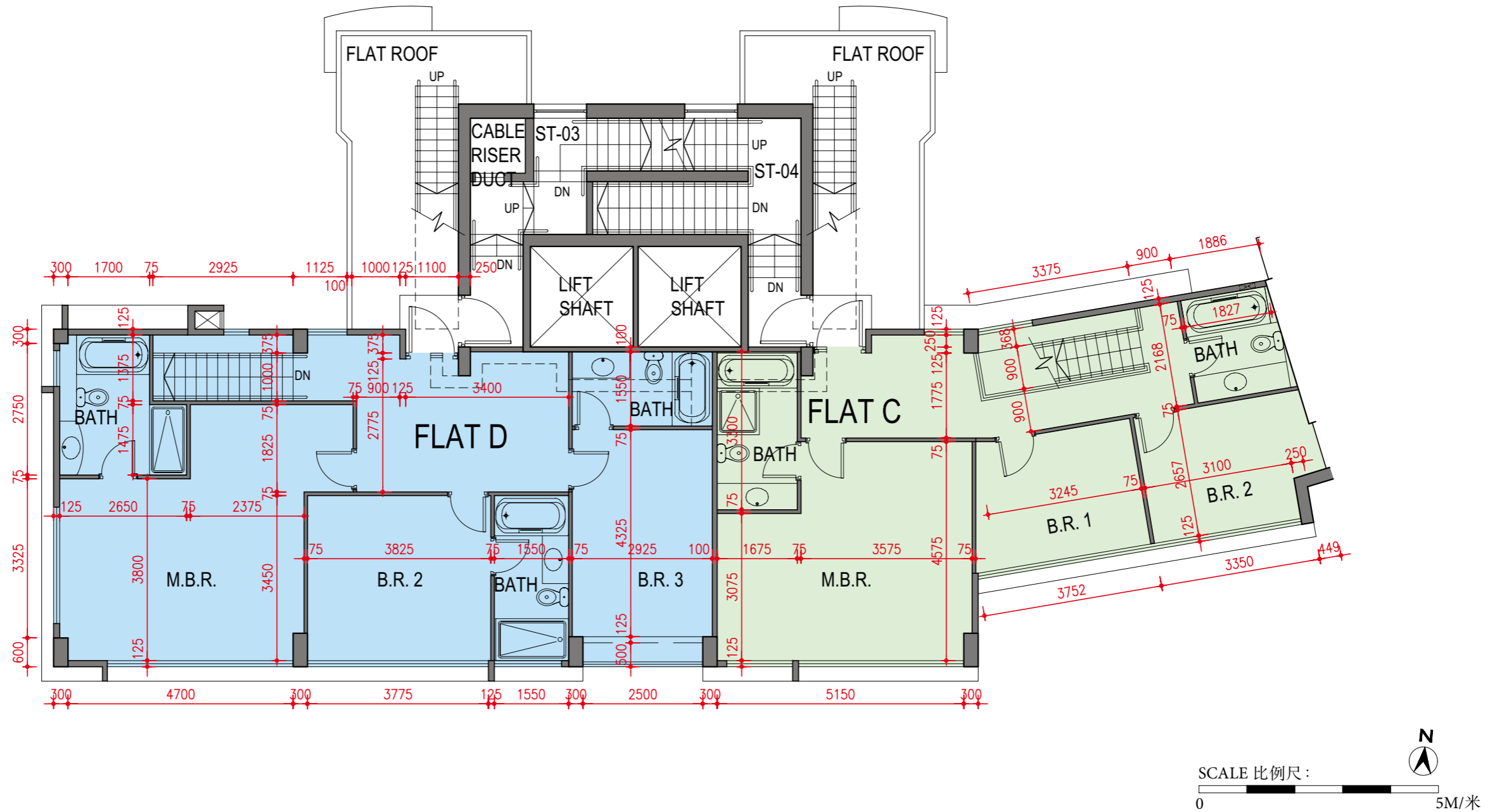
備註：

- 樓層平面圖所列之尺寸數字為以毫米標示之建築結構尺寸。
- 請參閱本售樓說明書第17頁關於本樓面平面圖上顯示的名詞及簡稱之附註及圖例。

11 FLOOR PLANS OF RESIDENTIAL PROPERTIES IN THE DEVELOPMENT

發展項目的住宅物業的樓面平面圖

TOWER 12/F PLAN
大廈12樓平面圖



Floor 樓層	Flat 單位	Floor-to-floor height (i.e. the height between the top surface of the structural slab of a floor and the top surface of the structural slab of its immediate upper floor) of each residential property (mm) 每個住宅物業的層與層之間的高度 (指該樓層之石屎地台面與上一層石屎地台面之高度距離) (毫米)	The thickness of the floor slabs (excluding plaster) of each residential property (mm) 每個住宅物業的樓板 (不包括灰泥) 的厚度 (毫米)
12/F 12樓	C	3500	150 / 165
	D	3500	150 / 165 / 180

The internal areas of the residential properties on the upper floors will generally be slightly larger than those on the lower floors because of the reducing thickness of the structural walls on the upper floors.

因住宅物業的較高樓層的結構牆的厚度遞減，較高樓層的內部面積，一般比較低樓層的內部面積稍大。

Notes:

- The dimensions in floor plans are all structural dimensions in millimetre.
- Please refer to Page 17 of this sales brochure for remarks and legend of the terms and abbreviations shown on the floor plans.

備註：

- 樓層平面圖所列之尺寸數字為以毫米標示之建築結構尺寸。
- 請參閱本售樓說明書第17頁關於本樓面平面圖上顯示的名詞及簡稱之附註及圖例。