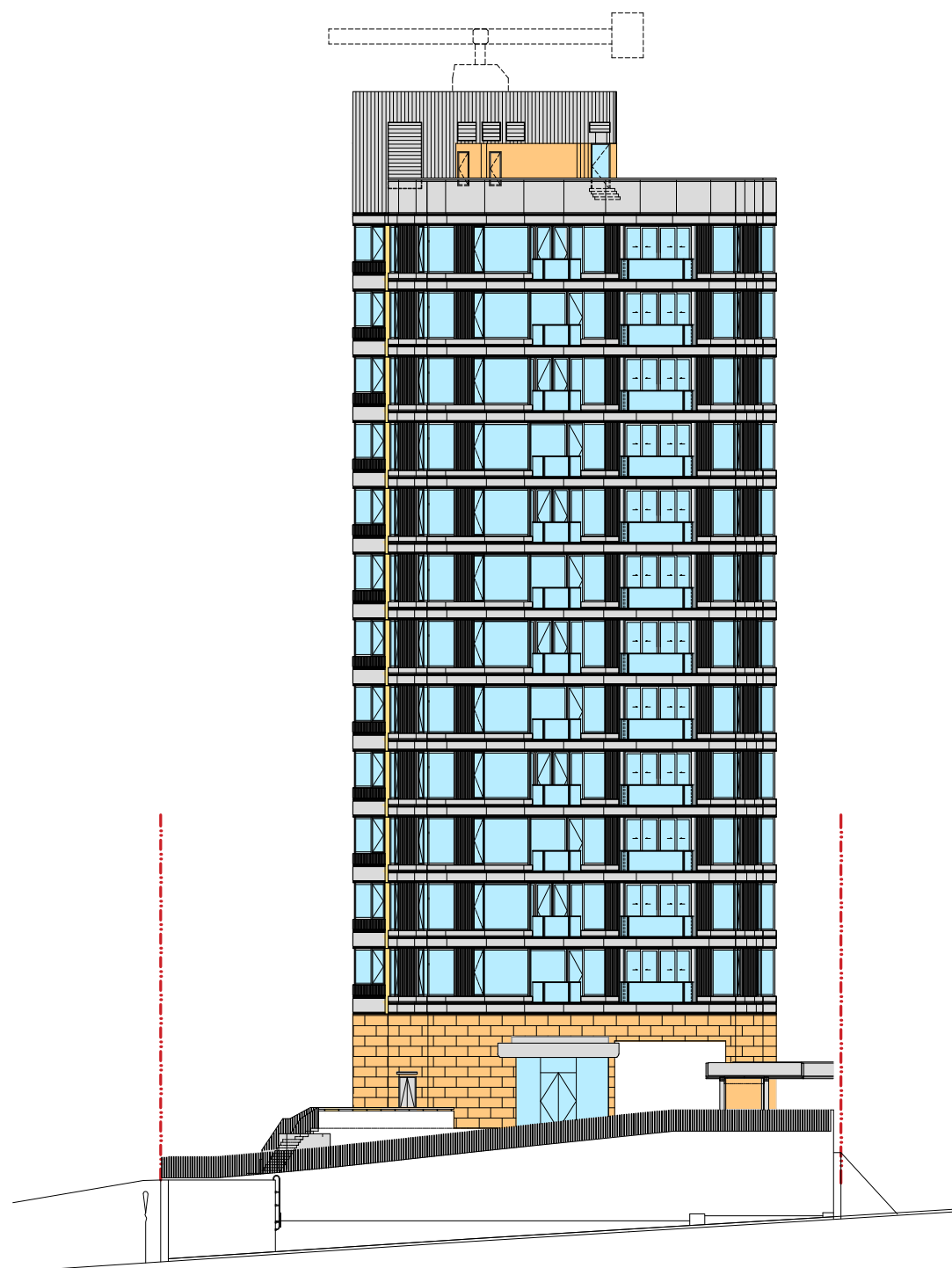
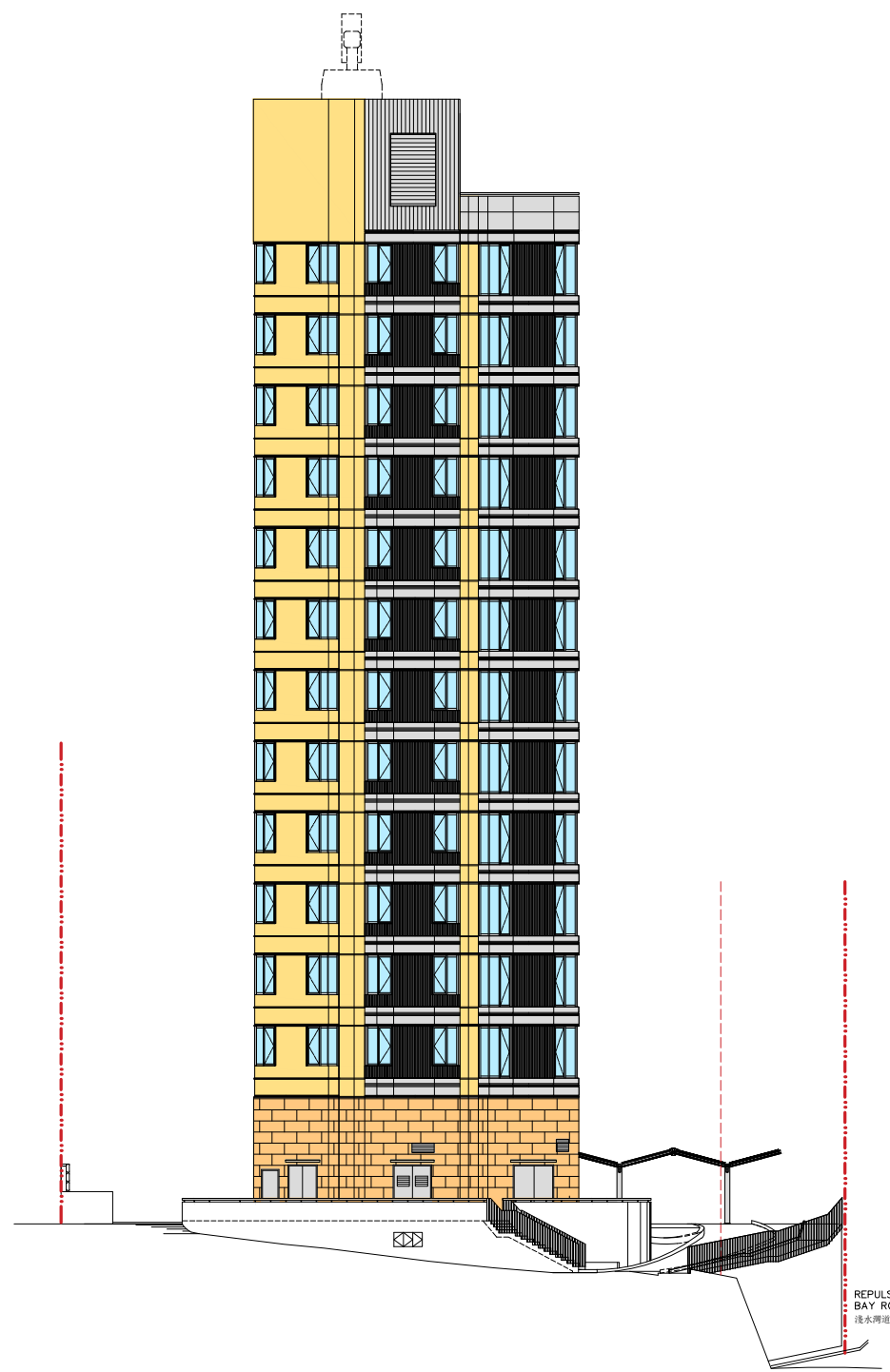


ELEVATION PLAN

立面圖

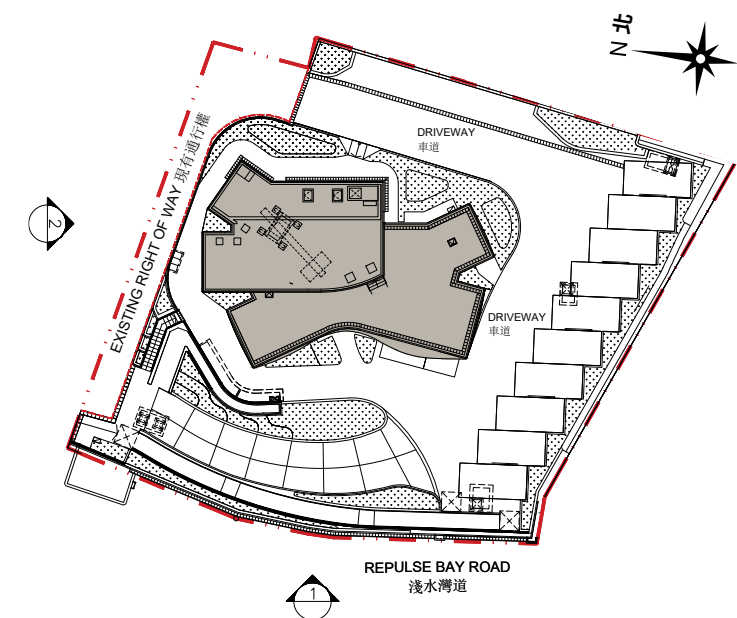


ELEVATION 1
立面圖 1



ELEVATION 2
立面圖 2

BLOCK PLAN 座向圖



- Boundary of the Development
發展項目之界線
- Boundary of Existing Right of Way
現有通行權之界線

It has been certified by the Authorized Person for the Development that the above elevations:

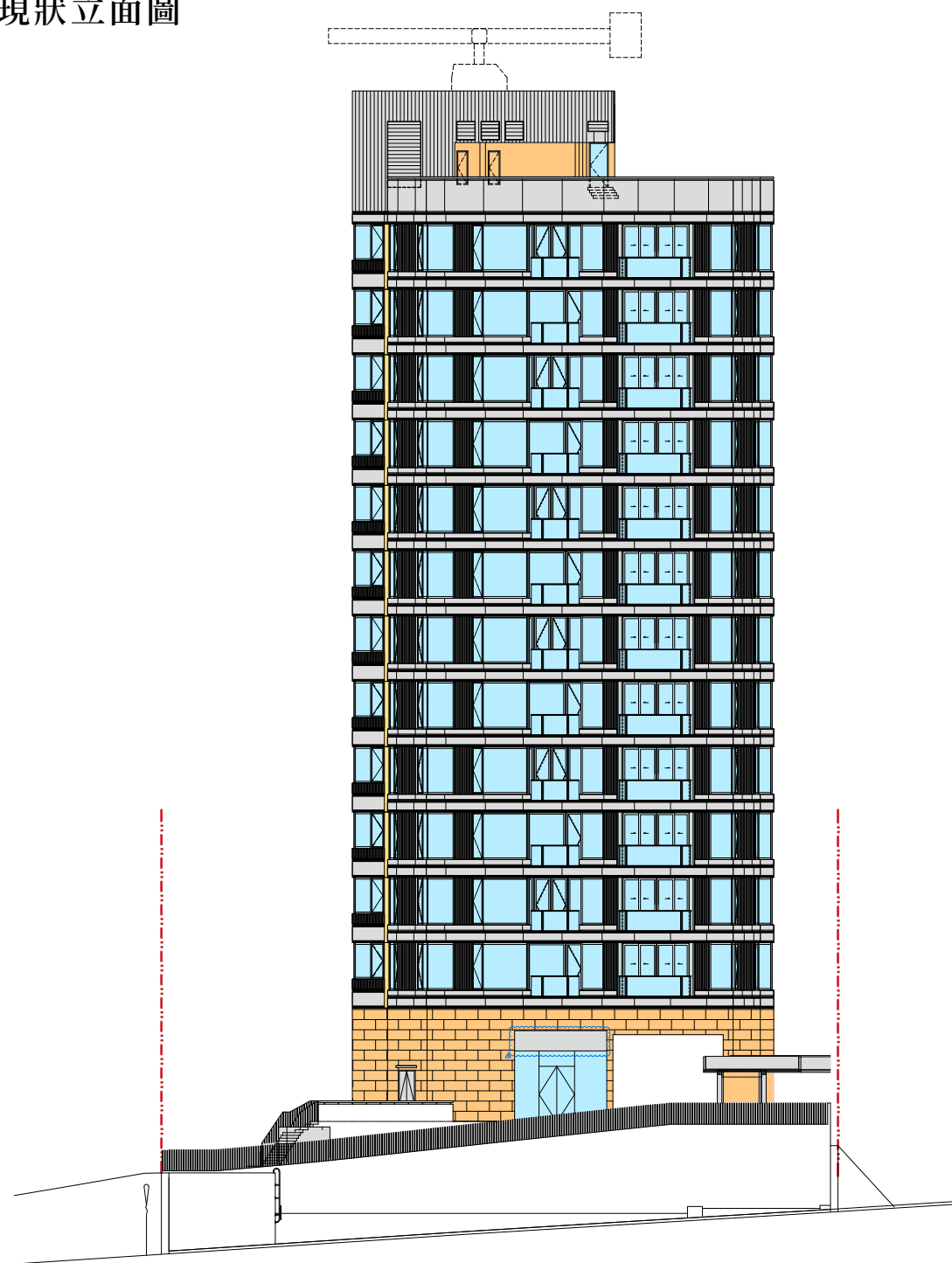
- (a) are prepared on the basis of the approved building plans for the Development as of 10 April 2025; and
- (b) are in general accordance with the outward appearance of the Development.

發展項目的認可人士已經證明該等立面：

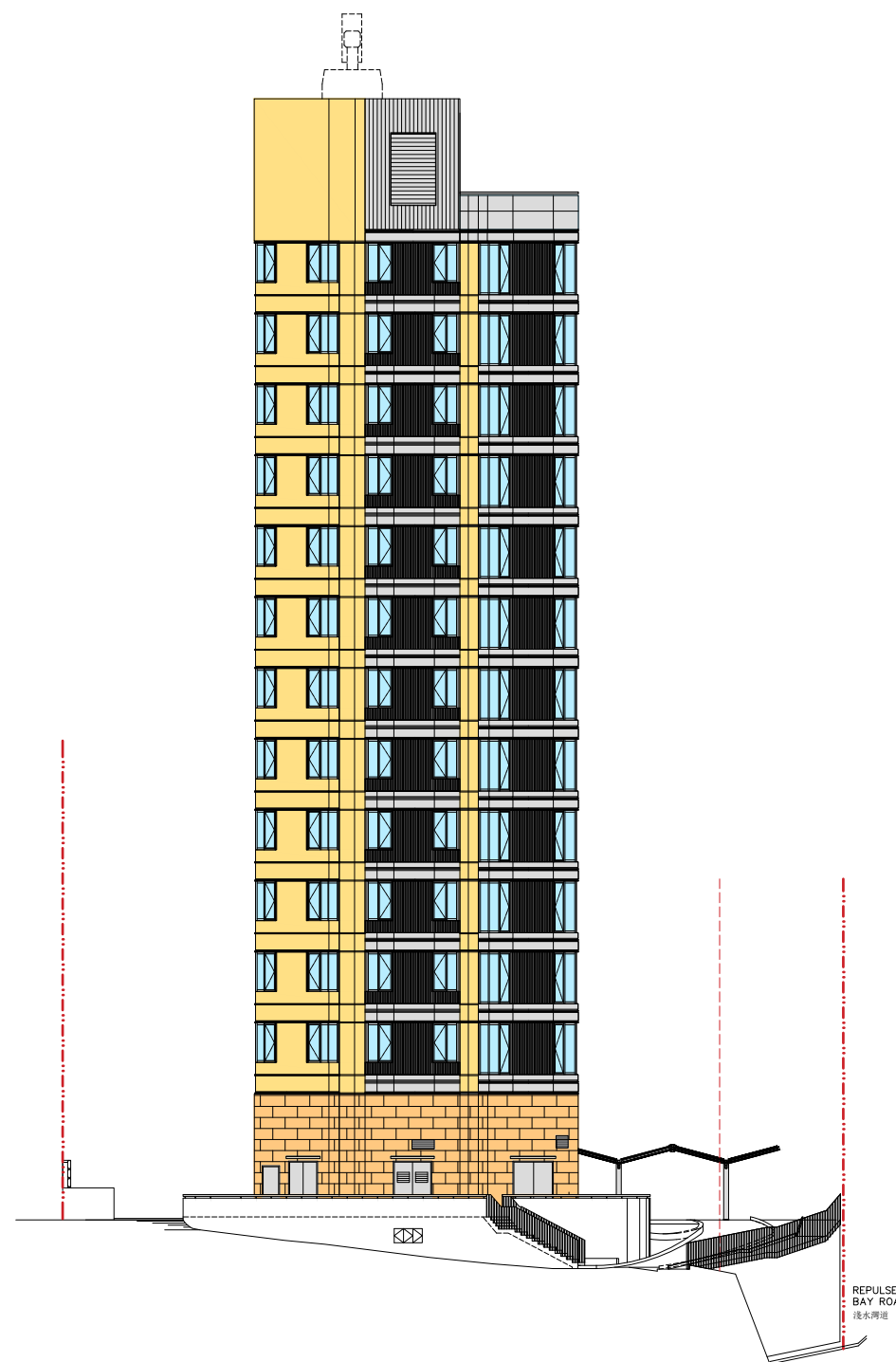
- (a) 以2025年4月10日的情況為準的發展項目的經批准的建築圖則為基礎擬備；及
- (b) 大致上與發展項目的外觀一致。

ELEVATION PLAN 立面圖

AS-IS ELEVATION PLAN 現狀立面圖

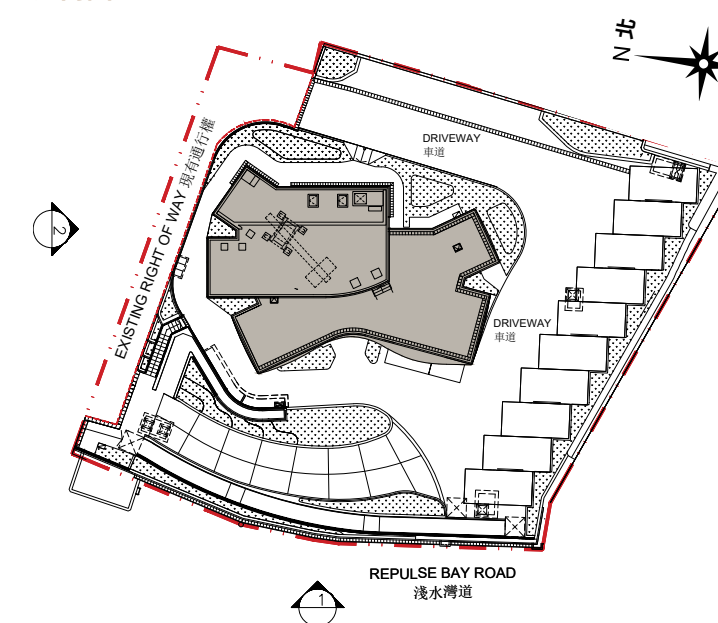


ELEVATION 1
立面圖 1



ELEVATION 2
立面圖 2

BLOCK PLAN 座向圖



- Boundary of the Development
發展項目之界線
- Boundary of Existing Right of Way
現有通行權之界線

It has been certified by the Authorized Person for the Development that the above elevations:

- (a) are prepared on the basis of the approved building plans for the Development as of 10 April 2025; and
- (b) are in general accordance with the outward appearance of the Development.

發展項目的認可人士已經證明該等立面：

- (a) 以2025年4月10日的情況為準的發展項目的經批准的建築圖則為基礎擬備；及
- (b) 大致上與發展項目的外觀一致。

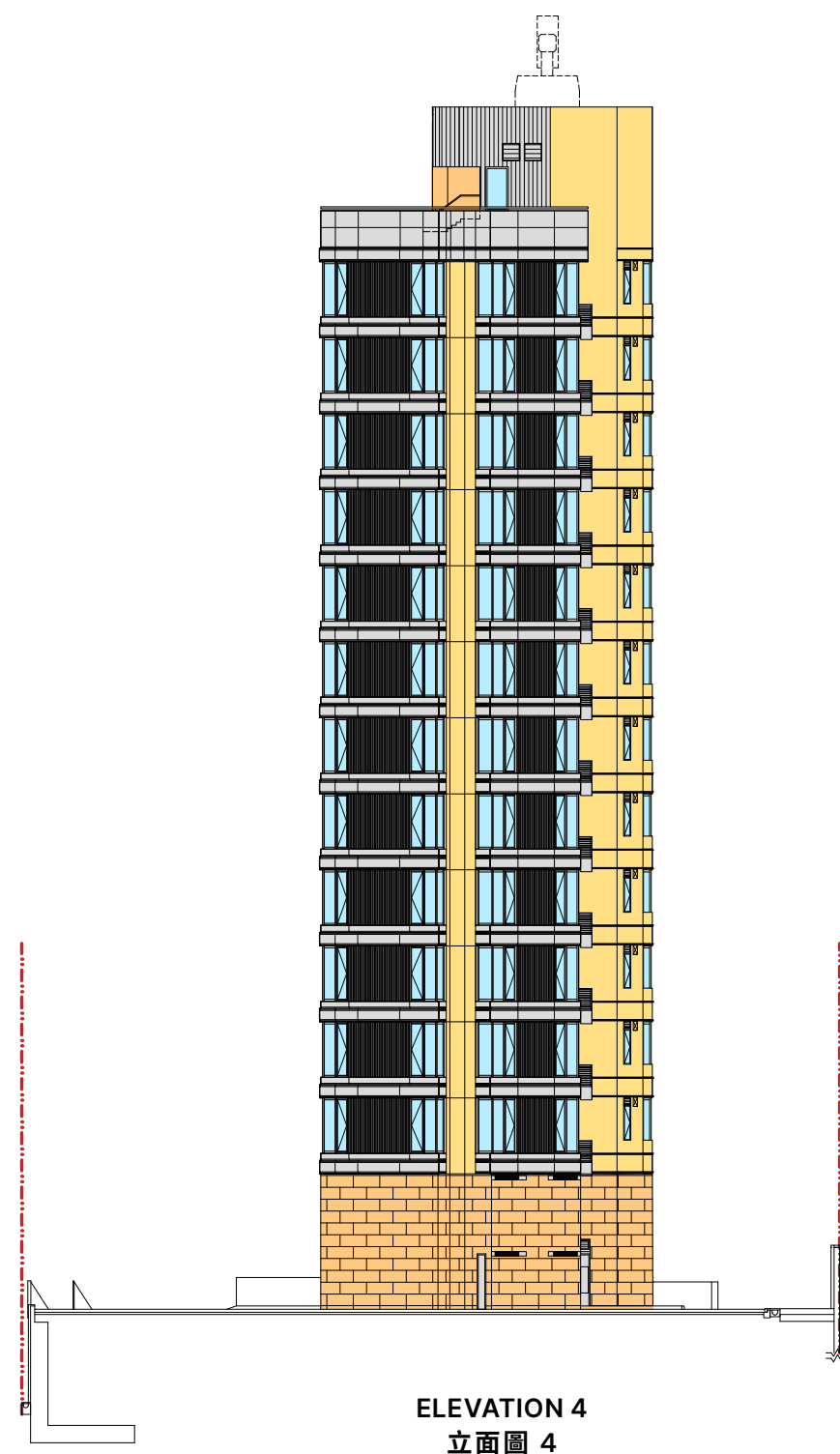
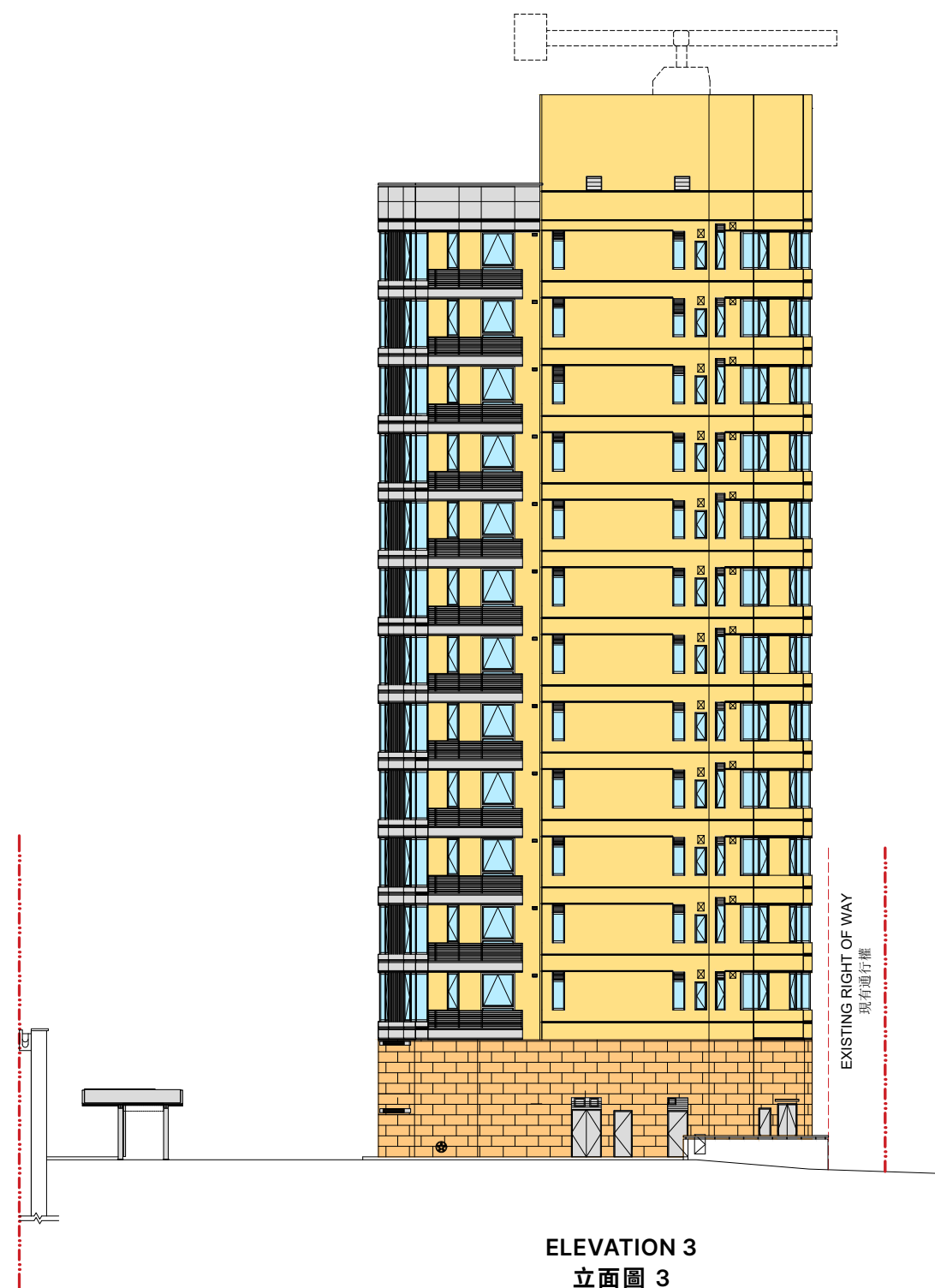
This part of Development has been altered by way of alteration and addition works, minor works, designated exempted works, or exempted works under the Buildings Ordinance after completion of the Development, the latest condition of which is shown on the relevant latest elevation. The relevant alteration(s) are as follows:

1. External cladding has been installed.

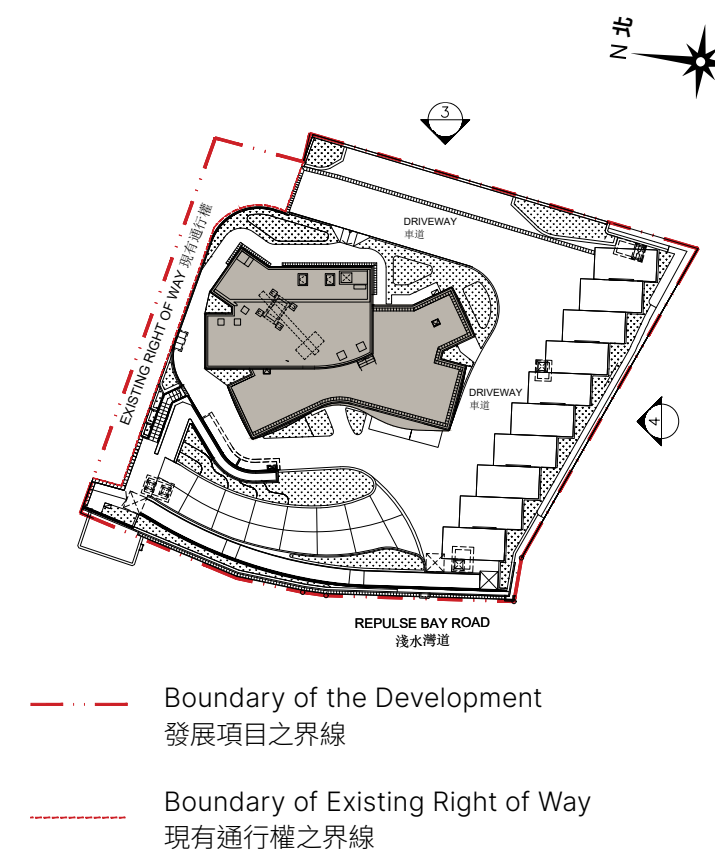
此部份因在發展項目落成後進行改動及加建工程、小型工程、指定豁免工程或獲《建築物條例》豁免的工程而有所改動，現狀請參閱有關現狀立面圖。該等改動如下：

1. 新增外牆飾面。

ELEVATION PLAN 立面圖



BLOCK PLAN 座向圖



It has been certified by the Authorized Person for the Development that the above elevations:

- (a) are prepared on the basis of the approved building plans for the Development as of 10 April 2025; and
- (b) are in general accordance with the outward appearance of the Development.

發展項目的認可人士已經證明該等立面：

- (a) 以 2025 年 4 月 10 日的情況為準的發展項目的經批准的建築圖則為基礎擬備；及
- (b) 大致上與發展項目的外觀一致。