

FLOOR PLANS OF RESIDENTIAL PROPERTIES IN THE DEVELOPMENT

發展項目的住宅物業的樓面平面圖

LEGEND OF TERMS AND ABBREVIATIONS USED ON FLOOR PLANS:
樓面平面圖中所使用名詞及簡稱之圖例：

A/C PLATFORM	=	AIR-CONDITIONING PLATFORM 冷氣機平台
BAL.1	=	BALCONY 1 露台1
BAL.2	=	BALCONY 2 露台2
BATH 1	=	BATHROOM 1 浴室1
BATH 2	=	BATHROOM 2 浴室2
BATH 3	=	BATHROOM 3 浴室3
BATH 5	=	BATHROOM 5 浴室5
BR 1	=	BEDROOM 1 睡房1
BR 2	=	BEDROOM 2 睡房2
BUILDING LINE ABOVE	=	BUILDING LINE ABOVE 建築物界線置上
CLOSET	=	CLOSET 衣帽間
DIN.	=	DINING ROOM 飯廳
DN	=	DOWN 下
E.M.C.	=	ELECTRICAL METER CABINET 電錶櫃
EMERGENCY GENERATOR RM.	=	EMERGENCY GENERATOR ROOM 緊急發電機房
F.S. PUMP & TANK RM.	=	FIRE SERVICES PUMP & TANK ROOM 消防泵及水缸房
F.S. WATER TANK	=	FIRE SERVICES WATER TANK 消防水缸
FAMILY ROOM	=	FAMILY ROOM 家庭房
FH	=	FIRE HYDRANT 消防栓
FLAT ROOF (PRIVATE)	=	FLAT ROOF (PRIVATE) 平台 (私人)
H.R.	=	HOSE REEL 消防喉轆
H.R. AT H/L	=	HOSE REEL AT HIGH LEVEL 高位消防喉轆
INACCESSIBLE	=	INACCESSIBLE 不可進入
KIT.	=	KITCHEN 廚房
L1	=	LIFT 1 升降機1
L2	=	LIFT 2 升降機2
LIFT CONTROL BOX	=	LIFT CONTROL BOX 升降機控制廂
LIFT LOBBY	=	LIFT LOBBY 升降機大堂
LIFT OVER RUN	=	LIFT OVER RUN 升降機緩衝
LIFT SHAFT	=	LIFT SHAFT 升降機槽
LIFT VENT DUCT	=	LIFT VENT DUCT 升降機通風槽

FLOOR PLANS OF RESIDENTIAL PROPERTIES IN THE DEVELOPMENT

發展項目的住宅物業的樓面平面圖

LEGEND OF TERMS AND ABBREVIATIONS USED ON FLOOR PLANS:
樓面平面圖中所使用名詞及簡稱之圖例：

LIV.	=	LIVING ROOM 客廳
LOBBY	=	LOBBY 大堂
MASTER BATHROOM	=	MASTER BATHROOM 主人浴室
MBR	=	MASTER BEDROOM 主人睡房
P.D.	=	PIPE DUCT 管道
POTABLE & FLUSHING PUMP & TANK RM. 1	=	POTABLE AND FLUSHING PUMP AND TANK ROOM 1 食水及沖廁水缸房1
POTABLE & FLUSHING PUMP & TANK RM. 2	=	POTABLE AND FLUSHING PUMP AND TANK ROOM 2 食水及沖廁水缸房2
R.S. & M.R.R.	=	REFUSE STORAGE & MATERIAL RECOVERY ROOM 垃圾及物料回收室
SINK	=	SINK 洗滌盆
STUDY	=	STUDY 書房
T.B.E. RM. 2	=	TELE-COMMUNICATIONS AND BROADCASTING ROOM 2 電訊及廣播房2
T.R.S	=	TEMPORARY REFUGE SPACE 臨時庇護處
UP	=	UP 上
UTILITY ROOM	=	UTILITY ROOM 工作間
W.M.C.	=	WATER METER CABINET 水錶櫃

Notes:

- There are architectural features and/ or exposed pipes on the external walls of some of the residential properties.
- Common pipes exposed and/or enclosed in cladding are located at / adjacent to the balcony and/or flat roof and/or air-conditioning platform and/or external walls of some of the residential properties.
- There are sunken slab and/ or false ceiling and/ or wall furring for mechanical & electrical services and/or air conditioning fittings at some of the residential properties.
- The internal ceiling height within some of the residential properties may vary due to structural, architectural and/ or decoration design variations.
- Air-conditioning platforms and balconies are non-enclosed areas.
- Symbols of fittings and fitments shown on the floor plans, such as sink, water closets, shower cubicles, sink counter, etc., are architectural symbols extracted from the latest approved buildings plans and are for general indication only.

備註：

- 部分住宅物業外牆範圍設有建築裝飾及/或外露喉管。
- 部分住宅物業的露台及/或平台及/或冷氣機平台及/或外牆上/附近設有外露及/或外牆裝飾板內藏之公用喉管。
- 部分住宅物業的天花有跌級樓板及/或假天花及/或裝飾牆身內裝置機電設備及空調設備。
- 部分住宅物業之室內天花高度將會因應結構、建築及/或裝修設計上的需要而有差異。
- 冷氣機平台及露台為非封閉的地方。
- 樓面平面圖上所顯示的裝置符號，如洗滌盆、座廁、淋浴間、洗滌盆櫃等乃按最新的經批准建築圖則繪製，只作一般性標示。

FLOOR PLANS OF RESIDENTIAL PROPERTIES IN THE DEVELOPMENT

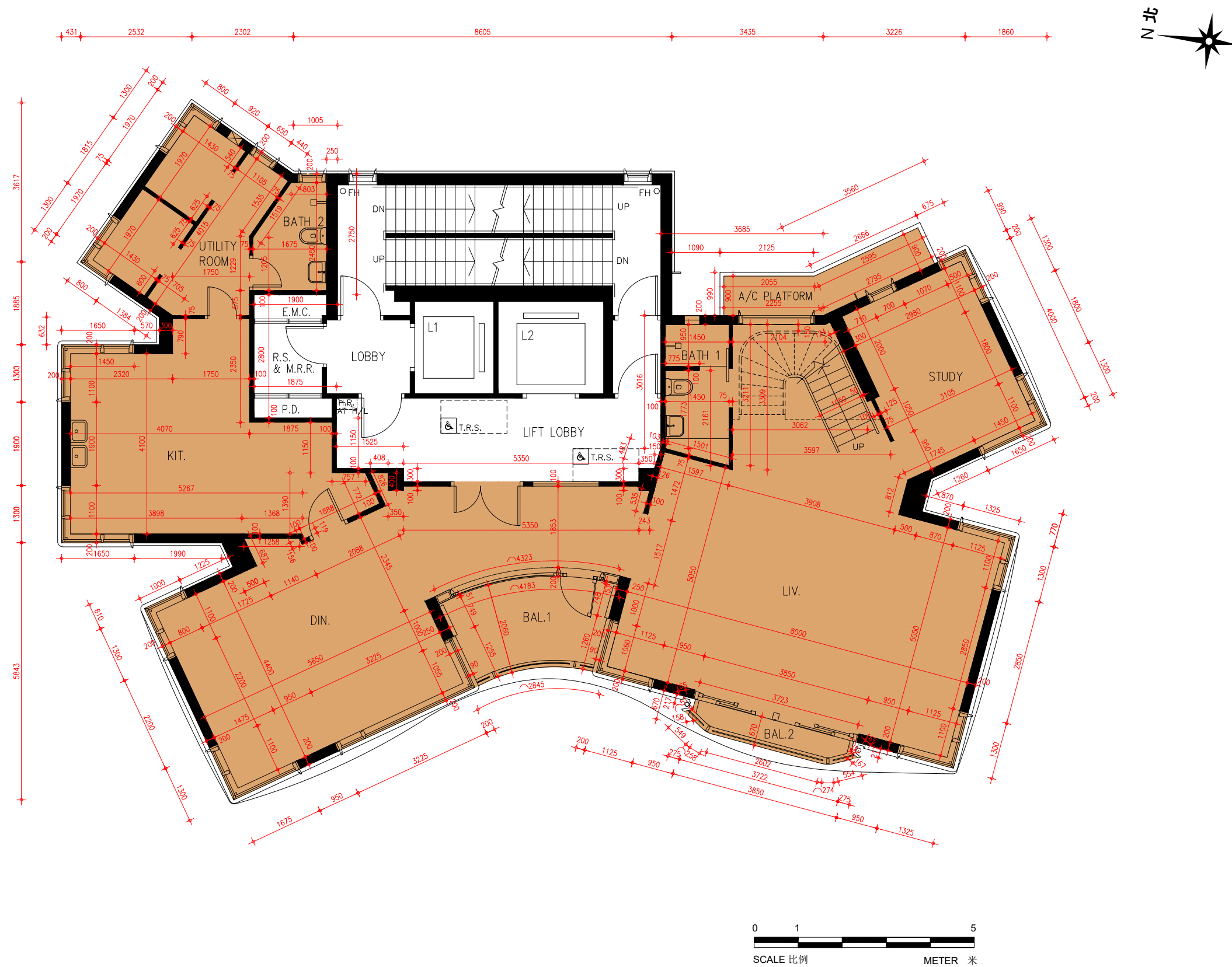
發展項目的住宅物業的樓面平面圖

DUPLEX FLAT on 1/F & 2/F -

1/F FLOOR PLAN

一樓及二樓複式單位 -

一樓平面圖



FLOOR PLANS OF RESIDENTIAL PROPERTIES IN THE DEVELOPMENT

發展項目的住宅物業的樓面平面圖

FLOOR 樓層	FLAT 單位	THE THICKNESS OF THE FLOOR SLABS (EXCLUDING PLASTER) OF EACH RESIDENTIAL PROPERTY (MM) 每個住宅物業的樓板（不包括灰泥）的厚度（毫米）	THE FLOOR-TO-FLOOR HEIGHT OF EACH RESIDENTIAL PROPERTY (MM) 每個住宅物業的層與層之間的高度（毫米）
1/F 一樓	DUPLEX FLAT 複式單位	150, 200, 1600, 1750 (Transfer Plate 轉換層)	3500

The internal areas of the residential properties on the upper floors will generally be slightly larger than those on the lower floors because of the reducing thickness of the structural walls on the upper floors.

因住宅物業的較高樓層的結構牆的厚度遞減，較高樓層的內部面積，一般比較低樓層的內部面積稍大。

- Notes:**
- 1. The dimensions in the floor plans are all structural dimensions in millimetre.
 - 2. Please refer to pages 20-21 of this sales brochure for legend of the terms and abbreviations in studying the floor plans of residential properties in the Development.
 - 3. The floor-to-floor height refers to the height between the top surface of the structural slab of a floor and the top surface of the structural slab of its immediate upper floor of each residential property.

- 備註：**
- 1. 樓面平面圖之尺規所列數字為以毫米標示之建築結構尺寸。
 - 2. 請參閱本售樓說明書第20-21頁之圖例以協助閱讀此部分的發展項目的住宅物業的樓面平面圖及其顯示之名稱和簡稱。
 - 3. 每個住宅物業的層與層之間的高度指該層之石屎地台面與上一層石屎地台之高度距離。

FLOOR PLANS OF RESIDENTIAL PROPERTIES IN THE DEVELOPMENT

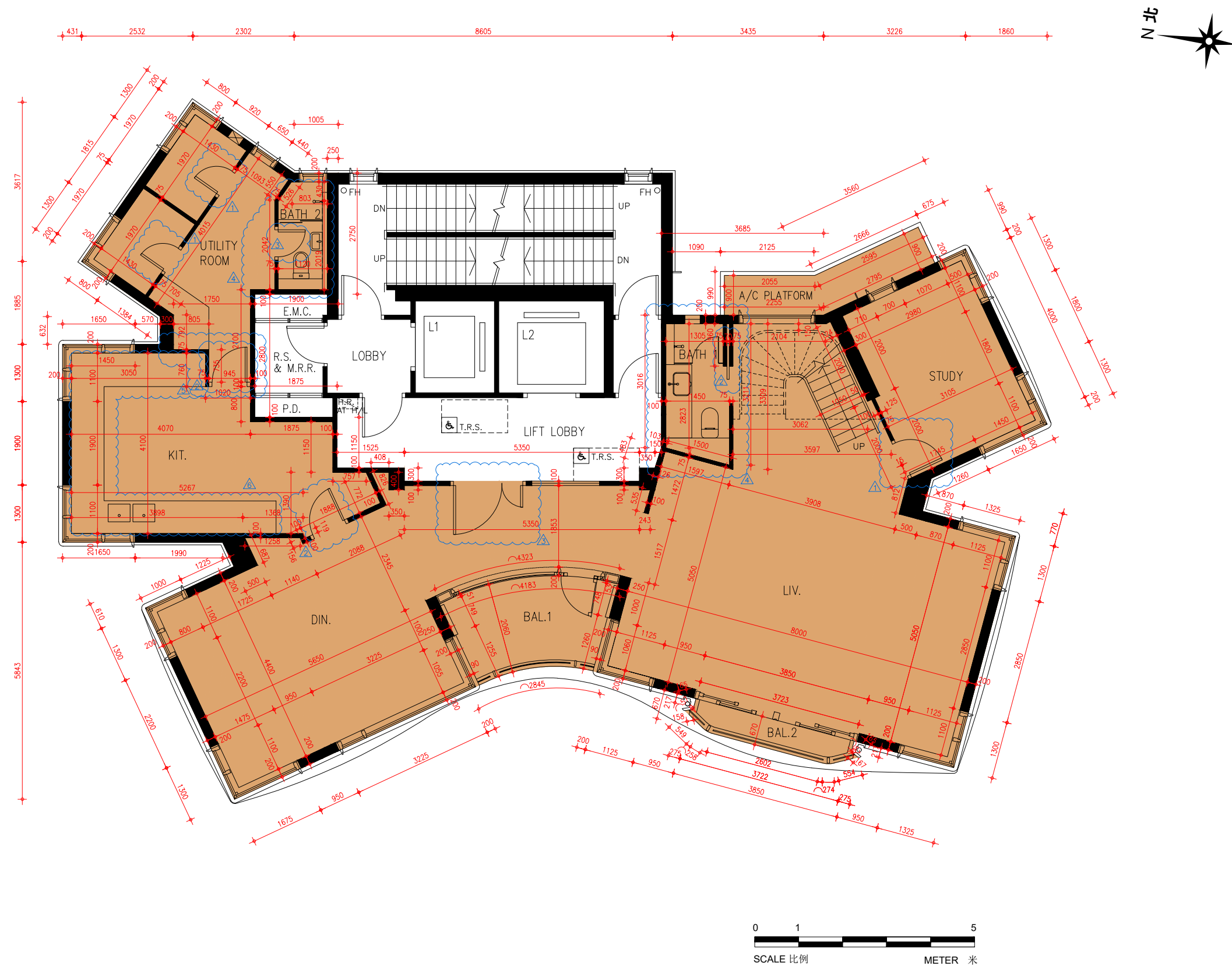
發展項目的住宅物業的樓面平面圖

DUPLEX FLAT on 1/F & 2/F -

1/F FLOOR PLAN (AS-IS FLOOR PLAN)

一樓及二樓複式單位 -

一樓平面圖 (現狀樓面平面圖)



FLOOR PLANS OF RESIDENTIAL PROPERTIES IN THE DEVELOPMENT

發展項目的住宅物業的樓面平面圖

Notes:

This part of 1/F has been altered by way of alteration and addition works, minor works, designated exempted works, or exempted works under the Buildings Ordinance after completion of the Development, the latest condition of which is shown on the relevant as-is floor plan. The alteration works are as follows:

- 1. Additional doors at Utility Room and Study.
- 2. Doors have been replaced with door finishes changed.
- 3. Doors have been replaced with door swing direction and finishes changed.
- 4. Layout of bathroom and positions of wash basin and water closet to be amended; model of wash basin, water closet and shower head to be changed in Bathroom 1 and Bathroom 2.
- 5. Demolition and erection of walls of Kitchen.
- 6. Position of sink has been amended; model of sink has been changed; installation of kitchen cabinet.

備註：

1 樓此部份因在發展項目落成後進行改動及加建工程、小型工程、指定豁免工程或獲《建築物條例》豁免的工程而有所改動，現狀請參閱有關現狀樓面平面圖。該等改動如下：

- 1. 在工作間和書房新增門。
- 2. 更換門，並改動門的飾面。
- 3. 更換門，並改動門的開門方向及飾面。
- 4. 浴室 1 和浴室 2 的佈局及洗手盆及坐廁的位置改動；洗手盆、坐廁和花灑頭的型號改動。
- 5. 拆除並安裝廚房的新牆壁。
- 6. 洗滌盤的位置改動；洗滌盤的型號改動；廚櫃安裝。

Notes:

- 1. The dimensions in the floor plans are all structural dimensions in millimetre.
- 2. Please refer to pages 20-21 of this sales brochure for legend of the terms and abbreviations in studying the floor plans of residential properties in the Development.
- 3. The floor-to-floor height refers to the height between the top surface of the structural slab of a floor and the top surface of the structural slab of its immediate upper floor of each residential property.

備註：

- 1. 樓面平面圖之尺規所列數字為以毫米標示之建築結構尺寸。
- 2. 請參閱本售樓說明書第20-21頁之圖例以協助閱讀此部分的發展項目的住宅物業的樓面平面圖及其顯示之名稱和簡稱。
- 3. 每個住宅物業的層與層之間的高度指該層之石屎地台面與上一層石屎地台之高度距離。

FLOOR PLANS OF RESIDENTIAL PROPERTIES IN THE DEVELOPMENT

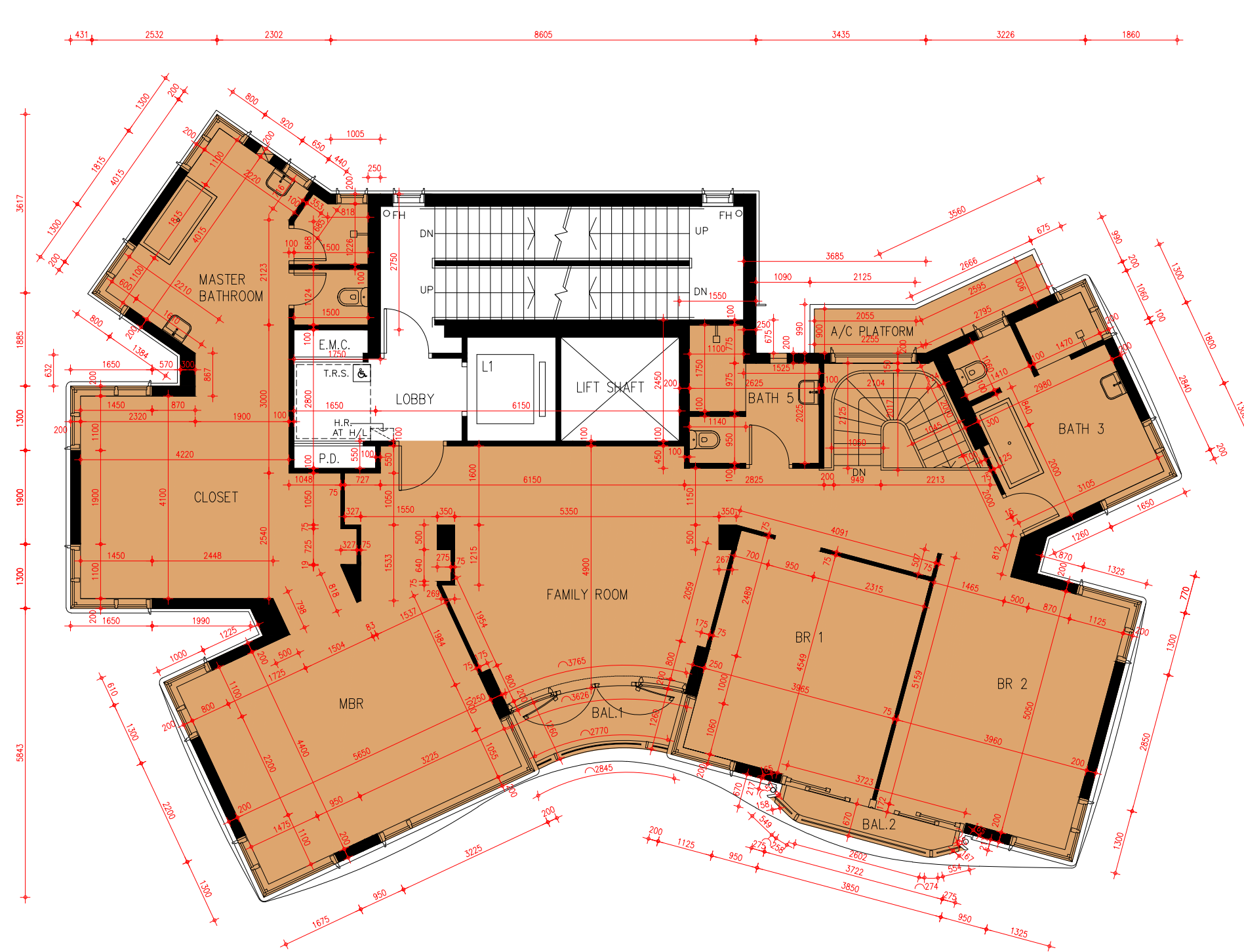
發展項目的住宅物業的樓面平面圖

DUPLEX FLAT on 1/F & 2/F -

2/F FLOOR PLAN

一樓及二樓複式單位 -

二樓平面圖



0 1 5
SCALE 比例 METER 米

FLOOR PLANS OF RESIDENTIAL PROPERTIES IN THE DEVELOPMENT

發展項目的住宅物業的樓面平面圖

FLOOR 樓層	FLAT 單位	THE THICKNESS OF THE FLOOR SLABS (EXCLUDING PLASTER) OF EACH RESIDENTIAL PROPERTY (MM) 每個住宅物業的樓板（不包括灰泥）的厚度（毫米）	THE FLOOR-TO-FLOOR HEIGHT OF EACH RESIDENTIAL PROPERTY (MM) 每個住宅物業的層與層之間的高度（毫米）
2/F 二樓	DUPLEX FLAT 複式單位	150, 200	3500

The internal areas of the residential properties on the upper floors will generally be slightly larger than those on the lower floors because of the reducing thickness of the structural walls on the upper floors.

因住宅物業的較高樓層的結構牆的厚度遞減，較高樓層的內部面積，一般比較低樓層的內部面積稍大。

- Notes:**
- 1. The dimensions in the floor plans are all structural dimensions in millimetre.
 - 2. Please refer to pages 20-21 of this sales brochure for legend of the terms and abbreviations in studying the floor plans of residential properties in the Development.
 - 3. The floor-to-floor height refers to the height between the top surface of the structural slab of a floor and the top surface of the structural slab of its immediate upper floor of each residential property.

- 備註：**
- 1. 樓面平面圖之尺規所列數字為以毫米標示之建築結構尺寸。
 - 2. 請參閱本售樓說明書第20-21頁之圖例以協助閱讀此部分的發展項目的住宅物業的樓面平面圖及其顯示之名稱和簡稱。
 - 3. 每個住宅物業的層與層之間的高度指該層之石屎地台面與上一層石屎地台之高度距離。

FLOOR PLANS OF RESIDENTIAL PROPERTIES IN THE DEVELOPMENT

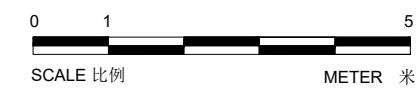
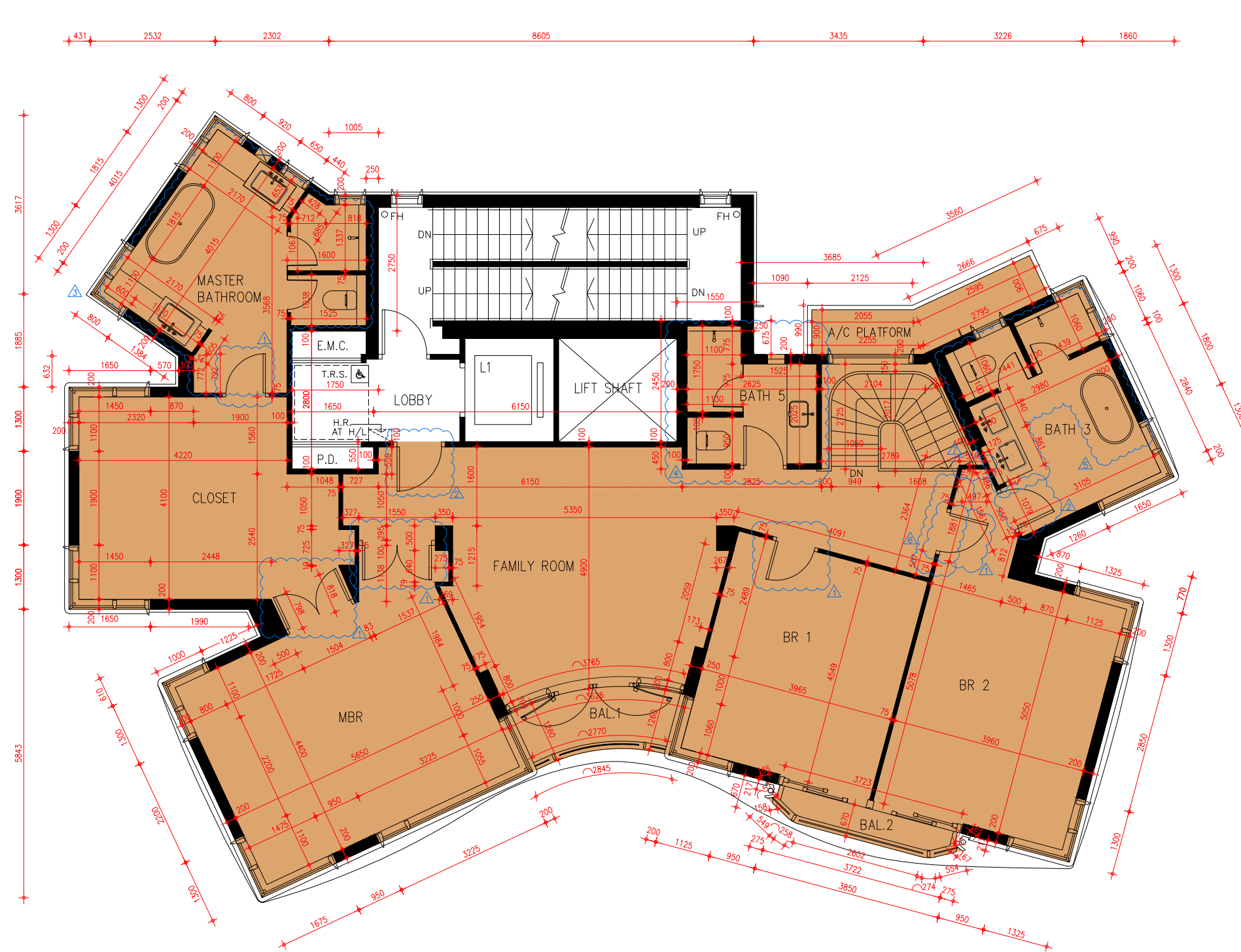
發展項目的住宅物業的樓面平面圖

DUPLEX FLAT on 1/F & 2/F -

2/F FLOOR PLAN (AS-IS FLOOR PLAN)

一樓及二樓複式單位 -

二樓平面圖 (現狀樓面平面圖)



FLOOR PLANS OF RESIDENTIAL PROPERTIES IN THE DEVELOPMENT

發展項目的住宅物業的樓面平面圖

Notes:

This part of 2/F has been altered by way of alteration and addition works, minor works, designated exempted works, or exempted works under the Buildings Ordinance after completion of the Development, the latest condition of which is shown on the relevant as-is floor plan. The alteration works are as follows:

- 1. Additional door at Bedroom 1, Bedroom 2, Master Bedroom, Closet and Master Bathroom.
- 2. Doors has been replaced with door finishes changed.
- 3. Layout of bathroom and positions of wash basin and water closet have been amended; model of wash basin, water closet, bathtub and shower head have been changed in Master Bedroom.
- 4. Positions of wash basin and water closet have been amended; model of wash basin, water closet and shower head have been changed in Bathroom 5.
- 5. Positions of wash basin, shower head and bathtub have been amended; model of wash basin, water closet, bathtub and shower head have been changed in Bathroom 3.
- 6. Layout of Bedroom 2 has been amended.
- 7. Metal balustrade has been amended.

備註：

2樓此部份因在發展項目落成後進行改動及加建工程、小型工程、指定豁免工程或獲《建築物條例》豁免的工程而有所改動，現狀請參閱有關現狀樓面平面圖。該等改動如下：

- 1. 在睡房 1、睡房 2、主人睡房、衣帽間及主人浴室新增門。
- 2. 更換門，並改動門的飾面。
- 3. 主人浴室的佈局及洗手盆、坐廁的位置改動；洗手盆、坐廁、浴缸和花灑頭的型號改動。
- 4. 浴室 5 的洗手盆和坐廁的位置改動；洗手盆、坐廁和花灑頭的型號改動。
- 5. 浴室 3 的洗手盆、花灑頭和浴缸的位置改動；洗手盆、坐廁、浴缸和花灑頭的型號改動。
- 6. 睡房 2 的佈局改動。
- 7. 金屬欄杆改動。

Notes:

- 1. The dimensions in the floor plans are all structural dimensions in millimetre.
- 2. Please refer to pages 20-21 of this sales brochure for legend of the terms and abbreviations in studying the floor plans of residential properties in the Development.
- 3. The floor-to-floor height refers to the height between the top surface of the structural slab of a floor and the top surface of the structural slab of its immediate upper floor of each residential property.

備註：

- 1. 樓面平面圖之尺規所列數字為以毫米標示之建築結構尺寸。
- 2. 請參閱本售樓說明書第20-21頁之圖例以協助閱讀此部分的發展項目的住宅物業的樓面平面圖及其顯示之名稱和簡稱。
- 3. 每個住宅物業的層與層之間的高度指該層之石屎地台面與上一層石屎地台之高度距離。

FLOOR PLANS OF RESIDENTIAL PROPERTIES IN THE DEVELOPMENT

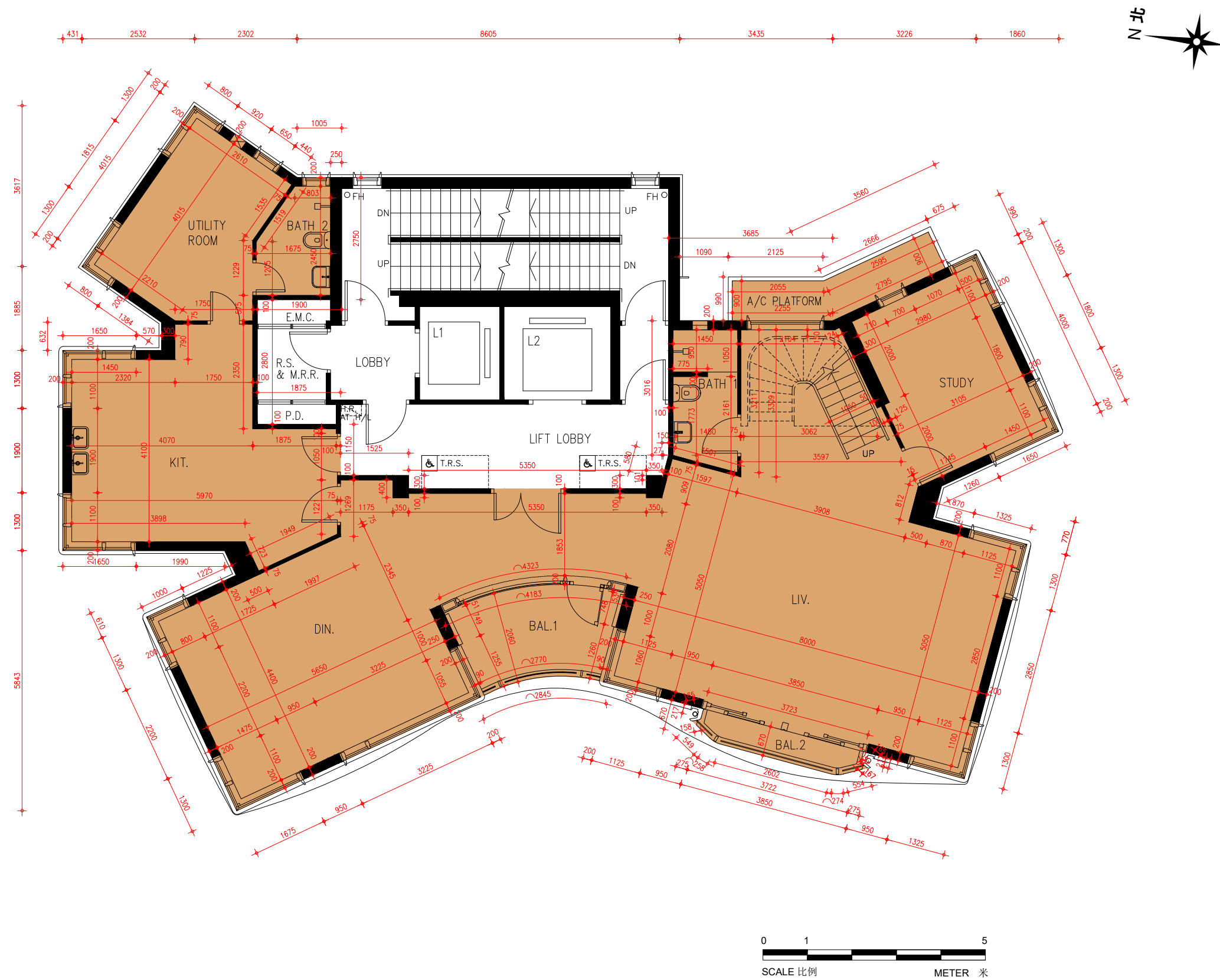
發展項目的住宅物業的樓面平面圖

DUPLEX FLAT

3/F, 6/F, 8/F, 10/F FLOOR PLAN

複式單位

三樓、六樓、八樓、十樓平面圖



FLOOR PLANS OF RESIDENTIAL PROPERTIES IN THE DEVELOPMENT

發展項目的住宅物業的樓面平面圖

FLOOR 樓層	FLAT 單位	THE THICKNESS OF THE FLOOR SLABS (EXCLUDING PLASTER) OF EACH RESIDENTIAL PROPERTY (MM) 每個住宅物業的樓板（不包括灰泥）的厚度（毫米）	THE FLOOR-TO-FLOOR HEIGHT OF EACH RESIDENTIAL PROPERTY (MM) 每個住宅物業的層與層之間的高度（毫米）
3/F, 6/F, 8/F, 10/F 三樓、六樓、八樓、 十樓	DUPLEX FLAT 複式單位	150, 200	3500

The internal areas of the residential properties on the upper floors will generally be slightly larger than those on the lower floors because of the reducing thickness of the structural walls on the upper floors.

因住宅物業的較高樓層的結構牆的厚度遞減，較高樓層的內部面積，一般比較低樓層的內部面積稍大。

- Notes:**
- 1. The dimensions in the floor plans are all structural dimensions in millimetre.
 - 2. Please refer to pages 20-21 of this sales brochure for legend of the terms and abbreviations in studying the floor plans of residential properties in the Development.
 - 3. The floor-to-floor height refers to the height between the top surface of the structural slab of a floor and the top surface of the structural slab of its immediate upper floor of each residential property.

- 備註：**
- 1. 樓面平面圖之尺規所列數字為以毫米標示之建築結構尺寸。
 - 2. 請參閱本售樓說明書第20-21頁之圖例以協助閱讀此部分的發展項目的住宅物業的樓面平面圖及其顯示之名稱和簡稱。
 - 3. 每個住宅物業的層與層之間的高度指該層之石屎地台面與上一層石屎地台之高度距離。

FLOOR PLANS OF RESIDENTIAL PROPERTIES IN THE DEVELOPMENT

發展項目的住宅物業的樓面平面圖

DUPLEX FLAT

5/F, 7/F, 9/F, 11/F FLOOR PLAN

複式單位

五樓、七樓、九樓、十一樓平面圖



FLOOR PLANS OF RESIDENTIAL PROPERTIES IN THE DEVELOPMENT

發展項目的住宅物業的樓面平面圖

FLOOR 樓層	FLAT 單位	THE THICKNESS OF THE FLOOR SLABS (EXCLUDING PLASTER) OF EACH RESIDENTIAL PROPERTY (MM) 每個住宅物業的樓板（不包括灰泥）的厚度（毫米）	THE FLOOR-TO-FLOOR HEIGHT OF EACH RESIDENTIAL PROPERTY (MM) 每個住宅物業的層與層之間的高度（毫米）
5/F, 7/F, 9/F, 11/F 五樓、七樓、九樓、 十一樓	DUPLEX FLAT 複式單位	150, 200	3500

The internal areas of the residential properties on the upper floors will generally be slightly larger than those on the lower floors because of the reducing thickness of the structural walls on the upper floors.

因住宅物業的較高樓層的結構牆的厚度遞減，較高樓層的內部面積，一般比較低樓層的內部面積稍大。

- Notes:**
- 1. The dimensions in the floor plans are all structural dimensions in millimetre.
 - 2. Please refer to pages 20-21 of this sales brochure for legend of the terms and abbreviations in studying the floor plans of residential properties in the Development.
 - 3. The floor-to-floor height refers to the height between the top surface of the structural slab of a floor and the top surface of the structural slab of its immediate upper floor of each residential property.

- 備註：**
- 1. 樓面平面圖之尺規所列數字為以毫米標示之建築結構尺寸。
 - 2. 請參閱本售樓說明書第20-21頁之圖例以協助閱讀此部分的發展項目的住宅物業的樓面平面圖及其顯示之名稱和簡稱。
 - 3. 每個住宅物業的層與層之間的高度指該層之石屎地台面與上一層石屎地台之高度距離。

FLOOR PLANS OF RESIDENTIAL PROPERTIES IN THE DEVELOPMENT

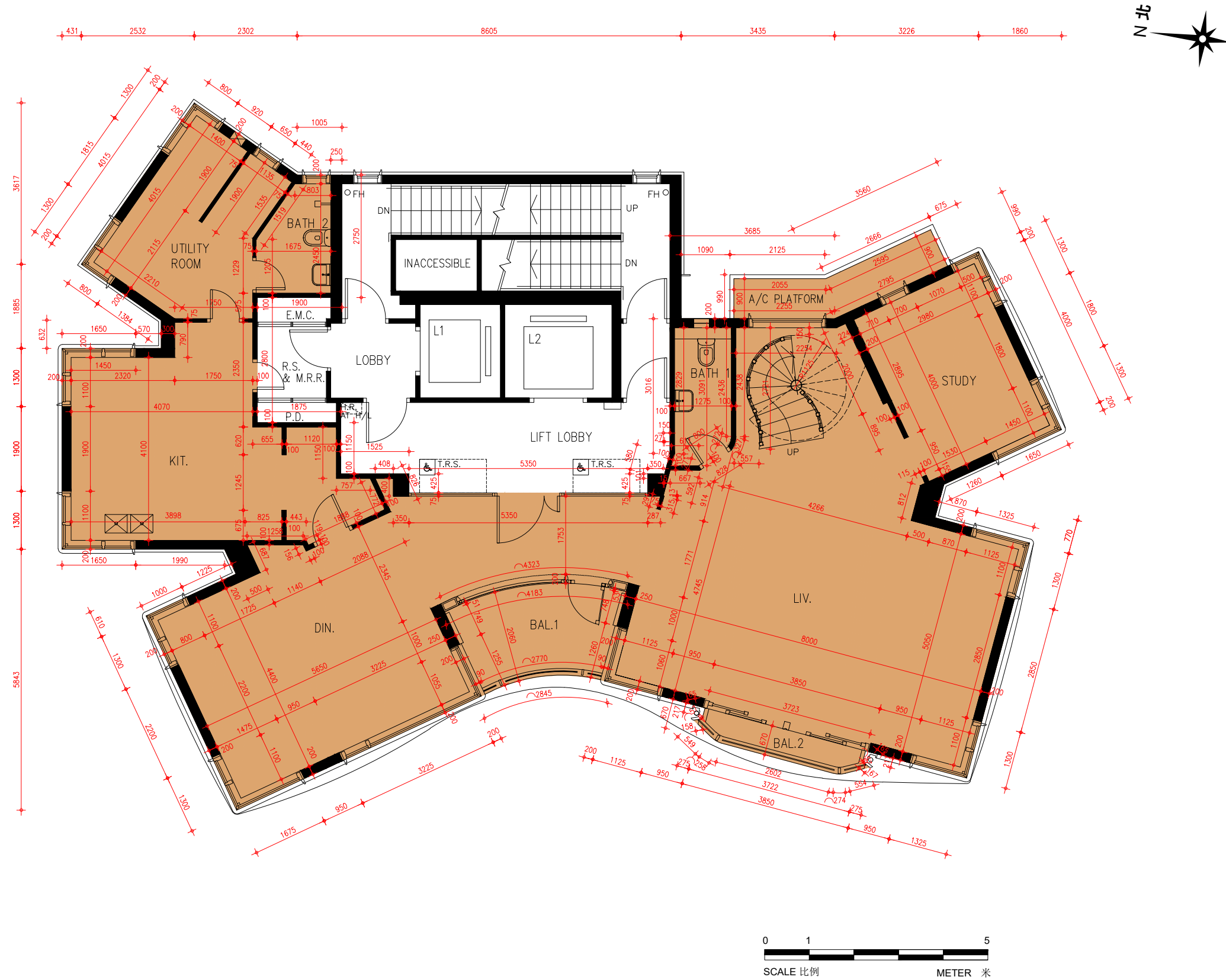
發展項目的住宅物業的樓面平面圖

DUPLEX FLAT ON 12TH PENTHOUSE FLOOR & 13TH PENTHOUSE FLOOR

12TH PENTHOUSE FLOOR PLAN

頂層十二樓及頂層十三樓複式單位

頂層十二樓樓面平面圖



FLOOR PLANS OF RESIDENTIAL PROPERTIES IN THE DEVELOPMENT

發展項目的住宅物業的樓面平面圖

FLOOR 樓層	FLAT 單位	THE THICKNESS OF THE FLOOR SLABS (EXCLUDING PLASTER) OF EACH RESIDENTIAL PROPERTY (MM) 每個住宅物業的樓板（不包括灰泥）的厚度（毫米）	THE FLOOR-TO-FLOOR HEIGHT OF EACH RESIDENTIAL PROPERTY (MM) 每個住宅物業的層與層之間的高度（毫米）
12TH PENTHOUSE FLOOR 頂層十二樓	DUPLEX FLAT 複式單位	150, 200	3500

The internal areas of the residential properties on the upper floors will generally be slightly larger than those on the lower floors because of the reducing thickness of the structural walls on the upper floors.

因住宅物業的較高樓層的結構牆的厚度遞減，較高樓層的內部面積，一般比較低樓層的內部面積稍大。

- Notes:**
- 1. The dimensions in the floor plans are all structural dimensions in millimetre.
 - 2. Please refer to pages 20-21 of this sales brochure for legend of the terms and abbreviations in studying the floor plans of residential properties in the Development.
 - 3. The floor-to-floor height refers to the height between the top surface of the structural slab of a floor and the top surface of the structural slab of its immediate upper floor of each residential property.

- 備註：**
- 1. 樓面平面圖之尺規所列數字為以毫米標示之建築結構尺寸。
 - 2. 請參閱本售樓說明書第20-21頁之圖例以協助閱讀此部分的發展項目的住宅物業的樓面平面圖及其顯示之名稱和簡稱。
 - 3. 每個住宅物業的層與層之間的高度指該層之石屎地台面與上一層石屎地台之高度距離。

FLOOR PLANS OF RESIDENTIAL PROPERTIES IN THE DEVELOPMENT

發展項目的住宅物業的樓面平面圖

DUPLEX FLAT ON 12TH PENTHOUSE FLOOR & 13TH PENTHOUSE FLOOR

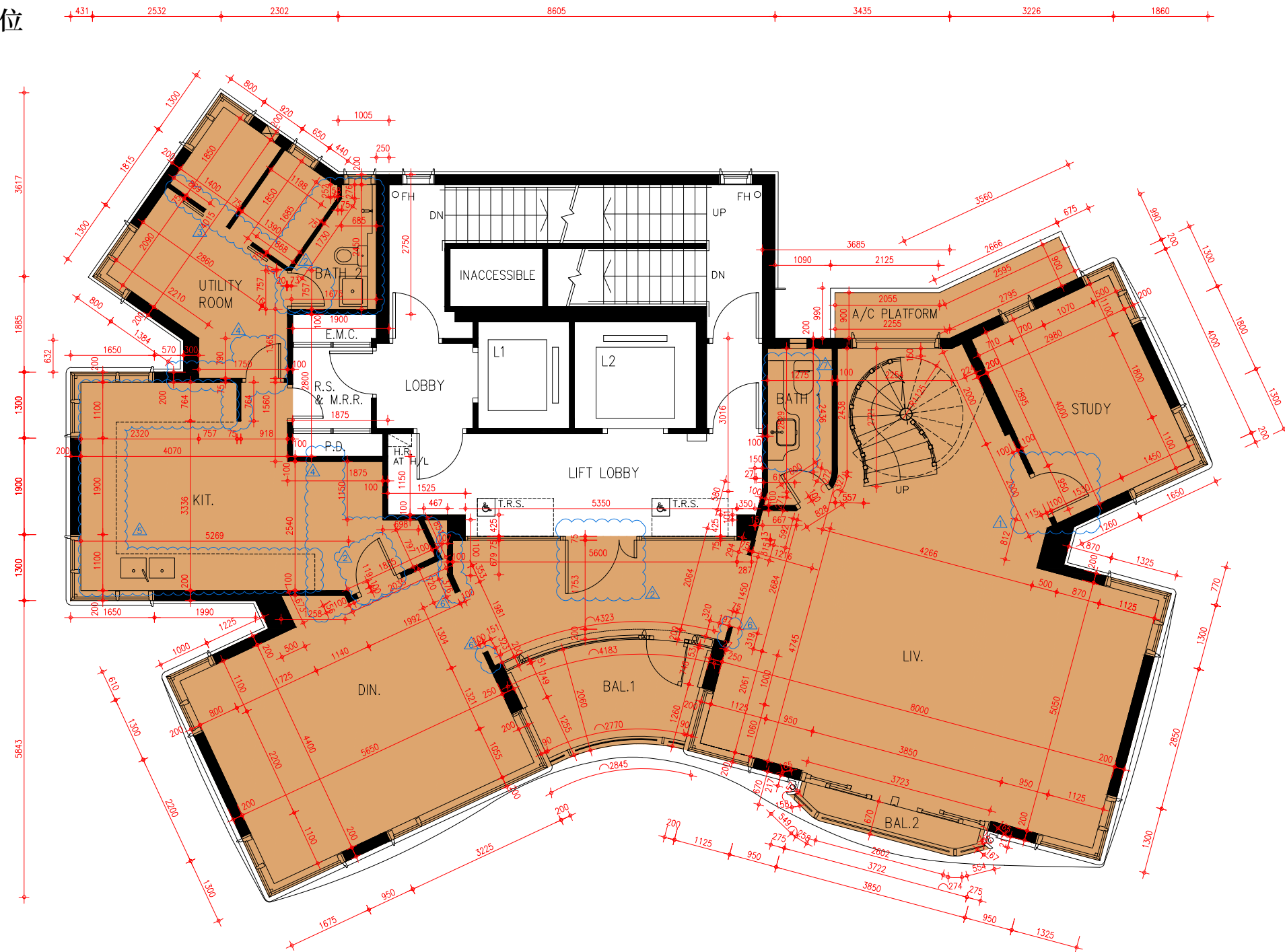
12TH PENTHOUSE FLOOR PLAN

(AS-IS FLOOR PLAN)

頂層十二樓及頂層十三樓複式單位

頂層十二樓樓面平面圖

(現狀樓面平面圖)



0 1 5
SCALE 比例 METER 米

FLOOR PLANS OF RESIDENTIAL PROPERTIES IN THE DEVELOPMENT

發展項目的住宅物業的樓面平面圖

Notes:

This part of 12th Floor Penthouse has been altered by way of alteration and addition works, minor works, designated exempted works, or exempted works under the Buildings Ordinance after completion of the Development, the latest condition of which is shown on the relevant as-is floor plan. The alteration works are as follows:

- 1. Additional door at Study.
- 2. Doors have been replaced with door finishes changed.
- 3. Layout of Utility Room and Bathroom 2 has been amended; positions of wash basin and water closet have been amended; model of wash basin, water closet, and shower head have been changed in Bathroom 2.
- 4. Layout of Kitchen has been amended.
- 5. Model of sink has been changed; installation of kitchen cabinet.
- 6. Additional block wall at Living Room and Dining Room.
- 7. Model of wash basin and water closet have been changed in Bathroom 1.

備註：

頂層十二樓此部份因在發展項目落成後進行改動及加建工程、小型工程、指定豁免工程或獲《建築物條例》豁免的工程而有所改動，現狀請參閱有關現狀樓面平面圖。該等改動如下：

- 1. 在書房新增門。
- 2. 更換門，並改動門的飾面。
- 3. 工作間和浴室2 的佈局改動；洗手盆和坐廁的位置改動；浴室 2 的洗手盆、坐廁和花灑頭的型號改動。
- 4. 廚房的佈局改動。
- 5. 洗滌盤的型號改動；廚櫃安裝。
- 6. 在客廳和飯廳新增磚牆。
- 7. 浴室 1 的洗手盆和坐廁的型號改動。

Notes:

- 1. The dimensions in the floor plans are all structural dimensions in millimetre.
- 2. Please refer to pages 20-21 of this sales brochure for legend of the terms and abbreviations in studying the floor plans of residential properties in the Development.
- 3. The floor-to-floor height refers to the height between the top surface of the structural slab of a floor and the top surface of the structural slab of its immediate upper floor of each residential property.

備註：

- 1. 樓面平面圖之尺規所列數字為以毫米標示之建築結構尺寸。
- 2. 請參閱本售樓說明書第20-21頁之圖例以協助閱讀此部分的發展項目的住宅物業的樓面平面圖及其顯示之名稱和簡稱。
- 3. 每個住宅物業的層與層之間的高度指該層之石屎地台面與上一層石屎地台之高度距離。

發展項目的住宅物業的樓面平面圖

13TH PENTHOUSE FLOOR PLAN

頂層十三樓樓面平面圖



FLOOR PLANS OF RESIDENTIAL PROPERTIES IN THE DEVELOPMENT

發展項目的住宅物業的樓面平面圖

FLOOR 樓層	FLAT 單位	THE THICKNESS OF THE FLOOR SLABS (EXCLUDING PLASTER) OF EACH RESIDENTIAL PROPERTY (MM) 每個住宅物業的樓板（不包括灰泥）的厚度（毫米）	THE FLOOR-TO-FLOOR HEIGHT OF EACH RESIDENTIAL PROPERTY (MM) 每個住宅物業的層與層之間的高度（毫米）
13TH PENTHOUSE FLOOR 頂層十三樓	DUPLEX FLAT 複式單位	150, 200	4000

The internal areas of the residential properties on the upper floors will generally be slightly larger than those on the lower floors because of the reducing thickness of the structural walls on the upper floors.

因住宅物業的較高樓層的結構牆的厚度遞減，較高樓層的內部面積，一般比較低樓層的內部面積稍大。

- Notes:**
- 1. The dimensions in the floor plans are all structural dimensions in millimetre.
 - 2. Please refer to pages 20-21 of this sales brochure for legend of the terms and abbreviations in studying the floor plans of residential properties in the Development.
 - 3. The floor-to-floor height refers to the height between the top surface of the structural slab of a floor and the top surface of the structural slab of its immediate upper floor of each residential property.

- 備註：**
- 1. 樓面平面圖之尺規所列數字為以毫米標示之建築結構尺寸。
 - 2. 請參閱本售樓說明書第20-21頁之圖例以協助閱讀此部分的發展項目的住宅物業的樓面平面圖及其顯示之名稱和簡稱。
 - 3. 每個住宅物業的層與層之間的高度指該層之石屎地台面與上一層石屎地台之高度距離。

FLOOR PLANS OF RESIDENTIAL PROPERTIES IN THE DEVELOPMENT

發展項目的住宅物業的樓面平面圖

DUPLEX FLAT ON 12TH PENTHOUSE FLOOR & 13TH PENTHOUSE FLOOR

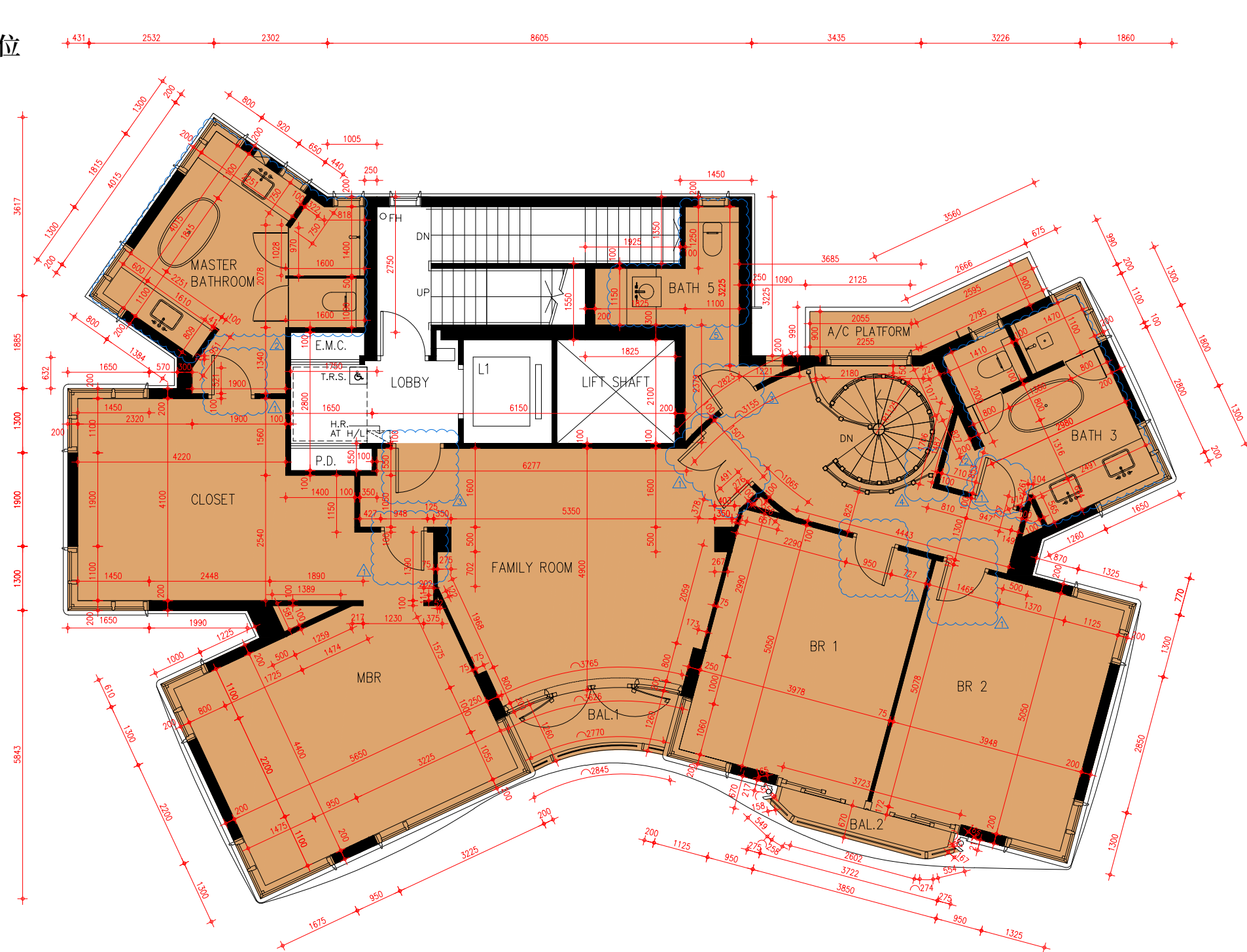
13TH PENTHOUSE FLOOR PLAN

(AS-IS FLOOR PLAN)

頂層十二樓及頂層十三樓複式單位

頂層十三樓樓面平面圖

(現狀樓面平面圖)



0 1 5
SCALE 比例 METER 米

FLOOR PLANS OF RESIDENTIAL PROPERTIES IN THE DEVELOPMENT

發展項目的住宅物業的樓面平面圖

Notes:

This part of 13th Floor Penthouse has been altered by way of alteration and addition works, minor works, designated exempted works, or exempted works under the Buildings Ordinance after completion of the Development, the latest condition of which is shown on the relevant as-is floor plan. The alteration works are as follows:

- 1. Additional door at Bedroom 1, Bedroom 2, Bathroom 3, Master Bathroom, Closet and Family Room.
- 2. Layout of Master Bathroom; positions of wash basin and bathtub have been amended and models of wash basin, water closet, bathtub and shower head have been changed in Bathroom 3 and Master Bathroom.
- 3. Doors have been replaced with door finishes changed.
- 4. Metal balustrade has been amended.
- 5. Position of wash basin has been changed; model of wash basin and water closet have been changed in Bathroom 5.

備註：

頂層十三樓此部份因在發展項目落成後進行改動及加建工程、小型工程、指定豁免工程或獲《建築物條例》豁免的工程而有所改動，現狀請參閱有關現狀樓面平面圖。該等改動如下：

- 1. 在睡房 1、睡房 2、浴室 3、主人浴室、衣帽間及家庭房新增門。
- 2. 主人浴室的佈局改動；浴室 3 和主人浴室的洗手盆及浴缸的位置改動; 洗手盆、坐廁、浴缸和花灑頭的型號改動。
- 3. 更換門，並改動門的飾面。
- 4. 金屬欄杆改動。
- 5. 浴室 5 的洗手盆位置改動；洗手盆和坐廁的型號改動。

Notes:

- 1. The dimensions in the floor plans are all structural dimensions in millimetre.
- 2. Please refer to pages 20-21 of this sales brochure for legend of the terms and abbreviations in studying the floor plans of residential properties in the Development.
- 3. The floor-to-floor height refers to the height between the top surface of the structural slab of a floor and the top surface of the structural slab of its immediate upper floor of each residential property.

備註：

- 1. 樓面平面圖之尺規所列數字為以毫米標示之建築結構尺寸。
- 2. 請參閱本售樓說明書第20-21頁之圖例以協助閱讀此部分的發展項目的住宅物業的樓面平面圖及其顯示之名稱和簡稱。
- 3. 每個住宅物業的層與層之間的高度指該層之石屎地台面與上一層石屎地台之高度距離。

FLOOR PLANS OF RESIDENTIAL PROPERTIES IN THE DEVELOPMENT

發展項目的住宅物業的樓面平面圖

FLOOR 樓層	FLAT 單位	THE THICKNESS OF THE FLOOR SLABS (EXCLUDING PLASTER) OF EACH RESIDENTIAL PROPERTY (MM) 每個住宅物業的樓板（不包括灰泥）的厚度（毫米）	THE FLOOR-TO-FLOOR HEIGHT OF EACH RESIDENTIAL PROPERTY (MM) 每個住宅物業的層與層之間的高度（毫米）
MAIN ROOF 天台	DUPLEX FLAT 複式單位	200, 250	4750

The internal areas of the residential properties on the upper floors will generally be slightly larger than those on the lower floors because of the reducing thickness of the structural walls on the upper floors.

因住宅物業的較高樓層的結構牆的厚度遞減，較高樓層的內部面積，一般比較低樓層的內部面積稍大。

- Notes:**
- The dimensions in the floor plans are all structural dimensions in millimetre.
 - Please refer to pages 20-21 of this sales brochure for legend of the terms and abbreviations in studying the floor plans of residential properties in the Development.
 - The floor-to-floor height refers to the height between the top surface of the structural slab of a floor and the top surface of the structural slab of its immediate upper floor of each residential property.

- 備註：**
- 樓面平面圖之尺規所列數字為以毫米標示之建築結構尺寸。
 - 請參閱本售樓說明書第20-21頁之圖例以協助閱讀此部分的發展項目的住宅物業的樓面平面圖及其顯示之名稱和簡稱。
 - 每個住宅物業的層與層之間的高度指該層之石屎地台面與上一層石屎地台之高度距離。

FLOOR PLANS OF RESIDENTIAL PROPERTIES IN THE DEVELOPMENT

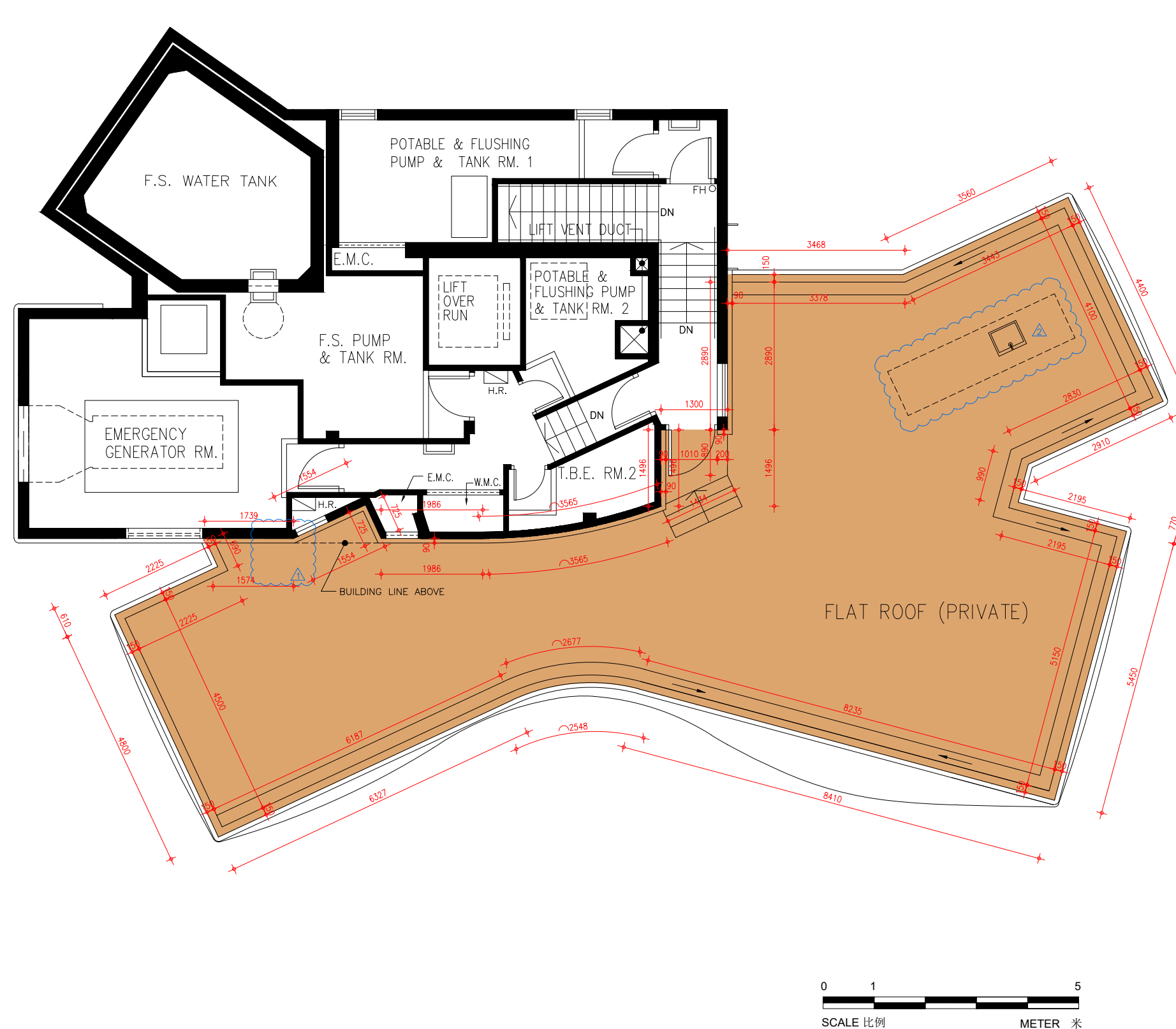
發展項目的住宅物業的樓面平面圖

MAIN ROOF FLOOR PLAN

(AS-IS FLOOR PLAN)

天台平面圖

(現狀樓面平面圖)



FLOOR PLANS OF RESIDENTIAL PROPERTIES IN THE DEVELOPMENT

發展項目的住宅物業的樓面平面圖

Notes:

This part of Main Roof Floor has been altered by way of alteration and addition works, minor works, designated exempted works, or exempted works under the Buildings Ordinance after completion of the Development, the latest condition of which is shown on the relevant as-is floor plan. The alteration works are as follows:

1. Sink has been omitted.
2. Model of sink has been changed and installation of kitchen cabinet.

備註：

天台此部份因在發展項目落成後進行改動及加建工程、小型工程、指定豁免工程或獲《建築物條例》豁免的工程而有所改動，現狀請參閱有關現狀樓面平面圖。該等改動如下：

1. 移除洗滌盤。
2. 更改洗滌盤的型號及廚櫃安裝。

Notes:

1. The dimensions in the floor plans are all structural dimensions in millimetre.
2. Please refer to pages 20-21 of this sales brochure for legend of the terms and abbreviations in studying the floor plans of residential properties in the Development.
3. The floor-to-floor height refers to the height between the top surface of the structural slab of a floor and the top surface of the structural slab of its immediate upper floor of each residential property.

備註：

1. 樓面平面圖之尺規所列數字為以毫米標示之建築結構尺寸。
2. 請參閱本售樓說明書第20-21頁之圖例以協助閱讀此部分的發展項目的住宅物業的樓面平面圖及其顯示之名稱和簡稱。
3. 每個住宅物業的層與層之間的高度指該層之石屎地台面與上一層石屎地台之高度距離。