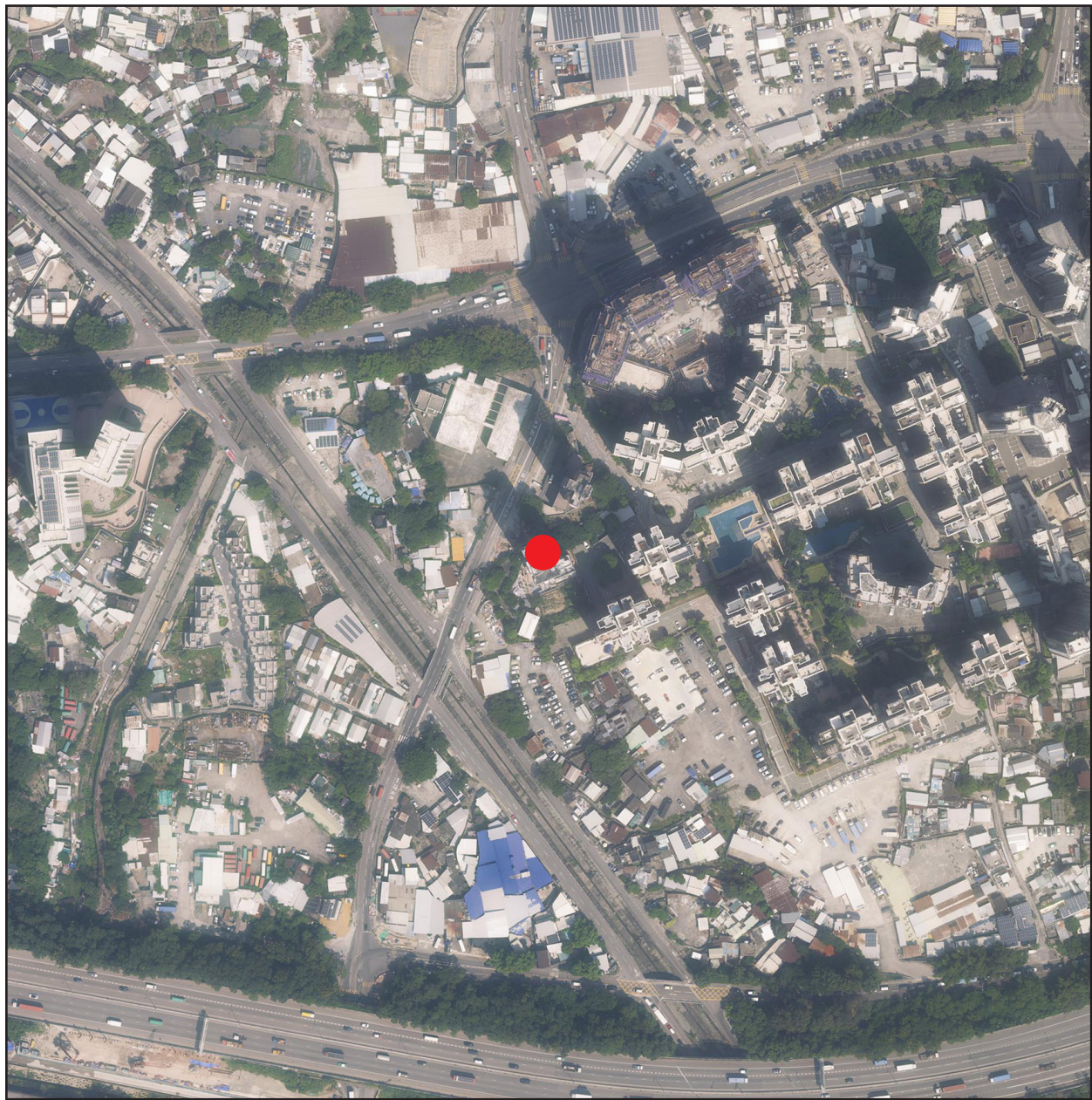


發展項目的鳥瞰照片
AERIAL PHOTOGRAPH OF THE DEVELOPMENT



● 發展項目的位置
Location of the Development



備註：

1. 摘錄自地政總署測繪處於2024年10月10日在6,900呎的飛行高度拍攝之鳥瞰照片（照片編號為E230172C）。
2. 香港特別行政區政府地政總署測繪處版權所有，未經許可，不得複製。
3. 由於發展項目邊界不規則的技術原因，鳥瞰照片所顯示之範圍可能多於《一手住宅物業銷售條例》所規定的範圍。
4. 賣方建議準買家到有關發展項目地盤作實地考察，以對該發展項目、其周邊地區的環境及附近的公共設施有較佳的了解。
5. 發展項目的鳥瞰照片之副本可於發展項目的售樓處開放時間內免費查閱。

Notes:

1. Adopted from part of the aerial photograph taken by the Survey and Mapping Office of The Lands Department at a flying height of 6,900 feet on 10 October 2024 (Photo No. E230172C).
2. Survey and Mapping Office, Lands Department, The Government of HKSAR © Copyright reserved – reproduction by permission only.
3. Due to the technical reason that the boundary of the Development is irregular, the aerial photograph may show area more than the area required under the Residential Properties (First-hand Sales) Ordinance.
4. The Vendor advises prospective purchasers to conduct an on-site visit for a better understanding of the Development, its surrounding environment and the public facilities nearby.
5. Copy of the aerial photograph of the Development is available for free inspection at the sales office of the Development during opening hours.