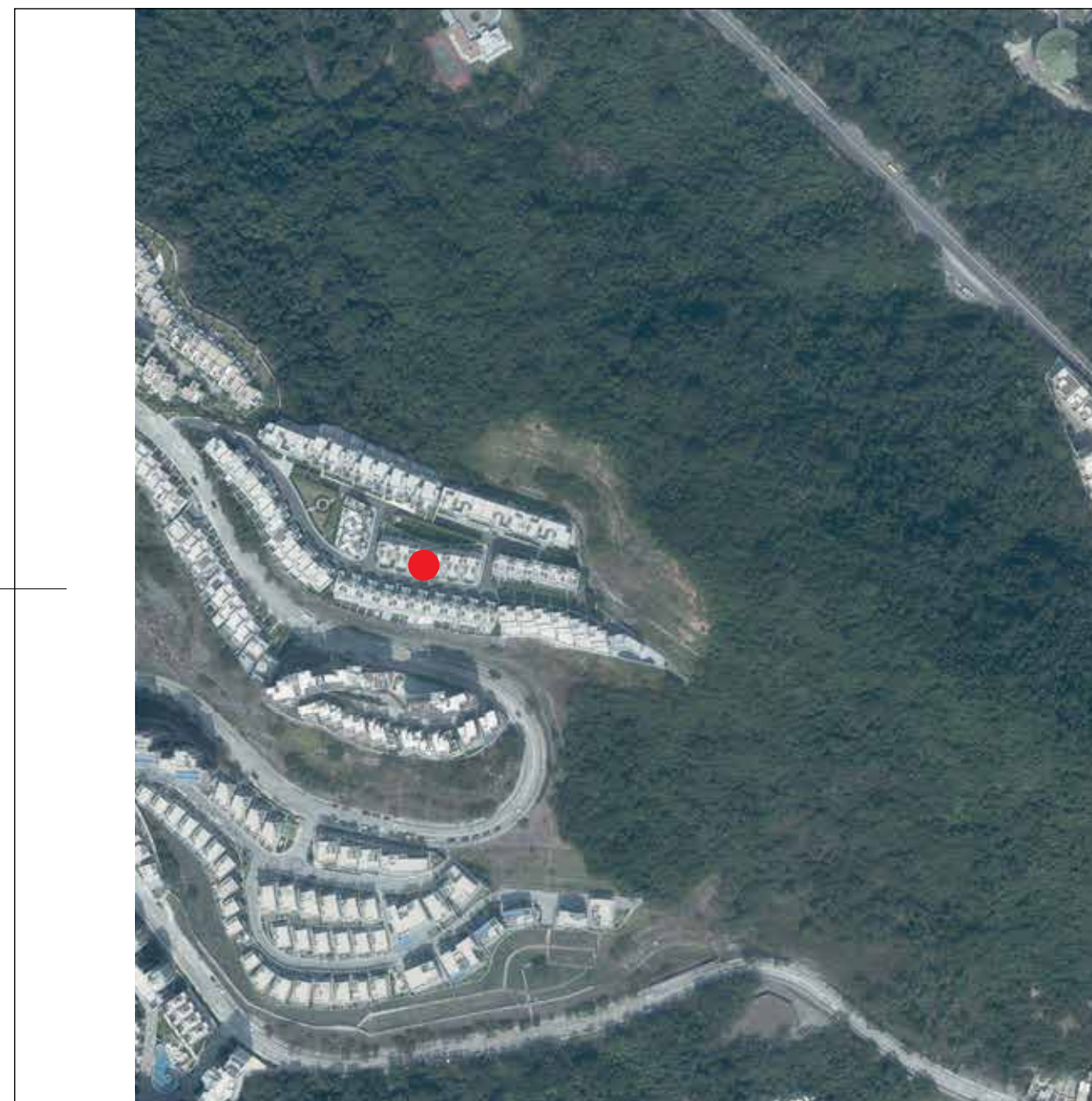


This blank area falls outside the coverage of the relevant Aerial Photograph
鳥瞰照片並不覆蓋本空白範圍



This blank area falls outside the coverage of the relevant Aerial Photograph
鳥瞰照片並不覆蓋本空白範圍

● 發展項目的位置
Location of the Development

● 發展項目的位置
Location of the Development

捕錄自地政總署測繪處在6,900呎的飛行高度拍攝之鳥瞰照片，照片編號E090111C及照片編號E090109C，飛行日期：2020年2月19日。

Adopted from part of the aerial photograph taken by the Survey and Mapping Office, Lands Department at a flying height of 6,900 feet, photo No. E090111C and photo No. E090109C, date of flight: 19 February 2020.

備註：

1. 香港特別行政區政府地政總署測繪處©版權所有，未經許可，不得複製。
2. 發展項目的鳥瞰照片之副本可於售樓處開放時間內免費查閱。
3. 發展項目的不規則界線引致的技術原因，此照片所顯示的範圍可能超過《一手住宅物業銷售條例》所要求顯示的範圍。

Notes:

1. Survey and Mapping Office, Lands Department, The Government of HKSAR © Copyright reserved - reproduction by permission only.
2. Copy of the aerial photograph of the Development is available for free inspection at the sales office during opening hours.
3. The aerial photograph may show more than the area required under the Residential Properties (First-hand Sales) Ordinance due to technical reasons that the boundary of the Development is irregular.