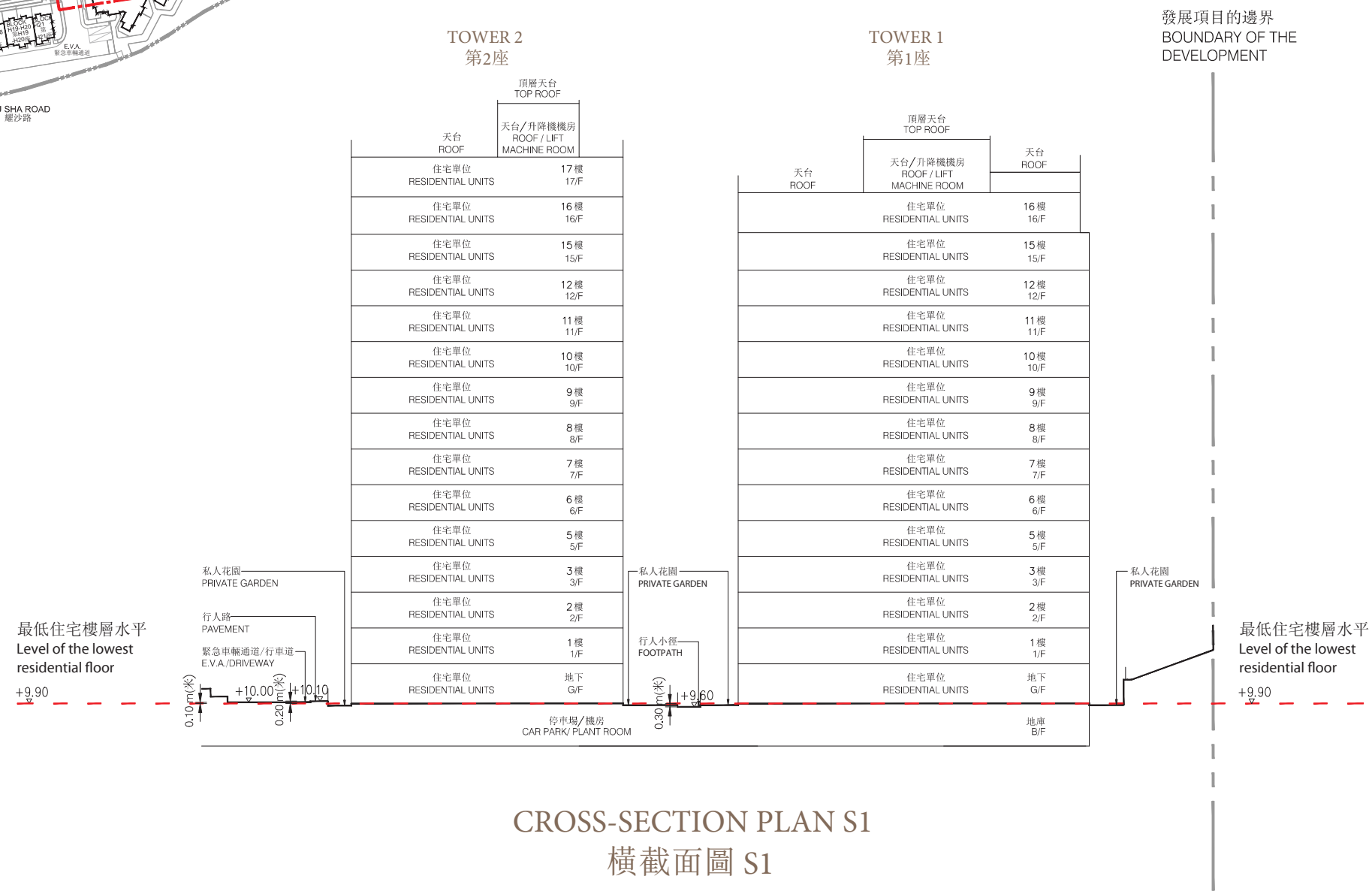
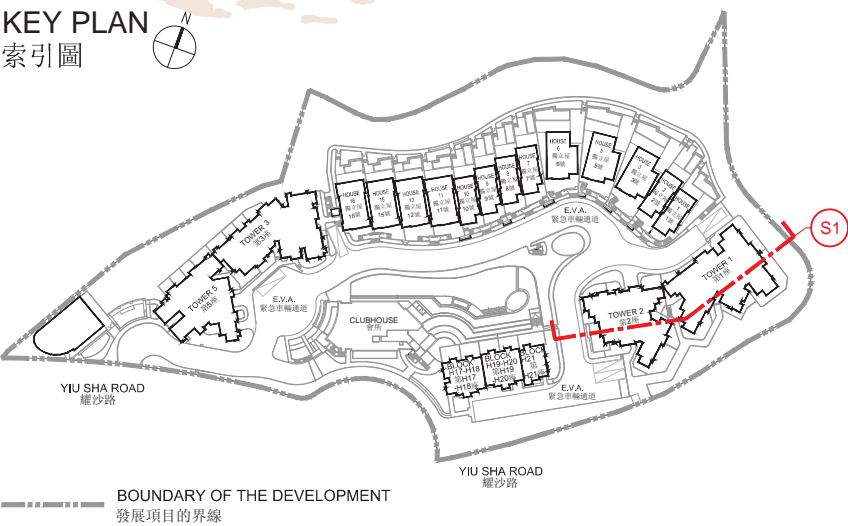


# CROSS-SECTION PLAN OF BUILDING IN THE DEVELOPMENT

## 發展項目中的建築物的橫截面圖

KEY PLAN  
索引圖

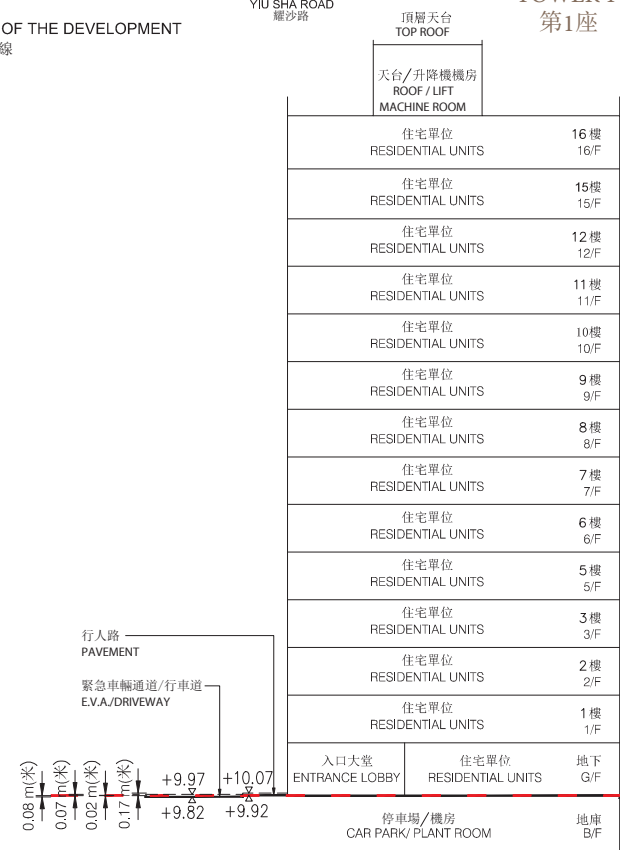
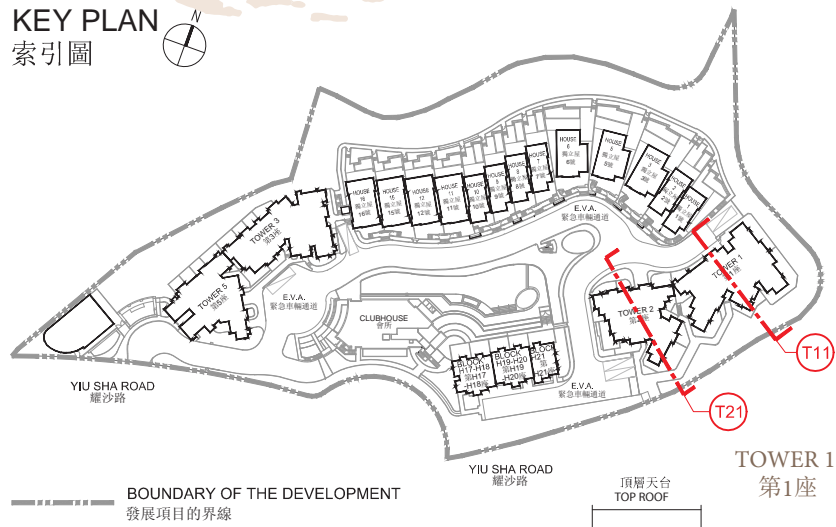


- Notes:
- ▽ Denotes height (in metres) above the Hong Kong Principal Datum.
  - Dotted line denotes the level of the lowest residential floor.
  - The part of Emergency Vehicular Access (E.V.A.)/Driveway adjacent to the building is 10.00 metres above the Hong Kong Principal Datum.
  - The part of pavement adjacent to the building is 10.10 metres above the Hong Kong Principal Datum.
  - The part of footpath adjacent to the building is 9.60 metres above the Hong Kong Principal Datum.

- 註:
- ▽ 代表香港主水平基準以上的高度(米)。
  - 虛線代表建築物之最低住宅樓層水平。
  - 毗連建築物的一段緊急車輛通道/行車道為香港主水平基準以上10.00米。
  - 毗連建築物的一段行人路為香港主水平基準以上10.10米。
  - 毗連建築物的一段行人小徑為香港主水平基準以上9.60米。

## CROSS-SECTION PLAN OF BUILDING IN THE DEVELOPMENT 發展項目中的建築物的橫截面圖

KEY PLAN  
索引圖



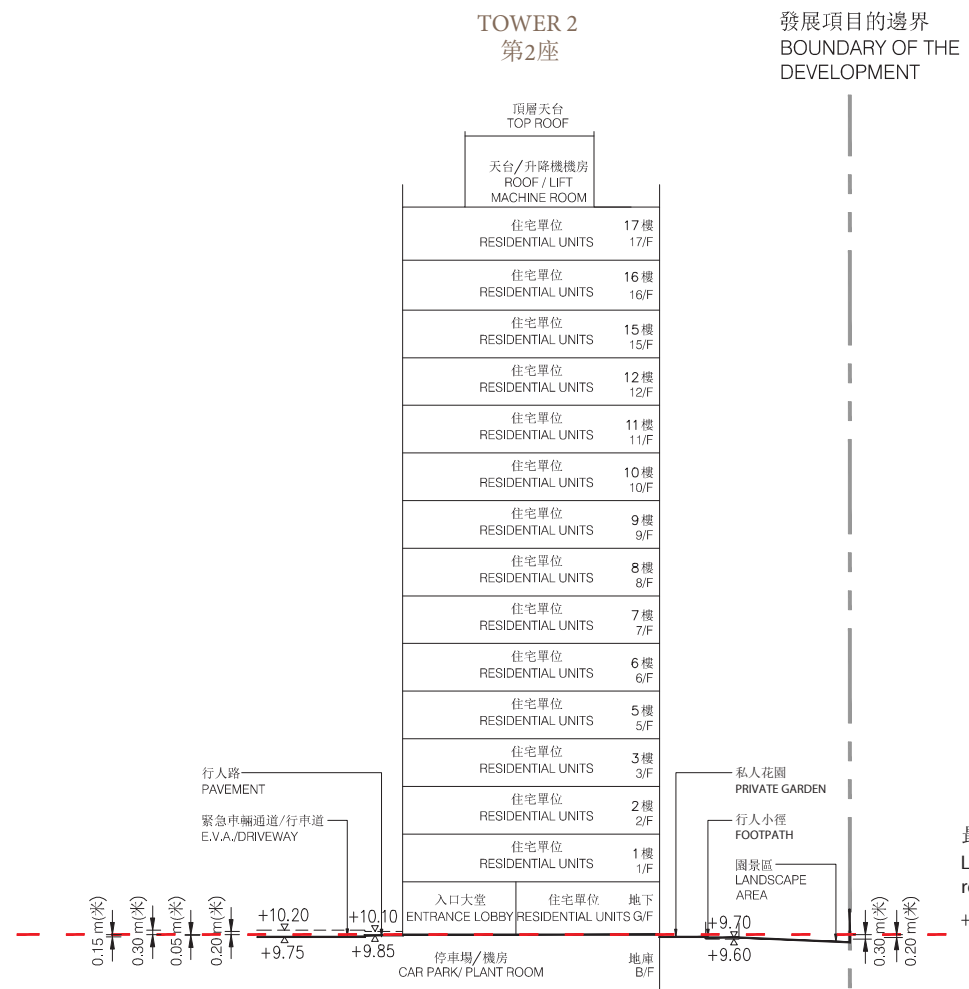
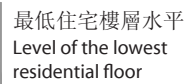
CROSS-SECTION PLAN T11  
橫截面圖 T11

Notes:

1. ▽ Denotes height (in metres) above the Hong Kong Principal Datum.
2. — — Dotted line denotes the level of the lowest residential floor.
3. The part of Emergency Vehicular Access (E.V.A./Driveway) adjacent to the building is 9.82 metres to 9.97 metres above the Hong Kong Principal Datum.
4. The part of pavement adjacent to the building is 9.92 metres to 10.07 metres above the Hong Kong Principal Datum.

註:

1. ▽ 代表香港主水平基準以上的高度(米)。
2. — 虛線代表建築物之最低住宅樓層水平。
3. 毗連建築物的一段緊急車輛通道/行車道為香港主水平基準以上9.82米至9.97米。
4. 毗連建築物的一段行人路為香港主水平基準以上9.92米至10.07米。



CROSS-SECTION PLAN T21  
橫截面圖 T21

Notes:

1. ▽ Denotes height (in metres) above the Hong Kong Principal Datum.
2. — — Dotted line denotes the level of the lowest residential floor.
3. The part of Emergency Vehicular Access (E.V.A.)/Driveway adjacent to the building is 9.75 metres to 10.20 metres above the Hong Kong Principal Datum.
4. The part of pavement adjacent to the building is 9.85 metres to 10.10 metres above the Hong Kong Principal Datum.
5. The part of footpath adjacent to the building is 9.60 metres to 9.70 metres above the Hong Kong Principal Datum.

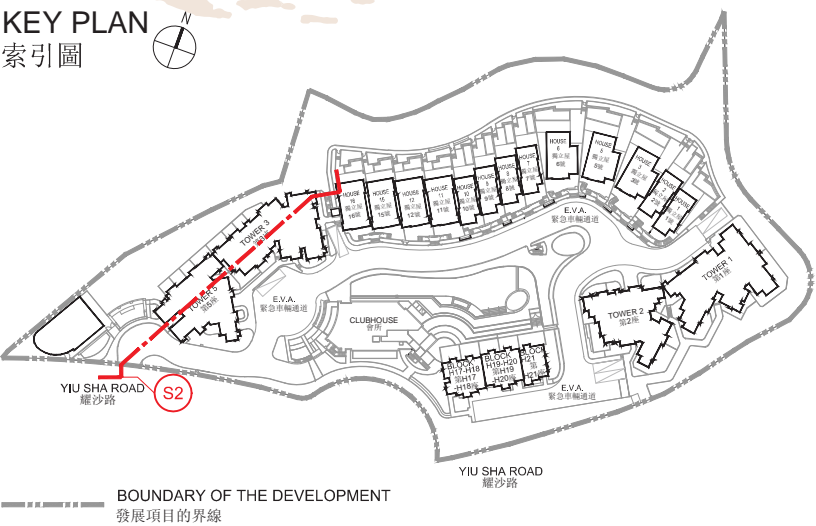
註:

1. ▽ 代表香港主水平基準以上的高度(米)。
2. — — 虛線代表建築物之最低住宅樓層水平。
3. 毗連建築物的一段緊急車輛通道/行車道為香港主水平基準以上9.75米至10.20米。
4. 毗連建築物的一段行人路為香港主水平基準以上9.85米至10.10米。
5. 毗連建築物的一段行人小徑為香港主水平基準以上9.60米至9.70米。

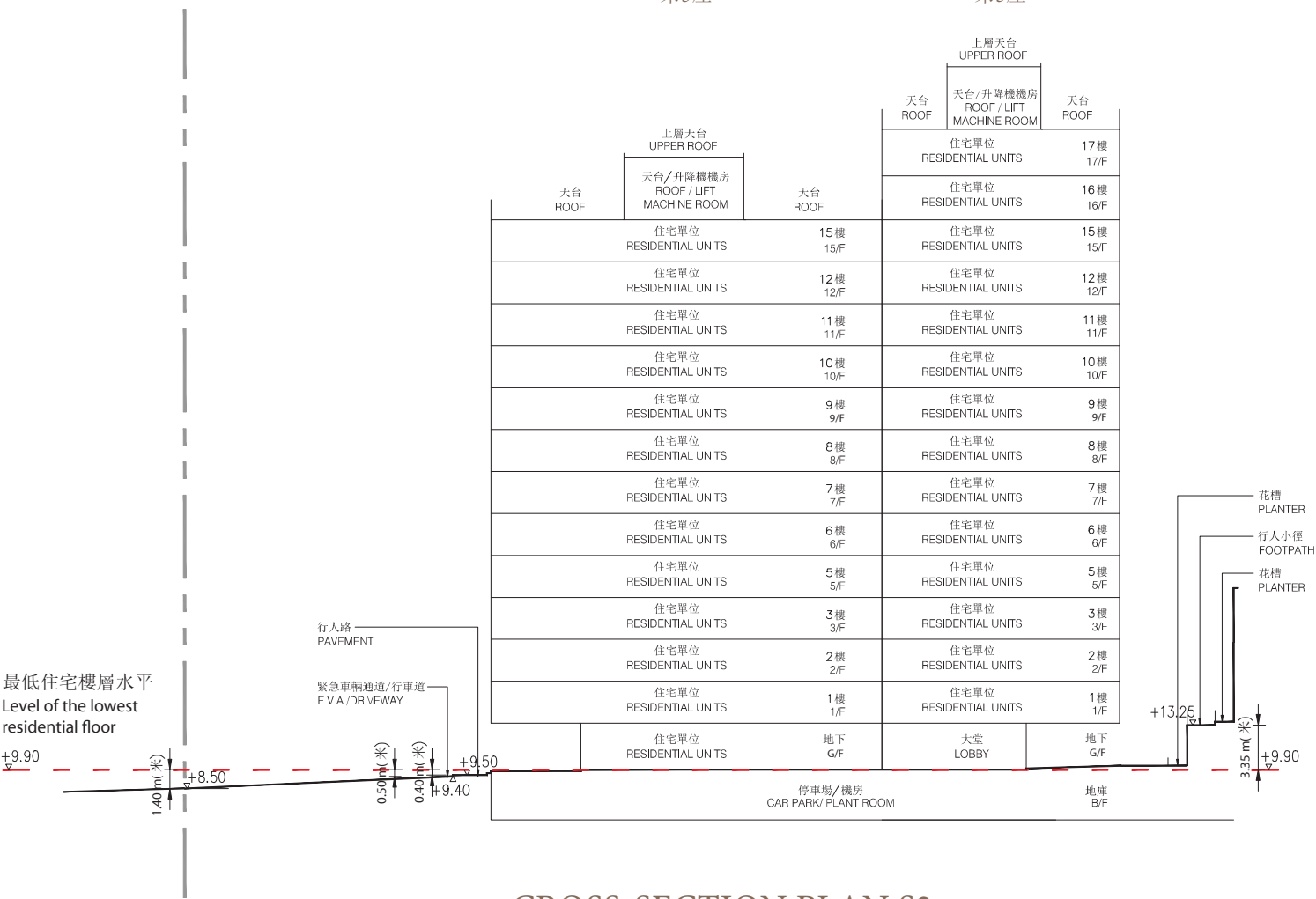
# CROSS-SECTION PLAN OF BUILDING IN THE DEVELOPMENT

## 發展項目中的建築物的橫截面圖

KEY PLAN  
索引圖



發展項目的邊界  
BOUNDARY OF THE DEVELOPMENT



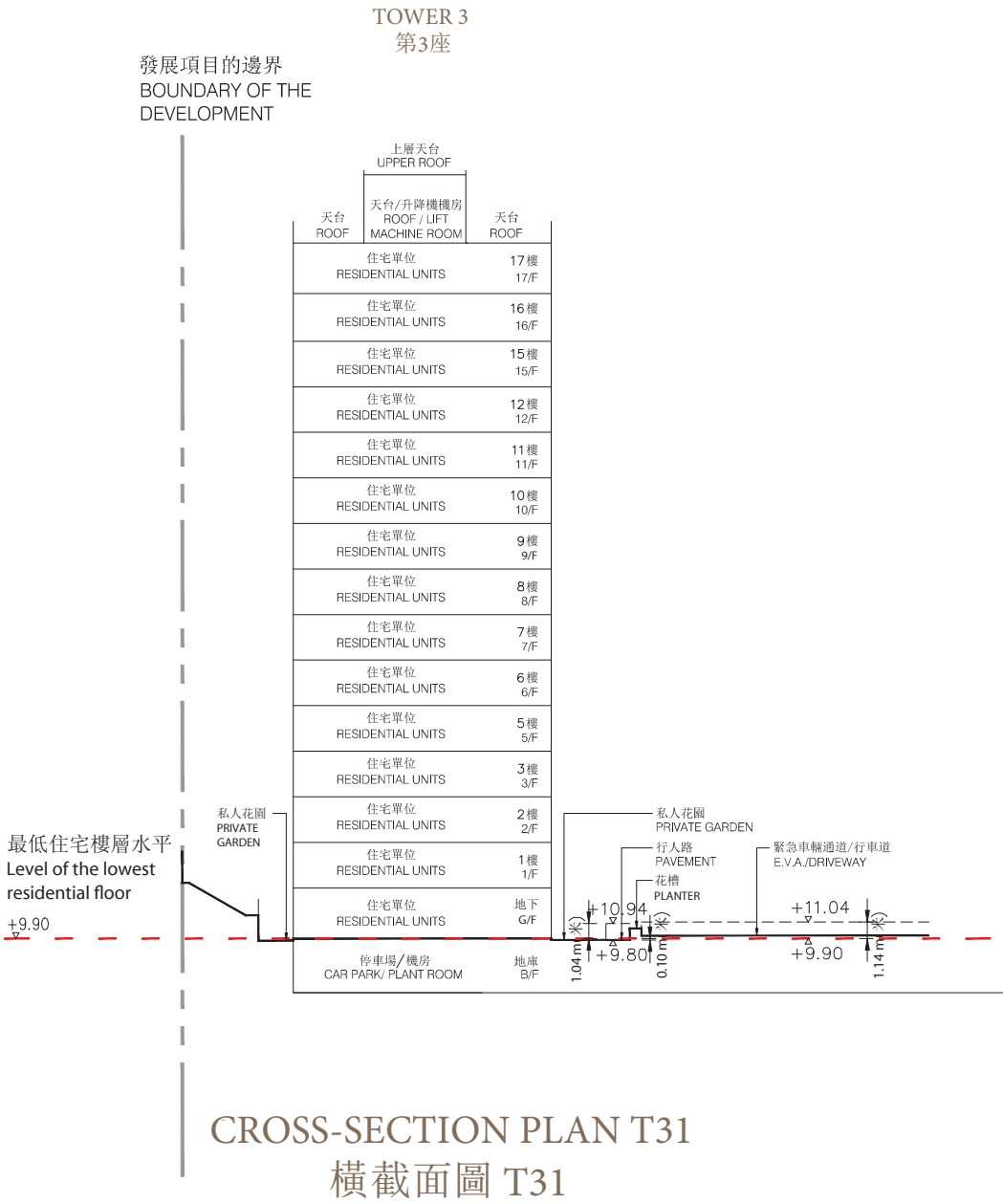
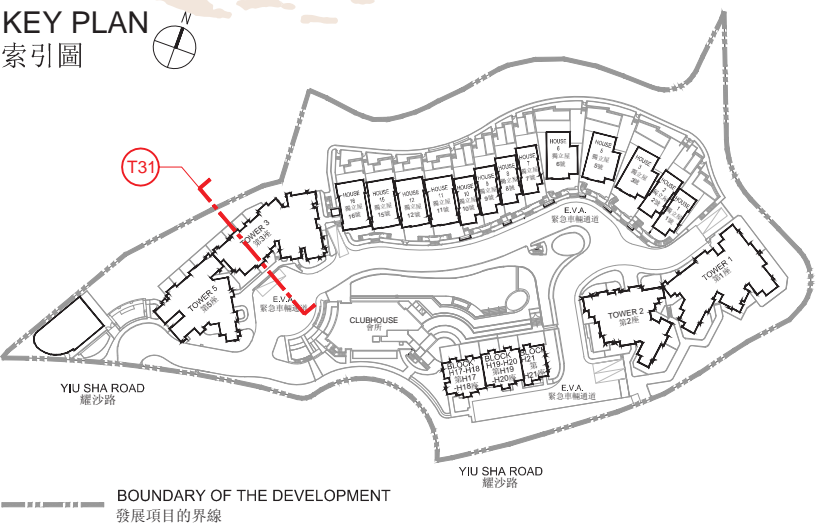
CROSS-SECTION PLAN S2  
橫截面圖 S2

- Notes:
- ▽ Denotes height (in metres) above the Hong Kong Principal Datum.
  - - Dotted line denotes the level of the lowest residential floor.
  - The part of Emergency Vehicular Access (E.V.A.)/Driveway adjacent to the building is 8.50 metres to 9.40 metres above the Hong Kong Principal Datum.
  - The part of pavement adjacent to the building is 9.50 metres above the Hong Kong Principal Datum.
  - The part of footpath adjacent to the building is 13.25 metres above the Hong Kong Principal Datum.

- 註:
- ▽ 代表香港主水平基準以上的高度(米)。
  - - 虛線代表建築物之最低住宅樓層水平。
  - 毗連建築物的一段緊急車輛通道/行車道為香港主水平基準以上8.50至9.40米。
  - 毗連建築物的一段行人路為香港主水平基準以上9.50米。
  - 毗連建築物的一段行人小徑為香港主水平基準以上13.25米。

# CROSS-SECTION PLAN OF BUILDING IN THE DEVELOPMENT

## 發展項目中的建築物的橫截面圖



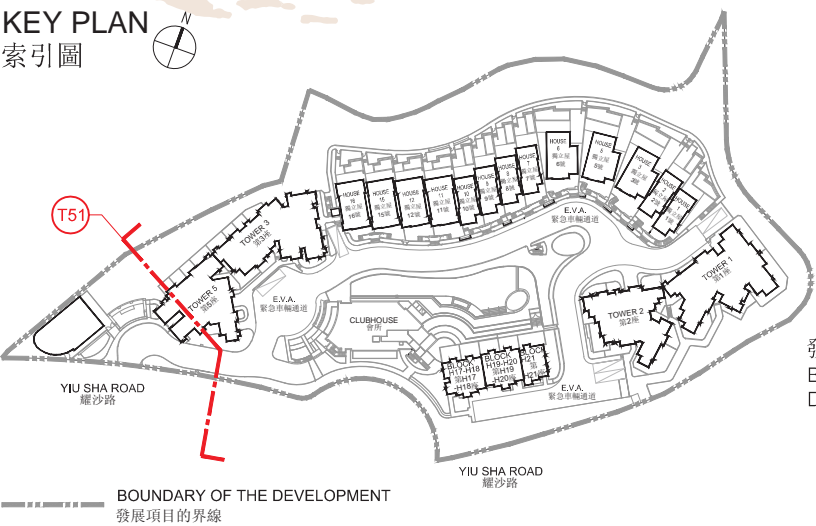
- Notes:
- ▽ Denotes height (in metres) above the Hong Kong Principal Datum.
  - - - Dotted line denotes the level of the lowest residential floor.
  - The part of Emergency Vehicular Access (E.V.A.)/Driveway adjacent to the building is 9.90 metres to 11.04 metres above the Hong Kong Principal Datum.
  - The part of pavement adjacent to the building is 9.80 metres to 10.94 metres above the Hong Kong Principal Datum.

- 註:
- ▽ 代表香港主水平基準以上的高度(米)。
  - - - 虛線代表建築物之最低住宅樓層水平。
  - 毗連建築物的一段緊急車輛通道/行車道為香港主水平基準以上9.90米至11.04米。
  - 毗連建築物的一段行人路為香港主水平基準以上9.80米至10.94米。

# CROSS-SECTION PLAN OF BUILDING IN THE DEVELOPMENT

## 發展項目中的建築物的橫截面圖

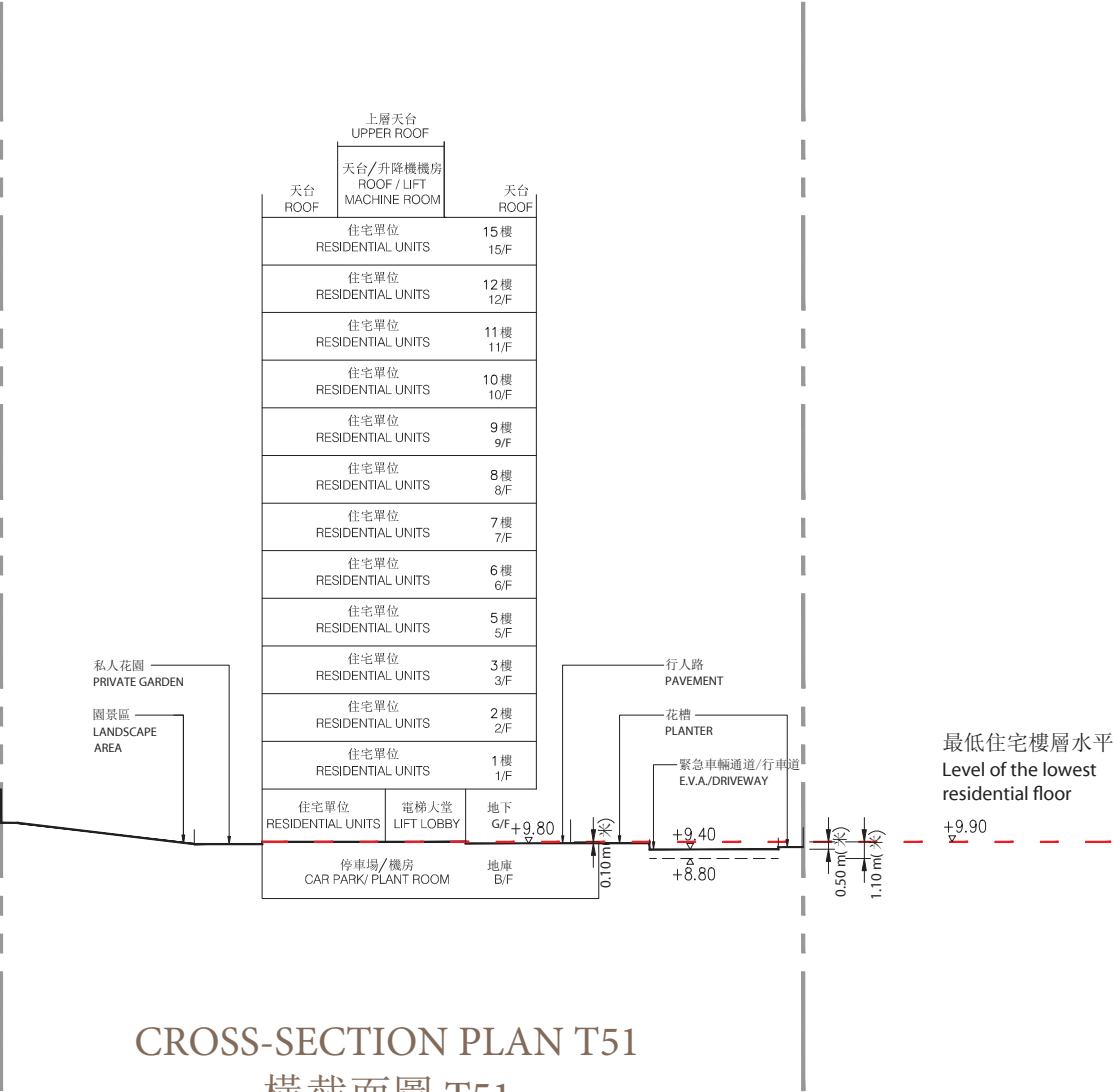
KEY PLAN  
索引圖



發展項目的邊界  
BOUNDARY OF THE DEVELOPMENT

TOWER 5  
第5座

發展項目的邊界  
BOUNDARY OF THE DEVELOPMENT



CROSS-SECTION PLAN T51  
橫截面圖 T51

- Notes:
- ▽ Denotes height (in metres) above the Hong Kong Principal Datum.
  - Dotted line denotes the level of the lowest residential floor.
  - The part of Emergency Vehicular Access (E.V.A.)/Driveway adjacent to the building is 8.80 metres to 9.40 metres above the Hong Kong Principal Datum.
  - The part of pavement adjacent to the building is 9.80 metres above the Hong Kong Principal Datum.

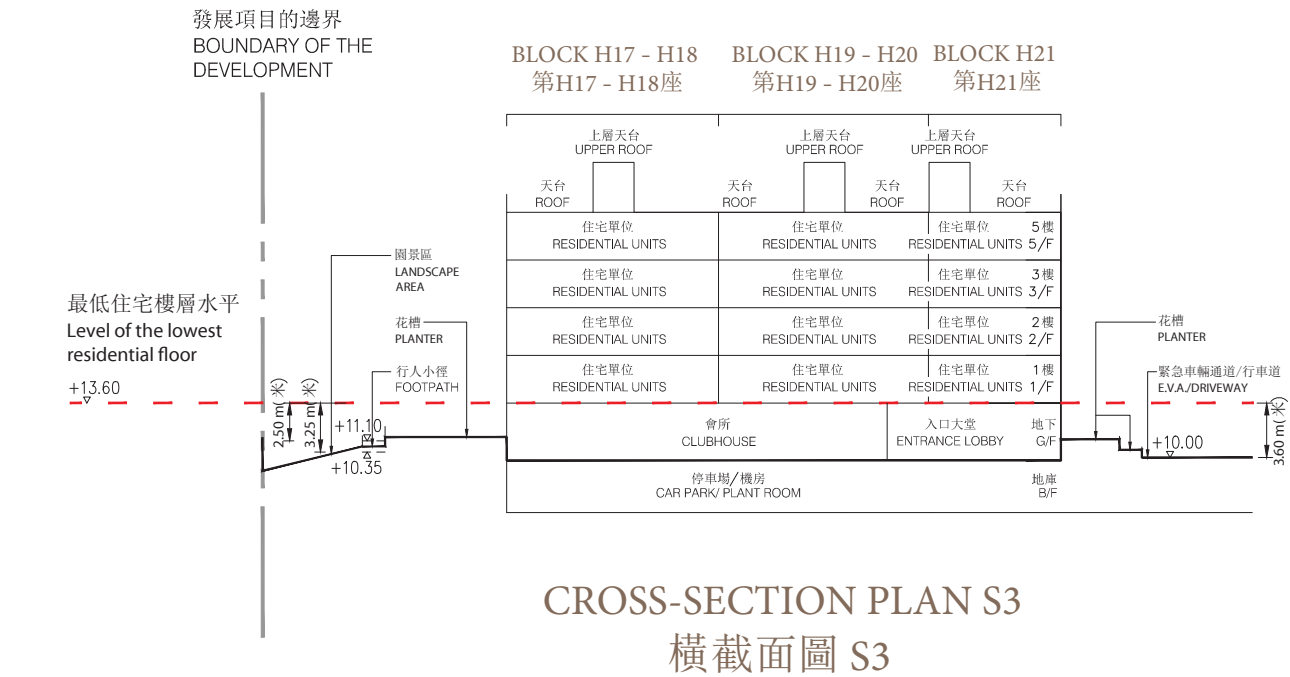
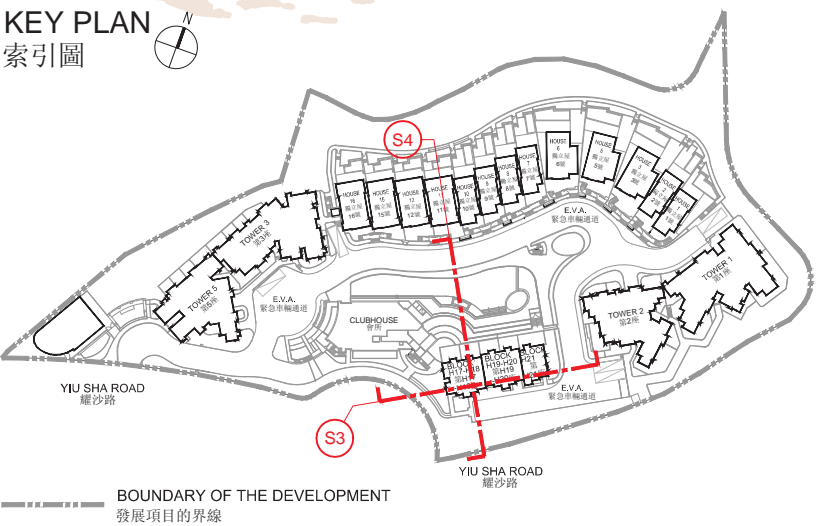
- 註:
- ▽ 代表香港主水平基準以上的高度(米)。
  - 虛線代表建築物之最低住宅樓層水平。
  - 毗連建築物的一段緊急車輛通道/行車道為香港主水平基準以上8.80米至9.40米。
  - 毗連建築物的一段行人路為香港主水平基準以上9.80米。



# CROSS-SECTION PLAN OF BUILDING IN THE DEVELOPMENT

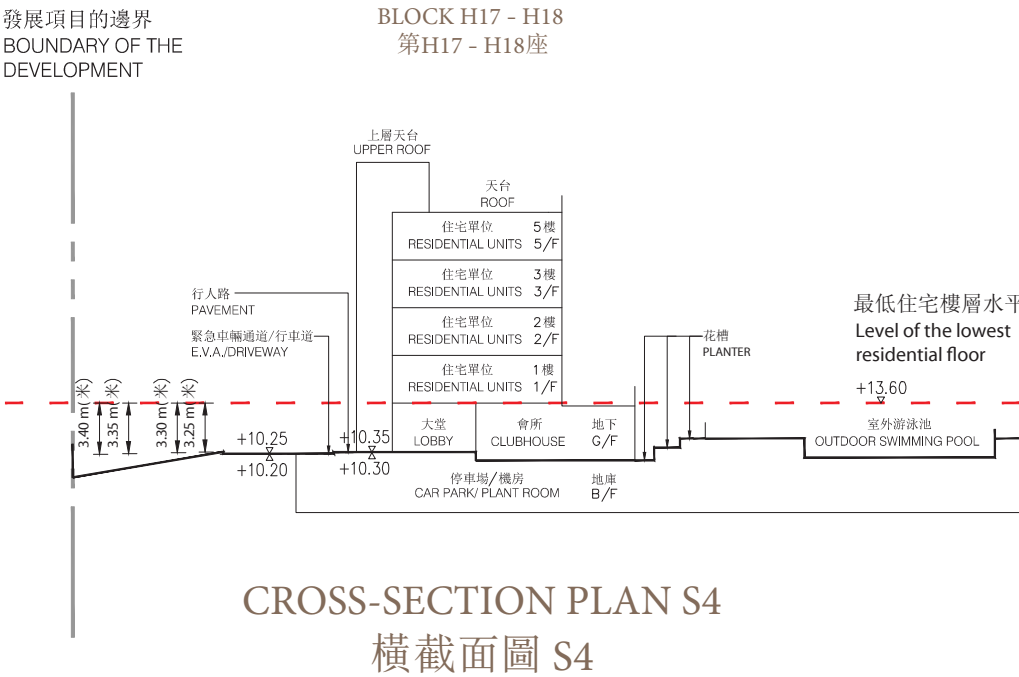
## 發展項目中的建築物的橫截面圖

KEY PLAN  
索引圖



- Notes:
- ▽ Denotes height (in metres) above the Hong Kong Principal Datum.
  - Dotted line denotes the level of the lowest residential floor.
  - The part of Emergency Vehicular Access (E.V.A.)/Driveway adjacent to the building is 10.00 metres above the Hong Kong Principal Datum.
  - The part of footpath adjacent to the building is 10.35 metres to 11.10 metres above the Hong Kong Principal Datum.

- 註:
- ▽ 代表香港主水平基準以上的高度(米)。
  - 虛線代表建築物之最低住宅樓層水平。
  - 毗連建築物的一段緊急車輛通道/行車道為香港主水平基準以上10.00米。
  - 毗連建築物的一段行人小徑為香港主水平基準以上10.35米至11.10米。



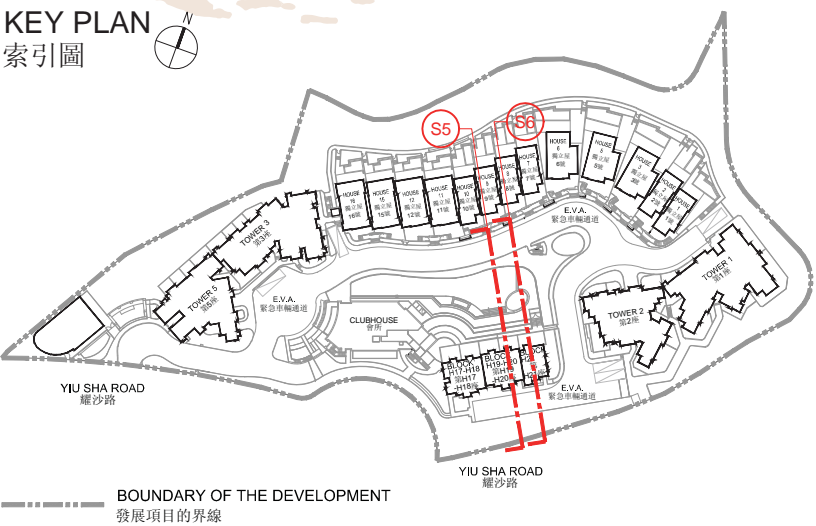
- Notes:
- ▽ Denotes height (in metres) above the Hong Kong Principal Datum.
  - Dotted line denotes the level of the lowest residential floor.
  - The part of Emergency Vehicular Access (E.V.A.)/Driveway adjacent to the building is 10.20 metres to 10.25 metres above the Hong Kong Principal Datum.
  - The part of pavement adjacent to the building is 10.30 metres to 10.35 metres above the Hong Kong Principal Datum.

- 註:
- ▽ 代表香港主水平基準以上的高度(米)。
  - 虛線代表建築物之最低住宅樓層水平。
  - 毗連建築物的一段緊急車輛通道/行車道為香港主水平基準以上10.20米至10.25米。
  - 毗連建築物的一段行人路為香港主水平基準以上10.30米至10.35米。

# CROSS-SECTION PLAN OF BUILDING IN THE DEVELOPMENT

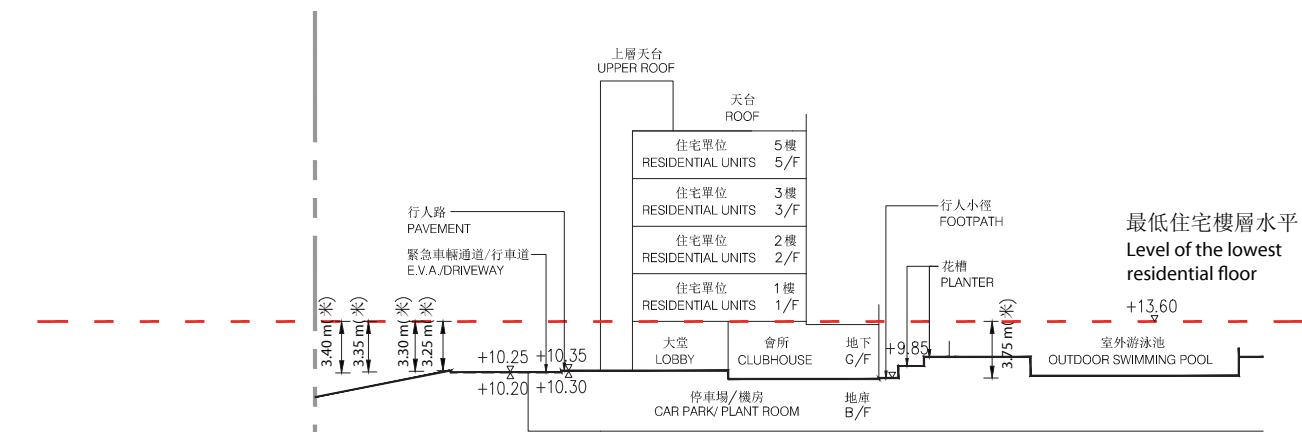
## 發展項目中的建築物的橫截面圖

KEY PLAN  
索引圖



發展項目的邊界  
BOUNDARY OF THE DEVELOPMENT

BLOCK H19 - H20  
第H19 - H20座



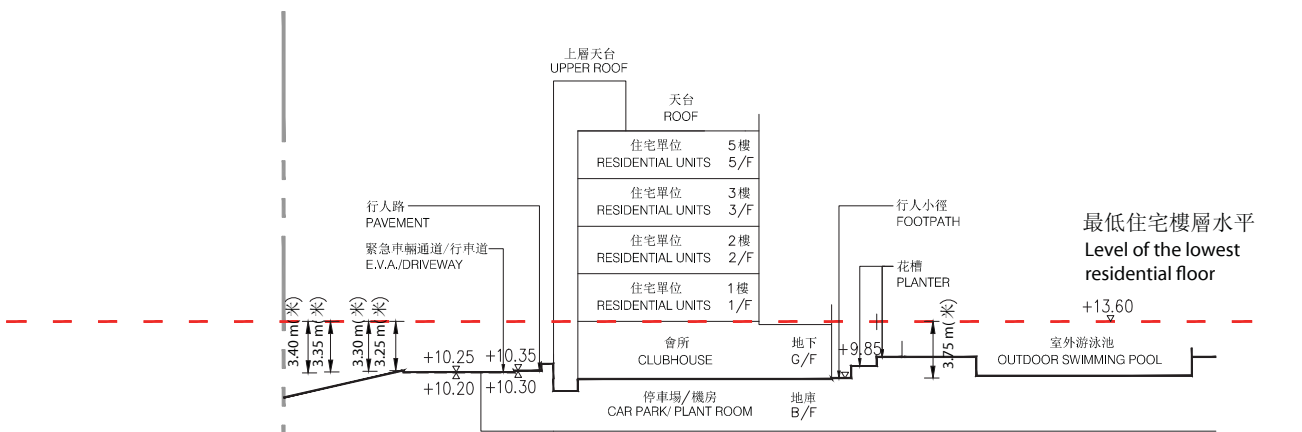
CROSS-SECTION PLAN S5  
橫截面圖 S5

- Notes:
- ▽ Denotes height (in metres) above the Hong Kong Principal Datum.
  - Dotted line denotes the level of the lowest residential floor.
  - The part of Emergency Vehicular Access (E.V.A.)/Driveway adjacent to the building is 10.20 metres to 10.25 metres above the Hong Kong Principal Datum.
  - The part of pavement adjacent to the building is 10.30 metres to 10.35 metres above the Hong Kong Principal Datum.
  - The part of footpath adjacent to the building is 9.85 metres above the Hong Kong Principal Datum.

- 註:
- ▽ 代表香港主水平基準以上的高度(米)。
  - 虛線代表建築物之最低住宅樓層水平。
  - 毗連建築物的一段緊急車輛通道/行車道為香港主水平基準以上10.20米至10.25米。
  - 毗連建築物的一段行人路為香港主水平基準以上10.30米至10.35米。
  - 毗連建築物的一段行人小徑為香港主水平基準以上9.85米。

發展項目的邊界  
BOUNDARY OF THE DEVELOPMENT

BLOCK H21  
第H21座



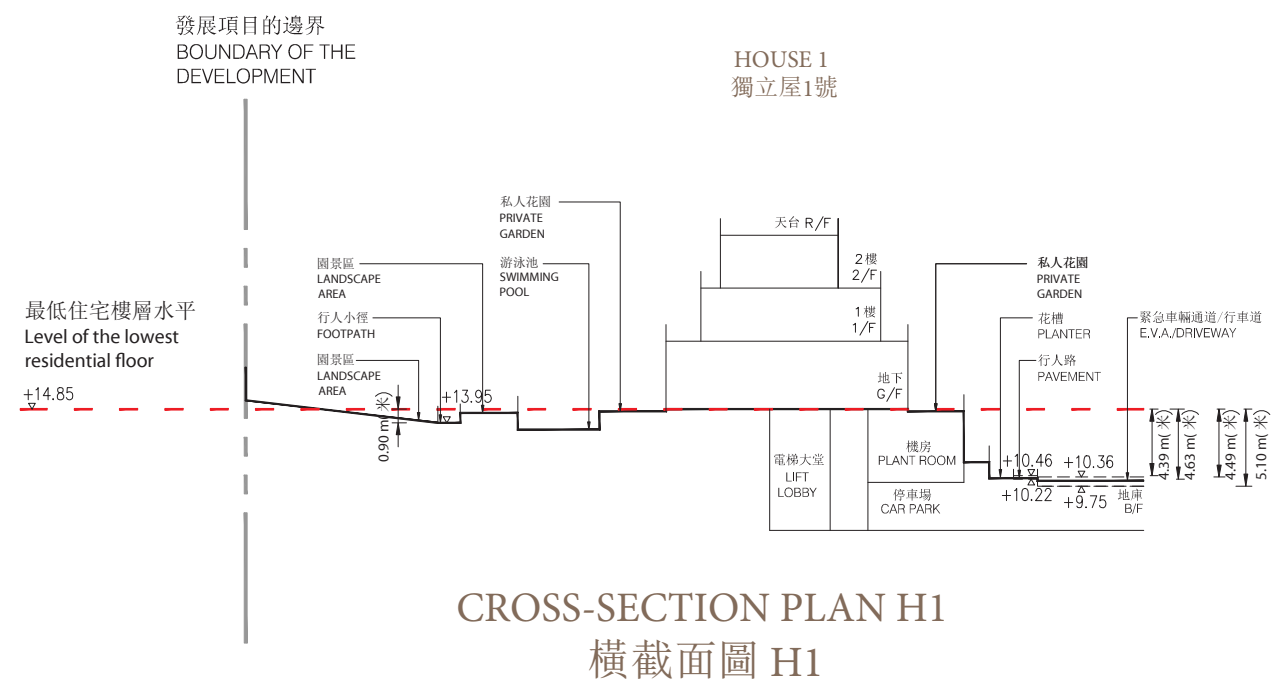
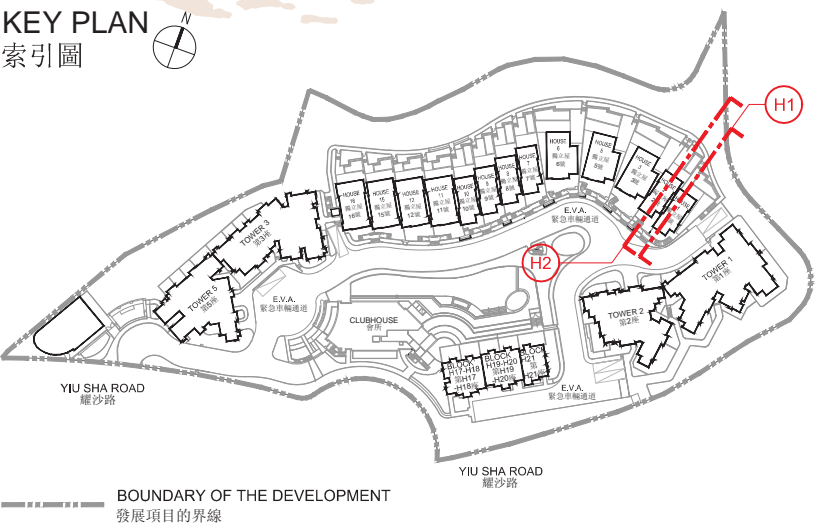
CROSS-SECTION PLAN S6  
橫截面圖 S6

- Notes:
- ▽ Denotes height (in metres) above the Hong Kong Principal Datum.
  - Dotted line denotes the level of the lowest residential floor.
  - The part of Emergency Vehicular Access (E.V.A.)/Driveway adjacent to the building is 10.20 metres to 10.25 metres above the Hong Kong Principal Datum.
  - The part of pavement adjacent to the building is 10.30 metres to 10.35 metres above the Hong Kong Principal Datum.
  - The part of footpath adjacent to the building is 9.85 metres above the Hong Kong Principal Datum.

- 註:
- ▽ 代表香港主水平基準以上的高度(米)。
  - 虛線代表建築物之最低住宅樓層水平。
  - 毗連建築物的一段緊急車輛通道/行車道為香港主水平基準以上10.20米至10.25米。
  - 毗連建築物的一段行人路為香港主水平基準以上10.30米至10.35米。
  - 毗連建築物的一段行人小徑為香港主水平基準以上9.85米。

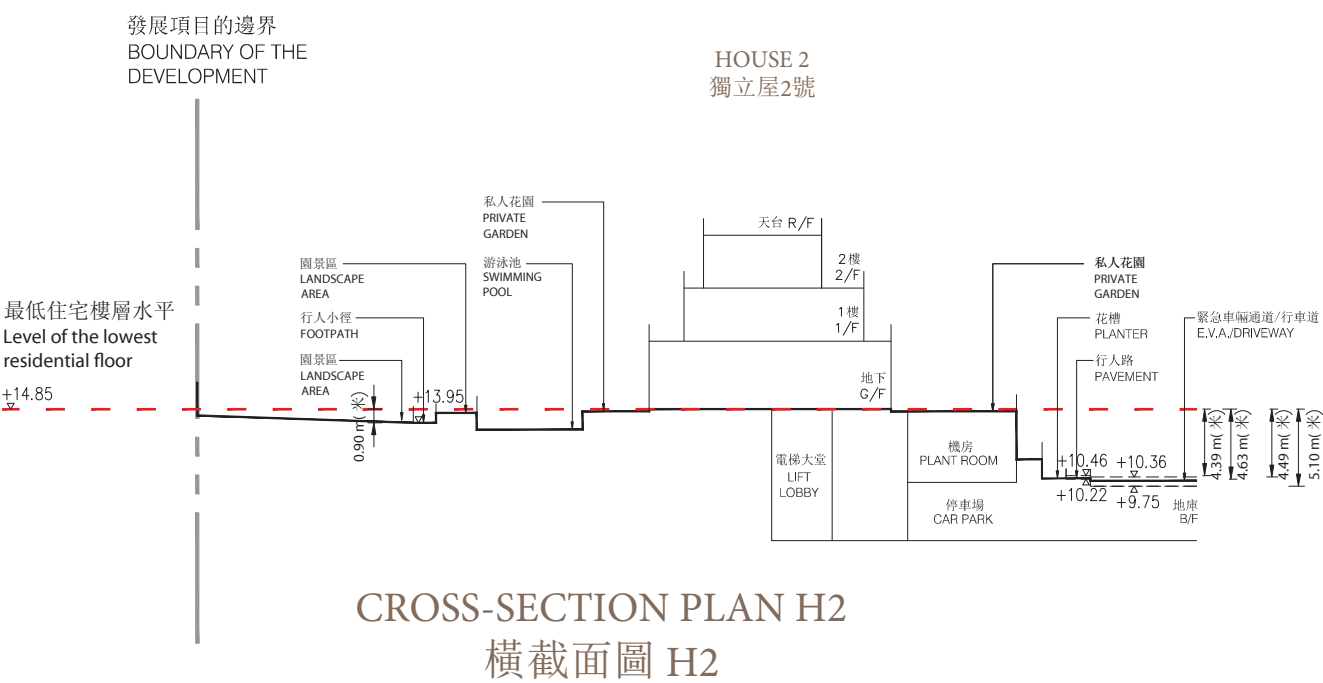
# CROSS-SECTION PLAN OF BUILDING IN THE DEVELOPMENT

## 發展項目中的建築物的橫截面圖



- Notes:
- ▽ Denotes height (in metres) above the Hong Kong Principal Datum.
  - Dotted line denotes the level of the lowest residential floor.
  - The part of Emergency Vehicular Access (E.V.A.)/Driveway adjacent to the building is 9.75 metres to 10.36 metres above the Hong Kong Principal Datum.
  - The part of pavement adjacent to the building is 10.22 metres to 10.46 metres above the Hong Kong Principal Datum.
  - The part of footpath adjacent to the building is 13.95 metres above the Hong Kong Principal Datum.

- 註:
- ▽ 代表香港主水平基準以上的高度(米)。
  - 虛線代表建築物之最低住宅樓層水平。
  - 毗連建築物的一段緊急車輛通道/行車道為香港主水平基準以上9.75米至10.36米。
  - 毗連建築物的一段行人路為香港主水平基準以上10.22米至10.46米。
  - 毗連建築物的一段行人小徑為香港主水平基準以上13.95米。



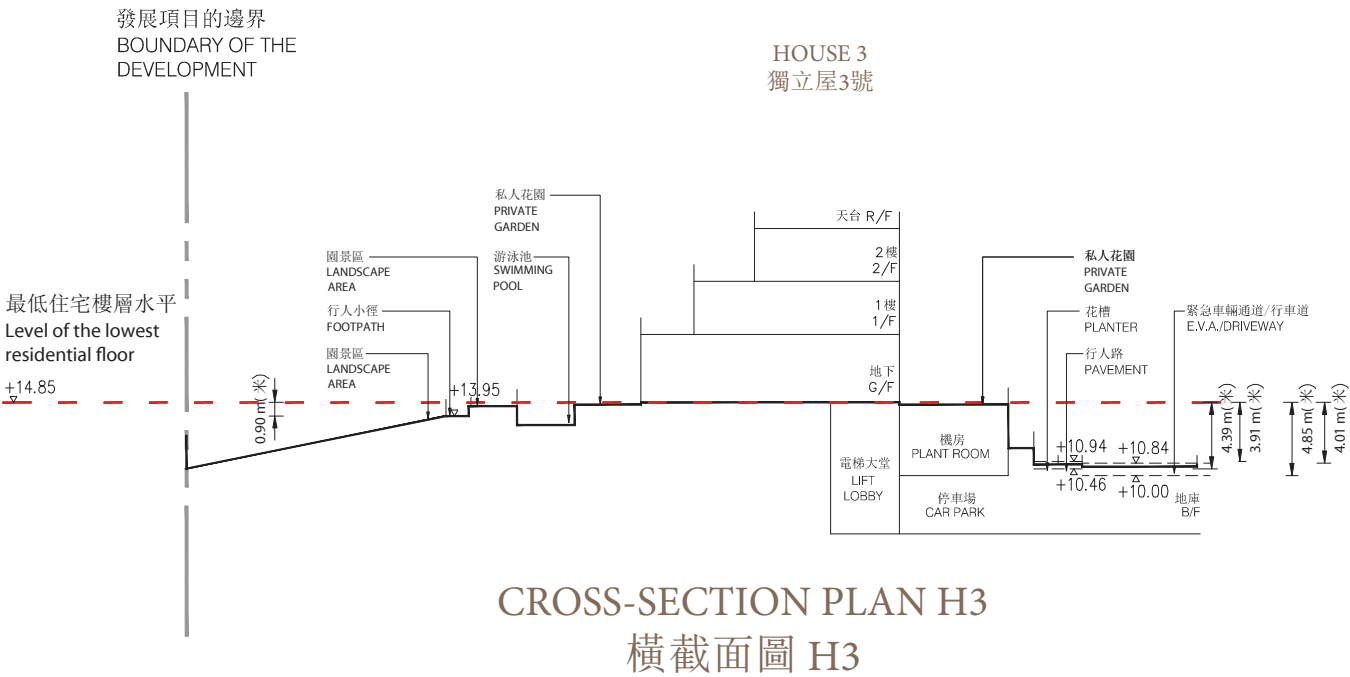
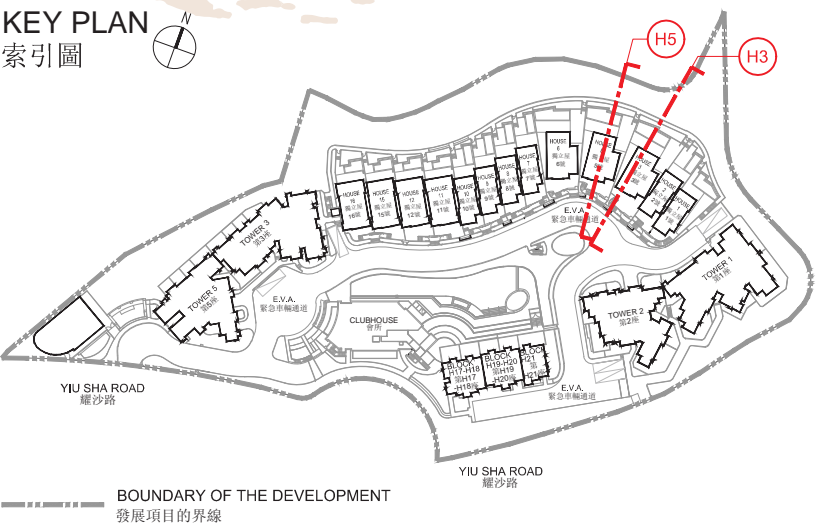
- Notes:
- ▽ Denotes height (in metres) above the Hong Kong Principal Datum.
  - Dotted line denotes the level of the lowest residential floor.
  - The part of Emergency Vehicular Access (E.V.A.)/Driveway adjacent to the building is 9.75metres to 10.36 metres above the Hong Kong Principal Datum.
  - The part of pavement adjacent to the building is 10.22 metres to 10.46 metres above the Hong Kong Principal Datum.
  - The part of footpath adjacent to the building is 13.95 metres above the Hong Kong Principal Datum.

- 註:
- ▽ 代表香港主水平基準以上的高度(米)。
  - 虛線代表建築物之最低住宅樓層水平。
  - 毗連建築物的一段緊急車輛通道/行車道為香港主水平基準以上9.75米至10.36米。
  - 毗連建築物的一段行人路為香港主水平基準以上10.22米至10.46米。
  - 毗連建築物的一段行人小徑為香港主水平基準以上13.95米。



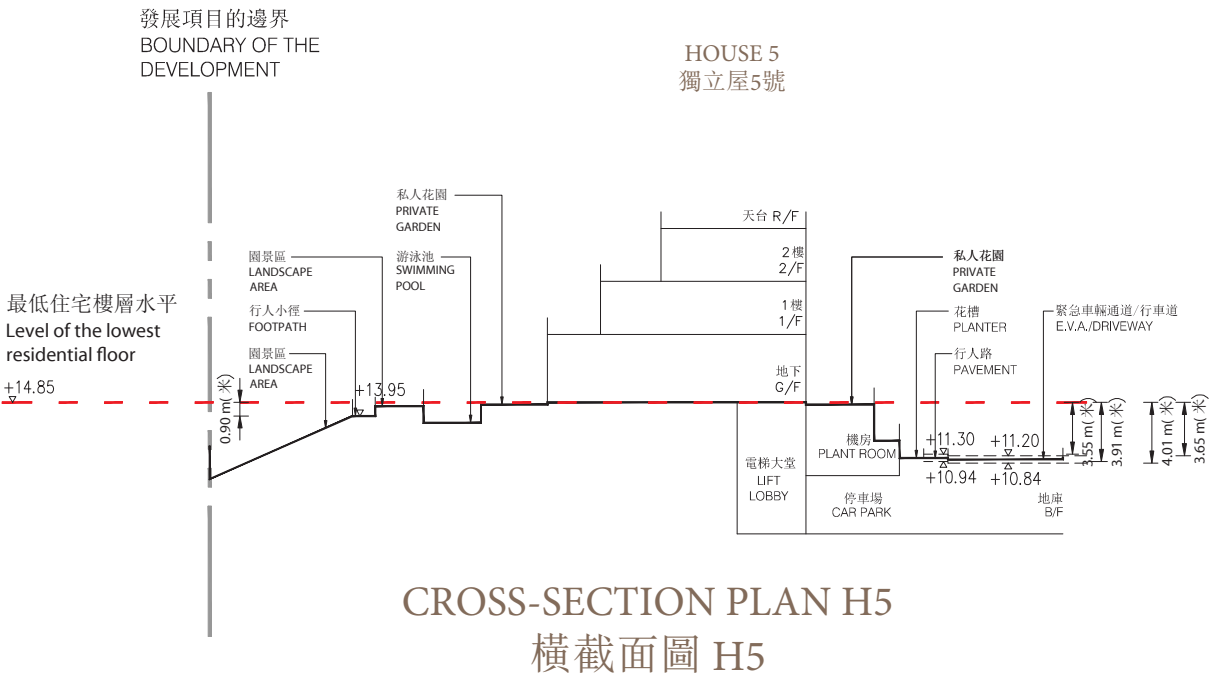
# CROSS-SECTION PLAN OF BUILDING IN THE DEVELOPMENT

## 發展項目中的建築物的橫截面圖



- Notes:
- ▽ Denotes height (in metres) above the Hong Kong Principal Datum.
  - - Dotted line denotes the level of the lowest residential floor.
  - The part of Emergency Vehicular Access (E.V.A.)/Driveway adjacent to the building is 10.00 metres to 10.84 metres above the Hong Kong Principal Datum.
  - The part of pavement adjacent to the building is 10.46 metres to 10.94 metres above the Hong Kong Principal Datum.
  - The part of footpath adjacent to the building is 13.95 metres above the Hong Kong Principal Datum.

- 註:
- ▽ 代表香港主水平基準以上的高度(米)。
  - - 虛線代表建築物之最低住宅樓層水平。
  - 毗連建築物的一段緊急車輛通道/行車道為香港主水平基準以上10.00米至10.84米。
  - 毗連建築物的一段行人路為香港主水平基準以上10.46米至10.94米。
  - 毗連建築物的一段行人小徑為香港主水平基準以上13.95米。

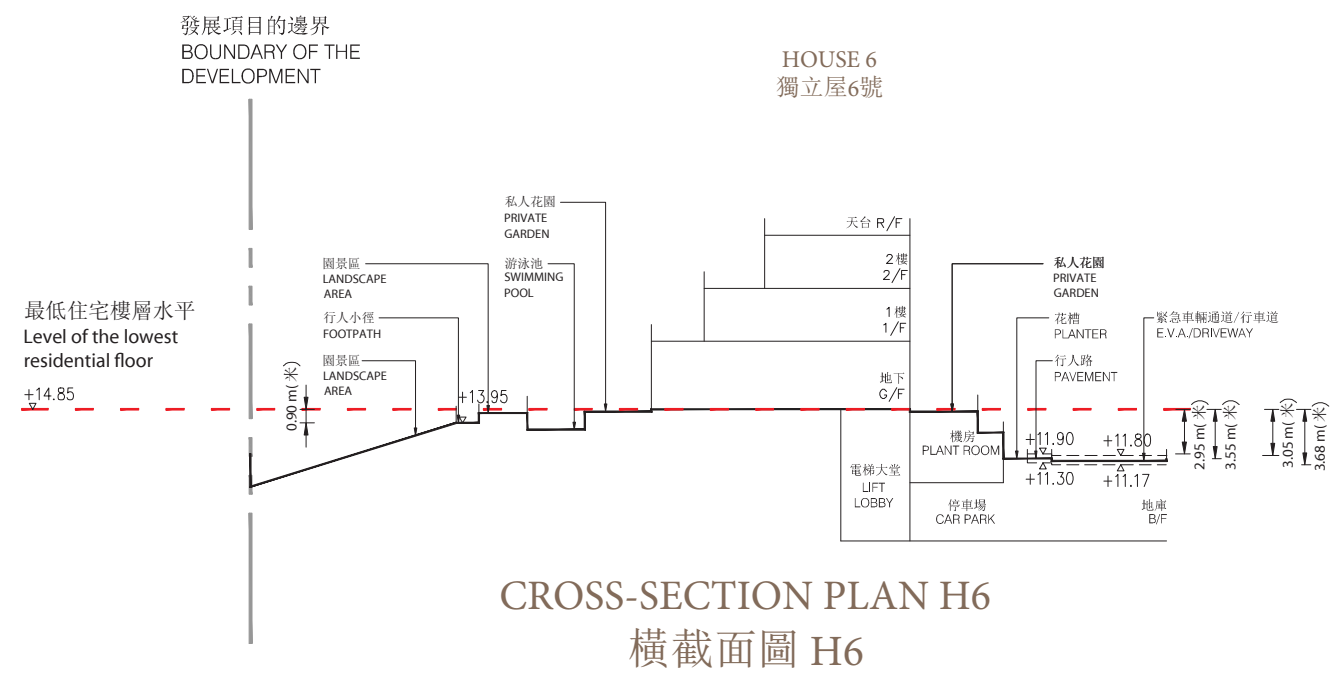
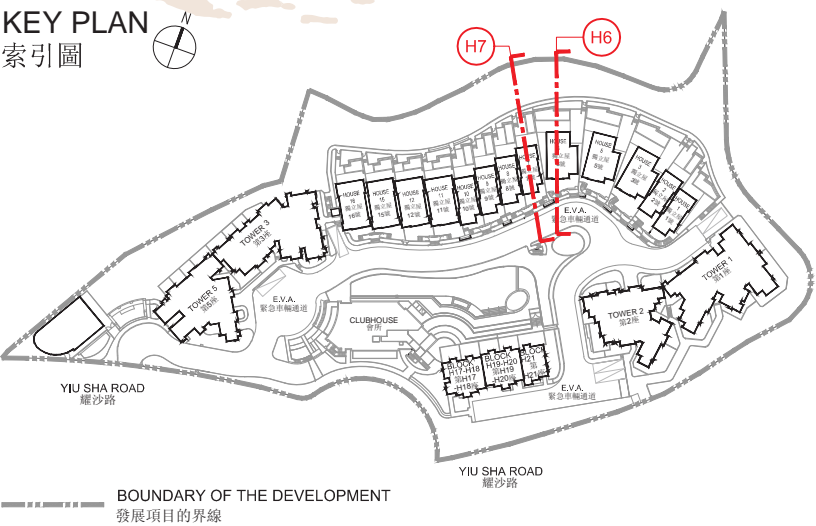


- Notes:
- ▽ Denotes height (in metres) above the Hong Kong Principal Datum.
  - - Dotted line denotes the level of the lowest residential floor.
  - The part of Emergency Vehicular Access (E.V.A.)/Driveway adjacent to the building is 10.84 metres to 11.20 metres above the Hong Kong Principal Datum.
  - The part of pavement adjacent to the building is 10.94 metres to 11.30 metres above the Hong Kong Principal Datum.
  - The part of footpath adjacent to the building is 13.95 metres above the Hong Kong Principal Datum.

- 註:
- ▽ 代表香港主水平基準以上的高度(米)。
  - - 虛線代表建築物之最低住宅樓層水平。
  - 毗連建築物的一段緊急車輛通道/行車道為香港主水平基準以上10.84米至11.20米。
  - 毗連建築物的一段行人路為香港主水平基準以上10.94米至11.30米。
  - 毗連建築物的一段行人小徑為香港主水平基準以上13.95米。

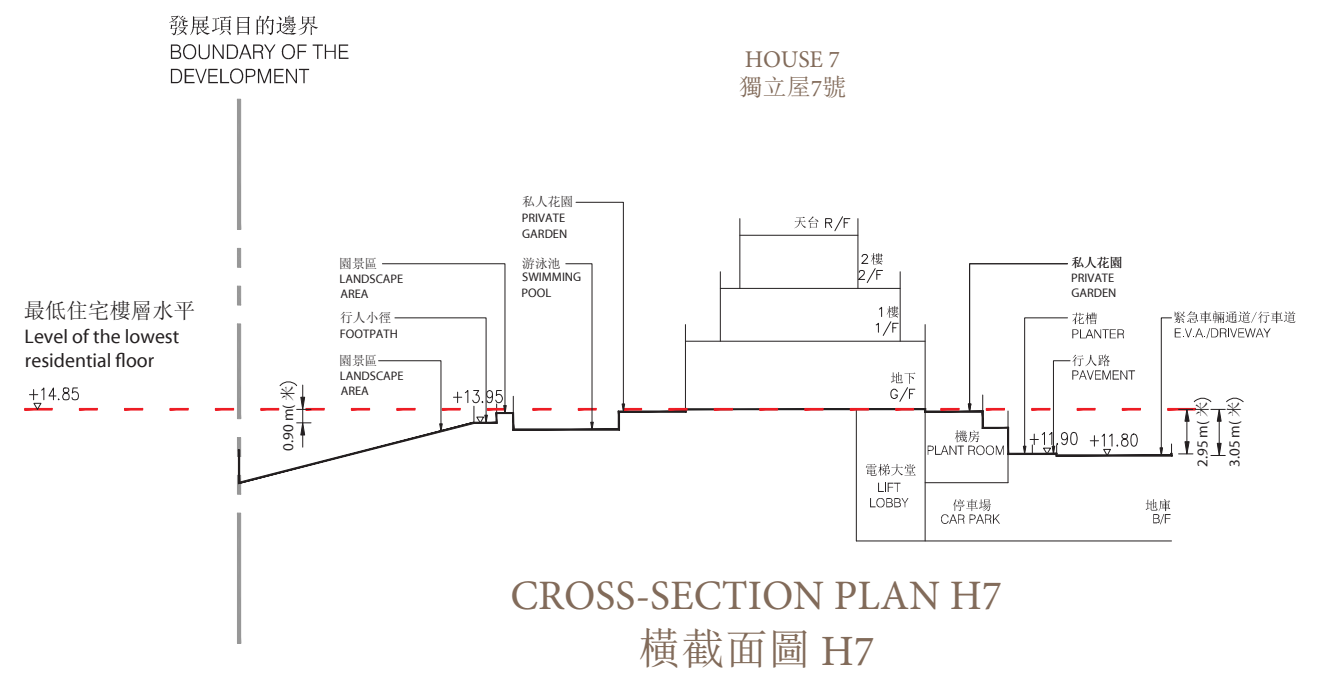
# CROSS-SECTION PLAN OF BUILDING IN THE DEVELOPMENT

## 發展項目中的建築物的橫截面圖



- Notes:
- ▽ Denotes height (in metres) above the Hong Kong Principal Datum.
  - Dotted line denotes the level of the lowest residential floor.
  - The part of Emergency Vehicular Access (E.V.A.)/Driveway adjacent to the building is 11.17 metres to 11.80 metres above the Hong Kong Principal Datum.
  - The part of pavement adjacent to the building is 11.30 metres to 11.90 metres above the Hong Kong Principal Datum.
  - The part of footpath adjacent to the building is 13.95 metres above the Hong Kong Principal Datum.

- 註:
- ▽ 代表香港主水平基準以上的高度(米)。
  - 虛線代表建築物之最低住宅樓層水平。
  - 毗連建築物的一段緊急車輛通道/行車道為香港主水平基準以上11.17米至11.80米。
  - 毗連建築物的一段行人路為香港主水平基準以上11.30米至11.90米。
  - 毗連建築物的一段行人小徑為香港主水平基準以上13.95米。

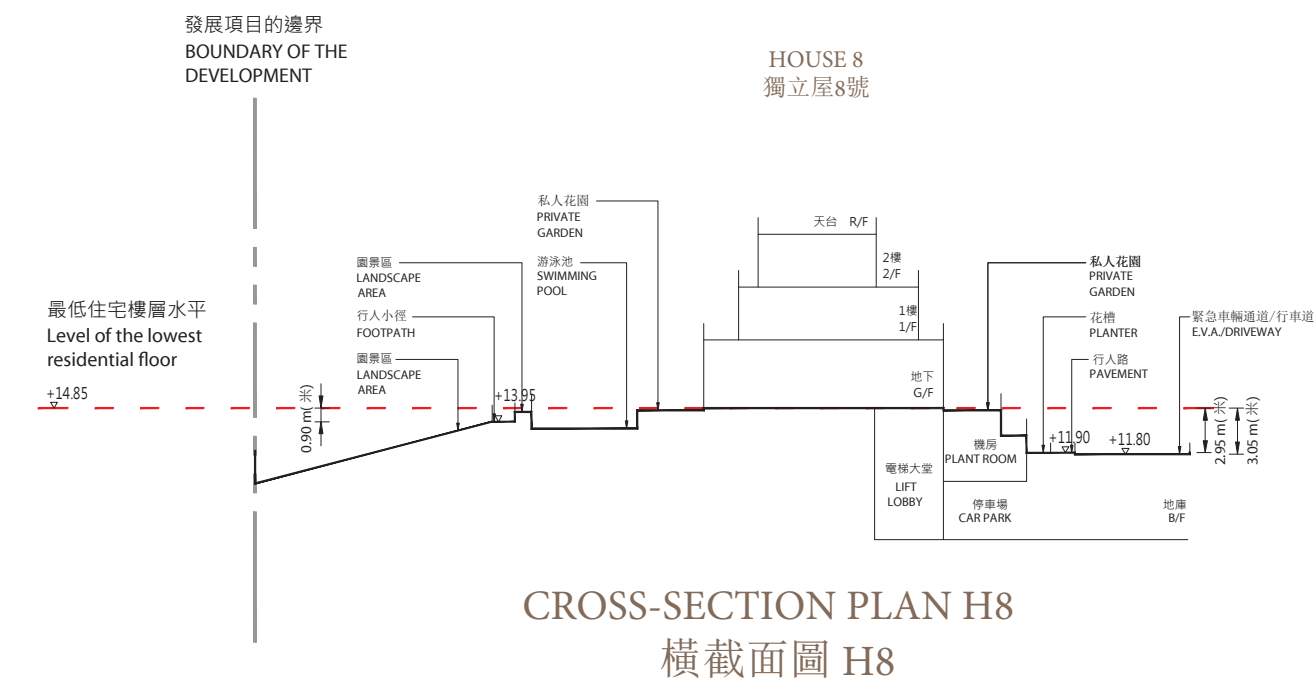
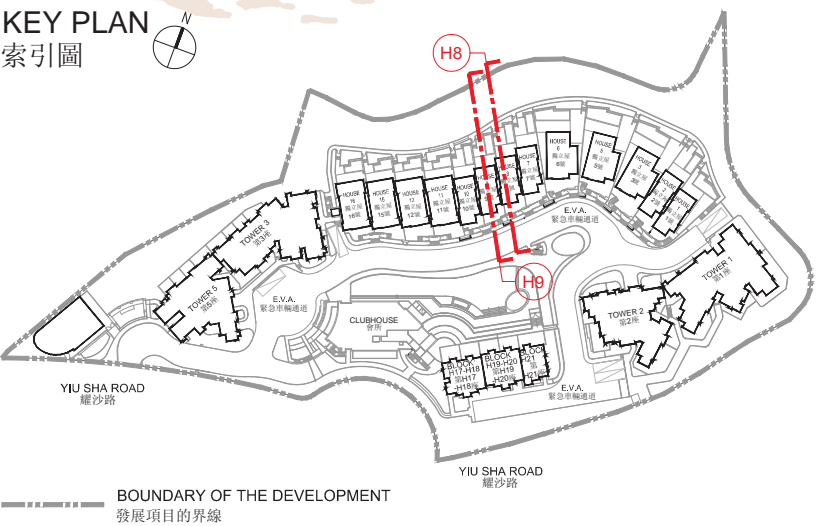


- Notes:
- ▽ Denotes height (in metres) above the Hong Kong Principal Datum.
  - Dotted line denotes the level of the lowest residential floor.
  - The part of Emergency Vehicular Access (E.V.A.)/Driveway adjacent to the building is 11.80 metres above the Hong Kong Principal Datum.
  - The part of pavement adjacent to the building is 11.90 metres above the Hong Kong Principal Datum.
  - The part of footpath adjacent to the building is 13.95 metres above the Hong Kong Principal Datum.

- 註:
- ▽ 代表香港主水平基準以上的高度(米)。
  - 虛線代表建築物之最低住宅樓層水平。
  - 毗連建築物的一段緊急車輛通道/行車道為香港主水平基準以上11.80米。
  - 毗連建築物的一段行人路為香港主水平基準以上11.90米。
  - 毗連建築物的一段行人小徑為香港主水平基準以上13.95米。

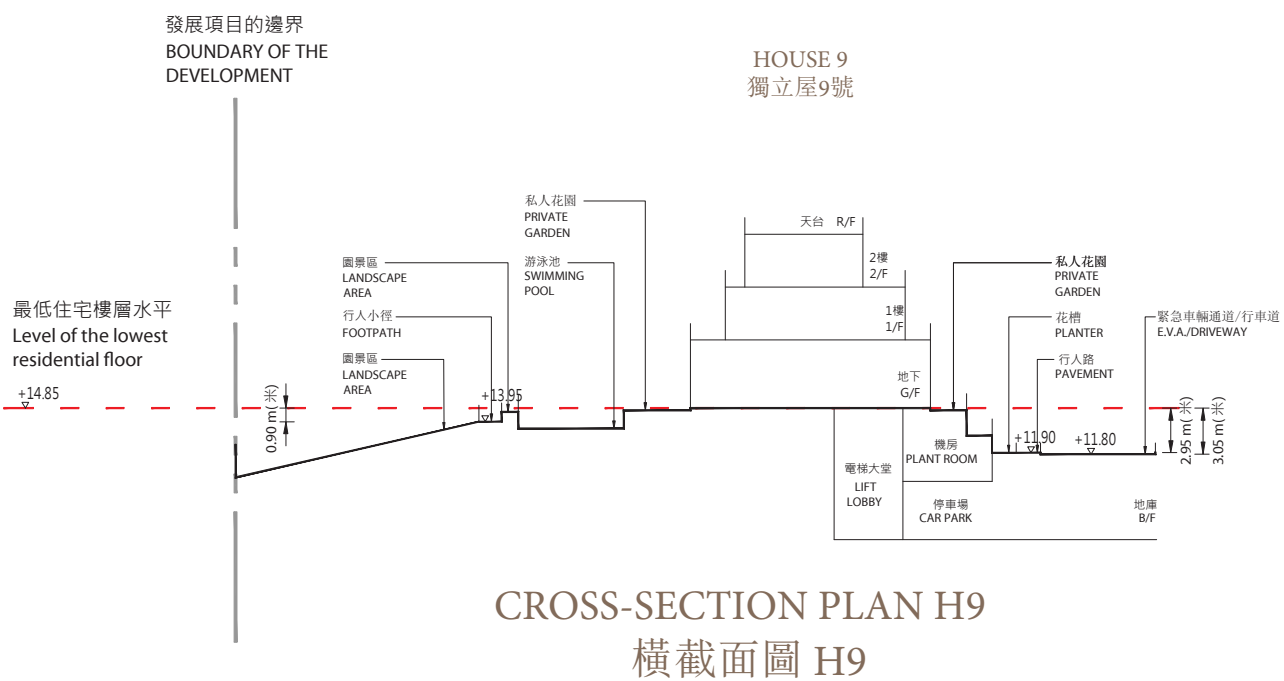
# CROSS-SECTION PLAN OF BUILDING IN THE DEVELOPMENT

## 發展項目中的建築物的橫截面圖



- Notes:
- ▽ Denotes height (in metres) above the Hong Kong Principal Datum.
  - Dotted line denotes the level of the lowest residential floor.
  - The part of Emergency Vehicular Access (E.V.A.)/Driveway adjacent to the building is 11.80metres above the Hong Kong Principal Datum.
  - The part of pavement adjacent to the building is 11.90 metres above the Hong Kong Principal Datum.
  - The part of footpath adjacent to the building is 13.95 metres above the Hong Kong Principal Datum.

- 註:
- ▽ 代表香港主水平基準以上的高度(米)。
  - 虛線代表建築物之最低住宅樓層水平。
  - 毗連建築物的一段緊急車輛通道/行車道為香港主水平基準以上11.80米。
  - 毗連建築物的一段行人路為香港主水平基準以上11.90米。
  - 毗連建築物的一段行人小徑為香港主水平基準以上13.95米。

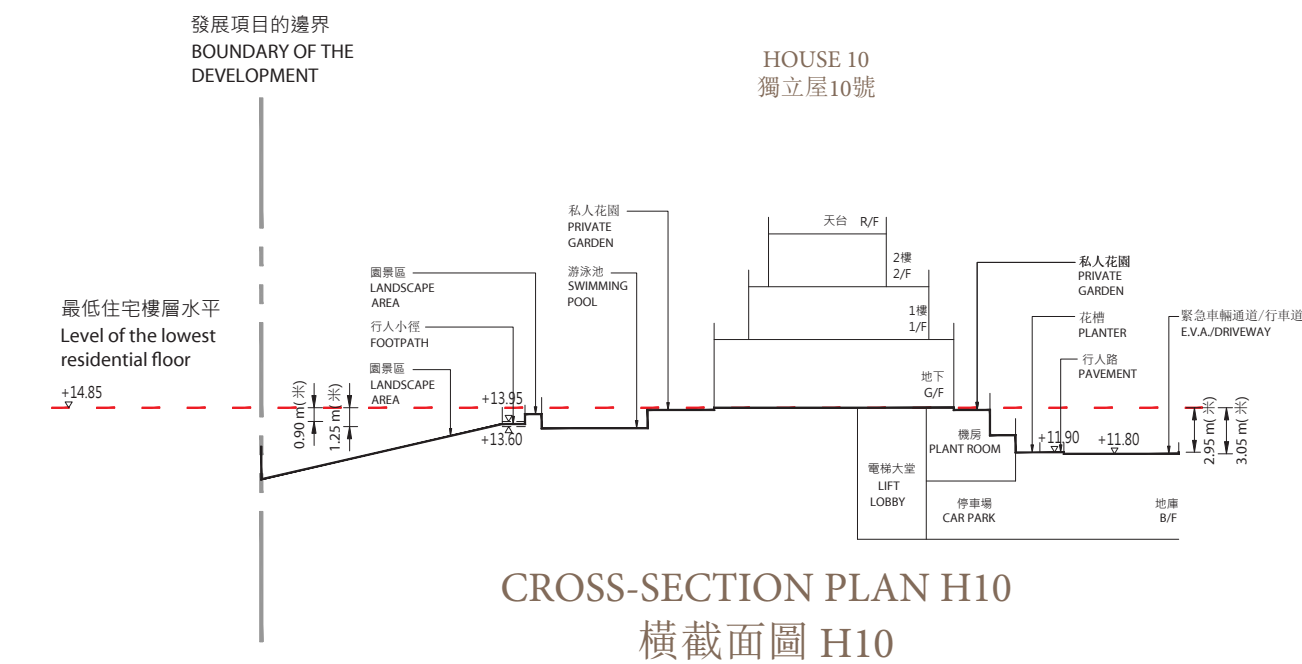
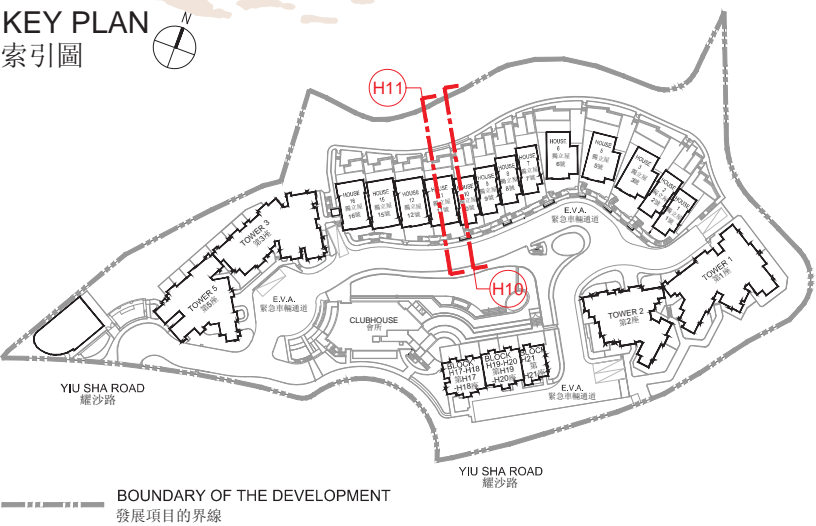


- Notes:
- ▽ Denotes height (in metres) above the Hong Kong Principal Datum.
  - Dotted line denotes the level of the lowest residential floor.
  - The part of Emergency Vehicular Access (E.V.A.)/Driveway adjacent to the building is 11.80 metres above the Hong Kong Principal Datum.
  - The part of pavement adjacent to the building is 11.90 metres above the Hong Kong Principal Datum.
  - The part of footpath adjacent to the building is 13.95 metres above the Hong Kong Principal Datum.

- 註:
- ▽ 代表香港主水平基準以上的高度(米)。
  - 虛線代表建築物之最低住宅樓層水平。
  - 毗連建築物的一段緊急車輛通道/行車道為香港主水平基準以上11.80米。
  - 毗連建築物的一段行人路為香港主水平基準以上11.90米。
  - 毗連建築物的一段行人小徑為香港主水平基準以上13.95米。

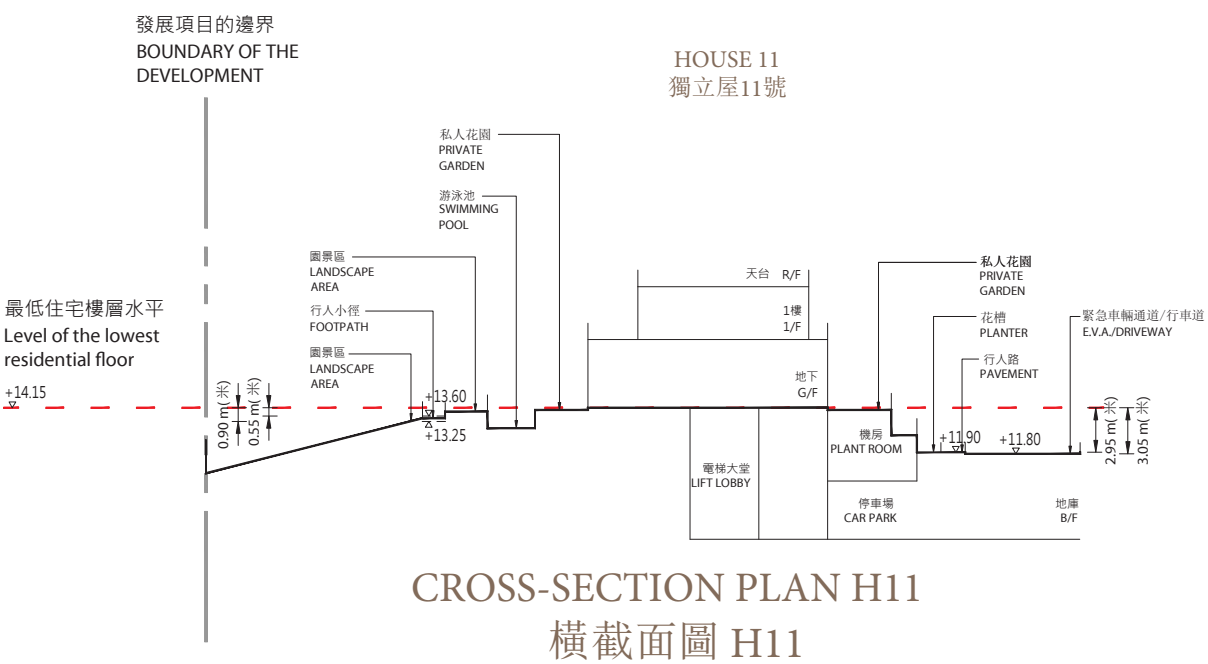
# CROSS-SECTION PLAN OF BUILDING IN THE DEVELOPMENT

## 發展項目中的建築物的橫截面圖



- Notes:
- ▽ Denotes height (in metres) above the Hong Kong Principal Datum.
  - Dotted line denotes the level of the lowest residential floor.
  - The part of Emergency Vehicular Access (E.V.A.)/Driveway adjacent to the building is 11.80 metres above the Hong Kong Principal Datum.
  - The part of pavement adjacent to the building is 11.90 metres above the Hong Kong Principal Datum.
  - The part of footpath adjacent to the building is 13.60 metres to 13.95 metres above the Hong Kong Principal Datum.

- 註:
- ▽ 代表香港主水平基準以上的高度(米)。
  - 虛線代表建築物之最低住宅樓層水平。
  - 毗連建築物的一段緊急車輛通道/行車道為香港主水平基準以上11.80米。
  - 毗連建築物的一段行人路為香港主水平基準以上11.90米。
  - 毗連建築物的一段行人小徑為香港主水平基準以上13.60米至13.95米。



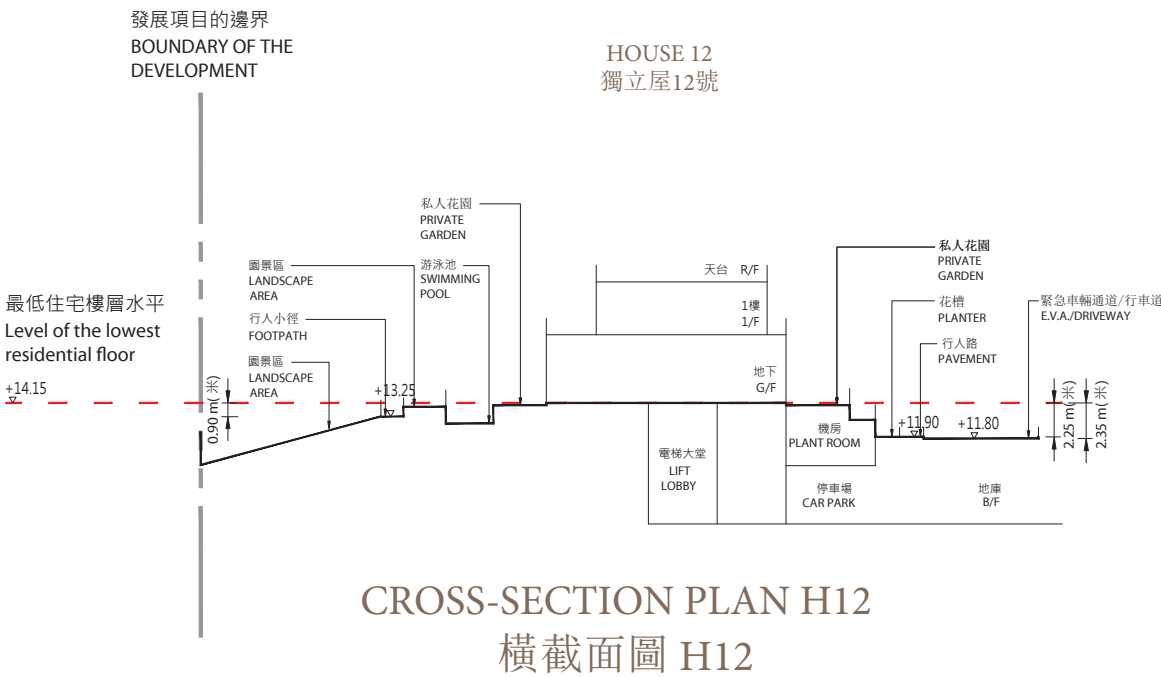
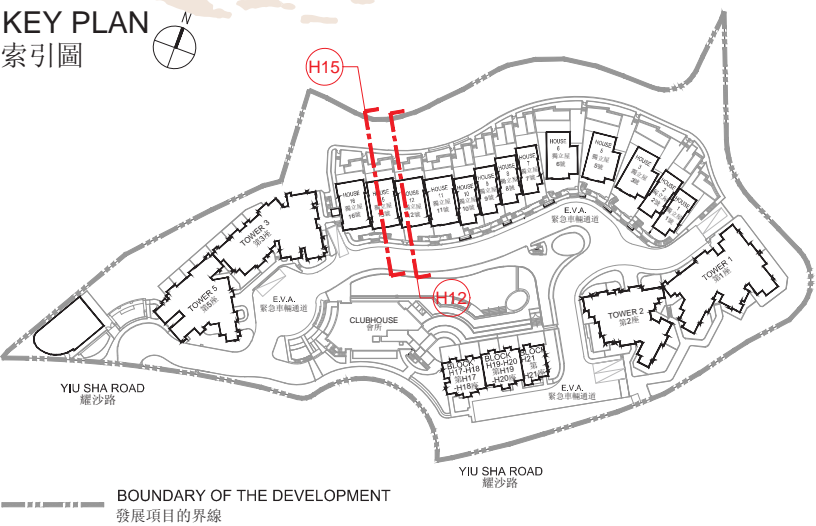
- Notes:
- ▽ Denotes height (in metres) above the Hong Kong Principal Datum.
  - Dotted line denotes the level of the lowest residential floor.
  - The part of Emergency Vehicular Access (E.V.A.)/Driveway adjacent to the building is 11.80 metres above the Hong Kong Principal Datum.
  - The part of pavement adjacent to the building is 11.90 metres above the Hong Kong Principal Datum.
  - The part of footpath adjacent to the building is 13.25 metres to 13.60 metres above the Hong Kong Principal Datum.

- 註:
- ▽ 代表香港主水平基準以上的高度(米)。
  - 虛線代表建築物之最低住宅樓層水平。
  - 毗連建築物的一段緊急車輛通道/行車道為香港主水平基準以上11.80米。
  - 毗連建築物的一段行人路為香港主水平基準以上11.90米。
  - 毗連建築物的一段行人小徑為香港主水平基準以上13.25米至13.60米。



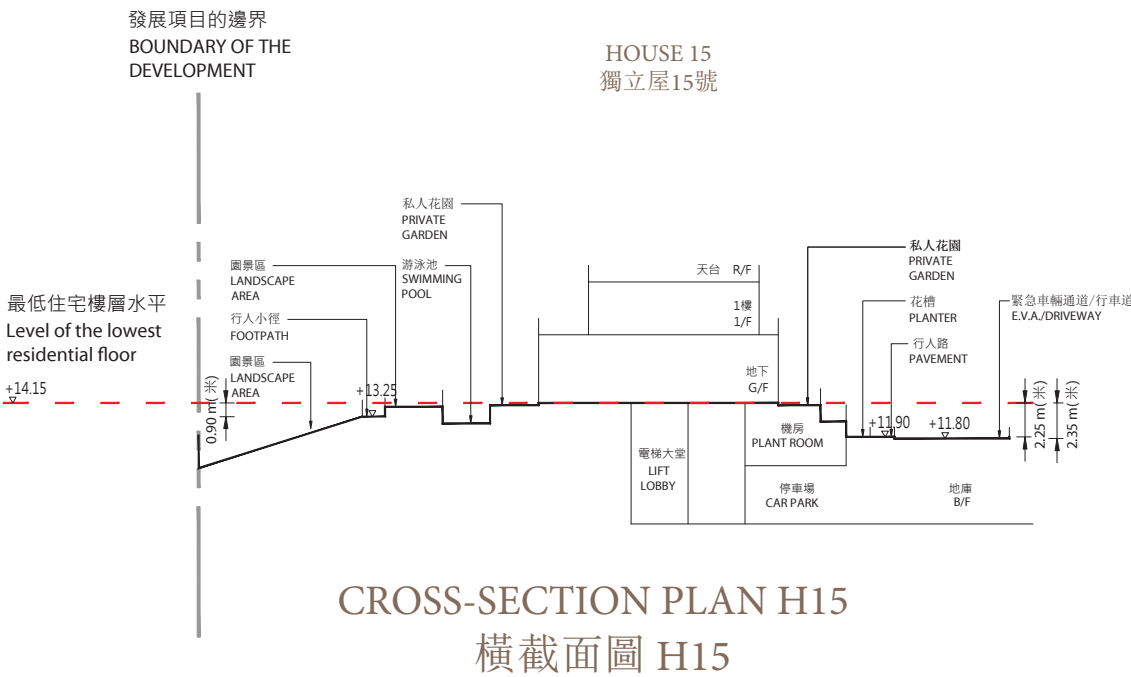
# CROSS-SECTION PLAN OF BUILDING IN THE DEVELOPMENT

## 發展項目中的建築物的橫截面圖



- Notes:
- ▽ Denotes height (in metres) above the Hong Kong Principal Datum.
  - Dotted line denotes the level of the lowest residential floor.
  - The part of Emergency Vehicular Access (E.V.A.)/Driveway adjacent to the building is 11.80 metres above the Hong Kong Principal Datum.
  - The part of pavement adjacent to the building is 11.90 metres above the Hong Kong Principal Datum.
  - The part of footpath adjacent to the building is 13.25 metres above the Hong Kong Principal Datum.

- 註:
- ▽ 代表香港主水平基準以上的高度(米)。
  - 虛線代表建築物之最低住宅樓層水平。
  - 毗連建築物的一段緊急車輛通道/行車道為香港主水平基準以上11.80米。
  - 毗連建築物的一段行人路為香港主水平基準以上11.90米。
  - 毗連建築物的一段行人小徑為香港主水平基準以上13.25米。



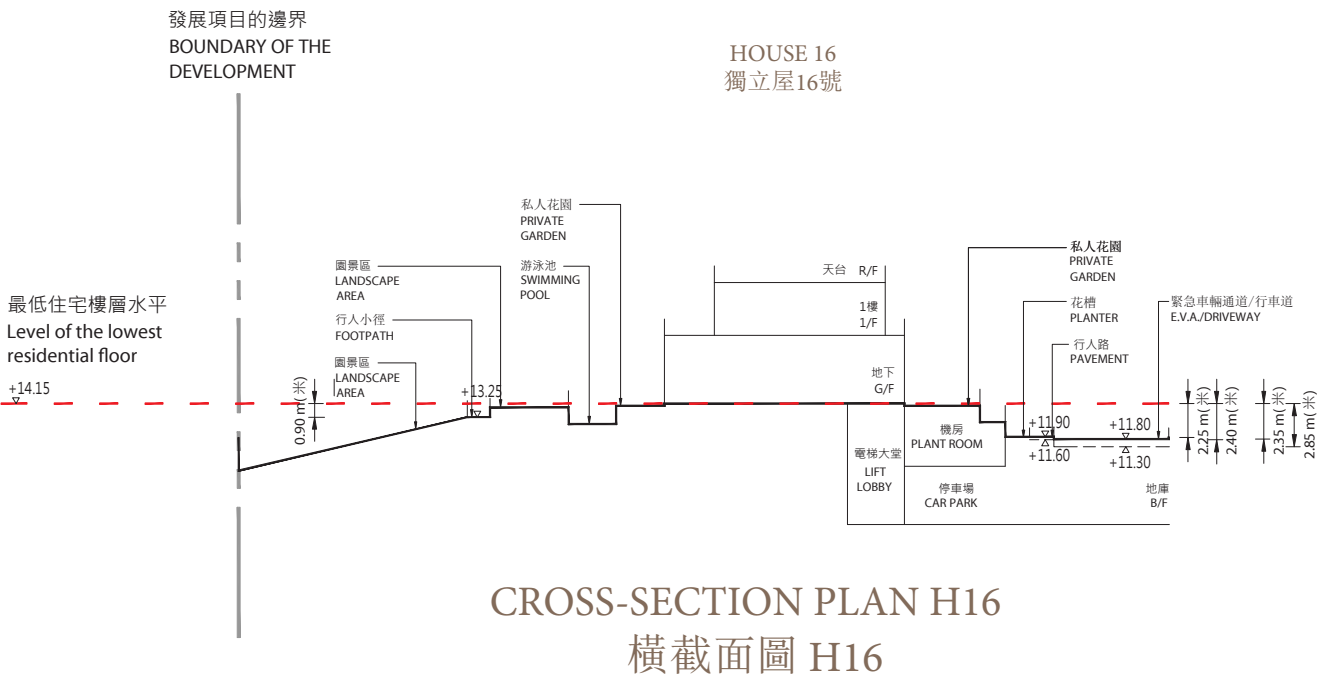
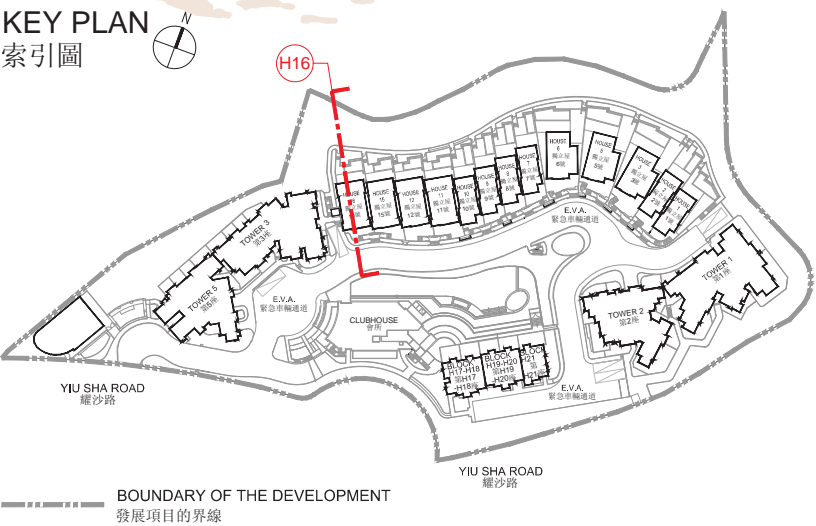
- Notes:
- ▽ Denotes height (in metres) above the Hong Kong Principal Datum.
  - Dotted line denotes the level of the lowest residential floor.
  - The part of Emergency Vehicular Access (E.V.A.)/Driveway adjacent to the building is 11.80 metres above the Hong Kong Principal Datum.
  - The part of pavement adjacent to the building is 11.90 metres above the Hong Kong Principal Datum.
  - The part of footpath adjacent to the building is 13.25 metres above the Hong Kong Principal Datum.

- 註:
- ▽ 代表香港主水平基準以上的高度(米)。
  - 虛線代表建築物之最低住宅樓層水平。
  - 毗連建築物的一段緊急車輛通道/行車道為香港主水平基準以上11.80米。
  - 毗連建築物的一段行人路為香港主水平基準以上11.90米。
  - 毗連建築物的一段行人小徑為香港主水平基準以上13.25米。



# CROSS-SECTION PLAN OF BUILDING IN THE DEVELOPMENT

## 發展項目中的建築物的橫截面圖



- Notes:
- ▽ Denotes height (in metres) above the Hong Kong Principal Datum.
  - Dotted line denotes the level of the lowest residential floor.
  - The part of Emergency Vehicular Access (E.V.A.)/Driveway adjacent to the building is 11.30 metres to 11.80 metres above the Hong Kong Principal Datum.
  - The part of pavement adjacent to the building is 11.60 metres to 11.90 metres above the Hong Kong Principal Datum.
  - The part of footpath adjacent to the building is 13.25 metres above the Hong Kong Principal Datum.

- 註:
- ▽ 代表香港主水平基準以上的高度(米)。
  - 虛線代表建築物之最低住宅樓層水平。
  - 毗連建築物的一段緊急車輛通道/行車道為香港主水平基準以上11.30米至11.80米。
  - 毗連建築物的一段行人路為香港主水平基準以上11.60米至11.90米。
  - 毗連建築物的一段行人小徑為香港主水平基準以上13.25米。