

This blank area falls outside the coverage of the relevant Aerial Photograph
鳥瞰照片並不覆蓋本空白範圍

● Location of the Development
發展項目的位置

Survey and Mapping Office, Lands Department, The Government of HKSAR © Copyright reserved-reproduction by permission only.

香港特別行政區政府地政總署測繪處 © 版權所有，未經許可，不得複製。

Adopted from part of the aerial photograph taken by the Survey and Mapping Office, Lands Department at a flying height of 2,000 feet, photo No. E220185C, date of flight: 20th March 2024.

摘錄自地政總署測繪處在2,000呎的飛行高度拍攝之鳥瞰照片，照片編號E220185C，飛行日期：2024年3月20日。

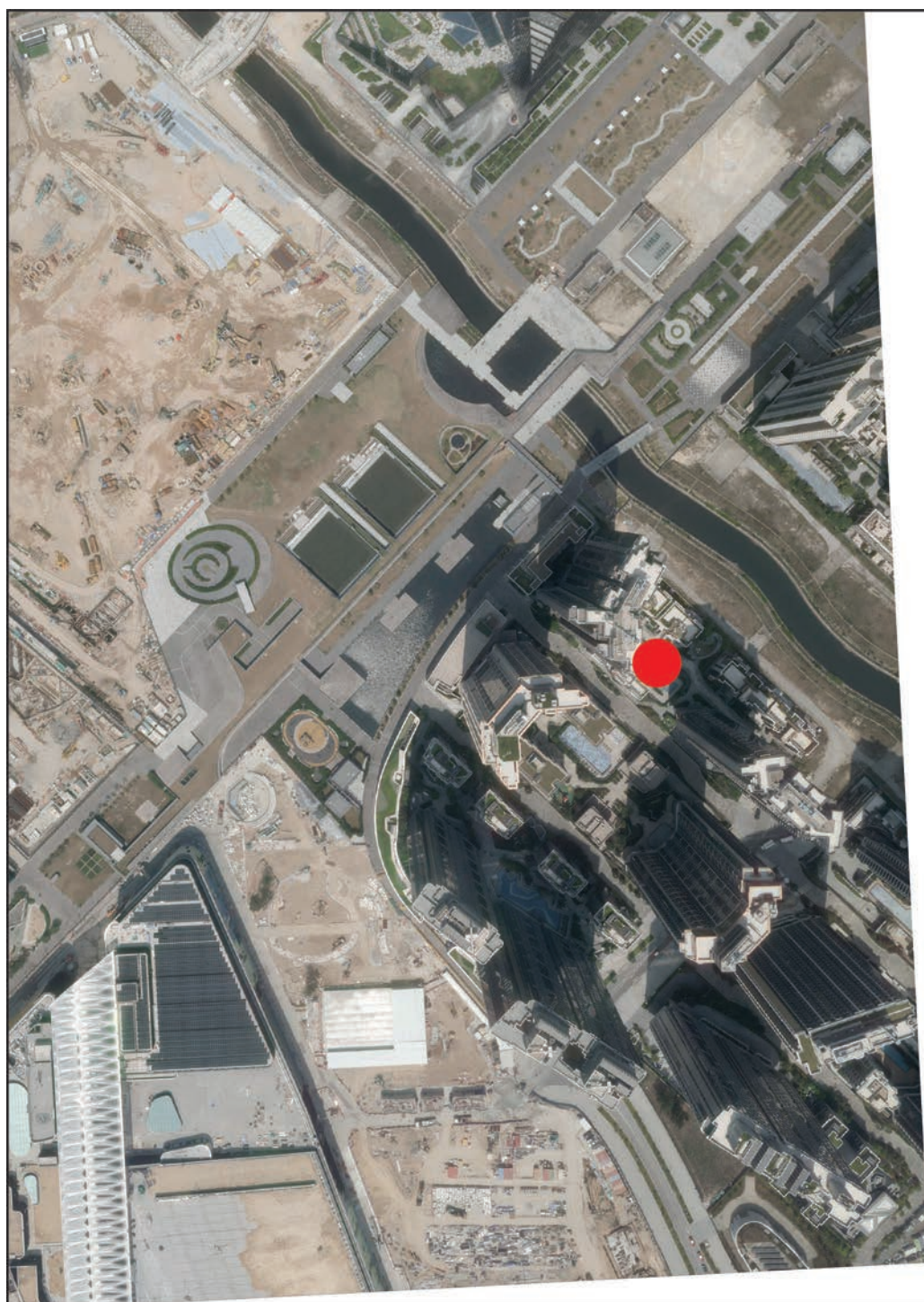
This blank area falls outside the coverage of the relevant Aerial Photograph
鳥瞰照片並不覆蓋本空白範圍

Notes:

1. Copy of the aerial photograph of the Development is available for free inspection at the sales offices during opening hours.
2. The aerial photograph may show more than the area required under the Residential Properties (First-hand Sales) Ordinance due to technical reason that the boundary of the Development is irregular.

備註：

1. 發展項目的鳥瞰照片之副本可於售樓處開放時間內免費查閱。
2. 由於發展項目的邊界不規則的技術原因，此照片所顯示的範圍可能超過《一手住宅物業銷售條例》所規定的範圍。



This blank area falls outside the coverage of the relevant Aerial Photograph
鳥瞰照片並不覆蓋本空白範圍

Adopted from part of the aerial photograph taken by the Survey and Mapping Office, Lands Department at a flying height of 2,000 feet, photo No. E220187C, date of flight: 20th March 2024.

摘錄自地政總署測繪處在2,000呎的飛行高度拍攝之鳥瞰照片，照片編號E220187C，飛行日期：2024年3月20日。

● Location of the Development
發展項目的位置

Survey and Mapping Office, Lands Department, The Government of HKSAR © Copyright reserved-reproduction by permission only.

香港特別行政區政府地政總署測繪處 © 版權所有，未經許可，不得複製。

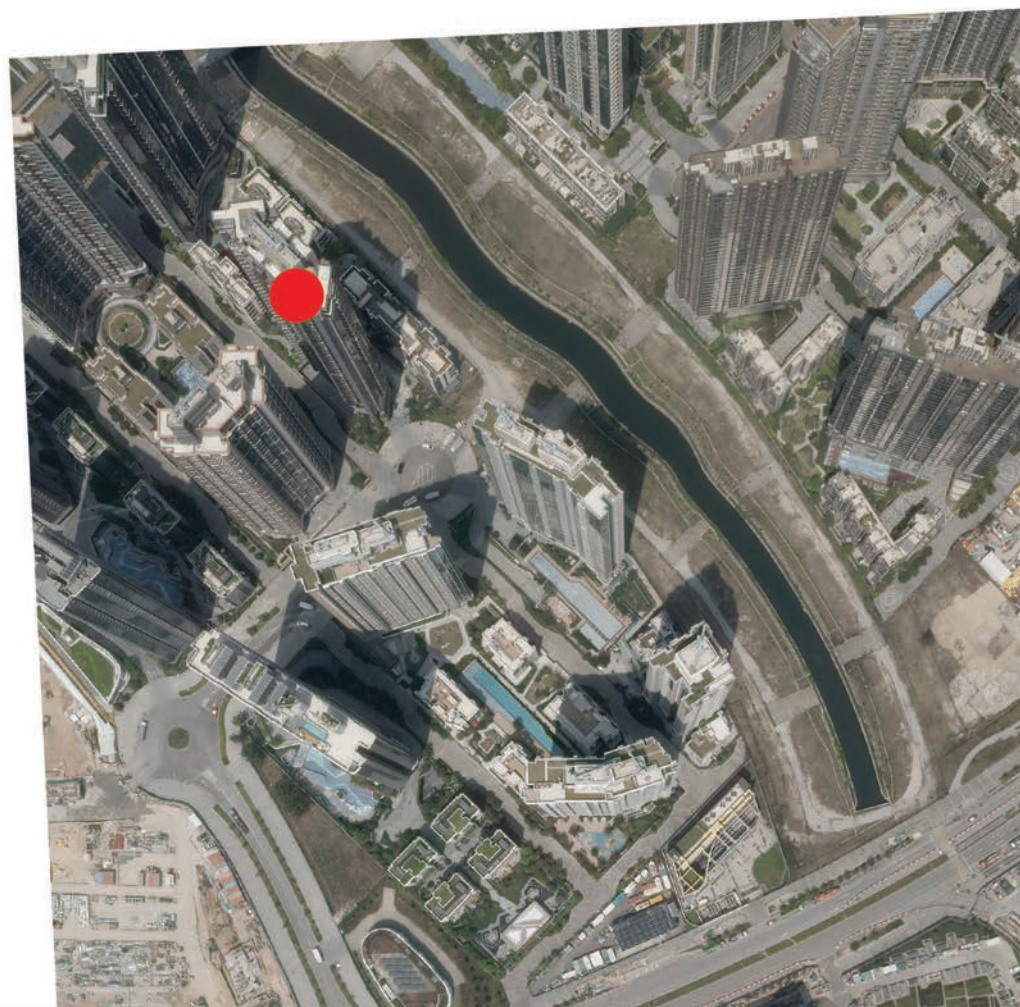
Notes:

1. Copy of the aerial photograph of the Development is available for free inspection at the sales offices during opening hours.
2. The aerial photograph may show more than the area required under the Residential Properties (First-hand Sales) Ordinance due to technical reason that the boundary of the Development is irregular.

備註：

1. 發展項目的鳥瞰照片之副本可於售樓處開放時間內免費查閱。
2. 由於發展項目的邊界不規則的技術原因，此照片所顯示的範圍可能超過《一手住宅物業銷售條例》所規定的範圍。

This blank area falls outside the coverage of the relevant Aerial Photograph
鳥瞰照片並不覆蓋本空白範圍



Adopted from part of the aerial photograph taken by the Survey and Mapping Office, Lands Department at a flying height of 2,000 feet, photo No. E220406C, date of flight: 20th March 2024.

摘錄自地政總署測繪處在2,000呎的飛行高度拍攝之鳥瞰照片，照片編號E220406C，飛行日期：2024年3月20日。

● Location of the Development
發展項目的位置

Notes:

1. Copy of the aerial photograph of the Development is available for free inspection at the sales offices during opening hours.
2. The aerial photograph may show more than the area required under the Residential Properties (First-hand Sales) Ordinance due to technical reason that the boundary of the Development is irregular.

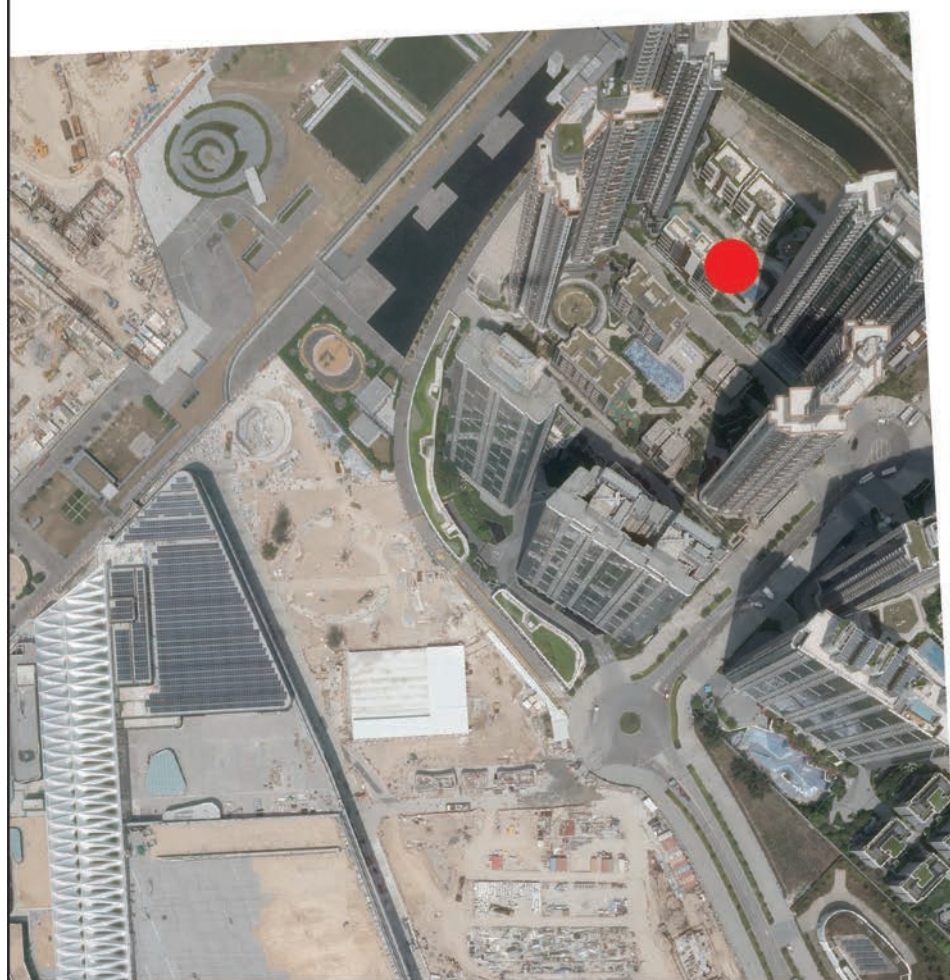
備註：

1. 發展項目的鳥瞰照片之副本可於售樓處開放時間內免費查閱。
2. 由於發展項目的邊界不規則的技術原因，此照片所顯示的範圍可能超過《一手住宅物業銷售條例》所規定的範圍。

Survey and Mapping Office, Lands Department, The Government of HKSAR © Copyright reserved-reproduction by permission only.

香港特別行政區政府地政總署測繪處 © 版權所有，未經許可，不得複製。

This blank area falls outside the coverage of the relevant Aerial Photograph
鳥瞰照片並不覆蓋本空白範圍



Adopted from part of the aerial photograph taken by the Survey and Mapping Office, Lands Department at a flying height of 2,000 feet, photo No. E220408C, date of flight: 20th March 2024.

摘錄自地政總署測繪處在2,000呎的飛行高度拍攝之鳥瞰照片，照片編號E220408C，飛行日期：2024年3月20日。

● Location of the Development
發展項目的位置

Notes:

1. Copy of the aerial photograph of the Development is available for free inspection at the sales offices during opening hours.
2. The aerial photograph may show more than the area required under the Residential Properties (First-hand Sales) Ordinance due to technical reason that the boundary of the Development is irregular.

備註：

1. 發展項目的鳥瞰照片之副本可於售樓處開放時間內免費查閱。
2. 由於發展項目的邊界不規則的技術原因，此照片所顯示的範圍可能超過《一手住宅物業銷售條例》所規定的範圍。

Survey and Mapping Office, Lands Department, The Government of HKSAR © Copyright reserved-reproduction by permission only.

香港特別行政區政府地政總署測繪處 © 版權所有，未經許可，不得複製。