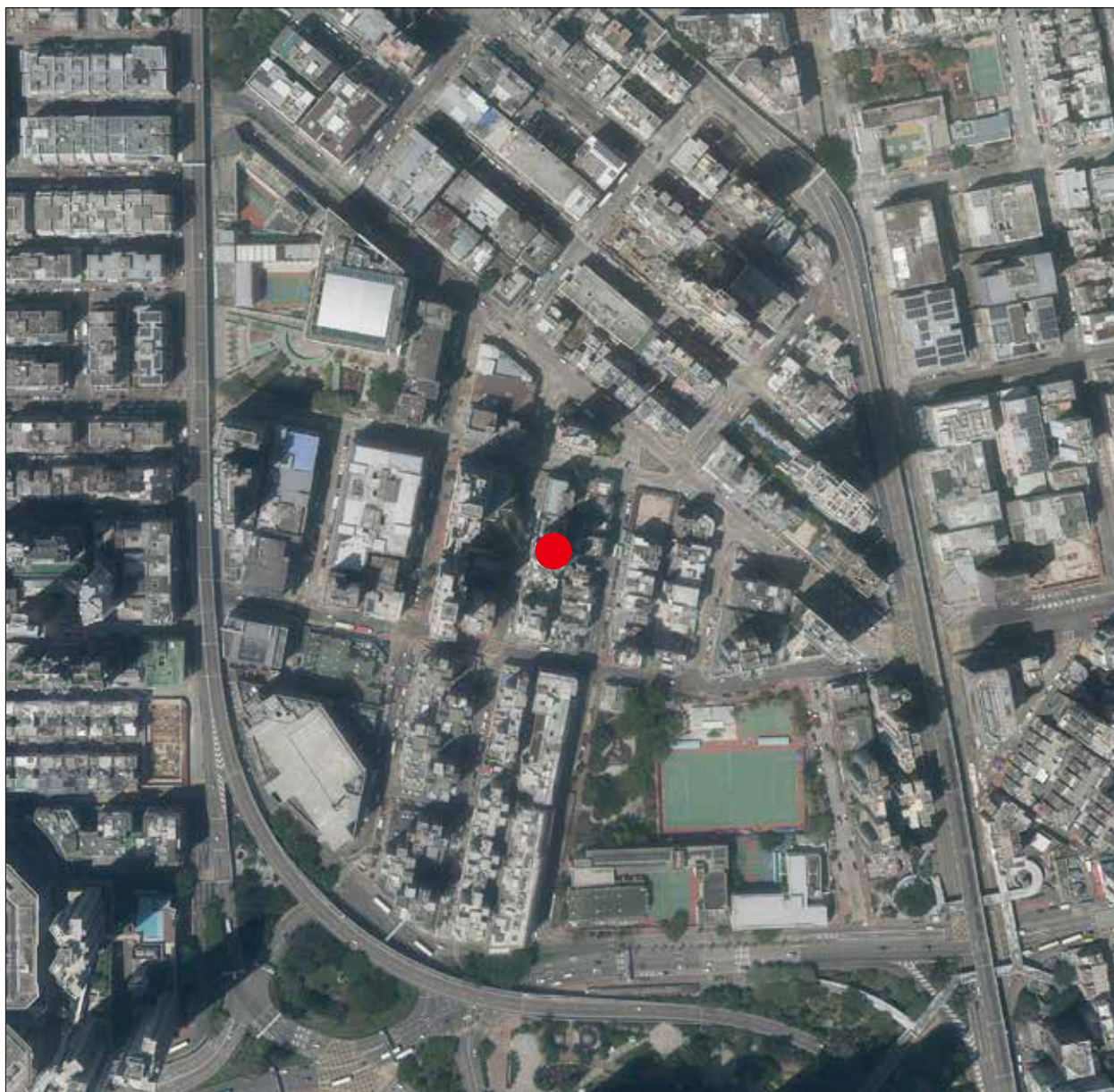


## 8 AERIAL PHOTOGRAPH OF THE DEVELOPMENT 發展項目的鳥瞰照片



● Location of the Development  
發展項目的位置

### Notes:

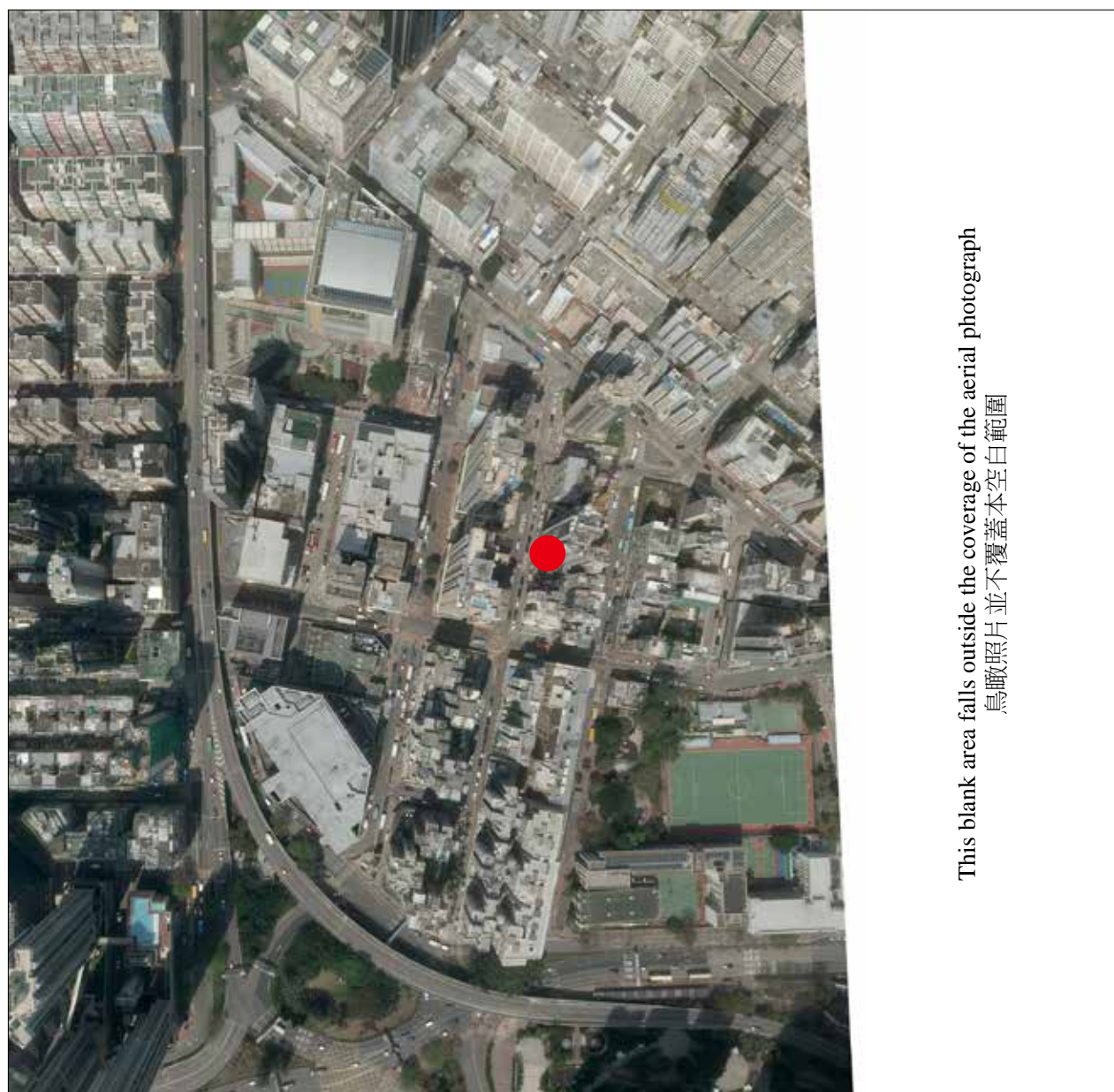
1. The above aerial photograph is taken at a flying height of 6,900 feet on 10 April 2022 (Photo No. E165649C).
2. Survey and Mapping Office, Lands Department, The Government of HKSAR © Copyright reserved – reproduction by permission only.
3. Due to technical reasons (such as the shape of the Development), the aerial photograph has shown area more than that required under the Residential Properties (First-hand Sales) Ordinance.
4. The Vendor also advises purchasers to conduct on-site visit for a better understanding of the development site, its surrounding environment and the public facilities nearby.
5. Copy of the aerial photograph of the Development is available for inspection at the sales office(s) during opening hours.

### 備註：

1. 上述鳥瞰照片於2022年4月10日在6,900呎的飛行高度拍攝(照片編號為E165649C)。
2. 香港特別行政區政府地政總署測繪處版權所有，未經許可，不得複製。
3. 因技術原因(例如發展項目之形狀)、鳥瞰照片所顯示之範圍多於《一手住宅物業銷售條例》所要求顯示的範圍。
4. 賣方亦建議買方到該發展地盤作實地考察，以獲取對該發展地盤、以及周邊地區的環境及附近的公共設施有較佳的了解。
5. 發展項目的鳥瞰照片之副本可於售樓處開放時間內查閱。



## 8 AERIAL PHOTOGRAPH OF THE DEVELOPMENT 發展項目的鳥瞰照片



This blank area falls outside the coverage of the aerial photograph  
鳥瞰照片並不覆蓋本空白範圍

● Location of the Development  
發展項目的位置

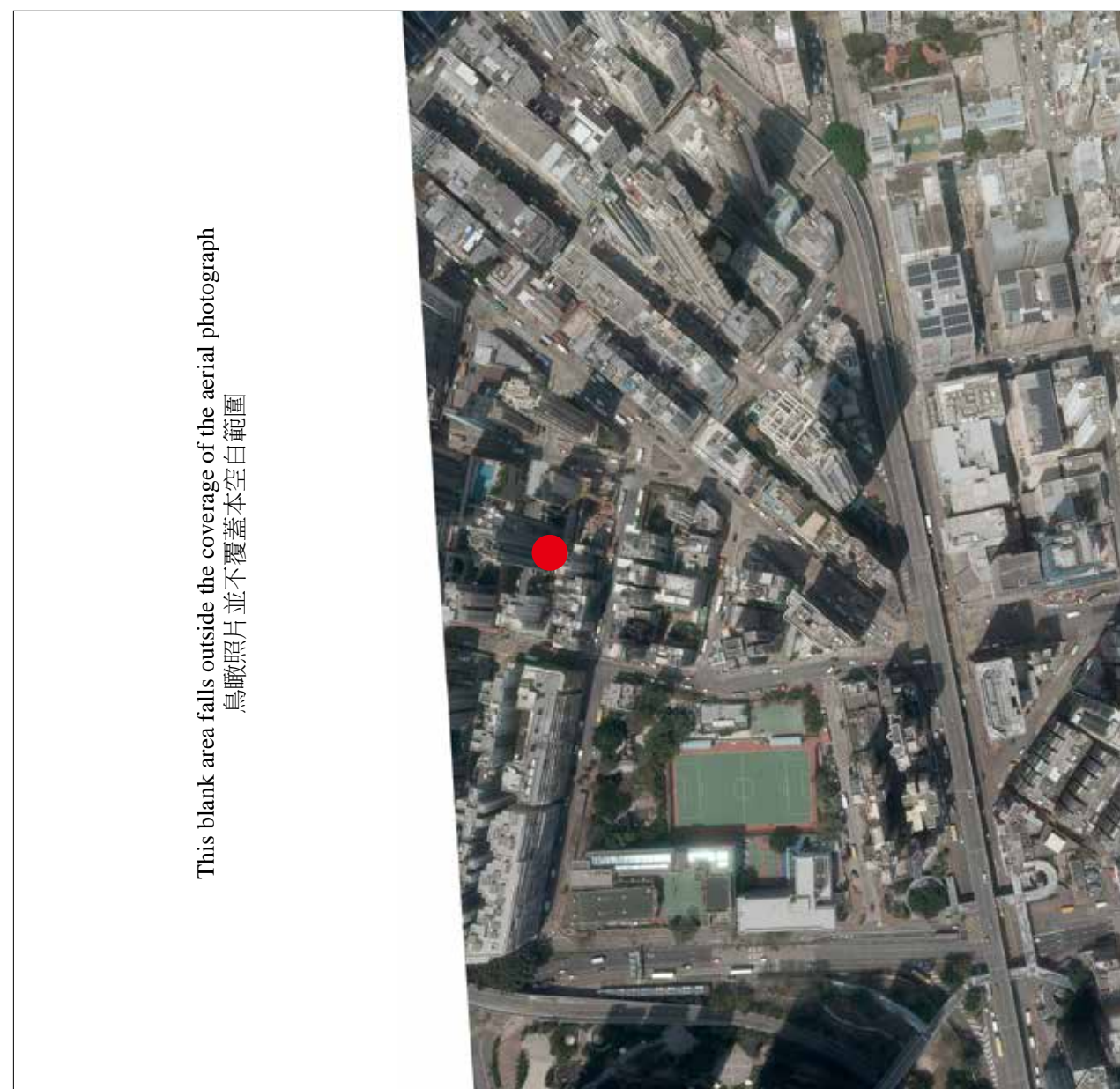
### Notes:

1. The above aerial photograph is taken at a flying height of 2,000 feet on 20 March 2024 (Photo No. E220894C).
2. Survey and Mapping Office, Lands Department, The Government of HKSAR © Copyright reserved – reproduction by permission only.
3. Due to technical reasons (such as the shape of the Development), the aerial photograph has shown area more than that required under the Residential Properties (First-hand Sales) Ordinance.
4. The Vendor also advises purchasers to conduct on-site visit for a better understanding of the development site, its surrounding environment and the public facilities nearby.
5. Copy of the aerial photograph of the Development is available for inspection at the sales office(s) during opening hours.

### 備註：

1. 上述鳥瞰照片於2024年3月20日在2,000呎的飛行高度拍攝(照片編號為E220894C)。
2. 香港特別行政區政府地政總署測繪處版權所有，未經許可，不得複製。
3. 因技術原因(例如發展項目之形狀)、鳥瞰照片所顯示之範圍多於《一手住宅物業銷售條例》所要求顯示的範圍。
4. 賣方亦建議買方到該發展地盤作實地考察，以獲取對該發展地盤、以及周邊地區的環境及附近的公共設施有較佳的了解。
5. 發展項目的鳥瞰照片之副本可於售樓處開放時間內查閱。

## 8 AERIAL PHOTOGRAPH OF THE DEVELOPMENT 發展項目的鳥瞰照片



● Location of the Development  
發展項目的位置

### Notes:

1. The above aerial photograph is taken at a flying height of 2,000 feet on 20 March 2024 (Photo No. E220892C).
2. Survey and Mapping Office, Lands Department, The Government of HKSAR © Copyright reserved – reproduction by permission only.
3. Due to technical reasons (such as the shape of the Development), the aerial photograph has shown area more than that required under the Residential Properties (First-hand Sales) Ordinance.
4. The Vendor also advises purchasers to conduct on-site visit for a better understanding of the development site, its surrounding environment and the public facilities nearby.
5. Copy of the aerial photograph of the Development is available for inspection at the sales office(s) during opening hours.

### 備註：

1. 上述鳥瞰照片於2024年3月20日在2,000呎的飛行高度拍攝(照片編號為E220892C)。
2. 香港特別行政區政府地政總署測繪處版權所有，未經許可，不得複製。
3. 因技術原因(例如發展項目之形狀)、鳥瞰照片所顯示之範圍多於《一手住宅物業銷售條例》所要求顯示的範圍。
4. 賣方亦建議買方到該發展地盤作實地考察，以獲取對該發展地盤、以及周邊地區的環境及附近的公共設施有較佳的了解。
5. 發展項目的鳥瞰照片之副本可於售樓處開放時間內查閱。