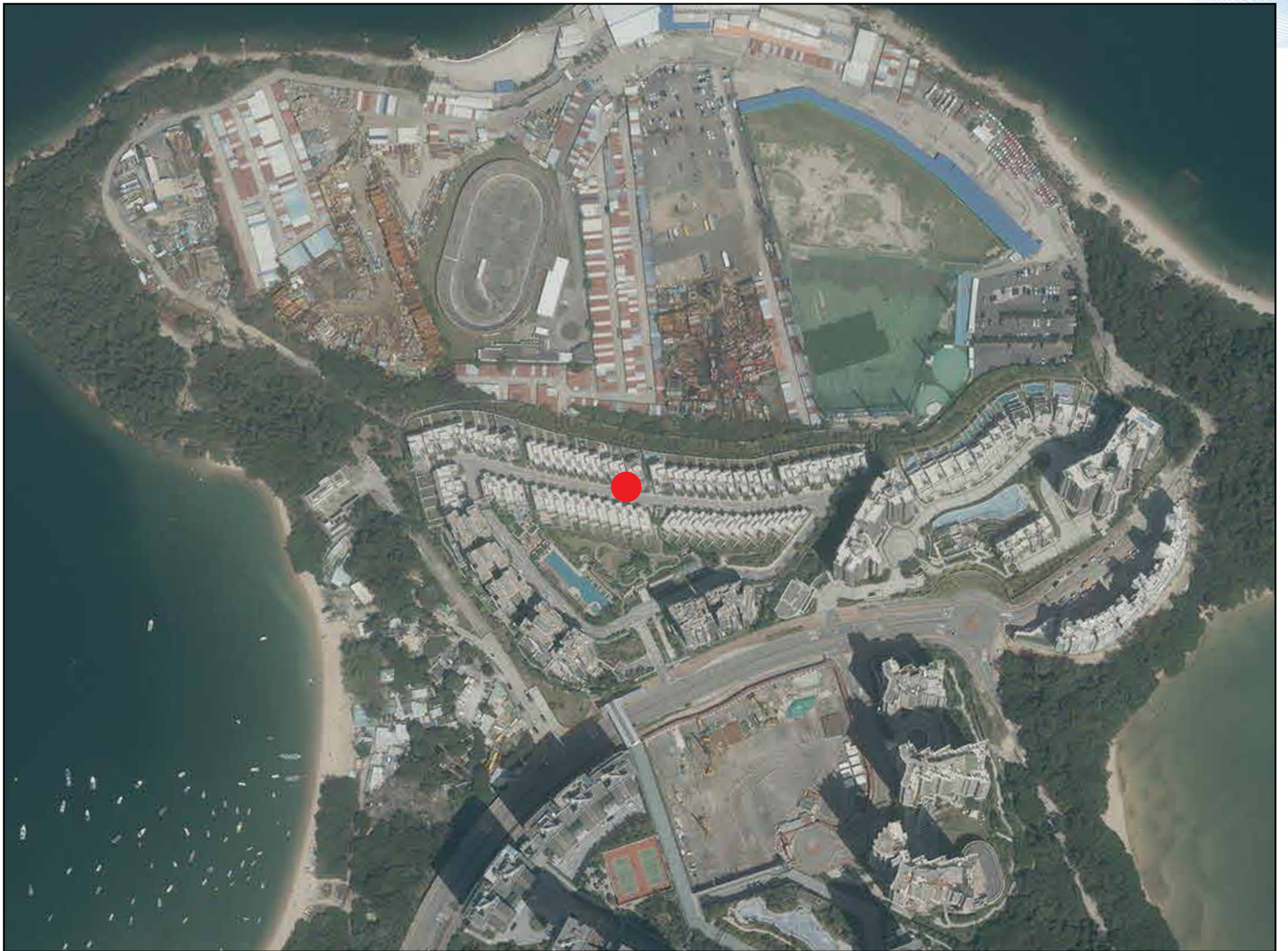


## AERIAL PHOTOGRAPH OF THE PHASE 期數的鳥瞰照片



### ● Location of the Phase 期數的位置

Survey and Mapping Office, Lands Department, The Government of HKSAR © Copyright reserved - reproduction by permission only.  
香港特別行政區政府地政總署測繪處 © 版權所有，未經許可，不得複製。

Adopted from part of the aerial photograph taken by the Survey and Mapping Office, Lands Department at a flying height of 6,000 feet, photo No. E155005C, date of flight 10th March 2022.

摘錄自地政總署測繪處在6,000呎的飛行高度拍攝之鳥瞰照片，照片編號E155005C，飛行日期：2022年3月10日。

#### Note :

1. Copy of the aerial photograph of the Phase is available for free inspection at the sales office during opening hours.
2. The aerial photograph may show more than the area required under the Residential Properties (First-hand Sales) Ordinance due to technical reason that the boundary of the Phase is irregular.

#### 備註：

1. 期數的鳥瞰照片之副本可於售樓處開放時間內免費查閱。
2. 由於期數的邊界不規則的技術原因，此照片所顯示的範圍可能超過《一手住宅物業銷售條例》所規定的範圍。



AERIAL PHOTOGRAPH OF THE PHASE  
期數的鳥瞰照片

These blank areas fall outside the coverage of the relevant Aerial Photograph  
鳥瞰照片並不覆蓋該等空白範圍



This blank area falls outside  
the coverage of  
the relevant Aerial Photograph  
鳥瞰照片並不覆蓋本空白範圍

● Location of the Phase  
期數的位置

Survey and Mapping Office, Lands Department, The Government of HKSAR © Copyright reserved - reproduction by permission only.  
香港特別行政區政府地政總署測繪處 © 版權所有，未經許可，不得複製。

Adopted from part of the aerial photograph taken by the Survey and Mapping Office, Lands Department at a flying height of 6,900 feet,  
photo No. E209233C, date of flight 4th October 2023.  
摘錄自地政總署測繪處在6,900呎的飛行高度拍攝之鳥瞰照片，照片編號E209233C，飛行日期：2023年10月4日。

- Notes :
- 1. Copy of the aerial photograph of the Phase is available for free inspection at the sales office during opening hours.
  - 2. The aerial photograph may show more than the area required under the Residential Properties (First-hand Sales) Ordinance due to technical reason that the boundary of the Phase is irregular.

- 備註：
- 1. 期數的鳥瞰照片之副本可於售樓處開放時間內免費查閱。
  - 2. 由於期數的邊界不規則的技術原因，此照片所顯示的範圍可能超過《一手住宅物業銷售條例》所規定的範圍。



AERIAL PHOTOGRAPH OF THE PHASE  
期數的鳥瞰照片



This blank area falls outside the coverage of  
the relevant Aerial Photograph  
鳥瞰照片並不覆蓋本空白範圍

● Location of the Phase  
期數的位置

Survey and Mapping Office, Lands Department, The Government of HKSAR © Copyright reserved - reproduction by permission only.  
香港特別行政區政府地政總署測繪處 © 版權所有，未經許可，不得複製。

Adopted from part of the aerial photograph taken by the Survey and Mapping Office, Lands Department at a flying height of 6,900 feet,  
photo No. E209234C, date of flight 4th October 2023.  
摘錄自地政總署測繪處在6,900呎的飛行高度拍攝之鳥瞰照片，照片編號E209234C，飛行日期：2023年10月4日。

Notes :

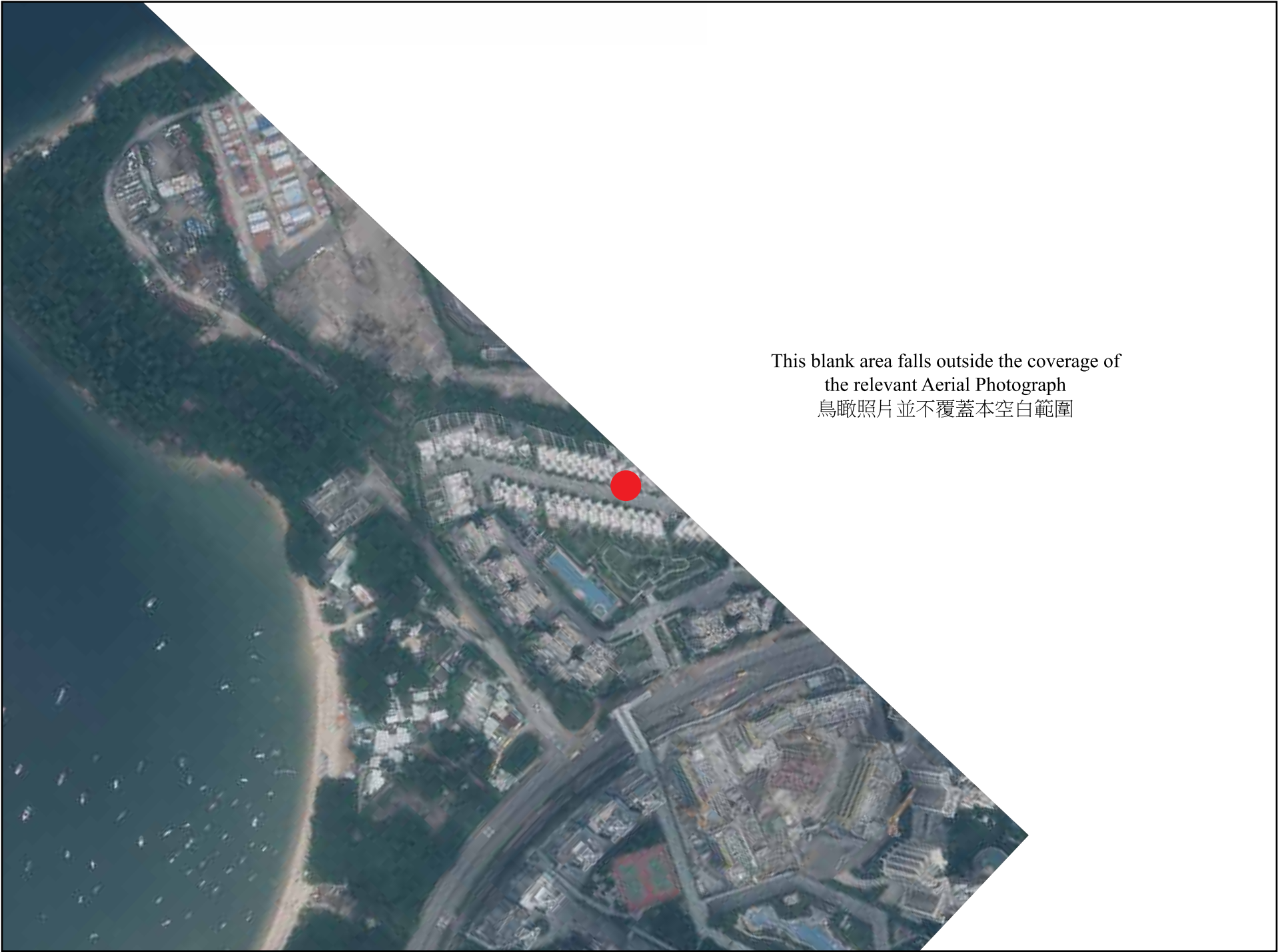
- 1. Copy of the aerial photograph of the Phase is available for free inspection at the sales office during opening hours.
- 2. The aerial photograph may show more than the area required under the Residential Properties (First-hand Sales) Ordinance due to technical reason that the boundary of the Phase is irregular.

備註：

- 1. 期數的鳥瞰照片之副本可於售樓處開放時間內免費查閱。
- 2. 由於期數的邊界不規則的技術原因，此照片所顯示的範圍可能超過《一手住宅物業銷售條例》所規定的範圍。



AERIAL PHOTOGRAPH OF THE PHASE  
期數的鳥瞰照片



● Location of the Phase  
期數的位置

Survey and Mapping Office, Lands Department, The Government of HKSAR © Copyright reserved - reproduction by permission only.  
香港特別行政區政府地政總署測繪處 © 版權所有，未經許可，不得複製。

Adopted from part of the aerial photograph taken by the Survey and Mapping Office, Lands Department at a flying height of 6,900 feet, photo No. E209285C, date of flight 4th October 2023.  
摘錄自地政總署測繪處在6,900呎的飛行高度拍攝之鳥瞰照片，照片編號E209285C，飛行日期：2023年10月4日。

- Notes :
- 1. Copy of the aerial photograph of the Phase is available for free inspection at the sales office during opening hours.
  - 2. The aerial photograph may show more than the area required under the Residential Properties (First-hand Sales) Ordinance due to technical reason that the boundary of the Phase is irregular.

- 備註：
- 1. 期數的鳥瞰照片之副本可於售樓處開放時間內免費查閱。
  - 2. 由於期數的邊界不規則的技術原因，此照片所顯示的範圍可能超過《一手住宅物業銷售條例》所規定的範圍。

## AERIAL PHOTOGRAPH OF THE PHASE 期數的鳥瞰照片



This blank area falls outside the coverage of the relevant Aerial Photograph  
鳥瞰照片並不覆蓋本空白範圍



### Location of the Phase 期數的位置

Survey and Mapping Office, Lands Department, The Government of HKSAR © Copyright reserved - reproduction by permission only.  
香港特別行政區政府地政總署測繪處 © 版權所有，未經許可，不得複製。

Adopted from part of the aerial photograph taken by the Survey and Mapping Office, Lands Department at a flying height of 3,000 feet, photo No. E219235C, date of flight 13th March 2024.

摘錄自地政總署測繪處在3,000呎的飛行高度拍攝之鳥瞰照片，照片編號E219235C，飛行日期：2024年3月13日。

#### Notes :

1. Copy of the aerial photograph of the Phase is available for free inspection at the sales office during opening hours.
2. The aerial photograph may show more than the area required under the Residential Properties (First-hand Sales) Ordinance due to technical reason that the boundary of the Phase is irregular.

#### 備註：

1. 期數的鳥瞰照片之副本可於售樓處開放時間內免費查閱。
2. 由於期數的邊界不規則的技術原因，此照片所顯示的範圍可能超過《一手住宅物業銷售條例》所規定的範圍。