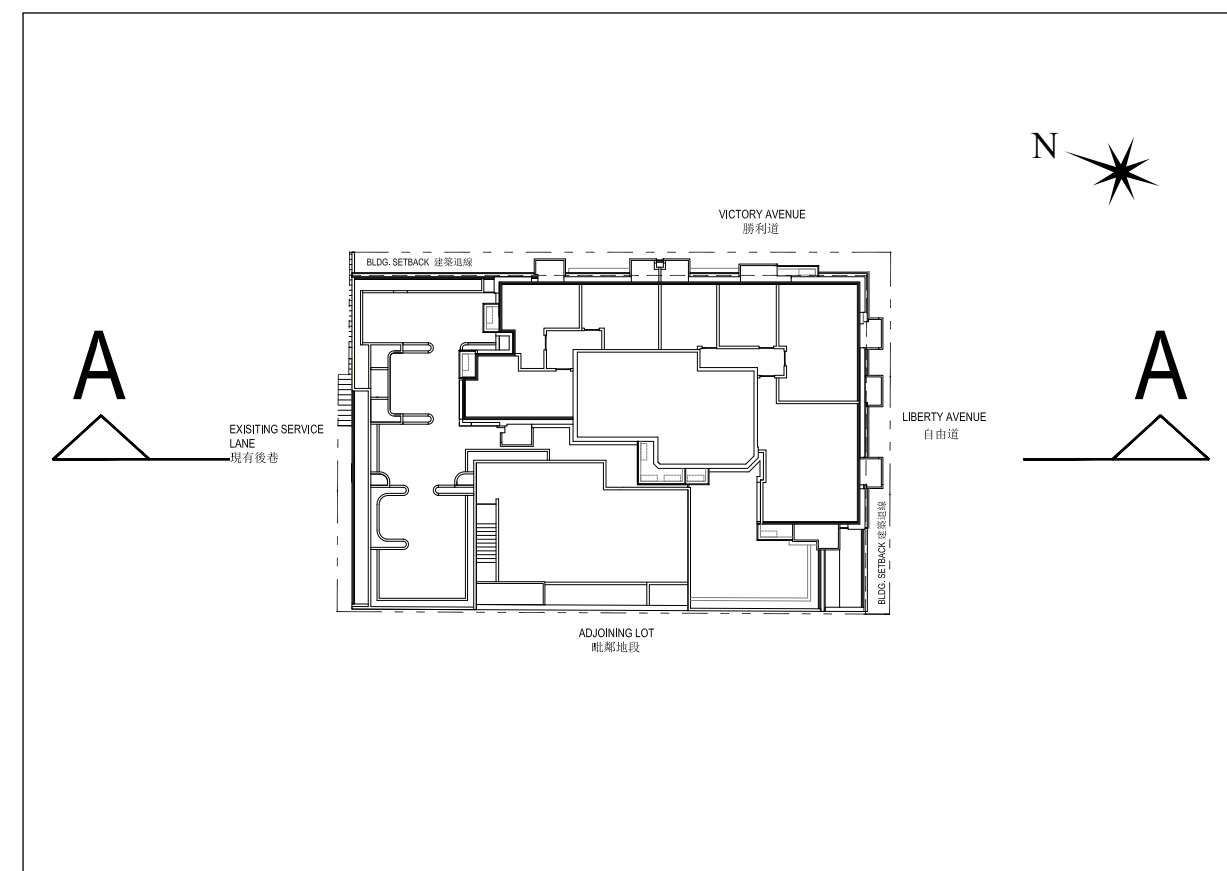
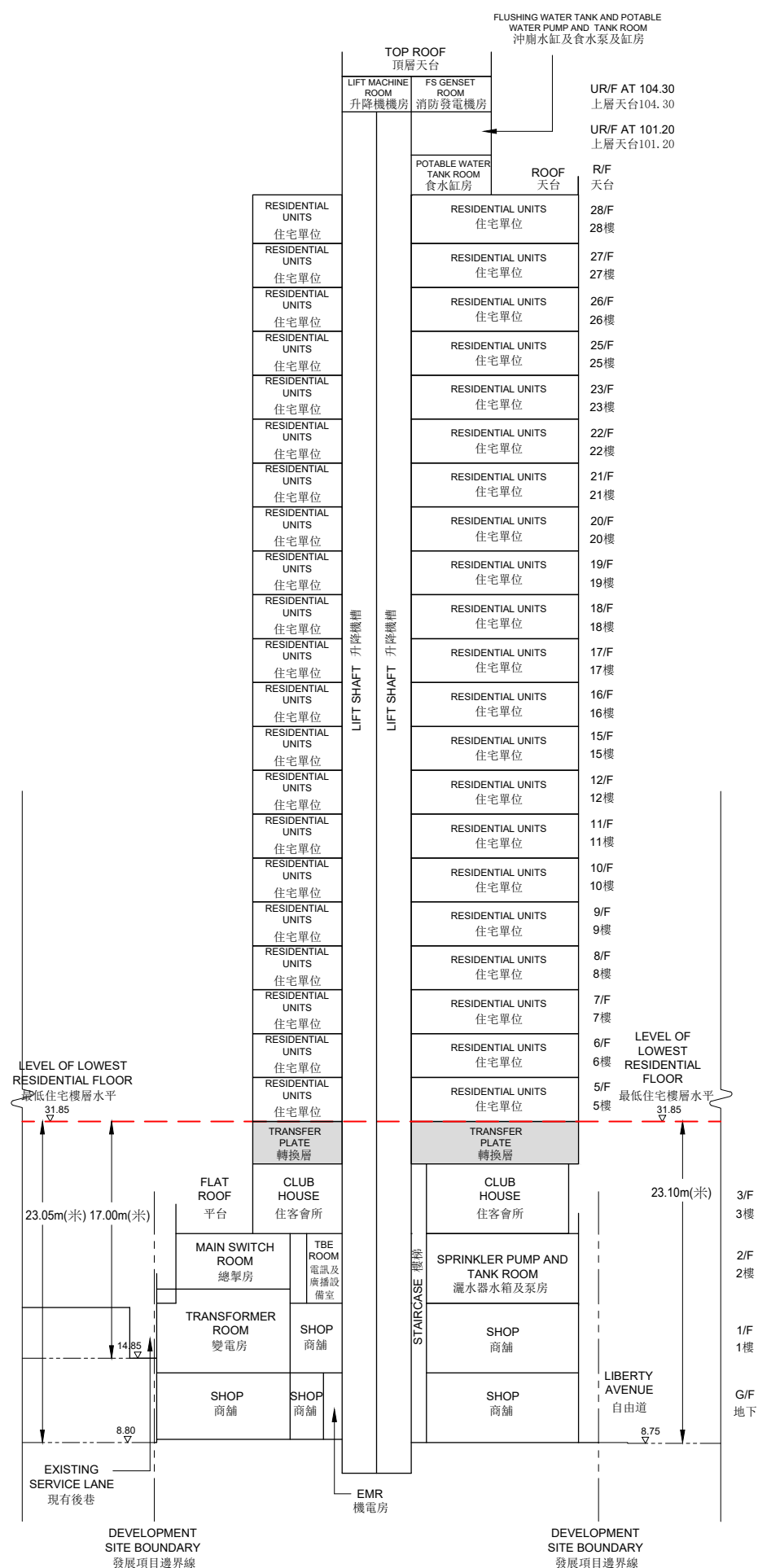


# 19 CROSS-SECTION PLAN OF BUILDING IN THE DEVELOPMENT

## 發展項目中的建築物的橫截面圖

CROSS-SECTION A-A  
橫切面圖 A-A



LEGEND 圖例

KEY PLAN 指示圖

- Development Site Boundary  
發展項目邊界線
- Building Setback Line  
建築退線

### Notes:

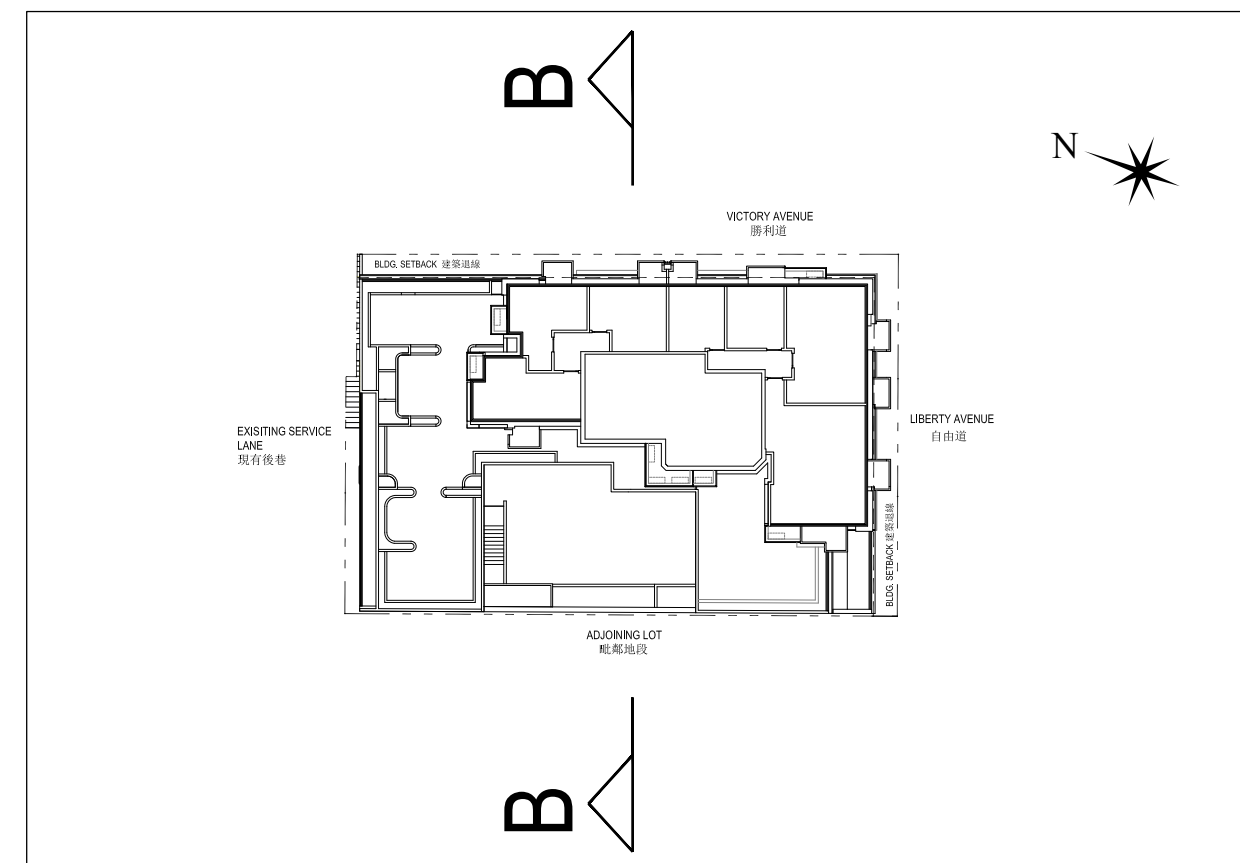
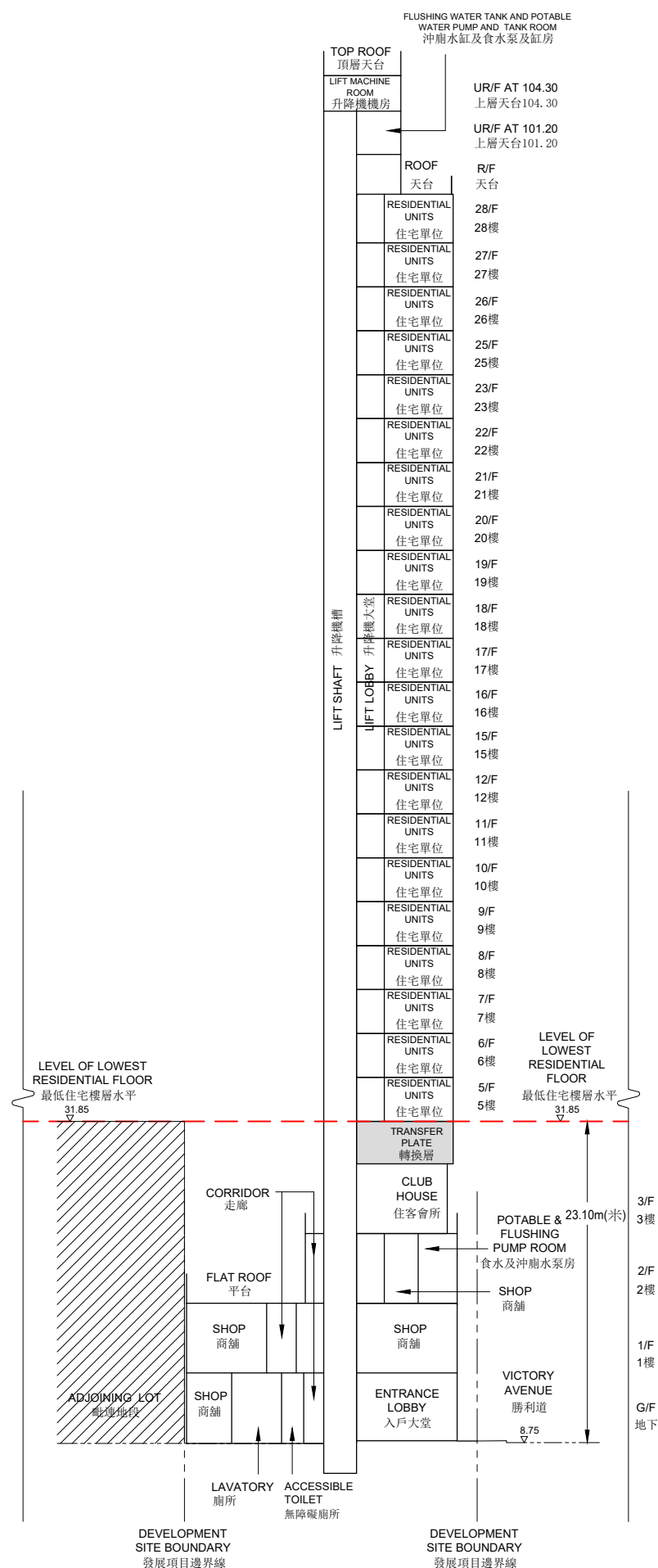
- (▽) denotes height (in metres) above the Hong Kong Principal Datum.
- (---) Dotted line denotes the level of the lowest residential floor.
- The level of lowest residential floor of the Development is 31.85 metres above Hong Kong Principal Datum (HKPD).
- The part of existing service lane adjacent to the north-west side of the Development is 8.80 to 14.85 metres above Hong Kong Principal Datum (HKPD).
- The part of Liberty Avenue adjacent to the south-east side of the Development is 8.75 metres above Hong Kong Principal Datum (HKPD).

### 備註:

- (▽)代表香港主水平基準以上的高度(米)。
- (---)虛線代表最低住宅樓層水平。
- 發展項目之最低層住宅為香港主水平基礎以上31.85米。
- 毗鄰建築物的西北面現有後巷一段為香港主水平基礎以上約8.80米至14.85米。
- 毗鄰建築物的東南面自由道一段為香港主水平基礎以上8.75米。

# 19 CROSS-SECTION PLAN OF BUILDING IN THE DEVELOPMENT 發展項目中的建築物的橫截面圖

CROSS-SECTION B-B  
橫切面圖 B-B



LEGEND 圖例

- Development Site Boundary (發展項目邊界線)
- Building Setback Line (建築退線)

KEY PLAN 指示圖

Notes:

- (▽) denotes height (in metres) above the Hong Kong Principal Datum.
- (-----) Dotted line denotes the level of the lowest residential floor.
- The level of lowest residential floor of the Development is 31.85 metres above Hong Kong Principal Datum (HKPD).
- The part of Victory Avenue adjacent to the north-east side of the Development is 8.75 metres above Hong Kong Principal Datum (HKPD).

備註：

- (▽)代表香港主水平基準以上的高度(米)。
- (-----)虛線代表最低住宅樓層水平。
- 發展項目之最低層住宅為香港主水平基礎以上31.85米。
- 毗鄰建築物的東北面勝利道一段為香港主水平基礎以上8.75米。