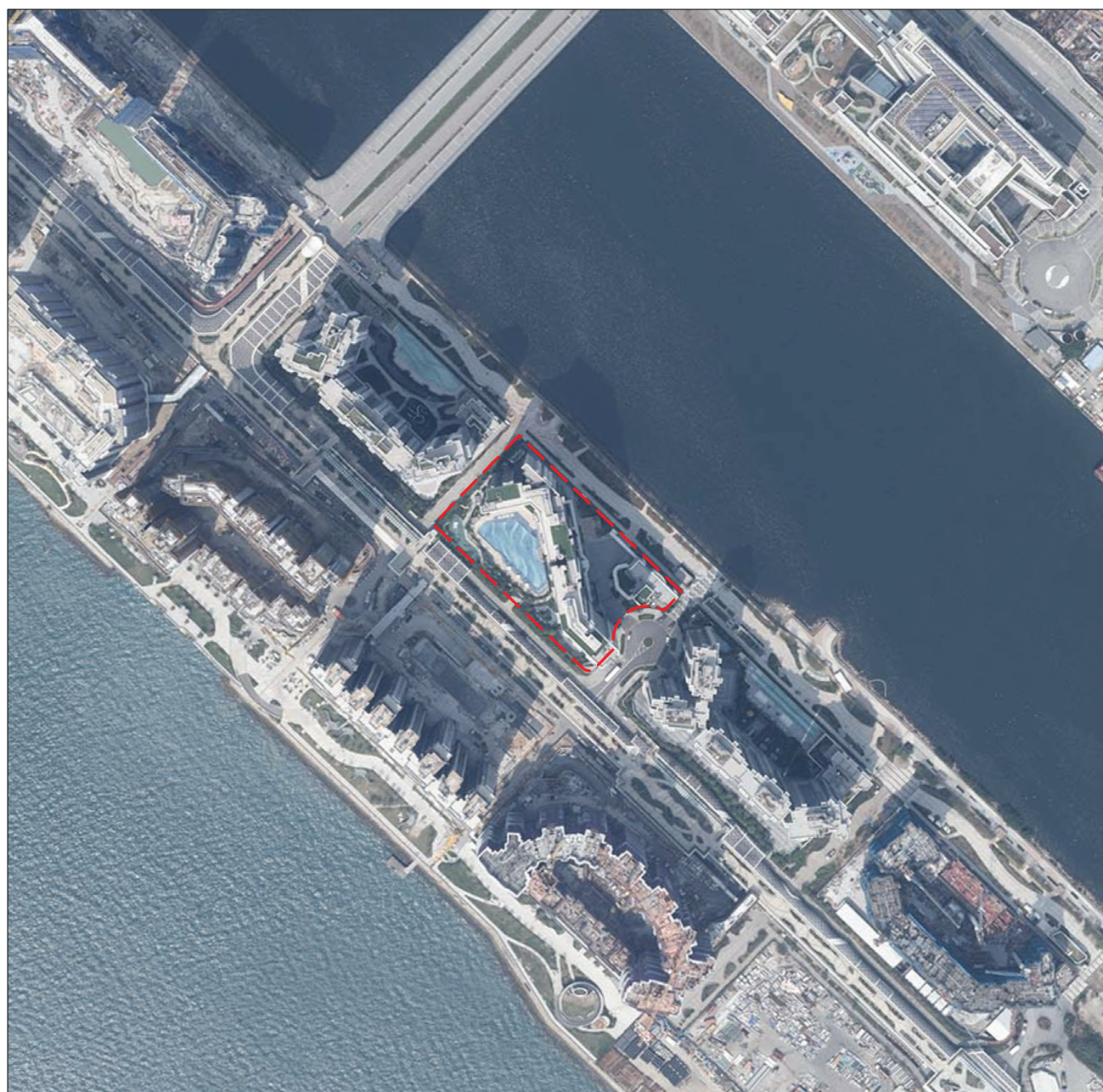


# 08 | AERIAL PHOTOGRAPH OF THE DEVELOPMENT 發展項目的鳥瞰照片



 Development Site Boundary  
發展項目邊界

0 25 50 100 150 200 250M米  
Scale 比例

Adopted from part of the aerial photograph taken by the Survey and Mapping Office of Lands Department at a flying height of 6,000 feet, photo no. E218861C dated 8 March 2024.  
摘錄自地政總署測繪處於2024年3月8日在6,000呎飛行高度拍攝之鳥瞰照片，相片編號為E218861C。

Survey and Mapping Office, Lands Department, The Government of HKSAR © Copyright reserved - reproduction by permission only.  
香港特別行政區政府地政總署測繪處©版權所有，未經許可，不得複製。

Note 備註:

Due to technical reasons (such as the shape of the Development), the aerial photograph has shown area more than that required under the Residential Properties (First-hand Sales) Ordinance (Cap. 621).  
因技術原因 (例如發展項目之形狀)，鳥瞰照片所顯示之範圍多於《一手住宅物業銷售條例》(第621章)所要求的範圍。