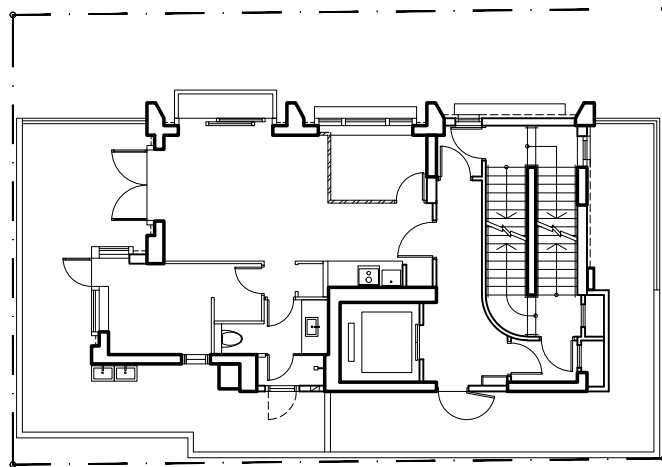


## ELEVATION PLAN

## 立面圖

WEST ELEVATION  
西面立面圖KEY PLAN  
索引圖WEST ELEVATION  
西面立面圖TUNG STREET  
東街BACK LANE  
後巷

The Authorized Person for the Development has certified that the elevations shown on this plan:

- (a) are prepared on the basis of the approved building plans for the Development as of 16 January 2023 and 31 March 2023; and
- (b) are in general accordance with the outward appearance of the Development.

發展項目的認可人士已證明本圖所顯示的立面：

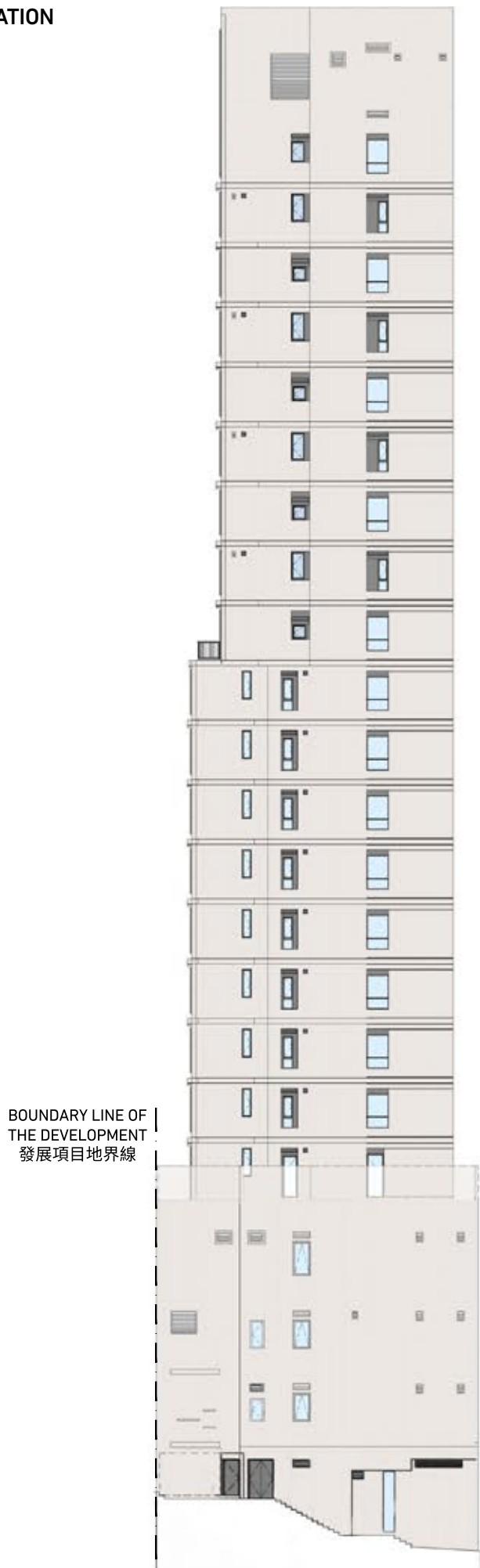
- (a) 以2023年1月16日及2023年3月31日的情況為準的發展項目經批准的建築圖則為基礎擬備；及
- (b) 大致上與發展項目的外觀一致。

## ELEVATION PLAN

## 立面圖

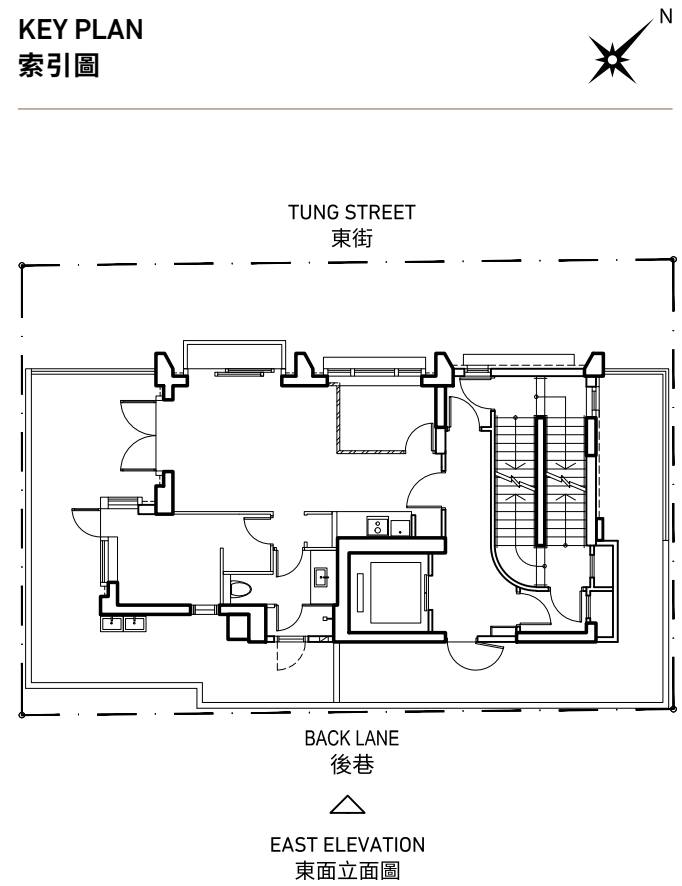
## EAST ELEVATION

## 東面立面圖



## KEY PLAN

## 索引圖



The Authorized Person for the Development has certified that the elevations shown on this plan:

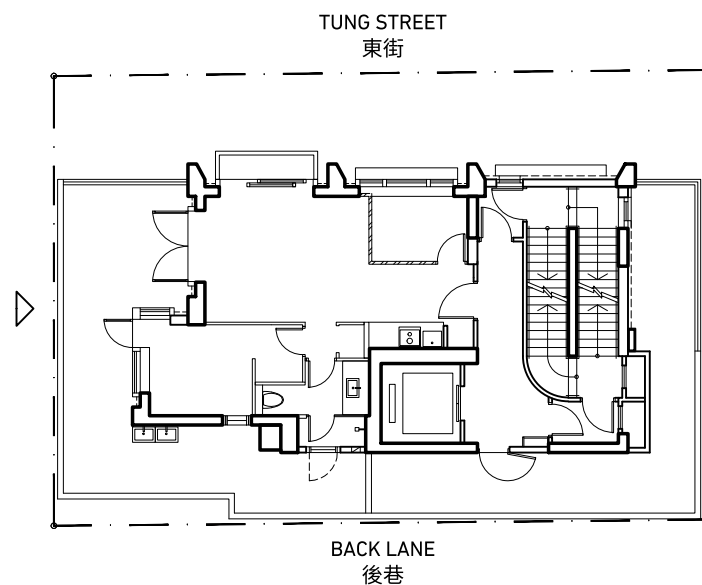
- (a) are prepared on the basis of the approved building plans for the Development as of 16 January 2023 and 31 March 2023; and
- (b) are in general accordance with the outward appearance of the Development.

發展項目的認可人士已證明本圖所顯示的立面：

- (a) 以2023年1月16日及2023年3月31日的情況為準的發展項目經批准的建築圖則為基礎擬備；及
- (b) 大致上與發展項目的外觀一致。

## ELEVATION PLAN

## 立面圖

SOUTH ELEVATION  
南面立面圖KEY PLAN  
索引圖SOUTH ELEVATION  
南面立面圖

## Note:

■ This represents the party wall with the adjacent building on the adjoining lot.

## 備註:

■ 這表示與毗鄰地段的相鄰建築物的共用牆。

The Authorized Person for the Development has certified that the elevations shown on this plan:

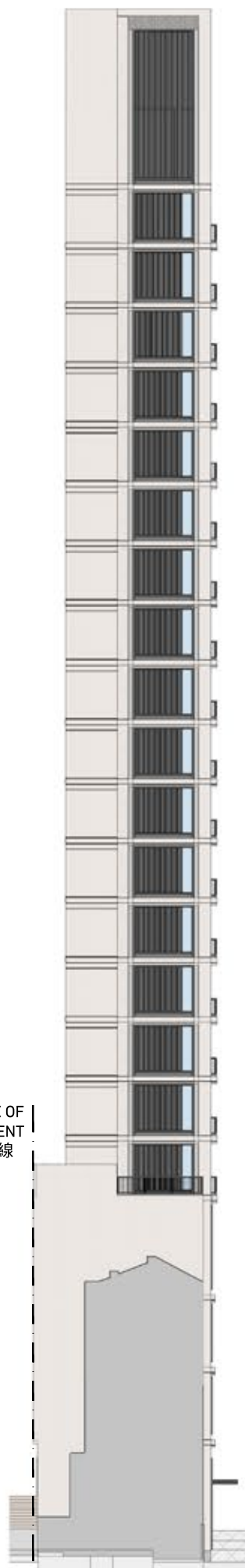
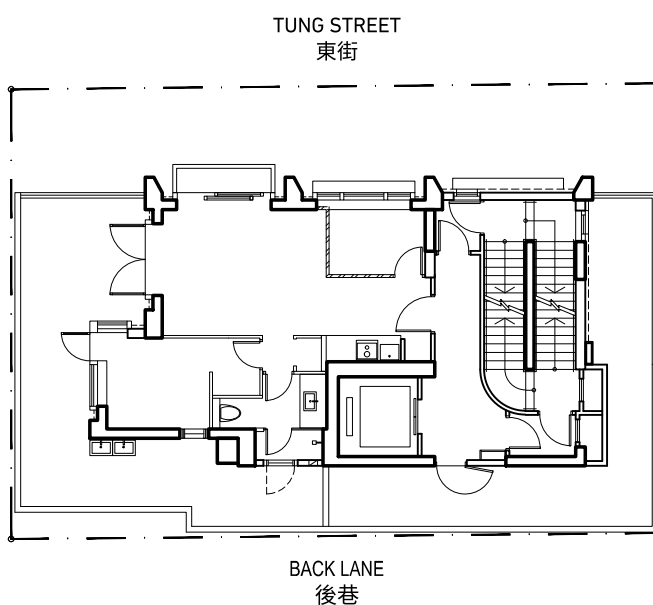
- (a) are prepared on the basis of the approved building plans for the Development as of 16 January 2023 and 31 March 2023; and
- (b) are in general accordance with the outward appearance of the Development.

發展項目的認可人士已證明本圖所顯示的立面：

- (a) 以2023年1月16日及2023年3月31日的情況為準的發展項目經批准的建築圖則為基礎擬備；及
- (b) 大致上與發展項目的外觀一致。

## ELEVATION PLAN

## 立面圖

NORTH ELEVATION  
北面立面圖BOUNDARY LINE OF  
THE DEVELOPMENT  
發展項目地界線BOUNDARY LINE OF  
THE DEVELOPMENT  
發展項目地界線KEY PLAN  
索引圖NORTH ELEVATION  
北面立面圖

## Note:

This represents the party wall with the adjacent building on the adjoining lot.

## 備註:

這表示與毗鄰地段的相鄰建築物的共用牆。

The Authorized Person for the Development has certified that the elevations shown on this plan:

- (a) are prepared on the basis of the approved building plans for the Development as of 16 January 2023 and 31 March 2023; and
- (b) are in general accordance with the outward appearance of the Development.

發展項目的認可人士已證明本圖所顯示的立面：

- (a) 以2023年1月16日及2023年3月31日的情況為準的發展項目經批准的建築圖則為基礎擬備；及
- (b) 大致上與發展項目的外觀一致。