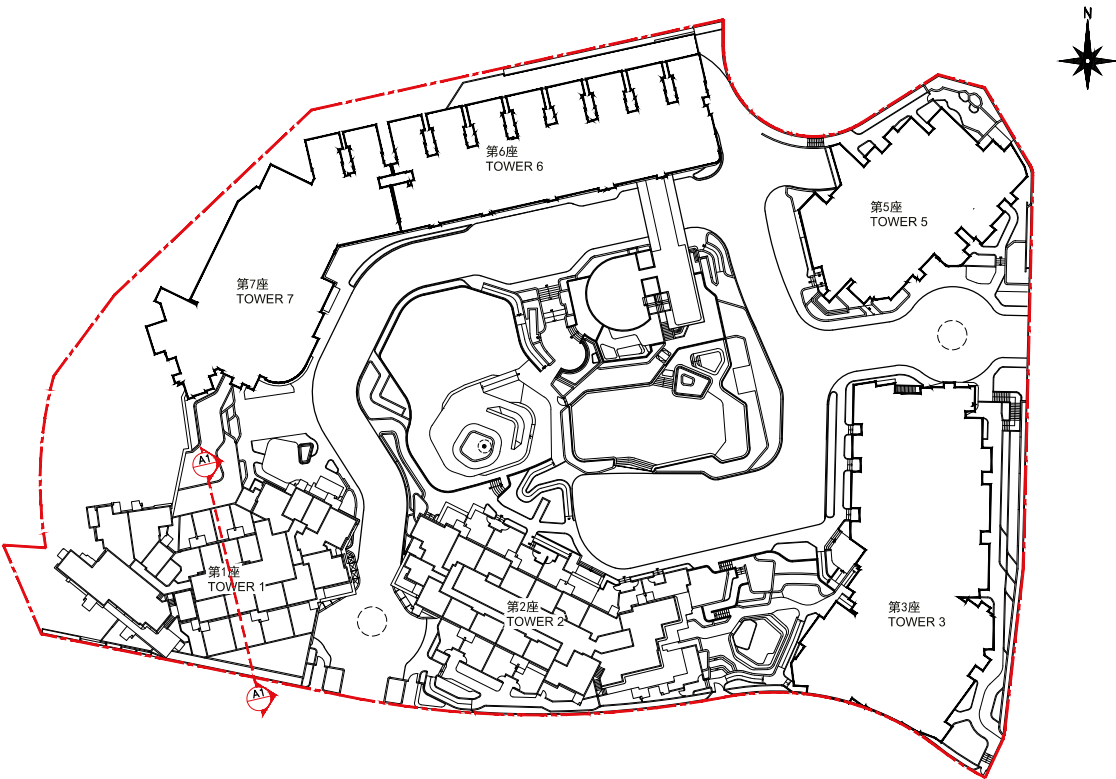


18. 期數中的建築物的橫截面圖

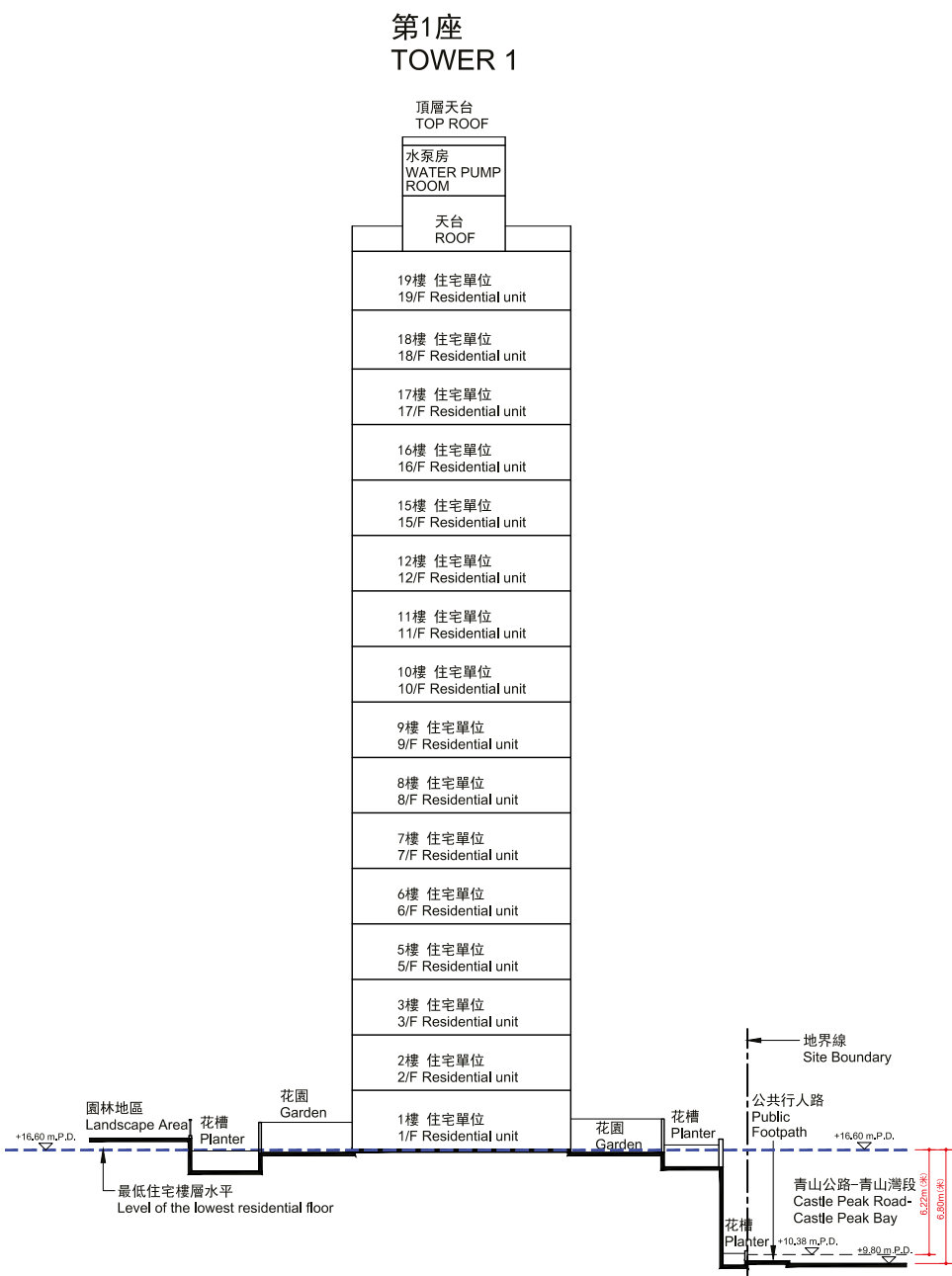
CROSS-SECTION PLAN OF BUILDING IN THE PHASE

橫截面圖 A1-A1
CROSS-SECTION PLAN A1-A1



- 圖例 Legend:
- 發展項目邊界線
Development site boundary
 - 香港主水平基準以上高度 (米)
Height in metres above the Hong Kong Principal Datum (HKPD).
 - 虛線為該建築物最低住宅層水平
Dotted line denotes the level of the lowest residential floor of the building.

1. 毗連建築物的一段青山公路 — 青山灣段，為香港主水平基準以上9.80米至10.38米。

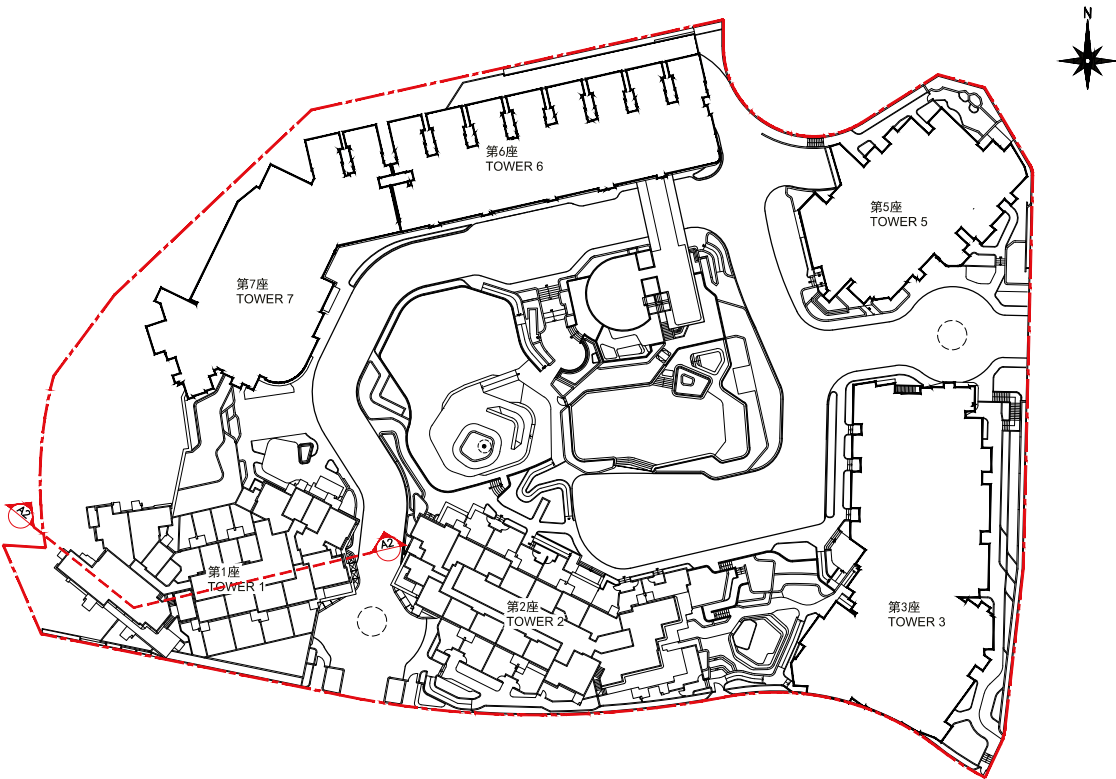


1. The part of Castle Peak Road - Castle Peak Bay adjacent to the building is 9.80 metres to 10.38 metres above the Hong Kong Principal Datum (m.P.D.).

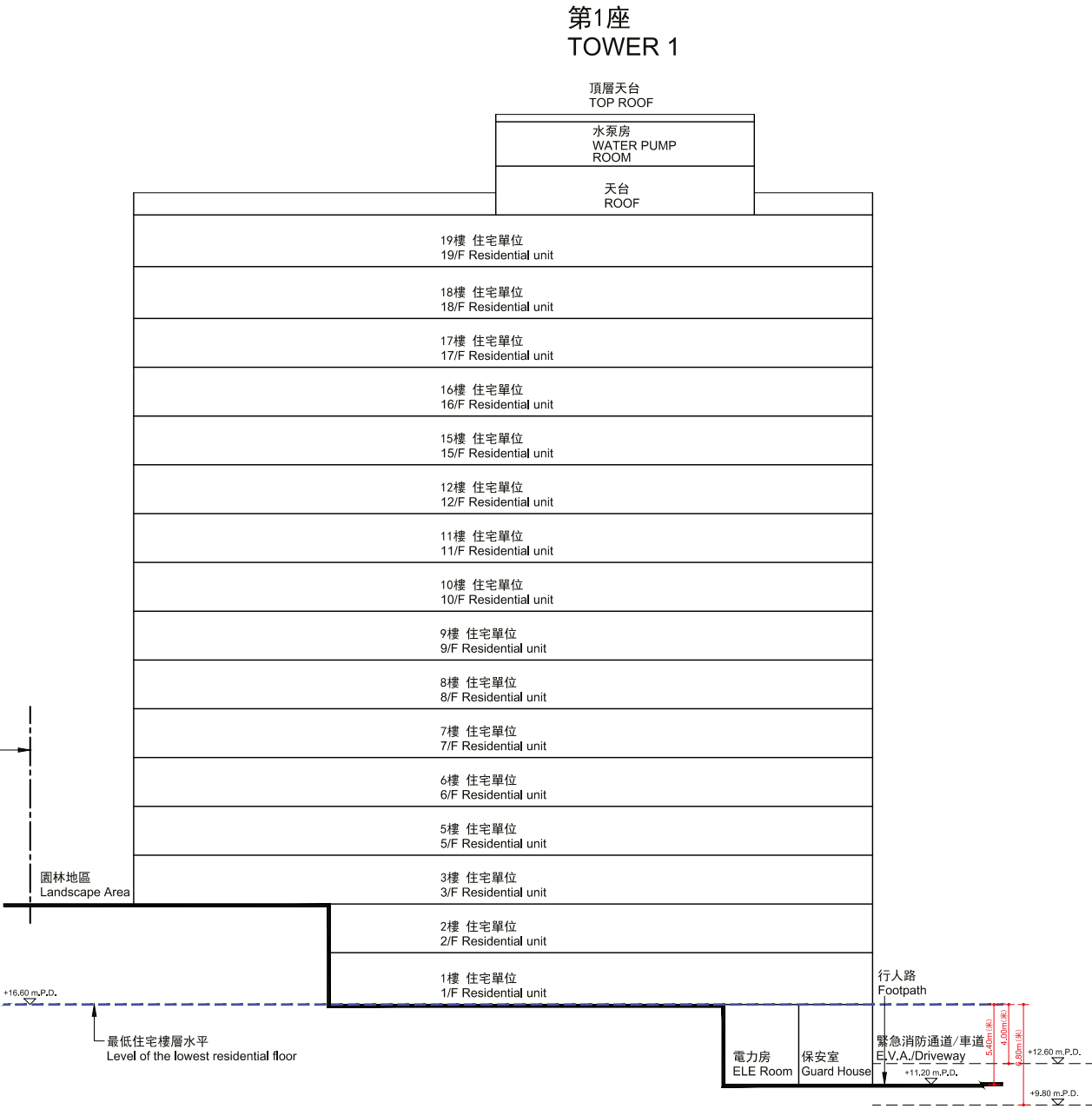
18. 期數中的建築物的橫截面圖

CROSS-SECTION PLAN OF BUILDING IN THE PHASE

橫截面圖 A2-A2
CROSS-SECTION PLAN A2-A2



- 圖例 Legend:
- 發展項目邊界線
Development site boundary
 - 香港主水平基準以上高度 (米)
Height in metres above the Hong Kong Principal Datum (HKPD).
 - 虛線為該建築物最低住宅層水平
Dotted line denotes the level of the lowest residential floor of the building.



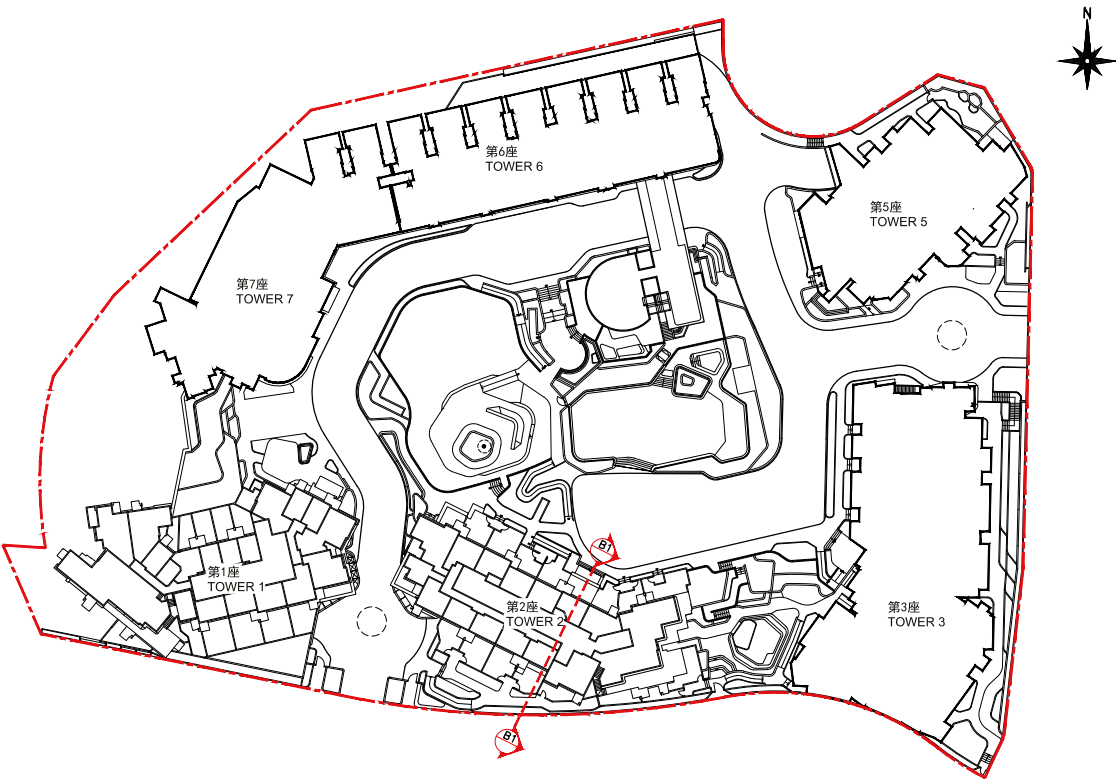
1. 毗連建築物的一段緊急消防通道/車道，為香港主水平基準以上9.80米至12.60米。

1. The part of Emergency Vehicular Access (E.V.A.) adjacent to the building is 9.80 metres to 12.60 metres above the Hong Kong Principal Datum (m.P.D.).

18. 期數中的建築物的橫截面圖

CROSS-SECTION PLAN OF BUILDING IN THE PHASE

橫截面圖 B1-B1
CROSS-SECTION PLAN B1-B1

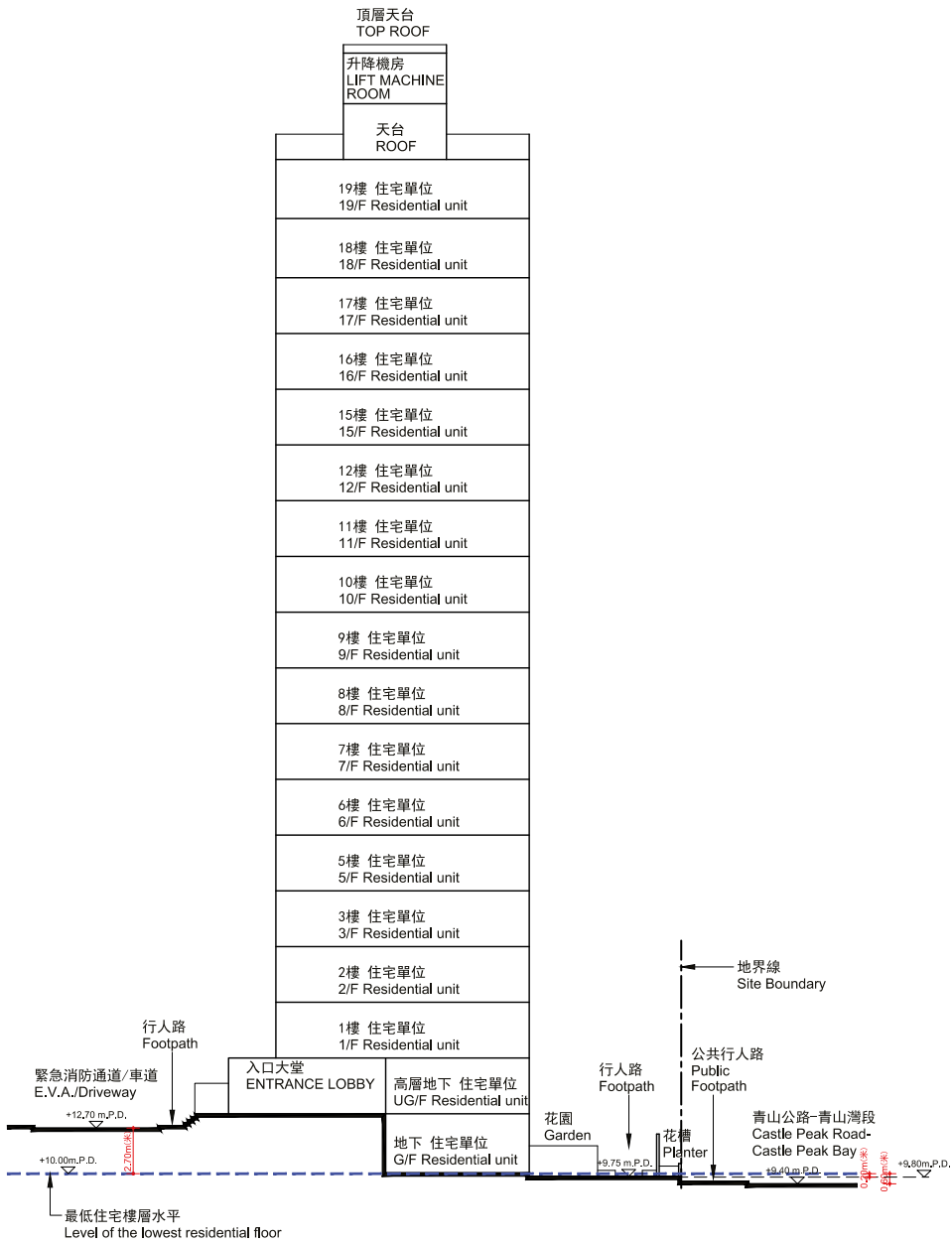


圖例 Legend:

- 發展項目邊界線
Development site boundary
- 香港主水平基準以上高度 (米)
Height in metres above the Hong Kong Principal Datum (HKPD).
- 虛線為該建築物最低住宅層水平
Dotted line denotes the level of the lowest residential floor of the building.

- 毗連建築物的一段青山公路 — 青山灣段，為香港主水平基準以上9.40米至9.80米。
- 毗連建築物的一段緊急消防通道/車道，為香港主水平基準以上12.70米。

第2座
TOWER 2

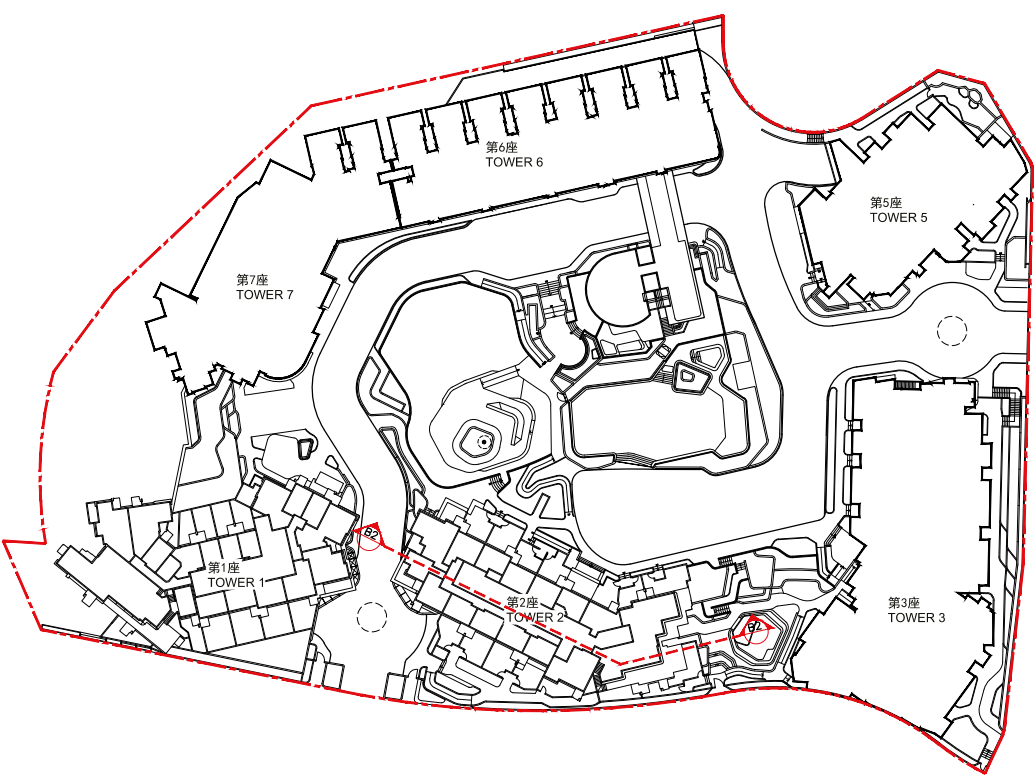


- The part of Castle Peak Road - Castle Peak Bay adjacent to the building is 9.40 metres to 9.80 metres above the Hong Kong Principal Datum (m.P.D.).
- The part of Emergency Vehicular Access (E.V.A.) adjacent to the building is 12.70 metres above the Hong Kong Principal Datum (m.P.D.).

18. 期數中的建築物的橫截面圖

CROSS-SECTION PLAN OF BUILDING IN THE PHASE

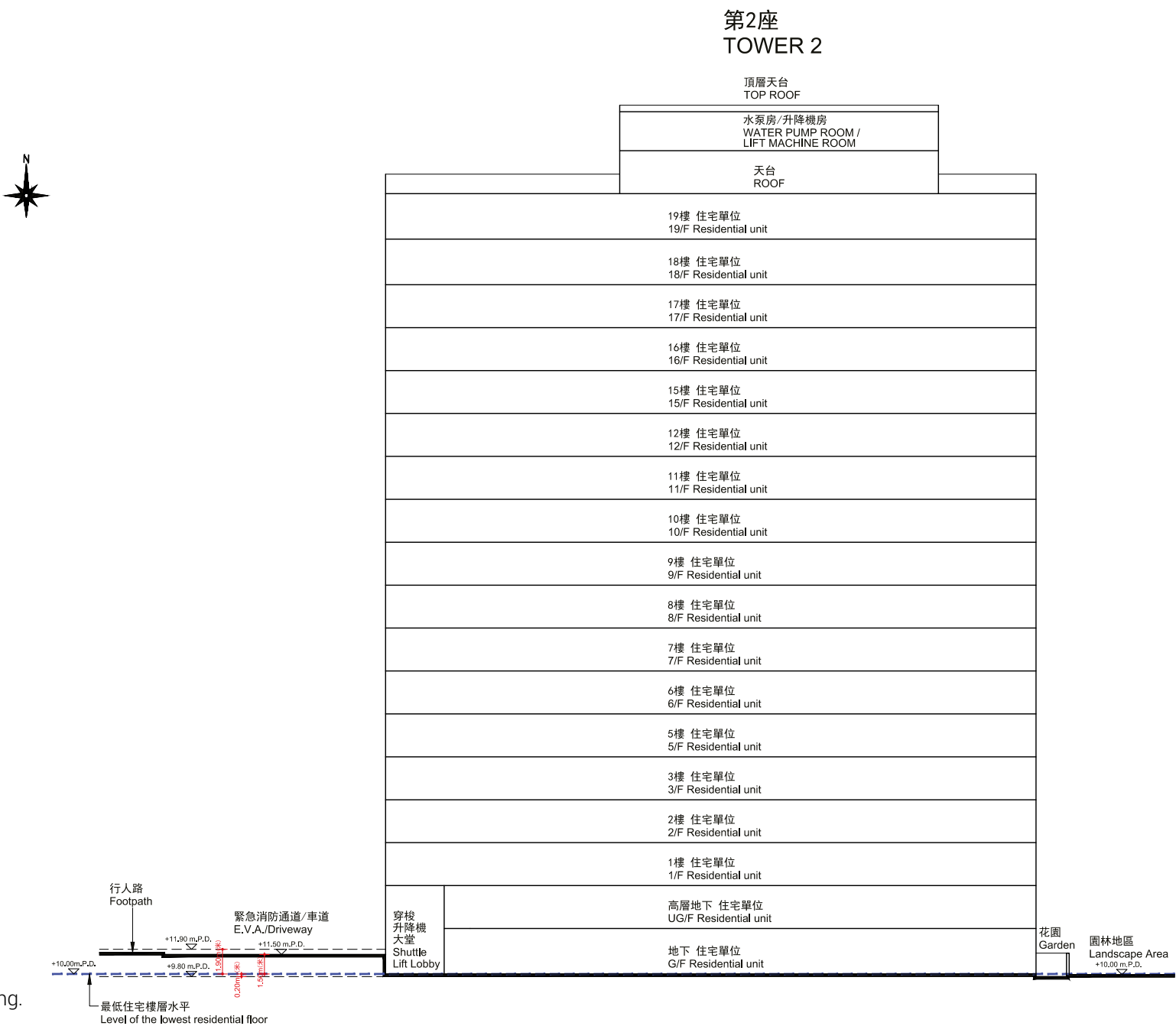
橫截面圖 B2-B2
CROSS-SECTION PLAN B2-B2



圖例 Legend:

- 發展項目邊界線
Development site boundary
- 香港主水平基準以上高度 (米)
Height in metres above the Hong Kong Principal Datum (HKPD).
- 虛線為該建築物最低住宅層水平
Dotted line denotes the level of the lowest residential floor of the building.

1. 毗連建築物的一段緊急消防通道/車道，為香港主水平基準以上9.80米至11.90米。



1. The part of Emergency Vehicular Access (E.V.A.) adjacent to the building is 9.80 metres to 11.90 metres above the Hong Kong Principal Datum (m.P.D.).