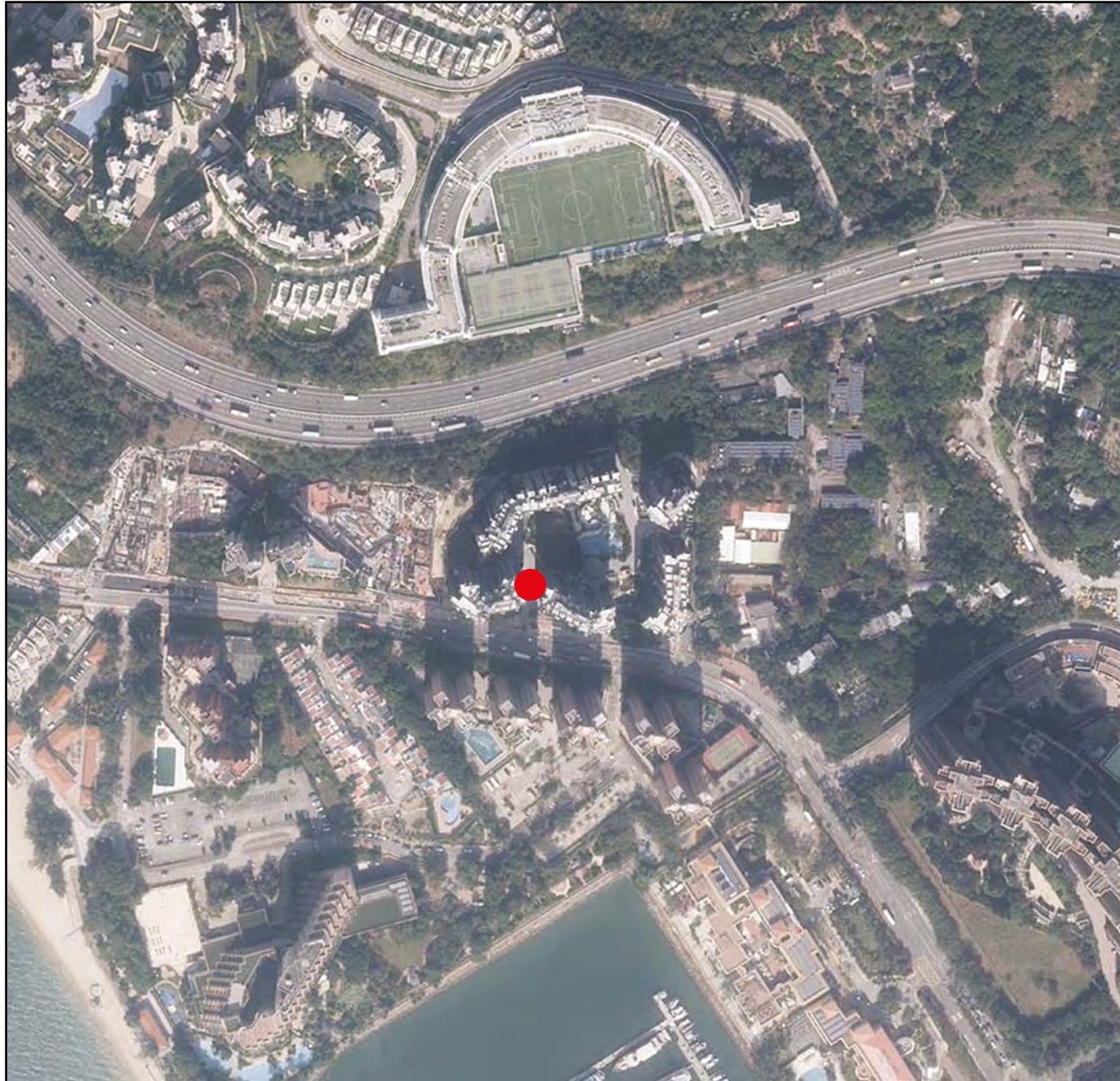


## 7. 期數的鳥瞰照片 AERIAL PHOTOGRAPH OF THE PHASE



香港特別行政區政府地政總署測繪處 © 版權所有，未經許可，不得複製。

Survey and Mapping Office, Lands Department, The Government of HKSAR © Copyright reserved – reproduction by permission only.

摘錄自地政總署測繪處於2023年11月28日在掃管笏6,900呎飛行高度拍攝之鳥瞰照片，編號為E213317C。

Adopted from part of the aerial photograph taken by the Survey and Mapping Office of the Lands Department at a flying height of 6,900 feet in So Kwun Wat, Photo No. E213317C, dated 28th November 2023.

備註：因技術性問題，此鳥瞰照片所顯示的範圍超過《一手住宅物業銷售條例》的規定。

Note: Due to technical reasons, this aerial photograph has shown more than the area required under the Residential Properties (First-hand Sales) Ordinance.

● 期數的位置  
Location of the Phase