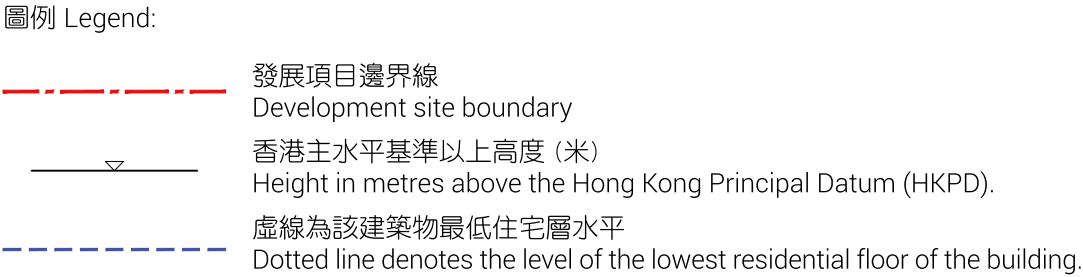
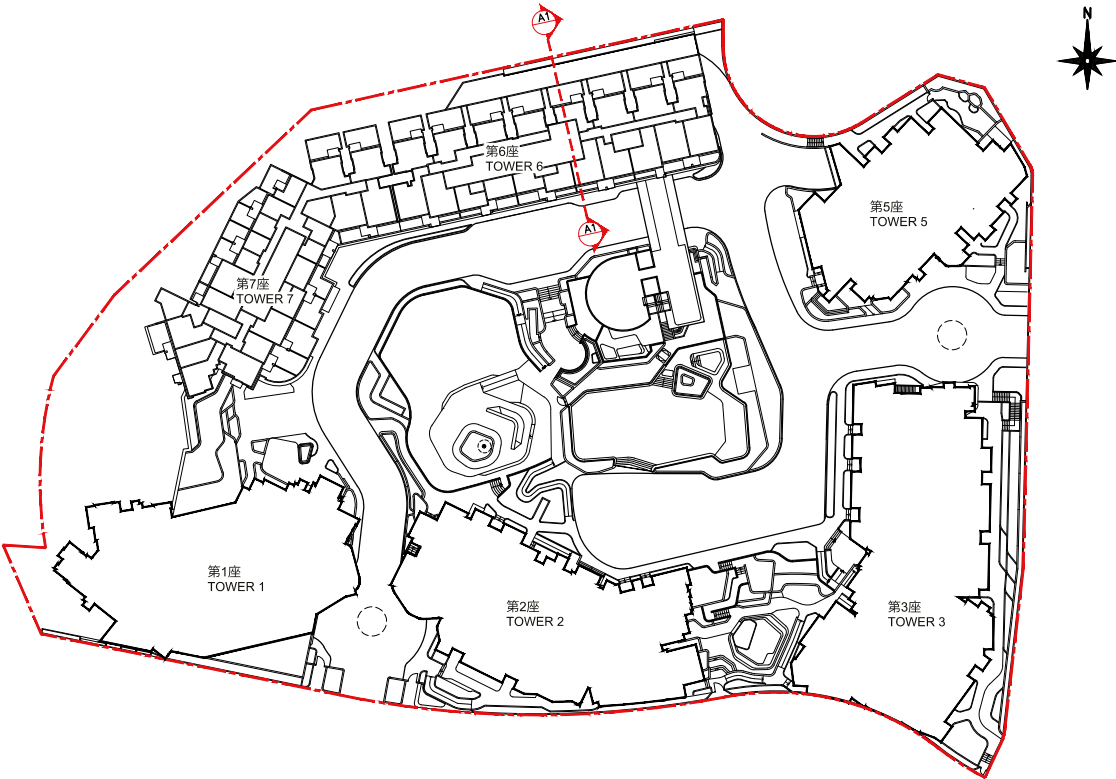


# 18. 期數中的建築物的橫截面圖

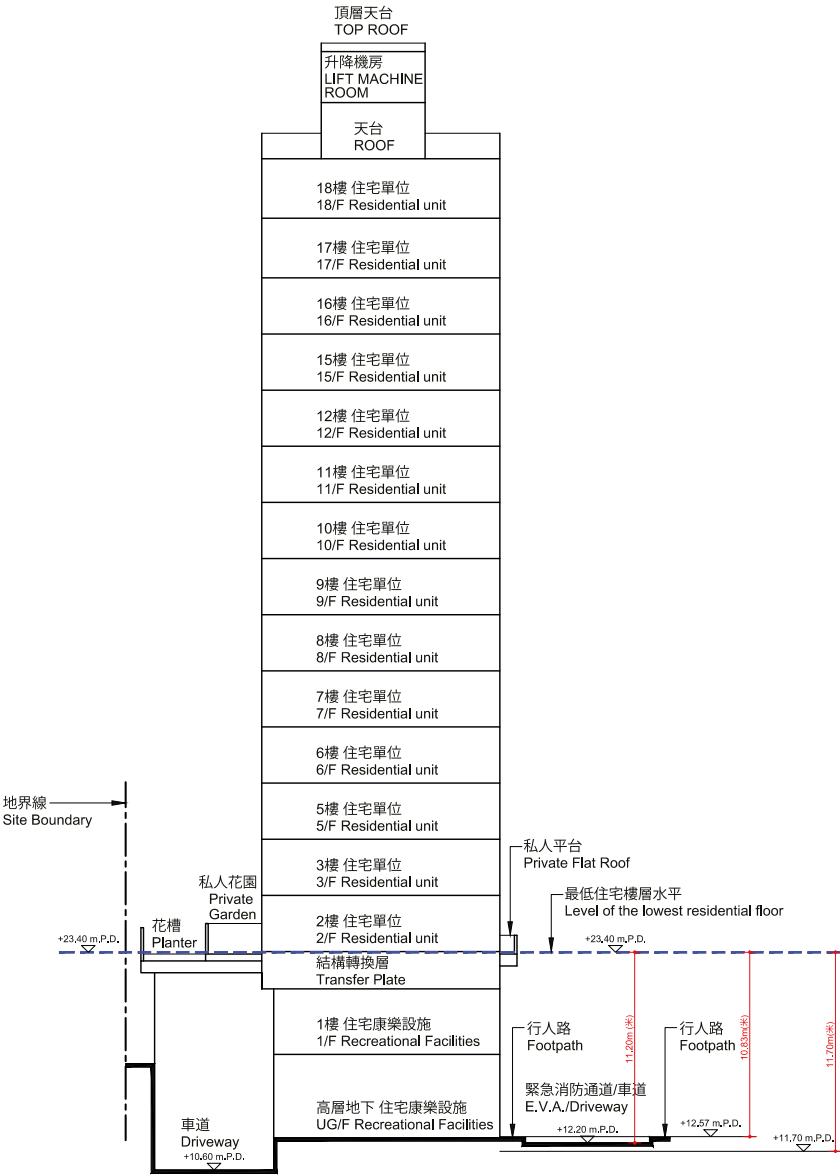
## CROSS-SECTION PLAN OF BUILDING IN THE PHASE

橫截面圖 A1-A1  
CROSS-SECTION PLAN A1-A1



1. 毗連建築物的一段緊急消防通道/車道，為香港主水平基準以上11.70米至12.57米。

第6座  
TOWER 6

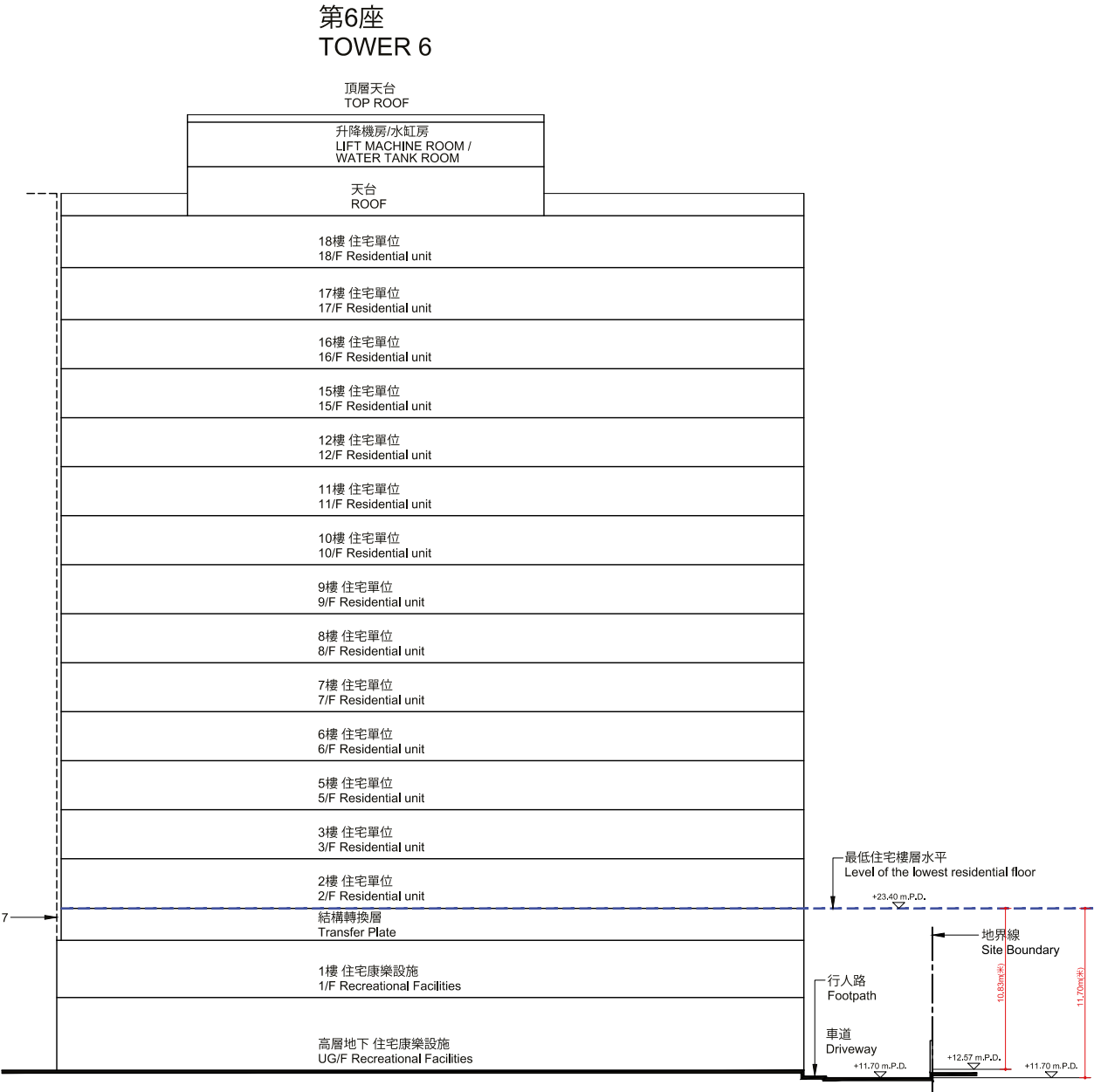
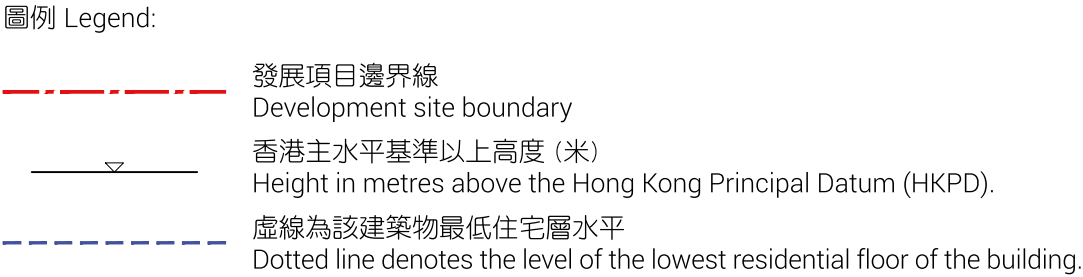
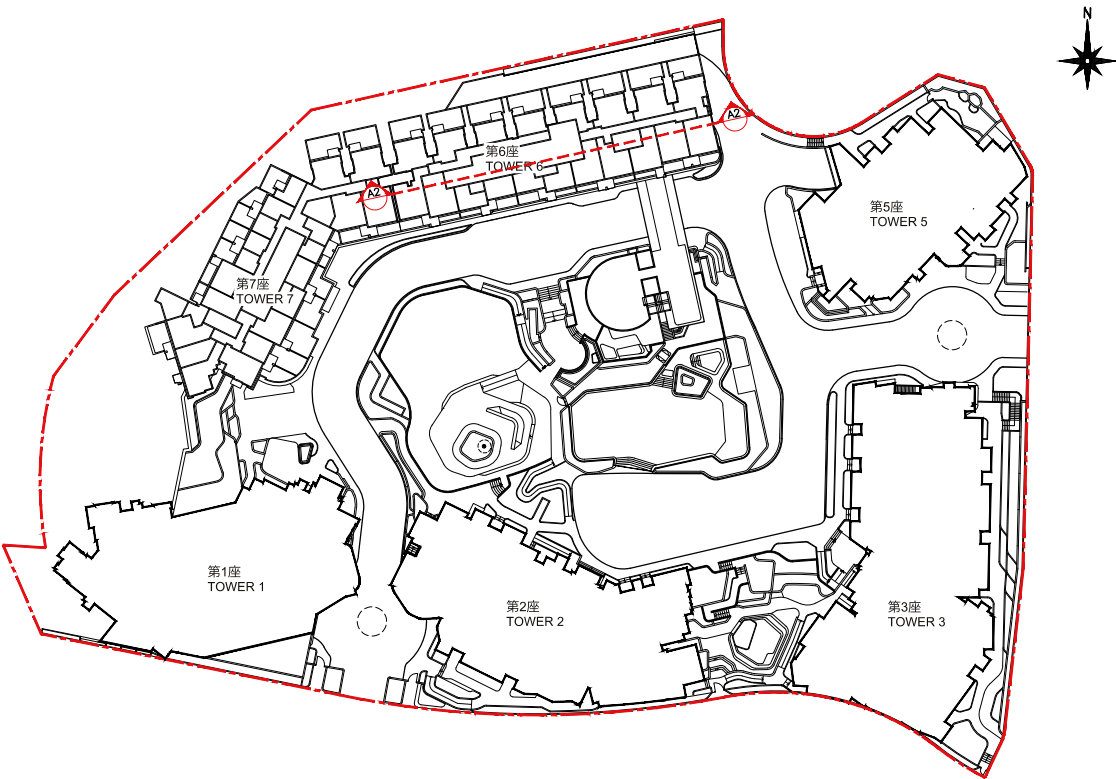


1. The part of Emergency Vehicular Access (E.V.A.) / Driveway adjacent to the building is 11.70 metres to 12.57 metres above the Hong Kong Principal Datum (m.P.D.).

# 18. 期數中的建築物的橫截面圖

## CROSS-SECTION PLAN OF BUILDING IN THE PHASE

橫截面圖 A2-A2  
CROSS-SECTION PLAN A2-A2



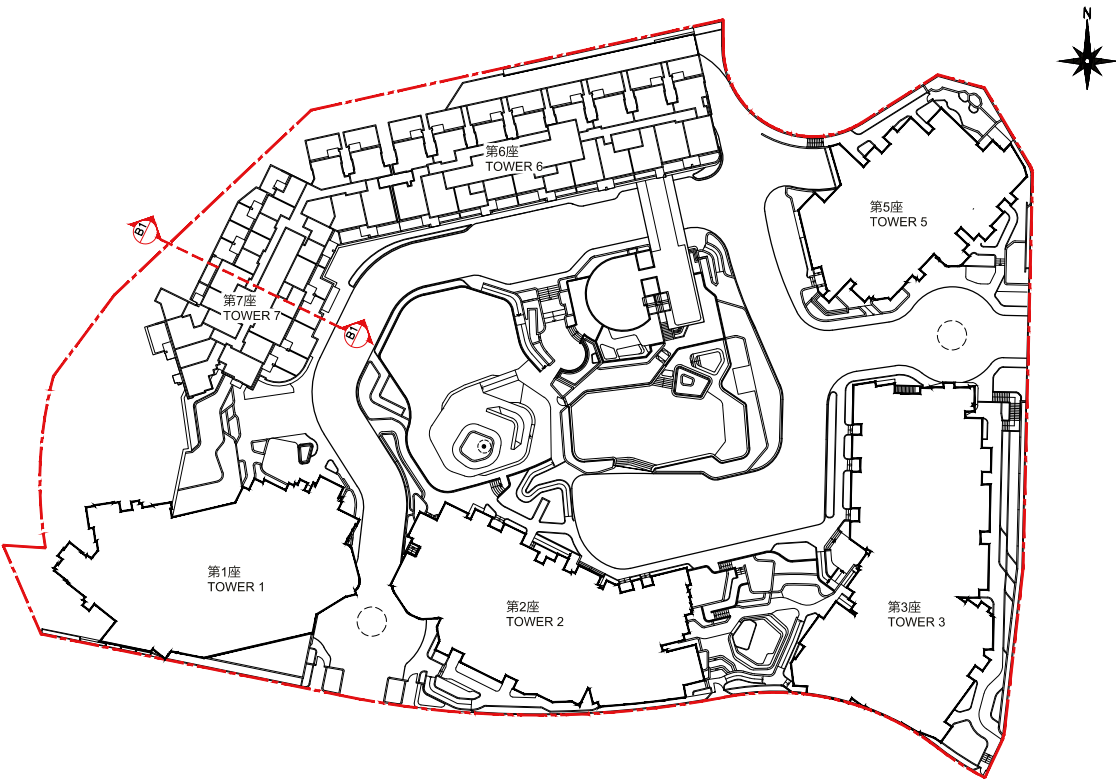
1. 毗連建築物的一段緊急消防通道/車道，為香港主水平基準以上11.70米至12.57米。

1. The part of Emergency Vehicular Access (E.V.A.) / Driveway adjacent to the building is 11.70 metres to 12.57 metres above the Hong Kong Principal Datum (m.P.D.).

# 18. 期數中的建築物的橫截面圖

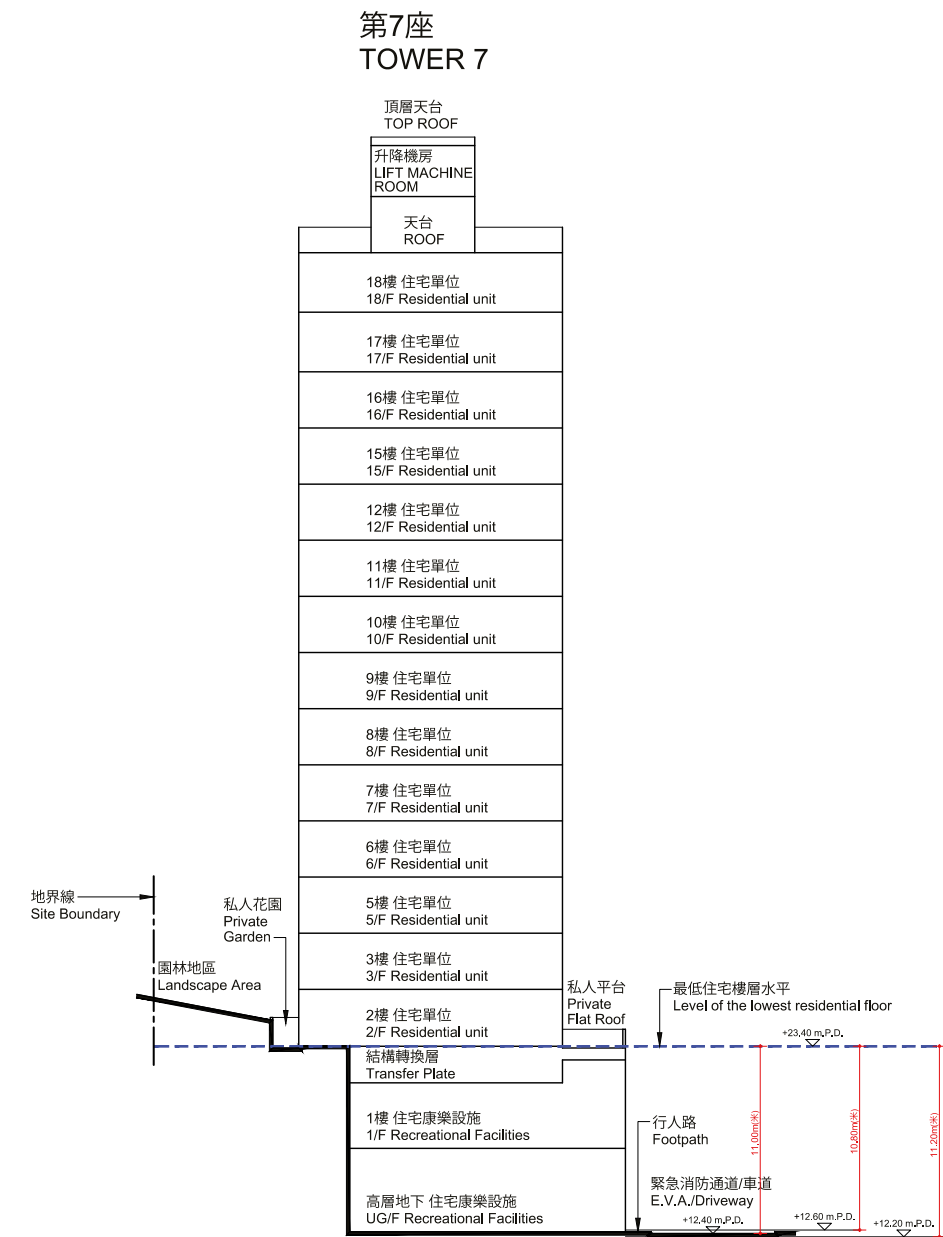
## CROSS-SECTION PLAN OF BUILDING IN THE PHASE

橫截面圖 B1-B1  
CROSS-SECTION PLAN B1-B1



- 圖例 Legend:
- 發展項目邊界線  
Development site boundary
  - 香港主水平基準以上高度 (米)  
Height in metres above the Hong Kong Principal Datum (HKPD).
  - 虛線為該建築物最低住宅層水平  
Dotted line denotes the level of the lowest residential floor of the building.

1. 毗連建築物的一段緊急消防通道/車道，為香港主水平基準以上12.20米至12.60米。



1. The part of Emergency Vehicular Access (E.V.A.) / Driveway adjacent to the building is 12.20 metres to 12.60 metres above the Hong Kong Principal Datum (m.P.D.).