

# FLOOR PLANS OF RESIDENTIAL PROPERTIES IN THE PHASE

## 期數的住宅物業的樓面平面圖

### LEGEND OF THE TERMS AND ABBREVIATIONS USED ON THE FLOOR PLANS

#### 樓面平面圖中所使用之名詞及簡稱之圖例

A. BAL.	= ACOUSTIC BALCONY	= 減音露台
A. BAL. FOR 7/F-12/F ONLY	= ACOUSTIC BALCONY FOR 7/F-12/F ONLY	= 僅於7樓至12樓之減音露台
A/C PLATFORM	= AIR-CONDITIONER PLATFORM	= 冷氣機平台
A/C PLATFORM W/. ALUM. GRILLE	= AIR-CONDITIONER PLATFORM WITH ALUMINIUM GRILLE	= 冷氣機平台與鋁質欄柵
A/C PLATFORM W/. FULL HEIGHT ALUM. GRILLE	= AIR-CONDITIONER PLATFORM WITH FULL HEIGHT ALUMINIUM GRILLE	= 冷氣機平台與全高度鋁質欄柵
A.D.	= AIR DUCT	= 通風槽
ALUM. A/C GRILLE	= ALUMINIUM GRILLE FOR AIR-CONDITIONER	= 冷氣機之鋁質欄柵
ALUM. ARCH. FEATURE AT 7/F ONLY	= ALUMINIUM ARCHITECTURAL FEATURE AT 7/F ONLY	= 僅於7樓之鋁質建築裝飾
ALUM. ARCH. FEATURE AT 10/F, 15/F, 18/F, 21/F & 25/F ONLY	= ALUMINIUM ARCHITECTURAL FEATURE AT 10/F, 15/F, 18/F, 21/F & 25/F ONLY	= 僅於10樓、15樓、18樓、21樓及25樓之鋁質建築裝飾
ALUM. ARCH. FEATURE AT 11/F, 16/F, 19/F & 22/F ONLY	= ALUMINIUM ARCHITECTURAL FEATURE AT 11/F, 16/F, 19/F & 22/F ONLY	= 僅於11樓、16樓、19樓及22樓之鋁質建築裝飾
ALUM. ARCH. FEATURE AT L/L	= ALUMINIUM ARCHITECTURAL FEATURE AT LOW LEVEL	= 位於低位的鋁質建築裝飾
ALUM. ARCH. FEATURE	= ALUMINIUM ARCHITECTURAL FEATURE	= 鋁質建築裝飾
ALUM. ARCH. FEATURE ABOVE	= ALUMINIUM ARCHITECTURAL FEATURE ABOVE	= 鋁質建築裝飾置上
ALUM. CLADDING	= ALUMINIUM CLADDING	= 鋁質覆蓋層
ARCH. FEATURE	= ARCHITECTURAL FEATURE	= 建築裝飾
AUTO CLOSE DOOR NOT FOR VENTILATION PURPOSE	= AUTO CLOSE DOOR NOT FOR VENTILATION PURPOSE	= 不作通風用途的自動關閉式門
AUTO CLOSE DOOR NOT FOR VENTILATION PURPOSE (7/F TO 10/F ONLY)	= AUTO CLOSE DOOR NOT FOR VENTILATION PURPOSE (7/F TO 10/F ONLY)	= 僅於7樓至10樓之不作通風用途的自動關閉式門
A.W. FOR 7/F-10/F ONLY	= ACOUSTIC WINDOW (BAFFLE TYPE) FOR 7/F-10/F ONLY	= 僅於7樓至10樓之減音窗（擋音式）
A.W. FOR 7/F-11/F ONLY	= ACOUSTIC WINDOW (BAFFLE TYPE) FOR 7/F-11/F ONLY	= 僅於7樓至11樓之減音窗（擋音式）
A.W. FOR 7/F-12/F ONLY	= ACOUSTIC WINDOW (BAFFLE TYPE) FOR 7/F-12/F ONLY	= 僅於7樓至12樓之減音窗（擋音式）
A.W. FOR 9/F-25/F ONLY	= ACOUSTIC WINDOW (BAFFLE TYPE) FOR 9/F-25/F ONLY	= 僅於9樓至25樓之減音窗（擋音式）
A.W. FOR 15/F-25/F ONLY	= ACOUSTIC WINDOW (BAFFLE TYPE) FOR 15/F-25/F ONLY	= 僅於15樓至25樓之減音窗（擋音式）
BA.	= BATHROOM	= 浴室

Notes :

1. There may be architectural features on external walls of some floors.
2. Common pipes or ducts exposed and/or enclosed in aluminium cladding are located at/adjacent to balcony and/or flat roof and/or garden and/or roof and/or utility platform and/or air-conditioner platform and/or external wall of some residential units.
3. There are sunken slabs and/or ceiling bulkheads and/or false ceiling at living rooms, dining rooms, bedrooms, study rooms, utility rooms, corridors, bathrooms, store rooms, lavatories and kitchens of some residential units for the air-conditioning system and/or electrical & mechanical services. There are exposed pipes or ductings for air-conditioning system and/or electrical and mechanical services within some utility rooms.
4. The internal ceiling height within some units may vary due to structural, architectural and/or decoration design variations.
5. Balconies and utility platforms are non-enclosed areas.
6. Symbols of fittings and fitments shown on the floor plans, such as bathtubs, sink, water closets, shower, sink counter etc, are architectural symbols extracted from the latest approved general building plans for general indication only.
7. There are non-structural prefabricated external walls and curtain walls in the residential units. The Saleable Area as defined in the Formal Agreement for Sale and Purchase of a residential unit has included the non-structural prefabricated external walls and curtain walls, and is measured from the exterior of such non-structural prefabricated external walls and curtain walls.

備註：

1. 部份樓層外牆設有建築裝飾。
2. 部份住宅單位的露台及/或平台及/或花園及/或天台及/或工作平台及/或冷氣機平台及/或外牆設有外露及/或鋁質覆蓋層內藏之公用喉管或管道。
3. 部份住宅單位的客廳、飯廳、睡房、書房、工作間、走廊、浴室、儲物房、洗手間以及廚房有跌級樓板及/或假陣及/或假天花用以裝置冷氣系統及/或機電設備。部份工作間內設有冷氣系統及/或機電設備之外露喉管或管道。
4. 部份單位之室內天花高度將會因應結構、建築及/或裝修設計上的需要而有差異。
5. 露台及工作平台為不可封閉的地方。
6. 樓面平面圖上所顯示的形象裝置符號，例如浴缸、洗滌盆、坐廁、花灑、洗滌盆櫃等乃摘自最新的經批准的建築圖則，只作一般性標誌。
7. 住宅單位有非結構的預製外牆及幕牆。住宅單位之正式買賣合約內所定義之實用面積已包括非結構的預製外牆及幕牆，並由該非結構的預製外牆及幕牆之外圍起計。

# FLOOR PLANS OF RESIDENTIAL PROPERTIES IN THE PHASE

## 期數的住宅物業的樓面平面圖

### LEGEND OF THE TERMS AND ABBREVIATIONS USED ON THE FLOOR PLANS

#### 樓面平面圖中所使用之名詞及簡稱之圖例

BA.2	= BATHROOM 2	= 浴室2
BA.3	= BATHROOM 3	= 浴室3
BAL.	= BALCONY	= 露台
BAL. ABOVE	= BALCONY ABOVE	= 露台置上
BR.2	= BEDROOM 2	= 睡房2
BR.3	= BEDROOM 3	= 睡房3
BR.4	= BEDROOM 4	= 睡房4
BUILDING LINE ABOVE	= BUILDING LINE ABOVE	= 建築物界線置上
CANOPY BELOW	= CANOPY BELOW	= 下層簷篷
CAT LADDER	= CAT LADDER	= 爬梯
C.A.U.D.	= COMMON AREA UNDER DEED OF MUTUAL COVENANT	= 公契下指定之公用範圍
C.D.	= CABLE DUCT	= 電線上引管道
CONC. PLINTH FOR A/C OUTDOOR UNIT	= REINFORCED CONCRETE PLINTH FOR AIR-CONDITIONER OUTDOOR UNIT	= 鋼筋混凝土基座供冷氣室外機
COVERED LANDSCAPE AREA (COMMON AREA)	= COVERED LANDSCAPE AREA (COMMON AREA)	= 有蓋園景範圍（公用範圍）
DN	= DOWN	= 落
ELE. ROOM	= ELECTRICAL ROOM	= 電力房
E.L.V.	= EXTRA-LOW VOLTAGE CABLE DUCT	= 特低壓電線上引管道
E.M.R.	= ELECTRICAL METER ROOM	= 電錶房
EXPANSION JOINT	= EXPANSION JOINT	= 伸縮縫
FAN ROOM	= FAN ROOM	= 風櫃房
FLAT ROOF	= FLAT ROOF	= 平台
FLAT ROOF (COMMON AREA)	= FLAT ROOF (COMMON AREA)	= 平台（公用範圍）
FIREMAN'S LIFT LOBBY	= FIREMAN'S LIFT LOBBY	= 消防員升降機大堂
F.W.	= FIXED GLAZING AND MAINTENANCE WINDOW	= 固定式窗戶及維修窗

#### Notes :

1. There may be architectural features on external walls of some floors.
2. Common pipes or ducts exposed and/or enclosed in aluminium cladding are located at/adjacent to balcony and/or flat roof and/or garden and/or roof and/or utility platform and/or air-conditioner platform and/or external wall of some residential units.
3. There are sunken slabs and/or ceiling bulkheads and/or false ceiling at living rooms, dining rooms, bedrooms, study rooms, utility rooms, corridors, bathrooms, store rooms, lavatories and kitchens of some residential units for the air-conditioning system and/or electrical & mechanical services. There are exposed pipes or ductings for air-conditioning system and/or electrical and mechanical services within some utility rooms.
4. The internal ceiling height within some units may vary due to structural, architectural and/or decoration design variations.
5. Balconies and utility platforms are non-enclosed areas.
6. Symbols of fittings and fitments shown on the floor plans, such as bathtubs, sink, water closets, shower, sink counter etc, are architectural symbols extracted from the latest approved general building plans for general indication only.
7. There are non-structural prefabricated external walls and curtain walls in the residential units. The Saleable Area as defined in the Formal Agreement for Sale and Purchase of a residential unit has included the non-structural prefabricated external walls and curtain walls, and is measured from the exterior of such non-structural prefabricated external walls and curtain walls.

#### 備註：

1. 部份樓層外牆設有建築裝飾。
2. 部份住宅單位的露台及/或平台及/或花園及/或天台及/或工作平台及/或冷氣機平台及/或外牆設有外露及/或鋁質覆蓋層內藏之公用喉管或管道。
3. 部份住宅單位的客廳、飯廳、睡房、書房、工作間、走廊、浴室、儲物房、洗手間以及廚房有跌級樓板及/或假陣及/或假天花用以裝置冷氣系統及/或機電設備。部份工作間內設有冷氣系統及/或機電設備之外露喉管或管道。
4. 部份單位之室內天花高度將會因應結構、建築及/或裝修設計上的需要而有差異。
5. 露台及工作平台為不可封閉的地方。
6. 樓面平面圖上所顯示的形象裝置符號，例如浴缸、洗滌盆、坐廁、花灑、洗滌盆櫃等乃摘自最新的經批准的建築圖則，只作一般性標誌。
7. 住宅單位有非結構的預製外牆及幕牆。住宅單位之正式買賣合約內所定義之實用面積已包括非結構的預製外牆及幕牆，並由該非結構的預製外牆及幕牆之外圍起計。



# FLOOR PLANS OF RESIDENTIAL PROPERTIES IN THE PHASE

## 期數的住宅物業的樓面平面圖

### LEGEND OF THE TERMS AND ABBREVIATIONS USED ON THE FLOOR PLANS

#### 樓面平面圖中所使用之名詞及簡稱之圖例

F.W. AT 7/F ONLY (OPENABLE AT 8/F-25/F)	= FIXED GLAZING AND MAINTENANCE WINDOW AT 7/F ONLY (OPENABLE AT 8/F-25/F)	= 僅於7樓之固定式窗戶及維修窗 (可開窗戶於8樓至25樓)
FLUSHING WATER TANK	= FLUSHING WATER TANK	= 沖廁水缸
HORIZONTAL SCREEN	= HORIZONTAL SCREEN	= 橫向屏障
H.R.	= HOSE REEL	= 消防喉轆
I.C.A.M.	= INACCESSIBLE COMMON AREA FOR MAINTENANCE ONLY	= 僅供維修時使用的不能進入之公用範圍
KIT.	= KITCHEN	= 廚房
LAV.	= LAVATORY	= 洗手間
LIFT	= LIFT	= 升降機
LIFT LOBBY	= LIFT LOBBY	= 升降機大堂
LIFT MACHINE ROOM	= LIFT MACHINE ROOM	= 升降機機房
LIFT SHAFT	= LIFT SHAFT	= 升降機槽
LIFT OPENING AT COVERED LANDSCAPE AREA	= LIFT OPENING AT COVERED LANDSCAPE AREA	= 升降機開往有蓋園景範圍
LIV. & DIN.	= LIVING ROOM & DINING ROOM	= 客廳及飯廳
M.BA.	= MASTER BATHROOM	= 主人浴室
M.BR.	= MASTER BEDROOM	= 主人睡房
P.A.	= PLANTER AREA	= 花槽
P.D.	= PIPE DUCT	= 管道槽
PERMEABLE ALUM. ARCH. FEATURE	= PERMEABLE ALUMINIUM ARCHITECTURAL FEATURE	= 透風鋁質建築裝飾
PERMEABLE ALUM. ARCH. FEATURE 1100H	= 1100mmH PERMEABLE ALUMINIUM ARCHITECTURAL FEATURE	= 1100毫米高透風鋁質建築裝飾
POTABLE WATER TANK	= POTABLE WATER TANK	= 飲用水水缸
PRESERVATION OF TREE (T18)	= PRESERVATION OF TREE (T18)	= 保育樹木 (T18)
PIPE CHAMBER	= PIPE CHAMBER	= 管道檢修井
PRIVATE GARDEN	= PRIVATE GARDEN	= 私人花園
PUMP ROOM FOR FLUSHING AND POTABLE WATER TANK	= PUMP ROOM FOR FLUSHING AND POTABLE WATER TANK	= 沖廁水及飲用水泵房
PUMP ROOM FOR POTABLE WATER	= PUMP ROOM FOR POTABLE WATER	= 飲用水泵房

Notes :

1. There may be architectural features on external walls of some floors.
2. Common pipes or ducts exposed and/or enclosed in aluminium cladding are located at/adjacent to balcony and/or flat roof and/or garden and/or roof and/or utility platform and/or air-conditioner platform and/or external wall of some residential units.
3. There are sunken slabs and/or ceiling bulkheads and/or false ceiling at living rooms, dining rooms, bedrooms, study rooms, utility rooms, corridors, bathrooms, store rooms, lavatories and kitchens of some residential units for the air-conditioning system and/or electrical & mechanical services. There are exposed pipes or ductings for air-conditioning system and/or electrical and mechanical services within some utility rooms.
4. The internal ceiling height within some units may vary due to structural, architectural and/or decoration design variations.
5. Balconies and utility platforms are non-enclosed areas.
6. Symbols of fittings and fitments shown on the floor plans, such as bathtubs, sink, water closets, shower, sink counter etc, are architectural symbols extracted from the latest approved general building plans for general indication only.
7. There are non-structural prefabricated external walls and curtain walls in the residential units. The Saleable Area as defined in the Formal Agreement for Sale and Purchase of a residential unit has included the non-structural prefabricated external walls and curtain walls, and is measured from the exterior of such non-structural prefabricated external walls and curtain walls.

備註：


1. 部份樓層外牆設有建築裝飾。
2. 部份住宅單位的露台及/或平台及/或花園及/或天台及/或工作平台及/或冷氣機平台及/或外牆設有外露及/或鋁質覆蓋層內藏之公用喉管或管道。
3. 部份住宅單位的客廳、飯廳、睡房、書房、工作間、走廊、浴室、儲物房、洗手間以及廚房有跌級樓板及/或假陣及/或假天花用以裝置冷氣系統及/或機電設備。部份工作間內設有冷氣系統及/或機電設備之外露喉管或管道。
4. 部份單位之室內天花高度將會因應結構、建築及/或裝修設計上的需要而有差異。
5. 露台及工作平台為不可封閉的地方。
6. 樓面平面圖上所顯示的形象裝置符號，例如浴缸、洗滌盆、坐廁、花灑、洗滌盆櫃等乃摘自最新的經批准的建築圖則，只作一般性標誌。
7. 住宅單位有非結構的預製外牆及幕牆。住宅單位之正式買賣合約內所定義之實用面積已包括非結構的預製外牆及幕牆，並由該非結構的預製外牆及幕牆之外圍起計。

# FLOOR PLANS OF RESIDENTIAL PROPERTIES IN THE PHASE

## 期數的住宅物業的樓面平面圖

### LEGEND OF THE TERMS AND ABBREVIATIONS USED ON THE FLOOR PLANS

#### 樓面平面圖中所使用之名詞及簡稱之圖例

R.C. ARCH. FEATURE	= REINFORCED CONCRETE ARCHITECTURAL FEATURE	= 鋼筋混凝土建築裝飾
R.C. ARCH. FEATURE BELOW	= REINFORCED CONCRETE ARCHITECTURAL FEATURE BELOW	= 鋼筋混凝土建築裝飾置下
R.C. ARCH. FEATURE WITH STONE CLADDING	= REINFORCED CONCRETE ARCHITECTURAL FEATURE WITH STONE CLADDING	= 裝有石覆蓋層板的鋼筋混凝土建築裝飾
R.C. COVER	= REINFORCED CONCRETE COVER	= 鋼筋混凝土上蓋
R.C. EAVES	= REINFORCED CONCRETE EAVES	= 鋼筋混凝土門簷
ROOF	= ROOF	= 天台
RS&MRR	= REFUSE STORAGE AND MATERIAL RECOVERY ROOM	= 垃圾及物料回收房
SHOWER	= SHOWER CUBICLE	= 淋浴間
ST. = STORE	= STORE ROOM	= 儲物房
STONE CLADDING	= STONE CLADDING	= 石覆蓋層板
STUDY RM.	= STUDY ROOM	= 書房
SWIMMING POOL	= SWIMMING POOL	= 泳池
TO BE ACCESS BY GONDOLA FOR DRAINAGE MAINTENANCE	= TO BE ACCESS BY GONDOLA FOR DRAINAGE MAINTENANCE	= 供排水渠維修用之吊船停泊位置
TOP OF ALUM. FEATURE = TOP OF ALUM. ARCH. FEATURE	= TOP OF ALUMINIUM ARCHITECTURAL FEATURE	= 鋁質建築裝飾上蓋
UP	= UP	= 上
U.P.	= UTILITY PLATFORM	= 工作平台
U.P. ABOVE	= UTILITY PLATFORM ABOVE	= 工作平台置上
U.R.	= UTILITY ROOM	= 工作間
W.M.C.	= WATER METER CABINET	= 水錶櫃
WATER TANK ACCESS ROOM	= WATER TANK ACCESS ROOM	= 水缸通道房
	= WINDOW WITH SLIDING PANEL BEHIND (ACOUSTIC WINDOW (BAFFLE TYPE))	= 背面裝設滑動嵌板的窗戶 (減音窗 (擋音式))

#### Notes :

1. There may be architectural features on external walls of some floors.
2. Common pipes or ducts exposed and/or enclosed in aluminium cladding are located at/adjacent to balcony and/or flat roof and/or garden and/or roof and/or utility platform and/or air-conditioner platform and/or external wall of some residential units.
3. There are sunken slabs and/ or ceiling bulkheads and/or false ceiling at living rooms, dining rooms, bedrooms, study rooms, utility rooms, corridors, bathrooms, store rooms, lavatories and kitchens of some residential units for the air-conditioning system and/or electrical & mechanical services. There are exposed pipes or ductings for air-conditioning system and/or electrical and mechanical services within some utility rooms.
4. The internal ceiling height within some units may vary due to structural, architectural and/or decoration design variations.
5. Balconies and utility platforms are non-enclosed areas.
6. Symbols of fittings and fitments shown on the floor plans, such as bathtubs, sink, water closets, shower, sink counter etc, are architectural symbols extracted from the latest approved general building plans for general indication only.
7. There are non-structural prefabricated external walls and curtain walls in the residential units. The Saleable Area as defined in the Formal Agreement for Sale and Purchase of a residential unit has included the non-structural prefabricated external walls and curtain walls, and is measured from the exterior of such non-structural prefabricated external walls and curtain walls.

#### 備註：

1. 部份樓層外牆設有建築裝飾。
2. 部份住宅單位的露台及/或平台及/或花園及/或天台及/或工作平台及/或冷氣機平台及/或外牆設有外露及/或鋁質覆蓋層內藏之公用喉管或管道。
3. 部份住宅單位的客廳、飯廳、睡房、書房、工作間、走廊、浴室、儲物房、洗手間以及廚房有跌級樓板及/或假陣及/或假天花用以裝置冷氣系統及/或機電設備。部份工作間內設有冷氣系統及/或機電設備之外露喉管或管道。
4. 部份單位之室內天花高度將會因應結構、建築及/或裝修設計上的需要而有差異。
5. 露台及工作平台為不可封閉的地方。
6. 樓面平面圖上所顯示的形象裝置符號，例如浴缸、洗滌盆、坐廁、花灑、洗滌盆櫃等乃摘自最新的經批准的建築圖則，只作一般性標誌。
7. 住宅單位有非結構的預製外牆及幕牆。住宅單位之正式買賣合約內所定義之實用面積已包括非結構的預製外牆及幕牆，並由該非結構的預製外牆及幕牆之外圍起計。



# FLOOR PLANS OF RESIDENTIAL PROPERTIES IN THE PHASE

## 期數的住宅物業的樓面平面圖

Block Name 大廈名稱	Floor 樓層	Flat 單位	The floor-to-floor height of each residential property (mm) 每個住宅物業的層與層之間的高度（毫米）	The thickness of the floor slabs (excluding plaster) of each residential property (mm) 每個住宅物業的樓板（不包括灰泥）的厚度（毫米）
Crown Tower	6/F 6樓	Garden Suite A	3145, 3345, 3495, 3595	150
		Garden Suite B	3145, 3345, 3495, 3595	150

- The internal areas of the residential properties on the upper floors will generally be slightly larger than those on the lower floors because of the reducing thickness of the structural walls on the upper floors. (This does not apply to the residential properties in the Phase because the design of the Phase does not involve reducing thickness of structural walls of residential properties on the upper floors and hence internal areas of those residential properties will not be increased.)

- 因住宅物業的較高的樓層結構牆的厚度遞減，較高樓層的內部面積，一般比較低樓層的內部面積稍大。(不適用於期數內的住宅物業，因期數的設計是不牽涉較高樓層的住宅物業的結構牆的厚度遞減。因此，該等住宅物業的內部面積不會增加。)

Notes:

1. The dimensions of floor plans are all structural dimensions in millimetre.
2. Please refer to pages AL001-AL004 of this sales brochure for the legend of the terms and abbreviations used on the floor plans and notes that are applicable thereto.

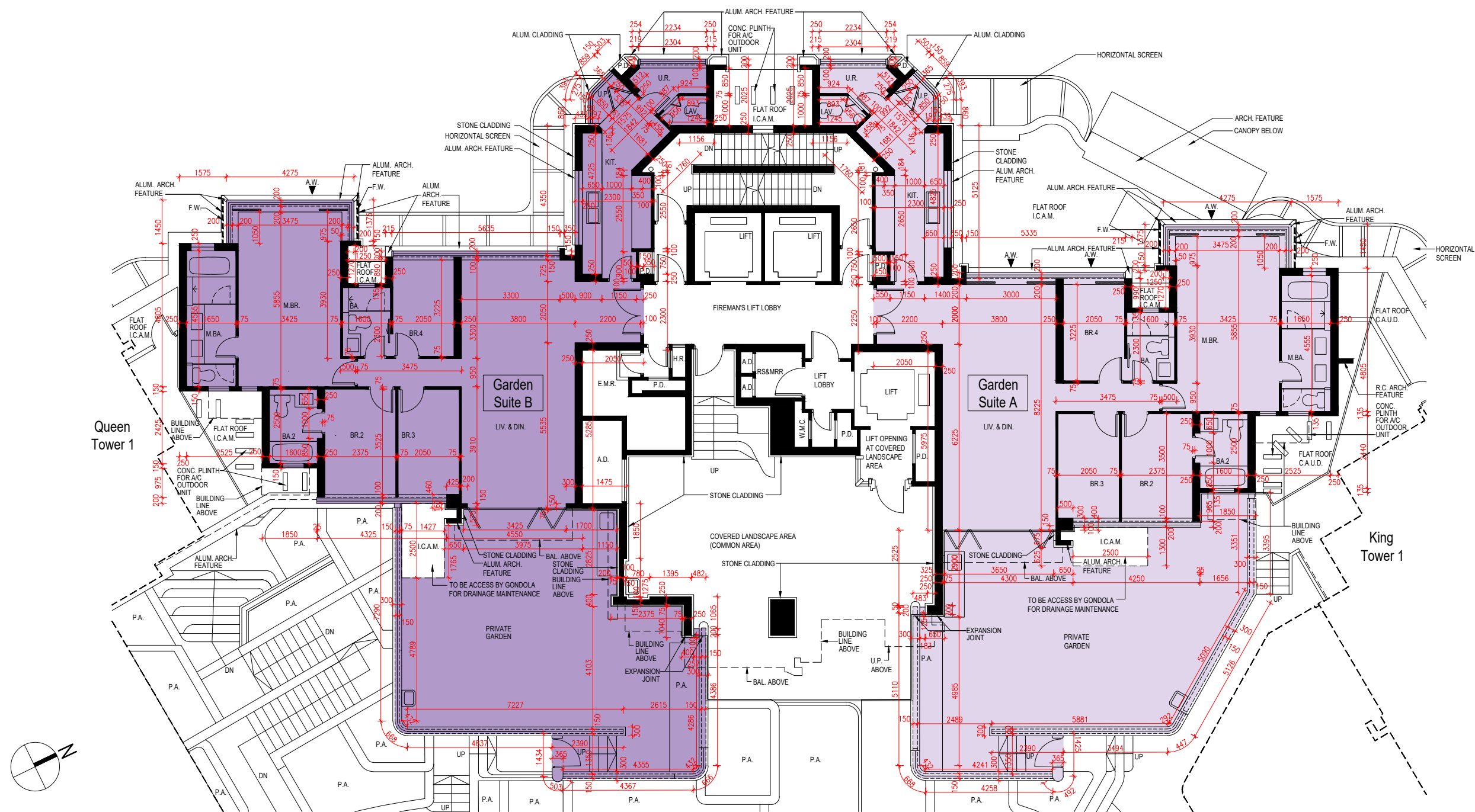
備註：

1. 樓面平面圖所列之尺寸為以毫米標示之建築結構尺寸。
2. 有關樓面平面圖中所使用之名詞及簡稱之圖例及其適用的備註，請參閱本售樓說明書第AL001至AL004頁。

# FLOOR PLANS OF RESIDENTIAL PROPERTIES IN THE PHASE

期數的住宅物業的樓面平面圖

Crown Tower 6/F Floor Plan  
6樓樓面平面圖



Scale 比例:  
0M (米) 5M (米) 10M (米)



# FLOOR PLANS OF RESIDENTIAL PROPERTIES IN THE PHASE

## 期數的住宅物業的樓面平面圖

Block Name 大廈名稱	Floor 樓層	Flat 單位	The floor-to-floor height of each residential property (mm) 每個住宅物業的層與層之間的高度（毫米）	The thickness of the floor slabs (excluding plaster) of each residential property (mm) 每個住宅物業的樓板（不包括灰泥）的厚度（毫米）
Crown Tower	7/F - 12/F, 15/F - 23/F 7樓至12樓、 15樓至23樓	A	3025, 3225, 3375	150
		B	2925, 3025, 3225, 3375	150
		C	3025, 3225, 3375	150
	25/F 25樓	A	3095, 3295, 3445	150
		B	3375, 3405, 3445	150, 220
		C	3095, 3295, 3445	150

- The internal areas of the residential properties on the upper floors will generally be slightly larger than those on the lower floors because of the reducing thickness of the structural walls on the upper floors. (This does not apply to the residential properties in the Phase because the design of the Phase does not involve reducing thickness of structural walls of residential properties on the upper floors and hence internal areas of those residential properties will not be increased.)

- 因住宅物業的較高的樓層結構牆的厚度遞減，較高樓層的內部面積，一般比較低樓層的內部面積稍大。(不適用於期數內的住宅物業，因期數的設計是不牽涉較高樓層的住宅物業的結構牆的厚度遞減。因此，該等住宅物業的內部面積不會增加。)

- Notes:
- The dimensions of floor plans are all structural dimensions in millimetre.
  - Please refer to pages AL001-AL004 of this sales brochure for the legend of the terms and abbreviations used on the floor plans and notes that are applicable thereto.

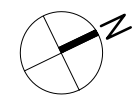
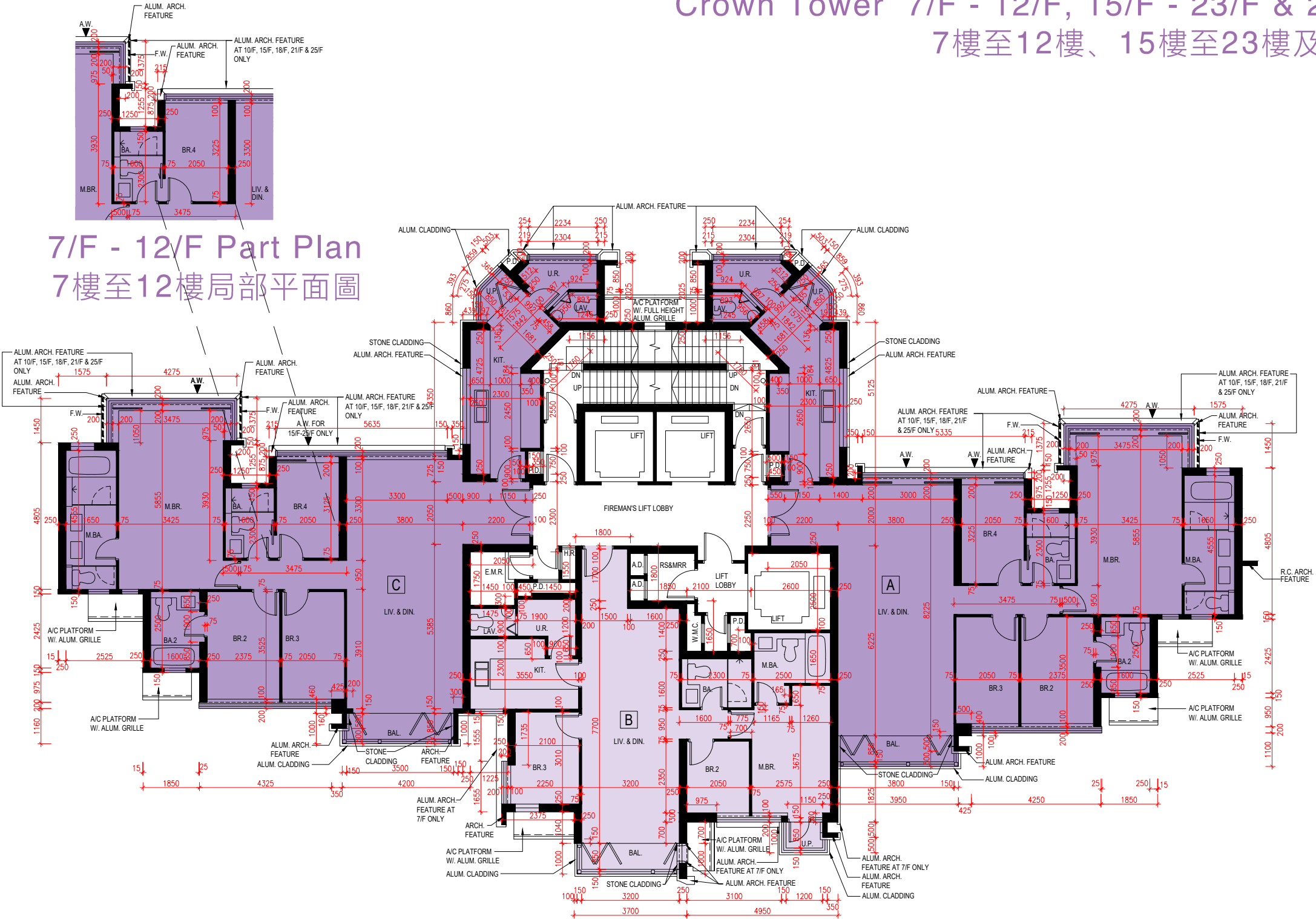
- 備註：
- 樓面平面圖所列之尺寸為以毫米標示之建築結構尺寸。
  - 有關樓面平面圖中所使用之名詞及簡稱之圖例及其適用的備註，請參閱本售樓說明書第AL001至AL004頁。

# FLOOR PLANS OF RESIDENTIAL PROPERTIES IN THE PHASE

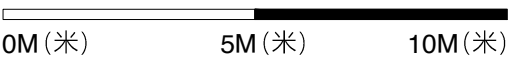
## 期數的住宅物業的樓面平面圖

### Crown Tower 7/F - 12/F, 15/F - 23/F & 25/F Floor Plan

#### 7樓至12樓、15樓至23樓及25樓樓面平面圖



Scale 比例:





# FLOOR PLANS OF RESIDENTIAL PROPERTIES IN THE PHASE

## 期數的住宅物業的樓面平面圖

Block Name 大廈名稱	Floor 樓層	Flat 單位	The floor-to-floor height of each residential property (mm) 每個住宅物業的層與層之間的高度（毫米）	The thickness of the floor slabs (excluding plaster) of each residential property (mm) 每個住宅物業的樓板（不包括灰泥）的厚度（毫米）
Crown Tower	26/F 26樓	Villa A	3095, 3295, 3445	150
		Villa B	3095, 3295, 3445	150, 175

- The internal areas of the residential properties on the upper floors will generally be slightly larger than those on the lower floors because of the reducing thickness of the structural walls on the upper floors. (This does not apply to the residential properties in the Phase because the design of the Phase does not involve reducing thickness of structural walls of residential properties on the upper floors and hence internal areas of those residential properties will not be increased.)

- 因住宅物業的較高的樓層結構牆的厚度遞減，較高樓層的內部面積，一般比較低樓層的內部面積稍大。(不適用於期數內的住宅物業，因期數的設計是不牽涉較高樓層的住宅物業的結構牆的厚度遞減。因此，該等住宅物業的內部面積不會增加。)

Notes:

1. The dimensions of floor plans are all structural dimensions in millimetre.
2. Please refer to pages AL001-AL004 of this sales brochure for the legend of the terms and abbreviations used on the floor plans and notes that are applicable thereto.

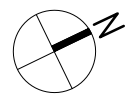
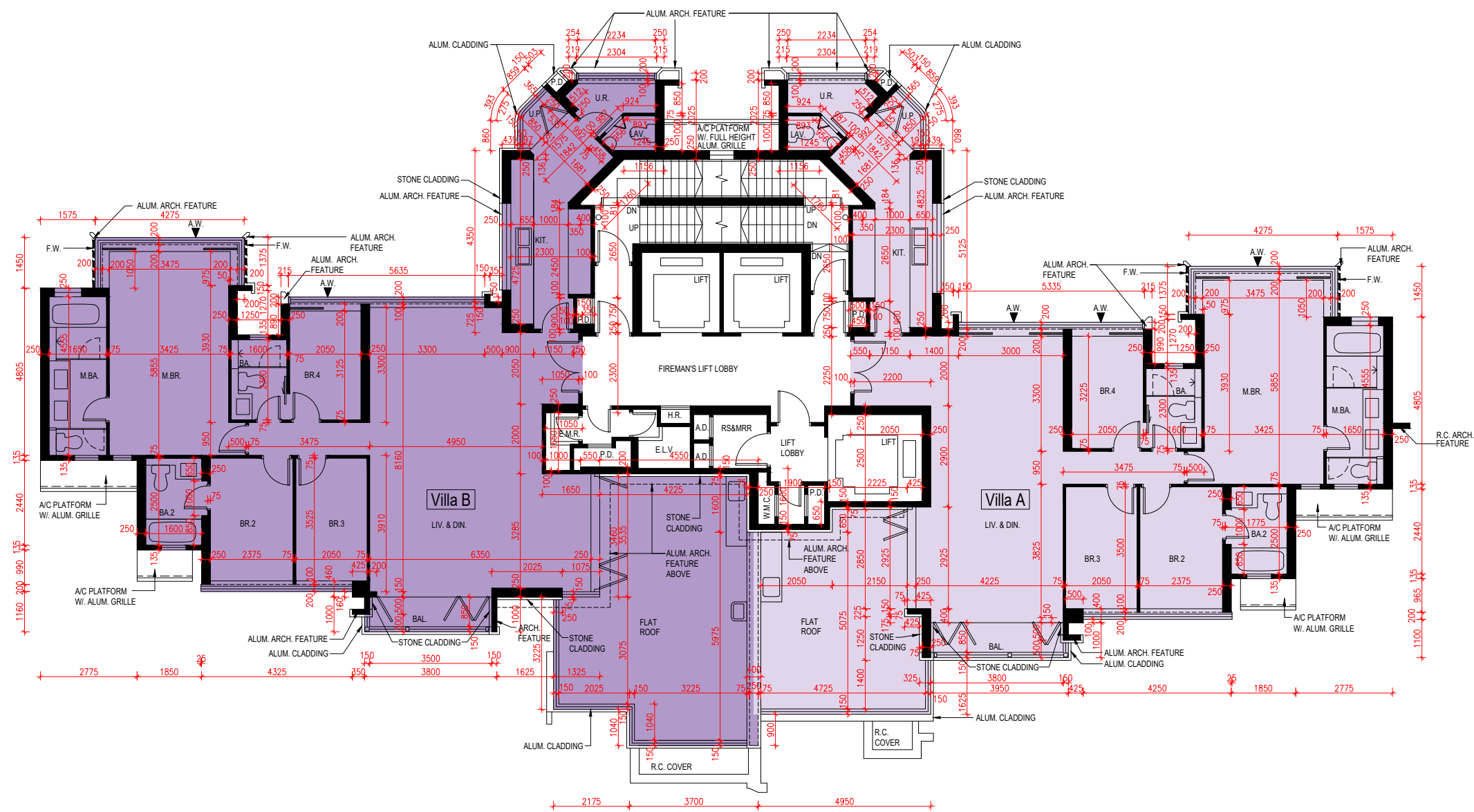
備註：

1. 樓面平面圖所列之尺寸為以毫米標示之建築結構尺寸。
2. 有關樓面平面圖中所使用之名詞及簡稱之圖例及其適用的備註，請參閱本售樓說明書第AL001至AL004頁。

# FLOOR PLANS OF RESIDENTIAL PROPERTIES IN THE PHASE

## 期數的住宅物業的樓面平面圖

Crown Tower 26/F Floor Plan  
26樓樓面平面圖



Scale 比例:





# FLOOR PLANS OF RESIDENTIAL PROPERTIES IN THE PHASE

## 期數的住宅物業的樓面平面圖

Block Name 大廈名稱	Floor 樓層	Flat 單位	The floor-to-floor height of each residential property (mm) 每個住宅物業的層與層之間的高度（毫米）	The thickness of the floor slabs (excluding plaster) of each residential property (mm) 每個住宅物業的樓板（不包括灰泥）的厚度（毫米）
Crown Tower	27/F 27樓	Penthouse A	3490, 3515	150
		Penthouse B	3490, 3515, 3640	150

- The internal areas of the residential properties on the upper floors will generally be slightly larger than those on the lower floors because of the reducing thickness of the structural walls on the upper floors. (This does not apply to the residential properties in the Phase because the design of the Phase does not involve reducing thickness of structural walls of residential properties on the upper floors and hence internal areas of those residential properties will not be increased.)

- 因住宅物業的較高的樓層結構牆的厚度遞減，較高樓層的內部面積，一般比較低樓層的內部面積稍大。(不適用於期數內的住宅物業，因期數的設計是不牽涉較高樓層的住宅物業的結構牆的厚度遞減。因此，該等住宅物業的內部面積不會增加。)

Notes:

1. The dimensions of floor plans are all structural dimensions in millimetre.
2. Please refer to pages AL001-AL004 of this sales brochure for the legend of the terms and abbreviations used on the floor plans and notes that are applicable thereto.

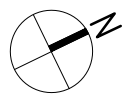
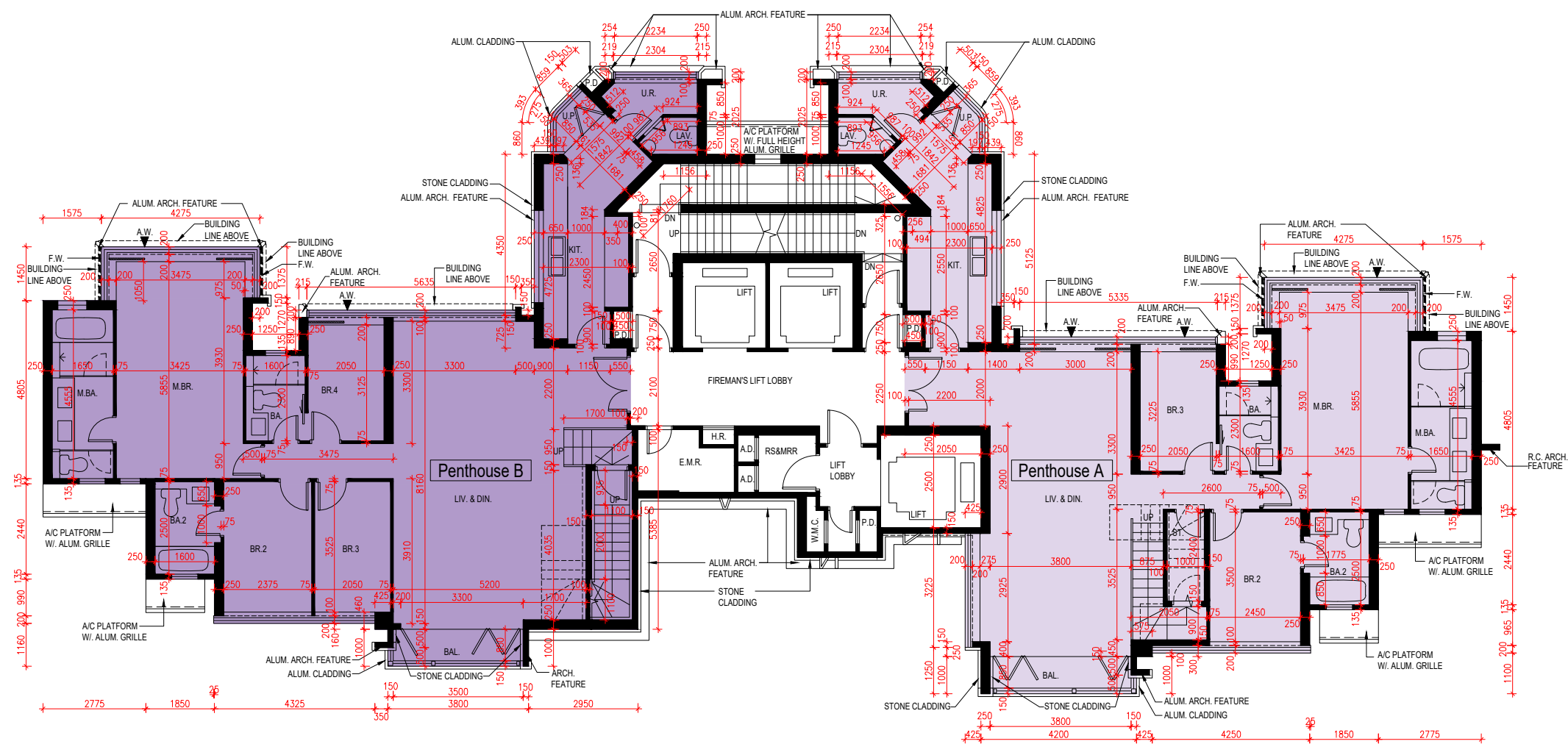
備註：

1. 樓面平面圖所列之尺寸為以毫米標示之建築結構尺寸。
2. 有關樓面平面圖中所使用之名詞及簡稱之圖例及其適用的備註，請參閱本售樓說明書第AL001至AL004頁。

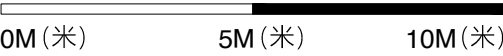
# FLOOR PLANS OF RESIDENTIAL PROPERTIES IN THE PHASE

## 期數的住宅物業的樓面平面圖

Crown Tower 27/F Floor Plan  
27樓樓面平面圖



Scale 比例:





# FLOOR PLANS OF RESIDENTIAL PROPERTIES IN THE PHASE

## 期數的住宅物業的樓面平面圖

Block Name 大廈名稱	Floor 樓層	Flat 單位	The floor-to-floor height of each residential property (mm) 每個住宅物業的層與層之間的高度（毫米）	The thickness of the floor slabs (excluding plaster) of each residential property (mm) 每個住宅物業的樓板（不包括灰泥）的厚度（毫米）
Crown Tower	Roof 天台	Penthouse A	Not Applicable 不適用	Not Applicable 不適用
		Penthouse B	Not Applicable 不適用	Not Applicable 不適用

- The internal areas of the residential properties on the upper floors will generally be slightly larger than those on the lower floors because of the reducing thickness of the structural walls on the upper floors. (This does not apply to the residential properties in the Phase because the design of the Phase does not involve reducing thickness of structural walls of residential properties on the upper floors and hence internal areas of those residential properties will not be increased.)

- 因住宅物業的較高的樓層結構牆的厚度遞減，較高樓層的內部面積，一般比較低樓層的內部面積稍大。(不適用於期數內的住宅物業，因期數的設計是不牽涉較高樓層的住宅物業的結構牆的厚度遞減。因此，該等住宅物業的內部面積不會增加。)

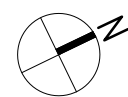
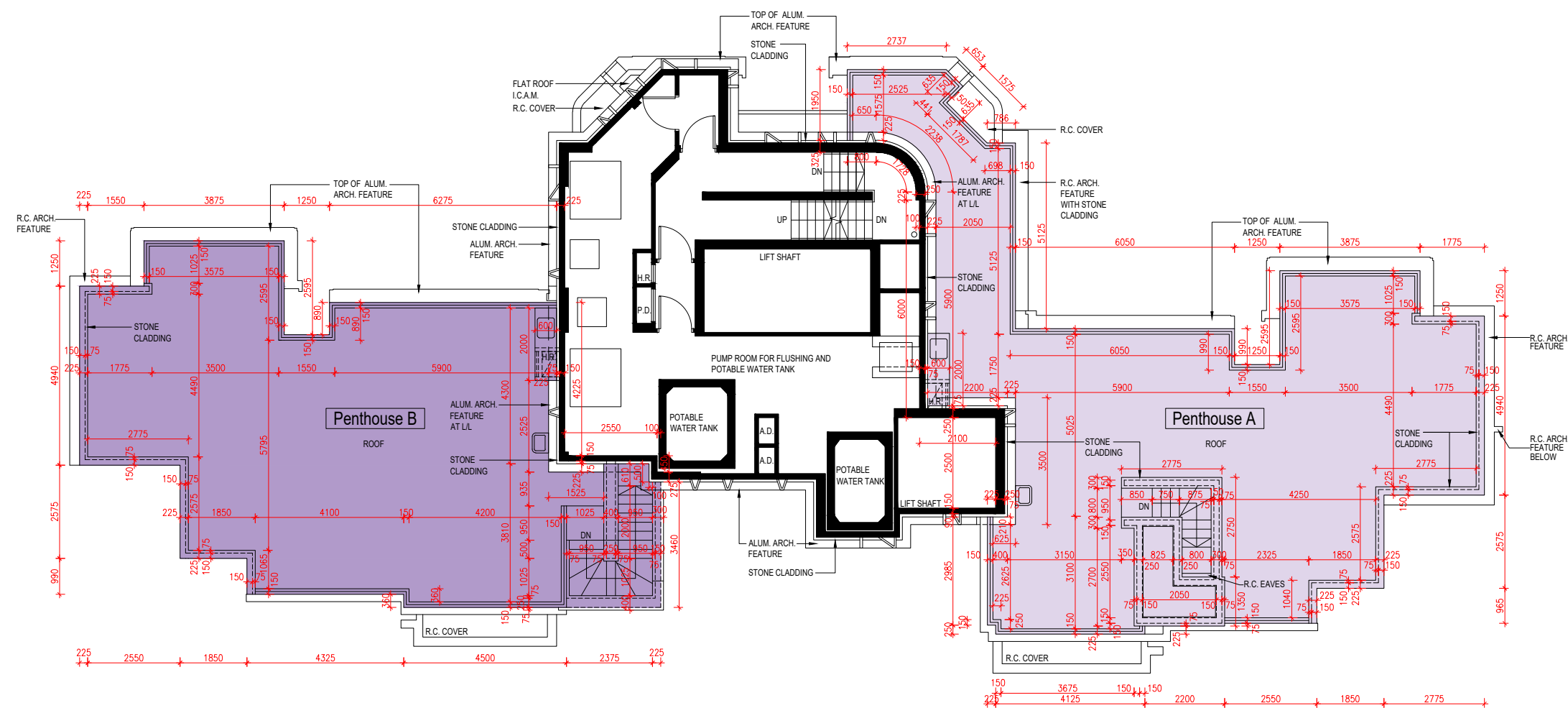
Notes:  
1. The dimensions of floor plans are all structural dimensions in millimetre.  
2. Please refer to pages AL001-AL004 of this sales brochure for the legend of the terms and abbreviations used on the floor plans and notes that are applicable thereto.

備註：  
1. 樓面平面圖所列之尺寸為以毫米標示之建築結構尺寸。  
2. 有關樓面平面圖中所使用之名詞及簡稱之圖例及其適用的備註，請參閱本售樓說明書第AL001至AL004頁。

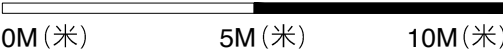
# FLOOR PLANS OF RESIDENTIAL PROPERTIES IN THE PHASE

## 期數的住宅物業的樓面平面圖

Crown Tower Roof Floor Plan  
天台樓面平面圖



Scale 比例:



# FLOOR PLANS OF RESIDENTIAL PROPERTIES IN THE PHASE

## 期數的住宅物業的樓面平面圖

Block Name 大廈名稱	Floor 樓層	Flat 單位	The floor-to-floor height of each residential property (mm) 每個住宅物業的層與層之間的高度（毫米）	The thickness of the floor slabs (excluding plaster) of each residential property (mm) 每個住宅物業的樓板（不包括灰泥）的厚度（毫米）
Queen Tower 1	6/F 6樓	Garden Suite A	3145, 3345, 3495, 3595	150, 175
		Garden Suite B	3145, 3345, 3495, 3595	150, 175

- The internal areas of the residential properties on the upper floors will generally be slightly larger than those on the lower floors because of the reducing thickness of the structural walls on the upper floors. (This does not apply to the residential properties in the Phase because the design of the Phase does not involve reducing thickness of structural walls of residential properties on the upper floors and hence internal areas of those residential properties will not be increased.)

- 因住宅物業的較高的樓層結構牆的厚度遞減，較高樓層的內部面積，一般比較低樓層的內部面積稍大。(不適用於期數內的住宅物業，因期數的設計是不牽涉較高樓層的住宅物業的結構牆的厚度遞減。因此，該等住宅物業的內部面積不會增加。)

Notes:

1. The dimensions of floor plans are all structural dimensions in millimetre.
2. Please refer to pages AL001-AL004 of this sales brochure for the legend of the terms and abbreviations used on the floor plans and notes that are applicable thereto.

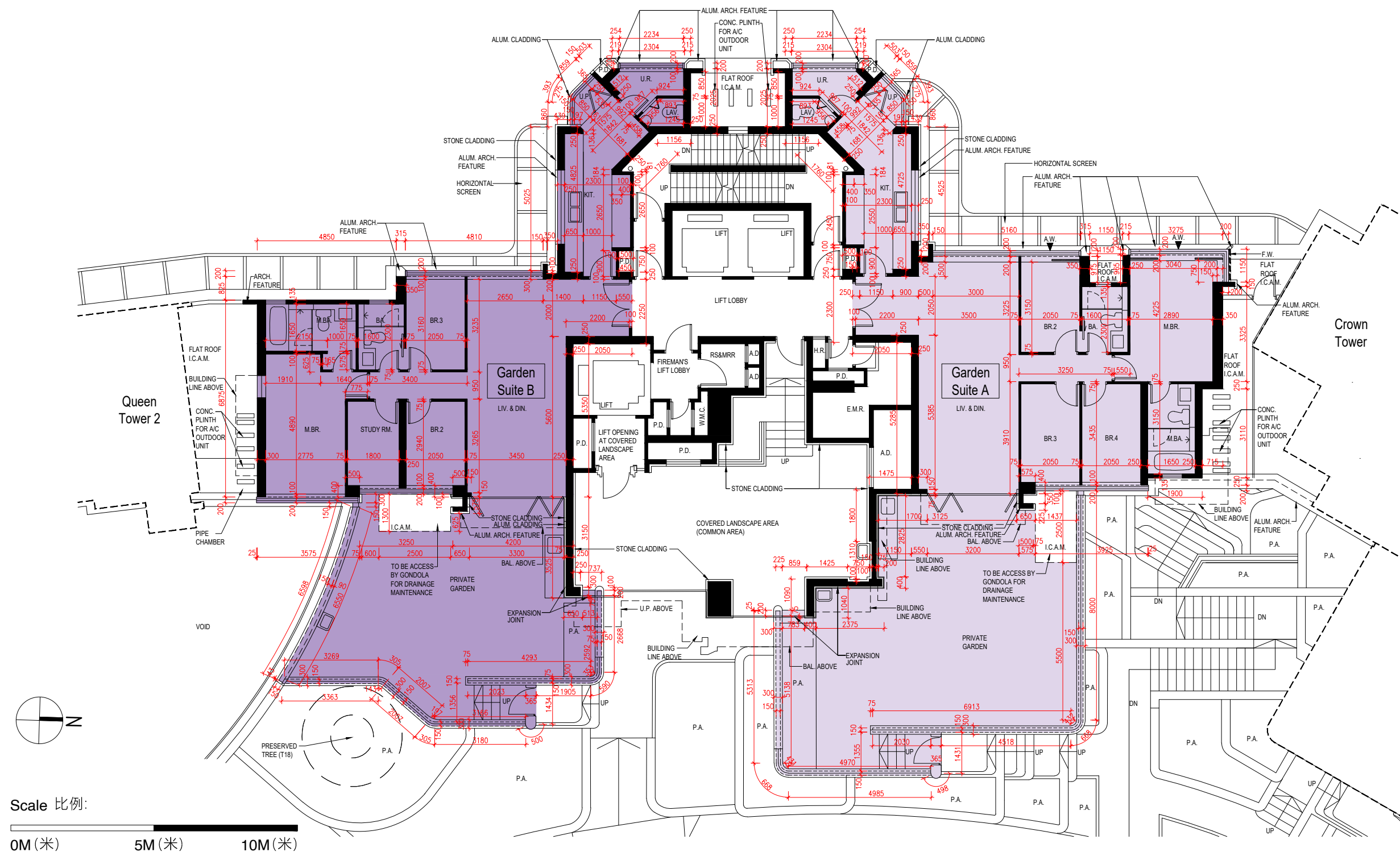
備註：

1. 樓面平面圖所列之尺寸為以毫米標示之建築結構尺寸。
2. 有關樓面平面圖中所使用之名詞及簡稱之圖例及其適用的備註，請參閱本售樓說明書第AL001至AL004頁。



## FLOOR PLANS OF RESIDENTIAL PROPERTIES IN THE PHASE 期數的住宅物業的樓面平面圖

## Queen Tower 1 6/F Floor Plan 6樓樓面平面圖



# FLOOR PLANS OF RESIDENTIAL PROPERTIES IN THE PHASE

## 期數的住宅物業的樓面平面圖

Block Name 大廈名稱	Floor 樓層	Flat 單位	The floor-to-floor height of each residential property (mm) 每個住宅物業的層與層之間的高度（毫米）	The thickness of the floor slabs (excluding plaster) of each residential property (mm) 每個住宅物業的樓板（不包括灰泥）的厚度（毫米）
Queen Tower 1	7/F - 12/F, 15/F - 23/F 7樓至12樓、 15樓至23樓	A	3025, 3225, 3375	150, 175
		B	3025, 3225, 3375	150, 175
		C	3025, 3225, 3375	150, 175
	25/F 25樓	A	3095, 3295, 3445	150, 175
		B	3375, 3405, 3445	150, 175
		C	3095, 3295, 3445	150, 175

- The internal areas of the residential properties on the upper floors will generally be slightly larger than those on the lower floors because of the reducing thickness of the structural walls on the upper floors. (This does not apply to the residential properties in the Phase because the design of the Phase does not involve reducing thickness of structural walls of residential properties on the upper floors and hence internal areas of those residential properties will not be increased.)

- 因住宅物業的較高的樓層結構牆的厚度遞減，較高樓層的內部面積，一般比較低樓層的內部面積稍大。(不適用於期數內的住宅物業，因期數的設計是不牽涉較高樓層的住宅物業的結構牆的厚度遞減。因此，該等住宅物業的內部面積不會增加。)

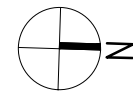
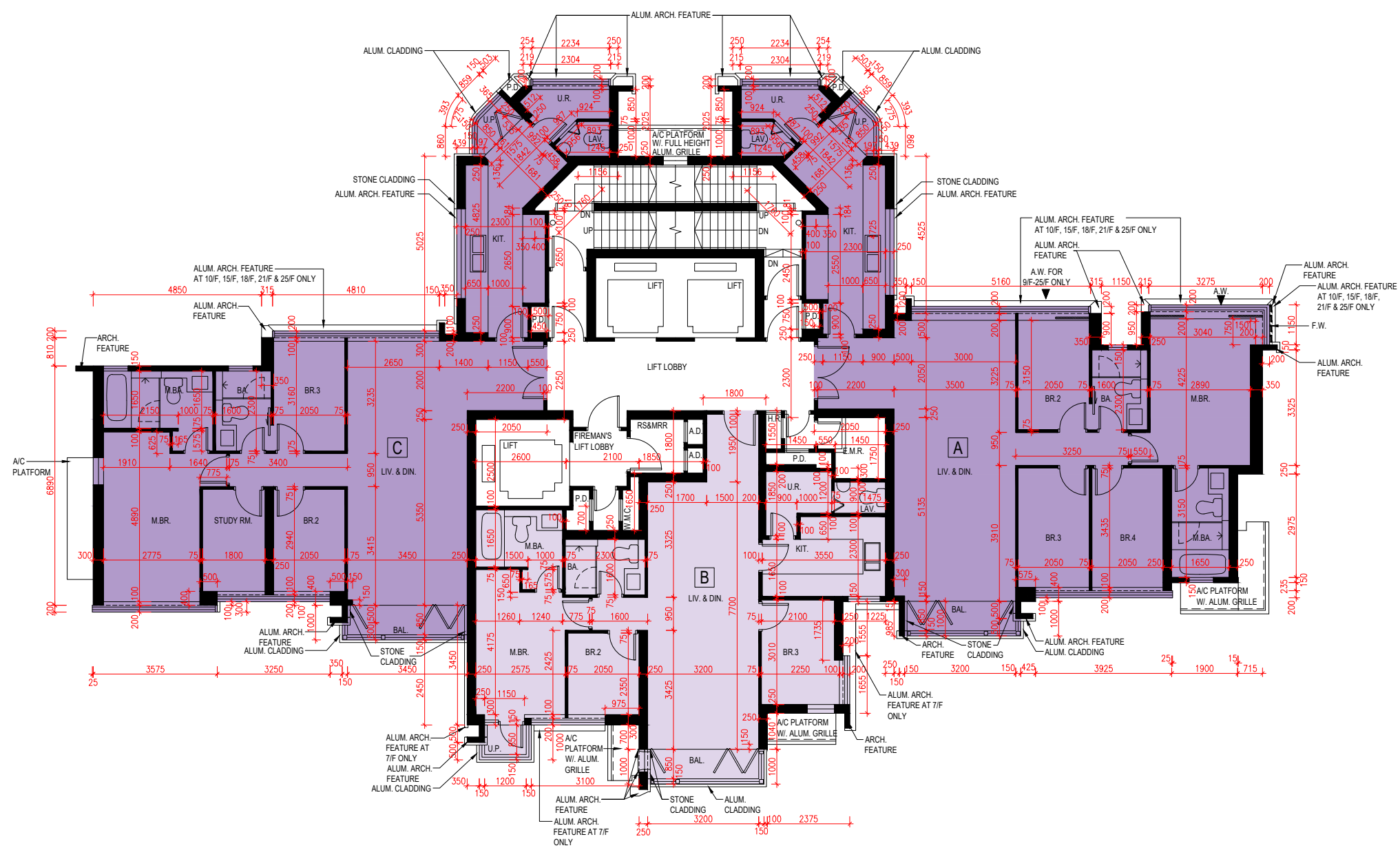
- Notes:
1. The dimensions of floor plans are all structural dimensions in millimetre.
  2. Please refer to pages AL001-AL004 of this sales brochure for the legend of the terms and abbreviations used on the floor plans and notes that are applicable thereto.

- 備註：
1. 樓面平面圖所列之尺寸為以毫米標示之建築結構尺寸。
  2. 有關樓面平面圖中所使用之名詞及簡稱之圖例及其適用的備註，請參閱本售樓說明書第AL001至AL004頁。

# FLOOR PLANS OF RESIDENTIAL PROPERTIES IN THE PHASE

## 期數的住宅物業的樓面平面圖

Queen Tower 1 7/F - 12/F, 15/F - 23/F & 25/F Floor Plan  
7樓至12樓、15樓至23樓及25樓樓面平面圖



Scale 比例:

0M (米)      5M (米)      10M (米)



# FLOOR PLANS OF RESIDENTIAL PROPERTIES IN THE PHASE

## 期數的住宅物業的樓面平面圖

Block Name 大廈名稱	Floor 樓層	Flat 單位	The floor-to-floor height of each residential property (mm) 每個住宅物業的層與層之間的高度（毫米）	The thickness of the floor slabs (excluding plaster) of each residential property (mm) 每個住宅物業的樓板（不包括灰泥）的厚度（毫米）
Queen Tower 1	26/F 26樓	Villa A	3095, 3295, 3445	150, 175
		Villa B	3095, 3295, 3445	150

- The internal areas of the residential properties on the upper floors will generally be slightly larger than those on the lower floors because of the reducing thickness of the structural walls on the upper floors. (This does not apply to the residential properties in the Phase because the design of the Phase does not involve reducing thickness of structural walls of residential properties on the upper floors and hence internal areas of those residential properties will not be increased.)

- 因住宅物業的較高的樓層結構牆的厚度遞減，較高樓層的內部面積，一般比較低樓層的內部面積稍大。(不適用於期數內的住宅物業，因期數的設計是不牽涉較高樓層的住宅物業的結構牆的厚度遞減。因此，該等住宅物業的內部面積不會增加。)

Notes:

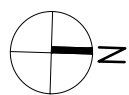
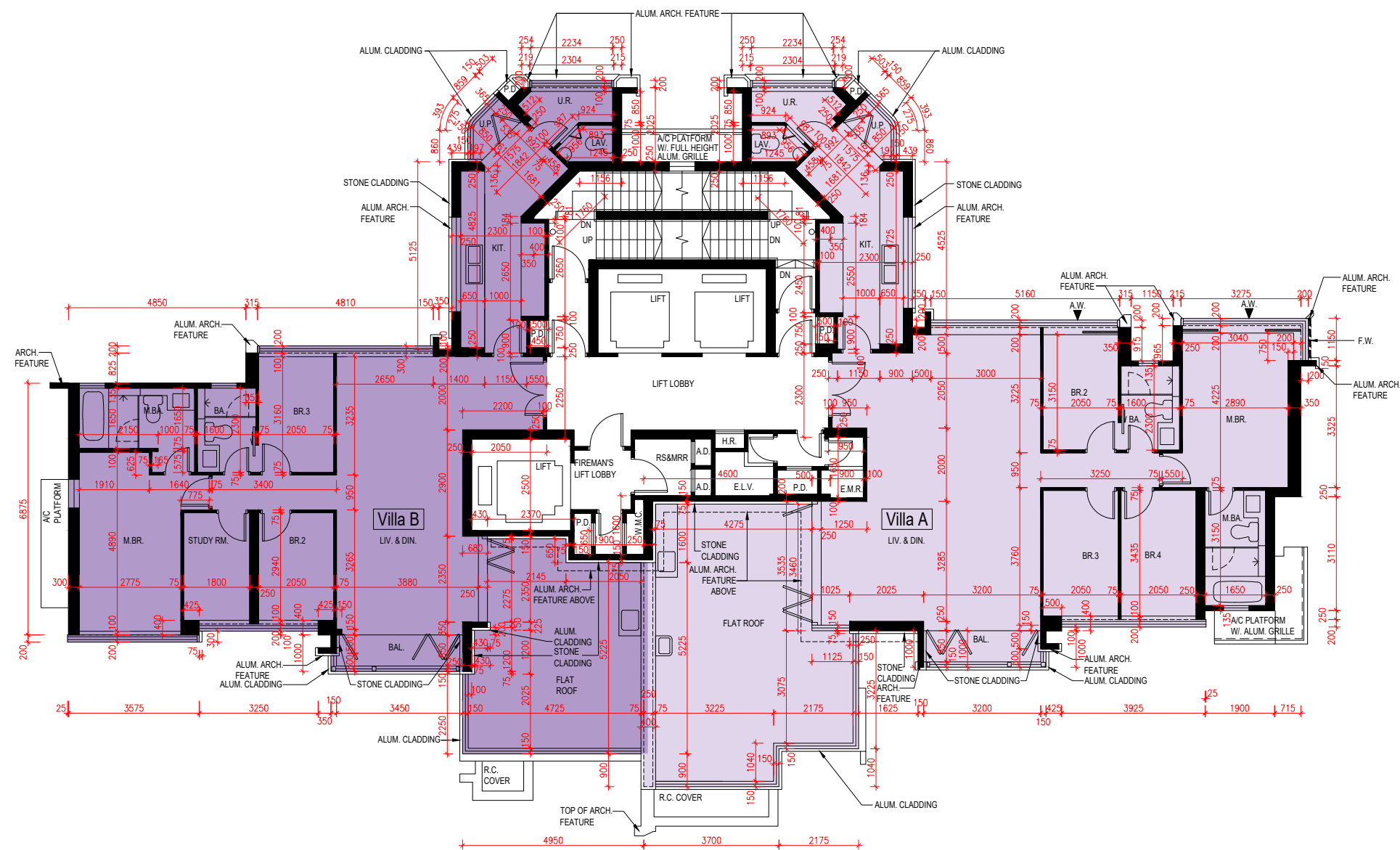
1. The dimensions of floor plans are all structural dimensions in millimetre.
2. Please refer to pages AL001-AL004 of this sales brochure for the legend of the terms and abbreviations used on the floor plans and notes that are applicable thereto.

備註：

1. 樓面平面圖所列之尺寸為以毫米標示之建築結構尺寸。
2. 有關樓面平面圖中所使用之名詞及簡稱之圖例及其適用的備註，請參閱本售樓說明書第AL001至AL004頁。

FLOOR PLANS OF RESIDENTIAL PROPERTIES IN THE PHASE  
期數的住宅物業的樓面平面圖

Queen Tower 1 26/F Floor Plan  
26樓樓面平面圖



Scale 比例:  
0M (米) 5M (米) 10M (米)

# FLOOR PLANS OF RESIDENTIAL PROPERTIES IN THE PHASE

## 期數的住宅物業的樓面平面圖

Block Name 大廈名稱	Floor 樓層	Flat 單位	The floor-to-floor height of each residential property (mm) 每個住宅物業的層與層之間的高度（毫米）	The thickness of the floor slabs (excluding plaster) of each residential property (mm) 每個住宅物業的樓板（不包括灰泥）的厚度（毫米）
Queen Tower 1	27/F 27樓	Penthouse A	3490, 3515	150, 175
		Penthouse B	3490, 3515, 3640	150

- The internal areas of the residential properties on the upper floors will generally be slightly larger than those on the lower floors because of the reducing thickness of the structural walls on the upper floors. (This does not apply to the residential properties in the Phase because the design of the Phase does not involve reducing thickness of structural walls of residential properties on the upper floors and hence internal areas of those residential properties will not be increased.)

- 因住宅物業的較高的樓層結構牆的厚度遞減，較高樓層的內部面積，一般比較低樓層的內部面積稍大。(不適用於期數內的住宅物業，因期數的設計是不牽涉較高樓層的住宅物業的結構牆的厚度遞減。因此，該等住宅物業的內部面積不會增加。)

Notes:

1. The dimensions of floor plans are all structural dimensions in millimetre.
2. Please refer to pages AL001-AL004 of this sales brochure for the legend of the terms and abbreviations used on the floor plans and notes that are applicable thereto.

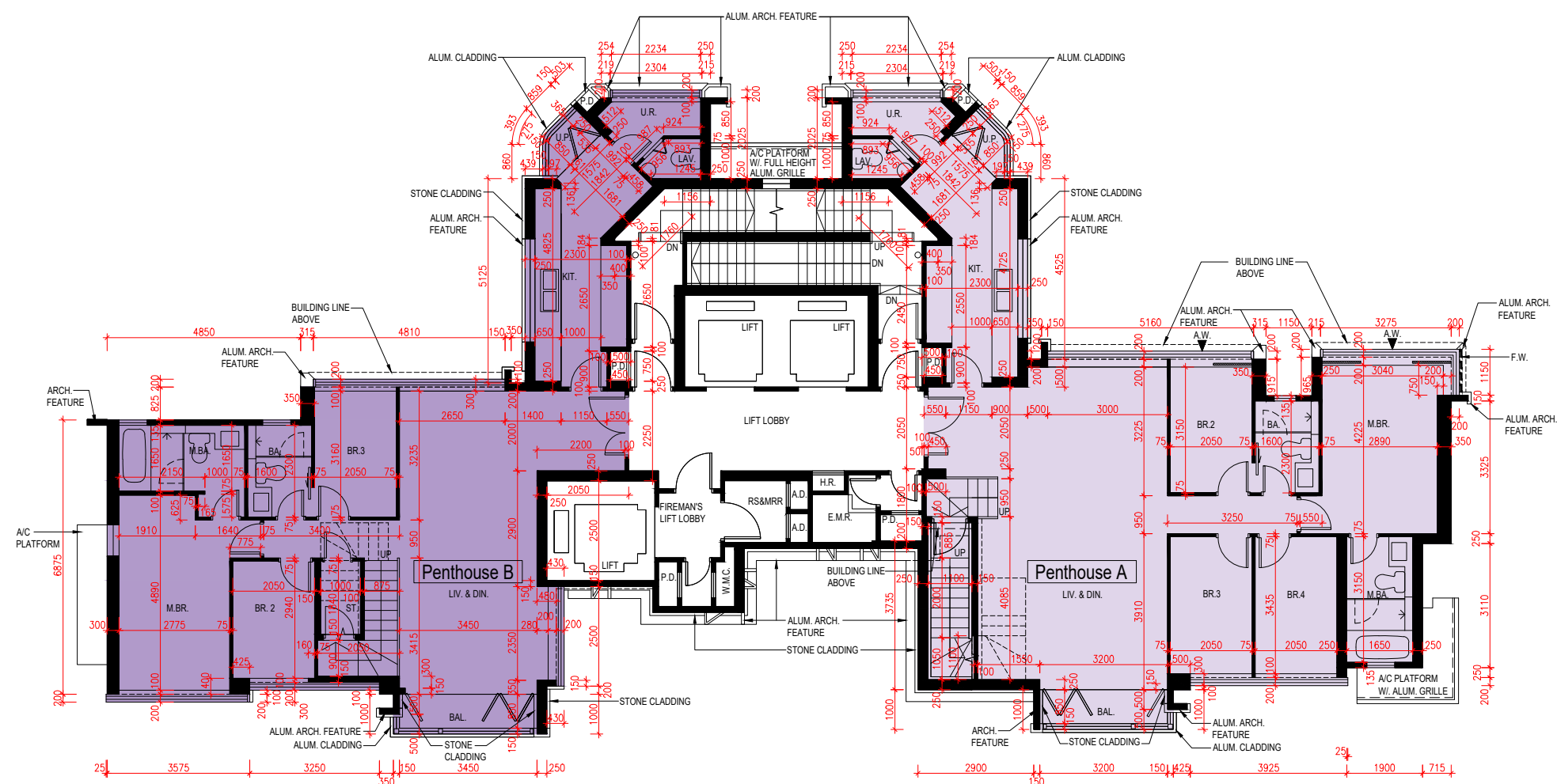
備註：

1. 樓面平面圖所列之尺寸為以毫米標示之建築結構尺寸。
2. 有關樓面平面圖中所使用之名詞及簡稱之圖例及其適用的備註，請參閱本售樓說明書第AL001至AL004頁。



## FLOOR PLANS OF RESIDENTIAL PROPERTIES IN THE PHASE 期數的住宅物業的樓面平面圖

## Queen Tower 1 27/F Floor Plan 27樓樓面平面圖



Scale 比例:



# FLOOR PLANS OF RESIDENTIAL PROPERTIES IN THE PHASE

## 期數的住宅物業的樓面平面圖

Block Name 大廈名稱	Floor 樓層	Flat 單位	The floor-to-floor height of each residential property (mm) 每個住宅物業的層與層之間的高度（毫米）	The thickness of the floor slabs (excluding plaster) of each residential property (mm) 每個住宅物業的樓板（不包括灰泥）的厚度（毫米）
Queen Tower 1	Roof 天台	Penthouse A	Not Applicable 不適用	Not Applicable 不適用
		Penthouse B	Not Applicable 不適用	Not Applicable 不適用

- The internal areas of the residential properties on the upper floors will generally be slightly larger than those on the lower floors because of the reducing thickness of the structural walls on the upper floors. (This does not apply to the residential properties in the Phase because the design of the Phase does not involve reducing thickness of structural walls of residential properties on the upper floors and hence internal areas of those residential properties will not be increased.)

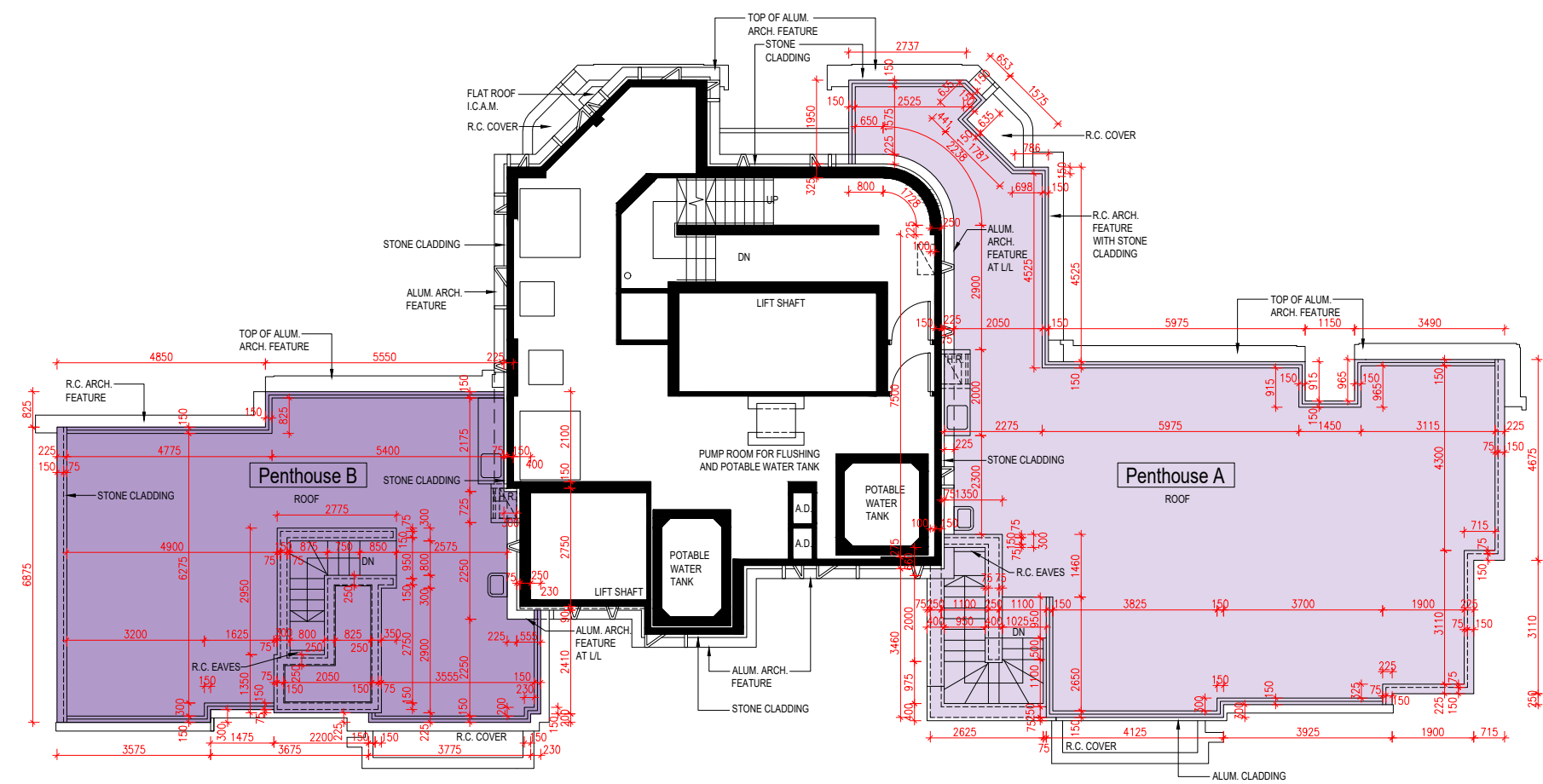
- 因住宅物業的較高的樓層結構牆的厚度遞減，較高樓層的內部面積，一般比較低樓層的內部面積稍大。(不適用於期數內的住宅物業，因期數的設計是不牽涉較高樓層的住宅物業的結構牆的厚度遞減。因此，該等住宅物業的內部面積不會增加。)

- Notes:
1. The dimensions of floor plans are all structural dimensions in millimetre.
  2. Please refer to pages AL001-AL004 of this sales brochure for the legend of the terms and abbreviations used on the floor plans and notes that are applicable thereto.

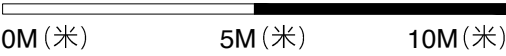
- 備註：
1. 樓面平面圖所列之尺寸為以毫米標示之建築結構尺寸。
  2. 有關樓面平面圖中所使用之名詞及簡稱之圖例及其適用的備註，請參閱本售樓說明書第AL001至AL004頁。

FLOOR PLANS OF RESIDENTIAL PROPERTIES IN THE PHASE  
期數的住宅物業的樓面平面圖

Queen Tower 1 Roof Floor Plan  
天台樓面平面圖



Scale 比例:





# FLOOR PLANS OF RESIDENTIAL PROPERTIES IN THE PHASE

## 期數的住宅物業的樓面平面圖

Block Name 大廈名稱	Floor 樓層	Flat 單位	The floor-to-floor height of each residential property (mm) 每個住宅物業的層與層之間的高度（毫米）	The thickness of the floor slabs (excluding plaster) of each residential property (mm) 每個住宅物業的樓板（不包括灰泥）的厚度（毫米）
Queen Tower 2	6/F 6樓	A	3045, 3145, 3345, 3495	150, 175
		B	3145, 3495	150, 175
		C	3045, 3145, 3345, 3495	150, 175
		D	3045, 3145, 3495	150

- The internal areas of the residential properties on the upper floors will generally be slightly larger than those on the lower floors because of the reducing thickness of the structural walls on the upper floors. (This does not apply to the residential properties in the Phase because the design of the Phase does not involve reducing thickness of structural walls of residential properties on the upper floors and hence internal areas of those residential properties will not be increased.)
- 因住宅物業的較高的樓層結構牆的厚度遞減，較高樓層的內部面積，一般比較低樓層的內部面積稍大。(不適用於期數內的住宅物業，因期數的設計是不牽涉較高樓層的住宅物業的結構牆的厚度遞減。因此，該等住宅物業的內部面積不會增加。)

Notes:

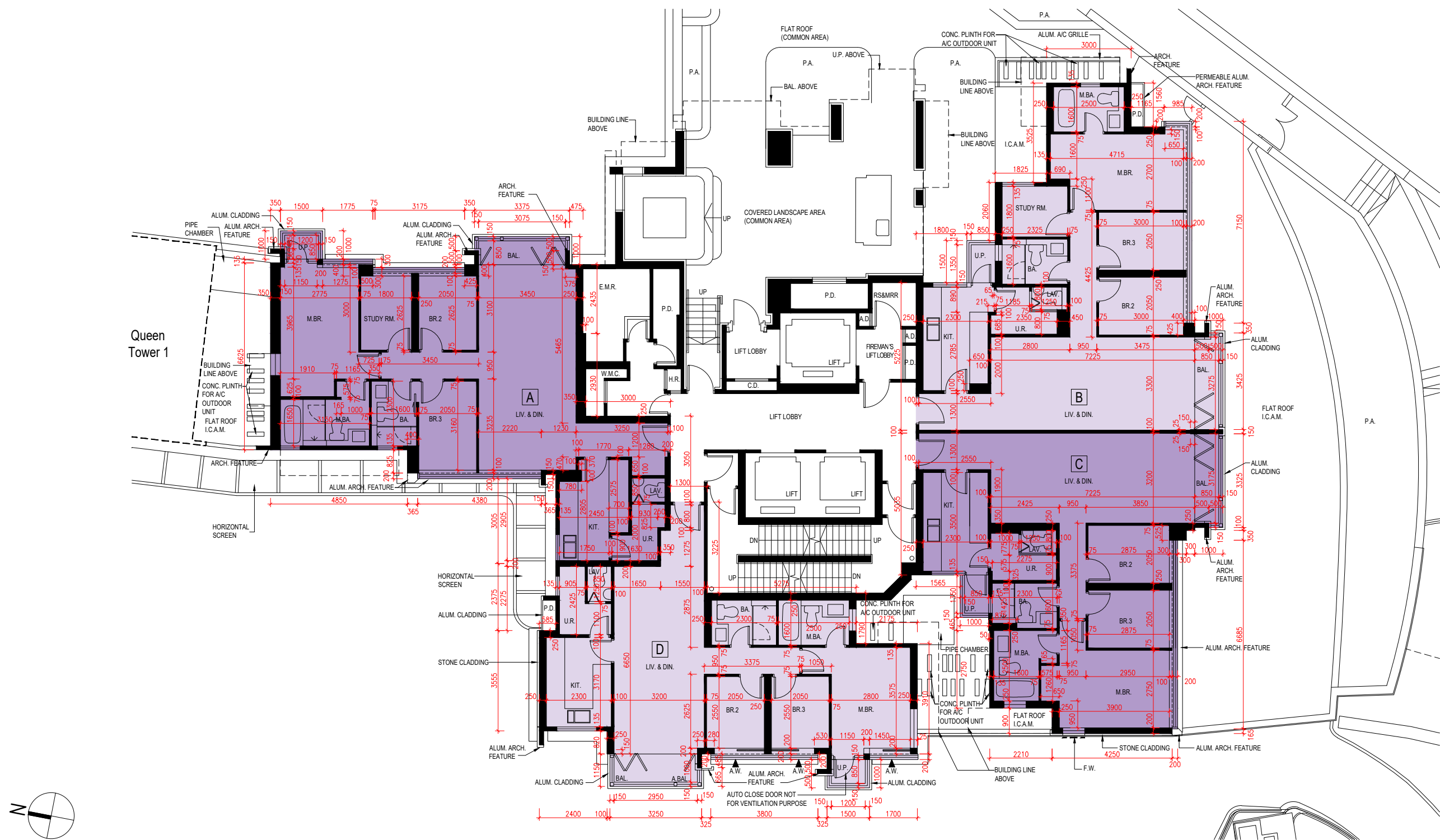
1. The dimensions of floor plans are all structural dimensions in millimetre.
2. Please refer to pages AL001-AL004 of this sales brochure for the legend of the terms and abbreviations used on the floor plans and notes that are applicable thereto.

備註：

1. 樓面平面圖所列之尺寸為以毫米標示之建築結構尺寸。
2. 有關樓面平面圖中所使用之名詞及簡稱之圖例及其適用的備註，請參閱本售樓說明書第AL001至AL004頁。

FLOOR PLANS OF RESIDENTIAL PROPERTIES IN THE PHASE  
期數的住宅物業的樓面平面圖

Queen Tower 2 6/F Floor Plan  
6樓樓面平面圖



Scale 比例:  
0M (米)      5M (米)      10M (米)

# FLOOR PLANS OF RESIDENTIAL PROPERTIES IN THE PHASE

## 期數的住宅物業的樓面平面圖

Block Name 大廈名稱	Floor 樓層	Flat 單位	The floor-to-floor height of each residential property (mm) 每個住宅物業的層與層之間的高度（毫米）	The thickness of the floor slabs (excluding plaster) of each residential property (mm) 每個住宅物業的樓板（不包括灰泥）的厚度（毫米）
Queen Tower 2	7/F - 12/F, 15/F - 23/F 7樓至12樓、 15樓至23樓	A	2925, 3025, 3225, 3375	150, 175
		B	3025, 3375	150
		C	3025, 3375	150, 175
		D	2925, 3025, 3225, 3375	150, 175
		E	2925, 3025, 3375	150
	25/F 25樓	A	3095, 3295, 3375, 3445	150, 175
		B	3095, 3295, 3375, 3405, 3445	150
		C	3095, 3375, 3405, 3415, 3445	150, 200, 240, 270
		D	2995, 3095, 3395, 3405, 3415, 3445	150, 240, 270
		E	3095, 3225, 3375, 3405, 3445	150

- The internal areas of the residential properties on the upper floors will generally be slightly larger than those on the lower floors because of the reducing thickness of the structural walls on the upper floors. (This does not apply to the residential properties in the Phase because the design of the Phase does not involve reducing thickness of structural walls of residential properties on the upper floors and hence internal areas of those residential properties will not be increased.)

- 因住宅物業的較高的樓層結構牆的厚度遞減，較高樓層的內部面積，一般比較低樓層的內部面積稍大。(不適用於期數內的住宅物業，因期數的設計是不牽涉較高樓層的住宅物業的結構牆的厚度遞減。因此，該等住宅物業的內部面積不會增加。)

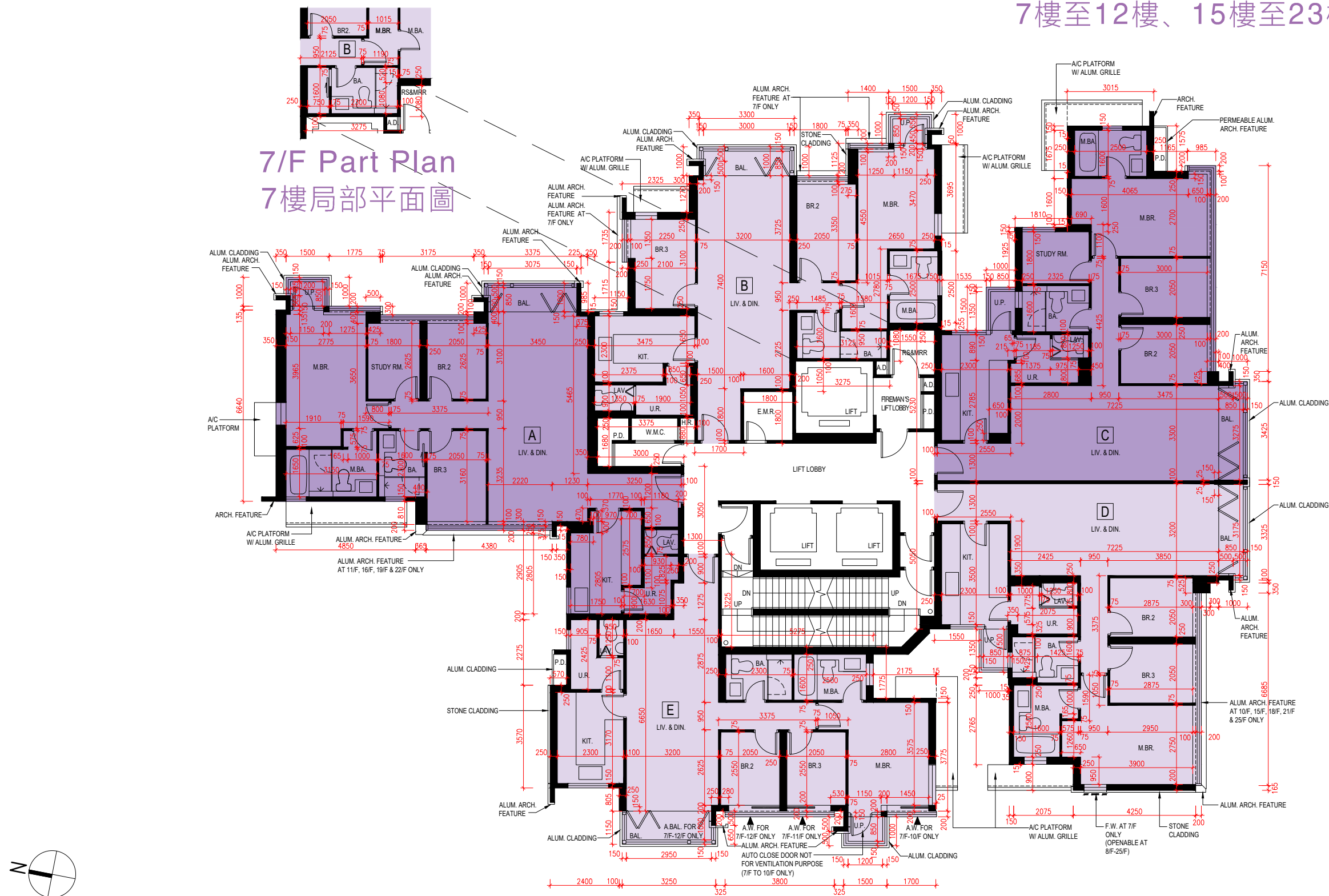
- Notes:
1. The dimensions of floor plans are all structural dimensions in millimetre.
  2. Please refer to pages AL001-AL004 of this sales brochure for the legend of the terms and abbreviations used on the floor plans and notes that are applicable thereto.

- 備註：
1. 樓面平面圖所列之尺寸為以毫米標示之建築結構尺寸。
  2. 有關樓面平面圖中所使用之名詞及簡稱之圖例及其適用的備註，請參閱本售樓說明書第AL001至AL004頁。



FLOOR PLANS OF RESIDENTIAL PROPERTIES IN THE PHASE  
期數的住宅物業的樓面平面圖

Queen Tower 2 7/F - 12/F, 15/F - 23/F & 25/F Floor Plan  
7樓至12樓、15樓至23樓及25樓樓面平面圖



# FLOOR PLANS OF RESIDENTIAL PROPERTIES IN THE PHASE

## 期數的住宅物業的樓面平面圖

Block Name 大廈名稱	Floor 樓層	Flat 單位	The floor-to-floor height of each residential property (mm) 每個住宅物業的層與層之間的高度（毫米）	The thickness of the floor slabs (excluding plaster) of each residential property (mm) 每個住宅物業的樓板（不包括灰泥）的厚度（毫米）
Queen Tower 2	26/F 26樓	Queen Mansion	2995, 3095, 3295, 3445	150, 200
		Villa B	2995, 3095, 3445	150, 200

- The internal areas of the residential properties on the upper floors will generally be slightly larger than those on the lower floors because of the reducing thickness of the structural walls on the upper floors. (This does not apply to the residential properties in the Phase because the design of the Phase does not involve reducing thickness of structural walls of residential properties on the upper floors and hence internal areas of those residential properties will not be increased.)

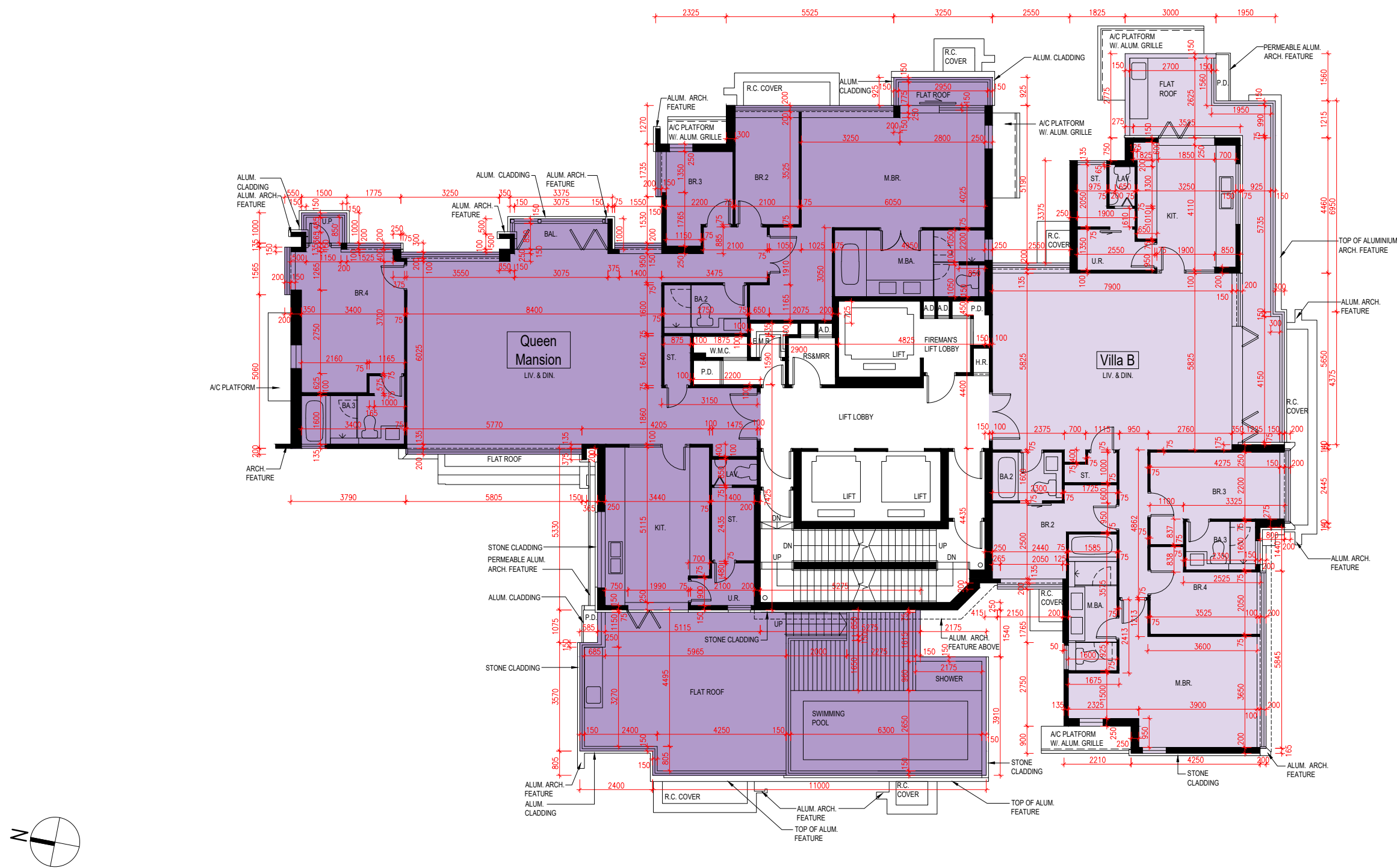
- 因住宅物業的較高的樓層結構牆的厚度遞減，較高樓層的內部面積，一般比較低樓層的內部面積稍大。(不適用於期數內的住宅物業，因期數的設計是不牽涉較高樓層的住宅物業的結構牆的厚度遞減。因此，該等住宅物業的內部面積不會增加。)

Notes:  
1. The dimensions of floor plans are all structural dimensions in millimetre.  
2. Please refer to pages AL001-AL004 of this sales brochure for the legend of the terms and abbreviations used on the floor plans and notes that are applicable thereto.

備註：  
1. 樓面平面圖所列之尺寸為以毫米標示之建築結構尺寸。  
2. 有關樓面平面圖中所使用之名詞及簡稱之圖例及其適用的備註，請參閱本售樓說明書第AL001至AL004頁。

FLOOR PLANS OF RESIDENTIAL PROPERTIES IN THE PHASE  
期數的住宅物業的樓面平面圖

Queen Tower 2 26/F Floor Plan  
26樓樓面平面圖



Scale 比例:

0M (米) 5M (米) 10M (米)



# FLOOR PLANS OF RESIDENTIAL PROPERTIES IN THE PHASE

## 期數的住宅物業的樓面平面圖

Block Name 大廈名稱	Floor 樓層	Flat 單位	The floor-to-floor height of each residential property (mm) 每個住宅物業的層與層之間的高度（毫米）	The thickness of the floor slabs (excluding plaster) of each residential property (mm) 每個住宅物業的樓板（不包括灰泥）的厚度（毫米）
Queen Tower 2	27/F 27樓	Penthouse A	3490, 3515, 3640	150, 200
		Penthouse B	3490, 3640	150, 175, 200

- The internal areas of the residential properties on the upper floors will generally be slightly larger than those on the lower floors because of the reducing thickness of the structural walls on the upper floors. (This does not apply to the residential properties in the Phase because the design of the Phase does not involve reducing thickness of structural walls of residential properties on the upper floors and hence internal areas of those residential properties will not be increased.)

- 因住宅物業的較高的樓層結構牆的厚度遞減，較高樓層的內部面積，一般比較低樓層的內部面積稍大。(不適用於期數內的住宅物業，因期數的設計是不牽涉較高樓層的住宅物業的結構牆的厚度遞減。因此，該等住宅物業的內部面積不會增加。)

Notes:

1. The dimensions of floor plans are all structural dimensions in millimetre.
2. Please refer to pages AL001-AL004 of this sales brochure for the legend of the terms and abbreviations used on the floor plans and notes that are applicable thereto.

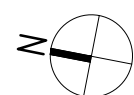
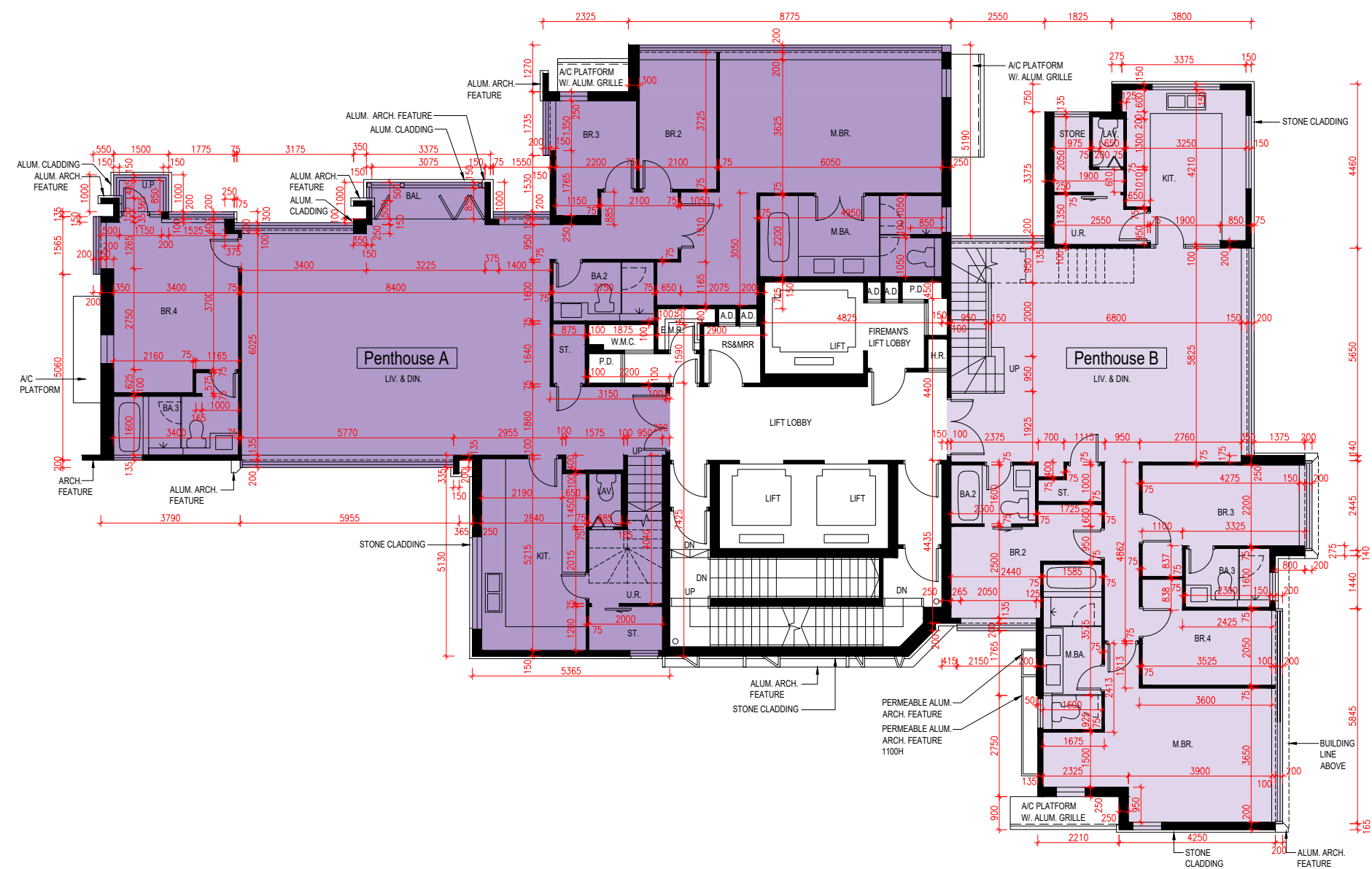
備註：

1. 樓面平面圖所列之尺寸為以毫米標示之建築結構尺寸。
2. 有關樓面平面圖中所使用之名詞及簡稱之圖例及其適用的備註，請參閱本售樓說明書第AL001至AL004頁。

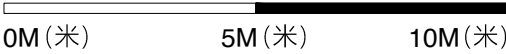
# FLOOR PLANS OF RESIDENTIAL PROPERTIES IN THE PHASE

## 期數的住宅物業的樓面平面圖

Queen Tower 2 27/F Floor Plan  
27樓樓面平面圖



Scale 比例:



# FLOOR PLANS OF RESIDENTIAL PROPERTIES IN THE PHASE

## 期數的住宅物業的樓面平面圖

Block Name 大廈名稱	Floor 樓層	Flat 單位	The floor-to-floor height of each residential property (mm) 每個住宅物業的層與層之間的高度（毫米）	The thickness of the floor slabs (excluding plaster) of each residential property (mm) 每個住宅物業的樓板（不包括灰泥）的厚度（毫米）
Queen Tower 2	Roof 天台	Penthouse A	Not Applicable 不適用	Not Applicable 不適用
		Penthouse B	Not Applicable 不適用	Not Applicable 不適用

- The internal areas of the residential properties on the upper floors will generally be slightly larger than those on the lower floors because of the reducing thickness of the structural walls on the upper floors. (This does not apply to the residential properties in the Phase because the design of the Phase does not involve reducing thickness of structural walls of residential properties on the upper floors and hence internal areas of those residential properties will not be increased.)

- 因住宅物業的較高的樓層結構牆的厚度遞減，較高樓層的內部面積，一般比較低樓層的內部面積稍大。(不適用於期數內的住宅物業，因期數的設計是不牽涉較高樓層的住宅物業的結構牆的厚度遞減。因此，該等住宅物業的內部面積不會增加。)

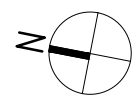
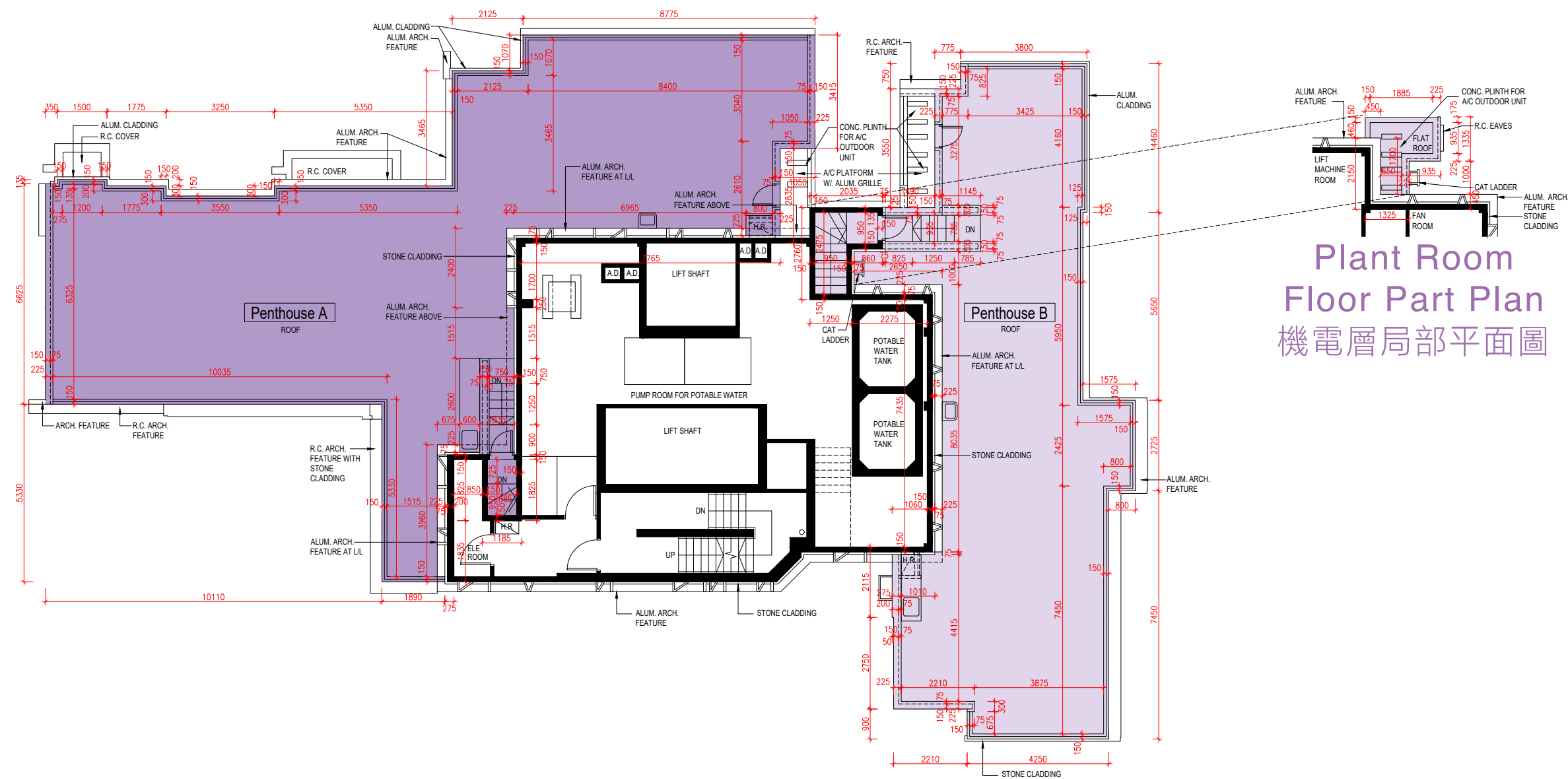
Notes:  
1. The dimensions of floor plans are all structural dimensions in millimetre.  
2. Please refer to pages AL001-AL004 of this sales brochure for the legend of the terms and abbreviations used on the floor plans and notes that are applicable thereto.

備註：  
1. 樓面平面圖所列之尺寸為以毫米標示之建築結構尺寸。  
2. 有關樓面平面圖中所使用之名詞及簡稱之圖例及其適用的備註，請參閱本售樓說明書第AL001至AL004頁。



FLOOR PLANS OF RESIDENTIAL PROPERTIES IN THE PHASE  
期數的住宅物業的樓面平面圖

Queen Tower 2 Roof Floor Plan  
天台樓面平面圖



Scale 比例:  
0M (米)      5M (米)      10M (米)