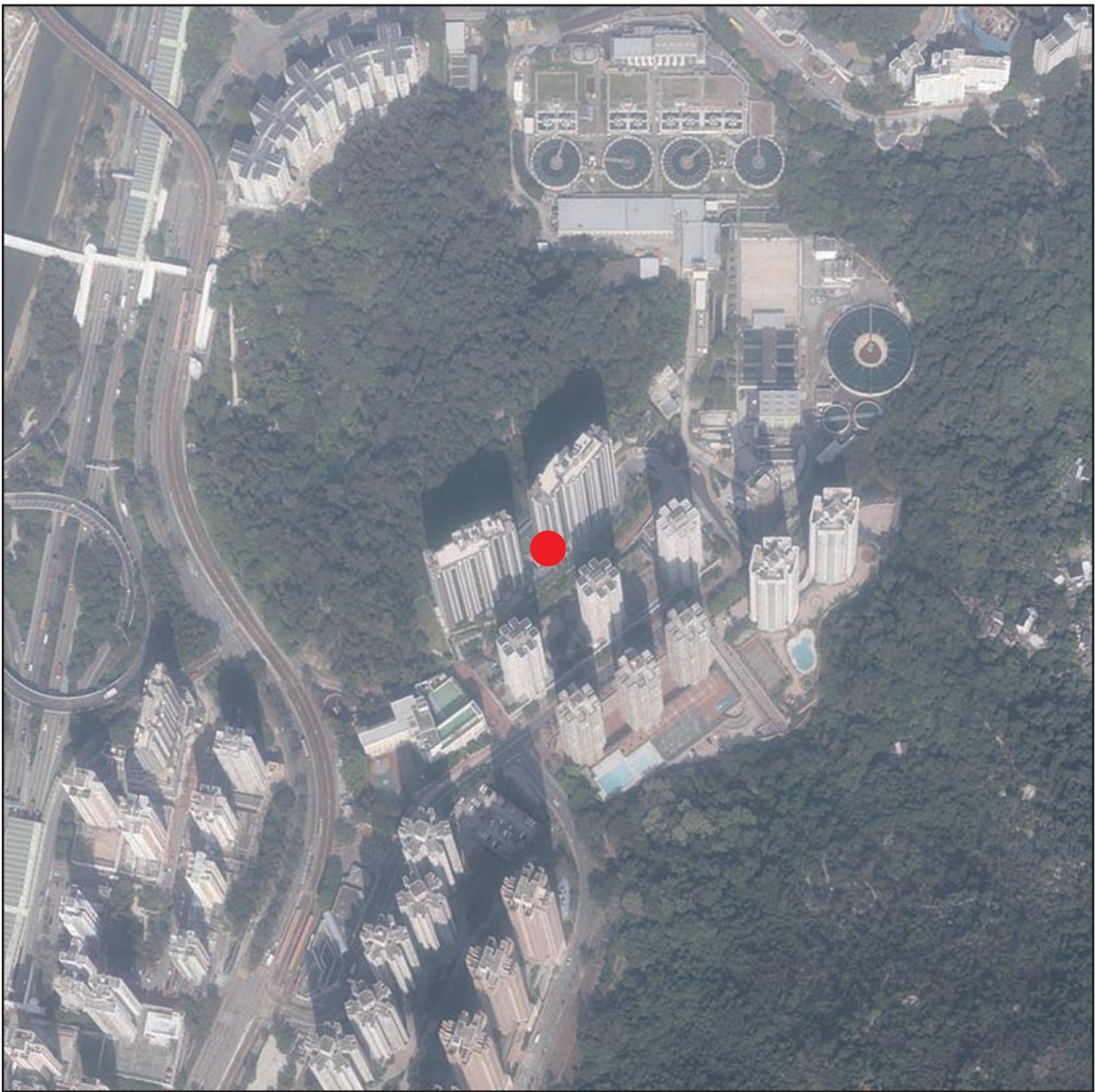


AERIAL PHOTOGRAPH OF THE PHASE 期數的鳥瞰照片

Adopted from part of the aerial photograph taken by the Survey and Mapping Office of the Lands Department at a flying height of 6,900 feet, photo No. E213163C, date of flight: 28 November 2023.
摘錄自地政總署測繪處在6,900呎的飛行高度拍攝之鳥瞰照片，照片編號為E213163C，飛行日期：2023年11月28日。



● Location of the Phase
期數的位置

Notes:

- 1. Copy of the aerial photograph(s) of the Phase is available for free inspection at the sales office during opening hours.
- 2. The aerial photograph(s) may show more than the area required under the Residential Properties (First-hand Sales) Ordinance due to the technical reason that the boundary of the Phase is irregular.

備註：

- 1. 期數的鳥瞰照片之副本可於售樓處開放時間內免費查閱。
- 2. 由於期數的邊界不規則的技術原因，此照片所顯示的範圍可能超過《一手住宅物業銷售條例》所規定的範圍。

Survey and Mapping Office, Lands Department, The Government of HKSAR
© Copyright reserved – reproduction by permission only.
香港特別行政區政府地政總署測繪處 版權所有，未經許可，不得翻印。