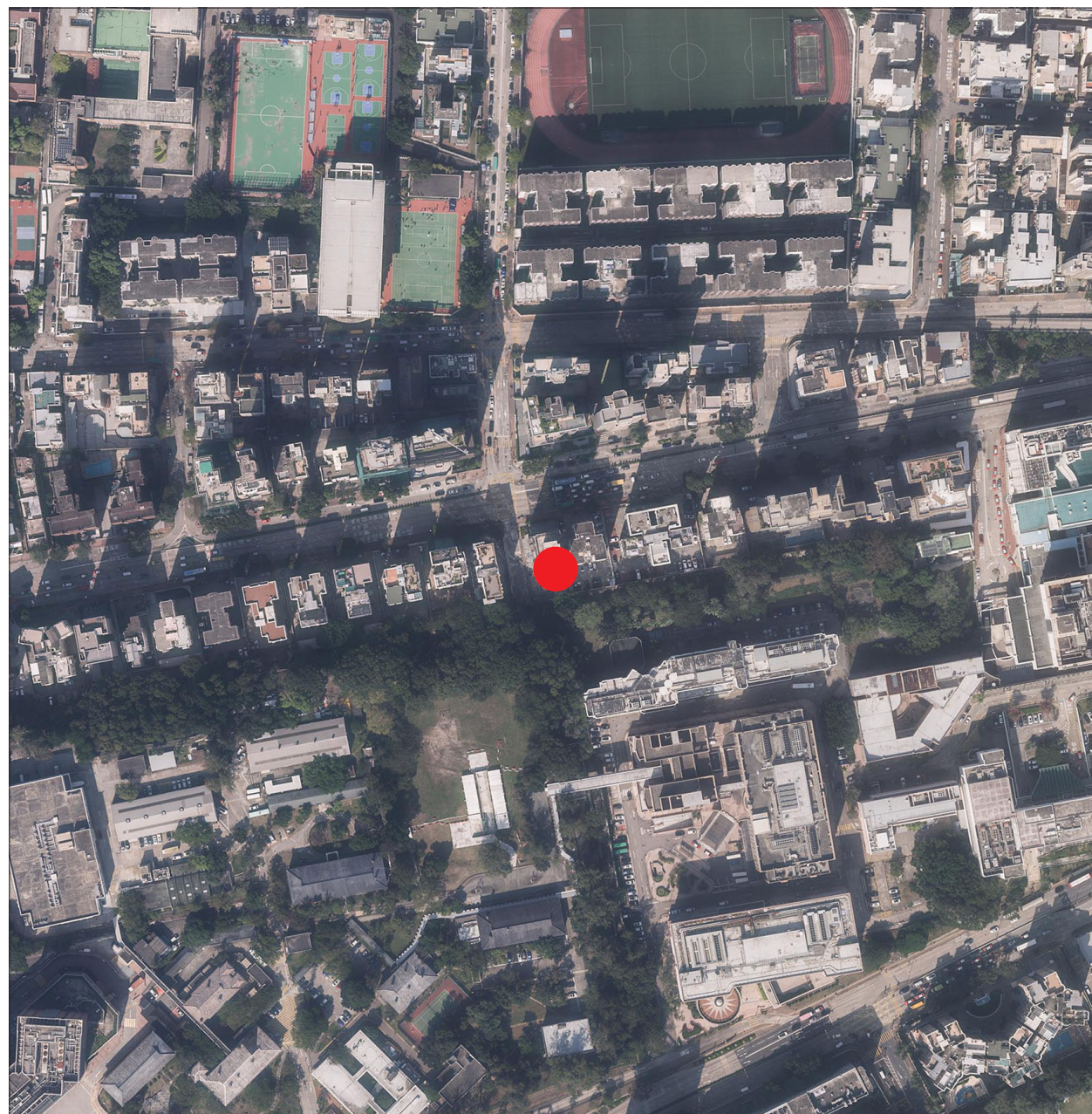



AERIAL PHOTOGRAPH OF THE DEVELOPMENT 發展項目的鳥瞰照片



Survey and Mapping Office, Lands Department, The Government of the HKSAR © Copyright reserved - reproduction by permission only.

香港特別行政區政府地政總署測繪處©版權所有，未經許可，不得翻印。

 Location of the Development
發展項目位置

Adopted from part of the aerial photo taken by Survey and Mapping Office of Lands Department at a flying height 6,900 feet. Photo No. E167204C, dated 8th December 2022.

摘錄自地政總署測繪處於2022年12月8日在6,900呎飛行高度拍攝之鳥瞰照片，編號為E167204C。

- Notes :
1. Due to the technical reasons that the boundary of the Development is irregular, this aerial photograph may show more than the area required under the Residential Properties (First-hand sales) Ordinance.
 2. Copy of the Aerial Photograph of the Development is available for free inspection at the sales office during opening hours.

- 備註：
1. 因技術性問題，此鳥瞰照片所顯示的範圍可能超過條例的規定。
 2. 發展項目的鳥瞰照片之副本可於售樓處開放時間內免費查閱。


AERIAL PHOTOGRAPH OF THE DEVELOPMENT

發展項目的鳥瞰照片



This blank area falls outside the coverage of the aerial photograph
鳥瞰照片並不覆蓋此空白範圍

Survey and Mapping Office, Lands Department, The Government of the HKSAR © Copyright reserved - reproduction by permission only.
香港特別行政區政府地政總署測繪處©版權所有，未經許可，不得翻印。

 Location of the Development
發展項目位置

Adopted from part of the aerial photo taken by Survey and Mapping Office of Lands Department at a flying height 6,900 feet. Photo No. E197290C, dated 2nd March 2023.
摘錄自地政總署測繪處於2023年3月2日在6,900呎飛行高度拍攝之鳥瞰照片，編號為E197290C。

- Notes :
1. Due to the technical reasons that the boundary of the Development is irregular, this aerial photograph may show more than the area required under the Residential Properties (First-hand sales) Ordinance.
 2. Copy of the Aerial Photograph of the Development is available for free inspection at the sales office during opening hours.

備註：

1. 因技術性問題，此鳥瞰照片所顯示的範圍可能超過條例的規定。
2. 發展項目的鳥瞰照片之副本可於售樓處開放時間內免費查閱。

AERIAL PHOTOGRAPH OF THE DEVELOPMENT 發展項目的鳥瞰照片



Survey and Mapping Office, Lands Department, The Government of the HKSAR © Copyright reserved - reproduction by permission only.
香港特別行政區政府地政總署測繪處©版權所有，未經許可，不得翻印。

● Location of the Development
發展項目位置

Adopted from part of the aerial photo taken by Survey and Mapping Office of Lands Department at a flying height 6,900 feet. Photo No. E197291C, dated 2nd March 2023.
摘錄自地政總署測繪處於2023年3月2日在6,900呎飛行高度拍攝之鳥瞰照片，編號為E197291C。

Notes : 1. Due to the technical reasons that the boundary of the Development is irregular, this aerial photograph may show more than the area required under the Residential Properties (First-hand sales) Ordinance.
2. Copy of the Aerial Photograph of the Development is available for free inspection at the sales office during opening hours.

備註： 1. 因技術性問題，此鳥瞰照片所顯示的範圍可能超過條例的規定。
2. 發展項目的鳥瞰照片之副本可於售樓處開放時間內免費查閱。