

20 ELEVATION PLAN 立面圖

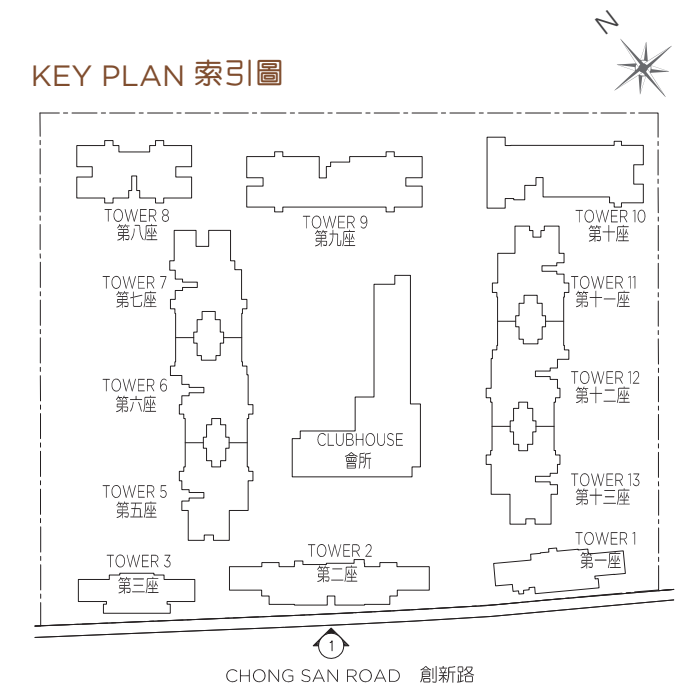
ELEVATION 1 立面圖 1

The Authorized Person for the Development certified that the elevations shown on these plans:

- (a) are prepared on the basis of the approved building plans for the Development as of 25th March 2020; and
- (b) are in general accordance with the outward appearance of the Development.

發展項目的認可人士已證明本圖所顯示的立面：

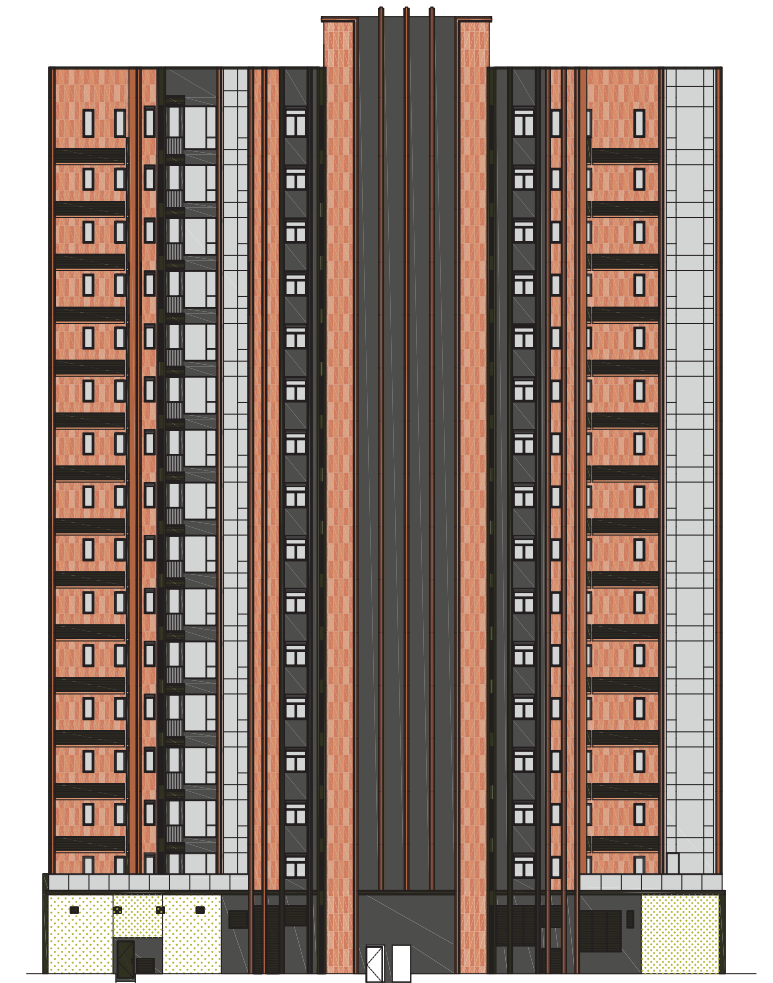
- (a) 以 2020 年 3 月 25 日的情況為準的發展項目的經批准的建築圖則為基礎擬備；及
- (b) 大致上與發展項目的外觀一致。



TOWER 3 第3座

TOWER 2 第2座

TOWER 1 第1座

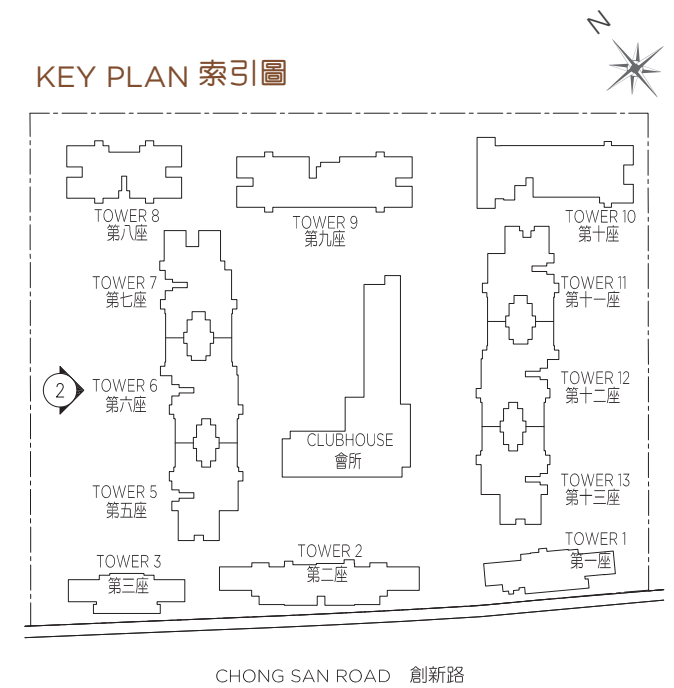


20 ELEVATION PLAN 立面圖

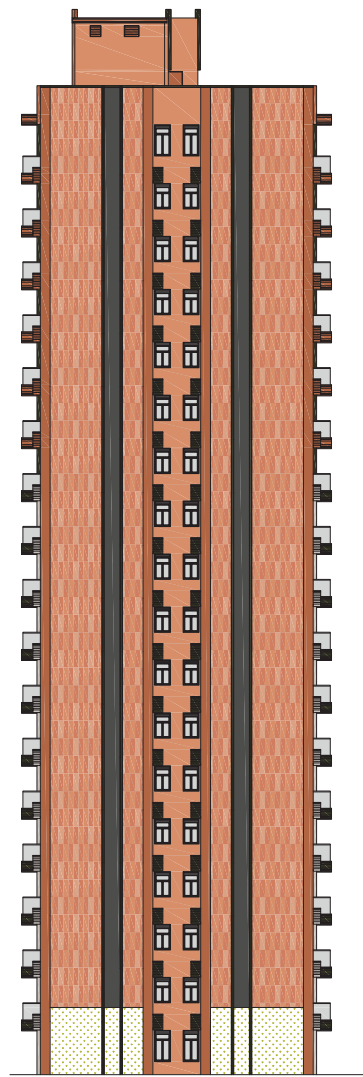
ELEVATION 2 立面圖 2

The Authorized Person for the Development certified that the elevations shown on these plans:
(a) are prepared on the basis of the approved building plans for the Development as of 25th March 2020; and
(b) are in general accordance with the outward appearance of the Development.

發展項目的認可人士已證明本圖所顯示的立面：
(a) 以 2020 年 3 月 25 日的情況為準的發展項目的經批准的建築圖則為基礎擬備；及
(b) 大致上與發展項目的外觀一致。



TOWER 8 第8座



TOWER 7 第7座



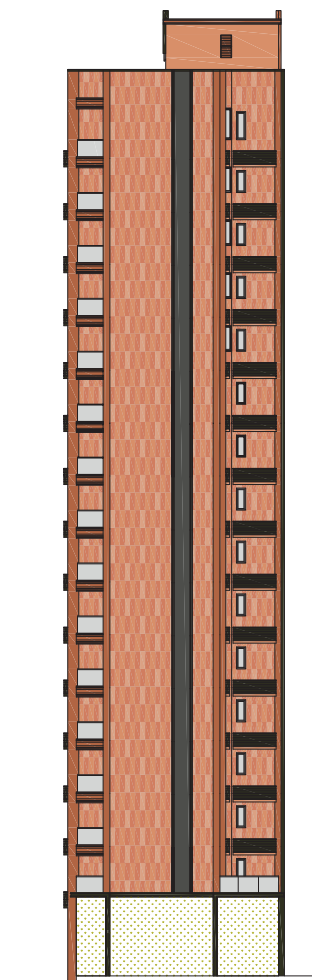
TOWER 6 第6座



TOWER 5 第5座



TOWER 3 第3座

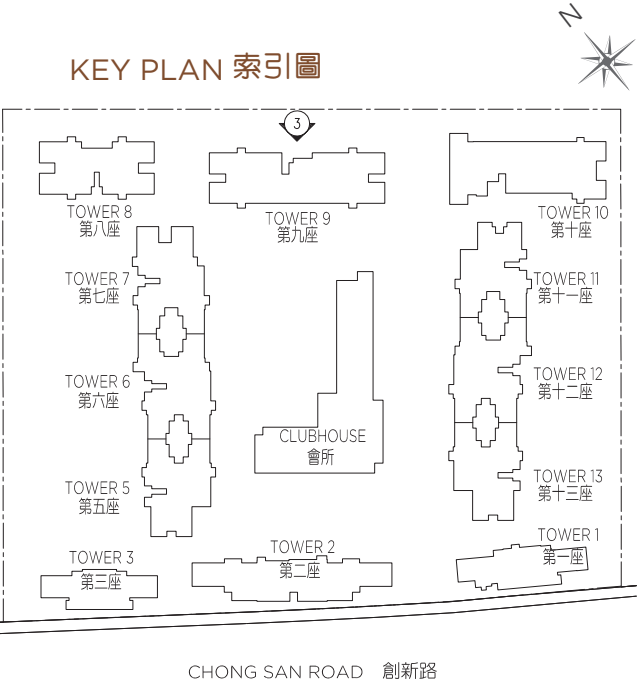


20 ELEVATION PLAN 立面圖

ELEVATION 3 立面圖 3

The Authorized Person for the Development certified that the elevations shown on these plans:
(a) are prepared on the basis of the approved building plans for the Development as of 25th March 2020; and
(b) are in general accordance with the outward appearance of the Development.

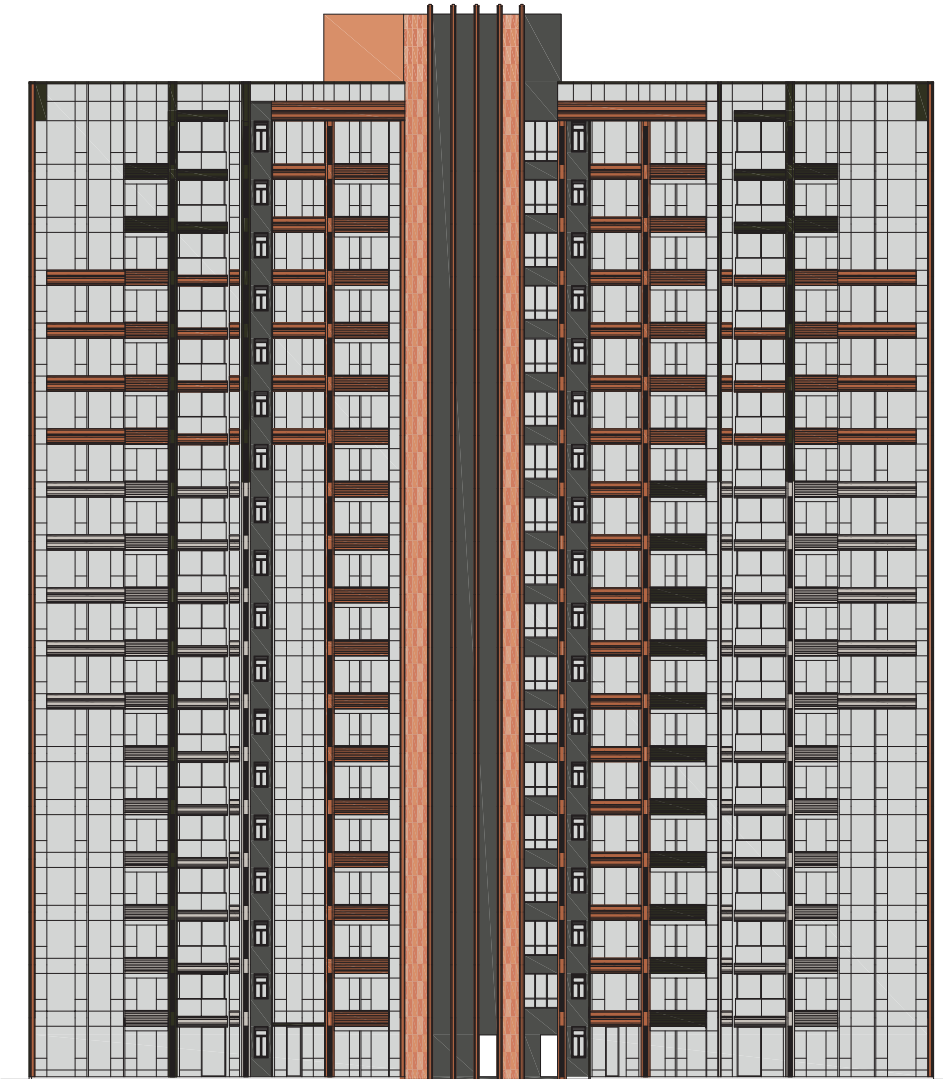
發展項目的認可人士已證明本圖所顯示的立面：
(a) 以 2020 年 3 月 25 日的情況為準的發展項目的經批准的建築圖則為基礎擬備；及
(b) 大致上與發展項目的外觀一致。



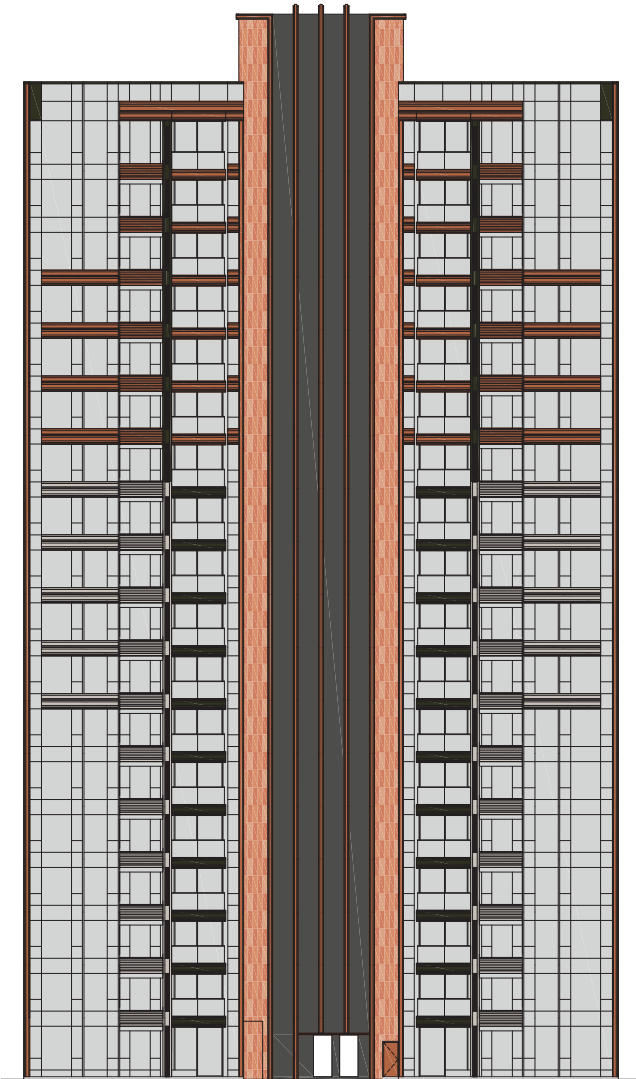
TOWER 10 第10座



TOWER 9 第9座



TOWER 8 第8座

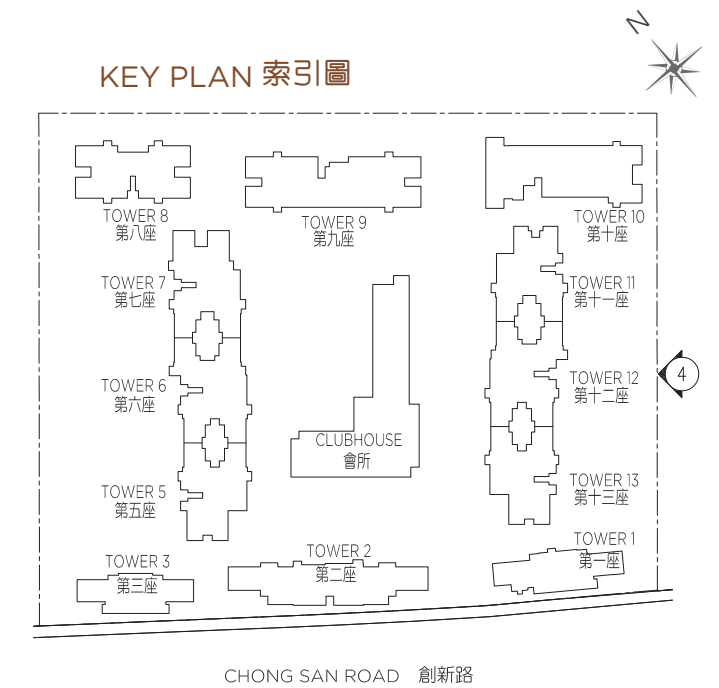


20 ELEVATION PLAN 立面圖

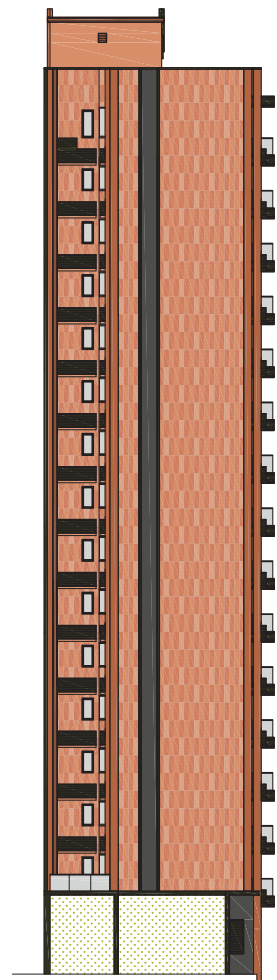
ELEVATION 4 立面圖 4

The Authorized Person for the Development certified that the elevations shown on these plans:
(a) are prepared on the basis of the approved building plans for the Development as of 25th March 2020; and
(b) are in general accordance with the outward appearance of the Development.

發展項目的認可人士已證明本圖所顯示的立面：
(a) 以 2020 年 3 月 25 日的情況為準的發展項目的經批准的建築圖則為基礎擬備；及
(b) 大致上與發展項目的外觀一致。



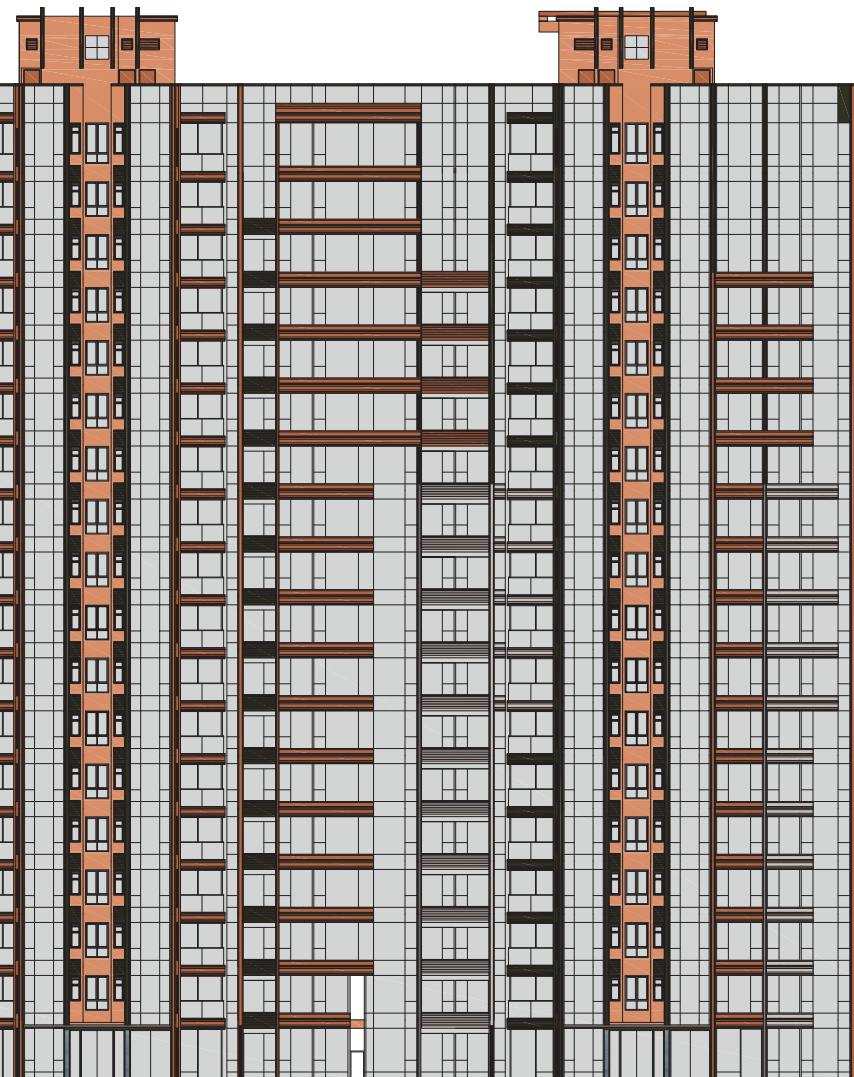
TOWER 1 第1座



TOWER 13 第13座



TOWER 12 第12座



TOWER 11 第11座



TOWER 10 第10座

