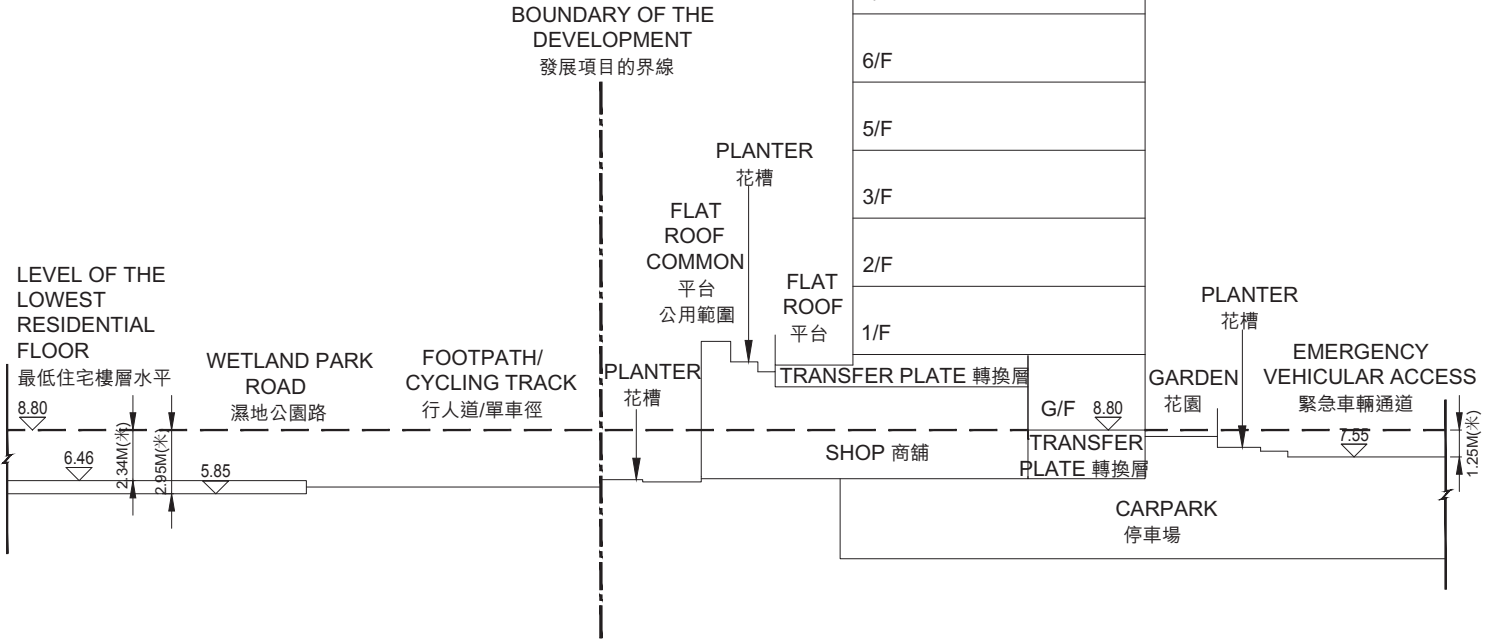




CROSS-SECTION PLAN OF BUILDING IN THE PHASE

期數的建築物的橫截面圖

TOP ROOF	上層天台
ROOF	天台
10/F	RESIDENTIAL UNITS 10樓住宅單位
9/F	RESIDENTIAL UNITS 9樓住宅單位
8/F	RESIDENTIAL UNITS 8樓住宅單位
7/F	RESIDENTIAL UNITS 7樓住宅單位
6/F	RESIDENTIAL UNITS 6樓住宅單位
5/F	RESIDENTIAL UNITS 5樓住宅單位
3/F	RESIDENTIAL UNITS 3樓住宅單位
2/F	RESIDENTIAL UNITS 2樓住宅單位
1/F	RESIDENTIAL UNITS 1樓住宅單位
	TRANSFER PLATE 轉換層
G/F	RESIDENTIAL UNITS 地下住宅單位
B/F	地庫



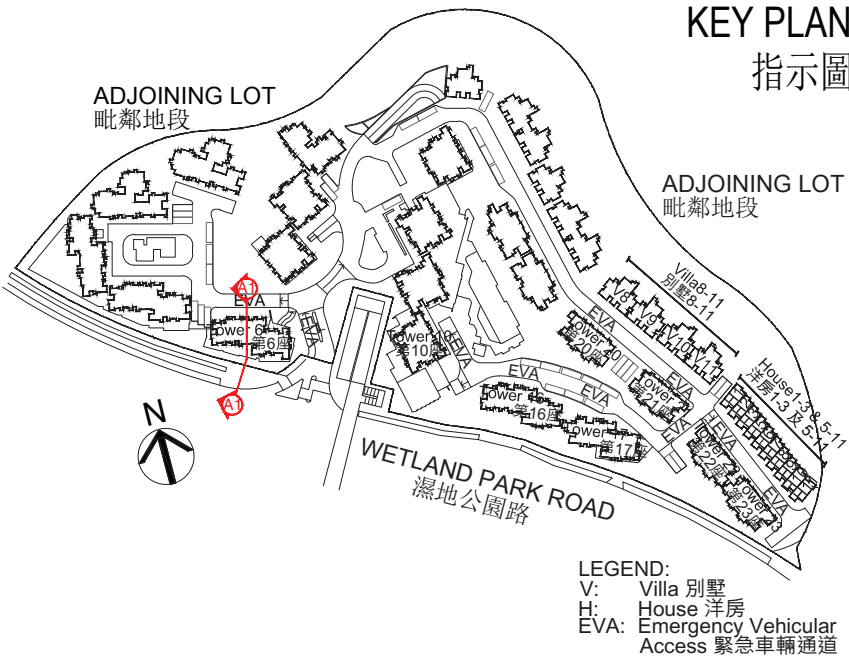
CROSS-SECTION PLAN A1
橫截面圖A1

NOTES:

- ▽ Denotes height (in metres) above the Hong Kong Principal Datum.
- Dotted line denotes the level of the lowest residential floor of the building in the Phase.
- The part of Wetland Park Road adjacent to the building is 5.85 metres to 6.46 metres above the Hong Kong Principal Datum.
- The part of Emergency Vehicular Access adjacent to the building is 7.55 metres above the Hong Kong Principal Datum.

備註:

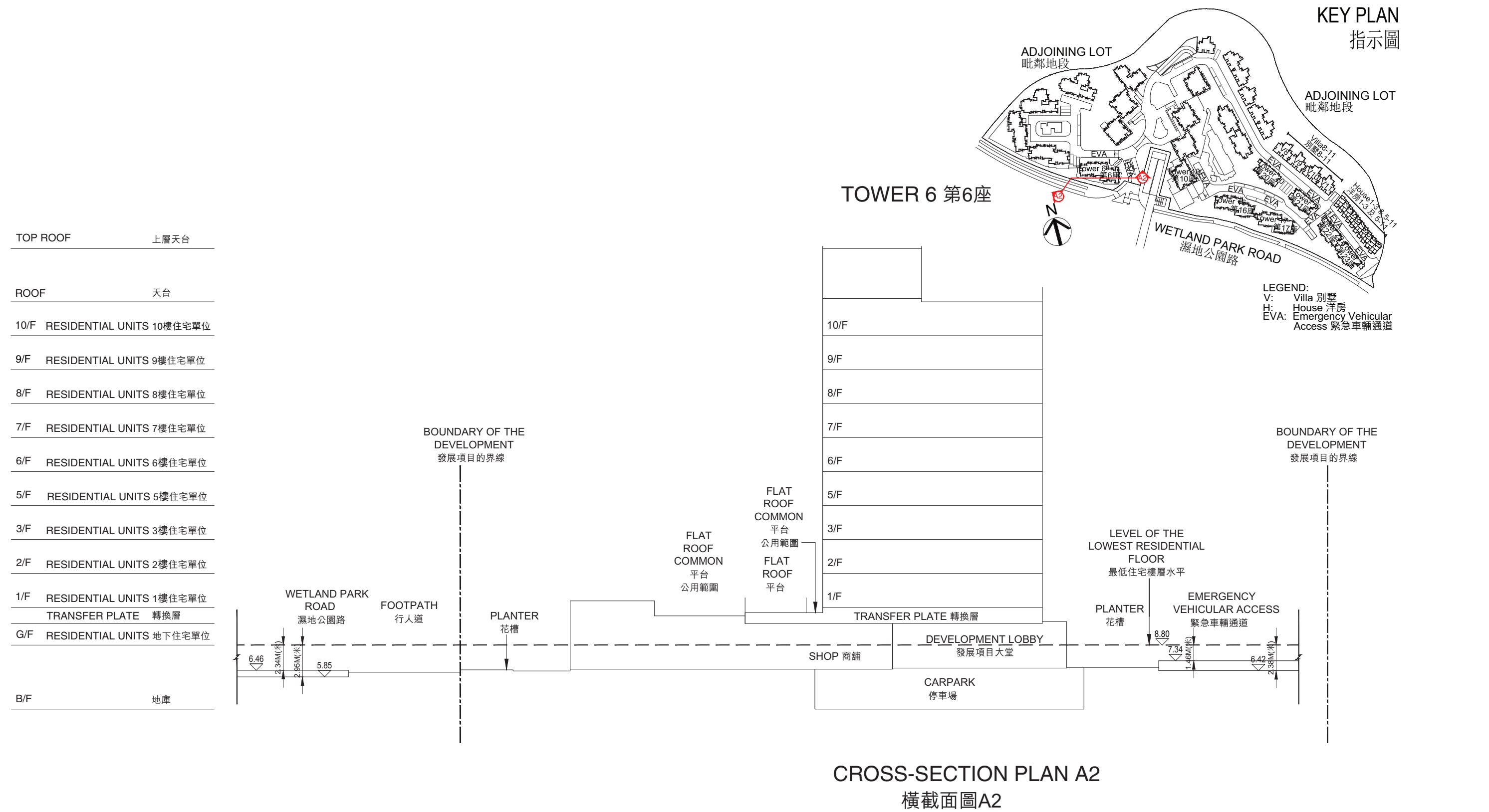
- ▽代表香港主水平基準以上的高度(米)。
- 虛線代表期數中建築物之最低住宅樓層水平。
- 毗連建築物的一段濕地公園路為香港主水平基準以上5.85米至6.46米。
- 毗連建築物的一段緊急車輛通道為香港主水平基準以上7.55米。





CROSS-SECTION PLAN OF BUILDING IN THE PHASE

期數的建築物的橫截面圖



NOTES:

- ▽ Denotes height (in metres) above the Hong Kong Principal Datum.
- Dotted line denotes the level of the lowest residential floor of the building in the Phase.
- The part of Emergency Vehicular Access adjacent to the building is 6.42 metres to 7.34 metres above the Hong Kong Principal Datum.
- The part of Wetland Park Road adjacent to the building is 5.85 metres to 6.46 metres above the Hong Kong Principal Datum.

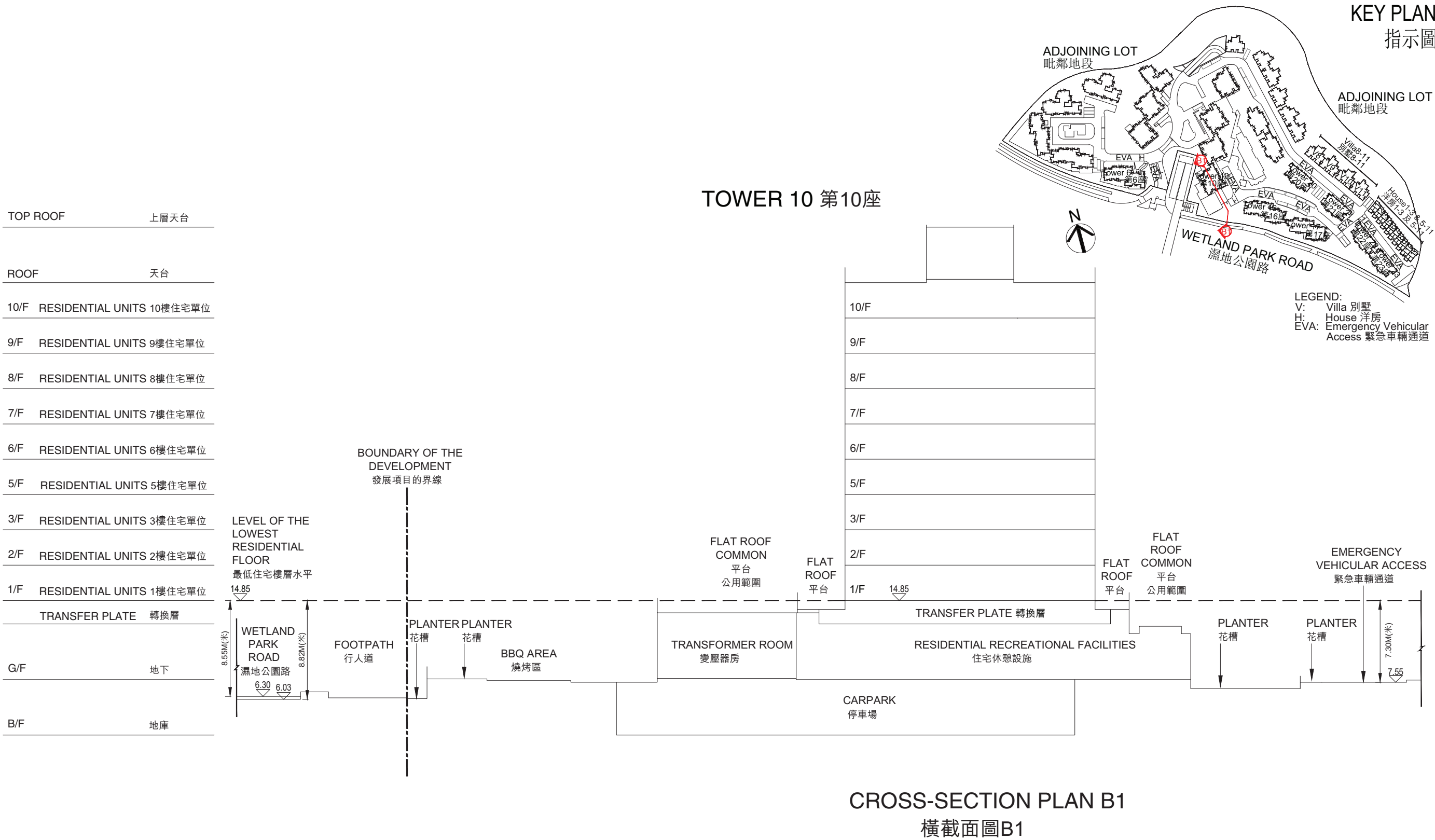
備註:

- ▽ 代表香港主水平基準以上的高度(米)。
- 虛線代表期數中建築物之最低住宅樓層水平。
- 毗連建築物的一段緊急車輛通道為香港主水平基準以上6.42米至7.34米。
- 毗連建築物的一段濕地公園路為香港主水平基準以上5.85米至6.46米。



CROSS-SECTION PLAN OF BUILDING IN THE PHASE

期數的建築物的橫截面圖



NOTES:

1. ▽ Denotes height (in metres) above the Hong Kong Principal Datum.
2. --- Dotted line denotes the level of the lowest residential floor of the building in the Phase.
3. The part of Wetland Park Road adjacent to the building is 6.03 metres to 6.30 metres above the Hong Kong Principal Datum.
4. The part of Emergency Vehicular Access adjacent to the building is 7.55 metres above the Hong Kong Principal Datum.

備註:

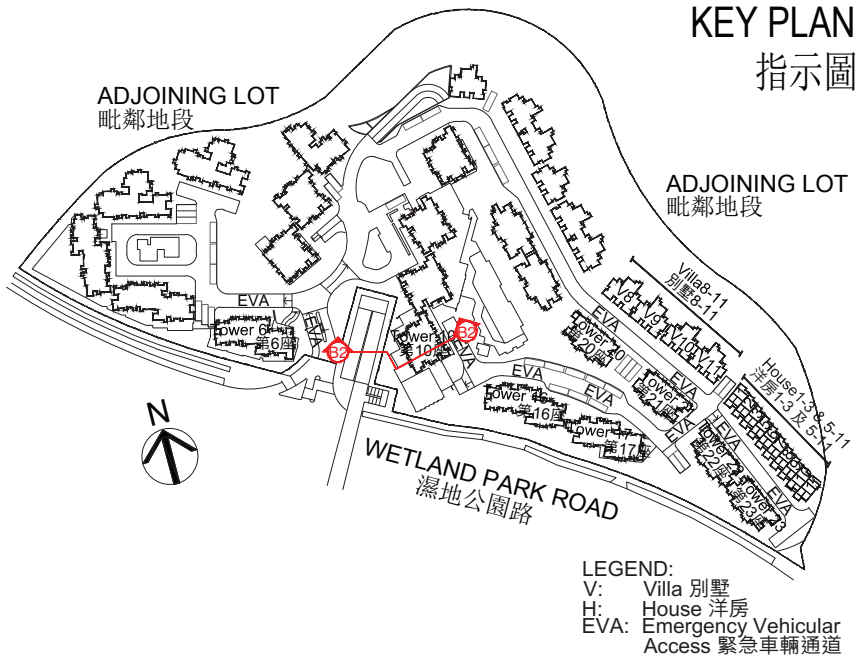
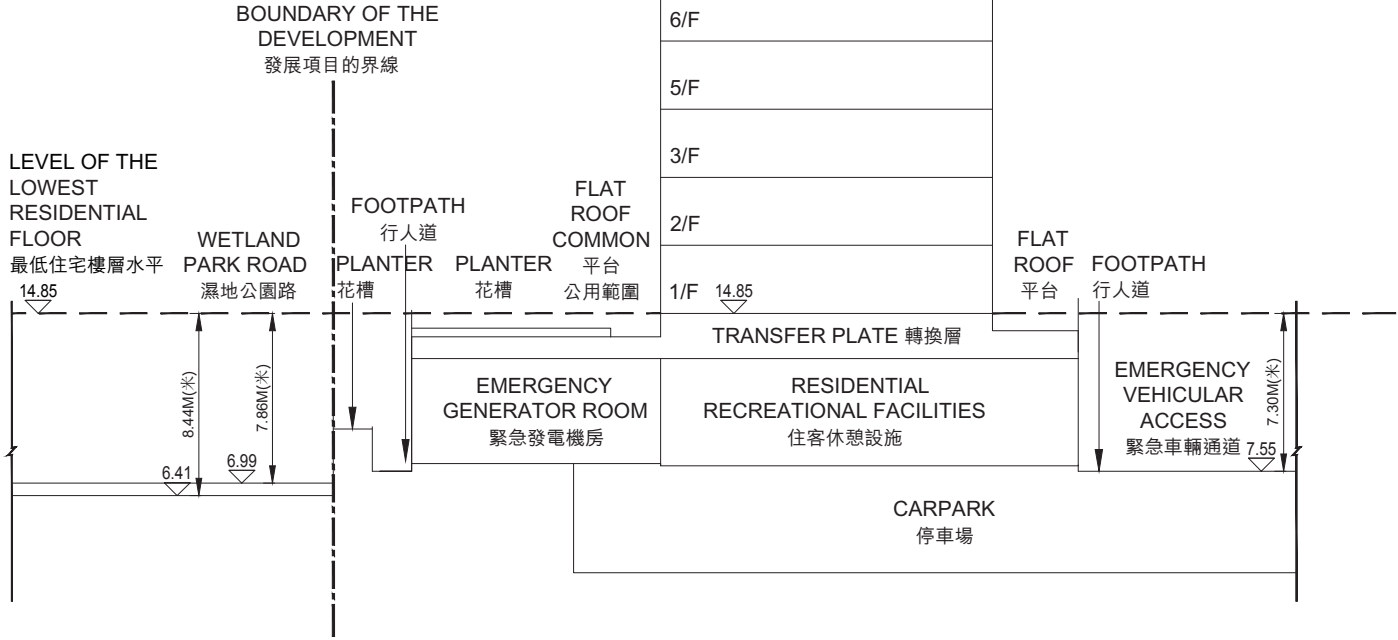
1. ▽ 代表香港主水平基準以上的高度(米)。
2. --- 虛線代表期數中建築物之最低住宅樓層水平。
3. 毗連建築物的一段濕地公園路為香港主水平基準以上6.03米至6.30米。
4. 毗連建築物的一段緊急車輛通道為香港主水平基準以上7.55米。



CROSS-SECTION PLAN OF BUILDING IN THE PHASE

期數的建築物的橫截面圖

TOP ROOF	上層天台
ROOF	天台
10/F	RESIDENTIAL UNITS 10樓住宅單位
9/F	RESIDENTIAL UNITS 9樓住宅單位
8/F	RESIDENTIAL UNITS 8樓住宅單位
7/F	RESIDENTIAL UNITS 7樓住宅單位
6/F	RESIDENTIAL UNITS 6樓住宅單位
5/F	RESIDENTIAL UNITS 5樓住宅單位
3/F	RESIDENTIAL UNITS 3樓住宅單位
2/F	RESIDENTIAL UNITS 2樓住宅單位
1/F	RESIDENTIAL UNITS 1樓住宅單位
TRANSFER PLATE 轉換層	
G/F	RESIDENTIAL UNITS 地下住宅單位
B/F	地庫



CROSS-SECTION PLAN B2
橫截面圖B2

- NOTES:
- ▽ Denotes height (in metres) above the Hong Kong Principal Datum.
 - Dotted line denotes the level of the lowest residential floor of the building in the Phase.
 - The part of Wetland Park Road adjacent to the building is 6.41 metres to 6.99 metres above the Hong Kong Principal Datum.
 - The part of Emergency Vehicular Access adjacent to the building is 7.55 metres above the Hong Kong Principal Datum.

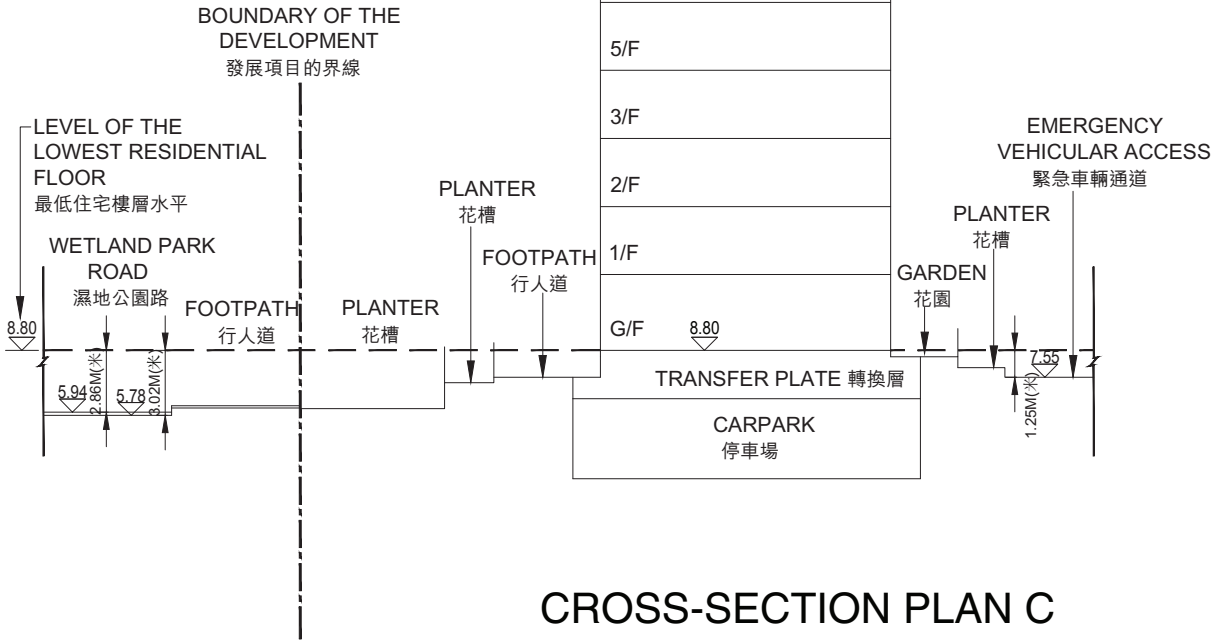
- 備註:
- ▽ 代表香港主水平基準以上的高度(米)。
 - 虛線代表期數中建築物之最低住宅樓層水平。
 - 毗連建築物的一段濕地公園路為香港主水平基準以上6.41米至6.99米。
 - 毗連建築物的一段緊急車輛通道為香港主水平基準以上7.55米。



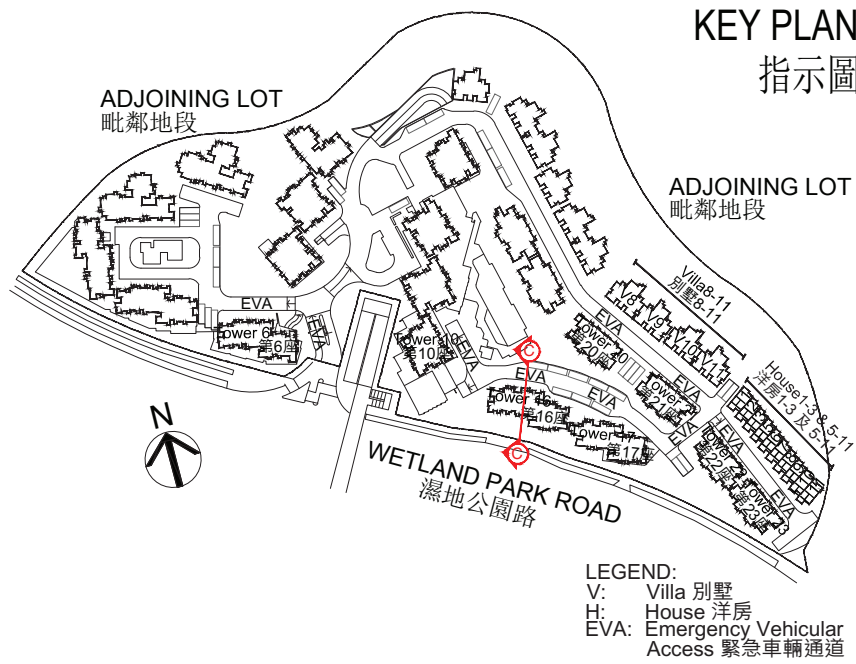
CROSS-SECTION PLAN OF BUILDING IN THE PHASE

期數的建築物的橫截面圖

TOP ROOF	上層天台
ROOF	天台
10/F	RESIDENTIAL UNITS 10樓住宅單位
9/F	RESIDENTIAL UNITS 9樓住宅單位
8/F	RESIDENTIAL UNITS 8樓住宅單位
7/F	RESIDENTIAL UNITS 7樓住宅單位
6/F	RESIDENTIAL UNITS 6樓住宅單位
5/F	RESIDENTIAL UNITS 5樓住宅單位
3/F	RESIDENTIAL UNITS 3樓住宅單位
2/F	RESIDENTIAL UNITS 2樓住宅單位
1/F	RESIDENTIAL UNITS 1樓住宅單位
G/F	RESIDENTIAL UNITS 地下住宅單位
TRANSFER PLATE	轉換層
B/F	地庫



CROSS-SECTION PLAN C
橫截面圖C



NOTES:

- ▽ Denotes height (in metres) above the Hong Kong Principal Datum.
- Dotted line denotes the level of the lowest residential floor of the building in the Phase.
- The part of Wetland Park Road adjacent to the building is 5.78 metres to 5.94 metres above the Hong Kong Principal Datum.
- The part of Emergency Vehicular Access adjacent to the building is 7.55 metres above the Hong Kong Principal Datum.

備註:

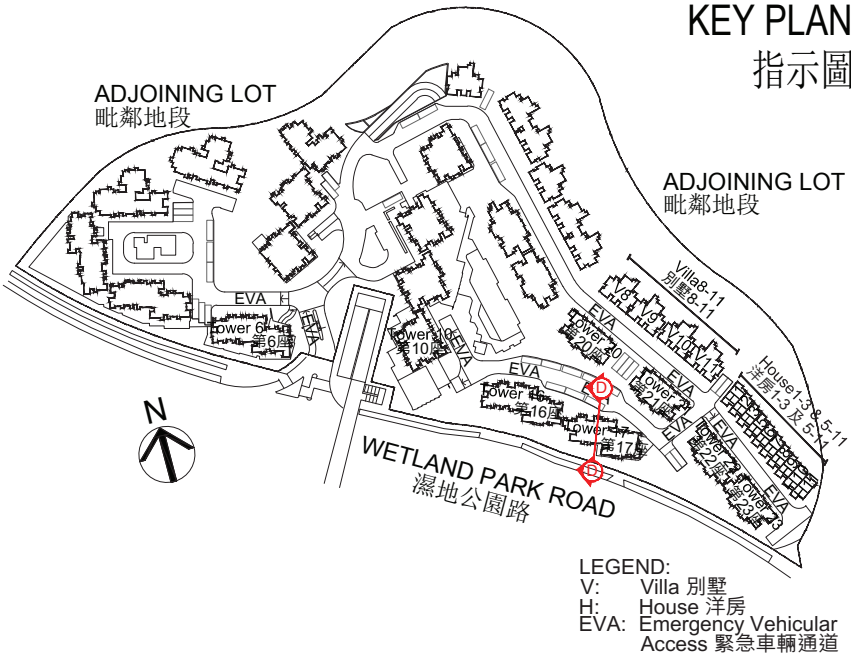
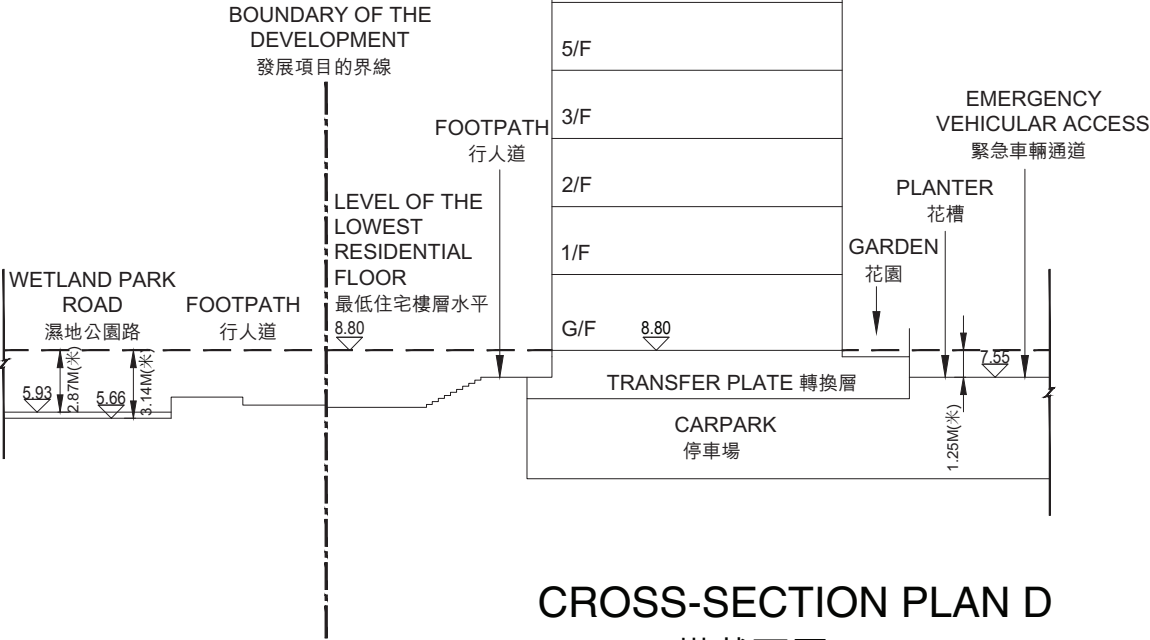
- ▽ 代表香港主水平基準以上的高度(米)。
- 虛線代表期數中建築物之最低住宅樓層水平。
- 毗連建築物的一段濕地公園路為香港主水平基準以上5.78米至5.94米。
- 毗連建築物的一段緊急車輛通道為香港主水平基準以上7.55米。



CROSS-SECTION PLAN OF BUILDING IN THE PHASE

期數的建築物的橫截面圖

TOP ROOF	上層天台
ROOF	天台
10/F	RESIDENTIAL UNITS 10樓住宅單位
9/F	RESIDENTIAL UNITS 9樓住宅單位
8/F	RESIDENTIAL UNITS 8樓住宅單位
7/F	RESIDENTIAL UNITS 7樓住宅單位
6/F	RESIDENTIAL UNITS 6樓住宅單位
5/F	RESIDENTIAL UNITS 5樓住宅單位
3/F	RESIDENTIAL UNITS 3樓住宅單位
2/F	RESIDENTIAL UNITS 2樓住宅單位
1/F	RESIDENTIAL UNITS 1樓住宅單位
G/F	RESIDENTIAL UNITS 地下住宅單位
TRANSFER PLATE	轉換層
B/F	地庫

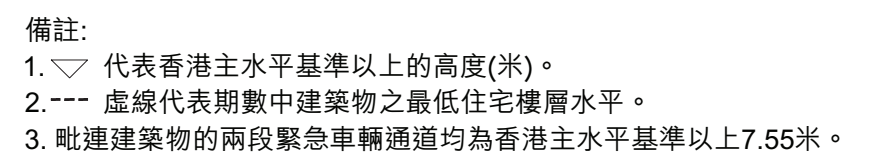


- NOTES:
- ▽ Denotes height (in metres) above the Hong Kong Principal Datum.
 - Dotted line denotes the level of the lowest residential floor of the building in the Phase.
 - The part of Wetland Park Road adjacent to the building is 5.66 metres to 5.93 metres above the Hong Kong Principal Datum.
 - The part of Emergency Vehicular Access adjacent to the building is 7.55 metres above the Hong Kong Principal Datum.

- 備註:
- ▽ 代表香港主水平基準以上的高度(米)。
 - 虛線代表期數中建築物之最低住宅樓層水平。
 - 毗連建築物的一段濕地公園路為香港主水平基準以上5.66米至5.93米。
 - 毗連建築物的一段緊急車輛通道為香港主水平基準以上7.55米。



TOWER 20 第20座

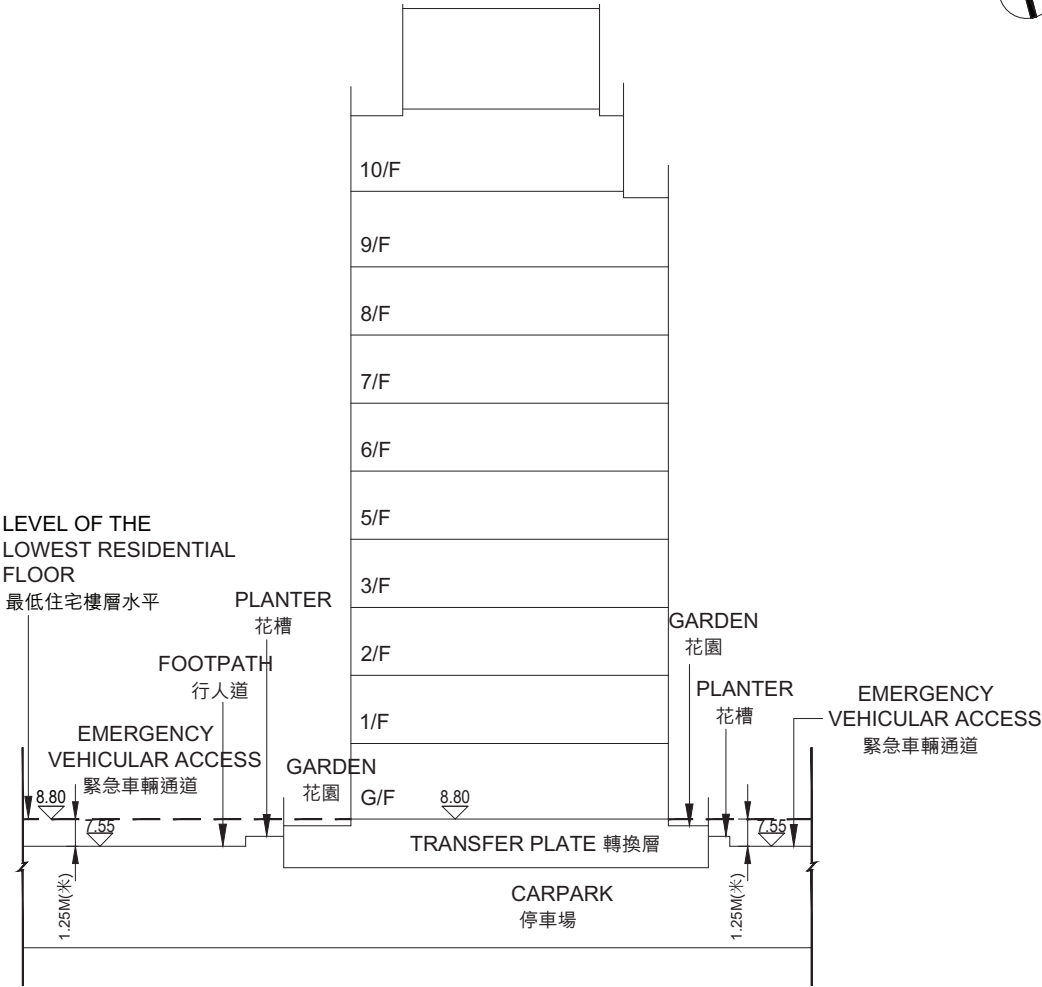




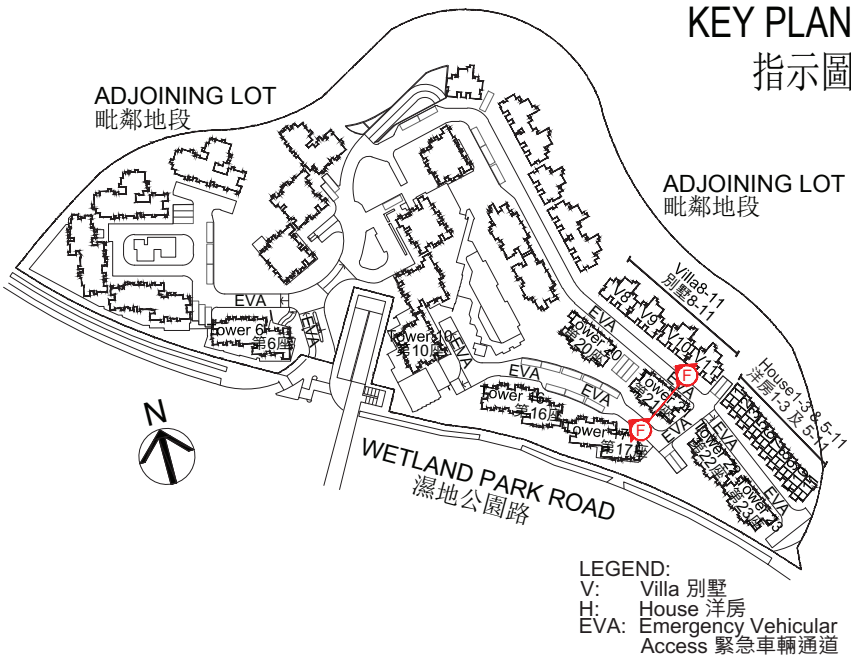
CROSS-SECTION PLAN OF BUILDING IN THE PHASE

期數的建築物的橫截面圖

TOP ROOF	上層天台
ROOF	天台
10/F	RESIDENTIAL UNITS 10樓住宅單位
9/F	RESIDENTIAL UNITS 9樓住宅單位
8/F	RESIDENTIAL UNITS 8樓住宅單位
7/F	RESIDENTIAL UNITS 7樓住宅單位
6/F	RESIDENTIAL UNITS 6樓住宅單位
5/F	RESIDENTIAL UNITS 5樓住宅單位
3/F	RESIDENTIAL UNITS 3樓住宅單位
2/F	RESIDENTIAL UNITS 2樓住宅單位
1/F	RESIDENTIAL UNITS 1樓住宅單位
G/F	RESIDENTIAL UNITS 地下住宅單位
TRANSFER PLATE	轉換層
B/F	地庫



CROSS-SECTION PLAN F
橫截面圖F



- NOTES:
- ▽ Denotes height (in metres) above the Hong Kong Principal Datum.
 - Dotted line denotes the level of the lowest residential floor of the building in the Phase.
 - The two parts of Emergency Vehicular Access adjacent to the building are both 7.55 metres above the Hong Kong Principal Datum.

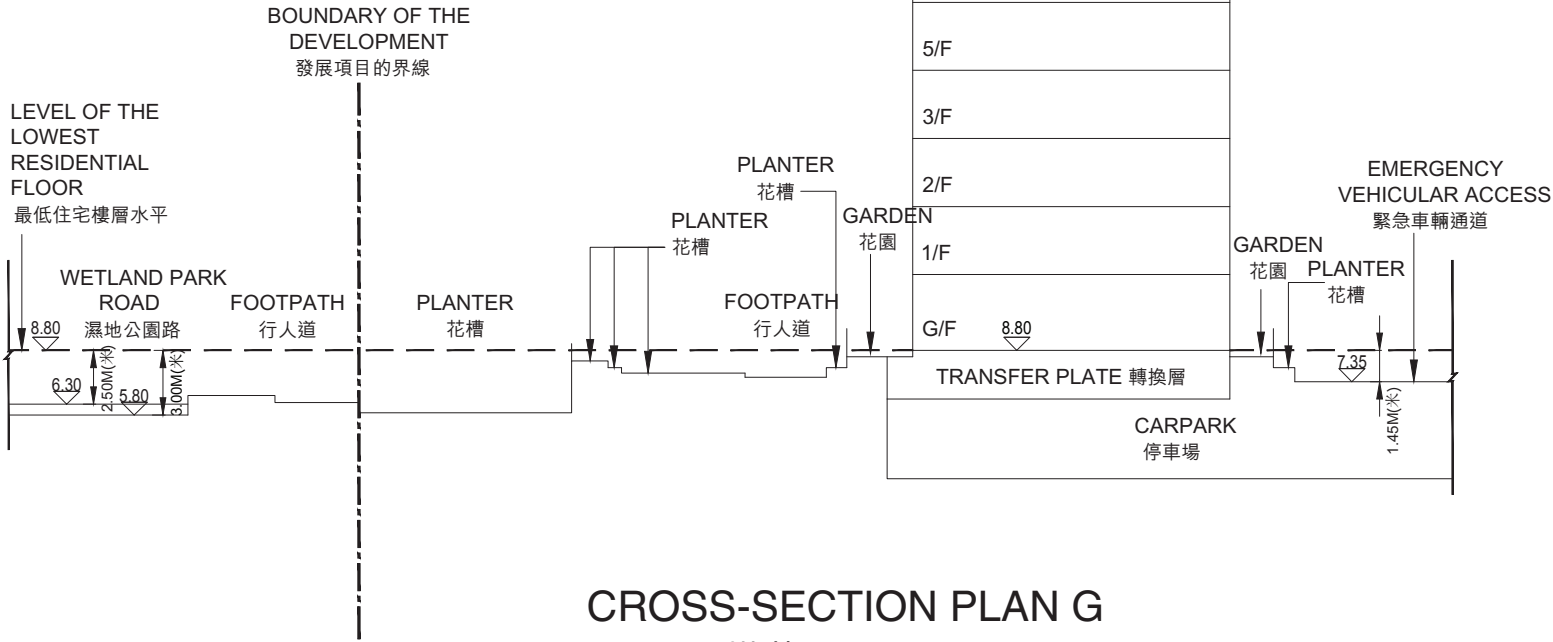
- 備註:
- ▽ 代表香港主水平基準以上的高度(米)。
 - 虛線代表期數中建築物之最低住宅樓層水平。
 - 毗連建築物的兩段緊急車輛通道均為香港主水平基準以上7.55米。



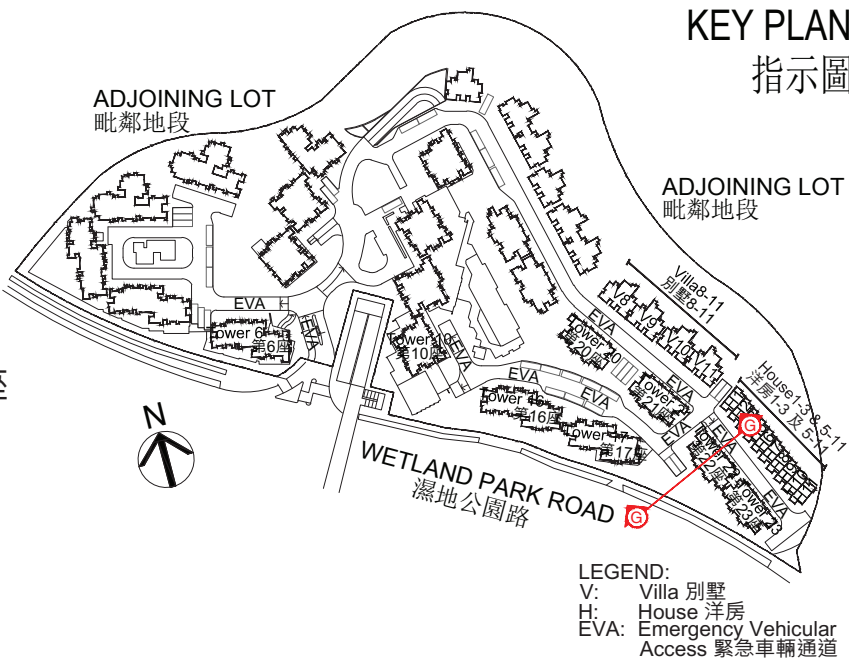
CROSS-SECTION PLAN OF BUILDING IN THE PHASE

期數的建築物的橫截面圖

TOP ROOF	上層天台
ROOF	天台
10/F	RESIDENTIAL UNITS 10樓住宅單位
9/F	RESIDENTIAL UNITS 9樓住宅單位
8/F	RESIDENTIAL UNITS 8樓住宅單位
7/F	RESIDENTIAL UNITS 7樓住宅單位
6/F	RESIDENTIAL UNITS 6樓住宅單位
5/F	RESIDENTIAL UNITS 5樓住宅單位
3/F	RESIDENTIAL UNITS 3樓住宅單位
2/F	RESIDENTIAL UNITS 2樓住宅單位
1/F	RESIDENTIAL UNITS 1樓住宅單位
G/F	RESIDENTIAL UNITS 地下住宅單位
TRANSFER PLATE	轉換層
B/F	地庫



CROSS-SECTION PLAN G
橫截面圖G



NOTES:

- ▽ Denotes height (in metres) above the Hong Kong Principal Datum.
- Dotted line denotes the level of the lowest residential floor of the building in the Phase.
- The part of Wetland Park Road adjacent to the building is 5.80 metres to 6.30 metres above the Hong Kong Principal Datum.
- The part of Emergency Vehicular Access adjacent to the building is 7.35 metres above the Hong Kong Principal Datum.

備註:

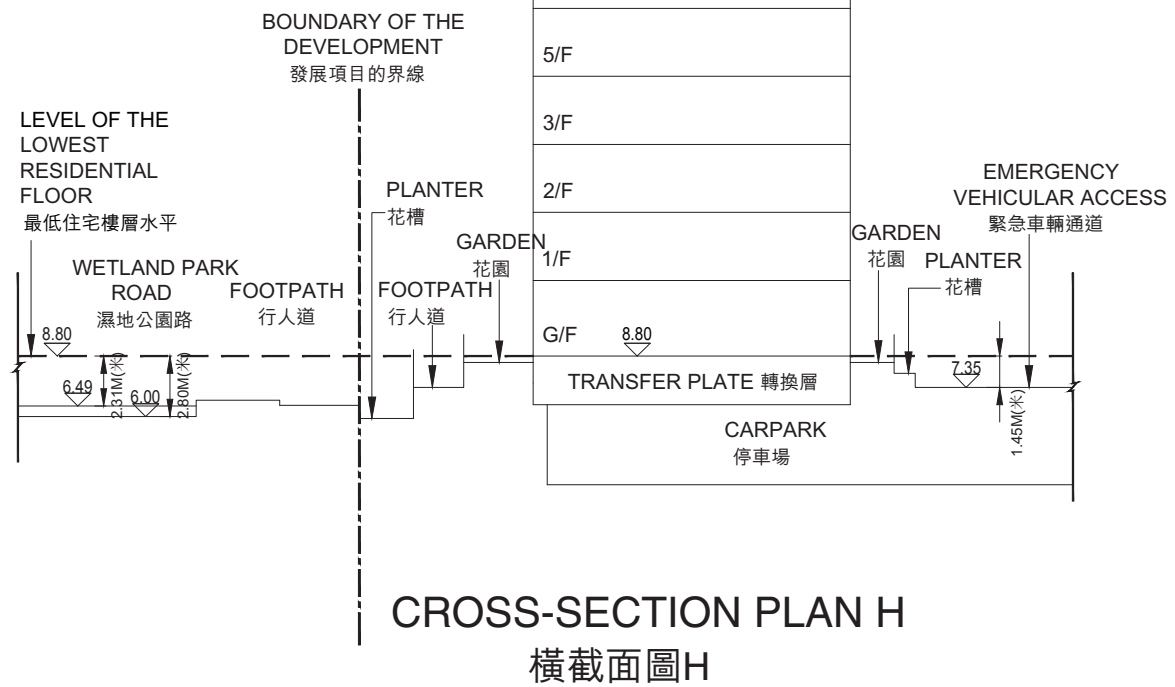
- ▽ 代表香港主水平基準以上的高度(米)。
- 虛線代表期數中建築物之最低住宅樓層水平。
- 毗連建築物的一段濕地公園路為香港主水平基準以上5.80米至6.30米。
- 毗連建築物的一段緊急車輛通道為香港主水平基準以上7.35米。



CROSS-SECTION PLAN OF BUILDING IN THE PHASE

期數的建築物的橫截面圖

TOP ROOF	上層天台
ROOF	天台
10/F	RESIDENTIAL UNITS 10樓住宅單位
9/F	RESIDENTIAL UNITS 9樓住宅單位
8/F	RESIDENTIAL UNITS 8樓住宅單位
7/F	RESIDENTIAL UNITS 7樓住宅單位
6/F	RESIDENTIAL UNITS 6樓住宅單位
5/F	RESIDENTIAL UNITS 5樓住宅單位
3/F	RESIDENTIAL UNITS 3樓住宅單位
2/F	RESIDENTIAL UNITS 2樓住宅單位
1/F	RESIDENTIAL UNITS 1樓住宅單位
G/F	RESIDENTIAL UNITS 地下住宅單位
TRANSFER PLATE	轉換層
B/F	地庫



- NOTES:
1. ▽ Denotes height (in metres) above the Hong Kong Principal Datum.
 2. --- Dotted line denotes the level of the lowest residential floor of the building in the Phase.
 3. The part of Wetland Park Road adjacent to the building is 6.00 metres to 6.49 metres above the Hong Kong Principal Datum.
 4. The part of Emergency Vehicular Access adjacent to the building is 7.35 metres above the Hong Kong Principal Datum.

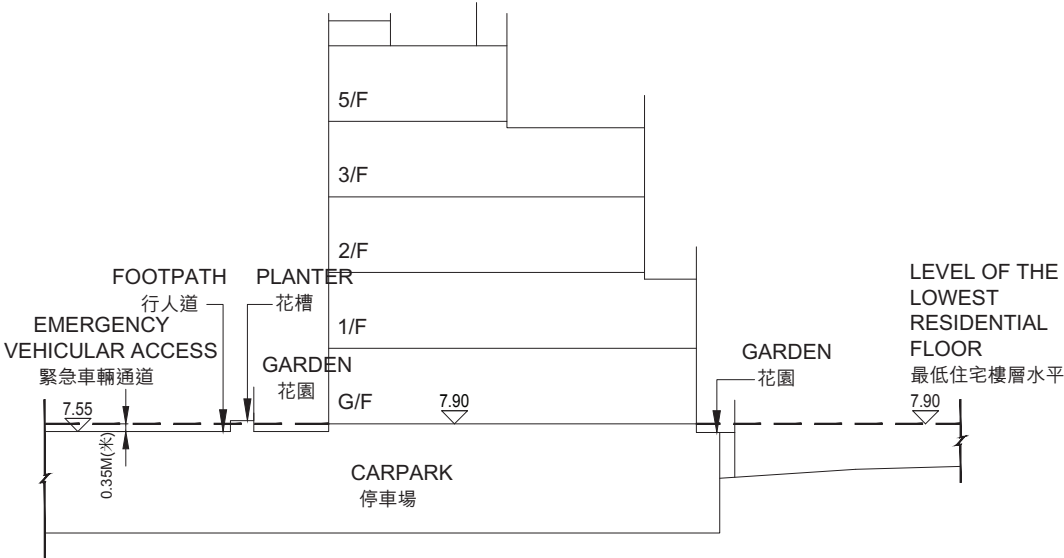
- 備註:
1. ▽ 代表香港主水平基準以上的高度(米)。
 2. --- 虛線代表期數中建築物之最低住宅樓層水平。
 3. 毗連建築物的一段濕地公園路為香港主水平基準以上6.00米至6.49米。
 4. 毗連建築物的一段緊急車輛通道為香港主水平基準以上7.35米。



CROSS-SECTION PLAN OF BUILDING IN THE PHASE
期數的建築物的橫截面圖

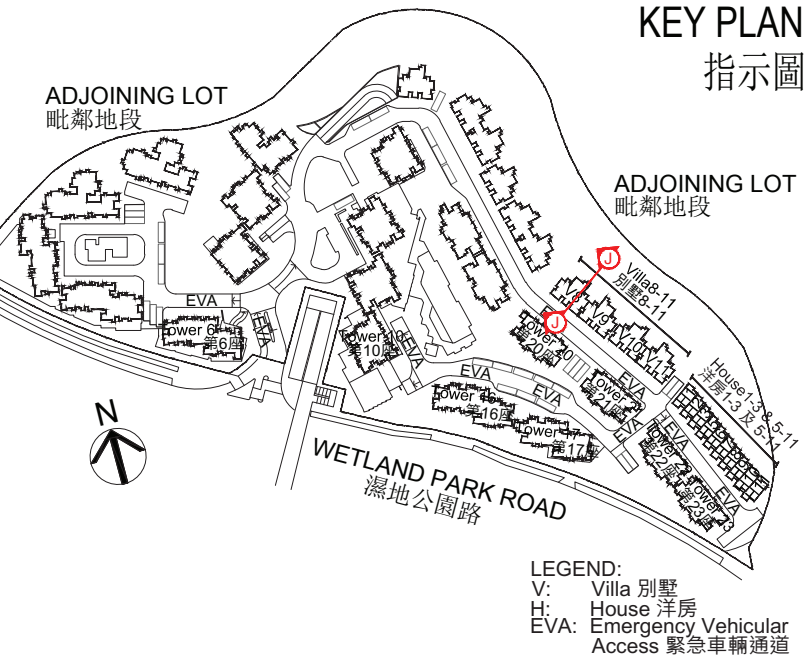
VILLA 8 別墅8

TOP ROOF	上層天台
ROOF	天台
5/F	RESIDENTIAL UNITS 5樓住宅單位
3/F	RESIDENTIAL UNITS 3樓住宅單位
2/F	RESIDENTIAL UNITS 2樓住宅單位
1/F	RESIDENTIAL UNITS 1樓住宅單位
G/F	RESIDENTIAL UNITS 地下住宅單位
B/F	地庫



CROSS-SECTION PLAN J
橫截面圖J

- NOTES:
- ▽ Denotes height (in metres) above the Hong Kong Principal Datum.
 - Dotted line denotes the level of the lowest residential floor of the building in the Phase.
 - The part of Emergency Vehicular Access adjacent to the building is 7.55 metres above the Hong Kong Principal Datum.

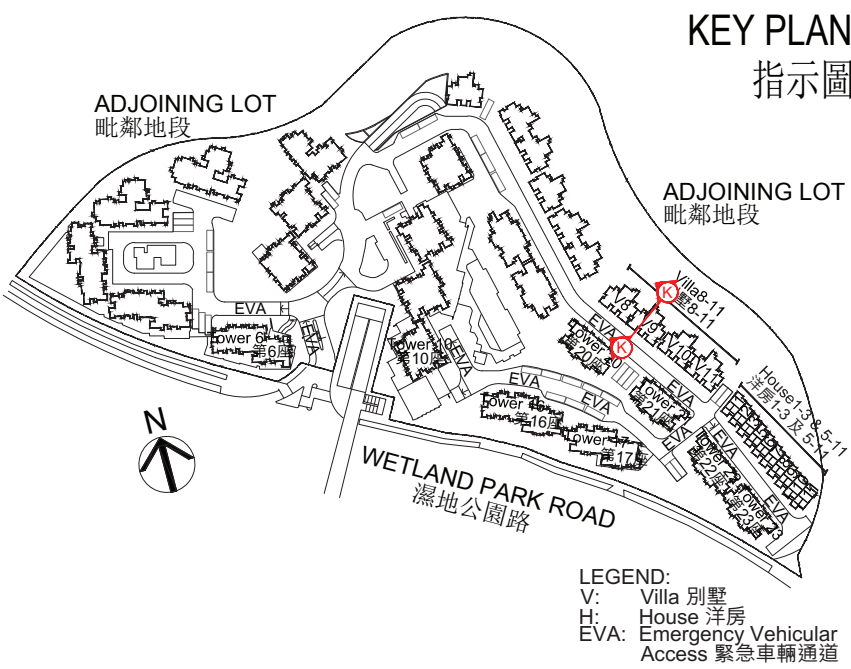


- 備註:
- ▽ 代表香港主水平基準以上的高度(米)。
 - 虛線代表期數中建築物之最低住宅樓層水平。
 - 毗連建築物的一段緊急車輛通道為香港主水平基準以上7.55米。

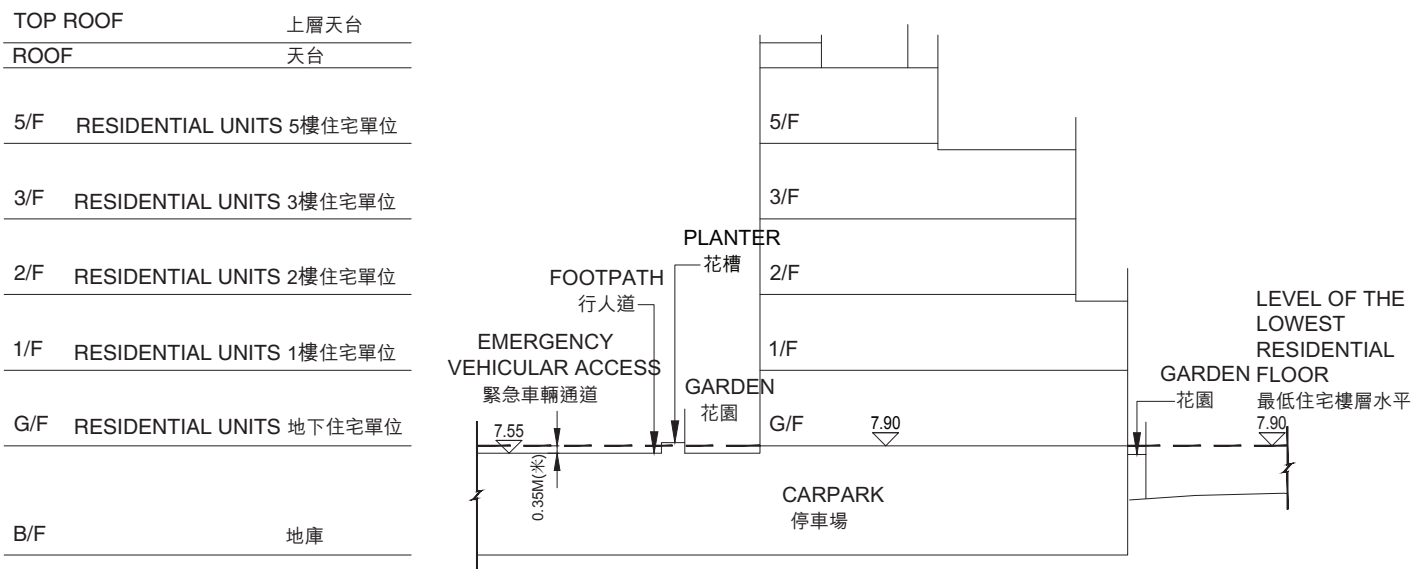


CROSS-SECTION PLAN OF BUILDING IN THE PHASE

期數的建築物的橫截面圖



VILLA 9 別墅9



CROSS-SECTION PLAN K
橫截面圖K

- NOTES:
- ▽ Denotes height (in metres) above the Hong Kong Principal Datum.
 - Dotted line denotes the level of the lowest residential floor of the building in the Phase.
 - The part of Emergency Vehicular Access adjacent to the building is 7.55 metres above the Hong Kong Principal Datum.

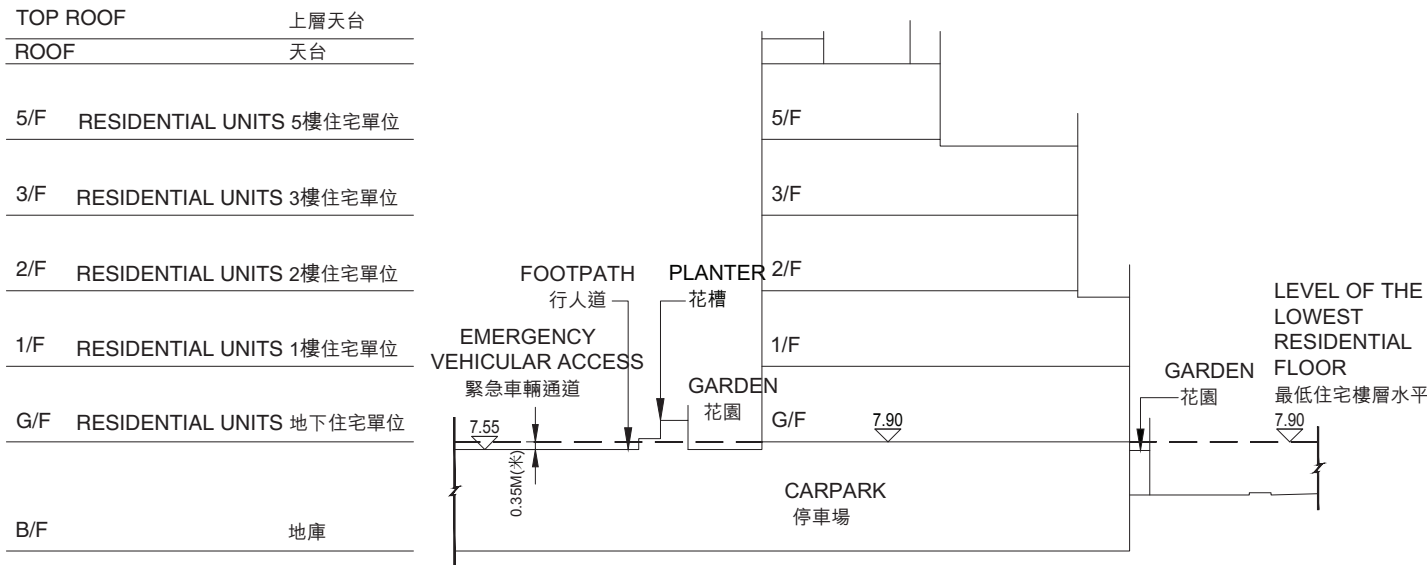
- 備註:
- ▽ 代表香港主水平基準以上的高度(米)。
 - 虛線代表期數中建築物之最低住宅樓層水平。
 - 毗連建築物的一段緊急車輛通道為香港主水平基準以上7.55米。



CROSS-SECTION PLAN OF BUILDING IN THE PHASE

期數的建築物的橫截面圖

VILLA 10 別墅10

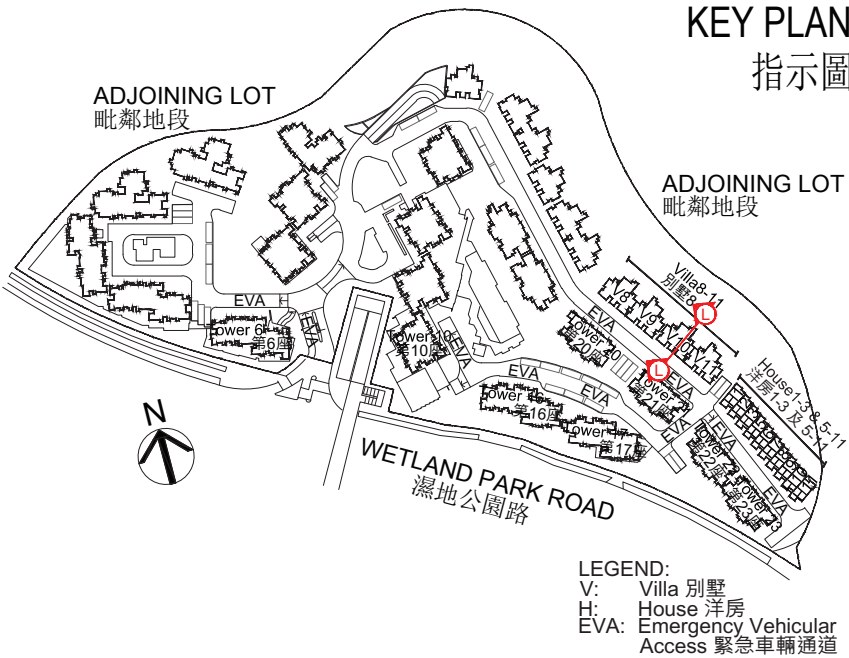


CROSS-SECTION PLAN L

橫截面圖L

NOTES:

- ▽ Denotes height (in metres) above the Hong Kong Principal Datum.
- Dotted line denotes the level of the lowest residential floor of the building in the Phase.
- The part of Emergency Vehicular Access adjacent to the building is 7.55 metres above the Hong Kong Principal Datum.



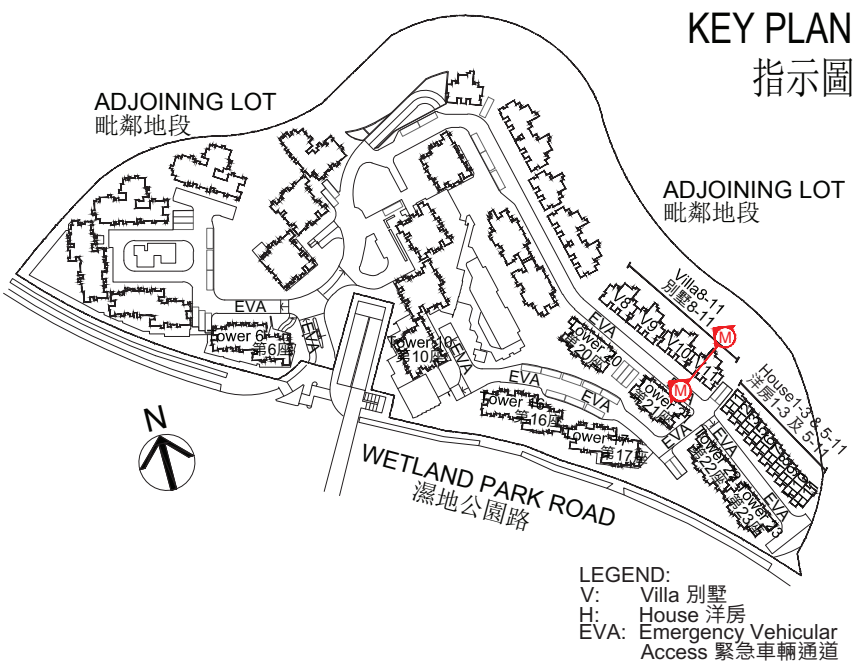
備註:

- ▽ 代表香港主水平基準以上的高度(米)。
- 虛線代表期數中建築物之最低住宅樓層水平。
- 毗連建築物的一段緊急車輛通道為香港主水平基準以上7.55米。

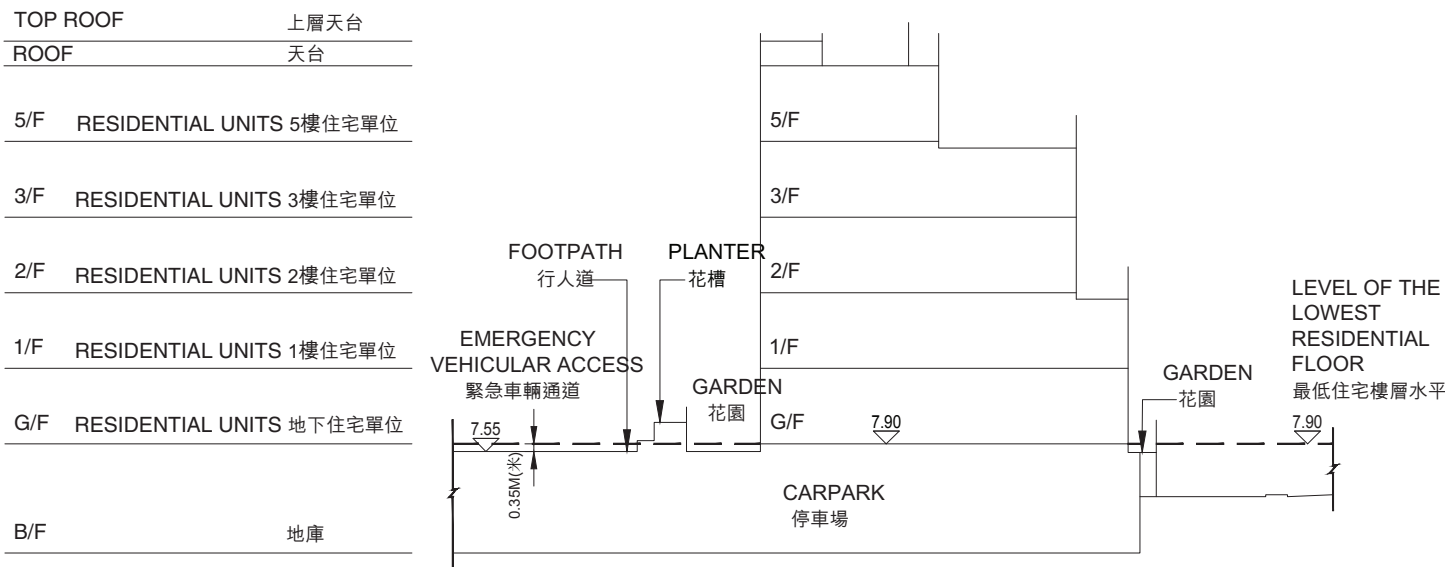


CROSS-SECTION PLAN OF BUILDING IN THE PHASE

期數的建築物的橫截面圖



VILLA 11 別墅11



CROSS-SECTION PLAN M
橫截面圖M

- NOTES:
- ▽ Denotes height (in metres) above the Hong Kong Principal Datum.
 - Dotted line denotes the level of the lowest residential floor of the building in the Phase.
 - The part of Emergency Vehicular Access adjacent to the building is 7.55 metres above the Hong Kong Principal Datum.

- 備註:
- ▽ 代表香港主水平基準以上的高度(米)。
 - 虛線代表期數中建築物之最低住宅樓層水平。
 - 毗連建築物的一段緊急車輛通道為香港主水平基準以上7.55米。



NOTES:

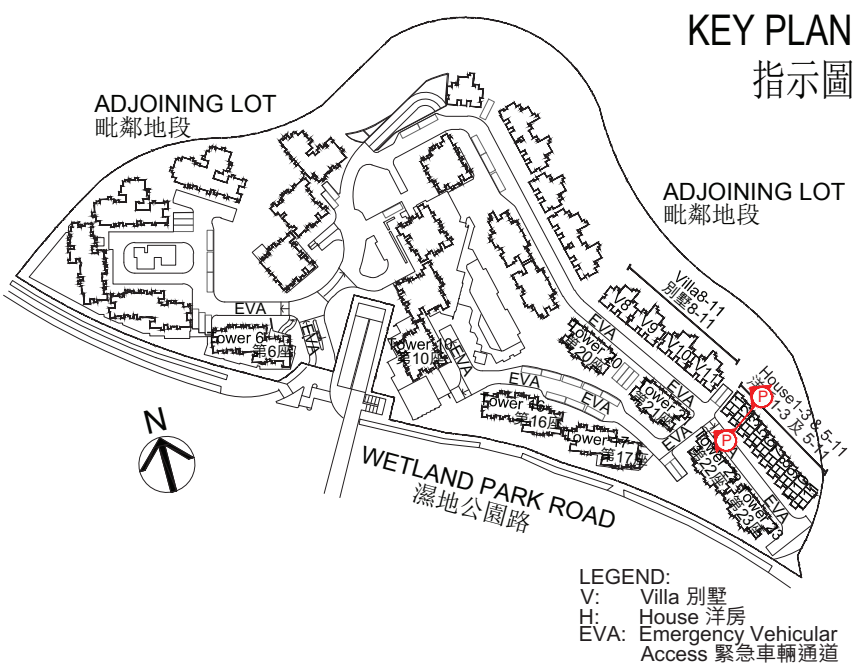
1. ∇ Denotes height (in metres) above the Hong Kong Principal Datum.
2. --- Dotted line denotes the level of the lowest residential floor of the building in the Phase.
3. The part of Emergency Vehicular Access adjacent to the building is 7.35 metres to 7.55 metres above the Hong Kong Principal Datum.

1. ▽ 代表香港主水平基準以上的高度(米)。
2. --- 虛線代表期數中建築物之最低住宅樓層水平。
3. 毗連建築物的一段緊急車輛通道為香港主水平基準以上7.35米至7.55米。



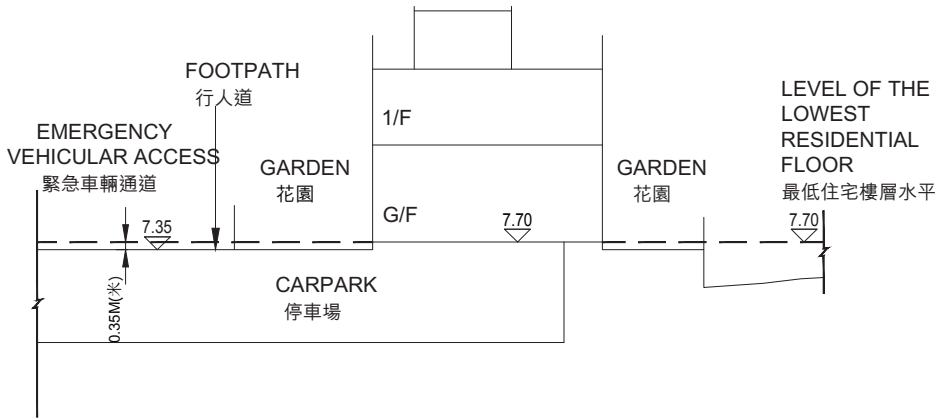
CROSS-SECTION PLAN OF BUILDING IN THE PHASE

期數的建築物的橫截面圖



HOUSE 2 洋房2

TOP ROOF	上層天台
ROOF	天台
1/F	1樓
G/F	地下
B/F	地庫



CROSS-SECTION PLAN P

橫截面圖P

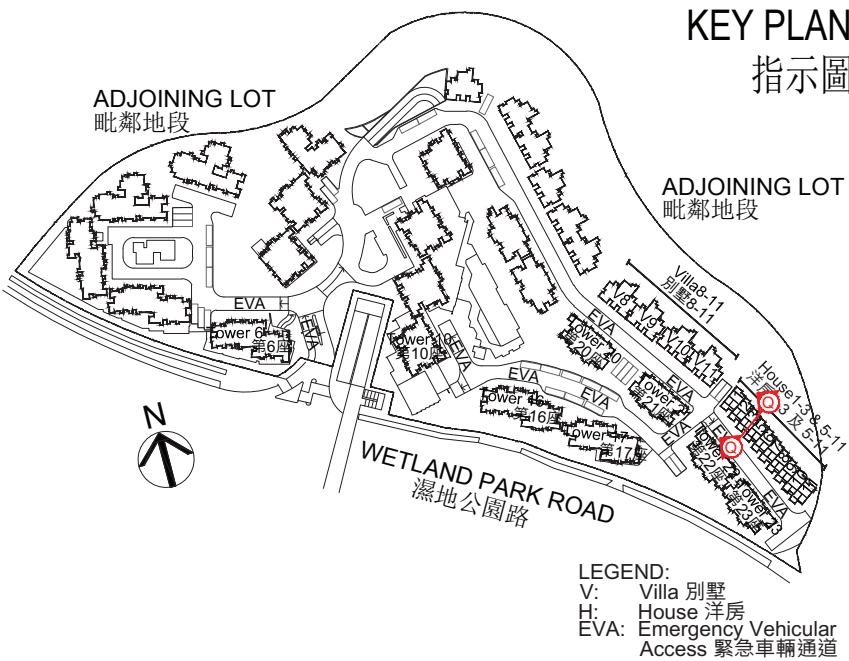
- NOTES:
- ▽ Denotes height (in metres) above the Hong Kong Principal Datum.
 - Dotted line denotes the level of the lowest residential floor of the building in the Phase.
 - The part of Emergency Vehicular Access adjacent to the building is 7.35 metres above the Hong Kong Principal Datum.

- 備註:
- ▽ 代表香港主水平基準以上的高度(米)。
 - 虛線代表期數中建築物之最低住宅樓層水平。
 - 毗連建築物的一段緊急車輛通道為香港主水平基準以上7.35米。



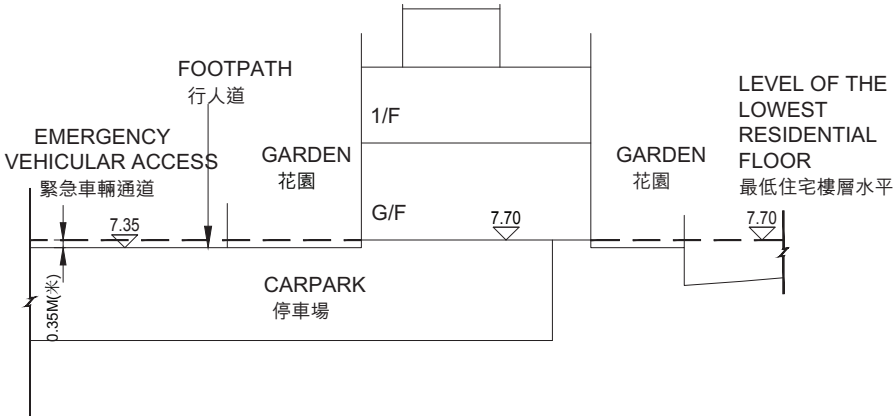
CROSS-SECTION PLAN OF BUILDING IN THE PHASE

期數的建築物的橫截面圖



HOUSE 3 洋房3

TOP ROOF	上層天台
ROOF	天台
1/F	1樓
G/F	地下
B/F	地庫



CROSS-SECTION PLAN Q
橫截面圖Q

NOTES:

- ▽ Denotes height (in metres) above the Hong Kong Principal Datum.
- Dotted line denotes the level of the lowest residential floor of the building in the Phase.
- The part of Emergency Vehicular Access adjacent to the building is 7.35 metres above the Hong Kong Principal Datum.

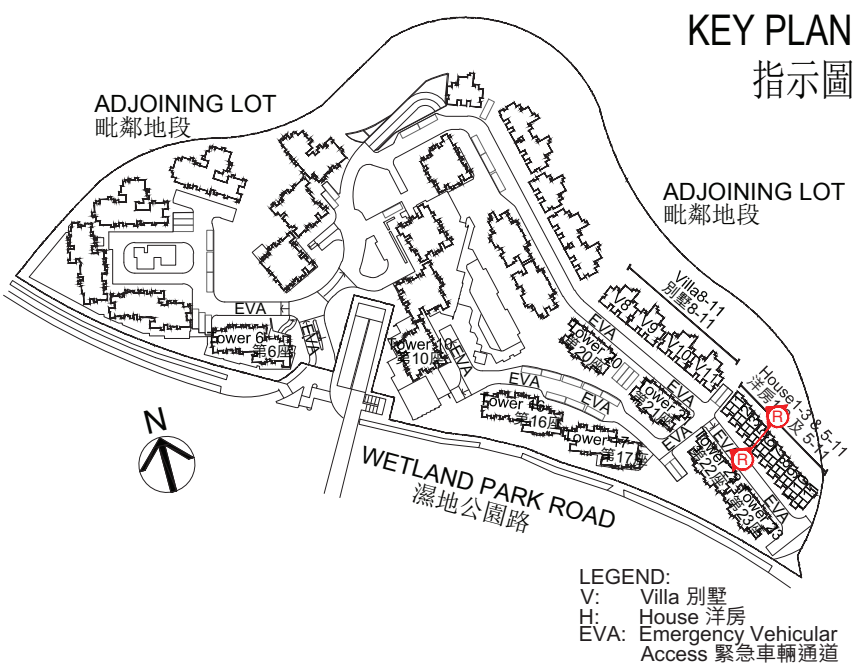
備註:

- ▽ 代表香港主水平基準以上的高度(米)。
- 虛線代表期數中建築物之最低住宅樓層水平。
- 毗連建築物的一段緊急車輛通道為香港主水平基準以上7.35米。



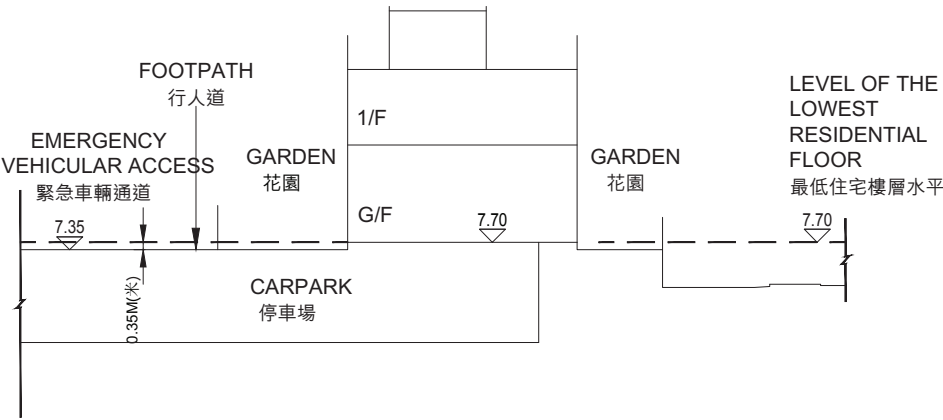
CROSS-SECTION PLAN OF BUILDING IN THE PHASE

期數的建築物的橫截面圖



HOUSE 5 洋房5

TOP ROOF	上層天台
ROOF	天台
1/F	1樓
G/F	地下
B/F	地庫



CROSS-SECTION PLAN R
橫截面圖R

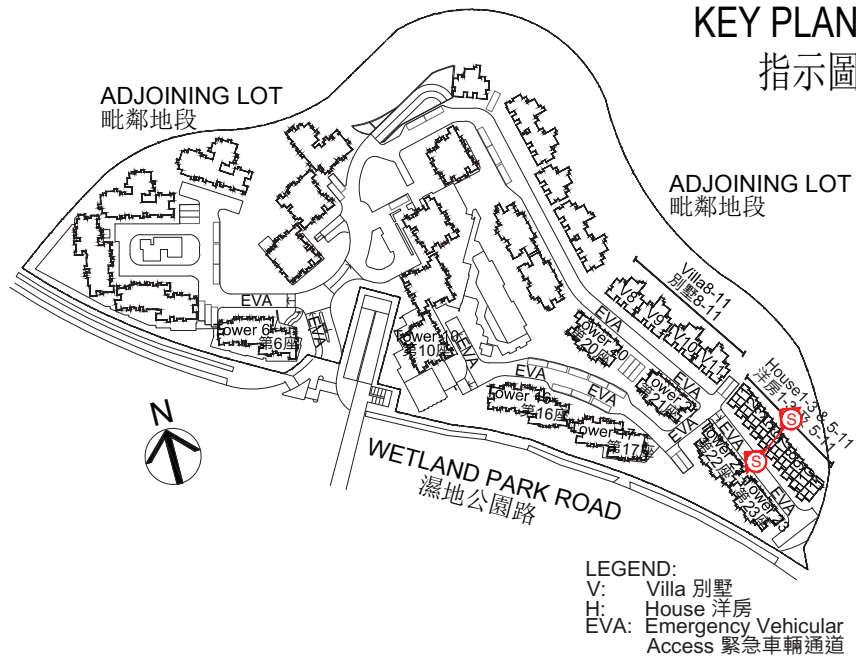
- NOTES:
1. ▽ Denotes height (in metres) above the Hong Kong Principal Datum.
 2. --- Dotted line denotes the level of the lowest residential floor of the building in the Phase.
 3. The part of Emergency Vehicular Access adjacent to the building is 7.35 metres above the Hong Kong Principal Datum.

- 備註:
1. ▽ 代表香港主水平基準以上的高度(米)。
 2. --- 虛線代表期數中建築物之最低住宅樓層水平。
 3. 毗連建築物的一段緊急車輛通道為香港主水平基準以上7.35米。



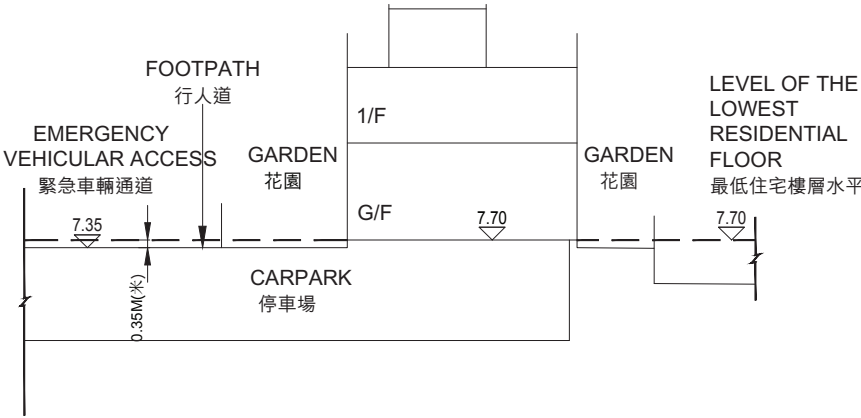
CROSS-SECTION PLAN OF BUILDING IN THE PHASE

期數的建築物的橫截面圖



HOUSE 6 洋房6

TOP ROOF	上層天台
ROOF	天台
1/F	1樓
G/F	地下
B/F	地庫



CROSS-SECTION PLAN S
橫截面圖S

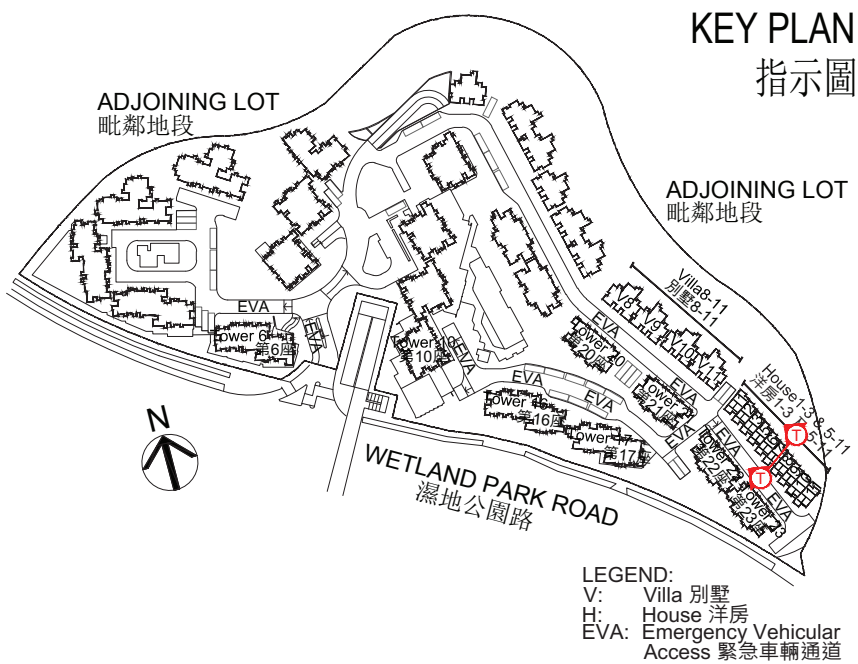
- NOTES:
- ▽ Denotes height (in metres) above the Hong Kong Principal Datum.
 - Dotted line denotes the level of the lowest residential floor of the building in the Phase.
 - The part of Emergency Vehicular Access adjacent to the building is 7.35 metres above the Hong Kong Principal Datum.

- 備註:
- ▽ 代表香港主水平基準以上的高度(米)。
 - 虛線代表期數中建築物之最低住宅樓層水平。
 - 毗連建築物的一段緊急車輛通道為香港主水平基準以上7.35米。



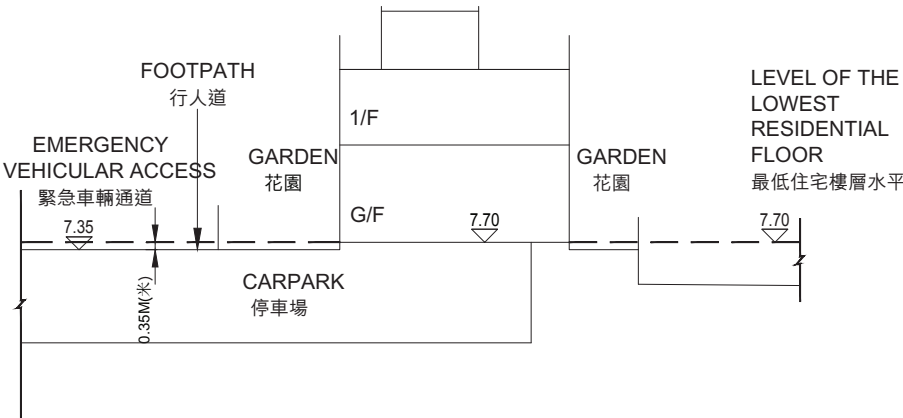
CROSS-SECTION PLAN OF BUILDING IN THE PHASE

期數的建築物的橫截面圖



HOUSE 7 洋房7

TOP ROOF	上層天台
ROOF	天台
1/F	1樓
G/F	地下
B/F	地庫



CROSS-SECTION PLAN T

橫截面圖T

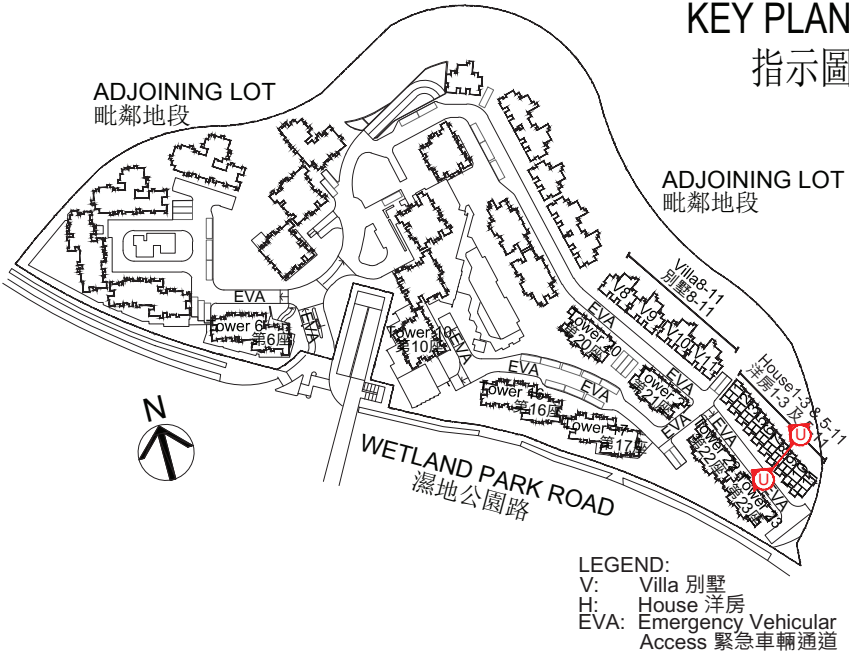
- NOTES:
- ▽ Denotes height (in metres) above the Hong Kong Principal Datum.
 - Dotted line denotes the level of the lowest residential floor of the building in the Phase.
 - The part of Emergency Vehicular Access adjacent to the building is 7.35 metres above the Hong Kong Principal Datum.

- 備註:
- ▽ 代表香港主水平基準以上的高度(米)。
 - 虛線代表期數中建築物之最低住宅樓層水平。
 - 毗連建築物的一段緊急車輛通道為香港主水平基準以上7.35米。

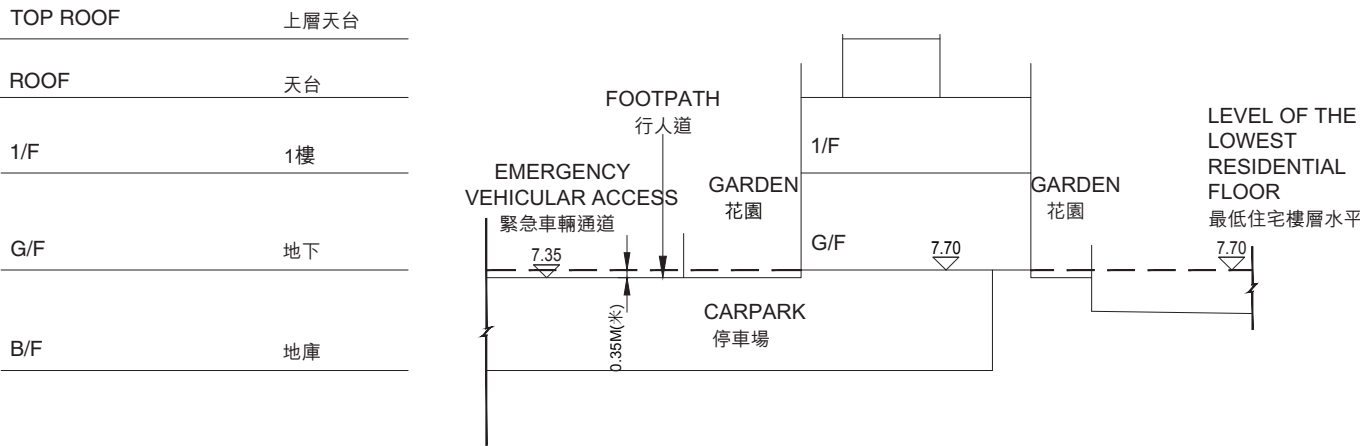


CROSS-SECTION PLAN OF BUILDING IN THE PHASE

期數的建築物的橫截面圖



HOUSE 8 洋房8



CROSS-SECTION PLAN U
橫截面圖U

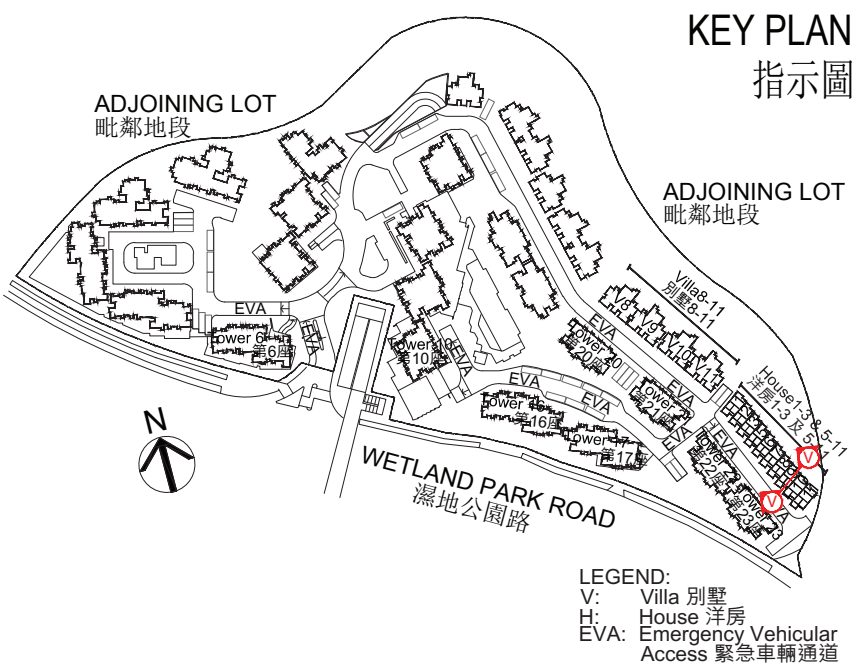
- NOTES:
- ▽ Denotes height (in metres) above the Hong Kong Principal Datum.
 - Dotted line denotes the level of the lowest residential floor of the building in the Phase.
 - The part of Emergency Vehicular Access adjacent to the building is 7.35 metres above the Hong Kong Principal Datum.

- 備註:
- ▽ 代表香港主水平基準以上的高度(米)。
 - 虛線代表期數中建築物之最低住宅樓層水平。
 - 毗連建築物的一段緊急車輛通道為香港主水平基準以上7.35米。

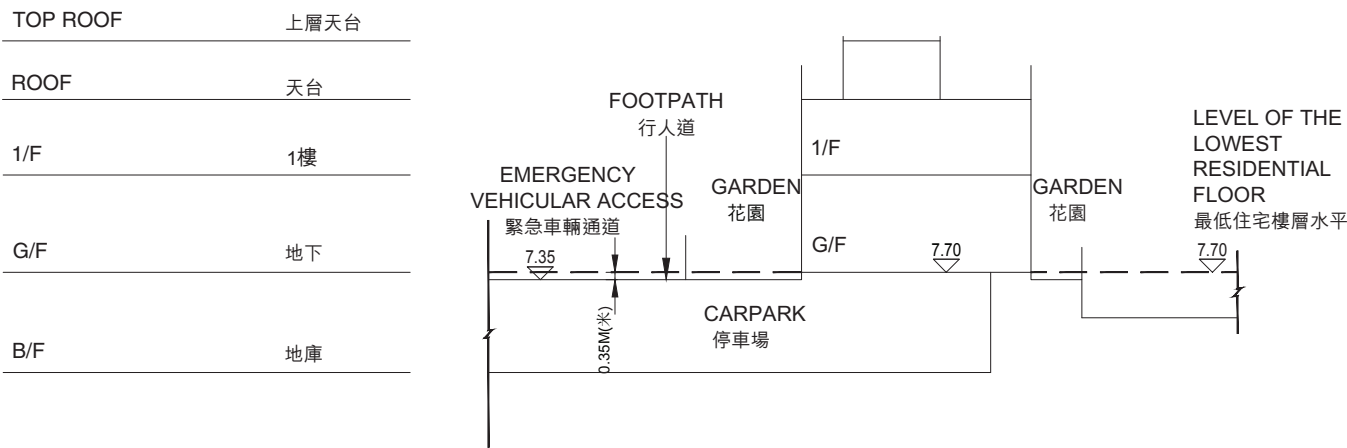


CROSS-SECTION PLAN OF BUILDING IN THE PHASE

期數的建築物的橫截面圖



HOUSE 9 洋房9



CROSS-SECTION PLAN V
橫截面圖V

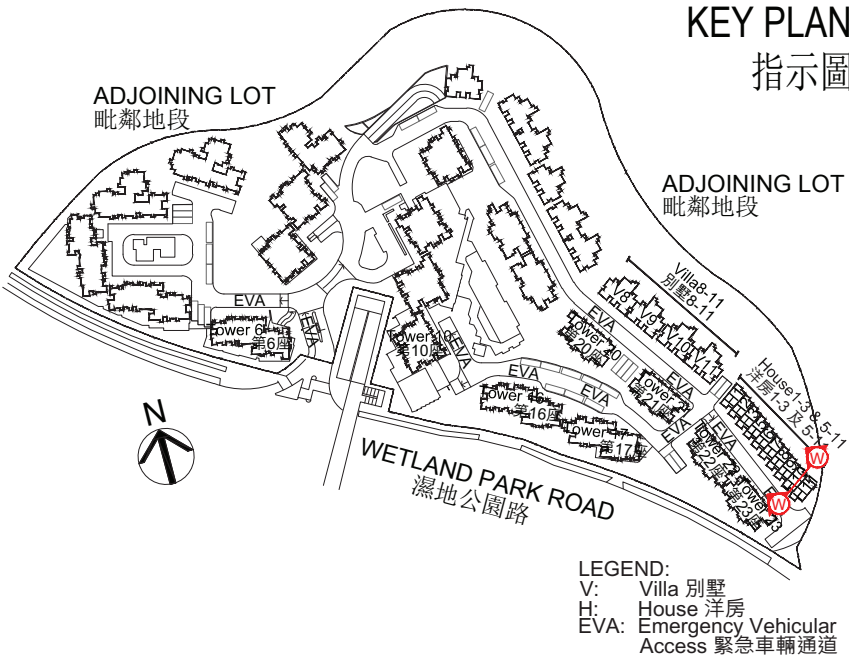
- NOTES:
- ▽ Denotes height (in metres) above the Hong Kong Principal Datum.
 - Dotted line denotes the level of the lowest residential floor of the building in the Phase.
 - The part of Emergency Vehicular Access adjacent to the building is 7.35 metres above the Hong Kong Principal Datum.

- 備註:
- ▽ 代表香港主水平基準以上的高度(米)。
 - 虛線代表期數中建築物之最低住宅樓層水平。
 - 毗連建築物的一段緊急車輛通道為香港主水平基準以上7.35米。

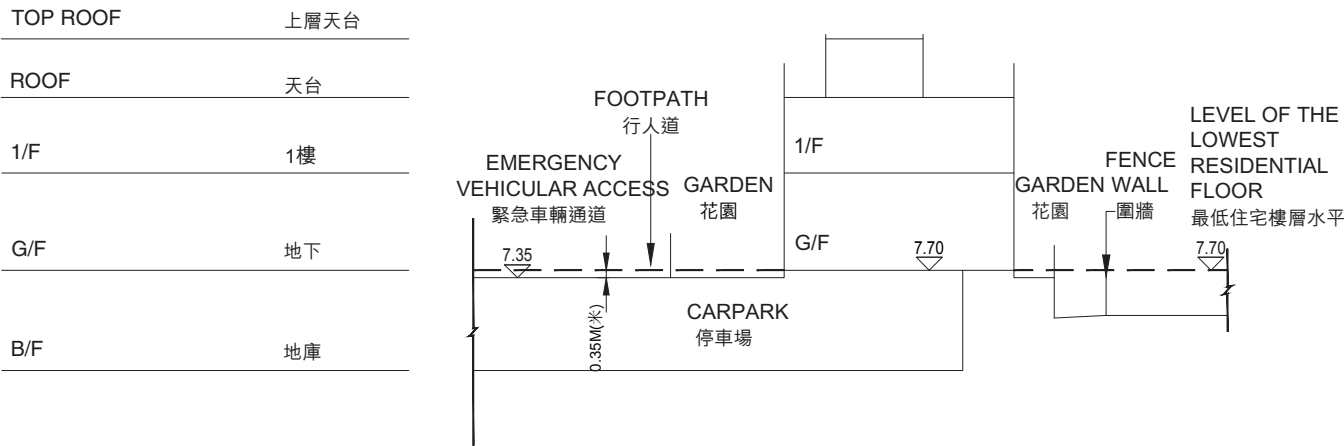


CROSS-SECTION PLAN OF BUILDING IN THE PHASE

期數的建築物的橫截面圖



HOUSE 10 洋房10



CROSS-SECTION PLAN W
橫截面圖W

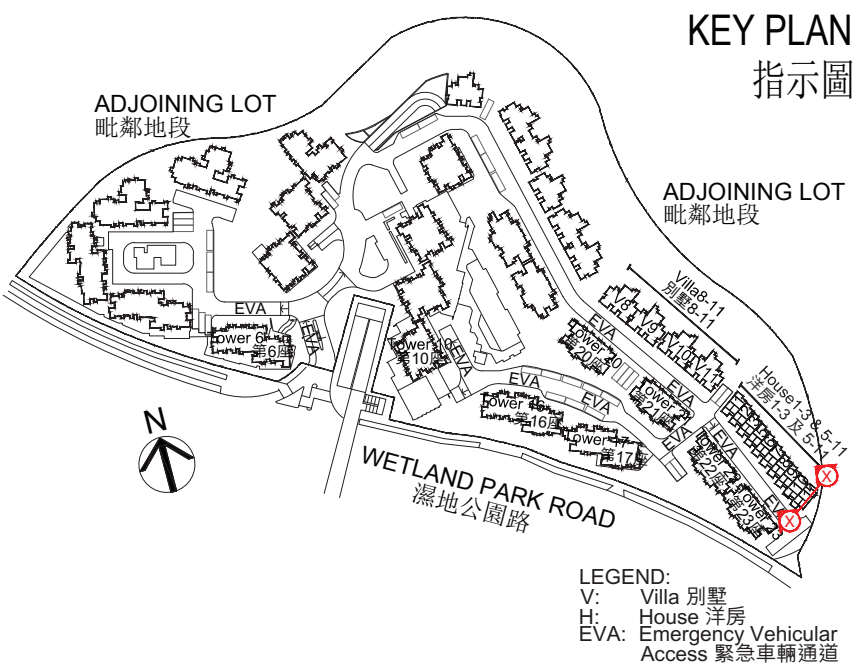
- NOTES:
- ▽ Denotes height (in metres) above the Hong Kong Principal Datum.
 - Dotted line denotes the level of the lowest residential floor of the building in the Phase.
 - The part of Emergency Vehicular Access adjacent to the building is 7.35 metres above the Hong Kong Principal Datum.

- 備註:
- ▽ 代表香港主水平基準以上的高度(米)。
 - 虛線代表期數中建築物之最低住宅樓層水平。
 - 毗連建築物的一段緊急車輛通道為香港主水平基準以上7.35米。

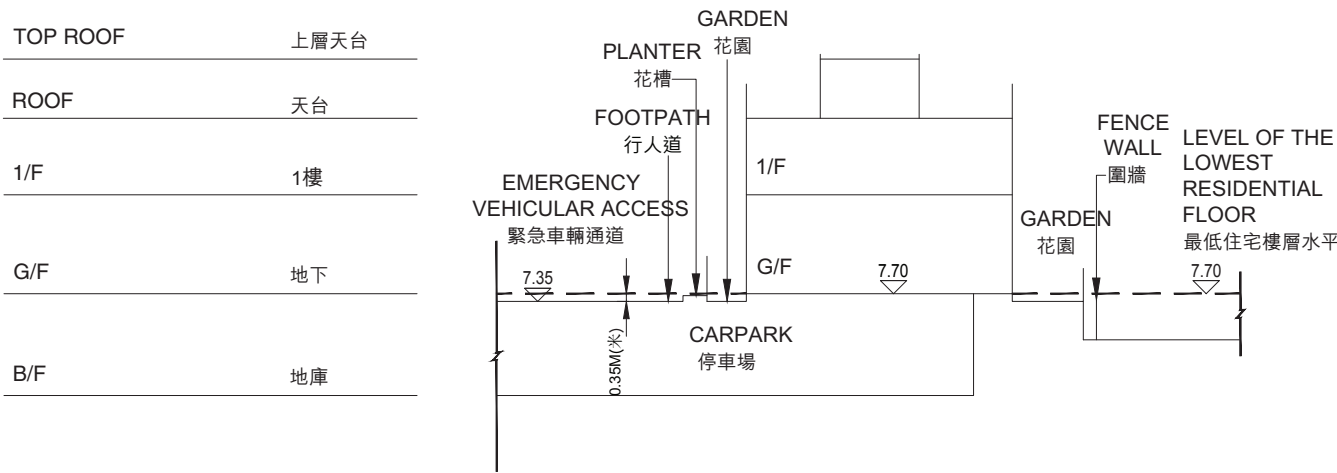


CROSS-SECTION PLAN OF BUILDING IN THE PHASE

期數的建築物的橫截面圖



HOUSE 11 洋房11



CROSS-SECTION PLAN X
橫截面圖X

- NOTES:
1. ▽ Denotes height (in metres) above the Hong Kong Principal Datum.
 2. --- Dotted line denotes the level of the lowest residential floor of the building in the Phase.
 3. The part of Emergency Vehicular Access adjacent to the building is 7.35 metres above the Hong Kong Principal Datum.

- 備註:
1. ▽ 代表香港主水平基準以上的高度(米)。
 2. --- 虛線代表期數中建築物之最低住宅樓層水平。
 3. 毗連建築物的一段緊急車輛通道為香港主水平基準以上7.35米。