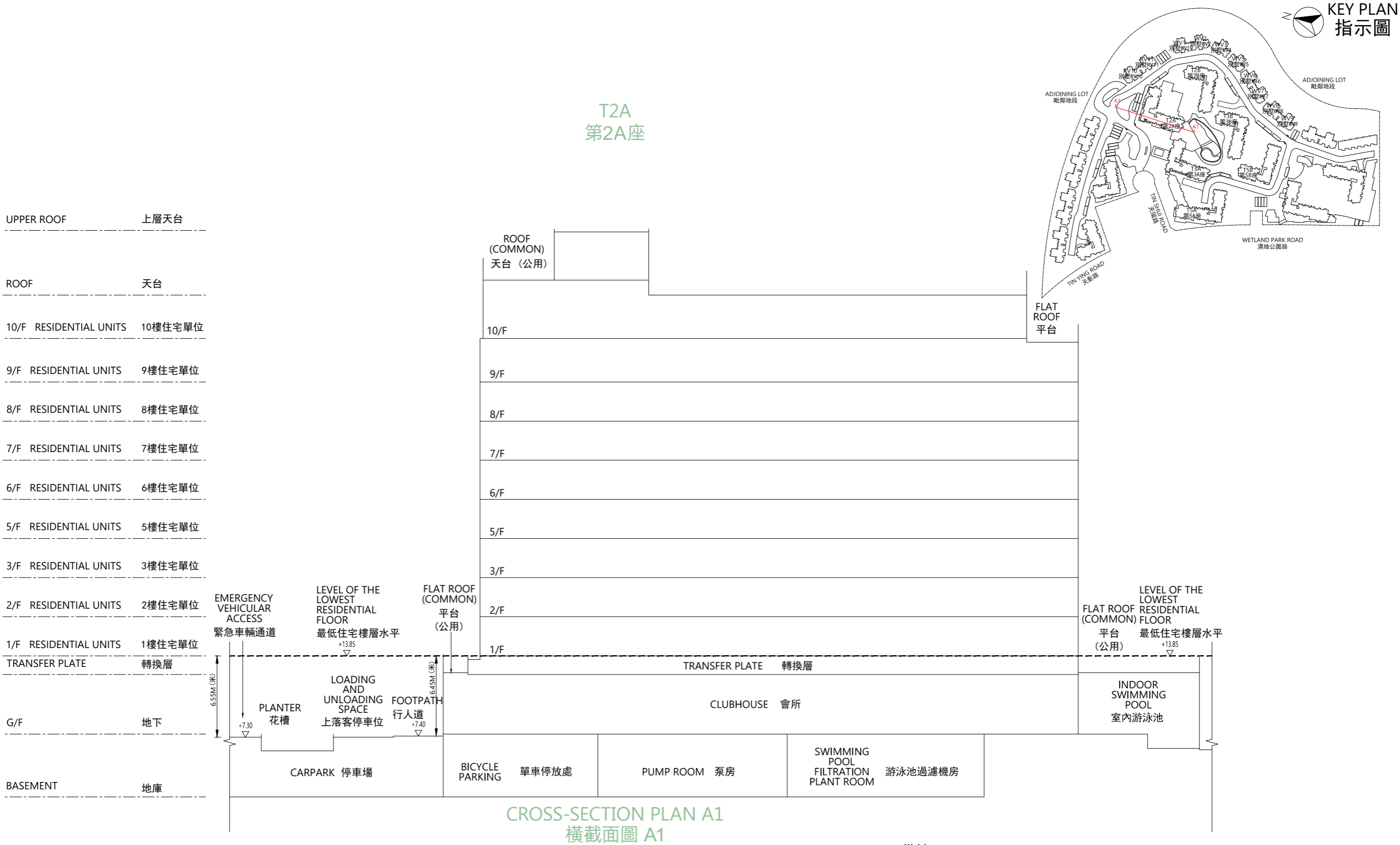


CROSS-SECTION PLAN OF BUILDING IN THE PHASE
期數中的建築物的橫截面圖



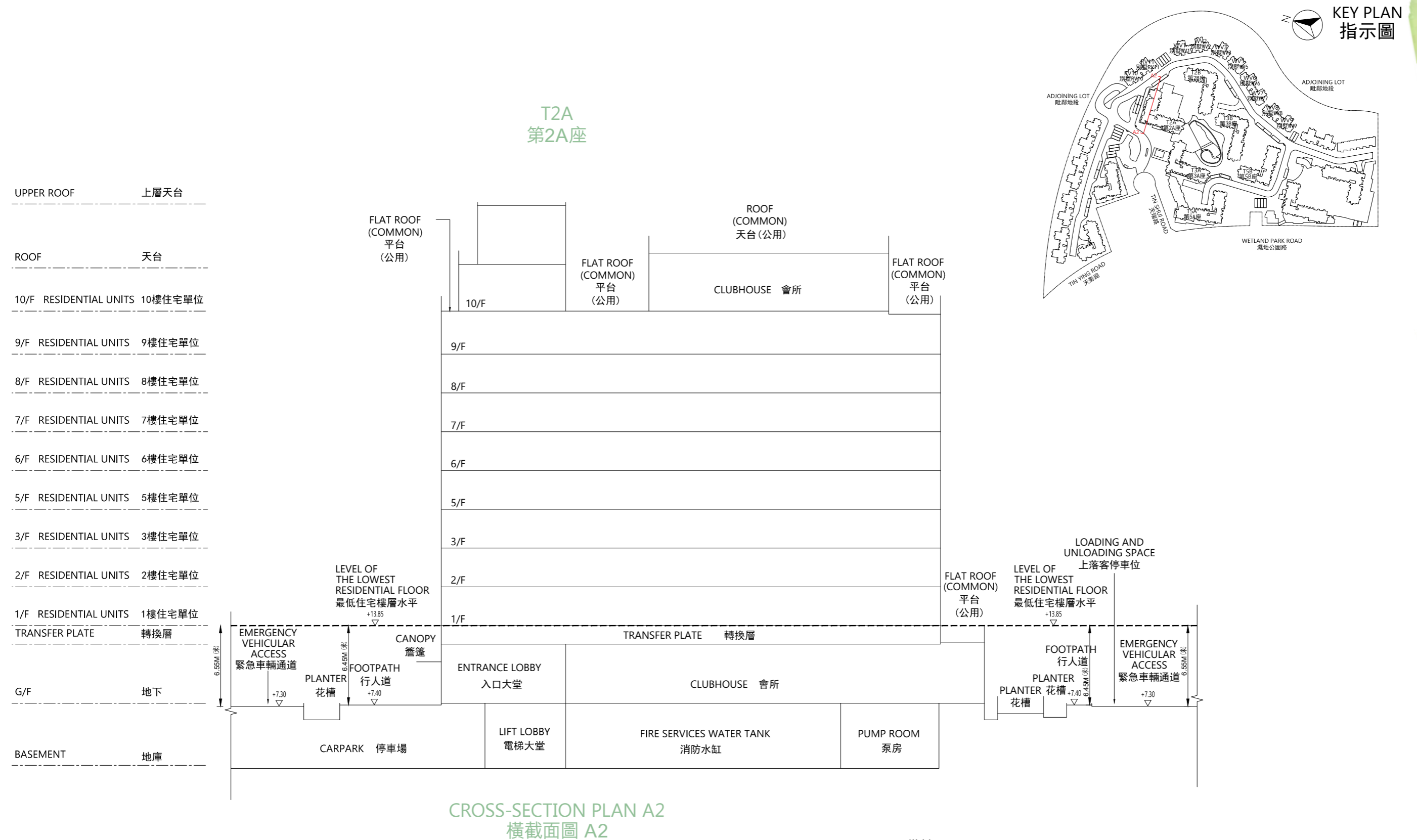
NOTES:

1. ▽ Denotes height (in metres) above the Hong Kong Principal Datum.
2. --Dotted line denotes the level of the lowest residential floor of the building in the Phase.
3. The part of Emergency Vehicular Access adjacent to the building is 7.30 metres above the Hong Kong Principal Datum.
4. The part of footpath adjacent to the building is 7.40 metres above the Hong Kong Principal Datum.

備註：

1. ▽ 代表香港主水平基準以上的高度(米)。
2. -- 虛線代表期數中建築物之最低住宅樓層水平。
3. 毗連建築物的一段緊急車輛通道為香港主水平基準以上7.30米。
4. 毗連建築物的一段行人道為香港主水平基準以上7.40米。

CROSS-SECTION PLAN OF BUILDING IN THE PHASE 期數中的建築物的橫截面圖



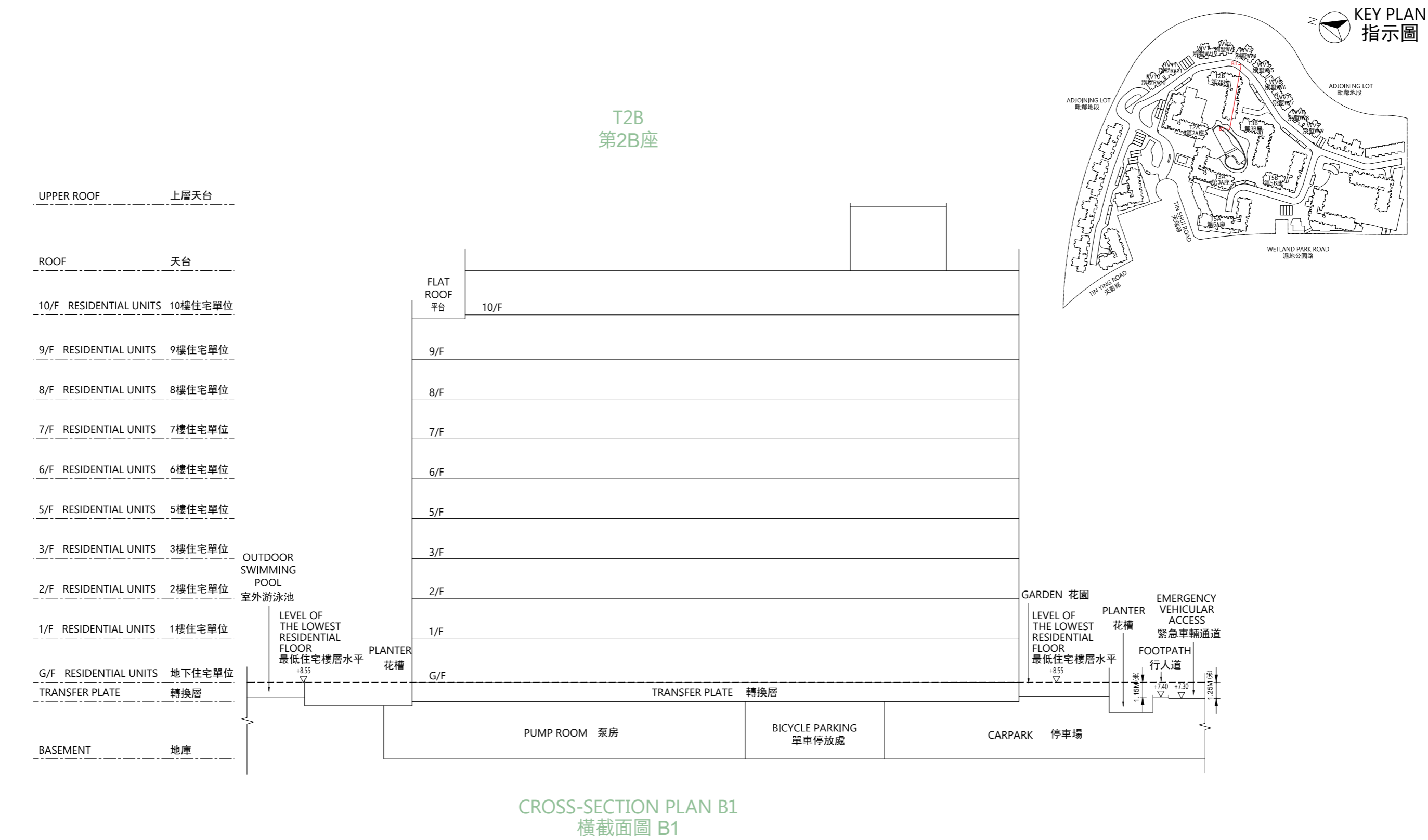
NOTES:

1. ▽ Denotes height (in metres) above the Hong Kong Principal Datum.
2. -- Dotted line denotes the level of the lowest residential floor of the building in the Phase.
3. The two parts of Emergency Vehicular Access adjacent to the building are both 7.30 metres above the Hong Kong Principal Datum.
4. The two parts of footpath adjacent to the building are both 7.40 metres above the Hong Kong Principal Datum.

備註：

1. ∇ 代表香港主水平基準以上的高度(米)。
2. -- 虛線代表期數中建築物之最低住宅樓層水平。
3. 毗連建築物的兩段緊急車輛通道均為香港主水平基準以上7.30米。
4. 毗連建築物的兩段行人道均為香港主水平基準以上7.40米。

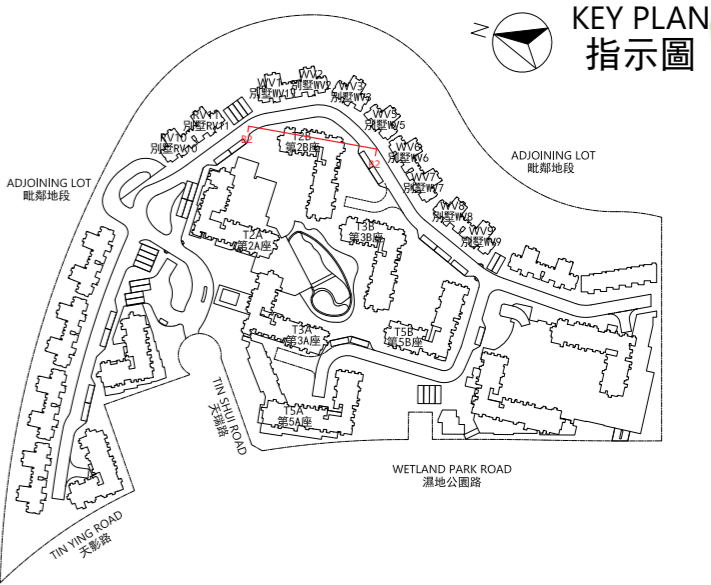
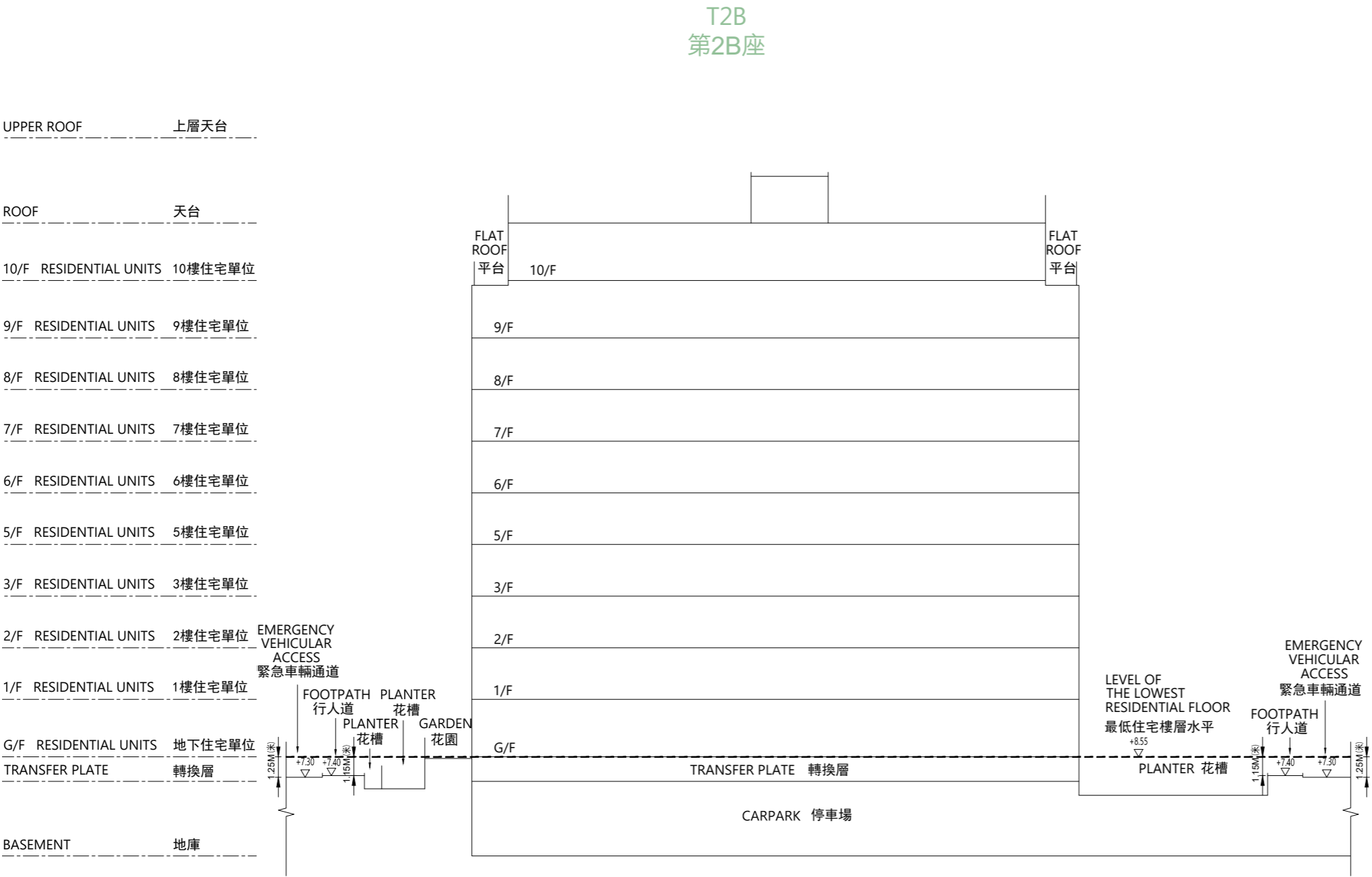
CROSS-SECTION PLAN OF BUILDING IN THE PHASE
期數中的建築物的橫截面圖



- NOTES:
- ▽ Denotes height (in metres) above the Hong Kong Principal Datum.
 - Dotted line denotes the level of the lowest residential floor of the building in the Phase.
 - The part of Emergency Vehicular Access adjacent to the building is 7.30 metres above the Hong Kong Principal Datum.
 - The part of footpath adjacent to the building is 7.40 metres above the Hong Kong Principal Datum.

- 備註：
- ▽ 代表香港主水平基準以上的高度(米)。
 - 虛線代表期數中建築物之最低住宅樓層水平。
 - 毗連建築物的一段緊急車輛通道為香港主水平基準以上7.30米。
 - 毗連建築物的一段行人道為香港主水平基準以上7.40米。

CROSS-SECTION PLAN OF BUILDING IN THE PHASE
期數中的建築物的橫截面圖



CROSS-SECTION PLAN B2
橫截面圖 B2

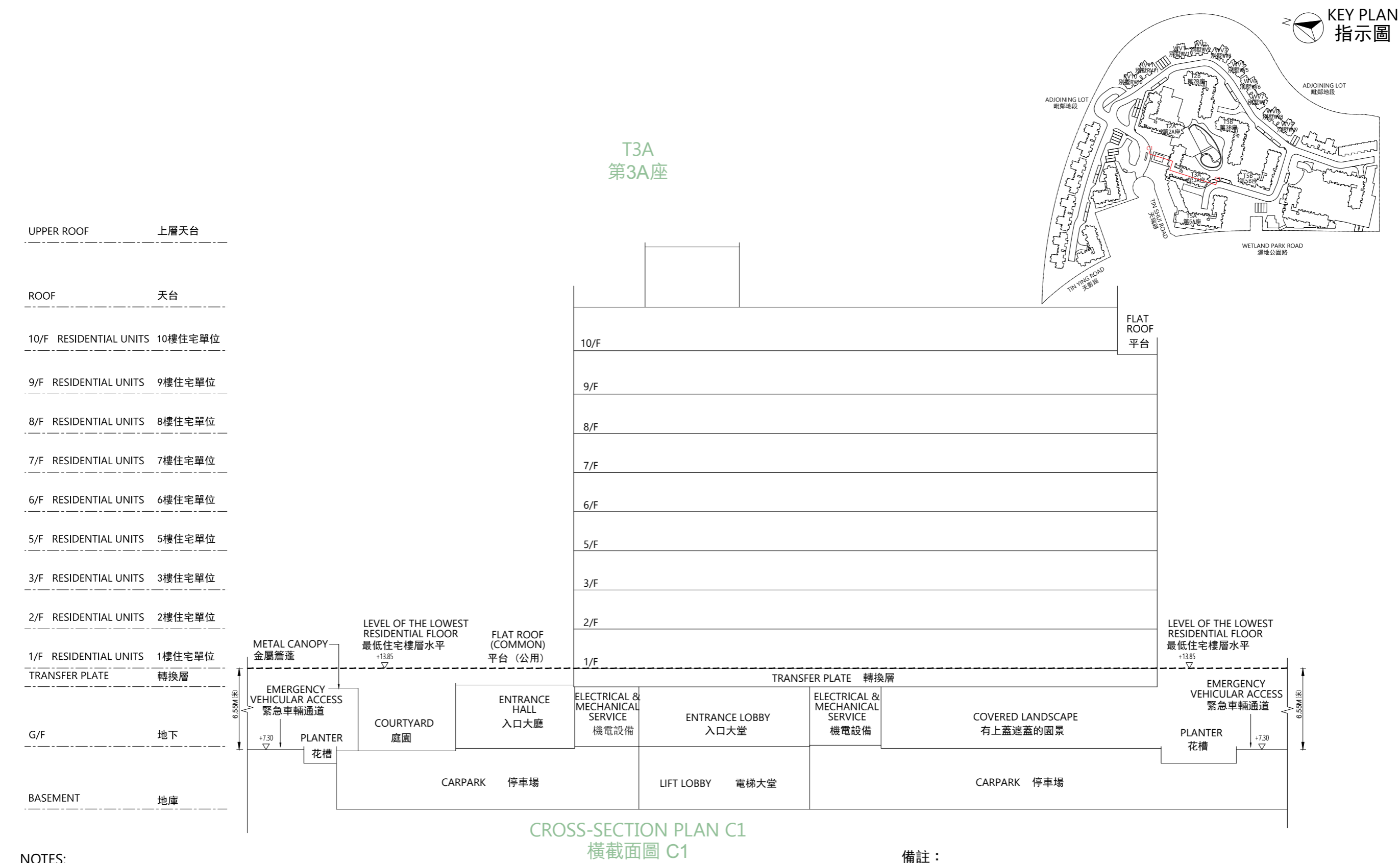
NOTES:

- ▽ Denotes height (in metres) above the Hong Kong Principal Datum.
- Dotted line denotes the level of the lowest residential floor of the building in the Phase.
- The two parts of Emergency Vehicular Access adjacent to the building are both 7.30 metres above the Hong Kong Principal Datum.
- The two parts of footpath adjacent to the building are both 7.40 metres above the Hong Kong Principal Datum.

備註：

- ▽ 代表香港主水平基準以上的高度(米)。
- 虛線代表期數中建築物之最低住宅樓層水平。
- 毗連建築物的兩段緊急車輛通道均為香港主水平基準以上7.30米。
- 毗連建築物的兩段行人道均為香港主水平基準以上7.40米。

CROSS-SECTION PLAN OF BUILDING IN THE PHASE 期數中的建築物的橫截面圖



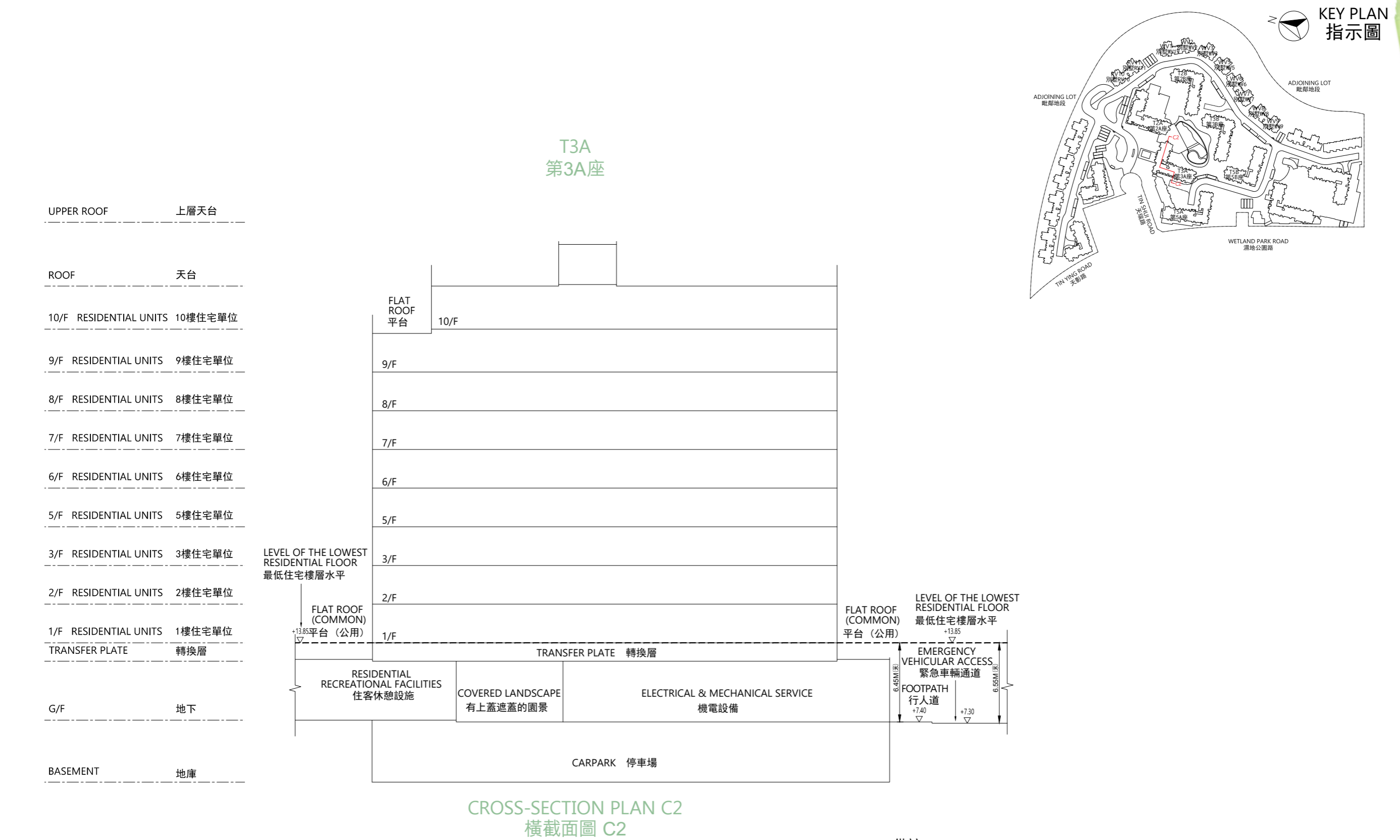
NOTES:

- 1. ▽ Denotes height (in metres) above the Hong Kong Principal Datum.
- 2. --Dotted line denotes the level of the lowest residential floor of the building in the Phase.
- 3. The two parts of Emergency Vehicular Access adjacent to the building area both 7.30 metres above the Hong Kong Principal Datum.

備註：

- 1. ▽ 代表香港主水平基準以上的高度(米)。
- 2. -- 虛線代表期數中建築物之最低住宅樓層水平。
- 3. 毗連建築物的兩段緊急車輛通道均為香港主水平基準以上7.30米。

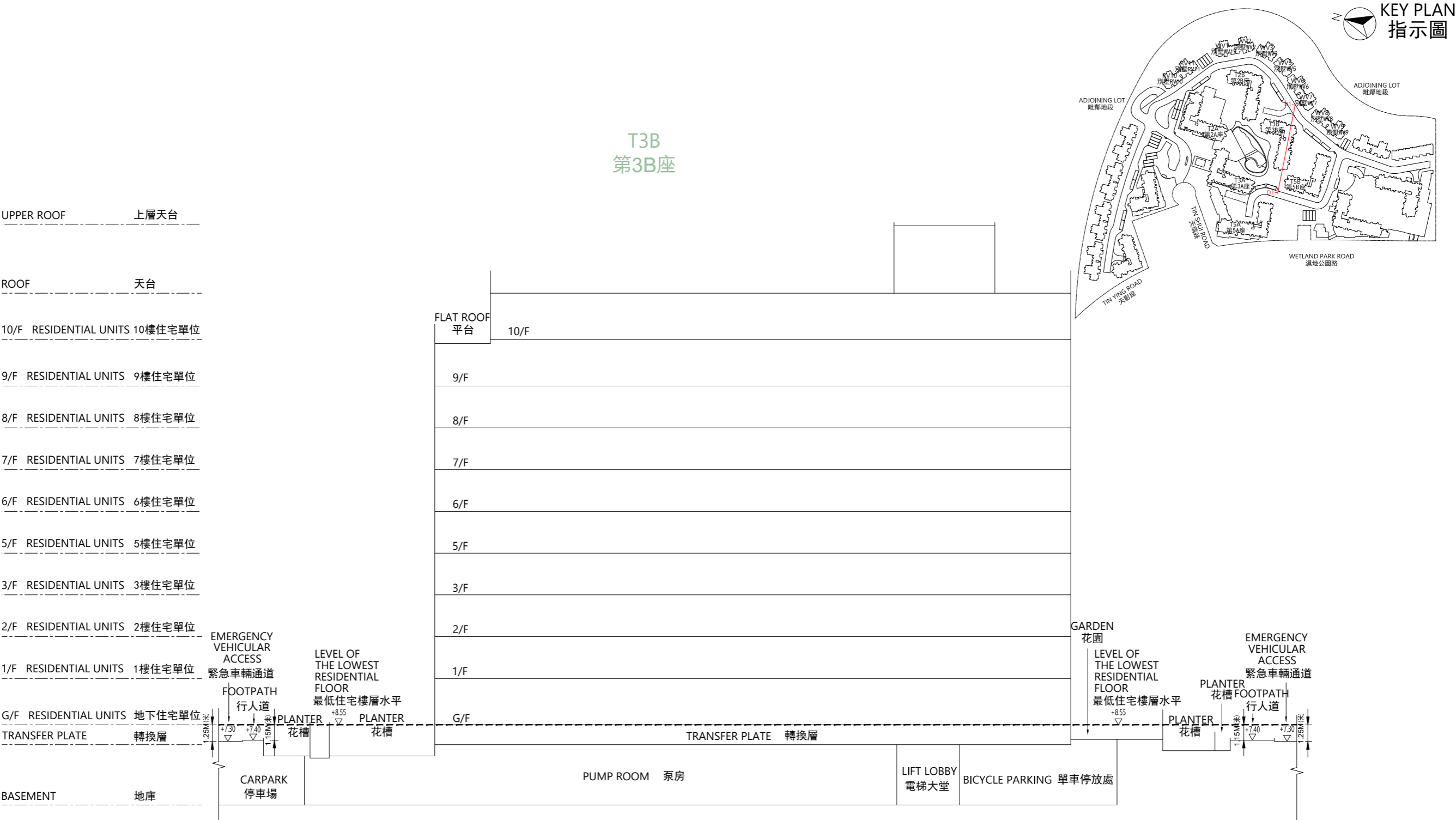
CROSS-SECTION PLAN OF BUILDING IN THE PHASE
期數中的建築物的橫截面圖



- NOTES:
- ▽ Denotes height (in metres) above the Hong Kong Principal Datum.
 - Dotted line denotes the level of the lowest residential floor of the building in the Phase.
 - The part of Emergency Vehicular Access adjacent to the building is 7.30 metres above the Hong Kong Principal Datum.
 - The part of footpath adjacent to the building is 7.40 metres above the Hong Kong Principal Datum.

- 備註：
- ▽ 代表香港主水平基準以上的高度(米)。
 - 虛線代表期數中建築物之最低住宅樓層水平。
 - 毗連建築物的一段緊急車輛通道為香港主水平基準以上7.30米。
 - 毗連建築物的一段行人道為香港主水平基準以上7.40米。

CROSS-SECTION PLAN OF BUILDING IN THE PHASE
期數中的建築物的橫截面圖



CROSS-SECTION PLAN D1
橫截面圖 D1

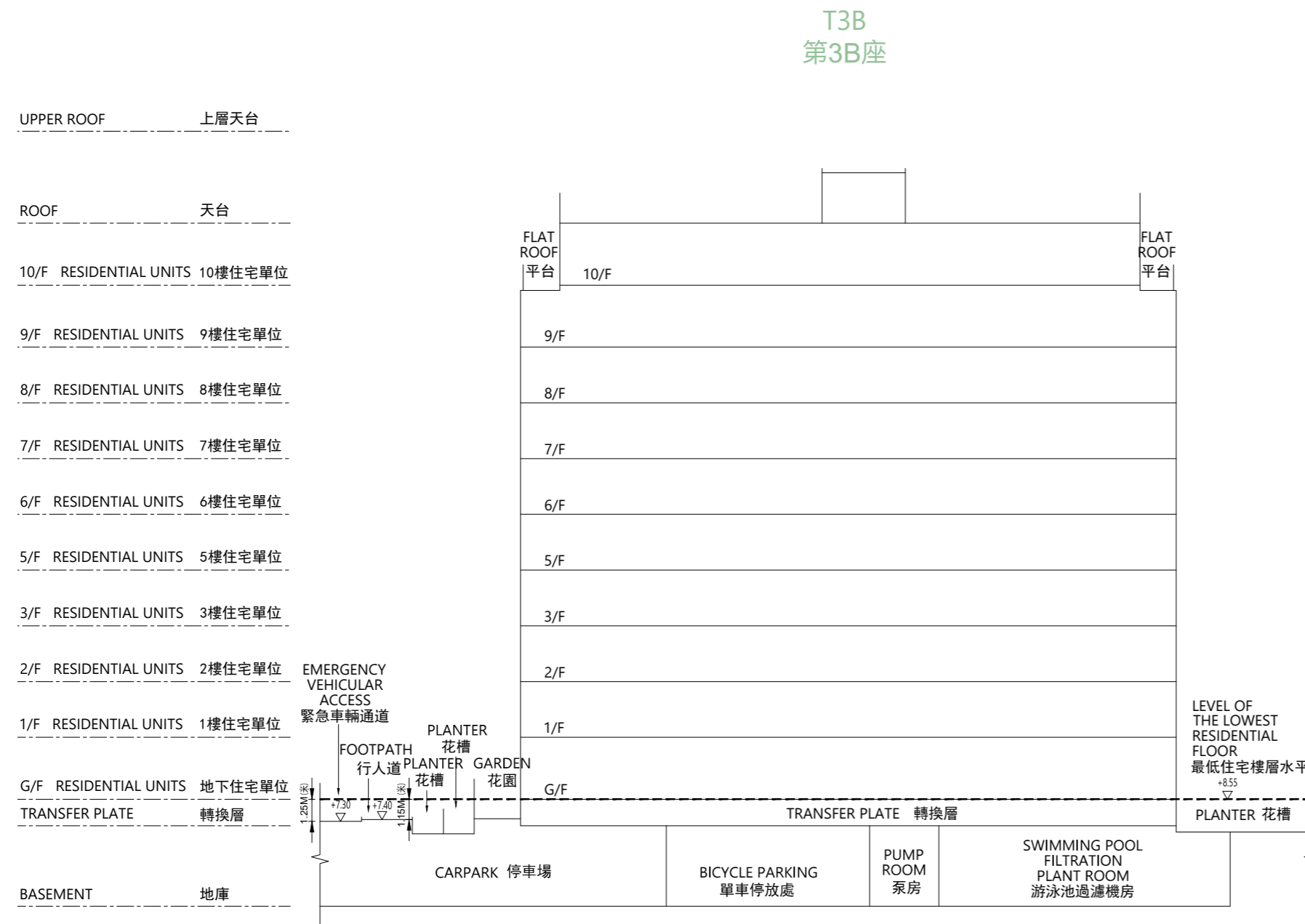
NOTES:

1. ▽ Denotes height (in metres) above the Hong Kong Principal Datum.
2. --Dotted line denotes the level of the lowest residential floor of the building in the Phase.
3. The two parts of Emergency Vehicular Access adjacent to the building are both 7.30 metres above the Hong Kong Principal Datum.
4. The two parts of footpath adjacent to the building are both 7.40 metres above the Hong Kong Principal Datum.

備註：

1. ▽ 代表香港主水平基準以上的高度(米)。
2. -- 虛線代表期數中建築物之最低住宅樓層水平。
3. 毗連建築物的兩段緊急車輛通道均為香港主水平基準以上7.30米。
4. 毗連建築物的兩段行人道均為香港主水平基準以上7.40米。

CROSS-SECTION PLAN OF BUILDING IN THE PHASE 期數中的建築物的橫截面圖



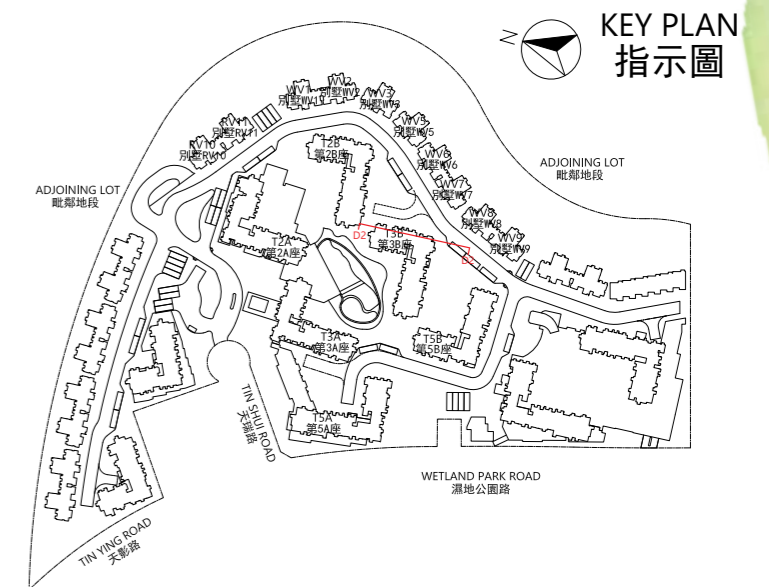
CROSS-SECTION PLAN D2
橫截面圖 D2

NOTES:

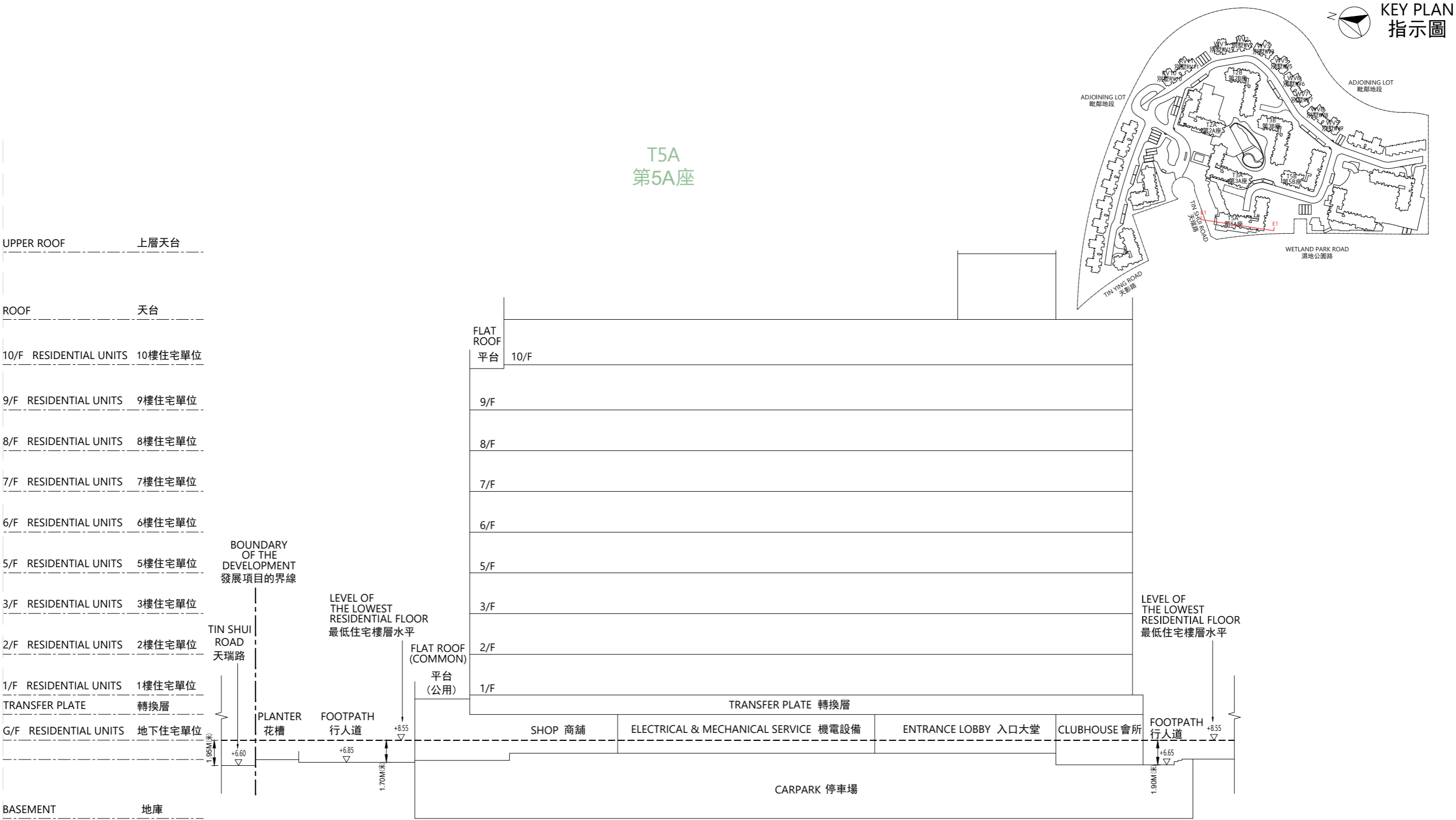
1. ▽ Denotes height (in metres) above the Hong Kong Principal Datum.
2. -- Dotted line denotes the level of the lowest residential floor of the building in the Phase.
3. The part of Emergency Vehicular Access adjacent to the building is 7.30 metres above the Hong Kong Principal Datum.
4. The part of footpath adjacent to the building is 7.40 metres above the Hong Kong Principal Datum.

備註：

1. ▽ 代表香港主水平基準以上的高度(米)。
2. -- 虛線代表期數中建築物之最低住宅樓層水平。
3. 毗連建築物的一段緊急車輛通道為香港主水平基準以上7.30米。
4. 毗連建築物的一段行人道為香港主水平基準以上7.40米。



CROSS-SECTION PLAN OF BUILDING IN THE PHASE
期數中的建築物的橫截面圖



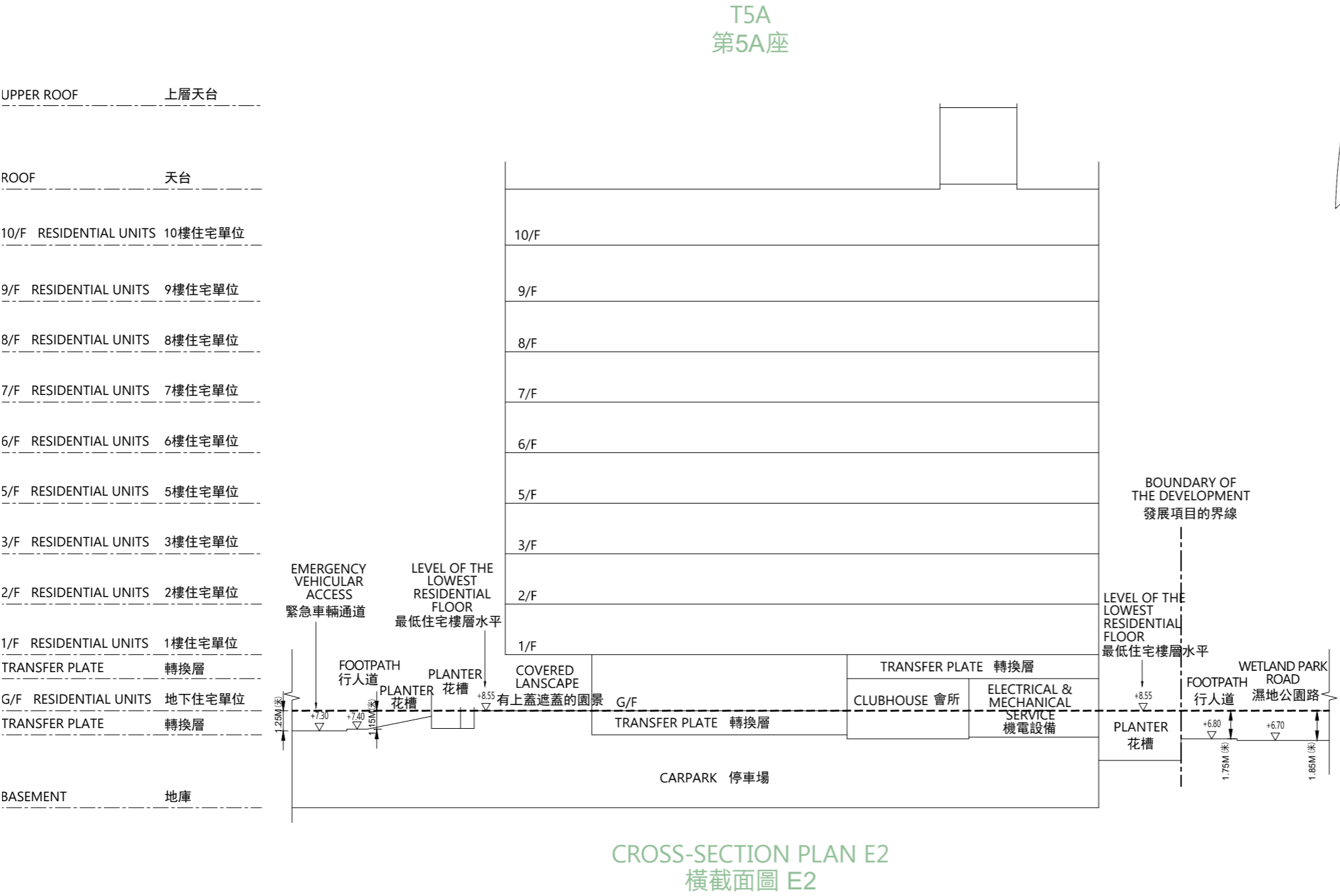
NOTES:

1. ▽ Denotes height (in metres) above the Hong Kong Principal Datum.
2. --Dotted line denotes the level of the lowest residential floor of the building in the Phase.
3. The part of Tin Shui Road adjacent to the building is 6.60 metres above the Hong Kong Principal Datum.
4. The two parts of footpath adjacent to the building are respectively 6.65 and 6.85 metres above the Hong Kong Principal Datum.

備註：

1. ▽ 代表香港主水平基準以上的高度(米)。
2. -- 虛線代表期數中建築物之最低住宅樓層水平。
3. 毗連建築物的一段天瑞路為香港主水平基準以上6. 60米。
4. 毗連建築物的兩段行人道分別為香港主水平基準以上6. 65及6. 85米。

CROSS-SECTION PLAN OF BUILDING IN THE PHASE
期數中的建築物的橫截面圖

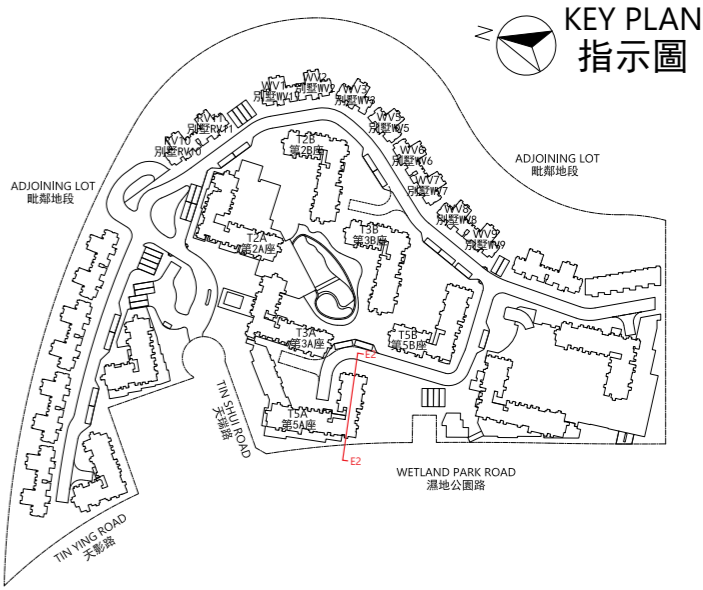


NOTES:

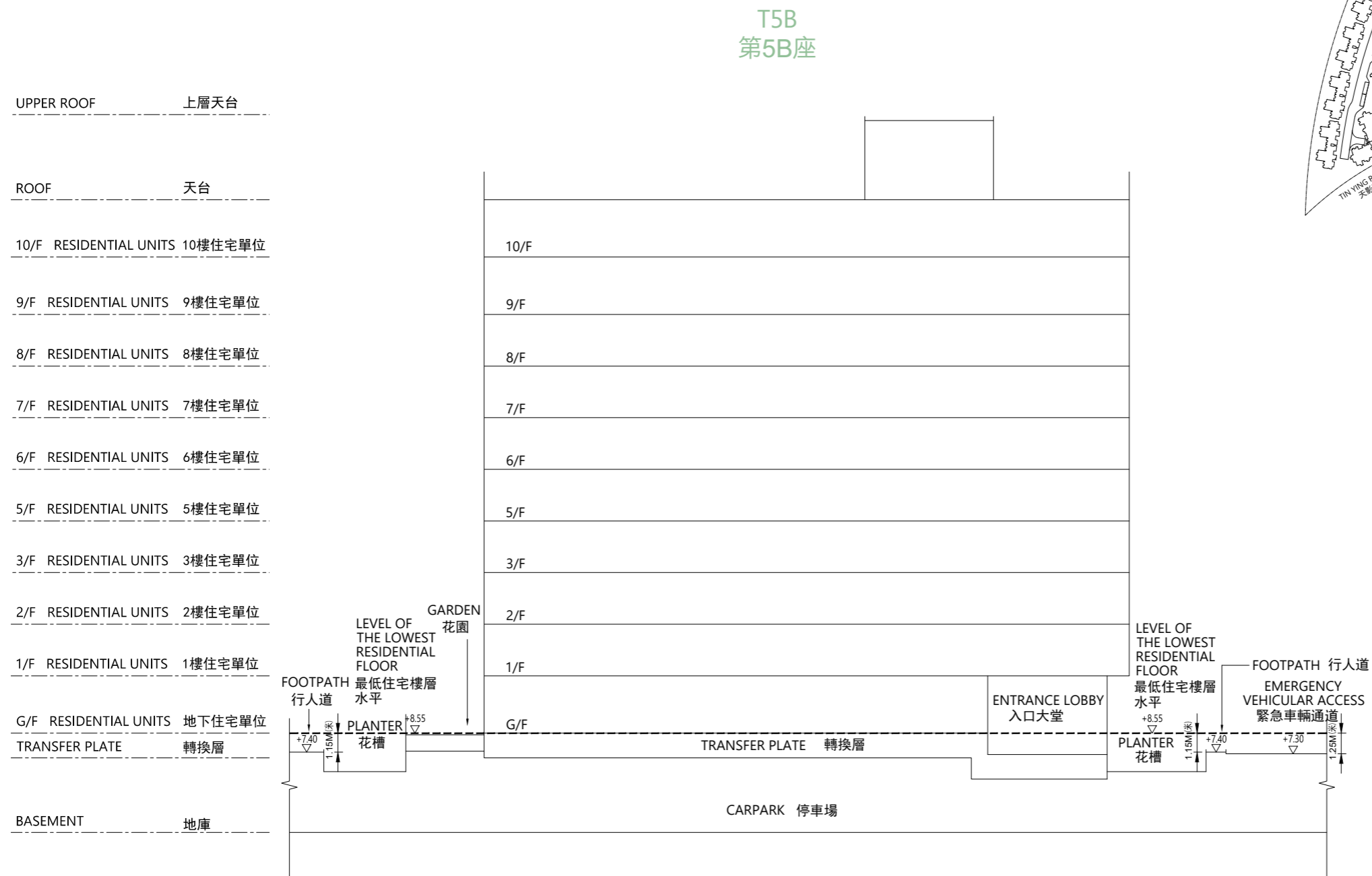
1. ▽ Denotes height (in metres) above the Hong Kong Principal Datum.
2. --Dotted line denotes the level of the lowest residential floor of the building in the Phase.
3. The part of Wetland Park Road adjacent to the building is 6.70 metres above the Hong Kong Principal Datum.
4. The part of Emergency Vehicular Access adjacent to the building is 7.30 metres above the Hong Kong Principal Datum.
5. The two parts of footpath adjacent to the building are respectively 6.80 and 7.40 metres above the Hong Kong Principal Datum.

備註：

1. ▽ 代表香港主水平基準以上的高度(米)。
2. -- 虛線代表期數中建築物之最低住宅樓層水平。
3. 毗連建築物的一段濕地公園路為香港主水平基準以上6.70米。
4. 毗連建築物的一段緊急車輛通道為香港主水平基準以上7.30米。
5. 毗連建築物的兩段行人道分別為香港主水平基準以上6.80及7.40米。



CROSS-SECTION PLAN OF BUILDING IN THE PHASE 期數中的建築物的橫截面圖



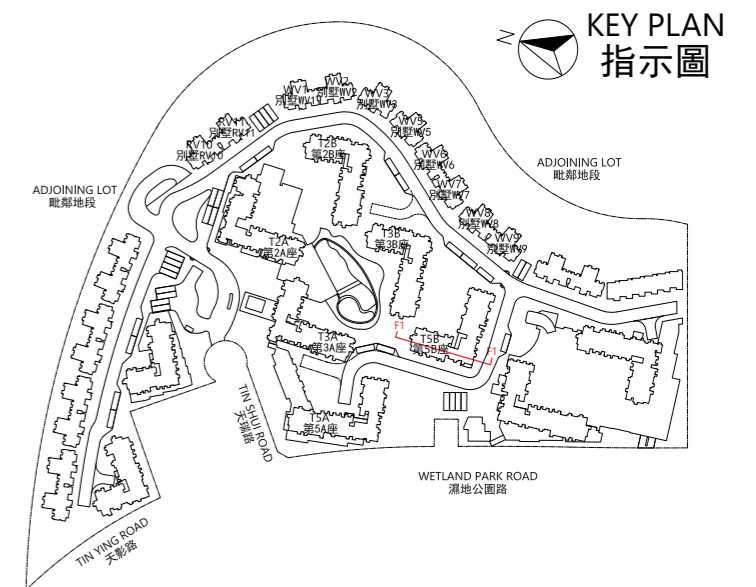
CROSS-SECTION PLAN F1
橫截面圖 F1

NOTES:

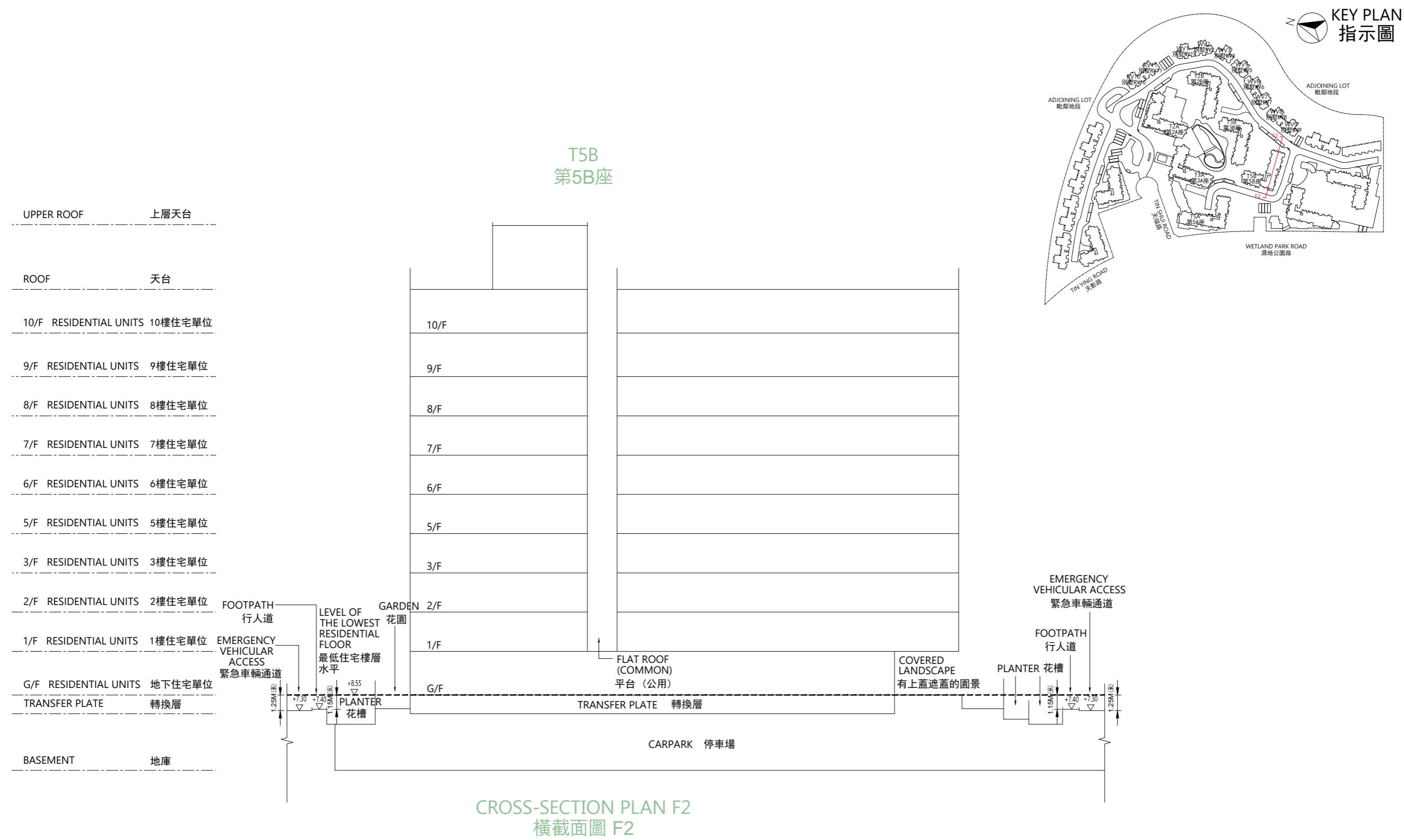
1. ▽ Denotes height (in metres) above the Hong Kong Principal Datum.
2. -- Dotted line denotes the level of the lowest residential floor of the building in the Phase.
3. The part of Emergency Vehicular Access adjacent to the building is 7.30 metres above the Hong Kong Principal Datum.
4. The two parts of Footpath adjacent to the building are both 7.40 metres above the Hong Kong Principal Datum.

備註：

1. ▽ 代表香港主水平基準以上的高度(米)。
2. -- 虛線代表期數中建築物之最低住宅樓層水平。
3. 毗連建築物的一段緊急車輛通道為香港主水平基準以上7.30米。
4. 毗連建築物的兩段行人道均為香港主水平基準以上7.40米。



CROSS-SECTION PLAN OF BUILDING IN THE PHASE
期數中的建築物的橫截面圖



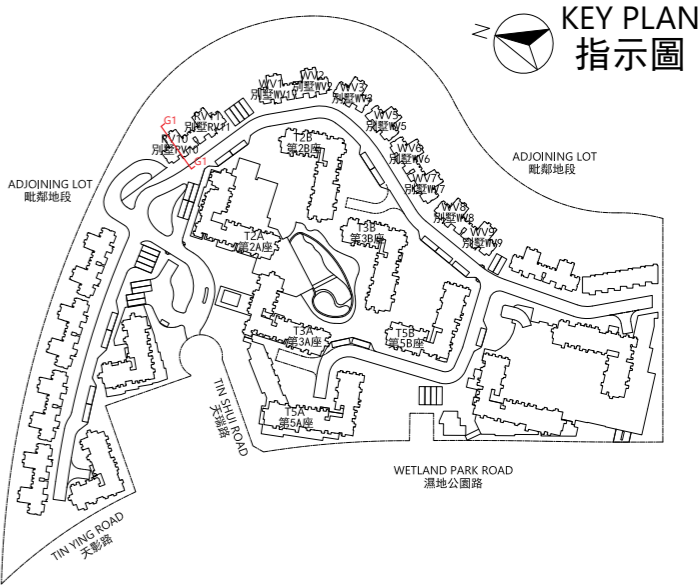
NOTES:

1. ▽ Denotes height (in metres) above the Hong Kong Principal Datum.
2. -- Dotted line denotes the level of the lowest residential floor of the building in the Phase.
3. The two parts of Emergency Vehicular Access adjacent to the building are both 7.30 metres above the Hong Kong Principal Datum.
4. The two parts of Footpath adjacent to the building are both 7.40 metres above the Hong Kong Principal Datum.

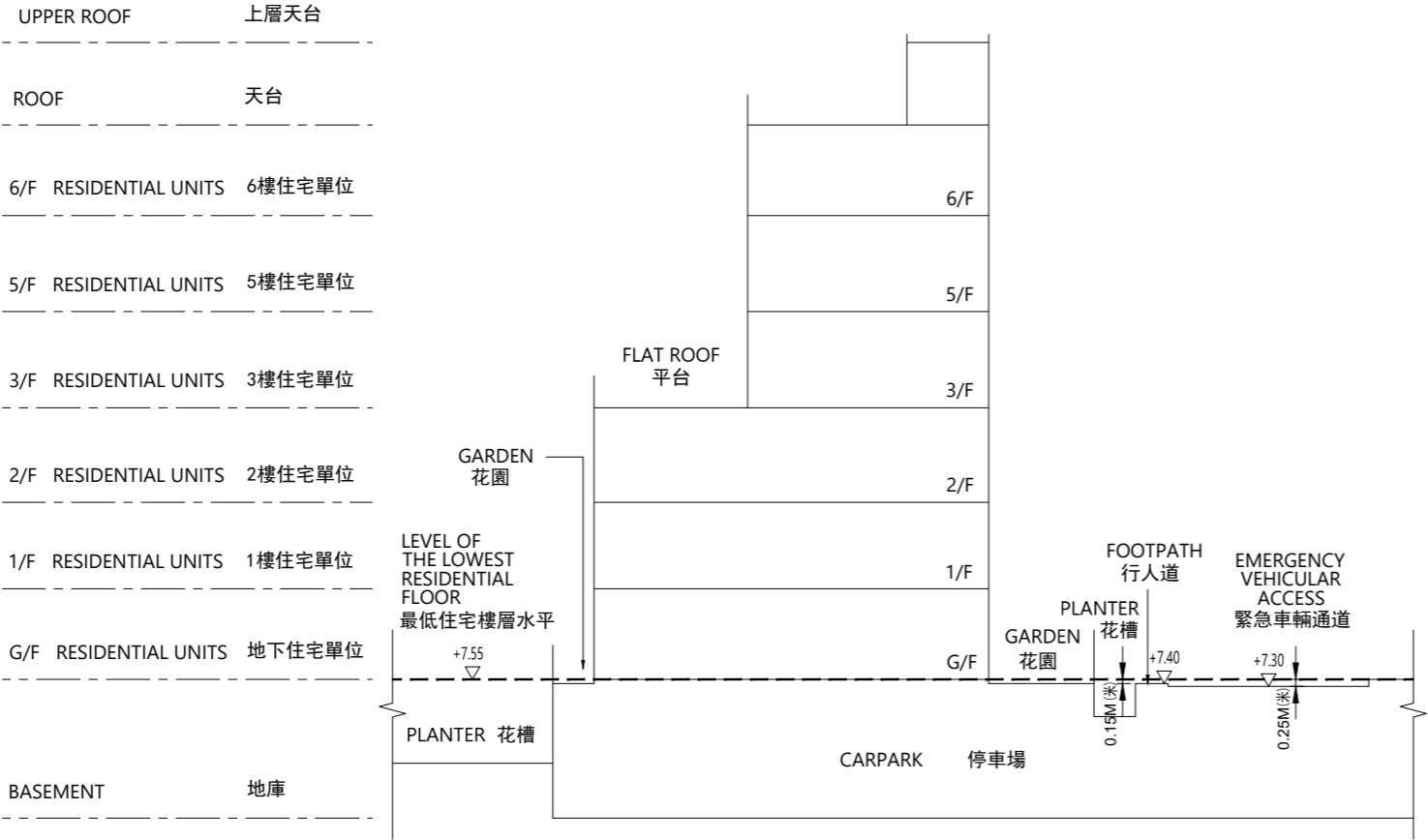
備註：

1. ▽ 代表香港主水平基準以上的高度(米)。
2. -- 虛線代表期數中建築物之最低住宅樓層水平。
3. 毗連建築物的兩段緊急車輛通道均為香港主水平基準以上7.30米。
4. 毗連建築物的兩段行人道均為香港主水平基準以上7.40米。

CROSS-SECTION PLAN OF BUILDING IN THE PHASE
期數中的建築物的橫截面圖



RV10
別墅RV10

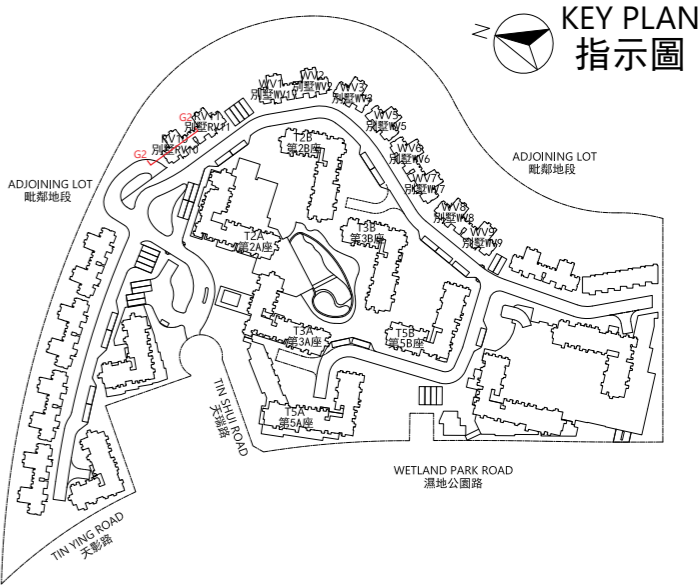


CROSS-SECTION PLAN G1
橫截面圖 G1

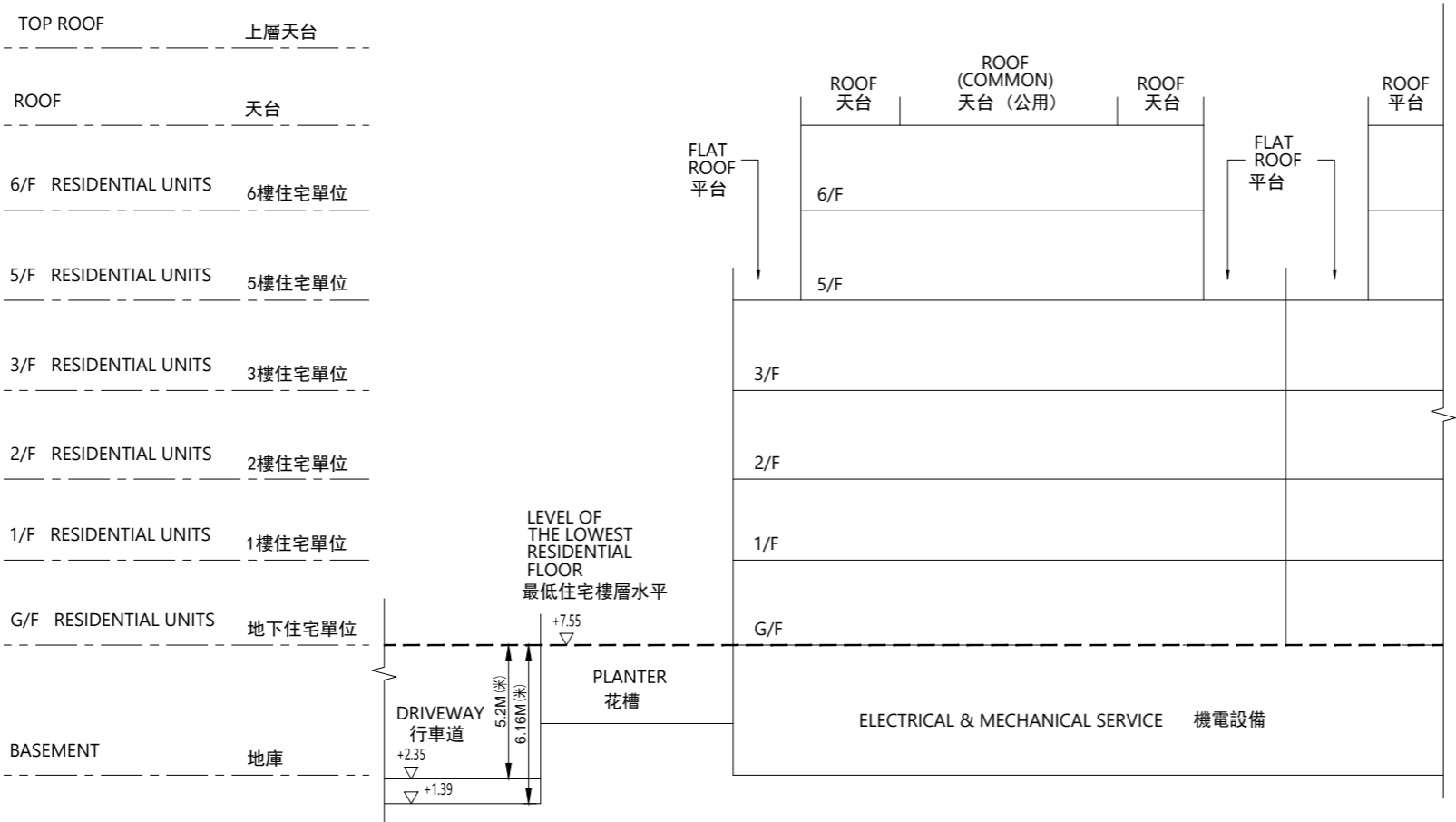
- NOTES:
- 1. ▽ Denotes height (in metres) above the Hong Kong Principal Datum.
 - 2. --Dotted line denotes the level of the lowest residential floor of the building in the Phase.
 - 3. The part of Emergency Vehicular Access adjacent to the building is 7.30 metres above the Hong Kong Principal Datum.
 - 4. The part of footpath adjacent to the building is 7.40 metres above the Hong Kong Principal Datum.

- 備註：
- 1. ▽ 代表香港主水平基準以上的高度(米)。
 - 2. -- 虛線代表期數中建築物之最低住宅樓層水平。
 - 3. 毗連建築物的一段緊急車輛通道為香港主水平基準以上7.30米。
 - 4. 毗連建築物的一段行人道為香港主水平基準以上7.40米。

CROSS-SECTION PLAN OF BUILDING IN THE PHASE
期數中的建築物的橫截面圖



RV10
別墅RV10



CROSS-SECTION PLAN G2
橫截面圖 G2

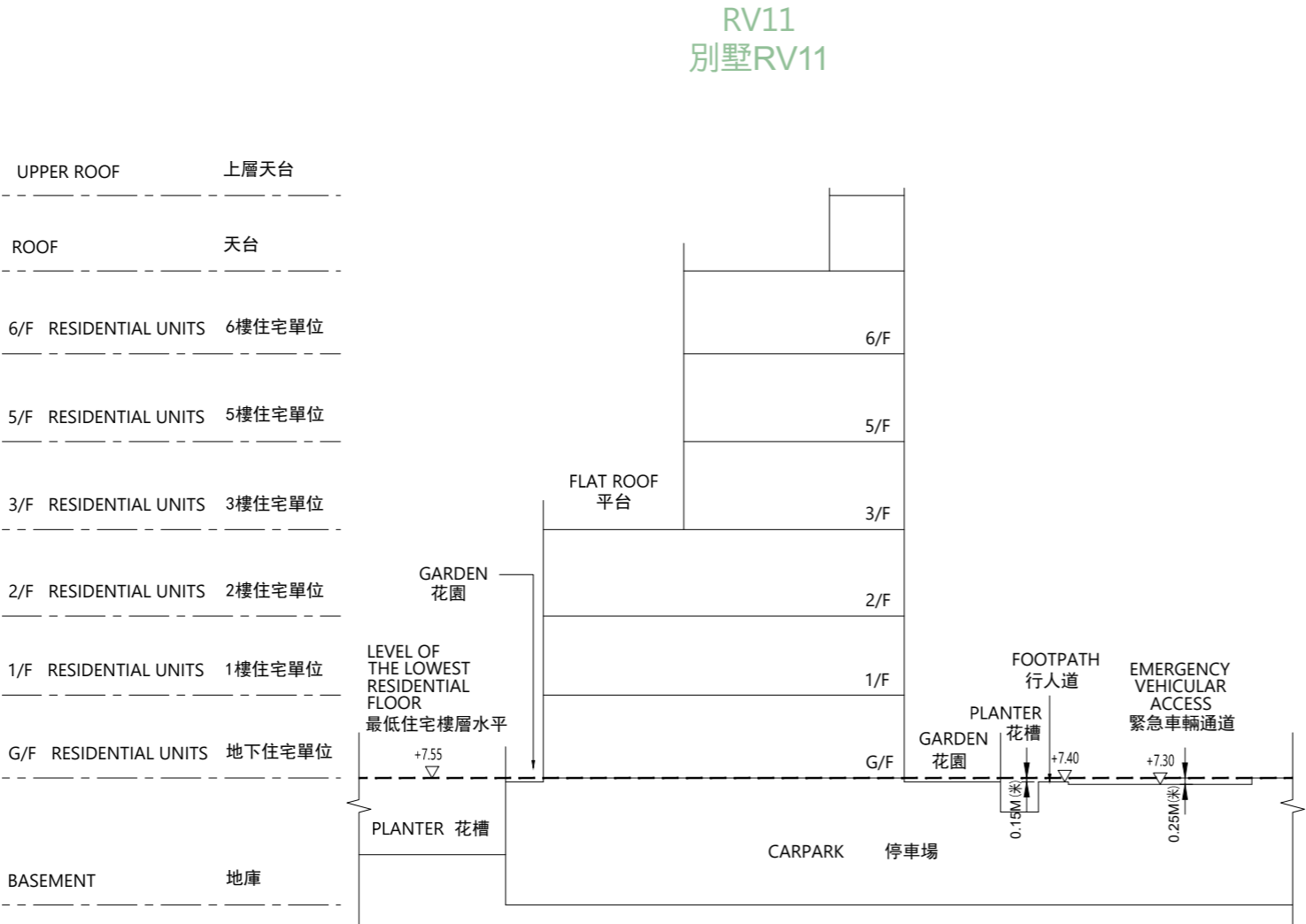
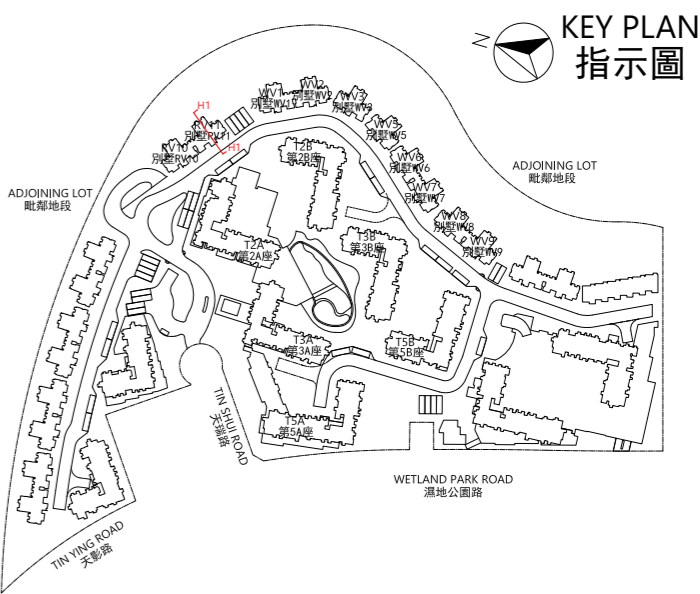
NOTES:

- 1. ▽ Denotes height (in metres) above the Hong Kong Principal Datum.
- 2. -- Dotted line denotes the level of the lowest residential floor of the building in the Phase.
- 3. The part of driveway adjacent to the building is 1.39 to 2.35 metres above the Hong Kong Principal Datum.

備註：

- 1. ▽ 代表香港主水平基準以上的高度(米)。
- 2. -- 虛線代表期數中建築物之最低住宅樓層水平。
- 3. 毗連建築物的一段行車道為香港主水平基準以上1.39至2.35米。

CROSS-SECTION PLAN OF BUILDING IN THE PHASE
期數中的建築物的橫截面圖

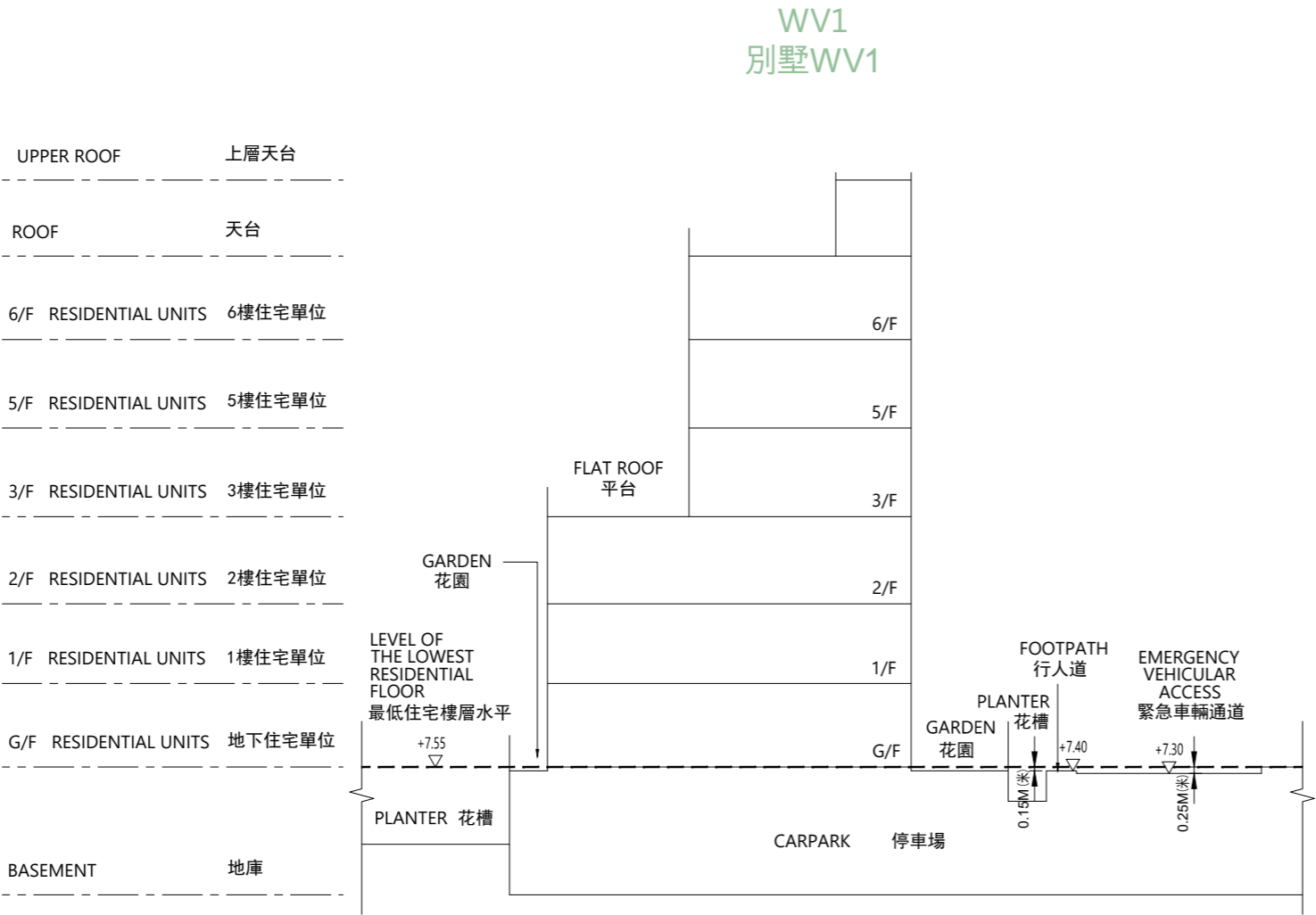
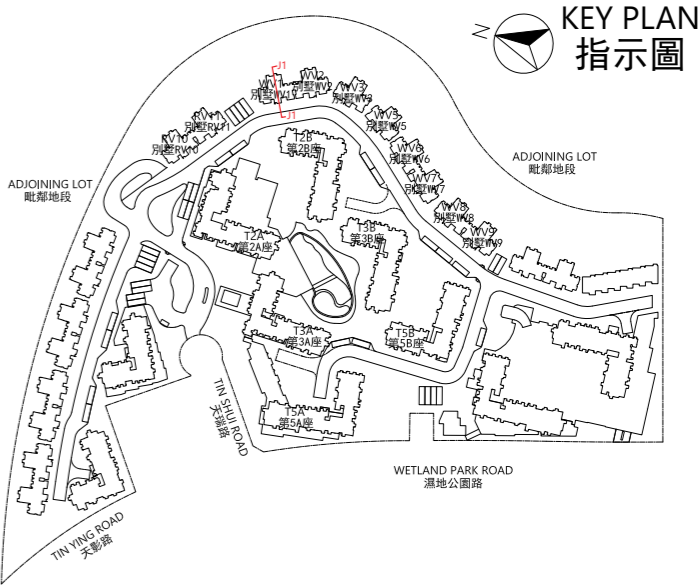


CROSS-SECTION PLAN H1
橫截面圖 H1

- NOTES:
- ▽ Denotes height (in metres) above the Hong Kong Principal Datum.
 - Dotted line denotes the level of the lowest residential floor of the building in the Phase.
 - The part of Emergency Vehicular Access adjacent to the building is 7.30 metres above the Hong Kong Principal Datum.
 - The part of footpath adjacent to the building is 7.40 metres above the Hong Kong Principal Datum.

- 備註：
- ▽ 代表香港主水平基準以上的高度(米)。
 - 虛線代表期數中建築物之最低住宅樓層水平。
 - 毗連建築物的一段緊急車輛通道為香港主水平基準以上7.30米。
 - 毗連建築物的一段行人道為香港主水平基準以上7.40米。

CROSS-SECTION PLAN OF BUILDING IN THE PHASE
期數中的建築物的橫截面圖



CROSS-SECTION PLAN J1
橫截面圖 J1

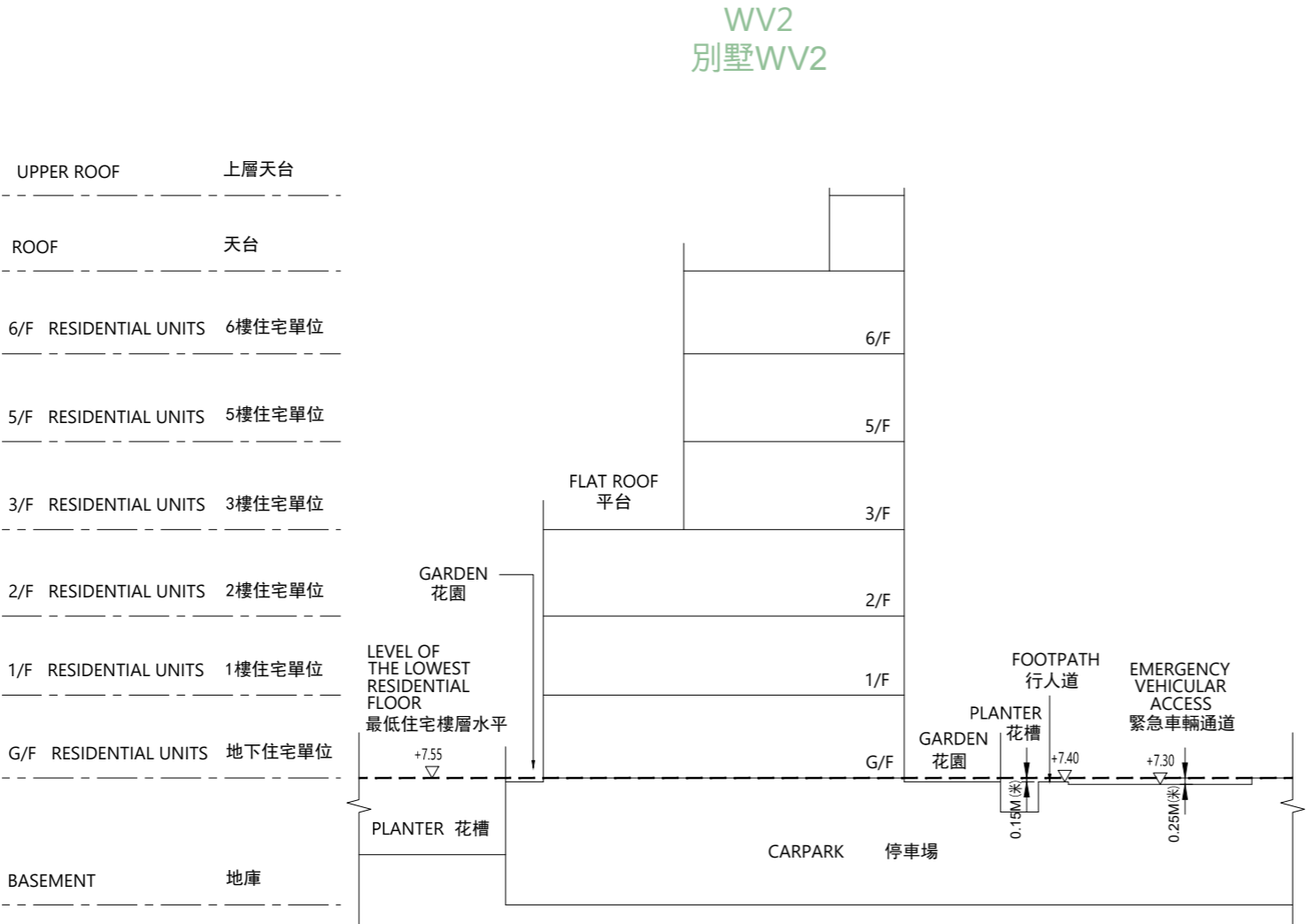
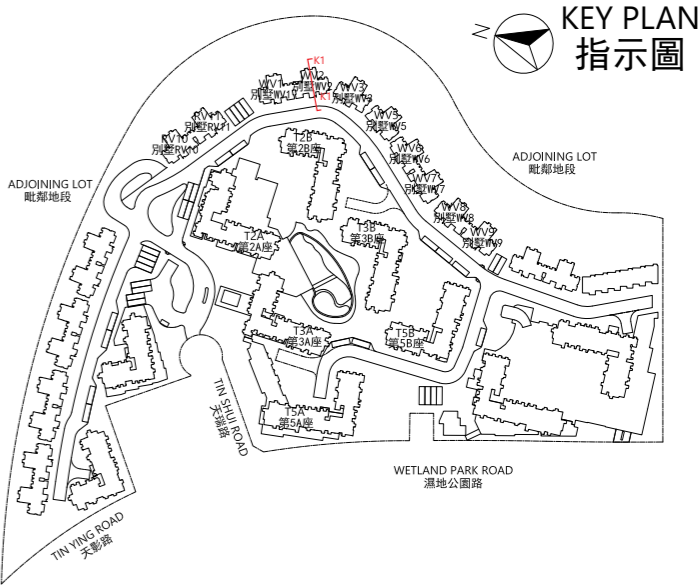
NOTES:

1. ▽ Denotes height (in metres) above the Hong Kong Principal Datum.
2. --- Dotted line denotes the level of the lowest residential floor of the building in the Phase.
3. The part of Emergency Vehicular Access adjacent to the building is 7.30 metres above the Hong Kong Principal Datum.
4. The part of footpath adjacent to the building is 7.40 metres above the Hong Kong Principal Datum.

備註：

1. ▽ 代表香港主水平基準以上的高度(米)。
2. --- 虛線代表期數中建築物之最低住宅樓層水平。
3. 毗連建築物的一段緊急車輛通道為香港主水平基準以上7.30米。
4. 毗連建築物的一段行人道為香港主水平基準以上7.40米。

CROSS-SECTION PLAN OF BUILDING IN THE PHASE
期數中的建築物的橫截面圖



CROSS-SECTION PLAN K1
橫截面圖 K1

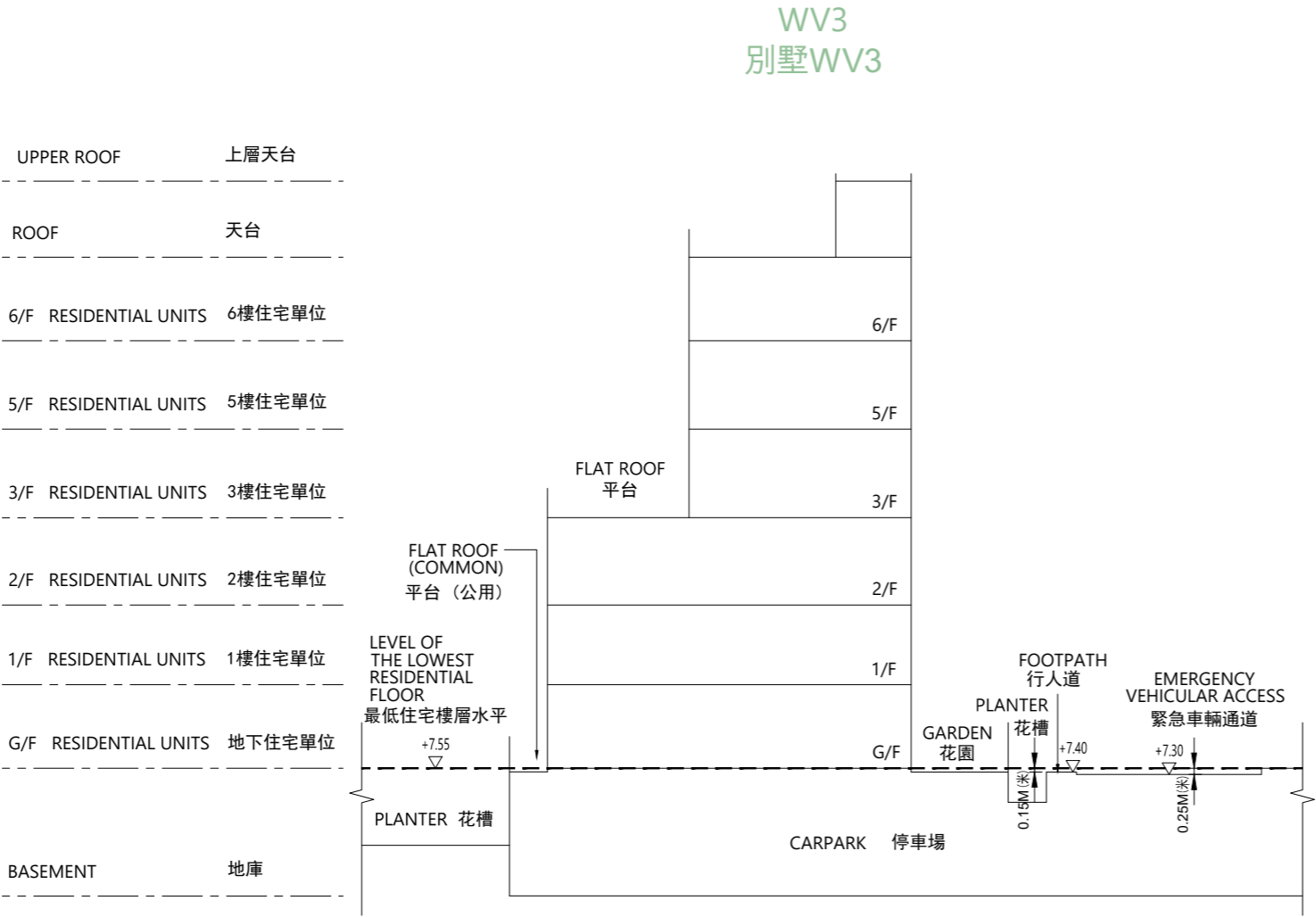
NOTES:

1. ▽ Denotes height (in metres) above the Hong Kong Principal Datum.
2. --Dotted line denotes the level of the lowest residential floor of the building in the Phase.
3. The part of Emergency Vehicular Access adjacent to the building is 7.30 metres above the Hong Kong Principal Datum.
4. The part of footpath adjacent to the building is 7.40 metres above the Hong Kong Principal Datum.

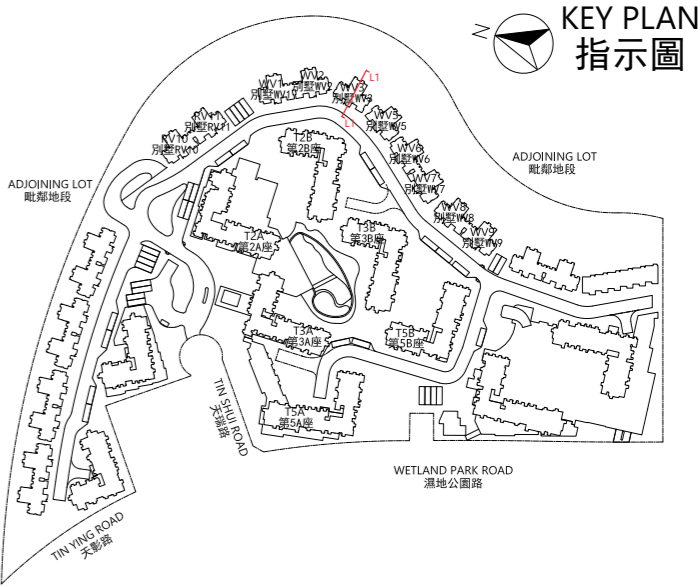
備註：

1. ▽ 代表香港主水平基準以上的高度(米)。
2. -- 虛線代表期數中建築物之最低住宅樓層水平。
3. 毗連建築物的一段緊急車輛通道為香港主水平基準以上7.30米。
4. 毗連建築物的一段行人道為香港主水平基準以上7.40米。

CROSS-SECTION PLAN OF BUILDING IN THE PHASE
期數中的建築物的橫截面圖



CROSS-SECTION PLAN L1
橫截面圖 L1



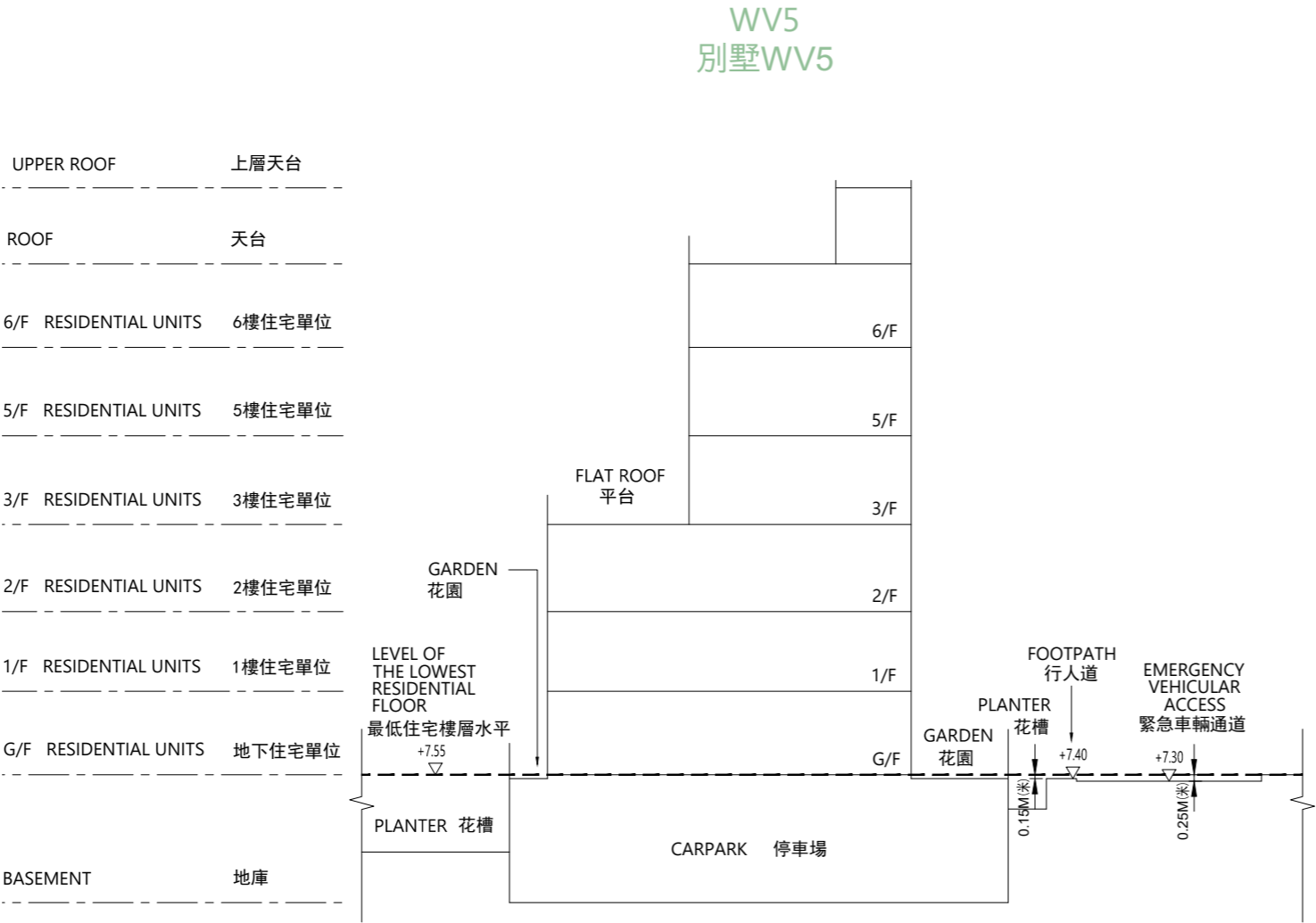
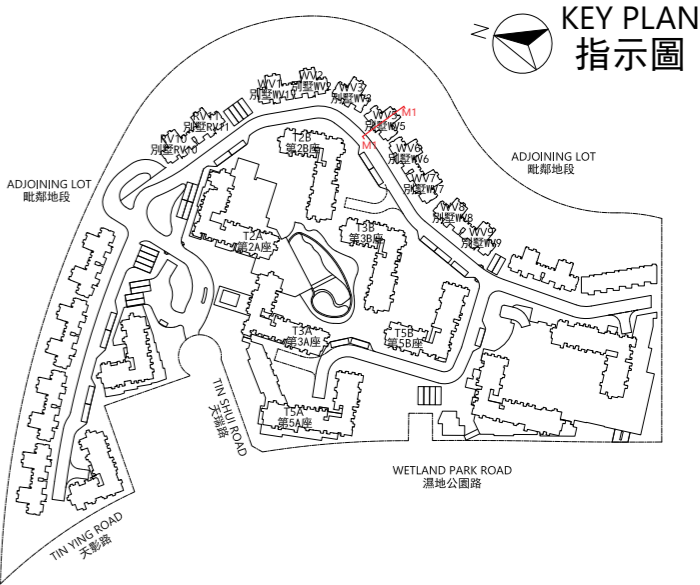
NOTES:

1. ▽ Denotes height (in metres) above the Hong Kong Principal Datum.
2. --- Dotted line denotes the level of the lowest residential floor of the building in the Phase.
3. The part of Emergency Vehicular Access adjacent to the building is 7.30 metres above the Hong Kong Principal Datum.
4. The part of footpath adjacent to the building is 7.40 metres above the Hong Kong Principal Datum.

備註：

1. ▽ 代表香港主水平基準以上的高度(米)。
2. --- 虛線代表期數中建築物之最低住宅樓層水平。
3. 毗連建築物的一段緊急車輛通道為香港主水平基準以上7.30米。
4. 毗連建築物的一段行人道為香港主水平基準以上7.40米。

CROSS-SECTION PLAN OF BUILDING IN THE PHASE
期數中的建築物的橫截面圖

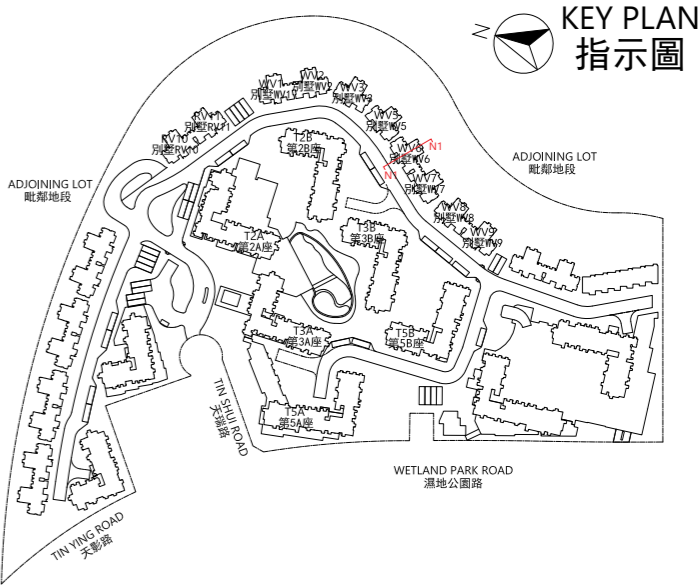


CROSS-SECTION PLAN M1
橫截面圖 M1

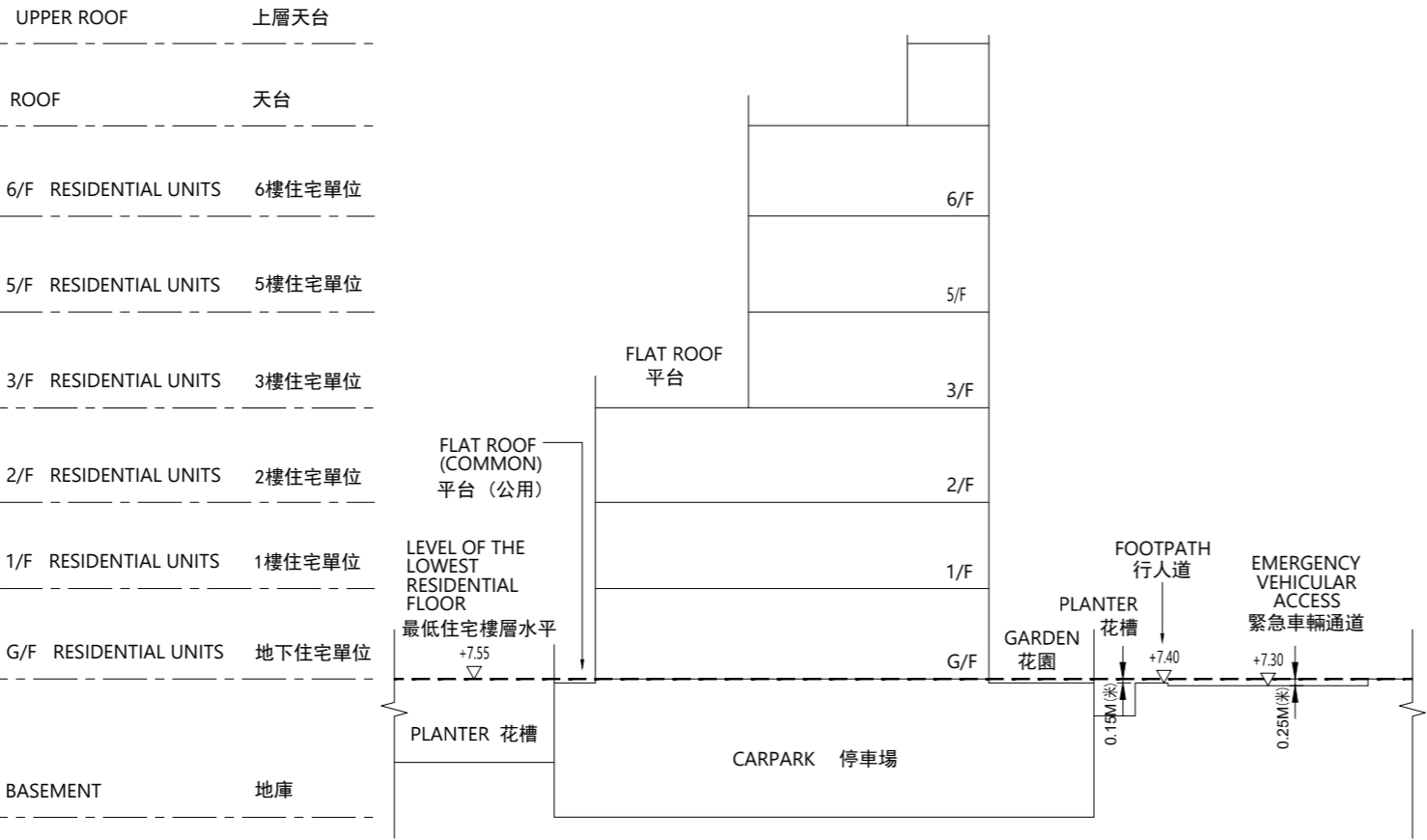
- NOTES:
1. ∇ Denotes height (in metres) above the Hong Kong Principal Datum.
 2. --Dotted line denotes the level of the lowest residential floor of the building in the Phase.
 3. The part of Emergency Vehicular Access adjacent to the building is 7.30 metres above the Hong Kong Principal Datum.
 4. The part of footpath adjacent to the building is 7.40 metres above the Hong Kong Principal Datum.

- 備註：
1. ∇ 代表香港主水平基準以上的高度(米)。
 2. -- 虛線代表期數中建築物之最低住宅樓層水平。
 3. 毗連建築物的一段緊急車輛通道為香港主水平基準以上7.30米。
 4. 毗連建築物的一段行人道為香港主水平基準以上7.40米。

CROSS-SECTION PLAN OF BUILDING IN THE PHASE
期數中的建築物的橫截面圖



WV6
別墅WV6



CROSS-SECTION PLAN N1
橫截面圖 N1

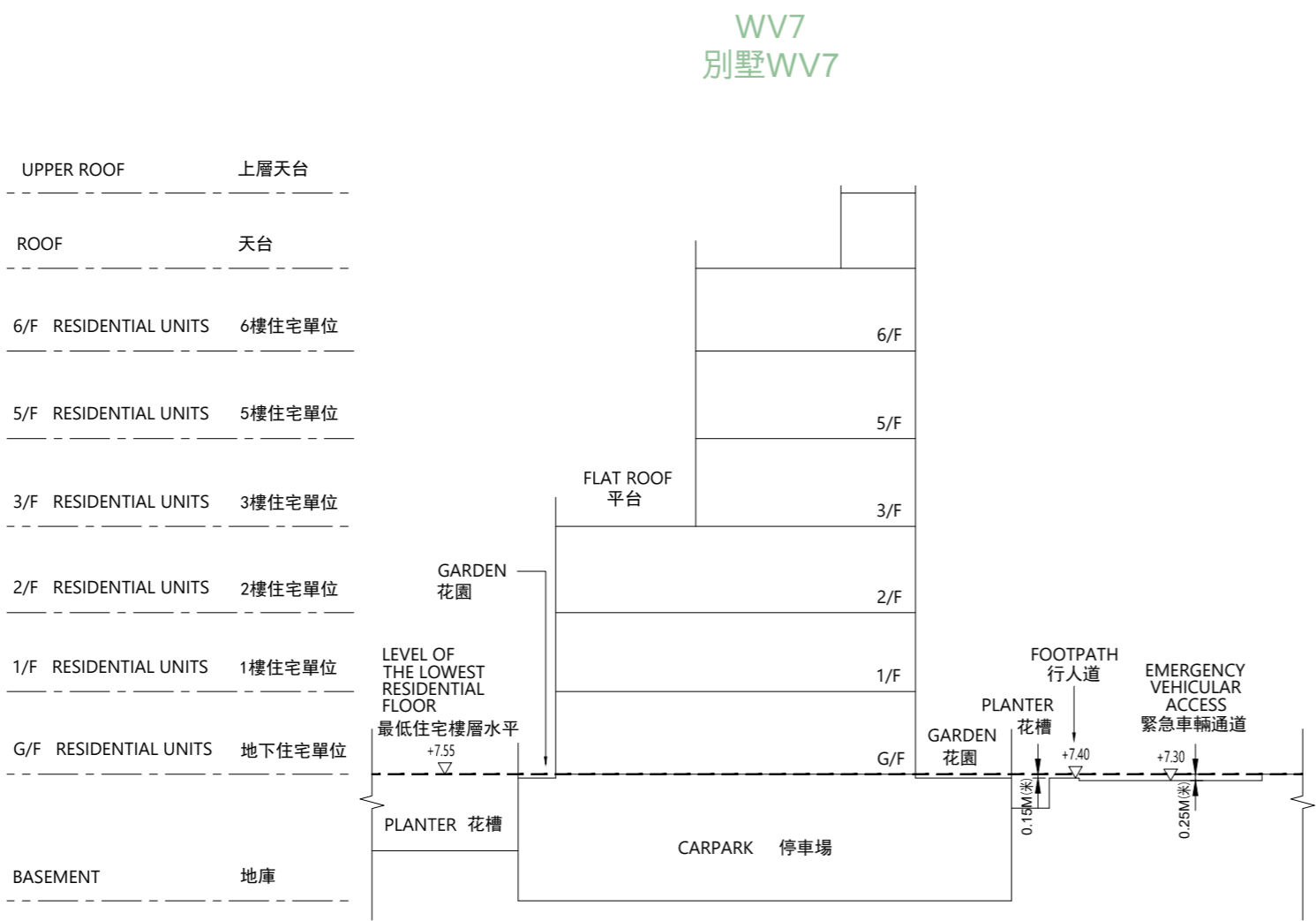
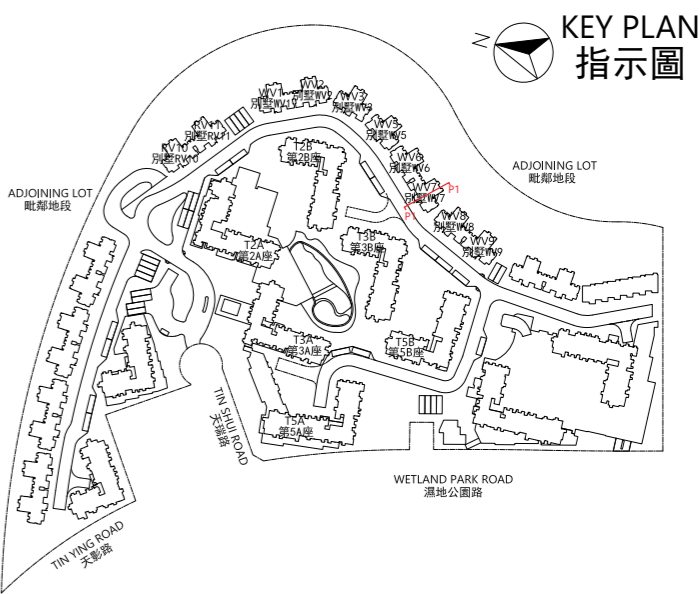
NOTES:

1. ▽ Denotes height (in metres) above the Hong Kong Principal Datum.
2. --- Dotted line denotes the level of the lowest residential floor of the building in the Phase.
3. The part of Emergency Vehicular Access adjacent to the building is 7.30 metres above the Hong Kong Principal Datum.
4. The part of footpath adjacent to the building is 7.40 metres above the Hong Kong Principal Datum.

備註：

1. ▽ 代表香港主水平基準以上的高度(米)。
2. --- 虛線代表期數中建築物之最低住宅樓層水平。
3. 毗連建築物的一段緊急車輛通道為香港主水平基準以上7.30米。
4. 毗連建築物的一段行人道為香港主水平基準以上7.40米。

CROSS-SECTION PLAN OF BUILDING IN THE PHASE
期數中的建築物的橫截面圖



CROSS-SECTION PLAN P1
橫截面圖 P1

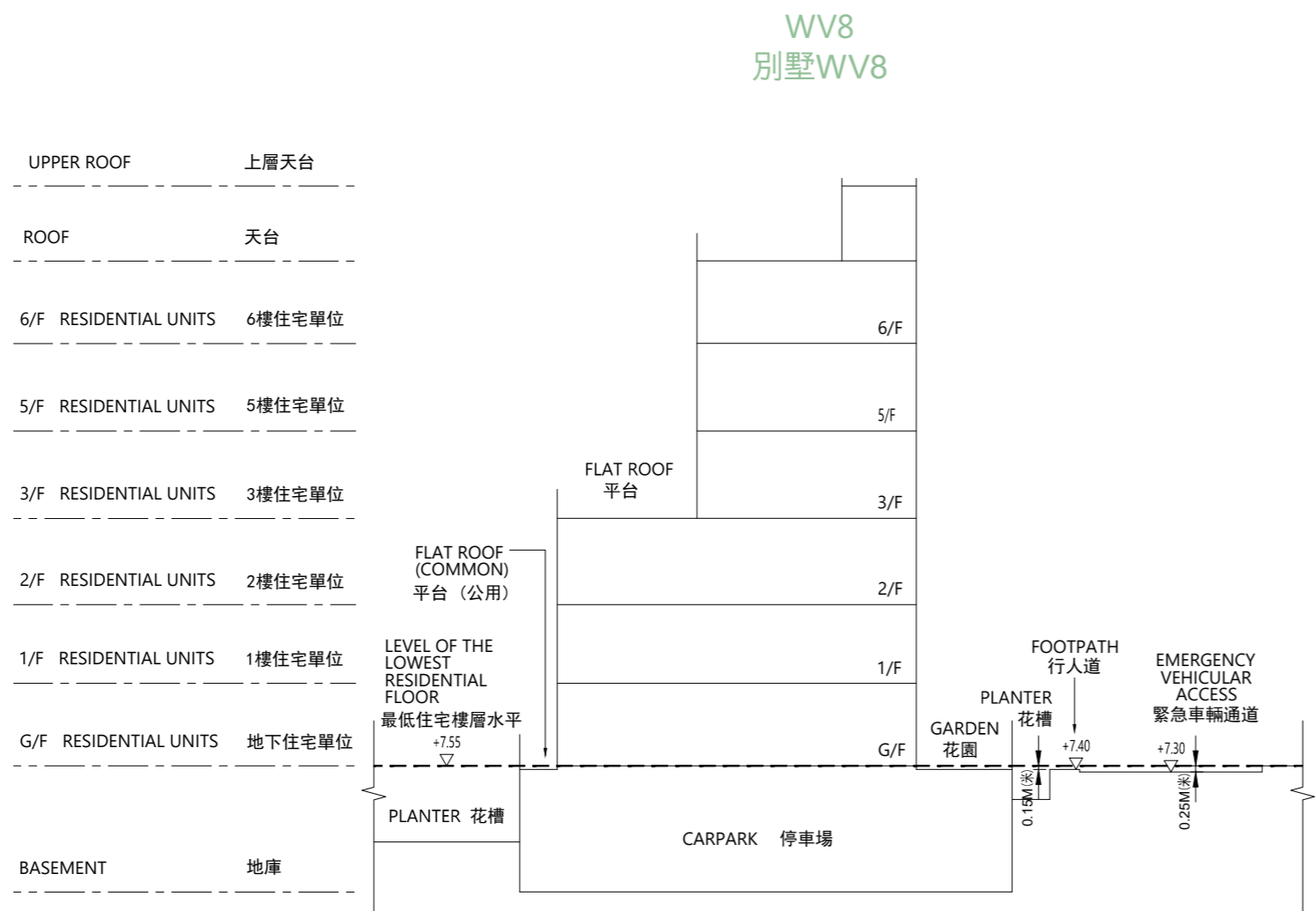
NOTES:

1. ▽ Denotes height (in metres) above the Hong Kong Principal Datum.
2. --Dotted line denotes the level of the lowest residential floor of the building in the Phase.
3. The part of Emergency Vehicular Access adjacent to the building is 7.30 metres above the Hong Kong Principal Datum.
4. The part of footpath adjacent to the building is 7.40 metres above the Hong Kong Principal Datum.

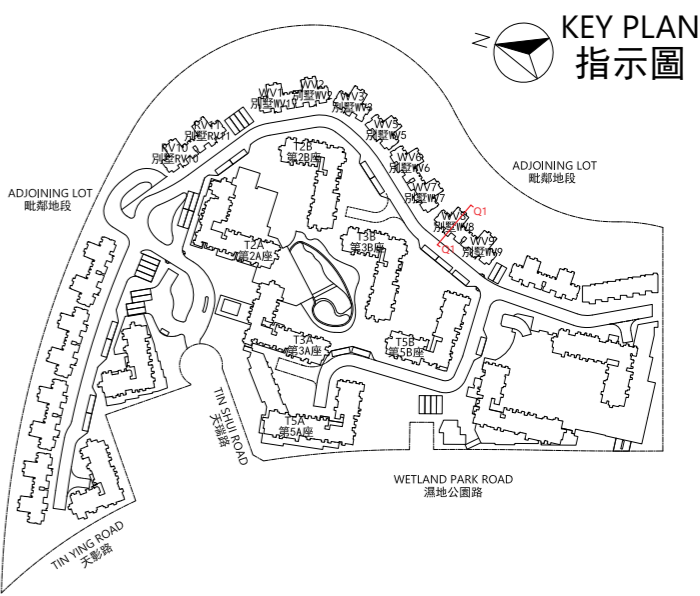
備註：

1. ▽ 代表香港主水平基準以上的高度(米)。
2. -- 虛線代表期數中建築物之最低住宅樓層水平。
3. 毗連建築物的一段緊急車輛通道為香港主水平基準以上7.30米。
4. 毗連建築物的一段行人道為香港主水平基準以上7.40米。

CROSS-SECTION PLAN OF BUILDING IN THE PHASE
期數中的建築物的橫截面圖



CROSS-SECTION PLAN Q1
橫截面圖 Q1



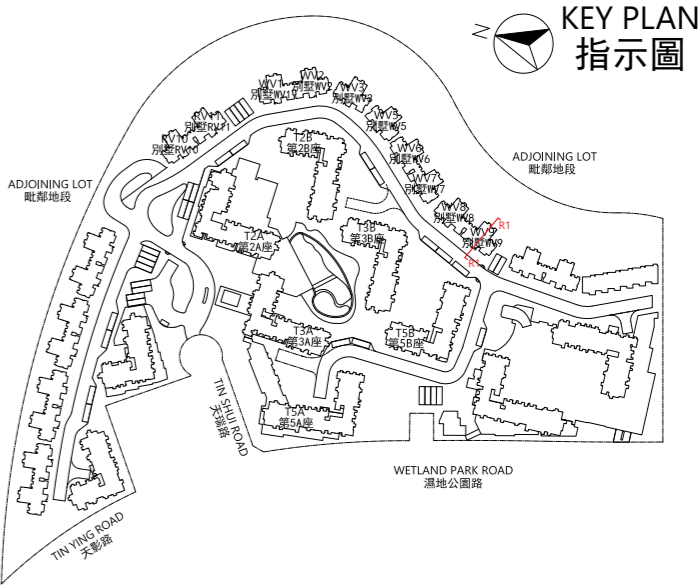
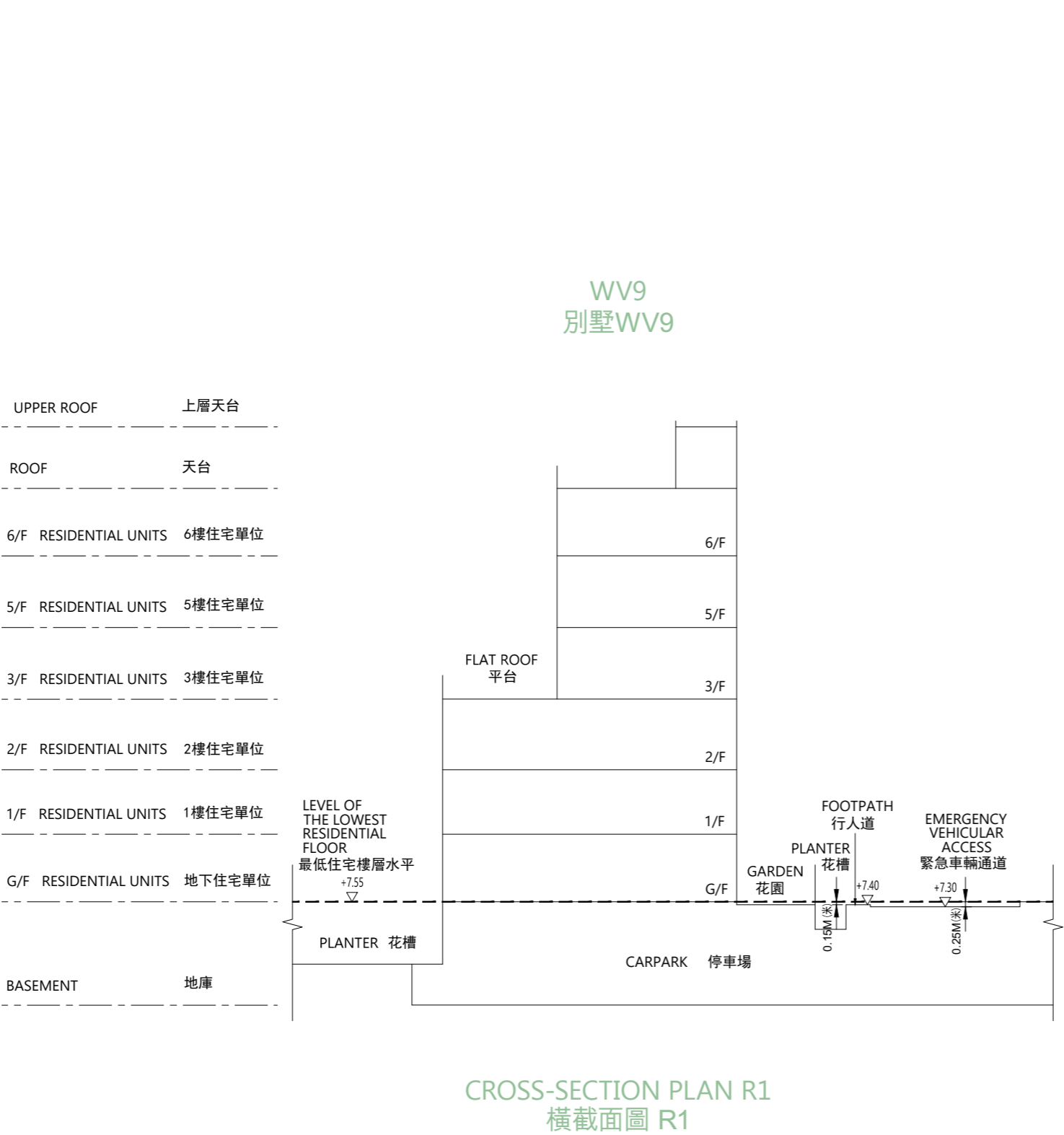
NOTES:

1. ▽ Denotes height (in metres) above the Hong Kong Principal Datum.
2. --- Dotted line denotes the level of the lowest residential floor of the building in the Phase.
3. The part of Emergency Vehicular Access adjacent to the building is 7.30 metres above the Hong Kong Principal Datum.
4. The part of footpath adjacent to the building is 7.40 metres above the Hong Kong Principal Datum.

備註：

1. ▽ 代表香港主水平基準以上的高度(米)。
2. --- 虛線代表期數中建築物之最低住宅樓層水平。
3. 毗連建築物的一段緊急車輛通道為香港主水平基準以上7.30米。
4. 毗連建築物的一段行人道為香港主水平基準以上7.40米。

CROSS-SECTION PLAN OF BUILDING IN THE PHASE
期數中的建築物的橫截面圖



- NOTES:
1. ∇ Denotes height (in metres) above the Hong Kong Principal Datum.
 2. --Dotted line denotes the level of the lowest residential floor of the building in the Phase.
 3. The part of Emergency Vehicular Access adjacent to the building is 7.30 metres above the Hong Kong Principal Datum.
 4. The part of footpath adjacent to the building is 7.40 metres above the Hong Kong Principal Datum.

- 備註：
1. ∇ 代表香港主水平基準以上的高度(米)。
 2. -- 虛線代表期數中建築物之最低住宅樓層水平。
 3. 毗連建築物的一段緊急車輛通道為香港主水平基準以上7.30米。
 4. 毗連建築物的一段行人道為香港主水平基準以上7.40米。