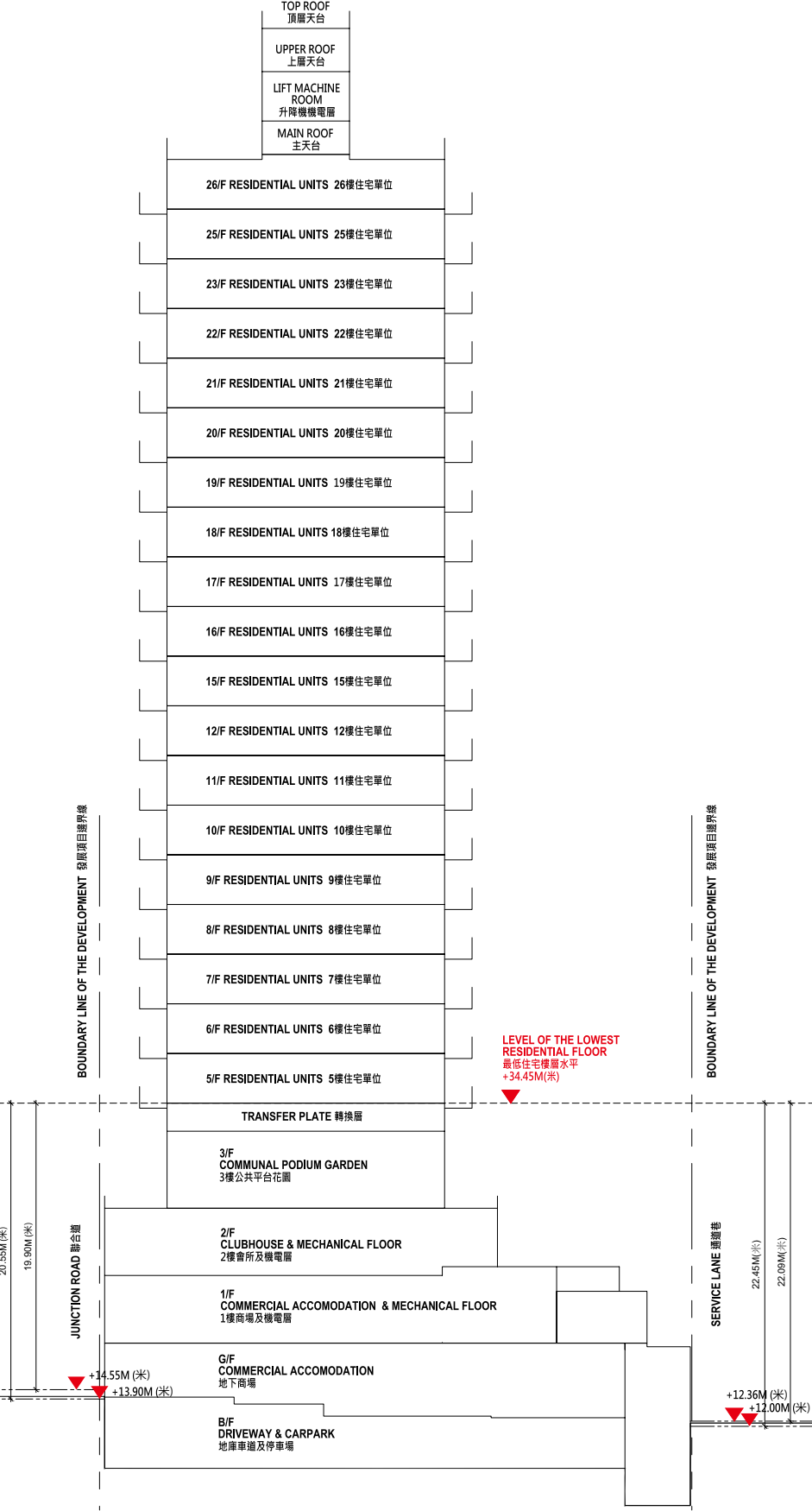
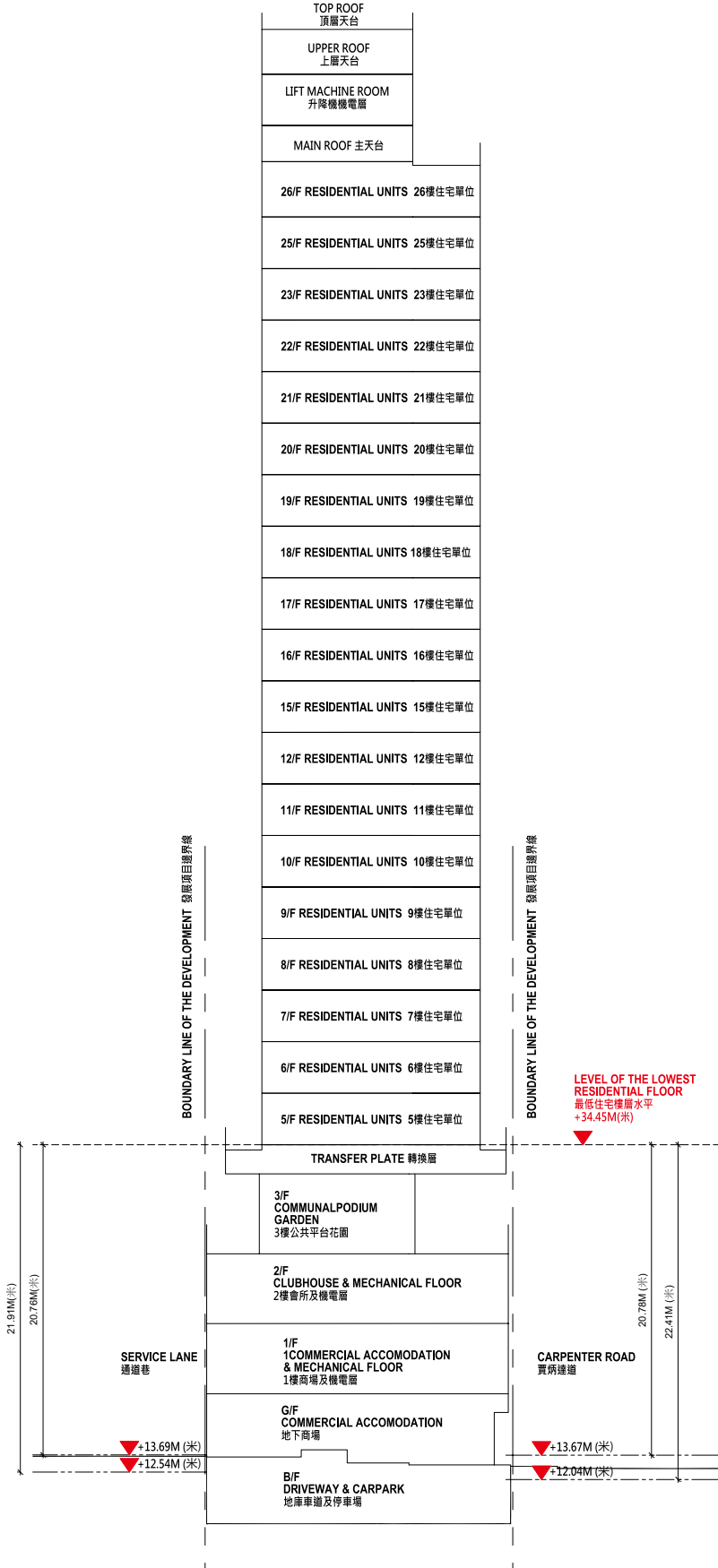


CROSS-SECTION PLAN OF BUILDING IN THE DEVELOPMENT  
發展項目中的建築物的橫截面圖

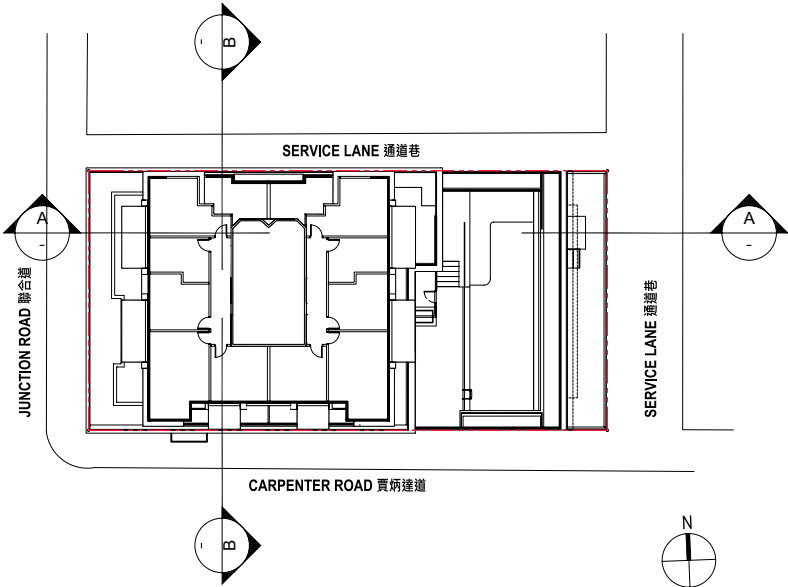


CROSS-SECTION PLAN A-A  
橫截面圖 A-A



CROSS-SECTION PLAN B-B  
橫截面圖 B-B

KEY PLAN 指示圖



- ▼ Denotes height (in metres) above the Hong Kong Principal Datum.  
代表香港主水平基準以上的高度(米)。
- Dotted line denotes the level of the lowest residential floor.  
虛線代表建築物之最低住宅樓層水平。

- Remarks:
1. The part of Junction Road adjacent to the building is 13.90m to 14.55m above the Hong Kong Principal Datum.
  2. The part of Carpenter Road adjacent to the building is 12.04m to 13.67m above the Hong Kong Principal Datum.
  3. The part of service lane (to the east of the Development) adjacent to the building is 12.00m to 12.36m above the Hong Kong Principal Datum.
  4. The part of service lane (to the north of the Development) adjacent to the building is 12.54m to 13.69m above the Hong Kong Principal Datum.
  5. The vendor advises purchasers to conduct on-site visit for a better understanding of the development, its surrounding environment and the public facilities nearby.

- 備註：
1. 毗連建築物的一段聯合道為香港主水平基準以上 13.90 米至 14.55 米。
  2. 毗連建築物的一段賈炳達道為香港主水平基準以上 12.04 米至 13.67 米。
  3. 毗連建築物的一段通道巷 (發展項目的東面) 為香港主水平基準以上 12.00 米至 12.36 米。
  4. 毗連建築物的一段通道巷 (發展項目的北面) 為香港主水平基準以上 12.54 米至 13.69 米。
  5. 賣方建議買方到該發展項目作實地考察，以獲得對該發展項目及周圍地區的公共設施及環境較佳的了解。