

7 期數的鳥瞰照片 AERIAL PHOTOGRAPH OF THE PHASE



● 期數的位置
Location of the Phase

比例尺 SCALE
米 metres 0 50 100 150 200 250



摘錄自地政總署測繪處在6,900呎的飛行高度拍攝之鳥瞰照片，照片編號為E184938C，飛行日期：2023年2月23日。

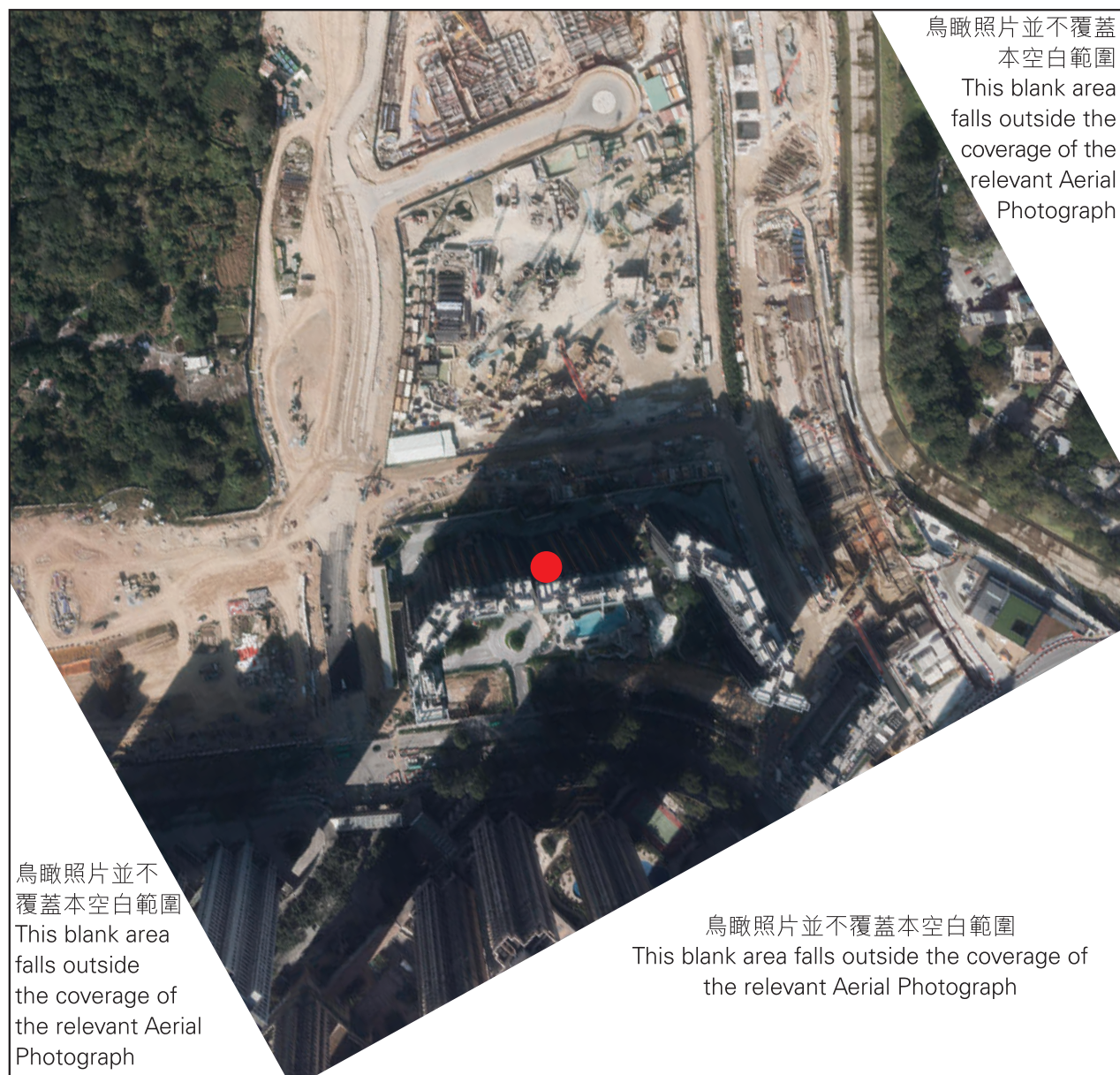
Adopted from part of the aerial photograph taken by the Survey and Mapping Office of the Lands Department at a flying height of 6,900 feet, Photo No. E184938C, dated of flight: 23rd February 2023.

香港特別行政區政府地政總署測繪處©版權所有，未經許可，不得複製。
Survey and Mapping Office, Lands Department, The Government of HKSAR © Copyright reserved – reproduction by permission only.

備註：1. 期數的鳥瞰照片之副本可於售樓處開放時間內免費查閱。
2. 由於期數的邊界不規則的技術原因，此照片所顯示的範圍可能超過《一手住宅物業銷售條例》的規定範圍。

Note：1. Copy of the aerial photograph of the Phase is available for free inspection at the sales office during opening hours.
2. The aerial photograph may show more than the area required under the Residential Properties (First-hand Sales) Ordinance due to techical reason that the boundary of the Phase is irregular.

7 期數的鳥瞰照片 AERIAL PHOTOGRAPH OF THE PHASE



● 期數的位置
Location of the Phase

比例尺 SCALE
米 metres 0 50 100 150 200 250



摘錄自地政總署測繪處在2,000呎的飛行高度拍攝之鳥瞰照片，照片編號為E214764C，飛行日期：2023年12月28日。

Adopted from part of the aerial photograph taken by the Survey and Mapping Office of the Lands Department at a flying height of 2,000 feet, Photo No. E214764C, dated of flight: 28th December 2023.

香港特別行政區政府地政總署測繪處©版權所有，未經許可，不得複製。

Survey and Mapping Office, Lands Department, The Government of HKSAR © Copyright reserved – reproduction by permission only.

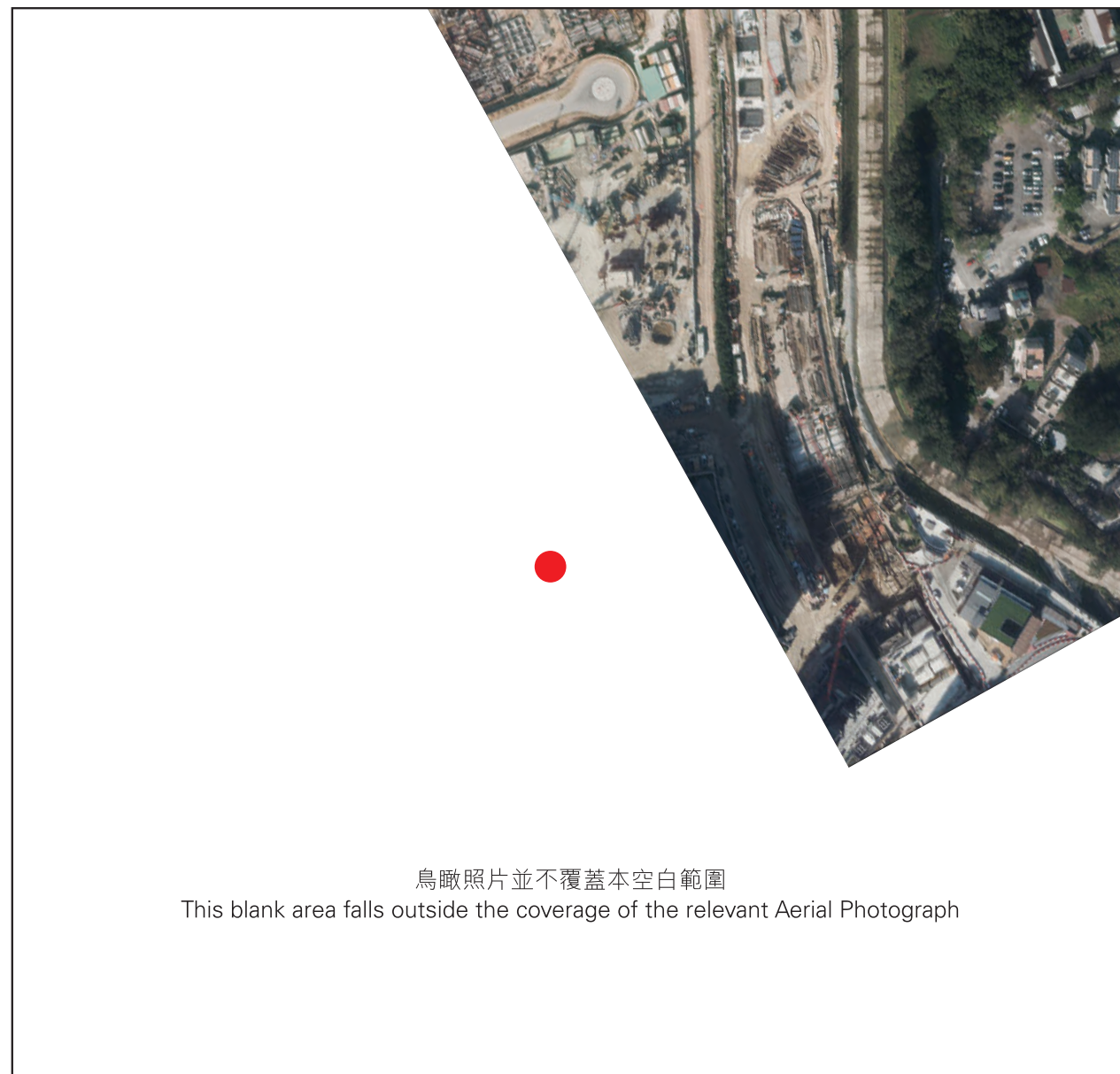
備註：1. 期數的鳥瞰照片之副本可於售樓處開放時間內免費查閱。

2. 由於期數的邊界不規則的技術原因，此照片所顯示的範圍可能超過《一手住宅物業銷售條例》的規定範圍。

Note：1. Copy of the aerial photograph of the Phase is available for free inspection at the sales office during opening hours.

2. The aerial photograph may show more than the area required under the Residential Properties (First-hand Sales) Ordinance due to techical reason that the boundary of the Phase is irregular.

7 期數的鳥瞰照片 AERIAL PHOTOGRAPH OF THE PHASE



● 期數的位置
Location of the Phase

比例尺 SCALE
米 metres 0 50 100 150 200 250



摘錄自地政總署測繪處在2,000呎的飛行高度拍攝之鳥瞰照片，照片編號為E214762C，飛行日期：2023年12月28日。

Adopted from part of the aerial photograph taken by the Survey and Mapping Office of the Lands Department at a flying height of 2,000 feet, Photo No. E214762C, dated of flight: 28th December 2023.

香港特別行政區政府地政總署測繪處©版權所有，未經許可，不得複製。

Survey and Mapping Office, Lands Department, The Government of HKSAR © Copyright reserved – reproduction by permission only.

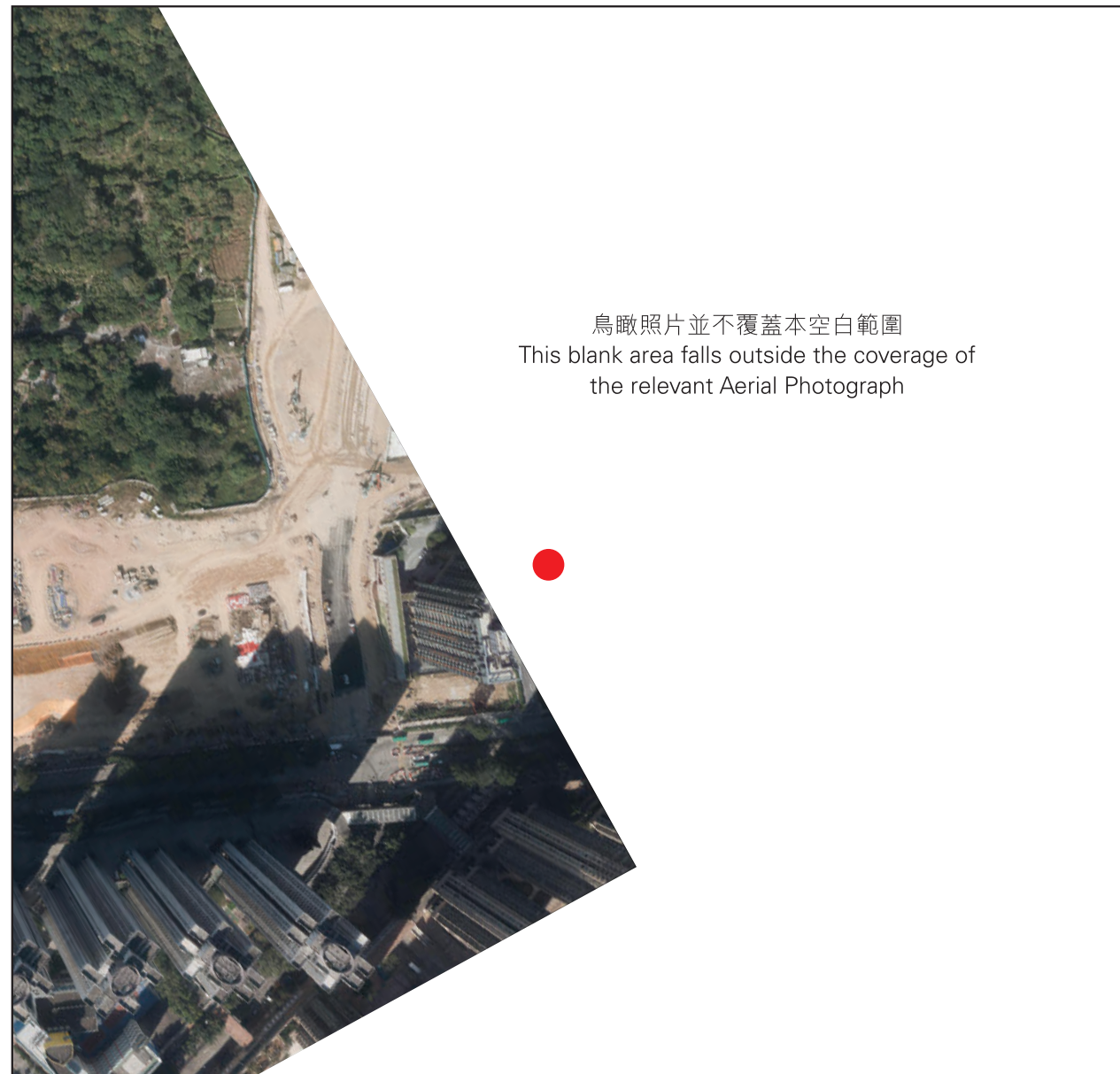
備註：1. 期數的鳥瞰照片之副本可於售樓處開放時間內免費查閱。

2. 由於期數的邊界不規則的技術原因，此照片所顯示的範圍可能超過《一手住宅物業銷售條例》的規定範圍。

Note：1. Copy of the aerial photograph of the Phase is available for free inspection at the sales office during opening hours.

2. The aerial photograph may show more than the area required under the Residential Properties (First-hand Sales) Ordinance due to techical reason that the boundary of the Phase is irregular.

7 期數的鳥瞰照片 AERIAL PHOTOGRAPH OF THE PHASE



● 期數的位置
Location of the Phase

比例尺 SCALE
米 metres 0 50 100 150 200 250



摘錄自地政總署測繪處在2,000呎的飛行高度拍攝之鳥瞰照片，照片編號為E214766C，飛行日期：2023年12月28日。

Adopted from part of the aerial photograph taken by the Survey and Mapping Office of the Lands Department at a flying height of 2,000 feet, Photo No. E214766C, dated of flight: 28th December 2023.

香港特別行政區政府地政總署測繪處©版權所有，未經許可，不得複製。

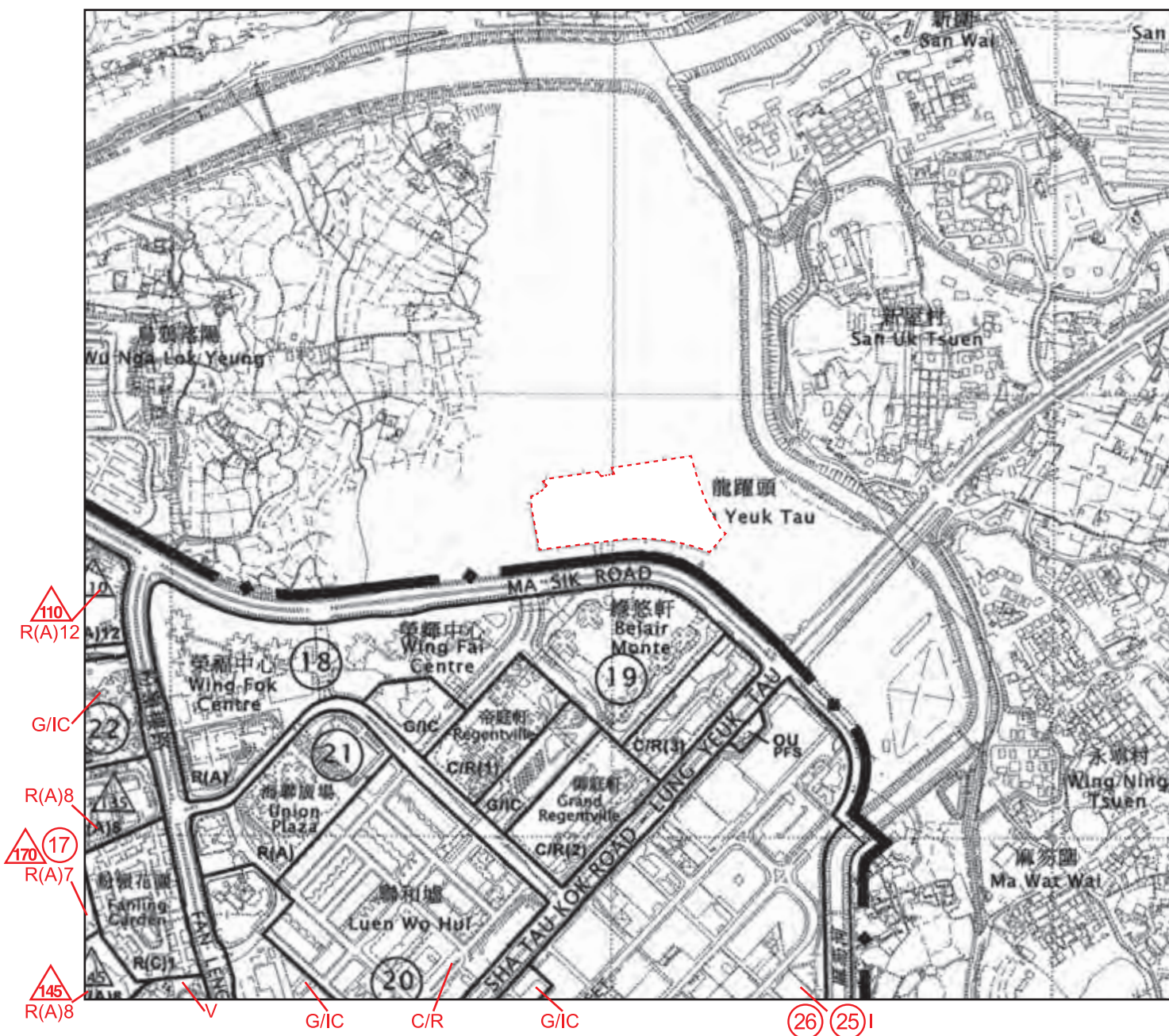
Survey and Mapping Office, Lands Department, The Government of HKSAR © Copyright reserved – reproduction by permission only.

備註：1. 期數的鳥瞰照片之副本可於售樓處開放時間內免費查閱。

2. 由於期數的邊界不規則的技術原因，此照片所顯示的範圍可能超過《一手住宅物業銷售條例》的規定範圍。

Note：1. Copy of the aerial photograph of the Phase is available for free inspection at the sales office during opening hours.

2. The aerial photograph may show more than the area required under the Residential Properties (First-hand Sales) Ordinance due to techical reason that the boundary of the Phase is irregular.



發展項目的位置
Location of the Development

比例尺 SCALE
米 metres 0 100 200 300 400 500



摘錄自2024年4月19日刊憲之粉嶺/上水分區計劃大綱核准圖，圖則編號為S/FSS/28，有需要處經修正處理，以紅色顯示。

Adopted from part of the Approved Fanling / Sheung Shui Outline Zoning Plan with Plan No. S/FSS/28, gazetted on 19 April 2024, with adjustments where necessary as shown in red.

圖例 NOTATION

地帶 ZONES

C/R	商業 / 住宅 COMMERCIAL / RESIDENTIAL
R(A)	住宅 (甲類) RESIDENTIAL (GROUP A)
R(C)	住宅 (丙類) RESIDENTIAL (GROUP C)
V	鄉村式發展 VILLAGE TYPE DEVELOPMENT
I	工業 INDUSTRIAL
G/IC	政府、機構或社區 GOVERNMENT, INSTITUTION OR COMMUNITY
OU	其他指定用途 OTHER SPECIFIED USES

交通 COMMUNICATIONS

主要道路及路口 MAJOR ROAD AND JUNCTION

其他 MISCELLANEOUS

規劃範圍界線 BOUNDARY OF PLANNING SCHEME
 ① 規劃區編號 PLANNING AREA NUMBER
 P F S 加油站 PETROL FILLING STATION

備註：

1. 在印刷售樓說明書當日所適用的最近期分區計劃大綱圖及其附表，可於售樓處開放時間內免費查閱。
2. 賣方亦建議準買家到有關發展地盤作實地考察，以對該發展地盤、其周邊地區環境及附近的公共設施有較佳了解。
3. 由於發展項目的邊界不規則的技術原因，此地圖所顯示的範圍可能超過《一手住宅物業銷售條例》所規定的範圍。
4. 此地圖為規劃署遵照城市規劃委員會指示擬備，版權屬香港特別行政區政府，經地政總署准許複印。

Notes:

1. The last updated Outline Zoning Plan and the attached schedule as at the date of printing of the sales brochure is available for free inspection at the sales office during opening hours.
2. The Vendor also advises prospective purchasers to conduct an on-site visit for a better understanding of the development site, its surrounding environment and the public facilities nearby.
3. The plan may show more than the area required under the Residential Properties (First-hand Sales) Ordinance due to technical reason that the boundary of the Development is irregular.
4. The plan, prepared by the Planning Department under the direction of the Town Planning Board, is reproduced with the permission of the Director of Lands. ©The Government of Hong Kong SAR.