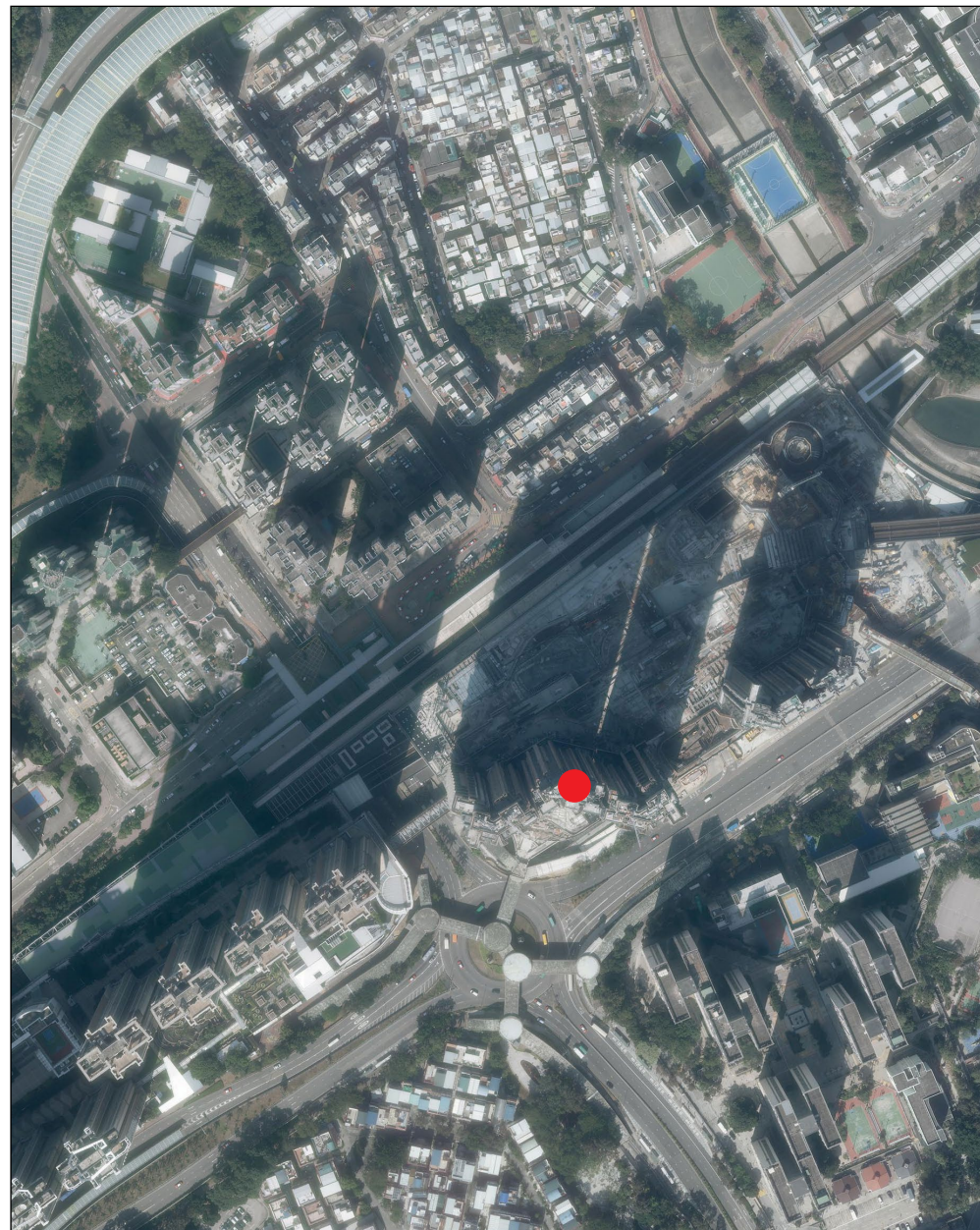


Aerial photograph of the phase 期數的鳥瞰照片

Adopted from part of the aerial photograph taken by the Survey and Mapping Office of Lands Department at a flying height of 6,900 feet, photo No. E109516C, dated 1 December 2020.

摘錄自地政總署測繪處於2020年12月1日在6,900呎飛行高度拍攝之鳥瞰照片，編號為E109516C。



This blank area
falls outside
the coverage
of the aerial
photograph
鳥瞰照片並不覆蓋
本空白範圍

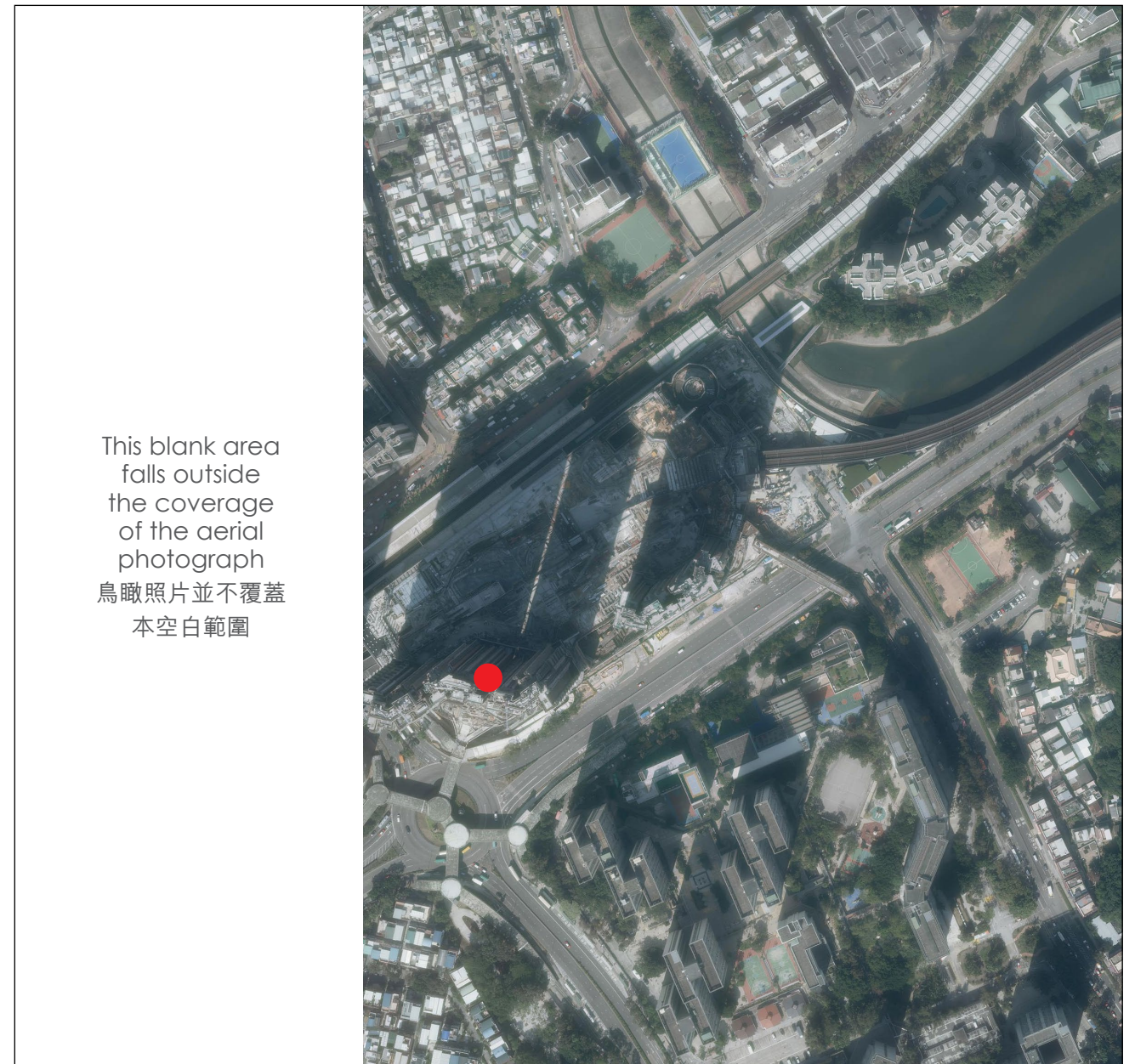
● Location of the Phase
期數的位置

Survey and Mapping Office, Lands Department, The Government of the HKSAR © Copyright reserved - reproduction by permission only.

香港特別行政區政府地政總署測繪處版權所有，未經許可，不得複製。

Adopted from part of the aerial photograph taken by the Survey and Mapping Office of Lands Department at a flying height of 6,900 feet, photo No. E109518C, dated 1 December 2020.

摘錄自地政總署測繪處於2020年12月1日在6,900呎飛行高度拍攝之鳥瞰照片，編號為E109518C。



This blank area
falls outside
the coverage
of the aerial
photograph
鳥瞰照片並不覆蓋
本空白範圍

Remarks :

1. The aerial photographs are available for free inspection during normal office hours at the sales office.
2. Due to technical reasons as a result of the irregular boundary of the Phase, the aerial photographs have shown more than the area required under the Residential Properties (First-hand Sales) Ordinance.

備註：

1. 該等鳥瞰照片存於售樓處，於正常辦公時間內供免費查閱。
2. 因期數的不規則界線引致的技術原因，鳥瞰照片所顯示的範圍多於《一手住宅物業銷售條例》所要求。