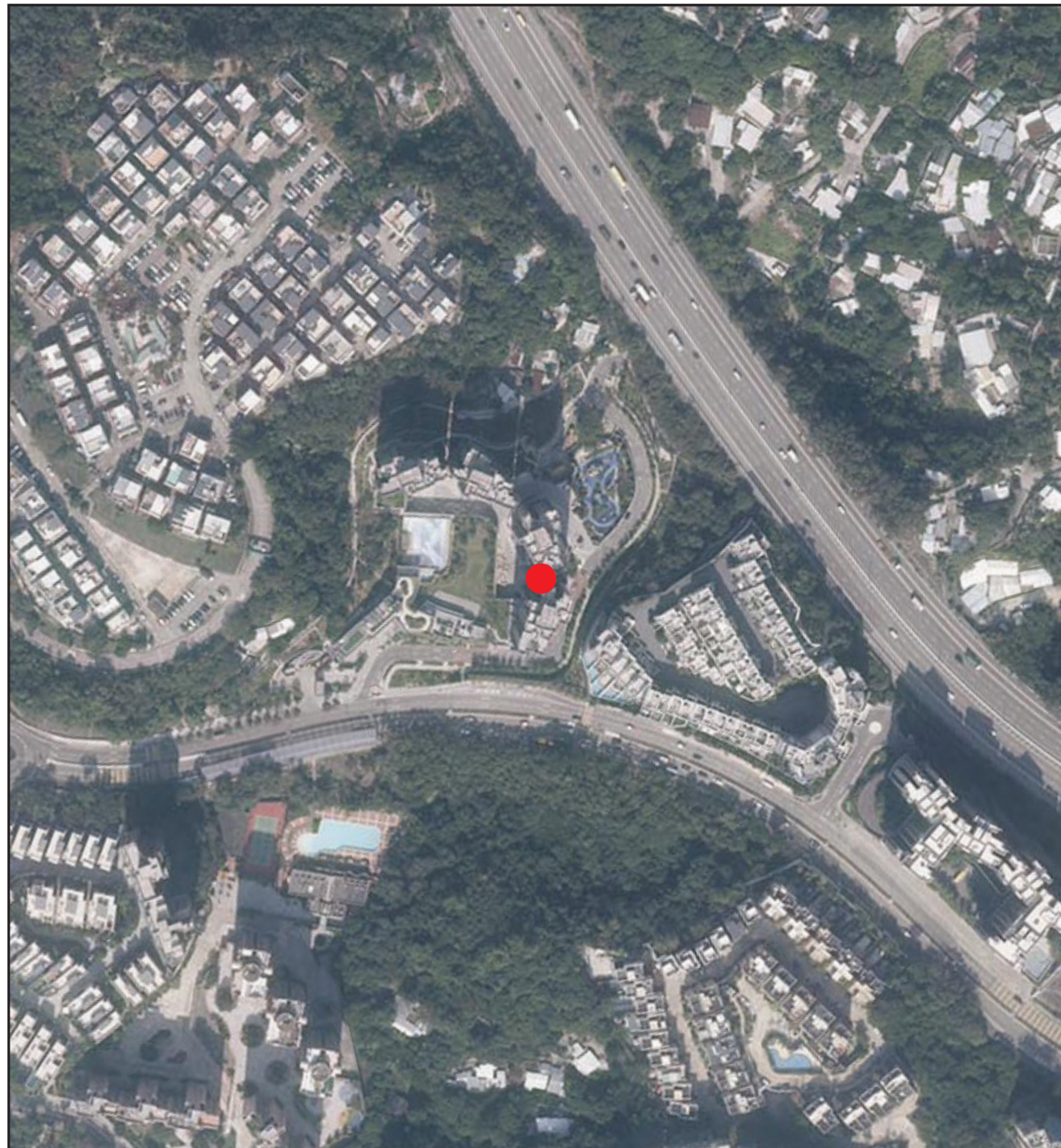


期數的鳥瞰照片 Aerial photograph of the Phase



摘錄自地政總署測繪處於2023年11月28日在6,900呎飛行高度拍攝之鳥瞰照片，編號為E213394C。
Extracted from the aerial photograph taken by the Survey and Mapping Office of Lands Department at a flying height of 6,900 feet, Photo No. E213394C, dated 28th November 2023.

香港特別行政區政府地政總署測繪處©版權所有，未經許可，不得複製。
Survey and Mapping Office, Lands Department, The Government of HKSAR ©Copyright reserved – reproduction by permission only.

● 期數的位置
Location of the Phase

備註 Notes :

因技術原因 (例如期數之不規則形狀)，鳥瞰照片所顯示之範圍多於《一手住宅物業銷售條例》所要求顯示的範圍。

Due to technical reasons (such as the irregular shape of the Phase), the aerial photograph has shown more than the area required under the Residential Properties (First-hand Sales) Ordinance.

賣方亦建議準買方到有關發展地盤作實地考察，以對該發展地盤、其周邊地區環境及附近的公共設施有較佳了解。

The Vendor also advises prospective purchasers to conduct an on-site visit for a better understanding of the development site, its surrounding environment and the public facilities nearby.