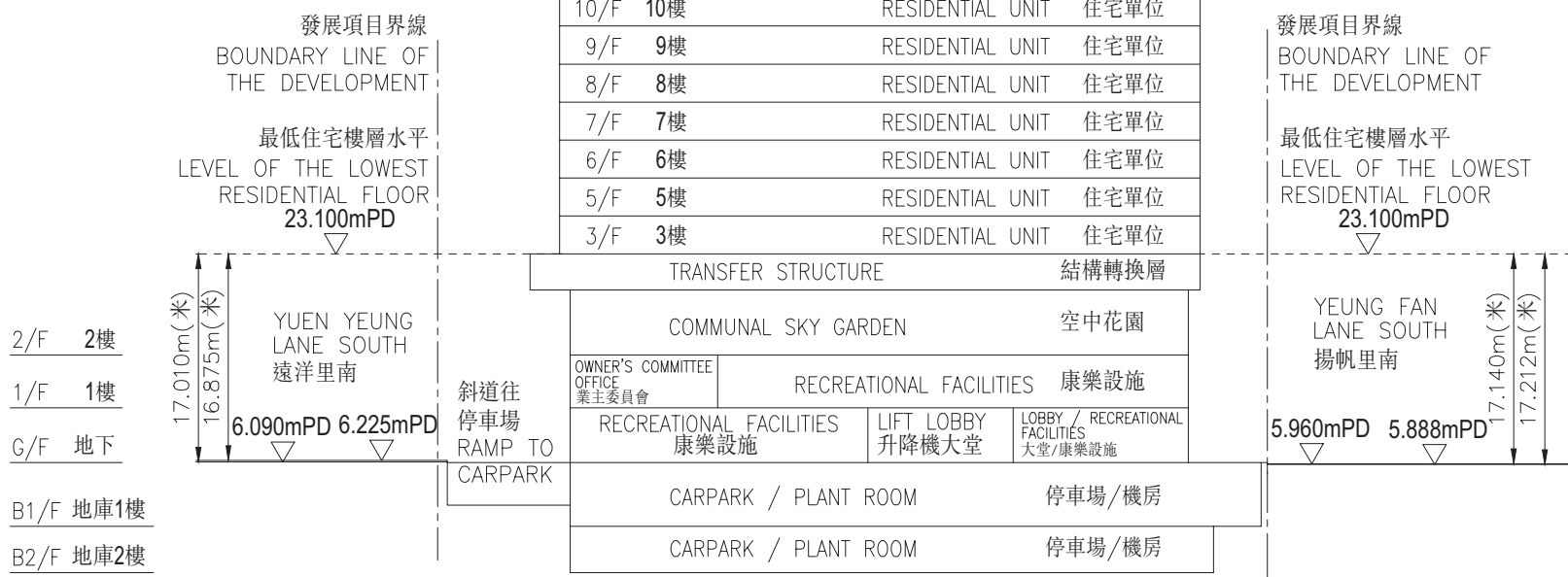


# 19 CROSS-SECTION PLAN OF BUILDING IN THE PHASE

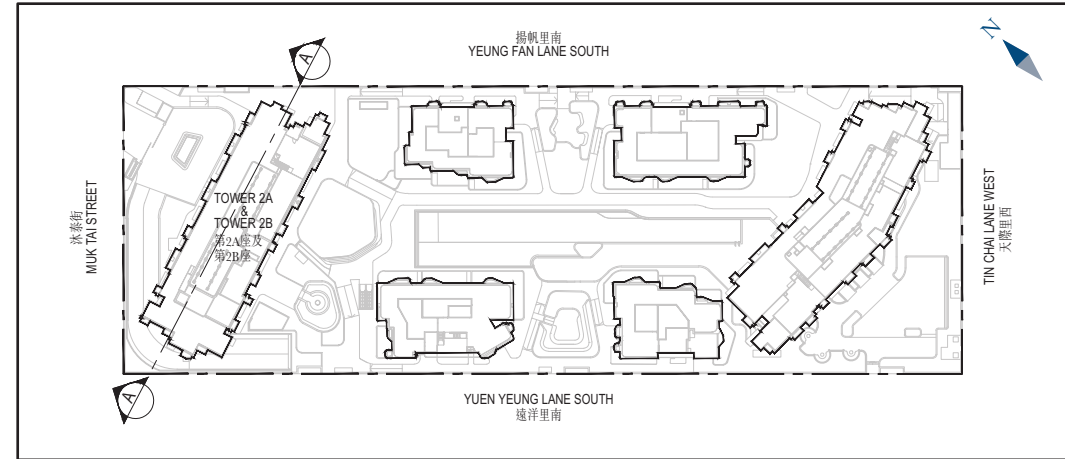
## 期數中的建築物的橫截面圖

### TOWER 2A & TOWER 2B 第2A座及第2B座

### CROSS-SECTION PLAN A-A 橫截面圖A-A



### KEY PLAN 索引圖



- ▽ Height in metres above the Hong Kong Principal Datum (HKPD).  
香港主水平基準以上高度(米)。
- Dotted line denotes the level of the lowest residential floor of the building.  
虛線為該建築物最低住宅樓層水平。

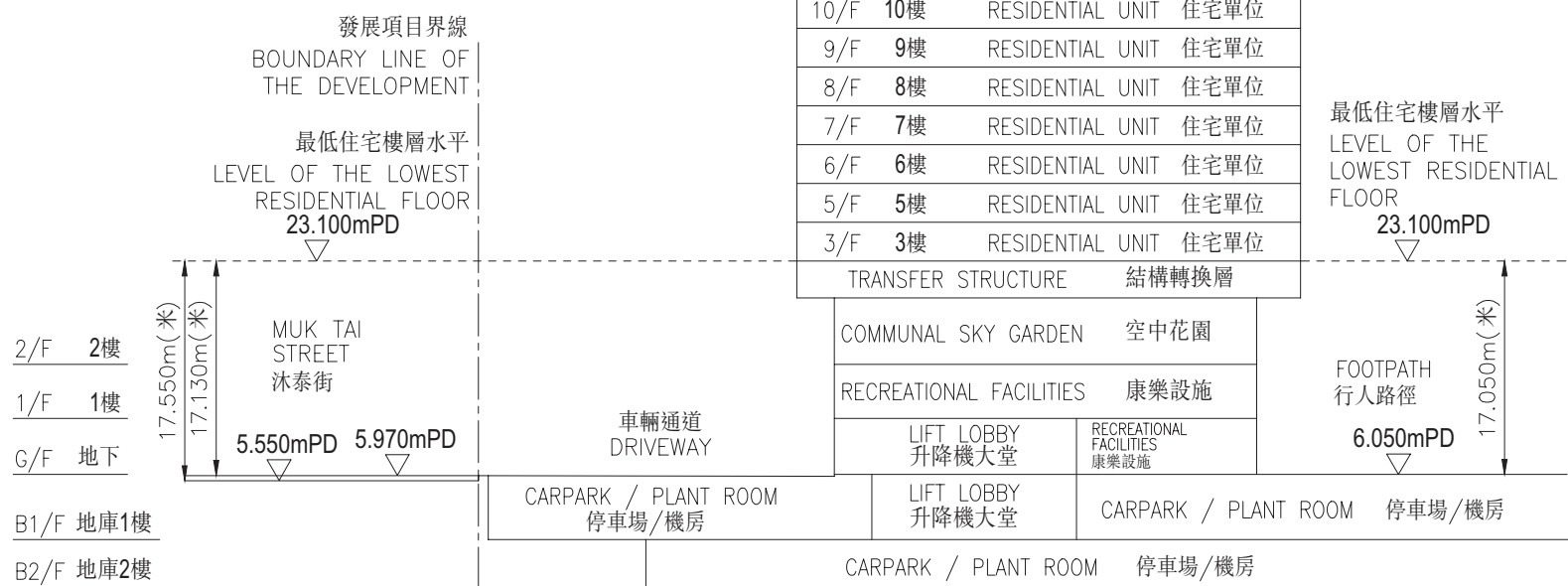
The part of Yuen Yeung Lane South adjacent to the Tower 2A & Tower 2B is 6.090 metres to 6.225 metres above the Hong Kong Principal Datum.  
毗連第2A座及第2B座的一段遠洋里南為香港主水平基準以上6.090米至6.225米。

The part of Yeung Fan Lane South adjacent to the Tower 2A & Tower 2B is 5.888 metres to 5.960 metres above the Hong Kong Principal Datum.  
毗連第2A座及第2B座的一段揚帆里南為香港主水平基準以上5.888米至5.960米。

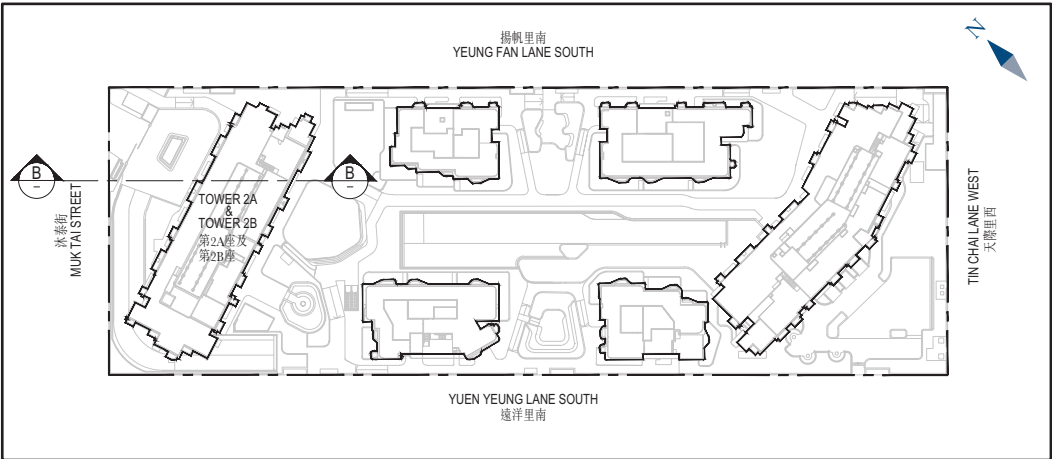
# 19 CROSS-SECTION PLAN OF BUILDING IN THE PHASE 期數中的建築物的橫截面圖

## TOWER 2A & TOWER 2B 第2A座及第2B座

### CROSS-SECTION PLAN B-B 橫截面圖B-B



## KEY PLAN 索引圖



▽ Height in metres above the Hong Kong Principal Datum (HKPD).  
香港主水平基準以上高度(米)。

----- Dotted line denotes the level of the lowest residential floor of the building.  
虛線為該建築物最低住宅樓層水平。

The part of footpath adjacent to the Tower 2A & Tower 2B is 6.050 metres above the Hong Kong Principal Datum.  
毗連第2A座及第2B座的一段行人路徑為香港主水平基準以上6.050米。

The part of Muk Tai Street adjacent to the Tower 2A & Tower 2B is 5.550 metres to 5.970 metres above the Hong Kong Principal Datum.  
毗連第2A座及第2B座的一段沐泰街為香港主水平基準以上5.550米至5.970米。