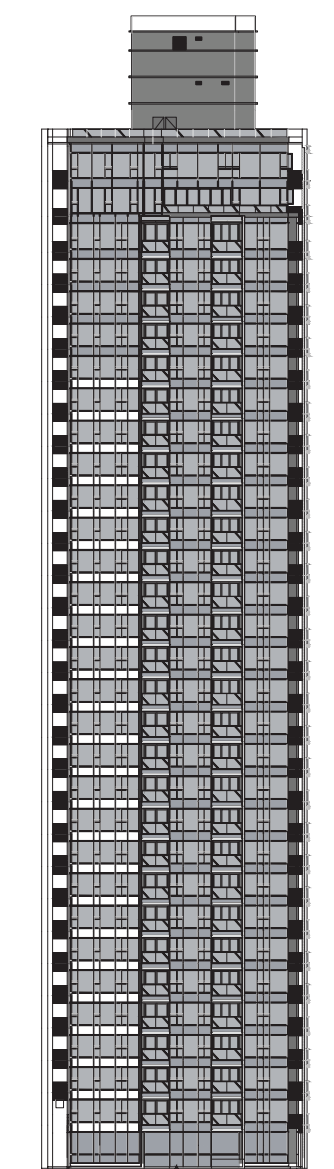
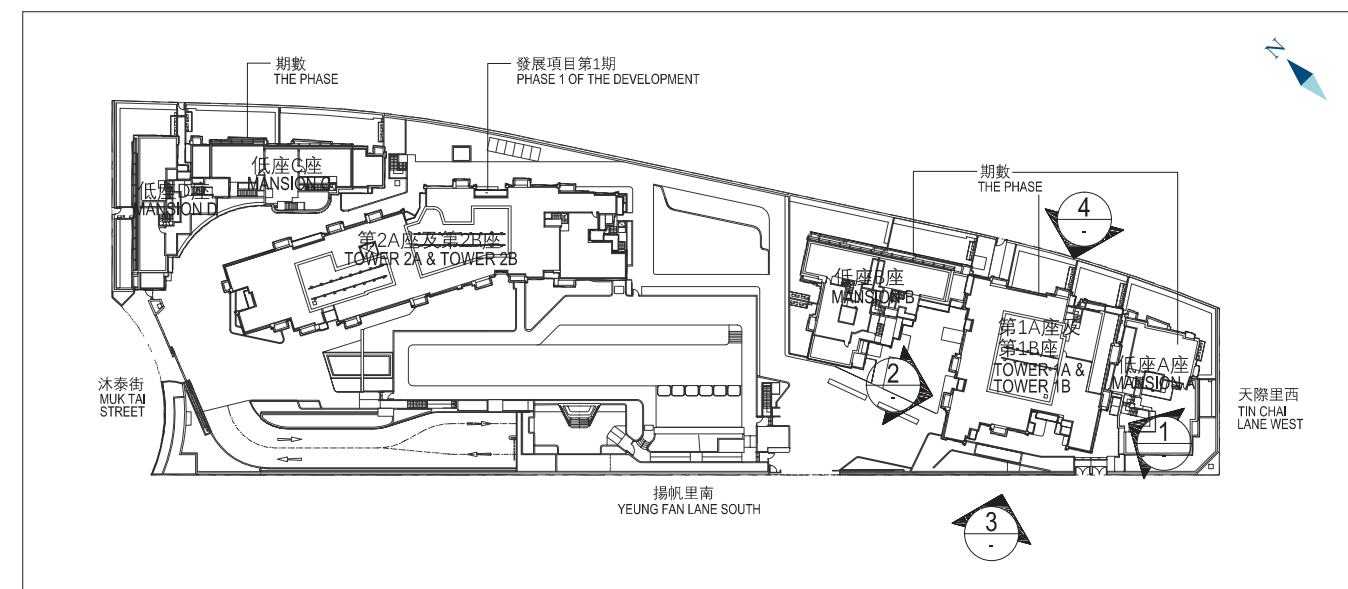


20 ELEVATION PLAN 立面圖

TOWER 1A & TOWER 1B - ELEVATION PLANS 1, 2, 3 & 4 第1A座及第1B座立面圖1, 2, 3及4

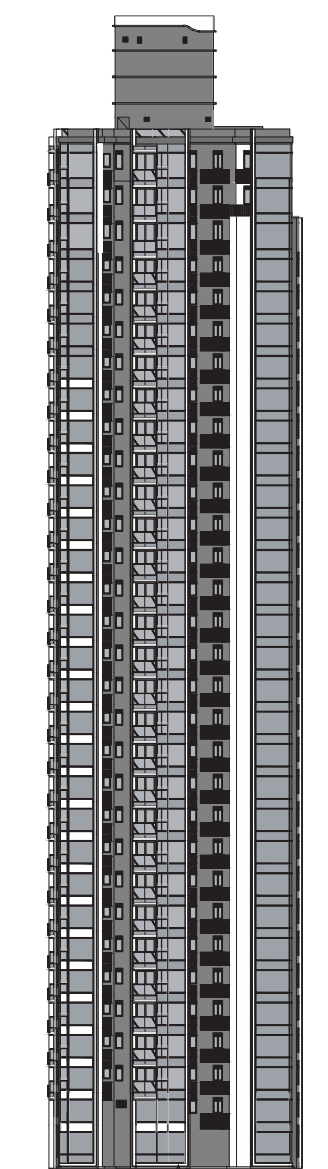
KEY PLAN 索引圖



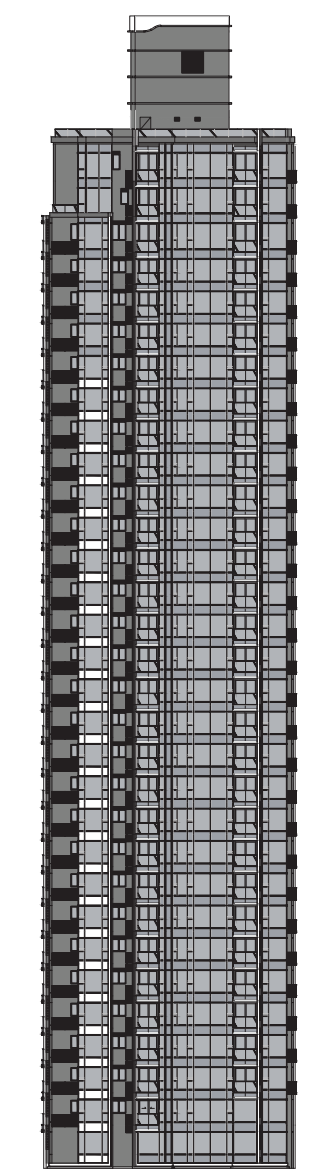
Elevation 1
立面圖1



Elevation 2
立面圖2



Elevation 3
立面圖3



Elevation 4
立面圖4

Authorized Person for the Phase has certified that the elevations shown on these plans:

期數的認可人士證明本圖所顯示的立面：

- (1) are prepared on the basis of the approved building plans for the Phase as of 9 February 2022 and the approved phasing plans for the Phase as of 28 February 2022; and

以2022年2月9日的情況為準的期數的經批准的建築圖則及以2022年2月28日的情況為準的期數的經批准的期數圖則為基礎擬備；及

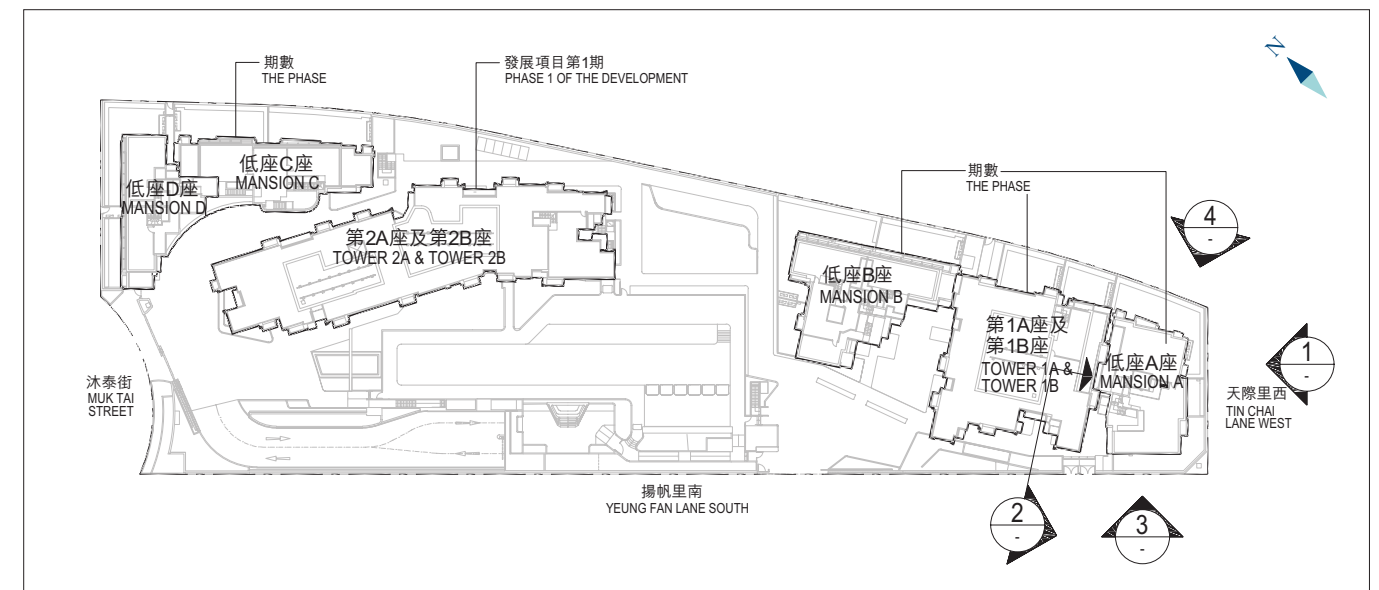
- (2) are in general accordance with the outward appearance of the Phase.

大致上與期數的外觀一致。

20 ELEVATION PLAN 立面圖

MANSION A - ELEVATION PLANS 1, 2, 3 & 4 低座A座立面圖1, 2, 3及4

KEY PLAN 索引圖



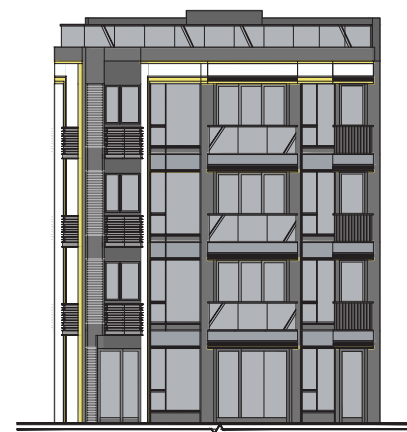
Elevation 1
立面圖1



Elevation 2
立面圖2



Elevation 3
立面圖3



Elevation 4
立面圖4

Authorized Person for the Phase has certified that the elevations shown on these plans:

期數的認可人士證明本圖所顯示的立面：

- (1) are prepared on the basis of the approved building plans for the Phase as of 9 February 2022 and the approved phasing plans for the Phase as of 28 February 2022; and

以2022年2月9日的情況為準的期數的經批准的建築圖則及以2022年2月28日的情況為準的期數的經批准的期數圖則為基礎擬備；及

- (2) are in general accordance with the outward appearance of the Phase.
大致上與期數的外觀一致。

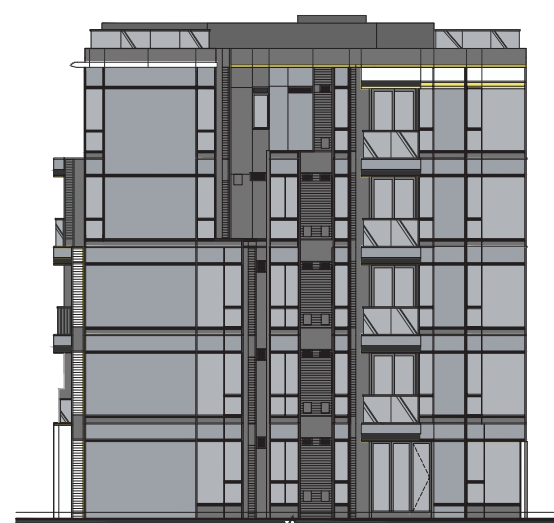
20 ELEVATION PLAN 立面圖

MANSION B - ELEVATION PLANS 1, 2, 3 & 4 低座B座立面圖1, 2, 3及4

KEY PLAN 索引圖



Elevation 1
立面圖1



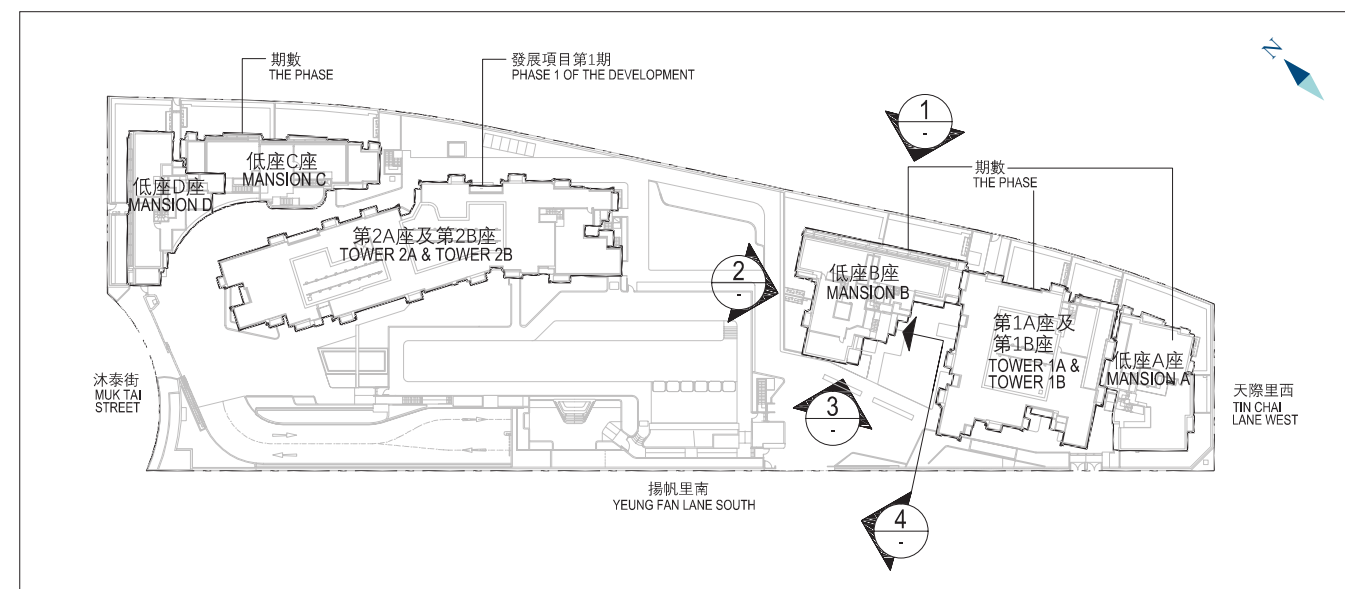
Elevation 2
立面圖2



Elevation 3
立面圖3



Elevation 4
立面圖4



Authorized Person for the Phase has certified that the elevations shown on these plans:

期數的認可人士證明本圖所顯示的立面：

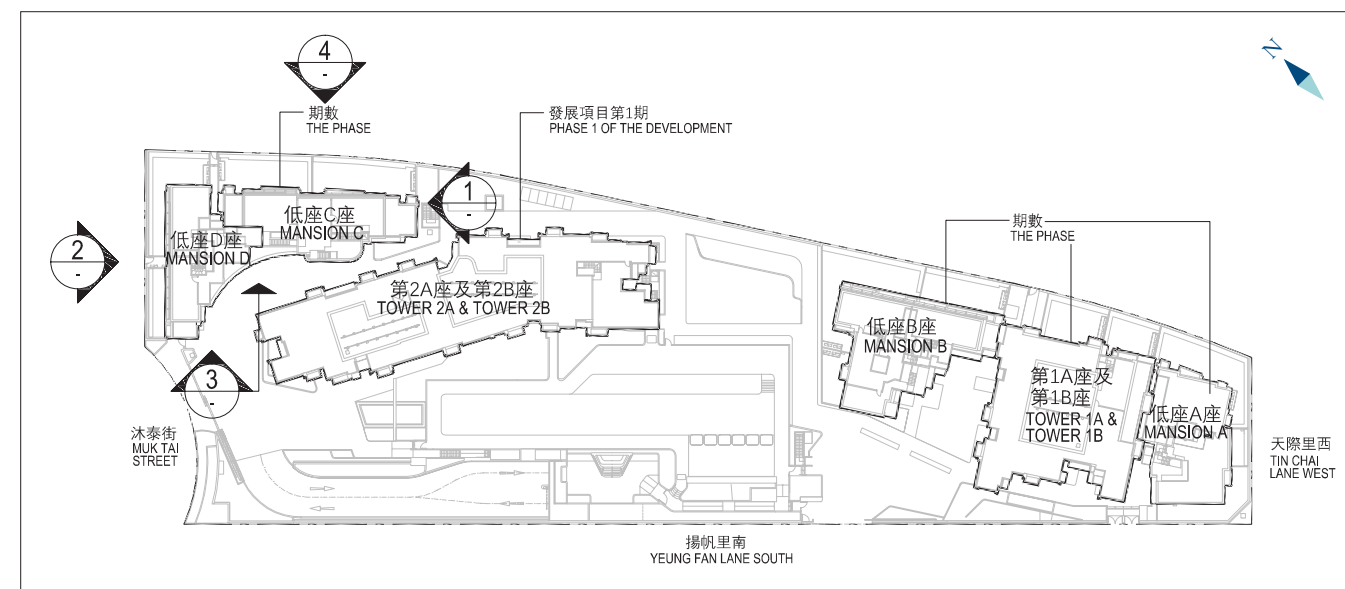
- (1) are prepared on the basis of the approved building plans for the Phase as of 9 February 2022 and the approved phasing plans for the Phase as of 28 February 2022; and

以2022年2月9日的情況為準的期數的經批准的建築圖則及以2022年2月28日的情況為準的期數的經批准的期數圖則為基礎擬備；及

- (2) are in general accordance with the outward appearance of the Phase.
大致上與期數的外觀一致。

MANSION C & MANSION D - ELEVATION PLANS 1, 2, 3 & 4 低座C座及低座D座立面圖1, 2, 3及4

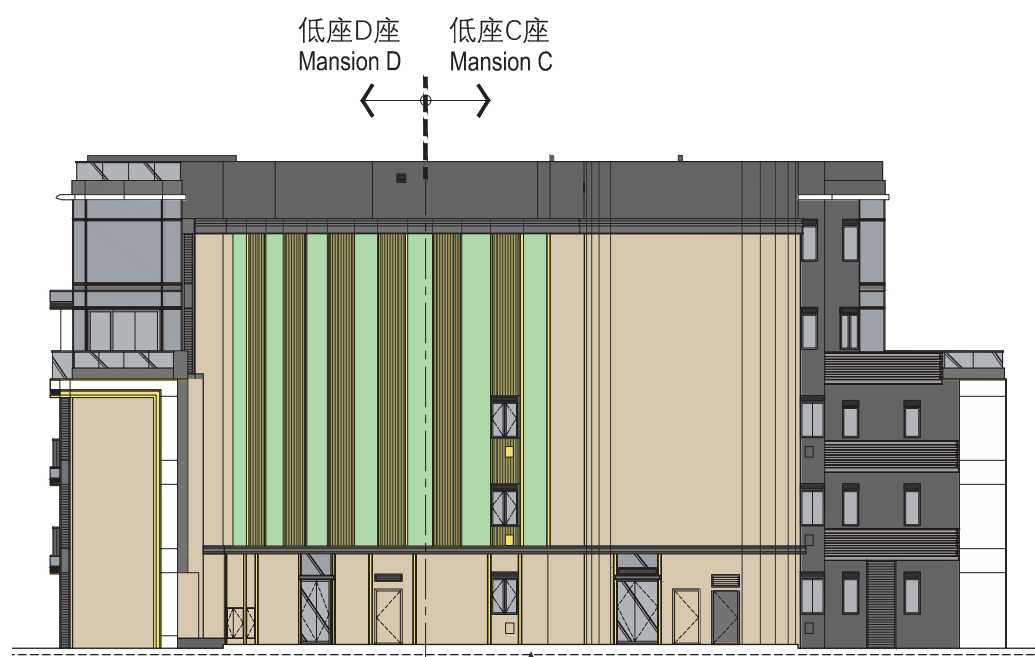
KEY PLAN 索引圖



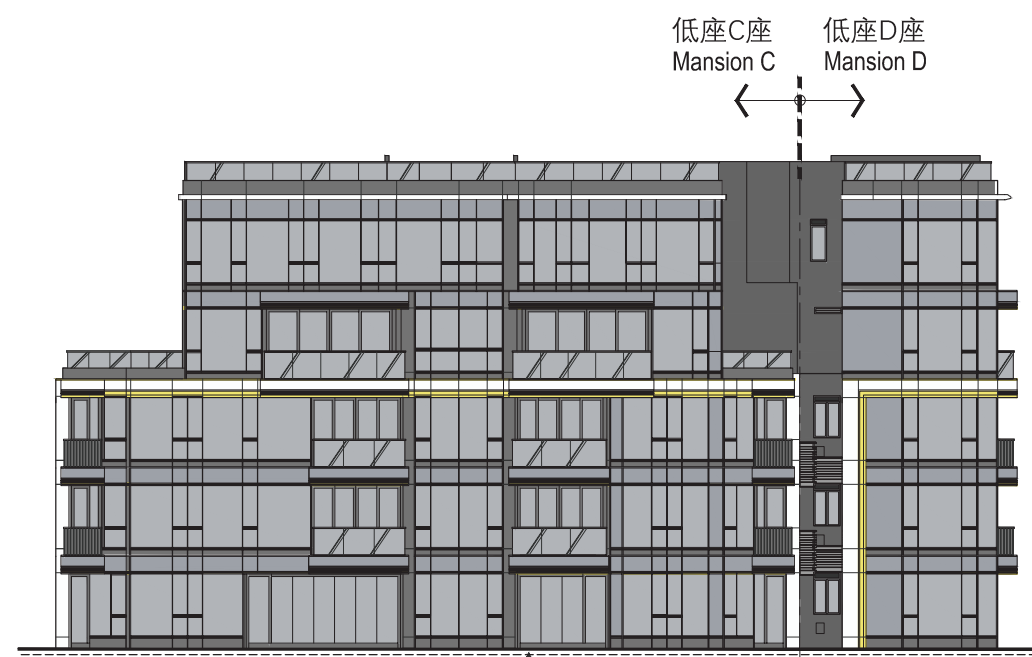
Elevation 1 - Mansion C
立面圖1 - 低座C座



Elevation 2 - Mansion D
立面圖2 - 低座D座



Elevation 3 - Mansion C & Mansion D
立面圖3 - 低座C座及低座D座



Elevation 4 - Mansion C & Mansion D
立面圖4 - 低座C座及低座D座

Authorized Person for the Phase has certified that the elevations shown on these plans:

期數的認可人士證明本圖所顯示的立面：

- (1) are prepared on the basis of the approved building plans for the Phase as of 9 February 2022 and the approved phasing plans for the Phase as of 28 February 2022; and

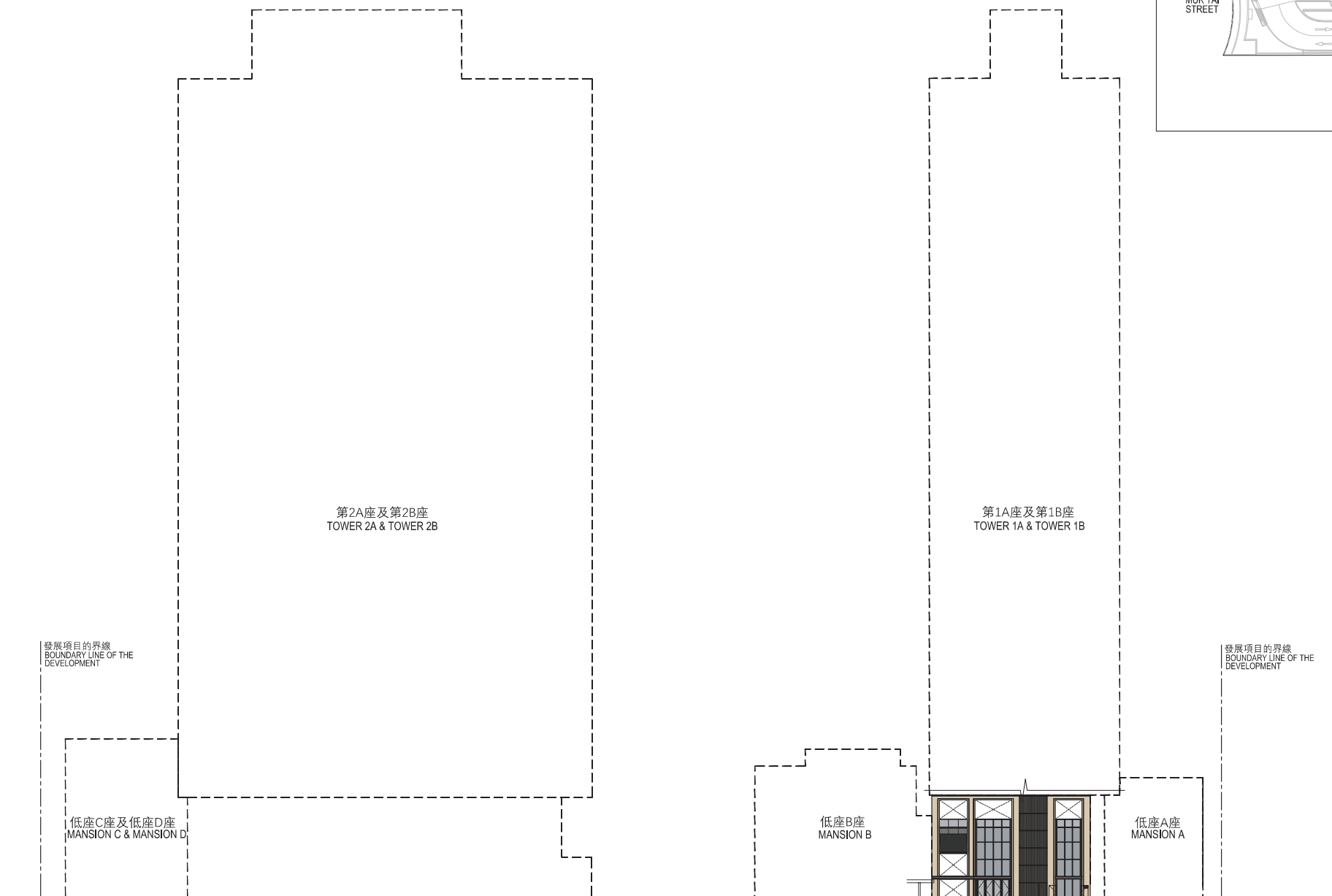
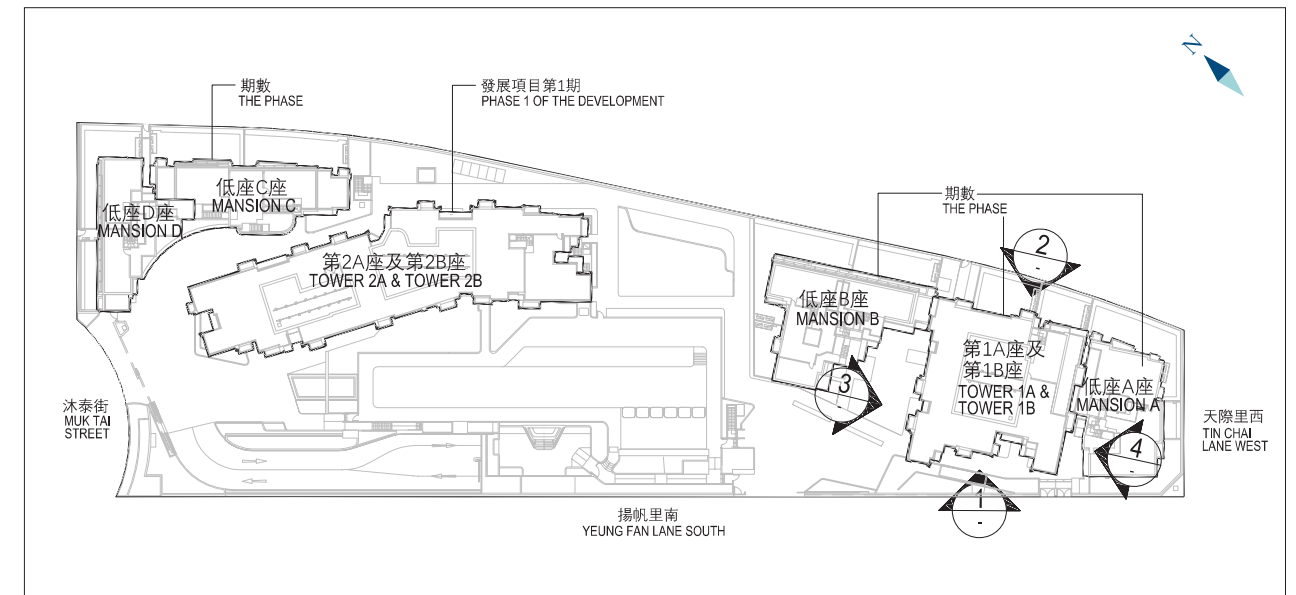
以2022年2月9日的情況為準的期數的經批准的建築圖則及以2022年2月28日的情況為準的期數的經批准的期數圖則為基礎擬備；及

- (2) are in general accordance with the outward appearance of the Phase.

大致上與期數的外觀一致。

PODIUM ELEVATION PLAN 1 平台立面圖1

KEY PLAN 索引圖



Elevation 1
立面圖1

Authorized Person for the Phase has certified that the elevations shown on these plans:

期數的認可人士證明本圖所顯示的立面：

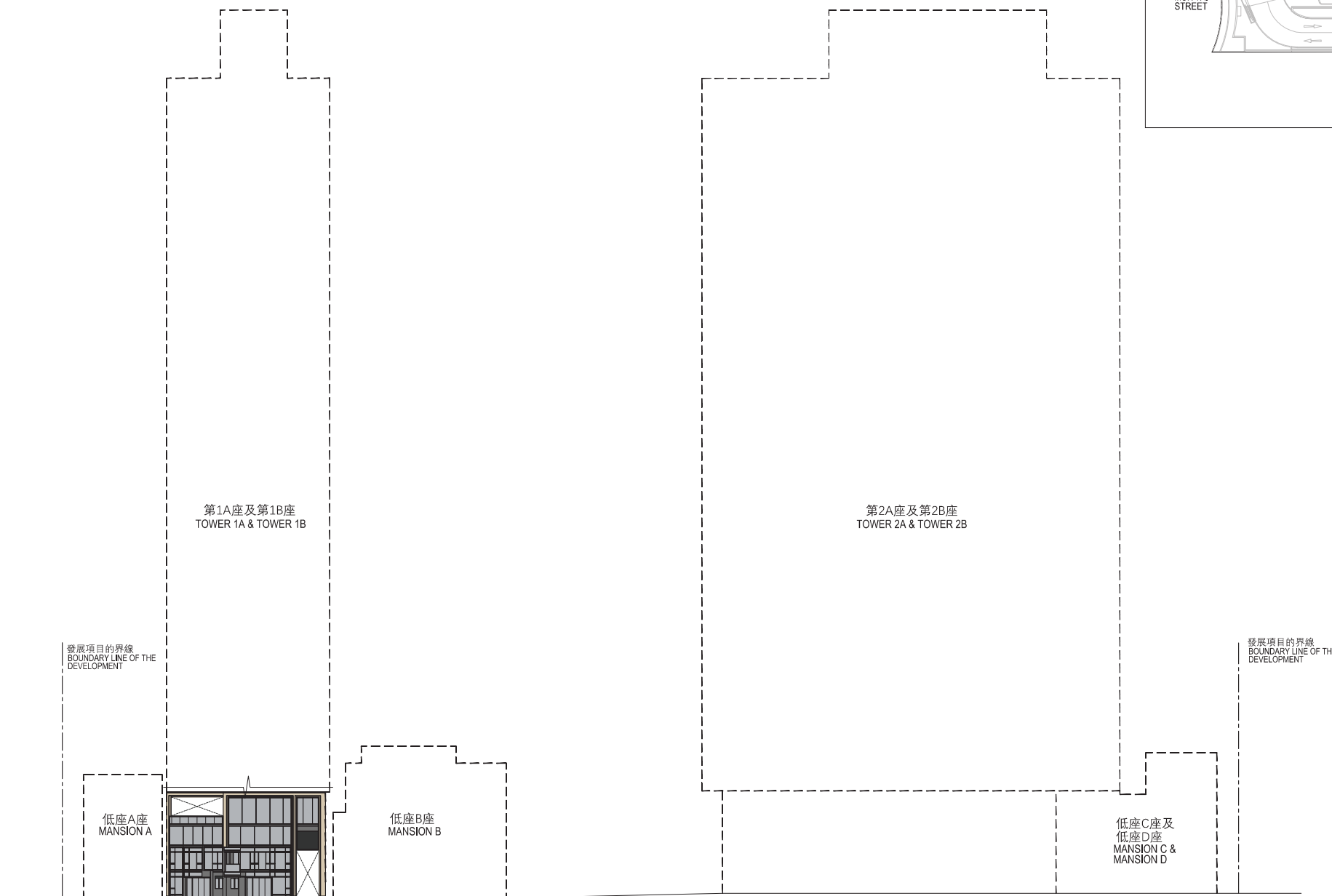
- (1) are prepared on the basis of the approved building plans for the Phase as of 9 February 2022 and the approved phasing plans for the Phase as of 28 February 2022; and

以2022年2月9日的情況為準的期數的經批准的建築圖則及以2022年2月28日的情況為準的期數的經批准的期數圖則為基礎擬備；及

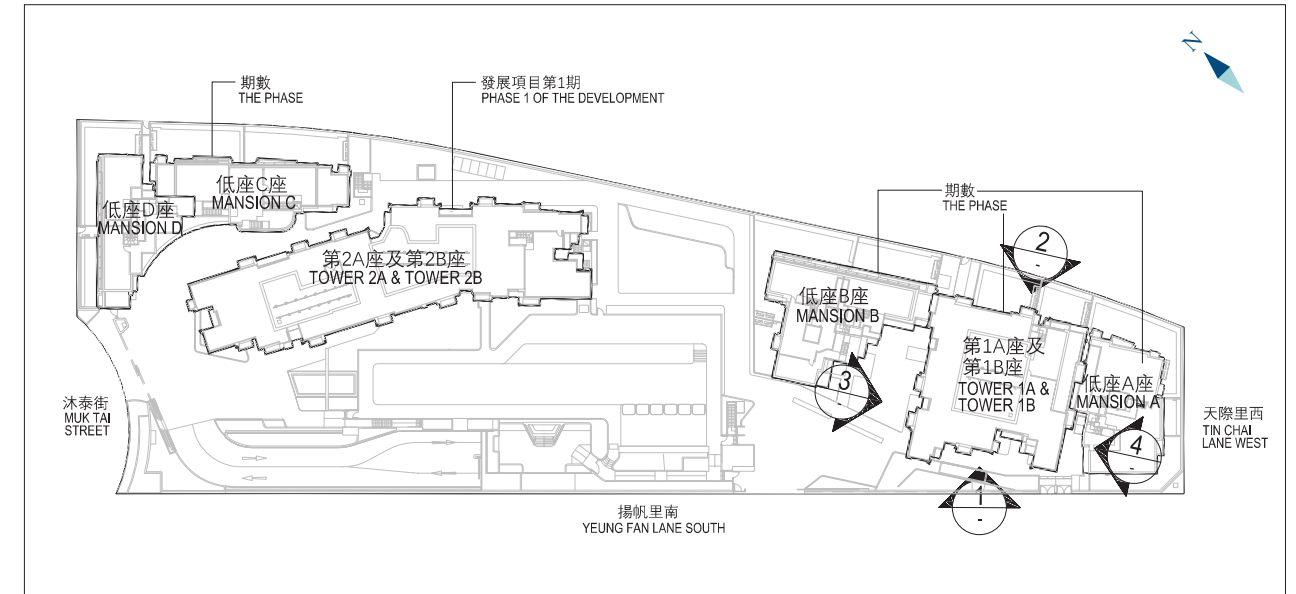
- (2) are in general accordance with the outward appearance of the Phase.
大致上與期數的外觀一致。

PODIUM ELEVATION PLAN 2 平台立面圖2

KEY PLAN 索引圖



Elevation 2
立面圖2



Authorized Person for the Phase has certified that the elevations shown on these plans:

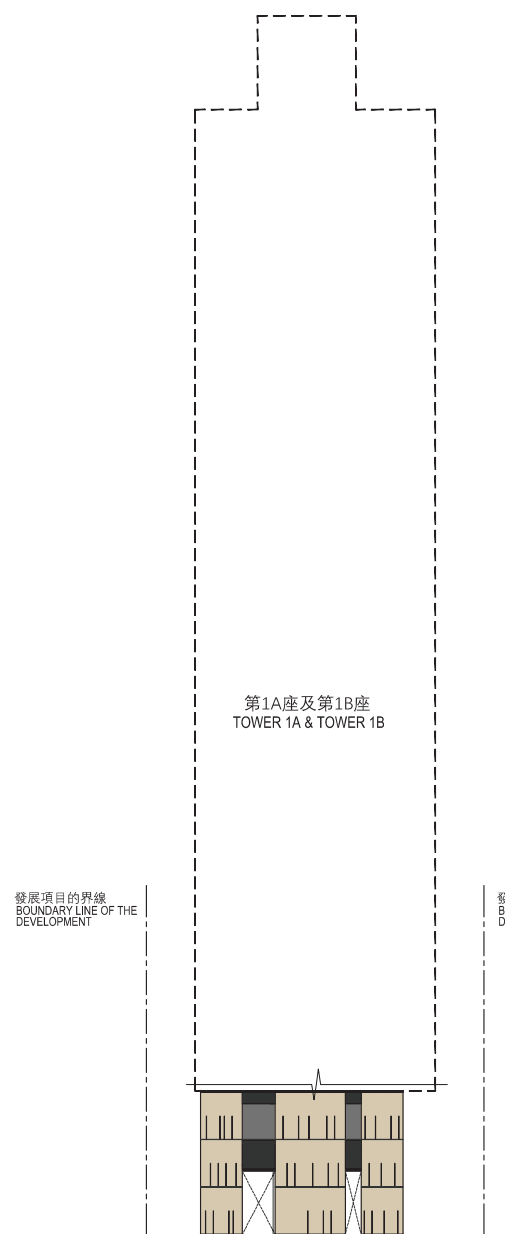
期數的認可人士證明本圖所顯示的立面：

- (1) are prepared on the basis of the approved building plans for the Phase as of 9 February 2022 and the approved phasing plans for the Phase as of 28 February 2022; and

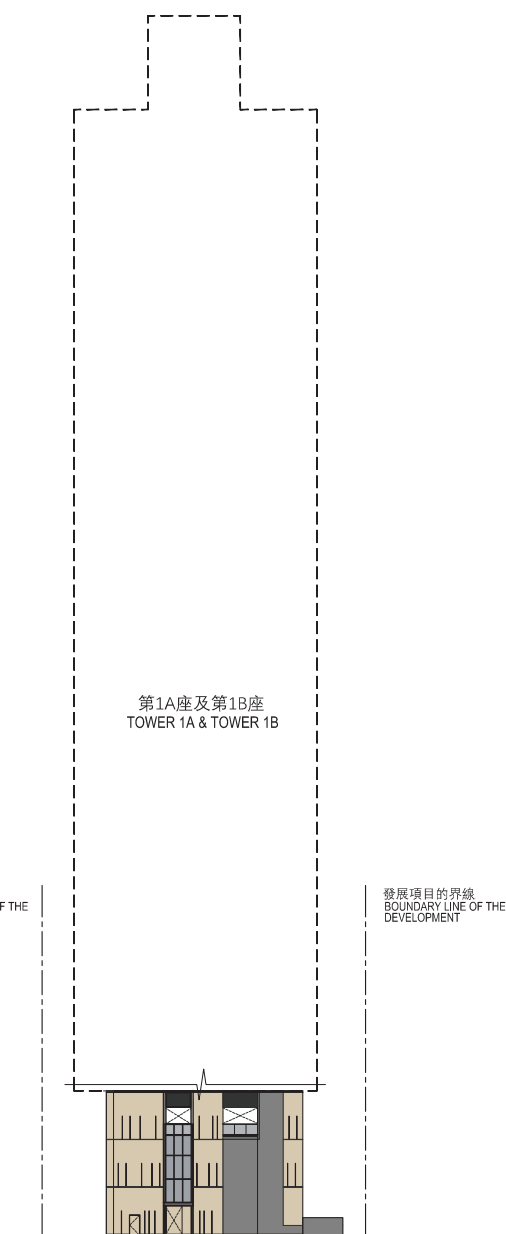
以2022年2月9日的情況為準的期數的經批准的建築圖則及以2022年2月28日的情況為準的期數的經批准的期數圖則為基礎擬備；及

- (2) are in general accordance with the outward appearance of the Phase.
大致上與期數的外觀一致。

PODIUM ELEVATION PLANS 3 & 4 平台立面圖3及4

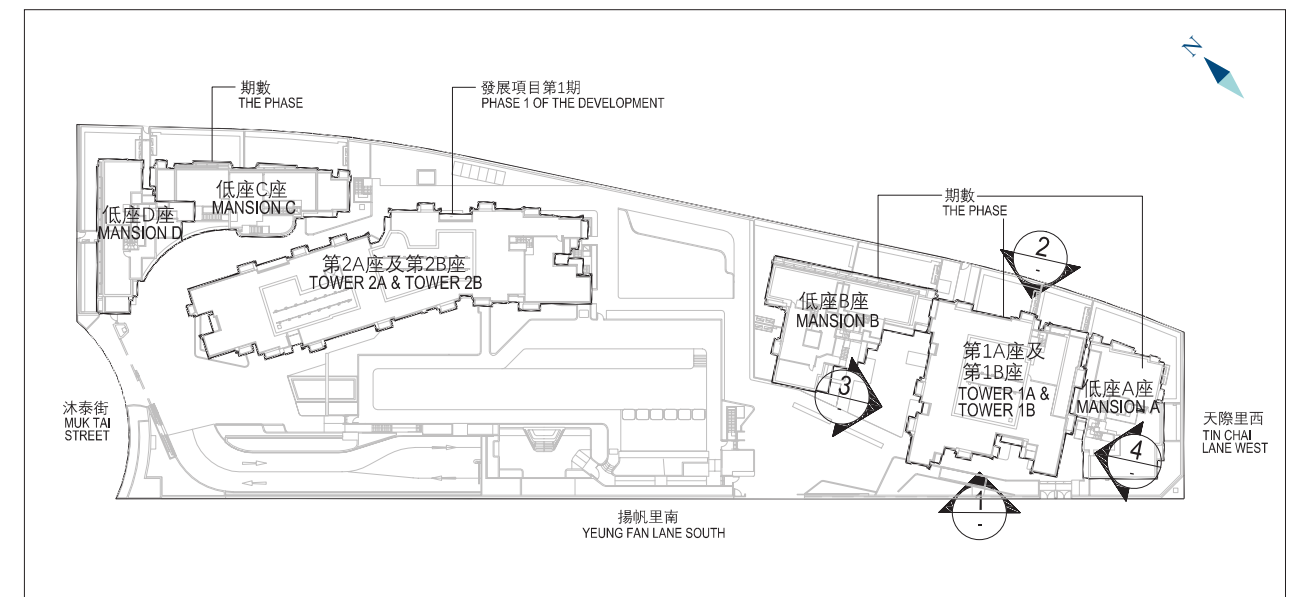


Elevation 3
立面圖3



Elevation 4
立面圖4

KEY PLAN 索引圖



Authorized Person for the Phase has certified that the elevations shown on these plans:

期數的認可人士證明本圖所顯示的立面：

- (1) are prepared on the basis of the approved building plans for the Phase as of 9 February 2022 and the approved phasing plans for the Phase as of 28 February 2022; and

以2022年2月9日的情況為準的期數的經批准的建築圖則及以2022年2月28日的情況為準的期數的經批准的期數圖則為基礎擬備；及

- (2) are in general accordance with the outward appearance of the Phase.
大致上與期數的外觀一致。