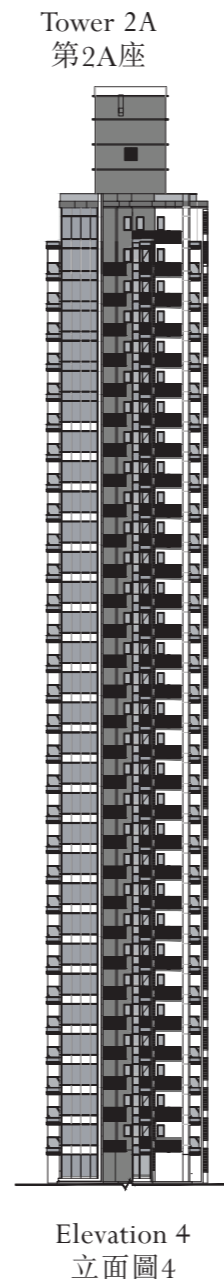
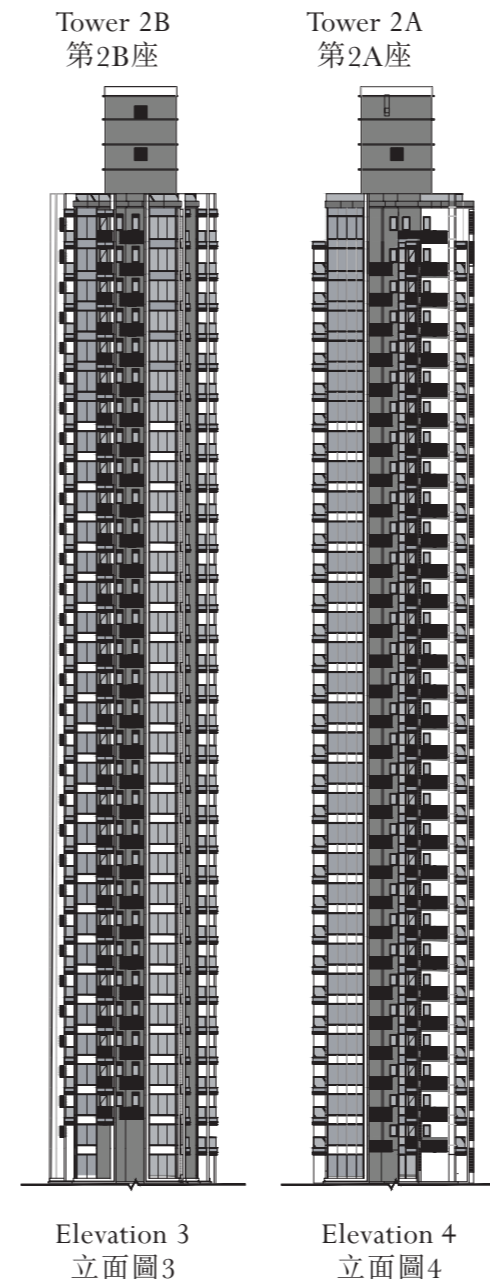
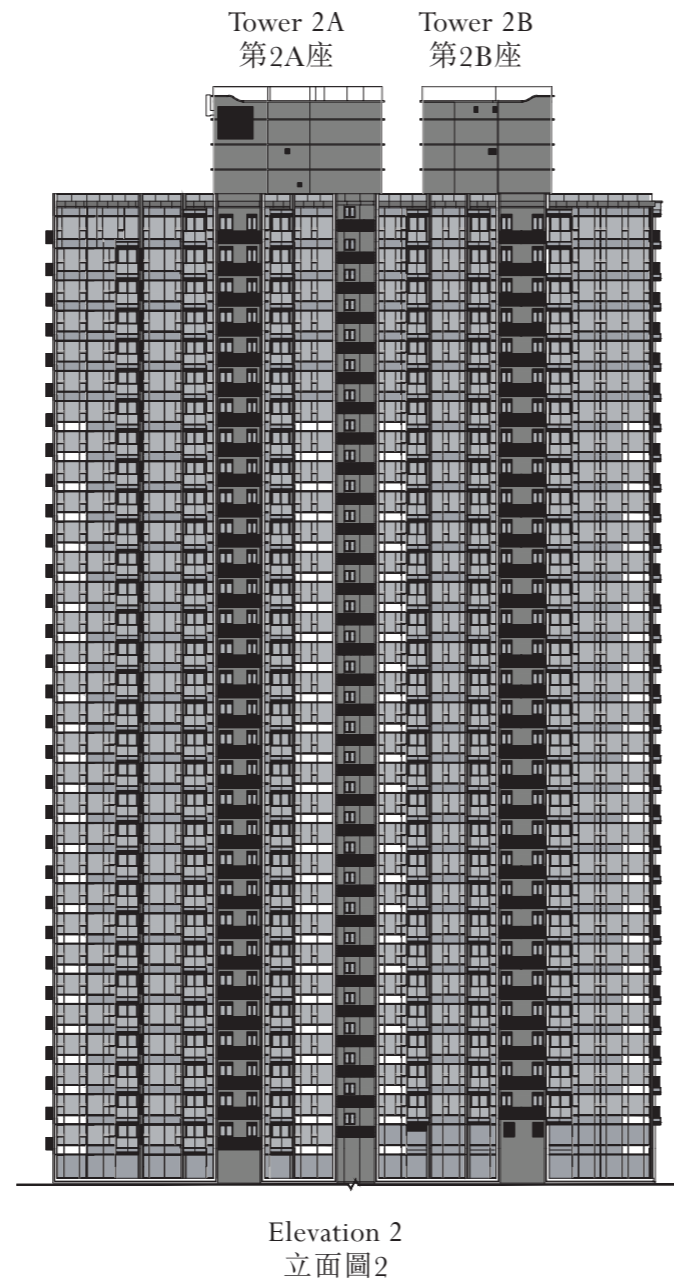
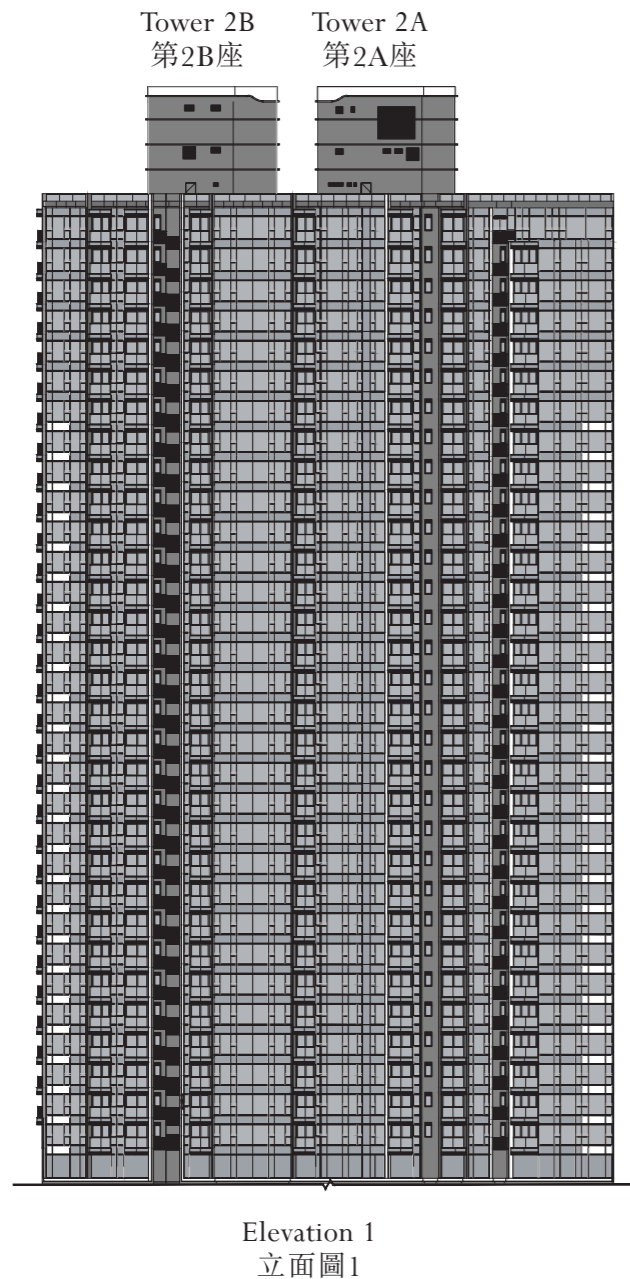
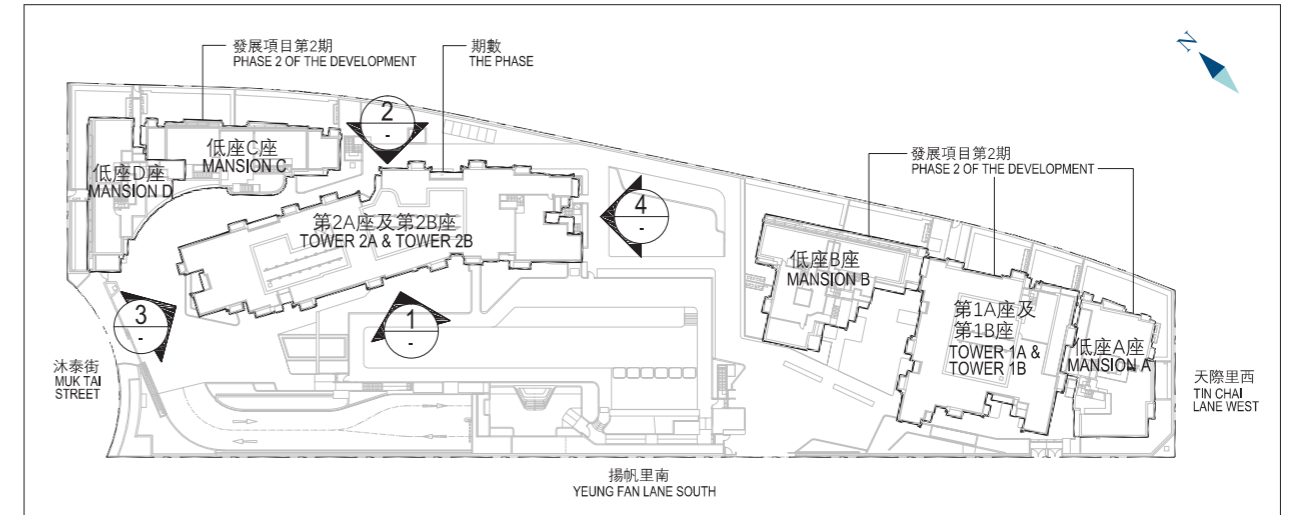


# 20 ELEVATION PLAN 立面圖

## ELEVATION PLANS 1, 2, 3, 4 立面圖1, 2, 3, 4

## KEY PLAN 索引圖



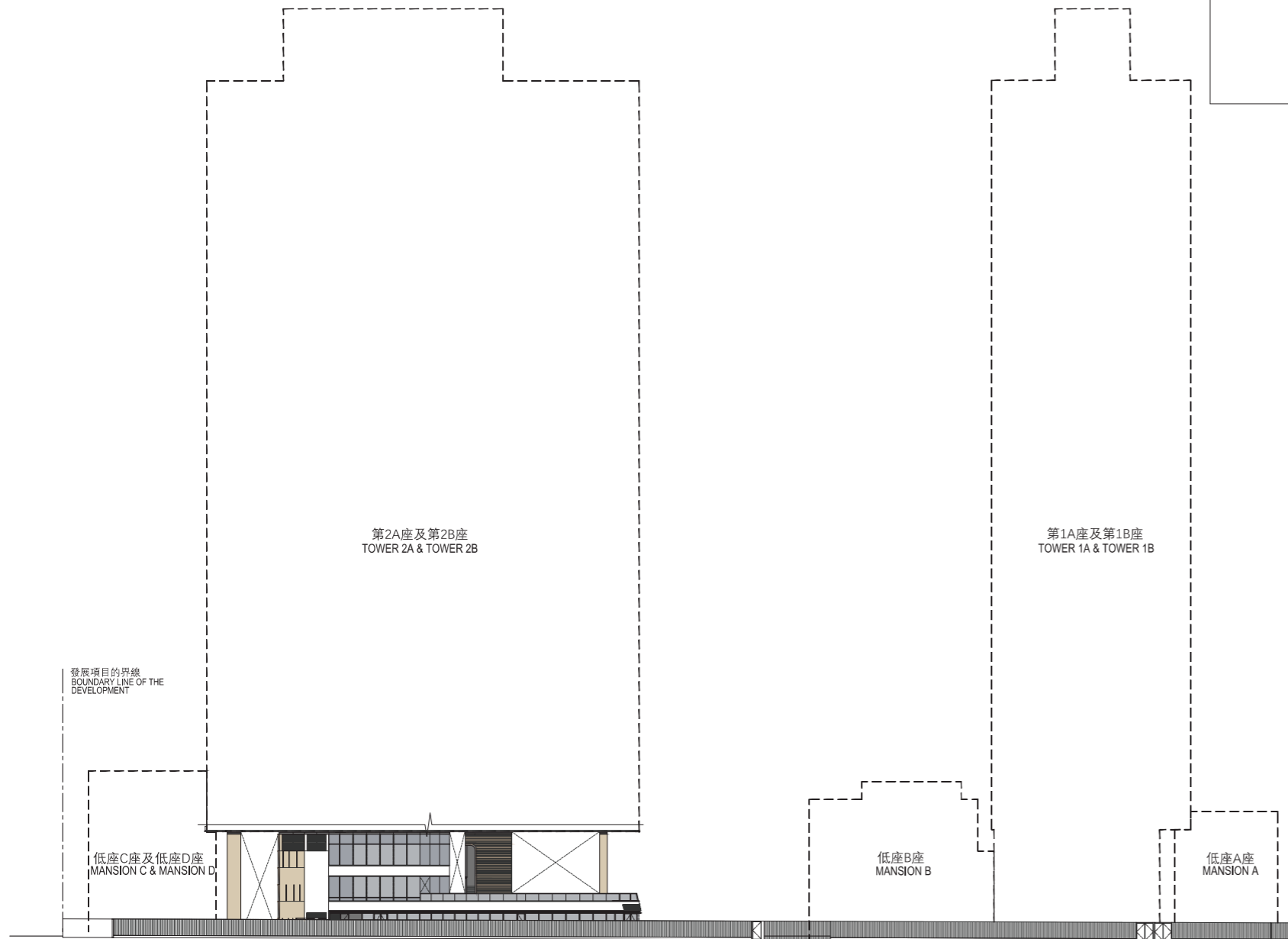
Authorized Person for the Phase has certified that the elevations shown on these plans:

期數的認可人士證明本圖所顯示的立面：

- (1) are prepared on the basis of the approved building plans for the Phase as of 9 February 2022 and the approved phasing plans for the Phase as of 28 February 2022; and  
以2022年2月9日的情況為準的期數的經批准的建築圖則及以2022年2月28日的情況為準的期數的經批准的期數圖則為基礎擬備；及
- (2) are in general accordance with the outward appearance of the Phase.

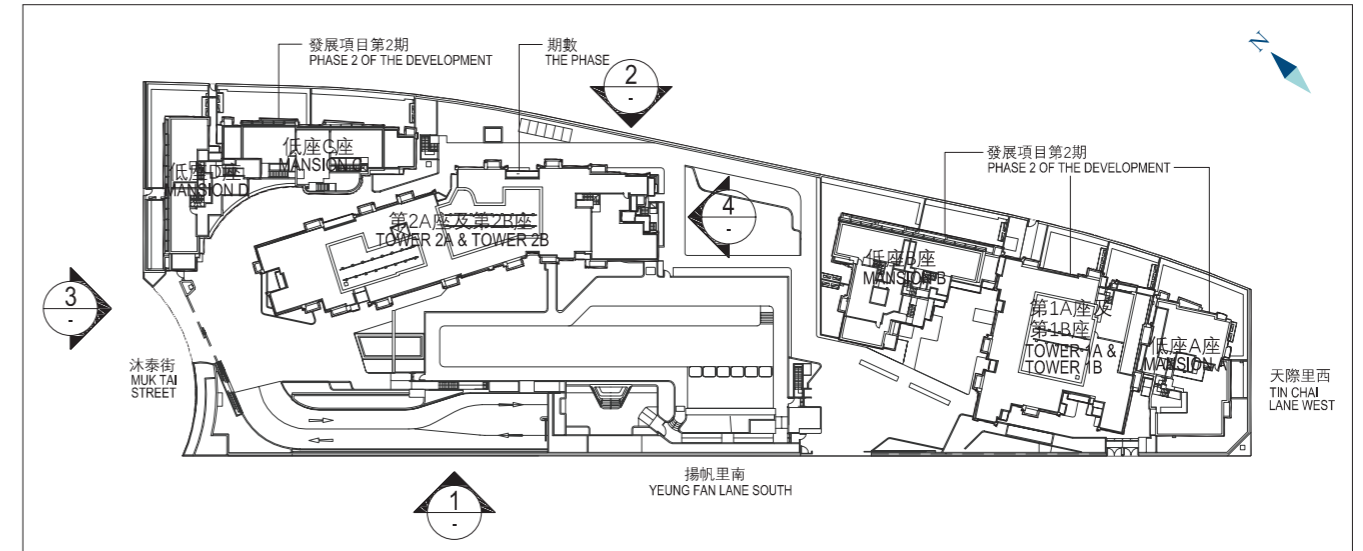
大致上與期數的外觀一致。

## PODIUM ELEVATION PLAN 1 平台立面圖1



Elevation 1  
立面圖1

## KEY PLAN 索引圖



Authorized Person for the Phase has certified that the elevations shown on these plans:

期數的認可人士證明本圖所顯示的立面：

- (1) are prepared on the basis of the approved building plans for the Phase as of 9 February 2022 and the approved phasing plans for the Phase as of 28 February 2022; and

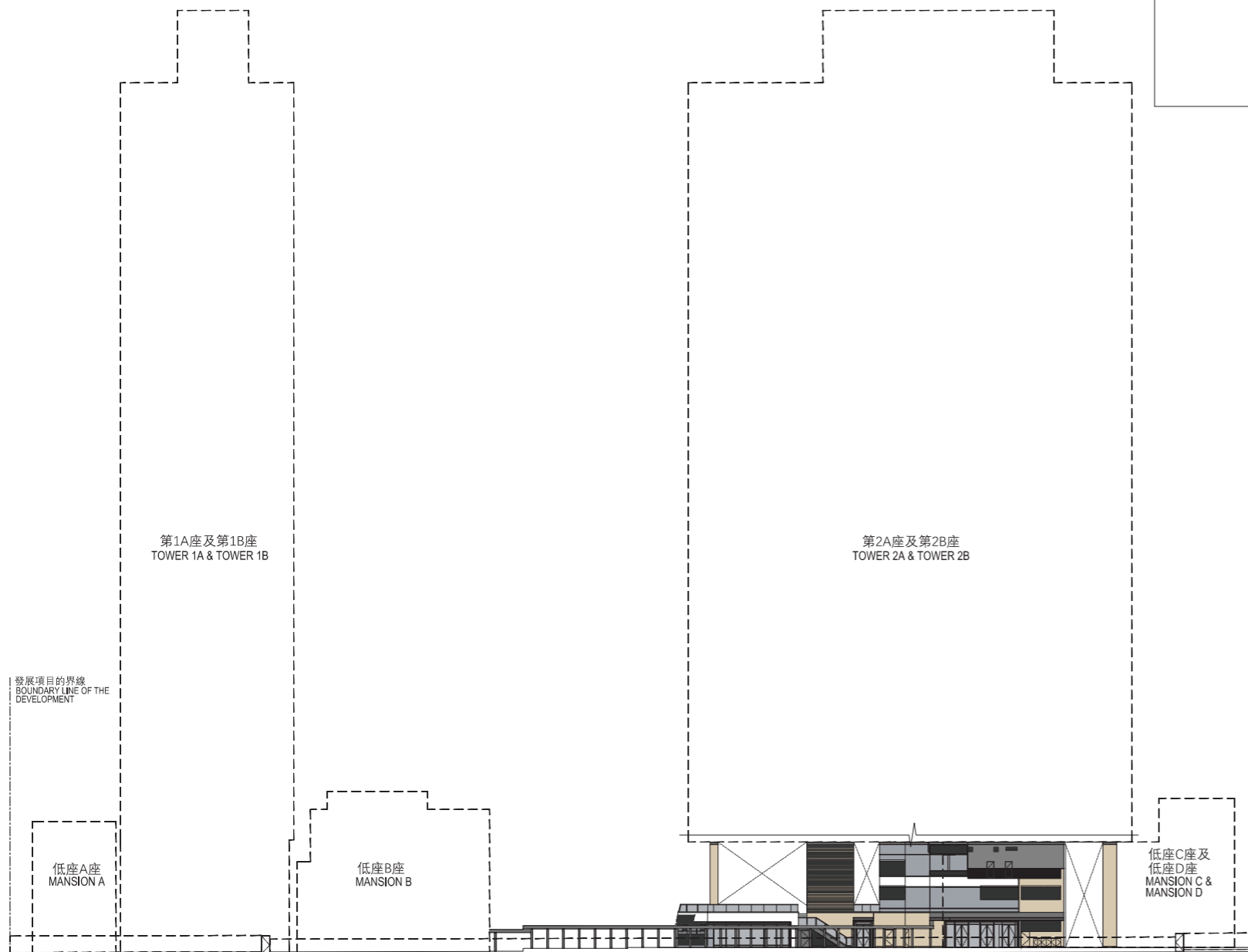
以2022年2月9日的情況為準的期數的經批准的建築圖則及以2022年2月28日的情況為準的期數的經批准的期數圖則為基礎擬備；及

- (2) are in general accordance with the outward appearance of the Phase.

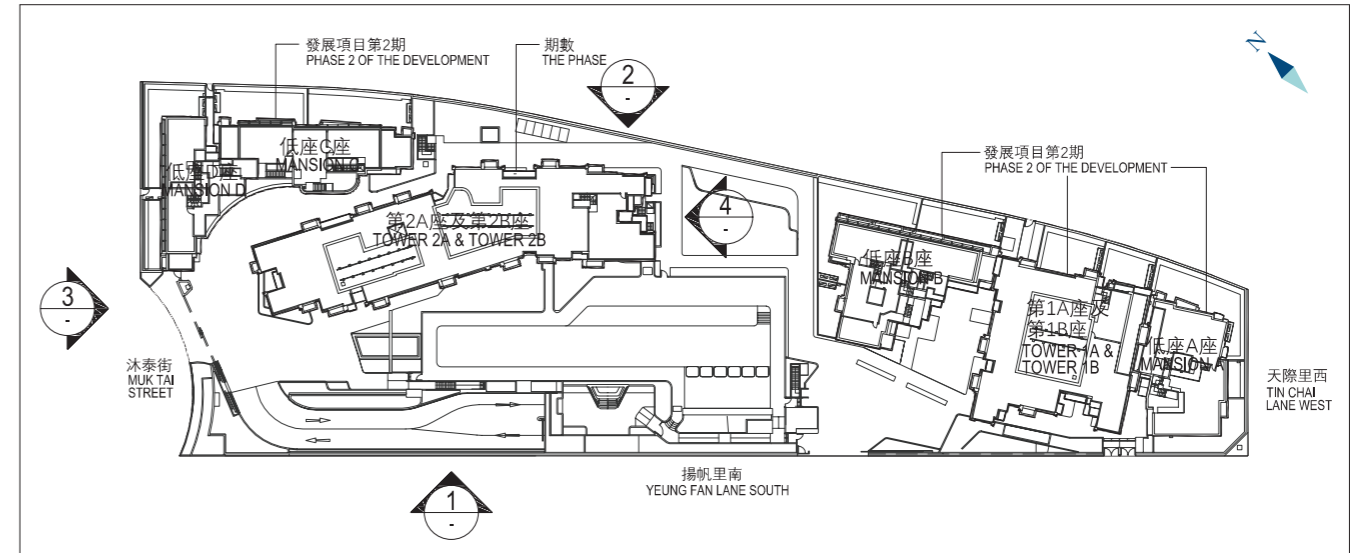
大致上與期數的外觀一致。

## PODIUM ELEVATION PLAN 2 平台立面圖2

## KEY PLAN 索引圖



Elevation 2  
立面圖2



Authorized Person for the Phase has certified that the elevations shown on these plans:

期數的認可人士證明本圖所顯示的立面：

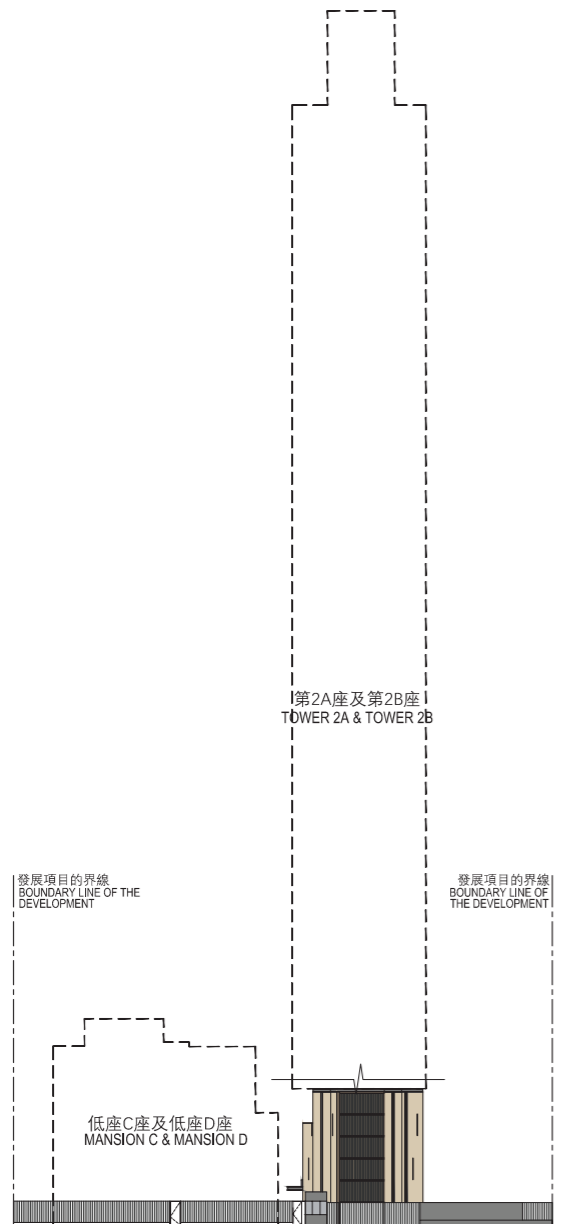
- (1) are prepared on the basis of the approved building plans for the Phase as of 9 February 2022 and the approved phasing plans for the Phase as of 28 February 2022; and  
以2022年2月9日的情況為準的期數的經批准的建築圖則及以2022年2月28日的情況為準的期數的經批准的期數圖則為基礎擬備；及

- (2) are in general accordance with the outward appearance of the Phase.

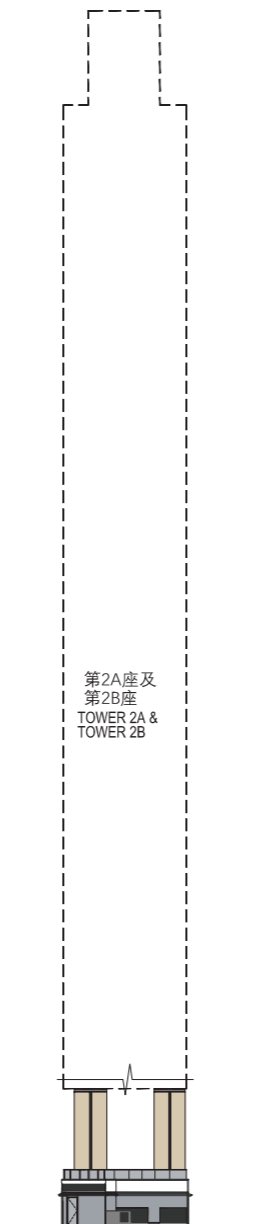
大致上與期數的外觀一致。

# 20 ELEVATION PLAN 立面圖

## PODIUM ELEVATION PLANS 3 & 4 平台立面圖3及4

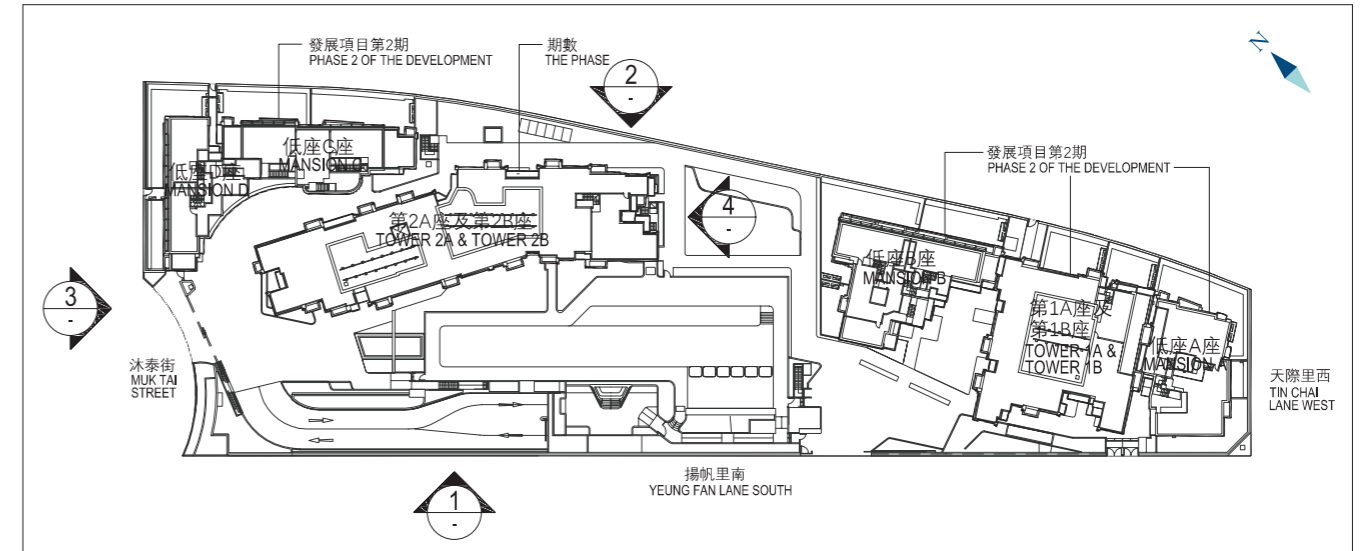


Elevation 3  
立面圖3



Elevation 4  
立面圖4

## KEY PLAN 索引圖



Authorized Person for the Phase has certified that the elevations shown on these plans:

期數的認可人士證明本圖所顯示的立面：

- (1) are prepared on the basis of the approved building plans for the Phase as of 9 February 2022 and the approved phasing plans for the Phase as of 28 February 2022; and

以2022年2月9日的情況為準的期數的經批准的建築圖則及以2022年2月28日的情況為準的期數的經批准的期數圖則為基礎擬備；及

- (2) are in general accordance with the outward appearance of the Phase.

大致上與期數的外觀一致。