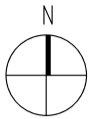
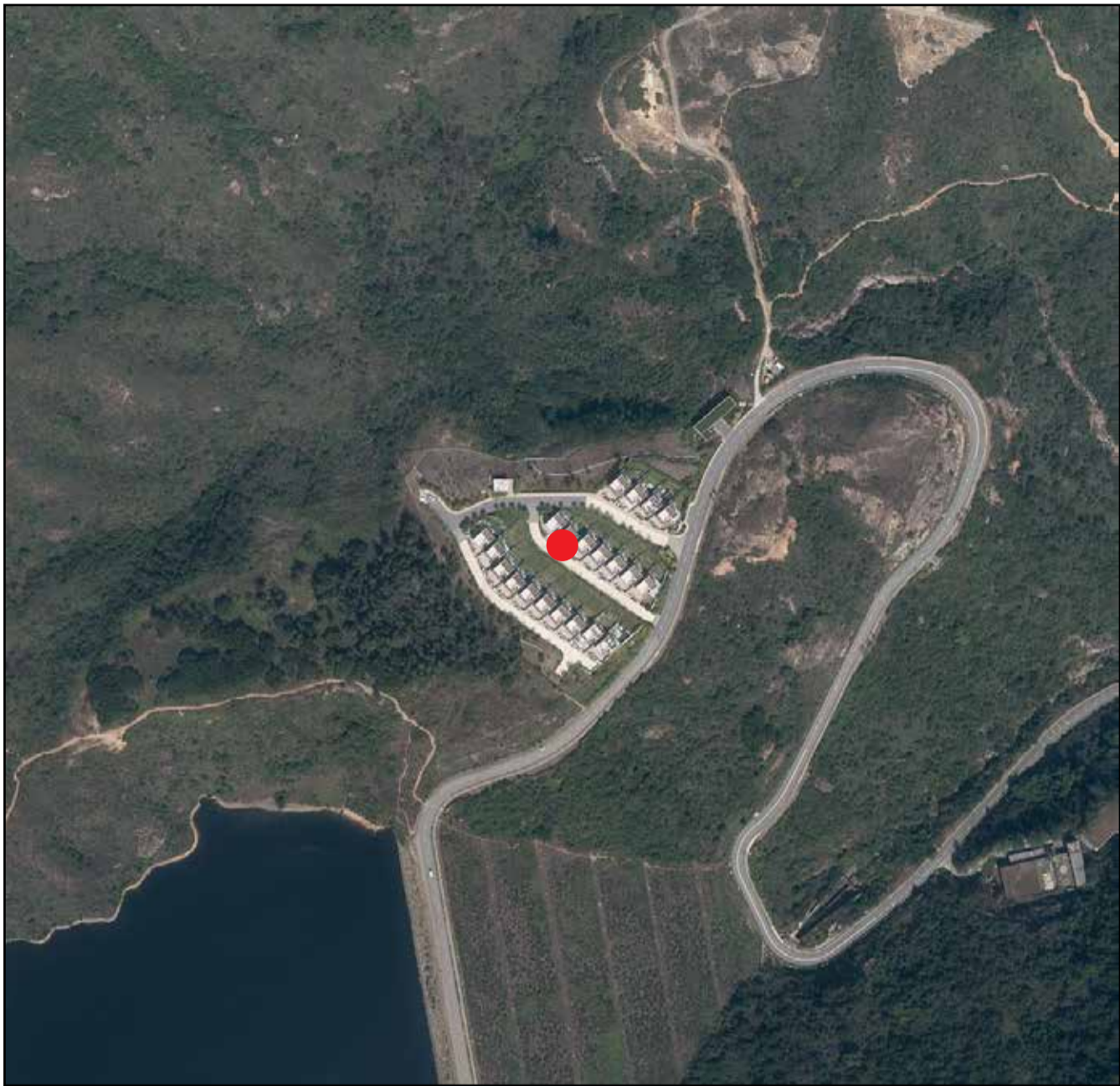


# AERIAL PHOTOGRAPH OF THE PHASE

## 期數的鳥瞰照片



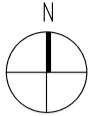
● Location of the Phase  
期數的位置

- Notes:
1. Adopted from the aerial photograph taken by the Survey and Mapping Office of Lands Department at a flying height of 6,000 feet, photo No. E152347C, dated 26/2/2022.
  2. Survey and Mapping Office, Lands Department, The Government of HKSAR © copyright reserved - reproduction by permission only.
  3. The aerial photograph may show more than the area required under the Residential Properties (First-hand Sales) Ordinance due to technical reasons.

- 備註：
1. 摘錄自地政總署測繪處於2022年2月26日在6,000呎飛行高度拍攝之鳥瞰照片，編號為E152347C。
  2. 香港特別行政區政府地政總署測繪處版權所有，未經許可，不得複製。
  3. 由於技術原因，鳥瞰照片可能顯示多於《一手住宅物業銷售條例》所要求顯示的範圍。

# AERIAL PHOTOGRAPH OF THE PHASE

## 期數的鳥瞰照片



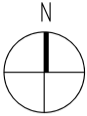
● Location of the Phase  
期數的位置

- Notes:
- Adopted from the aerial photograph taken by the Survey and Mapping Office of Lands Department at a flying height of 6,900 feet, photo No. E217568C, dated 11/1/2024.
  - Survey and Mapping Office, Lands Department, The Government of HKSAR © copyright reserved - reproduction by permission only.
  - The aerial photograph may show more than the area required under the Residential Properties (First-hand Sales) Ordinance due to technical reasons.

- 備註：
- 摘錄自地政總署測繪處於2024年1月11日在6,900呎飛行高度拍攝之鳥瞰照片，編號為E217568C。
  - 香港特別行政區政府地政總署測繪處版權所有，未經許可，不得複製。
  - 由於技術原因，鳥瞰照片可能顯示多於《一手住宅物業銷售條例》所要求顯示的範圍。

# AERIAL PHOTOGRAPH OF THE PHASE

## 期數的鳥瞰照片



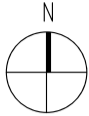
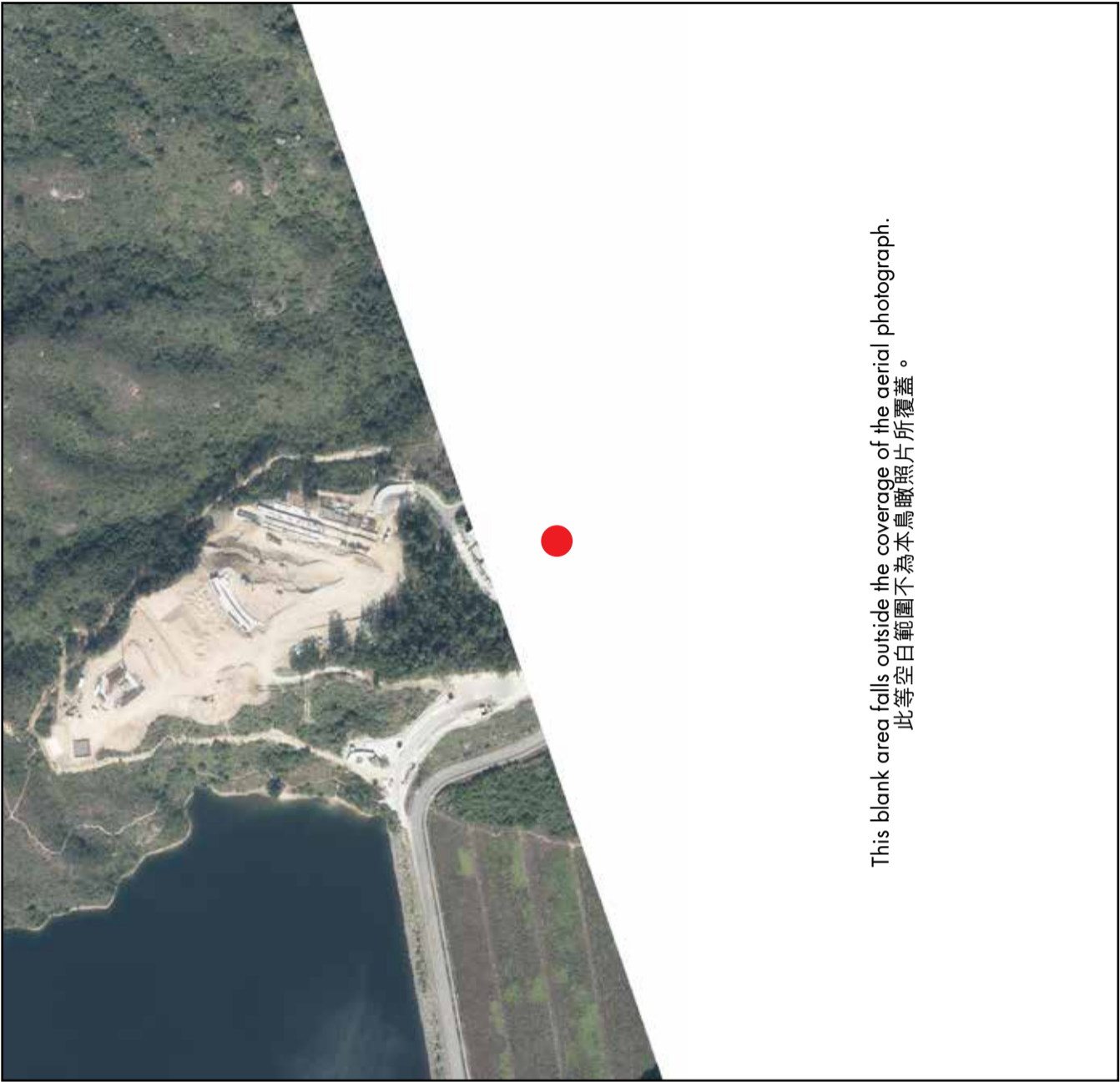
● Location of the Phase  
期數的位置

- Notes:
- Adopted from the aerial photograph taken by the Survey and Mapping Office of Lands Department at a flying height of 6,900 feet, photo No. E217570C, dated 11/1/2024.
  - Survey and Mapping Office, Lands Department, The Government of HKSAR © copyright reserved - reproduction by permission only.
  - The aerial photograph may show more than the area required under the Residential Properties (First-hand Sales) Ordinance due to technical reasons.

- 備註：
- 摘錄自地政總署測繪處於2024年1月11日在6,900呎飛行高度拍攝之鳥瞰照片，編號為E217570C。
  - 香港特別行政區政府地政總署測繪處版權所有，未經許可，不得複製。
  - 由於技術原因，鳥瞰照片可能顯示多於《一手住宅物業銷售條例》所要求顯示的範圍。

# AERIAL PHOTOGRAPH OF THE PHASE

## 期數的鳥瞰照片



This blank area falls outside the coverage of the aerial photograph.  
此等空白範圍不為本鳥瞰照片所覆蓋。

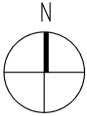
● Location of the Phase  
期數的位置

- Notes:
- 1. Adopted from the aerial photograph taken by the Survey and Mapping Office of Lands Department at a flying height of 6,900 feet, photo No. E214824C, dated 10/1/2024.
  - 2. Survey and Mapping Office, Lands Department, The Government of HKSAR © copyright reserved - reproduction by permission only.
  - 3. The aerial photograph may show more than the area required under the Residential Properties (First-hand Sales) Ordinance due to technical reasons.

- 備註：
- 1. 摘錄自地政總署測繪處於2024年1月10日在6,900呎飛行高度拍攝之鳥瞰照片，編號為E214824C。
  - 2. 香港特別行政區政府地政總署測繪處版權所有，未經許可，不得複製。
  - 3. 由於技術原因，鳥瞰照片可能顯示多於《一手住宅物業銷售條例》所要求的範圍。

# AERIAL PHOTOGRAPH OF THE PHASE

## 期數的鳥瞰照片



● Location of the Phase  
期數的位置

- Notes:
- Adopted from the aerial photograph taken by the Survey and Mapping Office of Lands Department at a flying height of 6,900 feet, photo No. E214821C, dated 10/1/2024.
  - Survey and Mapping Office, Lands Department, The Government of HKSAR © copyright reserved - reproduction by permission only.
  - The aerial photograph may show more than the area required under the Residential Properties (First-hand Sales) Ordinance due to technical reasons.

- 備註：
- 摘錄自地政總署測繪處於2024年1月10日在6,900呎飛行高度拍攝之鳥瞰照片，編號為E214821C。
  - 香港特別行政區政府地政總署測繪處版權所有，未經許可，不得複製。
  - 由於技術原因，鳥瞰照片可能顯示多於《一手住宅物業銷售條例》所要求的範圍。