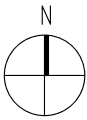
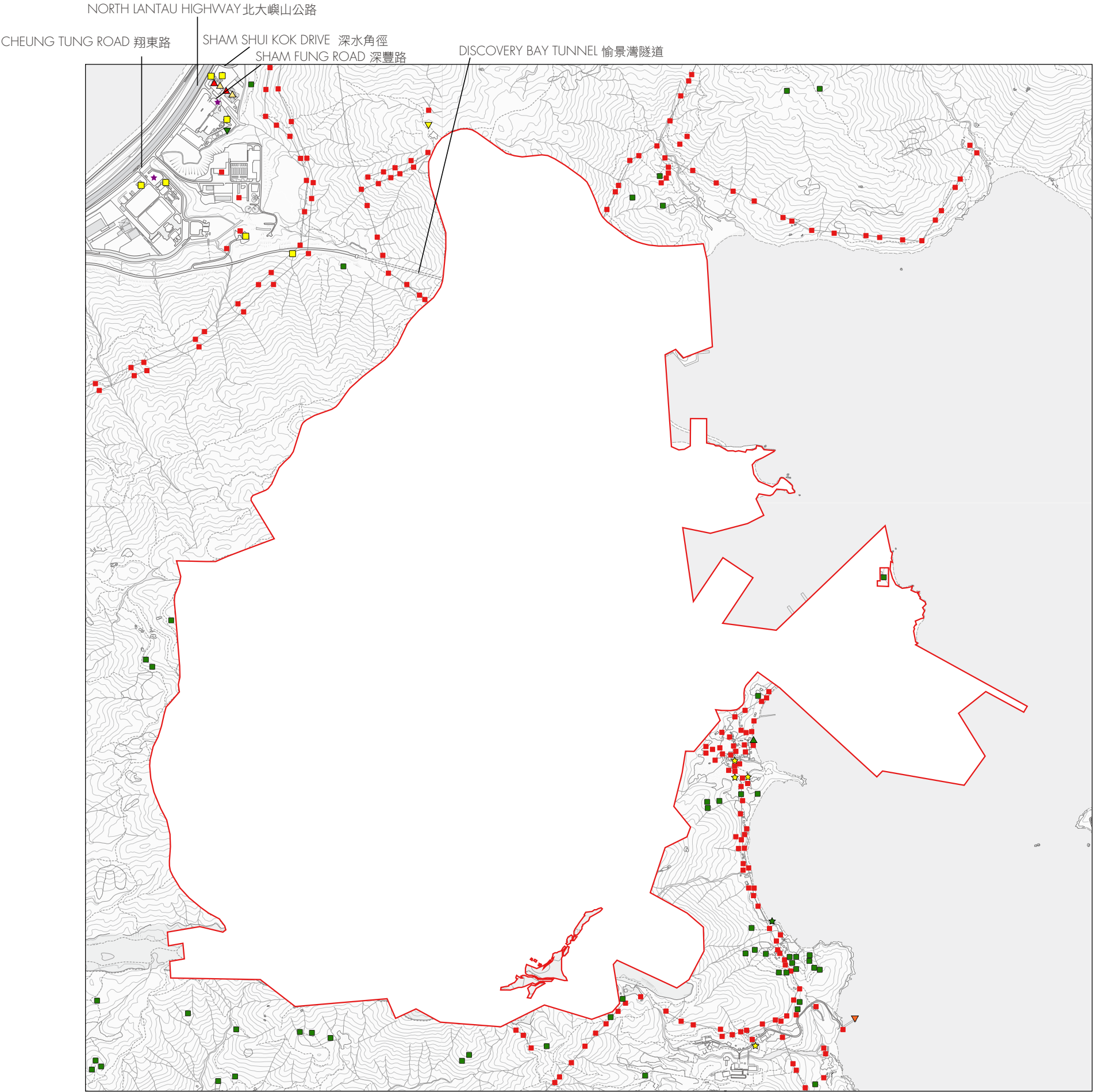


LOCATION PLAN OF THE DEVELOPMENT
發展項目的所在位置圖



Boundary line of the Development
發展項目的邊界線

Scale: 0M/米 250M/米
比例:

For Legend and Notes to this Plan, please refer to p.12.
有關此圖的圖例及備註，請參閱第12頁。

LOCATION PLAN OF THE DEVELOPMENT
發展項目的所在位置圖

Legend

圖例

-  Bus Depot
巴士車廠
-  Sewage Treatment Works and Facilities
污水處理廠及設施
-  Power Plant (including Electricity Sub-stations)
發電廠 (包括電力分站)
-  Cemetery
墳場
-  Refuse Collection Point
垃圾收集站
-  Public Transport Terminal (including a rail station)
公共交通總站 (包括鐵路車站)
-  Public Utility Installation
公用事業設施裝置
-  Religious Institution (including a Church, a Temple and a Tsz Tong)
宗教場所 (包括教堂、廟宇及祠堂)
-  Petrol Filling Station
油站
-  Oil Depot
油庫
-  Helicopter Landing Pad
直升機升降坪
-  Public Convenience
公廁

Notes:

1. The above Location Plan is made with reference to the Digital Topographic Map No. T10-NW-C dated 13 February 2025, Digital Topographic Map No. T10-NW-D dated 19 December 2024, Digital Topographic Map No. T10-SW-A dated 27 February 2025 and Digital Topographic Map No. T10-SW-B dated 13 March 2025 from Survey and Mapping Office of the Lands Department with adjustments where necessary.
2. The Map is provided by the CSDI Portal and intellectual property rights are owned by the Government of the HKSAR.
3. The plan may show more than the area required under the Residential Properties (First-hand Sales) Ordinance due to technical reasons.
4. The Vendor advises prospective purchasers to conduct an on-site visit for a better understanding of the development site, its surrounding environment and the public facilities nearby.

備註：

1. 上述發展項目的所在位置圖參考於2025年2月13日修訂之數碼地形圖編號T10-NW-C，於2024年12月19日修訂之數碼地形圖編號T10-NW-D，於2025年2月27日修訂之數碼地形圖編號T10-SW-A及於2025年3月13日修訂之數碼地形圖編號T10-SW-B有需要處經修正處理。
2. 地圖由空間數據共享平台提供，香港特別行政區政府為知識產權擁有人。
3. 由於技術原因，上圖可能顯示多於《一手住宅物業銷售條例》所要求顯示的面積。
4. 賣方建議準買方到該發展地盤作實地考察，以對該發展地盤、其周邊地區環境及附近的公共設施有較佳了解。