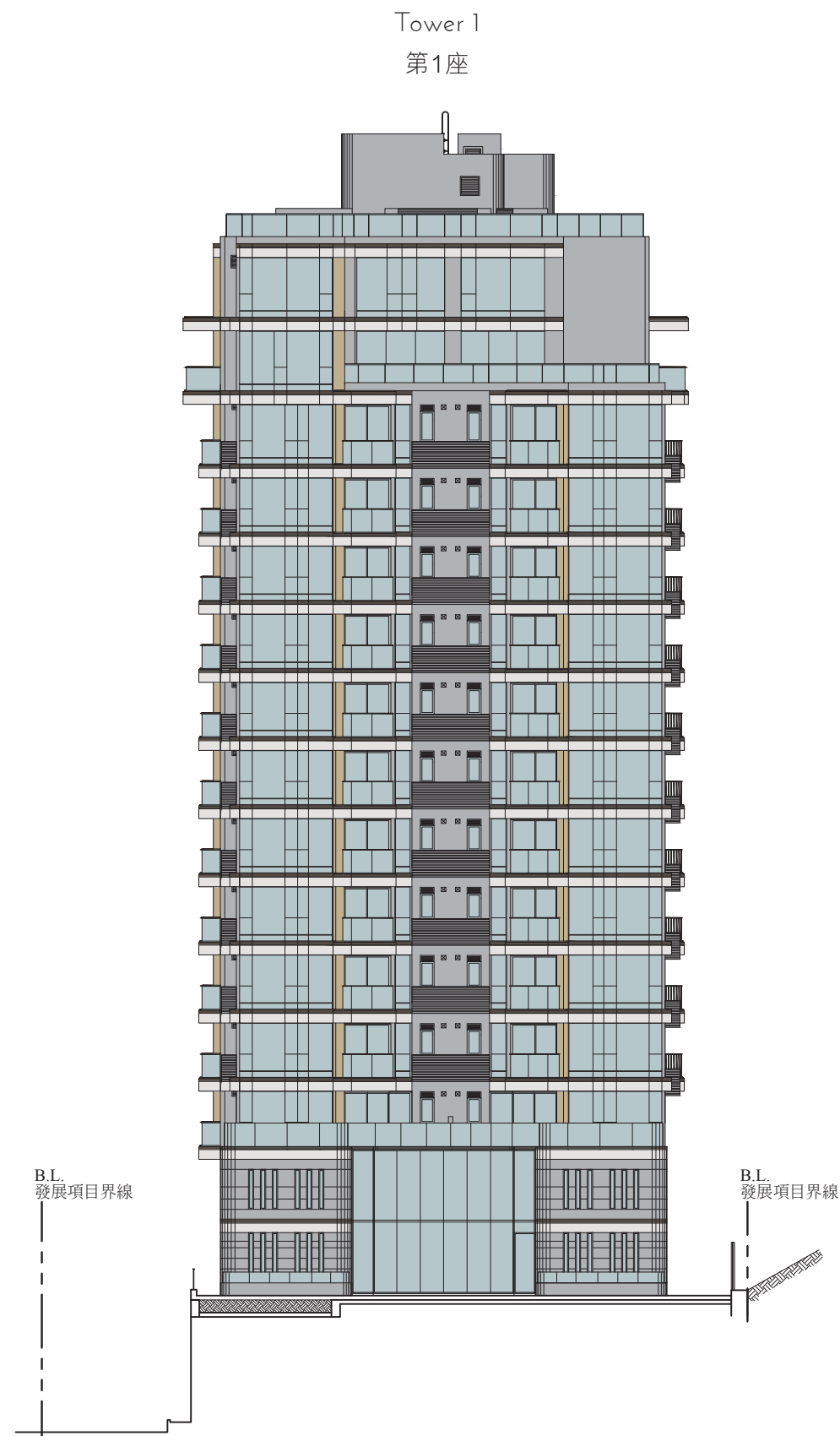
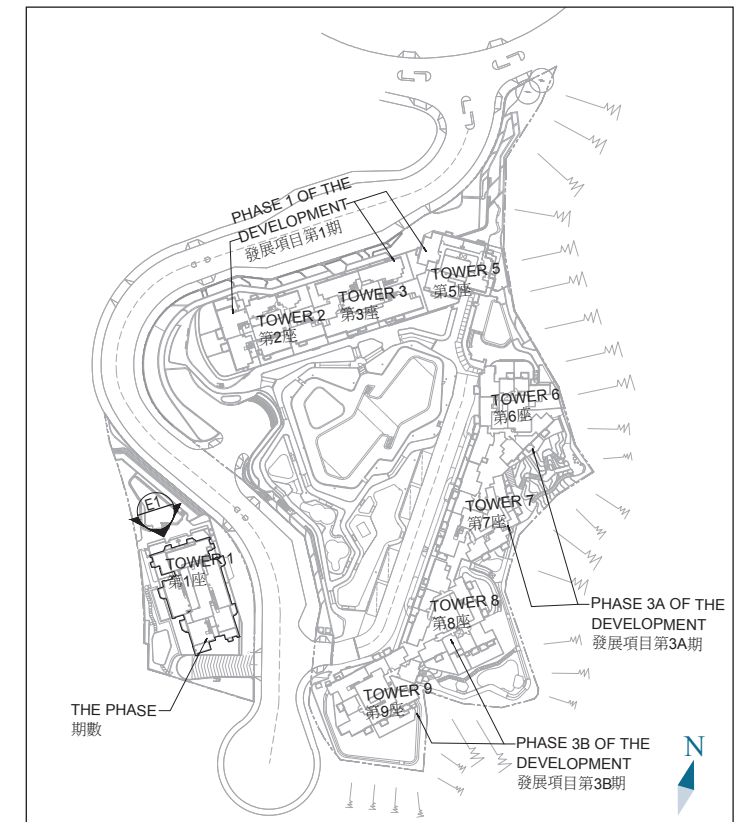


Elevation 1  
立面圖 1



Key Plan  
索引圖



### Legend 圖例：

B.L. Boundary of the Development  
發展項目的界線

Authorized Person for the Phase has certified that the elevations shown on these plans:

期數的認可人士證明本圖所顯示的立面：

- (1) are prepared on the basis of the approved building plans for the Phase as of 4 August 2021 and the approved phasing plans for the Phase as of 20 July 2021; and

以2021年8月4日的情況為準的期數的經批准的建築圖則及以2021年7月20日的情況為準的期數的經批准的期數圖則為基礎擬備；及

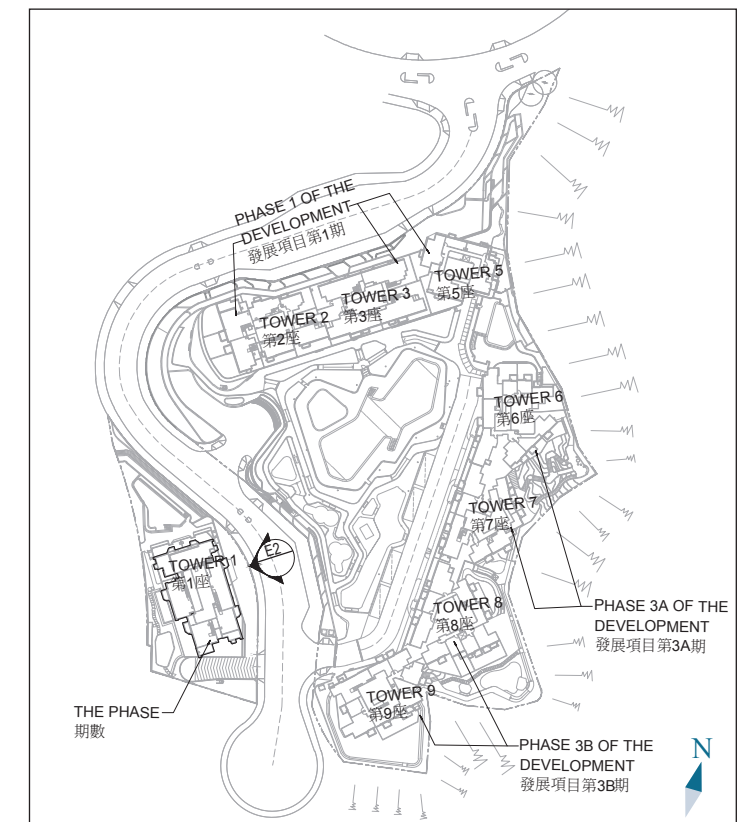
- (2) are in general accordance with the outward appearance of the Phase.

大致上與期數的外觀一致。

Elevation 2  
立面圖 2



Key Plan  
索引圖



## Legend 圖例：

B.L. Boundary of the Development  
發展項目的界線

Authorized Person for the Phase has certified that the elevations shown on these plans:

期數的認可人士證明本圖所顯示的立面：

- (1) are prepared on the basis of the approved building plans for the Phase as of 4 August 2021 and the approved phasing plans for the Phase as of 20 July 2021; and

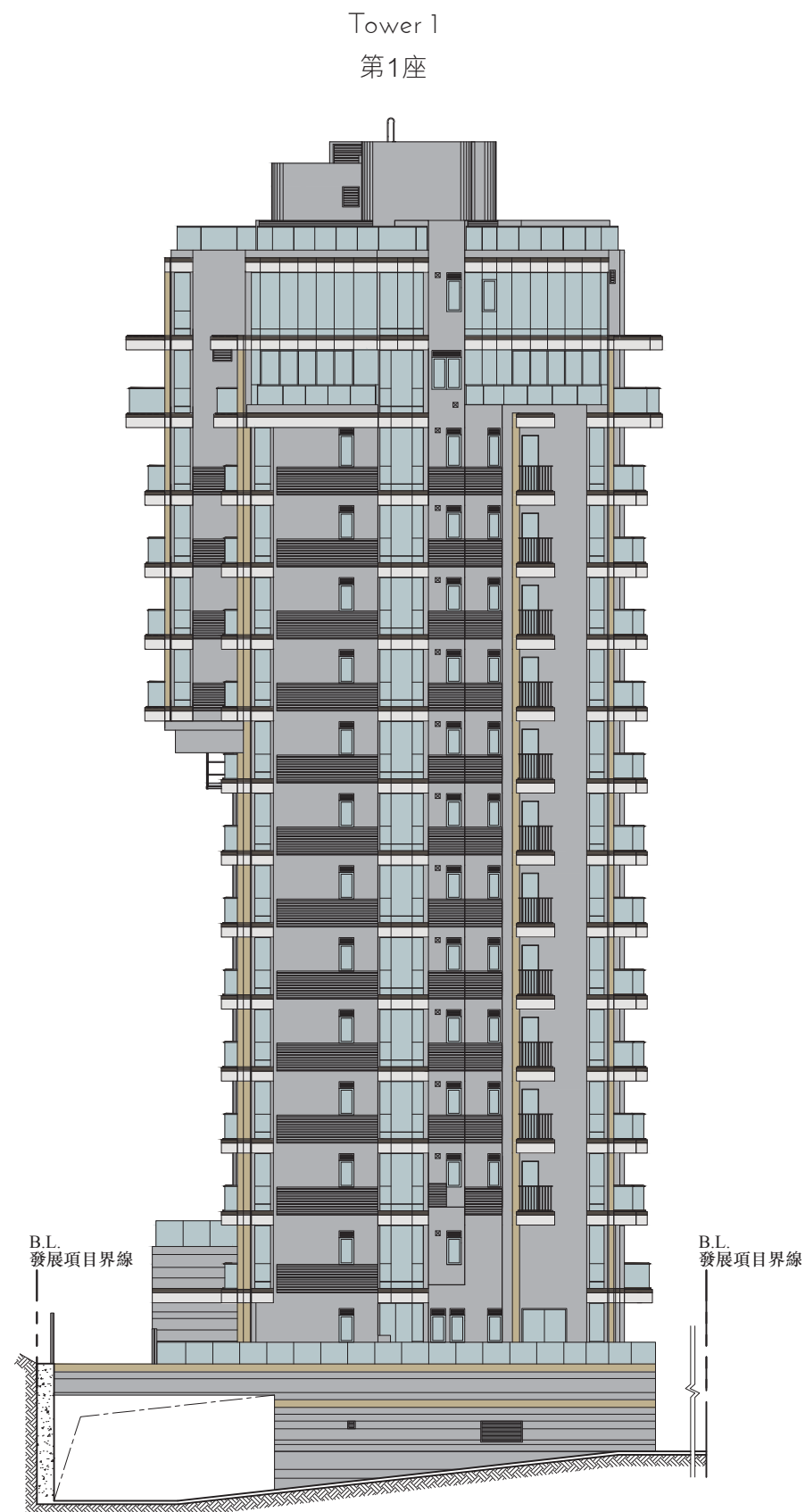
以2021年8月4日的情況為準的期數的經批准的建築圖則及以2021年7月20日的情況為準的期數的經批准的期數圖則為基礎擬備；及

- (2) are in general accordance with the outward appearance of the Phase.

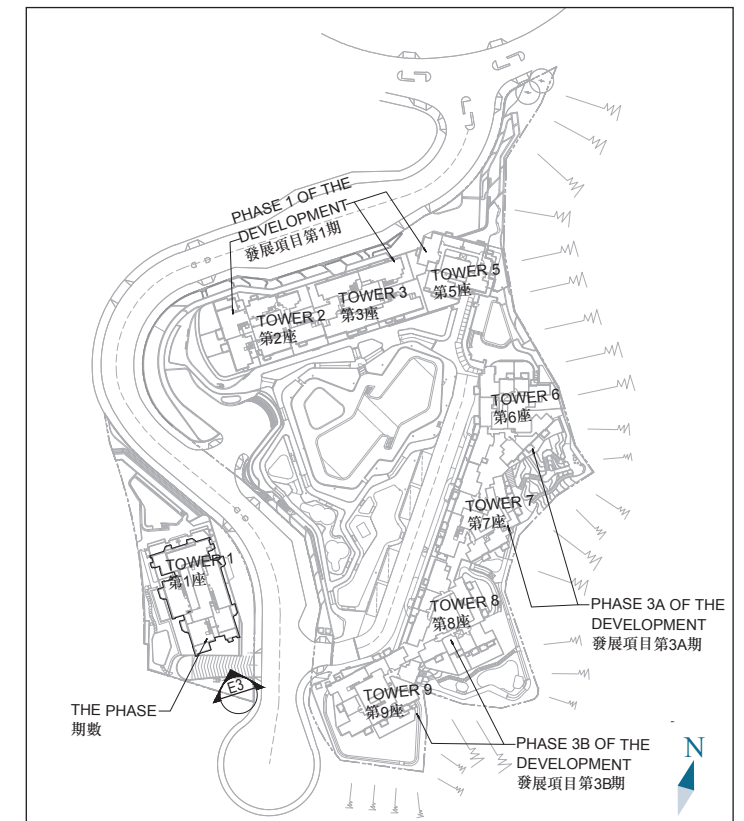
大致上與期數的外觀一致。

B.L.  
發展項目界線

Elevation 3  
立面圖 3



Key Plan  
索引圖



## Legend 圖例：

B.L. Boundary of the Development  
發展項目的界線

Authorized Person for the Phase has certified that the elevations shown on these plans:

期數的認可人士證明本圖所顯示的立面：

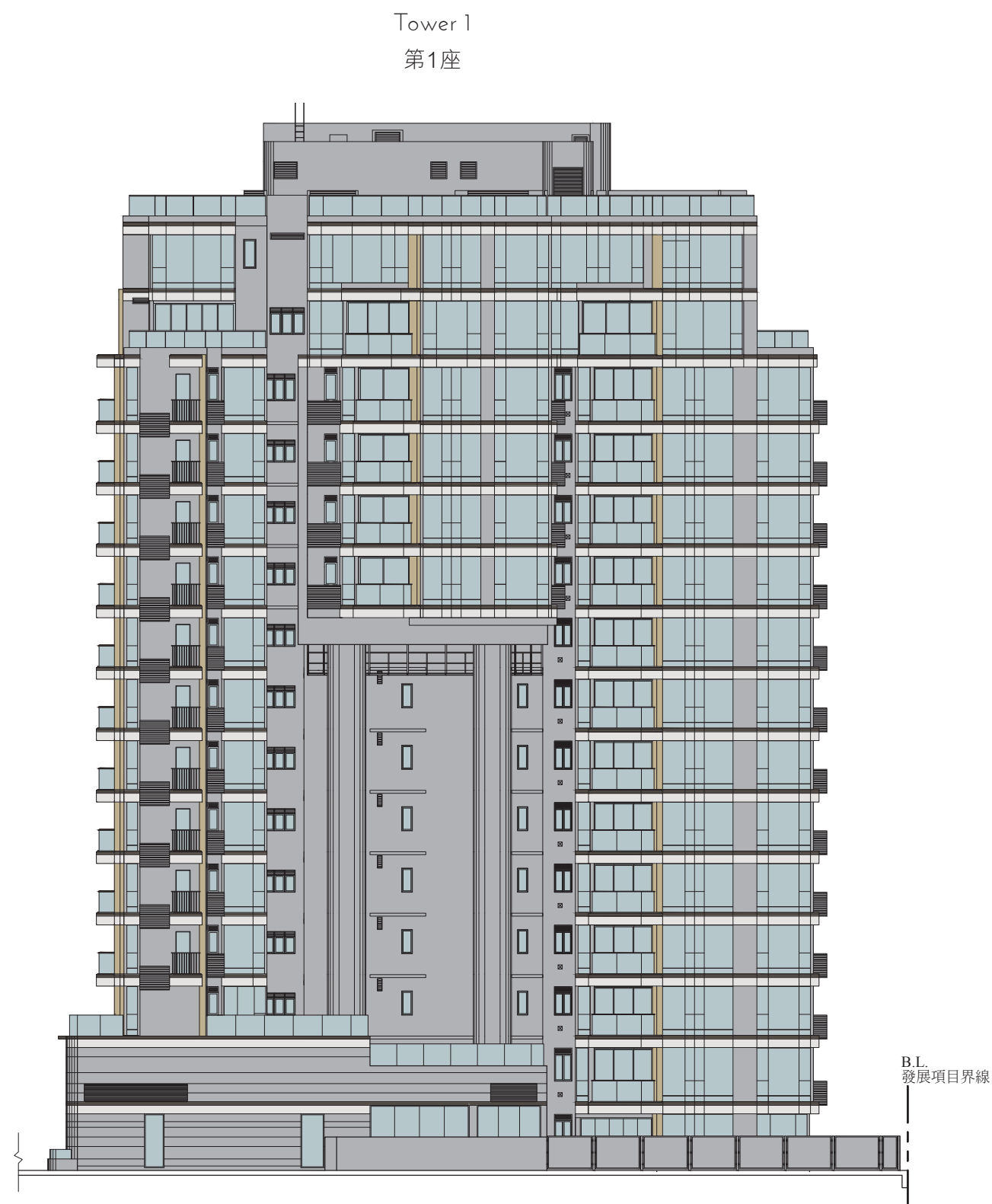
- (1) are prepared on the basis of the approved building plans for the Phase as of 4 August 2021 and the approved phasing plans for the Phase as of 20 July 2021; and

以2021年8月4日的情況為準的期數的經批准的建築圖則及以2021年7月20日的情況為準的期數的經批准的期數圖則為基礎擬備；及

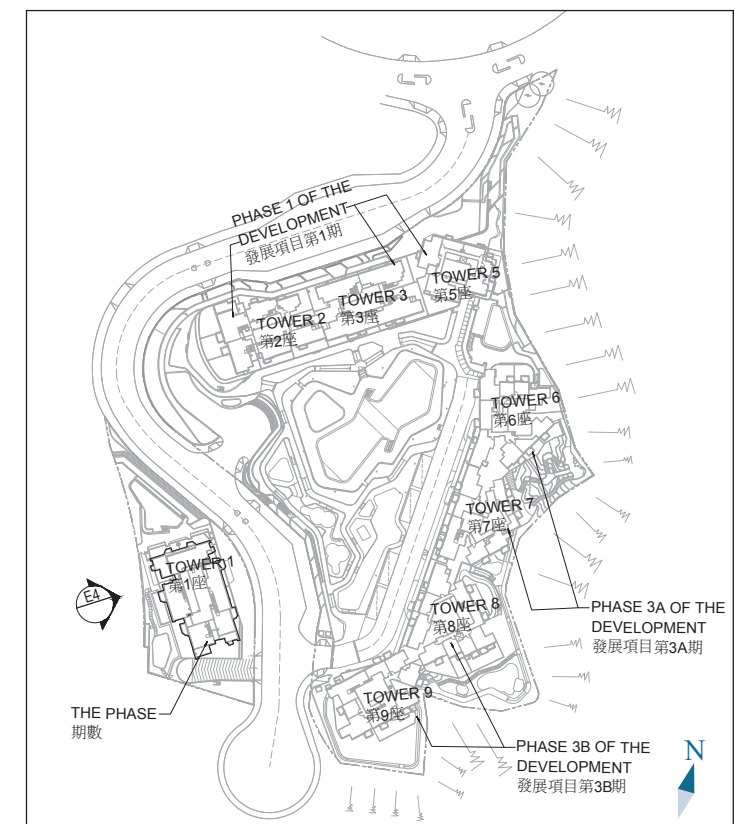
- (2) are in general accordance with the outward appearance of the Phase.

大致上與期數的外觀一致。

Elevation 4  
立面圖 4



Key Plan  
索引圖



### Legend 圖例：

B.L. Boundary of the Development  
發展項目的界線

Authorized Person for the Phase has certified that the elevations shown on these plans:

期數的認可人士證明本圖所顯示的立面：

- (1) are prepared on the basis of the approved building plans for the Phase as of 4 August 2021 and the approved phasing plans for the Phase as of 20 July 2021; and

以2021年8月4日的情況為準的期數的經批准的建築圖則及以2021年7月20日的情況為準的期數的經批准的期數圖則為基礎擬備；及

- (2) are in general accordance with the outward appearance of the Phase.

大致上與期數的外觀一致。