

11

FLOOR PLANS OF RESIDENTIAL PROPERTIES IN THE PHASE

期數的住宅物業的樓面平面圖

NOTATION 圖例

A/C OUTDOOR UNIT PLATFORM = AIR CONDITIONER OUTDOOR UNIT PLATFORM = 空調機室外機平台
A/C OUTDOOR UNIT PLINTH = AIR CONDITIONER OUTDOOR UNIT PLINTH = 空調機室外機底座
A.F. = ARCHITECTURAL FEATURE = 建築裝飾
A.F. FOR R.W.P. = ARCHITECTURAL FEATURE FOR RAIN WATER PIPE = 雨水管道槽之建築裝飾
BAL. = BALCONY = 露台
BATH = BATHROOM = 浴室
B.R. = BEDROOM = 睡房
DIN. = DINING ROOM = 飯廳
E.A.D. = EXHAUST AIR DUCT = 排風管
E.D. = ELECTRICAL DUCT = 電線槽
E.L.V. = EXTRA LOW VOLTAGE ELECTRICAL = 特低壓電錶櫃
E.M.R. = ELECTRICAL METER ROOM = 電錶房
H.R. = HOSE REEL = 消防喉轆
KIT. = KITCHEN = 廚房

LIV. = LIVING ROOM = 客廳
M.BATH = MASTER BATHROOM = 主人浴室
M.B.R. = MASTER BEDROOM = 主人睡房
OPEN KIT. = OPEN KITCHEN = 開放式廚房
P.D. = PIPE DUCT = 管道
R.S.M.R.M. = REFUSE STORAGE AND MATERIAL RECOVERY ROOM = 垃圾及物料回收室
R.W.P. = RWP = RAIN WATER PIPE = 雨水管
STORE = STORE ROOM = 儲物房
STORE (U.S.) = STORE (UNDER STAIRCASE) = 樓梯底下儲物房
STUDY = STUDY ROOM = 書房
T.R.S. = TEMPORARY REFUGE SPACE = 臨時庇護處
U.P. = UTILITY PLATFORM = 工作平台
UTIL. = UTILITY ROOM = 工作間
W.M.C. = WATER METER CABINET = 水錶櫃

Notes applicable to the floor plans of this section:

1. There are architectural features, metal grilles and/ or exposed pipes on the external walls of some of the floors. For details, please refer to the latest approved building plans.
2. Common pipes exposed and/ or enclosed in cladding are located at/ adjacent to the balcony, utility platform and/or roof and/or flat roof and/ or air-conditioning platform and/ or external wall of some residential units. For details, please refer to the latest approved building plans and/ or approved drainage plans.
3. There are sunken slabs (for mechanical & electrical services of units above) and/ or ceiling bulkheads for the airconditioning fittings and/ or mechanical & electrical services at some residential units.
4. Balconies and utility platforms are non-enclosed areas.
5. The indications of fittings such as sinks, hobs, toilet bowls, wash basins, bathtubs etc. shown on the floor plans are indications of their approximate locations only and not indications of their actual size, designs and shapes.
6. There are exposed pipes mounted at part of flat roof and roof of each Tower in the Phase. Only part of the exposed pipes are covered by aluminium cladding.
7. For some residential units, the air-conditioner platform(s) outside the residential unit will be placed with outdoor air-conditioner unit(s) belonging to its unit and / or other units. The placement of these air-conditioner unit(s) may have heat and/ or sounds.

適用於本章節所有平面圖的備註：

1. 部份樓層外牆設有建築裝飾金屬格柵及/或外露喉管。詳情請參閱售樓說明書。
2. 部份單位的露台及/或工作平台及/或天台及/或平台及/或冷氣機平台及/或外牆或其鄰近地方設有外露及/或內藏於飾板的公用喉管。詳細資料請參考最新批准的建築圖則及/或排水設施圖。
3. 部分住宅單位天花有跌級樓板（用以安裝樓上單位之機電設備）及/或假天花內裝置空調裝備及/或其他機電設備。
4. 露台及工作平台為不可封閉的地方。
5. 樓面平面圖所示之裝置如洗滌盤、煮食爐、坐廁、面盆、浴缸等只供展示其大約位置而非展示其實際大小、設計及形狀。
6. 期數內的每座大樓的部份平台及天台上裝設有外露喉管，只有部份外露喉管被鋁質飾板所覆蓋。
7. 部份住宅單位外的冷氣機平台將會放置其單位及/或其他單位的一部或多部冷氣戶外機。該等冷氣機的位置可能發出熱力及/或聲音。

11

第1座

1樓 樓面

Scale:

比例：OM/米

5M/米



11

FLOOR PLANS OF RESIDENTIAL PROPERTIES IN THE PHASE
期數的住宅物業的樓面平面圖

	Tower 座數	Floor 樓層	Units 單位			
			A	B	C	D
The thickness of the floor slabs (excluding plaster) of each residential property (mm) 每個住宅物業的樓板（不包括灰泥）的厚度（毫米）	Tower 1 第1座	1/F 1樓	150	150, 250	150	150
The floor-to-floor height (i.e. the height between the top surface of the structural slab of a floor and the top surface of the structural slab of its immediate upper floor) of each residential property (mm) 每個住宅物業的層與層之間的高度（指該樓層之石屎地台面與上一層石屎地台面之高度距離）（毫米）			3450, 3550 ^{###} , 3600 ^{###} , 3650 ^{###}	3100, 3450, 3600 ^{###} , 3950 ^{###}	3450, 3600 ^{###} , 3650 ^{###}	3450, 3600 ^{###} , 3650 ^{###}

The internal areas of the residential properties on the upper floors will generally be slightly larger than those on the lower floors because of the reducing thickness of the structural walls on the upper floors.
(Note: Not Applicable)

Notes :

1. The dimensions in the floor plans are all structural dimensions in millimetre.
- ^{###} Inclusive of the sunken depth of the sunken slab on the floor of this floor (500mm)

因住宅物業的較高樓層的結構牆的厚度遞減，較高樓層的內部面積，一般比較低樓層的內部面積稍大。（註：不適用）

備註：

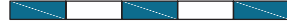
1. 樓面平面圖所列之尺寸為以毫米標示之建築結構尺寸。
- ^{###} 包括本層地台跌級樓板之跌級深度 (500毫米)

11 FLOOR PLANS OF RESIDENTIAL PROPERTIES IN THE PHASE

期數的住宅物業的樓面平面圖

TOWER 1 2/F FLOOR PLAN

第1座 2樓 樓面平面圖

Scale:  5M/米
比例：0M/米 5M/米



TWO AIR-CONDITIONING OUTDOOR UNITS WILL BE INSTALLED WITH A DOUBLE DECK SYSTEM
兩部空調機室外機將會以雙層系統形式安裝

11 FLOOR PLANS OF RESIDENTIAL PROPERTIES IN THE PHASE

期數的住宅物業的樓面平面圖

	Tower 座數	Floor 樓層	Units 單位			
			A	B	C	D
The thickness of the floor slabs (excluding plaster) of each residential property (mm) 每個住宅物業的樓板（不包括灰泥）的厚度（毫米）	Tower 1 第1座	2/F 2樓	150	150, 250	150	150, 200, 300
The floor-to-floor height (i.e. the height between the top surface of the structural slab of a floor and the top surface of the structural slab of its immediate upper floor) of each residential property (mm) 每個住宅物業的層與層之間的高度（指該樓層之石屎地台面與上一層石屎地台面之高度距離）（毫米）			3450, 3450 [#] , 3450 ^{**} , 3450 ^{^^}	3100, 3150, 3450, 3450 ^{**} , 3500 ^{**} , 3800 ^{**}	3450, 3450 [#] , 3450 ^{**}	3450, 3450 [#] , 3450 ^{**}

The internal areas of the residential properties on the upper floors will generally be slightly larger than those on the lower floors because of the reducing thickness of the structural walls on the upper floors.
(Note: Not Applicable)

Notes :

1. The dimensions in the floor plans are all structural dimensions in millimetre.
- # Inclusive of the sunken depth of the sunken slab on the floor of this floor (300mm)
- ** Inclusive of the sunken depth of the sunken slab on the floor of this floor (350mm)
- ^^ Inclusive of the sunken depth of the sunken slab on the floor of this floor (400mm)

因住宅物業的較高樓層的結構牆的厚度遞減，較高樓層的內部面積，一般比較低樓層的內部面積稍大。（註：不適用）

備註：

1. 樓面平面圖所列之尺寸為以毫米標示之建築結構尺寸。
- # 包括本層地台跌級樓板之跌級深度 (300毫米)
- ** 包括本層地台跌級樓板之跌級深度 (350毫米)
- ^^ 包括本層地台跌級樓板之跌級深度 (400毫米)

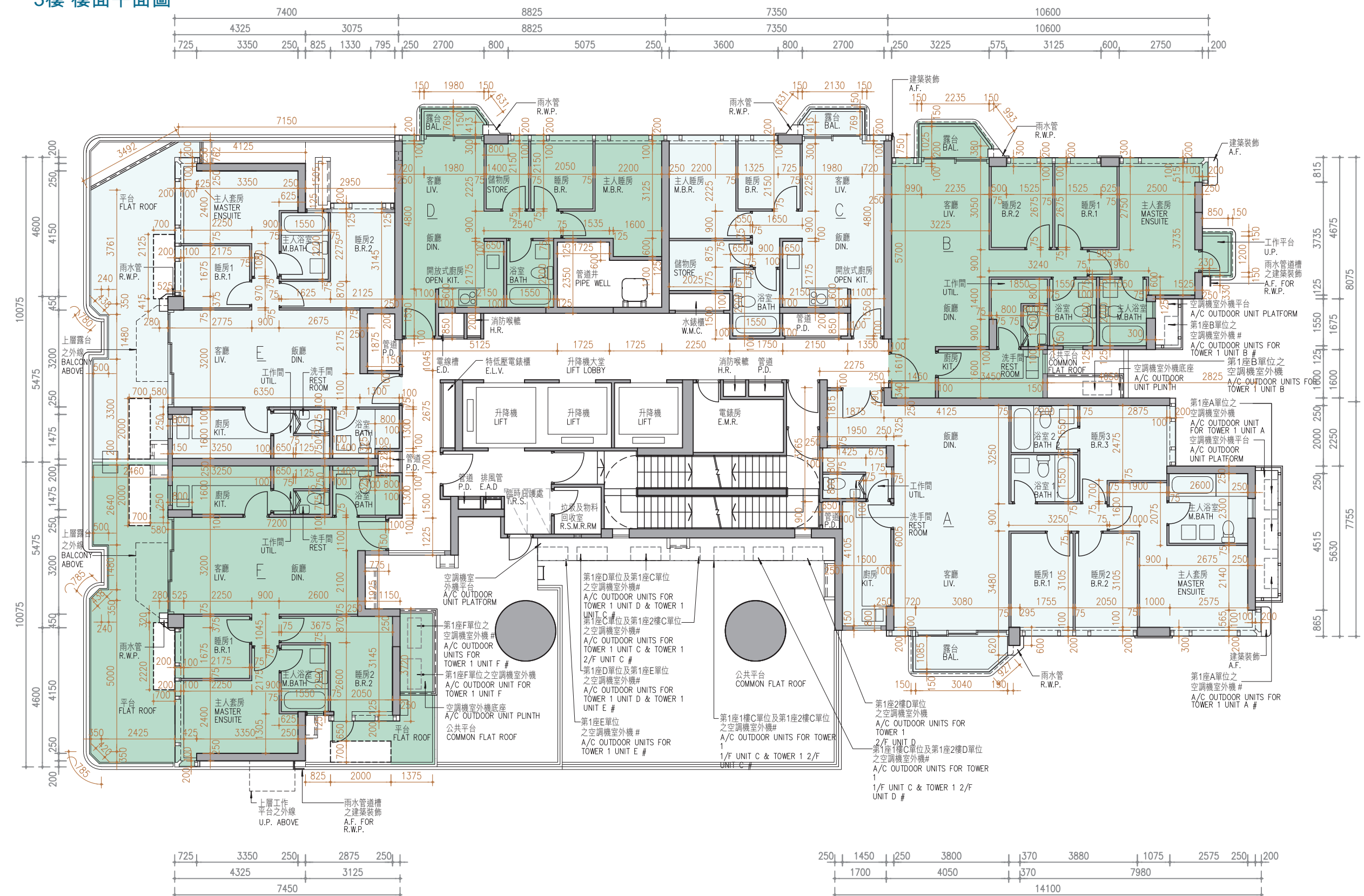
11 FLOOR PLANS OF RESIDENTIAL PROPERTIES IN THE PHASE

期數的住宅物業的樓面平面圖

TOWER 1 3/F FLOOR PLAN

第1座 3樓 樓面平面圖

Scale: 比例：OM/米 5M/米



11

FLOOR PLANS OF RESIDENTIAL PROPERTIES IN THE PHASE
期數的住宅物業的樓面平面圖

	Tower 座數	Floor 樓層	Units 單位					
			A	B	C	D	E	F
The thickness of the floor slabs (excluding plaster) of each residential property (mm) 每個住宅物業的樓板（不包括灰泥）的厚度（毫米）	Tower 1 第1座	3/F 3樓	150	150	150	150	150	150
The floor-to-floor height (i.e. the height between the top surface of the structural slab of a floor and the top surface of the structural slab of its immediate upper floor) of each residential property (mm) 每個住宅物業的層與層之間的高度（指該樓層之石屎地台面與上一層石屎地台面之高度距離）（毫米）			3200, 3200 [#] , 3200 ^{**} , 3250 ^{^^} , 3550 ^{**} , 3600 ^{^^}	2850, 3200, 3200 [#] , 3200 ^{**} , 3500 [#] , 3550 ^{**}	2900, 3200, 3200 [#] , 3200 ^{**}	3200, 3200 [#] , 3200 ^{**}	3200, 3200 [#] , 3200 ^{**}	2850, 3200, 3200 [#] , 3200 ^{**} , 3550 ^{**}

The internal areas of the residential properties on the upper floors will generally be slightly larger than those on the lower floors because of the reducing thickness of the structural walls on the upper floors.
(Note: Not Applicable)

Notes :

1. The dimensions in the floor plans are all structural dimensions in millimetre.
- # Inclusive of the sunken depth of the sunken slab on the floor of this floor (300mm)
- ** Inclusive of the sunken depth of the sunken slab on the floor of this floor (350mm)
- ^^ Inclusive of the sunken depth of the sunken slab on the floor of this floor (400mm)

因住宅物業的較高樓層的結構牆的厚度遞減，較高樓層的內部面積，一般比較低樓層的內部面積稍大。（註：不適用）

備註：

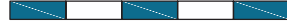
1. 樓面平面圖所列之尺寸為以毫米標示之建築結構尺寸。
- # 包括本層地台跌級樓板之跌級深度 (300毫米)
- ** 包括本層地台跌級樓板之跌級深度 (350毫米)
- ^^ 包括本層地台跌級樓板之跌級深度 (400毫米)

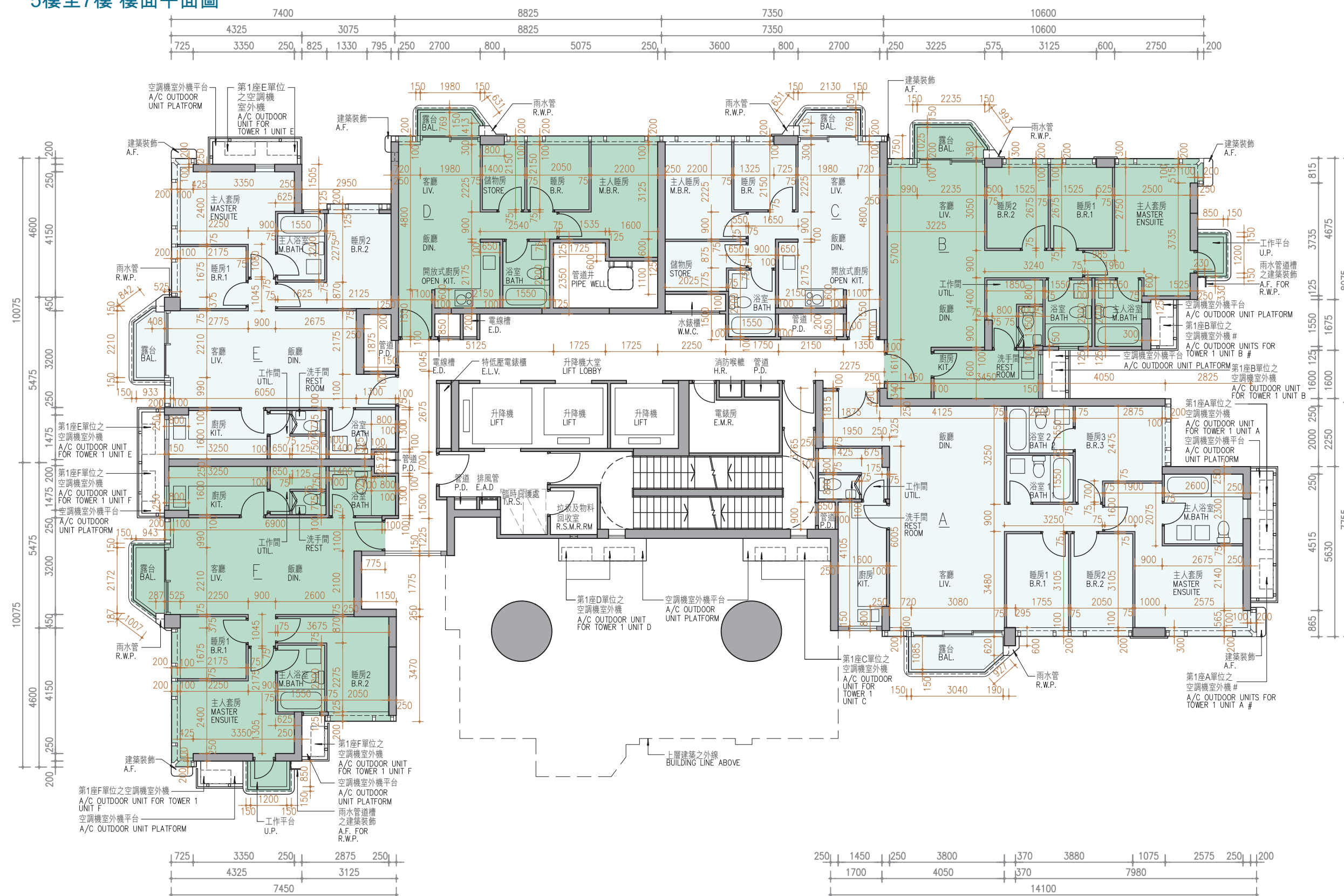
11 FLOOR PLANS OF RESIDENTIAL PROPERTIES IN THE PHASE

期數的住宅物業的樓面平面圖

TOWER 1 5/F-7/F FLOOR PLAN

第1座 5樓至7樓 樓面平面圖

Scale:  5M/米
比例：OM/米



TWO AIR-CONDITIONING OUTDOOR UNITS WILL BE INSTALLED WITH A DOUBLE DECK SYSTEM
兩部空調機室外機將會以雙層系統形式安裝

11

FLOOR PLANS OF RESIDENTIAL PROPERTIES IN THE PHASE
期數的住宅物業的樓面平面圖

	Tower 座數	Floor 樓層	Units 單位					
			A	B	C	D	E	F
The thickness of the floor slabs (excluding plaster) of each residential property (mm) 每個住宅物業的樓板（不包括灰泥）的厚度（毫米）	Tower 1 第1座	5/F-7/F 5樓至7樓	150	150	150	150	150	150
The floor-to-floor height (i.e. the height between the top surface of the structural slab of a floor and the top surface of the structural slab of its immediate upper floor) of each residential property (mm) 每個住宅物業的層與層之間的高度（指該樓層之石屎地台面與上一層石屎地台面之高度距離）（毫米）			3200, 3200 [#] , 3200 ^{**}	3200, 3200 [#] , 3200 ^{**}	3200, 3200 [#] , 3200 ^{**}	3200, 3200 [#] , 3200 ^{**}	3200, 3200 [#] , 3200 ^{**}	3200, 3200 [#] , 3200 ^{**}

The internal areas of the residential properties on the upper floors will generally be slightly larger than those on the lower floors because of the reducing thickness of the structural walls on the upper floors.
(Note: Not Applicable)

Notes :

1. The dimensions in the floor plans are all structural dimensions in millimetre.
- # Inclusive of the sunken depth of the sunken slab on the floor of this floor (300mm)
- ** Inclusive of the sunken depth of the sunken slab on the floor of this floor (350mm)

因住宅物業的較高樓層的結構牆的厚度遞減，較高樓層的內部面積，一般比較低樓層的內部面積稍大。（註：不適用）

備註：

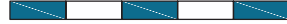
1. 樓面平面圖所列之尺寸為以毫米標示之建築結構尺寸。
- # 包括本層地台跌級樓板之跌級深度 (300毫米)
- ** 包括本層地台跌級樓板之跌級深度 (350毫米)

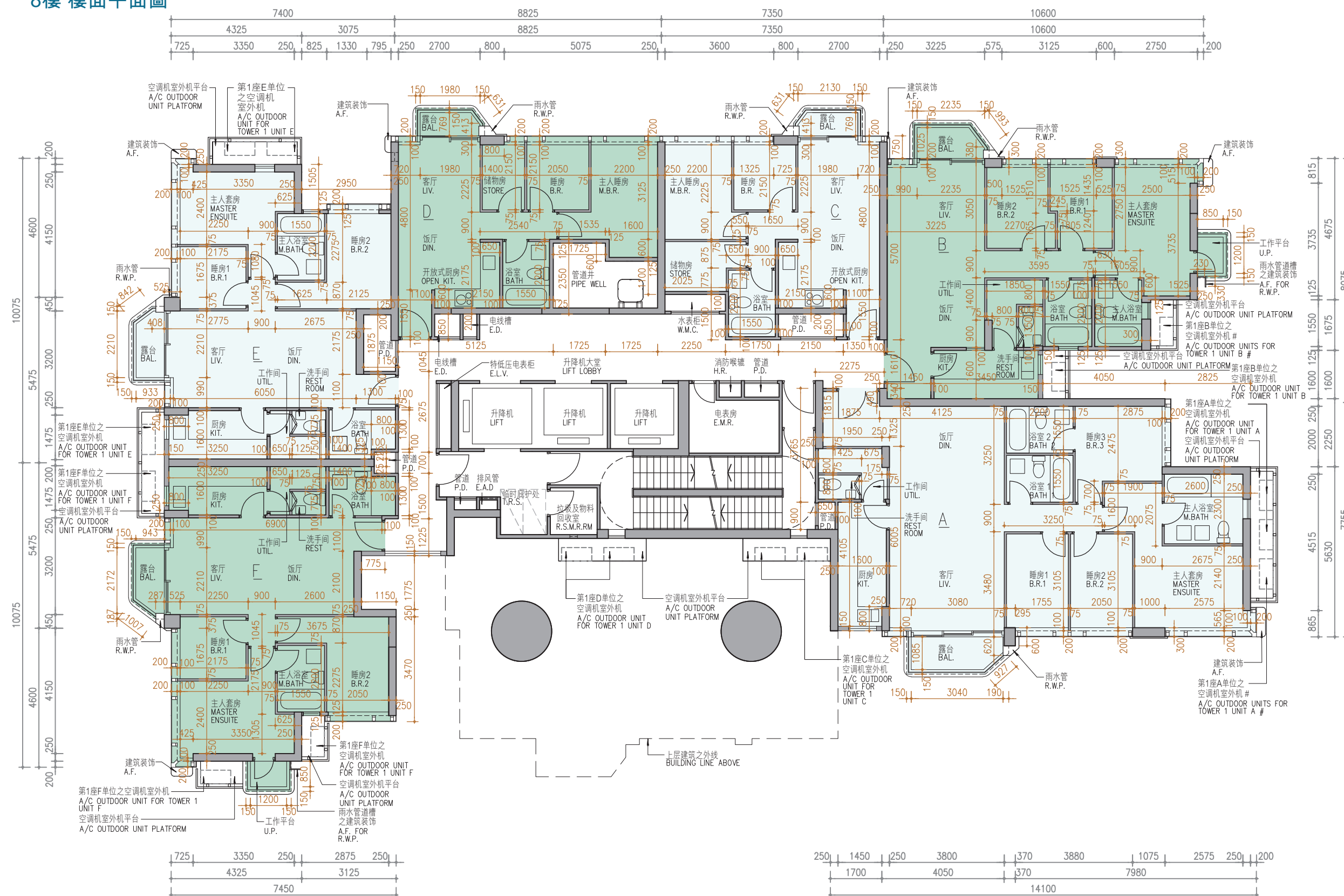
11 FLOOR PLANS OF RESIDENTIAL PROPERTIES IN THE PHASE

期數的住宅物業的樓面平面圖

TOWER 1 8/F FLOOR PLAN

第1座 8樓 樓面平面圖

Scale:  5M/米
比例：OM/米



TWO AIR-CONDITIONING OUTDOOR UNITS WILL BE INSTALLED WITH A DOUBLE DECK SYSTEM
兩部空調機室外機將會以雙層系統形式安裝

11

FLOOR PLANS OF RESIDENTIAL PROPERTIES IN THE PHASE
期數的住宅物業的樓面平面圖

	Tower 座數	Floor 樓層	Units 單位					
			A	B	C	D	E	F
The thickness of the floor slabs (excluding plaster) of each residential property (mm) 每個住宅物業的樓板（不包括灰泥）的厚度（毫米）	Tower 1 第1座	8/F 8樓	150	150	150	150	150	150
The floor-to-floor height (i.e. the height between the top surface of the structural slab of a floor and the top surface of the structural slab of its immediate upper floor) of each residential property (mm) 每個住宅物業的層與層之間的高度（指該樓層之石屎地台面與上一層石屎地台面之高度距離）（毫米）			3200, 3200 [#] , 3200 ^{**}	3200, 3200 [#] , 3200 ^{**}	3200, 3200 [#] , 3200 ^{**}	3200, 3200 [#] , 3200 ^{**}	3200, 3200 [#] , 3200 ^{**}	3200, 3200 [#] , 3200 ^{**}

The internal areas of the residential properties on the upper floors will generally be slightly larger than those on the lower floors because of the reducing thickness of the structural walls on the upper floors.
(Note: Not Applicable)

Notes :

1. The dimensions in the floor plans are all structural dimensions in millimetre.
- # Inclusive of the sunken depth of the sunken slab on the floor of this floor (300mm)
- ** Inclusive of the sunken depth of the sunken slab on the floor of this floor (350mm)

因住宅物業的較高樓層的結構牆的厚度遞減，較高樓層的內部面積，一般比較低樓層的內部面積稍大。（註：不適用）

備註：

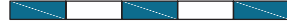
1. 樓面平面圖所列之尺寸為以毫米標示之建築結構尺寸。
- # 包括本層地台跌級樓板之跌級深度 (300毫米)
- ** 包括本層地台跌級樓板之跌級深度 (350毫米)

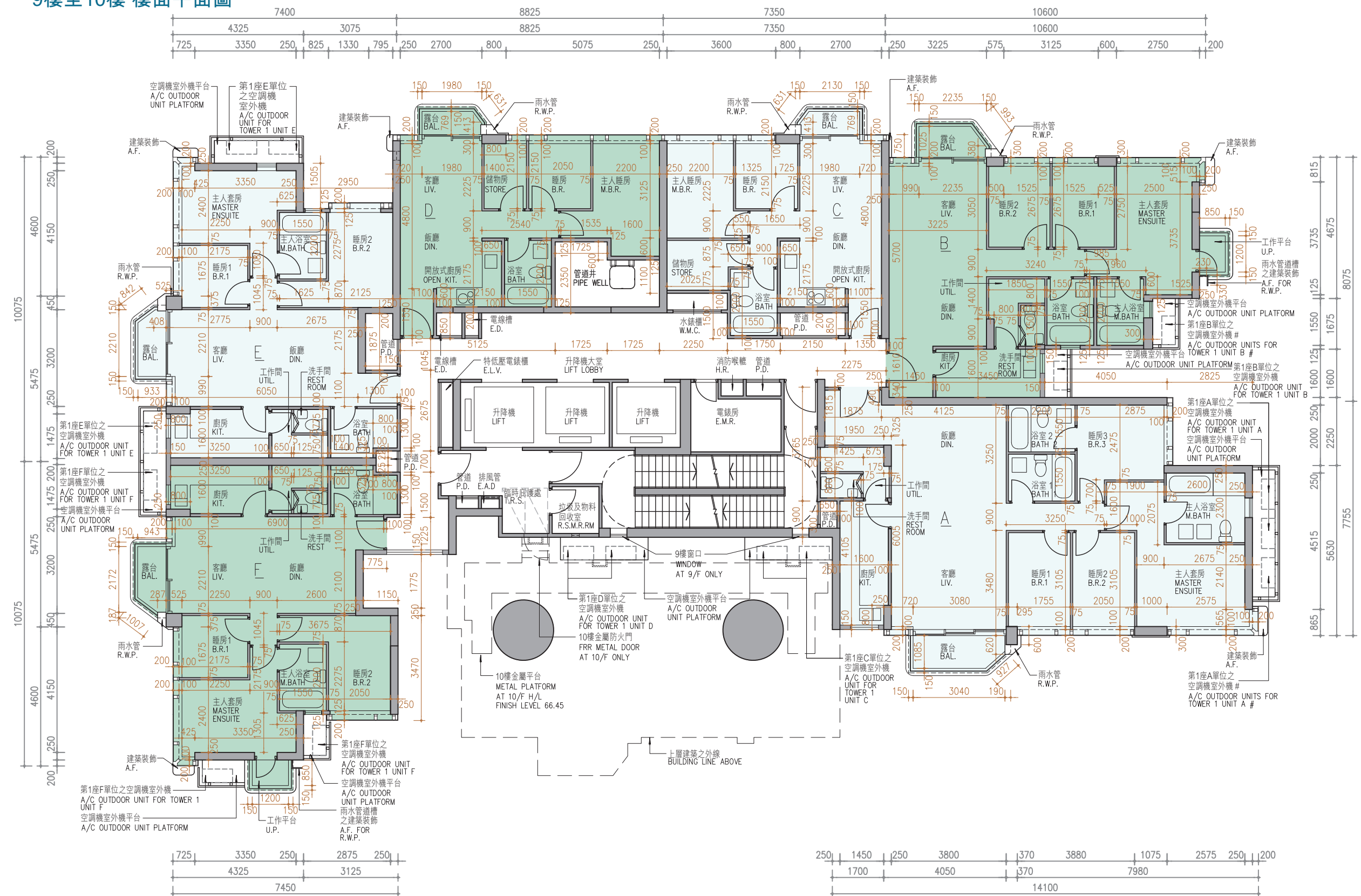
11 FLOOR PLANS OF RESIDENTIAL PROPERTIES IN THE PHASE

期數的住宅物業的樓面平面圖

TOWER 1 9/F-10/F FLOOR PLAN

第1座 9樓至10樓 樓面平面圖

Scale:  5M/米
比例：OM/米



TWO AIR-CONDITIONING OUTDOOR UNITS WILL BE INSTALLED WITH A DOUBLE DECK SYSTEM
兩部空調機室外機將會以雙層系統形式安裝

11

FLOOR PLANS OF RESIDENTIAL PROPERTIES IN THE PHASE

期數的住宅物業的樓面平面圖

	Tower 座數	Floor 樓層	Units 單位					
			A	B	C	D	E	F
The thickness of the floor slabs (excluding plaster) of each residential property (mm) 每個住宅物業的樓板（不包括灰泥）的厚度（毫米）	Tower 1 第1座	9/F-10/F 9樓至10樓	150	150	150	150	150	150
The floor-to-floor height (i.e. the height between the top surface of the structural slab of a floor and the top surface of the structural slab of its immediate upper floor) of each residential property (mm) 每個住宅物業的層與層之間的高度（指該樓層之石屎地台面與上一層石屎地台面之高度距離）（毫米）			3200, 3200 [#] , 3200 ^{**}	3200, 3200 [#] , 3200 ^{**}	3200, 3200 [#] , 3200 ^{**}	3200, 3200 [#] , 3200 ^{**}	3200, 3200 [#] , 3200 ^{**}	3200, 3200 [#] , 3200 ^{**}

The internal areas of the residential properties on the upper floors will generally be slightly larger than those on the lower floors because of the reducing thickness of the structural walls on the upper floors.
(Note: Not Applicable)

Notes :

1. The dimensions in the floor plans are all structural dimensions in millimetre.
- # Inclusive of the sunken depth of the sunken slab on the floor of this floor (300mm)
- ** Inclusive of the sunken depth of the sunken slab on the floor of this floor (350mm)

因住宅物業的較高樓層的結構牆的厚度遞減，較高樓層的內部面積，一般比較低樓層的內部面積稍大。（註：不適用）

備註：

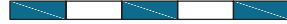
1. 樓面平面圖所列之尺寸為以毫米標示之建築結構尺寸。
- # 包括本層地台跌級樓板之跌級深度 (300毫米)
- ** 包括本層地台跌級樓板之跌級深度 (350毫米)

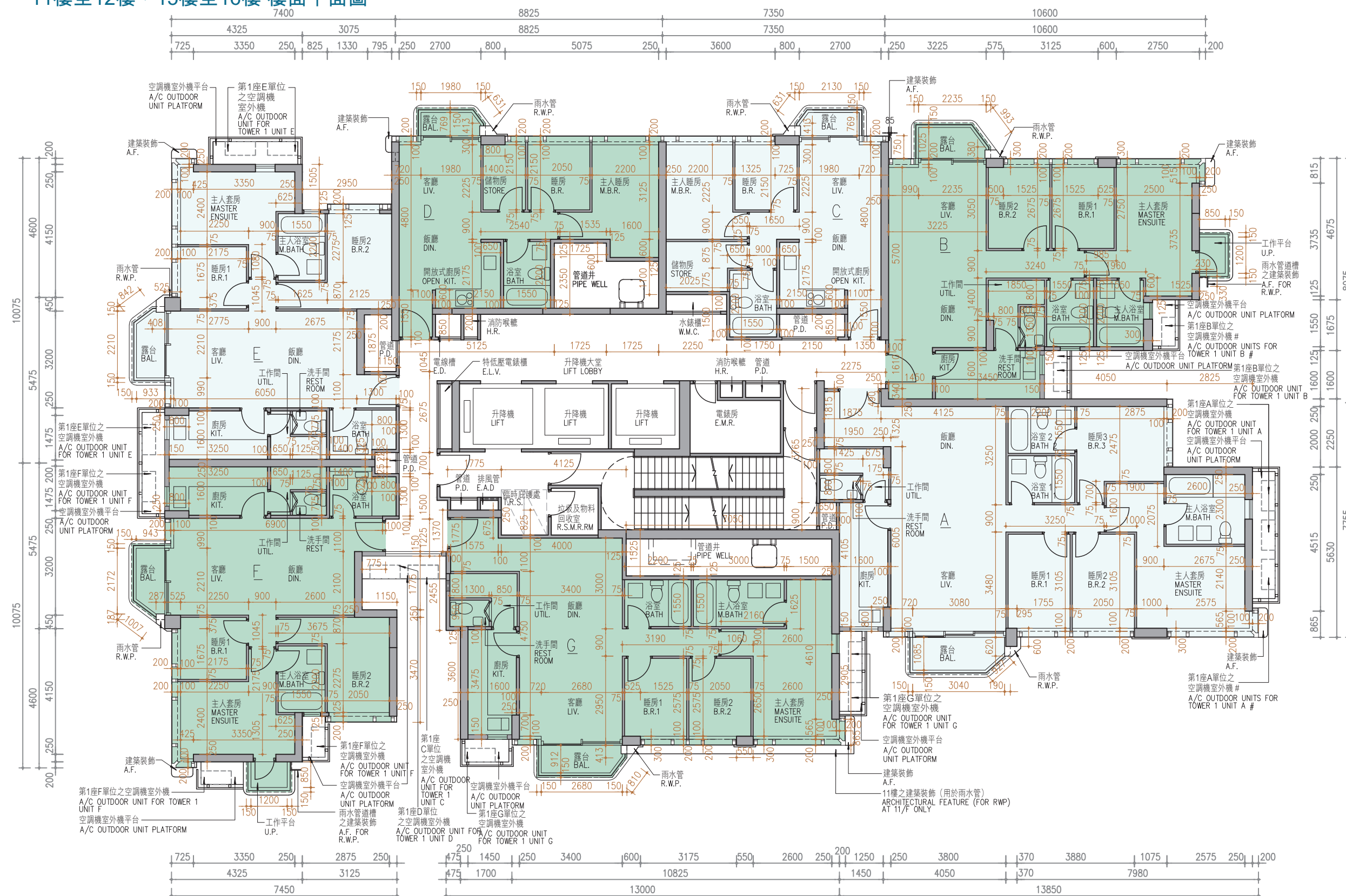
11 FLOOR PLANS OF RESIDENTIAL PROPERTIES IN THE PHASE

期數的住宅物業的樓面平面圖

TOWER 1 11/F-12/F, 15/F-16/F FLOOR PLAN

第1座 11樓至12樓，15樓至16樓 樓面平面圖

Scale:  5M/米
比例：OM/米 5M/米



TWO AIR-CONDITIONING OUTDOOR UNITS WILL BE INSTALLED WITH A DOUBLE DECK SYSTEM
兩部空調機室外機將會以雙層系統形式安裝

11 FLOOR PLANS OF RESIDENTIAL PROPERTIES IN THE PHASE

期數的住宅物業的樓面平面圖

	Tower 座數	Floor 樓層	Units 單位						
			A	B	C	D	E	F	G
The thickness of the floor slabs (excluding plaster) of each residential property (mm) 每個住宅物業的樓板（不包括灰泥）的厚度（毫米）	Tower 1 第1座	11/F 11樓	150	150	150	150	150	150	150, 400
The floor-to-floor height (i.e. the height between the top surface of the structural slab of a floor and the top surface of the structural slab of its immediate upper floor) of each residential property (mm) 每個住宅物業的層與層之間的高度（指該樓層之石屎地台面與上一層石屎地台面之高度距離）（毫米）			3200, 3200 [#] , 3200 ^{**}	3200, 3200 [#] , 3200 ^{**}	3200, 3200 [#] , 3200 ^{**}	3200, 3200 [#] , 3200 ^{**}	3200, 3200 [#] , 3200 ^{**}	3200, 3200 [#] , 3200 ^{**}	3200, 3350 ^{###} , 3400 ^{###}
The thickness of the floor slabs (excluding plaster) of each residential property (mm) 每個住宅物業的樓板（不包括灰泥）的厚度（毫米）		12/F & 15/F 12樓及15樓	150	150	150	150	150	150	150, 400
The floor-to-floor height (i.e. the height between the top surface of the structural slab of a floor and the top surface of the structural slab of its immediate upper floor) of each residential property (mm) 每個住宅物業的層與層之間的高度（指該樓層之石屎地台面與上一層石屎地台面之高度距離）（毫米）			3200, 3200 [#] , 3200 ^{**}	3200, 3200 [#] , 3200 ^{**}	3200, 3200 [#] , 3200 ^{**}	3200, 3200 [#] , 3200 ^{**}	3200, 3200 [#] , 3200 ^{**}	3200, 3200 [#] , 3200 ^{**}	3200, 3200 [#] , 3200 ^{**}
The thickness of the floor slabs (excluding plaster) of each residential property (mm) 每個住宅物業的樓板（不包括灰泥）的厚度（毫米）		16/F 16樓	150	150	150	150	150	150	150
The floor-to-floor height (i.e. the height between the top surface of the structural slab of a floor and the top surface of the structural slab of its immediate upper floor) of each residential property (mm) 每個住宅物業的層與層之間的高度（指該樓層之石屎地台面與上一層石屎地台面之高度距離）（毫米）			3100, 3150, 3450, 3450 ^{**} , 3500 ^{**} , 3750 [#] , 3800 ^{**}	3100, 3150, 3450, 3450 [#] , 3450 ^{**} , 3750 [#] , 3800 ^{**}	2950, 3100, 3150, 3300 ^{**} , 3400 [#] , 3450, 3750 [#] , 3800 ^{**}	3450, 3750 [#] , 3800 ^{**}	2950, 3100, 3150, 3300 ^{**} , 3450, 3450 [#] , 3750 [#] , 3800 ^{**}	3150, 3450, 3450 [#] , 3500 ^{**} , 3750 [#] , 3800 ^{**}	3100, 3150, 3450, 3750 [#] , 3800 ^{**}

The internal areas of the residential properties on the upper floors will generally be slightly larger than those on the lower floors because of the reducing thickness of the structural walls on the upper floors. (Note: Not Applicable)

Notes :

1. The dimensions in the floor plans are all structural dimensions in millimetre.
- # Inclusive of the sunken depth of the sunken slab on the floor of this floor (300mm)
- ** Inclusive of the sunken depth of the sunken slab on the floor of this floor (350mm)
- ### Inclusive of the sunken depth of the sunken slab on the floor of this floor (500mm)

因住宅物業的較高樓層的結構牆的厚度遞減，較高樓層的內部面積，一般比較低樓層的內部面積稍大。（註：不適用）

備註：

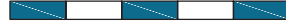
1. 樓面平面圖所列之尺寸為以毫米標示之建築結構尺寸。
- # 包括本層地台跌級樓板之跌級深度 (300毫米)
- ** 包括本層地台跌級樓板之跌級深度 (350毫米)
- ### 包括本層地台跌級樓板之跌級深度 (500毫米)

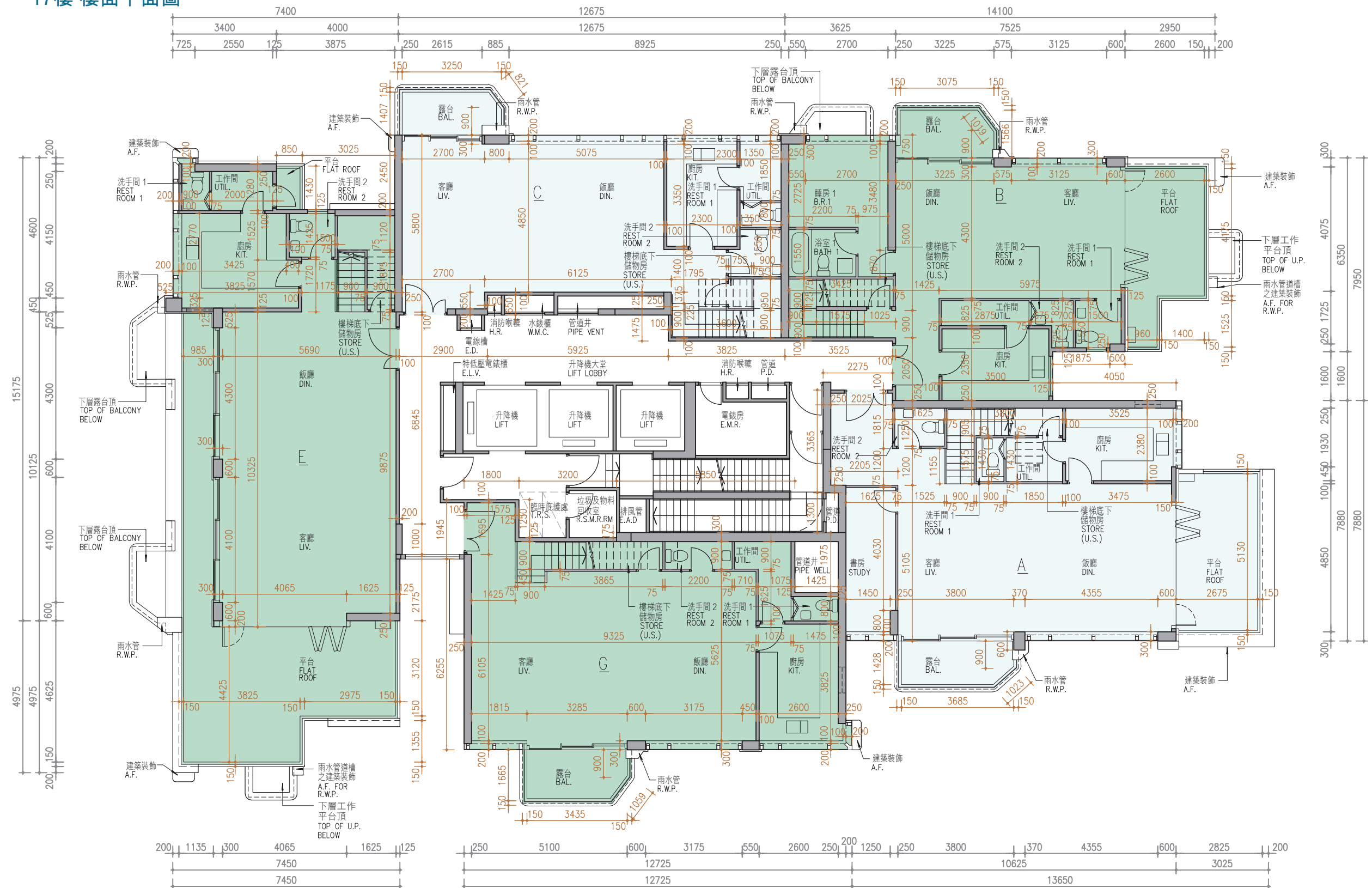
11 FLOOR PLANS OF RESIDENTIAL PROPERTIES IN THE PHASE

期數的住宅物業的樓面平面圖

TOWER 1 17/F FLOOR PLAN

第1座 17樓 樓面平面圖

Scale:  5M/米
比例：OM/米



TWO AIR-CONDITIONING OUTDOOR UNITS WILL BE INSTALLED WITH A DOUBLE DECK SYSTEM

兩部空調機室外機將會以雙層系統形式安裝

11

FLOOR PLANS OF RESIDENTIAL PROPERTIES IN THE PHASE

期數的住宅物業的樓面平面圖

	Tower 座數	Floor 樓層	Units 單位				
			A	B	C	E	G
The thickness of the floor slabs (excluding plaster) of each residential property (mm) 每個住宅物業的樓板（不包括灰泥）的厚度（毫米）	Tower 1 第1座	17/F 17樓	150, 300	150, 200	150, 300	150, 300	150, 325
The floor-to-floor height (i.e. the height between the top surface of the structural slab of a floor and the top surface of the structural slab of its immediate upper floor) of each residential property (mm) 每個住宅物業的層與層之間的高度（指該樓層之石屎地台面與上一層石屎地台面之高度距離）（毫米）			3150, 3350, 3450, 3450 [#] , 3650 [#] , 3750 [#] , 3800 ^{**}	3150, 3350, 3450, 3500 ^{**} , 3750 [#] , 3800 ^{**}	3450, 3650 ^{###} , 3750 [#] , 3800 ^{**} , 3950 ^{###}	3150, 3350, 3450, 3650 ^{###} , 3800 ^{**} , 3950 ^{###}	3150, 3350, 3450, 3450 ^{**} , 3750 [#] , 3800 ^{**}

The internal areas of the residential properties on the upper floors will generally be slightly larger than those on the lower floors because of the reducing thickness of the structural walls on the upper floors.
(Note: Not Applicable)

Notes :

1. The dimensions in the floor plans are all structural dimensions in millimetre.
- # Inclusive of the sunken depth of the sunken slab on the floor of this floor (300mm)
- ** Inclusive of the sunken depth of the sunken slab on the floor of this floor (350mm)
- ### Inclusive of the sunken depth of the sunken slab on the floor of this floor (500mm)

因住宅物業的較高樓層的結構牆的厚度遞減，較高樓層的內部面積，一般比較低樓層的內部面積稍大。（註：不適用）

備註：

1. 樓面平面圖所列之尺寸為以毫米標示之建築結構尺寸。
- # 包括本層地台跌級樓板之跌級深度 (300毫米)
- ** 包括本層地台跌級樓板之跌級深度 (350毫米)
- ### 包括本層地台跌級樓板之跌級深度 (500毫米)

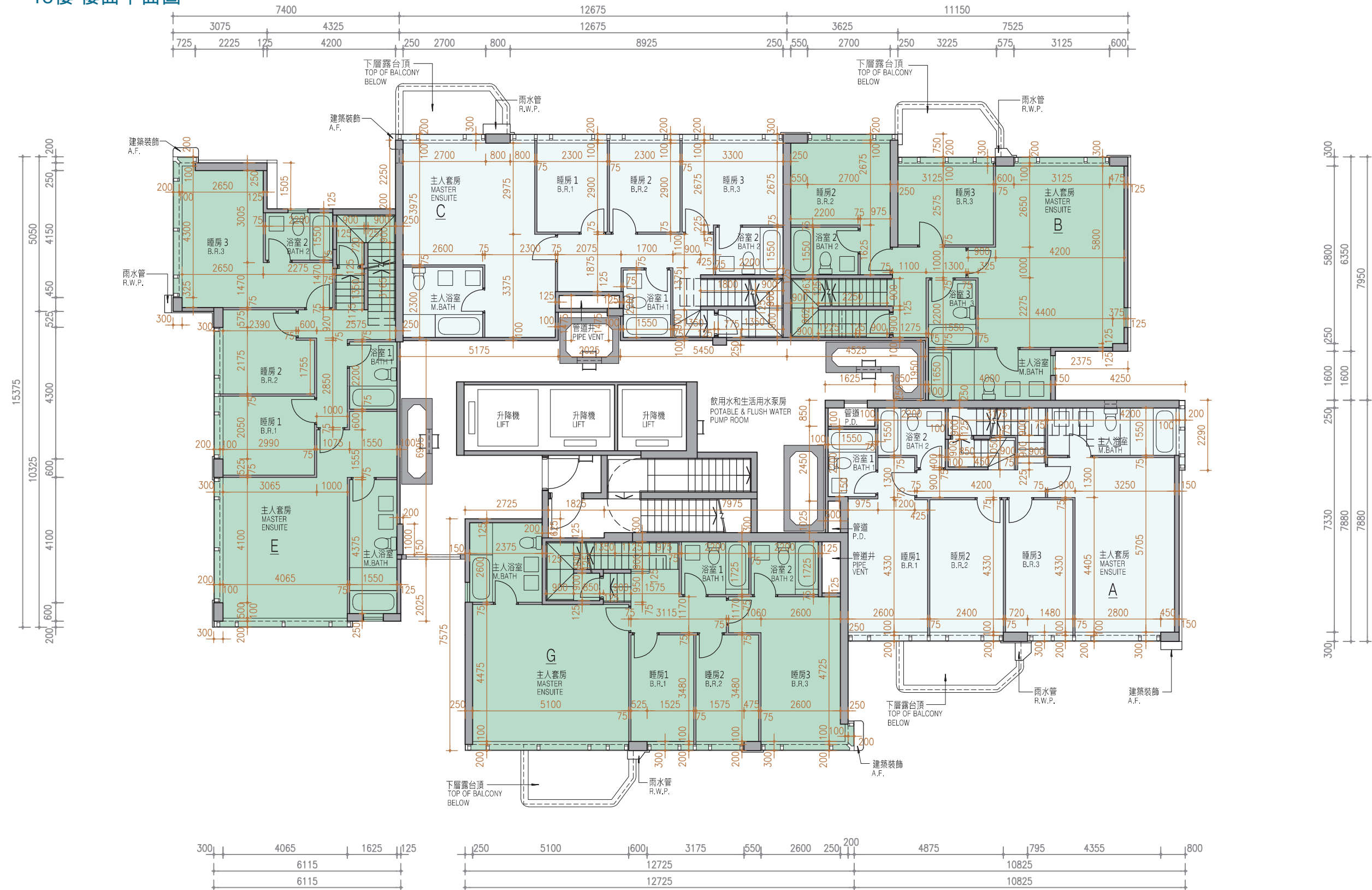
11

第1座

18樓 樓面平面圖

Scale:  

比例：0M/米 5M/米



TWO AIR-CONDITIONING OUTDOOR UNITS WILL BE INSTALLED WITH A DOUBLE DECK SYSTEM

兩部空調機室外機將會以雙層系統形式安裝

11

FLOOR PLANS OF RESIDENTIAL PROPERTIES IN THE PHASE
期數的住宅物業的樓面平面圖

	Tower 座數	Floor 樓層	Units 單位				
			A	B	C	E	G
The thickness of the floor slabs (excluding plaster) of each residential property (mm) 每個住宅物業的樓板（不包括灰泥）的厚度（毫米）	Tower 1 第1座	18/F 18樓	150, 200	150, 200	150, 200	150, 200	150, 200
The floor-to-floor height (i.e. the height between the top surface of the structural slab of a floor and the top surface of the structural slab of its immediate upper floor) of each residential property (mm) 每個住宅物業的層與層之間的高度（指該樓層之石屎地台面與上一層石屎地台面之高度距離）（毫米）			3450, 3550*, 3750 [#]	3450, 3550*, 3750 [#]	3450, 3550*, 3750 [#]	3450, 3550*, 3750 [#]	3450, 3550*, 3750 [#]

The internal areas of the residential properties on the upper floors will generally be slightly larger than those on the lower floors because of the reducing thickness of the structural walls on the upper floors.
(Note: Not Applicable)

Notes :

1. The dimensions in the floor plans are all structural dimensions in millimetre.
- * Inclusive of the sunken depth of the sunken slab on the floor of this floor (100mm)
- # Inclusive of the sunken depth of the sunken slab on the floor of this floor (300mm)

因住宅物業的較高樓層的結構牆的厚度遞減，較高樓層的內部面積，一般比較低樓層的內部面積稍大。（註：不適用）

備註：

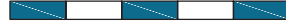
1. 樓面平面圖所列之尺寸為以毫米標示之建築結構尺寸。
- * 包括本層地台跌級樓板之跌級深度 (100毫米)
- # 包括本層地台跌級樓板之跌級深度 (300毫米)

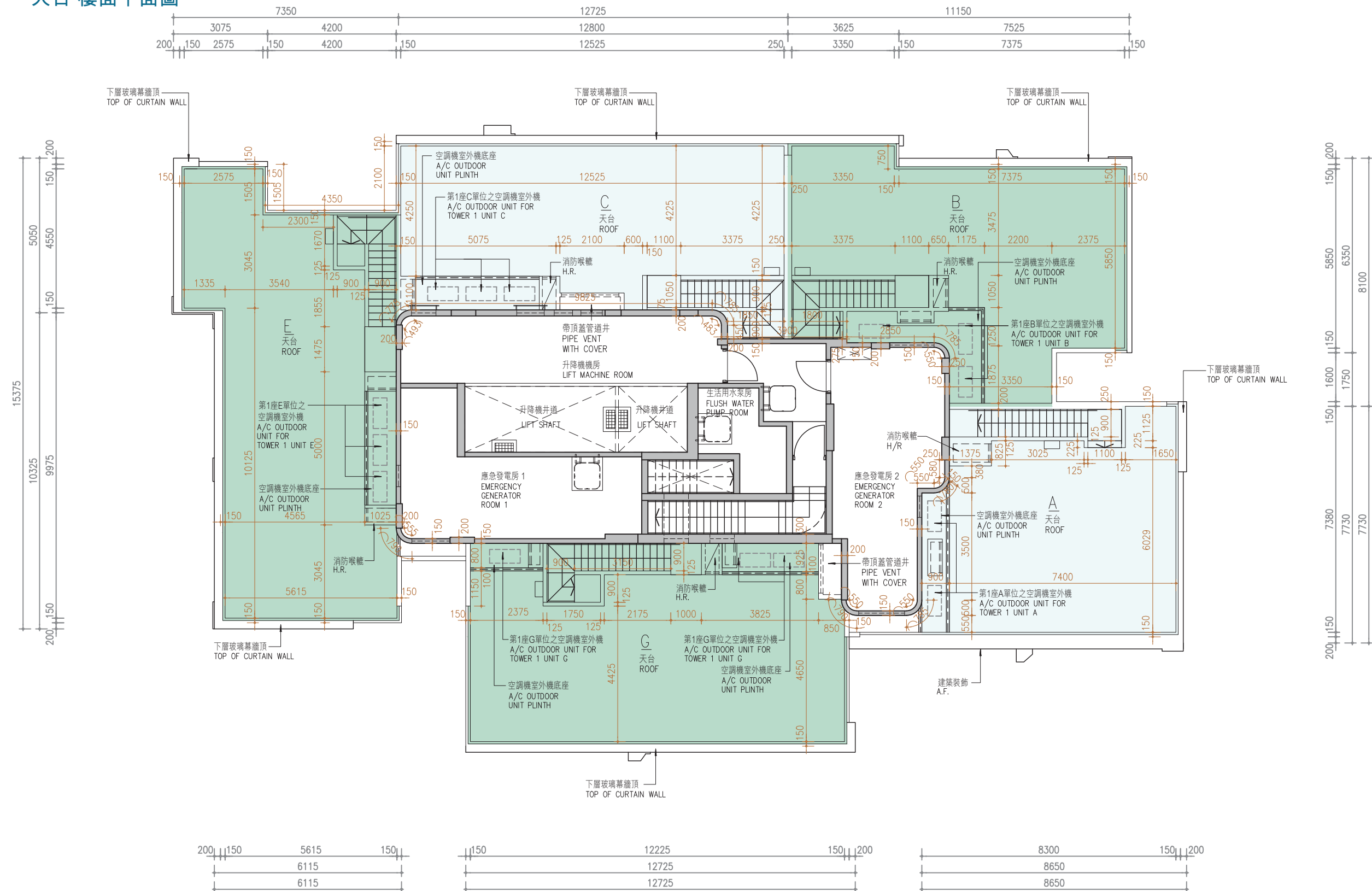
11 FLOOR PLANS OF RESIDENTIAL PROPERTIES IN THE PHASE

期數的住宅物業的樓面平面圖

TOWER 1 R/F FLOOR PLAN

第1座 天台 樓面平面圖

Scale:  5M/米
比例：0M/米 5M/米



TWO AIR-CONDITIONING OUTDOOR UNITS WILL BE INSTALLED WITH A DOUBLE DECK SYSTEM
兩部空調機室外機將會以雙層系統形式安裝

11

FLOOR PLANS OF RESIDENTIAL PROPERTIES IN THE PHASE
期數的住宅物業的樓面平面圖

	Tower 座數	Floor 樓層	Units 單位				
			A	B	C	E	G
The thickness of the floor slabs (excluding plaster) of each residential property (mm) 每個住宅物業的樓板（不包括灰泥）的厚度（毫米）	Tower 1 第1座	Roof 天台	N/A 不適用	N/A 不適用	N/A 不適用	N/A 不適用	N/A 不適用
The floor-to-floor height (i.e. the height between the top surface of the structural slab of a floor and the top surface of the structural slab of its immediate upper floor) of each residential property (mm) 每個住宅物業的層與層之間的高度（指該樓層之石屎地台面與上一層石屎地台面之高度距離）（毫米）			N/A 不適用	N/A 不適用	N/A 不適用	N/A 不適用	N/A 不適用

The internal areas of the residential properties on the upper floors will generally be slightly larger than those on the lower floors because of the reducing thickness of the structural walls on the upper floors.
(Note: Not Applicable)

Notes :

1. The dimensions in the floor plans are all structural dimensions in millimetre.

因住宅物業的較高樓層的結構牆的厚度遞減，較高樓層的內部面積，一般比較低樓層的內部面積稍大。（註：不適用）

備註：

1. 樓面平面圖所列之尺寸為以毫米標示之建築結構尺寸。