

8 AERIAL PHOTOGRAPH OF THE PHASE 期數的鳥瞰照片



This blank area falls outside the coverage of the relevant Aerial Photograph
鳥瞰照片並原覆蓋本空白範圍

● LOCATION OF THE PHASE 期數的位置

Survey and Mapping Office, Lands Department, The Government of HKSAR ©Copyright reserved - reproduction by permission only.

香港特別行政區政府地政總署測繪處©版權所有，未經許可，不得複製。

The aerial photograph is provided by the CSDI Portal and intellectual property rights are owned by the Government of the HKSAR.

鳥瞰照片由空間數據共享平台提供，香港特別行政區政府為知識產權擁有人。

Adopted from part of the aerial photograph taken by the Survey and Mapping Office, Lands Department at a flying height of 2,000 feet, photo No. E220075C, date of flight: 20th March 2024.

摘錄自地政總署測繪處在2,000呎的飛行高度拍攝之鳥瞰照片，照片編號E220075C，飛行日期：
2024年3月20日。

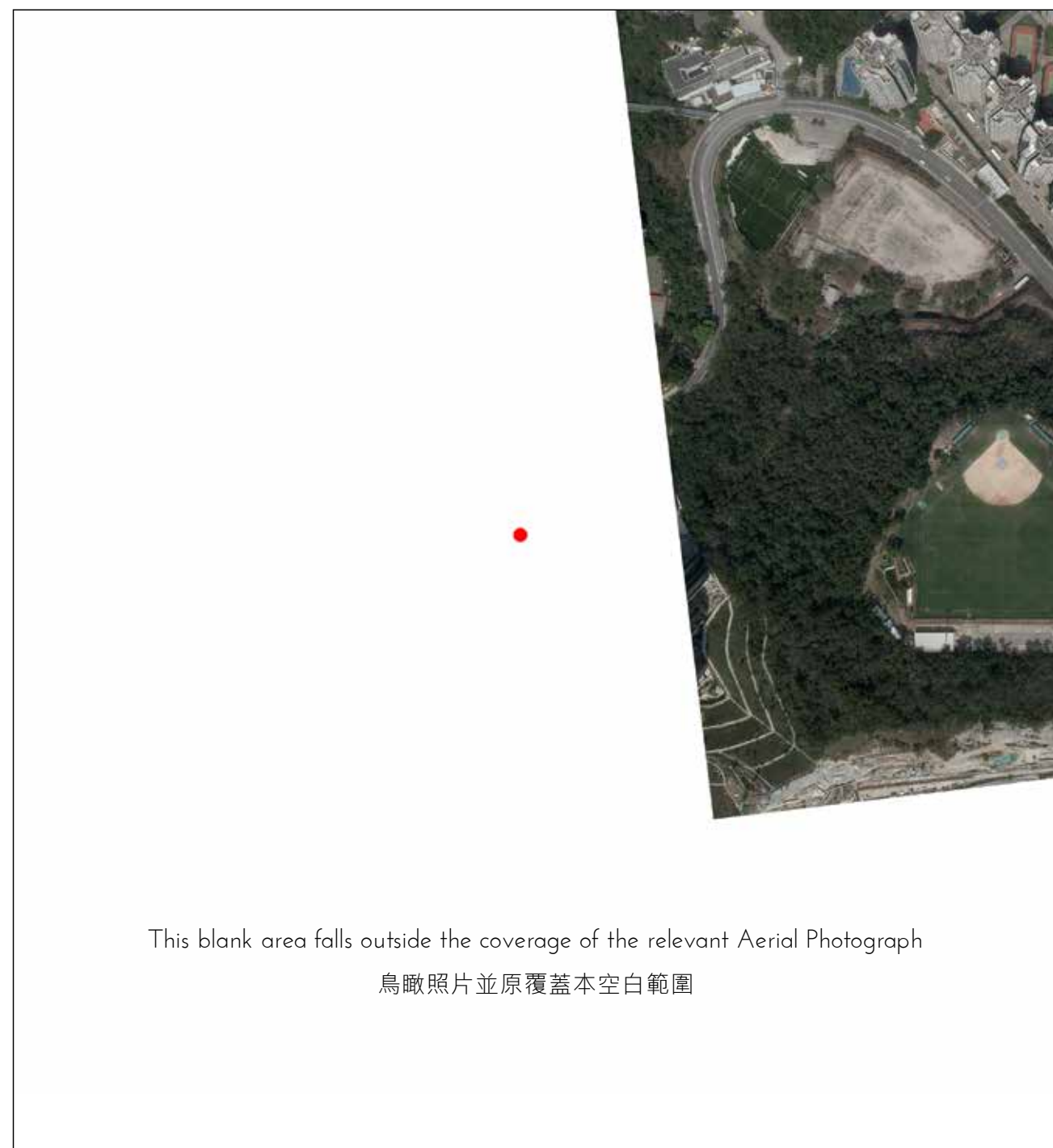
Notes:

1. Copy of the aerial photograph of the Phase is available for free inspection at the sales offices during opening hours.
2. The aerial photograph may show more than the area required under the Residential Properties (First-hand Sales) Ordinance due to technical reason that the boundary of the Phase is irregular.

備註：

1. 期數的鳥瞰照片之副本可於售樓處開放時間內免費查閱。
2. 由於期數的邊界不規則的技術原因，此照片所顯示之範圍可能多於《一手住宅物業銷售條例》所要求顯示之範圍。

8 AERIAL PHOTOGRAPH OF THE PHASE 期數的鳥瞰照片



● LOCATION OF THE PHASE 期數的位置

Survey and Mapping Office, Lands Department, The Government of HKSAR ©Copyright reserved - reproduction by permission only.

香港特別行政區政府地政總署測繪處©版權所有，未經許可，不得複製。

The aerial photograph is provided by the CSDI Portal and intellectual property rights are owned by the Government of the HKSAR.

鳥瞰照片由空間數據共享平台提供，香港特別行政區政府為知識產權擁有人。

Adopted from part of the aerial photograph taken by the Survey and Mapping Office, Lands Department at a flying height of 2,000 feet, photo No. E220078C, date of flight: 20th March 2024.

摘錄自地政總署測繪處在2,000呎的飛行高度拍攝之鳥瞰照片，照片編號E220078C，飛行日期：2024年3月20日。

Notes:

1. Copy of the aerial photograph of the Phase is available for free inspection at the sales offices during opening hours.
2. The aerial photograph may show more than the area required under the Residential Properties (First-hand Sales) Ordinance due to technical reason that the boundary of the Phase is irregular.

備註：

1. 期數的鳥瞰照片之副本可於售樓處開放時間內免費查閱。
2. 由於期數的邊界不規則的技術原因，此照片所顯示之範圍可能多於《一手住宅物業銷售條例》所要求顯示之範圍。

8 AERIAL PHOTOGRAPH OF THE PHASE

期數的鳥瞰照片

This blank area falls outside the coverage of the relevant Aerial Photograph
鳥瞰照片並未覆蓋本空白範圍



● LOCATION OF THE PHASE 期數的位置

Survey and Mapping Office, Lands Department, The Government of HKSAR ©Copyright reserved - reproduction by permission only.

香港特別行政區政府地政總署測繪處©版權所有，未經許可，不得複製。

The aerial photograph is provided by the CSDI Portal and intellectual property rights are owned by the Government of the HKSAR.

鳥瞰照片由空間數據共享平台提供，香港特別行政區政府為知識產權擁有人。

Adopted from part of the aerial photograph taken by the Survey and Mapping Office, Lands Department at a flying height of 2,000 feet, photo No. E220289C, date of flight: 20th March 2024.

摘錄自地政總署測繪處在2,000呎的飛行高度拍攝之鳥瞰照片，照片編號E220289C，飛行日期：2024年3月20日。

Notes:

1. Copy of the aerial photograph of the Phase is available for free inspection at the sales offices during opening hours.
2. The aerial photograph may show more than the area required under the Residential Properties (First-hand Sales) Ordinance due to technical reason that the boundary of the Phase is irregular.

備註：

1. 期數的鳥瞰照片之副本可於售樓處開放時間內免費查閱。
2. 由於期數的邊界不規則的技術原因，此照片所顯示之範圍可能多於《一手住宅物業銷售條例》所要求顯示之範圍。

8 AERIAL PHOTOGRAPH OF THE PHASE 期數的鳥瞰照片

This blank area falls outside the coverage of the relevant Aerial Photograph
鳥瞰照片並原覆蓋本空白範圍



● LOCATION OF THE PHASE 期數的位置

Survey and Mapping Office, Lands Department, The Government of HKSAR ©Copyright reserved - reproduction by permission only.

香港特別行政區政府地政總署測繪處©版權所有，未經許可，不得複製。

The aerial photograph is provided by the CSDI Portal and intellectual property rights are owned by the Government of the HKSAR.
鳥瞰照片由空間數據共享平台提供，香港特別行政區政府為知識產權擁有人。

Adopted from part of the aerial photograph taken by the Survey and Mapping Office, Lands Department at a flying height of 2,000 feet, photo No. E220291C, date of flight: 20th March 2024.

摘錄自地政總署測繪處在2,000呎的飛行高度拍攝之鳥瞰照片，照片編號E220291C，飛行日期：
2024年3月20日。

Notes:

1. Copy of the aerial photograph of the Phase is available for free inspection at the sales offices during opening hours.
2. The aerial photograph may show more than the area required under the Residential Properties (First-hand Sales) Ordinance due to technical reason that the boundary of the Phase is irregular.

備註：

1. 期數的鳥瞰照片之副本可於售樓處開放時間內免費查閱。
2. 由於期數的邊界不規則的技術原因，此照片所顯示之範圍可能多於《一手住宅物業銷售條例》所要求顯示之範圍。