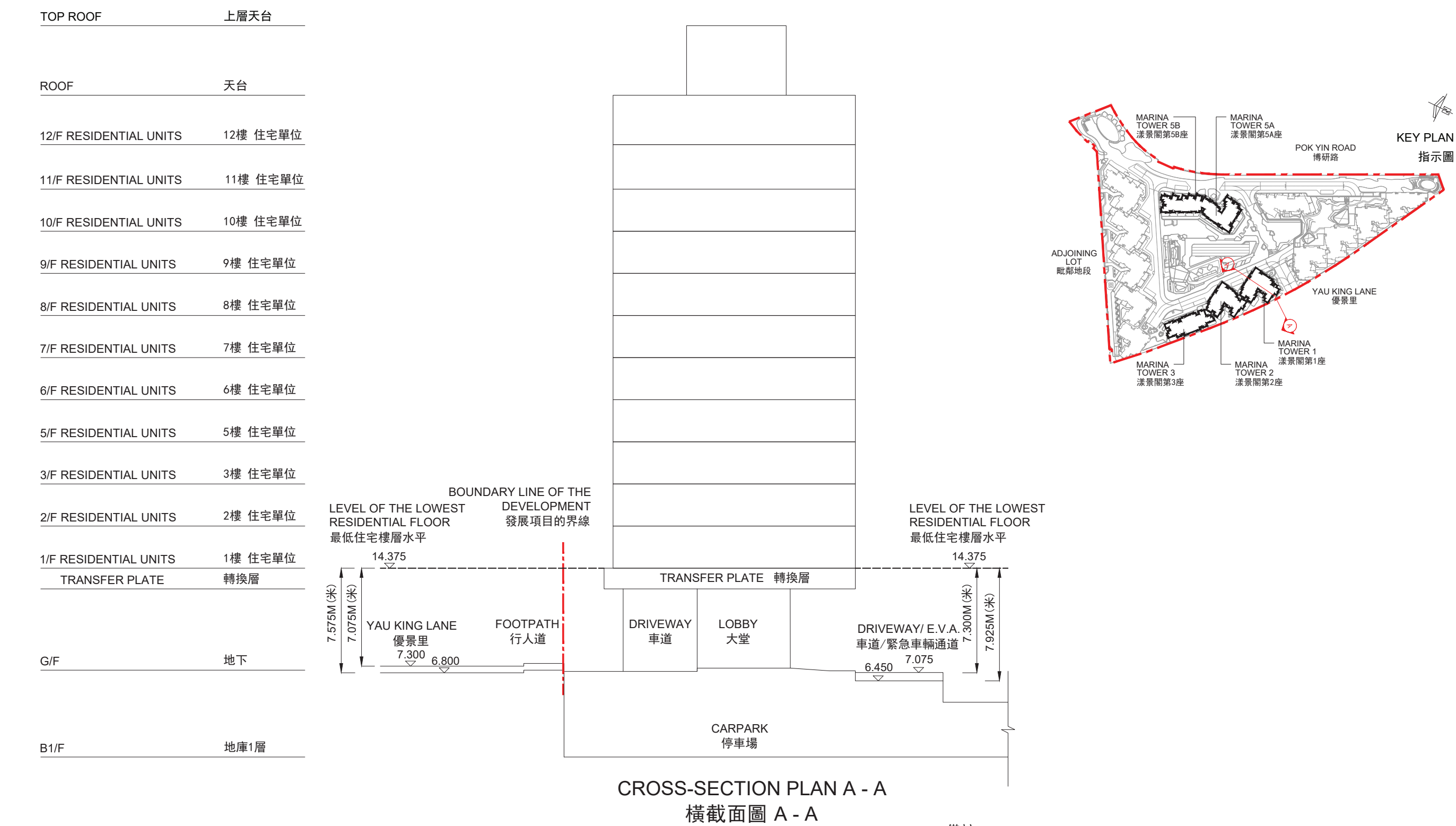


CROSS-SECTION PLAN OF BUILDING IN THE PHASE

期數中的建築物的橫截面圖

MARINA TOWER 1 漾景閣第1座



Notes:

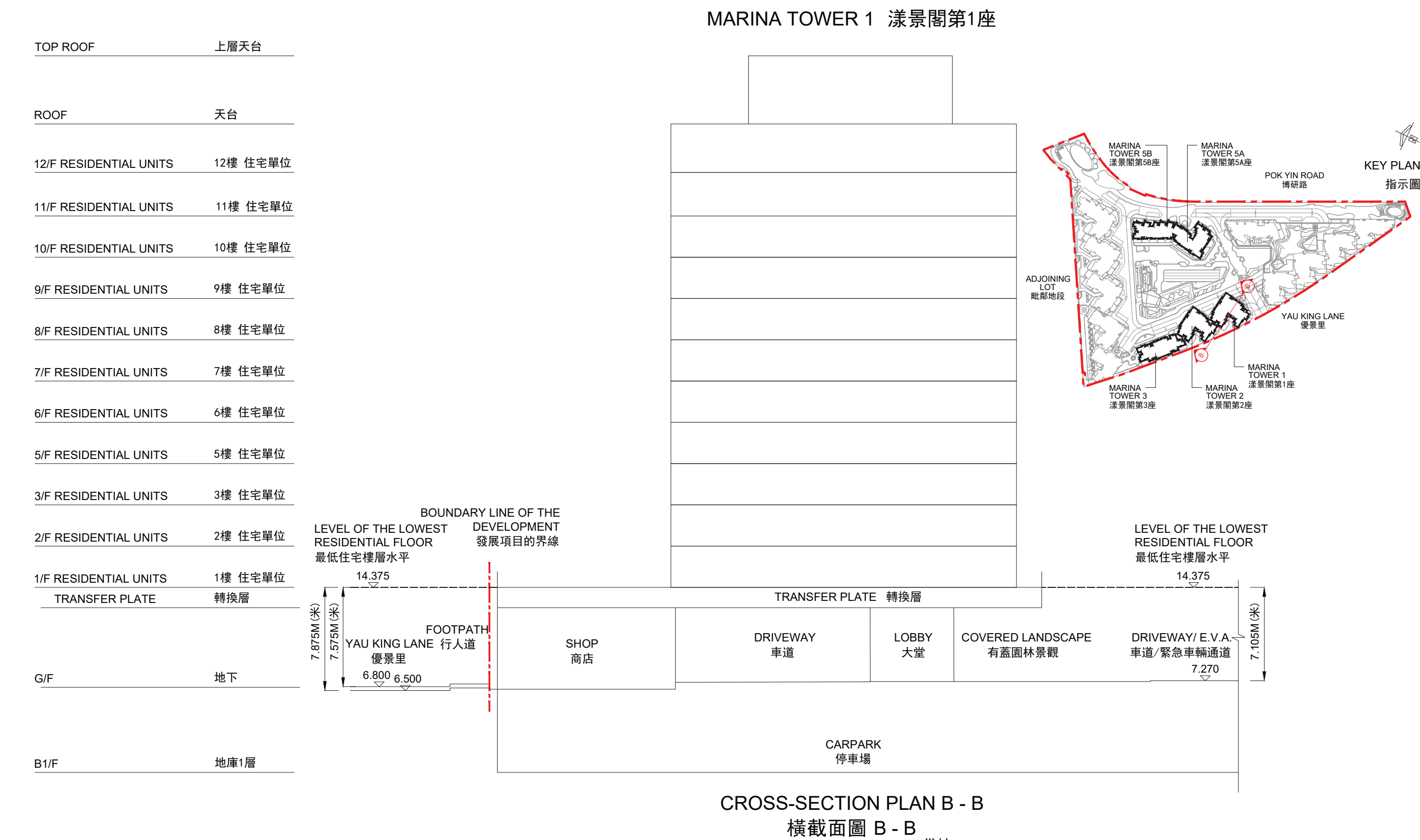
- ▽ Denotes height (in metres) above the Hong Kong Principal Datum.
- Dotted line denotes the level of the lowest residential floor.
- The part of Yau King Lane adjacent to the building is 6.800 metres to 7.300 metres above the Hong Kong Principal Datum.
- The part of Driveway/ Emergency Vehicular Access (E.V.A.) adjacent to the building is 6.450 metres to 7.075 metres above the Hong Kong Principal Datum.

備註:

- ▽ 代表香港主水平基準以上的高度(米)。
- 虛線代表期數中建築物之最低住宅樓層水平。
- 毗連建築物的一段優景里為香港主水平基準以上6.800米至7.300米。
- 毗連建築物的一段車道/緊急車輛通道為香港主水平基準以上6.450米至7.075米。

CROSS-SECTION PLAN OF BUILDING IN THE PHASE

期數中的建築物的橫截面圖



Notes:

- ▽ Denotes height (in metres) above the Hong Kong Principal Datum.
- Dotted line denotes the level of the lowest residential floor.
- The part of Yau King Lane adjacent to the building is 6.500 metres to 6.800 metres above the Hong Kong Principal Datum.
- The part of Driveway/ Emergency Vehicular Access (E.V.A.) adjacent to the building is 7.270 metres above the Hong Kong Principal Datum.

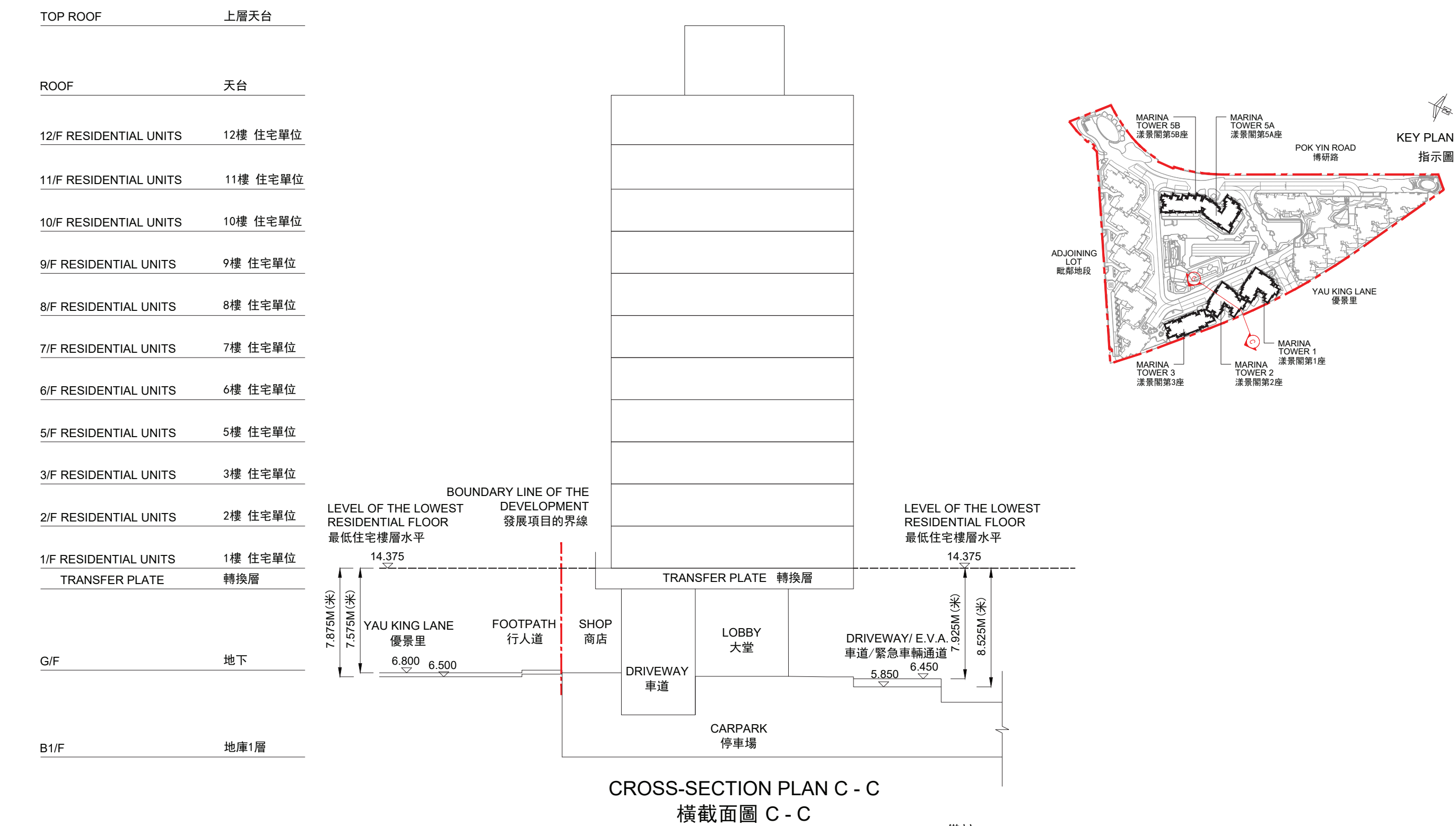
備註:

- ▽ 代表香港主水平基準以上的高度(米)。
- 虛線代表期數中建築物之最低住宅樓層水平。
- 毗連建築物的一段優景里為香港主水平基準以上6.500米至6.800米。
- 毗連建築物的一段車道/緊急車輛通道為香港主水平基準以上7.270米。

CROSS-SECTION PLAN OF BUILDING IN THE PHASE

期數中的建築物的橫截面圖

MARINA TOWER 2 漾景閣第2座



Notes:

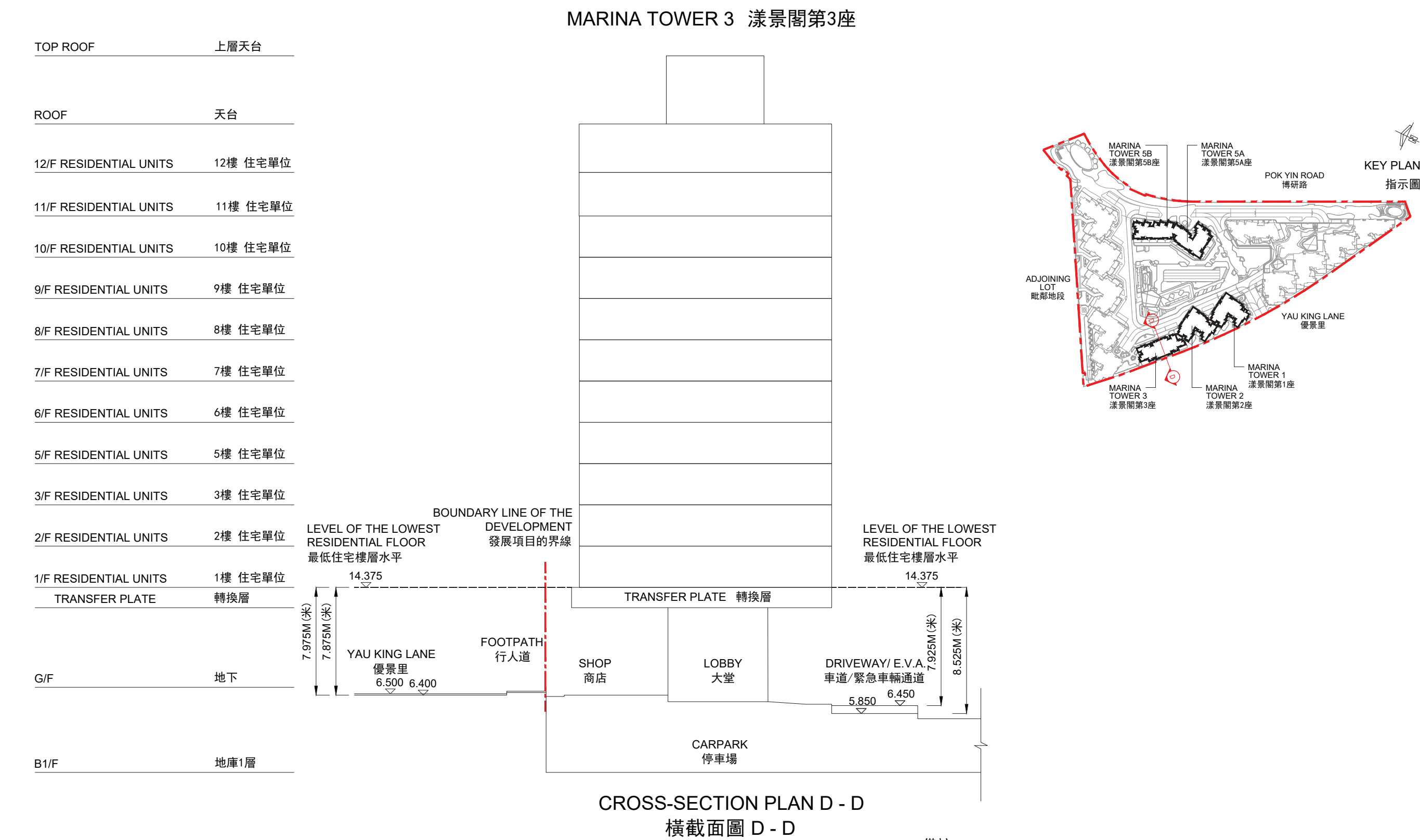
- ▽ Denotes height (in metres) above the Hong Kong Principal Datum.
- Dotted line denotes the level of the lowest residential floor.
- The part of Yau King Lane adjacent to the building is 6.500 metres to 6.800 metres above the Hong Kong Principal Datum.
- The part of Driveway/ Emergency Vehicular Access (E.V.A.) adjacent to the building is 5.850 metres to 6.450 metres above the Hong Kong Principal Datum.

備註:

- ▽ 代表香港主水平基準以上的高度(米)。
- 虛線代表期數中建築物之最低住宅樓層水平。
- 毗連建築物的一段優景里為香港主水平基準以上6.500米至6.800米。
- 毗連建築物的一段車道/緊急車輛通道為香港主水平基準以上5.850米至6.450米。

CROSS-SECTION PLAN OF BUILDING IN THE PHASE

期數中的建築物的橫截面圖



Notes:

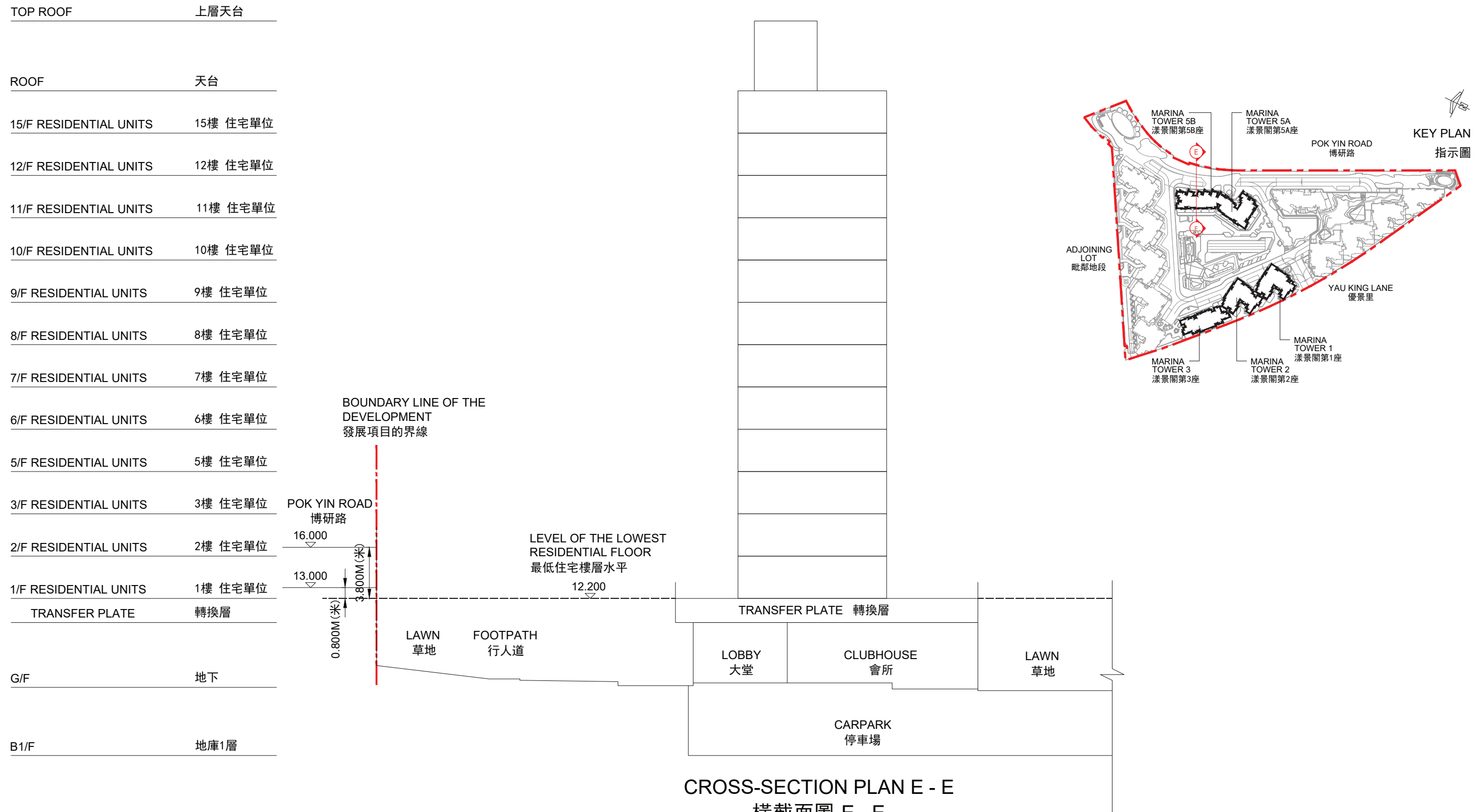
- ▽ Denotes height (in metres) above the Hong Kong Principal Datum.
- Dotted line denotes the level of the lowest residential floor.
- The part of Yau King Lane adjacent to the building is 6.400 metres to 6.500 metres above the Hong Kong Principal Datum.
- The part of Driveway/ Emergency Vehicular Access (E.V.A.) adjacent to the building is 5.850 metres to 6.450 metres above the Hong Kong Principal Datum.

備註:

- ▽ 代表香港主水平基準以上的高度(米)。
- 虛線代表期數中建築物之最低住宅樓層水平。
- 毗連建築物的一段優景里為香港主水平基準以上6.400米至6.500米。
- 毗連建築物的一段車道/緊急車輛通道為香港主水平基準以上5.850米至6.450米。

CROSS-SECTION PLAN OF BUILDING IN THE PHASE 期數中的建築物的橫截面圖

MARINA TOWER 5A AND TOWER 5B
漾景閣第5A座及第5B座



Notes:

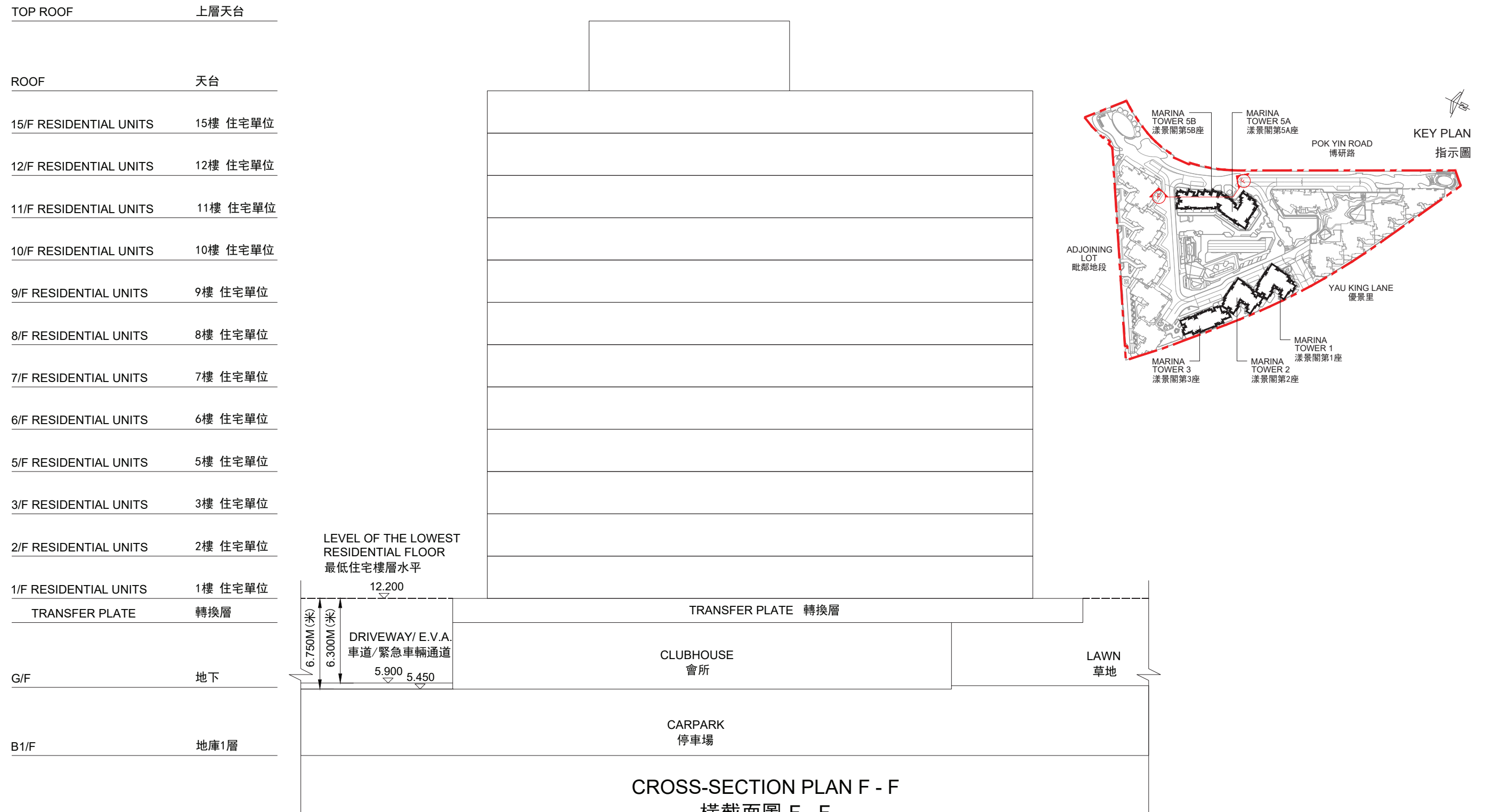
1. ▽ Denotes height (in metres) above the Hong Kong Principal Datum.
2. -- Dotted line denotes the level of the lowest residential floor.
3. The part of Pok Yin Road adjacent to the building is 13.000 metres to 16.000 metres above the Hong Kong Principal Datum.

備註:

1. ▽ 代表香港主水平基準以上的高度(米)。
2. —— 虛線代表期數中建築物之最低住宅樓層水平。
3. 毗連建築物的一段博研路為香港主水平基準以上13.000米至16.000米。

CROSS-SECTION PLAN OF BUILDING IN THE PHASE 期數中的建築物的橫截面圖

MARINA TOWER 5A AND TOWER 5B
漾景閣第5A座及第5B座



Notes:

1. ▽ Denotes height (in metres) above the Hong Kong Principal Datum.
2. --- Dotted line denotes the level of the lowest residential floor.
3. The part of Driveway/ Emergency Vehicular Access (E.V.A.) adjacent to the building is 5.450 metres to 5.900 metres above the Hong Kong Principal Datum.

備註:

1. ▽ 代表香港主水平基準以上的高度(米)。
2. — 虛線代表期數中建築物之最低住宅樓層水平。
3. 毗連建築物的一段車道/緊急車輛通道為香港主水平基準以上5.450米至5.900米。