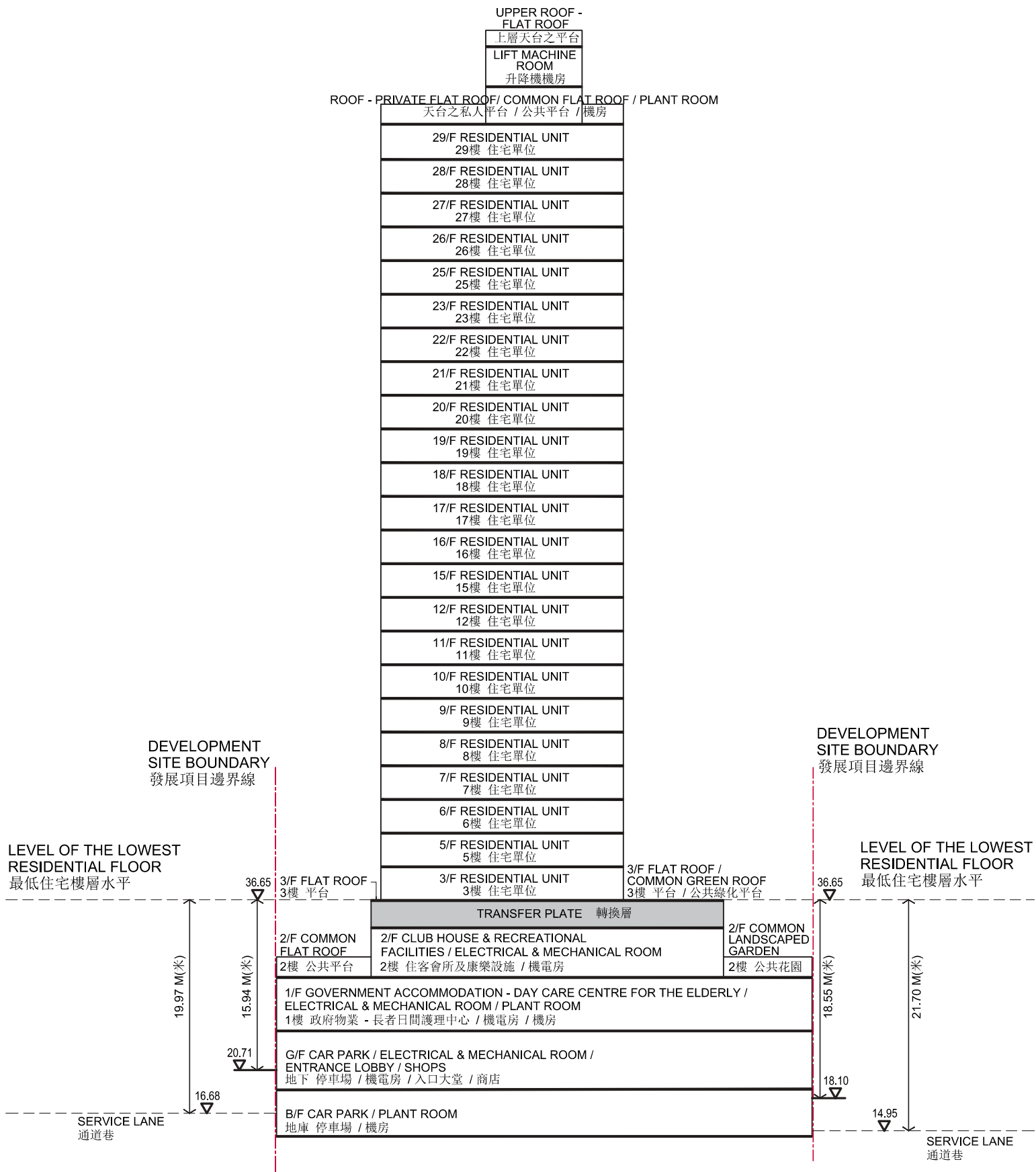


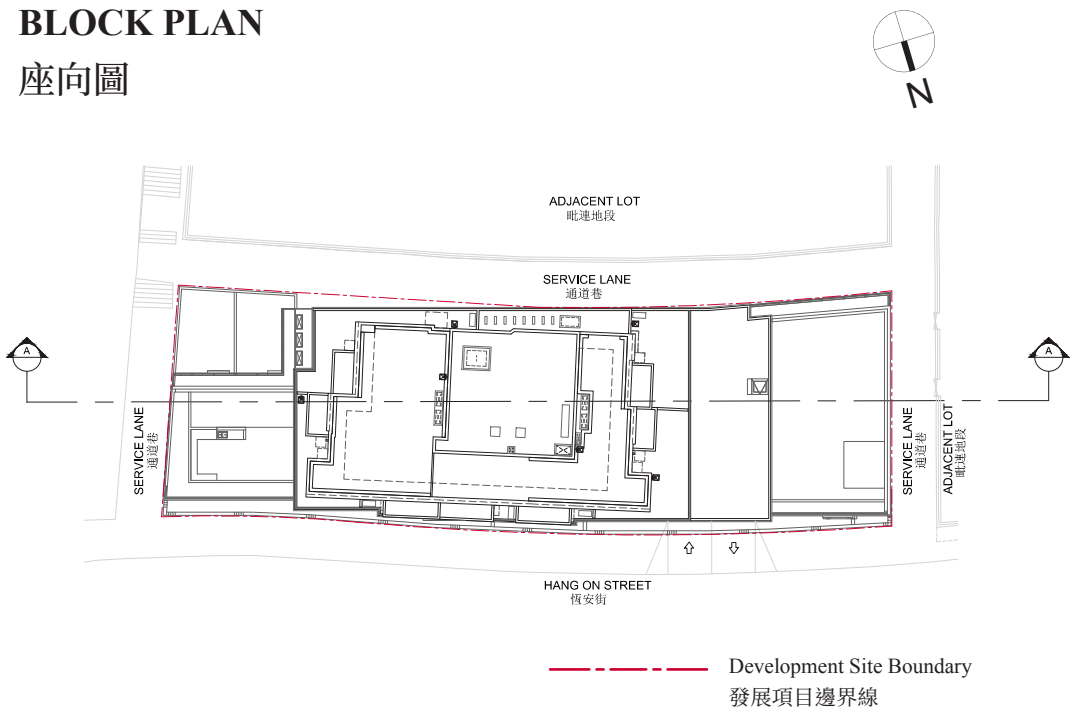
CROSS-SECTION PLAN OF BUILDING IN THE DEVELOPMENT  
發展項目中的建築物的橫截面圖

19

CROSS - SECTION PLAN A-A  
橫截面圖 A-A



BLOCK PLAN  
座向圖



1. The level of lowest residential floor of the building is 36.65 metres above Hong Kong Principal Datum (HKPD).
  2. The part of service lane adjacent to the west side of the building is 14.95 to 18.10 metres above Hong Kong Principal Datum (HKPD).
  3. The part of service lane adjacent to the east side of the building is 16.68 to 20.71 metres above Hong Kong Principal Datum (HKPD).
  4. ▽ Height (in metres) above Hong Kong Principal Datum (HKPD).
1. 發展項目之最低住宅層為香港主水平基準以上36.65米。
  2. 毗連建築物的西面的一段通道巷為香港主水平基準以上14.95米至18.10米。
  3. 毗連建築物的東面的一段通道巷為香港主水平基準以上16.68米至20.71米。
  4. ▽ 香港主水平基準以上高度(米)。

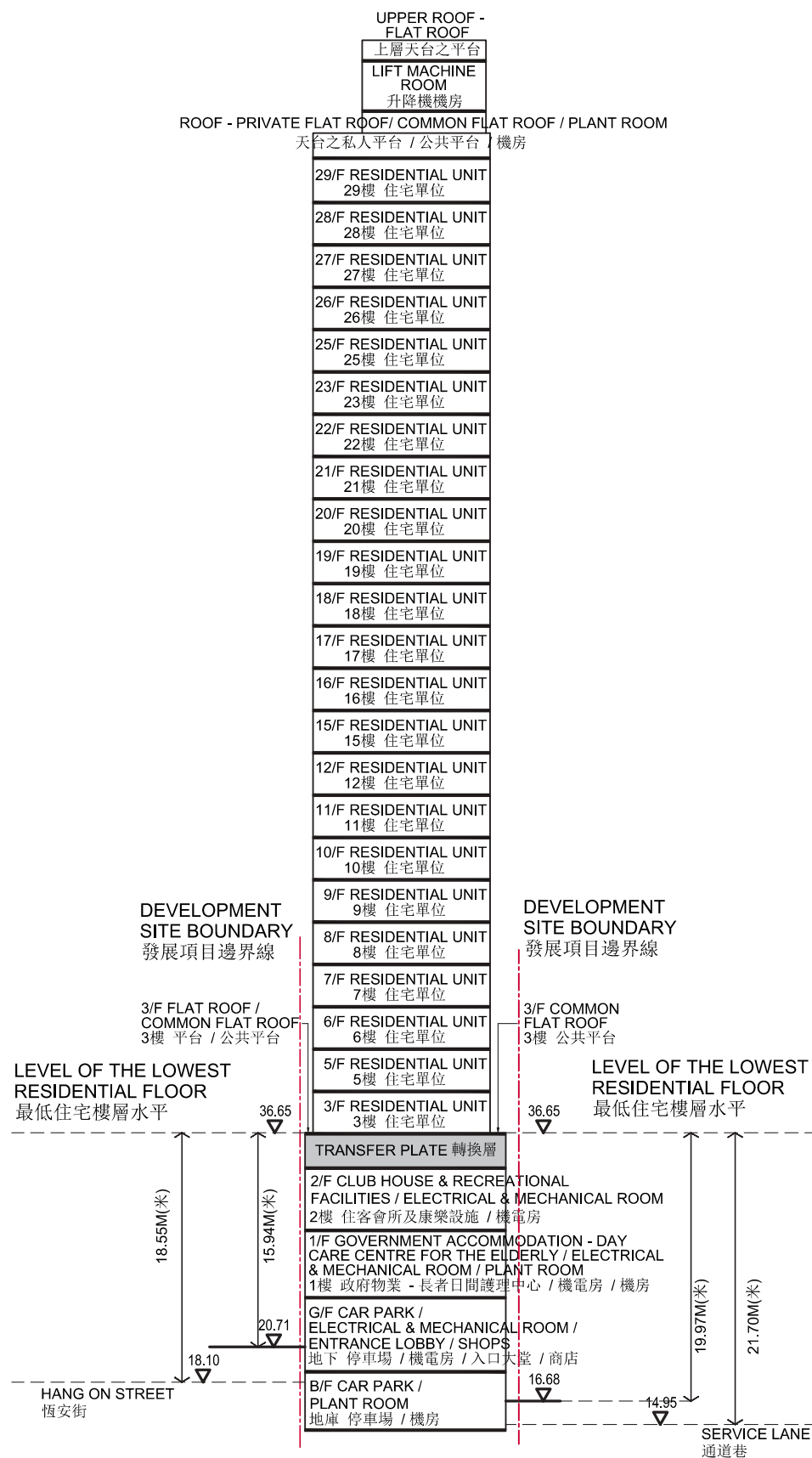
# CROSS-SECTION PLAN OF BUILDING IN THE DEVELOPMENT

## 發展項目中的建築物的橫截面圖

19

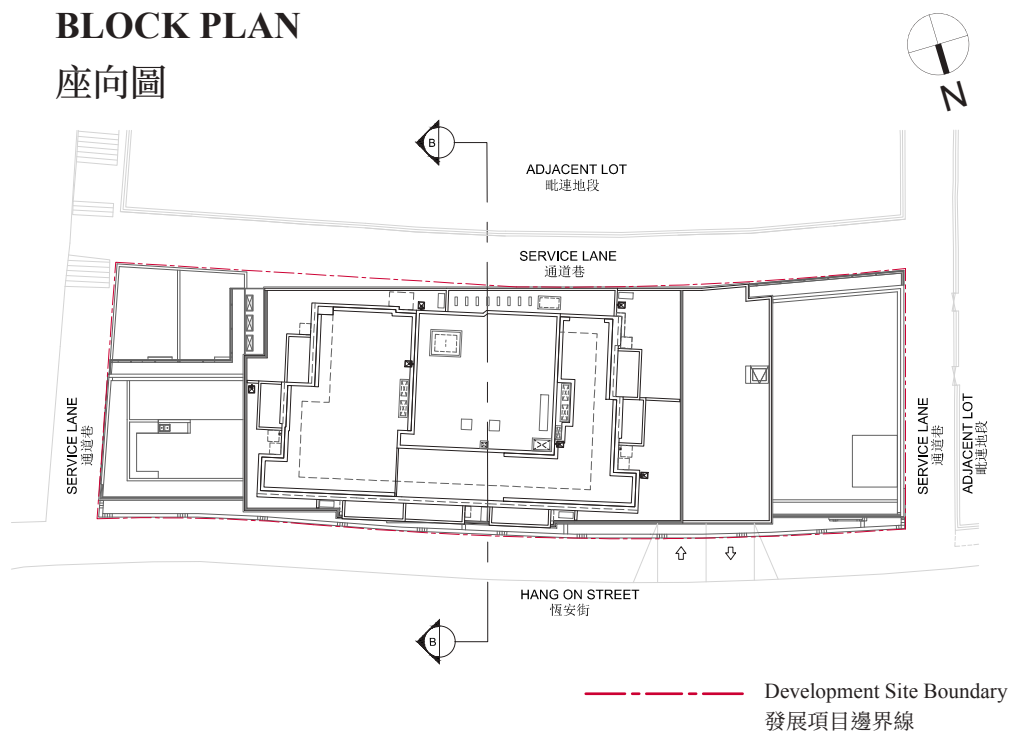
### CROSS - SECTION PLAN B-B

#### 橫截面圖 B-B



### BLOCK PLAN

#### 座向圖



1. The level of lowest residential floor of the building is 36.65 metres above Hong Kong Principal Datum (HKPD).
2. The part of Hang On Street adjacent to the north side of the building is 18.10 to 20.71 metres above Hong Kong Principal Datum (HKPD).
3. The part of service lane adjacent to the south side of the building is 14.95 to 16.68 metres above Hong Kong Principal Datum (HKPD).
4. ▽ Height (in metres) above Hong Kong Principal Datum (HKPD).

1. 發展項目之最低住宅層為香港主水平基準以上36.65米。
2. 毗連建築物的北面的一段恆安街為香港主水平基準以上18.10米至20.71米。
3. 毗連建築物的南面的一段通道巷為香港主水平基準以上14.95米至16.68米。
4. ▽ 香港主水平基準以上高度(米)。