

Legend of terms and abbreviations used on the floor plans
樓面平面圖中所使用名詞及簡稱之圖例

AF	= Architectural Feature	= 建築裝飾
AF FOR 7/F & ABOVE AT ALTERNATIVE FLOOR	= Architectural Feature for 7/F and Above at Alternative Floor	= 7樓及以上隔層建築裝飾
A/C	= Air Conditioner Platform	= 冷氣機平台
A/C FOR FLAT A	= Air Conditioner Platform for Flat A	= A單位冷氣機平台
A/C FOR FLAT D	= Air Conditioner Platform for Flat D	= D單位冷氣機平台
A/C FOR FLAT E	= Air Conditioner Platform for Flat E	= E單位冷氣機平台
BAL	= Balcony	= 露台
BAL/UP ABOVE	= Balcony and Utility Platform Above	= 上層露台及工作平台
BATH	= Bathroom	= 浴室
COMMON FLAT ROOF	= Common Flat Roof	= 公用平台
D	= Down	= 下
DESIGNATED COMMON AREA FOR MAINTENANCE WORK	= Designated Common Area for Maintenance Work	= 供維修工作之指定公用範圍
DOG HOUSE	= Dog House	= 室外管道檢井
ELV	= Extra Low Voltage Cable Duct	= 特低壓電線槽
EL	= Electrical Room	= 電力房
EL/ELV	= Electrical Room/ Extra Low Voltage Cable Duct	= 電力房/ 特低壓電線槽
FLAT ROOF	= Flat Roof	= 平台
HR AT H/L	= Hose Reel at High Level	= 位於高位的消防喉轆
LIFT	= Lift	= 升降機
FLL	= Fireman's Lift Lobby	= 消防員升降機大堂
LIV/DIN	= Living Room and Dining Room	= 客廳及飯廳
LMR	= Lift Machine Room	= 升降機房
MAINTENANCE FLAT ROOF	= Maintenance Flat Roof	= 維修平台
MBR	= Master Bedroom	= 主人睡房
MG	= Metal Grille	= 金屬格柵
ML	= Metal Louvre	= 金屬百葉
O KIT	= Open Kitchen	= 開放式廚房
PD	= Pipe Duct	= 管道槽
ROOF (FOR FLAT A)	= Roof (for Flat A)	= 天台 (A單位)
ROOF (FOR FLAT B)	= Roof (for Flat B)	= 天台 (B單位)
ROOF (FOR FLAT C)	= Roof (for Flat C)	= 天台 (C單位)
ROOF (FOR FLAT D)	= Roof (for Flat D)	= 天台 (D單位)
ROOF (FOR FLAT E)	= Roof (for Flat E)	= 天台 (E單位)
T/BAL & UP	= Top of Balcony and Utility Platform	= 露台及工作平台上蓋
UP	= Utility Platform	= 工作平台
U	= Up	= 上
WMR	= Water Meter Room	= 水錶房

**Notes (applicable to the floor plans of this section) :**

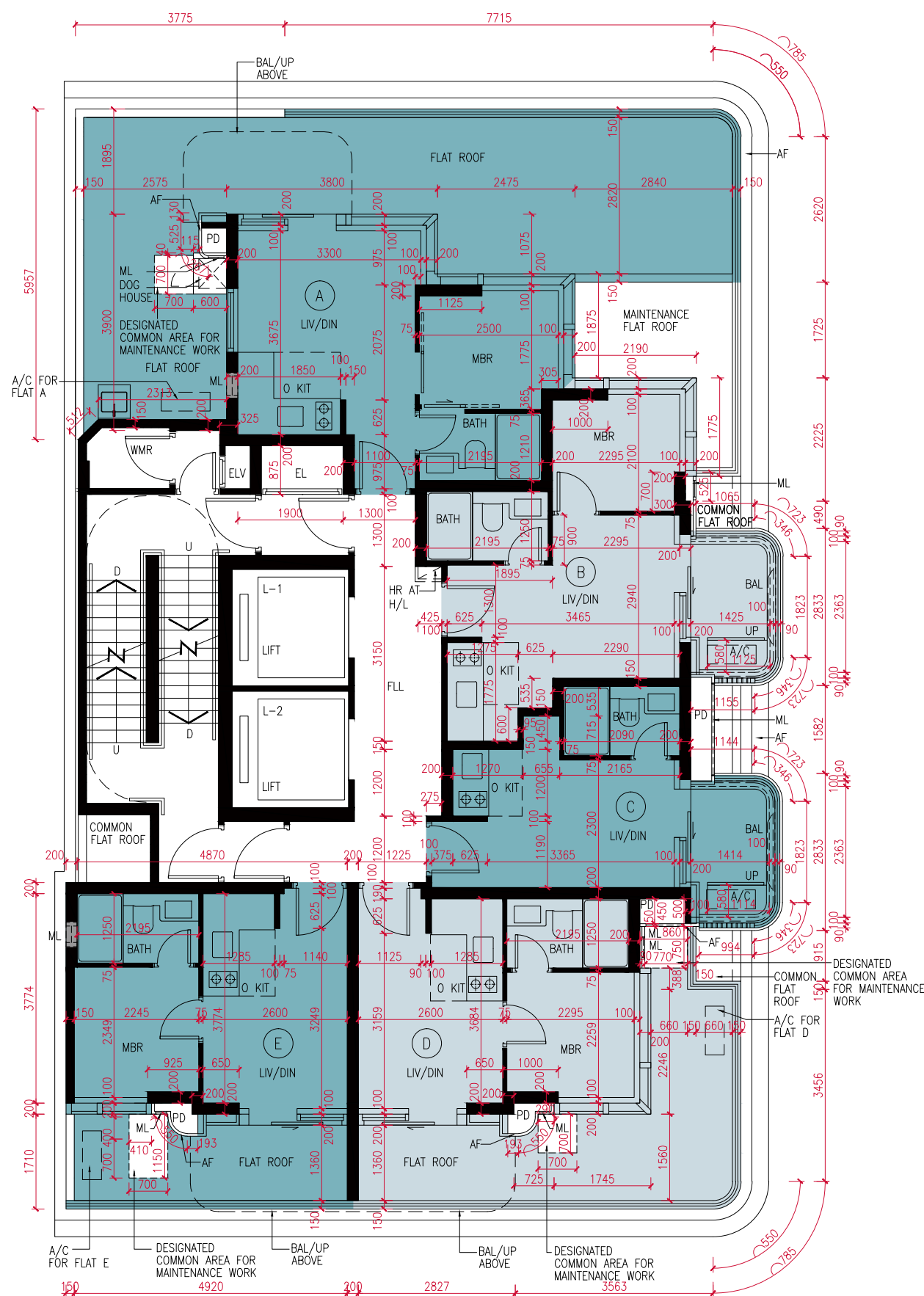
- There are architectural features, metal grilles and/or exposed pipes on the external walls of some of the floors. For details, please refer to the latest approved building plans.
- Common pipes exposed and/or enclosed in cladding are located at/ adjacent to the balcony and/or flat roof and/or air conditioner platform and/or external wall of some residential units. For details, please refer to the latest approved building plans and/or approved drainage plans.
- There are sunken slabs (for mechanical & electrical services of units above) and/or ceiling bulkheads for the air conditioning fittings and/or mechanical & electrical services at some residential units.
- There are exposed pipes located at the upper part of some utility platforms and some balconies.
- Balconies and utility platforms are non-enclosed areas.
- Symbols of fittings and fitments shown in the floor plans such as sink, water closet, shower, sink counter, etc. are prepared based on the latest approved building plans and are for indication of approximate location only.

備註(適用於本節之各樓面平面圖)：

- 部分樓層外牆範圍設有建築裝飾、金屬格柵及/或外露喉管，詳細資料請參考最新批准的建築圖則。
- 部分住宅單位的露台及/或平台及/或冷氣機平台及/或外牆上/附近設有外露及/或外牆裝飾板內藏之公用喉管，詳細資料請參考最新批准的建築圖則及/或排水設施圖。
- 部分住宅單位天花有跌級樓板(用以安裝樓上單位之機電設備)及/或假陣內裝置空調裝備及/或機電設備。
- 部分工作平台及部分露台上方裝有外露喉管。
- 露台及工作平台為非封閉的地方。
- 樓面平面圖上所顯示的裝置符號，如洗滌盆、座廁、花灑、洗滌盆櫃等乃按最新的經批准的建築圖則繪製，只作示意大概位置之用途。

5/F FLOOR PLAN

5樓平面圖

0M(米) 5M(米)
1:100

Description 描述	Floor 樓層	Flat 單位				
		A	B	C	D	E
The thickness of the floor slabs (excluding plaster) of each residential property (mm) 每個住宅物業的樓板(不包括灰泥)的厚度(毫米)	5/F 5樓	150, 300	150, 300	150, 300	150, 300	150, 300
The floor-to-floor height of each residential property (mm) 每個住宅物業的層與層之間的高度(毫米)		2800, 3075, 3050, 3150	2800, 2900, 3075, 3150	2800, 2900, 3075, 3150	2800, 3050, 3075, 3150	2800, 2900, 3050, 3075, 3150

The internal areas of the residential properties on the upper floors will generally be slightly larger than those on the lower floors because of the reducing thickness of the structural walls on the upper floors.
(Note: This statement required in section 10(2)(e) in Part 1 of Schedule 1 to the Residential Properties (First-hand Sales) Ordinance is not applicable to the Development.)
因住宅物業的較高樓層的結構牆的厚度遞減，較高樓層的內部面積，一般比較低樓層的內部面積稍大。
(註：此根據《一手住宅物業銷售條例》附表1第1部第10(2)(e)條所規定的陳述不適用於發展項目。)

Notes:

- The dimensions in the floor plans are all structural dimensions in millimetre.
- Please refer to pages 17-18 of this sales brochure for legend of the terms and abbreviations in studying the floor plans of residential properties.

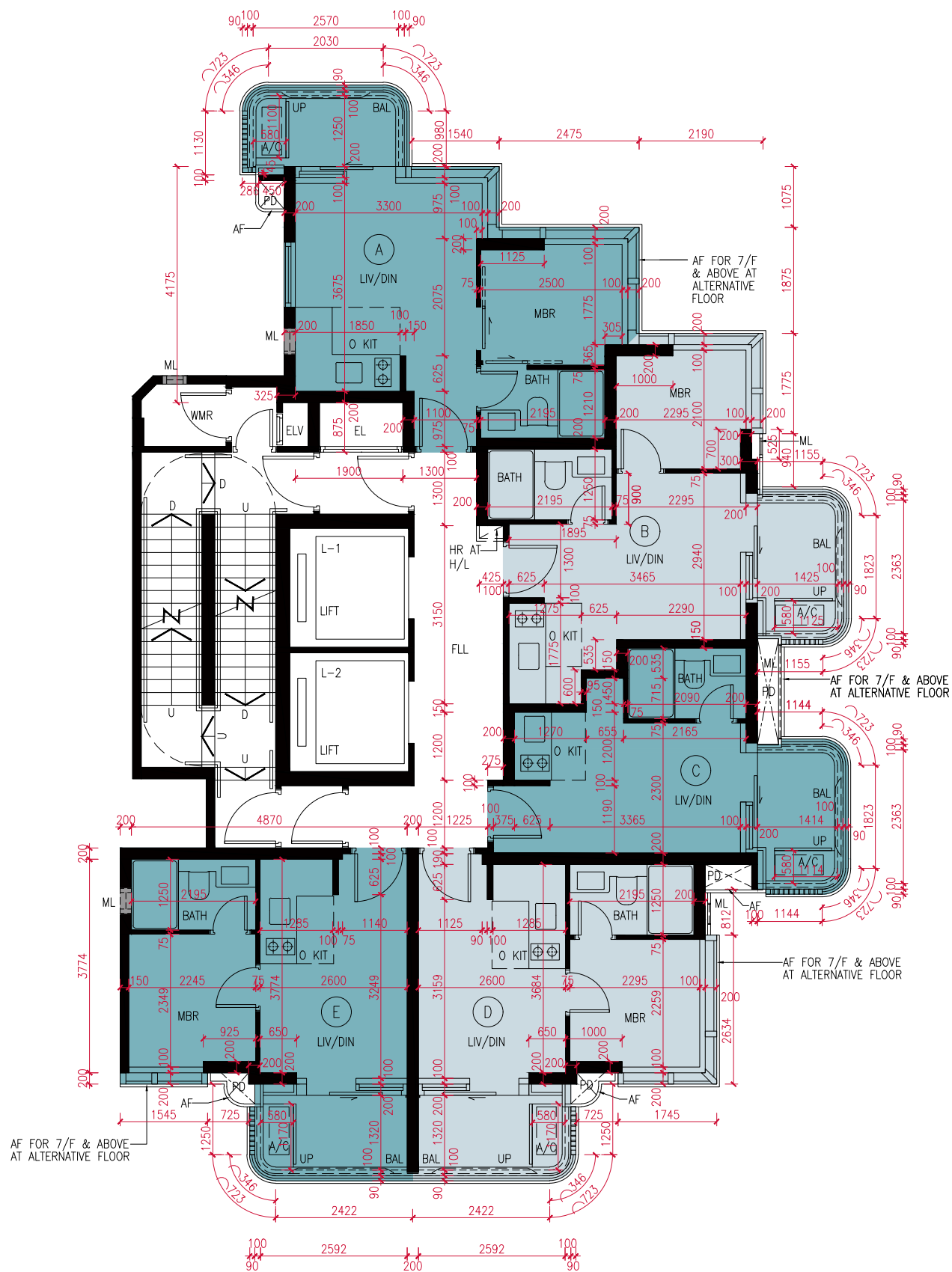
備註:

- 樓面平面圖之尺規所列數字為以毫米標示之建築結構尺寸。
- 請參閱本售樓說明書第17-18頁之圖例以協助閱讀此部分的住宅物業的樓面平面圖及其顯示之名詞及簡稱。



6/F-12/F,15/F-23/F and 25/F-27/F FLOOR PLAN

6樓至12樓、15樓至23樓及25樓至27樓平面圖



0M(米) 5M(米)
1:100

Description 描述	Floor 樓層	Flat 單位				
		A	B	C	D	E
The thickness of the floor slabs (excluding plaster) of each residential property (mm) 每個住宅物業的樓板(不包括灰泥)的厚度(毫米)	6/F-12/F, 15/F-23/F& 25/F-27/F	150, 300	150, 300	150, 300	150, 300	150, 300
The floor-to-floor height of each residential property (mm) 每個住宅物業的層與層之間的高度(毫米)	6樓至12樓、 15樓至23樓及 25樓至27樓	2800, 3075, 3150	2800, 2900, 3075, 3150	2800, 2900, 3075, 3150	2800, 3075, 3150	2800, 2900, 3075, 3150

The internal areas of the residential properties on the upper floors will generally be slightly larger than those on the lower floors because of the reducing thickness of the structural walls on the upper floors.
(Note: This statement required in section 10(2)(e) in Part 1 of Schedule 1 to the Residential Properties (First-hand Sales) Ordinance is not applicable to the Development.)
因住宅物業的較高樓層的結構牆的厚度遞減，較高樓層的內部面積，一般比較低樓層的內部面積稍大。
(註：此根據《一手住宅物業銷售條例》附表1第1部第10(2)(e)條所規定的陳述不適用於發展項目。)

Notes:

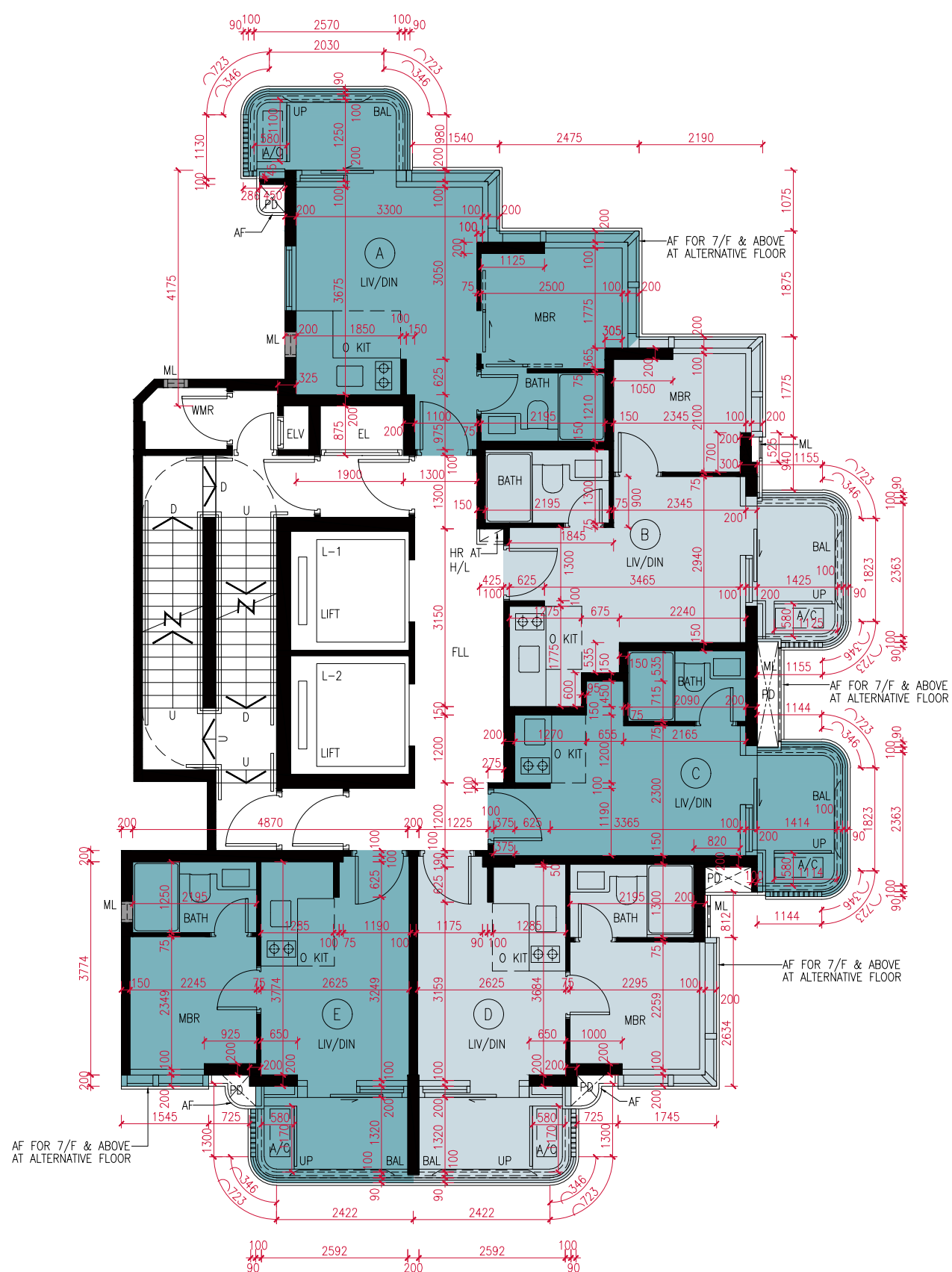
- The dimensions in the floor plans are all structural dimensions in millimetre.
- Please refer to pages 17-18 of this sales brochure for legend of the terms and abbreviations in studying the floor plans of residential properties.

備註:

- 樓面平面圖之尺規所列數字為以毫米標示之建築結構尺寸。
- 請參閱本售樓說明書第17-18頁之圖例以協助閱讀此部分的住宅物業的樓面平面圖及其顯示之名詞及簡稱。

28/F FLOOR PLAN

28樓平面圖

0M(米) 5M(米)
1:100

Description 描述	Floor 樓層	Flat 單位				
		A	B	C	D	E
The thickness of the floor slabs (excluding plaster) of each residential property (mm) 每個住宅物業的樓板(不包括灰泥)的厚度(毫米)	28/F 28樓	200, 300	200, 300	200, 300	200, 300	200, 300
The floor-to-floor height of each residential property (mm) 每個住宅物業的層與層之間的高度(毫米)		3900, 4000	3900, 4000	3900, 4000	3900, 4000	3900, 4000
The internal areas of the residential properties on the upper floors will generally be slightly larger than those on the lower floors because of the reducing thickness of the structural walls on the upper floors. (Note: This statement required in section 10(2)(e) in Part 1 of Schedule 1 to the Residential Properties (First-hand Sales) Ordinance is not applicable to the Development.) 因住宅物業的較高樓層的結構牆的厚度遞減,較高樓層的內部面積,一般比較低樓層的內部面積稍大。 (註:此根據《一手住宅物業銷售條例》附表1第1部第10(2)(e)條所規定的陳述不適用於發展項目。)						

Notes:

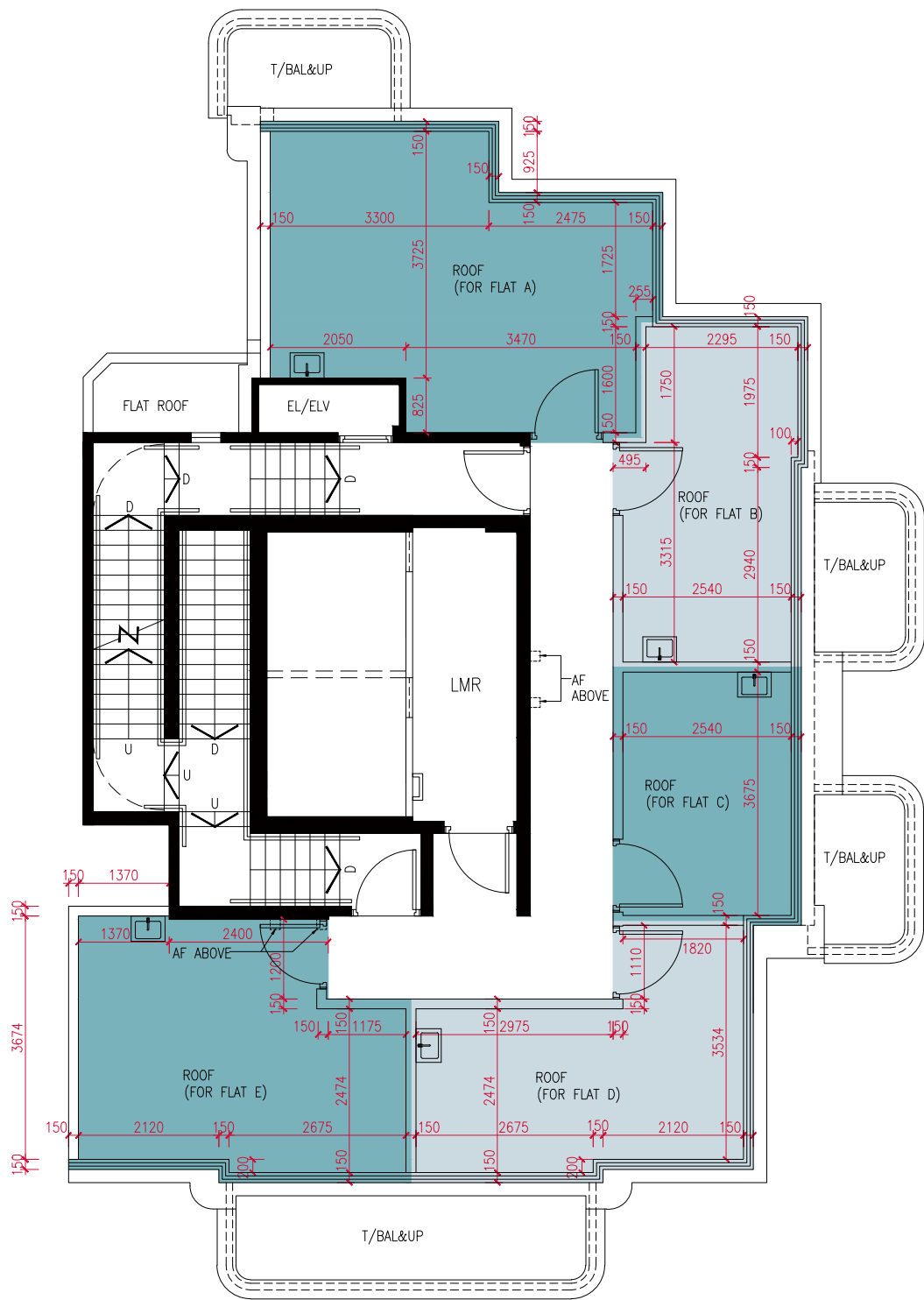
- The dimensions in the floor plans are all structural dimensions in millimetre.
- Please refer to pages 17-18 of this sales brochure for legend of the terms and abbreviations in studying the floor plans of residential properties.

備註:

- 樓面平面圖之尺規所列數字為以毫米標示之建築結構尺寸。
- 請參閱本售樓說明書第17-18頁之圖例以協助閱讀此部分的住宅物業的樓面平面圖及其顯示之名詞及簡稱。



ROOF FLOOR PLAN
天台平面圖



0M(米) 5M(米)
1 : 100

Description 描述	Floor 樓層	Flat 單位				
		A	B	C	D	E
The thickness of the floor slabs (excluding plaster) of each residential property (mm) 每個住宅物業的樓板(不包括灰泥)的厚度(毫米)	Roof 天台	Not Applicable 不適用	Not Applicable 不適用	Not Applicable 不適用	Not Applicable 不適用	Not Applicable 不適用
The floor-to-floor height of each residential property (mm) 每個住宅物業的層與層之間的高度(毫米)		Not Applicable 不適用	Not Applicable 不適用	Not Applicable 不適用	Not Applicable 不適用	Not Applicable 不適用
The internal areas of the residential properties on the upper floors will generally be slightly larger than those on the lower floors because of the reducing thickness of the structural walls on the upper floors. (Note: This statement required in section 10(2)(e) in Part 1 of Schedule 1 to the Residential Properties (First-hand Sales) Ordinance is not applicable to the Development.) 因住宅物業的較高樓層的結構牆的厚度遞減，較高樓層的內部面積，一般比較低樓層的內部面積稍大。 (註：此根據《一手住宅物業銷售條例》附表1第1部第10(2)(e)條所規定的陳述不適用於發展項目。)						

Notes:

- The dimensions in the floor plans are all structural dimensions in millimetre.
- Please refer to pages 17-18 of this sales brochure for legend of the terms and abbreviations in studying the floor plans of residential properties.

備註：

- 樓面平面圖之尺規所列數字為以毫米標示之建築結構尺寸。
- 請參閱本售樓說明書第17-18頁之圖例以協助閱讀此部分的住宅物業的樓面平面圖及其顯示之名詞及簡稱。