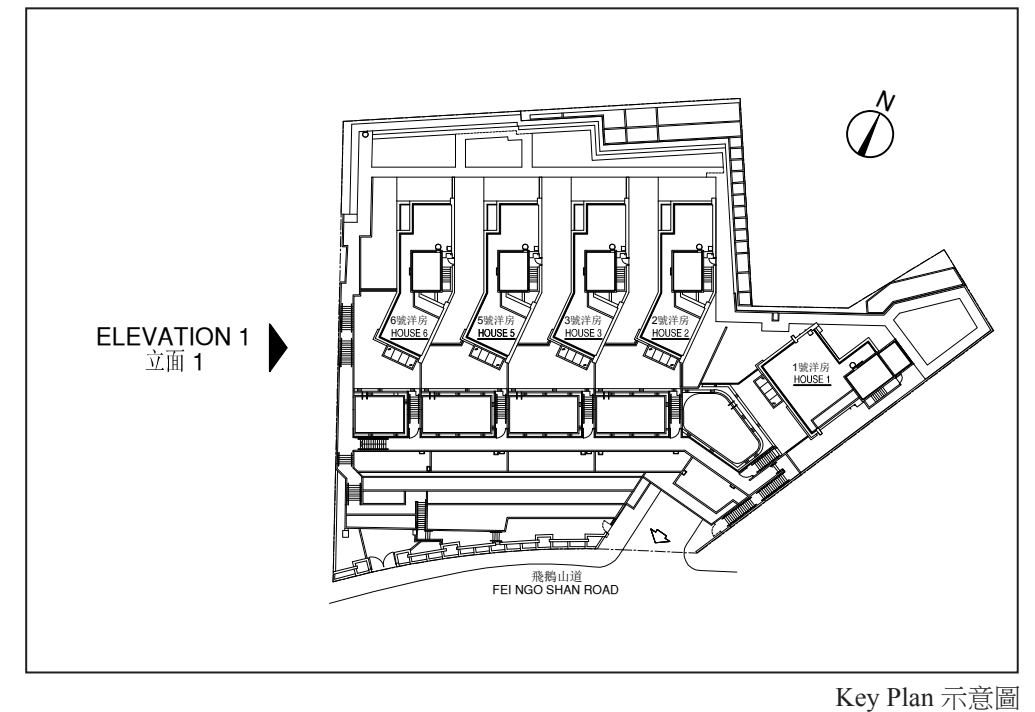
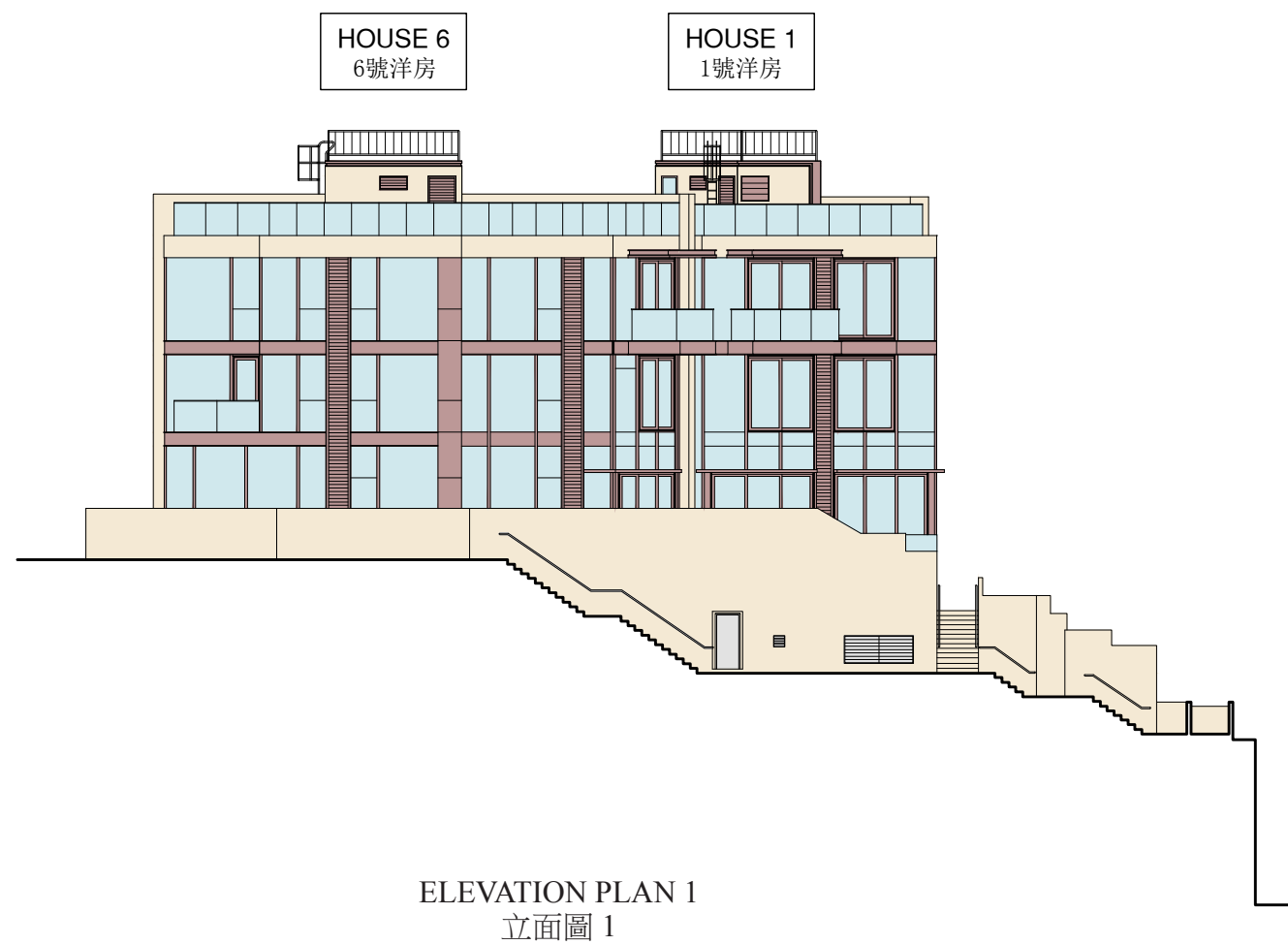


20 | ELEVATION PLAN 立面圖

ELEVATION PLAN 1
立面圖 1



Authorized person for the Development certified that the elevations shown on this plan:
(a) are prepared on the basis of the approved building plans for the Development as of 13 July 2018; and
(b) are in general accordance with the outward appearance of the Development.

發展項目的認可人士證明本圖所顯示的立面：
(a) 以2018年7月13日的情況為準的本發展項目的經批准的建築圖則為基礎擬備；及
(b) 大致上與本發展項目的外觀一致。

20 | ELEVATION PLAN 立面圖

LATEST ELEVATION PLAN 1

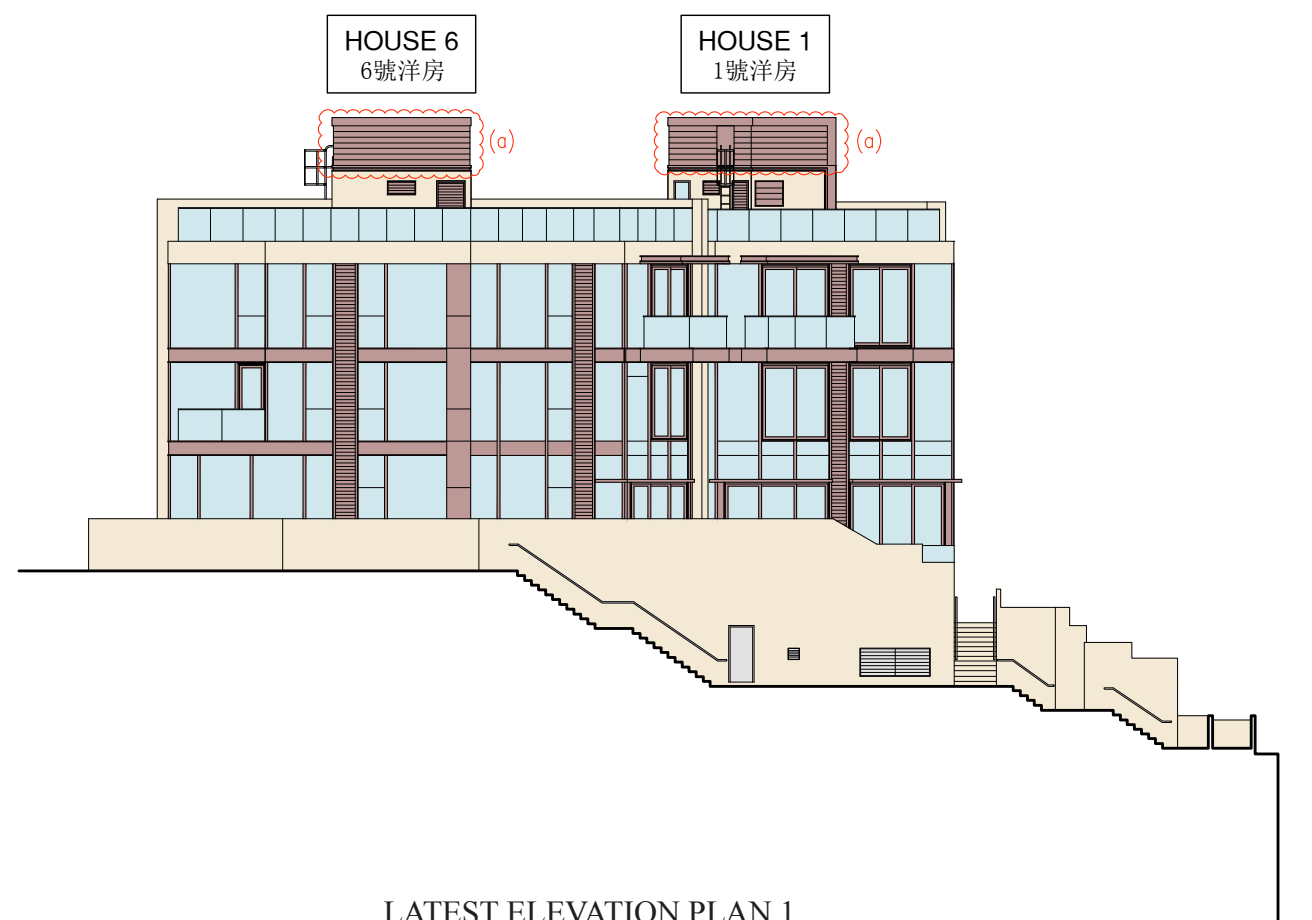
現狀立面圖 1

House 1 and House 6 have been altered by way of minor works under the Buildings Ordinance after completion of the Development. The approximate locations of the alterations that can be indicated on the latest elevation plans are indicated thereon and the details of such alterations are set out below (the below numberings refer to the marked alterations on the plan):

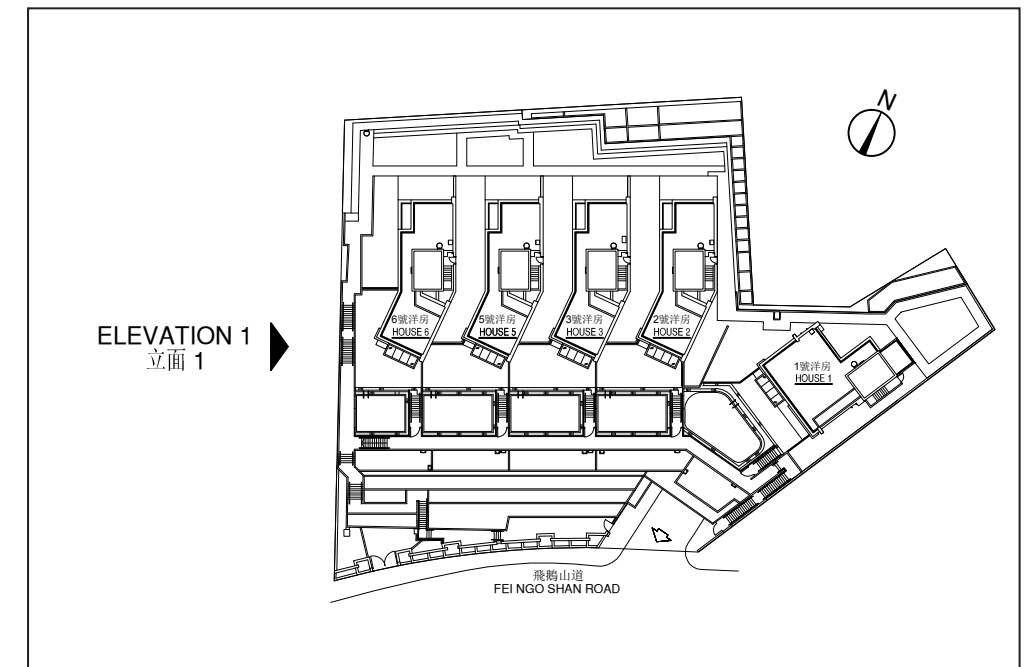
a. Alteration of metal railing design.

1 號洋房及 6 號洋房在發展項目落成後進行獲《建築物條例》小型工程。該等改動的位置如能在現狀立面圖中顯示就於其上標出。該等改動的詳情列出如下（下文編號對應圖中改動編號）：

a. 更改金屬欄杆設計。



LATEST ELEVATION PLAN 1
現狀立面圖 1



Key Plan 示意圖

Authorized person for the Development certified that the elevations shown on this plan:

(a) are prepared on the basis of the approved building plans for the Development as of 13 July 2018; and

(b) are in general accordance with the outward appearance of the Development.

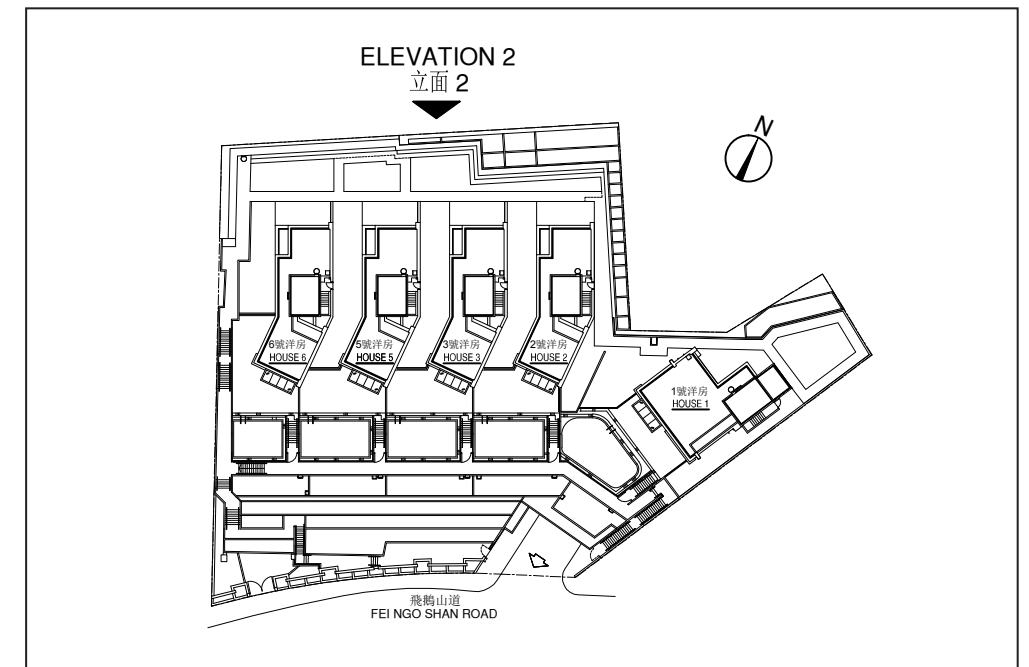
發展項目的認可人士證明本圖所顯示的立面：

(a) 以2018年7月13日的情況為準的本發展項目的經批准的建築圖則為基礎擬備；及

(b) 大致上與本發展項目的外觀一致。

20 | ELEVATION PLAN 立面圖

ELEVATION PLAN 2
立面圖 2



Key Plan 示意圖



ELEVATION PLAN 2
立面圖 2

Authorized person for the Development certified that the elevations shown on this plan:
(a) are prepared on the basis of the approved building plans for the Development as of 13 July 2018; and
(b) are in general accordance with the outward appearance of the Development.

發展項目的認可人士證明本圖所顯示的立面：
(a) 以2018年7月13日的情況為準的本發展項目的經批准的建築圖則為基礎擬備；及
(b) 大致上與本發展項目的外觀一致。

20 | ELEVATION PLAN 立面圖

LATEST ELEVATION PLAN 2

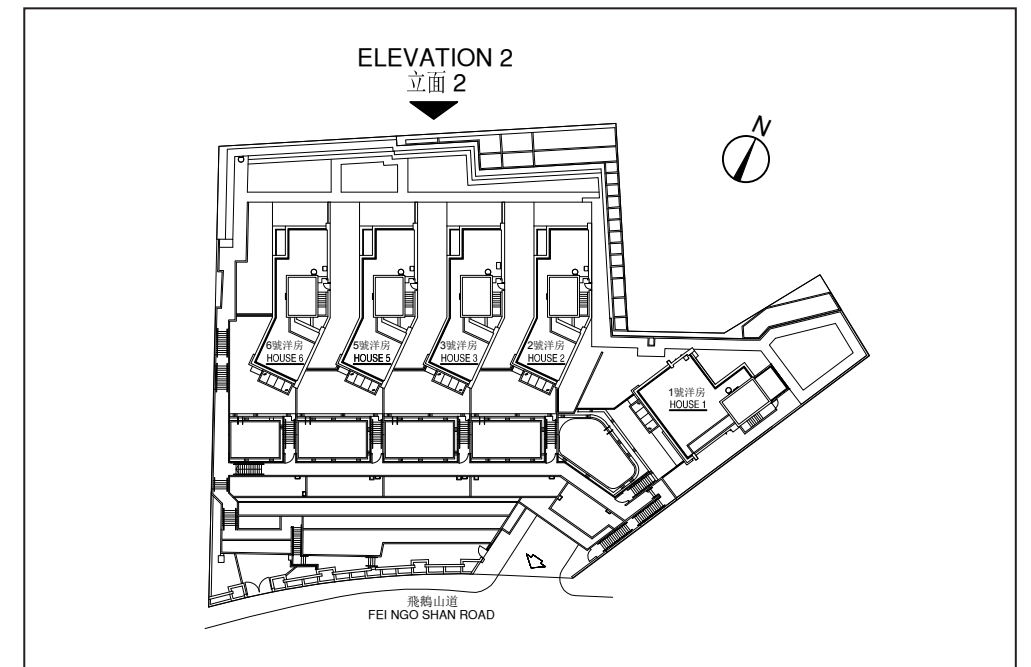
現狀立面圖 2

House 1, 2, 3, 5 and 6 have been altered by way of minor works under the Buildings Ordinance after completion of the Development. The approximate locations of the alterations that can be indicated on the latest elevation plans are indicated thereon and the details of such alterations are set out below (the below numberings refer to the marked alterations on the plan):

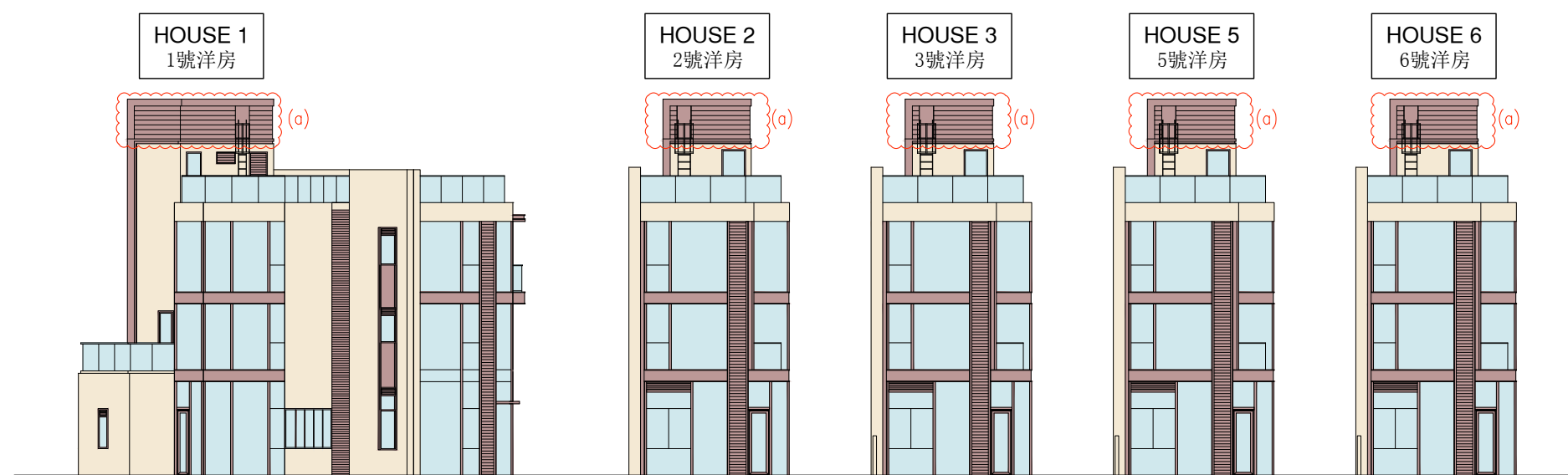
a. Alteration of metal railing design.

1 號、2 號、3 號、5 號及 6 號洋房在發展項目落成後進行獲《建築物條例》小型工程。該等改動的位置如能在現狀立面圖中顯示就於其上標出。該等改動的詳情列出如下（下文編號對應圖中改動編號）：

a. 更改金屬欄杆設計。



Key Plan 示意圖



LATEST ELEVATION PLAN 2
現狀立面圖 2

Authorized person for the Development certified that the elevations shown on this plan:

(a) are prepared on the basis of the approved building plans for the Development as of 13 July 2018; and

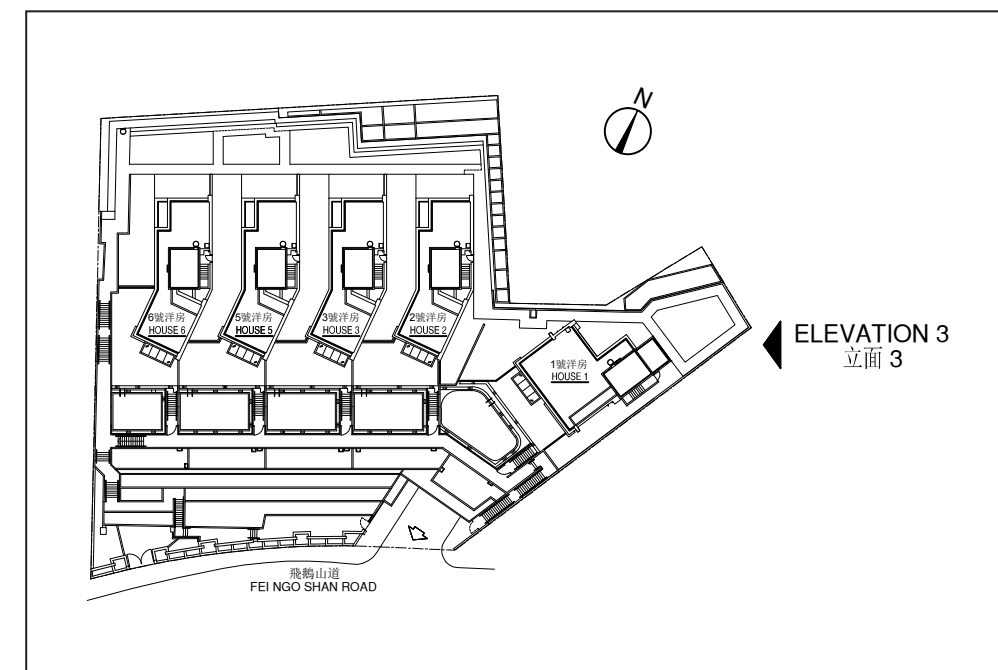
(b) are in general accordance with the outward appearance of the Development.

發展項目的認可人士證明本圖所顯示的立面：

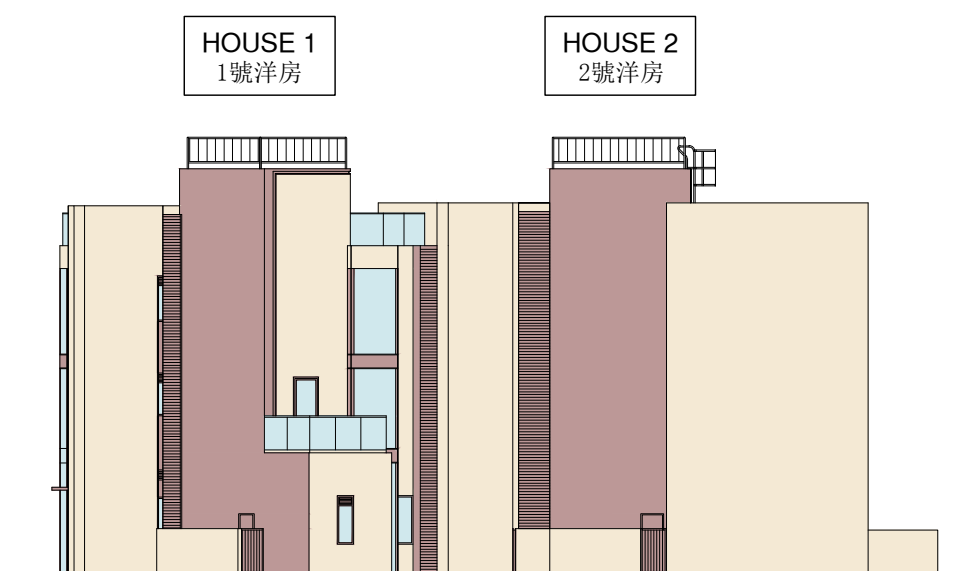
(a) 以2018年7月13日的情況為準的本發展項目的經批准的建築圖則為基礎擬備；及

(b) 大致上與本發展項目的外觀一致。

ELEVATION PLAN 3
立面圖 3



Key Plan 示意圖



ELEVATION PLAN 3
立面圖 3

Authorized person for the Development certified that the elevations shown on this plan:
(a) are prepared on the basis of the approved building plans for the Development as of 13 July 2018; and
(b) are in general accordance with the outward appearance of the Development.

發展項目的認可人士證明本圖所顯示的立面：
(a) 以2018年7月13日的情況為準的本發展項目的經批准的建築圖則為基礎擬備；及
(b) 大致上與本發展項目的外觀一致。

LATEST ELEVATION PLAN 3

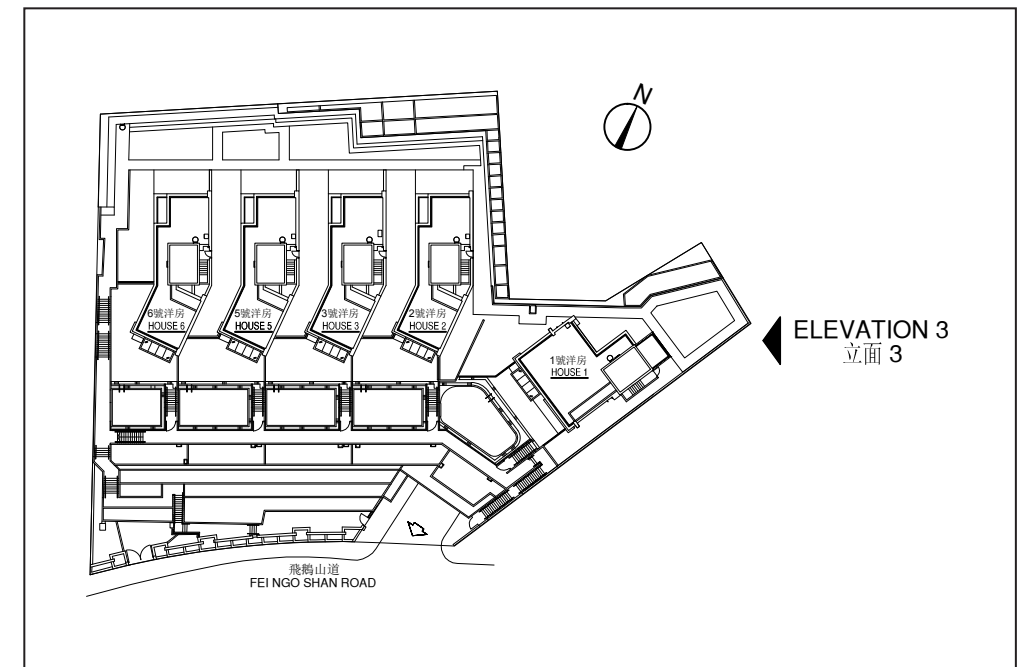
現狀立面圖 3

House 1 and House 2 have been altered by way of minor works under the Buildings Ordinance after completion of the Development. The approximate locations of the alterations that can be indicated on the latest elevation plans are indicated thereon and the details of such alterations are set out below (the below numberings refer to the marked alterations on the plan):

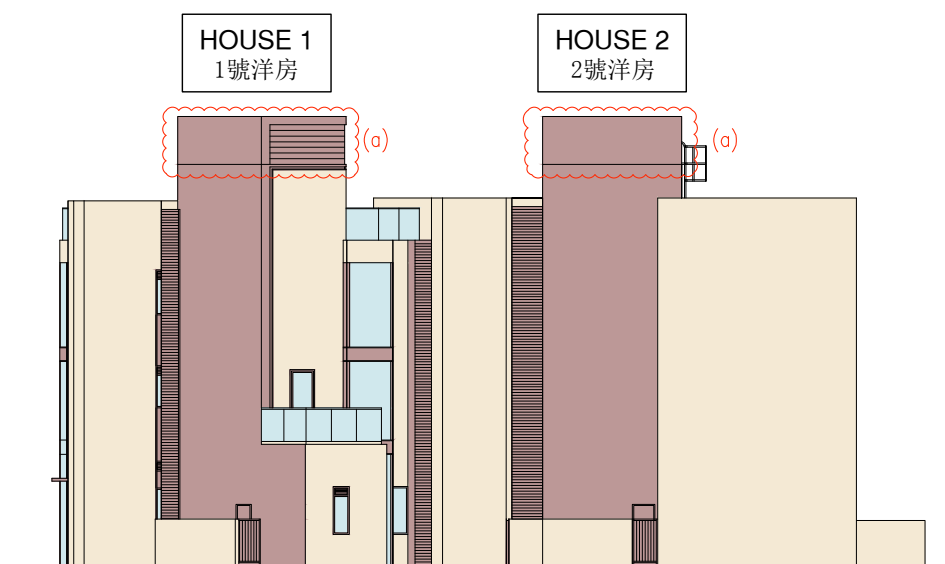
a. Alteration of metal railing design.

1 號洋房及 2 號洋房在發展項目落成後進行獲《建築物條例》小型工程。該等改動的位置如能在現狀立面圖中顯示就於其上標出。該等改動的詳情列出如下（下文編號對應圖中改動編號）：

a. 更改金屬欄杆設計。



Key Plan 示意圖



LATEST ELEVATION PLAN 3
現狀立面圖 3

Authorized person for the Development certified that the elevations shown on this plan:

(a) are prepared on the basis of the approved building plans for the Development as of 13 July 2018; and

(b) are in general accordance with the outward appearance of the Development.

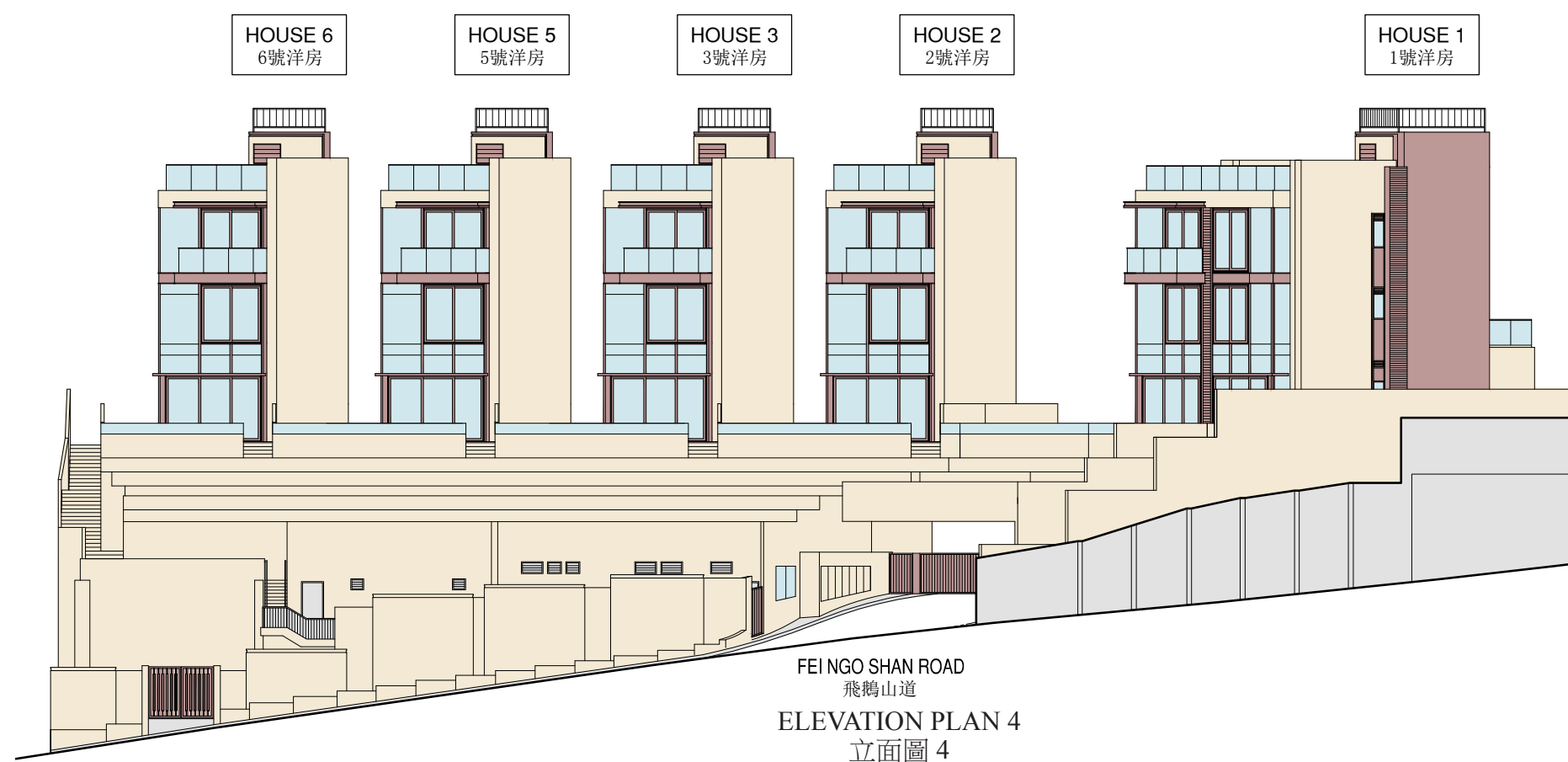
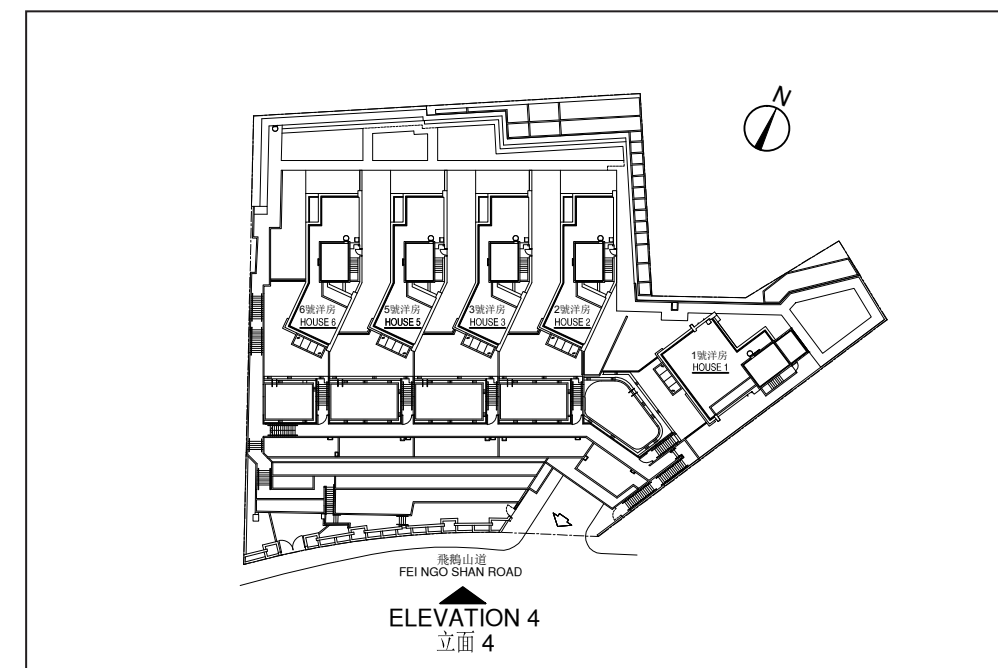
發展項目的認可人士證明本圖所顯示的立面：

(a) 以2018年7月13日的情況為準的本發展項目的經批准的建築圖則為基礎擬備；及

(b) 大致上與本發展項目的外觀一致。

20 | ELEVATION PLAN 立面圖

ELEVATION PLAN 4
立面圖 4



Authorized person for the Development certified that the elevations shown on this plan:
(a) are prepared on the basis of the approved building plans for the Development as of 13 July 2018; and
(b) are in general accordance with the outward appearance of the Development.

發展項目的認可人士證明本圖所顯示的立面：
(a) 以2018年7月13日的情況為準的本發展項目的經批准的建築圖則為基礎擬備；及
(b) 大致上與本發展項目的外觀一致。

LATEST ELEVATION PLAN 4

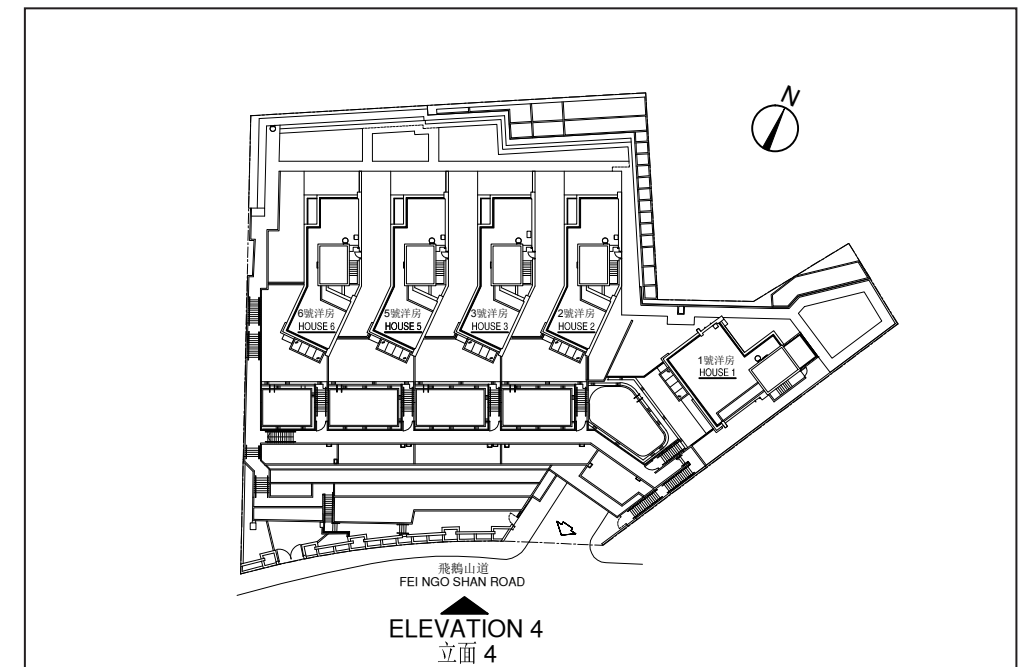
現狀立面圖 4

House 1, 2, 3, 5 and 6 and the podium part have been altered by way of minor works under the Buildings Ordinance after completion of the Development. The approximate locations of the alterations that can be indicated on the latest elevation plans are indicated thereon and the details of such alterations are set out below (the below numberings refer to the marked alterations on the plan):

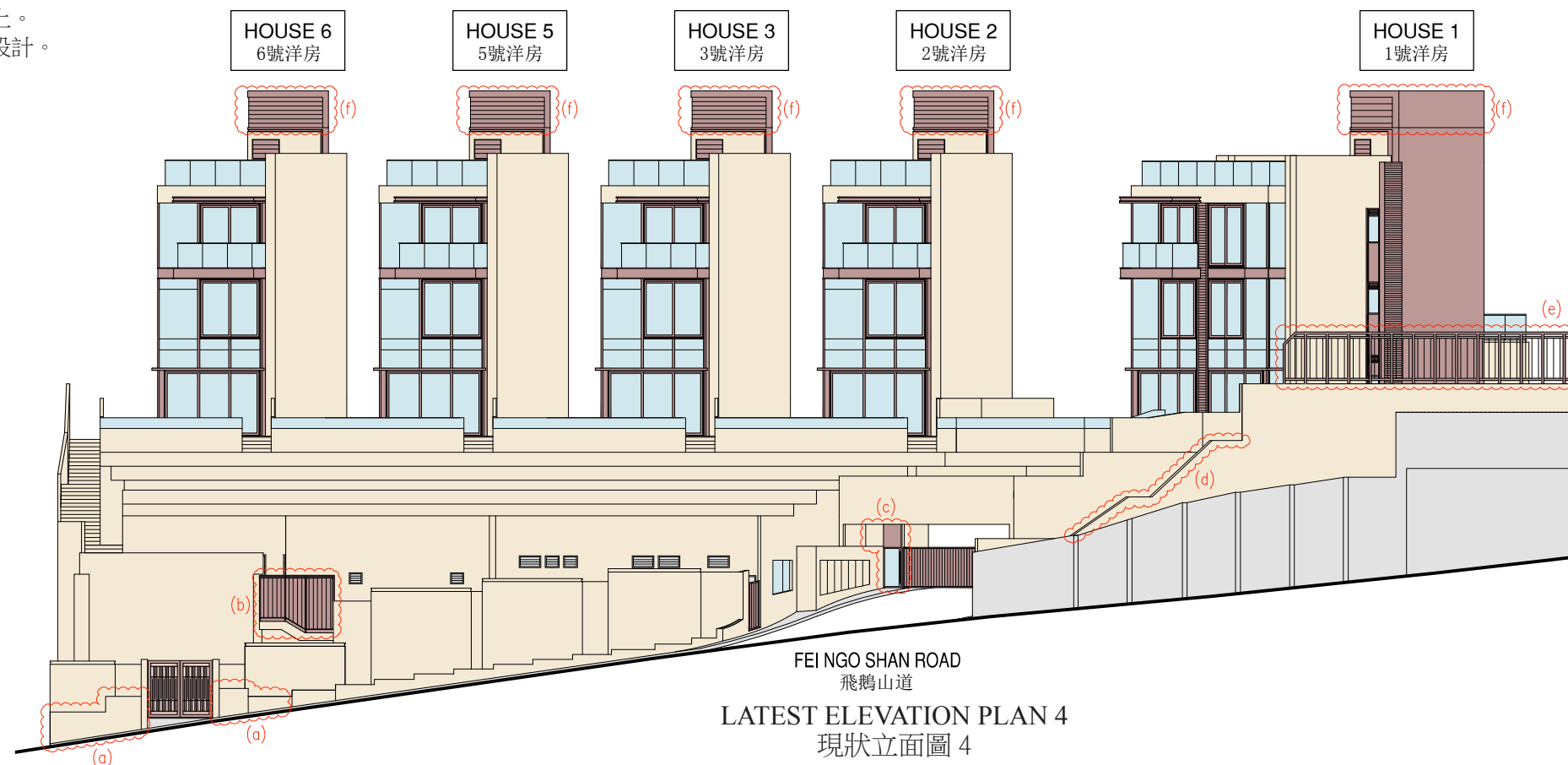
- Alteration of the height of planter wall.
- Removal of handrail and erection of new metal fence.
- Erection of new glass door and new non-structural partition wall.
- Alteration of fence wall design.
- Addition of new metal signboard with maintenance access on top of existing fence wall.
- Alteration of metal railing design.

1 號、2 號、3 號、5 號及 6 號洋房及平台部份在發展項目落成後進行獲《建築物條例》小型工程。該等改動的位置如能在現狀立面圖中顯示就於其上標出。該等改動的詳情列出如下（下文編號對應圖中改動編號）：

- 更改花槽高度。
- 移除扶手及豎立新金屬圍欄。
- 豎立新玻璃門及非結構分隔牆。
- 更改圍牆設計。
- 加建新金屬告示面板及維修出入口於現有圍牆上。
- 更改金屬欄杆設計。



Key Plan 示意圖



Authorized person for the Development certified that the elevations shown on this plan:

- are prepared on the basis of the approved building plans for the Development as of 13 July 2018; and
- are in general accordance with the outward appearance of the Development.

發展項目的認可人士證明本圖所顯示的立面：

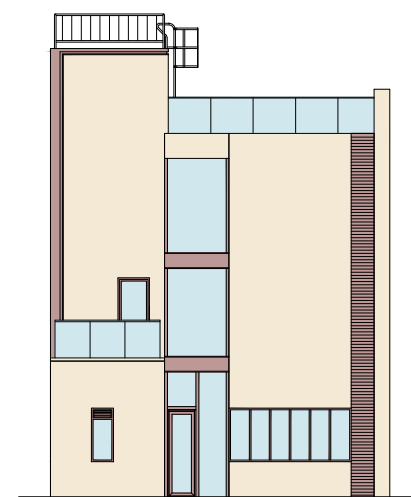
- 以2018年7月13日的情況為準的本發展項目的經批准的建築圖則為基礎擬備；及
- 大致上與本發展項目的外觀一致。

20 | ELEVATION PLAN 立面圖

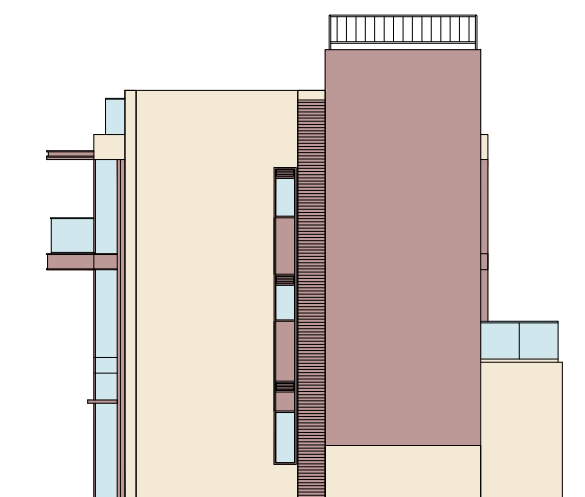
ELEVATION PLAN 5, 6, 7 & 8 (For House 1) 立面圖 5、6、7 及 8（適用於 1 號洋房）



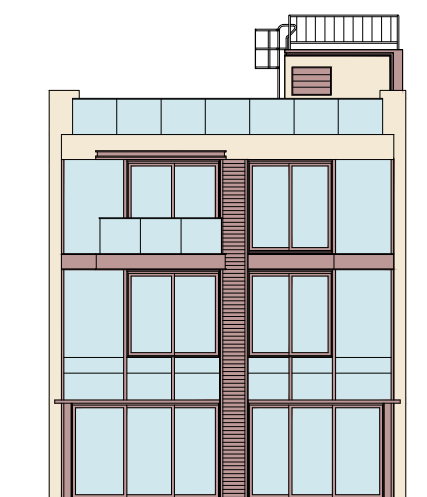
ELEVATION PLAN 5
立面圖 5



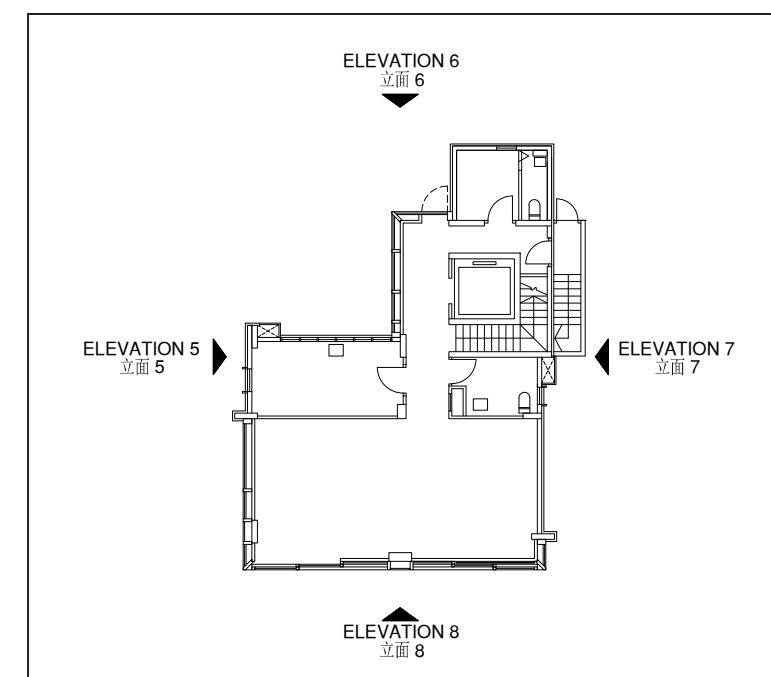
ELEVATION PLAN 6
立面圖 6



ELEVATION PLAN 7
立面圖 7



ELEVATION PLAN 8
立面圖 8



Key Plan 示意圖

Authorized person for the Development certified that the elevations shown on this plan:
(a) are prepared on the basis of the approved building plans for the Development as of 13 July 2018; and
(b) are in general accordance with the outward appearance of the Development.

發展項目的認可人士證明本圖所顯示的立面：
(a) 以2018年7月13日的情況為準的本發展項目的經批准的建築圖則為基礎擬備；及
(b) 大致上與本發展項目的外觀一致。

20 | ELEVATION PLAN 立面圖

LATEST ELEVATION PLAN 5, 6, 7 & 8 (For House 1)

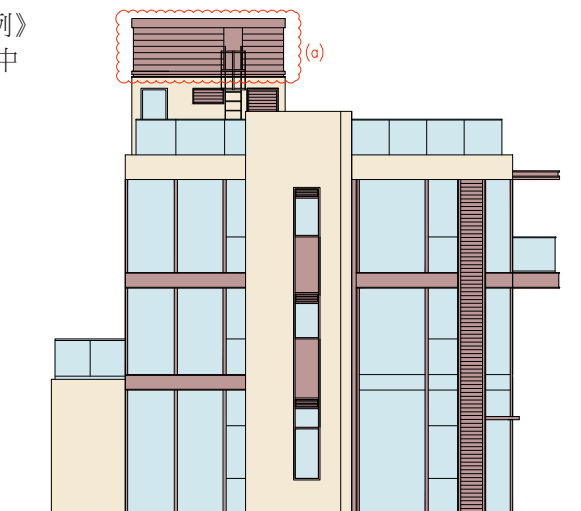
現狀立面圖 5、6、7 及 8（適用於 1 號洋房）

House 1 has been altered by way of minor works under the Buildings Ordinance after completion of the Development. The approximate locations of the alterations that can be indicated on the latest elevation plans are indicated thereon and the details of such alterations are set out below (the below numberings refer to the marked alterations on the plan):

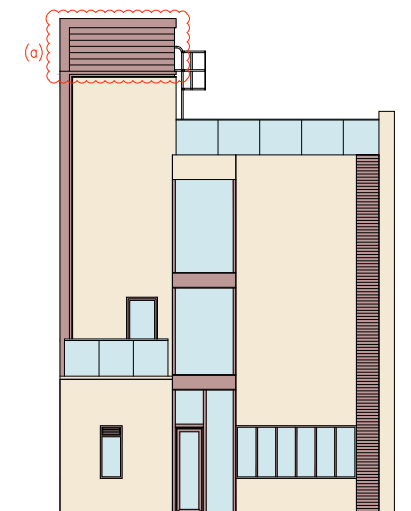
a. Alteration of metal railing design.

1 號洋房在發展項目落成後進行獲《建築物條例》小型工程。該等改動的位置如能在現狀立面圖中顯示就於其上標出。該等改動的詳情列出如下（下文編號對應圖中改動編號）：

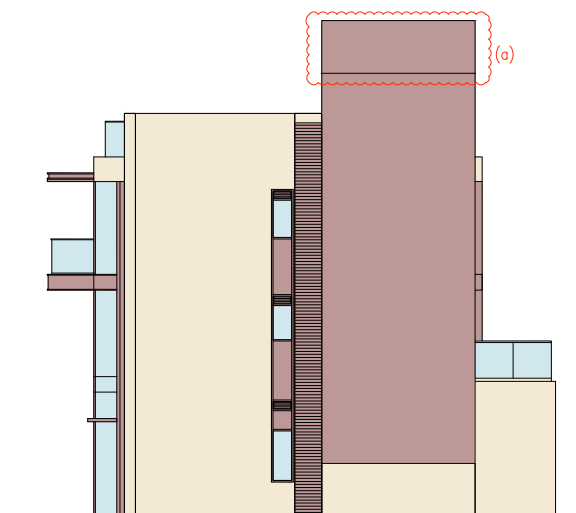
a. 更改金屬欄杆設計。



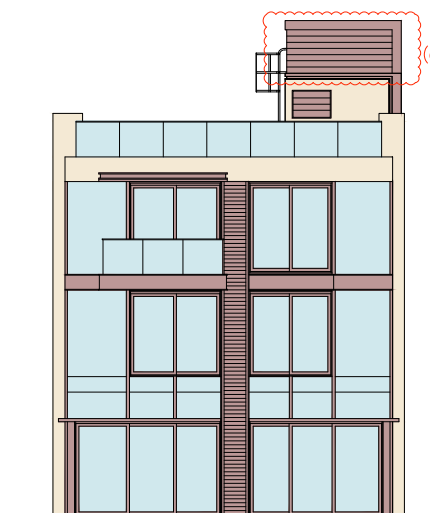
LATEST ELEVATION PLAN 5
現狀立面圖 5



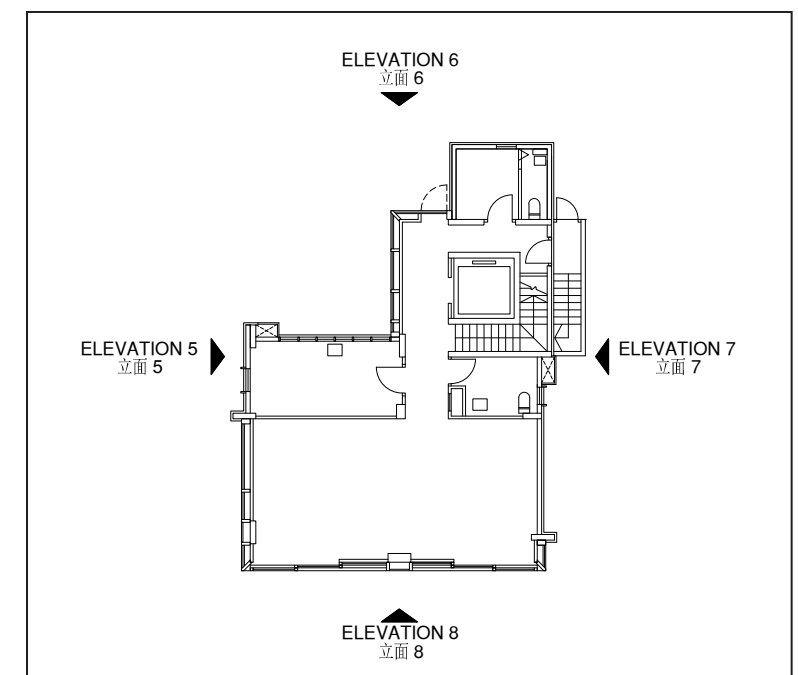
LATEST ELEVATION PLAN 6
現狀立面圖 6



LATEST ELEVATION PLAN 7
現狀立面圖 7



LATEST ELEVATION PLAN 8
現狀立面圖 8



Key Plan 示意圖

Authorized person for the Development certified that the elevations shown on this plan:

(a) are prepared on the basis of the approved building plans for the Development as of 13 July 2018; and

(b) are in general accordance with the outward appearance of the Development.

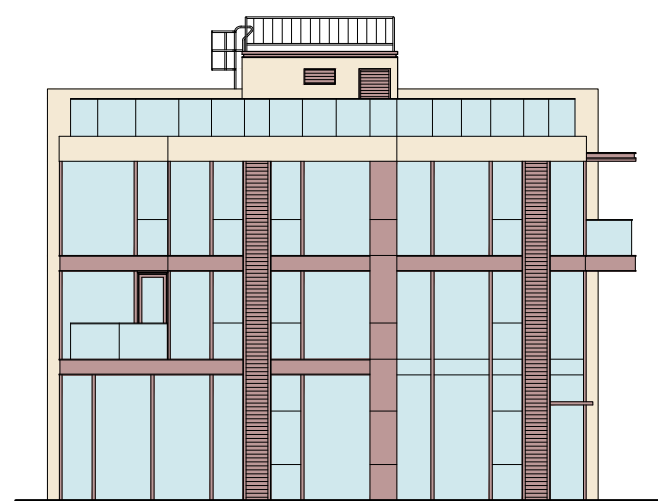
發展項目的認可人士證明本圖所顯示的立面：

(a) 以2018年7月13日的情況為準的本發展項目的經批准的建築圖則為基礎擬備；及

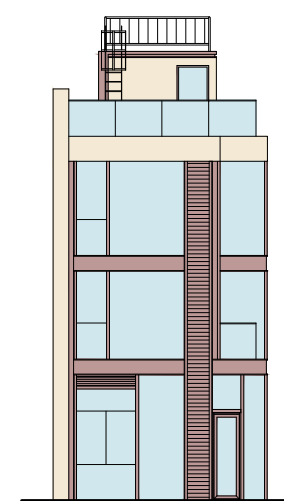
(b) 大致上與本發展項目的外觀一致。

20 | ELEVATION PLAN 立面圖

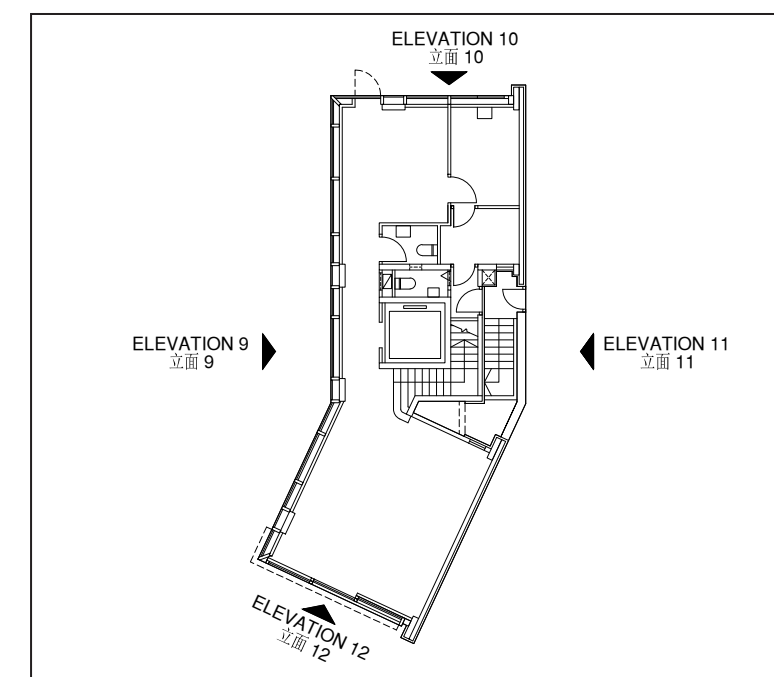
ELEVATION PLAN 9, 10, 11 & 12 (For House 2, 3, 5 & 6)
立面圖 9、10、11 及 12（適用於 2、3、5 及 6 號洋房）



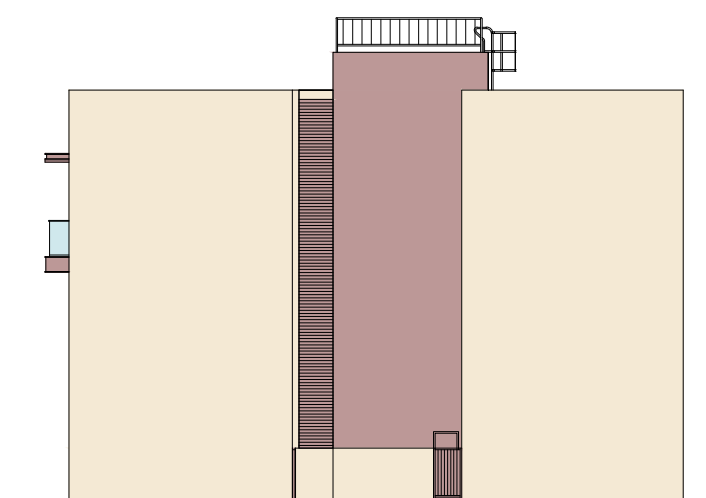
ELEVATION PLAN 9
立面圖 9



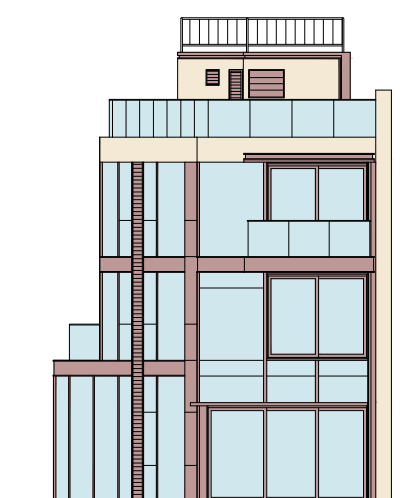
ELEVATION PLAN 10
立面圖 10



Key Plan 示意图



ELEVATION PLAN 11
立面圖 11



ELEVATION PLAN 12
立面圖 12

Authorized person for the Development certified that the elevations shown on this plan:

- (a) are prepared on the basis of the approved building plans for the Development as of 13 July 2018; and
- (b) are in general accordance with the outward appearance of the Development.

發展項目的認可人士證明本圖所顯示的立面：

- (a) 以2018年7月13日的情況為準的本發展項目的經批准的建築圖則為基礎擬備；及
- (b) 大致上與本發展項目的外觀一致。

20 | ELEVATION PLAN 立面圖

LATEST ELEVATION PLAN 9, 10, 11 & 12 (For House 2, 3, 5 & 6)

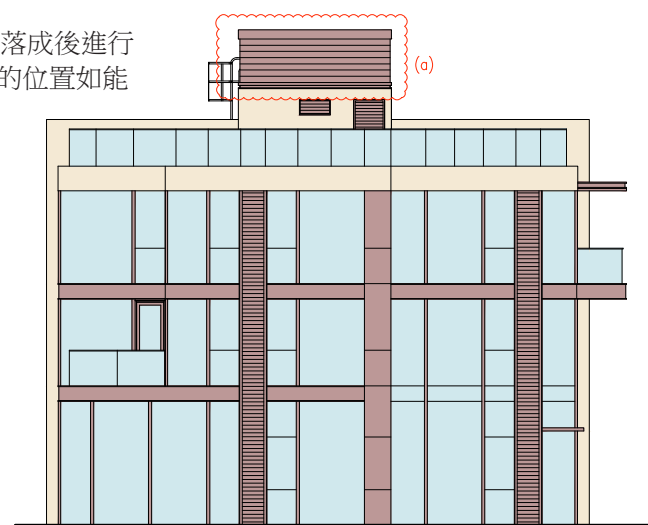
現狀立面圖 9、10、11 及 12（適用於 2、3、5 及 6 號洋房）

House 2, 3, 5 and 6 have been altered by way of minor works under the Buildings Ordinance after completion of the Development. The approximate locations of the alterations that can be indicated on the latest elevation plans are indicated thereon and the details of such alterations are set out below (the below numberings refer to the marked alterations on the plan):

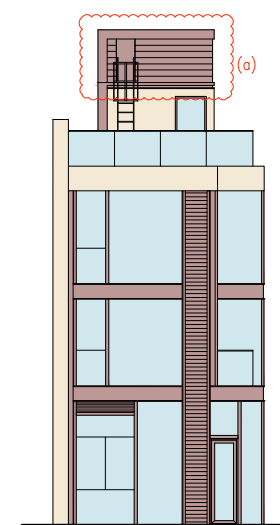
a. Alteration of metal railing design.

2 號、3 號、5 號及 6 號洋房在發展項目落成後進行獲《建築物條例》小型工程。該等改動的位置如能在現狀立面圖中顯示就於其上標出。該等改動的詳情列出如下（下文編號對應圖中改動編號）：

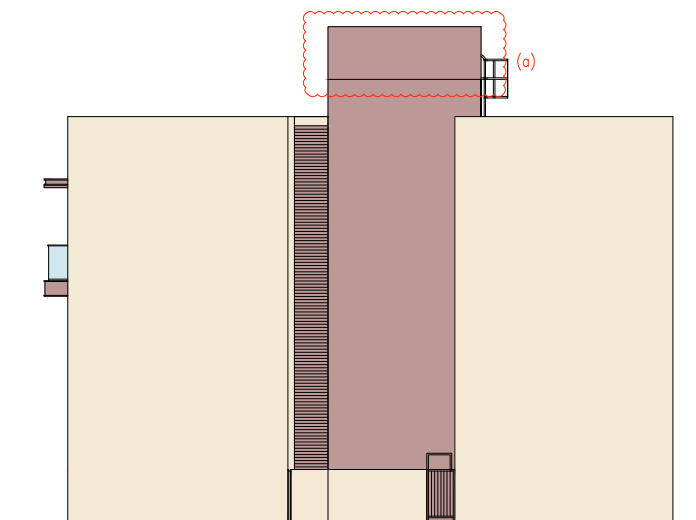
a. 更改金屬欄杆設計。



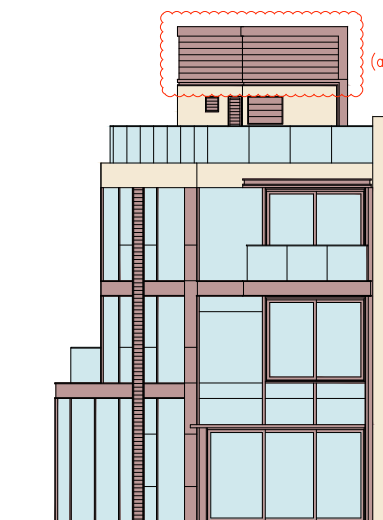
LATEST ELEVATION PLAN 9
現狀立面圖 9



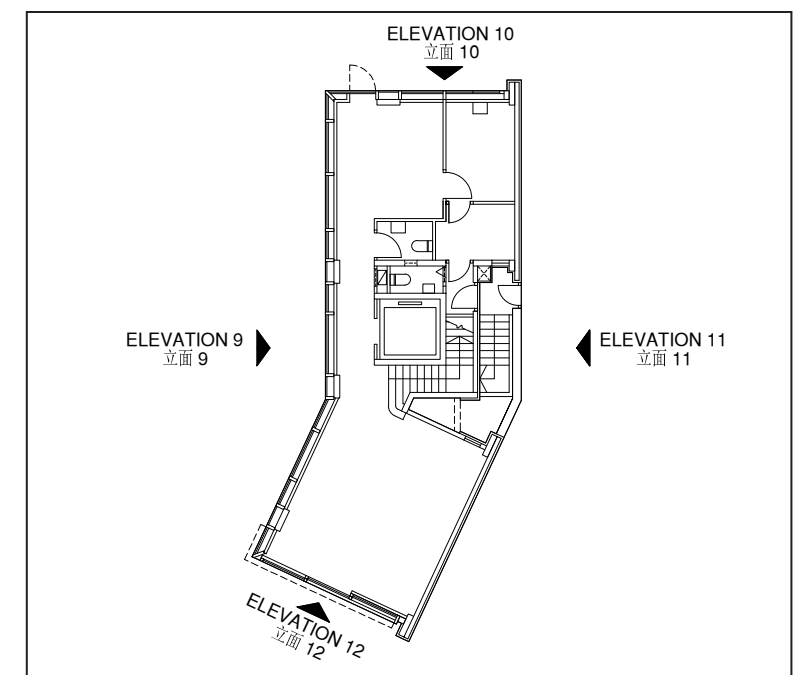
LATEST ELEVATION PLAN 10
現狀立面圖 10



LATEST ELEVATION PLAN 11
現狀立面圖 11



LATEST ELEVATION PLAN 12
現狀立面圖 12



Key Plan 示意圖

Authorized person for the Development certified that the elevations shown on this plan:

(a) are prepared on the basis of the approved building plans for the Development as of 13 July 2018; and

(b) are in general accordance with the outward appearance of the Development.

發展項目的認可人士證明本圖所顯示的立面：

(a) 以2018年7月13日的情況為準的本發展項目的經批准的建築圖則為基礎擬備；及

(b) 大致上與本發展項目的外觀一致。